

E-mail: superior@supsew.com



ALL PRICES SHOWN ARE SUBJECT
 TO CHANGE WITHOUT NOTICE

PRODUCT

SUPERIOR BULLETIN

IN NEW YORK CITY:
 48 West 25th Street, New York, NY 10010-2758

IN MIAMI: 3900 Northwest 79th Avenue
 Suite 214, Miami, Florida 33166-5997

| DEPARTMENT | TOLL FREE | TELEPHONE | DEPARTMENT | TOLL FREE | TELEPHONE |
|------------------|----------------|----------------|--|----------------|----------------|
| Order Department | (800) 274-5800 | (212) 691-5900 | Main Numbers | (800) 678-1777 | (305) 477-5585 |
| Main Numbers | (800) 274-5808 | (212) 691-3400 | Faxes | (800) 678-0727 | (305) 477-1116 |
| Faxes | (800) 274-1500 | (212) 807-8743 | Web Site: www.superiorsew.com | | |

We are **MASTER DISTRIBUTORS** of Replacement Parts for:
 ✓ **BROTHER** ✓ **KANSAI** ✓ **MITSUBISHI**
 Please call us for **ALL** of your spare part needs for these machines.

We are an **EXCLUSIVE DISTRIBUTOR** of:
 ✓ **RACING PULLERS, METERING
 DEVICES, TAPE FEEDERS, ETC.**
 Please call us for **ALL** of your RACING product needs.

PARTS FOR CONSEW

FOR Class: 347R



HOOK
 #536

FOR Class: 146RB



LEFT HELICAL GEAR
 #C146RB268

FOR Class: 206RB



**BOBBIN CASE
 OPENER**
 #13711

FOR Class: 206RB



**BOBBIN CASE
 LIFTER ECCENTRIC**
 #13714

FOR Class: 206RB



**FEED DRIVE
 FLANGE COMPLETE**
 #15710C

FOR Class: 206RB



TAKE-UP LEVER
 #18003

PARTS FOR CONSEW

FOR Class: 206RB



**THREAD
 RELEASING SHAFT**
 #18041

FOR Class: 206RB



BUSHING
 #18042

FOR Class: 206RB



SHAFT FORK
 #18043

FOR Class: 206RB



**FEED LIFT
 SLIDE BLOCK
 (WITH 18076 PIN)**
 #18075C

FOR Class: 206RB



**KNEE LIFTER
 CRANK COMPLETE**
 #18862

FOR Class: 206RB



**VIBRATING
 PRESSER FOOT**
 #30032
 USE WITH OUTSIDE FOOT
 #10796

PARTS FOR JUKI

FOR Class: AMS SERIES



BOBBIN
#B-1805-210-A00

FOR Class: DDL-5530



NEEDLE BAR
#110-35003

FOR Class: DLN-5410



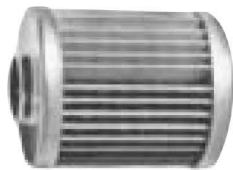
THREAD GUIDE FOR KNIFE
#113-13103

FOR Classes: MB-372, 373



TENSION ASSEMBLY #2
#B-2019-372-0A0

FOR Classes:
M0-2000, 3000 SERIES



CARTRIDGE FILTER
#118-43208

**IF YOU DON'T SEE
A PART YOU NEED –
CALL US.
WE ARE
CONSTANTLY
ADDING NEW ITEMS
TO OUR LINE!**

PARTS FOR PEGASUS

FOR Class: E SERIES



WASHER "SHORT"
#137906
(323-615-018)

FOR Class: E SERIES



NEEDLE CLAMP
#201031A

FOR Class: E SERIES



HINGE PIN
#202647A

FOR Class: E SERIES



PRESSER FOOT BODY
#205253

PARTS FOR PEGASUS

FOR Class: E SERIES



**NEEDLE
THREAD GUIDE**
#210313
(323-851-041)

FOR Class: E SERIES



HINGE PIN
#210323

FOR Class: E SERIES



EYELET
#210353

FOR Class: E SERIES



FINGER
#210371

PARTS FOR REECE

FOR Class: S2



STUD
#01-1065

FOR Class: S2



BUSHING
#01-7017

FOR Class: 101



LOOP PULLER
#10-4206-0-000

FOR Class: 101



CENTER KNIFE
#46-1125-5-000

PARTS FOR UNION SPECIAL

FOR Class: 36200



UPPER KNIFE
#36270B

ALSO AVAILABLE
STATIONARY KNIFE
#36250

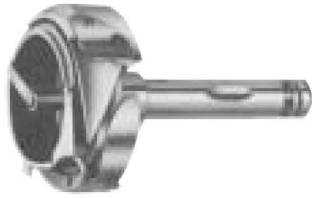
FOR Class: 53100



IDLE GEAR
#53139D

PARTS FOR SINGER

FOR Class: 212A-939JA-JB



HOOK
#281049

FOR Class: 71-101



BOBBIN CASE
#249599E-Z

FOR Class: 121D



NEEDLE BEARING
#270653

FOR Classes: 261-11, 12, 13



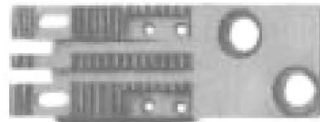
HINGE PLATE
#139519

FOR Class: 300U



SCREW STUD
#350466

FOR Class: 300W



FEED DOG 1 3/8
#267936-124

PARTS FOR TAJIMA

FOR Classes: TME-DC,
TMEF, TMEX-C901



SMALL HOOK
#ME0505020AMQE-Z

FOR Classes: TME, TMEG,
TMEF



**BOBBIN CASE
WITH PIG TAIL (NBL)**
#MEC503000DBME-Z
(MEC503000DBMNBLE-Z)

FOR Classes: TME, TMEF



**NEEDLE HOLE
COLLAR SEALS**
#EF0202300000
(20 PER PACK)

FOR Class: TMEF



ROTARY TENSION DISC
#EF-9005-5
(TMBE-69-025)
(EF0905010000)

PARTS FOR TAJIMA

FOR Class: TME-C600



LID FRAME A
#HF0305100000

FOR Class: TME-C600



LID FRAME B
#HF0306000000

FOR Class: TMEG



BEARING CASE
#EF0502000000

FOR Class: TMEG



**TAKE-UP
LEVER GEAR**
#EF0517000000

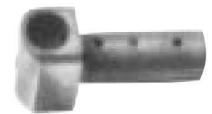
PARTS FOR TAIKO

FOR Class: TK1842-03



HOOK
#07-001A-7607

FOR Class: TK1842-03



**THREAD TAKE-UP
LEVER SLIDE BLOCK**
#02-003A-740L

FOR Class: TK1842-03



**NEEDLE BAR
CRANK**
#02-004P-7400

FOR Class: TK1842-03



**NEEDLE BAR
CLAMP**
#04-006A-5607

FOR Class: TK1842-03



**NEEDLE BAR
CRANK ROD**
#04-008A-5607

**WATCH FOR OUR
FUTURE BULLETINS
FOR NEW ITEMS
ADDED TO OUR
EVER INCREASING
PRODUCT LINE!**

IRONS



ELECTRIC STEAM IRON
#AH-2000



ALL STEAM SEAM OPENING IRON
#AHP-2P

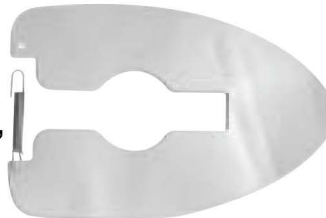


COLLAR POST WITH ARM
#CP-3



ADJUSTABLE IRON STAND
#IS-3

DYNO SAFETY SHIELDS



FOR: CISSEL (N/S),
SUSSMAN EMSC, ELECT "S"
#SS-115

FOR: CISSEL (O/S),
SAPPORO SA-3E, PACIFIC SA-S
#SS-1113

FOR: CISSEL 1000, 2000 #SS-XD212

FOR: SUSSMAN AQUA II #SS-AQUA2

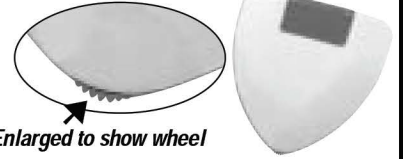
FOR: SUSSMAN #80 #SS-AQUA80

TAILORS' CHALK

TAILORS' CHALK WHEEL

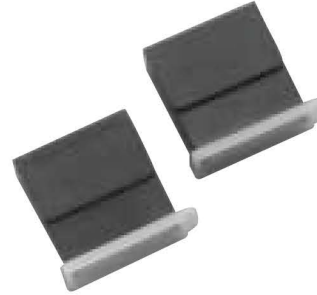
5 ASSORTED COLORS PER BOX

- Ideal for making fine lines
- No mess or breakage
- Easy to remove
- Available in four colors



Enlarged to show wheel

2 WHITE, 1 RED, 1 BLUE, 1 YELLOW
#CW401



TAILORS' CHALK WHEEL REFILLS

SOLD 2 PER PACK

#CR402WH WHITE
#CR402BL BLUE
#CR402RD RED
#CR402YL YELLOW

JEMS TAILORS' CHALK

BOX OF 36 PIECES



#500WH WHITE
#500RD RED
#500BL BLUE
#500YE YELLOW

PERFECTION MASTER QUICK DISAPPEARING CHALK

BOX OF 36 PIECES #D999W

HIDDEN GLOW DISAPPEARING CHALK
BOX OF #HG1000 GREEN
36 PIECES #HG1001 YELLOW

HIDDEN GLOW CRAYONS
BOX OF #HG950 GREEN
48 PIECES #HG951 YELLOW

CORDLESS TRIMMER

MULTI PURPOSE ERGONOMIC CUTTER



E.C. CUTTER

Includes: Two Cutter Blades,
Rechargeable Battery,
Battery Charger, AC Battery
and Adapter (Transformer)
#EC-1

ALSO AVAILABLE SEPARATELY

#EC-1BL STANDARD CUTTER BLADE
#EC-1BT RECHARGEABLE BATTERY
#EC-1CH BATTERY CHARGER
#EC-1AC AC BATTERY
#EC-1TR ADAPTER (TRANSFORMER)