

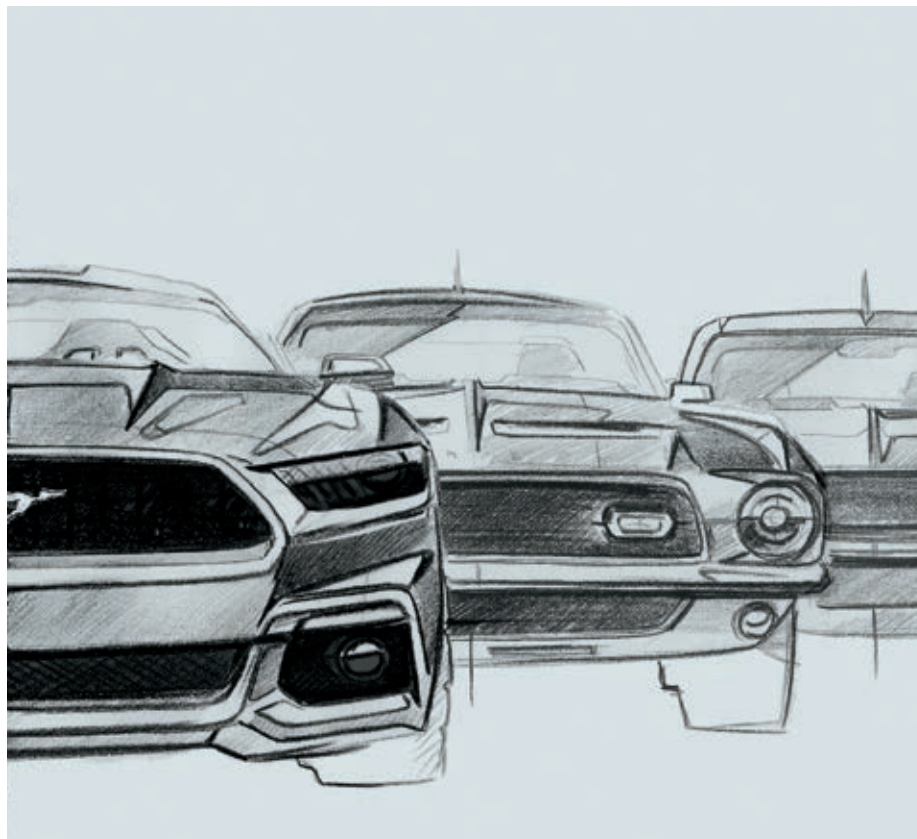
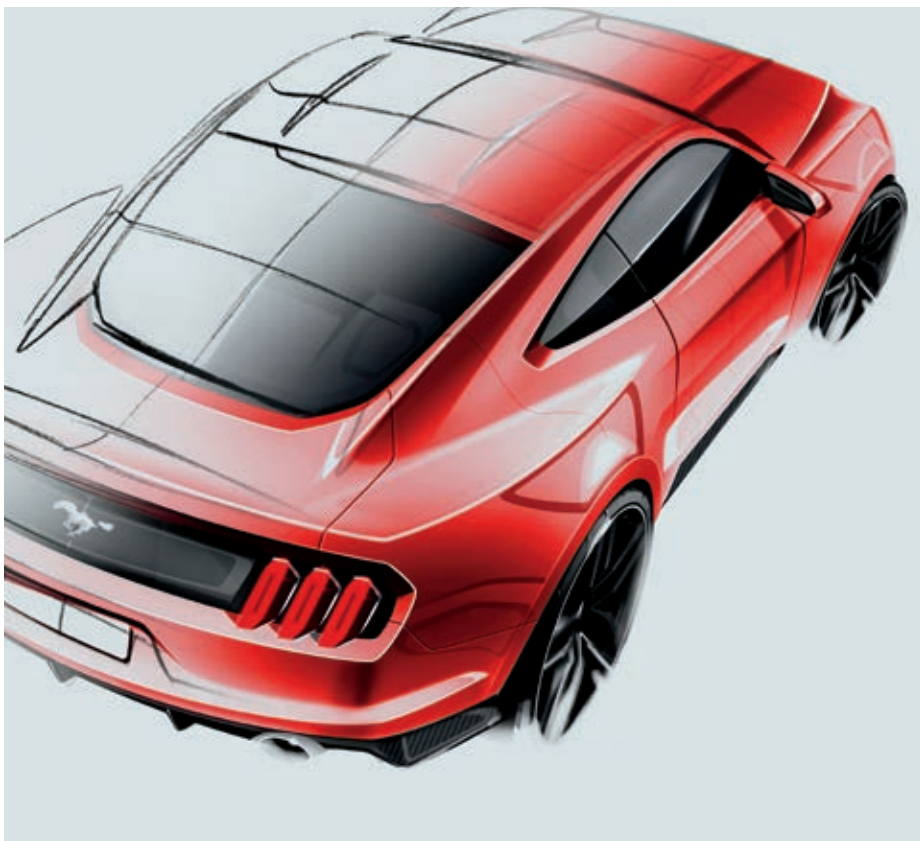
2015  
**MUSTANG**



Courtesy of Ford Motor Company



Go Further



## EVOLUTION OF AN ICON.

Forward-leaning. Hard-charging. Free-breathing. And incredibly streamlined. A bold new interpretation of America's legendary pony car. The all-new 2015 Ford Mustang hits the pavement running – sleeker and more agile than ever.

**Designers were challenged** to create the most aerodynamic Mustang yet, while giving it an even more aggressive stance. Painstakingly sketched and sculpted, its form was relentlessly refined.

**Engineers thoroughly tested** the car's performance using advanced technology in the lab and on the track, then provided the designers with feedback.

**Performance is enhanced** by subtle elements like the wheel aero curtains – vertical slots at the outer edges of the front fascia. They create a high-pressure region that holds airflow closer to the body and minimizes drag.

**Fastback or convertible**, the all-new Mustang is our most advanced yet. The stunning result of form and function flowing seamlessly together. A world-class design. Ready to be unleashed on the world.

The images and features on this page may differ from dealer's order.





## POWER PLAYERS.

Every member of the 2015 Mustang family makes a powerful impression. There's the deep, resonating rumble of the GT with its legendary 5.0L V8. The turbocharged responsiveness of the all-new 2.3L EcoBoost® I-4. And the tried-and-true 3.7L V6. Whether you go for a short-throw manual or a SelectShift® automatic,<sup>1</sup> it's time to put your dream Mustang in gear.

**The fastest GT ever** packs a more potent V8 under its hood thanks to inspiration from the previous generation's Boss® 302 engine.

**Horsepower, torque and fuel efficiency** can all be yours with the 2.3L EcoBoost. Its twin-scroll turbocharger and direct-injection technology deliver all around.

### Mustang GT

5.0L V8: New cylinder heads with revised high-flow ports help air flow more freely for better high-rpm breathing than last year

6-speed manual or SelectShift automatic<sup>1</sup> transmission

8.2 km/L<sup>2,3</sup>  
421 net hp<sup>3</sup> and 391 lb.-ft. of net torque<sup>3</sup>

### Mustang EcoBoost

2.3L EcoBoost I-4: Twin-scroll turbocharger optimized for quick acceleration response

6-speed manual or SelectShift automatic<sup>1</sup> transmission

12.0 km/L<sup>2,3</sup>  
325 net hp<sup>3</sup> and 323 lb.-ft. of net torque<sup>3</sup>

### Mustang V6

3.7L V6: All-aluminum DOHC with Ti-VCT helps deliver low-end torque, peak power and increased efficiency

6-speed manual or SelectShift automatic<sup>1</sup> transmission

10.4 km/L<sup>2,3</sup>  
304 net hp<sup>3</sup> and 280 lb.-ft. of net torque<sup>3</sup>

<sup>1</sup>Available feature. <sup>2</sup>Manual transmission. <sup>3</sup>Data as per GCC Standardization Organization certification.

The images and features on this page may differ from dealer's order.





## DROP IN. REV UP.

Lower yourself into the sporty new driver's seat. Put your foot down. And let the adrenaline flow. Nothing compares to this rush. It's pure magic. One drive. And you're convinced. You must have this car. The all-new Mustang.

**The carefully crafted new interior** welcomes all drivers. The steering column tilts and telescopes. Your footrest and accelerator angles match. The shifter's right where it should be for open access to controls (and cupholders). Plus, the front seats travel farther than in the previous model. And there's more knee room. All that's missing is you.

*GT Premium. Convertible. Magnetic. Dark Saddle leather trim.*

The images and features on this page may differ from dealer's order.





## TALKS THE TALK.

And walks the walk. Mustang backs its hot new look with cool technology. Voice-activated Ford SYNC®<sup>1</sup> comes standard. So you can enjoy hands-free calls, music and more using simple voice commands.

**Once paired, it can download contacts** and play music from your smartphone. It can also access your MP3 player, USB or iPod.<sup>®</sup>

**Just touch a button on the steering wheel** and say things like "Call: Ahmed at home" or "Play playlist: Rock."

**Mustang makes it easy for you** to stay connected and entertained. SYNC. Say the word.

| SYNC

*GT. Fastback. Ebony cloth trim.*

<sup>1</sup>Driving while distracted can result in loss of vehicle control. Only use mobile phones and other devices, even with voice commands, when it is safe to do so. Not all features are compatible with all phones. iPod is a trademark of Apple Inc., registered in the U.S. and other countries.

The images and features on this page may differ from dealer's order.



## SENSES DANGER. LIKE A SUPERHERO.

High-speed passing. Crowded lots. Tight driveways. Long runs down the highway. The all-new Mustang offers advanced driver-assist technologies<sup>1</sup> with sophisticated sensors that can help you out in all these challenging real-world moments and more.

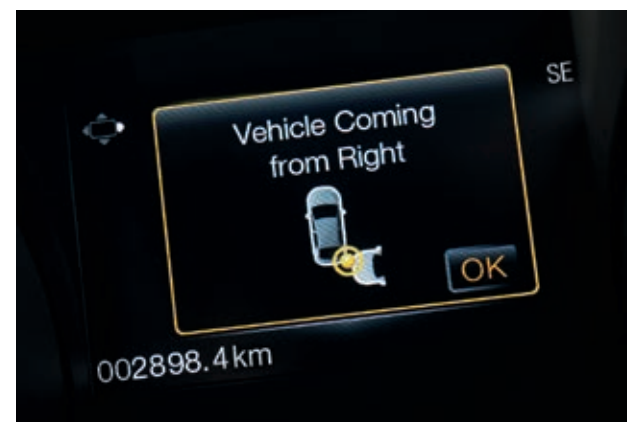
**Stay alert to traffic detected in blind spots** as you drive forward, or traffic nearing either side of the vehicle as you slowly back up, thanks to BLIS<sup>®</sup> (Blind Spot Information System) with cross-traffic alert!<sup>1</sup> BLIS helps warn you using lights embedded in the sideview mirrors.<sup>2</sup> Cross-traffic alert uses the same lights, plus a warning sound and a message center notice.

**Get a heads-up** from adaptive cruise control and collision warning with brake support!<sup>1</sup> This system helps maintain your choice of 4 preset gaps from the vehicle in front of you and can alert you to a potential collision. If one is detected, it flashes a warning on the windshield, sounds an alarm, and helps by pre-charging the brake system.

*GT Premium. Fastback. Ruby Red Tinted Clearcoat Metallic. Available equipment.*

<sup>1</sup>Available feature. Driver-assist features are supplemental and do not replace the driver's judgment. <sup>2</sup>BLIS replaces standard integrated blind spot mirrors.

The images and features on this page may differ from dealer's order.







## AND TRANSFORMS FASTER THAN EVER.

The all-new Mustang convertible drops its top nearly twice as fast as the previous generation. Engineered as a convertible from the start, it was designed to deliver a smoother ride and better handling than before. And even offers you a lower liftover height, plus more trunk space.

**Lower the top in seconds** by simply releasing the new centrally located top latch and pressing a button. With the new electric drive system, you'll enjoy quieter top operation this year too.

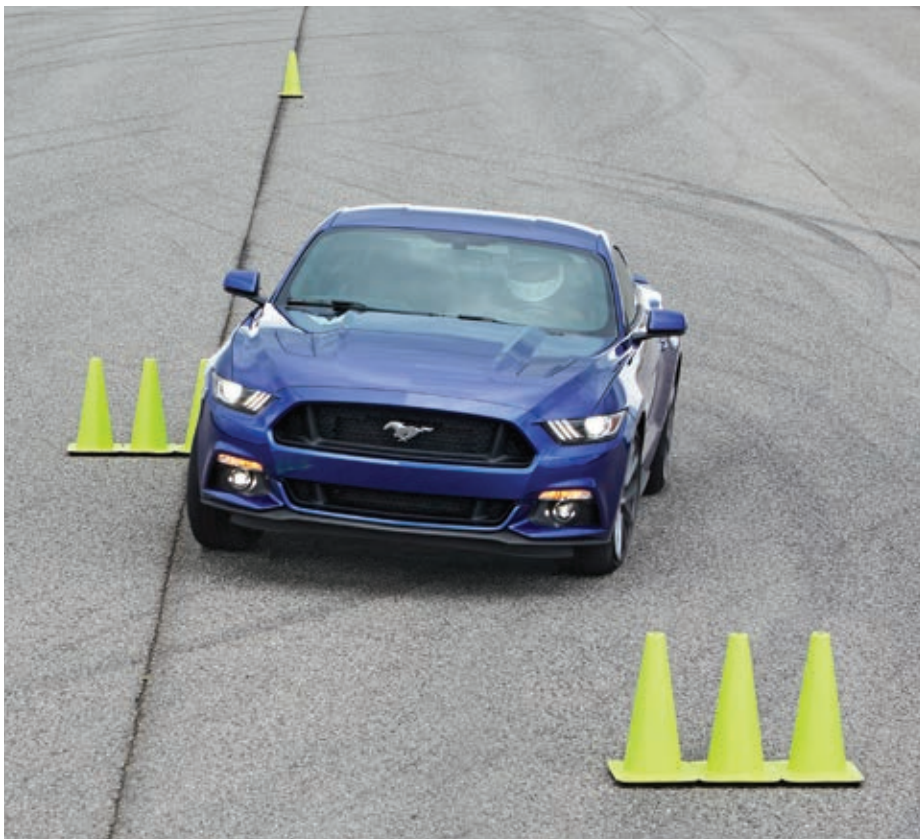
**Convertible life is easier than ever** with thoughtful touches like the new tonneau caps that slide easily in place to help give the lowered top a sleek finish.

**To perfect its top-down look**, the convertible sports exclusive design cues that set it apart from the fastback. Note the higher, straighter muscle line across its rear haunches. And its distinctively contoured trunk lid. The all-new 2015 Mustang convertible – our best one yet.

*GT Premium. Convertible. Deep Impact Blue. Ebony leather trim. Available equipment.*

The images and features on this page may differ from dealer's order.





## ASSERT YOUR INDEPENDENCE.

Our best-handling Mustang GT yet is ready for action. In fact, it's already proven itself in our most rigorous testing – logging more than 4 million kilometers.

**Holds the road better than ever** thanks in part to its all-new, fully independent, integral-link rear suspension. Based on a lower H-arm, a vertical link, an upper camber link and a toe link, this new setup helps Mustang deliver 2x better anti-squat and nearly 10x better anti-lift properties than its previous generation. Which gives it better pitch control during hard acceleration and braking.

**For even more grip**, unsprung mass is kept down by the use of high-strength aluminum alloy for the rear knuckles and H-arms.

**Better road feel, a better ride, and more precise handling** are just a few more benefits of the all-new suspension system, which incorporates a new double-ball-joint configuration up front as well.

**The most capable brake lineup ever offered on a Mustang** brings it all to a stop faster than you can say “let’s go again.”

*Pre-production vehicles shown.*



## RACERS: REACT INSTANTLY.

The all-new Mustang serves up hot new technology designed specifically for you. Next time the track starts getting slick, just tap a toggle switch<sup>1</sup> on the dash to adjust its Selectable Drive Modes.<sup>1</sup> And keep going.

**Choose from 4 modes:** Normal, Sport+, Track, and Snow/Wet. Each one activates predefined powertrain and chassis calibrations suited to that particular driving situation.

**Normal** mode delivers a balance of comfort and responsive handling for an engaging driving experience.

**Sport+** mode provides more responsive steering and throttle response, plus different shift points if your Mustang is equipped with the SelectShift<sup>®</sup> automatic transmission. It's great for more spirited driving on twisty roads.

**Track** mode, which is for track use only, allows skilled drivers to push the car closer to its limits on the track before the standard AdvanceTrac<sup>®</sup> electronic stability control intervenes. This mode is perfect for weekend track days and autocrosses because it lets you extract the absolute maximum from your vehicle.

**Snow/Wet** mode comes in handy when road conditions take a turn for the worse. It provides confident handling by retaining a connected-to-the-road feel without sacrificing any of the inherent composure of your new Mustang.

*EcoBoost<sup>®</sup> Premium. Fastback. Race Red. Available equipment.*

<sup>1</sup>Available feature.

The images and features on this page may differ from dealer's order.





# MUSTANG SPECIFICATIONS



GT Premium. Fastback. Ingot Silver Metallic. Available equipment.

## Standard Features

### Mechanical

4-wheel vented disc Anti-Lock Brake System (ABS)  
 Selectable-effort electric power-assisted steering (Standard, Sport, Comfort)  
 Spare wheel and tire

Suspension – Front: independent double-ball-joint MacPherson strut with stabilizer bar  
 Suspension – Rear: independent integral link with stabilizer bar

### Seating

4-way adjustable front head restraints  
 50/50 split-fold rear seat (fastback only)  
 Front bucket seats

### Interior

12-volt powerpoints (2)  
 Auto-dimming rearview mirror  
 Carpeted front floor mats  
 Cruise control  
 Full center floor console with storage bin  
 High-speed warning chime  
 Illuminated locking glove compartment  
 Intelligent Access with push-button start  
 Leather-wrapped steering wheel and parking brake handle  
 Power door locks  
 Power windows with global open and one-touch-up/-down feature  
 Rear view camera  
 Steering wheel-mounted cruise, audio and 5-way controls  
 Sun visors with illuminated vanity mirrors  
 Sunglasses storage bin  
 Tilt/telescoping steering column

### Exterior

Automatic headlamps with wiper activation  
 Black power sideview mirrors with integrated turn signal indicators, pony projection lamps, and integrated blind spot mirrors  
 Easy Fuel® capless fuel filler  
 Embedded radio antenna (fastback only)

HID headlamps with signature lighting  
 LED taillamps with sequential turn signals  
 Rear-window defroster  
 Windshield wipers – Variable-intermittent

### Safety & Security

Personal Safety System™ with dual-stage front airbags<sup>1</sup>  
 Active Knee-Airbag Glovebox<sup>1</sup>  
 AdvanceTrac® electronic stability control  
 Belt-Minder® front safety belt reminder  
 Driver's knee airbag<sup>1</sup>  
 Front-seat side airbags<sup>1</sup>  
 Illuminated Entry System  
 LATCH – Lower Anchors and Tether Anchors for Children  
 MyKey®  
 Perimeter alarm  
 Remote Keyless Entry System  
 Safety belt restraint system – Manual 3-point shoulder and lap safety belt system for all seating positions  
 SecuriLock® Passive Anti-Theft System  
 Side-curtain airbags<sup>1</sup> (fastback only)  
 SOS Post-Crash Alert System™  
 Individual Tire Pressure Monitoring System (excludes available spare)

## Engines<sup>2</sup>/Fuel Consumption<sup>2</sup> & Dimensions

### 3.7L Ti-VCT V6

304 net hp @ 6,500 rpm  
 280 lb.-ft. of net torque @ 4,000 rpm  
 6-speed manual 10.4 km/L  
 6-speed SelectShift® automatic 10.5 km/L

### 2.3L EcoBoost® I-4

325 net hp @ 5,500 rpm  
 323 lb.-ft. of net torque @ 3,000 rpm  
 6-speed manual 12.0 km/L  
 6-speed SelectShift automatic 12.0 km/L

### 5.0L Ti-VCT V8

421 net hp @ 6,500 rpm  
 391 lb.-ft. of net torque @ 4,250 rpm  
 6-speed manual 8.2 km/L  
 6-speed SelectShift automatic 8.8 km/L

Exterior mm (in.)	Fastback/Convertible
Wheelbase	2,720 (107.1)
Length	4,784 (188.3)
Height	1,381/1,394 (54.4/54.9)
Width – Excluding mirrors	1,916 (75.4)
Width – Including mirrors	2,080 (81.9)

Interior – Front	Fastback/Convertible
Head room	955/956 (37.6/37.6)
Shoulder room	1,430 (56.3)
Hip room	1,395 (54.9)
Leg room	1,131 (44.5)

Interior – Rear	Fastback/Convertible
Head room	884/907 (34.8/35.7)
Shoulder room	1,327/1,135 (52.2/44.7)
Hip room	1,203/1,111 (47.4/43.7)
Leg room	777/783 (30.6/30.8)

Capacities litres (cu. ft.)	Fastback/Convertible
Passenger volume	2,392/2,287 (84.5/80.8)
Luggage capacity	383/324 (13.5/11.4)
Total interior volume	2,775/2,611 (98.0/92.2)
Fuel capacity litres	
V6/V8	60.6
I-4	58.7

<sup>1</sup>Always wear your safety belt and secure children in the rear seat. <sup>2</sup>Data as per GCC Standardization Organization certification.

The images and features on this page may differ from dealer's order.





**Equipment Group 050A**  
Includes all standard features, plus:

**Mechanical**

- 3.7L Ti-VCT V6 engine
- 6-speed manual transmission
- 3.15:1 gear ratio with limited-slip rear differential

**Seating**

- 4-way manually adjustable driver's seat with height adjustment
- 2-way manually adjustable front-passenger seat
- Cloth seats

**Interior**

- AM/FM stereo/single-CD player with 6 speakers
- Ford SYNC® enhanced voice-activated, in-vehicle communications and entertainment system with 4.2" color LCD display in center stack, AppLink™ and 2 smart-charging USB ports
- Auxiliary audio input jack
- Single-zone manual air conditioning
- Track Apps™ located in instrument cluster

**Exterior**

- 17" Sparkle Silver-painted aluminum wheels with P235/55R17 all-season tires
- Black cloth top on convertible
- Dual bright slashed-cut exhaust tips

**Available Equipment Group**

**Equipment Group 051A** – Blade-style decklid spoiler, 6-way power driver's seat with power lumbar, LED fog lamps, and 18" Foundry Black-painted aluminum wheels

**Available Options & Package**

3.55:1 gear ratio with limited-slip rear differential  
6-speed SelectShift® automatic transmission with steering wheel-mounted paddle shifters and Remote Start System

**Enhanced Security Package** includes electronic locking center console, Active Anti-Theft System, electronic steering column lock and wheel locks  
Reverse Sensing System



Ebony cloth trim. Available equipment.

LED taillamps with sequential turn signals.

HID headlamps with signature lighting.

Intelligent Access with push-button start.

<sup>1</sup>Late availability. Availability varies by market.

The images and features on this page may differ from dealer's order.



17" Sparkle Silver-Painted Aluminum Standard



18" Foundry Black-Painted Aluminum Included: 051A



## EcoBoost<sup>®1</sup>

Equipment Group 100A  
Includes select V6 features, plus:

### Mechanical

2.3L EcoBoost I-4 engine  
Active noise cancellation

### Seating

6-way power driver's seat with power lumbar  
6-way power front-passenger seat

### Exterior

LED fog lamps

### Packages

**EcoBoost Performance Package** includes larger radiator; upsized rear sway bar; heavy-duty front springs; unique chassis tuning; unique air splitter; larger brake rotors with 4-piston calipers; 19" Ebony Black-painted aluminum wheels with 255/40R19 summer-only tires; unique electric power-assisted steering, ABS and electronic stability control tuning; Engine Turn aluminum dash panel; and 3.55:1 gear ratio with limited-slip rear differential

**Enhanced Security Package** includes electronic-locking center console, Active Anti-Theft System, electronic steering column lock and wheel locks

### Available Options

6-speed SelectShift<sup>®</sup> automatic transmission with steering wheel-mounted paddle shifters, 3.15:1 gear ratio with limited-slip rear differential, and Remote Start System<sup>2</sup>

19" Premium Luster Nickel-painted aluminum wheels<sup>3</sup>

RECARO<sup>®</sup> Ebony sport cloth seats with manual adjustment

Reverse Sensing System

## EcoBoost Premium<sup>2</sup>

Equipment Group 200A  
Includes select EcoBoost features, plus:

### Mechanical

Selectable Drive Modes with 4-gang toggle switch pack (Normal, Sport+, Track, Snow/Wet)

### Seating

Heated and cooled front seats  
Leather-trimmed seats

### Interior

Aluminum brake and accelerator pedals

Ambient lighting

AM/FM stereo/single-CD player with 9 speakers and amplifier

Bright-finish door speaker surrounds

Dual-zone electronic automatic temperature control

Illuminated door-sill plates

Premium door-trim panel inserts

Satin Brush aluminum dash panel

SYNC<sup>®</sup> with MyFord Touch<sup>®</sup> voice-activated, in-vehicle connectivity system with 8" color LCD touch screen in center stack and media hub with USB port

### Exterior

Rear diffuser

### Available Equipment Group

**Equipment Group 201A** – Shaker<sup>™</sup> Pro Audio System with 12 speakers and amplifier, driver's seat and sideview mirror memory feature, and BLIS<sup>®</sup> (Blind Spot Information System) with cross-traffic alert (memory feature not available with optional RECARO seats)

### Available Options & Packages

6-speed SelectShift automatic transmission with steering wheel-mounted paddle shifters and Remote Start System<sup>2</sup>

19" Premium Luster Nickel-painted aluminum wheels<sup>3</sup>

**50 Years Appearance Package** includes 50 Years grille with bright surround, unique rear gas cap badge, Axle Spin aluminum dash panel, and unique seat and door-trim panel inserts (not available with Premier Trim With Color Accent Group or RECARO seats)

Adaptive cruise control and collision warning with brake support, and rain-sensing windshield wipers<sup>2</sup>

**Premier Trim With Color Accent Group**<sup>4</sup> includes Charcoal Black interior environment with color-accented seats and unique door-trim panel inserts (not available with 50 Years Appearance Package)

RECARO Ebony sport leather-trimmed seats with manual adjustment<sup>4</sup> (fastback only; not available with 50 Years Appearance Package, heated and cooled front seats or memory feature)

Reverse Sensing System

Voice-activated Navigation Radio System<sup>2</sup>

## EcoBoost & EcoBoost Premium



19" Ebony Black-Painted Aluminum  
Standard: EcoBoost  
and EcoBoost Premium



19" Premium Luster Nickel-Painted Aluminum  
Optional: EcoBoost  
and EcoBoost Premium

EcoBoost. RECARO Ebony sport cloth seats. Available equipment.

EcoBoost Premium. Premier Trim With Color Accent Group. Red Line.

EcoBoost Premium. Cooled front seats.

EcoBoost Premium. Illuminated door-sill plates.

The images and features on this page may differ from dealer's order.

<sup>1</sup>Fastback only. <sup>2</sup>Availability varies by market. <sup>3</sup>Late availability. <sup>4</sup>When certain packages are ordered in combination with other packages, final content may vary. See your dealer for additional details. RECARO is a registered trademark of RECARO Beteiligungs-GmbH.



## GT & GT Premium



GT Premium. Ebony leather trim. Available equipment.

GT Premium. Ceramic leather trim. Available equipment.

GT Premium. 50 Years Appearance Package.

GT Premium. Selectable Drive Modes toggle switch pack.

<sup>1</sup>Fastback only. <sup>2</sup>Availability varies by market. <sup>3</sup>When certain packages are ordered in combination with other packages, final content may vary. See your dealer for additional details.

The images and features on this page may differ from dealer's order.

## GT<sup>1</sup>

### Equipment Group 300A

Includes select EcoBoost® features, plus:

#### Mechanical

5.0L Ti-VCT V8 engine  
3.31:1 gear ratio with limited-slip rear differential  
Electronic Line-Lock (track use only)  
Engine oil cooler  
Larger brake rotors with 4-piston calipers  
Launch control (manual transmission only)

#### Exterior

18" Magnetic-painted machined aluminum wheels with P235/50R18 all-season tires  
Blade decklid body-color spoiler  
Dual bright rolled and polished exhaust tips  
Hood-vented air extractors

#### Package

**Enhanced Security Package** includes electronic-locking center console, Active Anti-Theft System, electronic steering column lock and wheel locks

#### Available Options

3.55:1 gear ratio with limited-slip rear differential  
6-speed SelectShift® automatic transmission with steering wheel-mounted paddle shifters, 3.15:1 gear ratio with limited-slip rear differential, and Remote Start System<sup>2</sup>  
18" Foundry Black-painted aluminum wheels with 235/50R18 all-season tires  
RECARO® Ebony sport cloth seats with manual adjustment  
Reverse Sensing System  
Spoiler delete

## GT Premium

### Equipment Group 400A

Includes select GT features, plus:

#### Mechanical

Selectable Drive Modes with 4-gang toggle switch pack (Normal, Sport+, Track, Snow/Wet)

#### Seating

Heated and cooled front seats  
Leather-trimmed seats

#### Interior

Aluminum brake and accelerator pedals  
Ambient lighting  
AM/FM stereo/single-CD player with 9 speakers and amplifier  
Bright-finish door speaker surrounds  
Dual-zone electronic automatic temperature control  
Illuminated door-sill plates  
Leather-wrapped parking brake handle  
Premium door-trim panel inserts  
Satin Brush aluminum dash panel  
SYNC® with MyFord Touch® voice-activated, in-vehicle connectivity system with 8" color LCD touch screen in center stack and media hub with USB port

#### Exterior

Rear diffuser

#### Available Equipment Group

**Equipment Group 401A** – Shaker™ Pro Audio System with 12 speakers and amplifier, driver's seat and sideview mirror memory feature, and BLIS® (Blind Spot Information System) with cross-traffic alert (memory feature not available with optional RECARO seats)

### Available Options & Packages

3.55:1 gear ratio with limited-slip rear differential  
6-speed SelectShift automatic transmission with steering wheel-mounted paddle shifters, 3.15:1 gear ratio with limited-slip rear differential, and Remote Start System  
18" Foundry Black-painted aluminum wheels with 235/50R18 all-season tires (not available with 50 Years Appearance Package)  
19" Dark Stainless premium painted aluminum wheels with 255/40R19 all-season tires (not available with 50 Years Appearance Package or GT Performance Package)  
**50 Years Appearance Package** includes 50 Years grille with bright surround, 19" premium Luster Nickel-painted aluminum wheels with 255/40R19 all-season tires, unique rear gas cap badge, Axle Spin aluminum dash panel, and unique seat and door-trim panel inserts (not available with optional wheels, RECARO seats, Premier Trim With Color Accent Group or spoiler delete)  
Adaptive cruise control and collision warning with brake support, and rain-sensing windshield wipers<sup>2</sup>  
**Premier Trim With Color Accent Group**<sup>3</sup> includes Charcoal Black interior environment with color-accented seats and unique door-trim panel inserts (not available with 50 Years Appearance Package)  
RECARO Ebony sport leather-trimmed seats with manual adjustment<sup>3</sup> (fastback only; not available with 50 Years Appearance Package, heated and cooled front seats or memory feature)  
Reverse Sensing System  
Spoiler delete (not available with 401A or 50 Years Appearance Package)  
Voice-activated Navigation Radio System<sup>2</sup>



18" Magnetic-Painted Machined Aluminum Standard



18" Foundry Black-Painted Aluminum Optional



19" Dark Stainless Premium Painted Aluminum Optional: GT Premium



19" Premium Luster Nickel-Painted Aluminum Included: 50 Years Appearance Package



**Exteriors** This helpful guide is intended for selecting an exterior color – not features, options or a trim level.



Oxford White



Triple Yellow Tri-coat



Competition Orange



Race Red



Ruby Red Metallic Tinted Clearcoat



Deep Impact Blue Metallic



Ingot Silver Metallic



Guard Metallic



Magnetic Metallic

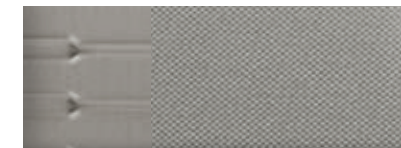


Black

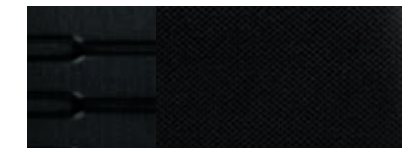
**Interiors**



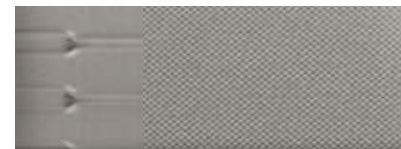
1 Ebony Cloth



2 Ceramic Cloth



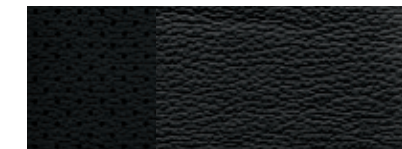
3 Ebony Cloth



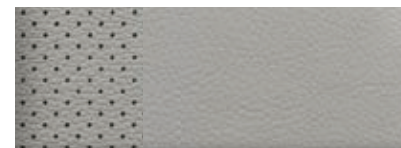
4 Ceramic Cloth



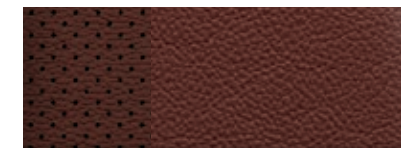
5 Ebony RECARO® Sport Cloth



6 Ebony Leather with Perforated Inserts



7 Ceramic Leather with Perforated Inserts



8 Dark Saddle Leather with Perforated Inserts



9 Ebony RECARO Sport Leather



10 Ebony Vinyl with Perforated Leather Inserts



11 Red Line Vinyl with Perforated Leather Inserts



12 Raven Black Vinyl with Perforated Leather Inserts

Exteriors	Interiors											
	V6		EcoBoost®/GT			EcoBoost Premium/GT Premium						
Oxford White	1	2	3	4	5	6	7	8	9	10	11	12
Triple Yellow Tri-coat <sup>1</sup>	1		3	5		6		9	10	12		
Competition Orange	1	2	3	4	5	6	7	9	10	12		
Race Red	1	2	3	4	5	6	7	9	10	12		
Ruby Red Metallic Tinted Clearcoat <sup>1</sup>	1	2	3	4	5	6	7	9	10	11	12	
Deep Impact Blue Metallic	1	2	3	4	5	6	7	8	9	10	11	12
Ingot Silver Metallic	1	2	3	4	5	6	7	8	9	10	11	12
Guard Metallic	1	2	3	4	5	6	7	8	9	10	12	
Magnetic Metallic	1	2	3	4	5	6	7	8	9	10	11	12
Black	1	2	3	4	5	6	7	8	9	10	11	12

10, 11 – Premier Trim With Color Accent Group 12 – 50 Years Appearance Package

<sup>1</sup>Additional charge.

Colors are representative only. See your dealer for actual paint/trim options.





QUALITY, GREEN, SAFE & SMART.

me.ford.com



GT Fastback in Ingot Silver customized with 19" Ebony Black-painted aluminum wheels, wheel center caps, wheel lock kit, and Ford Custom Graphics by 3M Original Wraps<sup>1</sup>

All-weather floor mats

Tablet cradle

Full vehicle covers

Sport pedals

**Exterior**

- Hood protector<sup>1</sup>
- Rear spoilers

**Interior**

- Ash cup/coin holder
- Auto-dimming rearview mirror
- Cargo organizers and protectors
- Carpeted floor mats
- Door sill plates
- Gear indicator shift knob<sup>1</sup>
- Interior light kit
- Leather-trimmed interior seating<sup>1</sup>

**Electronics**

- Bumper-mounted warning sensor systems<sup>1</sup>
- Portable DVD rear-seat entertainment systems<sup>1</sup>

<sup>1</sup>Ford Licensed Accessory.

The images and features on this page may differ from dealer's order.

**Ford Genuine Parts & Service.** Keep your vehicle in optimum operating condition with scheduled maintenance service. Ford and Lincoln Dealership technicians know your vehicle inside and out. They are continuously trained by Ford Motor Company and the parts they use are specifically designed for your vehicle. □ Ford Original Accessories will be warranted for whichever provides you the greatest benefit: 24 months/unlimited distance, or the remainder of your Bumper-to-Bumper 3-year/60,000-km New Vehicle Limited Warranty. Ford Licensed Accessories (FLA) are warranted by the accessory manufacturer's warranty. FLA are designed and developed by the accessory manufacturer and have not been designed or tested to Ford Motor Company engineering requirements. Contact your Ford Dealer for details and/or a copy of all limited warranties.

Comparisons based on competitive models (class is High-Power Sports Cars), publicly available information and Ford certification data at time of printing. Vehicles may be shown with optional equipment. Features may be offered only in combination with other options or subject to additional ordering requirements/limitations. Dimensions shown may vary due to optional features and/or production variability. Information is provided on an "as is" basis and could include technical, typographical or other errors. Ford makes no warranties, representations, or guarantees of any kind, express or implied, including but not limited to, accuracy, currency, or completeness, the operation of the information, materials, content, availability, and products. Ford reserves the right to change product specifications, pricing and equipment at any time without incurring obligations. Your Ford Dealer is the best source of the most up-to-date information on Ford vehicles.

Published by Ford Motor Company  
Printed in United Arab Emirates

©2014 Ford Motor Company



**GO FURTHER**



The images and features on this page may differ from dealer's order.

قد تختلف الصور والمميزات المبينة في هذه الصفحة عن دليل الطلب الخاص بالوكلاء.

**إلى أبعد مدى**