



DISTRIBUTION CONNECTORS



SECTION D1

OTHER DISTRIBUTION PRODUCTS

Wildlife Protectors

Sealants & Inhibitor Compounds

Duct Sealing Compounds

Tamperproof Equipment Locks

Secondary Line Spacers

Reference Tables

Suspension Clamps

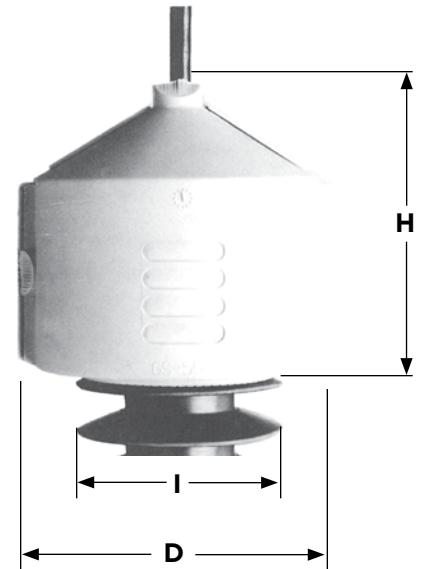
OTHER DISTRIBUTION ONE PIECE WILDLIFE PROTECTOR

POLYPROPYLENE
GS Series

- Designed to provide protection for equipment bushin from accidental contact by squirrels, birds or other wildlife.
- Hinged construction for easy installation or retrofit on a variety of bushing insulators. Equipment tap wire does not have to be disconnected during installation.
- Flexible “fingers” on cable entry ports close around tap conductor and cover unused ports.
- Flexible “fingers” at base of protector provide a snug fit on various size bushings.

Material: Track resistant polypropylene stabilized with UV inhibitors for long term performance. Munsell gray color.

Δ NOTE: GS565 is polyethylene with UV inhibitors. Munsell gray color.



GS555 Series

Figure 1



GS560 Series

Figure 2



GS565 Series Δ

Figure 3

Ordering Information

CATALOG NUMBER	FIGURE NO.	BUSHING ACCOMMODATED	LATCH TYPE	DIMENSIONS INCHES (MM)			WT. LB. (KG)
				D	H	NOMINAL INSULATOR SKIRT DIAMETER	
GS555H	1	Distribution and Transformer Bushings	2 Washboard-Peg	5.38 (136.92)	5.57 (141.76)	3.75" to 5.25" (95.44 to 133.61)	.28 (.13)
GS560H	2	Distribution and Transformer Bushings	2 Pinch Latches, One Top Clasp	4.88 (124.20)	9.00 (224.05)	3.75" to 4.75" (95.44 to 120.59)	.48 (.21)
GS565	3	Transformer Bushings	1 Piece Slot Design-Snap Joint	4.25 (108.16)	9.75 (248.14)	3.25" to 4.25" (82.71 to 108.16)	.40 (.18)



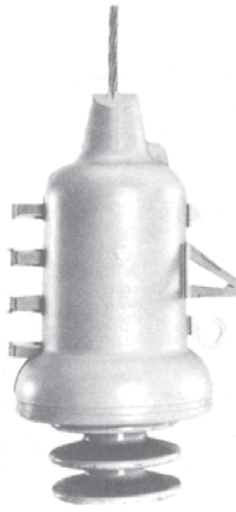
OTHER DISTRIBUTION ONE PIECE WILDLIFE PROTECTOR

POLYPROPYLENE
GS



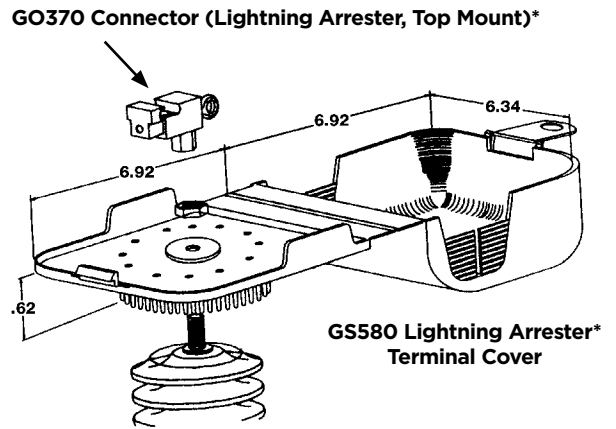
GS567

Figure 1



GS570

Figure 2



***Figure 3**

Ordering Information

CATALOG NUMBER	FIGURE NO.	BUSHING ACCOMMODATED	DIMENSIONS INCHES (MM)			WT. LB. (KG)
			D	H	NOMINAL INSULATOR SKIRT DIAMETER	
GS567	1	Recloser, Regulator and Pot Head Bushings	6.38 (162.37)	10.50 (267.23)	5.00" to 6.25" (127.25 to 159.06)	.80 (.36)
GS570	2	Larger diameter bushings such as substation transformer & circuit breakers	8.12 (206.65)	13.75 (349.94)	6.75" to 8.00" (171.79 to 203.60)	1.21 (.55)
GS580	3	Covers Arrester to Line Connection (Lightning Arrester)	6.34 X 6.92 (161.35 X 176.11)	5.00 (127.25)	Fits up to 6" Diameter Arrester (153.70)	.40 (.18)

* See also GC207LA or LAT Lightning Arrester Terminals for bottom side of lightning arresters.

DI
2



OTHER DISTRIBUTION ONE PIECE WILDLIFE PROTECTOR

VINYL
CC101 / CC170

- Designed to provide protection of cutouts from accidental contact by squirrels, birds or other wildlife.
- Universal one-piece design for easy installation or retrofit.
- Fits Chance® and other major manufacturer's cutouts. See sizes below.
- Fits both Polymer and Porcelain type cutouts.
- Has hot stick eye .
- Gray color

Material: Proprietary low track PVC that is UV stabilized for long-term performance.

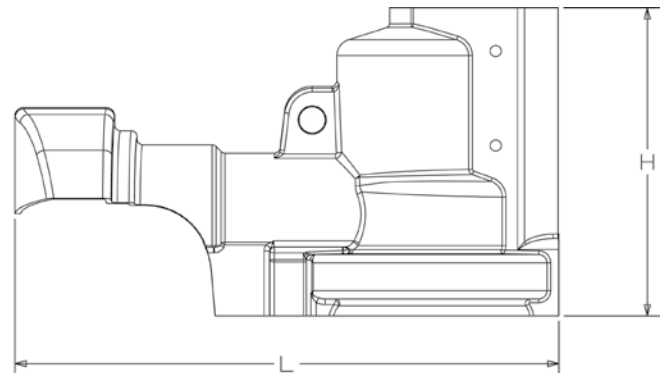
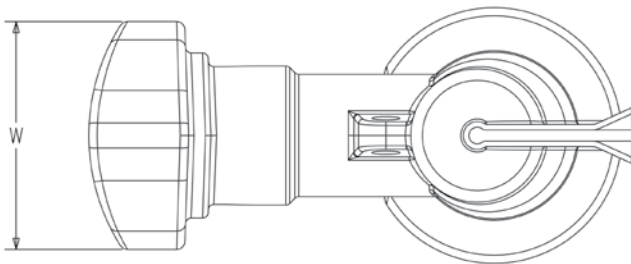
NOT INTENDED FOR USE AS A SAFETY DEVICE.



CC101



CC170



Ordering Information

CATALOG NUMBER	FITS CUTOUT SIZES (kV)	BIL RATING	HOT-STICK EYE (Y/N)	DIMENSIONS INCHES (MM)			GROSS WEIGHT LBS (KG)
				LENGTH	WIDTH	HEIGHT	
CC101	15, 27	150	Y	11 (279.4)	5 (127)	7 (177.8)	1.31 (.59)
CC170	15, 27, 36	170	Y	12 (304.8)	5 (127)	7 (177.8)	1.48 (.67)

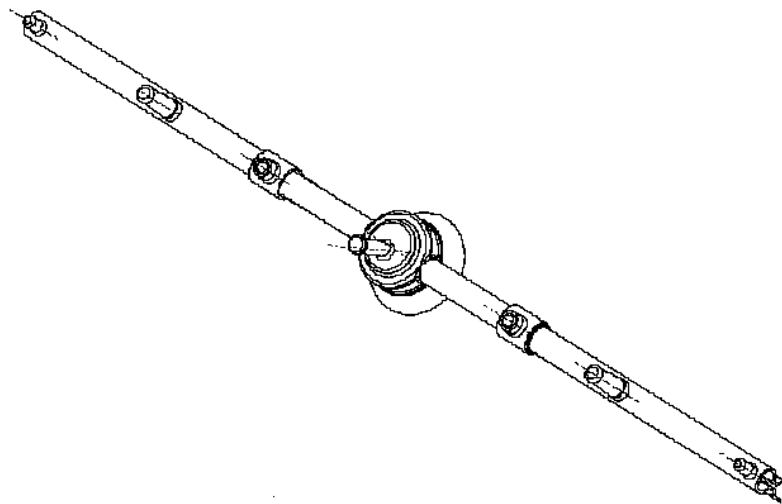
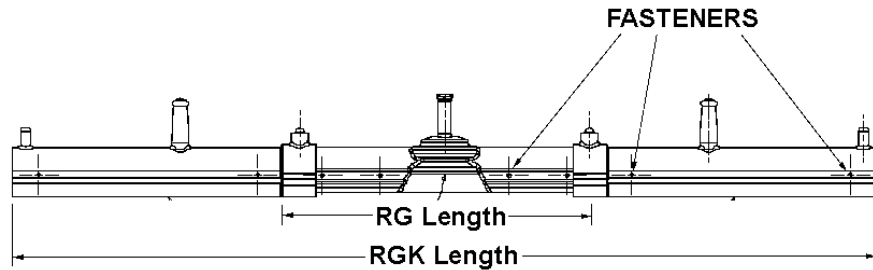


OTHER DISTRIBUTION WILDLIFE PROTECT

VINYL
RG100 series

- For use as raptor guard on insulators.
- For wildlife protection only.
- Each piece includes non-metallic fasteners for additional mechanical strength.

Body Material: Proprietary, UV stabilized low trac vinyl kits come pre-packaged in plastic bags.



Ordering Information

CATALOG NUMBER	INSULATOR SIZE	LENGTH INCHES (MM)	WEIGHT EA. LBS (KG)
RG101C	C-neck	24 (609)	1.1 (.50)
RG102F	F-neck	24 (609)	1.5 (.68)
RG103J	J-neck	26 (660)	5.5 (2.48)
RG101CK	C-neck	66 (1676)	4.1 (1.85)
RG102FK	F-neck	66 (1676)	4.5 (2.03)
RG103JK	J-neck	68 (1739)	8.5 (3.83)
RGE100	extension	23 (584)	1.5 (.68)

"K" suffix - Kit consists of insulator cover, two RGE100 extensions and fasteners

DI
4



DISTRIBUTION / TRANSMISSION / SUBSTATION ELECTRICAL JOINT COMPOUND / INHIBITOR

Inhibitor Application Guide

CAT. NUMBER	TRADE NAME	DESC / SIZE	SERVICE TEMP.	TO BE USED ON:			BASE OIL		GRIT TYPE			COLOR
				COMP-RESSION	GROOVE / BOLTED	PAD	SYNTH. / VEG.	PETROL.	FINE CONDUCT	NON CONDUCT	NON GRITTED	
VS8HTJC	ANDERSON	8 OZ. PLASTIC BOTTLE	-40°F to +480°F (-40°C to 250°C)	•	•	•	•		•			GRAY
HTJC16	FARGO	CAULK TUBE	-40°F to +480°F (-40°C to 250°C)	•	•	•	•		•			GRAY
UJC8	FARGO	8 OZ. PLASTIC BOTTLE	-40°F to +300°F (-40°C to 149°C)	•				•		•		TAN
UJC16	FARGO	CAULK TUBE	-40°F to +300°F (-40°C to 149°C)	•				•		•		TAN
GF138	FARGOLENE	8 OZ. PLASTIC BOTTLE	-40°F to +300°F (-40°C to 149°C)		•	•	•				•	GREEN
GF158	FARGOLENE	8 OZ. PLASTIC BOTTLE	-40°F to +300°F (-40°C to 149°C)	•			•			•		GREEN
GF178	FARGOLENE	8 OZ. PLASTIC BOTTLE	-40°F to +300°F (-40°C to 149°C)		•	•	•				•	GRAY
GF198	FARGOLENE	8 OZ. PLASTIC BOTTLE	-40°F to +300°F (-40°C to 149°C)	•			•			•		GRAY
GF193*	FARGOLENE	8 LB. CAN	-40°F to +300°F (-40°C to 149°C)	•			•			•		GRAY
M19203	CHANCE ZLN-100	8 OZ. PLASTIC BOTTLE	-40°F to +300°F (-40°C to 149°C)	•				•		•		GRAY/BROWN
M19204	CHANCE ZLN-100	4 OZ. PLASTIC BOTTLE	-40°F to +300°F (-40°C to 149°C)	•				•		•		GRAY/BROWN
M19205	CHANCE ZLN-200	8 OZ. PLASTIC BOTTLE	-40°F to +300°F (-40°C to 149°C)	•			•			•		GRAY/BROWN
VS8B	ANDERSON VERSA-SEAL	8 OZ. PLASTIC BOTTLE	-40°F to +300°F (-40°C to 149°C)		•	•	•				•	YELLOW
VSG8B	ANDERSON VERSA-SEAL	8 OZ. PLASTIC BOTTLE	-40°F to +300°F (-40°C to 149°C)	•			•			•		BLUE
155QC	ANDERSON VERSA-SEAL	1 QUART CAN	-40°F to +300°F (-40°C to 149°C)		•	•		•			•	TAN
ING4	ANDERSON INHIBOX	4 OZ. PLASTIC BOTTLE	-40°F to +300°F (-40°C to 149°C)		•	•	•				•	GRAY
ING8	ANDERSON INHIBOX	8 OZ. PLASTIC BOTTLE	-40°F to +300°F (-40°C to 149°C)		•	•	•				•	GRAY
INGGC	ANDERSON INHIBOX	1 GAL. CAN	-40°F to +300°F (-40°C to 149°C)		•	•	•				•	GRAY
I8	ANDERSON INHIBOX 220	8 OZ. PLASTIC BOTTLE	-40°F to +300°F (-40°C to 149°C)	•			•			•		GRAY
IGC	ANDERSON INHIBOX 220	1 GAL. CAN	-40°F to +300°F (-40°C to 149°C)	•			•			•		GRAY

* MINIMUM ORDER QUANTITIES MAY BE SPECIFIED -- CONSULT FACTORY

NOTE: ALL COMPOUNDS HAVE A GREATER THAN 500°F (260°C) WITHSTAND TEMPERATURE



DISTRIBUTION / TRANSMISSION / SUBSTATION ELECTRICAL JOINT COMPOUND / INHIBITOR

DESCRIPTION
INHIBITORS

HTJC



Anderson Versa-Seal® High Temperature Joint Compound (HTJC) is a synthetic-based, gritted, high-temperature compound developed for use on two-piece compression fittings on ACSS conductors rated 250° C.

HTJC employs conductive grit and thermally conductive filler to reduce connection resistance and allows connectors to operate at cooler temperatures.

This electrically and thermally conductive compound is also ideal for use on standard aluminum conductor (AAC and ACSR) fittings including Fargo Uni-Grip® deadends, splices and terminals.

HTJC fills internal voids in compression and bolted joints, sealing out moisture. HTJC is also an excellent choice for pad-to-pad applications as the grit is very fine and conductive.

See table labeled “Joint Compound Required” for Fargo transmission fittings.

See table labeled “Inhibitor Application Guide” for other HPS Inhibitors.

HTJC Inhibitor												
CAT. NUMBER	TRADE NAME	DESC / SIZE	SERVICE TEMP.	TO BE USED ON:			BASE OIL		GRIT TYPE			COLOR
				COMP-RESSION	GROOVE/BOLTED	PAD	SYNTH./VEG.	PETROL.	FINE CONDUCT	NON CONDUCT	NON GRITTED	
VS8HTJC	ANDERSON	8 OZ. PLASTIC BOTTLE	-40°F to +480°F (-40°C to 250°C)	●	●	●	●		●			GRAY
HTJC16	FARGO	CAULK TUBE	-40°F to +480°F (-40°C to 250°C)	●	●	●	●		●			GRAY

UJC



Fargo Universal Jointing Compound has been specifically designed for tension applications for compression transmission fittings to fill the internal voids, sealing out moisture and air.

UJC mineral oil based compound is suitable for standard aluminum conductor (AAC and ACSR) fittings.

See table labeled “Joint Compound Required” for Fargo transmission fittings.

See table labeled “Inhibitor Application Guide” for other HPS Inhibitors.

UJC Inhibitor												
CAT. NUMBER	TRADE NAME	DESC / SIZE	SERVICE TEMP.	TO BE USED ON:			BASE OIL		GRIT TYPE			COLOR
				COMP-RESSION	GROOVE/BOLTED	PAD	SYNTH./VEG.	PETROL.	FINE CONDUCT	NON CONDUCT	NON GRITTED	
UJC8	FARGO	8 OZ. PLASTIC BOTTLE	-40°F to +300°F (-40°C to 149°C)	●				●		●		TAN
UJC16	FARGO	CAULK TUBE	-40°F to +300°F (-40°C to 149°C)	●				●		●		TAN

DI 6



DISTRIBUTION / TRANSMISSION / SUBSTATION ELECTRICAL JOINT COMPOUND / INHIBITOR

DESCRIPTION
INHIBITORS

GF

Fargolene® inhibitors are specially compounded corrosion inhibitors recommended for the contact surfaces of all electrical connections to seal out moisture and protect the joint.

- Stable over a wide range of temperatures.
- Available in gritted and non-gritted formulations.
- Organic and synthetic base varieties.
- Workable at subfreezing temperatures and will adhere to cold metal surfaces permitting easy application either directly on the contact surfaces from the squeeze bottle or by troweling with a knife.
- Water repellent, weather resistant, and inert to copper, aluminum, zinc, tin, cadmium, steel, and neoprene rubber; providing a stable compatible corrosion inhibitor.
- On grit bearing inhibitor, the fine powdered grit punctures through high resistance oxide films, improving the electrical connection, as well as the mechanical holding strength.
- For the very best results, a thorough cleaning of the conductor and connector contact areas and a liberal application of Fargolene inhibitor is recommended.

See application guide for more information.

See table labeled "Inhibitor Application Guide" for other HPS Inhibitors.



GF Inhibitor												
CAT. NUMBER	TRADE NAME	DESC / SIZE	SERVICE TEMP.	TO BE USED ON:			BASE OIL		GRIT TYPE			COLOR
				COMP-RESSION	GROOVE / BOLTED	PAD	SYNTH. / VEG.	PETROL.	FINE CONDUCT	NON CONDUCT	NON GRITTED	
GF138	FARGOLENE	8 OZ. PLASTIC BOTTLE	-40°F to +300°F (-40°C to 149°C)		•	•	•				•	GREEN
GF158	FARGOLENE	8 OZ. PLASTIC BOTTLE	-40°F to +300°F (-40°C to 149°C)	•			•				•	GREEN
GF178	FARGOLENE	8 OZ. PLASTIC BOTTLE	-40°F to +300°F (-40°C to 149°C)		•	•	•				•	GRAY
GF198	FARGOLENE	8 OZ. PLASTIC BOTTLE	-40°F to +300°F (-40°C to 149°C)	•			•				•	GRAY
GF193*	FARGOLENE	8 LB. CAN	-40°F to +300°F (-40°C to 149°C)	•			•				•	GRAY



DISTRIBUTION / TRANSMISSION / SUBSTATION ELECTRICAL JOINT COMPOUND / INHIBITOR

DESCRIPTION
INHIBITORS

ZLN

Chance® ZLN inhibitor improves and stabilizes aluminum, copper, and bi-metallic connections.

- Available in petroleum and non-petroleum based formulations.
- Water resistant.
- Gritted formula to fill non-contact surface junctions.

See application guide for more information.

See table labeled “Inhibitor Application Guide” for other HPS inhibitors.



ZLN Inhibitor

CAT. NUMBER	TRADE NAME	DESC / SIZE	SERVICE TEMP.	TO BE USED ON:			BASE OIL		GRIT TYPE			COLOR
				COMP-RESSION	GROOVE / BOLTED	PAD	SYNTH. / VEG.	PETROL.	FINE CONDUCT	NON CONDUCT	NON GRIT-TED	
M19203	CHANCE ZLN-100	8 OZ. PLASTIC BOTTLE	-40°F to +300°F (-40°C to 149°C)	•				•		•		GRAY/BROWN
M19204	CHANCE ZLN-100	4 OZ. PLASTIC BOTTLE	-40°F to +300°F (-40°C to 149°C)	•				•		•		GRAY/BROWN
M19205	CHANCE ZLN-100	8 OZ. PLASTIC BOTTLE	-40°F to +300°F (-40°C to 149°C)	•			•			•		GRAY/BROWN

VERSA-SEAL 155



Type 155, Anderson Versa-Seal® electrical joint compound is recommended for use on all bare aluminum and copper application, and is a petroleum-based formulation.

- 155 is recommended for flat-to-flat and grooved bolted connections
- Tan-tinted color

See table labeled “Inhibitor Application Guide” for other HPS inhibitors.

155 Inhibitor

CAT. NUMBER	TRADE NAME	DESC / SIZE	SERVICE TEMP.	TO BE USED ON:			BASE OIL		GRIT TYPE			COLOR
				COMP-RESSION	GROOVE / BOLTED	PAD	SYNTH. / VEG.	PETROL.	FINE CONDUCT	NON CONDUCT	NON GRIT-TED	
155QC	ANDERSON VERSA-SEAL	1 QUART CAN	-40°F to +300°F (-40°C to 149°C)		•	•		•			•	TAN

DI 8



DISTRIBUTION / TRANSMISSION / SUBSTATION ELECTRICAL JOINT COMPOUND / INHIBITOR

DESCRIPTION
INHIBITORS

VERSA-SEAL®
VS / VG

VS type Anderson VERSA-SEAL®, non-gritted electrical joint compound is UL listed for all aluminum and copper applications, such as pad-to-pad surfaces.

VSG type Anderson Versa-Seal®, gritted electrical joint compound is UL listed for all aluminum and copper compression connections. It is not recommended for use as a lubricant on threaded fittings as improper torque values or thread galling may occur.

- **VS** is a non-petroleum, non-toxic, non-gritted compound for use where EPDM, natural rubber, as well as polyethylene insulating products, may come in contact with the sealant.
- **VSG** is a non-petroleum, non-toxic gritted compound for use where EPDM, natural rubber, as well as polyethylene insulating products, may come in contact with the sealant.
- **VS** is recommended for bolted joints, flat-to-flat contact surfaces, terminal and lug tongues, grooves of bolted parallel connectors or hot-line clamps, lubricating insulating sleeves and caps, and for improving electrical conductivity on all metallic conduit threads.
- **VSG** is recommended for NEMA minimum tension compression terminals. VSG helps break oxide films on contact surfaces while enhancing conductivity between conductor strands with its conductive grit. Also for two-piece full tension dead-ends and sleeves.
- Yellow tint for **VS** identification.
- Blue tint for **VSG** identification.



See table labeled "Inhibitor Application Guide" for other HPS inhibitors.

VS / VSG Inhibitor												
CAT. NUMBER	TRADE NAME	DESC / SIZE	SERVICE TEMP.	TO BE USED ON:			BASE OIL		GRIT TYPE			COLOR
				COMP-RESSION	GROOVE / BOLTED	PAD	SYNTH. / VEG.	PETROL.	FINE CONDUCT	NON CONDUCT	NON GRITTED	
VS8B	ANDERSON VERSA-SEAL	8 OZ. PLASTIC BOTTLE	-40°F to +300°F (-40°C to 149°C)		•	•	•				•	YELLOW
VSG8B	ANDERSON VERSA-SEAL	8 OZ. PLASTIC BOTTLE	-40°F to +300°F (-40°C to 149°C)	•			•			•		BLUE



DISTRIBUTION / TRANSMISSION / SUBSTATION ELECTRICAL JOINT COMPOUND / INHIBITOR

DESCRIPTION
INHIBITORS
INHIBOX
ING



ING series Inhibox non-gritted, non-toxic electrical joint compound is recommended for rigid bus connections between aluminum-to-aluminum and aluminum-to-copper applications.

- Non-gritted with zinc flakes.
- Non-rubber swelling, electrically conductive contact aid and sealant.
- Recommended for flat-to-flat contact surfaces.
- Improves electrical continuity for grounding on threaded metal conduit.

See application guide for more information.

See table labeled "Inhibitor Application Guide" for other HPS inhibitors.

ING Inhibitor												
CAT. NUMBER	TRADE NAME	DESC / SIZE	SERVICE TEMP.	TO BE USED ON:			BASE OIL		GRIT TYPE			COLOR
				COMP-RESSION	GROOVE / BOLTED	PAD	SYNTH. / VEG.	PETROL.	FINE CONDUCT	NON CONDUCT	NON GRIT- TED	
ING4	ANDERSON INHIBOX 220	4 OZ. PLASTIC BOTTLE	-40°F to +300°F (-40°C to 149°C)		•	•	•				•	GRAY
ING8	ANDERSON INHIBOX 220	8 OZ. PLASTIC BOTTLE	-40°F to +300°F (-40°C to 149°C)		•	•	•				•	GRAY
INGGC	ANDERSON INHIBOX 220	1 GAL. CAN	-40°F to +300°F (-40°C to 149°C)		•	•	•				•	GRAY

INHIBOX
I220

- Contains aluminum oxide grit and zinc flakes to create fresh metal interfaces.
- Non-rubber swelling, electrically conductive contact aid and sealant.
- Recommended for bolted connectors and non-tension compression connectors on cable conductors.
- Not recommended as a lubricant.

See table labeled "Inhibitor Application Guide" for other HPS inhibitors.



I220 Inhibitor												
CAT. NUMBER	TRADE NAME	DESC / SIZE	SERVICE TEMP.	TO BE USED ON:			BASE OIL		GRIT TYPE			COLOR
				COMP-RESSION	GROOVE / BOLTED	PAD	SYNTH. / VEG.	PETROL.	FINE CONDUCT	NON CONDUCT	NON GRIT- TED	
I4	ANDERSON INHIBOX 220	4 OZ. PLASTIC BOTTLE	-40°F to +300°F (-40°C to 149°C)	•			•				•	GRAY
I8	ANDERSON INHIBOX 220	8 OZ. PLASTIC BOTTLE	-40°F to +300°F (-40°C to 149°C)	•			•				•	GRAY
IQC	ANDERSON INHIBOX 220	1 QUART CAN	-40°F to +300°F (-40°C to 149°C)	•			•				•	GRAY

DI 10



DISTRIBUTION / TRANSMISSION / SUBSTATION JOINT COMPOUND / INHIBITOR ELECTRICAL JOINT COMPOUND

JOINT COMPOUND REQUIRED
HTJC

FARGO HI-TEMPERATURE JOINT COMPOUND (HTJC) AMOUNT REQUIRED (POUNDS PER FITTING)

CATALOG SERIES	FITTING TYPE	ALUMINUM (AH) DIE SIZE													
		74	75	76	20	24	27	30	34	36	38	40	42	44	48
10	FT Splice Body ACSR/ACSS	0.04	0.06	0.10	0.20	0.32	0.44	0.60	0.94	0.98	1.10	1.10	1.40	1.52	1.62
12 / 15	Sgl./Dbl. DE Body ACSR/ACSS	0.03	0.05	0.08	0.15	0.24	0.34	0.50	0.56	0.62	0.82	0.90	1.10	1.20	0.90
20	FT Splice Body AAC	0.04	0.06	0.08	0.09	0.14	0.20	0.33	0.42	0.54	0.60	0.72	0.85	1.20	1.32
21 / 24	Sgl./Dbl. DE Body AAC	0.03	0.04	0.05	0.06	0.07	0.11	0.16	0.22	0.26	0.28	0.38	0.47	0.56	0.70
30 / 33	15 / 10 Degree Ter- minals	0.03	0.03	0.03	0.04	0.06	0.07	0.10	0.14	0.16	0.18	0.22	0.25	0.30	0.34
40	Loop Splice AAC/ACSR/ACSS	0.04	0.05	0.06	0.08	0.10	0.13	0.20	0.26	0.30	0.35	0.40	0.54	0.68	0.79

NOTE: FARGO synthetic based, HTJC is required with ACSS conductor fittings. HTJC compound is also recommended for lowest resistance connections on standard aluminum conductor fittings.

JOINT COMPOUND REQUIRED
UJC

FARGO UNIVERSAL JOINT COMPOUND (UJC) AMOUNT REQUIRED (POUNDS PER FITTING)

CATALOG SERIES	FITTING TYPE	ALUMINUM (AH) DIE SIZE													
		74	75	76	20	24	27	30	34	36	38	40	42	44	48
10	FT Splice Body ACSR	0.04	0.06	0.10	0.20	0.32	0.44	0.60	0.94	0.98	1.10	1.10	1.40	1.52	1.62
12 / 15	Sgl./Dbl. DE Body ACSR	0.03	0.05	0.08	0.15	0.24	0.34	0.50	0.56	0.62	0.82	0.90	1.10	1.20	0.90
20	FT Splice Body AAC	0.04	0.06	0.08	0.09	0.14	0.20	0.33	0.42	0.54	0.60	0.72	0.85	1.20	1.32
21 / 24	Sgl./Dbl. DE Body AAC	0.03	0.04	0.05	0.06	0.07	0.11	0.16	0.22	0.26	0.28	0.38	0.47	0.56	0.70
30 / 33	15 / 10 Degree Ter- minals	0.03	0.03	0.03	0.04	0.06	0.07	0.10	0.14	0.16	0.18	0.22	0.25	0.30	0.34
40	Loop Splice AAC/ACSR	0.04	0.05	0.06	0.08	0.10	0.13	0.20	0.26	0.30	0.35	0.40	0.54	0.68	0.79

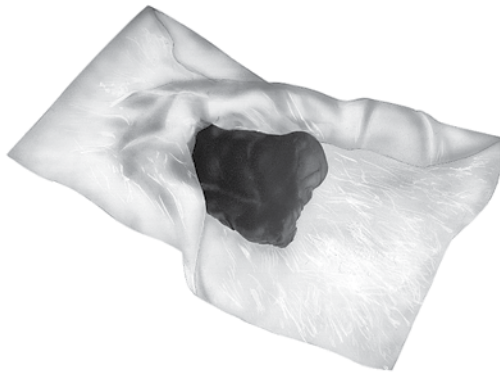
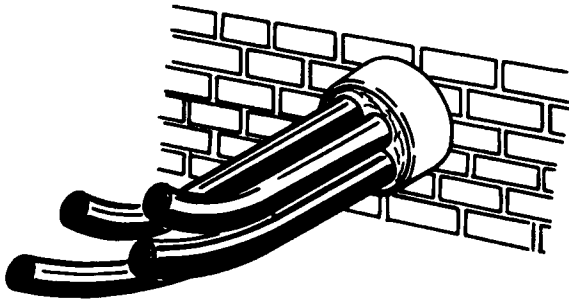
NOTE: FARGO mineral oil based, UJC is suitable for standard aluminum conductor (AAC, ACSR) fittings. See HTJC compound table which is also recommended for lowest resistance connections on standard aluminum conductor (AAC, ACSR) fittings.

DI
11



DUCT SEALING COMPOUND TYPE DSC

SEALING
DSC



- Permanently pliable, non-cracking, caulking especially formulated for sealing cable and conduit entries, around junction boxes, service masts, etc. (A “must” material when sealing vault entries.) It can be easily shaped and worked by hand and when pressed in place, will cling to metal, plastic, rubber, painted surfaces, masonry, wood, etc. It is supplied in a convenient block shape overwrapped with release paper and bagged in a clear re-entry type PVC bag with application data.
- Dielectric strength approximately 110V/mil using ASTM D149-64
- 100% non-volatile solids including non-drying synthetic polymers with inert mineral fibers
- Asbestos free, non-toxic and non-irritating
- Recommended working range when applying is 25°F to 120°F (-4°C to 49°C), tolerance range is -30°F to 175°F, (-34°C to 79°C). Will not sag at 275°F (135°C) when under such exposure for brief periods.
- Permanently pliable and non-cracking. May be painted immediately.

Ordering Information

CATALOG NUMBER	BLOCK SIZE	CARTON QUANTITY	WEIGHT EA. LBS (KG)
DSC1	1 Pound	50 Pounds	100 (45)
DSC5	5 Pounds	50 Pounds	500 (226.8)

DI
12

TAMPERPROOF EQUIPMENT LOCKS

LOCKS
GM300

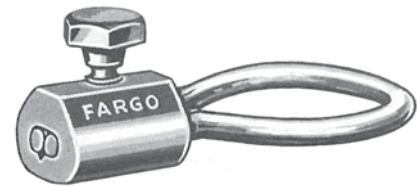
Designed for semi-permanent single-use locking of power pedestals, equipment housings, truck/trailer doors, etc.

Locks available in torque screw and pressed pin design.

Locks provide over 600 lb (272 Kg) pull strength.

Locks may be removed with bolt cutters or hacksaw.

Material: **Body** - Extruded aluminum alloy
Ring - Alumoweld®
Bolt - Aluminum - (shears @ 60 in-lb torque)
Pin - Spring Steel



GM305

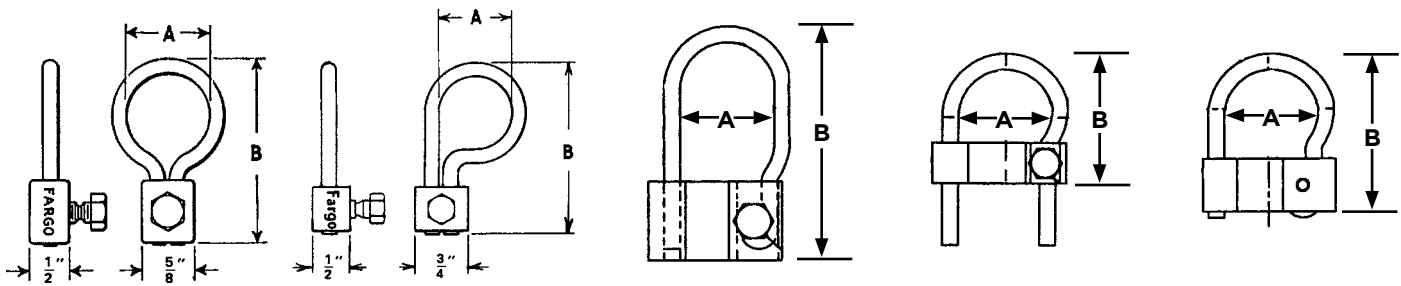


Figure 1

Figure 2

Figure 3

Figure 4

Figure 5

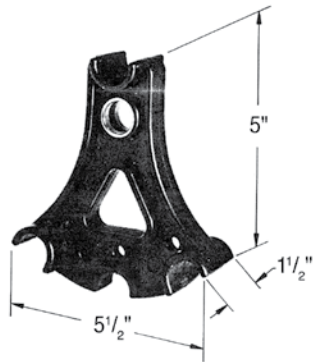
Ordering Information

CATALOG NUMBER	FIGURE NO.	A (MM)	B (MM)	C (MM)	RING WIRE SIZE (MM)	FASTENER TYPE	WT LB (KG)
GM305	1	1" (25.45)	2 1/4" (57.26)	1/2 (12.73)	#6 (.162) (4.12)	Torque Screw	.06 (.03)
GM306	1	2" (50.90)	3 1/4" (82.71)	1/2 (12.73)	#6 (.162) (4.12)	Torque Screw	.07 (.03)
GM307	2	1" (25.45)	2 1/4" (57.26)	1/2 (12.73)	#6 (.162) (4.12)	Torque Screw	.06 (.03)
GM320	3	1" (25.45)	2 1/2" (63.63)	3/4 (19.09)	#4 (.204) (5.19)	Torque Screw	.12 (.03)
GM3203	3	1" (25.45)	3 1/4" (82.71)	3/4 (19.09)	#4 (.204) (5.19)	Torque Screw	.12 (.03)
GM321	4	1" (25.45)	2 1/2" (63.63)	3/4 (19.09)	#4 (.204) (5.19)	Torque Screw	.07 (.03)
GM322	5	1" (25.45)	2 1/2" (63.63)	3/4 (19.09)	#4 (.204) (5.19)	Pressed Pin	.11 (.05)
GM3223	5	1" (25.45)	3 1/4" (82.71)	3/4 (19.09)	#4 (.204) (5.19)	Pressed Pin	.12 (.03)

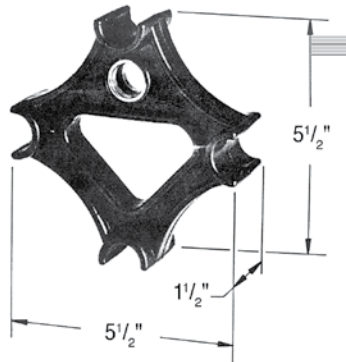


OTHER DISTRIBUTION LINE SPACERS

POLYETHYLENE
LINE SPACER



GO53



GO54

For Triplex and Quadruplex Conductors

- Provides simple and permanent spacing of secondary triplex or quadruplex conductor to ease installation of connectors or taps.
- Molded from high density polyethylene and stabilized with ultra violet inhibitors for superior long term performance.
- Wide radius conductor positions accommodate a range of triplex and quadruplex conductors. Diameter 0.75" each (both styles).
- Eyelet provides convenient attachment for service drop dead ends.

Ordering Information

CATALOG NUMBER	FIGURE NO.	NO. CONDUCTORS	DIMENSIONS INCHES (MM)			WT LB (KG)
			L	W	H	
GO53	1	3	5-1/2 (139.98)	1-1/2 (38.18)	5 (127.25)	.27 (.12)
GO54	2	4	5-1/2 (139.98)	1-1/2 (38.18)	5 1/2 (139.98)	.28 (.13)

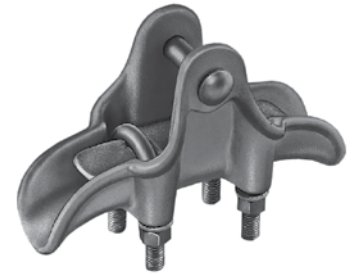
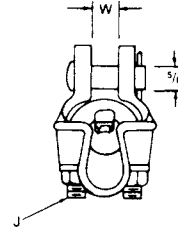
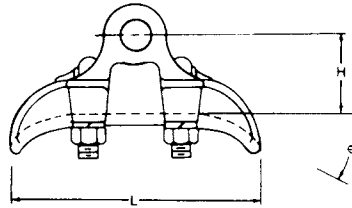
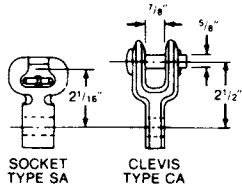
DI
14

SUSPENSION ALUMINUM CLAMP

ALUMINUM
HAS

For standard voltage application with all aluminum, ACSR, or aluminum alloy conductor.

- Material:**
- Body and Keeper** - 356-T6 aluminum alloy
 - Hardware** - Galvanized steel
 - Socket and Clevis** - Ductile iron, galvanized
 - Cotter Pin** - #302 stainless steel



Product Data & Conductor Size

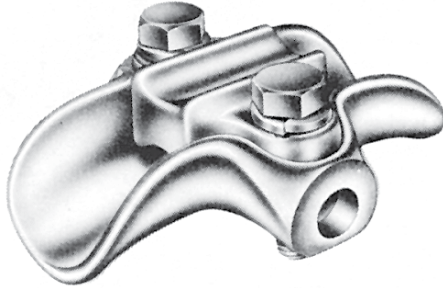
CATALOG NUMBER	FITTING		CLAMPING RANGE INCHES (MM)	ULTIMATE BODY STRENGTH LBS. (KN)	MAX. TAKE-OFF ANGLE	DIMENSIONS INCHES (MM)				APPROX. WT. EACH LBS. (KG)
	TYPE	CAT. NO.				o	L	W	H	
HAS62N	None	—	.20-.62 (5.08-15.75)	17,000 (76)	30°	6-3/4 (171.45)	29/32 (23.02)	2-9/32 (57.94)	1/2 (12.70)	1.9 (.86)
HAS62S	Socket	SA04								3.2 (1.45)
HAS62C	Clevis	CA04								3.5 (1.59)
HAS85N	None	—	.40-.85 (10.16-21.59)	18,000 (80)	30°	7-1/2 (190.50)	15/16 (23.81)	2-9/16 (65.09)	1/2 (12.70)	2.1 (.95)
HAS85S	Socket	SA06								3.4 (1.54)
HAS85C	Clevis	CA06								3.8 (1.72)
HAS104N	None	—	.50-1.04 (12.70-26.42)	25,000 (111)	30°	8-1/8 (206.38)	1-5/32 (29.37)	2-3/4 (69.85)	1/2 (12.70)	2.5 (1.13)
HAS104S	Socket	SA10								3.9 (1.77)
HAS104C	Clevis	CA101								4.2 (1.91)
HAS118N	None	—	.70-1.18 (17.78-29.97)	25,000 (111)	22.5°	8 (203.20)	1-11/32 (34.13)	2-3/4 (69.85)	1/2 (12.70)	2.8 (1.27)
HAS118S	Socket	SA10								4.2 (1.91)
HAS118C	Clevis	CA101								4.5 (2.04)
HAS139N	None	—	.90-1.39 (22.86-35.31)	25,000 (111)	22.5°	8-7/8 (225.43)	1-5/8 (41.28)	3 (76.20)	1/2 (12.70)	3.2 (1.45)
HAS139S	Socket	SA13								4.9 (2.22)
HAS139C	Clevis	CA13								5.0 (2.27)
HAS147N	None	—	1.00-1.47 (25.40-37.34)	25,000 (111)	22.5°	9-3/16 (233.36)	1-9/16 (39.69)	3-1/8 (79.38)	1/2 (12.70)	3.5 (1.59)
HAS147S	Socket	SA13								5.2 (2.36)
HAS147C	Clevis	CA13								5.3 (2.40)
HAS162N	None	—	1.10-1.62 (27.94-41.15)	25,000 (111)	22.5°	9-1/2 (241.30)	1-13/16 (46.04)	3-5/64 (78.18)	1/2 (12.70)	3.8 (1.72)
HAS162S	Socket	SA13								5.5 (2.49)
HAS162C	Clevis	CA13								5.6 (2.54)
HAS182N	None	—	1.25-1.82 (31.75-46.23)	25,000 (111)	25°	10 (254)	1-15/16 (49.21)	3-11/64 (80.57)	1/2 (12.70)	4.2 (1.91)
HAS182S	Socket	SA16								6.0 (2.72)
HAS182C	Clevis	CA16								6.2 (2.81)
HAS204N	None	—	1.40-2.04 (35.56-51.82)	25,000 (111)	20.5°	10-1/2 (266.70)	2-11/64 (55.17)	3-17/32 (89.69)	1/2 (12.70)	4.9 (2.22)
HAS204S	Socket	SA16								6.7 (3.04)
HAS204C	Clevis	CA16								6.9 (3.13)
HAS213N	None	—	1.40-2.13 (35.56-54.10)	25,000 (111)	22°	10-1/2 (266.70)	2-1/4 (57.15)	3-5/8 (92.08)	5/8 (15.88)	6.0 (2.72)
HAS213S	Socket	SA16								7.8 (3.54)
HAS213C	Clevis	CA16								8.0 (3.63)
HAS252N	None	—	2.00-2.52 (50.80-64.01)	30,000 (133)	17.5°	12 (304.80)	2-11/16 (68.26)	4-1/4 (107.95)	5/8 (15.88)	9.0 (4.08)
HAS252S	Socket	CA22		30,000 (133)						10.8 (4.90)
HAS252C	Clevis	CA22		25,000 (111)						11.3 (5.13)

NOTES: (1) Recommended torque on U-bolts: 1/2"—480 in. lbs. 5/8"—720 in. lbs.
(2) Bolt and nut may be substituted for clevis pin by adding suffix "BNK" to catalog number.



SUSPENSION TRUNNION BOLTED ALUMINUM

ALUMINUM
TSC

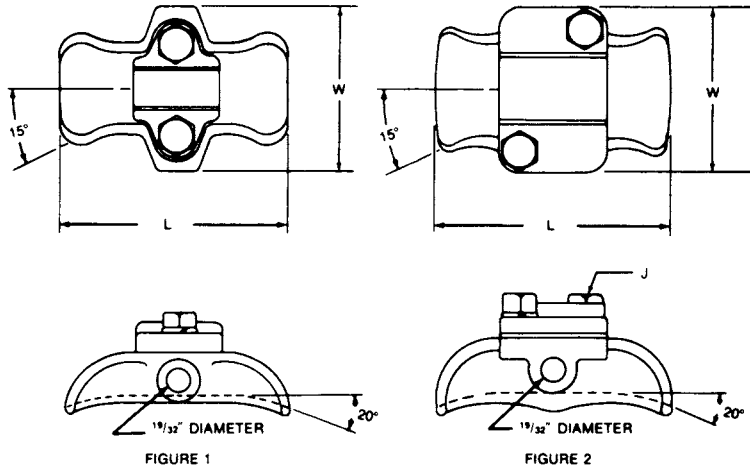


For standard voltage applications with all aluminum, ACSR or aluminum alloy conductor.

Designed for use on tangent suspension spans with horizontal or vertical post insulators.

Keeper is reversible for proper fit on different size conductors.

Material: **Body and Keeper** - Aluminum Alloy
Hardware - Galvanized Steel
Anti-Static Spring - #302 Stainless Steel



Product Data & Conductor Size

CATALOG NUMBER	FIG. NO.	CLAMPING RANGE INCHES (MM)	ULTIMATE BODY STRENGTH LBS. (KG)	DIMENSIONS INCHES (MM)			APPROX. WT. EACH LBS. (KG)
				L	W	J	
TSC57	1	.25-.57 (6.3-14.4)	2,800 (1,270)	5-1/4 (133.3)	3-7/8 (98.4)	1/2 (12.7)	.42 (.19)
TSC86	1	.35-.86 (8.8-21.8)	2,800 (1,270)	5-1/4 (133.3)	3-7/8 (98.4)	1/2 (12.7)	.45 (.20)
TSC106	1	.50-1.06 (12.7-26.9)	2,800 (1,270)	5-1/4 (133.3)	3-7/8 (98.4)	1/2 (12.7)	.62 (.28)
TSC150	1	1.00-1.50 (25.4-38.1)	2,800 (1,270)	5-1/4 (133.3)	3-7/8 (98.4)	1/2 (12.7)	.64 (.29)
TSC200	2	1.50-2.00 (38.1-50.8)	2,800 (1,270)	5-1/4 (133.3)	3-7/8 (98.4)	1/2 (12.7)	.75 (.34)

NOTES: (1) Recommended torque on bolts: 1/2"-300 in. lbs.
 (2) Anti-static spring can be supplied by adding "ARIV" to catalog number. Example, TSC57ARIV.



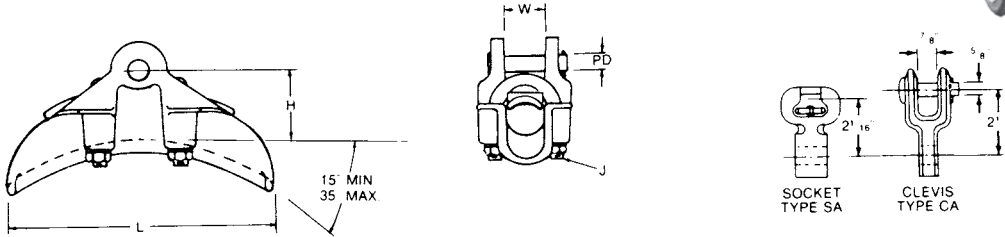
ALUMINUM ANGLE CLAMP

ALUMINUM
HAC

Designed for use on extra-high voltage transmission lines. Corona and RIV are controlled through the design of the clamp thus eliminating the need for control rings.

Type CFS (Long) is recommended for all aluminum, ACSR or aluminum alloy conductor.

- Material:**
- Body and Keeper** - 356-T6 aluminum alloy
 - Hardware** - Galvanized steel
 - Socket and Clevis** - Ductile iron, galvanized
 - Cotter Pin** - #302 Stainless steel
 - Grommet** - Neoprene



Product Data & Conductor Size

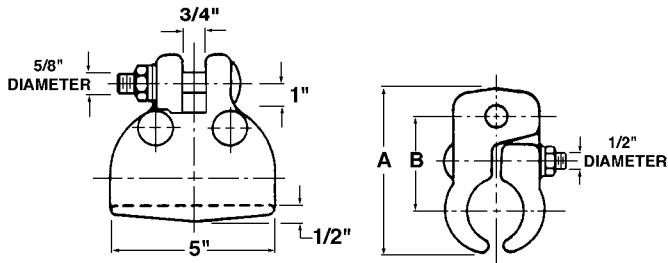
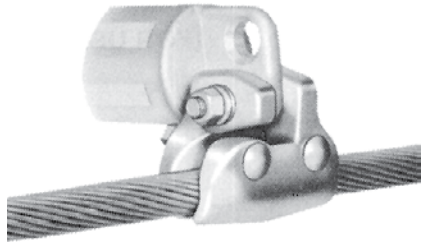
CATALOG NUMBER	FITTING		CLAMPING RANGE INCHES (MM)	ULTIMATE BODY STRENGTH LBS (KN)	DIMENSIONS INCHES (MM)					APPROX. WT. EACH LBS. (KG)
	TYPE	CAT. NO.			L	W	H	J	PD	
HAC118N	None	—		35,000 (156)						3.6 (1.63)
HAC118S	Socket	SA10	1.00-1.18 (25.40-29.97)	30,000 (133)	9-7/8 (250.83)	1-9/32 (32.54)	2-3/4 (69.85)	1/2 (12.70)	5/8 (15.88)	5.0 (2.27)
HAS118C	Clevis	CA101		25,000 (111)						5.3 (2.40)
HAC147N	None	—		35,000 (156)						4.0 (1.81)
HAC147S	Socket	SA13	1.25-1.47 (31.75-37.34)	30,000 (133)	9-3/4 (247.65)	1-11/16 (42.86)	3-1/4 (82.55)	1/2 (12.70)	5/8 (15.88)	5.7 (2.59)
HAC147C	Clevis	CA13		25,000 (111)						5.8 (2.63)
HAC182N	None	—		40,000 (178)						4.8 (2.18)
HAC182S	Socket	SA1613	1.55-1.82 (39.37-46.23)	30,000 (133)	10-1/8 (257.18)	2-1/32 (51.59)	3-1/2 (88.90)	1/2 (12.70)	3/4 (19.05)	6.6 (3.02)
HAC182C	Clevis	CA1613		25,000 (111)						6.8 (3.08)
HAC204N	None	—		40,000 (178)						5.6 (2.54)
HAC204S	Socket	SA1613	1.73-2.04 (43.94-51.82)	30,000 (133)	11-1/4 (285.75)	2-11/64 (55.17)	3-1/2 (88.90)	1/2 (12.70)	3/4 (19.05)	7.4 (3.36)
HAC204C	Clevis	CA1613		25,000 (111)						7.6 (3.45)
HAC213N	None	—		40,000 (178)						6.0 (2.72)
HAC213S	Socket	SA1613	1.81-2.13 (45.97-54.10)	30,000 (133)	11-1/4 (285.75)	2-1/4 (57.15)	3-3/4 (95.25)	5/8 (15.88)	3/4 (19.05)	7.9 (3.58)
HAC213C	Clevis	CA1613		25,000 (111)						8.0 (3.63)

NOTES: (1) Recommended torque on U-bolts; 1/2" - 480 in.-lbs; 5/8" - 720 in.-lbs.
 (2) Bolt and nut may be substituted for clevis pin by adding suffix "BNK" to catalog number.



SUSPENSION BOLTED ALUMINUM JUMPER LOOP CLAMP

ALUMINUM



For the support of jumper loops on transmission lines.

A horizontal line post with two-hole blade end fitting is bolted to the tower and attached to the jumper loop as the illustration shows. Horizontal motion of the loop is completely restricted. Because the factor of wind sway is eliminated, length of the crossarm may be reduced. Savings in tower costs can be attractive with improved construction results.

Position of the clamp relative to the insulator can be changed by bolting the clamp through the upper hole in the insulator end fitting.

Jumper loop clamps are not intended for tangent span application.

Material: Body - Aluminum alloy
Hardware - Galvanized steel

Recommended torque on bolts: 1/2" - 480 in.-lbs.; 5/8" - 720 in.-lbs.

CATALOG NUMBER	RANGE OF CONDUCTOR SIZES—INCHES (MM)	ULTIMATE STR. LBS.—(KN)	DIMENSIONS INCHES (MM)		APPROX. WT. EACH LBS. (KG)
			A	B	
976423002	1.00-1.40 (25.40-35.56)	5,000 LBS. (22)	4-1/4 (107.95)	2-3/8 (60.33)	3.3 (1.50)
976423003	1.40-1.60 (35.56-40.64)	5,000 LBS. (22)	4-1/4 (107.95)	2-3/8 (60.33)	3.3 (1.50)
600643001	1.60-2.00 (40.64-50.80)	5,000 LBS. (22)	5-1/4 (133.35)	3 (76.20)	4.1 (1.86)

ALUMINUM
AAC

SUSPENSION ALUMINUM ANGLE CLAMP

Intended for angle construction with all aluminum, ACSR or aluminum alloy conductor.

Material: Body and Keeper - 356-T6 aluminum alloy
Hardware - Galvanized steel
Cotter Pin - #302 stainless steel

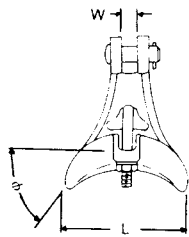
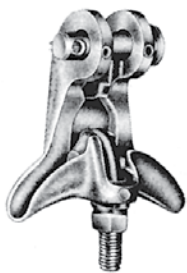
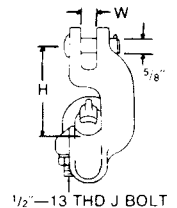
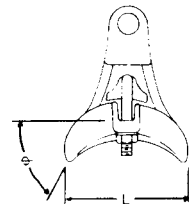
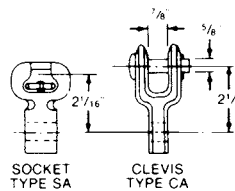
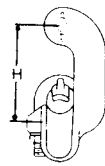


FIGURE 2



CATALOG NUMBER	FIG. NO.	CLAMPING RANGE INCHES (MM)	ULTIMATE BODY STRENGTH LBS. (KN)	MAX. TAKE-OFF ANGLE	DIMENSIONS INCHES (MM)				APPROX. WT. EACH LBS. (KG)
					o	L	W	H	
AAC301	2	.198-.732 (5.03-18.59)	7,000 (31)	45°	4-1/4 (107.95)	11/16 (17.46)	2-7/8 (73.02)	1.25 (.57)	
AAC302	1	.198-.732 (5.03-18.59)	7,000 (31)	45°	4-1/4 (107.95)	11/16 (17.46)	2-7/8 (73.02)	1.25 (.57)	
AAC104N	1	.50-1.10 (12.70-27.94)	12,000 (53)	60°	5-1/4 (133.35)	11/16 (17.46)	4-1/8 (104.77)	2.3 (1.04)	
AAC10490N	2	.50-1.10 (12.70-27.94)	12,000 (53)	60°	5-1/4 (133.35)	11/16 (17.46)	4-1/8 (104.77)	2.2 (1)	

NOTES: (1) Sockets and clevises can be supplied by adding "S" or "C" to catalog number. Example, AAC10490S.
(2) Recommended torque on 1/2" J-bolts: 300 in.-lbs.

DI
18



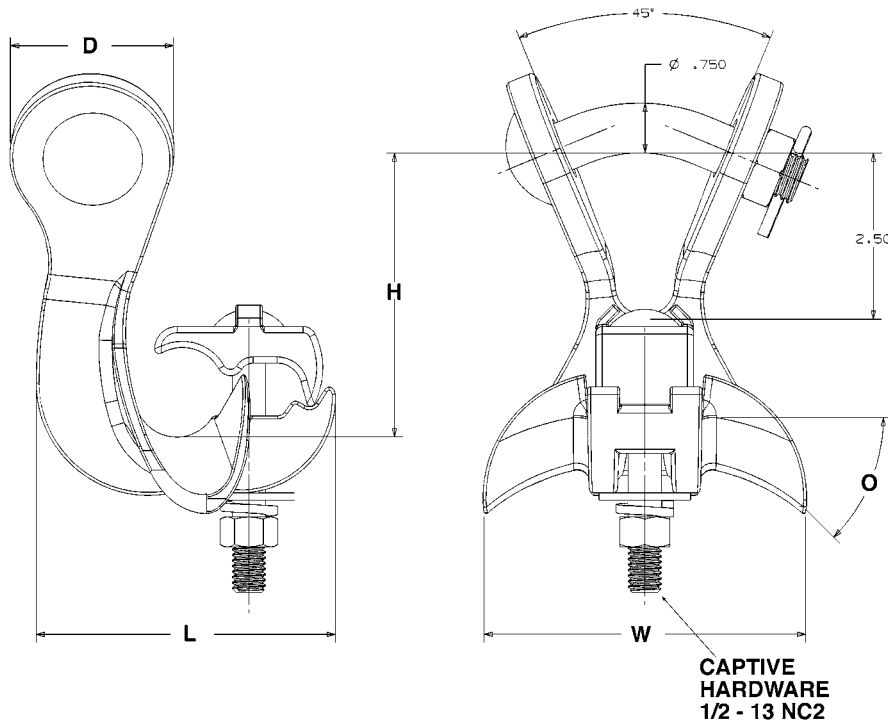
SUSPENSION ALUMINUM ANGLE CLAMP

ALUMINUM
YAAC

Intended for angle construction with all aluminum, ACSR or aluminum alloy conductor.

Built-in Y-Clevis Fitting allows compound horizontal and vertical angles necessary for residential and urban construction.

Material: **Body and Keeper** - 356 T6 Aluminum Alloy
Hardware - Galvanized Steel
Cotter Pin - #302 Stainless Steel



Product Data & Conductor Size

CATALOG NUMBER	CLAMPING RANGE INCHES (MM)	ULTIMATE BODY STRENGTH LBS. (KG)	MAX. TAKE OFF ANGLE	DIMENSIONS INCHES (MM)				APPROX. WT. EACH LBS. (KG)
			DEGREES	D	L	W	H	
YAAC125	.50-1.25 (12.70-31.75)	12,000 (5,443)	45°	2.45 (62.23)	4.50 (114.3)	4.83 (122.68)	4.27 (108.46)	2.0 (.91)

Recommended Torque on Bolt: 300 in. lbs.

DI
19



SUSPENSION BRONZE CLAMP

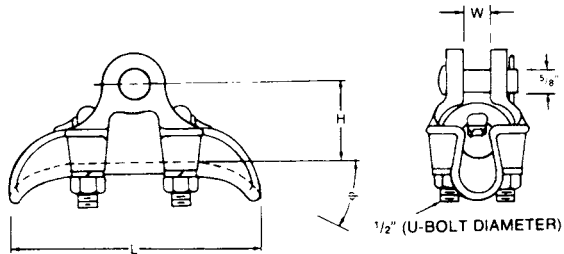
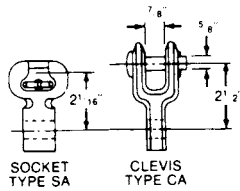
BRONZE
BRS

For use with copper or Copperweld® cable.

Through the use of these clamps hysteresis and eddy current power losses are reduced to a minimum. Liners are not required.



Material:
Body - High tensile bronze alloy
Keeper - Electrical bronze
***Hardware** - Galvanized steel
Socket and Clevis - Ductile iron, galvanized
Cotter Pin - #302 stainless steel



Product Data & Conductor Size

CATALOG NUMBER	FITTING		CLAMPING RANGE INCHES (MM)	ULTIMATE BODY STRENGTH LBS. (KN)	MAX. TAKE-OFF ANGLE	DIMENSIONS INCHES (MM)			APPROX. WT. EACH LBS. (KG)
	TYPE	CAT. NO.				L	W	H	
BRS60N	None	—	.20-.60	16,000	15°	6-1/2	3/4	2-1/4	2.9 (1.32)
BRS60S	Socket	SA04	(5.08-15.24)	(71)		(165.10)	(19.05)	(57.15)	4.4 (1.90)
BRS60C	Clevis	CA04							4.5 (2.04)
BRS83N	None	—	.40-.83	18,000	15°	7-1/4	31/32	2-3/8	3.7 (1.68)
BRS83S	Socket	SA06	(10.16-21.08)	(80)		(184.15)	(24.6)	(60.33)	5.0 (2.27)
BRS83C	Clevis	CA06							5.4 (2.45)
BRS100N	None	—	.625-1.00	22,000	15°	8	1-1/8	2-1/2	4.5 (2.04)
BRS100S	Socket	SA07	(15.88-25.40)	(98)		(203.20)	(28.58)	(63.50)	5.9 (2.68)
BRS100C	Clevis	CA101							6.3 (2.81)
BRS118N	None	—	.70-1.18	25,000	20°	8	1-9/32	2-1/2	4.9 (2.22)
BRS118S	Socket	SA11	(17.78-29.97)	(111)		(203.20)	(32.55)	(63.50)	
BRS118C	Clevis	CA101							

NOTE: Recommended torque on U-bolts; 1/2"—480 in. lbs.
 * Bronze U-bolts, nuts and washers can be furnished by adding suffix "ED" to catalog number. Example, BRS60NED.

DI
20



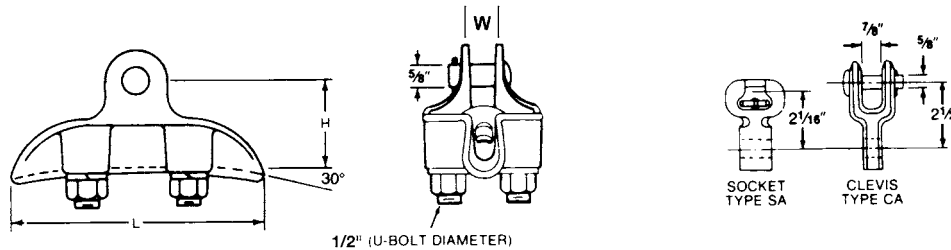
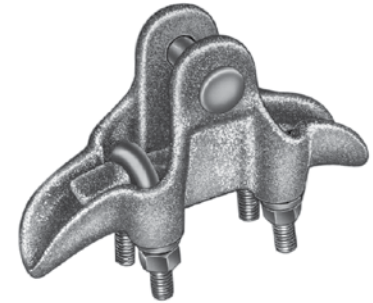
SUSPENSION DUCTILE IRON CLAMP

DUCTILE IRON
MS

For ground wire application with galvanized steel cable with or without armor rods.

Type MS may also be used to suspend copper or Copperweld® cable. Magnetic induction heating will occur.

Material: **Body and Keeper** - Ductile iron, galvanized
Hardware - Galvanized steel
Cotter Pin - #302 stainless steel



CLAMP RECOMMENDATIONS FOR GALVANIZED OVERHEAD GROUND WIRE

STEEL CABLE SIZE	BARE CONDUCTOR		FORMED ARMOR RODS	
	CLAMP CAT. NO.	DIAMETER INCHES (MM)	CLAMP CAT. NO.	DIAMETER INCHES (MM)
1/4"-7 Str.	MS46	.240 (6.10)	MS46	.412 (10.46)
5/16"-7 Str.	MS46	.312 (7.92)	MS60	.512 (13.00)
3/8"-7 Str.	MS46	.360 (9.14)	MS60	.560 (14.22)
7/16"-7 Str.	MS46	.435 (11.05)	MS82	.673 (17.09)
1/2"-7 Str.	MS60	.495 (12.57)	MS82	.771 (19.58)
5/8"-7 Str.	MS70	.621 (15.77)	—	—

Product Data & Conductor Size

CATALOG NUMBER	FITTING		CLAMPING RANGE INCHES (MM)	ULTIMATE BODY STRENGTH LBS. (KN)	DIMENSIONS INCHES (MM)			APPROX. WT. EACH LBS. (KG)
	TYPE	CAT. NO.			L	H	W	
MS46N	None	—	.20-.46	16,000	5-5/8	2	7/8	2.15 (.98)
MS46S	Socket	SA04	(5.08-11.68)	(71)	(142.88)	(50.8)	(22.2)	3.4 (1.54)
MS46C	Clevis	CA04						3.8 (1.73)
MS60N	None	—	.20-.60	16,000	6-7/16	2	7/8	2.65 (1.20)
MS60S	Socket	SA04	(5.08-15.24)	(71)	(163.51)	(50.8)	(22.2)	3.9 (1.77)
MS60C	Clevis	CA04						4.3 (1.95)
MS70N	None	—	.30-.70	18,000	6-3/8	2	15/16	2.90 (1.32)
MS70S	Socket	SA05	(7.62-17.78)	(80)	(161.93)	(50.8)	(23.8)	4.2 (1.91)
MS70C	Clevis	CA05						4.6 (2.09)
MS82N	None	—	.40-.82	18,000	7-1/2	2-3/8	15/16	3.25 (1.47)
MS82S	Socket	SA06	(10.16-20.83)	(80)	(190.50)	(60.33)	(23.8)	4.7 (2.13)
MS82C	Clevis	CA06						5.0 (2.27)
MS104N	None	—	.50-1.04	25,000	8	2-3/4	1-1/8	5.70 (2.59)
MS104S	Socket	SA07	(12.70-26.42)	(111)	(203.2)	(69.9)	(28.6)	7.1 (3.22)
MS104C	Clevis	CA06						7.4 (3.36)

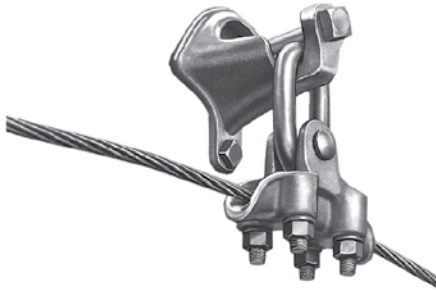
NOTE: Recommended torque on U-bolts; 1/2"—480 in. lbs.

* Bronze U-bolts, nuts and washers can be furnished by adding suffix "ED" to catalog number. Example, BRS60NED.



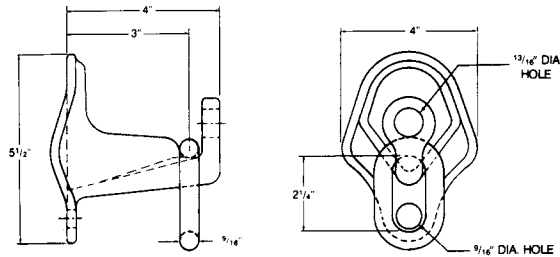
SUSPENSION DUCTILE IRON GROUND WIRE SUPPORT BRACKET

DUCTILE IRON
GWB1S



Designed to be used with most types of suspension clamps (aluminum or ferrous). May be mounted with through bolt and lag screw.

Material: Body, Keeper, and Eyebolt - Bronze Alloy
Eystem - Bronze Alloy, Forged



Product Data & Conductor Size

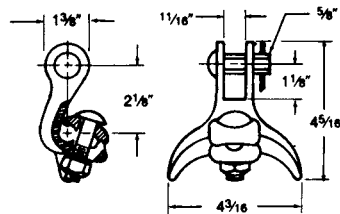
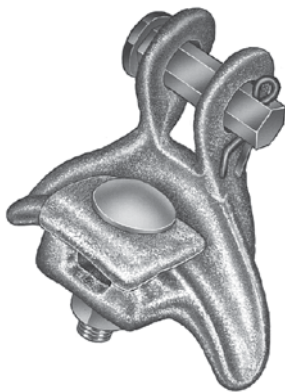
CATALOG NUMBER	MOUNTING HARDWARE MAX. DIA. INCHES (MM)		MOUNTING BOLT SPACING INCHES (MM)	ULTIMATE STRENGTH VERTICAL LBS. (KN)	APPROX. WT. EACH LBS. (KG)
	BOLT	LAG SCREWS			
GWB1S	3/4 (19.05)	1/2 (12.70)	3-5/16 (84.14)	5,000 (22)	2.6 (1.18)

SUSPENSION DUCTILE IRON ANGLE CLAMP

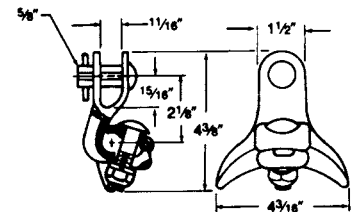
DUCTILE IRON

Intended for use in angle construction with galvanized steel overhead ground wire or copper and Copperweld® phase wire. Magnetic induction heating will occur.

Material: Body and Keeper—ductile iron, galvanized
Hardware—hot dip galvanized steel
Cotter Pin—#302 stainless steel
Grommet—neoprene



Catalog Number 82860



Catalog Number 81460

Product Data & Conductor Size

CATALOG NUMBER	CLAMPING RANGE INCHES (MM)		ULTIMATE BODY STRENGTH LBS. (KN)	MAX. TAKE-OFF ANGLE	APPROX. WT. EACH LBS. (KG)
	SMALL GROOVE	LARGE GROOVE		0	
814602000	.162-.25	.25-.60	7,000	0	1.5
828602000	(4.11-6.35)	(6.35-15.24)	(31)	60°	(.68)

NOTE: Recommended torque on 1/2" bolt—480 in. lbs.

DI
22



SUSPENSION DUCTILE IRON TRUNNION SUSPENSION CLAMP

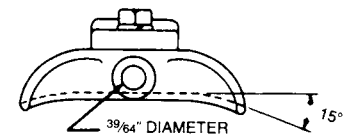
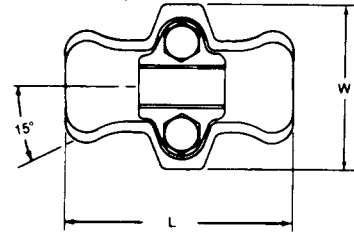
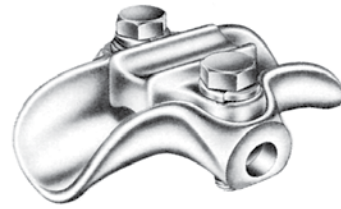
For ground wire applications with galvanized steel cable.

DUCTILE IRON

Designed for use on tangent suspension spans with horizontal or vertical post insulators.

Keeper is reversible for proper fit on different size conductors.

Material: **Body and Keeper** - Ductile iron, galvanized
Hardware - Galvanized steel
Anti-static spring - #302 stainless steel (See Note 2)



Product Data & Conductor Size

CATALOG NUMBER	CLAMPING RANGE INCHES (MM)	ULTIMATE BODY STRENGTH LBS. (KN)	DIMENSIONS INCHES (MM)			APPROX. WT. EACH LBS. (KG)
			L	W	J	
2706503001	.25-.56 (6.13-14.2)	2,800 (12)	5-1/4 (133.3)	3-7/8 (98.4)	1/2 (12.7)	2.50 (1.13)
2706513001	.50-1.06 (12.7-26.9)	2,800 (12)	5-1/4 (133.3)	3-7/8 (98.4)	1/2 (12.7)	2.75 (1.24)
2706523001	1.06-1.50 (26.9-38.1)	2,800 (12)	5-1/4 (133.3)	3-7/8 (98.4)	1/2 (12.7)	3.00 (1.36)

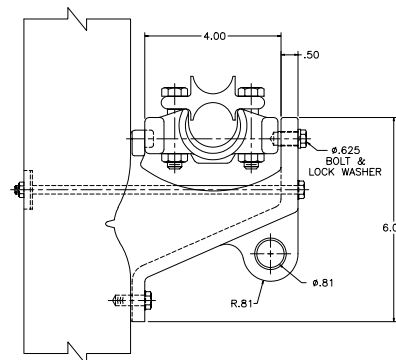
NOTES: (1) Recommended torque on bolts; 1/2"—480 in. lbs.
 (2) Anti-static spring can be supplied by adding "ARIV" to catalog number. Example, TSCHT150ARIV.

SUSPENSION DUCTILE IRON GROUND WIRE SUPPORT BRACKET

Designed to accommodate most (aluminum or ferrous) trunnion type clamps. May be mounted with one bolt and lag screw or two bolts.

**DUCTILE IRON
GWB1R**

Material: Ductile iron, galvanized



Product Data & Conductor Size

CATALOG NUMBER	MOUNTING HARDWARE MAX. DIA. INCHES (MM)		MOUNTING BOLT SPACING INCHES (MM)	ULTIMATE STRENGTH VERTICAL LBS. (KN)	APPROX. WT. EACH LBS. (KG)
	BOLT	LAG SCREW			
GWB1R	5/8 (15.88)	1/2 (12.70)	3-1/4 (82.55)	5,000 (22)	3.1 (1.40)

NOTE: Mounting hardware by others.

T2 CLAMPS



T2 is the designation for a type of conductor developed in the mid-1960's by Kaiser Aluminum Company. The "T" is for twisted and the "2" indicates two wires twisted together. T2 is actually two regular round conductors of any type (ACSR, AAC, ACAR, AAAC, etc.) twisted around each other at 9-foot intervals. The main purpose of the twisted design is to prevent galloping by constantly varying the cable diameter face. This wind-induced galloping phenomena occurs primarily in the Midwestern U.S.

Some utilities prefer suspension and strain clamps with "double groove" clamping, while others find that single-groove standard clamps, properly sized and tested, perform adequately on T2.








Anderson offers both single and double groove clamps. In the early days of T2, filler rods were used and designed for round conductor. After years of field service and testing, Anderson feels filler rods are no longer necessary and we do not recommend them.

Another clamp approach is to separate the two round conductors at the clamping point and use two separate single-groove clamps attached to a small yoke plate.

Anderson can supply your T2 clamp needs regardless of your construction preference.

STRAIN CLAMPS

RECOMMENDED APPLICATION CHART OF ANDERSON ALUMINUM CLAMPS FOR T-2 CONDUCTOR

		CONDUCTOR DATA			RECOMMENDED CLAMPS						
		CONDUCTOR SIZE (QTY.) AWG	DUAL CONDUCTOR OUTSIDE DIMENSIONS INCHES	T2 CONDUCTOR ULTIMATE STRENGTH LBS							
T-2 IRIS	(2) 2-7 STR. AAC.	.292 x .584	2532	ADE60	ADS60	ADE60	ADS60	ADE60	ADS60	PG70	SD70
T-2 SPARROW	(2) 2-6/1 ACSR	.316 x .682	5580	ADE70	ADS88	ADE70	ADS88	ADEZ88	ADEZ88	PG70	SD70
T-2 RAVEN	(2) 1/0-6/1 ACSR	.398 x .796	8560	ADE86	AR2025	ADE86	AR2025	ADEZ88	ADEZ88	PG86L	SD86
T-2 GUAIL	(2) 2/0-6/1 ACSR	.447 x .894	10,690	ADE98	AR2025	ADE98	AR2025	ADEZ116	ADEZ116	PG100L	SD86
T-2 PIGEON	(2) 3/0-6/1 ACSR	.502 x 1.004	13,350	SDT2112	AR2025	SDT2112	AR2025	ADEZ116	ADEZ116	PG100L	SD86
T-2 PENQUIN	(2) 4/0-6/1 ACSR	.562 x 1.126	16,840	SDT2112	AR2025	SDT2112	AR2025	ADEZ116	ADEZ116	PG130	SD112
T-2 PARTRIDGE	(2) 266.8-26/7 ACSR	.642 x 1.284	22,500	SDT2185	AR2050	SDT2185	AR2050	ADE155	ADS130T2	PG130	SD112
T-2 LINNET	(2) 336.4-26/7 ACSR	.721 x 1.442	28,100	SDT2185	AR2050	SDT2185	AR2050	ADE155	ADS130T2	PG130	SD130
T-2 CHICKADEE	(2) 397.5-18/1 ACSR	.743 x 1.486	20,080	SDT2185	AR2050	SDT2185	AR2050	ADE155	ADS130T2	PG130	SD155
T-2 IBIS	(2) 397.5-26/7 ACSR	.783 x 1.566	32,380	SDT2185	AR2050	SDT2185	AR2050	ADE155	ADS130T2	PG130	SD185
T-2 PELICAN	(2) 477.0-18/1 ACSR	.814 x 1.628	23,740	SDT2185	AR2100	SDT2185	AR2100	ADE155	ADS130T2	PG130	SD185
T-2 MISTLETOE	(2) 556.5-37 STR. AAC	.858 x 1.716	19,660	SDT2185	AR2100	SDT2185	AR2100	ADE155	ADS130T2	PG130	SD185
T-2 HAWK	(2) 477.0-26/7 ACSR	.858 x 1.716	38,860	SDT2185	AR2100	SDT2185	AR2100	ADE155	ADS130T2	PG130	SD185 (1)
T-2 OSPREY	(2) 556.5-18/1 ACSR	.879 x 1.758	27,700	SDT2185	AR2100	SDT2185	AR2100	ADE155	ADS130T2	PG130	SD185
T-2 HEN	(2) 447.0-30/7 ACSR	.883 x 1.766	46,600	AR2100	AR2100	AR2100	AR2100	ADE155	ADS130T2	PG130	SD185
T-2 DOVE	(2) 556.5-26/7 ACSR	.927 x 1.854	44,800	AR2100	AR2100	AR2100	AR2100	ADE155	ADS130T2	PG130	SD185
T-2 GROSBEAK	(2) 636.0-26/7 ACSR	.990 x 1.980	50,000	AR2100	AR2100	AR2100	AR2100	ADE155	ADS130T2	PG130	SD185
T-2 TERN	(2) 795.0-45/7 ACSR	1.063 x 2.126	45,800	AR2100	AR2100	AR2100	AR2100	ADE155	ADS130T2	PG130	SD185
T-2 RAIL	(2) 954.0-45/7 ACSR	1.165 x 2.330	53,800	AR2150	AR2150	AR2150	AR2150	ADE155	ADS130T2	PG130	SD185
T-2 BLUEJAY	(2) 1113.0-45/7 ACSR	1.259 x 2.518	61,800	AR2150	AR2150	AR2150	AR2150	ADE155	ADS130T2	PG130	SD185

(1) RECOMMENDATION BASED ON 556.5-18/1 TEST VALUES IN LIEU OF 556.5-37 STR. AAC.
 (2) RECOMMENDATION FOR LOW TENSION APPLICATION, REFER TO CATALOG FOR CLAMP ULTIMATE STRENGTH RATING.

SUSPENSION AND STIRRUP CLAMPS



RECOMMENDED APPLICATION CHART OF ANDERSON ALUMINUM CLAMPS FOR T-2 CONDUCTOR

CONDUCTOR DATA		RECOMMENDED CLAMPS								
CODE WORD	CONDUCTOR SIZE (QTY.) AWG	DUAL CONDUCTOR OUTSIDE DIMENSIONS INCHES	T2 CONDUCTOR ULTIMATE STRENGTH LBS	ALUMINUM SUSPENSION CLAMP DOUBLE GROOVE KEEPER	345 KV CORONA FREE ALUMINUM SUSPENSION CLAMP DOUBLE GROOVE	ALUMINUM TRUNION SUSPENSION CLAMP DOUBLE GROOVE KEEPER	DUCTILE IRON TRUNION SUSPENSION CLAMP WITH ALUMINUM DOUBLE GROOVE KEEPER	ALUMINUM SUSPENSION CLAMP SINGLE GROOVE	ALUMINUM TRUNION SUSPENSION CLAMP SINGLE GROOVE	ALUMINUM MECHANICAL STIRRUP SINGLE GROOVE
T-2 IRIS	(2) 2-7STR. AAC.	.292 x .584	2532					HAS85	TSC57 (1)	AHLS024019E
T-2 SPARROW	(2) 2-6/1 ACSR	.316 x .682	5580	TSCT2150	TSCT2150	TSCDT2150	TSCDT2150	HAS85	TSC86 (2)	AHLS024019E
T-2 RAVEN	(2) 1/0-6/1 ACSR	.398 x .796	8560	HAST2118	HAST2118	TSCT2150	TSCDT2150	HAS104	TSC86 (1)	AHLS397021E
T-2 QUAIL	(2) 2/0-6/1 ACSR	.447 x .894	10,690	HAST2118	HAST2118	TSCT2150	TSCDT2150	HAS104	TSC106T2(1)	AHLS397021E
T-2 PIGEON	(2) 3/0-6/1 ACSR	.502 x 1.004	13,350	HAST2118	HAST2118	TSCT2150	TSCDT2150	HAS118	TSC150T2(2)	AHLS954022E
T-2 PENQUIN	(2) 4/0-6/1 ACSR	.562 x 1.126	16,840	HAST2139	HAST2139	TSCT2150	TSCDT2150	HAS139	TSC150-T2(1)	AHLS954022E
T-2 PARTRIDGE	(2) 266.8-26/7 ACSR	.642 x 1.284	22,500	HAST2139	HAST2139	TSCT2200	TSCDT2200	HAS139	TSC150-T2(1)	
T-2 LINNET	(2) 336.4-26/7 ACSR	.721 x 1.442	28,100	HAST2182	HAST2182	TSCT2200	TSCDT2200	HAS162	TSC150-T2(1)	
T-2 CHICKADEE	(2) 397.5-18/1 ACSR	.743 x 1.486	20,080	HAST2182	HAST2182	TSCT2200	TSCDT2200	HAS182		
T-2 IBIS	(2) 397.5-26/7 ACSR	.783 x 1.566	32,380	HAST2182	HAST2182	TSCT2200	TSCDT2200	HAS182		
T-2 PELICAN	(2) 477.0-18/1 ACSR	.814 x 1.628	23,740	HAST2182	HAST2182	TSCT2200	TSCDT2200	HAS182		
T-2 MISTLETOE	(2) 556.5-37 STR. AAC	.858 x 1.716	19,660	HAST2204	HAST2204	TSCT2200	TSCDT2200	HAS204		
T-2 HAWK	(2) 477.0-26/7 ACSR	.858 x 1.716	38,860	HAST2204	HAST2204	TSCT2200	TSCDT2200	HAS204		
T-2 OSPREY	(2) 556.5-18/1 ACSR	.879 x 1.758	27,700	HAST2204	HAST2204	TSCT2200	TSCDT2200	HAS204		
T-2 HEN	(2) 447.0-30/7 ACSR	.883 x 1.766	46,600	HAST2204	HAST2204	TSCT2200	TSCDT2200	HAS204		
T-2 PARAKEET	(2) 556.5-18/1 ACSR	.914 x 1.828	39,700	HAST2204	HAST2204					
T-2 ARBUTUS	(2) 795-37 STR. AAC	1.026 x 2.052	27,540	HAST2252	HAST2252					
T-2 DOVE	(2) 556.5-26/7 ACSR	.927 x 1.854	44,800	HAST2204	HAST2204			HAS204		
T-2 ROOK	(2) 636.0-24/7 ACSR	.977 x 1.954	45,200	HAST2252	HAST2252					
T-2 GROSBEAK	(2) 636.0-26/7 ACSR	.990 x 1.980	50,000	HAST2252	HAST2252			HAS227		
T-2 TERN	(2) 795.0-45/7 ACSR	1.063 x 2.126	45,800	HAST2252	HAST2252			HAS252T2		
T-2 RAIL	(2) 954.0-45/7 ACSR	1.165 x 2.330	53,800	HAST2252	HAST2252			HAS252T2		
T-2 BLUEJAY	(2) 1113.0-45/7 ACSR	1.259 x 2.518	61,800					HAS280		

(1) ON CATALOG TYPE TSC USE LARGE SIDE OF KEEPER ON CABLE SPECIFIED.
 (2) ON CATALOG TYPE TSC USE SMALL SIDE OF KEEPER ON CABLE SPECIFIED.



SUSPENSION ALUMINUM/DUCTILE IRON DOUBLE GROOVE TRUNNION SUSPENSION CLAMP

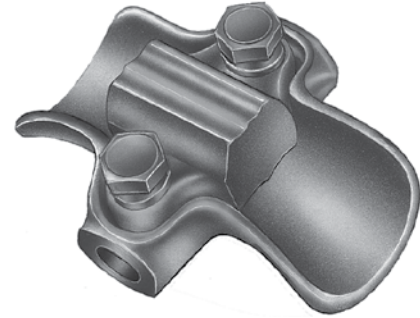
ALUMINUM/DUCTILE
TSCT2/TSCDT2

For standard voltage applications with all aluminum, ACSR, or aluminum alloy T2 conductor.

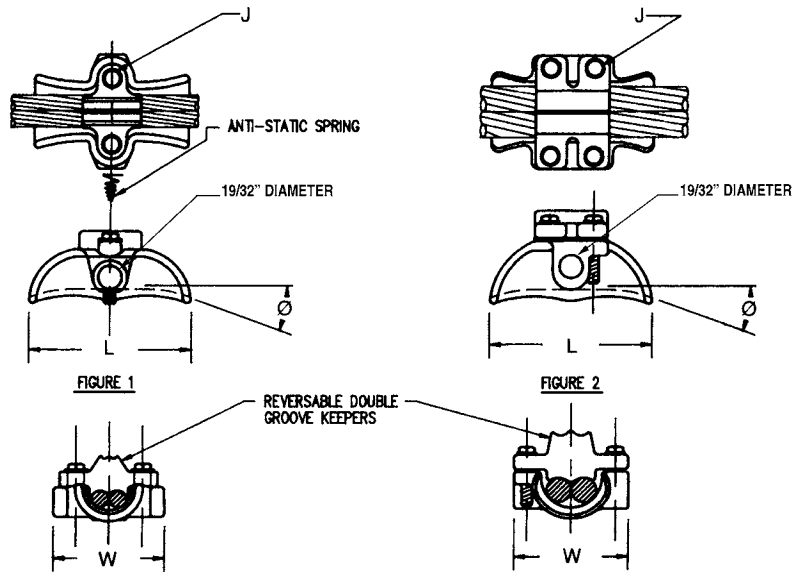
Designed with double groove keeper for use on tangent suspension spans with horizontal or vertical post insulators.

Keeper is reversible for proper fit on different size conductors.

Material: **TSCT2:** Body and Keeper - 356-T6 aluminum alloy
TSCDT2: Body - Ductile iron - Galvanized
 Keeper - 356-T6 aluminum alloy
 Hardware - Galvanized steel
 Anti-static spring - #302 stainless steel



Note: Anti-static springs can be supplied by adding "ARIV" to catalog number.



Product Data & Conductor Size

CATALOG NUMBER	FIG. NO.	CLAMPING RANGE INCHES (MM)	ULTIMATE BODY STRENGTH LBS. (KN)	MAX. TAKE-OFF ANGLE °	DIMENSIONS INCHES (MM)			APPROX. WT. EACH LBS. (KG)
					L	W	J	
TSCT2150	1	.316-.563 (8.03-14.3)	2,800 (12)	20°	5-1/4 (133.3)	3-7/8 (98.4)	1/2 (12.7)	1.14 (.52)
TSCT2200	2	.642-.927 (16.31-23.54)	2,800 (12)	20°	5-1/4 (133.3)	3-7/8 (98.4)	1/2 (12.7)	1.75 (.79)
TSCDT2150	1	.316-.563 (8.03-14.3)	2,800 (12)	15°	5-1/4 (133.3)	3-7/8 (98.4)	1/2 (12.7)	2.50 (1.13)
TSCDT2200	2	.642-.927 (16.31-23.54)	2,800 (12)	20°	5-1/4 (133.3)	3-7/8 (98.4)	1/2 (12.7)	2.94 (1.33)

NOTE: Recommended torque on 1/2" clamping bolts: 300 in.-lbs.

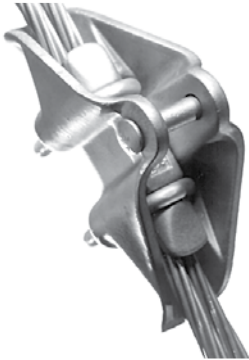


SUSPENSION DOUBLE GROOVE ALUMINUM CLAMP

ALUMINUM
HAST2

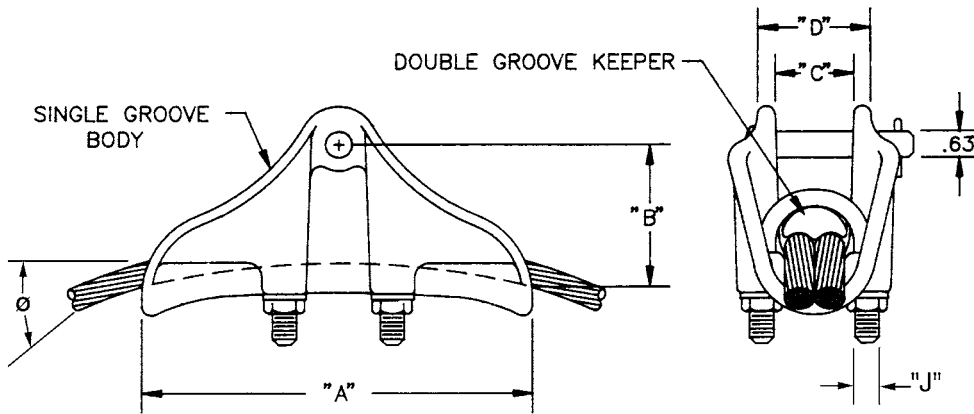
Made with double groove keeper to accommodate twin conductor.

For standard voltage application with all aluminum, ASCR, or aluminum alloy conductor.



Material: **Body and Keeper** - 356-T6 aluminum alloy, heat treated.
Sockets and clevises - 654512 ductile iron, hot dipped galvanized.
Hardware - Galvanized steel
Cotter pins - Stainless steel

Note: Clamp may be furnished with 5/8"-11 galvanized steel bolt and nut with #302 stainless steel cotter pin by adding "BNK" suffix to catalog number.
 Example: HAST2118SBNK



Product Data & Conductor Size

CATALOG NUMBER	FITTING		CLAMPING RANGE			DIMENSIONS INCHES						ULTIMATE BODY STRENGTH LBS. (KN)	APPROX. WEIGHT LBS. (KG)
	TYPE	CAT. NO.	ACSR	INCHES	ALUMINUM	A	B	C	D	Ø	J		
HAST2118S	SOCKET	SA10	1/0	.398	2/0-7 STR.							25,000 (111)	4.40 (2.00)
HAST2118C	CLEVIS	CA101	TO	TO	TO	8.00	2.75	1.41	2.41	22.5	1/2		4.50 (2.04)
HAST2118N	NONE	...	3/0	.502	3/0-19 STR.								2.80 (1.27)
HAST2139S	SOCKET	SA13	134-12/7	.522	4/0-7 STR.							25,000 (111)	4.90 (2.22)
HAST2139C	CLEVIS	CA13	TO	TO	TO	8.88	3.00	1.63	2.56	22.5	1/2		5.00 (2.27)
HAST2139N	NONE	...	266.8-26/7	.642	300-61 STR.								3.30 (1.50)
HAST2182S	SOCKET	SA16	336-18/1	.684	350-37 STR.							25,000 (111)	6.00 (2.72)
HAST2182C	CLEVIS	CA16	TO	TO	TO	10.00	3.25	2.06	3.00	25.0	1/2		6.10 (2.77)
HAST2182N	NONE	...	477-18/1	.814	500-37 STR.								4.30 (1.95)
HAST2204S	SOCKET	SA16	477-26/7	.858	556-37 STR.							25,000 (111)	6.60 (3.00)
HAST2204C	CLEVIS	CA16	TO	TO	TO	10.50	3.53	2.17	3.13	20.5	1/2		6.70 (3.03)
HAST2204N	NONE	...	556.5-26/7	.927	636-37 STR.								4.90 (2.22)
HAST2252S	SOCKET	SA22										30,000 (133)	11.80 (5.35)
HAST2252C	CLEVIS	CA22	636-24/7	.977	750-61 STR. TO	12.00	4.25	2.68	3.81	17.5	5/8	25,000 (111)	12.30 (5.58)
HAST2252N	NONE	...	954-45/7	1.165	1,000-61 STR.							30,000 (133)	10.00 (4.54)

Notes: (1) Recommended torque on U-bolts; 1/2" - 480 in - lbs., 5/8" - 720 in - lbs.
 (2) Bolt and nut may be substituted for clevis pin by adding suffix "BNK" to catalog number.

DI
28