

FEBRUARY 2016

3RD EDITION



Presented By

**GARMIN.**



LEGENDARY RELIABILITY  
SALES EVENT



TXTT KICKS OFF AT  
LAKE SAM  
RAYBURN



ALL NEW  
T/C COMPASS



Presented By  
**GARMIN**

# A NOTE FROM THE EDITOR

HELLO EVERYONE!

THANKS FOR CHECKING OUT THIS MONTH'S AMERICANA OUTDOORS® E-MAGAZINE. ONCE AGAIN THE AMERICANA OUTDOORS® TEAM HAS BEEN HARD AT WORK ACROSS THE NATION THIS MONTH IN A TRANSITION FROM DEER HUNTING INTO BASS FISHING AND TURKEY HUNTING, WHICH IS JUST RIGHT AROUND THE CORNER! WADE HAS BEEN FISHING ACROSS TEXAS, CLARK JUST COMPETED IN THE FIRST WALMART FLW TOUR EVENT OF THE YEAR ON THE WORLD FAMOUS LAKE OKEECHOBEE, JEFF RECENTLY COMPETED IN THE FIRST TEXAS TEAM TRAIL EVENT OF THE YEAR ON LAKE SAM RAYBURN, WHERE I WAS ABLE TO MEET UP WITH HIM AND FISH AN HOUR EAST ON TOLEDO BEND RESERVOIR. BE SURE TO STAY TUNED AND WATCH FOR ALL OF OUR OUTDOOR ADVENTURES ON TELEVISION OR THE WEB! THOUGH THE AMERICANA OUTDOORS® STAFF HAS BEEN BUSY THROUGHOUT THE TRANSITION OF SEASONS, WE STILL HAVE BEEN ABLE TO PUT TOGETHER A GREAT SELECTION OF THE LATEST HUNTING AND FISHING NEWS, VIDEOS, TIPS, AND GEAR THROUGHOUT THE THIRD EDITION OF THE AMERICANA OUTDOORS® E-MAGAZINE.

THROUGHOUT THIS ISSUE, WE'LL CHECK OUTS SOME WINTERTIME BASS TACTICS FROM THE AMERICANA OUTDOORS® TEAM, TAKE A LOOK THE RANGER CUP UNIVERSITY CHALLENGE FROM BIENVILLE PLANTATION, AND MEET GARMIN'S NEWEST MARINE PROSTAFF MEMBERS.

ENJOY THE SECOND EDITION OF THE AMERICANA OUTDOORS® E-MAGAZINE AND AS ALWAYS, GOOD LUCK TO EVERYONE IN THE FIELD AND ON THE WATER!

CODY LEVY  
AMERICANA OUTDOORS® STAFF



- 6** YAMAHA'S TIPS FOR BOATING SEASON
- 8** FISHING VENICE IN THE RANGER 1962 MPV
- 10** THE ENGEL LIVE BAIT COOLER
- 11** OUTDOOR ACTION LIVE ON ROKU
- 12** THE ALL NEW T/C COMPASS
- 14** TXTT KICKS OFF ON SAM RAYBURN
- 16** THE NEW GARMIN QUATIX
- 18** WINTERTIME BASS TACTICS
- 23** SAWYER PERMETHRIN INSECT REPELLENT
- 25** HiVIZ' NEW LIGHTWAVE FOR COMPSIGHT
- 26** HOBIE NAMES TOP GUN FISHING TEAM
- 28** STEALTH CAM UNVEILS G45NG PRO
- 29** GARMIN'S 2016 PRO TEAM
- 30** THE CABELA'S CREDENCE IN USE
- 31** SMITH & WESSON INTRODUCES M&P 15-22 SPORT
- 32** COOK WITH CABELA'S
- 35** BOATUS SAFETY TIPS
- 36** YAMAHA'S NHFD SWEEPSTAKES

## ON THE COVER



AMERICANA OUTDOORS STAFF MEMBER, CODY LEVY WITH A GIANT FLORIDA BASS!





**AMERICANA  
OUTDOORS**  
Presented by  
**GARMIN.**

# MEET THE AMERICANA OUTDOORS STAFF



**WADE MIDDLETON**



**CLARK WENDLANDT**



**JEFF REYNOLDS**



**CODY LEVY**

Click on the link above for a complete bio from each of the staff!



Brought to you by

**GARMIN**

**FIND AMERICANA OUTDOORS ONLINE AT:**



Presented By

**GARMIN**

[WWW.AMERICANAOUTDOORS.COM](http://WWW.AMERICANAOUTDOORS.COM)

**AMERICANA OUTDOORS**



**@AMERICANA\_OUTDOORS**

**@LIVE\_AMERICANA**



**AMERICANAOUTDOORS1**



[WWW.CARECOTV.COM](http://WWW.CARECOTV.COM)



# MAINTENANCE MATTERS<sup>®</sup>

A SIMPLE GUIDE FOR THE LONGEVITY OF YOUR OUTBOARD

## *BOATING SEASON IS HERE! ARE YOU PREPARED?*

FROM THEIR PAINSTAKING DESIGN TO THEIR METICULOUS CONSTRUCTION, YAMAHA OUTBOARDS ARE MANUFACTURED TO PROVIDE YOU WITH YEARS OF ENJOYMENT. HOWEVER, THEY LIVE IN ONE OF THE HARSHTEST ENVIRONMENTS IMAGINABLE. HIGH LOAD, HIGH-RPM OPERATION, EXTREME TEMPERATURES AND HUMIDITY, SALTWATER, SUN, EVEN LONG PERIODS OF NON-USE CAN ALL EXACT A HEAVY TOLL. AND IT'S NOT JUST YAMAHA OUTBOARDS. ALL OUTBOARDS FACE THESE SAME CHALLENGES. REGULAR MAINTENANCE IS IMPORTANT IN HELPING YOUR OUTBOARD MEET THE DEMANDS OF THESE CHALLENGING ENVIRONMENTS, AND ONLY YOU CAN MAKE SURE IT HAPPENS.

SPENDING A RELATIVELY SMALL AMOUNT OF TIME MAKING SURE YOUR OUTBOARD'S IN PROPER CONDITION IS SIMPLE TO DO, AND:

YOU'LL HAVE MORE HOURS OF TROUBLE-FREE ENJOYMENT ON THE WATER.

YOU'LL PRESERVE YOUR INVESTMENT WITH A HIGHER RESALE VALUE.

YOUR BOAT WILL BE READY WHEN YOU ARE.

IT'S EASIER AND COSTS LESS TO MAINTAIN THAN REPAIR.

YAMAHA DEALERS STAND READY TO HELP.

WHAT ARE THE BASICS? KEEP YOUR OUTBOARD READY TO RUN WITH BASIC MAINTENANCE LIKE:

CHANGING ENGINE AND LOWER UNIT OILS EVERY 100 HOURS

FLUSHING REGULARLY

REPLACING FUEL FILTERS PERIODICALLY

HELPING TO PREVENT CORROSION

OUTBOARD MAINTENANCE DOESN'T NEED TO BE DIFFICULT OR EXPENSIVE. WHETHER YOU DO IT ALL YOURSELF OR HAVE ONE OF APPROXIMATELY 2,000 AUTHORIZED YAMAHA MARINE DEALERS DO PARTS OF IT FOR YOU, WE'RE COMMITTED TO HELPING YOU MAINTAIN YOUR OUTBOARD IN A WAY THAT'S EASY TO DO AND EASY TO UNDERSTAND.



# MAINTENANCE MATTERS<sup>®</sup>

A SIMPLE GUIDE FOR THE LONGEVITY OF YOUR OUTBOARD



**WHY MAINTENANCE?**



**LET'S GET STARTED**



**CORROSION PREVENTION**



**FUEL & FUEL SYSTEM**



**ELECTRICAL SYSTEM**



**POWER TRIM & TILT**



**PROPELLER SOLUTIONS**



**EXTERNAL APPEARANCE**



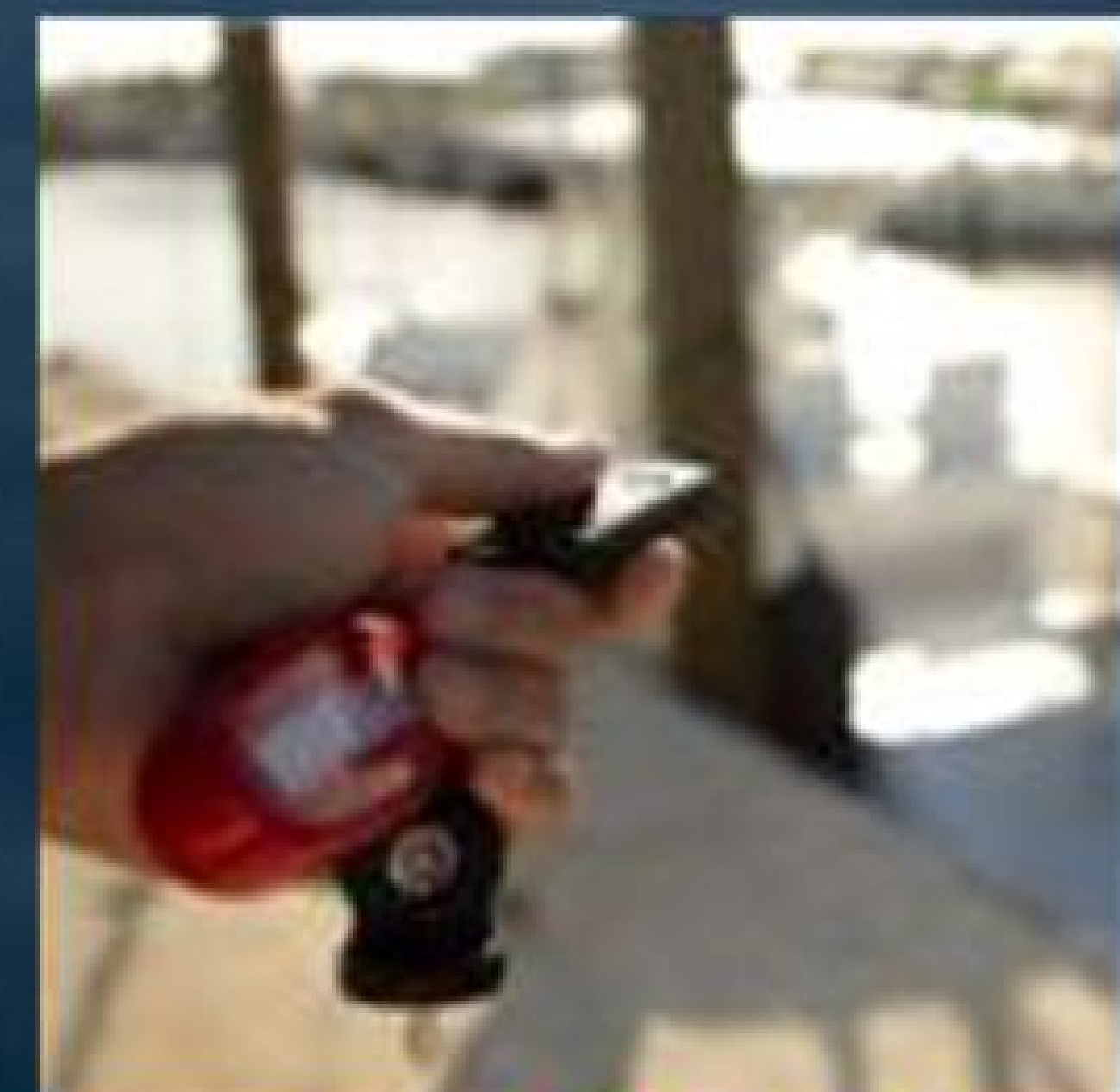
**INTERVAL MAINTENANCE**



**ENGINE OIL & LUBE**



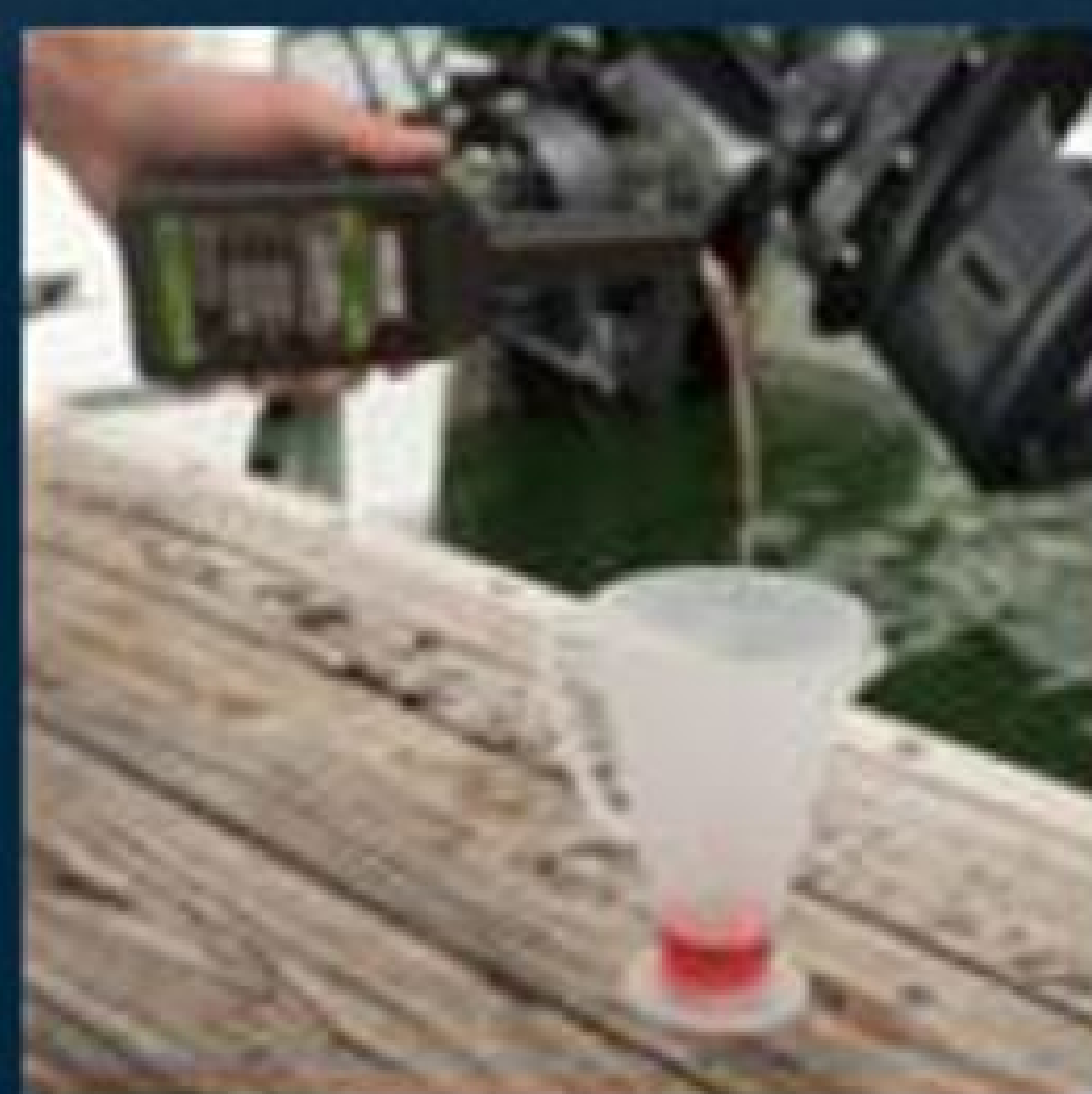
**LOWER UNIT**



**OTHER KEY ITEMS**



**EXTENDED STORAGE**



**CAPACITIES & SPECS**

# FISHING VENICE IN THE RANGER 1862 MPV

**By JEFF REYNOLDS**

WHEN I THINK OF FAVORITE FISHING DESTINATIONS AROUND THE WORLD, VENICE LOUISIANA RANKS RIGHT UP THERE NEAR THE TOP. FROM BASS TO REDS TO SHARKS, VENICE HAS IT ALL. ON OUR LAST TRIP, WADE HAD RECENTLY RIGGED OUT HIS NEW RANGER 1862 ALUMINUM BOAT, SO CODY AND I DECIDED TO TAKE IT WITH US AND MAYBE DO A LITTLE BASS FISHING OUT OF IT.

NOW THIS IS NOT YOUR EVERYDAY ALUMINUM BOAT. IT IS AN 18' RANGER WITH A 90 HORSE 4 STROKE YAMAHA, DUAL POWER POLES, GARMIN ELECTRONICS WITH SIDE AND DOWN SCAN, AND PRETTY MUCH EVERY THING BUT THE KITCHEN SINK.



OUR FIRST TRIP OUT, WE FISHED INSHORE IN AND AROUND THE CANES AND CAUGHT BASS, REDS, AND A COUPLE OF FLOUNDER. WE HAD A BLAST JUST LEARNING THIS NEW BOAT, DRIVING IT AROUND IN THE CUTS AND CANALS, AND GETTING BACK IN SOME PRETTY SKINNY WATER THAT YOU CAN'T GET MOST BOATS INTO, BUT WE WERE ONLY SCRATCHING THE SURFACE ON WHAT THIS BOAT CAN DO.

THE NEXT DAY FORECAST PREDICTED LIGHT WIND AND SUNSHINE SO CODY AND I DECIDED TO GO A LITTLE OFFSHORE AND CHASE SOME BULL REDS. WE GET STARTED EARLY THAT MORNING AND MADE ABOUT A 20 MILE RUN OUT TO THE OPEN WATER. NOW I'M NOT SAYING THAT THIS IS AN OFFSHORE BOAT, BUT IF YOU GET THE RIGHT CONDITIONS, THIS BOAT IS CAPABLE OF A LOT MORE THAN JUST DUCK HUNTING OR FISHING IN THE SHALLOW BACKWATERS. AS WE ARRIVE TO OUR FIRST SPOT WE STARTED GETTING EXCITED SEEING SOME SLICKS WHERE THE REDS ARE FEEDING. AFTER JUST A COUPLE OF CASTS WITH OUR POPPING CORKS CODY HOOKS UP WITH THE FIRST BULL RED OF THE DAY AND THAT WAS THE START TO A GREAT DAY OF FISHING. WE ABSOLUTELY WORE THE REDFISH OUT, CATCHING FISH UP TO 45 INCHES LONG. AND BY THE WAY, WHEN YOU HOOK A 40 INCH BULL RED THAT PULLS LIKE A 4 WHEEL DRIVE TRUCK AND YOUR IN AN 18' ALUMINUM BOAT IT WILL PULL YOU AROUND JUUST A BIT. WE PUT THE DRAGS ON OUR CABELA'S REELS TO THE TEST THAT DAY AND THEY PERFORMED FLAWLESSLY.

ON THIS TRIP WE HAD OUR RANGER LOADED DOWN WITH CODY AND MYSELF, ABOUT 10 ROD AND REELS, OUR TACKLE, A CAMERAMAN (WITH ALL OF HIS EQUIPMENT), AND MAN HE HAS A LOT OF STUFF, AND AN ENGEL COOLER WITH FOOD AND DRINKS. NOW I DON'T GUESS I NEED TO TELL YOU OUR BOAT WAS FULL, BUT WE STILL HAD PLENTY OF ROOM TO FISH. ALL TOGETHER IT WAS A GREAT DAY OF FISHING WITH MY BUDDY. NOW IF YOU ARE A DUCK HUNTER OR FISHERMAN OR BOTH AND YOU ARE LOOKING FOR A GREAT BOAT THAT CAN JUST ABOUT DO ANYTHING YOU WANT TO DO ON THE WATER, CHECK OUT THE RANGER 1862 ALUMINUM, YOU WILL NOT BE DISAPPOINTED.

**Ranger**  
BOATS  
rangerboats.com



# AMERICANA OUTDOORS

Presented By  
**GARMIN.**

WANT TO WIN FREE GUIDED FISHING  
AND HUNTING TRIPS ACROSS THE  
NATION? AMERICANA OUTDOORS IS  
OFFERING YOU THE OPPORTUNITY TO  
FISH AND HUNT WITH THE STAFF FOR  
FREE! SIGN UP TO WIN BY CLICKING THE  
LINK BELOW!

**WIN AN ALL-EXPENSE PAID FISHING TRIP!**

**REDFISHING  
GIVEAWAY!**

GUIDED BY  
AMERICANA  
OUTDOORS STAFF  
MEMBER,  
CODY LEVY



**BASS FISHING  
GIVEAWAY!**

GUIDED BY AMERICANA  
OUTDOORS STAFF MEMBER,  
CLARK WENDLANDT

**WIN AN ALL-EXPENSE PAID FISHING TRIP!**

**TEXAS TURKEY  
HUNT GIVEAWAY!**

GUIDED BY AMERICANA  
OUTDOORS STAFF MEMBER,  
JEFF REYNOLDS!

**WIN AN ALL-EXPENSE PAID HUNT!**



**WIN AN ALL-EXPENSE PAID HUNT!**

**DEER HUNT  
GIVEAWAY!**

GUIDED BY AMERICANA  
OUTDOORS STAFF  
MEMBER,  
WADE MIDDLETON!



**AMERICANA  
OUTDOORS**

**HOG HUNT  
GIVEAWAY!**

**WIN A GUIDED HOG HUNT WITH THE AMERICANA  
OUTDOORS STAFF!**

**CLICK HERE  
TO ENTER**

# ENGEL

## Coolers

### ***THE ENGEL LIVE BAIT COOLER***

WITH ENGEL,Äôs NEW LIVE BAIT COOLER, YOUR MINNOWS, SHRIMP OR OTHER LIVE BAIT WILL ALWAYS BE READY FOR ACTION, THANKS TO OUR POWERFUL 2X2 AIR PUMP AND INSULATED COOLER BOX. THE 2-SPEED AIR PUMP KEEPS THE WATER FULLY AERATED AND THE INSULATED COOLER SHIELDS EXPENSIVE BAIT FROM EXTREME TEMPERATURES, WHETHER YOU,ÄôRE FISHING IN THE DOG DAYS OF SUMMER OR OUT ON THE ICE IN JANUARY.



THE 2-SPEED ENGEL 2X2 AIR PUMP RUNS STRONG ON TWO (2) D-CELL BATTERIES (NOT INCLUDED). RUN ON HIGH SPEED WHEN YOUR COOLER IS FULL OF BAIT. TURN THE PUMP DOWN AND CONSERVE BATTERY POWER LATER IN THE DAY. PLUG INTO YOUR CAR OR BOAT,Äôs CIGARETTE LIGHTER USING THE HANDY 12V ADAPTER TO RUN THE PUMP OVERNIGHT AND KEEP BAIT FRESH FOR THE NEXT MORNING.

ENGEL LIVE BAIT COOLERS WILL KEEP YOUR BAIT LIVELY AND FRESH. 13, 19 AND 30 QT. MODELS. WHETHER YOU,ÄôRE FISHING FOR CRAPPIE, WALLEYE OR DOLPHIN, THERE,Äôs A SIZE JUST RIGHT FOR YOU.

CHECK OUT HOW THE AMERICANA OUTDOORS STAFF USES THEIR ENGEL LIVE BAIT COOLER DOWN ON THE COAST IN THE VIDEO BELOW!





# ROKU®

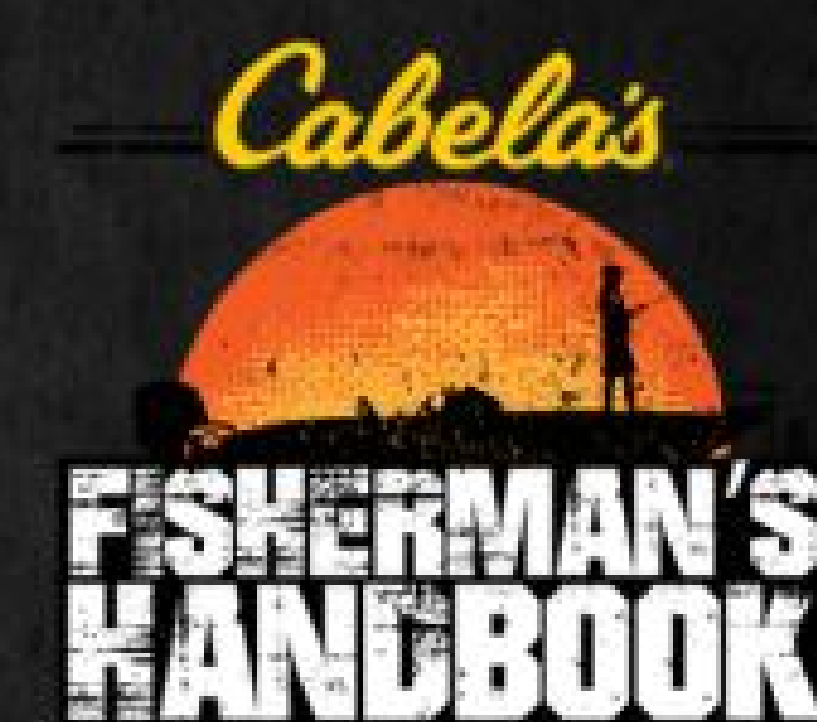
## ***OUTDOOR ACTION TV Now Live on Roku***

By CODY LEVY

SAN ANTONIO, TEXAS – CARECO TV IS PROUD TO ANNOUNCE THE LAUNCH OF A NEW DEDICATED HUNTING AND FISHING ROKU CHANNEL, OUTDOOR ACTION TV. THE CHANNEL, WHICH WENT LIVE IN DECEMBER OF 2015, HOSTS A WIDE VARIETY OF RECENT PROGRAMMING FOR THE AVID OUTDOORSMEN AND WOMEN WITH AN EMPHASIS ON HUNTING AND FISHING.

"OUTDOOR ACTION TV IS A GREAT RESOURCE FOR ANYONE THAT LOVES TO HUNT, FISH, OR BE IN THE OUTDOORS," SAID PRESIDENT OF CARECO TV, WADE MIDDLETON. "FROM FISHING TOURNAMENT COVERAGE FROM A VARIETY OF TOP EVENTS, TO DEER HUNTING, TO BASS FISHING TIPS AND TRICKS, OUTDOOR ACTION TV HAS SOMETHING FOR A WIDE RANGE OF VIEWERS, ALL ON DEMAND."

THE LAUNCH OF OUTDOOR ACTION TV GIVES PASSIONATE OUTDOOR ENTHUSIASTS A TOTAL OF NINE PROGRAMS TO VIEW WITH MORE TO BE SEEN IN THE NEAR FUTURE INCLUDING ALL 2016 EPISODES OF THE BELOW PROGRAMS. THE FULL PROGRAMMING LIST IS AS FOLLOWS:



If you have content that you are interested in hosting on Outdoor Action TV, contact CARECO TV LLC at 210.697-8081 or send an email to [HELLO@OUTDOORACTION.COM](mailto:HELLO@OUTDOORACTION.COM)



# THOMPSON/CENTER

*America's Master Gunmaker*

## **THOMPSON/CENTER ARMS INTRODUCES T/C COMPASS BOLT-ACTION RIFLE NEW FEATURE-RICH BOLT-ACTION RIFLE TO BE AVAILABLE FOR THE FALL 2016 HUNTING SEASON**

THOMPSON/CENTER ARMS ANNOUNCED THAT IT HAS EXPANDED ITS LINE OF INNOVATIVE PRODUCTS WITH THE INTRODUCTION OF THE NEW T/C COMPASS. DESIGNED TO DELIVER TODAY'S SPORT SHOOTERS AND HUNTERS WITH A FEATURE-RICH BOLT-ACTION RIFLE AT AN AFFORDABLE PRICE POINT, THE T/C COMPASS ELEGANTLY BLENDS AMERICAN-MADE CRAFTSMANSHIP AND VALUE INTO A PROFESSIONAL-GRADE RIFLE. THE NEW T/C COMPASS, WITH ITS ADVANCED FEATURE SET, IS THE LATEST ENTRY INTO THE COMPANY'S BROAD LINE OF THOMPSON/CENTER RIFLES, ALL DESIGNED TO DELIVER THE PERFORMANCE, ACCURACY AND EASE OF MAINTENANCE THAT HAS BECOME THE HALLMARK OF THE THOMPSON/CENTER ARMS BRAND.

"THE CONCEPT BEHIND THE T/C COMPASS WAS TO BE ABLE TO OFFER DEDICATED HUNTERS AND SHOOTERS AN AFFORDABLE BOLT-ACTION RIFLE THAT EXCEEDED THEIR EXPECTATIONS IN TERMS OF ACCURACY, RELIABILITY AND FUNCTIONALITY," SAID DANIELLE SANVILLE, BRAND MANAGER FOR THOMPSON/CENTER ARMS. "THE NEW T/C COMPASS EXPERTLY MEETS EACH OF THESE NEEDS WHILE DELIVERING A HIGHLY-CAPABLE BOLT-ACTION RIFLE THAT CAN MATCH ANY BUDGET. THE NEW RIFLES WILL BEGIN SHIPPING IN EARLY SUMMER, GIVING CONSUMERS PLENTY OF TIME TO PURCHASE, MOUNT OPTICS AND BRING THEM TO THE RANGE FOR SIGHTING IN BEFORE THIS YEAR'S HUNTING SEASON."

**COMING SOON**



*To a gun shop near you*

AT THE CENTER OF THE RIFLE IS THE T/C COMPASS' ALUMINUM PILLAR BEDDING DESIGN. THIS TESTED BEDDING SYSTEM POSITIVELY LOCATES THE RECEIVER AND FREE-FLOATS THE BARREL FOR OUTSTANDING ACCURACY OVER THE LIFETIME OF THE RIFLE. TO FURTHER ESTABLISH A SOLID, SMOOTH ACTION, THE T/C COMPASS FEATURES A THREE-LUG BOLT DESIGN WITH 60-DEGREE LIFT, WHICH ENABLES OPTIMAL SCOPE CLEARANCE WHEN LOADING AND UNLOADING THE RIFLE.

SHOOTERS OF ALL SKILL LEVELS WILL APPRECIATE THE T/C COMPASS' USER-ADJUSTABLE SINGLE-STAGE TRIGGER, WHICH ALLOWS THEM TO PRE-SET THEIR PREFERRED PULL RATE BETWEEN 3.5 AND 5 POUNDS WITH MINIMAL OVER-TRAVEL. THE T/C COMPASS' BUTTONED-RIFLED BARREL COMPLETE WITH 5R RIFLING PROVIDES CONSISTENT, RELIABLE ACCURACY THAT IS BACKED BY THOMPSON/CENTER'S MINUTE OF ANGLE (MOA) GUARANTEE. THE MOA GUARANTEE PROMISES THAT EACH RIFLE WILL DELIVER A ONE-INCH, THREE-SHOT GROUP AT 100 YARDS WITH THE USE OF PREMIUM AMMUNITION.

EACH T/C COMPASS IS ALSO STANDARD WITH A FACTORY THREADED BARREL FOR USE WITH COMPATIBLE SUPPRESSORS, COMPENSATORS AND MUZZLE BREAKS, BUT ALSO COMES STANDARD WITH

A THREAD-PROTECTOR FOR WHEN THESE ACCESSORIES ARE NOT IN USE. FOR IMPROVED HANDLING IN ALL FIELD ENVIRONMENTS, THE T/C COMPASS FEATURES AN ERGONOMIC, LIGHTWEIGHT CLASSIC STOCK DESIGN WITH MODERN CONTOURS AND TEXTURED GRIP PANELS. OPERATING CONTROLS ON THE RIFLE CONSIST OF AN EASY-TO-USE 3-POSITION SAFETY WITH BOLT LOCK. THIS TIME-TESTED DESIGN PROVIDES A TACTILE FEEL, CLEAR VISIBILITY AND EASY ACCESS WHEN ON THE RANGE OR IN THE FIELD.

ON TOP OF THE RECEIVER, THE T/C COMPASS COMES DRILLED AND TAPPED AND IS FURNISHED WITH SCOPE BASES FOR EASY INSTALLATION OF OPTICS. SWIVEL STUDS ARE CONVENIENTLY LOCATED AT THE FORWARD AND REAR PORTION OF THE STOCK TO HELP SIMPLIFY TRANSPORT WHILE IN THE FIELD. A DETACHABLE ROTARY MAGAZINE (5+1 IN STANDARD CALIBERS AND 4+1 IN MAGNUM CALIBERS) IS STANDARD WITH EACH RIFLE AND FITS FLUSH WITH THE STOCK IN ORDER TO PROVIDE SMOOTH, CONSISTENT FEEDING BETWEEN SHOTS. LIKE ALL BOLT-ACTION RIFLES FROM THOMPSON/CENTER, THE NEW T/C COMPASS IS BACKED BY A LIMITED LIFETIME WARRANTY DELIVERING ADDED PEACE OF MIND TO HUNTERS AND SHOOTERS EVERYWHERE.

#### T/C COMPASS SPECIFICATIONS:

CALIBERS: 204 RUGER, 5.56, .22-250, .243, .270, 7MM-08, 7MM, .308, .30-06 AND .300 WIN MAG

BARREL LENGTH: 22 INCHES (STANDARD CALIBERS) 24 INCHES (MAGNUM CALIBERS)

OVERALL LENGTH: 41- 41.5 INCHES

WEIGHT: 7.25 – 7.5 LBS.

LENGTH OF PULL: 13.25 INCHES

RATE OF TWIST: 1:9, 1:10, AND 1:12

MSRP: \$399



**THOMPSON/CENTER ARMS INTRODUCES  
T/C COMPASS BOLT-ACTION RIFLE**



# COLLEGE ANGLERS SCHROEDER & HEIGLEY SCHOOL 350-BOAT FIELD

JASPER, TEXAS - SAM RAYBURN IS KNOWN AS ONE OF THE PREMIER BIG-BASS FACTORIES IN THE LONE STAR STATE. HOWEVER, DURING THE PRESPAWN, IT CAN BE FICKLE AS THE HEFTY LARGEMOUTHS OFTEN SCHOOL UP IN TIGHT, MID-DEPTH LOCALES. WHILE THE SEARCH PROCESS IS LABORIOUS, ONCE A STAGING SPOT IS FOUND, THE FISHING CAN BE LIGHTS OUT. COLLEGE ANGLERS BLAKE SCHROEDER AND EASTON HEIGLEY DID THEIR HOMEWORK, PUT IN EXTRA PRACTICE TIME AND LOCATED A HANDFUL OF SWEET SPOTS WITH THEIR ELECTRONICS. WHILE THEY KNEW THESE AREAS HAD POTENTIAL, THEY HAD NO IDEA THEY WOULD PRODUCE 27 POUNDS, MORE THAN ENOUGH WEIGHT TO WIN THE 2016 SEASON OPENING TEXAS TEAM TRAIL EVENT, PRESENTED BY CABELA'S.

WHILE SCHROEDER AND HEIGLEY ARE YOUNG IN TERMS OF AGE, THEY POSSESS AMPLE SAM RAYBURN EXPERIENCE. BOTH ANGLERS ARE STUDENTS AT STEPHEN F. AUSTIN, A POWERHOUSE COLLEGE FISHING TEAM, LOCATED JUST NORTH OF RAYBURN. FURTHERMORE, HEIGLEY GREW UP IN BROOKELAND, TEXAS, AND HAS BEEN FISHING RAYBURN FOR MOST OF HIS LIFE.

"WE HAD SOME AREAS WHERE FISH NORMALLY HOLD THIS TIME OF YEAR," SAID SCHROEDER. "WE'VE BEEN ON THEM FOR A COUPLE WEEKS AND WE JUST CONTINUED TO CHECK ON THEM. THESE ARE CLASSIC PRESPAWN AREAS. LAST YEAR, WE KIND OF FELL BEHIND THE CURVE AND WERE TOO LATE TO ADJUST. THIS YEAR WE STAYED ON TOP OF WHAT THE FISH WERE DOING."

SCHROEDER AND HEIGLEY'S MAIN AREAS WERE LOCATED IN WATER 15 TO 20 FEET DEEP. THEY DID CATCH ONE OF THEIR FIVE WEIGH FISH UP SHALLOW.

"IT WAS A ROTATION OF ABOUT FIVE SPOTS," ADDED SCHROEDER. "WE JUST STUCK TO IT AND RAN OUR STUFF."

WITHIN THE FIRST FIVE MINUTES OF THE TOURNAMENT, SCHROEDER AND HEIGLEY CAUGHT A SOLID KEEPER, WHICH ENDED UP BEING THE SMALLEST ONE THEY WEIGHED. THEN THEY CAUGHT A BIG ONE WEIGHING ABOUT 5 OR 6 POUNDS AND LEFT THAT FIRST AREA WITH THREE IN THE BOX. THEY THEN



EASTON HEIGLEY AND BLAKE SCHROEDER PICTURED

ABOVE

CAUGHT A BIG ONE WEIGHING ABOUT 5 OR 6 POUNDS AND LEFT THAT FIRST AREA WITH THREE IN THE BOX. THEY THEN MOVED TO THEIR NEXT AREA AND FILLED OUT A FIVE-BASS LIMIT.

"WE WENT BACK TO OUR PRIMARY AREA AND CAUGHT ANOTHER DECENT FISH. THEN WE CAUGHT ANOTHER 5-OR 6-POUNDER. WE LEFT AGAIN, AND WENT TO ANOTHER SPOT. OUR THIRD CAST THERE PRODUCED ABOUT A 7-POUNDER, OUR BIGGEST FISH OF THE DAY."

THE YOUNG DUO THEN WENT SHALLOW, THINKING THERE COULD BE A FEW QUALITY FISH UP AS RAYBURN'S WATER LEVEL REMAINS ABOVE FULL POOL.

"WE FISHED THE BUSHES FOR A BIT AND CAUGHT ANOTHER 4-POUNDER AND THAT WAS PRETTY MUCH IT. WE CAUGHT EVERYTHING WE HAD BY ABOUT 12:30 P.M. WE THOUGHT WE HAD ABOUT 23 OR 24 POUNDS, BUT THEY WERE FAT AND FULL OF EGGS."

THE OFFSHORE PATTERN WAS CAROLINA RIGGING A STRIKE KING GAME HAWG. WHEN THEY FLIPPED THE BUSHES, THEY USED A BLACK-AND-BLUE BEAVER. THEY DESCRIBED THEIR STAGING AREAS AS BARE AND ALMOST VOID OF STRUCTURE.

"THEY'RE JUST FLATS BASICALLY - PLACES THEY LIVE IN THE PRESPAWN AND POSTSPAWN. SOME ARE TIMING ORIENTATED, SOME ARE JUST RESIDENT FISH. WE CAUGHT ABOUT 20 FISH THROUGHOUT THE DAY. WE FISHED REALLY CLEANED AND CAPITALIZED ON EVERYTHING THAT BIT."



AT AGES 20 AND 19, SCHROEDER, A FINANCE MAJOR, AND HEIGLEY, A MARKETING MAJOR, AREN'T EVEN OLD ENOUGH TO LEGALLY ENJOY A CELEBRATORY ALCOHOLIC BEVERAGE. BUT THEY WILL RETURN TO COLLEGE HAVING WON A NEW BOAT AND MOTOR PACKAGE - A TRITON 189TRX WITH A 150-HORSEPOWER MERCURY OUTBOARD AND \$3,525 OF ANGLERS ADVANTAGE CASH.

"IT'S AN HONOR TO BEAT THOSE GUYS. WE'VE SEEN A LOT OF THEM ON TV GROWING UP. WE KNEW WE HAD THE TALENT TO COMPETE, BUT WE HAD TO EXECUTE. IT FEEL GREATS TO BE NO. 1 IN A 350-BOAT FIELD."

"IT'S FUNNY. LAST SUNDAY MORNING MY ALARM WENT OFF FOR ANOTHER DAY OF PRACTICE. I WAS DEBATING DO I GET UP EARLY OR NOT. I DECIDED I WOULD DO IT FOR THE \$30,000. I GUESS THAT PAID OFF."

ROUNDING OUT THE TOP 10 TEAMS AT THE 2016 TEXAS TEAM TRAIL EVENT ON SAM RAYBURN:

2ND: KRIS WILSON AND CHARLES BEBBER , 24.68

6TH: CRAIG MAY AND JOHNNY FRANKS, 20.95

3RD: KYLE ROWE AND TED PATE, 22.63

7TH: MATTHEW MCARDLE AND JOSH BENSEMA, 20.80

4TH: JAMIN BROWER AND RICKY BLANKENSHIP, 21.29

8TH: RUSTY HARVEY AND CHRIS HARVEY, 20.50

5TH: JAMES CAMPISE AND BOBBY VICE, 21.18

9TH: PHIL MARKS AND TIM RENEAU, 20.44

10TH: STEPHEN JOHNSTON AND JOHN ILES, 20.39

[CLICK HERE FOR FULL RESULTS](#)

# GARMIN®

## GARMIN QUATIX MARINE GPS SMARTWATCH

"BUILT TO WITHSTAND THE HARSH MARINE ENVIRONMENT, IT'S THE PERFECT GPS SMARTWATCH FOR MARINERS WHO LIVE AN ACTIVE LIFESTYLE ON AND OFF THE WATER."

GARMIN INTERNATIONAL INC., A UNIT OF GARMIN LTD. (NASDAQ:GRMN), ANNOUNCED QUATIX 3, THE NEXT-GENERATION MARINE GPS SMARTWATCH EQUIPPED WITH IMPORTANT CRUISING, FISHING AND SAILING CAPABILITIES. MORE THAN A WATCH, THE QUATIX 3 IS A WEARABLE INSTRUMENT THAT STREAMS NMEA® 2000 DATA FROM COMPATIBLE ONBOARD GARMIN MARINE ELECTRONICS. WITH ITS SUNLIGHT-READABLE HIGH-RESOLUTION COLOR DISPLAY, RUGGED AESTHETIC, AND SLEEK NEW FORM FACTOR, THE QUATIX 3 COMBINES THE GPS AND WEARABLE TECHNOLOGY THAT GARMIN IS KNOWN FOR. THE QUATIX 3 COMES PRELOADED WITH MARINE-SPECIFIC FEATURE SETS, AND BOASTS SUPPORT FOR ADDITIONAL MULTISPORT ACTIVITIES. COMPLETE WITH SMART NOTIFICATIONS, THE QUATIX 3 CAN BE FULLY CUSTOMIZED TO THE USER, SO IT'S EASY TO TRANSITION FROM WATER TO LAND.

"GARMIN HAS BEEN DESIGNING WEARABLES FOR MORE THAN A DECADE, AND WE'RE EXCITED TO MERGE FEATURE AND DESIGN QUALITIES FROM THE FENIX® 3, ONE OF OUR MOST POPULAR WATCHES, WITH MARINE-CENTRIC CAPABILITIES FOR QUATIX 3 – THE FIRST GENERAL-PURPOSE BOATING SMARTWATCH," SAID DAN BARTEL, GARMIN VICE PRESIDENT OF WORLDWIDE SALES. "BUILT TO WITHSTAND THE HARSH MARINE ENVIRONMENT, IT'S THE PERFECT GPS SMARTWATCH FOR MARINERS WHO LIVE AN ACTIVE LIFESTYLE ON AND OFF THE WATER."

DESIGNED FOR ALL TYPES OF MARINERS, THE QUATIX 3 BOASTS A FULL NAVIGATIONAL AND MARINE TOOLSET. IT ACTS AS A WEARABLE INSTRUMENT THAT WIRELESSLY STREAMS NMEA 2000 BOAT DATA SO USERS WILL HAVE ACCESS TO IMPORTANT SENSOR INFORMATION, INCLUDING SPEED, DEPTH, TEMPERATURE, WIND DATA AND MORE, NO MATTER WHERE THEY'RE AT ON THE BOAT. USING A QUATIX 3, MARINERS CAN ALSO START AND STOP RECORDING OR TAKE STILLS WITH A GARMIN VIRB® ACTION CAMERA, AND CONTROL THEIR FUSION® STEREO SYSTEM\* RIGHT FROM THEIR WRIST. WITH SAFETY IN MIND, A DEDICATED MOB HOTKEY ALSO ALLOWS USERS TO DROP AN MOB WAYPOINT AND START NAVIGATION BACK TO THAT POINT. THE QUATIX 3 ALSO FEATURES A 3-AXIS ELECTRONIC COMPASS, BAROMETER, AND AUTO-CALIBRATING ALTIMETER.







THE QUATIX 3 IS PRELOADED WITH A NUMBER OF IMPORTANT MARINE-SPECIFIC FEATURES AND WATCH FACES. MARINERS WILL RECEIVE UP-TO-DATE TIDE DATA\* DOWNLOADED FOR THE AREA THEY'RE IN THROUGH A SMARTPHONE, AND WILL HAVE ACCESS TO THAT DATA FOR SEVEN DAYS. THE QUATIX 3 IS ALSO EQUIPPED WITH AN ANCHOR ALARM TO WARN USERS OF DRIFT, AS WELL AS AN ALARM CLOCK AND ANCHOR RODE CALCULATOR THAT TELLS THE USER THE PROPER LENGTH OF ANCHOR LINE TO PUT OUT. FOR FISHING, A COMPETITION TIMER AND FISH CATCH LOG ARE AVAILABLE TO HELP USERS KEEP TRACK OF THE FISH THEY'VE CAUGHT AND THE TIME REMAINING BEFORE GETTING BACK TO WEIGH-IN. AND FOR SAILING, THE QUATIX 3 FEATURES TACK ASSIST, RACE COUNTDOWN TIMER, DISTANCE TO START LINE, AND TIME TO BURN.

WITH ITS SUNLIGHT-READABLE COLOR DISPLAY WITH AN LED BACKLIGHT, DATA IS EASILY VISIBLE IN ANY LIGHT. WATER RATED TO 100 METERS, THE QUATIX 3 MARINE SMARTWATCH HAS A HIGH-STRENGTH, SCRATCH-RESISTANT DOMED SAPPHIRE LENS WITH GLASS-FIBER REINFORCED HOUSING, AND CAN WITHSTAND MOST WATER ACTIVITIES. WITH AN OMNI-DIRECTIONAL STAINLESS STEEL EXO™ ANTENNA AND HIGH-SENSITIVITY GPS WITH GLONASS SUPPORT, IT HAS THE ABILITY TO TRACK IN MORE CHALLENGING ENVIRONMENTS THAN GPS ALONE. THE QUATIX 3 BOASTS UP TO 20 HOURS OF BATTERY LIFE IN GPS MODE, 50 HOURS IN ULTRATrac™ MODE AND SIX WEEKS IN WATCH MODE (DEPENDING ON SETTINGS).

LIKE OTHER GARMIN GPS WEARABLES, THE QUATIX 3 FEATURES MULTISPORT FUNCTIONS FOR GOLFING, SUP, ROWING, SWIMMING, HIKING, SKIING, RUNNING, AND MORE. WITH DAILY ACTIVITY TRACKING<sup>1</sup> AND CONNECTED FEATURES, IT DOUBLES AS A STYLISH SMARTWATCH. USERS CAN TRACK THEIR DAILY STEPS, MILEAGE, AND SLEEP, THEN WIRELESSLY UPLOAD ALL THEIR DATA TO THE RECENTLY UPDATED GARMIN CONNECT™ MOBILE APP. THEY CAN ALSO CONNECT THEIR WATCH TO A COMPATIBLE SMARTPHONE FOR CALL, TEXT AND EMAIL NOTIFICATIONS RIGHT ON THE WATCH. ADDITIONALLY, THE QUATIX 3 IS CONNECT™ IQ COMPATIBLE, SO USERS CAN CUSTOMIZE THEIR WATCH WITH A VARIETY OF WATCH FACES, DATA FIELDS, WIDGETS AND APPS.

THE QUATIX 3 IS EXPECTED TO BE AVAILABLE IN Q1 2016 WITH A SUGGESTED RETAIL PRICE OF \$599.99.

  
**GARMIN**®

# AMERICANA OUTDOORS

Presented By  
**GARMIN.**

## *WINTERTIME BASS TACTICS WITH THE AMERICANA OUTDOORS STAFF*



# FISHING THE CONDITIONS

BY WADE MIDDLETON

DEPENDING ON THE LAKE AND FISHING CONDITIONS MY TWO FAVORITE WAYS TO CATCH A BIG BASS IN THE LATE WINTER UNDER PRE SPAWN CONDITIONS WHEN WATER CONDITIONS ALLOW FOR IT ARE A SOFT PLASTIC STICK BAIT OR LIPLISS CRANKBAIT. BOTH TOTALLY DIFFERENT PRESENTATIONS BUT BOTH DEADLY IN THE RIGHT SITUATION.



WHEN WATER TEMPS ARE IN THE LOW TO MID 50'S I LOVE TO TAKE A LIPLISS CRANKBAIT LIKE THE SPRO ARUKU SHAD IN EITHER A MUDBUG RED OR TEXAS CRAW COLORS AND FISH IT AROUND HYDRILLA NEAR DRAINS AND

DITCHES LEADING TO SPAWNING FLATS. WHEN WATER TEMPS ARE IN THE UPPER 50'S GOING INTO LOW 60'S AND I CAN FIND AREAS WHERE FISH ARE SETTING UP TO SPAWN I SLOW DOWN AND FISH A BIG BITE TRICK STICK WEIGHTLESS. MY GO TO COLORS ARE GREEN PUMPKIN OR WATER MELON RED.

ROD AND REEL SET UPS FOR BOTH ARE TYPICALLY CABELA'S TOURNAMENT ZX JIG AND WORM RODS THAT GIVE ME BOTH THE BACKBONE AND SENSITIVITY TO FISH BOTH BAITS EFFECTIVELY. I WILL MORE OFTEN THAN NOT FISH THEM ON A CABELA'S VERANO REEL SPOOLED WITH SUNLINE SUPER FLORCARBON LINE IN 16 POUND TEST.

I ALWAYS HAVE SEVERAL OTHER BAITS TIED ON SUCH AS A JIG, SWIMBAIT, SHALLOW CRANKBAIT AS WELL AS OTHERS SO THAT I CAN FISH THE CONDITIONS AT THAT MOMENT!



Presented By  
**GARMIN.**

# FISHING THE UMBRELLA RIG FOR WINTERTIME

## BASS

BY JEFF REYNOLDS

MY FAVORITE LURE IN THE WINTER FOR BIG BASS IS WITHOUT A DOUBT THE UMBRELLA RIG. I THINK ANYONE THAT HAS THROWN IT WILL AGREE THAT IF THE WATER IS NOT MUDDY, IT'S A HARD LURE TO BEAT. IT'S A BAIT THAT CAN BE FISHED DEEP OR SHALLOW WHICH MAKES IT USEFUL IN MANY SITUATIONS. FOR ME, IN THE WINTER I LIKE TO LOOK FOR FISH SCHOOLED UP IN DEEPER WATER AROUND BLUFFS OR CREEK CHANNELS. WHEN I FIND THE FISH ON MY GARMIN ELECTRONICS I WILL TRY TO FISH MY UMBRELLA RIG RIGHT ABOVE THE SCHOOL.

THE DEPTH I WANT TO KEEP MY BAIT WILL DECIDE WHAT SIZE SWIMBAIT HEADS I WILL USE. THIS CAN RANGE FROM 1/16TH OUNCE TO 3/4 OUNCE JIG HEADS. FOR MY SWIMBAITS, WHEN I AM FISHING DEEPER THAN 10 FEET, I LIKE TO USE 4 1/2 TO 5 1/2 INCH BAITS IN A SHAD COLOR. THIS BAIT LOOKS LIKE A SCHOOL OF SHAD SO IT IS HARD FOR THE FISH TO RESIST. I USE 65LB. BRAID, A 7'9" CABELA'S TOURNAMENT ZX UMBRELLA RIG ROD, AND A CABELA'S ARACHNID REEL TO FISH THE UMBRELLA RIG. THE BIG ROD MAKES IT A LOT EASIER TO CAST.



GOOD LUCK AND BE SURE TO POST YOUR WINTERTIME CATCHES TO THE AMERICANA OUTDOORS FACEBOOK PAGE!



Presented By  
**GARMIN.**

# FISHING JIGS AND DROPS

BY CODY LEVY

WINTERTIME FISHING CAN BE A FICKLE TIME OF YEAR AND HAS BEEN FOR ME FOR QUITE SOME TIME. I FINALLY FOUND SUCCESS WHEN I STARTED KEYING IN MORE ON THINGS LIKE DEEP POINTS, DROPS, BLUFF WALLS, OR ANY TYPE OF DEEP STRUCTURE. MY FAVORITE BAIT TO THROUGH IS A BAIT THAT CAN TRULY BE USED THROUGHOUT THE YEAR - A FOOTBALL HEAD JIG. A JIG IS ABOUT AS VERSATILE AS YOU CAN IMAGINE WITH TECHNIQUES LIKE DRAGGING, HOPPING IT, AND SWIMMING IT, BUT IN THE WINTERTIME WHEN WATER TEMPS ARE BELOW FIFTY, I HAVE FOUND THE BEST TECHNIQUE TO BE A SLOW DRAG.



THERE ARE A FEW CHANGES THAT I MAKE WHEN THROWING A JIG IN COLD WATER. THE FIRST OF WHICH WOULD BE TO THROW A SMALLER TRAILER ON THE JIG TO TRY TO ELIMINATE SHORT STRIKES. THE SECOND WOULD BE CUTTING DOWN THE SKIRT OF THE JIG MAYBE A QUARTER OF AN INCH JUST FOR A SMALLER PROFILE.



THE ROD OF CHOICE FOR A JIG WOULD HAVE TO BE THE CABELA'S TOURNAMENT ZX JIG AND WORM ROD. THE 7'2" TOURNAMENT ZX ROD HAS ENOUGH BACKBONE IN THE ROD TO PULL A BIG FISH OUT OF ANY TYPE OF COVER AND A FAST ENOUGH TIP TO CAST A COUNTRY MILE. PAIR THAT WITH A CABELA'S VERANO REEL SPOOLED WITH TWENTY POUND SUNLINE ASSASSIN FLUOROCARBON, AND YOU'RE SET!

NEXT IS FINDING THE KEY AREAS THAT WILL HOLD FISH. GARMIN'S LAKEVU HD ULTRA MAPS WITH 17,000 U.S. LAKES AND 5,700 LAKES WITH 1 FT CONTOURS SHORE-TO SHORE WHICH ARE CRITICAL IN HELPING YOU FIND THOSE POINTS AND DROPS THAT WILL LEAD YOU TO THE BIG GIRLS! THE LAKEVU HD

ULTRA MAPS ALSO COME WITH DEPTH RANGE SHADING WHICH LETS YOU VIEW YOUR TARGET DEPTH AND BE MORE EFFECTIVE WHILE ON THE WATER.

ONCE YOU HAVE THOSE AREAS KEYED IN WITH YOUR ELECTRONICS, IT'S GO TIME! CAST AWAY AND GOOD LUCK ON YOUR NEXT TRIP TO THE LAKE!

# WINTERTIME JERKIN'

BY CLARK WENDLANDT

WHEN TALKING ABOUT MY FAVORITE WINTERTIME BIG-BASS-CATCHING TECHNIQUE I WOULD PROBABLY START WITH A SUSPENDING JERKBAIT. FISHING A JERKBAIT REQUIRES CLEAR WATER AND A TON OF PATIENCE. FIRST LET'S START WITH THE BAIT. THE KEY TO FISHING THIS BAIT IN THE WINTER IS TO FISH IT VERY SLOWLY. WHEN WATER TEMPS GET BELOW 50 DEGREES, BASS MAY BE FEEDING DAILY, BUT THEY JUST DON'T MOVE VERY QUICKLY. THE REASON A SUSPENDING JERKBAIT WORKS SO WELL IS THAT SHAD, WHEN TRAPPED IN COLD-WATER LITTLE SHALLOWS, WILL START TO DIE, WHICH MAKES THEM EASY PREY FOR BIG BASS. I HAVE FISHED LAKES IN JANUARY AND FEBRUARY WHERE THERE ARE LITERALLY THOUSANDS OF SHAD DYING; THEY JUST GOT TRAPPED TOO SHALLOW. WHEN THEY DIE, THEY



TWITCH AND SUSPEND, TWITCH AND SUSPEND, MAKING THEM VERY EASY PREY FOR BIG BASS. I USUALLY START MY APPROACH AS TWITCH, TWITCH THEN PAUSE. AT FIRST I MAY NOT PAUSE FOR LONG, BUT SOMETIMES I MAY EVEN PAUSE 30 SECONDS OR MORE. YOU HAVE TO LET THE FISH TELL YOU, BUT PATIENCE IS KEY IN THIS KIND OF FISHING.

THE TACKLE IN FISHING THIS TYPE OF PRESENTATION IS ALSO KEY. FIRST, LET'S START WITH THE ROD. I PREFER A CABELA'S TOURNAMENT ZX JERKBAIT/TOPWATER ROD. IT IS NOT A LONG, ROD, BUT IT'S PERFECT FOR CASTING AND JERKING A BAIT ALL DAY. THE REEL I LIKE IS THE CABELA'S ARACHNID BAITCASTING REEL. IT HAS A 6.3/1 GEAR RATIO WHICH SEEMS PERFECT FOR THIS APPLICATION. FOR LINE I PREFER FLUOROCARBON IN 10 POUND TEST MOST OF TIME. FLUOROCARBON WILL HELP KEEP THE BAIT DOWN IN THE WATER COLUMN. AS FOR THE BAIT, I JUST TAKE IT OUT OF THE PACKAGE AND THROW IT - VERY SLOWLY.

THE LAST THING TO CONSIDER IS WHERE TO THROW THE BAIT. IT IS REALLY NOT THAT COMPLICATED A TECHNIQUE. IN THE WINTER AND EARLY SPRING, FISH USUALLY PREFER DEEPER WATER. BLUFFS AND DEEP WATER OFF OF POINTS WOULD BE MY PLACES TO START. BASS LIKE TO SUSPEND THIS TIME OF YEAR, AND THE GREAT THING ABOUT A SUSPENDING JERKBAIT IS IT WILL STAY IN FRONT OF THE FISH FOR AS LONG AS YOU WANT IT TO. CHANNEL SWINGS MIGHT ALSO BE GOOD PLACES TO TRY. REALLY ANYWHERE DEEP WATER ACCESSES A FLAT CAN BE GOOD. IT ALSO WORKS REALLY WELL OVER THE TOP OF GRASS. I ALWAYS HAVE A JERKBAIT TIED ON IN THE WINTER AND EARLY SPRING, AND IT CAN PAY SOME BIG DIVIDENDS IF YOU HAVE ENOUGH PATIENCE. GOOD FISHING.



# Permethrin Premium Insect Repellent

# SAWYER



For use on clothing, tents, and other gear, Sawyer Permethrin not only repels insects, they actually kill ticks, mosquitoes, chiggers, mites, and more than 55 other kinds of insects on contact. The active ingredient Permethrin is a synthetic molecule similar to pyrethrum which is taken from the Chrysanthemum flower.

Permethrin is odorless after drying and will not stain or damage clothing, fabrics, plastics, finished surfaces, or any of your outdoor gear. A single application lasts 6 washings or 42 days of sun exposure.

## Features:

This insect-killing repellent for your clothing is effective against ticks, chiggers, mites and mosquitoes for up to six weeks.

This nonaerosol pump bottle contains enough spray to coat full outfits

Although we consider a full outfit to be one shirt, trousers and socks; we recommend you still pack underwear.

One treatment will last up to six washings or six weeks before clothing has to be treated again

If you treat your tent, you can expect full potency for up to 40 days of direct sunlight. This is a great way to give your entire campsite a barrier of protection

Use it while hunting for an odorless way to protect yourself from common bugs

Effective against ticks that carry Lyme disease and other fairly common diseases like Rocky Mountain Spotted Fever

Repellent should be applied outdoors and before clothing is worn; after it's treated, hang clothing and let dry two hours (four hours in humid conditions)

Avoid contact with skin and eyes during application phase

Active Ingredient: Permethrin (0.5%)

[Click here for additional tips and tricks on how to use Permethrin.](#)



Americana Outdoors heads to Bienville Plantation in Florida to meet up with University of Alabama and Liberty University to crown a Ranger Cup University Challenge Champion. Qualifying out of the Cabela's Collegiate Bass Fishing Series and the College FLW Circuit, these two teams will compete to win this prestigious college fishing title on a world famous fishery!

Check out the first and second half of the competition in this one of a kind tournament format involving two different bodies of water on on Bienville Plantation's trophy lakes!



**ONLY 1**  
COLLEGE CONTINGENCY PROGRAM  
**DELIVERS LIKE THIS**



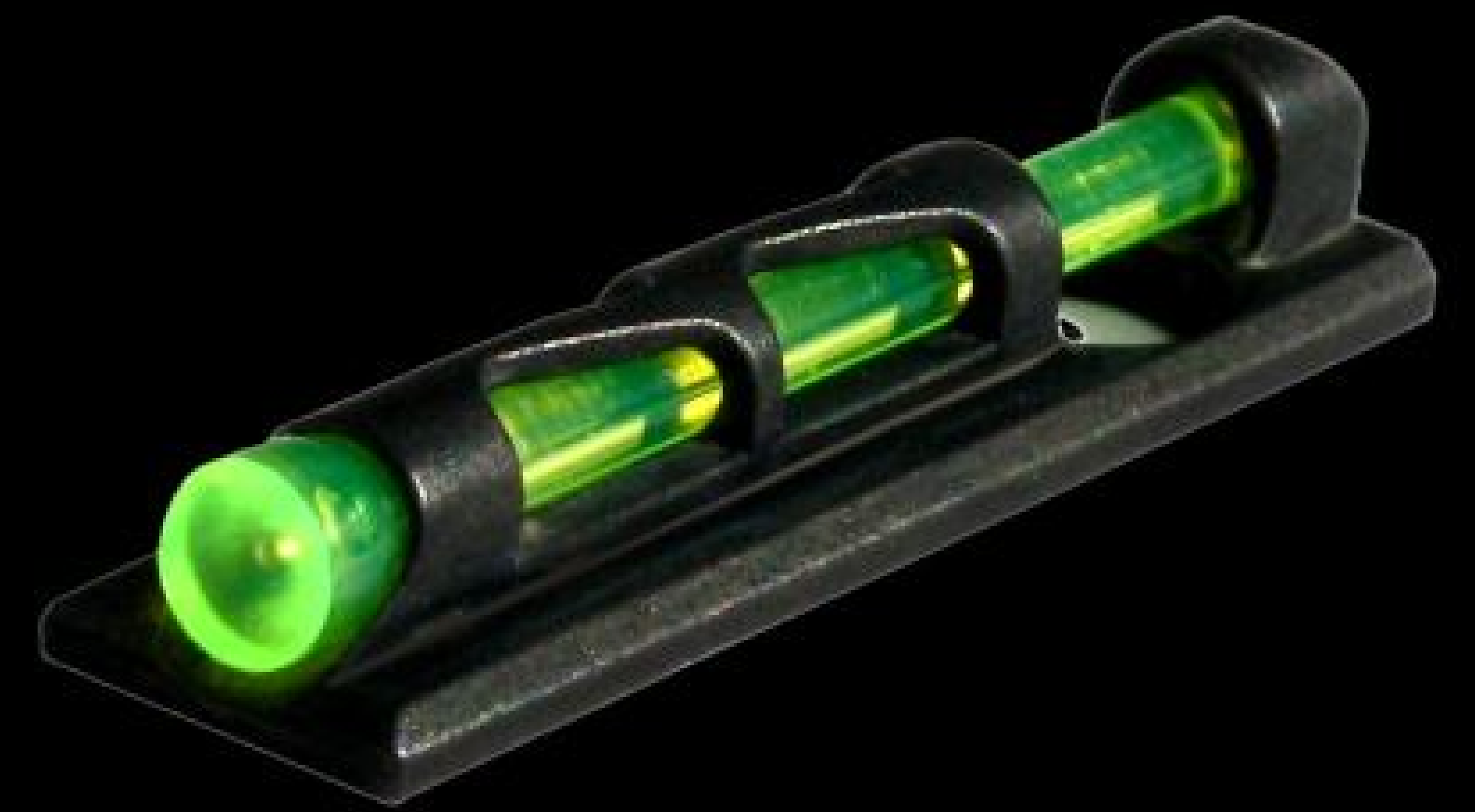


# LITHIVIZ® INTRODUCES LITEWAVE™ FOR COMPSIGHT®

SEE WHAT YOU'VE BEEN MISSING™  
**HIVIZ®**  
SHOOTING SYSTEMS

HIVIZ® SHOOTING SYSTEMS ANNOUNCES THAT THEIR LATEST LITEWAVE™ INNOVATION IS NOW AVAILABLE ON THEIR VERY POPULAR COMPSIGHT® FOR SHOTGUNS.

THE NEW LITEWAVE COMPSIGHT®, DESIGNED SPECIFICALLY FOR COMPETITIVE SHOTGUN SPORTS, WILL CONTINUE TO HAVE A LOW-PROFILE BASE THAT WILL ACCOMMODATE DIFFERENT LITEPIPE™ SIZES IN VARIOUS COLORS GIVING COMPETITIVE AND RECREATIONAL SHOOTERS AND HUNTERS ALIKE AN EDGE IN ALL LIGHTING CONDITIONS. THE DESIGN ITSELF FEATURES A STATE OF THE ART EXOSKELETON FRAME ALLOWING AN UNPRECEDENTED AMOUNT OF LIGHT TO ENTER THE LITEPIPE™ OFFERING AN EVEN BRIGHTER SIGHT PICTURE WHILE MAINTAINING EXTREME DURABILITY.



PHIL HOWE, PRESIDENT AND CEO, STATES, "WE HAVE BEEN ANXIOUS TO BRING THE CUTTING-EDGE OF TECHNOLOGY OF LITEWAVE™ TO OUR POPULAR SHOTGUN LINE. WE PRIDE OURSELVES IN SETTING THE STANDARD FOR SIGHT PERFORMANCE FOR BOTH COMPETITIVE AND RECREATIONAL USE, AND LITEWAVE™ FOR SHOTGUN ROUNDS OUT OUR OFFERING SETTING US APART FROM OTHER SIGHT MANUFACTURERS ON THE MARKET. OUR CUSTOMERS CAN TAKE CONFIDENCE IN KNOWING THAT IF THEY ARE SHOOTING A HIVIZ® SIGHT, THEY ARE GETTING THE BRIGHTEST, BEST SHOOTING EXPERIENCE POSSIBLE."

ALL LITEWAVE™ COMPSIGHT® SIGHTS FIT MOST COMMON SHOTGUNS WITH A REMOVABLE FRONT BEAD AND ARE PACKAGED WITH FIVE THREAD SIZES TO FIT MOST THREAD PATTERNS. THEY ALSO INCLUDE 7 REPLACEMENT LITEPIPES (3 EACH RED AND GREEN IN .105, .120, AND .135 DIAMETER AND ONE WHITE IN .135) MEETING THE SIGHT-PICTURE AND LIGHT REQUIREMENTS OF A VARIETY OF SHOOTERS.

RECOMMENDED RETAIL: \$41.95

HIVIZ SHOOTING SYSTEMS MANUFACTURES LIGHT-GATHERING FIBER OPTIC SIGHTS, TRITIUM SIGHTS, RECOIL PADS AND ACCESSORIES FOR THE SHOOTING INDUSTRY. FOR MORE INFORMATION VISIT [WWW.HIVIZ-SIGHTS.COM](http://WWW.HIVIZ-SIGHTS.COM) OR CONTACT SCOTT STEIERT AT 800-589-4315.





# **HOBIE NAMES TOP GUN FISHING TEAM**

**REPEAT IFA KAYAK TOUR CHAMPION BENTON PARROTT IS ARGUABLY THE MOST DECORATED TOURNAMENT ANGLER IN HOBIE® KAYAK FISHING HISTORY. JEFF ANDERSON HAS MORE THAN 50 MILLION YOUTUBE VIEWS TO HIS CREDIT. QUINTON ECHOLS IS A LITERAL LIFE SAVER, A FIREFIGHTER / PARAMEDIC WHO CHASES BASS TO BURN OFF THE STRESS OF DIFFICULT JOB. KEVIN WORKMAN IS A KAYAK HAWG HUNTER WHO BEATS POWERBOATERS GAME. THEY JOIN NINE OTHER ELITE KAYAK ANGLERS ON HOBIE FISHING'S 2016 TOP GUN TEAM.**



**"THE TOP GUNS ARE HAND-SELECTED FISHING TEAM MEMBERS THAT HAVE GONE ABOVE AND BEYOND. THEY ARE RENOWNED FOR THEIR SKILLS ON AND OFF THE WATER AS ANGLERS AND AS HOBIE REPRESENTATIVES," SAYS KEVIN NAKADA, HOBIE FISHING TEAM COORDINATOR.**

**EVERY 2016 TOP GUN LIVES AND BREATHES KAYAK FISHING, AND ALL OF THEM HAVE A GIFT FOR SHOWCASING THEIR PARTICULAR CORNERS OF THE SPORT. BEGINNING IN FEBRUARY, THEY WILL SHARE THEIR KNOW-HOW IN WEEKLY STORIES PUBLISHED ON THE HOBIE FISHING TOP GUN PAGE. WITH TOP GUNS SPREAD FAR AND WIDE ACROSS NORTH AMERICA AND HAWAII, THE TOPICS ARE SURE TO BE DIVERSE.**

**TWO-TIME TOP GUN BRANDON BARTON IS A SKILLED BULL RED TECHNICIAN. FELLOW FLORIDIAN MATTHEW VANN IS AN INSHORE AND OFFSHORE DOUBLE THREAT. SHAWN BARHAM BRAVES THE CHILLY WATERS OF NEW ENGLAND FOR MARAUDING STRIPERS. SOUTHERN CALIFORNIAN LARRY LAUMANN IS SO DRIVEN AND ADVENTUROUS HE STARTED HIS SALTWATER FISHING CAREER LONG AGO AS A TEEN ON A BODY BOARD.**

**"LOOKING BACK, I REALLY WISH I HAD FOUND THE ADVANTAGE OF SIT-ON-TOP KAYAKS THEN," LAUMANN SAYS, BUT IT DIDN'T TAKE HIM LONG TO CATCH ON TO THE EASE OF BEACH LAUNCHING – AS WELL AS THE VALUE HOBIE'S UNIQUE FORM OF PEDAL POWER, WHICH MEANS NEVER HAVING TO PUT DOWN A FISHING POLE WHILE UNDER WAY. "ABOUT 2005, THE ADVANTAGES OF THE MIRAGEDRIVE® SUNK INTO MY BRAIN. I'M SURE I WAS ONE OF THE FIRST LA JOLLA AREA KAYAK FISHERMEN SHOOTING ACROSS THE WATER ON A HOBIE," HE ADDS.**

**FOR CHRISTINA WEBER, ACHIEVING TOP GUN STATUS IS A LIFELONG DREAM COME TRUE. THE SOUTH FLORIDIAN HAS ALWAYS WANTED A CAREER IN FISHING (GETTING STARTED IN TOURNAMENT FISHING AT JUST AGE 15 WILL CAUSE THAT). SHE SAYS KAYAK FISHING IS PURE SERENDIPITY, A BOAT THAT CAN TAKE HER ANYWHERE AND EVERYWHERE, AT JUST THE RIGHT SPEED. "I ALMOST CAN'T STAND TO BE ON A POWERBOAT. ALL I SEE ARE MISSED OPPORTUNITIES BLASTING BY AT 60 MPH," SHE SAYS.**

**FOR ANDERSON, MAN OF THE 50 MILLION YOUTUBE VIEWS, SHARING THE STROKE FOR KAYAK FISHING GETS HIS HEART PUMPING ALMOST AS MUCH AS A HOT SALMON RIP-PING LINE OFF A REEL. THE SURPRISES ARE A BONUS. "I JOINED SOME GOOD FRIENDS ON A HALIBUT FISHING TRIP IN WASHINGTON STATE AND ENDED UP WITH VIDEO FOOTAGE OF A LARGE OCTOPUS THAT BECAME THE MOST VIEWED FISHING VIDEO ON YOUTUBE," HE SAYS WITH AN AIR OF DISBELIEF.**



**2016 HOBIE FISHING TOP GUN KEVIN WORKMAN WITH ONE OF HIS HAWGS.**

**THE UYEDA BROTHERS – THE INSEPARABLE KEVIN AND GARETH – VENTURE FAR OFFSHORE OF OAHU ON THEIR MIRAGE® TANDEM ISLAND TO TANGLE WITH POWERFUL BILLFISH. WHAT MAKES THEM TOP GUNS?**

**"I GUESS LIKE MAVERICK AND GOOSE, WE CAN HANDLE BEING TOGETHER IN ONE CRAFT WITHOUT KILLING EACH OTHER AND WE CAN BE A LITTLE BIT UNORTHODOX IN OUR WAYS," SAYS KEVIN UYEDA IN HIS TYPICAL LIGHTHEARTED STYLE. THESE TOP GUNS KNOW HOW TO HAVE FUN.**

**-PAUL LEBOWITZ**



## **THE 2016 HOBIE FISHING TOP GUNS**

**JEFF ANDERSON, OREGON  
SHAWN BARHAM, CONNECTICUT  
BRANDON BARTON, FLORIDA  
QUINTON ECHOLS, OHIO  
LARRY LAUMANN, CALIFORNIA  
BRAD HOLE, WASHINGTON  
BENTON PARROTT, ALABAMA  
MATTHEW VANN, FLORIDA  
GARETH AND KEVIN UYEDA, HAWAII  
CHRISTINA WEBER, FLORIDA  
ROBERT WENDEL, WISCONSIN  
KEVIN WORKMAN, NEBRASKA**



# STEALTH CAM®

Digital Scouting Cameras

## STEALTH CAM® UNVEILS THE NEW G45NG PRO



STEALTH CAM®, INTRODUCED IN THE YEAR 2000, QUICKLY BECAME THE LEADER IN SCOUTING CAMERA INNOVATION. CONTINUING TO ADVANCE TECHNOLOGY TO THE NEXT LEVEL, THE G45NG PRO IS EVEN MORE COMPACT AND BUILT WITH SEVERAL DISTINGUISHING CAPABILITIES.

THE G45NG PRO IS 10% SMALLER THAN THE ORIGINAL G SERIES AND FEATURES A DULL MATTE FINISH CAMOUFLAGE PATTERN PROVIDING NO UNWANTED REFLECTIONS. NEW FOR 2016 IS AN ADJUSTABLE PIR RANGE THAT CAN BE CUSTOMIZED TO CAPTURE TARGETS AT SPECIFIED DISTANCES DAY OR NIGHT. NOW YOUR G PRO SERIES CAN TRIGGER OUT TO 100FT TO MATCH YOUR CAMERAS NIGHT TIME ILLUMINATION CAPABILITIES. ANOTHER USEFUL NEW FEATURE FOR 2016 IS SECURITY MODE (DVR MODE), WHICH INCORPORATES RE-WRITE TECHNOLOGY ON YOUR SD CARD. IF YOUR SD CARD WERE TO FILL UP, YOU HAVE THE CHOICE TO CHOOSE WHETHER OR NOT IT WILL RE-WRITE OVER THE OLDEST PICTURES OR VIDEOS ON THE CARD, KEEPING THE MOST CURRENT INFORMATION.

STEALTH CAM HAS HISTORICALLY BEEN A LARGE FACTOR IN SUCCESSFUL HUNTS WITH FEATURES INDIVIDUALS EXPECT TO FIND IN A SCOUTING CAMERA. BOTTOM LINE IS STEALTH CAMS PERFORMANCE AND RELIABILITY HELPS YOU BECOME A BETTER HUNTER IN THE FIELD. TO LEARN MORE ABOUT THE ALL NEW STEALTH CAM G PRO SERIES, EMAIL [KIM CAHALAN](mailto:KIM.CAHALAN@STEALTHCAM.COM) OR VISIT [WWW.STEALTHCAM.COM](http://WWW.STEALTHCAM.COM)

### G45NG PRO FEATURES:

- 14 MEGAPIXEL – ADJUSTABLE (14MP/8MP/6MP/2MP)
- 100FT INVISIBLE NIGHT TIME ILLUMINATION RANGE
- REFLEX™ TRIGGER LESS THAN 1/2 SECOND
- SECURITY MODE (RE-WRITE SD MEMORY)
- HD VIDEO RECORDING 5-180 SECONDS W/ AUDIO
- TIME LAPSE WITH PIR OVERRIDE
- 10% SMALLER THAN G SERIES
- PIR ADJUSTABLE RANGE OUT TO 100 FEET
- 45 NO GLO OR BLACK OUT IR EMMITERS
- INTUITIVE BACKLIT MENU PROGRAMING
- MATRIX™ ADVANCED BLUR REDUCTION
- RETINA™ LOW LIGHT SENSITIVITY
- 16:9 WIDE IMAGE RATIO
- QUICK SET PRE-PROGRAMMED OPTION
- BURST MODE 1-9 IMAGES PER TRIGGERING
- 5-59 SEC/ 1-59 MIN RECOVERY TIME OUT
- TIME/ DATE/ MOON PHASE/ TEMPERATURE/ NAME STAMP
- GEO-TAG GPS TAGGING
- MANUAL SHOT CAPABILITY
- SECURE LOCK PASSWORD PROTECTION
- SD CARD SLOT UP TO 32GB
- TEST MODE
- VIDEO & USB OUTPUT
- OPERATED ON 8 AA BATTERIES
- EXTERNAL POWER JACK FOR 12V BATTERY BOX
- ACTIVE TIME SETTING
- MULTI LINGUAL (ENGLISH/ FRENCH/ GERMAN/ SPANISH)
- PRESET TIME & DATE (CST)
- MSRP: \$199



## **GARMIN ADDS 21 ANGLERS TO ITS 2016 MARINE PRO TEAM**

GARMIN ANNOUNCED THE ADDITION OF 21 PROFESSIONAL FISHERMEN TO ITS 2016 MARINE PRO TEAM. THE TEAM OF MORE THAN 60 ANGLERS INCLUDES PROFESSIONAL BASS, WALLEYE, AND CRAPPIE FISHERMEN WHO WILL BE REPRESENTING GARMIN IN TOURNAMENT TRAILS ACROSS NORTH AMERICA, INCLUDING THE B.A.S.S. ELITE SERIES AND FLW TOUR.



THE 2016 GARMIN MARINE PRO TEAM IS BEING ANNOUNCED IN CONJUNCTION WITH A 360-DEGREE NATIONAL CAMPAIGN CALLED “SONS OF FISHES,” WHICH INCLUDES TELEVISION, PRINT, DIGITAL AND SOCIAL MEDIA EXECUTIONS THAT SHOW WHY SO MANY PROFESSIONAL ANGLERS ARE MAKING THE SWITCH TO GARMIN. THE PRIMARY REASON MEMBERS OF THIS “FISHING CLUB” ARE SWITCHING TO GARMIN IS BECAUSE OF ITS NEW REVOLUTIONARY PANOPTIX ALL-SEEING SONAR TECHNOLOGY THAT PROVIDES A REAL-TIME VIDEO-LIKE IMAGE OF THE BOTTOM, STRUCTURE AND FISH SWIMMING AROUND OR IN FRONT OF THE BOAT.

“OUR TEAM HAS MORE THAN DOUBLED IN SIZE IN JUST TWO YEARS,” SAID DAN BARTEL, GARMIN VICE PRESIDENT OF WORLDWIDE SALES. “IT’S AN IMPRESSIVE GROUP OF ANGLERS, ALL OF WHOM HAVE JOINED THE GARMIN TEAM BECAUSE THEY BELIEVE IT WILL GIVE THEM THE COMPETITIVE EDGE. GARMIN IS MORE COMMITTED THAN EVER TO BEING A TOP PLAYER IN THE FRESHWATER FISHING INDUSTRY, AND WE’RE SO EXCITED TO HAVE THE OPPORTUNITY TO BE A PART OF THEIR SUCCESS ON THE WATER.”

THE NEW GARMIN PRO ANGLERS INCLUDE: TODD AUTEN (B.A.S.S.), JOSH BERTRAND (B.A.S.S.), ZACK BIRGE (FLW), RAMIE COLSON (FLW), CHAD GRIGSBY (FLW), CHRIS JOHNSTON (FLW), CORY JOHNSTON (FLW), BRAD KNIGHT (FLW), RUSS LANE (B.A.S.S.), MATT LEE (B.A.S.S.), JARED LINTNER (B.A.S.S.), RICHARD LOWITZKI (FLW), MIKE MCCLELLAND (B.A.S.S.), CODY MEYER (FLW), CLIFF PRINCE (B.A.S.S.), TOM REDINGTON (FLW), MARK ROSE (FLW), JIM TUTT (FLW), GREG VINSON (B.A.S.S.), JOHN VOYLES (FLW), AND JAY YELAS (FLW).

THEY JOIN DOZENS OF WORLD-CLASS PROFESSIONAL FISHERMEN ALREADY RUNNING GARMIN ELECTRONICS, INCLUDING SCOTT MARTIN (2015 FLW ANGLER OF THE YEAR), BRENT CHAPMAN (2012 BASSMASTER ANGLER OF THE YEAR), JASON CHRISTIE (TWO-TIME ELITE SERIES CHAMPION), CLENT DAVIS (2012 FLW ROOKIE OF THE YEAR), GREG HACKNEY (2014 BASSMASTER ANGLER OF THE YEAR), JASON LAMBERT (2014 FLW ROOKIE OF THE YEAR), ANDY MORGAN (2013/14 FLW ANGLER OF THE YEAR), BASS FISHING’S ELDER STATESMAN AND AMBASSADOR, BILL DANCE, AND MANY MORE.

# BIG MOMMA GOT TAKEN DOWN BY THE *Cabela's* CREDENCE

**By CODY LEVY**

FERAL HOGS IN SOUTH TEXAS HAVE LONG SINCE BEEN KNOWN AS A NUISANCE THAT TEAR UP MANY LANDOWNER'S FENCES, FEEDERS, AND FIELDS, SO WHEN I GOT SOME DOWN TIME FOR AN EVENING OUT AT THE RANCH, I GRABBED MY CABELA'S CREDENCE BOW AND TWO GARMIN VIRBS AND WAS OFF TO FIND SOME BACON!

I WAS ABLE TO GET INTO THE STAND AROUND FOUR IN THE AFTERNOON WHICH LEFT ME ABOUT TWO HOURS OF GOOD HUNTING TIME. I SET UP TWO GARMIN VIRBS TO CAPTURE MY ENTIRE HUNT AND THEN WAITED FOR THE PIGS TO COME INTO RANGE. FOR THE FIRST HOUR AND A HALF, IT WAS A WHITETAIL PARADE. DOES, FAWNS, AND A COUPLE OF GOOD BUCKS CAME INTO RANGE, BUT THAT WASN'T WHAT I WAS AFTER. AFTER THE DEER LEFT, IT ONLY TOOK ABOUT FIVE MINUTES UNTIL I THOUGHT A HERD OF COWS WERE STAMPEDING THROUGH THE CREEK BED I WAS POSTED UP NEXT TO. THREE PIGS OVER 150 POUNDS CAME INTO RANGE WITH ROUGHLY TEN OTHER SMALLER HOGS.

THIS IS WHEN MY HEART STARTED PUMPING FAST. I KNEW THAT MY MOVEMENTS HAD TO BE SWIFT AND SILENT. I CLIPPED MY RELEASE ONTO THE LOOP OF MY BOW STRING AND GOT READY TO DRAW BACK. I WAITED UNTIL ONE OF THE SOWS WAS WHERE I HAD THE BEST SHOT AND WAS LOOKING AWAY AND SLOWLY DREW BACK.

ONCE I STEADIED MY ARMS AND PUT MY SIGHT RIGHT ON THE VITALS, I LET AN ARROW FLY AND NAILED HER! IT WAS A WEIGHT OFF MY SHOULDERS TO KNOW I MADE A GOOD SHOT AND IT FELT GREAT TO GET A BIG PIG DOWN AND TO KNOW THAT THE GARMIN VIRBS FILMED THE WHOLE THING! I DEFINITELY CANNOT WAIT TO BE SITTING IN THE STAND WITH MY CABELA'S CREDENCE AGAIN!





# Smith & Wesson®

## **SMITH & WESSON® INTRODUCES NEW M&P® 15-22 SPORT™**

SMITH & WESSON CORP. ANNOUNCED THAT IT HAS INTRODUCED THE NEW M&P15-22 SPORT, ITS MOST FEATURE-RICH M&P15-22 TO DATE. WHILE THE FIRST GENERATION M&P15-22 HAS BEEN WIDELY RECOGNIZED AS THE BEST .22 LR MODERN SPORTING RIFLE (MSR) ON THE MARKET, THE NEW RIFLE CARRIES THE "SPORT" NAME AND PREMIUM MAGPUL® ACCESSORIES AS STANDARD EQUIPMENT.

THE M&P15-22 SPORT FEATURES A 10-INCH M&P SLIM HANDGUARD THAT INCORPORATES THE POPULAR MAGPUL M-LOK™ SYSTEM. THE M-LOK SYSTEM ALLOWS RIFLE OWNERS TO EASILY CUSTOMIZE THEIR M&P15-22 SPORT BY ADDING ACCESSORIES WITHOUT REMOVING THE HANDGUARD. M&P15-22 SPORT OWNERS HAVE THE OPTION OF EASILY MOUNTING NUMEROUS M-LOK-COMPATIBLE ACCESSORIES OR ANY NUMBER OF PICATINNY-STYLE RAIL SECTIONS DESIGNED TO ACCOMMODATE OTHER ACCESSORIES. SMITH & WESSON INCLUDES A 2-INCH M-LOK RAIL PANEL WITH EACH RIFLE.

THE M&P15-22 SPORT COMES STANDARD WITH ONE OF THE MOST POPULAR FOLDING SIGHTS SYSTEMS AVAILABLE FOR MSRs. THE REMOVABLE MAGPUL MBUS® FRONT AND REAR FOLDING SIGHTS ARE LIGHTWEIGHT AND DURABLE, FURTHER ENHANCING THE PERFORMANCE AND VALUE OF THE NEW M&P15-22 SPORT.

IN ADDITION TO THE STANDARD MATTE BLACK OFFERING, THE M&P15-22 SPORT COMES IN TWO OF THE MOST POPULAR COLOR OPTIONS ON THE MARKET - KRYPTEK® HIGHLANDER™ AND MOON SHINE'S MUDDY GIRL® CAMO.

THE M&P15-22 SPORT WILL ALSO BE AVAILABLE IN A PERFORMANCE CENTER® EXCLUSIVE EDITION FEATURING AN ENHANCED TWO-STAGE MATCH TRIGGER, MATCH GRADE PRECISION 18-INCH THREADED BARREL AND MATCH GRADE CHAMBER. THE PERFORMANCE CENTER MODEL IS ALSO STANDARD WITH A VLTOR® ADJUSTABLE STOCK AND HOGUE® GRIP.

"BY STARTING WITH THE MARKET LEADING M&P15-22 RIFLE AND BUILDING IN ENHANCED STANDARD FEATURES AND VALUE, WE NOW OFFER CONSUMERS THE OPPORTUNITY TO OWN A NEW, SUPERIOR RIMFIRE MODERN



SPORTING RIFLE," SAID JAN MLADEK, GENERAL MANAGER OF THE SMITH & WESSON AND M&P BRAND. "THE NEW M&P SLIM HANDGUARD WITH M-LOK ALLOWS THE RIFLE TO BE EASILY ACCESSORIZED WHILE ADDING TO ITS COMFORT DURING SHOOTING. THIS NEW COMPONENT ALONG WITH THE RIFLE'S STANDARD HIGH-QUALITY FEATURES, ALLOW THE M&P15-22 SPORT TO BE READY FOR A DAY AT THE RANGE RIGHT OUT OF THE BOX."

THE M&P15-22 SPORT BASE MODEL HAS AN MSRP OF \$449 AND IS SOLD WITH A LIMITED LIFETIME WARRANTY AND A LIFETIME SERVICE POLICY.

**SMITH & WESSON INTRODUCES  
NEW M&P 15-22 SPORT**



# STUFFED VENISON BACKSTRAP

## INGREDIENTS

### GRAVY

1 ONION – DICED (ANY COLOR WILL DO)  
3 TABLESPOONS OLIVE OIL  
1/2 TEASPOON SALT  
1/2 COARSE GROUND BLACK PEPPER  
6 CUPS BEEF STOCK  
1 BOTTLE RED WINE  
1/2 CUP BUTTER  
1/2 CUP FLOUR  
1 CAN DICED TOMATOES  
6 SLICES BACON COOKED AND CRUMBLED

### MEAT

CABELA'S ALL-PURPOSE SEASONING  
1/2 GALLON MILK  
SOY SAUCE  
BROWN SUGAR  
VENISON BACKSTRAP  
1 CUP GOAT CHEESE  
1 BLOCK CREAM CHEESE  
6 PIECES BACON

### DIRECTIONS

1. SOAK BACKSTRAP IN MILK AND ALL-PURPOSE SEASONING IN THE REFRIGERATOR OVERNIGHT.
2. TAKE MEAT OUT OF MILK AND SOAK IN SOY SAUCE AND BROWN SUGAR FOR 2-3 HOURS.
3. SAUTÉ ONIONS IN OLIVE OIL UNTIL TRANSLUCENT, SEASON WITH SALT AND PEPPER AND SET ASIDE.
4. COMBINE WINE AND BEEF BROTH IN LARGE PAN AND BRING TO A BOIL. COVER AND SIMMER UNTIL IT HAS REDUCED BY HALF. ONCE REDUCED, STIR IN TOMATOES, CRUMBLED BACON AND ONIONS AND CONTINUE TO SIMMER.
5. TAKE THE BACKSTRAP AND PAT IT DRY AND SEASON WITH ALL-PURPOSE SEASONING.
6. MIX CREAM CHEESE AND GOAT CHEESE UNTIL SMOOTH.
7. CUT A POCKET THE LENGTH OF THE BACKSTRAP AND STUFF WITH CHEESE MIXTURE.
8. WRAP BACKSTRAP WITH BACON AND SEAR BACKSTRAP ON ALL SIDES UNTIL BACON IS CRISPY.
9. TRANSFER MEAT INTO A 350-DEGREE OVEN AND BAKE FOR 15-20 MINUTES.
10. MIX BUTTER AND FLOUR TO FORM A PASTE AND WHISK INTO GRAVY AND SIMMER TO DESIRED THICKNESS.
11. AFTER RESTING THE MEAT FOR A FEW MINUTES, SLICE AND SERVE WITH GRAVY AND ENJOY.



**Cabela's**®





# YAMAHA

FOR A CHANCE TO  
*Share a pic.* **WIN A TRIP**  
to the Bassmaster Classic®

#YamahaClassicContest



FOR A LIMITED TIME, UPLOAD YOUR CLASSIC BOATING AND FISHING MEMORIES TO FACEBOOK®, TWITTER®, OR INSTAGRAM® USING #YAMAHACLASSICCONTEST FOR A CHANCE TO WIN A TRIP TO THE 2016 BASSMASTER CLASSIC® AND HAVE DINNER WITH YAMAHA PRO ANGLERS. ENTER TODAY! NO PURCHASE NECESSARY.

[CLICK HERE FOR OFFICIAL RULES.](#)



Presented By  
**GARMIN.**

# FIND US ON FACEBOOK!

facebook [Sign Up](#)

Email or Phone

Password

Keep me logged in

[Forgot your password?](#)



[Timeline](#) [About](#) [Join our Email List](#) [Photos](#) [More](#)

PEOPLE

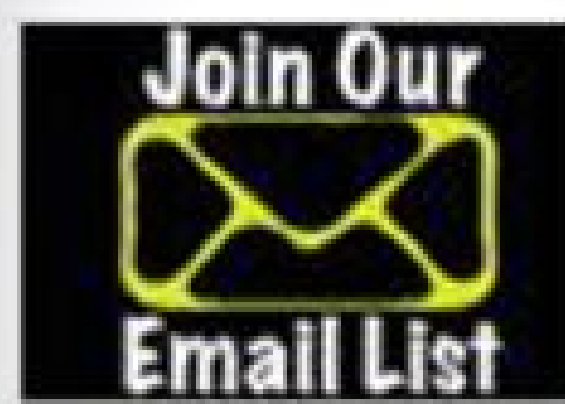
39,666 likes

ABOUT

Genre: Fishing & Hunting

<http://www.americanaoutdoors.com/>

APPS



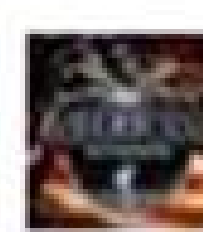
Join our Email List

YOUTUBE TAB

YouTube



Sweepstakes!



Americana Outdoors shared Wade Middleton's post.

4 hrs · Edited

What do you guys think about Wade's new toy?? Yamaha Outdoors



# 'LIKE' THE AMERICANA OUTDOORS FACEBOOK PAGE FOR MORE OUTDOOR NEWS, TIPS, AND WEEKLY GIVEAWAYS!

Presented By

**GARMIN.**

**SAFETY TIPS FOR**



**BoatU.S.**

## **BOAT LIGHTING FROM THE BOATUS FOUNDATION**

### **US COAST GUARD CAUTIONS USE OF SOME NEW TYPES OF LIGHTS**

ANNAPOLIS, MD,— WITH THE LATEST TECHNICAL ADVANCES IN RECREATIONAL BOAT LIGHTS — BOTH FOR NAVIGATION AND AESTHETIC PURPOSES — RECREATIONAL BOATERS HAVE MORE CHOICES THAN EVER WHEN UPGRADING THEIR BOAT'S LIGHTING. HOWEVER, THE US COAST GUARD WANTS BOATERS TO KNOW THAT SOME OF THE NEW LIGHTS AREN'T UP TO SNUFF AND COULD INCREASE THE CHANCES OF A COLLISION. IT HAS FOUND THAT SOME SOLD FOR NAVIGATION PURPOSES DON'T MEET REGULATIONS, AND OTHER AESTHETIC LIGHTING PRODUCTS SUCH AS LED ROPES AND UNDERWATER LIGHTS MAY GO AGAINST THE LIGHT PROVISIONS OF THE NAUTICAL RULES OF THE ROAD. THE BOATUS FOUNDATION FOR BOATING SAFETY AND CLEAN WATER SHARES THESE CONCERNS HAS THESE THREE TIPS WHEN SHOPPING FOR OR INSTALLING BOAT LIGHTS:



1) NAVIGATION LIGHTS HAVE TO BE "APPROVED". SOME MANUFACTURERS ARE SELLING NAVIGATION LIGHTS THAT DON'T MEET REGULATIONS. THESE LIGHTS ARE TYPICALLY CHEAPER, BUT DO NOT PROVIDE THE PROPER COLOR QUALITY, BRIGHTNESS OR CUT-OFF ANGLES THAT BOATERS RELY ON TO AVOID COLLISION. SO HOW DO YOU KNOW YOU ARE BUYING A GOOD NAV LIGHT? THE US COAST GUARD (USCG) SAYS THINGS TO LOOK FOR INCLUDE 1.) USCG APPROVAL, 2.) THE RATED VISIBILITY OF THE LIGHT IN NAUTICAL MILES, 3.) MEETS ABYC A-16, 4.) "TESTED BY: LABORATORY NAME," ALONG WITH 5.) MANUFACTURER AND MODEL #.

2) DON'T LET YOUR BOAT'S LIGHTS CONFUSE. THE USCG REPORTS THAT SOME BOATERS HAVE HAZARDOUSLY INSTALLED UNAPPROVED RED AND GREEN LED STRIP LIGHTING ON THE BOW, WHICH HAMPERS OTHER BOATERS EFFORTS TO AVOID COLLISION. ALSO AVOID DISPLAYING ANY LIGHT THAT COULD BE CONFUSED AS ANOTHER NAVIGATION LIGHT OR ANOTHER VESSEL. AND DO REMEMBER FLASHING BLUE LIGHTS ARE RESERVED FOR LAW ENFORCEMENT — AT A DISTANCE, WAVE ACTION COMBINED WITH THE STEADY ROCKING OF BELOW THE WATERLINE HIGH-INTENSITY BLUE LIGHTS CAN GIVE THE APPEARANCE OF A POLICE VESSEL.

3) DON'T INSTALL LIGHTS THAT PREVENT THE OPERATOR FROM MAINTAINING A GOOD LOOKOUT. WHEN RUNNING BETWEEN SUNSET AND SUNRISE, IT'S CRITICAL THAT THOSE BEHIND THE WHEEL MAINTAIN THEIR NIGHT VISION, SO THE #1 GOAL IS TO KEEP LIGHT OUT OF THE OPERATOR'S EYES. GLARE FROM EXISTING NAV LIGHTS MAY BE A PROBLEM, OR REFLECTIONS FROM AESTHETIC LIGHTING SUCH AS LED ROPE LIGHTS WRAPPED AROUND A HELM STATION HINDER EYESIGHT.

TO SEE LIGHTS TESTED AT NIGHT BY THE BOATUS FOUNDATION, VISIT [BoatUS.org/findings/48](http://BoatUS.org/findings/48).



## YAMAHA LAUNCHES 2016 NATIONAL HUNTING AND FISHING DAY SWEEPSTAKES

### ALL-NEW KODIAK 700 ATV TO BE GIVEN AWAY IN SUPPORT OF NHF DAY

YAMAHA MOTOR CORP., USA, THE INDUSTRY LEADING MANUFACTURER OF ATV AND SIDE-BY-SIDE (SXS) VEHICLES FOR OUTDOORSMEN AND WOMEN, IS SUPPORTING THE NATIONAL HUNTING AND FISHING DAY (NHF DAY) AGAIN IN 2016, THIS YEAR GIVING AWAY THE ALL-NEW YAMAHA KODIAK 700 ATV WITH ELECTRIC POWER STEERING (EPS) THROUGH AN ONLINE SWEEPSTAKES AT [WWW.YAMAHAOUTDOORS.COM/NHFDAY](http://WWW.YAMAHAOUTDOORS.COM/NHFDAY).

THIS IS THE NINTH YEAR YAMAHA IS SPONSORING NHF DAY AND WORKING TO RAISE FUNDS AND AWARENESS THROUGH THE ASSEMBLED IN USA KODIAK 700 SWEEPSTAKES. THE GIVEAWAY IS BEING PROMOTED ONLINE AND AT NHF DAY EVENTS NATIONWIDE. OUTDOORSMEN AND WOMEN, 18-YEARS-OF-AGE OR OLDER, CAN ENTER TO WIN BY SIMPLY REGISTERING ONLINE THROUGH THE END OF OCTOBER 2016.

“EVERYONE AT YAMAHA IS PROUD TO CONTINUE OUR SUPPORT OF NHF DAY AND ITS MISSION BY GIVING AWAY AN ALL-NEW KODIAK 700 ATV,” SAID STEVE NESSL, MARKETING MANAGER FOR YAMAHA’S ATV/SXS GROUP. “PARTNERING WITH KEY ORGANIZATIONS LIKE NHF DAY IS INTEGRAL TO YAMAHA’S CONSERVATION EFFORTS AND OUTREACH TO OUTDOOR RECREATIONAL ENTHUSIASTS, AND THIS BEING OUR NINTH YEAR FURTHERS THAT POINT.”

NHF DAY SERVES AS THE MOST EFFECTIVE GRASSROOTS EFFORT EVER TAKEN TO PROMOTE OUTDOOR SPORTS AND CONSERVATION. YAMAHA, THROUGH ITS RELATIONSHIPS WITH ORGANIZATIONS SUCH AS DUCKS UNLIMITED, ROCKY MOUNTAIN ELK FOUNDATION, SAFARI CLUB INTERNATIONAL, BUCKMASTERS, TREAD LIGHTLY!, NATIONAL WILD TURKEY FEDERATION AND NHF DAY, AMONG OTHERS, IS A CONTINUED SUPPORTER OF CONSERVATION EFFORTS FOR OUTDOOR RECREATIONAL ENTHUSIASTS. SCHEDULED ANNUALLY ON THE FOURTH SATURDAY OF SEPTEMBER, THIS YEAR THE CELEBRATION OF HUNTING, FISHING AND CONSERVATION IS SET FOR SEPTEMBER 24TH.

"WE'RE DELIGHTED TO HAVE YAMAHA AS AN IMPORTANT SUPPORTER OF NHF DAY FOR ALMOST A DECADE NOW," SAID MISTY MITCHELL, DIRECTOR OF CONSERVATION PROGRAMS FOR AMERICA'S WILDLIFE MUSEUM AND AQUARIUM IN SPRINGFIELD, MO. — THE OFFICIAL HOME OF NATIONAL HUNTING AND FISHING DAY. "I'M EXCITED FOR NHF DAY ENTRANTS THIS YEAR, AS THE ALL-NEW KODIAK 700 IS AN ATV THAT'S GREAT FOR THE OUTDOORS, AND WE'RE LOOKING FORWARD TO ANOTHER INCREDIBLE TURN-OUT ON THE ONLINE SWEEPSTAKES AND AT OUR EVENTS IN SEPTEMBER."



ONE LUCKY ENTRANT, 18 YEARS-OF-AGE OR OLDER, WILL WIN A 2016 YAMAHA KODIAK 700 EPS IN HUNTER GREEN, A VEHICLE ASSEMBLED IN USA FEATURING CLASS-LEADING PERFORMANCE AND VALUE FOR THE HARD-WORKING UTILITY ATV CUSTOMER. TOTAL APPROXIMATE RETAIL VALUE IS \$8,199. NO PURCHASE NECESSARY. SWEEPSTAKES ENDS 11:59 PM PACIFIC STANDARD TIME ON OCTOBER 31, 2016. WINNER WILL BE DETERMINED BY RANDOM DRAWING.

FOR MORE INFORMATION ON NATIONAL HUNTING AND FISHING DAY, VISIT [WWW.NHFDAY.ORG](http://www.nhfd.org). COMPLETE RULES, ENTRY DETAILS AND ADDITIONAL INFORMATION ARE AVAILABLE BY VISITING [WWW.YAMAHAOUTDOORS.COM/NHFDAY](http://www.yamahaoutdoors.com/nhfd). FOLLOW YAMAHA OUTDOORS AT [WWW.FACEBOOK.COM/YAMAHAOUTDOORS](http://www.facebook.com/yamahaoutdoors), [WWW.TWITTER.COM/YAMAHAOUTDOORS](http://www.twitter.com/yamahaoutdoors) OR [WWW.INSTAGRAM.COM/YAMAHAOUTDOORS](http://www.instagram.com/yamahaoutdoors). #YAMAHAKODIAK700 #YAMAHA #YAMAHAOUTDOORS

#### ABOUT YAMAHA MOTOR CORP., USA

YAMAHA MOTOR CORPORATION, USA, (YMUS) A LEADER IN THE MOTORSPORTS MARKET, MAKES THE TOUGHEST, MOST CAPABLE AND VERSATILE ATV AND SIDE-BY-SIDE VEHICLES. THE COMPANY'S EVER-EXPANDING PRODUCT OFFERINGS ALSO INCLUDE MOTORCYCLES, OUTBOARD MOTORS, PERSONAL WATERCRAFT, SNOWMOBILES, BOATS, OUTDOOR POWER EQUIPMENT, ACCESSORIES, APPAREL AND MUCH MORE. YMUS PRODUCTS ARE SOLD THROUGH A NATIONWIDE NETWORK OF DEALERS IN THE UNITED STATES.

HEADQUARTERED IN CYPRESS, CALIF., SINCE ITS INCORPORATION IN 1976, YAMAHA ALSO HAS FACILITIES IN WISCONSIN AND GEORGIA, AS WELL AS FACTORY OPERATIONS IN TENNESSEE AND GEORGIA. FOR MORE INFORMATION ON YAMAHA, VISIT [WWW.YAMAHAMOTORSPORTS.COM](http://www.yamahamotorsports.com).



# YAMAHA



Presented By  
**GARMIN.**

# THE TOOL SHED

CHECK OUT SOME OF THE GEAR USED  
BY THE AMERICANA OUTDOORS STAFF!



**GILL COASTAL RACER JACKET**



**CABELA'S ARACHNID™  
BAITCASTING REEL**



**CABELA'S MEAN EYE  
JERKBAIT**



**CABELA'S MEN'S  
TACTICAL TAT'R™  
KICKSTAND TURKEY  
VEST**



**TRIVIZ FRONT AND REAR  
SHOTGUN SIGHT WITH  
REMOVABLE FRONT BEAD**



**T/C ENCORE® PRO  
HUNTER™ TURKEY  
CAMO SINGLE SHOT**

# Watch Americana Outdoors on These Great Networks!



Brought to you by

