



SPRING 2018



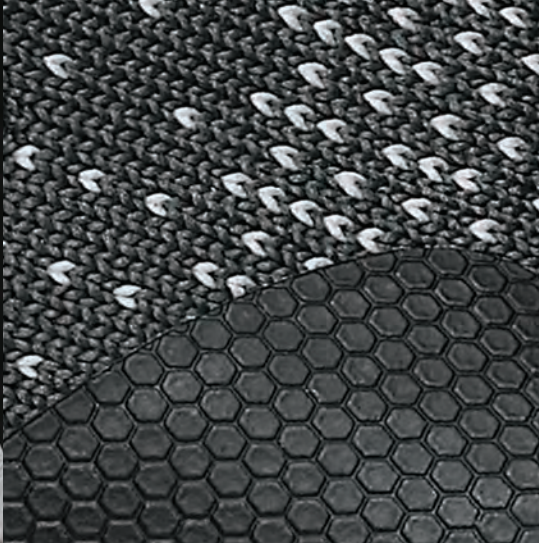








WADE DESARMO



DEMARQUIS MCDANIELS

# DESIGN COMMUNITY SKATEBOARDING



TOM ASTA



# FOOTWEAR CATEGORIES

## S-SERIES

The most advanced innovative collection of éS footwear that combines form and function with a strong focus on performance.

## A-SERIES

The progressive but accessible collection rooted in the rich heritage of éS.

## R-SERIES

Classic éS design brings together timeless function and style.

# TECHNICAL OVERVIEW

éS footwear is tested by our riders at our STI lab to ensure true skate function and comfort. Every detail, down to the micro millimeter, is considered to create the best footwear and skate experience possible.

At éS we don't believe that "good enough" is ever good enough - we strive for perfection everyday.



Single piece knit upper with maximum durability



STI Energy™ Foam Insoles for maximum impact and energy return



THERMOTHANE® toe cap for greater abrasion protection



Premium suede upper: High quality suede made for skateboarding



Hidden lace loops



Centralized Tongue straps for snug fit



400 NBS Gum rubber outsole to last longer



Natural rubber outsole design for maximum grip and flexibility



Micro suede inner collar for proper heel hold

# FOOTWEAR TREADS







# SWIFT 1.5 TECHNOLOGY

## TREAD

This unique tread design provides excellent grip, flex and mobility to align the foot positioning for more consistent riding experience.

## EVA FOAM MIDSOLE

Features a low profile, Lightweight Die Cut EVA Midsole for cushioning, board feel and impact protection.

## STI ENERGY™ FOAM INSOLE

Provides enhanced rebound, supreme comfort and excellent board feel.

## UPPER

A combination of durable suede, THERMOTHANE toe cap, reinforced heel counter, breathable mesh, and lycra tongue straps creates a high performance upper.











**DESIGN .5**  
**HERITAGE .5**  
**INNOVATION .5 +**  

---

**SWIFT 1.5**



S-SERIES



# SWIFT 1.5

5101000158 | Available in sizes: 5-14

The NEW SWIFT 1.5 is Inspired by our rich 90's tech heritage and is fully loaded with function and style. The iconic silicone éS "Accent" on the ollie area connects deeply with a whole generation of skateboarders that understand the éS story of innovation, progression and style. The Swift 1.5 will continue the éS legacy of taking skateboarding to new, unknown levels.

- \_ Inspired by éS heritage
- \_ Hidden lace loops
- \_ Thermothane toe cap
- \_ Silicone embossed accent for added durability and lace protection
- \_ Lycra spandex tongue straps
- \_ STI molded Energy Foam footbed
- \_ Embroidered éS quarter logo
- \_ Mesh quarter panel and tongue for breathability

#eS\_SWIFT\_1.5







**NAVY / GREY / WHITE 416** | Suede, Textile, Synthetic



**BLACK / GUM 964** | Suede, Textile, Synthetic

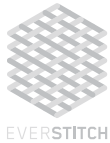


**LIGHT GREY 050** | Suede, Textile, Synthetic





S-SERIES



# SWIFT EVERSTITCH

5101000157 | Available in sizes: 5-14

NEW STI Everstitch technology has been added to the already highly demanded SWIFT. This NEW skateable knit technology is extremely light, breathable, and long lasting; Plus, this shoe is animal friendly for all our vegan friends out there. The STI Thermothane toe piece increases durability and provides the perfect flick. Be prepared to take your skating to a new level.

- \_ Custom knitted upper
- \_ Molded TPR top eyelet
- \_ Thermothane toe cap
- \_ Molded STI Energy Foam Footbed
- \_ EVA sandwich tongue mesh for breathability
- \_ Die cut EVA midsole
- \_ 400NBS rubber outsole

#eS\_SWIFT\_EVERSTITCH







**BLACK / WHITE / RED 978** | Textile, Synthetic



**NAVY 401** | Textile, Synthetic | H017 C/O









# FORM + FUNCTION

INTRODUCING THE **SQUARE THREE**

PREMIUM SUEDE | DUAL LACING SYSTEM | TONGUE STRAP

KELLY HART



S-SERIES



# SQUARE THREE

5101000159 | Available in sizes: 5-14

The New SQUARE THREE is perfection when it comes to skate shoes. With the style details of the Square 1 and Square 2 blended together this shoe has quickly become a éS team rider (and employee) favorite! Simple yet effective in pushing your skating and style above and beyond.

- \_ Inspired by both the Square One and Square Two
- \_ Vulcanized construction for board feel
- \_ Hidden lace loops
- \_ Clean toe for the perfect flick
- \_ Elastic tongue straps
- \_ STI molded Energy Foam footbed
- \_ Micro fleece inner heel panel for comfort

#eS\_SQUARE\_THREE







**RED 600** | Suede, Synthetic



**GREY / GUM 367** | Suede, Synthetic



**BLACK / WHITE / RED 978** | Suede, Synthetic



**NAVY / GREY 407** | Suede, Synthetic





A-SERIES



# ARC

5101000152 | Available in sizes: 5-14

Simplicity, function and beauty combined. The ARC features unique Thermothane perforation dots around toe to improve durability, flick, and style. STI Energy Foam insoles provide amazing rebound and supreme comfort to boost performance of this vulcanized style to new levels.

- \_ Vulcanized construction for boardfeel
- \_ THERMOTHANE toe cap
- \_ Die Cut STI Energy Foam Footbed
- \_ 400NBS rubber cupssole outsole
- \_ Clean toe for the perfect flick
- \_ Elastic tongue straps
- \_ Micro fleece inner heel panel for comfort

#eS\_ARC





**BLUE 400** | Suede, Canvas



**BLACK / DARK GREY 560** | Suede, Canvas



**TAN 260** | Suede, Canvas





ACC



ACCEL SLIM





# ELENCE



## THE ACCEL COLLECTION

There's only a handful of shoes in the history of skateboarding that are considered game changers - the éS ACCEL has been a game changer from day one. Being in the original éS collection in 1995, this iconic style has stood the test of time. For over 20 years, top pro's and amateurs have helped to take skateboarding to new standards wearing the ACCEL. Today, we've added to the éS ACCEL family to build on it's rich legacy and continue to take skateboarding to new levels of innovation, style, and fun.



ACCEL OG



ACCEL SLIM MID





R-SERIES



# ACCEL SLIM MID

5101000147 | Available in sizes: 5-14

The Accel Slim Mid provides snug ankle support and good looks. A perfect all around shoe with excellent boardfeel, durability, and comfort. Try some and take your skating to the next level.

- \_ Mid Top construction for ankle support
- \_ 400 NBS rubber cupsole outsole
- \_ Lycra Spandex tongue straps
- \_ Egg Crate midsole construction
- \_ Molded STI Energy Foam Footbed
- \_ Minimal Tongue and Collar padding
- \_ Breathable tongue mesh

#eS\_ACCEL\_SLIM\_MID





*Tom Asta*

**WHITE / GUM 104** | Suede / Synthetic



**BLACK / GREY / RED 576** | Suede / Synthetic



R-SERIES



# ACCEL SLIM

5101000144 | Available in sizes: 5-14

The Accel Slim has rapidly become the most requested shoe for the new generation of skaters. As a refined version of the Accel OG it is a perfect all around shoe with excellent boardfeel, durability, and comfort. Try some and take your skating to the next level.

- \_ Lycra Spandex tongue straps
- \_ Molded STI Energy Foam Footbed
- \_ Minimal Tongue and Collar padding
- \_ Breathable tongue mesh
- \_ 400 NBS rubber cupssole outsole
- \_ Egg Crate midsole construction

#eS\_ACCEL\_SLIM





*Tom Asta*

**BLUE / WHITE 442** | Suede, Synthetic, Mesh



*Wade*

**WHITE / WHITE / GUM 105** | Suede, Textile



**DARK GREY / BLUE 061** | Suede, Textile



**KHAKI 255** | Suede, Textile



**BLACK / WHITE / RED 978** | Synthetic



**BURGUNDY / GUM 610** | Suede, Textile



**BLACK / GUM 964** | Suede, Textile | FA17 C/O



R-SERIES



# ACCEL OG

5101000139 | Available in sizes: 5-14

Standing the test of time, the Accel OG is the most iconic and respected skate shoe in the world. Worn by the greatest skateboarders, the Accel OG continues to progress skateboarding to new levels of innovation.

- \_ Padded tongue and collar foam
- \_ Elastic tongue straps
- \_ Die Cut STI Energy foam insoles
- \_ Die Cut EVA midsole
- \_ 400 NBS rubber cupssole outsole

#eS\_ACCEL\_OG





**CHOCOLATE / GUM 247** | Suede, Textile



**BLACK 001** | Suede | C/O



**BROWN / GUM 212** | Suede | C/O



R-SERIES



# SLB MID

5101000153 | Available in sizes: 5-14

Simplicity, function and beauty combined. The ARC features unique THERMOTHANE perforation dots around toe to improve durability, flick, and style. STI Energy Foam insoles provide amazing rebound and supreme comfort to boost performance of this vulcanized style to new levels.

- \_ Mid Top construction for ankle support
- \_ Breathable tongue mesh
- \_ Neoprene inner sock for superior fit
- \_ 400 NBS rubber solesole outsole
- \_ Signature SLB rubber shield on tongue
- \_ Egg Crate midsole construction
- \_ Molded STI Energy Foam Footbed
- \_ Minimal Tongue and Collar padding

#eS\_SLB\_MID





**WHITE / RED 170** | Suede, Synthetic



**BLACK / GUM 964** | Suede, Synthetic



R-SERIES



# SLB '97

5101000155 | Available in sizes: 5-14

The SLB 97 is one of the most demanded styles for éS from skateboarders around the world. This 3rd signature designed shoe from the legendary Sal Barbier, helped to push skate footwear design and style to create new a new direction for skate footwear.

- \_ THERMOTHANE® toe cap
- \_ EVA sandwich tongue mesh for breathability
- \_ Molded STI Energy Foam Footbed
- \_ Lycra spandex tongue straps
- \_ Signature SLB rubber shield on heel
- \_ Anatomically placed Achilles foam pads on inner collar
- \_ 400NBS rubber outsole

#eS\_SLB\_97





**DARK GREY / GREY 063** | Suede, Synthetic



**BLACK / BLACK / GUM 544** | Suede, Synthetic





## STI ENERGY™ FOAM INSOLE

**200%**

Energy Return (Fixed Load)

**40%**

Lighter than regular EVA



### STI ENERGY™ FOAM INSOLE

STI Energy™ Foam insoles provide enhanced rebound, supreme comfort and excellent board feel.

Sold as pack of 6 =

1 Small: 7-8

2 Large: 10-11

2 Medium: 8.5-9.5

1 XLarge: 11.5-13

516000006 | Red 600







JUAN MORENO



# FOOTWEAR OVERVIEW

## S-SERIES

The most advanced innovative collection of éS footwear that combines form and function with a strong focus on performance.

SWIFT 1.5 | 5101000158



NAVY / GREY / WHITE 416

SWIFT EVERSTITCH | 5101000157



BLACK / WHITE / RED 978



BLACK / GUM 964



NAVY 401 H017 C/O



LIGHT GREY 050

## A-SERIES

The progressive but accessible collection rooted in the rich heritage of éS.

SQUARE THREE | 5101000159



RED 600

ARC | 5101000152



BLUE 400



GREY / GUM 367



BLACK / DARK GREY 560



BLACK / WHITE / RED 978



TAN 260



NAVY / GREY 407



## R-SERIES

Classic éS design brings together timeless function and style.

ACCEL SLIM MID | 5101000147



WHITE / GUM 104

ACCEL SLIM | 5101000144



BLUE / WHITE 442

ACCEL OG | 5101000139



CHOCOLATE / GUM 247

SLB MID | 5101000153



WHITE / RED 170

SLB '97 | 5101000155



DARK GREY / GREY 063



BLACK / GREY / RED 576



WHITE / WHITE / GUM 105



BLACK 001 C/O



BLACK / GUM 964



BLACK / BLACK / GUM 544



DARK GREY / BLUE 061



BROWN / GUM 212 C/O



KHAKI 255



BLACK / WHITE / RED 978



BURGUNDY / GUM 610



BLACK / GUM 964 FA17 C/O



**APPAREL**











## PACKABLE ANORAK

5130001826 | BLACK 001 | S, M, L, XL

- \_ 100% nylon shell
- \_ Packs into front pouch
- \_ Reflective gel print
- \_ Custom label



## SCRIPT PO

5130001808 | BLACK 001 / HEATHER 043 / BLUE - HEATHER 843 | S, M, L, XL

- \_ 80% cotton 20% poly pullover fleece
- \_ Screen-printed artwork
- \_ Contrast hood lining
- \_ Contrast drawcords
- \_ Contrast enamel embellishments
- \_ Custom label



## SCRIPT CREW

5130001820 | GREY / HEATHER 043 | S, M, L, XL

- \_ 80% cotton 20% poly crewneck fleece
- \_ Screen-printed artwork
- \_ Contrast neck tape
- \_ Custom label



## MID SCRIPT TECH TEE

5130001827 | WHITE 100 / BLACK 001 / GREY HEATHER 043 / ROYAL 430 / RED 600 | S, M, L, XL

- \_ 65% cotton 35% polyester
- \_ Screen-printed artwork
- \_ Anti-Microbial moisture wicking
- \_ Custom label



## TECH SCRIPT CAP

5140000856 | BLACK 001 | ONE SIZE

- \_ Tech fabric moisture wicking
- \_ Fully tech seams
- \_ Reflective Screen-print
- \_ Laser cut eyelets
- \_ Clip closure



## SCRIPT SNAPBACK CAP

5140000857 | GREY HEATHER 043 | BLACK/RED 595 | RED 600 | ONE SIZE

- \_ 5 Panel Snapback Hat
- \_ 60% Cotton Twill 40% Polyester
- \_ 3D embroidered script Logo
- \_ Custom Clamp Label at Rear Closure



## BLOCK BEANIE

5140000648 | GREY HEATHER 043 | BLACK 001 | ROYAL 430 | CAMEL 256 | ONE SIZE

- \_ 95% Acrylic 5% Spandex Cuff Beanie
- \_ Custom Woven Clamp Label at Cuff
- \_ 6 Gauge



## NO SHOW SOCK

5140001855 | BLACK 001 | ONE SIZE

- \_ 80% Cotton / 15% Nylon / 5% Spandex sock.



## eS SKATE BAG

5140000861 | BLACK 001 | ONE SIZE

- \_ 100% Polyester 600D with PU backing
- \_ Web Straps
- \_ Zipper Pockets
- \_ Velcro Cinching
- \_ eS Custom Labels
- \_ Screen-Printed Art



# ACCESSORIES AND P.O.P



## COFFEE MUG

567000188 | RED 600 | 6 PACK

\_ 11 oz. Two-Tone Ceramic Mug.



## SLAT WALL SHELF

5670000182 | ONE SIZE

\_ Material: Acrylic



## BLOCK BANNER

5670000183 | RED 600

\_ Vinyl 22" x 33.5"



## ÉS LOGO DIE-CUT STICKER

3" 5140001850 | 5" 5140001851 | RED 600 / WHITE 100

\_ Available in 3" and 5" wide  
\_ 25 pack per colorway  
\_ Die-cut sticker



## BLOCK STICKER

5670000190 | RED 600

\_ Vinyl sticker 3" wide by 4" high  
\_ 25 pack



## G.O.S MEDALS

CONTACT MARKETING



## G.O.S VINYL ROLL

5670000191

\_ 3" X 100'



## G.O.S SHIELD STICKER

5670000192 | 5" | 5670000193 | 2.5"

\_ 25 PACK

és SKATE BAG





DESIGN  FUTURE

[eSSKATEBOARDING.COM](http://eSSKATEBOARDING.COM) | [@eSskateboarding](https://www.instagram.com/@eSskateboarding)

