

speakout

FEBRUARY 2016

2015
the year
in *review*

NATIONAL CONFERENCE SET TO 'MAKE WAVES' IN PERTH WA

Registration details &
program overview p13

SPEECH PATHOLOGY 2030 TAKES OFF

SPA UPDATE ON QUALITY AND SAFETY REGULATION

ALSO INSIDE

SPA SOCIAL SCENE, RESEARCH GRANTS ANNOUNCED, PROFESSIONAL SUPPORT

Speech Pathology Australia

National Office

Level 1/114 William Street Melbourne VIC 3000
T 1300 368 835 F 03 9642 4922
E office@speechpathologyaustralia.org.au

Chief Executive Officer

Gail Mulcair
T 03 9642 4899 E execassist@speechpathologyaustralia.org.au

Speech Pathology Australia Board

Gaenor Dixon – President
Robyn Stephen – Vice President Communications
Belinda Hill – Vice President Operations
Chyrisse Heine – Director
Tim Kittel – Director
Brooke Sanderson – Director
Asher Verheggen – Director

Follow Speech Pathology Australia via:



<https://www.facebook.com/SpeechPathologyAustralia>



<https://twitter.com/SpeechPathAus>



<http://instagram.com/speechpathologyaus#>



<http://www.youtube.com/user/SpeechPathAus>

Copyright © 2016 The Speech Pathology Association of Australia
Speak Out is the official bi-monthly magazine of The Speech Pathology Association of Australia Ltd. Speech Pathology Australia (SPA) owns the copyright to *Speak Out* and no part of this magazine may be reproduced without the explicit permission of SPA.

Write to us

Letters can be sent to pubs@speechpathologyaustralia.org.au
Letters may or may not be published in future issues of *Speak Out* magazine at SPA's discretion.

Advertisements

Please refer to the 'Publications' menu at www.speechpathologyaustralia.org.au to view the 2016 *Speak Out* ad kit.

Any queries may be directed to SPA's Publications Officer
T 1300 368 835 E pubs@speechpathologyaustralia.org.au

Advertising Booking Dates for April 2016 *Speak Out*

The official booking form must be received at National Office by
COB 4 March 2016.

Speak Out Branch Editors

ACT – via pubs@speechpathologyaustralia.org.au

New South Wales – Jessica Rennie and Eryka Artega

Northern Territory – Megan Redway

Queensland – Leanne Sorbello, Catherine Hicks, Erika Campbell and Rebecca Sexton

South Australia – Emma Leeson and Josie Kemp

Tasmania – Rachael Zeeman

Victoria – Shane Erickson

Western Australia – Johanna Eppler

Please see the website for Branch Editor contact details.

Disclaimer

To the best of The Speech Pathology Association of Australia Limited's ('the Association') knowledge, this information is valid at the time of publication. The Association makes no warranty or representation in relation to the content or accuracy of the material in this publication. The Association expressly disclaims any and all liability (including liability for negligence) in respect of use of the information provided. The Association recommends you seek independent professional advice prior to making any decision involving matters outlined in this publication.

Print Post Approved PP349181/01711
ISSN 1446-053X

speakout

February 2016

Highlights in this issue...



**NATIONAL CONFERENCE
PROGRAMME OVERVIEW P13**



PAGE 15 BOOK OF THE YEAR



PAGE 9 A TRIBUTE TO CLARE JASEK

Contents

- | | |
|---------------------------------------|---------------------------------|
| 3 From the President | 20 CPD News |
| 4 Latest News | 21 <i>Speech Pathology 2030</i> |
| • Board of Directors Report | 23 Professional Practice News |
| • Swallowing Day Set | 24 Ethics News |
| 6 Quality and Safety Update | 25 Branch news: |
| 8 SPA Research Grants | • New South Wales |
| 10 Highlights of 2015 | • Northern Territory |
| 12 2016 National Conference news | • Western Australia |
| 15 Book of the Year | • South Australia |
| 16 Professional Development in Review | • Tasmania |
| 18 Spotlight on Professional Support | • Victoria |

From the President



Happy New year and welcome to 2016, a year full of exciting initiatives.

Happy New Year! I hope that for all of you 2016 has started well, and you have started the year feeling refreshed and ready for new challenges. With the hot days that every state and territory has had during December and January, many of you spent some time at a beach watching, surfing and jumping waves. If you live in rural and remote Queensland or the Northern Territory maybe you watched waves in rivers flowing for the first time in years.

Speech Pathology Australia has started the year 'making waves', with interviews being held for the *Speech Pathology 2030* thought leaders and conversations series booked in. The Senate inquiry into the educational attainment of students with disability handed down its report in mid-January, and the Association has gained some media coverage of our response.

Planning for the Branch Chairs' meeting in Melbourne to plan for the year is well underway. The meeting will take place in mid-February. Also in mid-February the Association has been invited to speak with Chief Allied Health Officers from the states and territories. Two workshops, with an expert consultant in online learning and NO

staff, have been held to review our CPD provision. Meaty conversations about credentialing and scope of practice have been held, with further discussions planned.

And of course, February marks the opening of registrations for **Making Waves** the Association's Speech Pathology National Conference to be held in May. With keynote speakers who are 'making waves' in their respective fields of research and clinical work, this conference promises to give your practice a boost with the latest evidence-based practice, opportunities to reflect on your practice and networking with your colleagues.

This edition of *Speak Out* provides you with updates on many Association activities, at a National and Branch level. Enjoy with a cool drink, and think about how these activities can help you 'make waves' by supporting your work with clients and colleagues.

I look forward to working with you this year through all of these exciting initiatives.

GAENOR DIXON
National President

Members...tell us what you really think!

SPEECH PATHOLOGY

AUSTRALIA National Office is currently undergoing a review of *Speak Out* magazine and we want to know what you think.

Do you like the content, the layout, the overall look, and do you think it represents the membership?

Speak Out is for you—the members, so help us to design a publication that is relevant to you.

Visit our survey page at www.surveymonkey.com/r/SPAMagazine to take

part in the short survey. The survey is anonymous and will greatly help us to shape the publication to your needs. By participating in the survey you can also provide your details to go into the draw to win free access to a CPDLive event.

For more information about the survey contact Publications Officer Rebecca Faltyn at pubs@speechpathologyaustralia.org.au.

We can't wait to hear what you've got to say!



NOVEMBER 2015 BOARD OF DIRECTORS MEETING REPORT

THE FINAL BOARD MEETING FOR 2015 WAS HELD ON THE 20-21 NOVEMBER 2015.

AN IMPORTANT COMPONENT of the November Board meeting was the review and approval of the Association's Budget for the coming year. A range of budget proposals for the operational and strategic activities of the Association were presented for consideration, with the Board accepting the final budget, following some amendments.

The *Speech Pathology 2030* project, credentialing, development of the Association's professional education program, aged care, disability, International Communication Project, and website re-development are just some of the key strategic focuses included within the 2016 budget. Further information on these important strategic activities will be communicated with members over the coming year.

Some further highlights from the meeting include:

- The President and CEO provided some insights on the recently attended 2015 ASHA Convention held in Denver, including discussion of specific strategic and networking meetings held, as well as some event and format options for consideration for our SPA National Conferences.
- Review of the Professional Education Model has further progressed with a preferred consultant identified to conduct a review of the current professional development offerings and formats, including consideration of current and future online learning delivery.
- An update on the Department of Health Embedding Simulation in Clinical Training in Speech Pathology project was received, noting that a presentation on the project was given at the 2015 ASHA Convention, by E Ward on behalf of the project team.
- The Board approved the appointment of Associate

Professor Joanne Arciuli (PhD) as an Associate Editor of International Journal of Speech Language Pathology (IJSLP).

- The Board was provided with an outline of the Speech Pathology 2030 – *making futures happen* project activities. More information regarding this exciting project will be available to members in the coming months.
- Speech Pathology Week 2016 will be hosted from 7 to 13 August 2016.
- The Board ratified the Volunteering in Speech Pathology Position Statement. This document is now available on the Association's website.
- Draft practice documents including 'Evidence Based Speech Pathology Practice for Individuals with Autism Spectrum Disorder' and the 'Trans-disciplinary Practice Position Statement' were reviewed and feedback provided.
- Phase 3 of the Transferability Project gained Board support and will proceed in 2016.
- Commitment to the next stage of the International Communication Project was confirmed, including financial contribution to a consultancy project aimed at identifying relevant international documents, and to establish strategies for these to more explicitly address communication disability.
- The Association's website redevelopment continues with the revised website due to be launched in March 2016.

The next Board meeting will be held in March 2016.

GAIL MULCAIR
Chief Executive Officer

DATE SET FOR INAUGURAL SWALLOWING AWARENESS DAY

SAVE THE DATE

WEDNESDAY 11 MAY, 2016

IN 2016, SPEECH PATHOLOGY

Australia will host its first Swallowing Awareness Day. With the support of the Association's Board, the inaugural Swallowing Awareness Day has been set down for the second Wednesday in May. This is in line with activity undertaken by Speech-Language and Audiology Canada (SAC), which conducts a similar event on this day each year.

The Association's communication and marketing team is currently developing a campaign plan to help promote the first

Swallowing Awareness Day in Australia. In addition, the Association is currently seeking SAC's permission to adapt some of their campaign material to help promote a better understanding of dysphagia in Australia.

In the lead-up to Swallowing Awareness Day, the Association will endeavor to make Australians aware that swallowing problems can occur at any stage in life. Social media, traditional media and other marketing channels will be used to draw attention to Swallowing Awareness



Day and the wider issues surrounding dysphagia.

Many Australians have never heard of dysphagia (dis-fay-juh) and have no idea that speech pathologists are the professionals who assess and treat these disorders.

Swallowing Awareness Day 2016 will be an opportunity to bring attention to swallowing disorders and to connect people with the professionals who can help.

QLD LEGACY FUNDS WELL UTILISED

DURING 2015 THE QUEENSLAND REGISTRATION BOARD LEGACY FUNDS WERE WELL UTILISED TO PROVIDE QUEENSLAND MEMBERS WITH A VARIETY OF PROFESSIONAL DEVELOPMENT OPPORTUNITIES.

CLINICAL DIVERSITY PLACEMENT GRANTS

\$30,000 was provided to QLD universities to assist with rural and remote placements throughout QLD. The universities used the funds to provide air travel, accommodation and petrol costs for their students to assist with these placements.



RESEARCH GRANTS

Liza Bergstrom was awarded a Queensland Registration Board Legacy Fund Research Grant, to the value of \$10,000, for her research titled 'Voice, communication and quality of life outcomes following radiotherapy and management of laryngeal cancer'

Research Grants will again be offered in 2016 so keep your eye out for further information.

CONTINUING PROFESSIONAL DEVELOPMENT

Four CPDLive events were offered free of charge to QLD speech pathologists

25 August 2015

Paediatric feeding difficulties: what is the evidence for treatment?
Presented by Jeanne Marshall

LIVE

Total: - 48 Queenslanders

Practicing Members: - 34

Non Members: - 14

RECORDING

Total: - 239 Queenslanders

Practicing Members: - 173

Non Members: - 66

21 September 2015

Understanding person-centred and enablement models of care to build opportunity for speech pathology services for older people. *Presented by Michelle Bennett.*

LIVE

Total: - 23 Queenslanders

Practicing Members: - 15

Non Members: - 8

RECORDING

Total: - 123 Queenslanders

Practicing Members: - 90

Non Members: - 33

28 October 2015

Update on diagnosis of Childhood Apraxia of Speech. *Presented by Elizabeth Murray.*

LIVE

Total: - 45 Queenslanders

Practicing Members: - 35

Non Members: - 10

RECORDING

Total: - 170 Queenslanders

Practicing Members: - 121

Non Members: - 49

9 November 2015

Technology enabled management of Parkinson's Disease. *Presented by Prof Deborah Theodoros.*

LIVE

Total: - 17 Queenslanders

Practicing Members: - 12

Non Members: - 5

RECORDING

Total: - 79 Queenslanders

Practicing Members: - 52

Non Members: - 27

Throughout 2016 another four CPDLive events will be held free of charge for QLD members. Make sure you take advantage and register. Please remember to pass this information onto those of your colleagues who are not Speech Pathology Australia members.

NEW SPA MEMBER FACEBOOK COMMUNITY - JUSTICE

SPEECH PATHOLOGY AUSTRALIA RECENTLY LAUNCHED A NEW FACEBOOK GROUP FOR THOSE MEMBERS COMMITTED TO ADVANCING SPEECH PATHOLOGY SERVICES WITHIN THE JUSTICE SECTOR.

IT IS WIDELY RECOGNISED that individuals with communication disorders are over-represented in the justice system, whether as victims, witnesses or defendants. It is pleasing to know that this fact is becoming a driver for a range of new services to support those who are vulnerable in the justice system due to their communication difficulties. In the December 2015 issue of *Speak Out*, an article was devoted to some examples of these services and pilot programs being introduced within Australia to support vulnerable witnesses. It is known also that there is some increased involvement of speech pathologists directly providing services within the justice system to those with a communication disability.

The Justice Member Community network will be of interest to members of Speech Pathology Australia who are committed to advancing speech pathology services within the Justice sector. Currently this may involve speech pathologists

providing services to those within (or at risk of becoming within) justice services, including jails and young offender centres. It may also involve speech pathologists providing consultancy services to various parts of the justice system, including training of police and court personnel, as well as taking on emerging roles, such as Witness Intermediary positions.

Previously much of this discussion has occurred within the Mental Health Member Community and while it is recognised that there is a cross-over of the two areas, a dedicated community is now warranted, due to the increasing activity in the area. As with some of the other Facebook Member Communities, where relevant, posts can continue to be uploaded across all relevant groups.

For those interested, visit the community page www.facebook.com/groups



QUALITY AND SAFETY REGULATION UPDATE

AS THE SPEECH PATHOLOGY PROFESSION EMBARKS on discussions about its future through the *Speech Pathology 2030 – making futures happen* project, it is timely to update you on issues relating to the regulation of the quality and safety of the profession.

Members often ask what SPA is doing about national registration. At the heart of this question lie legitimate concerns about how our profession is perceived and concerns about the unintended consequences of not being a registered profession, including potential lost opportunities only available to registered practitioners. We do, and will continue, to advocate for national registration and in its

absence, recognition that our self-regulation processes are an appropriate equivalent.

You also have an important part to play in raising awareness and correcting mis-information about how the quality of our practice is achieved. You can inform clients, potential employers and colleagues that we are not required to have additional regulation of our professional practice through national registration. You can also explain that CPSP membership of SPA is the marker to tell if someone is a high quality and safe practitioner of the speech pathology profession.

Recognition of Self-Regulating Health Professions

The National Registration and Accreditation Scheme (NRAS) was set-up by governments to largely address safety concerns in health care delivery. As such, governments have seen no need to regulate many allied health professions which they view as 'low risk' to the Australian public. However, public expectation is that all health professionals are registered.

In 2007, eight allied health professions formed an alliance – the National Alliance of Self-Regulating Health Professions (NASRHP) - to develop a comprehensive set of standards and to provide consistent governance across self-regulating health professions. SPA is a founding member of this group.

Protection to the public will be provided through the NASRHP Self-Regulation Framework via practitioner certification through the peak professional body (in our case, CPSP membership of SPA). The peak professional body for the health profession administers functions equivalent to (and in some cases, to a higher standard) than those of NRAS.

NASRHP has developed a framework of best practice standards to be applied to self-regulating allied health profession associations. These standards cover:

1. Scope (areas) of practice
2. Code of Ethics/practice and/or professional conduct
3. Complaints procedures
4. Mandatory declarations
5. Professional indemnity insurance
6. Competency standards
7. Practitioner certification requirements
8. Course accreditation
9. Recency and resumption of practice requirements
10. English language requirement
11. Continuing professional development.

NASRHP member bodies (including SPA) are in the process of advocating to governments that they formally recognise the NASRHP Self-Regulation Framework by which authorised professional associations assess and accredit practitioners against these standards. In essence, we are seeking government and legislative recognition that we self-regulate our profession to the same standards as those of professions required to be regulated under NRAS.

Registration with AHPRA

SPA has made two formal applications to have speech pathology included in the National Registration and Accreditation Scheme (NRAS) through the Australia Health Practitioners Regulation Agency (AHPRA)—in 2008 and again in 2011.

Feedback was that speech pathology does not pose sufficient risk to public safety to warrant the financial investment to be registered through NRAS (we disagree) and that existing self-regulatory mechanisms (through SPA membership) are sufficient to protect public safety.

For a new profession to be included in NRAS, every state and territory Minister for Health and the Federal Minister for Health needs to agree to invest additional funding to AHPRA. This agreement can only happen through a cross-government group called the COAG Health Council.

In late 2014, we were involved in a series of government consultations of a review of NRAS carried out by an independent reviewer. Our written submission can be found on our website. We argued strongly that the risk/cost criteria for inclusion in NRAS was flawed and that while the practice of speech pathology care was a low risk (compared to medical professions), that low risk does not mean no risk!

The NRAS Independent Reviewer made three important recommendations to the Health Ministers that are of interest to us:

1. The professions in NRAS that pose low risks to public safety should be consolidated under one NRAS Board (similar to what happens in the UK).
2. Ministers should make adjustments to legislation and issue a formal communique describing that the purpose of NRAS is for additional regulation of public safety of some professions only—so as to ensure that non-registered professions are not excluded or disadvantaged in any way, and to promote the fair treatment of all health professionals.
3. That Ministers "establish a system of quality assurance for voluntary registers for self-regulated professions".

The Ministers are currently considering these recommendations. If the low risk professions are consolidated under one board under NRAS — this might provide a situation where an application for speech pathology to be registered would be more favourably considered.

The Ministers have agreed to issue a communique about the purpose of NRAS for 'additional' regulation of public safety for some professions but have not as yet issued it. This will be distributed to members if, and when, it is available and will be a useful tool to advocate and increase understanding of why speech pathology does not require an additional level of regulation through registration.

There now exists through NASRHP the very system of quality assurance for self-regulated professions recommended to the Ministers. This provides an avenue for SPA to advocate to governments to formally recognise that our profession has a robust self-regulation framework that is sufficient for public safety and that the CPSP credential is an equivalent to NRAS registration for our practitioners.

GAIL MULCAIR
Chief Executive Officer

RONELLE HUTCHINSON
Manager, Policy and Advocacy



Speech Pathology Week 2015 succeeded in raising the awareness of the profession.

SPEECH PATHOLOGY WEEK 2016

SAVE THE DATE

SUNDAY 7 AUGUST TO SATURDAY 13

SPEECH PATHOLOGY WEEK 2016 will be slightly earlier than in previous years. The Association's public awareness campaign is being held earlier in 2016 so it does not overlap with the 30th World Congress of the International Association of Logopedics and Phoniatrics, which is being held in Dublin from 21-25 August.

As in 2015, while the focus remains on the formal week, the Association's public awareness campaign will be widened to encapsulate the 30 days in the lead up to it. This provides great opportunities for the Association to promote the week and secure publicity through social media, traditional media and other marketing channels. A Speech Pathology Week campaign kit is currently being developed, and members interested in securing a kit will be able to indicate their interest in advance of its release.

Members will be notified of the week's theme in the coming weeks. As in 2015, there will be a separate Speech Pathology Week campaign page on the Association's website. In 2015, the 'Talk With Me' page was one of the top 10 most visited pages on the Association's website during the relevant period. The new campaign page will be launched later in the year.

MICHAEL KERRISK
Marketing and Communications Manager

SPA RESEARCH GRANTS ANNOUNCED

SPEECH PATHOLOGY AUSTRALIA IS PLEASED TO ANNOUNCE THE WINNERS OF THE 2015 RESEARCH GRANTS.



From top left: Clara Ri, Jennie Cusiter, Sarah Masso, Ellie Sugden, Katherine Sanchez, Liza Bergstrom.

THE SPEECH PATHOLOGY AUSTRALIA research grants were awarded recently in the categories of Clinician, Entry Level, Higher Degree by Research, Nadia Verrall and Queensland Registration Board Legacy Fund categories.

All grant recipients have been notified of their success – and we wish them well as they undertake their research.

The largest number of grant applications received in 2015 was in the Higher Degree by Research category (10). Applicants are able to apply for more than one category of grant, with many applicants for the Nadia Verrall Memorial Research Grant also applying in another category.

There was a slight decrease in the number of applications received this year, so we encourage all of you to consider applying in 2016.

The award winners are as follows:

Clinician

\$5,000

Clara Ri, Victoria

Investigating the outcomes of a non-electronic communication aids scheme for children in Victoria.

Nadia Verrall Memorial Research Grant

\$5,000

Katherine Sanchez, Vic

Feeding and communication development of children born <30 weeks gestational age.

\$10,000

Jennie Cusiter, NSW

Investigation of the Launch to School programs effectiveness in improving the pre literacy and language skills of speech and language impaired children when compared to usual care.

Queensland Registration Board Legacy Fund

\$10,000

Liza Bergstrom, QLD

Voice, communication and quality of life outcomes following radiotherapy and management of laryngeal cancer.

Higher Degree by Research

\$5,000

Sarah Masso, NSW

A longitudinal analysis of children's polysyllables before and after an input-based intervention.

Grateful thanks to all those people who undertook the reviews required to select award winners. The research grant program could not function without your assistance. My thanks also to Nicole Pantalleresco, who undertook many of the administrative tasks.

\$10,000

Ellie Sugden, NSW

Addressing service delivery constraints within the Australian context: The role of parents in intervention.

CORI WILLIAMS

Senior Advisor EBP & Research



ELR Software

Speech Pathology Resources

Join our free online workshops

- Phonology
- Phonological Awareness
- Reading and Spelling
- Semantics
- Sentence Processing
- Using Language

Presented fortnightly by Toni Seiler, speech pathologist, PhD

- *Overview of eLr
- *Providing free access for clients
- *Detailed demonstration of each section
- *Specific topics on request

For details go to: www.elr.com.au/events

Vale

VALE: CLARE ELIZABETH JASEK, NEE CARROLL

SPEECH PATHOLOGY AUSTRALIA is deeply saddened by the passing of a highly respected member, colleague and friend. Clare graduated in 1980 from the Cumberland College of Health Sciences (Sydney University) with a Bachelor of Health Sciences Speech Pathology.

Clare worked in a range of settings within Victoria, NSW and overseas and practised across public and private settings. Clare was a strong advocate for the profession and highly committed to professional development and excellence, in the interests of her clients.



Clare Jasek (right) with, (from left) Gail Mulcair, Robyn Stephen and Sharon Crane at a past SPA National Conference.

Clare was a regular attendee at SPA conferences and professional development events, and in her early career at Caulfield Hospital, worked alongside Association Director Robyn Stephen, and National Office staff members, Gail Mulcair and Sharon Crane.

Clare will be greatly missed by the speech pathology profession and remembered as a passionate and



highly professional speech pathologist, committed to making a difference to the lives of the many clients with communication difficulties with whom she worked, over the 35 years of her distinguished and loved career.

Clare passed away peacefully with her family by her side on 28 December 2015 after an illness in recent years.

Clare is survived by her husband Steve, and children, Laura and David, and grandchildren, Audrey, Oliver and Emma. Our sincere condolences and thoughts are extended to Steve and family.

GAIL MULCAIR
Chief Executive Officer

A WOMAN OF *compassion*

FRIEND AND COLLEAGUE HELEN NORTHEY PREPARED THIS TRIBUTE TO CLARE—A WOMAN OF PASSION AND COMPASSION.

Clare (Carroll) Jasek - a woman of passion and compassion for helping people and children who needed a better chance in life.

One of the remarkable qualities of speech pathologists is their innovativeness and willingness to step in where even angels might hesitate. In doing so, professionals such as Clare have made many positive differences to countless lives. Clare (Carroll) Jasek was such a colleague.

A graduate of the Lidcombe Bachelor's Degree programme, she entered the adult rehabilitation service at the then Caulfield Hospital in Melbourne, working within a Speech Pathology team led by Kath Tarratt; halcyon days they may have been for a young graduate who chose to start in neurological rehabilitation. Clare returned to Sydney with her husband Steve, where they began a life contributing to communities as far afield as Japan, Hong Kong, and the USA through her speech and language services and other faith-based work.

Clare ran a thriving speech pathology practice in southwest Sydney's Revesby for more than two decades

before selling it in recent years to dedicate herself to her volunteer work with Steve.

Two situations stand out for me in Clare's workday world: her leadership in handling family and educational needs of a 4-year old in Hong Kong who had been diagnosed with Williams-Beuren syndrome (WBS); and her pioneering of speech and language services for severe-developmentally delayed children in a city where speed and success define each moment. Since those times in the early 2000s, the range of services for children with special needs in Hong Kong has grown immensely, and without question, Clare helped position the relevance and urgency of specialist services for this otherwise hidden corner of the community.

Clare enjoyed her life as a grandmother too and shared her joy for new life at each professional and personal step. Her nous and ingenuity remain an important example for our profession. She passed from this life on 28 December 2015 in Sydney and too soon.

HELEN NORTHEY

SPA celebrates *the highlights* of 2015



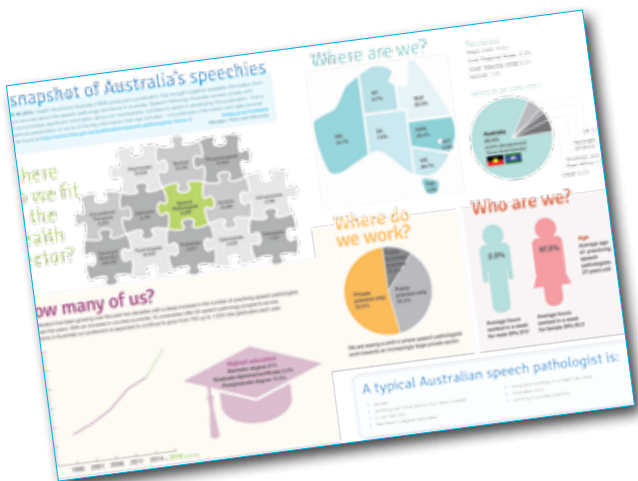
FROM BRILLIANT BOOKS, TO GOVERNMENT SUBMISSIONS - 2015 WAS A GREAT YEAR. JOIN US AS WE CELEBRATE THE ACHIEVEMENTS OF MEMBERS, THE ASSOCIATION AND INDUSTRY PARTNERS.

MEMBERSHIP OF SPEECH PATHOLOGY AUSTRALIA REACHED A RECORD BREAKING 6,929.

THE ASSOCIATION MADE A SUBMISSION TO THE AUSTRALIAN GOVERNMENT DEPARTMENT OF TREASURY FOR THE FEDERAL BUDGET 2015-2016.

THE ASSOCIATION'S MENTORING PROGRAM SECURED 83 MENTORING PARTNERSHIPS.

SPEECH PATHOLOGISTS IN FOCUS, a publication of Health Workforce Australia, provided a snapshot of a 'typical' Australian speech pathology professional. The publication identified them as female, working part-time, in her late 30s, Bachelor Degree educated, living and working in a major city area, Australian born, and working in private practice.



The International Communication Project 2014 evolved into the **International Communication Project** with the goal to "ensure global health policy explicitly recognises, covers, informs, and addresses communication disabilities". The ICP engaged Weber Shandwick, an internationally recognised consultant, to give affect to its new goal.



The Association's National Conference (Challenge, Broaden, Revolutionise) in Canberra was attended by over 544 delegates. **National Conference** was opened by the Federal Minister for Health, The Hon. Sussan Ley MP.



RACHEL HULL WAS AWARDED THE 2014 HESTA STUDENT OF THE YEAR AWARD.

Speech Pathology 2030 – making futures happen was launched to define a vision for the future of speech pathology from now to 2030.





Speech Pathology Australia was one of 117 non-government organisations to take part in the launch of 'Recognise Health', an initiative of the Lowitja Institute that aims to promote understanding of the **important link between health, wellbeing**, and constitutional recognition of Aboriginal and Torres Strait Islander people.

Speech Pathology Week 2015 promoted the theme *Talk with Me*, with the Tasmanian Branch's *No Bars on Books* initiative securing donations of over 3000 new and used books.



Ruth Hartman and Wesley Heights win an Australian Aged Care Quality Agency Better Practice Award for their Conversation Club.



Five books and their author/illustrators were celebrated as part of the Speech Pathology Australia **Book of the Year 2015 Awards**, held in Brisbane in partnership with the State Library of Queensland.



Fellowship was awarded to Dr Janet Beilby; the Elinor Wray Award went to Karyn Johns; and Life Membership went to Professor Sharynne McLeod. The **inaugural Community-based Innovation in Speech Pathology Award** was conferred on the Wollongong Catholic Education Office.

So much to celebrate...

- ★ The Association endorsed the State Library of Queensland's First **5 Forever Toolkit for parents**, which includes the 2014 Book of the Year winner—*I am a Dirty Dinosaur!* The Association's logo appears on much of the toolkit's collateral.
- ★ The **Association curated the @WeSpeechies #RoCur** on the topic 'Strategic planning: objectives, deliverables and future directions'.
- ★ The South Australian Branch launched **New and Aspiring Speechies (NAAS)**.

- ★ The Association's National Office moved into **new premises** at Level 1 / 114 Williams Street, Melbourne – less than 200 metres from the Association's former location of 18 years in Bank Place.
- ★ The Association's new **Code of Ethics** – Advertising Policy came into effect on 1 July, 2015.
- ★ A total of 64 CPD events were run in 2015. **Fifty-four Branch events** with 1240 registrations, plus 10 online events attracted over 1400 registrations.



The Journal of Clinical Practice in Speech-Language Pathology editor's prize was awarded to **Dr Kathryn Crowe and Professor Sharynne McLeod** for their article, *Communication choices: Translating research to practice for professionals working with children with hearing loss*.

NATIONAL CONFERENCE 2016: MAKING WAVES

15-18 May 2016 Crown Perth, Western Australia

Program Update

The CPC is pleased to advise that the 2016 National Conference—**Making Waves** program has been finalised. This was a particularly challenging process given the large number of high quality submissions received. Despite the SPSC and CPC trying many and varied program formats, there unfortunately was not enough space to include every submission into the overall program and theme. We acknowledge and thank everyone for the time and effort taken to submit their abstracts.

We are very pleased with the program, and believe there will be an excellent range of high quality presentations under a number of topics that will be of interest to a cross-section of the profession.

Authors who received notification late in 2015 of the inclusion of their abstract were emailed the 'official' confirmation. If you have not been contacted, please email the National Conference Manager on conference@speechpathologyaustralia.org.au.

Conference Program Flyer

On pages 13 and 14 of this issue of *Speak Out* is a copy of the Conference Program Flyer with an overview of the sessions that will be presented.

The SPSC and CPC are delighted that the two Conference keynote speakers are offering a masterclass presentation on the Sunday prior to the pre-registration and welcome reception.

Dr Ebbels' masterclass will provide an update on the evidence for intervention for language impairments in the school-aged population. Discussing both receptive and expressive language at the word, sentence and narrative level, this masterclass will be essential for paediatric speech pathologists, with a focus on the implications of the evidence on clinical practice.

In the masterclass by Professor Enderby, ten essential principles for improving interdisciplinary practice will be discussed, an area of relevance to all speech pathologists. The concept of interdisciplinary practice, barriers and facilitators, and ways to improve how we work with others will be explored.

Registration for Making Waves

The online conference brochure and registration will be available from the Conference web site from **Monday 8 February, 2016**. Please ensure you have renewed your membership for 2016 to take advantage of the early bird registration rate. The early bird rate closes **Wednesday 13 April 2016**. To try to ensure a faster process and less chance of being logged out, we ask that you read through the Conference program, select the sessions you wish to attend, and then proceed to the online registration process.

Restaurant Night

The restaurant night will be on the Tuesday evening of the Conference. To help facilitate the process and have a clearer estimate of participant numbers, please select your restaurant preference at the time of registration. A variety of restaurants

with various cuisines have been selected. At the Conference, delegates will be asked to re-confirm their attendance by morning tea Tuesday 17 May so restaurant reservations can be finalised.

Call for Student Volunteers/Assistants

Speech Pathology Australia is calling for speech pathology students at Curtin and Edith Cowan Universities who are financial members of the Association to volunteer as staff assistants for the Making Waves: Speech Pathology Australia 2016 National Conference. You will assist the National Conference Manager and need to be available from the morning of **Saturday 14 May** through until the evening of **Wednesday 18 May 2016**. In appreciation of your commitment, your student Conference registration fee will be waived. You must be prepared to work hard, be flexible, responsive to organisational requirements and have some fun as well!! Applicants must be a current financial Speech Pathology Australia member. Email your resumé to Pamela Richards, National Conference Manager on conference@speechpathologyaustralia.org.au no later than **Thursday 3 March 2016**. Please include your area/s of interest so if you are successful she can try to match you to relevant sessions.

Call for Session Chairs

Speech Pathology Australia members are invited to chair one or more program sessions at the 2016 National Conference. We have received a number of offers from people willing to be session chairs – thank you to all those people! However, there are still sessions available so if you are interested in assuming this valuable role, please email Deborah Hersh, Scientific Program Sub-committee Chair, on d.hersh@ecu.edu.au with your details and a short list of your topics of interest, no later than **Monday 29 February 2016**.

Exhibitor Update

The 2016 CPC would like to welcome our new exhibitors MMAT, National Relay Service and SPC Ardmora.

Accommodation

Arrangements have been made with Crown Promenade and Crown Metropal to allow delegates to make their own bookings. Please visit the Accommodation link on the Conference website to proceed to the online booking form. There are alternative accommodation options within a 35 minute walk. There is a map on the Conference website to assist you.

Airport Transfers

Speech Pathology Australia has organised with Connect Perth Airport Shuttle, to assist delegates in booking their transfers from Perth Airport to their hotel and return.

Connect is offering SPA delegates a discounted rate of \$10 one way or \$15 return (cheaper than the advertised rate).

If you are interested in making a booking, visit www.perthairportconnect.com.au/bookings.html and follow the questions.

MICHELLE QUAIL

Conference Convenor 2016

PAMELA RICHARDS

National Conference Manager



Keynote speakers



Dr Susan Ebbels

Susan is a speech and language therapist and the Research & Development Coordinator at Moor House School and College, UK, a special school for children with developmental language impairments. She has an honorary position at University College London, is an associate editor of the International Journal of Language and Communication Disorders and on the editorial board of Child Language Teaching and Therapy. Dr Ebbels' keynote address will present the importance of clinical research and practical ideas for speech pathologists to carry out research on their interventions. A practical follow-up seminar on the Shape Coding system will assist delegates working with children with language impairment to use this system to improve receptive and expressive language. Dr Ebbels will also be presenting a masterclass, providing an update on the evidence for intervention for language impairments in the school-aged population.



Emeritus Professor Pamela (Pam) Enderby

Pamela (Pam) qualified as a speech and language therapist in 1970. At the University of Sheffield she has held the positions of Head of Department and Dean of the Faculty of Medicine. Pam was the lead in the Equal Pay case which, after 14 years, was found in favour of Speech and Language Therapists in the European Court of Human Justice. She was awarded a Fellowship of the College of Speech Therapists and was honoured with an MBE for services to speech and language therapy. Professor Enderby's keynote address will encourage delegates to consider the key ingredients and recipes required to become Masterchefs in our profession. She will present a subsequent seminar emphasising the importance of therapy outcome measurement to our profession, with a pre-conference masterclass discussing ten essential principles for improving interdisciplinary practice.



Elizabeth Usher Memorial Lecture: Winthrop Professor Andrew Whitehouse

Andrew directs the Autism Research Team at the Telethon Kids Institute, and is one of the youngest ever Professors at the University of Western Australia. His research team use a range of methodologies to investigate the early identification and intervention of children with Autism Spectrum Disorders (ASD). He currently writes a popular column on child development for The West Australian and the news website The Conversation, which has attracted over 1 million hits since 2012. Andrew will challenge the rulebook as to how and when we identify children with ASD, sharing the latest research and a potential paradigm shift towards earlier identification and intervention for ASD. Professor Whitehouse will pose the question of whether ASD may be prevented if therapy is provided at a time that is optimal for brain development.



May 15-18 2016
Crown Perth, Western Australia



Program overview

Sunday 15 May 2016

Sunday masterclasses are optional extras to the registration fee.

9.00am – 12.30pm

SM1 *10 Principles for improving interdisciplinary practice*
Emeritus Professor Pamela (Pam) Enderby

1.30pm – 5.00pm (includes Afternoon tea)

SM2 *The current evidence base for school-aged children with language impairments*
Dr Susan Ebbels

5.15pm – 5.30pm

Speakers, chairpersons and student volunteers briefing

5.00pm – 6.30pm

Pre-Registration and Exhibition

6.30pm – 8.30pm

Welcome Reception

Sponsors include:



Conference Dinner
& Photo Booth



Nestlé HealthScience

Conference Lanyards



Monday 16 May 2016

8.45am – 9.20am

Welcome to **Making Waves 2016** and opening address

9.20am – 10.30am

MKP Keynote address by **Emeritus Professor Pamela (Pam) Enderby**
Speech pathology as the Masterchef: Getting the right ingredients and stirring the pot

10.30am – 11.30am Morning tea (inc Poster session)

11.30am – 12.45pm

M1 *Working in schools*

M2 *Telehealth*

M3 *Clinical education 1*

M4 *Research and evidence*

M5 *Dysphagia 1*

12.45pm – 2.00pm Lunch

ML *The International Dysphagia Diet Standardisation Initiative*
 (lunchtime presentation 12.45pm - 1.45pm)

2.00pm – 3.30pm

M6 Keynote seminar presentation by **Emeritus Professor Pamela (Pam) Enderby**
Therapy outcome measures (S)

M7 *Fluency*

M8 *Paediatric feeding*

M9 *How to engage in a collaborative, reflective, relationship-based supervision with colleagues and students (W)*

M10 *Literacy*

3.30pm – 4.00pm Afternoon tea

4.00pm – 5.30pm

M6 Keynote seminar presentation by **Emeritus Professor Pamela (Pam) Enderby**
Therapy outcome measures (S) cont'd

M11 *Aged care*

M12 *Improve early language learning through use of strategies with parents/caregivers (W)*

M13 *Speech pathology in Indigenous contexts*

M14 *Paediatric service delivery*

5.45pm – 7.00pm

Speech Pathology Australia: Annual General Meeting and Awards

Tuesday 17 May 2016

9.00am – 10.30am

TEU Elizabeth Usher Memorial Lecture by **Winthrop Professor Andrew Whitehouse**
Can we prevent disability in autism through infant interventions? Re-writing the rulebook

10.30am – 11.00am Morning tea

11.00am – 12.30pm

T1 *Cultural and linguistic diversity*

T2 *Autism spectrum disorders*

T3 *Dysphagia 2*

T4 *Adult complex care*

T5 *Paediatric language*

12.30pm – 2.00pm Lunch

TL *Supporting speech pathologists in rural and remote Australia*
 (lunchtime presentation 12.45pm - 1.45pm)

2.00pm – 3.30pm

T6 *Clinical guidelines for speech pathologists working in the area of students' literacy (W)*

T7 *Disability*

T8 *Harnessing key principles of plasticity in dysphagia rehabilitation (W)*

T9 *Paediatric speech and voice*

T10 *Shaping clinical services to work with Indigenous people: Lessons learned from research in Indigenous contexts (W)*

3.30pm – 4.00pm Afternoon tea

4.00pm – 5.30pm

T11 *Aphasia*

T12 *'Sound Start Study' symposium*

T13 *Children with hearing impairment*

T14 *Working with adolescents*

T15 *Can ethics help you sleep at night? (W)*

5.45pm – 7.45pm

T16 *Speech Pathology 2030: A vision to aspire workshop*
 Restaurant night

7.00pm Restaurant night

7.45pm – 9.00pm University staff reception

Tuesday 17 May 2016

9.00am – 10.30am

WKP Keynote address by **Dr Susan Ebbels**
Carrying out intervention research in clinical practice

10.30am – 11.00am Morning tea

11.00am – 12.30pm

W1 Keynote seminar presentation by **Dr Susan Ebbels**
Introduction to Shape Coding for teaching grammar to language impaired children (S)

W2 *A voice summit: Are we facing a climate change in voice? Reclaiming voice as a core component of speech pathology practice (T)*

W3 *Clinical education 2*

W4 *Surfing the augmentative and alternative communication (AAC) wave together (W)*

W5 *Service delivery and management*

12.30pm – 2.00pm Lunch (inc Poster session)

2.00pm – 3.30pm

W1 Keynote seminar presentation by **Dr Susan Ebbels**
Introduction to Shape Coding for teaching grammar to language impaired children (S) cont'd

W6 *Rehabilitation*

W7 *Paediatric early intervention*

W8 *Social media and blogging: The new language you can't ignore for much longer (W)*

W9 *What about me? Consumer panel discussion*

3.30pm – 4.15pm

Close of **Making Waves 2016** and launch of 2017 National Conference Sydney

7.00pm – 12.00am

Pre Dinner Drinks and Guild Insurance Conference Dinner



Presentations are subject to change so please ensure you regularly check the **2016 National Conference webpage** at www.speechpathologyaustralia.org.au.

(S) denotes seminar, (T) denotes summit, (W) denotes workshop



BOOK of the YEAR

awards 2016

THE BOOK OF THE YEAR AWARDS RAISE AWARENESS OF THE ROLE SPEECH PATHOLOGISTS PLAY IN ASSISTING PEOPLE OF ALL AGES TO DEVELOP THEIR LANGUAGE AND LITERACY SKILLS.

In 2016 five award categories will be contested including:

- Birth to 3 years of age
- Three to 5 years of age
- Five to 8 years of age
- Eight to 10 years of age
- Indigenous Children

As in 2015, the Birth to three years category is strongly supported by Let's Read Australia.



CALL FOR NOMINATIONS

Do you have a favourite children's book that you believe should be nominated for this year's awards?

The Association is seeking nominations for children's books that speech pathologists feel promote oral language development and literacy skills in the five award categories.

A book needs to be exciting and stimulating, and satisfy the eligibility criteria:

- written by an Australian author;
- readily available in Australia;
- published in 2015 or 2016;
- retail for no more than \$30;
- facilitate interaction and collaboration;
- appeal to children; and
- maintain high production standards (graphics, design, paper stock, etc.)

The nomination form is available from the Book of the Year page on the Association's website. The deadline for nominations is 18 March.

HALL OF FAME NOMINATIONS

When warranted, Speech Pathology Australia presents its Children's Language and Literature Award. This is the Association's 'Hall of Fame' award.

The award recognises authors who have contributed significantly to children's language and literature. The award is not presented every year and only when a stand-out



candidate is nominated by a member. The relevant nomination form and selection criteria are available from the Book of the Year page on the Association's website. The deadline for nominations is 15 March. There was no award in 2015.

SEEKING JUDGES

Each of the five categories of the Book of the Year uses the services of eight volunteer judges. All judges are asked to read and critique the shortlisted books according to a pre-prepared judging template. Once the judging process is complete all the reviewed books are donated by a judge to an organisation that will benefit from receiving them.

If you are interested in judging the Book of the Year Awards in 2016 you will need to satisfy the following criteria:

- have an interest in children's language and literature,
 - some paediatric experience (this may be through work or family experience),
 - the time over June to August to read and critique approximately 12 shortlisted books,
 - the ability to work to a strict time deadline.
- If that sounds like you, please email marketing@speechpathologyaustralia.org.au with the following details:
- your name,
 - postal address,
 - contact details,
 - the category you would prefer to judge (one only) a very brief description of why you would be a good judge.

The closing date for expressions of interest for judging is 15 April.

Please note that preference is given to members who were Book of the Year judges in 2015.

MICHAEL KERRISK

Marketing and Communications Manager

Speech Pathology Australia (SPA) Professional Development – 2015

Paying registrants – Open to Members + Non Members
non SPA members pay double (with some exceptions)

National Conferences

- Annual
- Keynotes
- Concurrent sessions
- Workshops/
Masterclasses
- Rotates through Branches
- Exhibition
- Sponsorship

Events/ workshops (other)

- Private practice seminars

CPD workshops

- Face-to-face
 - 2 days
 - 1 day
 - half-day workshops
- Branch
- Multi-Branch
- Annual National Tour
- Traveller's rate discount registration fee for rural and regional members and members in small Branches (ACT, NT, TAS)

National Tours

- workshops
- CPD Live Events

- Annual
- Varying area of clinical practice within scope of Speech Pathology practice
- Multi-modal format 2014 + onwards speaker presents workshops across Australia followed by CPD Live Online event at end of year
- Recording of final workshop each year for CPD Events Library
- 2010 followed by videoconference

Online CPD live events

- Monthly 90-minute live online events

- Can register or to view

At a glance

2015

- 544 registrations (including full and day registrations, speakers and exhibitors)

2010-2014

- Registration numbers 500-900
- Average number of presenters = 150
- 3 days in length or 4 if Masterclass included
- Exhibition of 40-60 exhibitors

At a glance

2015

- Average registrations per event = 45
- Average overall event rating = 4.5 out of 5

2012 - 2014

- Average registrations per event = 39 per annum
- Average Overall Event Rating = 4.5 out of 5 p.a.

At a glance

2015

- 54 workshops
- 1240 registrations
- Number of Traveller's rate registrations = 226
- Overall Event rating average of 4.6 out of 5
- Quality of Presentation rating = average of 4.6 out of 5

2010-2014

- Average of 54 workshops p.a.
- Average of 1699 registrations p.a.
- Average number of Traveller's rate registrations = 288 p.a.
- Average Overall Event rating = average of 4.5 out of 5 p.a.
- Average Quality of Presentation rating = average of 4.6 out of 5 p.a.

At a glance

2010 -2015

- Average of 293 registrations per tour.
- Across a range of areas within SPA's scope of practice.

Watch this s

In 2016 SPA plans to study packages, and events.

At a glance

Registrations as at end of events that ran in 2015*:

- Live = 249
- Recording = 1109
- Total = 1358

Registrations as at end of events that ran in 2014:

- Live = 101
- Recording = 383
- Total = 484

*Includes four events as Legacy Fund

Feedback, Evaluation, Planning

- Surveys
 - for all PD
 - all registrants—members and non members
 - conducted online and at events
 - surveys cover satisfaction, delivery formats, future planning

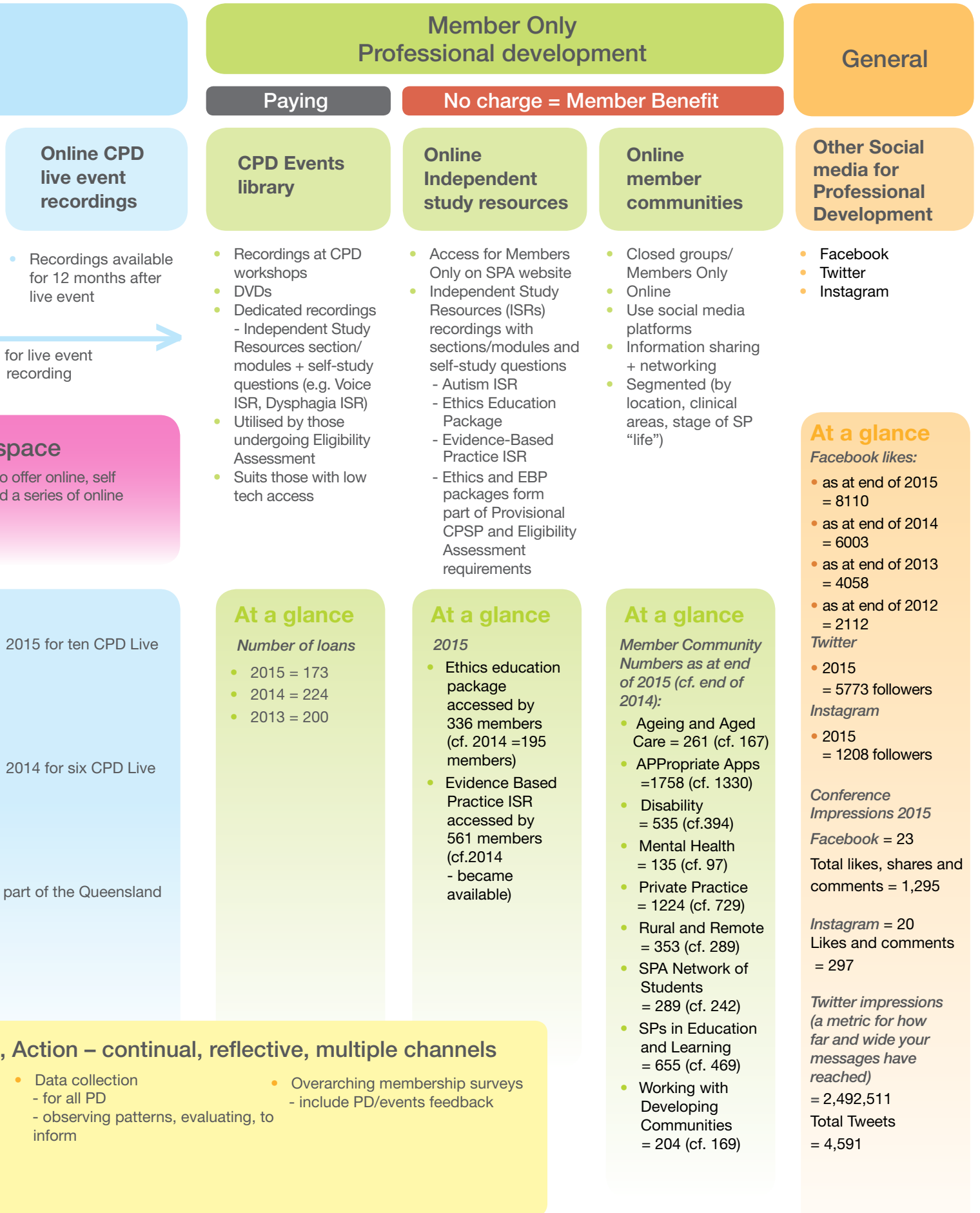


Speech
Pathology
Australia

in review

Professional development - lifelong learning to “continually update and extend our professional knowledge and skills.”

(Speech Pathology Australia’s Code of Ethics, 2010)



SPOTLIGHT ON PROFESSIONAL SUPPORT

SUPERVISION AND MENTORING

EIGHTY FIVE MENTORING partnerships were registered in 2015, which is nearly double the number registered the previous year. It's a great to start 2016 with nine speech pathologists listed on the supervision register and 57 speech pathologists listed on the Find a Mentor search. We encourage speech pathologists not currently receiving clinical supervision in their workplace to negotiate with their employer to receive external supervision.

For more information about supervision go to:

www.speechpathologyaustralia.org.au/information-for-members/supervision and information about mentoring can be found at: www.speechpathologyaustralia.org.au/information-for-members/mentoring-program

Peer Support

While there has been a strong emphasis on supervision and mentoring in this section of Speak Out, there are a variety of other ways to ensure you are adequately and appropriately



supported professionally. One avenue for receiving and giving professional support is through a peer support relationship. See the next page for a great example of how two members have set up and benefited from a peer support relationship. Peer support is recognised as a professional development activity in the PSR program and earns one point per hour spent on this activity under the mentoring, supervision, and peer support (M) category.

MEREDITH PRIAN

Professional Support Advisor

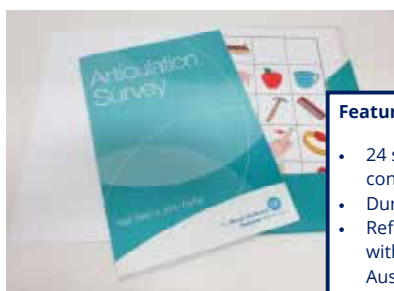
Articulation Survey

Neil Atkin & John Fisher



Developed and used by Speech Pathology at the Royal Children's Hospital in Melbourne, the Articulation Survey is an assessment tool used to screen how a child uses sounds in words.

- Easily administered – does not require special training.
- Quick – takes 10-15 minutes to administer and score.
- Non-speech pathologists can use the test.



Features

- 24 single consonants and 27 consonant blends
- Durable, laminated picture sheets
- Referenced against 299 children with normal speech growing up in Australia
- Data available for 3 and a half to 7 year olds.
- Provides an articulation score

To order or learn more about this assessment, visit the Articulation Survey website at <http://www.rch.org.au/articsurvey/>



Multisensory Instruction in Language Arts 1

Teacher Training Course

Gain the skills to teach writing, spelling and reading to primary school students.

January, July and September

Sydney, Melbourne, Hobart, Brisbane and Perth

Additional courses organised by demand

Contact

Robyn Grace

03 9889 4768

robyn.grace@spaldingaustralia.com.au



FIVE REASONS TO CREATE A PEER SUPPORT RELATIONSHIP

SPEECH PATHOLOGISTS HILARY CLEATOR AND ELAINE LANG SHARE HOW THEIR PEER SUPPORT RELATIONSHIP HAS ENRICHED THEIR CAREERS.

SOME MONTHS AGO a colleague and I began meeting regularly at a local cafe. We had gotten to know each other during meetings of speech pathologists working in private practice in the area where we live. Over coffee we would talk mainly about personal and social matters although professional issues became increasingly prevalent in our conversations.

Having each previously worked as a speech pathologist for around ten years in the public health system, we had experienced the value of discussing professional issues with colleagues on a regular basis. Now in private practice, the opportunity to be involved in such discussions was limited. It soon became clear to us that discussing professional issues was fulfilling an important role in the running of our respective private practices. As a consequence, we decided to formalise our meeting arrangements. Now we meet during each school holiday and allocate a certain period of time to focus exclusively on professional issues.

SUPPORT

Our meetings provide a safe, trusting environment in which to share openly and truthfully areas of concern we might have regarding the running of our respective practices. Within the context of our peer support relationship we are provided with an opportunity to discuss clinical issues relating to client management and to seek a second opinion where necessary.

TRUST

Trust is at the core of our peer support relationship. Our meetings provide an opportunity to voice our perceived limitations along with strengths and to air grievances and frustrations in confidence.

PROFESSIONAL DEVELOPMENT

During the meetings, we frequently discuss journal articles and new assessments, as well as keep abreast of ever-changing administrative issues relating to private practice. The meetings offer an opportunity to clarify and explore these issues thoroughly.

EXPLORATION

Our peer support meetings also give us an opportunity to float and explore ideas, thoughts, and clinical perspectives. We are provided with the freedom to discuss sensitive issues relevant to professional practice that might not otherwise be raised within the context of a larger group of speech pathologists.

DIVERSITY

While our private practices share many similarities there is also significant diversity within the two caseloads. This allows for interesting discussions as we share with each other our knowledge of specific areas of clinical interest. The peer relationship meetings offer an opportunity to float innovative ideas and explore their practical application to our respective areas of interest.

The readiness with which we have embraced and mutually benefited from our peer support relationship seems to indicate that we both felt a need for this additional professional interaction. After working in private practice for over sixteen years, it is hard to understand why we didn't do it sooner.

HILARY CLEATOR
ELAINE LANG

National Office has a **1300 368 835** number to support members within Australia to have equity in telephoning National Office for the cost of a local call. When phoning about SPA Events, please have your SPA member number ready to help us to assist you as efficiently as possible.

NATIONAL TOUR

THE 2016 SPA National Tour speaker will be Dr Jade Cartwright who will present *Dementia is Our Business: Speech Pathology Services for People Living with Dementia across the Continuum of Care* in a one day workshop.



The Association is looking forward to Jade sharing her knowledge, experience and vision for the future to expand speech pathology and communication services for people living with dementia in Australia.

Registrations are now open for the National Tour workshops in Adelaide on **Monday 7 March**, Perth on **Wednesday 9 March** and Brisbane on **Monday 18 April 2016**.

To find out more, go to the National Tour webpage of the SPA website.

BRANCH VOLUNTEERS

SPA CPD activities are supported by a strong and wonderful team of volunteer SPA members in each Branch.

- ACT Leah Hanley
- NSW Christine Sheard
- NT Erin Coonan
- QLD Joanne Wilkinson and Sarah Goodman
- SA Barbara Lyndon
- TAS Nicole Hatch
- VIC Kate Bridgman and Linda Crisci

- WA - Kelly Robinson

Many thanks to all the members who volunteer their time, knowledge and support through their active involvement in their Branch CPD committees.

PROFESSIONAL SELF REGULATION

PRACTISING AND FULL-TIME postgraduate student members of Speech Pathology Australia are eligible to participate in PSR and earn Certified Practising Speech Pathologist (CPSP) status.

- With your 2016 membership renewal, an annual program commences.
- To renew as a certified practising member, you need to achieve a minimum of 20 points per annum, across at least two different activity types.
- As of 2015, new graduate speech pathologists can earn Provisional CPSP in their first year of joining as/upgrading to Practising membership. The member application form includes an agreement to undertake a minimal level of clinical supervision, and undertake professional development, as part of the Professional Self Regulation program, to be conferred with Provisional CPSP status.
- As of 2016, CPSP status, full and provisional, will be deemed as the requirement to be considered a practising member, and therefore eligibility for Medicare and Private Health fund Provider Number registration, as well as other practising membership entitlements. Further information is available via the SPA website under Information for Members - Professional Self Regulation (PSR).

SHARON CRANE

Senior Advisor Professional Education & Certification (CPD & PSR)

NEW CPD LEADER FOR TASMANIA

WE WELCOME THE NEW CPD Leaders in the ACT, Queensland and Tasmania, including Nicole Hatch, the incoming Tasmanian CPD Leader.

"My name is Nicole Hatch and I'm excited to be taking on the CPD leader role for the Tasmanian Branch in 2016. I work as part of the Tasmanian Health Service, Southern Region. Previous CPD leaders, including my predecessor Alison, have worked hard to provide us with PD opportunities reflective of a much larger population and we are extremely grateful.

I look forward to continuing their work in providing support and coordination to continue to attract high quality

presenters and experts from the Speech Pathology field.

In 2016 we will also be arranging for groups who are interested to meet and view the CPD live events. These will run similar to a book club but for CPD. You can sign up and view the presentation at your leisure beforehand, then meet with other Speech Pathologists to discuss the ideas presented. Please keep a lookout for further details about these.

We are extremely appreciative of all of the work and support National Office has given to our small branch and the 3 CPD planned events for 2016, which cover both adult and paediatric topics of interest. Having access to 3 events is a

first for the Branch so a huge thank you to National Office and their support with the budget allocation. Hoping this year is a fabulous one!"

NICOLE HATCH
TAS CPD leader



POSITIVE RESPONSE TO SPEECH PATHOLOGY 2030

THE OVERWHELMINGLY POSITIVE response to the *Speech Pathology 2030* project confirms what we already knew—speech pathologists are extremely interested in the future of their profession.

The nominations for thought leaders were insightful and wide-ranging. With over 200 nominations it has been a challenging task to shortlist to 20 individuals. Interviews are underway and it has been tremendously encouraging to hear the insights these 'thinkers' have about the future of our profession.

A full wrap up of the thought leader interviews will be included in the April edition of *Speak Out*.

Interviewing clients has also been a task that the project team has described as both interesting and a privilege. The clients have consistently commented on how pleased they are to be involved in the project. Each of them has a powerful voice and an important message for us as we contemplate the future of our profession.

As one client observed, “with the emphasis on technology now I hope speech pathologists never lose their recognition of the client and their relationship as being absolutely central to everything they do”.

What a great start to the *Speech Pathology 2030* project.

Let's all continue to work together on *making futures* happen for our profession.

GAENOR DIXON
National President

Speech
Pathology
2030
making futures happen



“My speechie has given me my voice back and continues to help me over all the humps and bumps along the way. I'd be absolutely lost without her.”



Speech Pathology 2030 - project stages

1. Perspectives from beyond the profession

An important component of the project will be building an appreciation of the issues facing the speech pathology profession from the perspective of individuals who are not members of the profession. Client and thought leader interviews are currently underway. Thank you to all who have supported this stage of the project.

2. Understanding the landscape

Having a thorough understanding of the current landscape, including a snapshot of the speech pathology profession, and the drivers of change is an important starting point for the project. A document summarising the current landscape will be published soon on the Speech Pathology Australia website. It will also be distributed to individuals attending the *Conversations about the future* events.

What you can do during February 2016

READ the *Understanding the landscape* document.

SHARE the document with your colleagues.

3. Conversations about the future

The *Conversations about the future* events will be speech pathologist led conversations about your aspirations, dreams, concerns, goals etc. for the future of the speech pathology profession. You can be involved in these events by either nominating to host an event or by attending an event. Feedback received from the events will be collated and summarised, and used to inform a series of workshops/teleconferences held around the country during April 2016.

What you can do during February & March 2016

HOST a *Conversation about the future* event

ATTEND a *Conversation about the future* event

INVITE a friend or colleague who isn't a SPA member to attend one of the upcoming events.

COMPLETE a *Conversation about the future* event survey.

4. Imagining possible futures

Exploring the elements of a preferred future vision will involve categorising the key concepts emerging from the prior project stages and developing a set of possible futures. This stage will involve speech pathologists participating in a number of workshops to be held in various locations around the country.

What you can do during April 2016

ATTEND an *Imagining possible futures* workshop

5. A vision to aspire to

The final stage of the project will involve speech pathologists from around the country attending a workshop at the SPA National Conference to focus on developing a coherent vision of a preferred future for the speech pathology profession.

What you can do during May 2016

ATTEND the *Speech Pathology 2030—A vision to aspire to* workshop at the SPA National Conference 2016 in Perth.

6. Launch of the Speech Pathology 2030 report

Speech Pathology 2030 – Making Futures Happen

What you can do during August 2016

ATTEND the launch of the report: *Speech Pathology 2030 – Making futures happen* (Details to be advised).

If you would like more information, or would like to host or attend an event as part of *Speech Pathology 2030* visit the website and follow the links.

For further information or details contact Christine Lyons at clyons@speechpathologyaustralia.org.au.

Gail Mulcair
Chief Executive Officer

CHRIS LYONS
Senior Advisor Professional Practice



www.speechpathologyaustralia.org.au/makingfutureshappen



JOIN US

CALL FOR EXPRESSION OF INTEREST

FIBROPTIC ENDOSCOPIC EVALUATION OF SWALLOWING (FEES) CLINICAL GUIDELINE - REVIEW

Suitably qualified members of Speech Pathology Australia are invited to submit an Expression of Interest to join a working party to revise the SPA FEES Clinical Guideline.

The FEES Clinical Guideline was first published in 2007. This guideline is intended to guide speech pathologists, employers, consumers, policy makers and professionals in the implementation of FEES in Australian healthcare contexts. Speech Pathology Australia is currently reviewing the Speech Pathology Australia FEES Clinical Guideline.

If you are interested in being a member of this working party, please send submit an EOI including the following information:

- Curriculum Vitae
- Brief statement (500 words maximum) outlining your experience in FEES:
 - Clinical – application of FEES with specific clinical populations, clinical settings
 - Education and training
 - Service development
 - Research

Please forward your EOI via email to the Project Officers, Michelle Cimoli and Rhonda Holmes michelle.cimoli@austrin.org.au by February 26, 2016.

SURVEY REMINDER

Thank you to members who have already completed the survey regarding the current FEES Clinical Guideline. If you are familiar with the current SPA FEES Clinical Guideline, please consider completing the survey via the following link: www.surveymonkey.com/r/RL3RR86 The link to this survey will close on February 19, 2016.

MICHELLE CIMOLI & RHONDA HOLMES
Project Officers- FEES Clinical Guideline

RECRUITMENT & SELECTION IS THIS A TRIAL OR PAID WORK?

SOME ORGANISATIONS, as part of their recruitment and selection process, will require an applicant to be able to demonstrate certain specific skills in the workplace. This trial can assist an organisation in making a final decision about whether to proceed with an application and make an offer of employment.

Sounds simple; well, not necessarily. A number of clauses in the Fair Work Act are not always precisely defined and are open to interpretation. One of these is the unpaid work trial. Therefore, it is critical for an organisation to minimise its risks and ensure they are clear about what an appropriate work trial is and when it may be construed as paid work.

An unpaid work trial is acceptable when it involves no more than a demonstration of the person's skills, where they are directly relevant to the vacant position. The trial should only be for as long as needed to demonstrate the skills required for the job and is dependent on the nature and complexity of the work.

Generally, the accepted length of an unpaid trial is anywhere from one hour to one shift. It is also a prerequisite that the person doing the trial is directly supervised for the entire trial.

If, as part of your recruitment and selection process, you require an applicant to demonstrate their skills and carry out a trial then you need to ensure that

- they are supervised at all times,
- the trial period is just a demonstration of their skills,
- the skills they are demonstrating are not an activity that benefits the organisation or a paid staff member would ordinarily carry out.

If your organisation requires a candidate to go through a trial process as part of the recruitment and selection process and you are concerned about the risk that it could be claimed as paid work by an applicant, it would be worth considering introducing a paid trial period.

When recruiting a new employee there are a number of factors to consider and each new appointment will have its risks. It is important to remember that there are a range of ways to engage a new employee. You can initially employ someone in a casual capacity until such time as you are confident that they have the skills and competencies for the position. If you do employ someone permanently, you can stipulate a six month minimum employment period (probationary period) to determine if the employee is suitable for ongoing employment.

If you require an applicant to do unpaid trials as part of your recruitment and selection process, ensure the trial period is clearly defined and does not require you to pay wages.

Members can contact WorkPlacePLUS for initial free assistance and guidance about meeting your legal and ethical workplace obligations. Anna Pannuzzo 0419533434 or anna.pannuzzo@workplaceplus.com.au





A REFLECTION: ETHICAL THEMES FROM 2015

REFLECTION IS ONE METHOD we use to ensure that we are learning from our experiences, so with that in mind here is a summary of the themes from contacts with members during 2015, regarding ethical issues or concerns.

Top six themes (starting with the most frequent):

- Appropriate advertising of speech pathology services
- Duties to our colleagues including employment conditions, including access to professional support
- Operational issues, e.g. informed consent, maintenance of clinical records, writing medico-legal reports, confidentiality
- Professional integrity, including relationships with colleagues
- Clinical competency
- Volunteering and provision of speech pathology services by students.

Identification of the themes then lead to further examination to understand why those ethical issues are occurring within the profession. Another purpose was to ensure appropriate information is available to support members in maintaining professional and ethical standards of practice.

Additional information regarding three key themes:

1. ADVERTISING OF SPEECH PATHOLOGY SERVICES

The large number of contacts within this theme reflects the implementation of the new Code of Ethics — Advertising policy from 1 July 2015. The policy can be found on the SPA website, www.speechpathologyaustralia.org.au, along with a FAQ, www.speechpathologyaustralia.org.au/information-for-members.

It has been fantastic to observe how the profession has embraced the new policy, which has resulted in a variety of changes to the advertising used by a number of members, and reinforces the reputation of our profession. Members who continue to require support to apply the policy to their

advertising will be contacted as appropriate.

2. EMPLOYMENT CONDITIONS

Contacts with members on this topic were predominantly in a few core areas, and the most significant number related to access to appropriate professional support. New graduates and early career speech pathologists working in private practice are keen to access appropriate types and levels of support to develop their knowledge and skills, and, as described in the Supervision Standards, participation in supervision is "a core speech pathology practice activity and responsibility for all speech pathologists". As the standards also state, "Good quality supervision is central to the development and maintenance of high standards of speech pathology practice".

Members can access information on the website regarding supervision standards and practical resources, and Meredith Prain, Professional Support Advisor, is also available at National Office for assistance and support. www.speechpathologyaustralia.org.au/library/Supervision/

3. PROFESSIONAL INTEGRITY, INCLUDING RELATIONSHIPS WITH COLLEAGUES

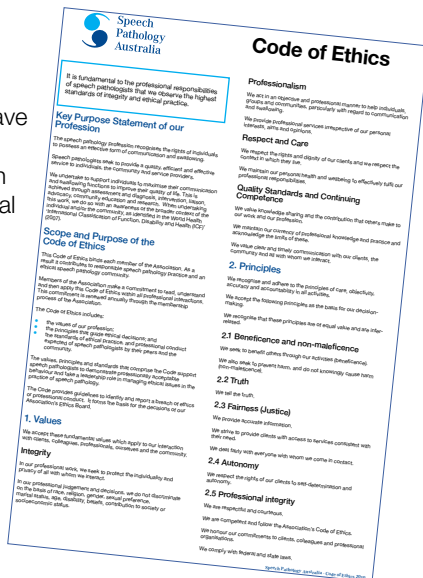
The Code of Ethics (2010) describes the values of integrity and professionalism which we apply to our interactions with our colleagues, as well as other people we interact with while providing professional services. The Code includes specific principles and standards relating to this area of professional practice, in particular, the principle of professional integrity and the standards detailed in the sections on concerning Duties to our Employers, Duties to our Profession and Ourselves, and Duties to our Colleagues.

Our professional relationships with our colleagues are integral to maintaining high standards of professional practice, as the

"Our professional relationships with our colleagues are integral to maintaining high standards of professional practice..."

outcomes for our clients are supported through respectful interactions, working co-operatively and supporting each other. When we work in an environment where appropriate professional relationships are maintained we can increase our knowledge and enhance our practice through sharing, discussing and exploring ideas. The focus can be on collaborating to develop professional knowledge and skills as well as working together to solve problems.

It is positive and encouraging that the majority of contacts I have with members involve the proactive discussion and exploration of ethical issues, such as those above, not specific complaints regarding professional practice. A3 posters of the Code of Ethics are available for members – please contact National Office to request a copy.



NEW VOLUNTEERING POSITION STATEMENT

The position statement *Volunteering in Speech Pathology* is now available on the [SPA website](#).

This new position statement will be useful to those who may be considering undertaking a volunteer role, or if you have received requests for volunteering opportunities within your practice. A FAQ document has also been produced to assist members interested in volunteering within the profession.

As can be seen from the themes above identified in contacts with members regarding ethical issues, volunteering is becoming an increasing topic of discussion within our profession. For any queries regarding volunteering in speech pathology, please contact Trish Johnson, Senior Advisor Ethics and Professional Issues at National Office, or tjohnson@speechpathologyaustralia.org.au.

TRISH JOHNSON

Senior Advisor Ethics and Professional Issues

REDUCING ISOLATION – A PEER SUPPORT APPROACH

WORKING AS A SOLE CLINICIAN for a region constituting a quarter of New South Wales can be challenging and daunting at the best of times, let alone as a new graduate. Opportunities to connect and share knowledge with peers can be limited and even with formal supervision and mentoring structures in place, the experience can at times be isolating. It's with this in mind that the workplace of clinician Kristyn established a peer support agreement, linking her with a metropolitan-based new graduate speech pathologist within the same organisation.

The arrangement provided an informal forum to connect, share experiences, resources and knowledge on an as-needed basis. Over the course of a year, it also helped foster a deeper understanding for both clinicians of wider speech pathology practice and the shared and differing challenges faced by metropolitan, rural and remote clinicians.

Kristyn was paired with Jessica, a fellow new graduate clinician based in metropolitan Western Sydney. Initial contact involved a comparison of caseloads and service provision models where it was noted that:

- Kristyn covered clients living up to 450km from her office, while Jessica covered clients living up to 40km from hers.
- Kristyn's service provision model predominantly involved home and community-based outreach clinics, while Jessica's held a mixture of centre, home and community-based appointments.
- 90 per cent of Kristyn's caseload was comprised of clients who spoke English as a first language, whilst 90 per cent of Jessica's caseload was comprised of bilingual and multilingual clients with English as a second language.
- Kristyn provided support to a range of Indigenous clients.
- Jessica's caseload was predominantly comprised of clients from refugee backgrounds.

It was agreed that fortnightly phone check-ins would be made with email contact as needed.

There were several benefits to the peer support arrangement, including:

- Reducing the sense of isolation,
- Being able to share experiences as new graduates in the field
- Sharing personal and site resources, current research and professional development
- Discuss issues related to work contexts e.g. approaches to client management
- Networking.

In workplaces where such an arrangement may not be viable, Kristyn and Jessica suggest linking in with SPA's Member Communities and the Mentoring Program. Further information can be obtained through the [SPA website](#).

JESICA RENNIE

NSW e-News and Speak Out Editor



Katarina Byrne, Michelle Rakuljic, Vanessa Greenberg and Pippa Evans, University of Sydney students 2014; and Megan Horner, James Cook University student 2014.

POSITIVE OUTCOMES FOR SERVICE LEARNING MODEL

COMMUNITY-CAMPUS PARTNERSHIP SERVICE LEARNING MODEL: SPEAKING EASY FOR LIVING AND LEARNING (SELL) IN KATHERINE, NT

RURAL AUSTRALIA'S INEQUITY of access to early intervention allied health services such as speech pathology is indisputable. Only 4.5 per cent of speech pathology practitioners provide services to rural communities, while these communities constitute 30 per cent of the total Australian population. A growing body of evidence is identifying the detrimental impacts of undiagnosed and untreated communication disorders on the social, education, health, and economic attainment of children in adolescent and adult stages of their lives.

In 2013, Partners in Katherine started a community-campus partnerships service learning model. Partners included Flinders Rural Clinical School, Clyde Fenton Primary School, James Cook University, University of Sydney, The Smith Family, Binjari Community, Kalano Community and Broken Hill University Department of Rural Health. Over the past three years, final year speech pathology students have provided speech and language assessment and therapy for children and families within a primary school. Students also assisted with referrals to community and health services, and contributed to teachers' and teaching staff professional development.

The positive outcomes of the project are already evident. Teachers report that families are engaging with the school and tackling previously un-addressed speech and language problems. Other community organisations have become aware of the value of these initiatives and are contributing to the program's expansion. The speech pathology students improved their understanding of program design and the issues affecting Aboriginal children's learning outcomes.

All students completing their placement have developed confidence and competence at working cross culturally.

An individual Goal Attainment Scale (GAS) tool tracks the progress of each pupil over time. This tool is criterion-referenced and enables incorporating clinical, school-based, and Community/family-based goals into the student speech pathologists' therapy plan(s). The GAS evaluates and measures even small improvements in clients skills during their therapy block across clinical, school-based and home-based objectives. Measurement was important given the client-base and their developmental issues around ESL, disability, and social health factors. With this tool we have demonstrated some exciting clinical outcomes for pupils as a direct result of access to the student-led clinical service at Clyde Fenton Primary School.

The project demonstrated that this service learning model can be used in a primary school setting to meet Community identified needs, and to provide valuable learning opportunities for students and partner organisations. The program enables access to speech pathology services and can be extended to incorporate other allied health disciplines. This model is also expandable to other primary schools locally. It could easily transfer to other rural and remote locations with limited access to childhood allied health services, to address developmental vulnerabilities that impact on education and health.

If you would like a reference list please contact Trish Maroney at trish.maroney@flinders.edu.au.

TRISH MARONEY & DR PASCALE DETTWILLER
Flinders University, Katherine Site

NETWORKING EVENT

THE WA BRANCH held a successful student speed working event in early December. This was the third year of the event and as in previous years, it was a success from the get-go.

The event continued with the same light-hearted speed-dating or speed networking format with students having around 10 minutes at each table before transitioning. Over 40 students rotated between tables covering topics including private practice, securing your first job, research opportunities and career journeys. Members of the WA profession were invited to speak on these topics at each table and answer new graduate questions. Preliminary feedback revived on the evening was positive with new graduates and speakers saying how interesting and enjoyable the experience was. Thank you again to our guest speakers for their generosity in sharing their knowledge and experiences and contributing to the ongoing success of this event.

The Branch AGM was held on 7 December following the student speed networking event. A wonderful attendance of over 70 members ensured this continues to be a very well-attended event on the WA calendar. The achievements of the WA Branch were celebrated. An overview of progress to date on strategic plan projects was provided with exciting events flagged for 2016. This included the Consumer Forum on 2 March which will scope interest in establishing a parent led advocacy/support group for children with SLI. Successful events included the Research and Wine Night, the launch of Speech Pathology Week and representation at expos were all



highlighted—as was the ongoing contribution our student members bring through their community fundraising and student events.

The achievements of students and educators were celebrated in an awards ceremony. Congratulations to all award recipients.

- Speech Pathology Australia Prize Most Outstanding Clinical Performance Curtin University (Speech Pathology)—Rhiannon McComasky
- Speech Pathology Australia Prize Most Outstanding Clinical Performance Edith Cowan University Bachelor of Speech Pathology—Adele Houghton

I'd like to take this opportunity to once again thank the WA Branch Executive of 2015 for their dynamic, energetic contributions and hard work that led to so many achievements within the Branch. Farewell to our outgoing Executive Members Naomi Cocks and student representatives Pei Chia Boong and Sarah Grunwald and welcome to our incoming volunteers—here's to another exciting year.

SHELLEY VIVIAN
WA Branch Chair

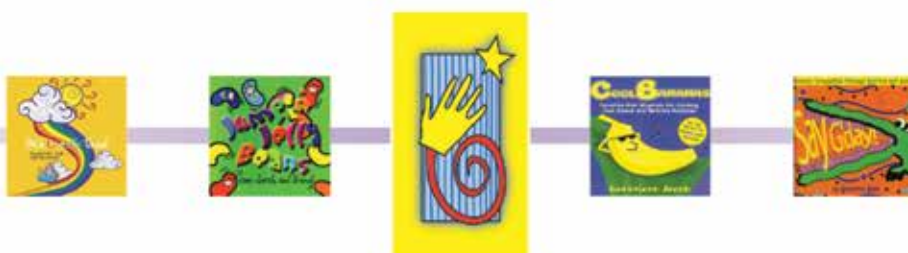
SensoryTools.net



Sensory Tools offers leading-edge treatment courses and products that specifically address issues associated with Sensory Processing, Autism, Asperger's, ADD/ADHD, Learning Difficulties, Behavioural and other Developmental Challenges.

Founded by Genevieve Jereb O.T. (International speaker and songwriter), we feature her music and the innovative workshop **The Traffic Jam In My Brain** (Presented Live and Online).

Shop Online Today!



SA: THE YEAR THAT WAS



MONDAY 7 DECEMBER saw approximately 35 South Australian SPA members meet to celebrate the year that was 2015. The SA Branch Executive AGM was held at The Caledonian Hotel, North Adelaide and included the welcome of our new speech pathology graduates from Flinders University. Members were invited to celebrate the festive season and the graduation of our new colleagues with fellow SPA members.

The evening was a huge success, with plenty of opportunities for chat among new colleagues with a chance to catch up with friendly faces many had not seen since last year's AGM.

This year the main events include:

Speech Pathology 2030—making futures happen

Our Branch Chair Cathy Clark gave an inspiring presentation which included an overview of the project, highlighting the Conversations about the future event planning to be held in South Australia in 2016. Cathy's presentation captured the excitement that is the future of the speech pathology profession, inviting all members and non-members to take an interest in and be part of this unique project. Cathy will work closely with the Community Awareness and Member Engagement working groups during the year and further updates will be communicated to members via the Branch's monthly e-news, emails and via the Branch's Working Groups.

Community Awareness and Member Engagement

2016 will be a big year for the SA Community Awareness and Member Engagement Working Groups. After much collaboration toward the end of 2015, the Branch members feel much can be achieved. The Member Engagement Group have been working closely in 2015 with the new graduates to set up the New And Aspiring Speechies (NAAS) Group. With this group comes fresh faces and minds full of passion and excitement for connecting with others. The Community Awareness Group is looking to expand this year and what better way than to involve the commitment and enthusiasm of our new graduates in spreading the word about the work of speech pathologists in SA. One of the many plans for 2016 is to provide information to members in regards to setting up a support group for private practitioners, particularly with the introduction of the National Disability Insurance Scheme (in collaboration with NDIA/Disability Project Consultant Cathy Olson).

Thank you to everyone who came along and helped out with the end of year event. The evening was only successful because of the continuing commitment our Branch Members show for the committee. Please contact Administrative Officer Leonie Randall, leonie.randall@flinders.edu.au, or Branch Chair Cathy Clark, cathy.clark@sa.gov.au if you would like to find out more about being a part of the SA Branch Executive Committee. If you are interested in attending an executive meeting, the SA Branch meets on the first Wednesday of every month at 6pm. Please contact Leonie or Cathy for further information.

ABBIE AVERY

Community Awareness Working Group Leader

Grants to go rural

SUPPORT PACKAGES WORTH UP TO \$25,000

If you're a Speech Pathologist there's never been a better time to go rural. The Rural Health Professionals Programme (RHPP) offers up to \$25,000 to help cover relocation costs and job-related needs.



FIND OUT MORE
WWW.RHWA.ORG.AU/RHPP

FRESH FACES IN TASMANIA

AND FROM THE Christmas farewells and holiday wishes... WHOOSH... we find ourselves with fresh faces, looking at the year ahead.

And actually, we DO have fresh faces! It is with delight that we would like to introduce, to the Tassie members and to members across the country, three new players on the Tasmanian Branch Executive.

A very warm welcome to Ria Ferris, Emma Hazelwood and Rachael Zeeman. These fabulous women bring not only their fresh faces but also their abundant personalities and enthusiasm, and their clear minds. We are privileged that they

are willing to give up their time to serve the profession, the members and the Association. Welcome to all, ladies.

Tassie is entering 2016 with a full executive and an exciting project in *Where Does Speech Pathology Fit in Your Life?* This project is being designed to continue to build the profile of the profession over the next three years, and will stitch and weave very nicely into the early phases of the national project, *Speech Pathology 2030*.

Warm wishes to all,

ROSIE MARTIN
Tasmania Branch Chair

WELCOME TO THE NEW TASMANIAN BRANCH EXECUTIVE



RIA FERRIS

General Executive
Originally from the Sunshine Coast Qld, Ria moved to Brisbane to study and graduated from the University of Qld in 2009 with a Bachelor of Speech Pathology. Her first job

was a permanent position with Disability Services on the Sunshine Coast, probably the best office view that will ever be had! From there, she moved back to Brisbane, working in various disability specific teams with a focus on challenging behaviour and restrictive practices. At the end of 2014, Ria decided to have a sea change, sold her belongings, bought a small caravan, and began traveling Australia. That journey led her to a job in Launceston, where she has decided to remain due to the unquestionable beauty of the area, and more importantly the very tasty local produce. Her professional interests are in the areas of complex communication needs, AAC, and adult disability. Her personal interests are in good food, live music, crafters, and social justice. Ria is looking forward to becoming more of a part of the Tassie SLP team!



EMMA HAZELWOOD

General Executive
After eight years interstate, Emma has come full circle to her home town of Hobart, and now works in the same neighbourhood where she spent most of her childhood. She has worked in paediatric speech pathology for the past five years in private practice in Sydney and now in Hobart. Emma joined the executive after being inspired by exciting community projects, and is looking forward to being involved in new projects and plans to promote the profession over these next few years.



RACHAEL ZEEMAN

Publications Executive
Rachael completed her Bachelor of Health Science and a Master of Speech Pathology at La Trobe University in 2013. She returned to her home state of Tasmania in 2014 where she spent twelve months working in early intervention. Rachael is currently working for the Department of Education, pursuing her particular interests in speech and language difficulties, and complex communication needs in the paediatric population. Rachael is pleased to accept the publications role and is excited to be a part of the executive committee in 2016.

ACU EXCHANGE TO ROME

WHAT IS HUMAN DIGNITY?

DURING DECEMBER 2015-January 2016, we (Tammie and Sarah) along with 15 other students from various programs at Australian Catholic University (ACU) traveled to Rome for a 2-week exchange program. The program was housed at the Rome Centre, which is situated on Janiculum Hill in Rome. The centre accommodates housing, studying and research opportunities for students from ACU as well as the Catholic University of America (CUA).

The focus of the study tour was to complete the unit UNCC300: Understanding Self and Society: Contemporary Perspectives. This unit focused on human dignity and what it means to be a human person. Theoretical concepts were explored in class with discussions and tasks that invited students to think critically about human dignity and the world around us. Case studies used during classes were highly relevant to issues currently experienced by people in Rome and Europe in general; specifically marginalised populations such as the poor, refugees and the Roma people.

Theoretical principles were then experienced in context via community engagement visits to families and community groups. These visits were led by Claudio Betti, an influential figure and highly regarded member of the *Comunitat de Sant'Egidio*. *Sant'Egidio* was created in 1968, by a group of Roman high school students, to work with immigrant groups in Rome. The community promotes peace and friendship and advocates for the poor and minority populations including the Roma, prisoners and migrants to Europe.

Various facilities are run by *Sant'Egidio* such as a soup kitchen that aims to resemble a restaurant so that those who come can have a dignified meal.

As speech pathology students the program reinforced Speech Pathology Australia's Code of Ethics regarding the values, principles and standards of ethical decision making and professional conduct. In particular the values of integrity, professionalism, respect and care and the principles of beneficence and non-maleficence, fairness (justice), and professional integrity were reinforced via our Rome experiences.

One community engagement visit was to a government authorised Roma Camp, on the outskirts of the city. While it was challenging to see the living conditions at the Roma camp the residents were very welcoming and hospitable. Residents invited us into their homes (made from shipping containers provided by the government) and shared a toast of spumante. Pertinent to us as speech pathologists was that many Roma children never get the opportunity to attend school due to stigmatisation and a low socioeconomic background. If they do attend, they are ostracised and lack of support with almost all Roma children means they are generally unable to read in their first few years at school.

On New Year's Eve, we ventured out to the streets to distribute



food to the poor and celebrate the coming year with them. On New Year's Day we had the once in a lifetime opportunity to march alongside *Comunitat de Sant'Egidio* and refugees to St. Peter's Square for World Peace Day. We saw Pope Francis deliver his World Peace Day speech, which was both motivational and powerful. Afterwards, we went to the soup kitchen and shared a festive lunch with refugees from Africa and the Middle East, and heard about their stories. This experience again reinforced to us the principles and values of our profession to support those in need.

Finally, alongside our life-long learning opportunities, we had time to enjoy all that Rome has to offer and is famous for; a rich history and culture. As the Rome Centre is situated in Janiculum Hill (next to the bustling *Tretevere*), we were in close proximity to all the main attractions. We made our wish in the Trevi Fountain and visited the ancient ruins of the Roman Forum and the Colosseum. We walked through the Holy Door at St. Peter's Basilica and admired Michelangelo's breathtaking artwork on the ceiling of the Sistine Chapel. There was something to see on every corner, which was evident when we found ourselves at the Pantheon after getting lost. It is true that getting lost in Rome is an adventure.

Our two weeks in Rome was an amazing and unforgettable experience. The things we saw, the people we met and the knowledge we gained will never be forgotten. It was an eye-opening and motivational experience to say the least. It made us more grateful for what we have and more aware of the world around us. *Sant'Egidio* also taught us that you don't need to speak the same language to communicate. You can make new friends and support a community via other means. We communicated through play and song with children, used gesture and facial expressions, and showed friendship through our actions (such as distributing food and sharing a meal).

We would like to thank Kath Boyle and Teresa Brown, the two ACU teachers who accompanied us and taught us about human dignity. We'd also like to thank the Rome Centre for being so hospitable and providing us home-cooked meals everyday. A very special thank you to Claudio Betti, who guided us through the city and inspired us to all believe that we have the potential to make a change, not only as students but as future speech pathologists. *Ciao amici!*

TAMMIE TUN AND SARAH WALMSLEY
Year 4 ACU Speech Pathology students

SPA Social Scene

FACEBOOK

On 5 January 2016, National Offices' first week back, we posted what we thought was a fun, interesting story from the Conversation website titled "Togs or swimmers? Why Australians use different words to describe the same things". Proving speech pathologists never rest (even during the holiday period) the post was a ratings bonanza. It reached over 22,800 people, received over 140 likes, was shared 53 times and was commented on over 20 times. Speechies love to talk words, even if it is debating a potato cake or scallop.



TWITTER

Two days before Christmas a story was published in the media about a homeless man named Matte Dunn, which detailed his life on the streets of Melbourne, his emerging tourist information business and his desire to study his Masters in Speech Pathology. On Twitter, where engagements are typically smaller for SPA, it was retweeted six times and 'liked' eight.



INSTAGRAM

The Association has long been an advocate for improving the lives of people with communication and swallowing difficulties. 3 December 2015, on International Day of People with Disability, we showed our support on Instagram and our efforts were well received with over 70 likes. Engage with us and help spread the word of our vital industry.



Facebook: www.facebook.com/SpeechPathologyAustralia/

Twitter: @SpeechPathAus

Instagram: @SpeechPathAus

LUKE BUESNEL

Online Communications Officer




RRP is ONLY 90c per cup!

Hydrating pre-thickened drinks for those with dysphagia in ergonomically designed cups..

CONVENIENT AND REFRESHING

- Convenient 185mL serves
- 12 cups per carton
- Each flavour is available in the three Australian Standards recognised viscosities:
 - Green- Mildly thick | Level 150
 - Purple - Moderately thick | Level 400
 - Blue - Extremely thick | Level 900
- Flavours include Water, Lime, Citrus, Raspberry, Diet Raspberry and Diet Lemon



CALL TODAY for your FREE mixed Trial Carton.

QLD - Craig Llewellyn	0435949077
NSW- May Huang	0437873275
SA & WA - Krisen Pillay	0423561597
VIC & TAS - Phil Lane	0499302699
Christine Ramsay - National Key Account Manager -	0422571384

www.precisethickn.com.au
Email: admin@precisethickn.com.au
 Connect socially with us!
 on Twitter @PreciseThick_N
 Facebook, Instagram and YouTube.
 Precise - 54 Ron Boyle Crescent, Carole Park, Qld 4300

Your member benefits program

SPA members receive exclusive access to a range of benefits designed to make life a little easier and a lot more enjoyable.

Experiences & Gifts

Magazine Subscriptions

Insurance Policies

MAKE THE MOST OF YOUR SPA BENEFITS:

www.memberadvantage.com.au/spa

Accommodation & Tours

Airline Lounge Membership

Computers & IT

Car Hire

Foreign Exchange

