

2015  
**F150**



Courtesy of Ford Motor Company



# WE SET OUT TO BUILD THE BEST TRUCK EVER.

Simply put, this is the toughest, smartest, most capable F-150 ever.

**Better in every way that matters**, it accelerates faster and stops sooner. It tows more and hauls more.<sup>1</sup> And does it more efficiently. Equipped with plenty of purpose-built advancements and safety innovations, it is the ultra-capable pickup of the future. Built Ford Tough® to take you everywhere you need to go.

**Industry-first features** make your work even more productive. Smart technologies help you tow, haul and move with ease. Advanced new safety measures bring renewed confidence, both on the road and on the job. And with fuel efficiency<sup>2</sup> of 9.5 km/L, it lets you do more with less.

**More capable. More efficient. Than ever.** Introducing the all-new 2015 Ford F-150. The Future of Tough begins today.



LARIAT SuperCrew® 4x4. Ingot Silver Metallic. LARIAT Sport Package. Available equipment.

<sup>1</sup>When properly equipped. <sup>2</sup>Data as per GCC Standardization Organization certification.

**THE ALL-NEW  
2015 FORD F-150**



# WE MADE IT LIGHTER, AND STRONGER, BY FORGING A NEW METAL.

High-strength aluminum alloys. Never before used in a pickup truck body and bed. Until now. Our innovation creates a 2015 F-150 that weighs up to 317 kg less than its predecessor. We collaborated with experts to forge this new metal. Then, through heat treating and by increasing panel thickness, we made it even stronger.

Making it ideally suited for the rigors of truck use. How so? It does not rust. It resists corrosion. It improves dent-/ding-resistance. And it sits on an all-new, fully boxed modular frame with more high-strength steel than ever. Enhancing stiffness. And durability. When you set out to build the best truck ever, it's no surprise what you end up with. A smarter way to work.



# WE TESTED IT MORE THAN EVER. PROVING IT'S BUILT FORD TOUGH.®

This is the most-tested F-150 ever. With its all-new materials and advanced technologies, we devised new ways to test it. And push it to the brink. From acid baths to unforgiving heat and abrasive desert sands, this truck has been through it all. And then some.

Taken to extremes in more punishing lab tests. And put through unrelenting real-world challenges from some of our hardest-working customers: fleets that run day and night. Before the first truck rolled off the line, over 16 million kilometers of testing helped get it ready for the most important test of all. Yours.



# A WIDE RANGE OF POWERFUL CHOICES.

Finding smarter, more efficient ways to get the job done defines the 2015 F-150.

**For 2015, there are 3 engines** to choose from. The direct-injection, twin-turbocharged 3.5L EcoBoost® V6<sup>1</sup> delivers remarkably balanced fuel efficiency and performance. The 3.5L Ti-VCT V6 is designed for impressive power and durability. And the proven 5.0L Ti-VCT V8<sup>1</sup> is known for its power and low-end torque. All are ready to handle whatever you throw at them.

**By improving power-to-weight ratios** across the lineup, each F-150 engine has more power to devote to your job. But that's not all. Light-weighting helps improve their fuel efficiency as well. As does twin independent variable camshaft timing (Ti-VCT). Plus Active Grille Shutters that close at cruising speed to reduce drag. A standard 6-speed automatic transmission and available SelectShift® automatic make power easy to engage.

**Engineered for long-lasting durability**, Built Ford Tough standards ensure that each engine is proven over millions of kilometers of harsh lab and real-world testing. Imagine how these tough standards can serve your needs.

## 3.5L EcoBoost V6

**For maximum capability**, this direct-injection, twin-turbocharged V6 delivers 90% of its peak torque at 1,700 rpm – which holds on strong up to 5,000 rpm.

**1,483 kg** – Max. payload capacity<sup>2</sup>

**5,534 kg** – Max. towing capability<sup>2</sup>

**385 net hp @ 5,250 rpm<sup>3</sup>**

**464 lb.-ft. of net torque @ 2,750 rpm<sup>3</sup>**

**9.5 km/L<sup>3</sup>**

## 3.5L Ti-VCT V6

**This highly capable standard engine** is designed for impressive power and durability. Twin independent variable camshaft timing (Ti-VCT) provides torque across a wide rpm range, as well as exceptional efficiency.

**866 kg** – Max. payload capacity<sup>2</sup>

**3,447 kg** – Max. towing capability<sup>2</sup>

**293 net hp @ 6,750 rpm<sup>3</sup>**

**250 lb.-ft. of net torque @ 5,250 rpm<sup>3</sup>**

**9.1 km/L<sup>3</sup>**

## 5.0L Ti-VCT V8

**Improved cylinder breathing** and new mid-lock variable cam timing improve fuel efficiency while maintaining this trusted V8's power and low-end torque. Cast exhaust manifolds and a unique engine oil cooler allow for heavy-duty use and durability.

**1,497 kg** – Max. payload capacity<sup>2</sup>

**5,035 kg** – Max. towing capability<sup>2</sup>

**385 net hp @ 5,750 rpm<sup>3</sup>**

**387 lb.-ft. of net torque @ 3,850 rpm<sup>3</sup>**

**8.7 km/L<sup>3</sup>**

*XLT SuperCrew® 4x4. Ingot Silver Metallic. Available equipment.*

<sup>1</sup>Available feature. <sup>2</sup>When properly equipped. <sup>3</sup>Data as per GCC Standardization Organization certification.



## TECHNOLOGY THAT'S SMARTER THAN EVER.

Strategically placed cameras.<sup>1</sup> Ultrasonic sensors.<sup>1</sup> Sophisticated radar.<sup>1</sup> F-150 can employ them all to help you navigate a crowded job site, avoid collisions, stay in your lane and more.

**Get a 360° view around your F-150** with our new 360 Camera with Split-view Display.<sup>1</sup> Great for navigating tight spaces, it works at low speeds in Forward and Reverse.

**Monitor blind spots** with BLIS® (Blind Spot Information System) with cross-traffic alert.<sup>1</sup> An amber light in the sideview mirrors<sup>2</sup> helps warn you when a vehicle is there.

**Parallel park easier** with our active park assist.<sup>1</sup> This system helps you find a spot, then steers your F-150 into it while you control the gear shifter, and brake and accelerator pedals.

**Get a heads-up** from adaptive cruise control and collision warning with brake support.<sup>1</sup> It helps maintain your choice of 4 preset gaps from the vehicle in front of you. It can also alert you to a potential collision by flashing a warning on the windshield (shown) and sounding an alarm. It also pre-charges the brake system.

**Four cameras let you see all sides of the truck** on the 8" color screen. A front or rear view fills the left side of the screen. The 360° view is on the right. Control what view you see by pushing the "camera" button above the display. Visual guides help you see how close you are to objects around the vehicle so that you can avoid them.

Driver-assist features are supplemental and do not replace the driver's attention, judgment and need to control the vehicle. <sup>1</sup>Available feature. Availability varies by market. Restrictions may apply. <sup>2</sup>BLIS replaces standard integrated blind spot mirrors.

# IN A TRUCK THAT'S SAFER THAN EVER BEFORE.

The all-new 2015 Ford F-150 is engineered to be the safest F-150 ever. Starting with a masterful mix of high-strength aluminum alloys that form an intricate safety cage around the passenger compartment.

**Front-impact protection is improved** through a new 12-sided design in the high-strength-steel front-frame horn, which helps to dissipate crash energy during a frontal impact. Additional through-welded crossmembers bolster side-impact protection. An extruded rocker reinforcement helps reduce cab intrusion in certain front- and side-impact collisions. Roof strength is reinforced by a hydroformed roof rail supported by an extruded closed-section roof bow.

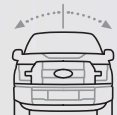
**Inflatable 2nd-row safety belts<sup>1</sup>** (for outboard rear-seat occupants) reduce injury risk in certain collisions by distributing crash force energy across 5 times more of an occupant's body. They join 6 standard airbags to enhance driver and passenger protection.



INFLATABLE REAR-SEAT SAFETY BELTS<sup>1</sup>



ROLL STABILITY CONTROL<sup>TM2</sup>



6 AIRBAGS



<sup>1</sup>Available feature. SuperCrew<sup>®</sup> only. <sup>2</sup>Remember that even advanced technology cannot overcome the laws of physics. It's always possible to lose control of a vehicle due to inappropriate driver input for the conditions.

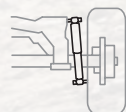
# THE NEW F-150 CARRIES MORE THAN IT EVER DID.

Any way you stack it, Ford F-150 carries the day. By taking weight out of the vehicle, we increased the amount you can put in it.

**Outstanding max. payloads.** When equipped with the 5.0L V8 engine<sup>1</sup> and Heavy-Duty Payload Package, F-150 has a 1,497-kg max. payload.<sup>2</sup> A similarly equipped F-150 with the 3.5L EcoBoost<sup>®</sup> V6 engine<sup>1</sup> has a max. payload of 1,483 kg.<sup>2</sup> And a comparably outfitted F-150 with the standard 3.5L Ti-VCT engine has a max. payload of 866 kg.<sup>2</sup>

**Improved pickup box access** makes managing any load easier. The 2,192 liters of cargo box volume<sup>2</sup> is easily accessed from steps on all 3 sides<sup>1</sup> of the vehicle. These include deployable box side steps<sup>1</sup> – available for the first time with the 5.5' box.

**Our next-generation tailgate step<sup>1</sup>** now fully integrated inside the tailgate, is virtually invisible when not in use. After customer input, our engineers improved it to drop down in one easy motion. They also designed the grab handle to store inside the tailgate, which creates a flat surface for easier loading and a convenient work surface when needed.



OUTBOARD SHOCKS



3 BOX SIZES

BOX



SIDE STEPS<sup>1</sup>

*XL Regular Cab 4x4. Caribou Metallic. XL Chrome Package. Available equipment.*

<sup>1</sup>Available feature. <sup>2</sup>When properly equipped.



# TOWS MORE TOO.

Tow more. Sweat less. With its high-strength-steel frame, torque-heavy engines and advanced technologies, the 2015 Ford F-150 helps keep your trailer where it belongs. In line.

**Maximum towing capacity** of 5,534 kg<sup>1</sup> is yours when you equip Ford F-150 with the 3.5L EcoBoost<sup>®</sup> V6 engine<sup>2</sup> and Max. Trailer Tow Package.

**Towing confidence in every cab type** results from the stabilization benefits of standard trailer sway control<sup>3</sup> and an integrated trailer brake controller.<sup>2</sup>

**Lock out upper gears** to maintain a consistent speed on steep grades with the progressive range select on our 6-speed SelectShift<sup>®</sup> automatic transmission with tow/haul mode.<sup>2</sup> For use when the truck is heavily loaded or when towing, which should be often with the 2015 F-150.

**To prevent you from rolling back** on a grade, standard hill start assist momentarily maintains brake pressure until the engine delivers enough torque to move F-150 up the hill. Trucks equipped with the trailer brake controller can automatically apply the trailer brake too.



LARIAT SuperCrew<sup>®</sup> 4x4. Ingot Silver Metallic. Available equipment.

5,534 kg  MAX. TOWING<sup>1</sup>

CONTROLS  SWAY

HILL START  ASSIST

Driver-assist features are supplemental and do not replace the driver's attention, judgment and need to control the vehicle. <sup>1</sup>Maximum capacity when properly equipped. See your Ford Dealer for specific equipment and other limitations. <sup>2</sup>Available feature. <sup>3</sup>Remember that even advanced technology cannot overcome the laws of physics. It's always possible to lose control of a vehicle due to inappropriate driver input for the conditions.



## WITH MORE FUNCTIONALITY THAN EVER.

Innovative new features make it easier than ever to tow, access and manage your load in a 2015 Ford F-150.

**Dynamic Hitch Assist** enhances the rear view camera.<sup>1</sup> Based on steering angle, both the dashed black line and the curved white lines show your projected path to help you easily line up truck and trailer – without a spotter.

**Our factory-integrated trailer brake controller**<sup>1</sup> uses braking input, vehicle speed and information from the Anti-Lock Brake System (ABS) to balance the performance of the truck and electric trailer brakes.<sup>2</sup>

**A Smart Trailer Tow Connector**<sup>1</sup> provides you with trailer connection status, plus lighting and trailer battery alerts and warnings. Whether a trailer bulb goes out or another item needs attention, alerts are displayed in the instrument cluster.

**BoxLink™<sup>1,3</sup> with locking cleats** vastly improves functionality of your pickup box. First, box sides are fortified to allow you to tie down items to the walls. Interface plates inside the box allow you to attach S hooks, E-Track™ straps and more. 4 removable and lockable premium cleats provide additional tie-down points to securely and flexibly tie down your cargo.

**Stowable ramps**<sup>1</sup> are another feature used with BoxLink that allow you to load dirt bikes and ATVs easily – without having to lift them. When done, stow the ramps with BoxLink.

**Deployable box side steps**<sup>1</sup> allow access to each side of the pickup box. Available for the first time on all bed lengths, each rugged step can hold up to 227 kg.

**Our industry-first remote tailgate release**<sup>1</sup> with power remote locking opens the tailgate with your key fob. Lock, unlock and gradually lower it to a flat position, hands-free.

**Innovative LED box lighting**<sup>1</sup> smartly illuminates the cargo box with forward-facing LEDs embedded in the rear. Turn them on to help you quickly find tools and other items. Particularly helpful with a tonneau cover.<sup>1</sup>

<sup>1</sup>Available feature. <sup>2</sup>Trailer brake controller verified to be compatible with electrically actuated drum brakes and certain electric-over-hydraulic brake systems. See your Ford Dealer for details. <sup>3</sup>Availability varies by market. Restrictions may apply. E-Track is a trademark of Erickson Manufacturing Limited.



## DELIVERS A QUALITY EXPERIENCE.

The completely redesigned cabin of F-150 works hard, starting with your choice of 5 distinct trim levels: the work-tough XL, rugged XLT, well-appointed LARIAT, bold and rugged KING RANCH™ and luxurious PLATINUM. One is sure to be just right for you. There's more storage space in the center console<sup>1</sup> and front row. A vast twin-panel moonroof<sup>1</sup> on SuperCrew.<sup>®</sup> All-new 8" productivity screen<sup>1</sup>. And so much more.

**Exceptional refinement** defines the interior. Ergonomically optimized front seating enhances comfort. SuperCab and SuperCrew models with the 40/20/40 split front-seat configuration seat up to six. Large, squared-off air vents mimic the chiseled exterior, while an all-new climate control system filters air entering the cabin by sending it through a particulate cabin filter. And a redesigned, power-sliding rear window<sup>1</sup> provides natural ventilation.

*PLATINUM. SuperCrew 4x4. Brunello luxury leather trim. Available equipment.*

<sup>1</sup>Available feature.



## CONNECTS YOU TO WHAT MATTERS MOST.

Voice-activated Ford SYNC<sup>®1</sup> delivers hands-free calls, music and more with simple voice commands. Once paired with your phone, it can download your contacts and play music. Or, plug in your MP3 player, USB or iPod<sup>®</sup> to listen to your favorites. SYNC. Say the word.

**Add an 8" color touch screen and more** with SYNC with MyFord Touch<sup>®1</sup> and upgrade to the voice-guided Navigation Radio System.<sup>2</sup>

| SYNC

*PLATINUM. SuperCrew<sup>®</sup> 4x4. Brunello luxury leather trim. Available equipment.*

<sup>1</sup>Available feature. Driving while distracted can result in loss of vehicle control. Only use SYNC/MyFord Touch/other devices, even with voice commands, when it is safe to do so. Some features may be locked out while the vehicle is in gear. Not all features are compatible with all phones. <sup>2</sup>Available feature. Availability varies by market. iPod is a trademark of Apple Inc., registered in the U.S. and other countries.



## ENHANCES WORK. DAY AND NIGHT.

All-new features on the 2015 F-150 join some established favorites to help you get more done, more easily.

**Natural lighting from the new twin-panel moonroof<sup>1</sup>** accents standard LED lighting inside F-150. Outside, innovative LED sideview mirror spotlights<sup>1</sup> light your work site well into the night. Integrated into the mirrors, the spotlights provide the light needed to set up a campsite or finish a job after sunset. They join new quad-beam LED headlamps<sup>1</sup> and LED taillamps<sup>1</sup>.

**Power up F-150 without turning a key** with Intelligent Access with push-button start.<sup>1</sup> As long as you have the fob in your pocket, you can enter F-150 and start it. Power up tools and battery chargers with high-power 110-volt power outlets<sup>1</sup> that provide up to 400 watts.

**Enjoy easy access to it all** through SuperCab rear doors that swing open 170° – with no B-pillars to obstruct entry or loading. Utilize the full-flat load floor,<sup>2</sup> or convenient rear underseat storage.<sup>1</sup>

**The 8" color productivity screen<sup>1</sup>** is your new command center. Tabs at the top make navigation easy. Keep favorites front and center with MyView. Just choose the screens you use most often (up to 7) and put them in one consolidated view. Check actual pressure in each tire with the standard Individual Tire Pressure Monitoring System.<sup>3</sup> Not only will you be notified if any tire's pressure is low, but the system will tell you how low. Track towing information, such as vehicle pitch and steering angle, and profile up to 10 different trailers – including accumulated distance on each.

<sup>1</sup>Available feature. <sup>2</sup>On SuperCab and SuperCrew® models. <sup>3</sup>Excludes spare.

# ANYWHERE, AND EVERYWHERE, YOU NEED TO GO.

The reduced weight of F-150 results in many major benefits, including improved off-road capability. A substantially lighter vehicle gets over tough terrain with less effort.

**Equip your F-150 to get out there** with the FX4 Off-Road Package, which includes FX4 decals, and is available on all trim levels. An electronic-locking rear differential, Hill Descent Control,<sup>1</sup> and off-road-tuned front and rear shock absorbers get you ready for some serious, low-speed rock crawling.

**Monitor all the action** on the off-road display in the 8" productivity screen.<sup>1</sup> Check your truck's pitch, roll, steering angle and driveline status.

**To better navigate tight spots off-road,** just utilize the 360 Camera with Split-view Display.<sup>1,2</sup> Four cameras give you a 360° bird's-eye view around F-150, helping you maneuver down narrow off-road trails. To keep your view clear of dust and dirt, the forward-facing camera includes a lens washer that's activated when the windshield wiper washers are used.



ELECTRONIC-LOCKING  DIFFERENTIAL<sup>1</sup>

TRACTION  CONTROL

HILL DESCENT  CONTROL<sup>1</sup>

*XLT SuperCrew® 4x4. Ingot Silver Metallic. FX4 Off-Road Package. Available equipment.*

Driver-assist features are supplemental and do not replace the driver's attention, judgment and need to control the vehicle. <sup>1</sup>Available feature. <sup>2</sup>Can only be used at speeds up to 10 kph. Availability varies by market. Restrictions may apply.

# F-150 SPECIFICATIONS



LARIAT SuperCrew 4x2. Tuxedo Black Metallic. LARIAT Sport Package. Available equipment.

## STANDARD FEATURES

### Mechanical

60,000-kilometer tune-up interval (under normal driving conditions with routine fluid and filter changes)

Active Grille Shutter System (upper shutters with the 3.5L Ti-VCT V6 and 5.0L Ti-VCT V8 engines; upper and lower shutters with the 3.5L EcoBoost® engine)

Axle – Rear, non-limited slip

Brakes – Power 4-wheel vented-disc with ABS and electronic brakeforce distribution (EBD)

Easy Fuel® capless fuel filler

Exhaust – Stainless steel exhaust system (major components)

Fail-Safe Engine Cooling System

Fuel tank – 87-liter capacity

Fully boxed steel frame

Hill start assist

Horn – Dual-note

Jack – 2-ton mechanical

Spare wheel and tire with underframe winch with safety catch

Steering – Electric power-assisted rack-and-pinion

Suspension – Front, long-spindle, double-wishbone coil-over-shock, independent

Suspension – Gas-pressurized twin-tube front and rear shock absorbers

Suspension – Rear, 2-stage variable-rate leaf springs

Trailer towing – 4-pin connector and ball-mounting provisions in rear bumper

### Interior

Air conditioning

Assist/grab handles – Driver and right-front passenger

Assist/grab handles – Rear outboard positions (SuperCrew® only)

Cabin air filter

Coat hooks (2)

Cupholders – Front, 2 deployable under center seat or in floor console and 1 in each front-door map pocket

Front-door map pockets

Gauges for fuel, oil pressure, transmission and engine coolant temperature; tachometer; speedometer; and odometer

Glove compartment with light

Lighting – Fade-to-off interior lighting

Lighting – Front dome/map lights

Lighting – Illuminated entry

Power outlets – 12-volt powerpoint in front (all models) and rear (SuperCab and SuperCrew only)

**Smoker's Package** with ash cup

### Exterior

Pickup box – Black box top and tailgate moldings

Pickup box – Stake-bed pockets

Skid plates (4x4 only)

Stone guards – Black, front and rear

Tailgate – Lockable and removable

### Safety & Security

Personal Safety System™ for driver and right-front passenger includes dual-stage front airbags,<sup>1</sup> safety belt pretensioners, safety belt energy-management retractors, safety belt usage sensors, driver's seat position sensor, crash severity sensor, restraint control module and Front-Passenger Sensing System<sup>2</sup>

AdvanceTrac® with RSC® (Roll Stability Control™) and Curve Control

Airbags – Front-seat side<sup>1</sup>

Airbags – Safety Canopy® System with side-curtain airbags<sup>1</sup> for all rows and rollover sensor

Alert chimes for headlamps-on, key-in-ignition and safety belt

Belt-Minder® front safety belt reminder

Brake/shift interlock

Fuel pump inertia shutoff switch

Individual Tire Pressure Monitoring System (excludes spare)

LATCH – Lower Anchors and Tether Anchors for Children

Safety belts – 3-point in front (all models) and rear (SuperCab and SuperCrew only)

SecuriLock® Passive Anti-Theft System

Side-intrusion door beams (front on all models; front and rear on SuperCrew)

SOS Post-Crash Alert System™

Spare wheel/tire lock

Trailer sway control

## POWERTRAINS

	3.5L Ti-VCT V6	3.5L EcoBoost V6	5.0L Ti-VCT V8
Configuration	DOHC	DOHC	DOHC
Electronic fuel injection	Sequential multiport	Sequential direct	Sequential multiport
Induction system	Naturally aspirated	Twin-turbocharged intercooled	Naturally aspirated
Cylinders	6	6	8
Cylinder head	Aluminum	Aluminum	Aluminum
Block material	Aluminum	Aluminum	Aluminum
Bore/stroke	3.64"/3.45"	3.64"/3.45"	3.63"/3.65"
Compression ratio	10.8:1	10.0:1	10.5:1
Recommended fuel	Regular unleaded or E85	Regular unleaded	Regular unleaded or E85
Transmission	6-speed auto. with tow/haul mode	SelectShift® auto. with progressive range select and tow/haul mode	SelectShift auto. with progressive range select and tow/haul mode

	Regular Cab	SuperCab	SuperCrew	5½' Box Size	6½' Box Size	8' Box Size	40/20/40 split front seat	40/console/40 front bucket seats	40/console/40 front bucket seats with floor shifter
XL	■	□	□	□	□	□	■	□	□
XLT	■	□	□	□	□	□	■	□	□
LARIAT		■	□	□	□	□			■
KING RANCH®			■	□	□	□			■
PLATINUM			■	□	□	□			■

■ Standard □ Optional

<sup>1</sup>Always wear your safety belt and follow airbag warning label instructions. <sup>2</sup>Right-front-passenger seat only.

## XL

### Equipment Group 100A

*Includes all standard features, plus:*

#### Mechanical

3.5L Ti-VCT V6 engine and electronic 6-speed automatic transmission with tow/haul mode<sup>1</sup> (not available with SuperCab 164" WB and SuperCrew<sup>®</sup> 157" WB)

3.5L EcoBoost<sup>®</sup> V6 engine and 6-speed SelectShift<sup>®</sup> automatic transmission with progressive range select and tow/haul mode<sup>1</sup> (4x2 SuperCab 164" WB and 4x2 SuperCrew 157" WB)

5.0L Ti-VCT V8 engine and 6-speed SelectShift automatic transmission with progressive range select and tow/haul mode (4x4 SuperCab 164" WB and 4x4 SuperCrew 157" WB)

Electronic shift-on-the-fly (ESOF) with neutral towing capability (4x4 only)

Parking brake – Electric (3.5L Ti-VCT engine)

Parking brake – Mechanical (5.0L Ti-VCT and 3.5L EcoBoost engines)

Trailer towing – Class IV Trailer Hitch, 4-pin/7-pin wiring harness, and Smart Trailer Tow Connector

17" Silver steel wheels

245/70R17 BSW all-season tires (4x2 only)

265/70R17 OWL all-terrain tires (4x4 only)

#### Seating

Front – Cloth 40/20/40 split seats with folding armrest, 2-way manual seats, and 2-way adjustable head restraints

Rear – 60/40 split flip-up seat (SuperCab and SuperCrew only; one-touch flip-up)

#### Interior

AM/FM stereo with clock (includes 4 speakers on Regular Cab and 6 speakers on SuperCab and SuperCrew)

Climate controls – Manual single-zone

Display – 4.2" productivity screen in gauge cluster

Display – 4.2" audio and climate control screen in center stack

Display – Outside temperature and compass

Door-sill scuff plates – Black

Flooring – Black vinyl

Locks – Manual door and tailgate

Mirror – Day/night rearview

Steering column – Manual-tilt/-telescoping with manual locking

Steering wheel – Black urethane

Visors – Driver and front-passenger with passenger-side vanity mirror

Window – Rear, fixed glass with solar tint

Windows – 2nd-row fixed (SuperCab only)

Windows – Manual

#### Exterior

Bumper – Front, Carbon Black with Carbon Black molded upper fascia

Bumper – Rear, Carbon Black

Door and tailgate handles – Carbon Black

Grille – Carbon Black insert and surround

Headlamps – Halogen

Mirrors – Manual sideview with black mirror caps

Pickup box – 4 cargo tie-downs, black

Pickup box – Center high-mounted stop lamp with integrated cargo lamp

Tow hooks – 2 in front, black (4x4 only)

Windshield wipers – Intermittent

#### Available Options

##### Mechanical

3.5L EcoBoost V6 engine and 6-speed SelectShift automatic transmission with progressive range select and tow/haul mode<sup>1</sup> (not available with Regular Cab 122" WB)

5.0L Ti-VCT V8 engine and 6-speed SelectShift automatic transmission with progressive range select and tow/haul mode

Axle – Rear, electronic-locking

Axle – Rear, higher-ratio

Fuel tank – Extended-range 125-liter capacity (requires 101A; not available with Regular Cab 122" WB)

Trailer brake controller (included with Max. Trailer Tow Package)

18" Silver heavy-duty aluminum wheels (requires 101A and Heavy-Duty Payload Package)

LT245/70R17E BSW all-terrain tires (requires 101A and FX4 Off-Road Package)

##### Seating

Front – Cloth bucket seats with flow-through center console and steering column-mounted shifter (requires 101A; SuperCab and SuperCrew only)

Front – Vinyl 40/20/40 split seat with folding armrest

Front – Vinyl bucket seats with flow-through center console and steering column-mounted shifter (requires 101A; SuperCab and SuperCrew only)

##### Interior

All-weather floor mats (requires 101A and color-coordinated carpet with carpeted floor mats)

Flooring – Color-coordinated carpet with carpeted floor mats (requires 101A)

Power outlet – 110-volt/400-watt (1 on center stack with 40/20/40 split front seat; 1 additional on back of center console with front bucket seats with flow-through center console; requires 101A; SuperCab and SuperCrew only)

Window – Rear, power-sliding with defogger<sup>2</sup> (requires 101A; SuperCab and SuperCrew only)

#### Exterior

Bedliner – Plastic drop-in

Bedliner – Tough Bed<sup>®</sup> spray-in bedliner

Box side steps

BoxLink<sup>™</sup> with 4 premium locking cleats<sup>2</sup> (included with 101A)

Cab steps – Black platform running boards

Cab steps – Black step bars (requires 100A; Regular Cab only)

Fog lamps (requires 101A)

Mirrors – Manual-folding sideview with power, heated glass, integrated turn signal indicators, high-intensity LED security approach lamps, LED spotlights, driver's side auto-dimming feature, and black mirror caps (requires 101A)

Mirrors – Manual-folding/-telescoping trailer tow with manual glass and black mirror caps (requires 100A and Trailer Tow Package or Max. Trailer Tow Package; not available with 3.5L Ti-VCT engine or Regular Cab 122" WB)

Mirrors – Manual-folding/-telescoping trailer tow with power, heated glass, integrated turn signal indicators, high-intensity LED security approach lamps, LED spotlights, and black mirror caps (requires 101A and Trailer Tow Package or Max. Trailer Tow Package; not available with 3.5L Ti-VCT engine or Regular Cab 122" WB)

Rear view camera with Dynamic Hitch Assist (requires 101A)

Reverse Sensing System

Stowable loading ramps<sup>1,2</sup> (requires BoxLink)

Tailgate step includes step, grab bar and tailgate lift assist

Tonneau cover – Hard<sup>1</sup>

Tonneau cover – Soft-folding by Advantage<sup>1,3</sup>

#### Available Equipment Group

**Equipment Group 101A – Power Equipment Group** includes power door locks with autolock; power tailgate lock; Remote Keyless Entry System with 2 integrated keyhead transmitter remotes; power windows and sideview mirrors; Illuminated Entry System; automatic on/off headlamps with rainlamp feature; configurable daytime running lamps; MyKey<sup>®</sup>; and perimeter anti-theft alarm + AM/FM stereo/single-CD player with clock and auxiliary audio input jack (includes 4 speakers on Regular Cab and 6 speakers on SuperCab and SuperCrew) + cruise control + Ford SYNC<sup>®</sup> voice-activated, in-vehicle communications and entertainment system with 1 smart-charging USB port + BoxLink with 4 premium locking cleats<sup>2</sup>



XL SuperCab 4x2. Oxford White. Available equipment.

XL SuperCab 4x4. Dark Earth Gray cloth trim. Available equipment.

<sup>1</sup>Available Spring 2015. <sup>2</sup>Availability varies by market. Restrictions may apply. <sup>3</sup>Ford Licensed Accessory.





XLT SuperCrew 4x4, Guard Metallic. XLT Chrome Package. Available equipment.

XLT SuperCrew 4x4, Medium Earth Gray cloth trim. Available equipment.

**Equipment Group 300A**  
Includes select XL features, plus:

**Mechanical**  
17" Silver-painted aluminum wheels

**Seating**  
Front – 40/20/40 split seat with manual lumbar, folding armrest and storage, and 4-way adjustable head restraints

**Interior**  
AM/FM stereo/single-CD player with clock (includes 4 speakers on Regular Cab and 6 speakers on SuperCab and SuperCrew®)

Ford SYNC® voice-activated, in-vehicle communications and entertainment system with 1 smart-charging USB port

Accessory delay for power features

Auxiliary audio input jack

Cruise control

Door-sill scuff plates – Color-coordinated

Driver and right-front-passenger seat back map pockets

Flooring – Color-coordinated carpet

Flooring – Color-coordinated carpeted floor mats

Locks – Power door with autolock and power tailgate MyKey®

Overhead console with storage bins and map lights (SuperCab and SuperCrew only)

Visors – Driver and front-passenger with covered vanity mirrors

Window – Rear, fixed glass with solar tint

Windows – Power with front one-touch-up/down feature

**Exterior**

BoxLink™ with 4 premium locking cleats<sup>1</sup>

Bumper – Front, chrome with body-color upper fascia

Bumper – Rear, chrome

Fog lamps

Grille – Chrome insert and surround with black mesh

Headlamps – Autolamp automatic on/off with rainlamp feature

Mirrors – Manual-folding sideview with power glass and black mirror caps

**Safety & Security**

Perimeter anti-theft alarm

Remote Keyless Entry System with 2 integrated keyhead transmitter remotes with panic button

SecuriCode™ keyless entry keypad

**Available Options**

**Mechanical**

3.5L EcoBoost® V6 engine and 6-speed SelectShift® automatic transmission with progressive range select and tow/haul mode<sup>2</sup> (not available with Regular Cab 122" WB)

5.0L Ti-VCT V8 engine and 6-speed SelectShift automatic transmission with progressive range select and tow/haul mode

Axle – Rear, electronic-locking

Axle – Rear, higher-ratio

Fuel tank – Extended-range 125-liter capacity (requires 301A or 302A; not available with Regular Cab 122" WB)

Trailer brake controller (included with Max. Trailer Tow Package)

20" chrome-like PVD wheels with 275/55R20 tires<sup>1</sup> (BSW all-season on 4x2; OWL all-terrain on 4x4) (requires 301A or 302A, and XLT Chrome Package; SuperCab and SuperCrew only)

20" 6-spoke premium painted aluminum wheels with 275/55R20 BSW tires<sup>1</sup> (all-season on 4x2; all-terrain on 4x4) (requires 301A or 302A, and XLT Sport Package; SuperCab and SuperCrew only)

20" machined aluminum wheels with Silver-painted pockets and 275/55R20 tires<sup>1</sup> (BSW all-season on 4x2; OWL all-terrain on 4x4) (requires 301A; SuperCab and SuperCrew only; not available with 3.5L Ti-VCT engine, XLT Chrome Package or XLT Sport Package)

LT245/70R17E BSW all-terrain tires (requires 301A and FX4 Off-Road Package)

LT275/65R18C OWL all-terrain tires (requires 301A or 302A, FX4 Off-Road Package, and XLT Chrome or XLT Sport Package; SuperCab or SuperCrew only)

**Seating**

Front – Cloth bucket seats with flow-through center console and steering column-mounted shifter (SuperCab and SuperCrew only)

**Interior**

SYNC with MyFord Touch® voice-activated, in-vehicle communications and entertainment system includes 8" touch screen in center stack; media hub with 2 USB ports, SD card reader and audio input jack (requires 301A; included with 302A) Navigation Radio System<sup>1</sup>

All-weather floor mats (not available with black vinyl flooring)

Flooring – Black vinyl (requires 300A or 301A)

Power outlet – 110-volt/400-watt (1 on center stack with 40/20/40 split front seat; 1 additional on back of center console with front bucket seats with flow-through center console; included with 302A; SuperCab and SuperCrew only)

**Exterior**

Bedliner – Plastic drop-in

Bedliner – Tough Bed® spray-in bedliner

BLIS® (Blind Spot Information System) with cross-traffic alert<sup>1</sup> (requires 302A; not available with trailer tow mirrors)

Box side steps (requires 301A or 302A)

Cab steps – Black platform running boards (requires 300A or 301A; not available with XLT Chrome Package or XLT Sport Package)

Cab steps – Chrome step bars (requires 301A; SuperCab and SuperCrew only; not available with XLT Sport Package)

Mirrors – Manual-folding sideview with power, heated glass, integrated turn signal indicators, driver's side auto-dimming feature, and black mirror caps (includes auto-dimming rearview mirror; included with 301A and 302A)

Mirrors – Manual-folding sideview with power, heated glass, integrated turn signal indicators, high-intensity LED security approach lamps, LED spotlights, driver's side auto-dimming feature, and black mirror caps (includes auto-dimming rearview mirror)

Mirrors – Manual-folding/-telescoping trailer tow with power, heated glass, integrated turn signal indicators, high-intensity LED security approach lamps, LED spotlights, and black mirror caps (requires Trailer Tow Package or Max. Trailer Tow Package; not available with 3.5L Ti-VCT engine)

Moonroof – Single panel (requires 302A; SuperCab only)

Moonroof – Twin panel (requires 302A; SuperCrew only)

Pickup box – LED box lighting (requires 301A; included with 302A)

Rear view camera with Dynamic Hitch Assist (included with 301A and 302A)

Remote Start System (requires 301A; included with 302A)

Reverse Sensing System (requires 301A; included with 302A)

Stowable bed extender (requires 301A or 302A)

Stowable loading ramps<sup>1,2</sup>

Tailgate step includes step, grab bar and tailgate lift assist (requires 301A or 302A)

Tonneau cover – Hard<sup>2</sup>

Tonneau cover – Soft-folding by Advantage<sup>2,3</sup>

Two-tone paint (requires 301A or 302A; not available with XLT Sport Package)

Wheel-well liners, rear<sup>2</sup> (requires 301A or 302A, and XLT Chrome Package or XLT Sport Package)

Window – Rear, power-sliding with defogger (requires 301A; included with 302A; SuperCab and SuperCrew only)

**Safety & Security**

Inflatable safety belts in rear outboard seating positions (requires 301A or 302A; SuperCrew only)

**Available Equipment Groups**

**Equipment Group 301A** – 8-way power driver's seat with power lumbar + manual-folding sideview mirrors with power, heated glass, integrated turn signal indicators, driver's side auto-dimming feature, and black mirror caps + auto-dimming rearview mirror + leather-wrapped steering wheel + rear view camera with Dynamic Hitch Assist + power-adjustable pedals + rear underseat storage (SuperCab and SuperCrew only)

**Equipment Group 302A** – (SuperCab and SuperCrew only) includes all content of 301A

+ **XLT Chrome Package** includes chrome billet-style grille and surround with black mesh insert, chrome front tow hooks (4x4), 18" chrome-like PVD wheels, 265/60R18 BSW all-season tires (4x2), 275/65R18 OWL all-terrain tires (4x4), chrome door handles with body-color bezels, 5" chrome cab steps, and chrome exhaust tip + SYNC with MyFord Touch voice-activated, in-vehicle communications and entertainment system includes 8" touch screen in center stack, and media hub with 2 USB ports, SD card reader and audio input jack + Remote Start System + Reverse Sensing System + 10-way power driver and front-passenger seats + 110-volt/400-watt power outlet on center stack + power-sliding rear window with defogger + LED box lighting

<sup>1</sup>Availability varies by market. Restrictions may apply. <sup>2</sup>Available Spring 2015. <sup>3</sup>Ford Licensed Accessory.

# LARIAT

## Equipment Group 502A

Includes select XLT features, plus:

### Mechanical

5.0L Ti-VCT V8 engine and 6-speed SelectShift® automatic transmission with progressive range select and tow/haul mode

2-speed automatic 4WD with neutral towing capability (4x4 only)

18" chrome-like PVD wheels

265/60R18 BSW all-season tires (4x2 only)

275/65R18 OWL all-terrain tires (4x4 only)

### Seating

Front – Leather-trimmed, heated and cooled 10-way power-adjustable driver and right-front-passenger bucket seats with power lumbar

Rear – 60/40 split flip-up rear seat with leather seating surfaces, underseat storage, and folding armrest with cupholders (SuperCrew)

Rear – 60/40 split flip-up rear seat with underseat storage (SuperCab)

Memory driver's seat

### Interior

SYNC® with MyFord Touch® voice-activated, in-vehicle communications and entertainment system includes 8" touch screen in center stack, media hub with 2 USB ports, SD card reader and audio input jack; and one 8" productivity screen in gauge cluster

Audio System from Sony® with single-CD player

Navigation Radio System<sup>1</sup>

Ambient lighting

Center console – Flow-through with floor shifter

Dual-zone electronic automatic temperature control

Intelligent Access with push-button start

Mirror – Auto-dimming rearview

Overhead console with storage bins, map lights, and rear window controls

Power-adjustable accelerator and brake pedals with memory

Power outlets – 110-volt/400-watt (1 on center stack and 1 on back of center console)

Steering column – Power-tilt/-telescoping with memory

Steering wheel – Black leather-wrapped with 5-way SYNC and audio controls

Visors – Driver and passenger-side with covered, illuminated vanity mirrors

Window – Rear, power-sliding with defogger

Woodgrain interior trim accents

### Exterior

Advanced Security Pack includes SecuriLock® Passive Anti-Theft System and Inclinatio-/Intrusion Sensors

BLIS® (Blind Spot Information System) with cross-traffic alert<sup>1</sup>

Cab steps – Chrome angular

Door and tailgate handles – Chrome with body-color bezels

Exhaust tip – Chrome

Grille – Chrome 3-bar insert, surround and mesh

Headlamps – High-intensity quad-beam LED with auto high beams

Mirrors – Power-folding sideview with power, heated glass, memory, integrated turn signal indicators, high-intensity LED security approach lamps, driver's side auto-dimming feature, and body-color mirror caps

Pickup box – LED box lighting

Pickup box – LED center high-mounted stop lamp with integrated cargo lamp

Rear view camera with Dynamic Hitch Assist

Remote Start System with remote tailgate release

Reverse Sensing System

Taillamps – LED

Tow hooks – 2 in front, chrome (4x4 only)

Wheel-lip moldings – Body-color

Windshield wipers – Rain-sensing

### Available Options

#### Mechanical

3.5L EcoBoost® V6 engine and 6-speed SelectShift automatic transmission with progressive range select and tow/haul mode<sup>2</sup>

Axle – Rear, electronic-locking

Axle – Rear, higher-ratio

Fuel tank – Extended-range 125-liter capacity

Trailer brake controller (included with Max. Trailer Tow Package)

20" chrome-like PVD wheels with 275/55R20 tires<sup>1</sup> (BSW all-season on 4x2; OWL all-terrain on 4x4) (not available with LARIAT Sport Package)

20" 6-spoke premium painted aluminum wheels with 275/55R20 BSW tires<sup>1</sup> (all-season on 4x2; all-terrain on 4x4) (requires LARIAT Sport Package)

LT275/65R18C OWL all-terrain tires (requires FX4 Off-Road Package)

### Interior

All-weather floor mats

### Exterior

Active park assist<sup>1</sup> (requires Technology Package, and adaptive cruise control and collision warning with brake support)

Adaptive cruise control and collision warning with brake support

Bedliner – Plastic drop-in<sup>2</sup>

Bedliner – Tough Bed® spray-in bedliner

Box side steps

Cab steps – Power-deployable running boards (SuperCrew only)

Mirrors – PowerScope® power-telescoping/-folding trailer tow with power, heated glass, integrated turn signal indicators, high-intensity LED security approach lamps, LED spotlights, and black mirror caps (requires Trailer Tow Package or Max. Trailer Tow Package)

Moonroof – Single panel (SuperCab only)

Moonroof – Twin panel (SuperCrew only)

Stowable bed extender

Stowable loading ramps<sup>1,2</sup>

Tailgate step includes step, grab bar and tailgate lift assist

Tonneau cover – Hard<sup>2</sup>

Tonneau cover – Soft-folding by Advantage<sup>2,3</sup>

Two-tone paint includes accent-color bumpers and wheel-lip moldings (not available with LARIAT Sport Package)

Wheel-well liners, rear<sup>2</sup>

### Safety & Security

Inflatable safety belts in rear outboard seating positions (SuperCrew only)



LARIAT SuperCrew 4x4. Ingot Silver Metallic. Available equipment.

LARIAT SuperCrew 4x4. Medium Light Camel leather trim. Available equipment.

<sup>1</sup>Availability varies by market. Restrictions may apply. <sup>2</sup>Available Spring 2015. <sup>3</sup>Ford Licensed Accessory. Sony is a registered trademark of the Sony Corporation.



**Equipment Group 600A**

*Includes select LARIAT features, plus:*

**Mechanical**

5.0L Ti-VCT V8 engine and 6-speed SelectShift® automatic transmission with progressive range select and tow/haul mode

Trailer brake controller

18" machined aluminum wheels with Silver-painted pockets and KING RANCH logo center caps

**Seating**

Mesa leather-trimmed seats with running "W" logo on seat backs

**Interior**

Center console – Flow-through with Mesa leather-trimmed lid and floor shifter knob

Door-sill scuff plates – Metallic insert with KING RANCH lettering and running "W" logo

Flooring – Front and rear carpeted floor mats with KING RANCH logo

Genuine Khaya wood interior trim accents

Steering wheel – Mesa leather-wrapped

**Exterior**

Bumper – Front, Caribou with chrome insert and body-color upper fascia

Bumper – Rear, Caribou

Cab steps – Caribou 6" angular

Grille – Chrome 3-bar insert and surround with accent-color mesh

KING RANCH door and fender badges

Mirrors – Power-folding sideview with power, heated glass, memory, integrated turn signal indicators, LED spotlights, driver's side auto-dimming feature, and body-color mirror caps

Two-tone paint with Caribou lower accent color

Wheel-lip moldings – Caribou

**Available Options**

**Mechanical**

3.5L EcoBoost® V6 engine and 6-speed SelectShift automatic transmission with progressive range select and tow/haul mode<sup>1</sup>

Axle – Rear, electronic-locking

Axle – Rear, higher-ratio

Fuel tank – Extended-range 125-liter capacity

20" machined aluminum wheels with Light Caribou-painted pockets and 275/55R20 tires<sup>2</sup> (BSW all-season on 4x2; OWL all-terrain on 4x4) (included with 601A)

LT275/65R18C OWL all-terrain tires (requires 600A and FX4 Off-Road Package)

**Interior**

All-weather floor mats

**Exterior**

Active park assist<sup>2</sup> (requires 601A, Technology Package, and adaptive cruise control and collision warning with brake support)

Adaptive cruise control and collision warning with brake support (requires 601A)

Bedliner – Plastic drop-in

Bedliner – Tough Bed® spray-in bedliner

Box side steps

Mirrors – PowerScope® power-telescoping/-folding trailer tow with power, heated glass, integrated turn signal indicators, high-intensity LED security approach lamps, LED spotlights, and chrome mirror caps (requires Trailer Tow Package or Max. Trailer Tow Package)

Moonroof – Twin panel

Stowable bed extender

Stowable loading ramps<sup>1,2</sup>

Tailgate step includes step, grab bar and tailgate lift assist (included with 601A)

Tonneau cover – Hard<sup>1</sup>

Tonneau cover – Soft-folding by Advantage<sup>1,3</sup>

Wheel-well liners, rear<sup>1</sup>

**Available Equipment Group**

**Equipment Group 601A** – Tailgate step includes step, grab bar and tailgate lift assist + multicontour front bucket seats + inflatable safety belts in rear outboard seating positions + power-deployable running boards + rain-sensing windshield wipers + 20" machined aluminum wheels with Light Caribou-painted pockets<sup>2</sup> + 275/55R20 BSW all-season tires (4x2) or 275/55R20 OWL all-terrain tires (4x4)

KING RANCH SuperCrew® 4x4. Green Gem Metallic. KING RANCH Monochromatic Paint Package. Available equipment.

KING RANCH SuperCrew 4x4. Mesa leather trim. Available equipment.

<sup>1</sup>Available Spring 2015. <sup>2</sup>Availability varies by market. Restrictions may apply. <sup>3</sup>Ford Licensed Accessory.

# PLATINUM



PLATINUM SuperCrew® 4x4. White Platinum Metallic Tri-coat. Available equipment.

PLATINUM SuperCrew 4x4. Brunello luxury leather trim. Available equipment.

**Equipment Group 700A**  
Includes select LARIAT features, plus:

### Mechanical

5.0L Ti-VCT V8 engine and 6-speed SelectShift® automatic transmission with progressive range select and tow/haul mode

Trailer brake controller

20" polished aluminum wheels

275/55R20 BSW all-season tires<sup>1</sup> (4x2 only)

275/55R20 BSW all-terrain tires (4x4 only)

### Seating

Front – Multicontour bucket seats with PLATINUM logo on seat backs

Inflatable safety belts in rear outboard seating positions

### Interior

Aluminum appliqués on center panel and console

Ambient lighting

Center console – Flow-through with leather-trimmed lid and floor shifter with leather-wrapped knob

Door-sill scuff plates – Metallic insert with PLATINUM lettering

Flooring – Premium front and rear carpeted floor mats

Genuine Figured Eucalyptus wood interior trim accents

### Exterior

Bright bodyside accent moldings

Bumper – Front, body-color with chrome insert and body-color upper fascia

Bumper – Rear, body-color

Cab steps – Power-deployable running boards

Grille – Satin-finish 3-bar insert with chrome accents, satin-finish surround and bright mesh

PLATINUM fender badges

Tailgate – Satin-finish appliqué

Windshield wipers – Rain-sensing

### Available Options

#### Mechanical

3.5L EcoBoost® V6 engine and 6-speed SelectShift automatic transmission with progressive range select and tow/haul mode<sup>2</sup>

Axle – Rear, electronic-locking

Axle – Rear, higher-ratio

Fuel tank – Extended-range 125-liter capacity

#### Interior

All-weather floor mats

#### Exterior

Active park assist<sup>1</sup> (requires 701A)

Bedliner – Plastic drop-in

Bedliner – Tough Bed® spray-in bedliner

Box side steps

Mirrors – PowerScope® power-telescoping/-folding trailer tow with power, heated glass, integrated turn signal indicators, high-intensity LED security approach lamps, LED spotlights, and chrome mirror caps (requires Trailer Tow Package or Max. Trailer Tow Package)

Moonroof – Twin panel

Stowable bed extender

Stowable loading ramps<sup>1,2</sup>

Tailgate step includes step, grab bar and tailgate lift assist (included with 701A)

Tonneau cover – Hard<sup>2</sup>

Tonneau cover – Soft-folding by Advantage<sup>2,3</sup>

Wheel-well liners, rear<sup>2</sup>

### Available Equipment Group

**Equipment Group 701A – Technology Package<sup>1</sup>**

includes 360 Camera with Split-view Display and Lane-Keeping System + adaptive cruise control and collision warning with brake support + tailgate step includes step, grab bar and tailgate lift assist

<sup>1</sup>Availability varies by market. Restrictions may apply. <sup>2</sup>Available Spring 2015. <sup>3</sup>Ford Licensed Accessory.

## PACKAGES

### XL Appearance

**XL Chrome Package** (requires 101A; not available with XL Sport Package or Heavy-Duty Payload Package) includes chrome front bumper with body-color upper fascia, chrome rear bumper, fog lamps, and 17" Silver-painted aluminum wheels

**XL Sport Package** (requires 101A; not available with XL Chrome Package or Heavy-Duty Payload Package) includes body-color front bumper and upper fascia, body-color rear bumper, fog lamps, 17" Silver-painted aluminum wheels, and SPORT box decals (decals not included when ordered with the FX4 Off-Road Package)

### XLT Appearance

**XLT Chrome Package** (requires 301A; included with 302A; SuperCab and SuperCrew® only; not available with Heavy-Duty Payload Package or XLT Sport Package) includes chrome billet-style grille and surround with black mesh insert, chrome front tow hooks (4x4), 18" chrome-like PVD wheels, 265/60R18 BSW all-season tires (4x2), 275/65R18 OWL all-terrain tires (4x4), chrome door handles with body-color bezels, 5" chrome cab steps, and chrome exhaust tip

**XLT Sport Package** (requires 301A or 302A; SuperCab and SuperCrew only; not available with 3.5L Ti-VCT engine, SuperCab 164" WB, Heavy-Duty Payload Package, or XLT Chrome Package) includes Black billet-style grille with body-color surround and black mesh insert; body-color bumpers, front upper fascia, door handles and wheel-lip moldings; 18" 6-spoke machined aluminum wheels with Magnetic-painted pockets; 265/60R18 BSW all-season tires (4x2); 275/65R18 OWL all-terrain tires (4x4); Magnetic tubular cab steps; chrome exhaust tip; SPORT box decals (decals not included when ordered with the FX4 Off-Road Package); Sport cloth front bucket seats with flow-through center console; and unique interior finish

### LARIAT Appearance

**LARIAT Sport Package** (not available with SuperCab 164" WB) includes Magnetic 3-bar grille and surround with black mesh insert; Magnetic 6" angular cab steps; body-color front bumper with Magnetic insert and body-color upper fascia; body-color rear bumper; 18" 6-spoke machined aluminum wheels with Magnetic-painted pockets; chrome exhaust tip; SPORT box decals (decals not included when ordered with the FX4 Off-Road Package); and unique interior finish

### KING RANCH® Appearance

**KING RANCH Chrome Package**<sup>1</sup> (requires 601A) includes chrome 3-bar grille, surround and mesh insert; chrome bumpers; chrome front tow hooks (4x4); 20" chrome-like PVD wheels; 275/55R20 BSW all-season tires (4x2); 275/55R20 OWL all-terrain tires (4x4); chrome door handles with body-color bezels; chrome mirror caps; bright beltline moldings; and tailgate appliqué

**KING RANCH Monochromatic Paint Package** (requires 601A and KING RANCH Chrome Package) includes monochromatic paint and body-color wheel-lip moldings

### Technology

**Technology Package**<sup>1</sup> (available on LARIAT, KING RANCH 601A and PLATINUM) includes 360 Camera with Split-view Display, and Lane-Keeping System

### FX4 Off-Road

**FX4 Off-Road Package** (optional on XL 101A, XLT, LARIAT, KING RANCH and PLATINUM; 4x4 only; not available with 3.5L Ti-VCT engine) includes electronic-locking rear axle; off-road-tuned front shock absorbers; FX4 Off-Road box decals; and Hill Descent Control™

### Towing

**Trailer Tow Package** (optional on all trims; required for towing up to 4,808 kg) includes 4-pin/7-pin wiring harness, Class IV trailer hitch receiver, Smart Trailer Tow Connector, auxiliary transmission oil cooler, engine oil cooler (with 3.5L Ti-VCT engine only), and upgraded radiator and front stabilizer bar

**Max. Trailer Tow Package** (optional on all trims; required for towing up to 5,307 kg; requires 3.5L EcoBoost® engine) includes 4-pin/7-pin wiring harness; Class IV trailer hitch receiver; Smart Trailer Tow Connector; auxiliary transmission oil cooler; 3.55 electronic-locking rear axle; trailer brake controller; and upgraded radiator, front stabilizer bar and rear bumper

### Payload

**Heavy-Duty Payload Package**<sup>1</sup> (available on XL and XLT 300A/301A; increases GVWR to 3,447 kg for improved payload and towing; restrictions apply) includes 17" Silver heavy-duty steel wheels with LT245/70R17E BSW all-terrain tires on XL, 18" Silver heavy-duty aluminum wheels with LT275/65R18C OWL all-terrain tires on XLT, heavy-duty shock absorbers, upgraded springs and radiator, auxiliary transmission oil cooler, 9.75" gear set, and 3.73 electronic-locking rear axle

<sup>1</sup>Availability varies by market. Restrictions may apply.

## WHEELS



17" Silver Steel  
XL – Standard



17" Silver Heavy-Duty Steel  
XL – Included: Heavy-Duty Payload Package



17" Silver-Painted Aluminum  
XL – Included: Chrome Package and Sport Package  
XLT – Standard



18" Silver Heavy-Duty Aluminum  
XL – Optional: requires 101A and Heavy-Duty Payload Package  
XLT – Included: Heavy-Duty Payload Package



18" 6-Spoke Machined Aluminum with Magnetic-Painted Pockets  
XLT – Included: Sport Package  
LARIAT – Included: Sport Package



18" Chrome-Like PVD  
XLT – Included: Chrome Package  
LARIAT – Standard



20" 6-Spoke Premium Painted Aluminum  
XLT – Optional: requires Sport Package  
LARIAT – Optional: requires Sport Package



20" Machined Aluminum with Silver-Painted Pockets  
XLT – Optional: requires 301A



20" Chrome-Like PVD  
XLT – Optional: requires Chrome Package  
LARIAT – Optional



18" Machined Aluminum with Silver-Painted Pockets  
KING RANCH – Standard



20" Machined Aluminum with Light Caribou-Painted Pockets  
KING RANCH – Optional



20" Chrome-Like PVD  
KING RANCH – Included: Chrome Package



20" Polished Aluminum  
PLATINUM – Standard



**EXTERIORS** This helpful guide is intended for selecting an exterior color – not features, options or a trim level.



Oxford White



White Platinum Metallic Tri-coat



Bronze Fire Metallic



Caribou Metallic



Race Red



Ruby Red Metallic Tinted Clearcoat



Blue Flame Metallic



Blue Jeans Metallic



Green Gem Metallic



Ingot Silver Metallic



Guard Metallic

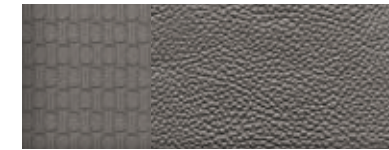


Magnetic Metallic

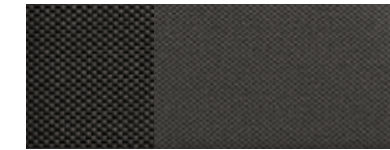


Tuxedo Black Metallic

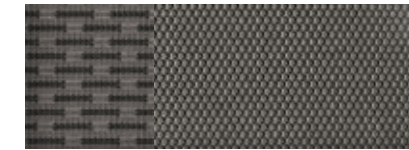
**INTERIORS**



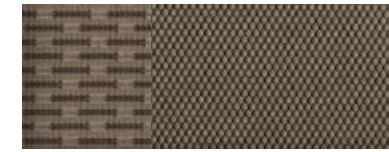
1 Medium Earth Gray Vinyl



2 Dark Earth Gray Cloth



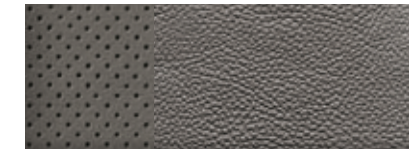
3 Medium Earth Gray Cloth



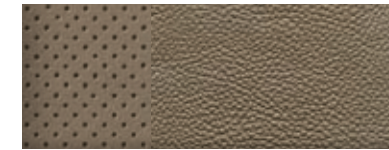
4 Medium Light Camel Cloth



5 XLT Sport Black Cloth



6 Medium Earth Gray Leather



7 Medium Light Camel Leather



8 Black Leather



9 Mesa Leather



10 Black Luxury Leather



11 Brunello Luxury Leather

Exteriors	Two-Tone		Interiors						
	XL	XL SPORT	XLT	XLT SPORT	LARIAT	LARIAT SPORT	KING RANCH®	PLATINUM	
Oxford White	■ ■	1 2	1 2	3 4	5	6 7 8	8	9	
White Platinum Metallic Tri-coat <sup>1</sup>	■					6 7 8		9	10 11
Bronze Fire Metallic	■			3 4		6 7 8		9	
Caribou Metallic		1 2		3 4		6 7 8		9	
Race Red	■	1 2	1 2	3 4	5		8		
Ruby Red Metallic Tinted Clearcoat <sup>1</sup>	■ ■			3 4	5	6 7 8	8	9	10 11
Blue Flame Metallic	■	1 2	1 2	3 4	5		8		
Blue Jeans Metallic	■ ■	1 2		3 4		6 7 8		9	10 11
Green Gem Metallic	■ ■	1 2		3 4		6 7 8		9	
Ingot Silver Metallic	■	1 2	1 2	3 4	5	6 7 8	8		10 11
Guard Metallic	■			3 4		6 7 8		9	10 11
Magnetic Metallic		1 2	1 2	3 4	5	6 7 8	8		10 11
Tuxedo Black Metallic	■ ■	1 2	1 2	3 4	5	6 7 8	8	9	10 11

■ Magnetic Two-Tone Accent exterior optional on XLT ■ Caribou Two-Tone Accent exterior standard on KING RANCH, optional on LARIAT

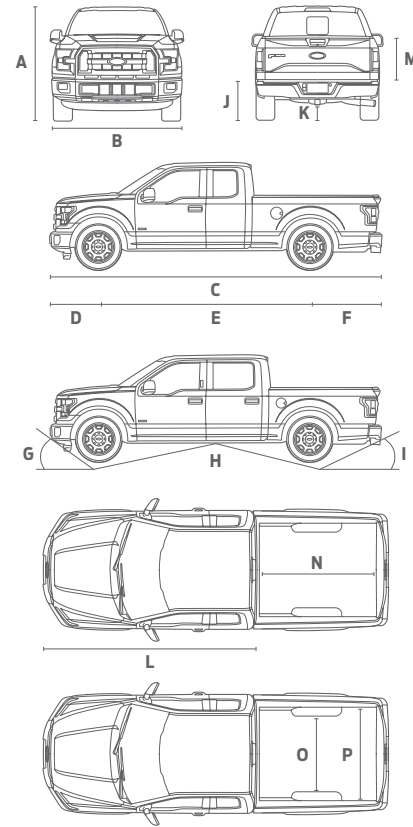
2 Optional 6 Not available with two-tone exterior

<sup>1</sup>Additional charge. Colors are representative only. See your dealer for actual paint/trim options.

# TECHNICAL SPECIFICATIONS

## DIMENSIONS mm

	Regular Cab 4x2/4x4	SuperCab 4x2/4x4	SuperCrew® 4x2/4x4
<b>Exterior</b>			
A. Height – 5½' box	—	—	1,919/1,962
A. Height – 6½' box	1,918/1,954	1,917/1,960	1,922/1,964
A. Height – 8' box	1,907/1,952	1,917/1,955	—
B. Width – Excl. mirrors	2,030	2,030	2,030
B. Width – Incl. standard mirrors	2,459	2,459	2,459
B. Width – Incl. trailer tow mirrors	2,689	2,689	2,689
B. Width – Std. mirrors folded	2,120	2,120	2,120
C. Length – 5½' box	—	—	5,889
C. Length – 6½' box	5,315	5,889	6,189
C. Length – 8' box	5,789	6,363	—
D. Overhang – Front	959	959	959
E. Wheelbase – 5½' box	—	—	3,683
E. Wheelbase – 6½' box	3,109	3,683	3,983
E. Wheelbase – 8' box	3,583	4,157	—
F. Overhang – Rear	1,247	1,247	1,247
G. Angle of approach – 5½' box	—	—	24.1°/25.5°
G. Angle of approach – 6½' box	24.8°/24.8°	24.4°/25.8°	23.8°/25.5°
G. Angle of approach – 8' box	24.1°/25.7°	24.5°/26.1°	—
H. Ramp breakover angle – 5½' box	—	—	18.3°/21.0°
H. Ramp breakover angle – 6½' box	22.1°/24.7°	18.5°/19.7°	17.2°/19.7°
H. Ramp breakover angle – 8' box	19.3°/22.1°	16.8°/19.0°	—
I. Angle of departure – 5½' box	—	—	23.8°/26.0°
I. Angle of departure – 6½' box	24.6°/27.1°	24.0°/26.1°	24.5°/26.4°
I. Angle of departure – 8' box	24.7°/26.8°	24.4°/26.0°	—
J. Load floor height – 5½' box	—	—	863/907
J. Load floor height – 6½' box	882/937	866/912	878/917
J. Load floor height – 8' box	883/928	876/907	—
K. Ground clearance (min.) – 5½' box	—	—	216/238
K. Ground clearance (min.) – 6½' box	224/239	220/238	213/237
K. Ground clearance (min.) – 8' box	219/239	221/237	—
L. Cab length	3,087	3,661	3,961
<b>Interior</b>	<b>1st Row/2nd Row</b>	<b>1st Row/2nd Row</b>	<b>1st Row/2nd Row</b>
Head room	1,037/—	1,037/1,023	1,037/1,026
Shoulder room	1,694/—	1,694/1,671	1,694/1,674
Hip room	1,588/—	1,588/1,644	1,588/1,644
Leg room (max.)	1,115/—	1,115/851	1,115/1,108
<b>Cargo Box</b>	<b>5½' Box</b>	<b>6½' Box</b>	<b>8' Box</b>
Volume cu. ft. (liters)	1,495	1,764	2,192
M. Inside height	543	543	543
N. Length at floor	1,705	2,005	2,479
O. Width at wheelhouse	1,285	1,285	1,285
P. Maximum width at floor	1,656	1,656	1,656



## MAXIMUM PAYLOAD WEIGHT RATINGS kg

Engine	Drive	Max. GVWR	Regular Cab		SuperCab		SuperCrew	
			122.4" WB	141.1" WB	145.0" WB	163.7" WB	145.0" WB	156.8" WB
3.5L V6 FFV	4x2	2,726/2,767 2,790	866/— —	—/862 —	—/762 —	—/— —	—/— 739	—/— —
	4x4	2,744/2,767 2,858/2,880	767/— —	—/758 —	—/— 753/—	—/— —	—/— —/726	—/— —/—
3.5L EcoBoost®	4x2	3,084/3,130/3,175 3,198/3,447 3,561	—/—/— —/— —	—/—/— 1,170/1,379 <sup>1</sup> 1,483 <sup>2</sup>	—/—/— —/— —	—/—/— 1,039/1,256 <sup>1</sup> 1,361 <sup>2</sup>	939/—/— —/— —	—/—/1,012 —/1,207 <sup>1</sup> 1,315 <sup>2</sup>
	4x4	3,175/3,198 3,447/3,561	—/— —	—/1,057 1,279/1,383 <sup>2</sup>	—/984 —	—/921 1,143/1,252 <sup>2</sup>	916/— —	—/912 1,098/1,202 <sup>2</sup>
5.0L V8 FFV	4x2	2,812/3,062/3,084 3,130/3,153/3,175 3,447/3,561	875/—/— —/—/— —	—/1,070/— —/—/— 1,393/1,497 <sup>2</sup>	—/—/— —/—/— —	—/—/— 1,057/—/— 1,266/1,370 <sup>2</sup>	—/—/966 —/—/— —	—/—/— —/1,012/— 1,216/1,320 <sup>2</sup>
	4x4	2,903/3,153/3,175 3,198/3,447/3,561	844/—/— —/—/—	—/1,043/— —/1,284/1,388 <sup>2</sup>	—/—/— 1,012/—/—	—/—/934 —/1,152/1,256 <sup>2</sup>	—/—/943 —/—/—	—/—/— 939/1,102/1,207 <sup>2</sup>

<sup>1</sup>Requires Heavy-Duty Payload Package and 17" wheels. <sup>2</sup>Requires Heavy-Duty Payload Package and 18" wheels. <sup>3</sup>Requires Max. Trailer Tow Package.

## CONVENTIONAL TOWING — MAXIMUM LOADED TRAILER WEIGHT RATINGS kg

Engine	Axle Ratio	GCWR	Regular Cab		SuperCab		SuperCrew	
			122.4" WB 4x2/4x4	141.1" WB 4x2/4x4	145.0" WB 4x2/4x4	163.7" WB 4x2/4x4	145.0" WB 4x2/4x4	156.8" WB 4x2/4x4
3.5L V6 FFV	3.55	4,264 4,309 4,445 4,491	2,268/— —/— —/— —/—	—/— 2,268/— —/— —/—	—/— 2,268/— —/— —/—	—/— —/— —/— —/—	—/— —/— —/— —/—	—/— —/— —/— —/—
	3.73	5,443 5,489 5,534	3,447/— —/— —/3,402	—/— 3,447/— —/3,357	—/— —/— 3,357/3,266	—/— —/— —/—	—/— —/— 3,311/3,221	—/— —/— —/—
3.5L EcoBoost	3.15	7,031 7,167 7,212	—/— —/— —/—	4,854/— —/— —/—	—/— 4,899/— —/—	—/— —/— 4,854/—	—/— 4,854/— —/—	—/— 4,854/— —/—
	3.31	7,167 7,258 7,303 7,348	—/— —/— —/— —/—	—/4,854 —/— —/— —/—	—/— —/4,854 —/— —/—	—/— —/— —/4,899 —/—	—/— —/— —/4,854 —/—	—/— —/4,854 —/— —/—
3.55	3.55	7,167 7,258 7,303 7,348 7,666 7,711 7,757	—/— —/— —/— —/— —/— —/— —/—	—/4,854 —/— —/— —/— —/— 5,534 <sup>3</sup> /— —/5,443 <sup>3</sup>	—/— —/4,854 —/— —/— —/— —/— 5,489 <sup>3</sup> /5,352 <sup>3</sup>	—/— —/— —/— —/4,899 —/— —/— 5,398 <sup>3</sup> /5,307 <sup>3</sup>	—/— —/— —/4,854 —/— —/— —/— 5,398 <sup>3</sup> /—	—/— —/— —/4,854 —/— —/— —/— 5,398 <sup>3</sup> /5,307 <sup>3</sup>
	3.73	7,711 7,757	—/— —/—	—/5,352 <sup>1</sup> 5,489 <sup>2</sup> /5,398 <sup>2</sup>	—/— —/—	—/— 5,398 <sup>2</sup> /5,262 <sup>2</sup>	—/— —/—	—/5,171 <sup>1</sup> 5,352 <sup>2</sup> /5,216 <sup>2</sup>
5.0L V8 FFV	3.31	5,897 5,988 6,305 6,396 6,441 6,486	3,810/— —/3,765 —/— —/— —/— —/—	—/— —/— 4,128/— —/4,128 —/— —/—	—/— —/— —/— —/— 4,173/— —/4,128	—/— —/— —/— —/— —/— 4,173/4,082	—/— —/— —/— —/— 4,128/— —/4,082	—/— —/— —/— —/— 4,128/— —/4,037
	3.55	5,988 6,260 6,396 6,532 6,577 6,759 6,895 6,940	—/3,765 —/— —/— —/— —/— —/— —/— —/—	—/— —/— —/4,128 —/— —/— 4,581/— —/— —/—	—/— —/— —/— —/4,173 —/— —/4,128 —/— —/—	—/— —/— —/— —/— —/— 4,627/— —/— —/—	—/— —/— —/— —/— —/— 4,581/— —/— —/—	—/— —/— —/— —/— —/— 4,581/— —/— —/—
3.73	6,623 7,258 7,303 7,348	—/4,400 —/— —/— —/—	—/— 5,035 <sup>2</sup> /— —/4,944 <sup>1</sup> —/5,035	—/— —/— —/— —/4,990	—/— —/— —/— 4,990 <sup>2</sup> /4,944	—/— —/— —/— —/—	—/— —/— —/— —/—	—/— —/— —/— 4,944 <sup>2</sup> /4,899

## MECHANICAL kg

### Front Suspension

Coil-over-shock  
Axle rating @ ground – 1,293 – 1,701

### Rear Suspension

Solid axle  
Axle rating @ ground – 1,497 – 2,177

### Steering

Electric power-assisted

### Brakes

4-wheel vented-disc ABS  
Front rotor diameter – 13.8"  
Rear rotor diameter – 13.7"

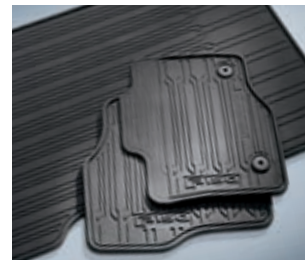
**Conventional Towing Notes:** Trailer tongue load weight should be 10–15% of total loaded trailer weight. Make sure that the vehicle payload (reduced by option weight) will accommodate trailer tongue load weight, and the weight of passengers and cargo added to the towing vehicle. The addition of trailer tongue load weight, and the weight of passengers and cargo, cannot cause vehicle weights to exceed the rear GAWR (Gross Axle Weight Rating) or GVWR (Gross Vehicle Weight Rating). These ratings can be found on the vehicle Safety Compliance Certification Label.

Maximum capabilities shown are for properly equipped vehicles with required equipment and a 68-kg driver. Weight of additional options, equipment, passengers and cargo must be deducted from this weight. For additional information, see your Ford Dealer.



QUALITY, GREEN, SAFE & SMART.

me.ford.com



XLT SuperCrew® 4x4 in Ingot Silver Metallic accessorized with a chrome exhaust tip, heavy-duty splash guards with stainless steel inserts, bed extender, spray-in bedliner,<sup>1</sup> and side window deflectors

Exhaust tips

Wheel-well liners

Drop-in bedliner<sup>1</sup>

All-weather floor mats

Tonneau covers<sup>2</sup>

#### Exterior

- Locking fuel plug
- Racks and carriers<sup>2</sup>
- Splash guards
- Trailer towing accessories
- Wheel lock kit

#### Interior

- Ash cup/coin holders
- Cargo organizers and protectors
- Interior light kit
- In-vehicle safe<sup>2</sup>
- Protective seat covers<sup>2</sup>
- Tablet cradle<sup>2</sup>

#### Bed Products

- Bed/cargo illumination
- Bed cargo net, divider, liners and mats

#### Electronics

- Auto-dimming rearview mirror
- Keyless entry keypad
- Warning sensor systems<sup>2</sup>
- Wireless charging<sup>2</sup>

<sup>1</sup>Factory option. See dealer for details.

<sup>2</sup>Ford Licensed Accessory. Availability varies by market. INVISION is a trademark of VOXX International Corporation.

**Ford Genuine Parts & Service.** Keep your vehicle in optimum operating condition with scheduled maintenance service. Ford and Lincoln Dealership technicians know your vehicle inside and out. They are continuously trained by Ford Motor Company and the parts they use are specifically designed for your vehicle. □ Ford Original Accessories will be warranted for whichever provides you the greatest benefit: 24 months/unlimited distance, or the remainder of your Bumper-to-Bumper 3-year/60,000-km New Vehicle Limited Warranty. Ford Licensed Accessories (FLA) are warranted by the accessory manufacturer's warranty. FLA are designed and developed by the accessory manufacturer and have not been designed or tested to Ford Motor Company engineering requirements. Contact your Ford Dealer for details and/or a copy of all limited warranties.

Comparisons based on competitive models (class is Full-Size Pickups under 3,856 kg GVWR), publicly available information and Ford certification data at time of printing. Vehicles may be shown with optional equipment. Features may be offered only in combination with other options or subject to additional ordering requirements/limitations. Dimensions shown may vary due to optional features and/or production variability. Information is provided on an "as is" basis and could include technical, typographical or other errors. Ford makes no warranties, representations, or guarantees of any kind, express or implied, including but not limited to, accuracy, currency, or completeness, the operation of the information, materials, content, availability, and products. Ford reserves the right to change product specifications, pricing and equipment at any time without incurring obligations. Your Ford Dealer is the best source of the most up-to-date information on Ford vehicles.



**BUILT FORD TOUGH®**



تصميم فورد المتين®