

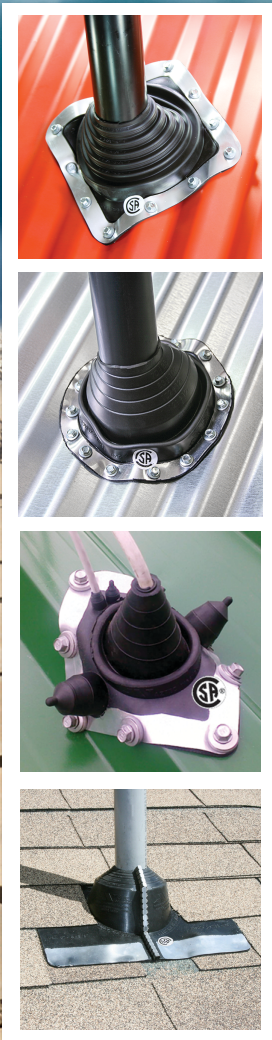
# Master Flash®

1/2016

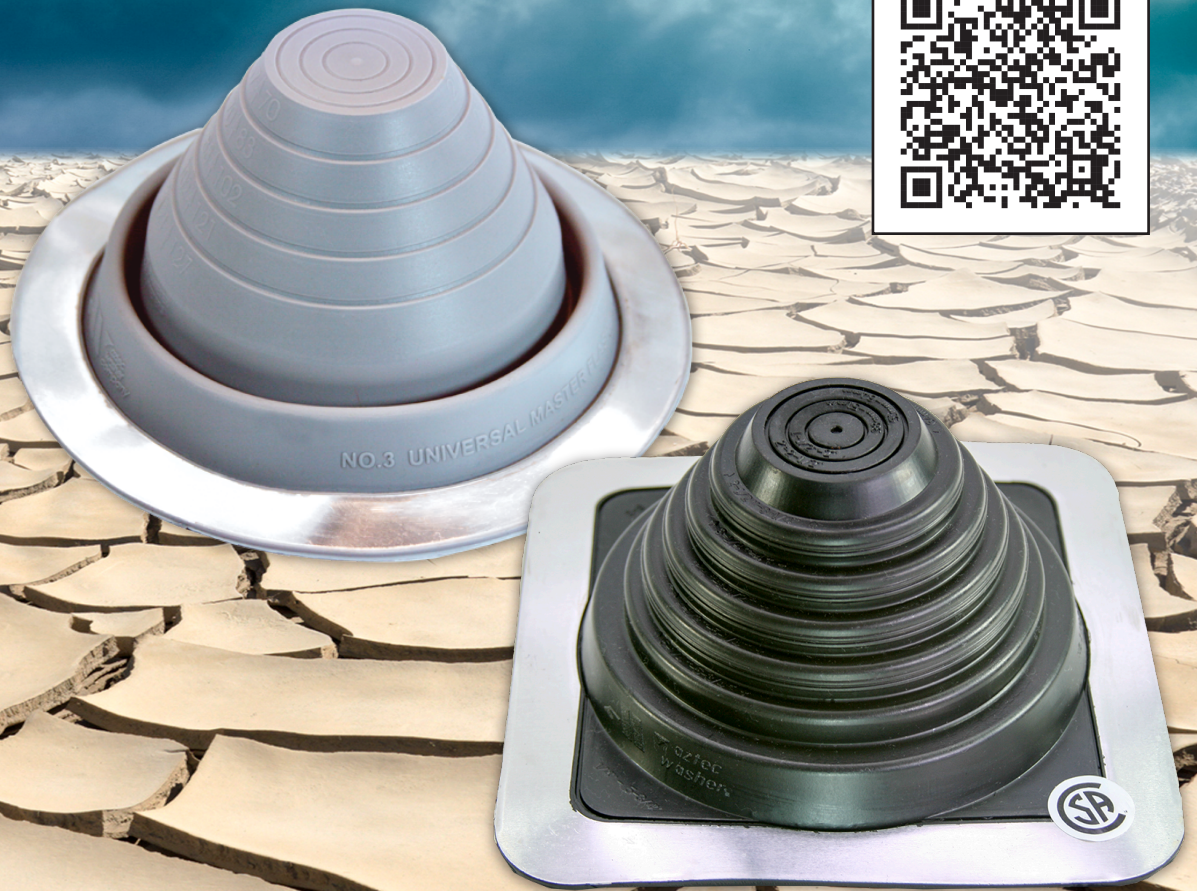
Quality and Service **Worldwide**

Since 1968

**Sealing pipes, cables, conduit, wire, solar, refrigeration lines, venting. etc.,**



Master Flash®  
Roof Pitch Calculator



Aztec Washer Company 13821 Danielson Street, Poway, CA 92064  
1.800.WASHER 5 (927-4375) • Ph: (858) 513-4350 • Fax: (858) 513-4305 • info@aztecwasher.com • www.aztecwasher.com



# Questions & Answers

## **Q: HOW LONG WILL THIS FLASHING LAST?**

**A:** All of the **Master Flash®** parts come with a minimum of a 20 year warranty. Our ICC listed **Master Flash®** is the only flashing with a 35 year warranty. So although longevity might be a concern with many flashings in the field today, it isn't with **Master Flash®**.

## **Q: WHERE ARE PIPE FLASHINGS USED?**

**A:** Pipe Flashings are used anywhere where pipes, conduits, wires are coming through a metal roof, side panel or side walls.

## **Q: ARE PIPE FLASHINGS ONLY USED IN METAL ROOFS?**

**A:** Although **Master Flash®** was originally engineered for the metal roofing industry, they are also used in electrical, plumbing, and heating/ AC, and residential industries. Over the last few decades, we have extended our line to include other roofing materials such as shake, shingle, concrete and tile. So no, its not just for metal anymore.

## **Q: SHOULD I USE A SQUARE BASE OR A ROUND BASE?**

**A:** This is up to you or the installer. Some people prefer round bases to match the round pipes and some prefer square bases because they like straight edges. There may be instances in which the hole size that was made for the penetration was cut too large and the flashing base size may become more critical. Refer to the appropriate sizing chart for base dimensions when base size is an issue.

## **Q: DO I NEED GRAY OR BLACK EPDM?**

**A:** It is up to you. Some people think that gray looks better than black on a metal roof, yet others like black. Product performance is relatively the same for both gray and black, but black is more often used.

## **Q: SHOULD I USE EPDM OR SILICONE?**

**A:** EPDM is the material of choice except for high temperature conditions. Please check out the Materials Specifications Chart which offers the temperature ranges of EPDM and Silicone to be sure you get what is right for you.

## **Q: WHAT IF I CAN'T SLIDE THE FLASHING OVER THE PENETRATION?**

**A:** If you have a roof penetration that does not allow you to slide the flashing down over the top of the pipe due to an obstruction (Gas line, water line, exhaust line, building to building, ect.), then you might be able to use a Retrofit **Master Flash®**. Take a look at that section to explore your options and sealing solutions.

## **Q: WHAT MATERIAL DO I NEED TO USE IF I HAVE A STOVE OR CHIMNEY PIPE?**

**A:** In any application where temperature is a concern, you must refer to the temperature range testing from the stove or chimney manufacture to determine which boot is needed. Check out the Materials Specifications Chart which offers the temperature ranges of EPDM and Silicone. **Master Flash®** is rated by IAPMO and UPC to be used with type B vents (double wall) heated vent pipes.

To summarize, any application with temperatures that consistently stay below 212° F and/or over -65° F should be able to use a standard EPDM flashing. Instances in which the temperatures consistently go above 212° F up to 437° F and below -100° F will need to use a Silicone flashing. Any applications that will reach over 437° F and/or under -100° F should not be used with any of the **Master Flash®** pipe flashings.

## **Q: WHAT IF MY ROOF HAS AN EXTREMELY STEEP PITCH?**

**A:** Depending on your specific situation, you might still be able to use a standard flashing, but we do have a free app that can help you decide "the roof pitch calculator" at <http://www.aztecwasher.com/app/index.html>. In any case where you have a steep pitch, most installers go with the flashing with the largest sized base that will fit that penetration. This does give you excess material around the base which will help to accommodate the pitch. If you think your application requires something other than a standard flashing you might be able to use the Extreme Angle **Master Flash®**, but definitely use our Roof Pitch Calculator and take the guess work out of your job.

## **Q: DO I NEED TO USE SEALANT AND/OR A HOSE CLAMP AT THE TOP OF THE FLASHING?**

**A:** The standard flashing operates off a simple compression seal. Regular flashings (non-retrofit/non split items) are normally cut 20% smaller than the penetration you are flashing. This tension between the flashing and the pipe provides a water tight compression seal. Therefore, you do not need to use sealant or a hose clamp to complete the seal. Many installers add it anyway, especially in heavy snow load areas, and around the base if needed. Please watch the installation Video at [www.aztecwasher.com](http://www.aztecwasher.com) or on Youtube

## **Q: WHAT TYPE OF SEALANT SHOULD I USE TO ATTACH THE FLASHING TO THE ROOF?**

**A:** You shouldn't use any sealant that is petro-chemical based. We recommend Titebond® in our Installation Kit. However, usually Urethane or Silicone caulking is fine.

## **Q: IS THE FLASHING PAINTABLE?**

**A:** Yes, but only with water-based paints. Please keep in mind that rubber flexes and over time the paint can and might chip and fall off the flashing. The Standard and Universal **Master Flash®** lines come in 12 different colors, matching many of the standard roof colors used in the market today.

## **Q: WHAT SEPARATES MASTER FLASH TO OTHER BRANDS?**

**A:** Master Flash® is the only product that qualifies under the "Buy American Act", is listed with CSA, UPC and uses virgin EPDM. That means that no regrind is used in our flashings which gives it the best performance in all weather conditions

# Master Flash®

## REPLICATED BUT NEVER DUPLICATED!



Universal Master Flash®

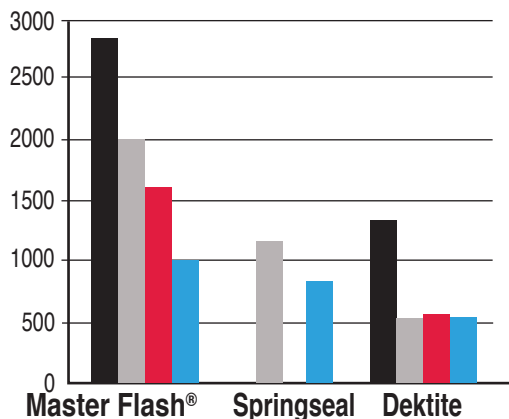


Competitor's Product

\* Graph Key Code:   
 Grey EPDM      Grey EPDM w/ IR Radiation & UV Radiation Aged 70 Hours @ 100°C   
 Black EPDM     Black EPDM w/ IR Radiation & UV Radiation Aged 70 Hours @ 100°C

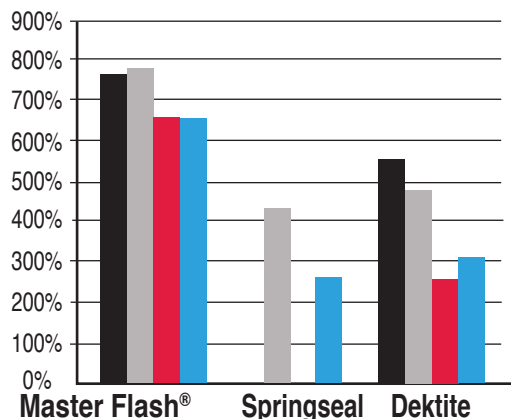
\* Competitor's product picture is representative of a substandard off-shore product, is not meant to depict a Deklite or Springseal product. \* Material test results are from 2012 sample

### Tensile strength



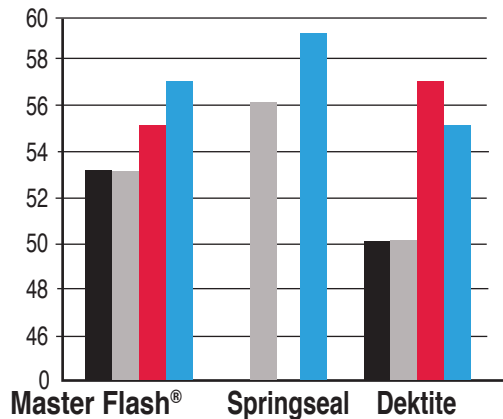
**Tensile strength** - The maximum stress "in pounds" that a material can withstand while being stretched or pulled before snapping, tearing or breaking. After 70 hours at 212° degree F, **Master Flash®** is almost two times stronger than other brands.

### Hardness



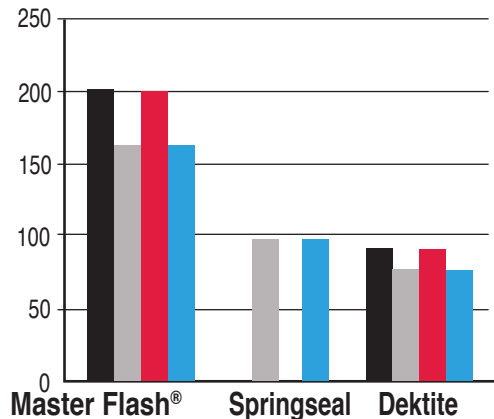
**Hardness** - Harder rubber will tend to breakdown and become brittle faster, meaning it will crack due to UV and sun damage or at the end of the day, leak. **Master Flash®** Hardness increased 4 points after the test while other brands increased 7 points.

### Elongation



**Elongation** - Measures how much rubber stretches before it snaps or breaks. For example: 1" square size of **Master Flash®** would stretch 600% while other brands stretch significantly less. This is very important and makes installation easier and faster when the flashing is cut 20-30% smaller than the pipe. This is equally important over the life of the product as pipes expand and contract with the elements and the flashing needs to accommodate these changes.

### Tear



**Tear** - Measures the pressure a tear in the material can handle before it continues to run down the side of the product. After the standard 70 hour test, **Master Flash®** tear resistance in the Grey actually improved, unlike other brands that lost 50%

## NO REGRIND

- Aztec only uses virgin EPDM on all of our products.  
 We are the manufacturer and control all aspects of our quality.



**Master Flash® 20 & 35 Year Warranty, UPC, IAPMO, CSA and ICC Listed Products!**

# Universal Master Flash® All Around Performance

## All Around Design Excellence

This universal flashing has been designed to fit virtually all panel configurations. Sleeve flexibility absorbs vibration and pipe movement caused by expansion/contraction. Easy on-site customization can accommodate all normal installations.



BROWN



BLACK



DARK GREY



LIGHT GREY



WHITE



DARK GREEN



LIGHT GREEN



DARK BLUE



LIGHT BLUE

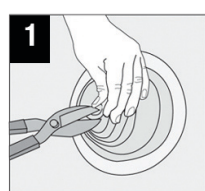
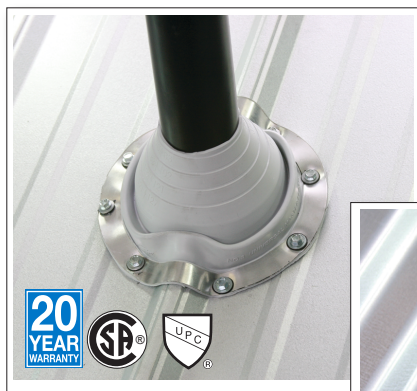


BRIGHT RED

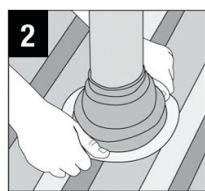


TERRA COTTA

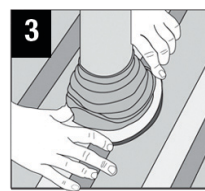
<b>Mini</b> Pipe Range: 0" - 3/4" (0 - 19mm) Top opening: Closed • Overall height: 1-1/2" (38mm) • Base: 4" (101mm)
<b>#1</b> Pipe Range: 1/4" - 2-1/2" (6 - 63mm) Top opening: Closed • Overall height: 3-1/4" (82mm) • Base: 3-1/4" (82mm)
<b>#2</b> Pipe Range: 1-3/4" - 3" (44 - 76mm) Top opening: 1-1/4" (31mm) • Overall height: 4" (101mm) • Base: 6-1/4" (158mm)
<b>#3</b> Pipe Range: 1/4" - 5" (6 - 127mm) Top opening: Closed • Overall height: 4" (101mm) • Base: 7-3/4" (196mm)
<b>#4</b> Pipe Range: 3" - 6-1/4" (76 - 158mm) Top opening: 2-1/4" (57mm) • Overall height: 4-3/4" (120mm) • Base: 9-1/4" (234mm)
<b>#5</b> Pipe Range: 4-1/4" - 7-3/4" (107 - 196mm) Top opening: 3-1/2" (88mm) • Overall height: 4-1/4" (107mm) • Base: 10-1/2" (266mm)
<b>#6</b> Pipe Range: 5" - 9" (127 - 228mm) Top opening: 5" (127mm) • Overall height: 6" (152mm) • Base: 13" (330mm)
<b>#7</b> Pipe Range: 6" - 11" (152 - 279mm) Top opening: 5-1/2" (139mm) • Overall height: 5-1/2" (139mm) • Base: 14-1/2" (368mm)
<b>#8</b> Pipe Range: 7" - 13" (177 - 330mm) Top opening: 6" (152mm) • Overall height: 6" (152mm) • Base: 16-1/2" (412mm)
<b>#9</b> Pipe Range: 9" - 19" (228 - 482mm) Top opening: 7-3/4" (196mm) • Overall height: 9" (228mm) • Base: 25-1/4" (641mm)



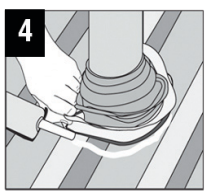
1 Choose pipe opening and trim



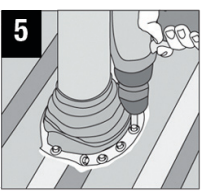
2 Slide over pipe



3 Form to roof profile



4 Apply sealant



5 Fasten to complete



# Standard Master Flash®

The Original



Two Compounds / EPDM / Red Silicone



## OR AVAILABLE IN

# 35 Year Master Flash®

The Only ICC Flashing of it's kind,  
Listed with the Florida & California Building Codes®.

One Compound: Black EPDM

The first ICC listed flashing for the Metal Building Industry with a 35 year warranty



BROWN



BLACK



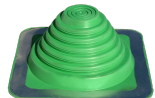
GREY



WHITE



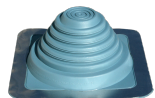
DARK GREEN



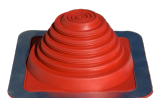
LIGHT GREEN



DARK BLUE



LIGHT BLUE



BRIGHT RED



TERRA COTTA

**Mini** Pipe Range: 1/8" - 3/4" (3 - 19mm)

Top opening: Closed • Cut to suit pipe size: 1/8" - 3/4" (3-19mm) • Base: 2 - 1/4" (57mm)

**#1** Pipe Range: 1/4" - 2-3/4" (6 - 70mm)

Top opening: Closed • Cut to suit pipe size: 1/4" - 2-3/4" (6 - 70mm) • Base: 4-1/2" (114mm)

**#2** Pipe Range: 7/8" - 4" (22 - 101mm)

Top opening: 7/8" (22mm) • Cut to suit pipe size: 7/8" - 4" (22 - 101mm) • Base: 6" (152mm)

**#3** Pipe Range: 1/4" - 5-3/4" (6 - 146mm)

Top opening: Closed • Cut to suit pipe size: 1/4" - 5-3/4" (6 - 146mm) • Base: 8" (203mm)

**#4** Pipe Range: 2-3/4" - 7" (70 - 177mm)

Top opening: 2-1/4" (57mm) • Cut to suit pipe size: 2-3/4" - 7" (70 - 177mm) • Base: 10" (254mm)

**#5** Pipe Range: 4" - 8-1/4" (101 - 209mm)

Top opening: 3-1/2" (89mm) • Cut to suit pipe size: 4" - 8-1/4" (101 - 209mm) • Base: 11" (279mm)

**#6** Pipe Range: 4-3/4" - 10" (121 - 254mm)

Top opening: 3-3/4" (95mm) • Cut to suit pipe size: 4-3/4" - 10" (121 - 254mm) • Base: 12" (304mm)

**#7** Pipe Range: 5-1/2" - 11-1/2" (140 - 292mm)

Top opening: 4-3/4" (120mm) • Cut to suit pipe size: 5-1/2" - 11-1/2" (140 - 292mm) • Base: 14" (355mm)

**#8** Pipe Range: 6-3/4" - 13-1/2" (171 - 343mm)

Top opening: 5-1/2" (140mm) • Cut to suit pipe size: 6-3/4" - 13-1/2" (171 - 343mm) • Base: 17" (431mm)

**#8X Fix-A-Flash** Pipe Range: Closed Top 0" - 15" (0-381mm)

Top opening: Closed • Cut to suit pipe size: Closed 0" - 15" (0-381mm) • Base: 19-1/2" (495mm)

**#9** Pipe Range: 9-1/2" - 20-1/2" (241 - 520mm)

Top opening: 8" (203mm) • Cut to suit pipe size: 9-1/2" - 20-1/2" (241 - 520mm) • Base: 25" (635mm)

**#9X** Pipe Range: 8" - 20-1/2" (203 - 520mm)

Top opening: 6" (152mm) • Cut to suit pipe size: 8" - 20-1/2" (203 - 520mm) • Base: 25" (635mm)

**Maxi Closed** Pipe Range: 0" - 28-1/2" (0 - 724mm)

Top opening: Closed • Cut to suit pipe size: 0" - 28-1/2" (0 - 724mm) • Base: 34" (863mm)

**Maxi Open** Pipe Range: 12" - 28-1/2" (304 - 724mm)

Top opening: 10-1/4" (260mm) • Cut to suit pipe size: 12" - 28-1/2" (304 - 724mm) • Base: 34" (863mm)

**NOTE: Colors are only available for the Standard & Universal Master Flash®**

## Universal Retrofit Master Flash®

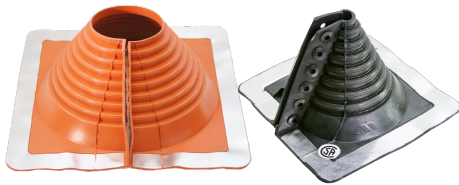


Two Compounds / EPDM / Silicone

- |                                                                                                                                                          |
|----------------------------------------------------------------------------------------------------------------------------------------------------------|
| <b>#1</b> Pipe Range: 3/4" - 2-3/4" (19 - 70mm)<br>Top opening: 3/4" (19mm) • Cut to suit pipe size: 3/4" - 2-3/4" (19 - 69mm) • Base: 6 - 1/4" (158mm)  |
| <b>#2</b> Pipe Range: 2" - 7-1/4" (50 - 184mm)<br>Top opening: 2" (50mm) • Cut to suit pipe size: 2" - 7-1/4" (50 - 184mm) • Base: 10-3/4" (273mm)       |
| <b>#3</b> Pipe Range: 3-1/4" - 10" (95 - 254mm)<br>Top opening: 3-1/4" (50mm) • Cut to suit pipe size: 3-1/4" - 10" (95 - 254mm) • Base: 14-1/2" (368mm) |



## Retrofit Master Flash®



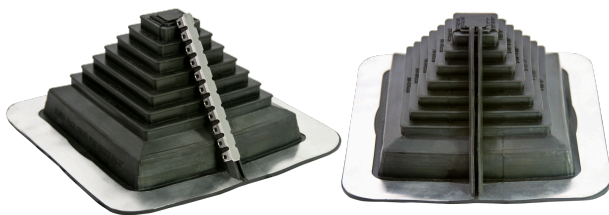
Two Compounds / EPDM / Silicone  
EPDM application plastic zip tie and fastener snaps included.  
Silicone application aluminum zip tie and fastener snaps included.

- |                                                                                                                                                                     |
|---------------------------------------------------------------------------------------------------------------------------------------------------------------------|
| <b>#1</b> Pipe Range: 1/2" - 4" (12 - 101mm)<br>Top opening: 1/2" (12mm) • Cut to suit pipe size: 1/2" - 4" (12 - 101mm) • Base: 8-3/16" (205mm)                    |
| <b>#2</b> Pipe Range: 4" - 9-1/4" (101 - 235mm)<br>Top opening: 4" (101mm) • Cut to suit pipe size: 4" - 9-1/4" (101 - 235mm) • Base: 14-1/4" (362mm)               |
| <b>#3</b> Pipe Range: 9-1/4" - 16-1/4" (235 - 412mm)<br>Top opening: 9-1/4" (235mm) • Cut to suit pipe size: 9-1/4" - 16-1/4" (235 - 412mm) • Base: 21-1/2" (546mm) |



## Multi-Flash Square Vent Master Flash®

Two Applications • One Design



- Compound / EPDM
- Stainless steel gripper to secure a retro custom fit.

- |                                                                                                                                                               |
|---------------------------------------------------------------------------------------------------------------------------------------------------------------|
| <b>#1</b> Pipe Range: Standard 3/8"-5" (20 - 125mm) Retrofit 1-1/2"-4" (38 - 101mm)<br>Top opening: Closed • Overall height: 3-3/4" (95mm) • Base: 8" (203mm) |
|---------------------------------------------------------------------------------------------------------------------------------------------------------------|

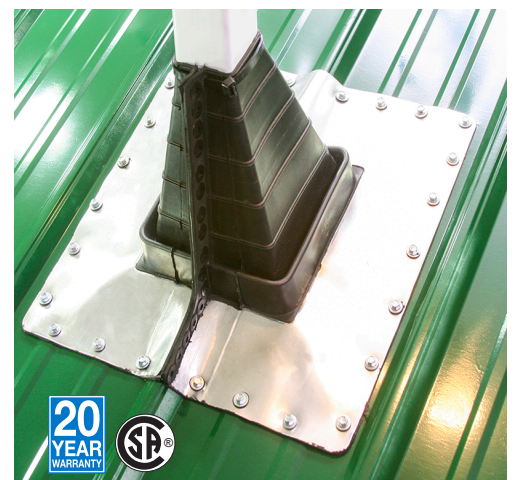


## Square Vent Master Flash®



• Two Sizes / One Compound / EPDM

- |                                                                                                                                                       |
|-------------------------------------------------------------------------------------------------------------------------------------------------------|
| <b>#1</b> Pipe Range: 2-1/2" - 4" (63 - 101mm)<br>Top opening: 2-1/2" (63mm) • Cut to suit pipe size: 2-1/2" to 4" (63-101mm) • Base: 8" (203mm)      |
| <b>#2</b> Pipe Range: 2-1/4" - 5" (57 - 127mm)<br>Top opening: 2-1/4" (57mm) • Cut to suit pipe size: 2-1/4" to 5" (57-127mm) • Base: 15-3/4" (400mm) |



# Multi-Flash Master Flash® "Two Flashings in one"



Two Compounds / EPDM / Silicone

**Mini Port** Pipe Range: Standard 1/4"-2-3/4" (6 - 70mm) Retrofit 1-1/4"-2-1/4" (25 - 57mm)  
 Top opening: Closed • Overall height: 2-1/4" (57mm) • Base: 4-1/2" (114mm)

**#2** Pipe Range: Standard 7/8"- 4" (22 - 101mm) Retrofit 1/2"- 3-1/2" (12 - 89mm)  
 Top opening: 7/8" (22mm) • Overall height: 2-3/4" (70mm) • Base: 6" (152mm)

**#3** Pipe Range: Standard 1/4" - 5-3/4" (6 - 146mm) Retrofit 2" - 4-1/2" (50 - 114mm)  
 Top opening: Closed • Overall height: 3" (76mm) • Base: 8" (203mm)

**#4** Pipe Range: Standard 2-3/4" - 7" (70 - 177mm) Retrofit 2-1/4" - 6-1/2" (57 - 165mm)  
 Top opening: 2-3/4" (70mm) • Overall height: 4-3/4" (120mm) • Base: 10" (254mm)

**#5** Pipe Range: Standard 4" - 8-1/4" (101 - 209mm) Retrofit 3-1/2" - 6-3/4" (90 - 171mm)  
 Top opening: 4" (101mm) • Overall height: 4" (101mm) • Base: 11" (279mm)

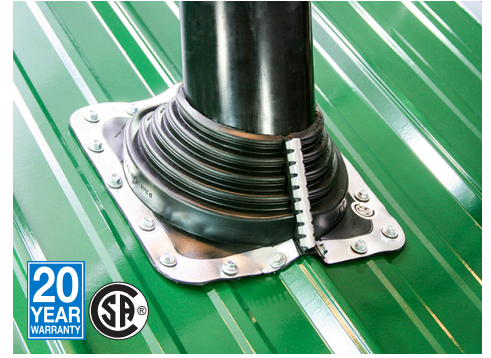
**#6** Pipe Range: Standard 4-3/4" - 10" (121 - 254mm) Retrofit 4-1/4" - 9-1/2" (108 - 241mm)  
 Top opening: 4-3/4" (121mm) • Overall height: 4-1/2" (114mm) • Base: 12" (304mm)

**#7** Pipe Range: Standard 5-1/2" - 11-1/2" (140 - 292mm) Retrofit 5" - 11" (127 - 279mm)  
 Top opening: 5-1/2" (140mm) • Overall height: 5-1/2" (140mm) • Base: 14" (355mm)

**#8** Pipe Range: Standard 6-3/4" - 13-1/2" (171 - 343mm) Retrofit 6-1/2" - 12" (165 - 304mm)  
 Top opening: 6-3/4" (171mm) • Overall height: 5-3/4" (146mm) • Base: 17" (431mm)

**#9** Pipe Range: Standard 9-1/2" - 20-1/2" (241 - 520mm) Retrofit 9" - 20" (228 - 508mm)  
 Top opening: 9-1/2" (241mm) • Overall height: 5-3/4" (146mm) • Base: 25" (635mm)

**Maxi** Pipe Range: Standard 12" - 28-1/2" (305 - 724mm) Retrofit 13" - 27" (330 - 685mm)  
 Top opening: 12" (304mm) • Overall height: 7-1/2" (190mm) • Base: 34" (863mm)



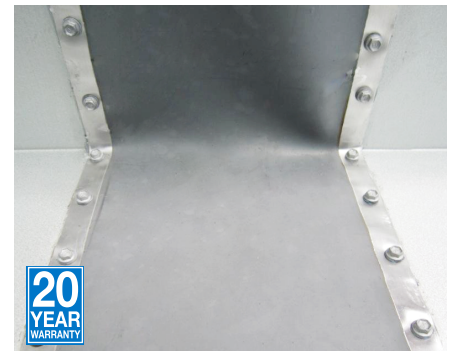
## Box Gutter Expansion Joint Master Flash®



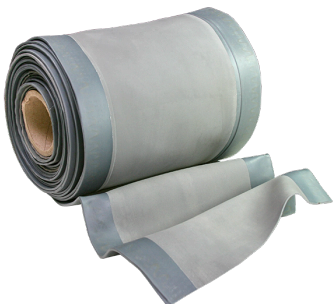
**Applications:**  
 Transition Walls • Parapet Walls • Stepped Roofs  
 Corrugated Metal Roofs • Roof Penetrations  
 Expansion Joint • Skylights

One Compound / EPDM

Width: 9" (228mm) Thick (.059) Available Lengths: 3', 12' & 33'



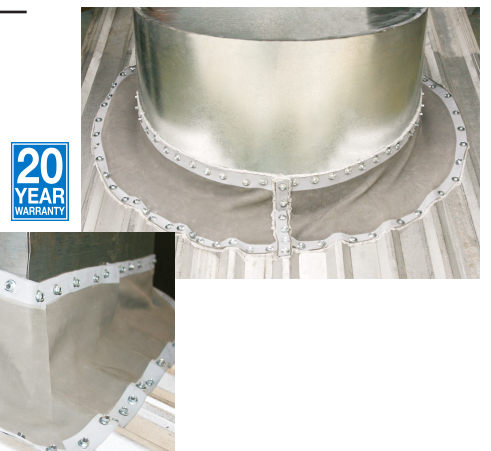
## (SLF) Stretchable Linear Flash Master Flash® Roof Flashing System Stretch and Seal



**Applications:**  
 Transition Walls • Parapet Walls • Stepped Roofs  
 Corrugated Metal Roofs • Roof Penetrations • Square Vents  
 Large Pipes • Skylights

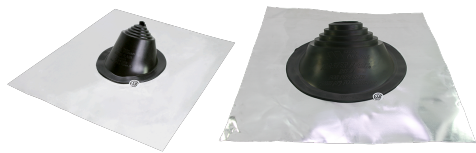
One Compound / EPDM

Width: 11" (280mm) Thick (1.7mm) Available Lengths: 33", 12' & 33'



## Residential Master Flash®

Available in Aluminum or Lead Base.



**Two Compounds EPDM / Red / Grey Silicone**  
 The built in 20° pitch allows adaptability to almost any roof pitch including 45° Self extinguishing feature enables use with type "B" vents



**Mini** Pipe Range: 1/4" - 3" (6 - 76mm)

Top opening diameter: Closed • Pull to suit pipe size: 1/4" - 3" (6-76mm) • Base: 16"X19-1/4" (410X490mm)

**#1** Pipe Range: 3" - 8" (76 - 203mm)

Top opening diameter: 2-1/2" (63mm) • Pull to suit pipe size: 3" - 8" (76- 203mm) • Base: 20"X24" (410X490mm)

**#2** Pipe Range: 8" - 11" (203 - 279mm)

Top opening diameter: 5-5/8" (142mm) • Pull to suit pipe size: 8" - 11" (203- 279mm) • Base: 26"X30" (660X762mm)

**#3** Pipe Range: 11" - 18" (279 - 457mm)

Top opening diameter: Closed • Pull to suit pipe size: 11" - 18" (279 - 457mm) • Base: 35"X35" (889X889mm)

## Electrical Mast Connection Master Flash®

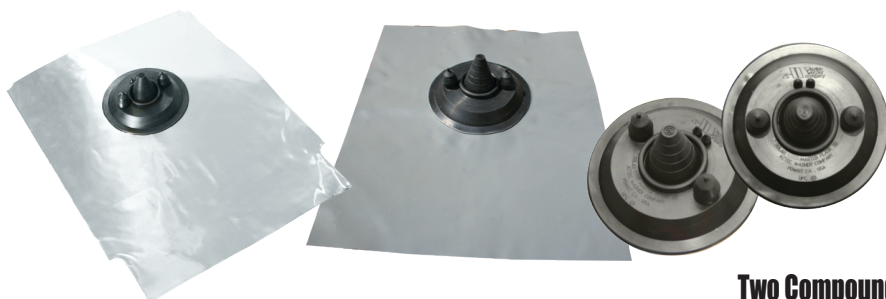


**Two Compounds / EPDM / Red / Grey Silicone**  
 The built in 20° pitch allows adaptability to almost any roof pitch including 45°  
 Stainless steel grippers included



**EMC** Pipe Range: 0"-5-3/8" (0-136mm) Top opening: Closed • Base: 15" (381mm)

## Solar Multi-Port - AL (Aluminum) or LD (Lead) Master Flash®



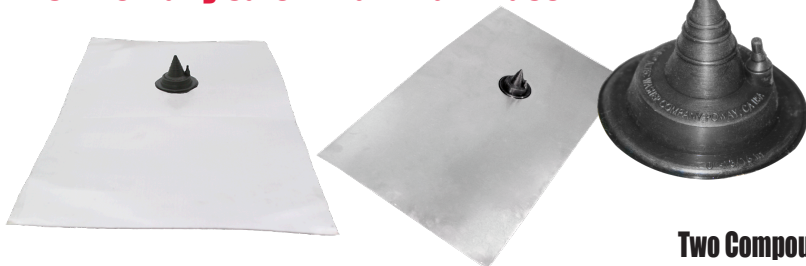
**Two Compounds EPDM / Red Silicone**



**SMP-AL / LD** Pipe Range: ONE Center port: 0" - 1-15/16" (0 - 49mm) Pipe • TWO Side ports: 3/8" (9.6mm) • TWO ports: 3/4" (20mm)  
 Top opening diameter: Closed • Overall height: 2-1/2" (63mm) • Base: AL 17-3/4" x 24" (450 x 600mm) LD 16" X 19-1/4" (410 X 490mm)

## Mini Vertical Aluminum Master Flash®

"Environmentally safe" "Aluminum Base."



**Two Compounds EPDM / Red Silicone**



**Mini Vert** Pipe Range: Center port: 1-15/16" (0 - 49mm) Side port 3/8" (9.6mm)  
 Top opening: Closed • Cut to suit pipe size: 0" 13/16" (0 - 20mm) • Base: Aluminum 17-3/4" x 24" (450 x 600mm)

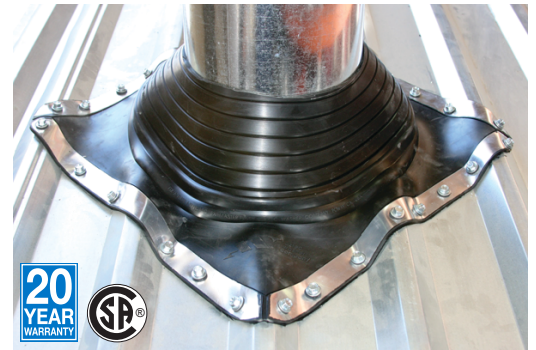


**Fix-A-Flash Master Flash® Oversized hole in your roofing? Aztec has the answer...  
The base is designed for a oversized hole cut for your pipe flashing**



**Two Compounds / EPDM / Red Silicone**

**Fix-A-Flash Closed Top** Pipe Range: 0" - 15" (0 - 381mm)  
Top opening: Closed • Overall height: 0" - 15" (0 - 381mm) • Large Base: 19-1/2" (495mm)



**Extreme Angle Master Flash®**

**The built in 40° degree pitch allows to handle any extreme roof pitch (35° - 65°)**



**Two Compounds / EPDM / Grey Silicone**

**#1** Pipe Range: 1/4" - 5-3/4" (6 - 146mm)  
Top opening: Closed • Cut to suit pipe size: 1/4" - 5-3/4" (6 - 146mm) • Base: 11" (279mm)



**Middy Master Flash®**

**"2 Port Design" Multiple Functions**



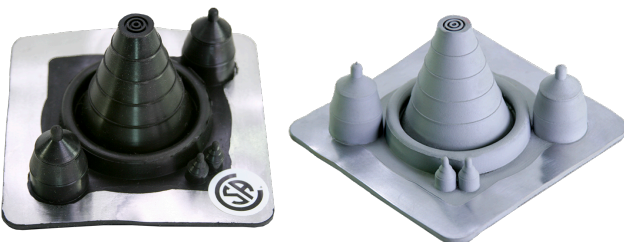
**Two Compounds / EPDM / Red Silicone**

**Middy** Pipe Range: ONE center port: 0" - 2" (0 - 50mm) • One side ports: 1/8" - 3/8" (3-9mm)  
Top opening: Closed • Overall height: 2" (50mm) • Base: 3-3/4" (95mm)



**Solar Multi-Port - MR (Metal Roof) Master Flash®**

**5 Port Design for the Metal Roofing Industry**



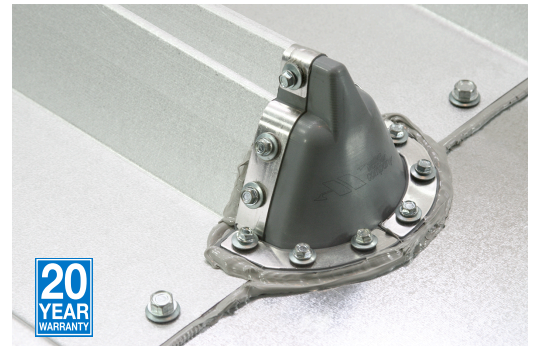
**Two Compounds / EPDM / Red / Grey Silicone**

**SMP-MR** Pipe Range: ONE Center port: 0" - 1-15/16" (0 - 49mm) • TWO Side ports: 3/8" (9.6mm) • TWO ports: 3/4" (20mm)  
Top opening diameter: Closed • Overall height: 2-1/2" (63mm) • Base: 4-1/2" (114mm)



## End Cap Master Flash®

### Standing Seam Roof End Cap Flashing



<b>#Mini</b> Overall Height: 3/4" (19mm) Inner Depth: 2" (50mm) • Base: 2-3/4" (70mm) Wide X 3" (76mm) Long
<b>#1</b> Overall Height: 3" (76mm) Inner Wall Width: 3" (76mm) • Inner Depth: 2" (50mm) • Base: 4-1/4" (107mm)
<b>#2</b> Overall Height: 3-1/4" (83mm) Inner Wall Width: 5-1/4" (133mm) • Inner Depth: 4-1/4" (107mm) • Base: 7-1/4" (184mm)

Flexible width allows for most panel configurations  
Expansion feature accommodates all seam heights allows side wall of end cap to form on roof panels  
Base allows application at both terminating points of the sheeting or roofing material.  
Applications:  
Skylights • Metal Curbs • Ridge Applications • Job site Retrofit

## Solar-Flash Master Flash®

### Specifically designed for solar applications



Two Compounds / EPDM / Red / Grey Silicone  
The pitch canal allows for maximum flexibility, easily accommodating up to a 60° degree pitch without affecting performance.



<b>#1</b> Pipe Range: 3/4"-1" (19 - 25mm) Top opening: .60" (15mm) • Overall height: 2-1/2" (63mm) • Base: 4" (101mm)
--------------------------------------------------------------------------------------------------------------------------

## Mini-Port Master Flash®



Two Compounds / EPDM / Grey Silicone



<b>Mini Port</b> Pipe Range: Center port: 1-15/16" (0 - 49mm) Side port 3/8" (9.6mm) Top opening: Closed • Cut to suit pipe size: 0" 13/16" (0 - 20mm) • Base: 3" (76mm)
-----------------------------------------------------------------------------------------------------------------------------------------------------------------------------

## Solar Multi-Port - CT (Clay Tile) Master Flash®

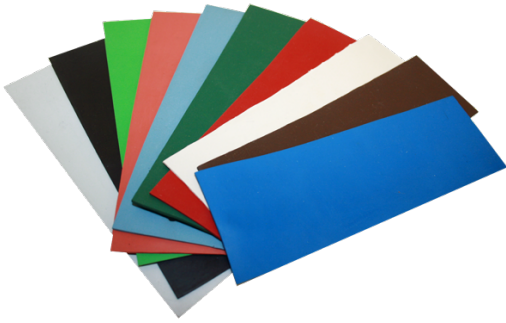
### No Fasteners Required! Just WeatherMaster™ Sealant



One Compound / EPDM

<b>SMP-CT</b> Pipe Range: ONE Center port: 0" - 1-15/16" (0 - 49mm) • TWO Side ports: 3/8" (9.6mm) • TWO ports: 3/4" (20mm) Top opening diameter: Closed • Overall height: 2-1/2" (63mm) • Base: 4-1/2" (114mm)
--------------------------------------------------------------------------------------------------------------------------------------------------------------------------------------------------------------------

As part of a standard classification system for rubber products these general specifications present conservative engineering minimums which should be used for design criteria.



### ISO Quality, Price & Availability / Two Compounds

ADVANCED OZONE RESISTANCE tested to...	EPDM 70 hour @ 500 pphm	RED SILICONE 70 hour @ 500 pphm
HIGH TEMPERATURE RESISTANCE Tested to	Intermittent Continuous	
	+135°C (+275°F) +100°C (+212°F)	+260°C (+500°F) +225°C (+437°F)
LOW TEMPERATURE RESISTANCE tested to...	- 55°C (-67°F)	- 74°C (-101°F)
COMPRESSION SET Maximum...	25%	50%

\*Complete specification data and testing methods are available upon request.

## General Recommendations must be tested for extreme applications

EPDM Master Flash® Engineering Specifications	
ASTM D2000 M3 BA510 A14 B13 C12 F17 Z1 Z2 Z3 Z4 Z5 Z6 Z7	
<b>GRADE 3</b>	
<b>TYPE B</b>	GENERAL TEST TEMP 100C
<b>CLASS A</b>	VOLUME SWELL NO REQ
<b>5</b>	50 DUROMETER (RANGE)
<b>10</b>	TENSILE 10 MPa (APPROX 1450 PSI)
<b>A14</b>	HEAT AGING 70 hrs @ 100C
<b>B13</b>	COMPRESSION SET 22 hrs @ 70C
	MAX 25% ASTM D395B
<b>C12</b>	OZONE RESISTANCE
	70 hrs @ 50pphm ASTM D1171
	100% QUALITY RETENTION
<b>F17</b>	LOW TEMPERATURE BRITTLNESS
	3 min @ -40C PASS ASTM D2137 A, 9.3.2
<b>Z1</b>	55 DUROMETER (SPECIFIC TARGET)
<b>Z2</b>	EPDM (SPECIFIC ELASTOMER)
<b>Z3</b>	HORIZONTAL FLAME RESISTANCE, UL 94
	NOT TO EXCEED 3" / min
<b>Z4</b>	OZONE RESISTANCE ADVANCED REQUIREMENT
	70 hrs @ 500 pphm @ 100F
<b>Z5</b>	ACCELERATED WEATHERING RESISTANCE
	(U.V. LIGHT), ASTM G-53
<b>Z6</b>	TEAR RESISTANCE, ASTM D-624, DIE "C"
<b>Z7</b>	RESISTANCE TO DISCOLORATION, ASTM D-1148 (GREY ONLY)

SILICONE Master Flash® Engineering Specifications	
ASTM D2000 M4 GE 505 A19 B37 C12 F19 G11 Z1 Z2 Z3 Z4	
<b>GRADE 4</b>	
<b>TYPE G</b>	GENERAL TEST TEMP 225C
<b>CLASS E</b>	VOLUME SWELL MAX 80%
<b>5</b>	50 DUROMETER (RANGE)
<b>05</b>	TENSILE 5 MPa (MINIMUM 725 PSI)
<b>A19</b>	HEAT AGING 70 hrs @ 225C
	CHANGE IN HARDNESS MAX + 10 pts
	CHANGE IN TENSILE MAX -30%
	CHANGE IN ULTIMATE ELONGATION MAX -30%
<b>B37</b>	COMPRESSION SET 22 hrs @ 175C
	MAX 50% ASTM D395B
<b>C12</b>	OZONE RESISTANCE
	70 hrs @ 50pphm PASS ASTM D1171
<b>F19</b>	LOW TEMPERATURE BRITTLNESS
	3 min @ -40C PASS ASTM D2137 A, 9. 3. 2
<b>G11</b>	TEAR RESISTANCE, ASTM D-624, DIE "B"
<b>Z1</b>	55 DUROMETER (SPECIFIC TARGET)
<b>Z2</b>	SILICONE (SPECIFIC ELASTOMER)
<b>Z3</b>	HORIZONTAL FLAME RESISTANCE, UL 94
	NOT TO EXCEED 3" / min
<b>Z4</b>	OZONE RESISTANCE ADVANCED REQUIREMENT
	70 hrs @ 500 pphm @ 100F

The "Z" Parameters are proprietary standards adopted by Aztec Washer to more clearly indicate the type of material and its superior performance characteristics as related to the typical pipe flashing environment.

NOTE: the additional of "Z3" to assure compliance with international building codes and "Z4" which clearly exceeds the performance required by the industry standard, "C12".

The Master Flash pipe flashing enjoys the only listing granted to date by the International Association of Plumbing and Mechanical Officials and carries the U.P.C. (Uniform Plumbing Code) seal.

# Master Flash® Pipe Flashing Limited Product Warranty



**Aztec Washer Company, Inc. (“Aztec”),** warrants to the Building Owner (“Customer”) that, subject to the terms, conditions, and limitations stated herein, **Aztec** will replace any **Master Flash®** standard EPDM (ethylene propylene diene monomer) or Silicone pipe flashing products should it fail due to normal weather and/or atmospheric conditions within twenty (20) years after date of installation. **Aztec Washer Company’s** recommended roof pitch criteria on **Master Flash®** standard is from 0–45 degrees of pitch. As used herein “fail” means that the product allows water to leak through the flashing.

## Aztec Master Flash® Terms, Conditions, Limitations

1. Customer shall give **Aztec** written notice within 30 days of failure. Such notice shall set forth the date of installation and the nature of the defect and shall request a return authorization for warranty evaluation.
2. Upon receipt of **Aztec’s** return authorization, Customer shall send the **Master Flash®** product, postpaid and insured, to **Aztec** for warranty evaluation.
3. If, upon **Aztec’s** inspection, **Aztec** determines that the leak or leaks are caused by defects in **Aztec** materials or workmanship supplied or provided by **Aztec** (except as provided in paragraphs Number Four (4) and Number Five (5), **Aztec’s** sole responsibility shall be to replace the defective **Master Flash®** product at no cost to Customer.
4. This warranty shall not be applicable if, in the sole judgment of **Aztec**, any of the following shall occur:
  - a) The **Master Flash®** is damaged by natural disaster or Act of God, including, but not limited to, lightning, gale force wind, hurricane, tornado, or earthquake or:
  - b) The **Master Flash®** is damaged by any act of negligence, accident, or misuse, including, but not limited to, vandalism, civil disobedience, failure of the structure on which the **Master Flash®** is installed, or act of war, or:
  - c) If metal work, petrochemicals, or other installation materials, not furnished by **Aztec**, are used and result in the leak
5. This Warranty shall be null and void if in the sole judgment of **Aztec** any of the following shall occur:
  - a) If material modification is made to the **Master Flash®** including (but not by way of limitation) multiple penetrations, removal of material other than that necessary for appropriate sizing or:
  - b) Failure by the customer to use reasonable care in maintaining the **Master Flash®** and its application area or:
  - c) Application of **Master Flash®** outside its normal application parameters:
    - I) In proximity to temperatures lower than -67 degrees or higher than +250 degrees Fahrenheit, or:
    - II) In contact with petrochemicals or other corrosives, including (but not by way of limitation) roofing materials or:
  - d) Customer fails to comply with any of the terms or conditions stated herein.
6. During the term of this Warranty, **Aztec**, its agents or employees, shall be given free access during business hours to the application area.
7. **Aztec** shall have no obligation under this Warranty unless and until Customer shall fully pay the full purchase price to the authorized **Aztec Master Flash®** distributor.
8. **Aztec’s** failure at any time to enforce any of the terms or conditions stated herein shall not be construed to be a waiver of such provision.
9. This Warranty supersedes and is in lieu of any and all other express and implied warranties.

THERE ARE NO WARRANTIES WHICH EXTEND BEYOND THE FACE HEREOF. AZTEC SHALL NOT UNDER ANY CIRCUMSTANCES BE LIABLE FOR ANY INCIDENTAL OR CONSEQUENTIAL DAMAGES RESULTING FROM ANY BREACH OF WARRANTY. NO REPRESENTATIVE OF AZTEC HAS AUTHORITY TO MAKE ANY REPRESENTATIONS OR PROMISES EXCEPT AS STATED HEIN.

To see our complete product line go to: [www.aztecwasher.com](http://www.aztecwasher.com)



Master Flash®, Universal Master Flash®, Multi-Flash®, and Master Seal®, are trademarks of Aztec Washer Co., Inc. For technical support call: 1-800-WASHER 5 (927-4375) (outside CA only) CA callers: (858) 513-4350