



OBRIEN
WATERSPORTS

VOL.
54



TABLE OF CONTENTS

01	PARK BOARDS
09	BOAT BOARDS
21	WAKE BINDINGS
29	WAKESURFERS
35	SUP
43	SLALOM SKIS
51	SKI BINDINGS
55	COMBO SKIS
61	KNEEBOARDS
65	TUBES
91	FOAM/INFLATABLE MATS
99	VESTS
109	ROPES AND HANDLES
117	GLOVES
118	BAGS AND CASES
119	COOL STUFF
120	APPAREL

PRO TEAM

SIGNATURE WAKE

COBE MIKACICH
CORY TEUNISSEN
JEFF LANGLEY
SEAN O'BRIEN
TARAH MIKACICH

PRO WAKE

PARKER SIEGLE
ROBBY HOLIHAN
DAVID O'CAOIMH
GUNNAR SHULER
MAX VAN HELVOORT
GUNNER DAFT
DANNY BURNSTEIN
DANIEL MILES
DARY ZNEBEL
JOE BATTLEDAY
JACK BATTLEDAY
CK KOESTER
MATT CROWHURST
DAVID REGNERY
CHRIS KLEIN
JACK HAMMERSLEY
IZZY GOODE
JOE HUMPHRIES

PRO KNEEBOARD

JOHN HAILE
ALISA PIPER
TOM KOHL
KENT HARTSHORN
SPENCER LEGGETT
TED BEVELACQUA
NICK SAULS
ADRIAN MEUS
DAN LEWIS
IAN WILKINSON
RYAN DAVIS
RYAN FLEX KYLE
RYAN PENLEY
ANDREA SBRISIA
SHANE CANNON

PRO WAKESURF

HUNTER SIMS

PRO SLALOM

GLENN CAMPBELL
DREW ROSS

REGIONAL AND INTERNATIONAL TEAM

VISIT O'BRIEN.COM

PRODUCT TECH



PRESS-PASS

Designed specifically for the cable park, the Press-Pass exaggerates the transitions on the 5-Stage rocker creating distinct flat spots at the tip and tail, underneath the bindings, and in the middle of the board. These flat spots generate an explosive ollie and provide a more stable base to land, balance, and press on rails, kickers, and other park features.



CONTINUOUS ROCKER

With an even curve from tip to tail, this balanced rocker line is extremely consistent, easy to control, and rolls up the wake for a smooth predictable pop.



PROGRESSIVE ROCKER

Similar to our Continuous Rocker but with a more kicked up tip and tail, resulting in more vertical pop than a Continuous Rocker and more predictability than a 3-Stage.



5-STAGE ROCKER

Based off the 3-Stage, this rocker line maintains a flatter profile between the bindings but features a more blended transition towards the tip and tail. This creates an effortless glide across the water and gives the board a predictable yet amplified pop off the wake.



3-STAGE ROCKER

This rocker line is generally flatter between the bindings but dramatically angles upward towards the tip and tail. This explosive rocker line generates a more aggressive and vertical pop off the wake.



DELTA BASE TECHNOLOGY

"Chevron" shaped channels molded into the tip and tail of the board reduce drag for faster edging and a cleaner release off the wake.



FLEX TECHNOLOGY

Specific layups designed to flex in just the right places, giving you a board that explodes off the water, softens landings, and presses features with ease.



IMPACT BASE

Fully sintered high-density polyethylene base material that holds up to seasons of shredding rails, kickers, ledges, and whatever else you muster up.



FUSION CORE

Two wood stringers sandwiched next to our Feather Core foam. 5 times more durable than traditional foam and enhances the board's snap and pop off the wake.



FEATHER CORE

Feather Core reduces the board's swing weight for more midair control, while simultaneously maintaining its profile up the face of the wake for maximum pop.



WOOD CORE

Paulownia wood core for minimum weight, maximum durability, and an organic feel. Our wood core ensures your board will withstand seasons of shredding.



6mm INSERTS

Industry standard 6mm inserts. So if you happen to loose your bolts, borrow some from a friend or make a quick trip to any hardware store.



DURARAIL SIDEWALLS

Impact resistant urethane rail that runs around the entire edge of the board; protecting the core from any hazard you throw its way.



SURF STYLE

Using larger fins and a rounder rail, these boards have a surf inspired feel with their flowy turns, powerful hacks, lightning speed, and ability to boost big airs.



SKIM STYLE

Using smaller fins and a sharper rail, these boards have a loose, skatey feel on the water making it easier to complete surface spins and more skate inspired moves.



CONCAVE TUNNEL

Narrow tunnel that provides more speed and predictable tracking.



MOLDED IN FINS

Quad molded in fins.



CARBON FIBER LAYUP

Aerospace grade carbon fiber fabric that provides a quantum jump in performance over traditional fiberglass with unmatched strength to weight ratios.



BIOLITE

Eco-friendly material that looks and feels like neoprene, but contains no rubber foam or Volatile Organic Compounds, making it the most environmentally friendly life jacket material on the market.



INFLATABLE SUP

Safe, stable, lightweight, durable, and easy to store. You can't go wrong! Dual action pump included.



This patented valve is easy to use, has no parts to lose, and lets you inflate and deflate your tube nearly twice as fast as before!



SOFT TOUCH NYLON

Industry exclusive fabric, our softest ride yet! Covers the entire riding surface, eliminating unnecessary seams, to enjoy your ride all day without abrasion!



TWICE THE FUN!

Pulls both directions. Quick connect hooks on both sides.



DURABLE AND SOFT FELT TOP -NO PADS NEEDED-



LOW PROFILE DESIGN

35% thinner. Easier to get on!

PARK

BOARDS



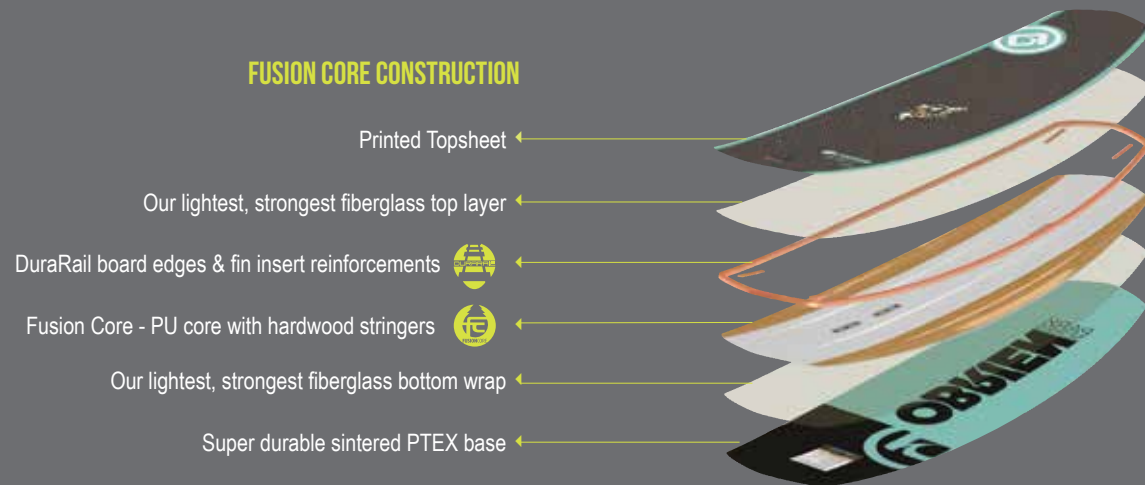
TEAM RIDER: MAX VAN HELVOORT

BOARD TECH

WOOD CORE CONSTRUCTION



FUSION CORE CONSTRUCTION



FEATHER CORE CONSTRUCTION



PARK
BOAT

More flexible park boards are easier to press

More flexible boat boards tend to land softer and have a slightly slower release off the wake

FLEXIBLE 1 <--> 10 STIFF

FLEXIBLE 1 <--> 10 STIFF

Stiffer park boards provide a more solid platform on rails & more spring back off kickers

Stiffer boat boards tend to snap off the wake with no energy loss as well as release more quickly.



FADE PARK SERIES

The Fade was designed to make you a better park rider! Our exclusive Press Pass rocker makes pressing a breeze with extended flat spots to help lock you in over the nose or tail. This rocker line, combined with our 100% Paulownia Wood Core explodes off kickers, so get ready to get booted. With its Wood Core, Durarail sidewalls, and Impact Base, the Fade was built with durability in mind and will keep you charging season after season.



FLEXIBLE 1 • 2 • 3 • 4 • 5 • 6 • 7 • 8 • 9 • 10 STIFF

FADE 138

FADE 143

LENGTH	138cm / 54.3"	143cm / 56.3"
WIDTH	43.7cm / 17.2"	44.2cm / 17.4"
ROCKER	3.25 Press Pass	3.4 Press Pass
STANCE	22 24 26	23 25 27
WT. LIMIT	140-220lbs	170-250lbs
FIN SET-UP	Blunt 0.5	Blunt 0.5



GTX



PLAN B



S.O.B. PRO PARK SERIES

The S.O.B. may be the most versatile board on the market. Initially designed to appeal to the needs of the hard-charging cable crowd, the S.O.B. has it all; Impact Base, Durarail sidewalls, Fusion Core, minimal channeling and a concave hull. Its refined flex pattern feels snappy under your feet allowing for huge ollies, explosive pop off kickers, effortless pressing and smooth landings. What's even more impressive is that this "park board" excels behind the boat as well. Sean swears that it's the best board he has ever ridden behind the boat and based on how he's riding and how much fun he's been having on the water this just might be your go to "boat board" as well.



FLEXIBLE 1 • 2 • 3 • 4 • 5 • 6 • 7 • 8 • 9 • 10 STIFF

Sean O'Brien

SEAN O'BRIEN
PRO MODEL



GTX



PLAN B

	S.O.B 132	S.O.B 136	S.O.B 140	S.O.B 144
LENGTH	132cm / 52"	136cm / 53.5"	140cm / 55.1"	144cm / 56.7"
WIDTH	42.9cm / 16.9"	43.4cm / 17.1"	43.9cm / 17.3"	44.3cm / 17.45"
ROCKER	2.53 Progressive	2.72 Progressive	2.91 Progressive	3.1 Progressive
STANCE	21 23 25	22 24 26	23 25 27	23 25 27
WT. LIMIT	90-170lbs	140-220lbs	170-250lbs	190-250+lbs
FIN SET-UP	Blunt 0.8	Blunt 0.8	Blunt 0.8	Blunt 0.8



INDIE PARK SERIES

Featuring a park-specific design built around a 100% hardwood core, the Indie delivers the optimum park riding experience with tons of flex on rails and a snappy pop off kickers. With its center tunnel running the entire length of the board, the Indie self-centers and locks onto rails with ease. Not only does this reduce friction on the rails, but it assists in tracking as well. To give this finless ride a little more bite, the Indie incorporates a series of stepped channels running along the rails, adding the perfect amount of traction on the water without sacrificing performance on obstacles. Finished off with our ultra durable Impact Base and Durarail Sidewalls, the Indie is sure to make your next trip to the park your best one.



FLEXIBLE 1 • 2 • 3 • 4 • 5 • 6 • 7 • 8 • 9 • 10 STIFF

	INDIE 136	INDIE 140	INDIE 144
LENGTH	136cm / 53.5"	140cm / 55.1"	144cm / 56.7"
WIDTH	43.2cm / 17"	43.7cm / 17.2"	44.2cm / 17.4"
ROCKER	3.01 Progressive	3.16 Progressive	3.35 Progressive
STANCE	21 23 25	22 24 26	23 25 27
WT. LIMIT	90-170lbs	140-220lbs	170-250lbs
FIN SET-UP	Finless	Finless	Finless



GTX



PLAN B



STILETTO PARK SERIES

For all the women shredding the park, here is your new board! With its high performance freeride feel, the Stiletto will take your riding to new levels. The smooth, transitional flex pattern of the Fusion Core makes the board firm enough between your feet for an explosive pop off kickers, yet soft and flexy at the tip and tail for effortless pressing and impact dampening. Its concave base keeps the board riding high on the water; reducing drag therefore minimizing fatigue, so you can keep charging all day. Armed with O'Brien's signature Impact Base and Durarail, the Stiletto is capable of handling any park feature in its path. You'll ollie higher than ever before, land tech tricks you've only dreamed of, and only take a break when the cable operator cuts you off.



FLEXIBLE 1 • 2 • 3 • 4 • 5 • 6 • 7 • 8 • 9 • 10 STIFF



GTX



PLAN B



FREMONT PARK SERIES

Affordable and durable, the Fremont is the perfect board to get you started in the park. Its ultra light Feather Core provides a firm platform between the bindings and a soft, forgiving flex in the tip and tail. This gives the board a smooth, freeride feel on the water and plenty of performance on rails and kickers. It's featureless base and removable fins promote proper edge control for beginner and intermediate riders, so there's no cheating here. From day one, this board will help you learn to ride the proper way and ultimately allow you to take your riding to whatever level you desire. Since we know that it won't take long before you start playing around on the park features, we've armed the Fremont with Durarail Sidewalls to handle the inevitable abuse you'll put it through as your riding progresses.



FLEXIBLE 1 • 2 • 3 • 4 • 5 • 6 • 7 • 8 • 9 • 10 STIFF



PLAN B



CONNECT

STILETTO 132 STILETTO 136

LENGTH	132cm / 52"	136cm / 53.5"
WIDTH	42.9cm / 16.9"	43.4cm / 17.1"
ROCKER	2.53 Progressive	2.72 Progressive
STANCE	21 23 25	22 24 26
WT. LIMIT	90-170lbs	140-220lbs
FIN SET-UP	Blunt 0.8	Blunt 0.8

FREMONT 133 FREMONT 138 FREMONT 143

LENGTH	133cm / 52.4"	138cm / 54.3"	143cm / 56.3"
WIDTH	43.1cm / 16.95"	43.6cm / 17.15"	44.1cm / 17.35"
ROCKER	2.5 Progressive	2.7 Progressive	2.95 Progressive
STANCE	21 23 25	22 24 26	23 25 27
WT. LIMIT	90-170lbs	140-220lbs	170-250lbs
FIN SET-UP	Blunt 0.8	Blunt 0.8	Flank 0.7

BOAT BOARDS



PRO RIDER: CORY TEUNISSEN

new
EXCLUSIVE
PRO BOAT SERIES

For 2018, Cory Teunissen decided it was time to upgrade his pro model board and take everything to a whole new level. Here it is, the all-new Exclusive. Cory describes this board as a CTP on steroids. It's faster, more explosive off the wake, and, thanks to a full-length center spine, lands softer than any board he's ever ridden. Even though the Exclusive is a brand new shape, he kept the rocker line, the thin profile, the variable beveled edge, and the full step-down rail almost identical to the CTP to maintain similar ride characteristics. Everything else is different. The board is wider, the tip and tail have a slightly different shape, but the biggest difference is the completely redesigned base contouring. Not only does the board have the center spine, but it also utilizes an intricate channel system combined with inset fins for greater efficiency and hold while edging, simultaneously making the board feel loose and free while riding flat. The fact that Cory, the 2016 World Champion and 2017 Masters Champion, is willing to retire the board that took him to the top of so many podiums and shift over to the Exclusive means that this board is special. We can't wait to see how much impact it has on everyone's riding.



FLEXIBLE 1 • 2 • 3 • 4 • 5 • 6 • 7 • 8 • 9 • 10 STIFF

Cory Teunissen
CORY TEUNISSEN
PRO MODEL



INFUSE



LINK

EXCLUSIVE 136 **EXCLUSIVE 141**

LENGTH	136cm / 53.5"	141cm / 55.5"
WIDTH	43.1cm / 16.95"	43.6cm / 17.15"
ROCKER	2.3 3-Stage	2.4 3-Stage
STANCE	22 24 26	23 25 27
WT. LIMIT	80-160lbs	120-200lbs
FIN SET-UP	Flank 0.7	Flank 0.7



* DIAMOND TEXTURE DECK



ROME
PRO BOAT SERIES

Looking to get booted like Jeff Langley? The Rome is a great place to start. This super stiff board utilizes a wider profile and a 5-Stage Rocker to maximize lift off the wake. Normally you'd have to worry about the repercussions of going too high, but with the Rome's center spine, hard landings are a thing of the past. With its width, floaty Feather Core, Delta Base and bottom channeling, the Rome is a perfect board for intermediate to advanced riders looking for the ultimate relaxed, freeride feel.



FLEXIBLE 1 • 2 • 3 • 4 • 5 • 6 • 7 • 8 • 9 • 10 STIFF

Jeff Langley
JEFF LANGLEY
PRO MODEL



INFUSE



LINK

ROME 138 **ROME 143**

LENGTH	138cm / 54.3"	143cm / 56.3"
WIDTH	43.7cm / 17.2"	44.2cm / 17.4"
ROCKER	2.3 5-Stage	2.44 5-Stage
STANCE	22 24 26	23 25 27
WT. LIMIT	140-220lbs	170-250lbs
FIN SET-UP	Flank 0.7	Flank 0.7



SPARK PRO BOAT SERIES

Tarah Mikacich's incessant desire for fun on the water has met its match with the fun-filled ride of the Spark. With its thinned out Feather Core, 3-Stage Rocker and full step-down rail, the Spark sits a little deeper in the water; delivering effortless edge control and a predictable, punchy pop off the wake that will bring a smile to anyone's face. With a triple concave hull and a Delta Base, the Spark has everything a pro rider wants, but is also the perfect choice for anyone looking for a stable platform to progress their riding.



FLEXIBLE 1 • 2 • 3 • 4 • 5 • 6 • 7 • 8 • 9 • 10 STIFF

Tarah Mikacich
TARAH MIKACICH
PRO MODEL



SPARK



LINK

	SPARK 133	SPARK 137
LENGTH	133cm / 52.4"	137cm / 53.9"
WIDTH	42.7cm / 16.8"	43.2cm / 17"
ROCKER	2.37 3-Stage	2.55 3-Stage
STANCE	21 23 25	22 24 26
WEIGHT LIMIT	90-170lbs	140-220lbs
FIN SET-UP	Flank 0.7	Flank 0.7



FORMAT BOAT SERIES

The consistent, predictable ride of the Format makes it a great board for beginners and advanced riders alike. The combination of its Progressive Rocker, Delta Base and Center Spine gives the Format a stable yet playful feel on the water and a smooth, effortless pop off the wake. If you are looking for an easy to ride board to help you build confidence in your riding, definitely check out the Format.



FLEXIBLE 1 • 2 • 3 • 4 • 5 • 6 • 7 • 8 • 9 • 10 STIFF

	FORMAT 137	FORMAT 142
LENGTH	137cm / 53.9"	142cm / 55.9"
WIDTH	43.5cm / 17.11"	43.8cm / 17.26"
ROCKER	2.4 Progressive	2.6 Progressive
STANCE	22 24 26	23 25 27
WEIGHT LIMIT	140-220lbs	170-250lbs
FIN SET-UP	Flank 1.1	Flank 1.1



LINK



ACCESS



VALHALLA BOAT SERIES

The Valhalla keeps delivering a ride that everyone loves. Its new contouring and balanced thickness profile have taken an easy to ride board and made it even more forgiving to benefit beginner and intermediate riders. Its Feather Core, new thickness profile and molded fins give the Valhalla tons of control from edge to edge making it an ultra reliable shape. The new contouring, along with its Progressive Rocker and Delta Base, generates a smooth, controlled pop off the wake; allowing the rider to maintain control in the air and build confidence in their riding.



FLEXIBLE 1 • 2 • 3 • 4 • 5 • 6 • 7 • 8 • 9 • 10 STIFF



133

138

143



ACCESS



CLUTCH

	VALHALLA 133	VALHALLA 138	VALHALLA 143
LENGTH	133cm / 52.4"	138cm / 54.3"	143cm / 56.3"
WIDTH	42.2cm / 16.6"	42.7cm / 16.8"	43.2cm / 17"
ROCKER	2.25 Progressive	2.35 Progressive	2.5 Progressive
STANCE	21 23 25	22 24 26	23 25 27
WT. LIMIT	80-160lbs	130-210lbs	165-250lbs
FIN SET-UP	Flank 1.35	Flank 1.35	Flank 1.35



HOOKY BOAT SERIES

Behind the boat and in the park, there is no better board for young rippers than the Hooky. Designed specifically to enhance the performance of smaller/lighter riders, the Hooky uses its forgiving shape, reduced width and Feather Core for superior maneuverability and easy edging. Its Progressive Rocker gives the rider a nice kick off the wake giving them plenty of time to add more moves to their bag of tricks. With its Dual Hybrid Rail Construction and Durarail tip and tail, the Hooky can also handle your local cable park with ease. These features make the board extremely durable and capable of handling all of the abuse these riders put their equipment through.



FLEXIBLE 1 • 2 • 3 • 4 • 5 • 6 • 7 • 8 • 9 • 10 STIFF

	HOOKY 111	HOOKY 118	HOOKY 123	HOOKY 128
LENGTH	111cm / 43.7"	118cm / 46.5"	123cm / 48.4"	128cm / 50.4"
WIDTH	38.1cm / 15"	38.1cm / 15"	42.2cm / 16.6"	42.2cm / 16.6"
ROCKER	1.9 Progressive	2.1 Progressive	2.3 Progressive	2.4 Progressive
STANCE	18 20 22	18 20 22	20 22 24	20 22 24
WT. LIMIT	40-120lbs	50-130lbs	60-140lbs	70-150lbs
FIN SET-UP	Flank 0.7	Flank 0.7	Flank 0.7	Flank 0.7



JR. NOMAD



JR. ACCESS



PIXEL BOAT SERIES

The Pixel is the perfect board for beginner and intermediate riders looking to progress their boat riding. This forgiving board rides a little higher in the water, reducing drag and making it easier for the rider to take longer sets. This extra time on the water makes all the difference in the world when it comes to progression, especially in the early stages of riding. The Pixel's long molded fins assist the board in transitioning from rail to rail and help it lock onto its edge when cutting into the wake. At that point, the Progressive Rocker and Delta Base work together to provide a consistently smooth and predictable pop off the wake; giving the rider plenty of control in the air.



FLEXIBLE 1 • 2 • 3 • 4 • 5 • 6 • 7 • 8 • 9 • 10 STIFF

new SPRITE BOAT SERIES



The Sprite is a great first board for kids just getting into the sport or the perfect board to keep on your boat for any friends who want to try their hand at wakeboarding. Its Continuous Rocker keeps the board stable on the water and predictable off the wake. The Sprite uses dual channels at the tip and tail and center mounted Flank Fins to ensure predictable tracking and easy edging. The Sprite has an extra buoyant foam core making it easy to get up and out of the water.



FLEXIBLE 1 • 2 • 3 • 4 • 5 • 6 • 7 • 8 • 9 • 10 STIFF

PIXEL 132

LENGTH 132cm / 52"
WIDTH 42.2cm / 16.6"
ROCKER 2.25 Progressive
STANCE 21 23 25
WT. LIMIT 80-160lbs
FIN SET-UP Flank 1.35

PIXEL 137

LENGTH 137cm / 53.9"
WIDTH 42.5cm / 16.75"
ROCKER 2.35 Progressive
STANCE 22 24 26
WT. LIMIT 130-210lbs
FIN SET-UP Flank 1.35



ACCESS



NOVA

SPRITE 119

LENGTH 119cm / 46.9"
WIDTH 38.1cm / 15"
ROCKER 2.1 Continuous
STANCE 18 20 22
WT. LIMIT 40-120lbs
FIN SET-UP Attack 1.4

SPRITE 124

LENGTH 124cm / 48.8"
WIDTH 40cm / 15.75"
ROCKER 2.15 Continuous
STANCE 20 22 24
WT. LIMIT 60-140lbs
FIN SET-UP Attack 1.4

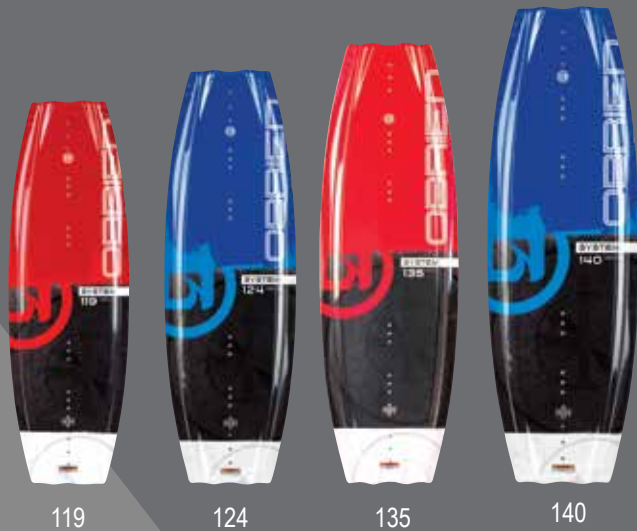


JR. NOVA



SYSTEM BOAT SERIES

The System offers performance at an affordable price. Its Continuous Rocker keeps the board stable on the water and predictable off the wake. The System also uses dual channels at the tip and tail and center mounted Flank Fins to ensure predictable tracking and easy edging. To top it off, its extra buoyant foam core makes getting up and out of the water as effortless as can be. These features make the System a great first board for anyone just getting into the sport or the perfect board to keep on your boat for any friends who want to try their hand at wakeboarding.



119

124

135

140

SYSTEM 119 SYSTEM 124 SYSTEM 135 SYSTEM 140

LENGTH	119cm / 46.9"	124cm / 48.8"	135cm / 53.1"	140cm / 55.1"
WIDTH	38.1cm / 15"	40cm / 15.75"	42.5cm / 16.75"	42.9cm / 16.9"
ROCKER	2.1 Continuous	2.15 Continuous	2.25 Continuous	2.35 Continuous
STANCE	18 20 22	20 22 24	21 23 25	22 24 26
WT. LIMIT	40-120lbs	60-140lbs	100-180lbs	140-230lbs
FIN SET-UP	Attack 1.4	Attack 1.4	Attack 1.4	Attack 1.4



FLEXIBLE 1 • 2 • 3 • 4 • 5 • 6 • 7 • 8 • 9 • 10 STIFF



CLUTCH / JR. CLUTCH



SIREN BOAT SERIES

Like the System, The Siren's Continuous Rocker keeps the board stable on the water and predictable off the wake. The Siren also uses the same dual channels at the tip and tail and center mounted Flank Fins to ensure predictable tracking and easy edging.

LENGTH	135cm / 53.1"
WIDTH	42.5cm / 16.75"
ROCKER	2.25 Continuous
STANCE	20 22 24
WT. LIMIT	100-180lbs
FIN SET-UP	Flank 1.35



FLEXIBLE 1 • 2 • 3 • 4 • 5 • 6 • 7 • 8 • 9 • 10 STIFF



NOVA

WAKE

BINDINGS



PRO RIDER: JEFF LANGLEY

BINDING TECH

POWER ARCH

- Provides more arch support during normal riding conditions.
- Minimizes the amount your foot rolls inward on hard landings, reducing stress on your knees.

LASTED CONSTRUCTION

Shaped to the contours of a foot to make a left and right specific binding.

OFF AXIS ROTATION SYSTEM

Equal heel & toe leverage while achieving perfect alignment.

CANTED 2.5°

INDUSTRY FIRST CANTED CHASSIS

The chassis is canted 2.5 degrees inward generating a more natural alignment and leg position when riding.

- More support to the outside of the foot provides improved control.
- Reduces stress and fatigue on the knees and ankles for a more comfortable, longer ride.

LUX CHASSIS

Our lightest and most rigid chassis ever. Maximum comfort, response and no heel/toe lift.

BINDING SIZING

MENS	USA	2-4	4-6	6-8	8-10	9-11	11-13	12-14
	UK	1-3	3.5-5	5.5-7	7-9	8-10	10-12	11-13
	EUR	33-36	36-39	39-41	41-43	42-44	44-46	45-47
	CM	20.6-22.2	22.2-23.5	23.5-25.4	25.4-27	26-27.9	27.9-29.4	28.6-30.2
WOMENS	USA	2-5	4-7	5-8	6-9	8-11	*Please note: Closed toe bindings fit by width, thickness and length. Open toe bindings fit by foot width and thickness, but not length. Therefore this chart should only be used as a general guide. We recommend that you try on before purchasing. Bindings will soften for a looser fit with use.	
	UK	1-4	2-5	3-6	4-7	6-9		
	EUR	33-37	35-38	35-39	36-40	38-42		
	CM	20.6-23.2	20.8-23.5	21.6-24.1	22.5-25.1	24.1-26.7		

GTX
PRO SERIES



SIZES: 4-6 / 6-8 / 8-10 / 9-11 / 11-13 / 12-14

AVAILABLE IN



GRAY



BLACK

► FEATURES:

UPPER: 3 low profile, flexible Velcro straps for perfect fit and easy adjustment. Therma-welded upper for minimal weight, maximum drainage and durability.

LINER: Ultralight **Structure 2.0** Liner – New liner provides lighter weight, greater comfort and control.

CHASSIS: LUX 2.5° Canted Chassis – Immediate heel/toe response, canted to ease stress on your legs.

FOOTBED: Orthotic comfort and support, enhanced by our Power Arch which supports your arch on bigger landings. Sizes graded to fit your foot like a shoe.



new
INFUSE
PRO SERIES



SIZES: 2-4 (Jr. Size) / 4-6 / 6-8 / 8-10 / 9-11 / 11-13 / 12-14

AVAILABLE IN



RED



BLACK

► FEATURES:

UPPER: Single panel upper for the softest most flexible fit ever. Therma-welded upper for minimal weight, maximum drainage and breathability. The Integrated TPU Ankle Strap pulls your foot into the "heel pocket".

LINER: Ultralight **Structure 2.0** Liner – New liner provides lighter weight, greater comfort and control.

CHASSIS: LUX 2.5° Canted Chassis – Immediate heel/toe response, canted to ease stress on your legs.

FOOTBED: Orthotic comfort and support, enhanced by our Power Arch which supports your arch on bigger landings. Sizes graded to fit your foot like a shoe.

LACING: Dual lace zones for pinpoint adjustment all over your foot. Traditional thick laces provide the most secure fit and durability. Your boots won't loosen up while riding.



SPARK
PRO SERIES



SIZES: 4-7 / 6-9 / 8-11

► FEATURES:

UPPER: Single panel upper for the softest most flexible fit ever. Therma-welded upper for minimal weight, maximum drainage and breathability. The Integrated TPU Ankle Strap pulls your foot into the "heel pocket".

LINER: Ultralight Liner – ultimate comfort & light weight combined.

CHASSIS: LUX 2.5° Canted Chassis – Immediate heel/toe response, canted to ease stress on your legs.

FOOTBED: Orthotic comfort and support, enhanced by our Power Arch which supports your arch on bigger landings. Sizes graded to fit your foot like a shoe.

LACING: Dual lace zones for pinpoint adjustment all over your foot. Traditional thick laces provide the most secure fit and durability. Your boots won't loosen up while riding.



PLAN-B
OPEN TOE SERIES



SIZES: 4-6 / 6-8 / 8-10 / 10-13 / 12-14

► FEATURES:

- Built with all the features of our closed toe binding in an open toe format.
- 3 removable, reversible low-profile Velcro straps for perfect fit, maximum customization.
- Strobel Lasted Liner.
- Superior Orthotic Footbed.
- LUX 2.5° Canted Chassis with Power Arch.



LINK
OPEN TOE SERIES



SIZES: 4-6 / 6-8 / 8-10 / 10-13 / 12-14

► FEATURES:

- Built with all the features of our closed toe binding in an open toe format.
- Open Toe Design for more fit, flexibility, maximum comfort, response and no heel/toe lift.
- Dual lace zones for pinpoint adjustment all over your foot.
- Strobel Lasted Liner.
- Superior Orthotic Footbed.
- LUX 2.5° Canted Chassis with Power Arch.
- Combination J-Bars for ultimate heel hold.



CONNECT
OPEN TOE SERIES



SIZES: 5-8 / 8-11 / 11-14

► FEATURES:

- Open Toe Design for more fit, flexibility.
- 3 Velcro straps for perfect fit and easy adjustment.
- Strobel Lasted Liner.
- 3D Orthotic Footbed.
- 2° Canted NEO Chassis
- Combination J-Bars for ultimate heel hold.
- Ultra lightweight



ACCESS
OPEN TOE SERIES



SIZES: 2-5 (Jr. Size) / 5-8 / 8-11 / 11-14

► FEATURES:

- Open Toe Design for more fit, flexibility.
- Dual lace zones for pinpoint adjustment all over your foot.
- Strobel Lasted Liner.
- 3D Orthotic Footbed.
- 2° Canted NEO Chassis
- Combination J-Bars for ultimate heel hold.
- Ultra lightweight



LACE KIT



- 20 Pack Counter Top Display
- Replacement laces in a wide variety of colors.
- Lace colors: Blue, Red, Yellow, Black, and White.

CLUTCH
OPEN TOE SERIES



SIZES : 2-5 (Jr. Size) / 5-8 / 8-11 / 11-14

► FEATURES:

- Open Toe Design for more fit flexibility.
- Free-Flex tongue opens wide for easy entry.
- Size Specific Construction.
- Strobel Lasted Liner.
- Comfort Footbed.
- 2° Canted Chassis
- Ultra lightweight
- 5-point adjustment



NOVA
OPEN TOE SERIES



SIZES : 2-5 (JR. SIZE) / 5-8 / 8-11

► FEATURES:

- Left and right specific plates offer a better fit for your foot.
- A lightweight chassis that fits most feet.
- Flexible plastisol overlay.
- Easy adjustable lace system.
- 2° Canted Chassis
- Ultra lightweight
- 5-point adjustment



NOVA

USA	7-12
UK	6.5-12.5
EUR	39-47
CM	25.1-29

JR. NOVA

USA	5-8
UK	4.5-7.5
EUR	37-41
CM	23.8-25.7

WAKE

SURFERS

CENSOR PRO SKIM SERIES

BEGINNER 1 • 2 • 3 • 4 • 5 • 6 • 7 • 8 • 9 • 10 EXPERIENCED

For your fast, high performance skim style needs, look no further than the O'Brien Censor. Coming in a 50", 55", and 60", there is a Censor designed to accommodate an array of surfers from little groms on up. Constructed from carbon fiber and epoxy, the Censor is ultra light, durable, snappy, and responsive. It utilizes a diamond shape template which improves stability and reduces the overall swing weight of the board, making high performance tricks easier than ever before. This shape paired with its ultrafast rocker line, provides effortless speed on the wave for launching larger airs as well as maintaining your glide through surface spins. All of this, along with our ergonomically designed traction pad, give you the ultimate control over your board and will have you slashing, spinning, and boosting all over the place!

	CENSOR 50"	CENSOR 55"	CENSOR 60"
LENGTH	127cm / 50"	139.7cm / 55"	152.4cm / 60"
WIDTH	50.4cm / 19.85"	52.3cm / 20.6"	53.34cm / 21"
VOLUME	10.81 Liters	13.13 Liters	14.6 Liters
WT. RANGE	150lbs max	120-220lbs	160-240lbs

CONSTRUCTION: Hand laid epoxy



(1) Spike 1.0 (2) Lambo 1.7

Hunter Sims

HUNTER SIMS
PRO MODEL



PRO RIDER: HUNTER SIMS

BEGINNER 1 • 2 • 3 • 4 • 5 • 6 • 7 • 8 • 9 • 10 EXPERIENCED

Built with a wood fore section and a carbon tail, the VR2 features a slightly narrower midsection and thinner profile, allowing the board sit a bit deeper in the water and be super responsive edge to edge. The carbon tail gives the board incredible snap off the back foot, while the wood front end provides added smoothness & flex to style out your ride as you are popping off the lip. With 5 fin inserts, the VR2 can be ridden in a Quad, Twin, or Thruster setup to suit your individual riding style.

new
VR2
SURF SERIES

VR2 56"

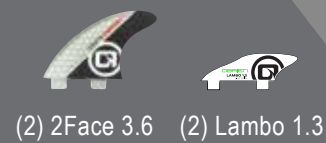
LENGTH	142.24cm / 56"
WIDTH	52.3cm / 20.6"
VOLUME	15.12 Liters
WT. RANGE	130-210lbs



CONSTRUCTION: Hand laid epoxy



new
FX1
SURF SERIES



CONSTRUCTION: Hand laid epoxy

	FX1 54"	FX1 59"
LENGTH	137.16cm / 54"	149.8cm / 59"
WIDTH	50.8cm / 20"	54cm / 21.25"
VOLUME	15.75 Liters	17.55 Liters
WT. RANGE	170lbs max	160-240lbs



BEGINNER 1 • 2 • 3 • 4 • 5 • 6 • 7 • 8 • 9 • 10 EXPERIENCED

With more width and volume throughout its template, the FX1 is a "do it all" air machine. With more volume in the rails the FX1 sits higher on the water and brings the surf feel behind the boat, allowing the board to roll on edge smoothly. The stepped tail and subtle concave base provide added quickness rail to rail while the squared off nose helps the board land reverse airs and shuvs. With 5 fin inserts, the VR2 can be ridden in a Quad, Twin, or Thruster setup to suit your individual riding style.

BEGINNER 1 • 2 • 3 • 4 • 5 • 6 • 7 • 8 • 9 • 10 EXPERIENCED

Featuring a wider midsection and a wide squash tail, the HZ2 develops an incredible amount of push and speed on any wave. Whether you are just getting into riding or are ripping airs, the stable platform will give you the confidence to take wherever you are to the next level. The Thruster fin setup gives the board great drive and the ability to air with ease. This board is a necessary addition to your quiver of boards!

new
HZ2
SURF SERIES

	HZ2 52"	HZ2 57"
LENGTH	132.08cm / 52"	144.78cm / 57"
WIDTH	50.8cm / 20"	54.6cm / 21.5"
VOLUME	16.12 Liters	17.15 Liters
WT. RANGE	170lbs max	140-220lbs



CONSTRUCTION: Hand laid epoxy



new
MICROWAVE
SKIM SERIES



CONSTRUCTION: Hand laid epoxy

	MICROWAVE 45"
LENGTH	114.3cm / 45"
WIDTH	47cm / 18.5"
VOLUME	8.37 Liters
WT. RANGE	120lbs max



BEGINNER 1 • 2 • 3 • 4 • 5 • 6 • 7 • 8 • 9 • 10 EXPERIENCED

Featuring a traditional skim style shape but with extra width in the tail, the Microwave generates push and speed with ease. Featuring 3 fin slots, more advanced riders can ride it with a single center fin for effortless spins, or as a tri-fin setup for more control. Our color-coded pad makes it easy for teaching – put your weight on the green front pad to go faster, shift your weight to the red rear pad to slow down. The skim-style Microwave is the ultimate grom board for any ripper!

BEGINNER 1 • 2 • 3 • 4 • 5 • 6 • 7 • 8 • 9 • 10 EXPERIENCED

A convex top deck compression molded to aggressive base channels in the tip and tail makes the Maha nimble and easy to control when riding regular or switch. It's classic Fish Tail design gets it's increased drive from a little extra tail width, making the board perfect for beginners and intermediate riders.

MAHA 60"
LENGTH 152cm / 60"
WIDTH 53.8cm / 21.2"
VOLUME 9.86 Liters
WT. RANGE 150-240lbs



CONSTRUCTION: Compression



MAHA SKIM SERIES



BEGINNER 1 • 2 • 3 • 4 • 5 • 6 • 7 • 8 • 9 • 10 EXPERIENCED

The Panama is a soft-top surfer designed to catch any wave with foam rails that won't ding the boat or break your wallet. The Panama offers an affordable board that everyone, regardless of skill level, can enjoy riding.

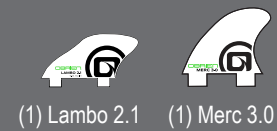
PANAMA 58"
LENGTH 147.3cm / 58"
WIDTH 54cm / 21.25"
WT. RANGE 220lbs max



new
PANAMA
SOFT TOP SERIES



TESANI SKIM SERIES



CONSTRUCTION: Hand laid epoxy

TESANI 64"
LENGTH 162cm / 64"
WIDTH 53.8cm / 21.2"
VOLUME 20.51 Liters
WT. RANGE 180-250lbs



BEGINNER 1 • 2 • 3 • 4 • 5 • 6 • 7 • 8 • 9 • 10 EXPERIENCED

A thin lightweight pintail with a convex top deck blends Skim style performance with our hand-shaped epoxy surf construction. Giving the Tesani agile ride characteristics, incredible buoyancy, maximum drive, and nearly symmetric tip and tail profiles to make it effortless riding switch or attempting 360's, Shove It's, etc...

NALU SKIM SERIES



CONSTRUCTION: Compression

NALU 56"
LENGTH 142cm / 56"
WIDTH 51.8cm / 20.4"
VOLUME 9.26 Liters
WT. RANGE 90-200lbs



BEGINNER 1 • 2 • 3 • 4 • 5 • 6 • 7 • 8 • 9 • 10 EXPERIENCED

The Nalu has a single fin and larger than normal flat spot to make catching both large and small waves effortless. Featuring a concave top deck for maximum comfort and control, the Nalu is perfect for cruising behind the boat or throwing skim tricks.

SUP

AND ACCESSORIES



Board	Length	Vol.	Beg.	Int.	Adv.
Passage	12'	230	256	301	393
Passage	11'	205	228	268	350
Eclipse	11'6"	202.6	225	265	346
Eclipse	11'	190.8	216	254	332
Eclipse	10'6"	179.2	202	238	311
Tokio	10'	200	222	261	342
Aurora	11'	198	220	260	375
Jr. Aurora	7'6"	79	80	100	250
Mist	10'6"	182.1	202	238	311
Vapor	11'6"	334	371	437	571
Vapor	10'6"	254.3	283	332	435
Zephyr	10'6"	245.9	273	321	420

SKILL FACTOR:

Beginners = 2
Intermediate = 1.7
Advanced = 1.3

CALCULATING BOARD VOLUME:

(Your Weight in lbs. X .45) x Skill Factor = Target Volume

Example: You are a beginner and you weigh 195 lbs.
(195 lbs. X .45) x2 (Skill Factor) = 175.5
Your board should have a minimum volume of 175.5 liters.

- The appropriate board size depends on weight, skill level, and volume of the board. The more you weigh, and the lower your skill level, the bigger the board you'll need.
- One liter of volume floats one kg weight.
- In order to factor in your skill level, multiply your Skill Lever Factor x Your Weight in kilograms to get your recommended volume in liters.
- 1 Lb. is approximately equal to .45 kg.
- When in doubt, lean to the next board size up.

PASSAGE EXPEDITION SERIES



BEGINNER 1 • 2 • 3 • 4 • 5 • 6 • 7 • 8 • 9 • 10 EXPERIENCED

Built for performance and stability in any condition, the Passage features a hybrid displacement hull that effortlessly planes on flat water. Its front keel displaces waves, chop and rollers allowing the board to cut through rough water as if nothing is there.

	new PASSAGE 11'	PASSAGE 12'
LENGTH	335.28cm / 132"	365.76cm / 144"
WIDTH	78.74cm / 31"	81.28cm / 32"
VOLUME	205 Liters	230 Liters

- FRONT & REAR BUNGEE SYSTEM
- TEXTURED EVA FOAM DECK PAD
- RECESSED CARRY HANDLE
- FRONT MEDIA MOUNT INSERT
- REAR LEASH PLUG



Breaker 9.0



10'6" 11' 11'6"

ECLIPSE EXPEDITION SERIES



- FRONT BUNGEE SYSTEM
- TEXTURED EVA FOAM DECK PAD
- RECESSED CARRY HANDLE
- FRONT MEDIA MOUNT INSERT
- REAR LEASH PLUG



9" SUP Fin

	ECLIPSE 10'6"	ECLIPSE 11'	ECLIPSE 11'6"
LENGTH	320.04cm / 126"	335.28cm / 132"	350.52 / 138"
WIDTH	78.74cm / 31"	80.01cm / 31.5"	80.01cm / 31.5"
VOLUME	182.1 Liters	194.3 Liters	202.6 Liters

BEGINNER 1 • 2 • 3 • 4 • 5 • 6 • 7 • 8 • 9 • 10 EXPERIENCED

Updated for 2017, the Eclipse now features higher volume D-shaped rails, allowing the board to ride higher on the water for less drag and more stability. The 10'6" option provides more maneuverability and easier storage, while the 11' Eclipse adds more length and volume for a more stable ride.

MIST
CRUISE SERIES

BEGINNER 1 • 2 • 3 • 4 • 5 • 6 • 7 • 8 • 9 • 10 EXPERIENCED

Updated for 2017, the Mist now features higher volume D-shaped rails, allowing the board to ride higher on the water for less drag and more stability. The Mist provides more maneuverability and easier storage.

MIST 10' 6"
LENGTH 320.04cm / 126"
WIDTH 78.74cm / 31.5"
VOLUME 182.1 Liters

- FRONT BUNGEE SYSTEM
- TEXTURED EVA FOAM DECK PAD
- RECESSED CARRY HANDLE
- FRONT MEDIA MOUNT INSERT
- REAR LEASH PLUG



TOKIO
EXPEDITION SERIES



- FRONT BUNGEE SYSTEM
- TEXTURED EVA FOAM DECK PAD
- RECESSED CARRY HANDLE
- FRONT MEDIA MOUNT INSERT
- REAR LEASH PLUG



TOKIO 10'
LENGTH 304.8cm / 120"
WIDTH 81.28cm / 32"
VOLUME 200 Liters

BEGINNER 1 • 2 • 3 • 4 • 5 • 6 • 7 • 8 • 9 • 10 EXPERIENCED

Shorter and wider than a typical SUP, the Tokio high-volume double concave hull brings a ton of stability and speed in a shorter package. At only 10' long, the Tokio is lighter, easier to maneuver and takes up a lot less room in the garage. The 32" width and 200 Liter volume makes it a stable platform for anything you want to do on the water.



new
AURORA 11'
SOFT-TOP SERIES

BEGINNER 1 • 2 • 3 • 4 • 5 • 6 • 7 • 8 • 9 • 10 EXPERIENCED

The Aurora provides a wide, stable platform and a soft top deck that is both comfortable and much more durable and resistant to dings than a traditional construction board. The slick base and refined bottom rails allow excellent performance in this range.

AURORA 11'
LENGTH 335.25cm / 132"
WIDTH 81.28cm / 31"
VOLUME 198 Liters

- FRONT BUNGEE SYSTEM
- RECESSED CARRY HANDLE
- REAR LEASH PLUG



new
AURORA 7'6"
SOFT-TOP SERIES

AURORA 7'6"
LENGTH 228.6cm / 90"
WIDTH 68cm / 26.77"
VOLUME 79 Liters

- RECESSED CARRY HANDLE
- REAR LEASH PLUG





VAPOR ISUP

INFLATABLE SERIES

The Vapor features a time-tested forward profile, capped off with a squared off tail and removable fin giving added stability and glide no matter what the conditions. The board rolls up easily and stores in our awesome ISUP Roller Case!

	VAPOR 10'6"	VAPOR 11'6"
LENGTH	320.04cm / 126"	350.52cm / 138"
WIDTH	76.2cm / 30"	76.2cm / 30"
DROP STITCH	12.7cm / 5"	15.24cm / 6"



9" SUP FIN



ZEPHYR ISUP

INFLATABLE SERIES

	ZEPHYR 10'6"
LENGTH	320.04cm / 126"
WIDTH	76.2cm / 30"
DROP STITCH	12.7cm / 5"



9" SUP FIN

Touring the back country has never been easier! Whether you are short on storage space, are packing deep into the woods, or just want the added durability of an inflatable, the Zephyr is for you. Featuring an aggressive profile and wide tail, the Zephyr cuts through the water with ease. Comes with the same fin configuration as the Vapor for no worries performance!



new LOTUS ISUP

INFLATABLE SERIES

The Lotus features extra volume in the tail and removable fin giving added stability and glide no matter what the conditions. ISUP Roller Case and dual-action ISUP pump included.

	LOTUS 10'6"
LENGTH	320.04cm / 126"
WIDTH	76.2cm / 30"
DROP STITCH	12.7cm / 5"



9" SUP FIN



O'Brien's ISUP fin system is strong, durable and reliable. The precision fin placement is critical for a stable, smooth ride, while the tough PVC fin will hold up whether you stand on the board while on land or run over rocks in shallow water.



*VAPOR, LOTUS and ZEPHYR include Roller Case, and our Dual-Action Pump!

SUP

ACCESSORIES



SUP CASE

Protect your SUP in this heavy duty case. Available in two sizes. 11' and 12'



new

4 PC. 7" PLASTIC ALUMINUM HANDLE



7" PLASTIC ALUMINUM HANDLE AVAILABLE IN 2PC. OR 3PC.



7" BAMBOO CARBON HANDLE AVAILABLE IN 2PC. OR 3PC.

8" BAMBOO CARBON HANDLE AVAILABLE IN 2PC. OR 3PC.

8" BAMBOO ALUMINUM HANDLE AVAILABLE IN 2PC. OR 3PC.



new

7" JR PADDLE ALUMINUM HANDLE



ARSENAL SUP VEST

- X-Small/Small (28" to 36" Chest)
- Medium/Large (36" to 44" Chest)
- X-Large/XX-Large (44" to 56" Chest)



SUP VEST

- Available in blue or green
- Small/Medium (32"-40" Chest)
- Large/X-Large (40"-48" Chest)
- 2X-Large/3X-Large (48"-52" Chest)



SUP INFLATABLE BELT PAC

- Universal (30"-52" Chest)



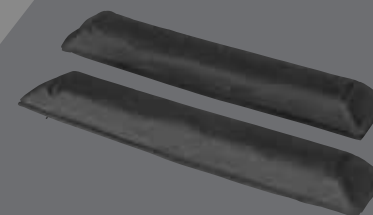
M16 INFLATABLE BELT

- Universal (30"-52" Chest)



10' SUP LEASH

- Available in Green or Black
- 10' Ankle Leash
- 8mm PU cord
- Double Swivel
- Neoprene strap
- Quick Release



SUP PAD SYSTEM

This two-pack of durable, polyester-wrapped foam pads easily secure to your roof rack's 5.5 to 8in circumference aero crossbars with their easy-to-use hook-and-loop closure tabs.



SUP TIE DOWNS

12' long, perfect for securing your sups to your vehicle.



ISUP DUAL-ACTION HAND PUMP

Inflate your board faster and easier with continuous pumping cycles both in down and upward action. Inflates up to 18 psi.

ISUP SINGLE-ACTION HAND PUMP

Inflates up to 18 psi.



ISUP ELECTRIC PUMP

- Select the PSI you need for inflation. The pump will stop automatically when the SUP is fully inflated to your setting
- Inflate large and small inflatable varied from 1 to 20 psi
- Alligator clips included for connecting to battery



ISUP ROLLER CASE

Transport your ISUP protected in this heavy duty Roller bag. Full length zipper makes for easy entry and inside straps hold that ISUP and paddle right where you want it. Large pocket to hold your pump.



KANULOCK SUP TIE DOWNS

- Easy to lock buckles
- Cannot be cut by knife
- Less wind noise
- Easy to lock buckles secure your SUP to the rack on your vehicle
- 11' long

SLALOM SKIS



PRO RIDER: GLENN CAMPBELL

TRADITIONAL

WEIGHT LBS. (KG)	26-30 MPH (42-48km)	30-34 MPH (48-55km)	34-36 MPH (55-58km)
UNDER 100 (<45)	59" (150)	59" (150)	59" (150)
100-110 (45-50)	61"-64" (155-163)	61"-64" (155-163)	61"-64" (155-163)
105-120 (47-54)	61"-66" (155-168)	61"-64" (155-163)	61"-64" (155-163)
115-140 (52-63)	61"-66" (155-168)	61"-64" (155-163)	63"-66" (160-168)
136-160 (62-73)	64"-68" (163-173)	63"-66" (160-168)	64"-66" (155-168)
155-180 (70-82)	66"-69" (168-175)	66"-69" (168-175)	66"-68" (168-173)
175-200 (79-91)	68"-69" (173-175)	68"-69" (173-175)	68"-69" (173-175)
200+ (91+)	69" (175+)	68"-69" (173-175)	68"-69" (173-175)

SHAPED

UNDER 180 (<82)	65"-66" (165-168)
180-210 (82-95)	67"-68" (170-175)
OVER 210 (95+)	68"-69" (173-175)

(O'Brien Synchro and Sequence are shaped skis)



G5

PRO SERIES

SIZE: 66" / 67" / 68"



Insight
w/ Pro Wing

SUGGESTED
BINDINGS



Legion



Division



Titan

BEGINNER 1 • 2 • 3 • 4 • 5 • 6 • 7 • 8 • 9 • 10 EXPERIENCED

The G5 offers competition skiers the perfect speed for the absolute top performance. Seamless transitions lead to smooth, flowing arcs, creating effortless angle and more course space than has ever been achieved in a tournament level slalom. An innovative new sidecut and perfectly matched rocker combine to form a huge and extremely forgiving "sweet spot". The G5's unique bottom design blends an aggressive concave for grip with subtle forebody rails, providing committed initiation while maintaining predictability. The design is so incredibly well-balanced that there is less critical impact on binding placement and fin adjustment.

FLEX
FIN
BINDINGS
ROCKER
TUNNEL
BEVELS

Pro
Insight w/ Pro Wing
Legion, Division, Titan
More rocker for smooth, forgiving turns
Concave, carry more speed into turns
48 Degree Bevels



Skiers Weight: 66" 125-175 / 67" 160-190 / 68" 180+



CONQUER

PRO SERIES

SIZE: 64.5" / 66" / 67.5"



Insight
w/ Pro Wing

SUGGESTED
BINDINGS



Legion



Division



Titan

BEGINNER 1 • 2 • 3 • 4 • 5 • 6 • 7 • 8 • 9 • 10 EXPERIENCED

The Conquer has a unique fore-body design with greater width for an aggressive but controlled, no-compromise finish to the turn. The Conquer features a flex pattern for skiers who place a premium on stability and cross-course angle. Our liveliest Conquer yet, the balanced, nimble feel engages the skier, delivering extreme cross-course angle and helping to set up for a controlled and outward cast in the pre-turn. Balanced, aggressive turns provide the skier with the opportunity for a secure and locked-in cut.

FLEX
FIN
BINDINGS
ROCKER
TUNNEL
BEVELS

Pro
Insight w/ Pro Wing
Legion, Division, Titan
More rocker for smooth, forgiving turns
Concave, carry more speed into turns
48 Degree Bevels



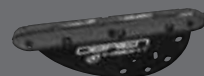
Skiers Weight: 64.5" 125-175 / 66" 160-190 / 67.5" 180+



G4

PRO SERIES

SIZE: 66" / 67" / 68"



Insight
w/ Pro Wing

SUGGESTED
BINDINGS



Legion



Division



Titan

BEGINNER 1 • 2 • 3 • 4 • 5 • 6 • 7 • 8 • 9 • 10 EXPERIENCED

The G4 offers the explosive angle, and marveled outside cast followed by dynamic finishes of the turn, all with a moderated feel.

FLEX Pro
FIN Insight w/ Pro Wing
BINDINGS Legion, Division, Titan
ROCKER More rocker for smooth, forgiving turns
TUNNEL Concave, carry more speed into turns
BEVELS 48 Degree Bevels

Skiers Weight: 66" 125-175 / 67" 160-190 / 68" 180+



PREVAIL

PRO SERIES

SIZE: 64.5" / 66" / 67.5"



Insight
w/ Pro Wing

SUGGESTED
BINDINGS



Legion



Division



Titan

BEGINNER 1 • 2 • 3 • 4 • 5 • 6 • 7 • 8 • 9 • 10 EXPERIENCED

The Prevail provides the skier the confident power and stability with the regulating characteristics and versatility availed by the polyurethane core.

FLEX Pro
FIN Insight w/ Pro Wing
BINDINGS Legion, Division, Titan
ROCKER More rocker for smooth, forgiving turns
TUNNEL Concave, carry more speed into turns
BEVELS 48 Degree Bevels

Skiers Weight: 64.5" 125-175 / 66" 160-190 / 67.5" 180+



SYNCHRO

PRO SERIES

SIZE: 63" / 66" / 69"

SUGGESTED
BINDINGS



Division



Titan

BEGINNER 1 • 2 • 3 • 4 • 5 • 6 • 7 • 8 • 9 • 10 EXPERIENCED

The Synchro's wide body is designed to let you ski the course or take on open waters in equal style. If you want to slow down and work on technique this is the tool to use. The Synchro is designed to ski 30 to 34 MPH. Easier to get up on, turns on a dime, and maybe you can back off the speed a couple of MPH.

FLEX Pro
FIN Carve
BINDINGS Division, Titan
ROCKER More rocker for smooth, forgiving turns
TUNNEL Concave, carry more speed into turns
BEVELS 48 Degree Bevels



SIEGE

PRO SERIES

SIZE: 64.5" / 66" / 67.5" / 69"



64.5"

66"

67.5"

69"

BEGINNER 1 • 2 • 3 • 4 • 5 • 6 • 7 • 8 • 9 • 10 EXPERIENCED

Mirroring the same shape as the legendary Sixam 2.0, the Siege is incredibly responsive! With a tunnel concave, edge changes are effortless and the ski turns on a dime. A softer flex and increased rocker make this ski feel stable right out of the box.

FLEX Pro
FIN Carve
BINDINGS Division, Titan, Avid
ROCKER Smooth transitions from edge to edge
TUNNEL Quick, easy edge changes
BEVELS Small, defined bevel for easier turning
RIDER ABILITY Beginner to Pro

JR. SIEGE

PERFORMANCE SERIES

SIZE: 59" / 62" / 63.5"



BEGINNER 1 • 2 • 3 • 4 • 5 • 6 • 7 • 8 • 9 • 10 EXPERIENCED

Perfect for kids who are learning to ski, the Jr. Siege is also ideal for little rippers who are already tearing up the course!

FLEX Performance
FIN Carve
BINDINGS Titan, X9 (59" and 62" Jr. X-9 ONLY)
ROCKER More rocker for smooth, forgiving turns
TUNNEL Quick, easy edge changes
BEVELS Small, defined bevel for easier turning
RIDER ABILITY Beginner to Pro

SEQUENCE

SPORT SERIES

SIZE: 67" / 69"



BEGINNER 1 • 2 • 3 • 4 • 5 • 6 • 7 • 8 • 9 • 10 EXPERIENCED

This wide-bodied ski makes light work of deep water starts. With a transitional tunnel-to-full concave bottom design, it is stable yet exceptionally responsive to quick turns and strong pulls. The Sequence is a ski that anyone can get up on that also makes short work of the slalom course!

FLEX Sport
FIN Carve
BINDINGS X-9
ROCKER Heavy
TUNNEL Transitional Concave
BEVELS Large, Sharp
RIDER ABILITY Beginner to Intermediate

IMPULSE

SPORT SERIES
SIZE: 64" / 66"



Give in to your Impulse on a ski that can keep up. The Impulse features a stable shape with a softer flex for the ladies! This ski turns on a dime and is extremely forgiving.

FLEX	Sport
FIN	Carve
BINDINGS	X-9
ROCKER	Heavy
TUNNEL	Narrow
BEVELS	45 Degree Bevel
RIDER ABILITY	Beginner to Intermediate

WORLD TEAM

SPORT SERIES
SIZE: 64" / 66" / 68"



The number one selling ski in the world and still one of the best skis ever for the skier that just wants to have fun. A wide fore-body and deep tunnel make the World Team a great ski to learn and progress.

FLEX	Sport
FIN	Carve
BINDINGS	X-9
ROCKER	Heavy
TUNNEL	Narrow
BEVELS	45 Degree Bevel
RIDER ABILITY	Beginner to Intermediate

PRO TOUR

SPORT SERIES
SIZE: 68" 64" 58"



BEGINNER 1 • 2 • 3 • 4 • 5 • 6 • 7 • 8 • 9 • 10 EXPERIENCED

The Pro Tour is designed to be super stable and easy to get out of the water. With unmatched ease and control, the Pro Tour should be every skier's first slalom ski.

FLEX	Sport
FIN	Carve
BINDINGS	Avid (Jr Avid on 58")
ROCKER	Heavy
TUNNEL	Narrow
BEVELS	45 Degree Bevel
RIDER ABILITY	Beginner to Intermediate

PRO TRAC

TRICK SERIES
SIZE: 42"



BEGINNER 1 • 2 • 3 • 4 • 5 • 6 • 7 • 8 • 9 • 10 EXPERIENCED

The most popular recreational trick skis ever made!

TAPERED BEVELS - Creates lift for easy starts
FULL LENGTH GROOVES – Increases stability
SYMMETRICAL ROCKER – Helps prevent falls

LENGTH	42" / 106.68cm
BEVEL	Tapered
BINDING	X-9 / X-7
FOOT SIZE	MENS 7-13

SLALOM

BINDINGS



PRO RIDER: DREW ROSS
PHOTO COURTESY OF NAUTIQUE

BINDING TECH



LASTED CONSTRUCTION
Shaped to the contours of a foot to make a left and right specific binding.



DUAL STRETCH ZONE
2 release zones allow the heel of the skier to lift past the ankle "pressure" zone, yet still providing extreme comfort, support and performance.



14 DEGREES OF ROTATION
Allows for small or large adjustment of the boot canting position. This allows the user to dial in the ski's characteristics with a whole new level of precision!

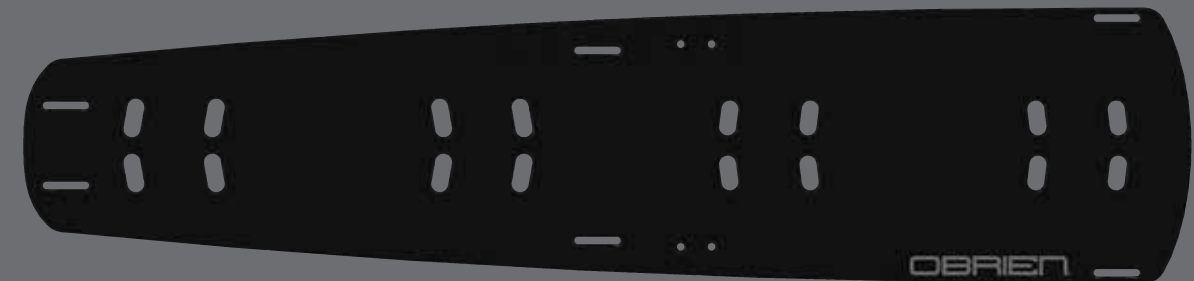


LOW PRO CHASSIS
In any type of dynamic motion, a low center of gravity is always the most important factor. A low CG means control in the turn, leverage in the pull, a faster reaction time, and highly sensitive feedback.

BINDING SIZING

LEGION BINDING PLATE

Constructed of the highest quality G10 composite, the Legion plate provides excellent torsional rigidity while allowing the front and rear boots to flex more naturally with the ski.



USA	5-6	5-7	7-8	7-10	9-10	10-12	11-12	12-14	13-14	XS/S	MD/LG	XL/XXL
UK	4.5-5	4.5-6	6-7	6-9	8-9	9-11	10-11	11-13	12-13	4-6.5	6.5-11.5	11-13.5
EUR	37-39	37-40	40-41	40-43	42-43	43-45	44-45	45-47	46-47	36-39	39-46	45-48.5
CM	23.1-23.5	23.1-24.4	24.4-25.4	24.4-27	26-27	27-28.6	27.9-28.6	28.6-30.2	29.4-30.2	23.1-25.4	24.4-27.9	27.9-31.8

*Please note: Closed toe bindings fit by width, thickness and length. Open toe bindings fit by foot width and thickness, but not length. Therefore this chart should only be used as a general guide. We recommend that you try on before purchasing. Bindings will soften for a looser fit with use.



LEGION

SIZES: 5-6 / 7-8 / 9-10 / 11-12 / 13-14

The Legion is O'Brien's top-of-the-line high-performance slalom binding built for maximum comfort without sacrificing any performance. An advanced construction method eliminates pressure points along the side of the foot. This construction method also allows the upper to totally wrap the foot for the best possible fit. The Legion is a directional design, meaning there is a left and right specific boot. The plate is made of new G-10 material that flexes with the ski and is very low profile. The Legion mounting system allows the boot to be adjusted on the plate without removing it from the ski. The removable liner is heat moldable for a custom fit.



LEGION RTP

SIZES: 5-7 / 7-10 / 10-12 / 12-14

Adding versatility to the Legion binding line, the Legion RTP offers classic toe loop performance with all the comforts of today. The soft lycra liner is extremely comfortable and fits like a glove. The semi-rigid side panels provide lateral support while the Velcro closures customize the fit to perfection.

**Must be used with the Legion RTP plate.*



new DIVISION

SIZES: 5-7 / 7-10 / 10-12 / 12-14

Built on an aluminum plate, the Division features a front lace system for ease of entry and exit. The low-profile design gets your center gravity as close as possible to the water for maximum performance. Built-in lateral stiffeners and the last-style footwear construction make this one of the best fitting boots on the market. Dual stretch zones make it extremely comfortable while providing for easy release. The open toe design makes it a more forgiving shoe size, so it's easier to share between similar-sized friends and family. 14° of rotation lets you tweak the binding settings to your heart's content.



new DIVISION RTP

SIZES: 5-7 / 7-10 / 10-12 / 12-14

The Division RTP offers built-in lateral stiffeners and lasted-style footwear construction.



new TITAN

SIZES: XS-SM 4-7 / MD-LG 8-12 / XL-XXL 10-14

Using the same chassis as the Division Binding, the Titan comes in a wide range of specific sizes at a lower price point. The Plastic (Nylon 6) plate is both lightweight and durable, and the integrated liner/heel makes it a snap to get on and off.



new AVID

SIZES: Junior, XS/S, STD, XXL

The O'Brien Avid is the binding for "the rest of us". If you need a binding that your whole family can share, but you still want stellar performance, look no further. The Avid features a lightweight chassis/plate combination to get your foot as close to the ski as possible. The lower cut to the binding makes for an easier release and gives great flexibility. The front lace system makes this very easy to get into, and a cinch to snug up. An EVA footbed makes it comfy and secure. And a wide range of size adjustment makes this the perfect binding for family use. The Avid binding, while adjustable, is available in three sizes. XS (up to size 7), Standard (men's sizes 7-11), and XXL (men's sizes 12+). Best of all, this binding is value priced so you can experience awesome performance without breaking the bank.



X-9 RTP

SIZES: XS 4-7 / STD 7-11
Junior Size: 2-7 (Jr. Ski hole pattern only)



COMBO

SKIS



PERFORMER PRO

PERFORMANCE SERIES



BEGINNER 1 • 2 • 3 • 4 • 5 • 6 • 7 • 8 • 9 • 10 EXPERIENCED

Got slalom skiers and combo skiers in the same family? Then the Performer Pro is for you! Built to be easy to get up on like our other combos, but with features usually found only on higher performance slalom skis, the Performer Pro is the best of both worlds. With an Aluminum A.R.C. Fin, and fully-padded slalom caliber X-9 bindings, this is the pair that bridges the gap between slaloms and combos.

LENGTH 68" / 172cm
FIN Aluminum A.R.C
BINDINGS Avid Bindings
FOOT SIZE MENS 7 - 13

PERFORMER

PERFORMANCE SERIES



BEGINNER 1 • 2 • 3 • 4 • 5 • 6 • 7 • 8 • 9 • 10 EXPERIENCED

The lace-adjustable X-8 bindings securely hold almost any size foot in padded comfort without sacrificing performance. Extra surface area provided by the wide forebody makes for exceptionally easy deep water starts. The Performer has an aggressive rocker and performance bevels making it a great entry-level slalom ski as well as a fantastic combo pair.

LENGTH 68" / 172cm
FIN PLASTIC
BINDINGS X-8 Bindings
FOOT SIZE MENS 7 - 13

CELEBRITY

PERFORMANCE SERIES



BEGINNER 1 • 2 • 3 • 4 • 5 • 6 • 7 • 8 • 9 • 10 EXPERIENCED

O'Brien's best-selling pair, the Celebrity Combos will have almost anyone from beginners to experts feeling at home on the water. With the easy adjustability and great fit of the new X7 bindings, you'll be skiing in no time. A performance slalom side-cut bevel blended with a dual tunnel makes this our most versatile combo pair. Lots of surface area provides plenty of lift for exceptionally easy deep-water starts. When in doubt, the Celebrity Combos are the answer.

LENGTH 68" / 172cm • Available in Red or Blue
 FIN PLASTIC
 BINDINGS X7 Adj. Bindings
 FOOT SIZE MENS 4.5 - 13

The X7 isn't just a new binding, it's the best combo binding on the market. Over 3 years in the making, we've devised a unique construction process that has allowed us to achieve better fit, more comfort and increased performance than any previous binding in its class!

CELEBRITY 64

PERFORMANCE SERIES



BEGINNER 1 • 2 • 3 • 4 • 5 • 6 • 7 • 8 • 9 • 10 EXPERIENCED

Just 4 inches shorter and slightly narrower than the regular Celebrities, the Celebrity 64 is the perfect pair for lighter skiers who want more maneuverability without giving up the ease-of-use the Celebrities are famous for. A flatter, faster rocker line reduces drag, allowing for hours of skiing with less fatigue. If most of your skiers are under 165 pounds, the Celebrity 64 Combos may be your best choice.

LENGTH 64" / 162cm
 FIN PLASTIC
 BINDINGS Jr. X7 Adj. Bindings
 FOOT SIZE Jr. 2-7



JR. CELEBRITY

PERFORMANCE SERIES



BEGINNER 1 • 2 • 3 • 4 • 5 • 6 • 7 • 8 • 9 • 10 EXPERIENCED

A scaled down version of the adult Celebrity Combos, the 58" Jr. Celebrity is the perfect size for the pre-teen to early teenage skier, as well as lighter adults up to about 130 pounds. A shorter, lighter pair means better maneuverability for more fun on the water. The Jr. Celebrity includes a stabilizer bar to make deep-water starts much easier for newbies. Then, the bar can be easily removed to allow the skis to really carve! Includes a Junior sized version of the X7 bindings to fit smaller shoe sizes.

LENGTH 58" / 147cm
 FIN PLASTIC
 BINDINGS Jr. X7 Adj. Bindings
 FOOT SIZE KIDS 2 - MENS 7
 WEIGHT RANGE UP TO 120lbs.

REACTOR

PERFORMANCE SERIES



BEGINNER 1 • 2 • 3 • 4 • 5 • 6 • 7 • 8 • 9 • 10 EXPERIENCED

The Reactor is a classic! When you think of waterskis, these are probably what pops into your head. Our most "traditional" pair of skis, they have a bit narrower profile than our other pairs, making them a little more maneuverable. But they are still surprisingly easy to get up on, with tunnel channels for stability and performance. These are also our most value-oriented skis. You can't go wrong with the Reactors!

LENGTH 67" / 170cm
 FIN PLASTIC
 BINDINGS 700 Adj.
 FOOT SIZE MENS 4.5 - 13

VORTEX

WIDE-BODY SERIES



BEGINNER 1 • 2 • 3 • 4 • 5 • 6 • 7 • 8 • 9 • 10 EXPERIENCED

The Vortex is our "Big-Daddy" wide-body pair, designed for super-easy deep-water starts and big, carving turns. The extra surface area reduces drag and provides a huge amount of "lift" to get larger skiers up on plane. The large surface area also allows for skiing at a slower boat speed with less effort. If in doubt about getting up on a pair of skis, go with the Vortex Combos. They're as close to a sure bet as you'll find.

• Available in Red or Blue

LENGTH 65.5" / 166cm
FIN PLASTIC
BINDINGS X7 Adj. Bindings
FOOT SIZE MENS 4.5 - 13

JR. VORTEX

WIDE-BODY SERIES



BEGINNER 1 • 2 • 3 • 4 • 5 • 6 • 7 • 8 • 9 • 10 EXPERIENCED

A smaller version of the adult Vortex Combos, the 54" Jr. Vortex offers the extra surface area of the Vortex in a smaller, more maneuverable size for younger and lighter skiers. The Jr. Vortex includes a stabilizer bar to make deep-water starts super easy. Then, the bar can be removed to allow the skis to really carve! Includes a Junior sized version of the X7 bindings to fit smaller shoe sizes.

LENGTH 54" / 137cm
FIN PLASTIC
BINDINGS Jr. X7 Adj. Bindings
FOOT SIZE KIDS 2 - MENS 7
WEIGHT RANGE UP TO 140lbs.

ALL STAR

TRAINER SERIES

- LENGTH - 46"
- STABILIZER BAR
- TRAINER ROPE W/ HANDLE
- WEIGHT RANGE UP TO 85 lbs.
- DUAL TUNNEL
- MOLDED-IN FINS



WAKE STAR

TRAINER SERIES

- LENGTH - 46"
- WIDE BODY
- STABILIZER BAR
- TRAINER ROPE W/ HANDLE
- WEIGHT RANGE UP TO 85 lbs.
- BAMBOO CONSTRUCTION



PLATFORM TRAINER

TRAINER SERIES

- LENGTH - 46"
- TRAINER ROPE W/ HANDLE
- WEIGHT RANGE UP TO 85 lbs.
- BAMBOO CONSTRUCTION



SIMPLE TRAINER

TRAINER SERIES

- INFLATABLE COMBO TRAINER
- TRAINER ROPE W/ HANDLE
- WEIGHT RANGE UP TO 85 lbs.



Make skiing a family affair! The Simple Trainer will get your child involved in the sport you already love. It's soft and cushy and just plain friendly-looking. Additionally, the inflated seat on the back gives your child a great perch when the trainers aren't moving. The comfortable stirrups are on an inflated floor that absorbs the bumps. It comes complete with two ropes, one for the child and a tow rope for an adult to hold from the boat. This trainer will plane off with almost any movement at all (even running speeds on the beach) and the max speed is a very rider-friendly 8 mph. Best of all, when you're done using it, just let the air out and put it away. The Simple Trainer offers almost guaranteed success.

KNEEBOARDS



61 PRO RIDER: JOHN HAILE

SOZO PRO SERIES



The SoZo is ridden by nearly ALL the top kneeboarders in the world! The clean, efficient shape initiates turns easily, edges up the wake with a clean release, and is very forgiving. O'Brien's Fusion Core (wood stringers within a foam core), is CNC machined to exacting specifications, giving the board a liveliness and lightness like no other. Sandwich Construction makes for the optimum flex pattern, storing energy and releasing it perfectly at the wake. The SoZo is explosive, lightweight and unbelievably maneuverable. The SoZo pad is state-of-the-art, too. It is extremely supportive, fully customizable, and softens landings like no pad ever seen.

Ted Bevelacqua

TED BEVELACQUA
PRO MODEL

new ENFORCER PARK SERIES

LENGTH:	51.8"
WIDTH:	21.6"
STRAP:	3" Cinch
TIP ROCKER:	3.4"
TAIL ROCKER:	1.8"
BELLY:	0.5"



You asked, we listened! Built off our wildly successful Sozo, the Enforcer shares many of its qualities but has been configured as a no-compromise all-terrain beast. Featuring our signature Impact Base, Dura-rail sandwich construction, and snappy fusion core - the Enforcer can take anything you can throw at it and come back for more. The more parallel edge profile and squared off tip and tail are dialed in for pressing rails, hitting kickers, and overall incredible performance on the water. The snappy, flexible deck softens landings, helps initiate turns, and lets the tips flex - giving you maximum pressability on the rails. The Enforcer is set to dominate for 2018!

LENGTH:	51.8"
WIDTH:	20"
STRAP:	3" Cinch
TIP ROCKER:	3.4"
TAIL ROCKER:	1.8"
BELLY:	0.5"



ION
FLEX SERIES



Inspired by the industry leading technology of the SoZo, the Ion is constructed using the same "sandwich" technology for light weight, a nearly perfect flex pattern, and spectacular control. The Ion was specifically designed to work equally well behind the boat AND on cable, with a bit more flex than the SoZo to absorb impacts and make turns nearly automatic. The continuous rocker line gives great control on obstacles, sliders and kickers. The Ion is very, fast yet supremely maneuverable, and landings are incredibly forgiving due to the clean shape, continuous rocker, and softer flex pattern. The Ion is unquestionably a top performer in kneeboarding.

- LENGTH: 51.4"
- WIDTH: 21.9"
- STRAP: 3" Padded
- TIP ROCKER: 3.4"
- TAIL ROCKER: 1.8"
- BELLY: 0.54"



RUSH 5150
FEATHERCORE SERIES



With the possible exception of its new big brother the SoZo, the O'Brien Rush 5150 has simply been the most dominant kneeboard ever designed. The extreme rocker line and hand-shaped variable bevels provide smooth edge-to-edge transitions. The very efficient wet surface produces a HUGE amount of lift. The Rush 5150 is outstanding for larger riders due to its stiffness and large surface area. The 5150's pad has ultra deep kneewells and dual density EVA foam construction for extreme comfort and control. Equally at ease riding forwards or back, the versatile Rush 5150 will take your riding to new levels!

- ▶ 2:1 ratio fully padded Cinch Strap for ultimate hold.
- ▶ Aggressive Rocker line.
- ▶ Hand turned bevels.
- ▶ Deep shock absorbing knee wells.



RICOCHET
FEATHERCORE SERIES



The Ricochet is the perfect transition board for anyone stepping up from a plastic, rotationally-molded kneeboard. Built with the same quality materials as our flagship boards, the Ricochet brings pro-level performance at a value price. Twin tip and a V-Hull design make for high-performance, but with easy riding comfort, too. Compression molded construction coupled with a molded flex pad and a 3" padded strap mean acceleration and a secure fit. Comes with a molded-in hook to make training a breeze. The perfect entre to high-performance kneeboarding.

- ▶ Integrated hook
- ▶ Padded Adjustable Strap



BLACK MAGIC
ROTO SERIES



Aquatic Hook



Retractable Fins



Probably the best "family" kneeboard on the market, the Black Magic does it all. The famous cable-actuated retractable fin system and the aquatic hook make the Black Magic the perfect board for successfully teaching kids and newbie riders the finer points of deep-water kneeboard starts. The size of the Black Magic means adults and kids can ride it with ease. The smooth bottom contour makes it super stable and extremely comfortable. The 3-inch padded strap provides a secure fit.

- ▶ Retractable fins.
- ▶ Aquatic hook.
- ▶ Padded, adjustable strap.
- ▶ Durable plastic base.

VOODOO
ROTO SERIES



Aquatic Hook



The VooDoo combines hard-charging runs at the wake with a forgiving ride. Quad molded fins at each corner provide extra tracking, and the curved underside makes for quick and smooth edge transitions. The 3/4" thick pad provides plush comfort for your knees and ankles, while the 3-inch padded strap secures you for maximum control.

- ▶ Padded adjustable strap.
- ▶ Integrated hook.
- ▶ 3/4" EVA pad.
- ▶ Variable beveled edge.
- ▶ Quad molded fins.



RADICA
ROTO SERIES



Aquatic Hook



We've blended wakeboard and water-ski design elements into the Radica to bring levels of performance previously unheard of at this price. Wakeboard-styled quad, cupped molded fins make edging and carving a breeze, while allowing release for spin-type tricks. The water-ski influenced edge bevel helps the board sit low in the water for stability and allows quick edge to edge transitions. The Radica is our most value-oriented kneeboard, but its performance is sure to amaze even the hard-core kneeboarder.

- ▶ Padded adjustable strap.
- ▶ Integrated hook.
- ▶ 3/4" EVA pad.
- ▶ Variable beveled edge.
- ▶ Quad molded fins.



SofTec
APEX 2
 DECK SERIES

new

SIZE: 65" x 71"

- MAX. RIDERS: UP TO 2 RIDERS OR 340 lbs.
- BLADDER: 26/24 GAUGE
- COVER: FULLY COVERED 840D NYLON
- HANDLES: 16 SOFT WEBBING HANDLES
- TOP DECK: SOFTEC
- TOW HOOK: QUICK CONNECT TOW HOOK
- VALVES: 1 LIGHTNING VALVE, 3 ECO VALVES

ONE YEAR LIMITED WARRANTY
 USE TENSILE STRENGTH TOW ROPE OF 2375 lbs.



SofTec
SQUEEZE 2
 WEDGE SERIES

new

SIZE: 73" x 51"

- MAX. RIDERS: UP TO 2 RIDERS OR 340 lbs.
- BLADDER: 26/24 GAUGE
- COVER: FULLY COVERED 840D NYLON
- HANDLES: 4 SOFT WEBBING HANDLES
- TOP DECK: SOFTEC
- TOW HOOK: QUICK CONNECT TOW HOOK
- VALVES: 1 LIGHTNING VALVE

ONE YEAR LIMITED WARRANTY
 USE TENSILE STRENGTH TOW ROPE OF 2375 lbs.



SofTec
APEX 3
 DECK SERIES

new

SIZE: 65" x 86"

- MAX. RIDERS: UP TO 3 RIDERS OR 510 lbs.
- BLADDER: 28/24 GAUGE
- COVER: FULLY COVERED 840D NYLON
- HANDLES: 24 SOFT WEBBING HANDLES
- TOP DECK: SOFTEC
- TOW HOOK: QUICK CONNECT TOW HOOK
- VALVES: 1 LIGHTNING VALVE, 4 ECO VALVES

ONE YEAR LIMITED WARRANTY
 USE TENSILE STRENGTH TOW ROPE OF 3350 lbs.



SofTec
SQUEEZE 3
 WEDGE SERIES

new

SIZE: 73" x 61"

- MAX. RIDERS: UP TO 3 RIDERS OR 510 lbs.
- BLADDER: 28/24 GAUGE
- COVER: FULLY COVERED 840D NYLON
- HANDLES: 6 SOFT WEBBING HANDLES
- TOP DECK: SOFTEC
- TOW HOOK: QUICK CONNECT TOW HOOK
- VALVES: 1 LIGHTNING VALVE

ONE YEAR LIMITED WARRANTY
 USE TENSILE STRENGTH TOW ROPE OF 3350 lbs.



SofTea
BALLER 2
 KICKBACK SERIES

new

SIZE: 66" x 66"

- MAX. RIDERS: UP TO 2 RIDERS OR 340 lbs.
- BLADDER: 28/24 GAUGE
- COVER: FULLY COVERED 840/420 D NYLON
- HANDLES: 12 SOFT WEBBING HANDLES
- TOP DECK: SOFTEC
- TOW HOOK: 2 QUICK CONNECT TOW HOOKS
- VALVES: 2 LIGHTNING VALVES



PULLS BOTH WAYS!



ONE YEAR LIMITED WARRANTY
 USE TENSILE STRENGTH TOW ROPE OF 2375 lbs.



SofTea
BALLER 4
 KICKBACK SERIES

new

SIZE: 75" x 93"

- MAX. RIDERS: UP TO 4 RIDERS OR 680 lbs.
- BLADDER: 30/26 GAUGE
- COVER: FULLY COVERED 840 D NYLON
- HANDLES: 18 SOFT WEBBING HANDLES
- TOP DECK: SOFTEC
- TOW HOOK: 2 QUICK CONNECT TOW HOOKS
- VALVES: 2 LIGHTNING VALVES



PULLS BOTH WAYS!



ONE YEAR LIMITED WARRANTY
 USE TENSILE STRENGTH TOW ROPE OF 4100 lbs.



SofTea
BALLER 3
 KICKBACK SERIES

new

SIZE: 70" x 78"

- MAX. RIDERS: UP TO 3 RIDERS OR 510 lbs.
- BLADDER: 30/24 GAUGE
- COVER: FULLY COVERED 840/420 D NYLON
- HANDLES: 14 SOFT WEBBING HANDLES
- TOP DECK: SOFTEC
- TOW HOOK: 2 QUICK CONNECT TOW HOOKS
- VALVES: 2 LIGHTNING VALVES, 4 ECO VALVES



PULLS BOTH WAYS!



ONE YEAR LIMITED WARRANTY
 USE TENSILE STRENGTH TOW ROPE OF 3350 lbs.



BARCA 2

KICKBACK SERIES

SIZE: 70" x 63"

MAX. RIDERS: UP TO 2 RIDERS OR 340 lbs.
 BLADDER: 30/24 GAUGE
 COVER: FULLY COVERED 840/420 D NYLON
 HANDLES: 8 HANDLES W/ EVA KNUCKLE GUARDS
 PADS: 2 EVA PADS
 TOW HOOK: 2 QUICK CONNECT TOW HOOKS
 VALVES: 2 LIGHTNING VALVES

ONE YEAR LIMITED WARRANTY
 USE TENSILE STRENGTH TOW ROPE OF 2375 lbs.



PULLS BOTH WAYS!



SOFTec

BOXXER ST 2

PRO SERIES

new

SIZE: 66" x 66"

MAX. RIDERS: UP TO 2 RIDERS OR 340 lbs.
 BLADDER: 26 GAUGE
 COVER: FULLY COVERED 420D NYLON
 HANDLES: 6 HANDLES
 TOP DECK: SOFTEC
 TOW HOOK: 1 QUICK CONNECT TOW HOOK
 VALVES: 1 LIGHTNING VALVE

ONE YEAR LIMITED WARRANTY
 USE TENSILE STRENGTH TOW ROPE OF 2375 lbs.



Low Profile Design
 35% thinner than our Ultra Screamer. Easier to get onto the tube!



BARCA 3

KICKBACK SERIES

SIZE: 70" x 86"

MAX. RIDERS: UP TO 3 RIDERS OR 510 lbs.
 BLADDER: 30/24 GAUGE
 COVER: FULLY COVERED 840/420 D NYLON
 HANDLES: 12 HANDLES W/ EVA KNUCKLE GUARDS
 PADS: 3 EVA PADS
 TOW HOOK: 2 QUICK CONNECT TOW HOOKS
 VALVES: 2 LIGHTNING VALVES

ONE YEAR LIMITED WARRANTY
 USE TENSILE STRENGTH TOW ROPE OF 3350 lbs.



PULLS BOTH WAYS!



SOFTec

BOXXER ST 3

PRO SERIES

new

SIZE: 66" x 76"

MAX. RIDERS: UP TO 3 RIDERS OR 510 lbs.
 BLADDER: 28 GAUGE
 COVER: FULLY COVERED 840d NYLON
 HANDLES: 8 HANDLES
 TOP DECK: SOFTEC
 TOW HOOK: 1 QUICK CONNECT TOW HOOK
 VALVES: 1 LIGHTNING VALVE

ONE YEAR LIMITED WARRANTY
 USE TENSILE STRENGTH TOW ROPE OF 3350 lbs.



Low Profile Design
 35% thinner than our Ultra Screamer. Easier to get onto the tube!





LOWRIDER ST 2

PRO SERIES

new

SIZE: 70" DIAMETER

- MAX. RIDERS: UP TO 2 RIDERS OR 360 lbs.
- BLADDER: 26 GAUGE
- COVER: FULLY COVERED 420D NYLON
- HANDLES: 6 HANDLES
- TOP DECK: SOFTEC
- TOW HOOK: 1 QUICK CONNECT TOW HOOK
- VALVES: 1 LIGHTNING VALVE

ONE YEAR LIMITED WARRANTY
USE TENSILE STRENGTH TOW ROPE OF 2375 lbs.



Low Profile Design
35% thinner than our Ultra Screamer. Easier to get onto the tube!



CHALLENGER 2

COCKPIT SERIES

new

SIZE: 76" x 87"

- MAX. RIDERS: UP TO 2 RIDERS OR 340 lbs.
- BLADDER: 24/26/30 GAUGE
- COVER: FULLY COVERED 840/420 D NYLON
- HANDLES: 4 WEBBING HANDLES W/ KNUCKLEGUARDS
- TOP DECK: NYLON WITH INFLATABLE FLOORS
- TOW HOOK: QUICK CONNECT TOW HOOK
- VALVES: 2 LIGHTNING VALVES, 1 ECO VALVE



LOWRIDER ST 3

PRO SERIES

new

SIZE: 80" DIAMETER

- MAX. RIDERS: UP TO 3 RIDERS OR 510 lbs..
- BLADDER: 30 GAUGE
- COVER: FULLY COVERED 840D NYLON
- HANDLES: 6 HANDLES
- TOP DECK: SOFTEC
- TOW HOOK: 1 QUICK CONNECT TOW HOOK
- VALVES: 1 LIGHTNING VALVE

ONE YEAR LIMITED WARRANTY
USE TENSILE STRENGTH TOW ROPE OF 3350 lbs.



Low Profile Design
35% thinner than our Ultra Screamer. Easier to get onto the tube!



CHALLENGER 3

COCKPIT SERIES

new

SIZE: 77" x 105"

- MAX. RIDERS: UP TO 3 RIDERS OR 510 lbs.
- BLADDER: 24/26/30 GAUGE
- COVER: FULLY COVERED 840/420 D NYLON
- HANDLES: 6 WEBBING HANDLES W/ KNUCKLEGUARDS
- TOP DECK: NYLON WITH INFLATABLE FLOORS
- TOW HOOK: QUICK CONNECT TOW HOOK
- VALVES: 2 LIGHTNING VALVES, 1 ECO VALVE

ONE YEAR LIMITED WARRANTY
USE TENSILE STRENGTH TOW ROPE OF 3350 lbs.



CHILLER 2

PRO SERIES

SIZE: 70" x 70"

MAX. RIDERS: UP TO 2 RIDERS OR 340 lbs.
 BLADDER: 30/24 GAUGE
 COVER: FULLY COVERED 840/420 D NYLON
 HANDLES: 6 HANDLES W/ EVA KNUCKLE GUARDS
 PADS: 1 EVA PAD
 TOW HOOK: 1 QUICK CONNECT TOW HOOK
 VALVES: 2 LIGHTNING VALVES

ONE YEAR LIMITED WARRANTY
 USE TENSILE STRENGTH TOW ROPE OF 2375 lbs.



WEDGIE 2

WEDGE SERIES

SIZE: 73" x 51"

MAX. RIDERS: UP TO 2 RIDERS OR 340 lbs.
 BLADDER: 30/24 GAUGE
 COVER: FULLY COVERED 840/420 D NYLON
 HANDLES: 4 HANDLES W/ EVA KNUCKLE GUARDS
 PADS: 2 EVA PADS
 TOW HOOK: 1 QUICK CONNECT TOW HOOK
 VALVES: 1 LIGHTNING VALVE / 3 ECO VALVES

ONE YEAR LIMITED WARRANTY
 USE TENSILE STRENGTH TOW ROPE OF 2375 lbs



CHILLER 3

PRO SERIES

SIZE: 74" x 89"

MAX. RIDERS: UP TO 3 RIDERS OR 510 lbs.
 BLADDER: 30/24 GAUGE
 COVER: FULLY COVERED 840/420 D NYLON
 HANDLES: 8 HANDLES W/ EVA KNUCKLE GUARDS
 PADS: EVA PAD
 TOW HOOK: QUICK CONNECT TOW HOOK
 VALVES: 2 LIGHTNING VALVES

ONE YEAR LIMITED WARRANTY
 USE TENSILE STRENGTH TOW ROPE OF 3350 lbs.



WEDGIE 3

WEDGE SERIES

SIZE: 73" x 61"

MAX. RIDERS: UP TO 3 RIDERS OR 510 lbs.
 BLADDER: 30/24 GAUGE
 COVER: FULLY COVERED 840/420 D NYLON
 HANDLES: 6 HANDLES W/ EVA KNUCKLE GUARDS
 PADS: 3 EVA PADS
 TOW HOOK: 1 QUICK CONNECT TOW HOOK
 VALVES: 1 LIGHTNING VALVE / 4 ECO VALVES

ONE YEAR LIMITED WARRANTY
 USE TENSILE STRENGTH TOW ROPE OF 3350 lbs.



SLACKER 2

KICKBACK SERIES

SIZE: 70" x 60"

MAX. RIDERS: UP TO 2 RIDERS OR 340 lbs.
 BLADDER: 30/24 GAUGE
 COVER: FULLY COVERED 840/420 D NYLON
 HANDLES: 4 SOFT WEBBING HANDLES
 PADS: 2 EVA PADS
 TOW HOOK: QUICK CONNECT TOW HOOK
 VALVES: 1 LIGHTNING VALVE / 3 ECO VALVES

ONE YEAR LIMITED WARRANTY
 USE TENSILE STRENGTH TOW ROPE OF 2375 lbs.



SOMBRERO 4

KICKBACK SERIES

SIZE: 88" DIAMETER

MAX. RIDERS: UP TO 4 RIDERS OR 680 lbs.
 BLADDER: 30/26/24 GAUGE
 COVER: FULLY COVERED 840D NYLON
 HANDLES: 16 HANDLES W/ EVA KNUCKLE GUARDS
 PADS: INFLATABLE SEATS
 TOW HOOK: 1 QUICK CONNECT TOW HOOK
 VALVES: 3 LIGHTNING VALVES

ONE YEAR LIMITED WARRANTY
 USE TENSILE STRENGTH TOW ROPE OF 4100 lbs.



SLACKER 3

KICKBACK SERIES

SIZE: 70" x 80"

MAX. RIDERS: UP TO 3 RIDERS OR 510 lbs..
 BLADDER: 30/24 GAUGE
 COVER: FULLY COVERED 840/420 D NYLON
 HANDLES: 6 HANDLES W/ EVA KNUCKLE GUARDS
 PADS: 3 EVA PADS
 TOW HOOK: 1 QUICK CONNECT TOW HOOK
 VALVES: 1 LIGHTNING VALVE / 4 ECO VALVES

ONE YEAR LIMITED WARRANTY
 USE TENSILE STRENGTH TOW ROPE OF 3350 lbs.



SOMBRERO

KICKBACK SERIES

SIZE: 110" DIAMETER

MAX. RIDERS: UP TO 5 RIDERS OR 900 lbs.
 BLADDER: 30/24 GAUGE
 COVER: FULLY COVERED 840D NYLON
 HANDLES: 22 HANDLES W/ EVA KNUCKLE GUARDS
 PADS: INFLATABLE SEATS
 TOW HOOK: QUICK CONNECT TOW HOOK
 VALVES: 3 LIGHTNING VALVES

ONE YEAR LIMITED WARRANTY
 USE TENSILE STRENGTH TOW ROPE OF 6100 lbs.



SCREAMER DECK SERIES



SIZE: 60" DIAMETER

MAX. RIDERS: 1 RIDER or 170 lbs.
 BLADDER: 26 GAUGE
 COVER: FULLY COVERED 420 D NYLON
 HANDLES: 4 HANDLES w/ EVA KNUCKLE GUARDS
 PADS: 2 EVA PADS
 TOW HOOK: QUICK CONNECT TOW HOOK
 VALVES: 1 LIGHTNING VALVE

ONE YEAR LIMITED WARRANTY
 USE TENSILE STRENGTH TOW ROPE OF 1500 lbs.



ULTRA SCREAMER DECK SERIES



SIZE: 80" DIAMETER

MAX. RIDERS: UP TO 3 RIDERS OR 510 lbs.
 BLADDER: 28 GAUGE
 COVER: FULLY COVERED 840 D NYLON
 HANDLES: 6 HANDLES w/ EVA KNUCKLE GUARDS
 PADS: 2 EVA PADS
 TOW HOOK: QUICK CONNECT HOOK
 VALVES: 1 LIGHTNING VALVE

ONE YEAR LIMITED WARRANTY
 USE TENSILE STRENGTH TOW ROPE OF 3350 lbs.



SUPER SCREAMER DECK SERIES



SIZE: 70" DIAMETER

MAX. RIDERS: UP TO 2 RIDERS or 340 lbs.
 BLADDER: 26 GAUGE
 COVER: FULLY COVERED 420 D NYLON
 HANDLES: 6 HANDLES w/ EVA KNUCKLE GUARDS
 PADS: 2 EVA PADS
 TOW HOOK: QUICK CONNECT TOW HOOK
 VALVES: 1 VALVE

ONE YEAR LIMITED WARRANTY
 USE TENSILE STRENGTH TOW ROPE OF 2375 lbs.



X-SCREAM DECK SERIES



SIZE: 96" DIAMETER

MAX. RIDERS: UP TO 4 RIDERS OR 680 lbs.
 BLADDER: 30 GAUGE
 COVER: FULLY COVERED 840 D NYLON
 HANDLES: 8 HANDLES w/ EVA KNUCKLE GUARDS
 PADS: 2 EVA PADS
 TOW HOOK: QUICK CONNECT HOOK
 VALVES: 1 LIGHTNING VALVE

ONE YEAR LIMITED WARRANTY
 USE TENSILE STRENGTH TOW ROPE OF 4100 lbs.



LE TUBE DONUT SERIES



SIZE: 56" DIAMETER

MAX. RIDERS: 1 RIDER or 170 lbs.
 BLADDER: 26 GAUGE
 COVER: PARTIALLY COVERED 420 D NYLON
 HANDLES: 4 HANDLES W/ EVA KNUCKLE GUARDS
 TOW HOOK: 1 QUICK CONNECT TOW HOOK
 VALVES: 1 LIGHTNING VALVE.

ONE YEAR LIMITED WARRANTY
 USE TENSILE STRENGTH TOW ROPE OF 1500 lbs.

SUPER LE TUBE DONUT SERIES



SIZE: 70" DIAMETER

MAX. RIDERS: UP TO 2 RIDERS OR 340 lbs.
 BLADDER: 26 GAUGE
 COVER: PARTIALLY COVERED 840 D NYLON
 HANDLES: 6 HANDLES w/ EVA KNUCKLE GUARDS
 FLOOR: INFLATABLE FLOOR
 TOW HOOK: 1 QUICK CONNECT HOOK
 VALVES: 1 LIGHTNING VALVE

ONE YEAR LIMITED WARRANTY
 USE TENSILE STRENGTH TOW ROPE OF 2375 lbs.

LE TUBE DELUXE DONUT SERIES



SIZE: 56" DIAMETER

MAX. RIDERS: 1 RIDER OR 170 lbs.
 BLADDER: 26 GAUGE
 COVER: FULLY COVERED 420 D NYLON
 HANDLES: 4 HANDLES W/ EVA KNUCKLE GUARDS
 TOW HOOK: 1 QUICK CONNECT TOW HOOK
 VALVES: 1 LIGHTNING VALVE

ONE YEAR LIMITED WARRANTY
 USE TENSILE STRENGTH TOW ROPE OF 1500 lbs.

SUPER LE TUBE DELUXE DONUT SERIES



SIZE: 70" DIAMETER

MAX. RIDERS: UP TO 2 RIDERS OR 340 lbs.
 BLADDER: 26 GAUGE
 COVER: FULLY COVERED 840 D NYLON
 HANDLES: 8 HANDLES w/ EVA KNUCKLE GUARDS
 FLOOR: INFLATABLE FLOOR
 TOW HOOK: 1 QUICK CONNECT HOOK
 VALVES: 1 LIGHTNING VALVE

ONE YEAR LIMITED WARRANTY
 USE TENSILE STRENGTH TOW ROPE OF 2375 lbs.

WAKE WARRIOR 1

COCKPIT SERIES

SIZE: 45" X 60"

MAX. RIDERS: 1 RIDER OR 170 lbs.
 BLADDER: 26/24 GAUGE
 COVER: FULLY COVERED 420 D NYLON
 HANDLES: 2 HANDLES W/ EVA KNUCKLE GUARDS
 PADS: INFLATABLE FLOOR
 TOW HOOK: 1 QUICK CONNECT TOW HOOK
 VALVES: 1 LIGHTNING VALVE, 2 ECO VALVES

ONE YEAR LIMITED WARRANTY
 USE TENSILE STRENGTH TOW ROPE OF 1500 lbs.



WAKE WARRIOR 2

COCKPIT SERIES

SIZE: 74" X 70"

MAX. RIDERS: UP TO 2 RIDERS OR 340 lbs.
 BLADDER: 28/24 GAUGE
 COVER: FULLY COVERED 840 D NYLON
 HANDLES: 4 HANDLES W/ EVA KNUCKLE GUARDS
 PADS: INFLATABLE FLOORS
 TOW HOOK: 1 QUICK CONNECT TOW HOOK
 VALVES: 1 LIGHTNING VALVE, 4 ECO VALVES

ONE YEAR LIMITED WARRANTY
 USE TENSILE STRENGTH TOW ROPE OF 2375 lbs.



WAKE WARRIOR 3

COCKPIT SERIES

SIZE: 74" X 104"

MAX. RIDERS: UP TO 3 RIDERS OR 510 lbs.
 BLADDER: 30/24 GAUGE
 COVER: FULLY COVERED 840 D NYLON
 HANDLES: 6 HANDLES W/ EVA KNUCKLE GUARDS
 PADS: INFLATABLE FLOORS
 TOW HOOK: 1 QUICK CONNECT TOW HOOK
 VALVES: 1 LIGHTNING VALVE, 6 ECO VALVES

ONE YEAR LIMITED WARRANTY
 USE TENSILE STRENGTH TOW ROPE OF 3350 lbs.

HAMMERHEAD 2 DECK SERIES

SIZE: 61" X 97"

MAX. RIDERS: UP TO 2 RIDERS OR 340 lbs.
 BLADDER: 28 GAUGE
 COVER: FULLY COVERED 420/840 D NYLON
 HANDLES: 6 HANDLES W/ EVA KNUCKLE GUARDS
 PADS: 2 EVA PADS
 TOW HOOK: 1 QUICK CONNECT TOW HOOK
 VALVES: 1 LIGHTNING VALVE

ONE YEAR LIMITED WARRANTY
 USE TENSILE STRENGTH TOW ROPE OF 2375 lbs.



SWIFT 2 DECK SERIES

SIZE: 71" X 80"

MAX. RIDERS: UP TO 2 RIDERS OR 340 lbs.
 BLADDER: 24 GAUGE
 COVER: FULLY COVERED 840 D NYLON
 HANDLES: 6 HANDLES W/ EVA KNUCKLE GUARDS
 PADS: 2 EVA PADS
 TOW HOOK: 1 QUICK CONNECT TOW HOOK
 VALVES: 1 LIGHTNING VALVE

ONE YEAR LIMITED WARRANTY
 USE TENSILE STRENGTH TOW ROPE OF 2375 lbs.



HAMMERHEAD 3 DECK SERIES

SIZE: 70" X 107"

MAX. RIDERS: UP TO 3 RIDERS OR 510 lbs.
 BLADDER: 28 GAUGE
 COVER: FULLY COVERED 840 D NYLON
 HANDLES: 8 HANDLES W/ EVA KNUCKLE GUARDS
 PADS: 3 EVA PADS
 TOW HOOK: 1 QUICK CONNECT TOW HOOK
 VALVES: 1 LIGHTNING VALVE

ONE YEAR LIMITED WARRANTY
 USE TENSILE STRENGTH TOW ROPE OF 3350 lbs.



SWIFT 3 DECK SERIES

SIZE: 71" X 90"

MAX. RIDERS: UP TO 3 RIDERS OR 510 lbs.
 BLADDER: 24 GAUGE
 COVER: FULLY COVERED 840 D NYLON
 HANDLES: 8 HANDLES W/ EVA KNUCKLE GUARDS
 PADS: 3 EVA PADS
 TOW HOOK: 1 QUICK CONNECT TOW HOOK
 VALVES: 1 LIGHTNING VALVE

ONE YEAR LIMITED WARRANTY
 USE TENSILE STRENGTH TOW ROPE OF 3350 lbs.





DART 2 COCKPIT SERIES

- SIZE: 70" X 60"
- MAX. RIDERS: UP TO 2 RIDERS OR 340 lbs.
- BLADDER: 30/24 GAUGE
- COVER: FULLY COVERED 840/420 D NYLON
- HANDLES: 4 HANDLES W/ EVA KNUCKLE GUARDS
- SEATS: 2 INFLATABLE SEATS
- TOW HOOK: 1 QUICK CONNECT TOW HOOK
- VALVES: 2 LIGHTNING VALVES

ONE YEAR LIMITED WARRANTY
USE TENSILE STRENGTH TOW ROPE OF 2375 lbs.



TUBESTER DONUT SERIES

- SIZE: 54" DIAMETER
- MAX. RIDERS: 1 RIDER OR 170 lbs.
- BLADDER: 24 GAUGE
- COVER: PARTIALLY COVERED 420D NYLON
- HANDLES: 4 HANDLES W/ EVA KNUCKLE GUARDS
- VALVES: 1 ECO VALVE

ONE YEAR LIMITED WARRANTY
USE TENSILE STRENGTH TOW ROPE OF 1500 lbs.



DART 3 COCKPIT SERIES

- SIZE: 77" X 86"
- MAX. RIDERS: UP TO 3 RIDERS OR 510 lbs.
- BLADDER: 28/24 GAUGE
- COVER: FULLY COVERED 840/420 D NYLON
- HANDLES: 6 HANDLES W/ EVA KNUCKLE GUARDS
- SEATS: 3 INFLATABLE SEATS
- TOW HOOK: 1 QUICK CONNECT TOW HOOK
- VALVES: 1 LIGHTNING VALVE, 6 ECO VALVES

ONE YEAR LIMITED WARRANTY
USE TENSILE STRENGTH TOW ROPE OF 3350 lbs.



2-DALOO DONUT SERIES

- SIZE: 80" x 56"
- MAX. RIDERS: 2 RIDERS OR 340 lbs.
- BLADDER: 24 GAUGE
- COVER: PARTIALLY COVERED 420D NYLON
- HANDLES: 4 HANDLES W/ EVA KNUCKLE GUARDS
- TOW HOOK: 1 QUICK CONNECT TOW HOOK
- VALVES: 1 LIGHTNING VALVE

ONE YEAR LIMITED WARRANTY
USE TENSILE STRENGTH TOW ROPE OF 2375 lbs.





PLUSH TOP
SHUTTLE 2
 PLUSH TOP SERIES

SIZE: 68" X 58"

MAX. RIDERS: UP TO 2 RIDERS OR 340 lbs.
 BLADDER: 30 GAUGE
 COVER: PLUSH TOP FLEECE
 HANDLES: 4 HANDLES
 TOW HOOK: 1 TPU QUICK CONNECT TOW HOOK
 VALVES: 1 LIGHTNING VALVE

TWO YEAR LIMITED WARRANTY
 USE TENSILE STRENGTH TOW ROPE OF 2375 lbs.

PLUSH TOP
ORBIT 2
 PLUSH TOP SERIES

SIZE: 70" DIAMETER

MAX. RIDERS: UP TO 2 RIDERS OR 340 lbs.
 BLADDER: 30 GAUGE
 COVER: PLUSH TOP FLEECE
 HANDLES: 6 HANDLES
 TOW HOOK: 1 TPU QUICK CONNECT TOW HOOK
 VALVES: 1 LIGHTNING VALVE

TWO YEAR LIMITED WARRANTY
 USE TENSILE STRENGTH TOW ROPE OF 2375 lbs.



PLUSH TOP
BRONCO 2
 PLUSH TOP SERIES

SIZE: 71" X 58"

MAX. RIDERS: UP TO 2 RIDERS OR 340 lbs.
 BLADDER: 30 GAUGE
 COVER: PLUSH TOP FLEECE
 HANDLES: 4 HANDLES
 TOW HOOK: 1 TPU QUICK CONNECT TOW HOOK
 VALVES: 1 LIGHTNING VALVE

TWO YEAR LIMITED WARRANTY
 USE TENSILE STRENGTH TOW ROPE OF 2375 lbs.





6 PERSON PARTY LOUNGE

PARTY SERIES

SIZE: 126" DIAMETER

- MAX. PEOPLE: UP TO 6
- MATERIAL: 18 GAUGE
- CUP HOLDERS: 6
- TIE DOWNS: 4 TIE OFF POINTS
- VALVES: 1 LIGHTNING VALVE

ONE YEAR LIMITED WARRANTY



8 PERSON PARTY LOUNGE

PARTY SERIES

SIZE: 126" DIAMETER

- MAX. PEOPLE: UP TO 8
- MATERIAL: 18 GAUGE
- CUP HOLDERS: 8
- TIE DOWNS: 4 TIE OFF POINTS
- VALVES: 1 LIGHTNING VALVE

ONE YEAR LIMITED WARRANTY



new

GHOST COUCH

PARTY SERIES

SIZE: 58" X 72"

- MAX. PEOPLE: UP TO 2 RIDERS OR 340 lbs.
- BLADDER: 28 GAUGE
- VALVES: 1 LIGHTNING VALVE

VINYL REPAIR KIT



12V INFLATOR

- AC 120v/dc 12v
- 3 standard nozzles
- Seven feet of wire cord
- AC adaptor
- Inflates up to 1.2 psi
- Seven feet of wire cord



new

600W OB/2.5 INFLATOR

- O'Brien's FASTEST tube pump!
- High-volume 110V electric pump
- Inflates up to 2.5 psi
- Max output: 1600 l/min
- Max power: 600 Watt
- Kink-proof hose
- * Wide selection of nozzles included
- Recommended for inflating large tubes



HIGH HP 12V INFLATOR

- Heavy-duty construction
- Large-diameter hose
- Inflates/deflates large-volume inflatable faster
- Inflates up to 2.3 psi
- Comes with a wide selection of nozzles



110V HIGH HP INFLATOR

- Powerful, high-volume 110V electric pump
- Inflates up to 2.2 psi
- Quickly, easily inflates/deflates all inflatable
- Kink-proof hose
- Wide selection of nozzles included



12V RECHARGEABLE INFLATOR

A convenient way to inflate your favorite tubes, works on a single charge from a car cigarette lighter and produces .61 psi.

- 3 standard nozzles
- 1.09 psi
- A/C and D/C charger



FOAM

& MATS



WATER CARPET
FOAM SERIES

SIZE: 18' x 6' x 1.25"

GROMMETS: 1 w/ rope attachment
FOAM: 3 Layers
DENSITY: Firm/Soft/Firm

ONE YEAR LIMITED WARRANTY



SIDE VIEW



SIDE VIEW



SIDE VIEW



SOFTIE
WATER CARPET
FOAM SERIES

SIZE: 18' x 5'9" x 1.625"

GROMMETS: 1 w/ rope attachment
FOAM: 3 Layers
DENSITY: Soft/Firm/Soft

ONE YEAR LIMITED WARRANTY



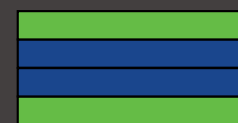
SIDE VIEW

DELUXE
WATER CARPET
FOAM SERIES

SIZE: 18' x 6' x 1.625"

GROMMETS: 2 w/ rope attachments
FOAM: 4 Layers
DENSITY: Soft/Firm/Soft/Firm

ONE YEAR LIMITED WARRANTY



SIDE VIEW

ULTRA
WATER CARPET
FOAM SERIES

SIZE: 19.5' x 6' x 2.25"

GROMMETS: 2 w/ rope attachments
FOAM: 5 Layers
DENSITY: Soft/Firm/Soft /Soft/Firm

ONE YEAR LIMITED WARRANTY



SIDE VIEW



FOAM HAMMOCK

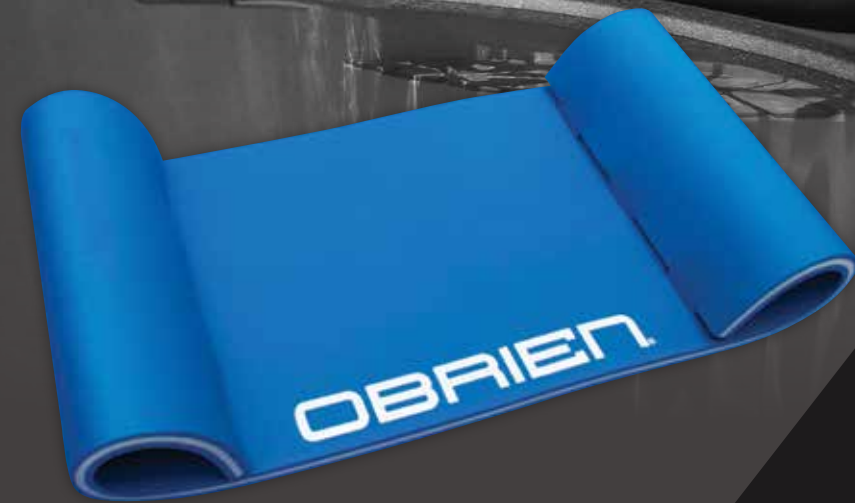
• 78" L x 24" W
• 3 Layers of foam
• Offered in Blue or Green
• 1 YEAR LIMITED WARRANTY



SIDE VIEW



SIDE VIEW



1 - PERSON FOAM LOUNGE

• 86" L x 24" W
• 3 Layers of foam
• Offered in Blue or Green
• 1 YEAR LIMITED WARRANTY



SIDE VIEW



SIDE VIEW



WATER SADDLE

• 21" L x 16" W
• Offered in a variety of colors



2 - PERSON FOAM LOUNGE

• 86" L x 56" W
• 3 Layers of foam
• Offered in Blue or Green
• 1 YEAR LIMITED WARRANTY



SIDE VIEW



SIDE VIEW

XL WATER SADDLE

• 32" L x 16" L
• Offered in a variety of colors



96

93

94

95



new
PLAYFIELD
INFLATABLE SERIES

- ▶ INFLATES TO A RIGID PLATFORM.
- ▶ DUAL-ACTION SUP PUMP INCLUDED.
- ▶ PREMIUM 4" DROP STITCH TECHNOLOGY.
- ▶ DOUBLE REINFORCED SEAMS.
- ▶ INTEGRATED CARRYING HANDLES.
- ▶ TIE-OFF D-RINGS.
- ▶ HEAVY GAUGE CONSTRUCTION.
- ▶ DEFLATES QUICKLY FOR CONVENIENT STORAGE.

AVAILABLE IN TWO SIZES:
6' X 12' X 4" --- 6' X 18' X 4"

PLAYFIELD CANOPY

Our detachable canopy provides shade on those hot sunny days, providing the ultimate relaxation spot for your days on the water! **Sold Separately.**



48"W x 54"L



new
LOTUS YOGA MAT
INFLATABLE SERIES

AVAILABLE IN TWO SIZES:

SMALL: 3' X 6' X 5"
MEDIUM: 3' X 7' X 5"

- ▶ PREMIUM 4" DROP STITCH CONSTRUCTION
- ▶ DOUBLE REINFORCED SEAMS
- ▶ INFLATES TO A RIGID PLATFORM
- ▶ INTEGRATED HANDLES & TIE-OFF D-RINGS
- ▶ DEFLATES QUICKLY FOR CONVENIENT STORAGE.

Take your yoga practice to the next level on the water! Our Lotus Yoga mat helps you unwind, breathing fresh air, feeling the water underneath you. Floating on water adds an element of both freedom and instability to your workout, providing a better engagement of your core as well instantaneous feedback on your technique. If you have too much weight on one side in a pose, the mat will lean, letting you know to correct your body position. Your movements will slow down, your poses more precise, your connection with both nature and your movement enhanced, developing mindfulness, focus, and balance.



VESTS



TEAM RIDER: SEAN O'BRIEN

NEO/BIOLITE SIZING

VEST		CHEST
ADULT	XS	28" - 32"
ADULT	S	32" - 36"
ADULT	M	36" - 40"
ADULT	L	40" - 44"
ADULT	XL	44" - 48"
ADULT	2XL	48" - 52"
ADULT	3XL	52" - 56"



WAKE NCGA PRO SERIES

SIZES: XS, S, M, L, XL, 2XL

- ▶ Reversible.
- ▶ Available in orange/black or green/black
- ▶ Full front zipper.
- ▶ Not a U.S. Coast Guard Approved device



MENS TECH NEOPRENE SERIES

SIZES: XS / SM / M / LG / XL / 2XL / 3XL

- ▶ Neoprene outer for comfortable fit.
- ▶ Our thinnest CGA vest.
- ▶ Zip closure and 2 belts for security.
- ▶ Hinge point for maximum comfort.
- ▶ PWC ring.
- ▶ U.S. Coast Guard Approved



MENS FLEX V BACK BIOLITE SERIES

SIZES: XS / SM / M / LG / XL / 2XL / 3XL

- ▶ Available in orange, yellow, or blue.
- ▶ Lighter weight than Neoprene.
- ▶ Zip closure and 2 belts for security.
- ▶ Multiple front and side hinges.
- ▶ PWC ring.
- ▶ U.S. Coast Guard Approved



TRADITIONAL BIOLITE SERIES

SIZES: XS / SM / M / LG / XL / 2XL / 3XL

- ▶ Available in Yellow, Red, Cyan, Black, or Blue.
- ▶ Biolite outer for comfortable fit.
- ▶ Lighter weight than Neoprene.
- ▶ Zip closure and 2 belts for security.
- ▶ U.S. Coast Guard Approved



new



Tarah Mikacich
TARAH MIKACICH
COMP VEST



LADIES SPARK NCGA PRO SERIES

SIZES: XS / SM / M / LG / XL

- ▶ Tapered cut.
- ▶ Full front zipper.
- ▶ 4 way stretch neoprene.
- ▶ **Not** a U.S. Coast Guard Approved device



LADIES FLEX V-BACK BIOLITE SERIES

SIZES: XS / SM / M / LG / XL

- ▶ Biolite outer for comfortable fit.
- ▶ Multiple front and side hinges.
- ▶ Zip closure and 2 belts for security.
- ▶ V-BACK stretch panel.
- ▶ Breathable Material.
- ▶ U.S. Coast Guard Approved



LADIES FOCUS BIOLITE SERIES

SIZES: XS / SM / M / LG / XL

- ▶ Front hinge
- ▶ BioLite outer for comfortable fit.
- ▶ Lighter weight than Neoprene.
- ▶ Breathable Material.
- ▶ Zip closure and 2 belts.
- ▶ Wide armholes designed for activity.
- ▶ U.S. Coast Guard Approved



LADIES EMPRESS BIOLITE SERIES

SIZES: XS / SM / M / LG / XL

- ▶ Front hinge.
- ▶ BioLite outer for comfortable fit.
- ▶ Lighter weight than Neoprene.
- ▶ Breathable Material.
- ▶ Zip closure and 2 belts.
- ▶ Wide armholes designed for activity.
- ▶ U.S. Coast Guard Approved

BioLite TECHNOLOGY

THE POWER OF GREEN!

BioLite technology unleashes the power of a lighter weight fabric that is an eco-friendly alternative.

LIGHTER WEIGHT!

BREATHABLE!

ENVIRONMENTALLY FRIENDLY!

PRINTED WITH SOY-BASED INKS!



JUNIOR VEST

SIZE: 75-125 lbs / Chest Size: 28"-32"

- ▶ Available in Blue or Pink
- ▶ BioLite outer for comfortable fit.
- ▶ Lighter weight than Neoprene.
- ▶ Breathable Material.
- ▶ Printed with Soy-based inks.
- ▶ Zip closure and 2 belts for security.
- ▶ U.S. Coast Guard Approved



PINK YOUTH

SIZE: 50-90 LBS.

- ▶ Zip closure and 2 belts for security.
- ▶ BioLite outer for comfortable fit.
- ▶ Lighter weight than Neoprene.
- ▶ Breathable Material.
- ▶ Printed with Soy based inks.
- ▶ More resistant to mold & mildew.
- ▶ Wide armholes for comfort.
- ▶ U.S. Coast Guard Approved



AQUA CHILD

SIZE: 30-50 LBS.

- ▶ Zip closure and 2 belts for security.
- ▶ BioLite outer for comfortable fit.
- ▶ Lighter weight than Neoprene.
- ▶ Breathable Material.
- ▶ Printed with Soy based inks.
- ▶ More resistant to mold & mildew.
- ▶ Wide armholes for comfort.
- ▶ U.S. Coast Guard Approved



AQUA INFANT

SIZE: less than 30 LBS.

- ▶ Zip closure and 1 belt for security.
- ▶ BioLite outer for comfortable fit.
- ▶ Lighter weight than Neoprene.
- ▶ Breathable Material.
- ▶ Printed with Soy based inks.
- ▶ More resistant to mold & mildew.
- ▶ Wide armholes for comfort.
- ▶ Type II U.S. Coast Guard Approved



BLUE YOUTH

SIZE: 50-90 LBS.

- ▶ Zip closure and 2 belts for security.
- ▶ BioLite outer for comfortable fit.
- ▶ Lighter weight than Neoprene.
- ▶ Breathable Material.
- ▶ Printed with Soy based inks.
- ▶ More resistant to mold & mildew.
- ▶ Wide armholes for comfort.
- ▶ U.S. Coast Guard Approved



BLUE CHILD

SIZE: 30-50 LBS.

- ▶ Zip closure and 2 belts for security.
- ▶ BioLite outer for comfortable fit.
- ▶ Lighter weight than Neoprene.
- ▶ Breathable Material.
- ▶ Printed with Soy based inks.
- ▶ More resistant to mold & mildew.
- ▶ Wide armholes for comfort.
- ▶ U.S. Coast Guard Approved



BLUE INFANT

SIZE: less than 30 LBS.

- ▶ Zip closure and 1 belt for security.
- ▶ BioLite outer for comfortable fit.
- ▶ Lighter weight than Neoprene.
- ▶ Breathable Material.
- ▶ Printed with Soy based inks.
- ▶ More resistant to mold & mildew.
- ▶ Wide armholes for comfort.
- ▶ Type II U.S. Coast Guard Approved



BABY SAFE

SIZE: less than 30 LBS.

- ▶ Available in Blue or Aqua.
- ▶ Soft "Smoothspan" fabric. (A poly/spandex material that is lightweight and soft next to the skin. Smoothspan provides super stretch for the ultimate fit and quick drainage of any water in the vest.)
- ▶ Type II U.S. Coast Guard Approved



PET VEST

- ▶ Nylon handle on back.
- ▶ 1 Neck buckle.
- ▶ 2 adjustable ladder locks.

SIZE	WEIGHT	NECK	CHEST	WAIST
XS	8 - 15 lbs.	10" - 13"	18" - 24"	14" - 20"
S	15 - 30 lbs.	12" - 16"	22" - 28"	18" - 24"
M	30 - 60 lbs.	15" - 19"	26" - 32"	22" - 28"
L	60 - 80 lbs.	18" - 22"	30" - 38"	26" - 32"
XL	80 lbs. & over	18" - 24"	30" - 42"	26" - 36"

MENS 4 BELT PRO

NYLON SERIES

SIZES: XS / SM / M / LG / XL / 2XL / 3XL / 4XL / 5XL

- ▶ Available in Red or Blue
- ▶ Soft, flexible foam core for extra comfort.
- ▶ Sturdy nylon exterior for durability.
- ▶ 4 buckles for security and excellent fit.
- ▶ Big armholes allow a wide range of motion.
- ▶ U.S. Coast Guard Approved



NYLON SIZING

VEST	CHEST SIZE
XS	28" - 32"
S	32" - 36"
M	36" - 40"
L	40" - 44"
XL	44" - 48"
2XL	48" - 52"
3XL	52" - 56"
4XL	56" - 62"
5XL	62" - 68"
TEEN X/S	28" - 32"
ADULT S/M	32" - 40"
ADULT L/XL	40" - 52"
ADULT SL	50" - 60"
ADULT ESL	60" - 70"

KID'S NEO/NYLON SIZING

VEST	WEIGHT RANGE
INFANT	UP TO 30 lbs
CHILD	30-50 lbs
YOUTH	50-90 lbs

WOMENS 3 BELT PRO

NYLON SERIES

SIZES: XS / SM / M / LG

- ▶ Available in Purple or Aqua
- ▶ Soft, flexible foam core for extra comfort.
- ▶ Sturdy nylon exterior for durability.
- ▶ 3 buckles for security and excellent fit.
- ▶ Big armholes allow a wide range of motion.
- ▶ U.S. Coast Guard Approved
- ▶ Available in Aqua or Yellow



4 BELT ADJ. SPORT

NYLON SERIES

SIZES: XS / SM/M / LG/XL / SUPER Large / X-SUPER Large

- ▶ 4 buckles for a good fit.
- ▶ Soft, flexible foam core.
- ▶ Sturdy nylon exterior for durability.
- ▶ U.S. Coast Guard Approved



WOMENS 3 BELT ADJ. SPORT

NYLON SERIES

SIZES: XS / SM/M

- ▶ Soft, flexible foam core for extra comfort.
- ▶ Sturdy nylon exterior for durability.
- ▶ 3 buckles for security and excellent fit.
- ▶ Big armholes allow a wide range of motion.
- ▶ U.S. Coast Guard Approved



THROW CUSHION

NYLON SERIES

- ▶ Add comfortable seating and safety to boat
- ▶ Straps on back for carrying and throwing
- ▶ U.S. Coast Guard Approved Type IV
- ▶ Available in Blue or Red



UNIVERSAL 4-PACK

NYLON SERIES

- ▶ Adult Universal fitting chest sizes 30-52
- ▶ Sturdy belts with slide-release buckles
- ▶ Open sides
- ▶ Vests pack easily in zippered storage bag
- ▶ U.S. Coast Guard Approved Type III
- ▶ Available in Blue or Red



LIME TEEN NYLON

NYLON SERIES

SIZES: 90 LBS. and up

- ▶ Fits chest sizes 28"-32"
- ▶ Soft, flexible foam core.
- ▶ Sturdy nylon exterior for durability.
- ▶ USCG approved.

BLUE YOUTH NYLON

NYLON SERIES

SIZES: Youth 50-90 LBS.

- ▶ Three belts for security.
- ▶ 150D polyester exterior for durability.
- ▶ USCG approved.



PURPLE TEEN NYLON

NYLON SERIES

SIZES: 90 LBS. and up.

- ▶ Fits chest sizes 28"-32"
- ▶ Soft, flexible foam core.
- ▶ Sturdy nylon exterior for durability.
- ▶ USCG approved

PINK YOUTH NYLON

NYLON SERIES

SIZES: Youth 50-90 LBS.

- ▶ Three belts for security.
- ▶ 200D nylon exterior for durability.
- ▶ USCG approved



BLUE CHILD NYLON

NYLON SERIES

SIZES: Children 30-50 LBS.

- ▶ Soft, flexible foam core
- ▶ 150D polyester exterior for durability.
- ▶ Leg loop strap with buckle.
- ▶ U.S. Coast Guard Approved

RED YOUTH NYLON W/ COLLAR

NYLON SERIES

SIZES: Youth 50-90 LBS.

- ▶ Collar with grab strap for safety.
- ▶ 150D polyester exterior for durability.
- ▶ Three belts for security.
- ▶ Type II U.S. Coast Guard Approved



PINK CHILD NYLON

NYLON SERIES

SIZES: Children 30-50 LBS.

- ▶ Soft, flexible foam core.
- ▶ 200D nylon exterior for durability.
- ▶ Leg loop strap with buckle
- ▶ U.S. Coast Guard Approved

PINK YOUTH NYLON W/ COLLAR

NYLON SERIES

SIZES: Youth 50-90 LBS.

- ▶ Collar with grab strap for safety.
- ▶ 200D nylon exterior for durability.
- ▶ Three belts for security
- ▶ Type II U.S. Coast Guard Approved



RED CHILD NYLON W/ COLLAR

NYLON SERIES

SIZES: Children 30-50 LBS.

- ▶ Collar with grab strap for safety.
- ▶ 150D polyester exterior for durability.
- ▶ Three belts for security.
- ▶ Type II U.S. Coast Guard Approved

RED INFANT NYLON

NYLON SERIES

SIZES: less than 30 LBS.

- ▶ Collar with grab strap for safety.
- ▶ 150D polyester exterior for durability.
- ▶ Leg loop strap with buckle
- ▶ One belt for security.
- ▶ Type II U.S. Coast Guard Approved



PINK CHILD NYLON W/ COLLAR

NYLON SERIES

SIZES: Children 30-50 LBS.

- ▶ Collar with grab strap for safety.
- ▶ 200D nylon exterior for durability.
- ▶ Three belts for security
- ▶ Type II U.S. Coast Guard Approved

PINK INFANT NYLON

NYLON SERIES

SIZES: Less than 30 LBS.

- ▶ Collar with grab strap for safety.
- ▶ 200D nylon exterior for durability.
- ▶ Leg loop strap with buckle
- ▶ One belt for security
- ▶ Type II U.S. Coast Guard Approved



ROPES

& HANDLES



TEAM RIDER: TARAH MIKACICH



PRO WAKE W/ FLIGHT LINE

Features a rigid injection molded frame. Supremely comfortable 15-inch plush fabric grip. 5.5-inch anti-roll control arms. 80' zero-stretch flat profile Silicone coated Flight Line with three 5' sections for 65', 70', 75' & 80' line-lengths. Available in White or Green.

TEAM T-BAR W/ SI14 LINE

Features a rigid injection molded frame. Comfortable 15-inch micro-fiber suede grip. T-Bar for ultimate wrap tricks. 5.5-inch anti-roll control arms. 80' zero-stretch Silicone coated Armor Line with three 5' sections for 65', 70', 75' & 80' line-lengths.



COMP HANDLE W/ SI14 LINE

Comfortable 15" Micro-fiber grip wrapped in soft endcaps for a more comfortable feel all around. 80' zero-stretch Silicone-coated Armor Line with three 5' sections for 65', 70', 75' and 80' line-lengths.



PROP HANDLE W/ REACTOR LINE

15-inch machined EVA floating handle with exclusive "prop" design. 70' Reactor mainline with Multi-filament polypropylene cover. 70' total line length with three 5' sections for 55', 60', 65' & 70' lengths.

PROP HANDLE W/ FLAT SPECTRA LINE

15-inch machined EVA floating handle with exclusive "prop" design. 70' Flat Spectra line. 70' total line length with three 5' sections for 55', 60', 65' & 70' lengths.



4-SECTION POLY-E WAKE COMBO

The ultimate first wake rope, great for wakeboarding and kneeboarding. Comfortable 15-inch EVA prop grip 55' low-stretch poly-e mainline with three 5' sections for 55', 60', 65' & 70' line-lengths.

Available in Green, Blue or Red



new

CORE SURF ROPE

10" wide handle, diamond stitched micro-fiber suede grip, 24' total length - one 8' section, two 4' sections, one 4' multi-loop section for fine tuning rope length. 20' total length.



RELAX SURF ROPE

9" wide micro-fiber suede grip multi-loop section for fine tuning rope length. With three 5' sections for 10', 15', 20' and 25' lengths. One 4' multi-loop section for fine tuning rope length. 20' total length.



PRO SURF ROPE

9" wide sublimated polyester grip. One multi-loop section for fine tuning rope length. With three 5' sections for 10', 15', 20' and 25' wakesurf lengths. One 4' multi-loop section for fine tuning rope length. 20' total length.



OBRIEN PRO SKI HANDLE

13" wide x 1.08" diameter Pro Waterski handle with 4-rope construction for an extremely durable braid. USA Waterski approved 1/4" Polypro bridle section.

OBRIEN 10-SECTION MAINLINE

10 section 75' Pro Waterski mainline with 4-rope construction for an extremely durable braid. Made of USA Waterski approved 1/4" Polypro rope. 10 sections allow for USA Waterski sanctioned line 75' to 45' off.





8-SECTION SKI COMBO

Our value-priced, hard-core ski rope. With 8 sections, this rope can be shortened to nearly any "real-world" line-length you'll need. Begins at a total rope length of 75', but with 8 sections for skiing at 15', 22', 28', 32', 35', 38', and 40' off (or line lengths of 75', 60', 53', 47', 43', 40', 37' and 35'). A 12" wide aluminum-core EVA handle on a 5' detachable bridle section. The rope is made of top-quality 16-strand, 40 filament polypropylene rope. If slalom is your thing, this is your rope.

5-SECTION COMBO

Take your skiing pretty seriously? Then you'll want to check out this rope. Begins at a total rope length of 75', but with 5 sections for skiing at 15', 22', 28', or 32' off (or line lengths of 75', 60', 53', 47', or 43'). A 12" wide aluminum-core EVA handle on a 5' detachable bridle section. The rope is made of top-quality 16-strand, 40 filament polypropylene rope. One of the most versatile ropes in our line.



2-SECTION COMBO

This is our least expensive "all-purpose" rope. A 12" wide aluminum-core Sure-Grip handle on a 5' detachable bridle section is combined with a 70' mainline (for 75' total rope length) with a takeoff loop at 28' off (for a 47' length). 75' is the standard length for skiing, while 47' is a good length for wakeboarding or kneeboarding, making this a do-it-all rope. The rope is made of top-quality 16-strand, 40 filament polypropylene rope.



1-SECTION COMBO

Just need a good quality ski rope? This is our simplest answer, but still made with the quality for which O'Brien is famous. A 12" wide aluminum-core Sure-Grip handle on a 5' detachable bridle section. The 70' mainline rope (for a total rope length of 75') is made of top-quality 16-strand, 40 filament polypropylene rope.

Available in: Orange/White, Yellow/Black

1-SECTION DEEP-V COMBO

A fantastic rope for teaching or assisting anyone struggling to do a deep-water slalom start. The bridle section is vinyl coated to protect the rope from ski abrasion. Just rest your ski inside the DEEP-V, and let the "V" hold the ski straight. Makes deep water starts vastly easier. Once you're up, the rope simply pulls out from underneath the ski and performs just like a regular ski rope. Crossbar in bridle section keeps ski tip in perfect starting position and protects against crunched knuckles. A 70 foot mainline with a 5 foot detachable DEEP-V bridle section and a 12-inch wide aluminum-core handle. 16 strand, 40 filament polypropylene rope construction.



O'BRIEN PRO HANDLE W/ 10-SECTION MAINLINE

13" wide handle with 4-rope construction mainline for an extremely durable braid. USA Waterski approved 1/4" Polypro rope. 10 sections allow for USA Waterski sanctioned line 75' to 45' off.



2-PERSON TUBE ROPE

This is our "regular" tube rope, best for 1 and 2 person tubes, up to 340 pounds maximum total rider weight. 60' length, with an average 2,375 lbs. break strength

• Available in Green, Red, or Orange.



4-PERSON TUBE ROPE

This is our most popular tube rope, rated for up to 4 riders, 680 pounds maximum total rider weight. 60' length, with an average break strength of 4,100 pounds.

• Available in Green, Red, or Orange.



6-PERSON TUBE ROPE

This is the mack daddy of tube ropes! Like our other tube ropes, this one is 60' in length. But this one is a monstrous 3/4" in diameter, rated for 1,020 pounds (6 riders) maximum total rider weight. 6,100 pounds average break strength.

• Available in Green, Red, or Orange.



PONTON BRIDLE

This high-impact plastic float / pulley system that allows for easy attachment of ski rope. Snap hooks attach quickly to existing boat hardware. 1800lbs max. pulling weight.

• Available in 16' and 12' size for Pontoon boats.



BOAT/DOCK BUNGEE

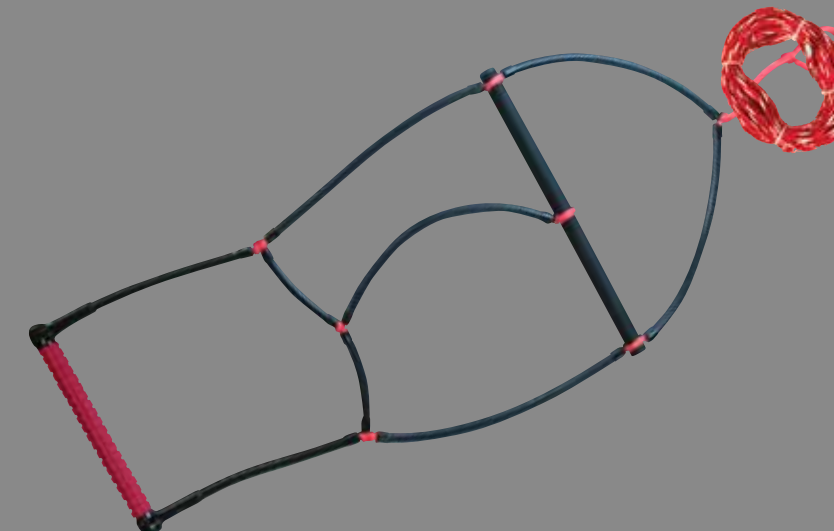
The O'Brien Boat/Dock Bungee is perfect for most boats 4000lbs. and under. The heavy duty stretch line helps keep your boat safe while also absorbing the shock on your cleats. There are foam floats at each end and two loops for a quick connection.

• Available in 4' (Blue/White) or 6' (Purple/Green).



8' SKI TOW HARNESS

If your boat does not have a center tow pylon or a center towing hook (most older I/O's, outboards, and pontoon boats), then you probably need a ski tow harness to equalize the pull of a skier/tuber/wakeboarder, etc. This is our least expensive option, and does its job quite nicely. 8" width, with two high-strength coated steel snap-hooks. A vinyl float to keep the rope out of the propeller. 12 Strand x 84 Filament Polypro Rope,



COMBO TRAINER ROPE

The O'Brien Combo Trainer Rope is perfect for teaching both adults and children the perfect form to get up on a pair of combo skis. This special handle is designed to keep both skis parallel while being pulled out of the water. The handle will slide off of the skis once the skier is out of the water and then the skier can ski away like a champion.

- 70' mainline w/ 5' combo trainer handle.
- 16 strand, 40 filament poly rope.
- Cross bar to keep your combos in perfect position.
- Detachable mainline.



FLOATING ROPES

Same features as the standard rope, but with the added benefit of rope with internal flotation! Rope features an internal layer of foam that keeps it on the surface for easier visibility.



8-SECTION FLOATING SKI COMBO

With 8 sections, this floating rope can be shortened to nearly any line-length you'll need. Begins at a total rope length of 75', but with 8 sections for skiing at 15', 22', 28', 32', 35', 38', and 40' off (or line lengths of 75', 60', 53', 47', 43', 40', 37' and 35'). A 12" wide aluminum-core EVA handle on a 5' detachable bridle section. The rope is made of top-quality 16-strand, 40 filament polypropylene rope.

4-SECTION FLOATING POLY-E WAKE COMBO

The ultimate first wake rope, great for wakeboarding and kneeboarding. Comfortable 15-inch EVA prop grip 55' low-stretch poly-e mainline with 3 5' sections for 55', 60', 65' & 70' line-lengths.



5-SECTION FLOATING SKI COMBO

This floating ski rope begins at a total rope length of 75', but with 5 sections for skiing at 15', 22', 28', or 32' off (or line lengths of 75', 60', 53', 47', or 43'). A 12" wide aluminum-core EVA handle on a 5' detachable bridle section. The rope is made of top-quality 16-strand, 40 filament polypropylene rope. One of the most versatile floating ropes in our line.



2-PERSON FLOATING TUBE ROPE

This floating tube rope is best for 1 and 2 person tubes, up to 340 pounds maximum total rider weight. 60' length, with an average 2,375 lbs. break strength.

• Available in **Yellow**, **Blue**, or **Orange**.



4-PERSON FLOATING TUBE ROPE

This is our most popular floating tube rope, rated for up to 4 riders, 680 pounds maximum total rider weight. 60' length, with an average break strength of 4,100 pounds.

• Available in **Yellow**, **Blue**, or **Orange**.



6-PERSON FLOATING TUBE ROPE

This floating tube rope is 60' in length and 3/4" in diameter, rated for 1,020 pounds (6 riders) maximum total rider weight. 6,100 pounds average break strength.

• Available in **Yellow**, **Blue**, or **Orange**.

1-SECTION FLOATING COMBO

Just need a good quality ski rope? This is our simplest answer, but still made with the quality for which O'Brien is famous. A 12" wide aluminum-core Sure-Grip handle on a 5' detachable bridle section. The 70' mainline rope (for a total rope length of 75') is made of top-quality 16-strand, 40 filament polypropylene rope.



2-SECTION FLOATING COMBO

This is our least expensive "all-purpose" rope. A 12" wide aluminum-core Sure-Grip handle on a 5' detachable bridle section is combined with a 70' mainline (for 75' total rope length) with a takeoff loop at 28' off (for a 47' length). 75' is the standard length for skiing, while 47' is a good length for wakeboarding or kneeboarding, making this a do-it-all rope. The rope is made of top-quality 16-strand, 40 filament polypropylene rope.



1-SECTION FLOATING DEEP-V COMBO

A fantastic rope for teaching or assisting anyone struggling to do a deep-water slalom start. The bridle section is vinyl coated to protect the rope from ski abrasion. Just rest your ski inside the DEEP-V, and let the V hold the ski straight. Makes deep water starts vastly easier. Once you're up, the rope simply pulls out from underneath the ski and performs just like a regular ski rope. Crossbar in bridle section keeps ski tip in perfect starting position and protects against crunched knuckles. A 70 foot mainline with a 5 foot detachable DEEP-V bridle section and a 12-inch wide aluminum-core handle. 16 strand, 40 filament polypropylene rope construction.



8' FLOATING SKI TOW HARNESS

If your boat does not have a center tow pylon or a center towing hook (most older I/O's, outboards, and pontoon boats), then you probably need a ski tow harness to equalize the pull of a skier/tuber/wakeboarder, etc. This is our least expensive option, and it does its job quite nicely. 8' width, with two high-strength coated steel snap-hooks. A vinyl float to keep the rope out of the propeller. 12 Strand x 84 Filament Polypro Rope,



GLOVES

& BAGGS

COMPETITOR X GRIP

SIZES: XS / SM / MD / LG / XL / XXL

- ▶ Full-fingered design
- ▶ Sticky fingers palm for enhanced grip
- ▶ Amara panels for wear resistance
- ▶ Neoprene backhand with cinch for a comfortable fit
- ▶ Pre-curved fingers for less fatigue
- ▶ Wide wrist strap holds glove secure
- ▶ Backhand cinch adjusts for a custom fit



PRO SKIN

SIZES: XS / SM / MD / LG / XL / XXL

- ▶ Full-fingered design
- ▶ Amara construction provides wear resistance
- ▶ Pre-curved fingers for less fatigue
- ▶ Wide wrist strap holds glove secure
- ▶ Backhand tab assures a custom fit



SKI SKIN 3/4

SIZES: XS / SM / MD / LG / XL / XXL

- ▶ 3/4 finger cut
- ▶ Amara panels for wear resistance
- ▶ Stretch mesh nylon backhand
- ▶ Sturdy wrist strap for a secure fit



PRO SKIN 3/4

SIZES: XS / SM / MD / LG / XL / XXL

- ▶ 3/4 Finger cut
- ▶ Amara provides wear resistance
- ▶ Pre-curved fingers for less fatigue
- ▶ Wide wrist strap for a secure fit
- ▶ Backhand tab assures a custom fit



SKI SKIN

SIZES: XS / SM / MD / LG / XL / XXL

- ▶ Full-fingered design
- ▶ Amara panels for wear resistance
- ▶ Stretch mesh nylon backhand
- ▶ Sturdy wrist strap for a secure fit



MEN & LADIES' GLOVE SIZING



Selecting the Correct Glove Size

Place your hand on a flat surface and measure the widest part of the hand as shown in the illustration (not including the thumb). If your hand is between sizes, go up to the next full size.

2XS - 2 1/2"	XS - 2 3/4"	S - 3 1/8"
M - 3 1/2"	L - 3 3/4"	XL - 4 1/8"

*Note: Use the sizing chart below for Lady Finger gloves.

QUAKER BACKPACK

- ▶ New slim design
- ▶ Felt lined sunglasses pocket
- ▶ Shock absorbing shoulder straps
- ▶ Felt lined computer side pocket
- ▶ Fits most 17" wide screens
- ▶ Felt lined ipad sleeve



WAKEBOARD TRAVELER

- ▶ This traveler case has a built in extension to fit a variety of board sizes.



WAKEBOARD CASE (PADDED)

- ▶ Perfect for the plane or a weekend getaway, the wakeboard case is easy to lug around with multiple handles and straps. Holds a variety of boards and gear.



WAKEBOARD CASE (UNPADDED)

- ▶ The unpadded wakeboard bag is a perfect way to protect your board and store your rope, handle, shoes and anything else you'd like to keep together



KNEEBOARD CASE

- ▶ Keep your board protected in this heavy duty polyester bag. Full length zipper makes for easy entry and inside straps hold that board right where you want it.



TEAM SLALOM ROLLER

- ▶ Convenient, fully vented bag makes for an easy trip to and from the airport to the boat. Rolling wheels makes your trips easy. Velcro straps fit up to 69" (175cm) of ski securely.



SLALOM TRAVEL CASE

- ▶ A fully padded box bag with room for ski, bindings and plenty of accessories. Velcro straps fit up to 69" (175cm) of ski securely.



SIZED SLALOM CASE

- ▶ Contoured and sized to your slalom ski.
Small (66"/167cm) Medium (68"/173cm) Large (70"/178cm)



COMBO CASE

- ▶ Convenient, fully vented bag makes for an easy trip to and from the boat.



WAKESURFER CASE

- ▶ A padded case for your wakesurfer to keep it safe and looking new. Full length zipper and shoulder strap for easy carrying.





BEACH TOWEL



10FT X 3FT BANNER



5FT X 3FT BANNER



ELECTRIC BOAT BLANKET

42" X 58" | 30 or 45 min. timer
Plugs into cigarette lighter



BAR MAT



WATERSPORTS RUBBER COASTERS 6 PACK



BOTTLE OPENER

WAKEBOARD RUBBER COASTERS 6 PACK



TEAM HOODY

ZIP HOODY

LADIES HOODY



OLD SCHOOL METAL SIGN



OVAL METAL SIGN



FLOATING KEY CHAIN



COOZIE BLUE/GREEN



STADIUM CUP



CERAMIC MUG



WATER BOTTLE



10" 3D BADGE



RIDER DOWN FLAG



DIECUT STICKER PACK (2 PIECE SKI OR WAKE)



STICKER PACK (50 PIECE SKI & WAKE)



DOG LEASH
Soft machined EVA grip handle with braided rope.



LOGO HAT



TEAM HAT



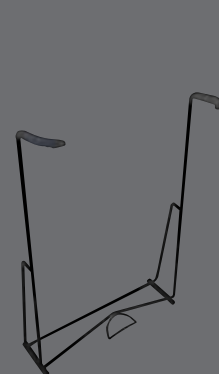
BLACK SANDALS



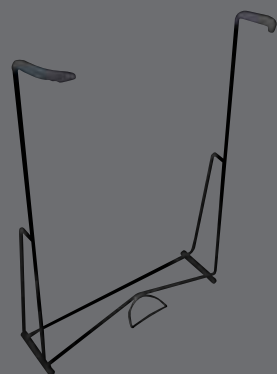
BROWN SANDALS



15' FEATHER FLAG



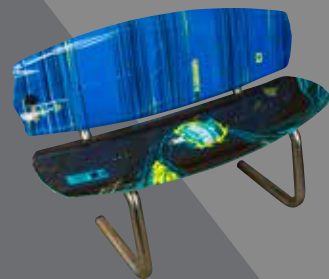
WAKEBOARD/WAKESURFER STAND



SUP STAND



WAKEBOARD HANGER



BENCH KIT (BOARDS NOT INCLUDED)



PASSAGE TEE



SLALOM TEE



GHOST TEE



WAVE TEE



OUR WORLD TEE



CORP TEE



LOGO TEE



PALM TEE



LADIES TEE



BRUSH TEE



O'BRIEN
WATER SPORTS

1-800-6-OBRIEN 7925 Braden Pl SE
www.obrien.com Snoqualmie, WA 98065



PHOTOS: Pete Surrette, Scott Dutty, Sean O'Brien, Ross Dantonio, Molly Dutty, Jason Jakober