

# Garment Rental Solutions

Fully managed uniform programs committed to  
complete transparency and Genuine Service Excellence



 **AbsorbTech**®  
Cleaner, safer solutions for industry



Shirts

8

Pants

12

Coverings

14

Flame  
Resistant

18

Jackets &  
Coveralls

22

Customization

24

## Icon Guide

**LONG** ↓

Long lengths available

**W**

Women's style

**TOUCHTEX™**

TouchTex™ Technology with superior color retention, soil release and wickability

**CAT2**

Compliant to PPE Category 2, as defined by NFPA 70E

**COOLTOUCH® 2**

Cool Touch® 2 fabric made from Tecasafe® Plus, a flame-resistant fabric that provides comfortable and durable protection

**ComforTouch®**

Cotton's comfort, nylon's durability. 88% cotton / 12% nylon blend provides long-lasting protection





## Exceptional people dedicated to you

Our full-service, team management approach will service your facility with cleaner, safer solutions. You will realize significant savings through a program that fits your budget and your facility's needs. Our program stands out because of our exceptional people. Here's why:

- **Award-winning training program** - All employees become certified in Genuine Service Excellence or Production Excellence. Our training program was recently ranked with Coca Cola and UPS as one of the world's best.
- **Experienced and team-oriented** - Our service team boasts an average tenure of over 15 years. We have a culture of working as a team to service your account.
- **Safety first** - We follow strict adherence to your facility's safety requirements and take pride in our awards recognizing ITU AbsorbTech as a leader in safety.





# We manage all the details

We care about your uniform program down to the smallest detail. Our Genuine Service Excellence team will customize a program to meet your image and safety needs.

- ✓ **Sizing** - We size your employees by try-on method to ensure proper fit. Pants will be hemmed to length.
- ✓ **Training** - We train wearers how to use bag racks, request a repair, and more.
- ✓ **Installation** - We install lockers, labels and program signs.
- ✓ **Cleaning and delivery** - We launder garments and deliver to individual lockers or to designated drop point at your facility.
- ✓ **Garment repair and upgrades** - We proactively mend, repair and upgrade garments, even if your employees do not identify a needed repair.
- ✓ **Adding and removing wearers** - We proactively review your employee list and promptly add/remove wearers as needed.
- ✓ **Customer Quality Visits** - We visit your facility on a regular, scheduled basis to ensure complete transparency of the program.
- ✓ **Transparent Reporting** - We provide a StraightUp!™ Garment Report detailing usage, service turnaround and cost details.
- ✓ **Customer Response Center** - Customer Response Center members are empowered to answer questions and take care of your requests. Call 888-729-4884 or email [CRC@ITUAbsorbTech.com](mailto:CRC@ITUAbsorbTech.com).





# Advanced Garment Tracking

We recognize that getting repairs completed quickly, and delivering the right garment to the right wearer every time is crucial to the success of a garment rental program.

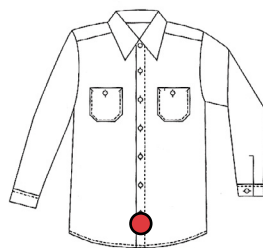
Our comprehensive utilization of Radio Frequency Identification (RFID) - the most advanced technology available for garment tracking and reporting - has streamlined our processing and allows us to provide the most efficient and accurate garment program available.

You benefit from:

- Quick turnaround
- Accurate service
- Garments mended faster
- Advanced garment tracking and reporting

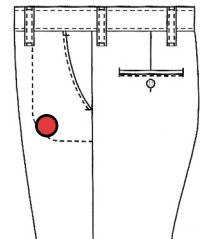
## RFID Placement

RFID chips are completely safe for wearers and are placed in the garment with comfort in mind.



### Shirt

Behind button/  
snap placket



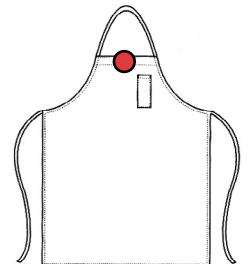
### Pant

Inside  
waistband



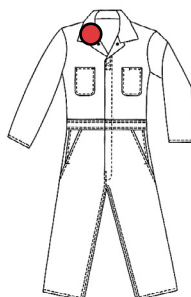
### Polo

Inside bottom  
center



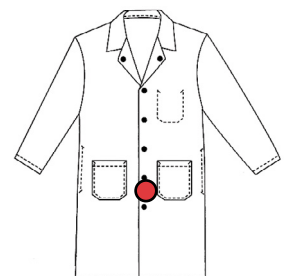
### Apron

Inside  
top center



### Coveralls

Under  
right collar



### Lab Coat

Behind button/  
snap placket





## Complete transparency

Complete transparency is our promise to handle all transactions and interactions in plain sight. It means delivering honest, complete, and regular communication to ensure you get the best value for your program investment.

- ✓ We actively **review your employee roster** so you are not paying for employees that left the company.
- ✓ We physically show you **damaged garments** for your authorized approval.
- ✓ We provide a **list of employees** that are not turning in their garments regularly.
- ✓ We clearly show any applicable **loss and damage charges** on your invoice.
- ✓ We schedule **regular, ongoing visits** with you to review the value and effectiveness of your program.
- ✓ We review **personalized reports** that show all program costs, change requests, and usage.

## StraightUp!™ Garment Report

This exclusive, personalized report provides a detailed summary of your entire garment program, making it easy to control and monitor your costs.

StraightUp!™ Garment Report		AbsorbTech® <small>Chemical color solutions for industry</small>	
912345-001 SAMPLE ACCOUNT			
Time Period: Qtr 1 2013 - Qtr 3 2013			
<b>SUMMARY OF GARMENT PROGRAM CHARGES</b>			
Basic garment charges: COG, COG, excluding supplemental pricing			
Standard per inventory			
	Actual	Normal	
Rental	\$0	\$120	
COG Laundering			
Direct Sales			
<b>TOTAL GARMENT</b>			
<b>SUMMARY OF GARMENT CHARGES</b>			
Garment rental is our standard list price.			
Embroiders	\$0	\$194	
Prep			
Manual Loss	\$0	\$17	
Credits/Loss	\$0		
Damage			
Voided Damage			
Loss			
<b>TOTAL SUPPLEMENTAL</b>	\$5	\$17	
<b>SUMMARY OF GARMENT CHARGES</b>			
Total value of investment program is included in your StraightUp! pricing - no additional fees or costs are incurred by you.			
	\$-10	\$0	
ADD EMPLOYEE			
GARMENT UPGRADE			
INCREASE INVENTORY	11	\$0	
REPLACE-ITU/ABSORBTECH	2	\$0	
SIZE CHANGE	11	\$300	
STYLE CHANGE	7	\$210	
	<b>74</b>	<b>\$1,931</b>	



“ We have been doing business with ITU AbsorbTech for 7 years and have been extremely happy with their products and service.

**They are a dream compared to the uniform companies we used prior to them.** If we encounter a problem, which is rare, it is corrected quickly. Their pricing is competitive but I find **the biggest value comes from not having to worry** about and constantly follow up on issues, as I had to do with the companies we used prior to ITU AbsorbTech.”

**Patricia Miller**  
Baker's Quality Pizza Crusts, Inc.  
Waukesha, Wisconsin





Size: L-20  
RED KAP  
MADE IN  
AUSTRALIA  
100% COTTON  
WASHABLE  
100% COTTON  
WASHABLE

Mitch

GREASE CREW





# Ripstop Crew Shirt LONG

**Short sleeve (SY20)** - Sizes S - 3XL, Tall L - 2XL

**Long sleeve (SY10)** - Sizes S - 3XL, Tall L - 2XL

- 4.25 oz. Ripstop, 65% Polyester / 35% Cotton
- 75% stronger than poplin work wear fabric
- Concealed, no-scratch, button-front placket
- Soil release and moisture wicking
- Color retention pocket: button-thru right chest pocket, left chest pocket with double pencil stall
- Utility pocket on left sleeve for smaller objects



Watch a video demo!

BC black body / charcoal contrast

CG charcoal body / grey contrast

BR black body / red contrast

CR charcoal body / royal blue contrast





## Industrial Solid Work Shirt **TOUCHTEX™** **LONG**

**Short sleeve (SP24)** - Sizes S - 4XL (BY), S - 5XL (GY, CH), S - 6XL (NV, MB, LT)

**Long sleeve (SP14)** - Sizes S - 4XL (BY), S - 6XL (NV, MB, GY, CH, LT)

- 4.25 oz. Poplin, 65% Polyester / 35% Cotton
- Two-piece, lined collar with sewn-in stays
- Two button-thru hex-style pockets with left pencil stall



## Cotton Work Shirt **LONG**

**Short sleeve (SC40)** - Sizes S - 4XL

**Long sleeve (SC30)** - Sizes S - 5XL

- 5.25 oz. Twill, 100% Cotton
- Two-piece, lined collar with no stays
- Six-button front with button at neck
- Two button-thru hex-style pockets with left pencil stall
- Separate two-piece yoke



## Industrial Stripe Work Shirt **TOUCHTEX™** **LONG**

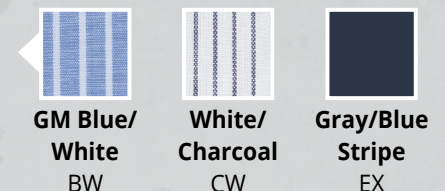
**Short sleeve (SP20)** - Sizes S - 6XL (CW, BW)

**Long sleeve (SP10)** - Sizes S - 6XL (CW, BW)

**Short sleeve (SP24)** - Sizes S - 5XL (EX)

**Long sleeve (SP14)** - Sizes S - 5XL (EX)

- 4.25 oz. Poplin, 65% Polyester / 35% Cotton
- Two-piece, lined collar with sewn-in stays
- Six-button front with button at neck
- Two button-thru pockets with bartacked pencil stall in left pocket





## Certified Service Technician Shirt **TOUCHTEX**

**Short sleeve (SY24GM)** - Sizes S - 4XL  
**Long sleeve (SY14GM)** - Sizes S - 3XL

- 4.25 oz. Performance Woven, 65% Polyester / 35% Cotton
- Convertible collar with sewn-in stays
- Slimline left chest pocket
- Concealed, no-scratch button front placket
- Straight bottom hem with side vents
- Embroidered logos on chest pocket



**Black with  
Gray Panels**  
BR



## Micro-Check Work Shirt **TOUCHTEX** **LONG**

**Short sleeve (SP24)** - Sizes S - 3XL  
**Long sleeve (SP14)** - Sizes S - 3XL

- 65% Polyester / 35% Cotton
- Two-piece, lined collar with sewn-in stays
- Seven tortoise shell buttons
- Two button-thru hex-style pockets with left pencil stall
- Long lengths available (SP14 only)



**Khaki /  
Black**  
KB



**Blue /  
Charcoal**  
GB



## Enhanced Visibility Industrial Work Shirt

**Short sleeve (SP24EN)**  
**Long sleeve (SP14EN)** - Sizes S - 4XL

- 4.25 oz, 65% Polyester / 35% Cotton
- Two-piece, lined collar with sewn-in stays
- Button-thru hex-style pockets
- Pencil stall in left chest pocket
- Double-turned fishtail hem helps prevent unraveling and appears professional when left untucked
- 2 1/2" yellow-silver-yellow enhanced visibility trim around body below pockets, down both sleeves and across back shoulder to shoulder.



**Navy with  
yellow visibility  
trim**

**TOUCHTEX™**





# NEED NEW PICTURE

## Executive Oxford Dress Shirt **TOUCHTEX™**



**Short sleeve (SR60)** - Sizes 14.5 - 22.5

**Long sleeve (SR70)** - Sizes 14.5 - 22.5

- 4.5 oz. Yarn-dyed Oxford, 60% Combed Cotton / 40% Cotton
- Soft, easy care finish
- Two-piece, lined, banded button-down collar
- One hemmed, spade-style pocket with angled bartacks
- Seven button front, box-pleated back
- Two-piece yoke
- Tailored sleeve placket



**Light Blue**  
LB

## Women's Pocketless Work Shirt **TOUCHTEX**

**Short sleeve (SP25)** - Sizes S - 3XL

- 4.25 oz. Performance Woven, 65% Polyester / 35% Cotton
- Six gripper front
- Two-piece, lined collar, sewn-in stays
- Stitched-down front
- Pre-cure durable press with soil release and wickable finish



**Light Blue**  
LB



**White**  
WH



## Pocketless Work Shirt **TOUCHTEX** **LONG**

**Short sleeve (SP26)** - Sizes S - 6XL

**Long sleeve (SP16)** - Sizes S - 5XL

- 4.25 oz. Poplin
- 65% Polyester / 35% Cotton
- Two-piece convertible collar with sewn-in stays and stainless steel gripper closure
- Seven-gripper front



**Medium Blue**  
MB



**Navy**  
NV



**White**  
WH





# Women's Snag-Proof Polo

**No Pocket (CS413)** - Sizes S - 4XL

- 6.6-ounce, 100% snag-proof polyester
- High-performance polo defies snags, resists wrinkles, fights odors and wicks moisture
- Double-needle stitching throughout
- Tag-free label
- Flat knit collar
- 3-button placket with dyed-to-match buttons
- Set-in, open hem sleeves
- Side vents



Black



Navy



Royal



Red



# Snag-Proof Polo

**No Pocket (CS412)** - Sizes S - 4XL, Tall L - 4XL

**Pocket and tipping (CS415)** - Sizes S - 4XL

- 6.6-ounce, 100% snag-proof polyester
- High-performance polo defies snags, resists wrinkles, fights odors and wicks moisture
- Double-needle stitching throughout
- Tag-free label
- Flat knit collar
- 3-button placket with dyed-to-match buttons
- Set-in, open hem sleeves
- Side vents



**No pocket color options:**



Black



Charcoal



Navy



Royal



Red

**Pocket and tipping color options:**



Black /  
Smoked  
Gray



Charcoal /  
Light Gray



Dark Navy /  
Smoked  
Gray

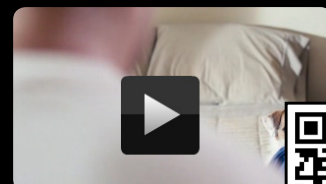


Royal /  
Black




Red /  
Black

Watch a video demo  
of the Snag-Proof Polo!





A male mechanic with short dark hair and a goatee is shown in profile, leaning over a car. He is wearing a grey and black long-sleeved shirt and dark grey cargo pants. He is working on the car's interior or engine area. The background is a dark, industrial garage setting with various mechanical parts and tools visible. The lighting is dramatic, highlighting the mechanic and his work area.

Introducing the only  
**made-to-work-on-cars**  
pants in the automotive industry.  
Exclusively created by Red Kap,  
these pants are garage tested  
and loaded with features meant  
for the auto industry.



DONE RIGHT.



# Performance Shop Pant

**Pant (PT2A) - Sizes 30 - 50**

- 8 oz. Canvas, 54% Polyester / 42% Cotton / 4% Spandex
- Concealed, no-scratch button closure at waistband
- Soil release and color retention
- Two jean-style front pockets, two oversized hip pockets, no-scratch cargo pocket on left leg and unique double-pocket design on right leg



Watch a  
video demo!



Black

Navy

Charcoal



# Durakap Industrial Pant **TOUCHTEX™**



**Pant (PT20)** - Waist sizes 28 - 60

- 7.5 oz. Twill
- 65% Polyester / 35% Cotton
- Traditional easy fit
- Jean-style waistband with button closure for a comfortable fit
- Slack-style front pockets and two set-in hip pockets



Navy



Charcoal



Black



White

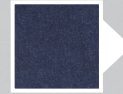
## Industrial Work Jean

**Pant (PD54)** - Waist sizes 28 - 54

- 13.75 oz. Heavyweight Denim, 100% Cotton
- Traditional rise sits at the natural waist
- Slim through the seat and thigh
- Slimmer leg opening that fits over work boots
- Prewashed



Prewashed  
Black



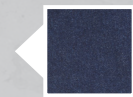
Prewashed  
Indigo



## Industrial Loose Fit Dungaree

**Pant (PD80)** - Waist sizes 28 - 50

- 13.5 oz. Heavyweight Denim, 100% Cotton
- Two deep scoop front pockets, two oversize hip pockets, double rule pocket on right leg, hammer loop on left leg
- Loose fit sits slightly below the natural waist and has a loose seat and thigh with a wider leg opening
- Prewashed



Prewashed  
Indigo



# Wrinkle-Resistant Cotton Work Pant

**Pant (PC20)** - Waist sizes 28 - 56

- 8.5 oz. Twill, 100% Wrinkle-resistant Cotton
- Easy fit
- Jean-style waistband with button closure
- Slack-style front pockets and two set-in hip pockets



Navy



Charcoal



# Pleated Work Pant **TOUCHTEX**

**Pant (PT32)** - Waist sizes 28 - 52

- 8 oz. Twill, 65% Polyester / 35% Cotton
- Classic silhouette with double front pleats
- Jean-style waistband with button closure
- Slack-style front pockets and set-in hip pockets



Navy



Charcoal



Black

# Industrial Cargo Pant **TOUCHTEX**

**Pant (PT88)** - Waist sizes 28 - 44

- 8 oz. Twill
- 65% Polyester / 35% Cotton
- Updated utility-style cargo pants offer a relaxed fit
- Slack-style front pockets and two set-in hip pockets
- Two bellow cargo pockets with pocket flap and button closures



Navy



Black



Khaki







W

## Women's Work NMotion® Pant

**Pant (PZ33)** - Sizes 2 - 24

- 7.5 oz. Stretch Twill, 80% Polyester / 20% Cotton
- Technologically crafted polyester moves the way you do without looking stretched out at the end of the day
- Heavy-duty brass zipper, button closure
- Memory stretch yarns for flexibility
- Durable press and wickable finish
- Two front top slash drop pockets, one right rear pocket, darts over hip pocket on right and left for better fit



Black



Navy

## Women's Half-Elastic Work Pant **TOUCHTEX**

**Pant (PT59)** - Sizes 4 - 32

- 8 oz. Twill, 65% Polyester / 35% Cotton
- Soft hand twill
- Hook-and-eye closure
- Two front pockets and no hip pockets
- Straight leg



White



Navy



W





What I like about ITU AbsorbTech is that we have had the same service person since we started. We get

**exceptional customer service**

and they follow through on all our needs down to the smallest detail. We appreciate ITU AbsorbTech is family owned, as we are, as they make you feel like a valued customer.



**Mike Fitzgerald**  
Zimbrick Acura Volkswagen  
Madison, Wisconsin





Ross

Cruiser

Xtreme  
TRUCK AND AUTO DE





## Universal Shop Coat

**Shop Coat (1751)** - Sizes 36 - 58

- 7.5 oz. Pre-cure durable press
- 65% Polyester / 35% Cotton
- Back vent
- Side vent openings
- Two lower pockets
- Five concealed gripper front
- Two breast pockets with pencil stall in left
- One-piece, notched lapel with topstitched collar
- 43.75" length



Navy  
NV

## Shop Coat

**Shop Coat (KT30)** - Sizes 36 - 58

- 7.25 oz. Twill, 65% Polyester / 35% Cotton
- Five concealed grippers
- One-piece notched lapel
- Two chest pockets and two lower pockets
- Side vent openings and back vent
- 43.75" length (based on size 42)



Postman  
Blue  
PB



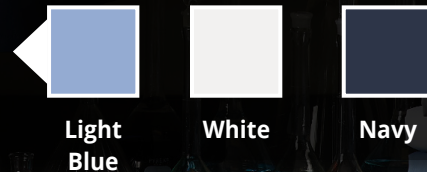




## Lapel Counter Coat **LONG**

**Counter Coat (KP10)** - Sizes: XS - 4XL (WH), S - 3XL (LB, NV)

- 5 oz. Performance Blend Poplin, 80% Polyester / 20% Combed Cotton
- One-piece, lined collar with notched lapel
- Left breast pockets and two lower pockets
- Bartacked pencil stall
- Blazer styling with rounded front hem
- Long lengths available (white only)



## Specialized Lapel Counter Coat

**Counter Coat (KP16)** - Sizes S - 3XL

- 5 oz. Performance Blend Poplin
- 80% Polyester / 20% Combed Cotton
- One-piece, lined collar with notched lapel
- Two lower outside pockets
- Square-hemmed front
- 30" back length on size medium

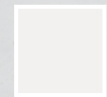


## Lab Coat **LONG**

**Five-Button (KP14)** - Sizes 32 - 60 (WH), 36 - 54 (LB), 36 - 56 (NV)

**Five-Gripper (KP18)** - Sizes S - 4XL (WH)

- 5 oz. Performance Blend Poplin
- 80% Polyester / 20% Combed Cotton
- Left chest pocket with pencil stall and two lower pockets
- Lined notched lapel collar
- Side vent openings
- Princess seams on front and back (KP15)
- 41.5" back length on all sizes
- Long lengths available (KP14NV, KP14WH, KP18WH)



**White**  
WH



**Navy**  
NV



**Light Blue**  
LB



## Gripper-Front Butcher Coat with Knif Cuffs

**Butcher Coat (KS60)** - Sizes S - 5XL

- 100% Polyester
- Six-gripper front, knit cuff, and no side vents
- Pocketless design
- One piece, notched lapel
- This garment is buttonless in accordance with food processing and healthcare regulations.



White



## Collarless Butcher Wrap

**Wrap (WP10)** - Sizes S - 4XL

- 100% Polyester
- Reversible self-tie closure
- Three-quarter sleeves
- Interior left chest pocket and two exterior lower pockets
- 37" back length on size medium



Royal  
Blue

## Gripper-Front Butcher Coat

**Butcher Coat (KT18)** - Sizes S - 3XL

- 65% Polyester / 35% Cotton
- Traditional fit with six-gripper front closure
- Side vent openings
- Interior left chest pocket
- Exterior lower pockets
- 44.75" back length on size medium



White





## Tech Coat

**Tech Coat (KK28)** - Sizes S - 4XL

- 4 oz. Warp Knit
- 94% Texturized Polyester / 6% Carbon Suffused Nylon
- Six-gripper front keeps
- Anti-static material
- One-piece, notched lapel
- Left breast pocket, two lower pockets
- MEETS ESD STM 2.1-1997 TEST METHODOLOGY



**Electric  
Blue**



## Denim Safety Apron

**Apron (7423MT)** - One size

- 100% Cotton
- Safety snaps on neck and waist
- One top swing micrometer pocket
- One lower pocket



**Navy  
Denim**





## Dairy Apron

### Apron (3000) - One size

- Polyester/Cotton Twill
- Full-size coverage
- Extra long self-ties to withstand everyday use
- 30" W x 34" L



Black



Burgundy



Navy



White



## Dairy Waist Apron

### Apron (3050) - One size

- Polyester/Cotton Twill
- 28" W x 33" L



White

## Toolmaker's Apron

### Apron (AC20) - One size

- 8.75 oz. unbleached drill 100% cotton
- Two large, deep bottom pockets
- Top ruler or pencil pocket
- One swing micrometer pocket
- Brass grommets
- Separate tie tapes



Natural







**Bulwark®FR**



## PPE Category 2 (CAT2) Garments

As the standard for electrical safety in the workplace, NFPA 70E is designed to help you properly identify potential workplace hazards, better understand and assess those risks, and determine which PPE is appropriate for each task. In the NFPA 70E 2015 edition, there are several significant updates, including a very important change in the terminology around PPE classifications.

Specifically, the industry's long-used HRC (Hazard Risk Category) designation has been eliminated and replaced by the term "PPE Category." You will also notice that "HRC 0" has been removed from the table of arc-related clothing requirements. Please note that PPE CAT1, CAT2, CAT3 and CAT4 (formerly HRC1,

HRC2, HRC3 and HRC4) will maintain the same requirements and minimum arc ratings as they had before.

## Safety & Care for FR Garments

Each type of Flame-Resistant fabric requires special safety and care considerations. For example, garments cannot be treated with chlorine bleach or liquid non-chlorine bleaches, starch, fabric softeners, and other home laundry additives. When washed by the prescribed industrial laundry procedures, the durability of the flame resistance of these garments is guaranteed for the useful wear life of the garment.

We adhere to strict process standards to ensure your garments are laundered and repaired properly every time.

**CAT2**

*The FR garments in our rental program meet the requirements of PPE Category 2 (CAT2) with a required minimum ATPV of 8 cal/cm2 in the NFPA 70E 2015 Edition.*

**NFPA  
2112**

*The FR garments in our rental program meet the requirements of NFPA 2112 Standard of Flame resistant garments for Protection of Industrial Personnel Against Flash Fire, 2012 Edition.*

## EXCEL FR® Work Shirt

**CAT2**

*ComforTouch®*

### Work Shirt (SLW2) - Sizes S - 3XL

- Flame-resistant, 7 oz. (235 g/m<sup>2</sup>)  
88% Cotton / 12% Nylon Arc
- Two-piece, lined collar
- Two chest pockets with button flap closures and sewn-in pencil stall
- Hemmed front with button closure
- One-piece, lined cuff with button closure
- Sleeve vents

Navy

ATPV = 8.6



Light Blue

ATPV = 8.6



Khaki

ATPV = 8.6







## Dress Uniform FR Shirt

CAT2

COOLTOUCH® 2

### Work Shirt (SMU) - Sizes S - 3XL

48% modacrylic, 37% lycocell, 15% aramid (khaki/light blue)  
45% modacrylic, 35% lycocell, 20% aramid (navy)

- Flame-resistant, 7oz. (235 g/m<sup>2</sup>)
- Gusset side seam for ease of movement
- Banded, topstitched, button down collar
- Two chest pockets with button flap closures and sewn in pencil stall
- Placket front with button closure
- Tailored sleeve placket
- Topstitched cuff
- Straight back yoke



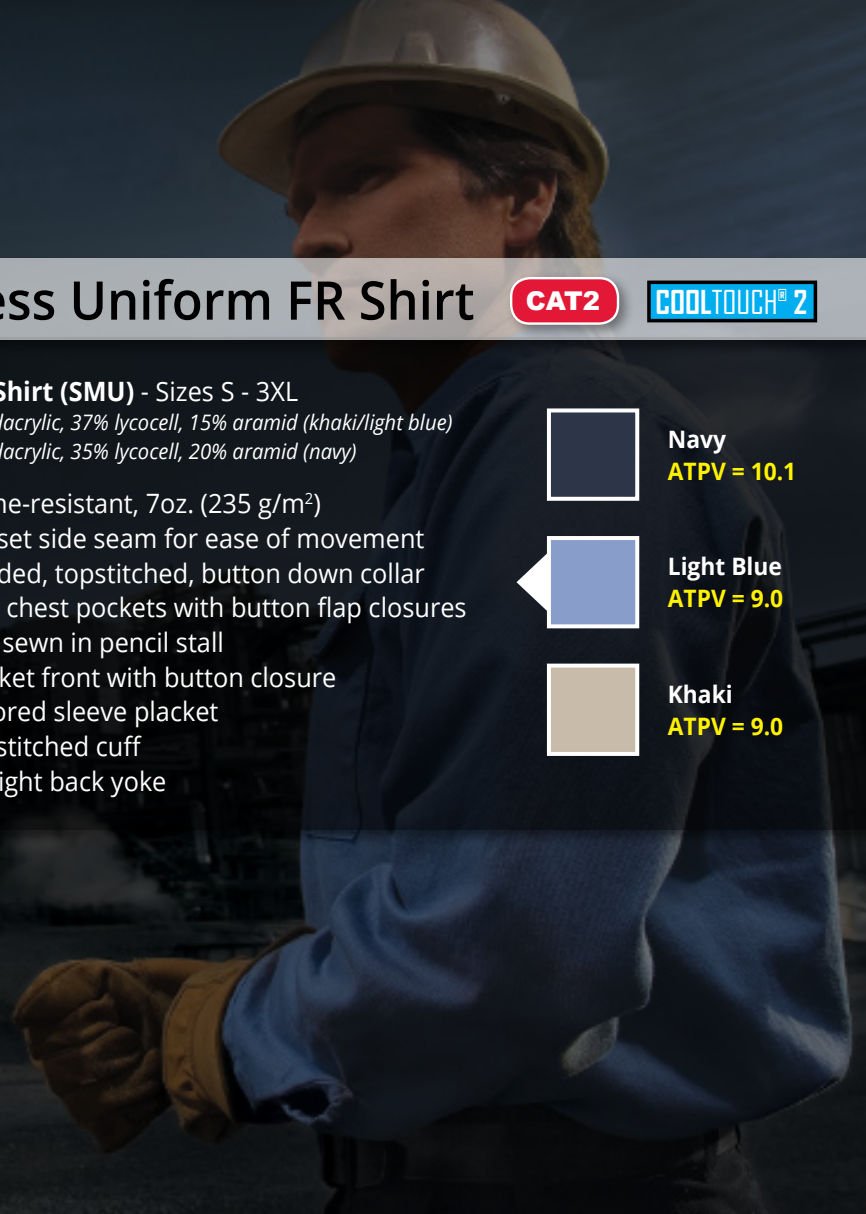
Navy  
ATPV = 10.1



Light Blue  
ATPV = 9.0



Khaki  
ATPV = 9.0



## Spentex® Men's Work Shirt

CAT2

### Work Shirt (162790) - Sizes L - 3XL

- Flame Resistant, 6 oz. Spentex® NGI 2/1 Twill
- Fabric and trims are NFPA 2112 UL Certified
- Button-down collar
- Seven button placket
- Double button down pockets



Navy  
ATPV = 9.3



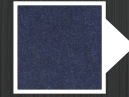


## EXCEL FR® Denim Jean **CAT2**



Jean (PEJ4DW) - Waist sizes 28 - 50 Even

- Flame-resistant, 14.75 oz. (500 g/m<sup>2</sup>) 100% Cotton Denim
- One-piece waistband with button closure
- Five jean style pockets
- Two-needle felled seam construction
- Soft pre-wash for comfort and look
- Classic fit - traditional, sits at the natural waist and has a slimmer leg opening that will fit over boots



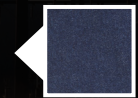
**Blue Denim**  
**ATPV = 20.7**



## EXCEL FR® Denim Dungaree **CAT2** **COOLTOUCH® 2**

Jean (PEJ8DW) - Waist sizes 28 - 50 Even

- Flame-resistant, 14.75 oz. (500 g/m<sup>2</sup>) 100% Cotton Denim
- One-piece waistband with concealed button closure
- Five jean style pockets
- Two deep scoop pockets
- Two oversized reinforced hip pockets
- Rule pocket on right leg with wrap-around utility pocket
- Hammer loop on left leg
- Utility loop on back under waistband
- Triple-needle felled outseam
- Pre-washed
- Loose fit sits slightly below the natural waist and has a loose seat and thigh with a wider leg opening



**Blue Denim**  
**ATPV = 20.7**







## EXCEL FR® Coverall

CAT2

ComforTouch®

LONG

**Coverall (CLB6)** - Sizes Regular 38 - 58, Tall 42 - 58

- Flame-resistant, 7 oz. (235 g/m<sup>2</sup>) Twill 88% Cotton / 12% Nylon
- Two-way concealed Nomex® taped brass break-away zipper, concealed snap at top of zipper and at neck
- Mandarin style stand-up, two-way safety collar
- Concealed snap closure on sleeve cuff
- Elastic waist inserts
- Two front swing pockets are topstitched and lined
- Two patch chest pockets with flaps and concealed snap closure
- Two patch hip pockets have single concealed snap closure
- Left sleeve pocket
- Deep-pleated action back
- Side vent openings with snap closure
- Rule pocket on right leg



Navy

ATPV = 8.6

## EXCEL FR® Work Pant

CAT2

ComforTouch®



**Work Pant (PLW2)** - Waist sizes 28 - 50 Even

- Flame-resistant, 9 oz. (305 g/m<sup>2</sup>) Twill
- 88% Cotton / 12% Nylon
- Interlined waistband with button closure
- Two slack style front pockets › Two set-in hip pockets
- Left hip pocket with button closure



Navy

ATPV = 12.2





# Work Pant

CAT2

COOLTOUCH® 2



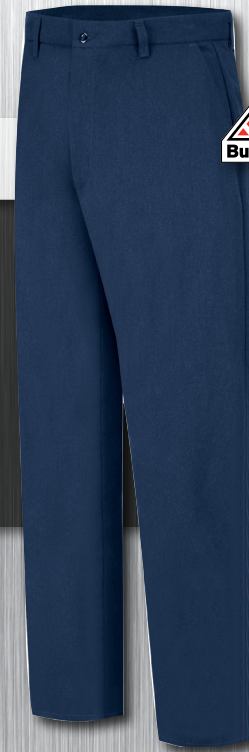
Pant (PMW2) - Waist sizes 28 - 50 Even

- Flame-resistant, 7 oz. (235 g/m<sup>2</sup>)
- 45% Modacrylic / 35% Lyocell / 20% Aramid
- Interlined waistband with button closure
- Two slack style front pockets
- Two set-in hip pockets >
- Left hip pocket with button closure



Navy

ATPV = 10.1



## About CAT2 Brand Offerings



Bulwark® is a trusted FR brand born on the frontlines of the Canadian oil fields more than 42 years ago. Bulwark tracks every stitch of every garment across 60 manufacturing touch points. From this obsessive devotion to information management comes total visibility of the entire supply chain. And an assurance that what bears the Bulwark patch makes good on its pledge.

Bulwark brings 42 unrivaled years of proven technical leadership and industry insight to better advance their common cause and ultimate calling. Saving lives.



Spentex® is a premium FR garment **offered exclusively by ITU AbsorbTech.**

- In heat and stress tests, Spentex® FR outperformed traditional FR fabrics.
- Spentex® FR has achieved the highest rating or resistance to UV degradation and maintains its shape and appearance over time.
- Spentex® FR has superb wicking capabilities and unsurpassed breathability.
- With a weight of only 6 oz., it is the most lightweight, highest performing FR garment on the market.





# Perma-Lined Panel Jacket LONG

## Panel Jacket (JT50) - Sizes S - 6XL

- 7.25 oz. Twill
- 65% Polyester / 35% Cotton
- Permanently lined with black 100% nylon taffeta
- Two-piece, topstitched collar with sewn-in stays
- Two lower inset on-seam pockets and utility pocket on left sleeve
- Hip-length

Navy  
NV



Charcoal  
CH







DONE RIGHT.





## Perma-Lined Solid Team Jacket **LONG**

**Team Jacket (JT38)** - Sizes S - 6XL

- 7.25 oz. Twill
- 65% Polyester / 35% Cotton
- Permanently lined with black 100% nylon taffeta
- Rib knit collar, cuffs and waistband
- Two lower inset slash pockets and utility pocket on sleeve
- Mid-length



**Navy**  
NV



**Charcoal**  
CH



## Universal Coveralls **LONG**

**Coveralls (161200)** - Sizes 34 - 60

- 10 oz. Fisher Cloth or 8.5 oz. Twill
- 100% Cotton
- Two upper patch pockets with concealed pencil pocket on left side, two hip patch pockets, two front swing pockets, ruler pocket on right side
- Two side access openings
- Banded waistband
- Sized to be worn over clothing
- Concealed rust-proof brass button front closure and cuff with vent

**Fisher Blue**  
740



**Navy**  
750

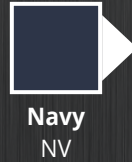




# Anti-Static Operations Coverall **LONG**

**Coverall (CK44)** - Sizes S - 3XL

- 4 oz. Warp Knit
- 98% Texturized Polyester / 2% Carbon Suffused Nylon
- Sized to be worn over clothes
- Military-style collar with gripper at neck
- Action back
- Two set-in pockets, chest pockets and patch hip pockets
- Rule leg pocket
- Short and long lengths available



# Twill Coverall **LONG**

**Chest Pockets (TC01)** - Sizes 34 - 62 (Navy, Charcoal)  
**No Chest Pockets (TC02)** - Sizes S - 3XL (White)

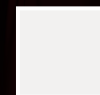
- 7.25 oz. Twill
- 65% Polyester / 35% Cotton
- Gripper at top of two-way brass zipper and lapel
- Two set-in front pockets
- Patch hip and chest pockets and rule leg pocket



**Navy**  
9750



**Charcoal**  
9725



**White**  
CT16WH



# Identity Options

## Icon Guide



In-house production. These options provide quicker turnaround



No minimum order required



Estimated cost comparison. No application charge for most emblems with StraightUp!™ pricing.



## Embroidered Name Tag

- **Embroidered name on stock emblem**
- Design Options: We stock white with navy or red border; Custom colors available
- Size: 1-1/2" x 3-1/2"
- Minimum order: None



## Color Xpress

- **Dye-printed logo on stock emblem**
- Design Options: White or colored background. Choose a logo, name or both.
- Stock designs available
- Size: Several size options
- Minimum order: None



## Special Text Emblem

- **Embroidered company name on stock emblem**
- Design Options: Limited color and complexity. Company names or title.
- Size: 2-1/2" x 4-1/2" or 2" x 4"
- Minimum Order: None



## Embroidered Emblem

- **Embroidered logo on stock emblem**
- Design Options: Made to customer's specifications to match logo.
- Multiple colors available.
- Size: Available in rectangle, oval and circle
- Minimum Order: None



## NTrans

- **Highly detailed, printed heat transfer**
- Design Options: Can be used for highly detailed work, great alternative to silk screening for direct purchase garments
- Size: 1" x 1" to 8" x 11"
- Minimum Order: 12



## Stock Emblem

- **Embroidered stock logo or American flag**
- Stock Options: Over 60 stock job title and company logos available, including major vehicle manufacturers. American flag also available.
- Size: 2" x 4" or 3" round (approximate)
- Minimum Order: None



## PennStitch

- **Embroidered, heat-sealed logo**
- Design Options: Stitched background typically matches the color of the shirt. Logo is embroidered on top of the background to blend nicely
- Size: 1-1/4" x 4"
- Minimum Order: 48





## Silk Screen Emblem \$\$\$

- **Silk screen inks on a polyester emblem**
- Design Options: Silk screen up to 4 colors, variety of background and border options
- Size: Available in rectangle, oval and circle. Multiple sizes.
- Minimum Order: 48



## Custom Broidery \$\$\$\$

- **Embroidered, heat-sealed, die-cut logo**
- Design Options: Look of direct embroidery with a logo or design. Not available for individual names
- Size: Laser cut to shape of logo
- Minimum Order: 50



## High Visibility Emblem \$\$\$\$\$

- **Made with fluorescent material and thread**
- Design Options: Available in orange and yellow background. Made to your specifications to match logo
- Size: Rectangle, oval or circle
- Minimum Order: 24



## PennEdge Emblem \$\$\$\$\$

- **Made with shirt fabric and stitched border**
- Design Options: Made to your specification to match logo
- Size: Available in rectangle oval and circle, multiple sizes
- Minimum Order: 50



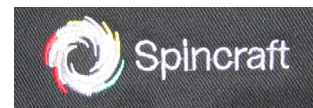
## Flame Resistant Emblem \$\$\$\$\$

- **Logo embroidered directly on garment**
- Design Options: White or colored background. Made to your specification to match logo.
- Size: Rectangle, oval or circle. Multiple sizes.
- Minimum Order: None



## Direct Embroidery \$\$\$\$\$

- **Embroidered stock logo or American flag**
- Stock Options: Over 60 stock job title and company logos available, including major vehicle manufacturers. American flag also available.
- Size: 2" x 4" or 3" round (approximate)
- Minimum Order: None





# Understanding the true cost of a uniform rental program

There are two ways a uniform rental company will typically quote you on their program. The first method is the most common in the uniform rental industry. It includes an inventory price or unit price, plus ancillary fees like damage, repairs, prep and emblem. The second way a uniform rental company will quote you is a total annual cost that includes all of the ancillary fees.

To explain it better, here's an example of two tire stores.

Store A advertises a brand and size of tires for \$80 each and Store B has the same tires for \$100 each. You need four of them and go to Store A and figure to save \$20 per tire. You sign the paperwork. When you get the bill, you are expecting  $\$80 \times 4 = \$320$  plus tax. As you review the bill, you see: \$4.00 per tire for valve stems, \$5.50 per tire to mount them, \$9.50 per tire to balance them, \$6.00 per tire road hazard warranty, \$5.00 tire disposal fee, \$10 shop supply fee (compressed air, mounting lubricant, etc.) Now your total bill is \$320 for tires plus \$130 extra charges = \$450 plus tax.

Happy with your new tires, but disappointed with the final total cost, you call Store B and tell them you would like to get the total installed cost of the exact same tires for your car. The Representative on the phone says the tires are \$100 each and there is a \$5.00 per tire disposal charge. "Total \$420, plus tax." You ask, "What about mounting, balancing, road hazard warranty, etc.?" The representative says, "It is included in the price of the tire. After all, the tires would not do you any good if they weren't put on the car."

ITU AbsorbTech is like Store B. We call it StraightUp!™ Billing.

	Typical National Laundry	ITU AbsorbTech StraightUp!™
Unit Price		
Service Fees		
Unit Price		
Unit Price		



Compare our products, processing and service to alternatives. We are confident you'll find our programs the **best** in the industry.

SorbIts® Oil Absorbents



Industrial Safety Mats



Ultra™ Shop Towels



Ultra™ Print Towels



Garments



First Aid



Cotton Roll Towels



Wet & Dust Mops



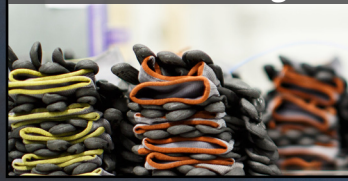
Office Floor Mats



Washroom Services



Glove Cleaning



Filter Bag Cleaning



## A Leader in the Industry

Locally, nationally and internationally recognized as a leader in safety, training and environmental practices.



## Family owned and operated since 1930

ITU AbsorbTech is owned and operated by the Leef family now in its third generation of ownership. Brothers Jim and David Leef are committed to continuing the company's historical tradition of Genuine Service Excellence, process and service innovation, and community involvement.



Customer Response Center (888) 729-4884

ITUAbsorbTech.com



Jim & David Leef  
Third Generation Owners