

Speech  
Pathology  
Australia

# 2015 Online Resource Guide





# ONCE IN A WHILE AN INNOVATION COMES ALONG THAT CHANGES EVERYTHING

*Say hello to the next generation of liquid thickeners from Precise.*

**Precise Thick-N INSTANT** is a liquid-based thickener concentrate that works INSTANTLY. The first of its kind, it's formulated with breakthrough research and development for superfast results.

**Precise Thick-N INSTANT** works its magic on almost all fluids, beverages both hot and cold, and even a wide range of supplements or medicinal additives. It's perfect for aged care facilities and other settings where you want to cut back on time, effort and overheads in providing care to residents or patients. In improving efficiency and being able to thicken a wider range of drinks you'll be improving quality of care.

## *Just Pump, Stir & Serve!*

- Measure out 100mL of fluid to thicken  
(Precise Thick-N INSTANT Single Serve)
- Add 1, 2 or 3 pumps of Precise Thick-N INSTANT
  - ☛ 1 pump for level 150 (*mildly thick*)
  - ☛ 2 pumps for level 400 (*moderately thick*)
  - ☛ 3 pumps for level 900 (*extremely thick*)
- Stir for 30 seconds and serve

## Simple. Convenient. Brilliant.

**Precise Thick-N INSTANT** is a completely standalone product as there's no preparation involved. It's the fastest, easiest, most convenient way to thicken fluids without having to fuss with measurements and powders. Forget the mess—with Precise you'll be up and ready to serve in seconds. And with simple, easy-to-follow instructions and premeasured pumps, you can be confident of providing the correct level of thickness every time.

We currently have a limited amount of FREE samples of **Precise Thick-N INSTANT**. If you want to be one of the first to try out this fantastic product then CALL us TODAY or risk waiting until the next batch of samples are available.

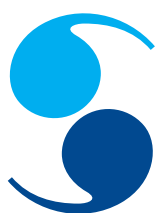


**NSW** and **ACT** call Steve on 0437 873 275

**VIC** and **TAS** call Phil on 0400 579 590

**WA** and **SA** call Craig on 0435 949 077

**QLD** and **NT** call Christine (Sales Manager) on 0422 571 384



# Speech Pathology Australia

## Speech Pathology Australia

Level 2 / 11–19 Bank Place

Melbourne Victoria 3000

T 1300 368 835 F +61 3 9642 4922

Email: [office@speechpathologyaustralia.org.au](mailto:office@speechpathologyaustralia.org.au)

Website: [www.speechpathologyaustralia.org.au](http://www.speechpathologyaustralia.org.au)

## Contents

ClearSpeak Pty Ltd	4
Continuing Professional Education in Stuttering	4
Department for Education and Child Development (SA)	4
Guild	7
Key Word Sign NSW	4
Language and Learning Steps	10
Language, Speech and Literacy Services	8
The Learning App Guide to Autism and Education	8
The Linking Language with Secondary School Learning (LINK-S) Program	8
Love and Reilly	8
Lynn Rodgers	8
Member Advantage	10
Multimedia Speech Pathology	9
Paediatric Therapy and Workshops	6
Pelican Talk Speech Therapy Resource	9
Puppets for Learning	9
ReadingDoctor Software	9
Scope's Communication and Inclusion Resource Centre (CIRC)	5,9
Scope (Vic) Ltd	9
Sound Waves	10
speechBITE	6,10
Speech Pathology Resources	7
Susan Galletly Literacy Plus	6,11
TheraBee Programs	11
Therapy Matters	11
Trisco Foods Pty Ltd	2
Where4Kids – Soundasaurus	11
Wise Words Australia Pty Ltd	6
Zyteq Pty Ltd	11

### Disclaimer

*To the best of The Speech Pathology Association of Australia Limited's ('the Association') knowledge, this information is valid at the time of publication. The Association makes no warranty or representation in relation to the content or accuracy of the material in this publication. The Association expressly disclaims any and all liability (including liability for negligence) in respect of use of the information provided. The Association recommends you seek independent professional advice prior to making any decision involving matters outlined in this publication.*

© 2015 The Speech Pathology Association of Australia Limited

## ClearSpeak Pty Ltd

*Book (with DVD) of innovative and in-depth training techniques for accent modification and articulatory errors. Assess and train error sounds simply and quickly.*

**Subject:** Book 'Perfect Pronunciation' (2nd ed) with DVD by Alison Kimble-Fry and the ClearSpeak Adult Pronunciation Test

**Target group:** ESL, accent/pronunciation change, articulation, hearing impaired speech

**Focus:** Adult, Other (techniques can be adapted for children)

**Contact to order:** Alison Kimble

**Organisation:** ClearSpeak Pty Ltd

**Address:** 20 Prince George Parade, Hunters Hill, NSW 2110

**Phone:** 02 9816 4432

**Email:** [alison@clearspeak.com.au](mailto:alison@clearspeak.com.au)

**Website:** [www.clearspeak.com.au](http://www.clearspeak.com.au)

## Continuing Professional Education in Stuttering

*CPES provides professional education in stuttering for speech pathologists. Events include workshops, seminars, clinic observation days and teleconferences.*

**Subject:** Professional education for speech pathologists

**Target group:** Speech pathologists

**Focus:** Adult, Adolescent, Paediatric, School-aged, Neurological

**Contact to order:** Ms Jane Kelly

**Organisation:** Australian Stuttering Research Centre

**Address:** The University of Sydney, PO Box 170, Lidcombe, NSW 1825

**Phone:** 02 9351 9380 **Fax:** 02 9351 9392

**Email:** [cpes@sydney.edu.au](mailto:cpes@sydney.edu.au)

**Website:** [http://sydney.edu.au/health-sciences/asrc/continuing\\_education/index.shtml](http://sydney.edu.au/health-sciences/asrc/continuing_education/index.shtml)

## Department for Education and Child Development (SA)

**1) Newstalk CDs for speech pathologists and teachers; 2) Photo Sequencing Package; 3) Screen of Phonological Awareness (Rev 2nd ed, 2012); 4) Children... come and talk; 5) From what to why: Effective questioning.**

**Subject:** **1)** Using news telling in the classroom to enhance literate language; **2)** Sequencing and question comprehension skills; **3)** Phonological awareness 4–0 to 5–11 years; **4)** Evaluating language skills in Aboriginal children; **5)** Levels of questioning in activity and play

**Target group:** Speech pathologists, teachers of preschool and school-aged children

**Focus:** Paediatric, School-aged

**Contact to order:** Angelique Marcus

**Organisation:** Department for Education and Child Development, SA

**Address:** Special Education Resource Unit, 72A Marlborough Street, Henley Beach, SA 5022

**Phone:** 08 8235 2871 **Fax:** 08 8235 1907

**Email:** [admin@seru.sa.edu.au](mailto:admin@seru.sa.edu.au)

**Website:** <http://web.seru.sa.edu.au/Publications.htm>

## Guild

*Read more on page 7*

## Key Word Sign NSW

*Empowering people and their communities to communicate effectively through inclusive training and education about Key Word Sign (KWS).*

**Subject:** KWS NSW supports KWS presenters through state membership and provides presenter training

**Target group:** People who have communication difficulties and the people around them

**Focus:** Adult, Adolescent, Paediatric, School-aged, Other (Parents, Carers, Professionals)

**Contact to order:** Please see email address below.

**Organisation:** Key Word Sign NSW

**Address:** PO Box 3936, Parramatta, NSW 2124

**Email:** [committee@kwsnsw.com](mailto:committee@kwsnsw.com)

**Website:** [www.kwsnsw.com](http://www.kwsnsw.com)

## Language and Learning Steps

*Read more on page 10*



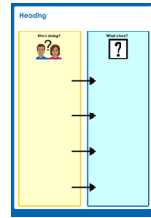


**Tools 2 Talk - \$14.99**



Download from iTunes or visit [www.scopevic.org.au/tools2talk](http://www.scopevic.org.au/tools2talk)

Tools 2 Talk is an iPad app of communication aid templates ready for you to individualise. It includes over 13,000 images from Symbolstix and COMPIC libraries. You can import photos directly from your camera roll, colour and edit the text, border and backgrounds. Print your board, save to PDF, email or export them to Dropbox.



**Communication Aid Creator - \$120**

USB format

The Communication Aid Creator features 15 pre-designed electronic templates. The templates include community request cards, alphabet boards, communication books, shopping lists and many more with a total of 50 templates. Also included is the COMPIC Image Library containing over 1,200 images. Available in both Microsoft Word and Boardmaker formats.



**CHAT- Now - \$77**

CHAT-Now is an educational template resource providing approximately 65 early childhood-focused activity display templates

for home and early childhood educational settings, which can be edited and printed using Boardmaker™.



**COMPIC Image library - \$55**

COMPIC (COMmunication PICtographs)

COMPIC is a set of computer-generated line drawings created and developed in Australia. Available on either CD or USB. The library contains approximately 1,200 colour pictographs.



**My Calendar - \$180**

My Calendar is a magnetic calendar designed for adults who have difficulty reading. This product includes over 50 picture magnets of events and activities.



**My Calendar for Kids** - My Calendar with activities and events tailored specifically to children.



**Everyday Communication Aid Kit - \$990**

This kit provides examples of communication aids and resources, including "Book About Me", Chores Chart, Community Request Cards, Picture-based Timetable, Who's Here Today chart, and many more.



**Triple C - Checklist of communication competencies.**

Manual, CD & 20 checklists - \$110  
20 checklists **ONLY** - \$33

The updated Triple C Assessment manual (revised edition 2009) is a "no fail" communication assessment for adolescents and adults with limited or no speech. The manual includes a checklist that is easy to learn, use and interpret.



**InterAAction : Strategies for Intentional & Unintentional Communicators. InterAAction Manual & DVD - \$143**

The InterAAction manual is designed for use by people who support adults with limited speech or who have speech that is difficult to understand. The manual contains over 30 individualised communication strategies.



**Getting Started with Key Word Sign (AUSLAN edition) - \$25**

These signs are designed for interactive use and are the 'starter set' for using Key Word Sign and natural gesture. Over 100 words are included - each with a clear line drawing and a written description. The finger spelling alphabet is also included.



**Key Signs CD-ROM - \$40**

Contains 250 everyday signs you will love, including; socks, Santa, McDonald's, ant, koala, milkshake, underpants, Vegemite, frog and 240 more useful signs. Includes a clear video clip (10-15 seconds) for each of the 250 words. Also includes the finger spelling alphabet, numbers and real world video examples of signing in action.



**Key Word Sign Footy Book - \$25**

120 signs for AFL lovers - includes AFL team logos, footy grounds and food. In colour, robust, spiral bound. And, it fits in your pocket!

**Order online now!**

[www.scopevic.org.au/shop](http://www.scopevic.org.au/shop)

Email: [circ@scopevic.org.au](mailto:circ@scopevic.org.au)

Ph: (03) 9843 2000





## speechBITE Answering the need for better access to evidence

**FREE RESOURCE**  
[speechbite.com](http://speechbite.com)

Have you been looking for treatment research but don't know where to start? Most speech pathologists (SPs) don't have time to spend hours searching different databases to find published research. Evaluating the scientific quality of research can be another hurdle for clinicians who are looking for the best evidence to improve client outcomes.

speechBITE is a searchable database providing access and appraisal of intervention research in SLP. There are over 4,000 research articles which we have found for you by searching multiple online databases (e.g., Medline, PsycINFO). We only list treatment research relevant to SPs and the database is updated monthly, so you can be sure you have access to the **LATEST PRE-APPRAISED EVIDENCE**.

- **Search** for articles
- **Obtain** ratings of methodological design
- **Learn** how to critically appraise methods
- **Stay informed** with regular updates
- **Connect** with us @[speechBITE](https://twitter.com/speechBITE) or [www.facebook.com/speechBITE](http://www.facebook.com/speechBITE)

## Empower Children's Language & Literacy!

Sounds & Vowels

Two Vowels Talking

Phonological Fun

Literacy Plus resources, created by **Dr Susan Galletly**, are research theory made practical: comprehensive materials packed with games and fun, for powerful systematic skill development of word reading and spelling skills.



Visit the Literacy Plus website today to...

- **View** 'how-to' videos of Literacy Plus activities and materials
- **Examine** Literacy Plus products for 30 days free
- **Register** for Literacy Plus Newsletters, packed with great ideas and FREE downloads

Learning Made Fun!

Newsletters • Resources • Seminars  
[www.literacyplus.com.au](http://www.literacyplus.com.au)

**literacy**  
PLUS

## PAEDIATRIC THERAPY & WORKSHOPS

*Theory • Practice • Research*



### Paediatric Therapy & Workshops:

- provides intensive treatment for children with cerebral palsy and other neuromotor issues
- facilitates post-graduate training for allied health professionals
- conducts research into the effectiveness of Neuro-Developmental Treatment.

### The Intensive Therapy Program is:

- an innovative treatment approach designed to address the unique and desired goals of each child and the child's family
- held at Cerebral Palsy Support Network (Preston, VIC), and Southern Cross University Health Sciences (Gold Coast, QLD)
- available via home visits.

### Workshops and courses in Neuro-Developmental Treatment (NDT USA) include:

- the NDT Certificate Course in the Management and Treatment of Children with Cerebral Palsy  
- Next course scheduled for October 2015 & January 2016
- workshops in breathing, feeding and speech with Monica Wojcik, MA, CCC-SLP, C/NDT (October 2015).

### Further information from:

Chris Porter, PhD, Manager  
Paediatric Therapy & Workshops  
PO Box 1478, GEELONG, VIC  
M: +61 (0) 412 751 741  
[pw@paediatricworkshops.com.au](mailto:pw@paediatricworkshops.com.au)  
[www.paediatricworkshops.com.au](http://www.paediatricworkshops.com.au)

## WISE WORDS AUSTRALIA PTY LTD



### THERAPY RESOURCES FOR CHILDREN

The **Wise Words Language Programs** are underpinned by the work of Marion Blank Ph.D. and her "Model of Classroom Language". The programs target each of the four levels of understanding.

The **Wise Words Articulation Programs** provide ready-made games and activities at the sound, word and sentence level and in particular provide activities for vowels and "the late eight" sounds (r, s, z, l, sh, ch, th).

Wise Words programs can be ordered via the internet from the Wise Words website and are provided on a CD. All programs have been designed by an experienced practising speech and language pathologist.

Wise Words products are protected by copyright. The purchaser is granted a licence to print or photocopy the materials for children that he/she is working with.

p +61 2 9817 5628 e [suzu@wisewordsaustralia.com](mailto:suzu@wisewordsaustralia.com)  
[www.wisewordsaustralia.com](http://www.wisewordsaustralia.com)



# 2 months FREE insurance cover.

## Now that's worth talking about!



### Better through experience

When you take out a liabilities policy with Guild Insurance you receive insurance designed specifically for your profession covering the specific risks you face in your work every day. Plus you'll also get an extra 2 months cover at no additional cost. That's 14 months for the price of 12 months – now that's great value!

Already with Guild Insurance? You'll automatically get this extra cover when you renew your policy.

With so much extra, there's no better time to be with Guild Insurance. Apply today.  
[guildinsurance.com.au](http://guildinsurance.com.au)



Insurance issued by Guild Insurance Ltd, ABN 55 004 538 863, AFSL 233791 and subject to terms, conditions and exclusions. Guild Insurance supports your association through the payment of referral fees. This information is of a general nature only; please refer to the policy for details. The 14 month for 12 offer is only available to new and renewing customers who purchase or renew their existing policy before the 1st March 2016. Please contact Guild Insurance on 1800 810 213 for further information. GLD3052 SPA Press Ad 02/2015.



# SPEECH PATHOLOGY RESOURCES



Australian apps to encourage speech and language development.

### Katie's Missing Laugh



- Target /k/
- Vocabulary
- Phonological awareness

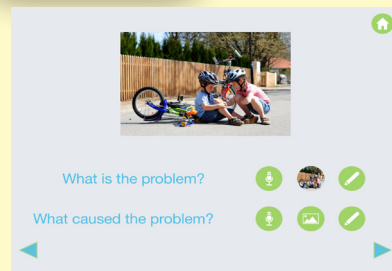


### Solve It

Solve your problems



- Problem solving
- Emotions
- Questions
- Reasoning



[www.speechpathologyresources.com.au](http://www.speechpathologyresources.com.au)



## Language, Speech and Literacy Services

*Phonological awareness tests: SPAT-R, AIST-2, SEAPART.*

**Subject:** Phonological and phonemic awareness

**Target group:** SLPs, teachers, working with early literacy and remedial literacy

**Focus:** School-aged

**Contact to order:** Roslyn Neilson

**Organisation:** Language, Speech & Literacy Services

**Address:** PO Box 72, Jamberoo, NSW 2533

**Phone:** 0421 822 898

**Email:** [roslyn@roslynneilson.com.au](mailto:roslyn@roslynneilson.com.au)

**Website:** [roslynneilson.com.au](http://roslynneilson.com.au)

## The Learning App Guide to Autism and Education

*The App Guide uses a research-based rubric to evaluate over 800 apps for children with autism, language, literacy and learning disabilities.*

**Subject:** Technology, iPad apps, social skills, language, emotions, behaviour, early literacy

**Target group:** Children with autism, language, literacy and learning disabilities

**Focus:** Paediatric, School-aged

**Contact to order:** Bronwyn Sutton

**Organisation:** Bronwyn Sutton Speech Pathology

**Address:** 1/249 Harts Rd, Indooroopilly, QLD 4068

**Phone:** 07 3876 9529 **Fax:** 07 3876 9529

**Email:** [bsutton@suttonspeech.com.au](mailto:bsutton@suttonspeech.com.au)

**Website:** [www.learningappguide.com](http://www.learningappguide.com)

## The Linking Language with Secondary School Learning (LINK-S) Program

*The LINK-S Program manual presents an evidence-based professionally collaborative approach to supporting secondary school students with language impairment.*

**Subject:** The manual includes the teacher training program framework and multiple resources

**Target group:** Speech pathologists and secondary school teachers (mainstream and learning support)

**Focus:** Adolescent

**Contact to order:** Dr Julia Starling

**Organisation:** The LINK-S Program/Lane Cove Speech-Language-Learning Centre

**Address:** 221 Longueville Road, Lane Cove, NSW 2066

**Phone:** 0410 490 821

**Email:** [links1resource@gmail.com](mailto:links1resource@gmail.com)

**Website:** [www.linksresources.com.au](http://www.linksresources.com.au)

## Love and Reilly

*Lots of resources, training opportunities and free articles. Sign up to our e-newsletter via the website or 'like' us on Facebook.*

**Subject:** Phonological awareness, language, literacy

**Target group:** Whole-class programming, group work, individual sessions

**Focus:** School-aged

**Contact to order:** Lucia Smith

**Organisation:** Love and Reilly

**Phone:** 03 5154 8558 **Fax:** 03 9018 4460

**Email:** [info@loveandreilly.com.au](mailto:info@loveandreilly.com.au)

**Website:** [www.loveandreilly.com.au](http://www.loveandreilly.com.au),

[www.facebook.com/loveandreilly](http://www.facebook.com/loveandreilly)

## Lynn Rodgers

*Pictures covering all sounds in all word positions for use in articulation therapy. Lynn Rodgers 'Articulation Therapy Aids' (Book 1), Lynn Rodgers 'Consonant Blends, Vowels and Diphthongs' (Book 2). Available in book or CD-ROM format.*

**Subject:** Articulation

**Target group:** Speech pathologists, parents and teachers working with children

**Focus:** Paediatric, School-aged

**Contact to order:** Lynn Rodgers

**Organisation:** Lynn Rodgers

**Address:** 18A Old Sackville Road, Wilberforce, NSW 2756

**Phone:** 02 4575 1335

**Email:** [lynn@jerahtech.com.au](mailto:lynn@jerahtech.com.au)

**Website:** [www.ros.com.au/~crodgers/artic](http://www.ros.com.au/~crodgers/artic)

## Member Advantage

*Read more on page 10*



## Multimedia Speech Pathology

*Easy to use, time saving and effective software and IOS apps for motor speech, language, early literacy, aphasia rehab and voice analysis. Subscription option and free trials available.*

**Subject:** Speech Sounds on Cue, Speech Sounds for Kids, React2, Bungalow Software, Sentence Shaper, lingWAVES (WEVOSYS)

**Target group:** Speech and language impaired adults and children, carers, speech pathologists, voice specialists, teachers, health professionals

**Focus:** Adult, Adolescent, Paediatric, School-aged, Neurological, Other (For use in clinic, ward, school or home)

**Contact to order:** Carol Bishop, Speech Pathologist

**Organisation:** Multimedia Speech Pathology

**Address:** PO Box 1297, Coolangatta, QLD 4225

**Phone:** 0407 293 579 **Fax:** 07 5536 6973

**Email:** [info@mmsp.com.au](mailto:info@mmsp.com.au) or [mmsp1@bigpond.com](mailto:mmsp1@bigpond.com)

**Website:** [www.mmsp.com.au](http://www.mmsp.com.au)

## Paediatric Therapy and Workshops

*Read more on page 6*

## Pelican Talk Speech Therapy Resource

*Australian speechies' favourite 'The Speech Sound Set' – pictures that represent all phonemes of Australian English. Loads of resources on one CD. There's an app too; "Speech Sounds for Kids" (see iTunes).*

**Subject:** Speech Sounds

**Target group:** Speech pathologists, teachers

**Focus:** Paediatric, School-aged

**Contact to order:** Lucia Smith

**Organisation:** Pelican Talk Speech Therapy Resource

**Phone:** 03 5154 8558 **Fax:** 03 9018 4460

**Email:** [lucia@pelicantalk.com](mailto:lucia@pelicantalk.com)

**Website:** [www.pelicantalk.com](http://www.pelicantalk.com)

## Puppets for Learning

*We stock puppets for use in speech pathology. Ranging from rubber mouth puppets to super-cute kid puppets (for social goals); our puppets make sessions fun!*

**Subject:** Puppets for therapy and teaching

**Target group:** All children – big and small

**Focus:** Adolescent, Paediatric, School-aged

**Contact to order:** Lucia Smith

**Organisation:** Puppets for Learning

**Phone:** 03 5154 8558 **Fax:** 03 9018 4460

**Email:** [handup@puppetsforlearning.com.au](mailto:handup@puppetsforlearning.com.au)

**Website:** [www.puppetsforlearning.com.au](http://www.puppetsforlearning.com.au)

## ReadingDoctor Software

*Fun, effective, scientifically based computer and iPad games for children, designed to strengthen phonological awareness, phonemic awareness and other crucial literacy skills. Australian made.*

**Subject:** Literacy, reading, spelling, phonological awareness

**Target group:** Children with literacy difficulties, children learning to read

**Focus:** Paediatric

**Contact to order:** Dr Bartek Rajkowski

**Organisation:** ReadingDoctor Software

**Address:** PO Box 52, Blackwood, SA 5051

**Phone:** 1300 669 940 **Fax:** 08 8331 9884

**Email:** [sales@readingdoctor.com.au](mailto:sales@readingdoctor.com.au)

**Website:** [www.readingdoctor.com.au](http://www.readingdoctor.com.au)

## Scope's Communication and Inclusion Resource Centre (CIRC)

*The CIRC provides a range of products and services, specialising in AAC. Want to be awarded the Communication Access Symbol? Contact us!*

**Subject:** AAC – Augmentative & Alternative Communication

**Target group:** All ages

**Contact to order:** Communication and Inclusion Resource Centre

**Organisation:** Scope

**Address:** 830 Whitehorse Rd, Box Hill, VIC 3128

**Phone:** 03 9843 2000 **Fax:** 03 9843 2033

**Email:** [circ@scopevic.org.au](mailto:circ@scopevic.org.au)

**Website:** [www.scopevic.org.au](http://www.scopevic.org.au)

*Read more on page 5*

## Scope (Vic) Ltd

*Quality Mealtime Support Training Resource includes an MP4 video, training activities, handouts and video-clips. For use in mealtime-assistance training. \$30.*

**Subject:** Dysphagia

**Target group:** Adults with developmental disability

**Focus:** Adult

**Contact to order:** Dianne Thomson, Administration Officer

**Organisation:** Scope

**Address:** 177 Glenroy Rd, Glenroy, VIC 3046

**Phone:** 03 8311 4018 **Fax:** 03 9306 6654

**Email:** [dthomson@scopevic.org.au](mailto:dthomson@scopevic.org.au)

**Website:** [www.scopevic.org.au](http://www.scopevic.org.au)

## Language and Learning Steps

### Educational Therapy Programs

Presents a **NEW LANGUAGE ACTION APP**



### “KEY VERBS with STEFFY & JAMES”™

on iPad & iPhone

Introduces actions in single word present tense commands & descriptions, then past tense descriptions, with pronouns and both regular and irregular verbs. Teach & test.

**Tried our internationally popular Language Program App?**

### “KEY WORD KIDS”™

on iPad



Uses ‘INFORMATION CARRYING WORDS’ & is based on the DERBYSHIRE LANGUAGE SCHEME (Masidlover, 1982)

- Comprehension & Expression / Concepts & Grammar
- Graded Levels & Level Finder
- Records Free Play Expression & Emails scores
- Suits children learning to listen, understand & practice.

Use both Australian apps to:

- Support all language learners (1- 7+ yrs)
  - ESL/ Autism/ Dyspraxia / Language Disorder
- Teach In Context- 5 scenes /Neutral Accent
- Reward with Mini-games / Adaptable settings

Sue Park Speech Pathologist

Janet Eales Guid.Counsellor/Spec.Educator/Play Therapist

E: [info@languageandlearningsteps.com.au](mailto:info@languageandlearningsteps.com.au)

f Language and Learning Steps @langlearnsteps

[www.languageandlearningsteps.com.au](http://www.languageandlearningsteps.com.au)

## Sound Waves

*Proven spelling and reading program for explicit teaching of phonemic approach. Workbooks, online and flexible teaching resources. Download free trial.*

**Subject:** Phonemic approach to spelling and reading

**Target group:** Foundation to Year 6 primary school students

**Focus:** Paediatric, School-aged

**Contact to order:** Paul McCallum

**Organisation:** Firefly Education

**Address:** PO Box 634, Buderim, QLD 4556

**Phone:** 0459 028 036 **Fax:** 07 5445 5171

**Email:** [paul@fireflyeducation.com.au](mailto:paul@fireflyeducation.com.au)

**Website:** [www.soundwavesspelling.com.au](http://www.soundwavesspelling.com.au)

## speechBITE

*Online database of treatment studies for communication and swallowing disorders. Provides methodological ratings, enabling clinicians to find best evidence easily.*

**Subject:** Evidence Based Practice

**Target group:** Speech pathologists and student speech pathologists

**Focus:** Adult, Adolescent, Paediatric, School-aged, Neurological, Other (Evidence Based Practice) (cont/d)

# SPA Members: Enjoy your benefits!

## Your ultimate benefit experience!

Your SPA membership gives you free access to a wide range of quality lifestyle and financial benefits through Member Advantage.

Save on:

- Dining and entertainment
- Finance and insurance products
- Travel and shopping



To learn more about your benefits, contact SPA Member Advantage:  
1300 853 352 | [www.memberadvantage.com.au/spa](http://www.memberadvantage.com.au/spa)





**Contact to order:** Kate Smith/Melissa Brunner  
**Organisation:** speechBITE  
**Address:** speechBITE – Faculty of Health Sciences,  
The University of Sydney, PO Box 170, Lidcombe,  
NSW 1825  
**Phone:** 02 9351 9713 **Fax:** 02 9351 9173  
**Email:** [info@speechbite.com](mailto:info@speechbite.com)  
**Website:** [www.speechbite.com](http://www.speechbite.com)  
*Read more on page 6*

### Speech Pathology Resources

*Read more on page 7*

### Susan Galletly Literacy Plus

*Fun-packed modules: Phonological Fun, Sounds & Vowels, Two Vowels Talking. See advertisement on page 6 for details. Literacy Plus: Learning Made Fun! [www.literacyplus.com.au](http://www.literacyplus.com.au)*

**Subject:** Reading and literacy for children with reading difficulties  
**Target group:** Speech pathologists, teachers and parents of at-risk pre-schoolers and school-aged children  
**Focus:** Adolescent, Paediatric, School-aged  
**Contact to order:** Pro-Ed Australia  
**Organisation:** Literacy Plus, selling through Pro-Ed Australia  
**Phone:** 07 5593 8966 **Fax:** 07 5593 8969  
**Email:** [admin@proedaust.com.au](mailto:admin@proedaust.com.au)  
**Website:** [www.literacyplus.com.au](http://www.literacyplus.com.au),  
[www.proedaust.com.au](http://www.proedaust.com.au)  
*Read more on page 6*

### TheraBee Programs

*Reproducible speech and language programs for parents, teachers and therapists. Useful for pre-school through to school-aged clients. Time saving and relevant for Australian clients.*

**Subject:** Speech, language and literacy programs  
**Target group:** Speech delay, language impairment and literacy difficulties  
**Focus:** Adolescent, Paediatric, School-aged  
**Contact to order:** Melissa Haynes  
**Organisation:** TheraBee Programs  
**Address:** PO Box 361, Penrith, NSW 2751  
**Phone:** 02 4736 8151 **Fax:** 02 4736 8171  
**Email:** [info@therabee.com](mailto:info@therabee.com)  
**Website:** [www.therabee.com.au](http://www.therabee.com.au)

### Therapy Matters

*Interactive hands-on tools such as Braidy, Story Braid puppet by MindWing Concepts and Visualising and Verbalising program materials from Lindamood-Bell.*

**Subject:** Intervention for oral language, narratives and literacy difficulties  
**Target group:** School-aged children  
**Focus:** Adolescent, Paediatric, School-aged  
**Contact to order:** Tania Teitzel  
**Organisation:** Therapy Matters  
**Address:** Suite 4, 43 Tallebudgera Creek Rd,  
West Burleigh, QLD 4219  
**Phone:** 07 5520 7860 **Fax:** 07 5520 7902  
**Email:** [orders@therapymatters.com.au](mailto:orders@therapymatters.com.au)  
**Website:** [www.therapymatters.com.au](http://www.therapymatters.com.au)

### Trisco Foods Pty Ltd

*Read more on page 2 (inside front cover)*

### Where4Kids – Soundasaurus

*Soundasaurus is a sound-based reference resource to help children find and spell words. Accompanying games and resources also available.*

**Subject:** Spelling using a phonemic and phonic approach  
**Target group:** Primary school-aged children and ESL students  
**Focus:** School-aged  
**Contact to order:** Vivienne Gyopar  
**Organisation:** Where4Kids  
**Address:** Box 7145, Gardenvale LPO, Brighton, VIC 3186  
**Phone:** 0438 345 945 **Fax:** 03 9591 0637  
**Email:** [vgyopar@where4kids.com.au](mailto:vgyopar@where4kids.com.au)  
**Website:** [www.where4kids.com.au](http://www.where4kids.com.au)

### Wise Words Australia Pty Ltd

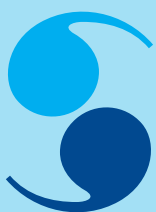
*Read more on page 6*

### Zyteq Pty Ltd

*Zyteq provides Assistive Technology Australia-wide. Specialising in Speech Generating Devices and eye gaze, our speech pathologists advise, train and support.*

**Subject:** Assistive Technology  
**Target group:** People with complex communication needs  
**Focus:** Adult, Adolescent, Paediatric, School-aged, Neurological  
**Contact to order:** Tracey Bode  
**Organisation:** Zyteq  
**Address:** PO Box 190, South Melbourne, VIC 3205  
**Phone:** 03 9696 2944 **Fax:** 03 9696 1755  
**Email:** [info@zyteq.com.au](mailto:info@zyteq.com.au) **Website:** [www.zyteq.com.au](http://www.zyteq.com.au)





Speech  
Pathology  
Australia

**Speech Pathology Australia**

Level 2 / 11-19 Bank Place

Melbourne Victoria 3000

T 1300 368 835 F +61 3 9642 4922

Email: [office@speechpathologyaustralia.org.au](mailto:office@speechpathologyaustralia.org.au)

Website: [www.speechpathologyaustralia.org.au](http://www.speechpathologyaustralia.org.au)