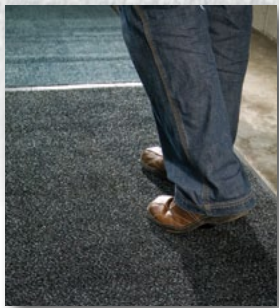
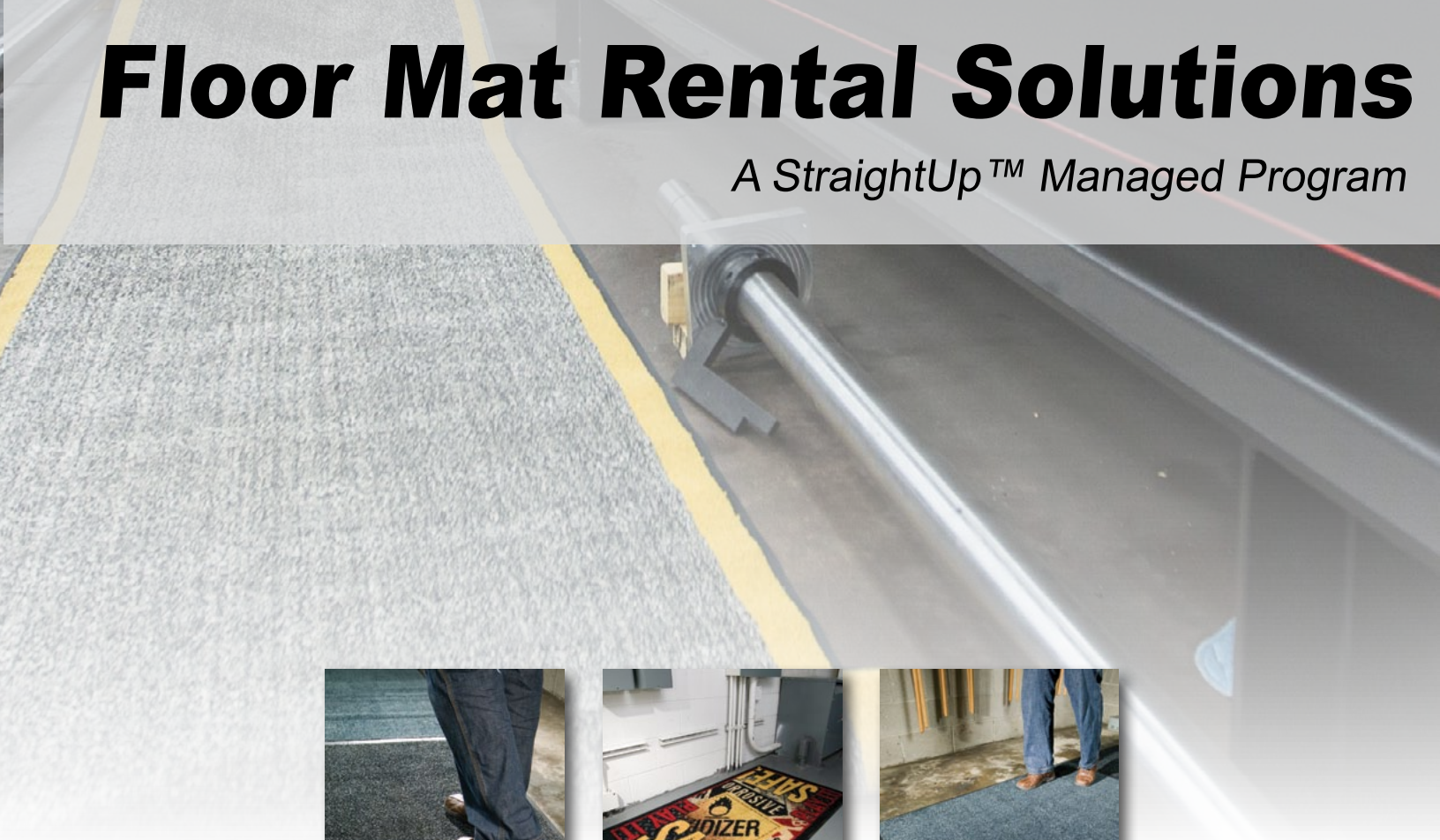




# Floor Mat Rental Solutions

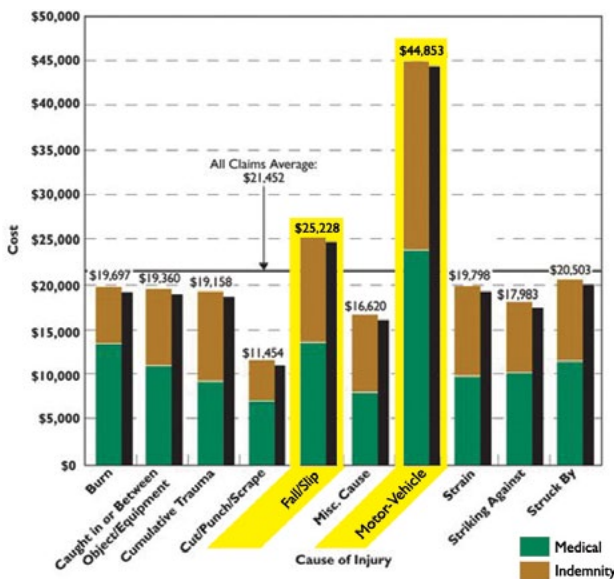
A StraightUp™ Managed Program



 **AbsorbTech**®  
Cleaner, safer solutions for industry



Average Total Incurred Costs per Claim by Cause of Injury (2005-06)



Data from the National Safety Council's 2009 Injury Facts.

## How Dirt Gets There

Did you know that 70%–90% of dirt that enters a facility is tracked in on people's shoes — that's a quarter pound per day per 1,000 people.

## What Dirt Does

Without entrance matting and all the tracked-in dirt, 1,500 people can remove 42% of the finish off a floor. This is why the tracked-in soil is the number one cause of building maintenance costs.

## Why Stop the Dirt?

Reducing the dirt is critical to the bottom line. Professionally maintained mats reduce tracked-in dirt by 80% — that's a savings of \$500–\$900 in maintenance costs for every pound of dirt stopped. Plus, the slip/fall cost per claim is well over \$20,000, which is second only to auto accident claims. A strategically placed and professionally maintained floor care program can also help reduce these slip/fall costs.

## Our Unique Program

**Scrape** — First line of defense to trap large dirt and debris (e.g., mud, pebbles and ice) at mat base, stopping outside elements from tracking into your facility

**Brush** — Second line of defense to remove and hold dirt, water, salt and debris

**Wipe** — Third line of defense to remove and trap fine dust, grit and dirt

**Show** — Fourth line of defense to function as a wipe mat and publicize your company logo and identity

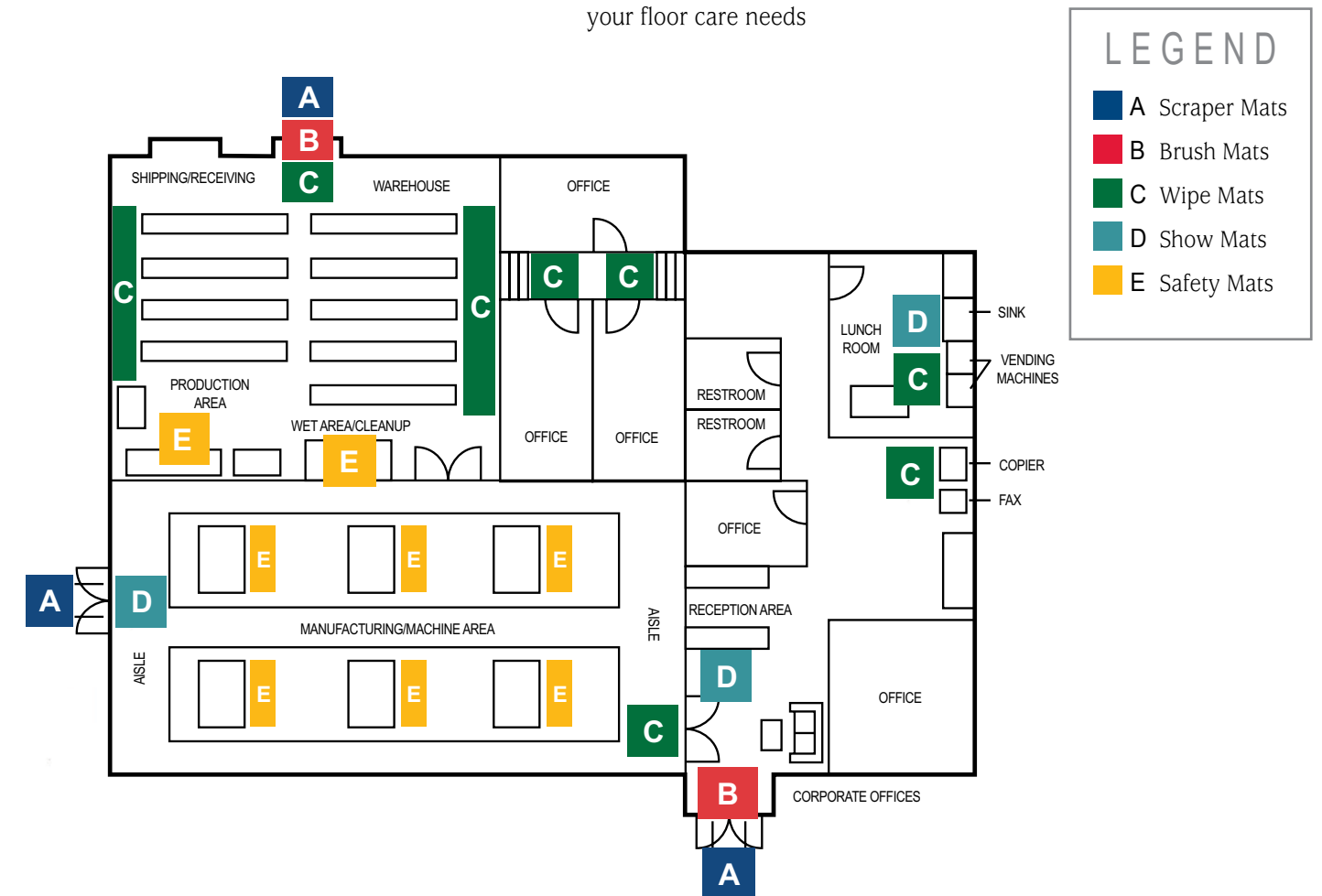
**Safety** — Additional line of defense to help prevent injury through the use of Accident Prevention Mats, FatigueBusters™, SAFEmats® and SlipBusters®

# THE SOLUTION

## Our Managed Floor Care Program

With ITU AbsorbTech's Managed Floor Care, the Scrape–Brush–Wipe–Safety System, all your facility bases are covered. The benefits of our comprehensive system include:

- On-site needs analysis
- Planned service reviews
- No inventory or capital costs
- Low monthly service charge
- Simple to budget — no hidden costs
- Easy access to the our Customer Response Center
- Scheduled delivery of clean product and removal of soiled product
- A range of sizes available to meet your floor care needs







## SuperTred™ Scraper Mats

*The first line of defense* ... Specifically engineered to trap larger dirt and moisture such as mud, pebbles, ice and other large debris at the base of the mat, our SuperTred™ Scraper Mats keep the mess out of your building.

- Mainly for outdoor use; can also be used indoors
- 100% heavy nitrile rubber provides skid resistance
- Color: black

## YOUR LINES OF DEFENSE

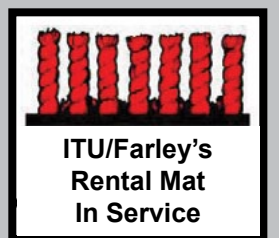
### Brush Mats

*The second line of defense* ... Course fibers are woven into the mat. These fibers help remove and hold medium-sized dirt, water, salt and other debris that you want to keep out of your facility.

- Feel and hear the difference
- Color: Black Lava, BrownGuard™
- Sizes to fit your needs



## KEEPING BUILDINGS CLEAN



### See and Feel the Difference

The rental wipe mat fibers, coupled with professional laundering, stand up and last much longer than typical direct purchase mats. This prevents soil from spreading throughout your building.



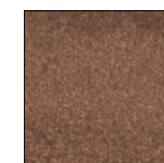
### Wipe Mats

*The third line of defense* ... The specially woven yarns remove and trap fine dust, grit and dirt to prevent soil from spreading in your facility. The heavyweight rubber backing and grippers keep mats from sliding.

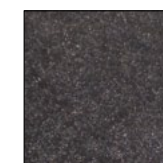
- Colors: base colors listed below



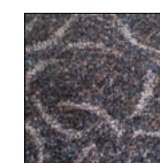
NTM Gray



Millennium Brown



Charcoal



Pattern





## Show Mats

*The fourth line of defense* ... Publicize your corporate identity by displaying your company logo, advertise products or services, and reinforce mission statements. This customized wipe mat enhances your image, creates a positive impression and provides a professional look.

- Simply provide a high-resolution logo or letterhead
- Colors: 189 base colors available and an additional 700 color shades
- Widths available up to 5 feet wide (custom sizes available)
- Highlight a specific theme or message



## Accident Prevention Mats

With a wide variety of safety messages available, customize your wipe mats to protect floors while alerting employees of hazards.

- Synthetic fibers and heavy rubber backing
- Holds up to substantial, intense or harsh traffic.
- Maintains its color

# PROMOTING COMPANY IMAGE AND SAFETY





# A SAFER ENVIRONMENT

## OSHA Mandate 1910.22(a)(2)

*“The floor of every workroom shall be maintained in a clean and so far as possible, a dry condition. Where wet processes are used, drainage shall be maintained, and false floors, platforms, mats or other dry standing places should be provided where practicable.”*

## What It Means

Maintain dry and clean work floors to reduce employee hazards and worker’s compensation claims.

## How We Assist in Compliance

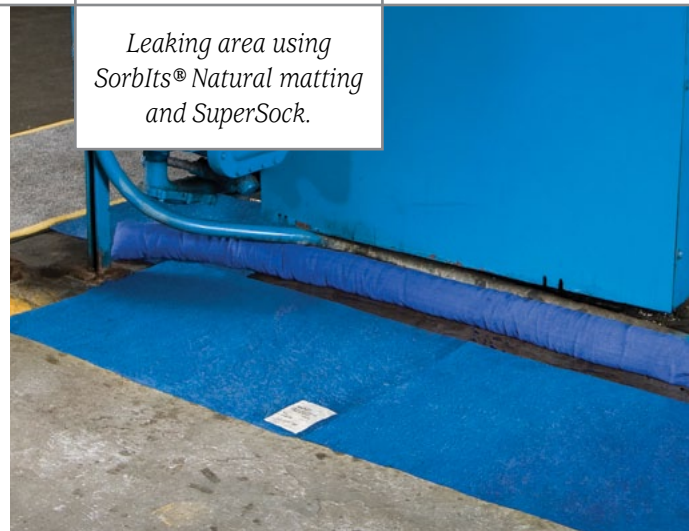
- Keeps areas clean and free of debris
- In wet areas, provides:
  - Drainage
  - Floor Mats

BEFORE

*Leaking area using granulated product to clean up oil.*

AFTER

*Leaking area using SorblIts® Natural matting and SuperSock.*



## SorblIts® Floor Care Safety

- SorblIts® absorbent material catches and holds fluids
- Safety striping clearly marked on mat raises awareness to slip hazard
- Low profile designed to accommodate wheel traffic and reduce trip hazards
- Meets ADA Standards

## THE SorblIts® SOLUTION

### SAFEmats®

- Combines anti-fatigue ergonomic benefits with SorblIts® absorbency
- Slip- and oil-resistant nitrile rubber
- Super absorbent SorblIts® insert



### SlipBusters®

- Uses SorblIts® absorbent materials
- Slip- and oil-resistant nitrile backing



# REDUCE PHYSICAL STRESS



## **FatigueBusters™ Anti-Fatigue Mats**

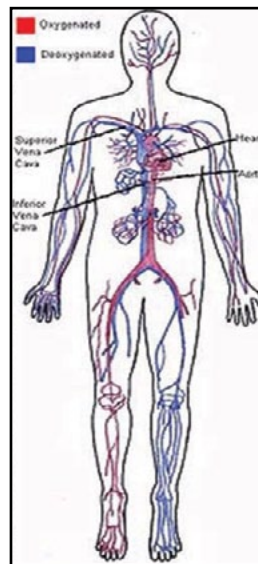
Reduce worker fatigue with ITU AbsorbTech's FatigueBusters™. The suspended bounce construction reduces ankle, leg, knee and back fatigue, as well as improving employee morale.

- Rubber construction holds up to oils and solvents.
- Beveled edges eliminate trip hazards and interlocking edges fit any workstation.
- Solid or drain-through styles available.

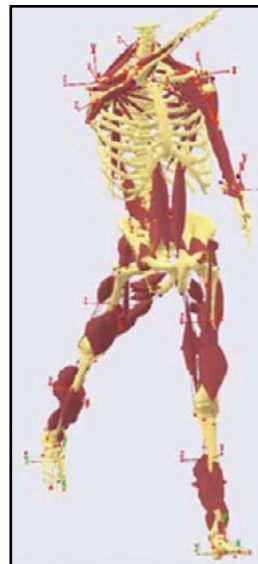
## **Ergonomic Benefits**

When standing for long periods of time, FatigueBusters™ limit physical stress on muscles and joints through:

- Relieved leg muscle tension (otherwise, legs become totally static and constricted working overtime to keep person upright on hard surfaces)
- Increased blood flow
- Increased oxygen reaching the heart
- Decreased physical fatigue



When ergonomic benefits are neglected, the human circulatory system—comprising much of the lower body circulation—suffers.  
(Source: web.jjay.cuny.edu)



There are more than 300 muscles developed in the human body.  
(Source: Body Modeling System: <http://anybody.auc.dk/pdf/seoul.pdf>)

## **Why Our Floor Care Program?**

**Value ...** Professionally maintained mats reduce tracked-in dirt by 80%, saving \$500–\$900 in maintenance costs for every pound of dirt stopped.

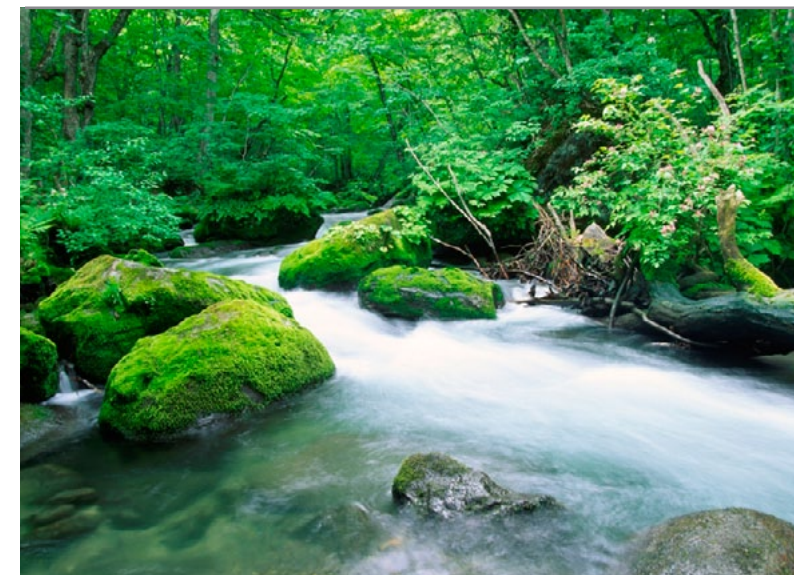
**Environmental ...** As an environmental steward, ITU AbsorbTech offers an array of environmentally-preferred products, such as floor mats and mops, that help minimize the impact on the environment.

**Trust ...** From our Customer Response Center to our Route Representatives, you can count on ITU AbsorbTech.

**Convenience ...** You may already be accustomed to our other products and services. Consolidate your vendors while consolidating your invoices by partnering with ITU AbsorbTech on a managed floor care program.



# EXPERIENCE THE DIFFERENCE



## **Valuing Environmental Stewardship**

ITU AbsorbTech provides environmental solutions through environmentally preferable programs and products:

- Waste reduction
- Reusable products vs. disposable products that are landfilled
- Quantifiable reports

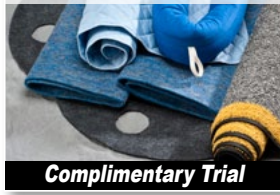
ITU AbsorbTech can help you meet your objectives:

- ISO 14001
- EPA
- OSHA



# Family of Services

## Sorblts® Absorbents



Full line of reusable absorbents laundered and supported by a managed service program.

- Mats
- Pads
- Socks
- Liners

Complimentary Trial

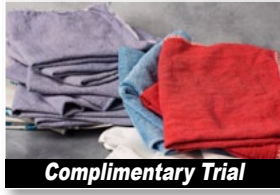
## Cotton Roll Towels



Clean and absorbent cotton roll towels are professionally laundered for a softer, more hygienic hand drying experience.

Complimentary Trial

## Sorblts® Towels



Full line of reusable printer and shop towels laundered and supported by a managed service program.

- Printer
- Lint Free
- Shop
- HiTech

Complimentary Trial

## First Aid



Managed program includes a dedicated specialist, OSHA/ANSI compliance and reliable delivery.

- Major injury
- Minor injury
- Burn and eye care
- Employee comfort

Complimentary Assessment

## Floor Care



Our floor care programs prevent debris, improve safety and reduce facility maintenance costs.

- Wipe
- Scrape
- Brush
- Logo

Complimentary Trial

## ITUdirect



A wide variety of name brand apparel and accessories for direct purchase.

- Apparel
- Promotional gifts
- Outerwear

Samples Available

## Garments & FR



Our managed garment programs improve image, safety and security.

- Work
- Protective
- Business
- NFPA 70E

## Facility Services



Washroom supplies and laundering programs for your facility's needs.

- Washroom
- Mops
- Gloves
- Filter bags

Complimentary Trial

## Our Company

ITU AbsorbTech is owned and operated by the Leef family now in its fourth generation of ownership. Brothers Jim and David Leef are committed to continuing the traditions started more than 80 years ago - Genuine Service Excellence, process and service innovation, and community involvement.

 **AbsorbTech**®  
Cleaner, safer solutions for industry

888-729-4884 ■ ITUAbsorbTech.com



Jim & David Leef

Family-Owned and Operated Since 1930