

TYPHOON®



CONTENTS



218	The Typhoon Story	262	Copper Lid	282	Scales
220	Modern Kitchen	264	Embossed	284	Solutions Cast Iron
226	Vintage Copper	266	Premium Utensils	286	Non Stick Woks
232	Vintage Mayfair	270	Nylon & Beechwood Utensils	288	Asian Accessories
236	Vintage Belmont	272	Solutions Tools	290	Trolleys
240	Vintage Kitchen	278	Seasonings	292	Shopping Bags
244	Living	280	Work Surface Protectors	294	Point of Sale
258	Otto Black				
260	Henrik				



THE TYPHOON STORY

Since starting as a small company inspired by Asian cookware in 1991, we have come a long way, now selling ranges internationally to all corners of the globe.

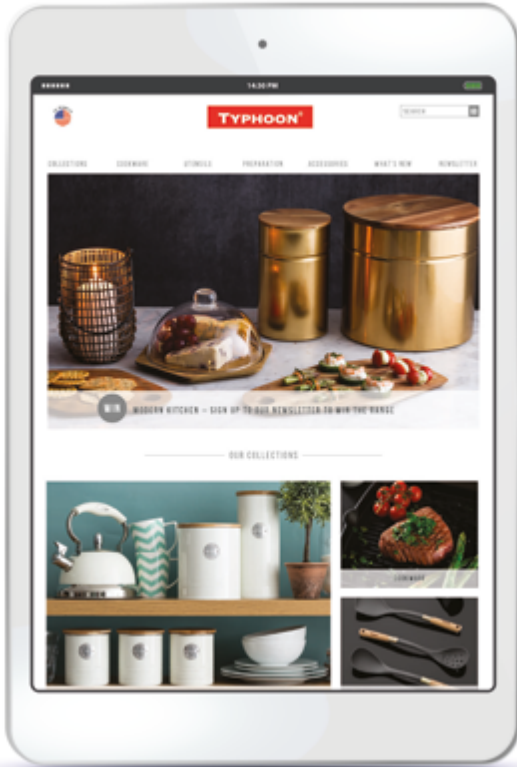
Typhoon's philosophy has always been to bring kitchen collections with great design and affordable prices to the market. Good design shouldn't cost the earth.

Our designers are committed to creating products heavily influenced by trends in shape, colour and product functionality. We evolve ideas from consumers needs and wants in the kitchen which inspires us to create everyday cooking, serving and storage products. Quality is key, we use the latest technologies and manufacturing processes to create pieces using the finest quality materials.

INTERNATIONAL

We strive to understand our diverse customer base's needs and tailor our products to each market's requirements through regular travel to gain feedback and develop new ideas! With a wide variety of customers from large retailers to smaller independents all across the globe we now have three warehouses covering North and South America, Asia and the Far East, the UK and Europe to ensure all products are delivered efficiently to ensure customer satisfaction.





MARKETING

With the rapid growth of online, multichannel communication we carefully coordinate a variety of platforms to inform our customers about our latest products. Our website is kept right up to date with our ranges giving inspiration through mood boards, recipe ideas, with “how to” sections, retail stockists and detailed product information to aid customer selection. We communicate through a variety of social media channels including Facebook, Instagram, Twitter and Pinterest, informing customers of our latest ranges, holding regular competitions to win our products, and offering inspiration on the latest trends to decorate your home. We even have a monthly newsletter emailed to our ever growing subscriber list offering giveaways, details of product launches and more. For our retailers we have a comprehensive full colour catalogue, a user-friendly online trade ordering system and an array of POS that can be utilised to inform customers of the Typhoon ranges.



YOUR HOME YOUR WAY

We put the customer at the heart of everything we do to create co-ordinated ranges tailored to individual design tastes and lifestyles. Whether it be bold and glamorous, muted and minimalist or traditionally rustic, we have collections to suit all tastes.

At Typhoon we believe it's your home your way.

MODERN KITCHEN

Gold is one of the hottest home décor trends of the year. The gilded accents of Modern Kitchen add a luxurious feel to the kitchen, while the combination of warm acacia wood with gold creates a glamorous and affluent look. With the glitzy storage and the bold geometric shapes of the wood, the range is classic with contemporary appeal.









NEW

MODERN KITCHEN GOLD SMALL STORAGE

Airtight silicone seal. Acacia wood lid.
Swing tag. Capacity: 0.9L.
Size: H 15.8 x Dia 9cm.

1401.180 • CTN 6



NEW

MODERN KITCHEN GOLD MEDIUM STORAGE

Airtight silicone seal. Acacia wood lid.
Swing tag. Capacity: 2.1L.
Size: H 15.8 x Dia 13.5cm.

1401.181 • CTN 6



NEW

MODERN KITCHEN GOLD LARGE STORAGE

Airtight silicone seal. Acacia wood lid.
Swing tag. Capacity: 2.8L.
Size: H 20.8 x Dia 13.5cm.

1401.182 • CTN 4



NEW

MODERN KITCHEN GOLD BREAD BIN

Acacia wood lid.
Swing tag.
Size: H 23 x Dia 25cm.

1401.183 • CTN 2





NEW

**MODERN KITCHEN ACACIA
SMALL CHOP BOARD**

Acacia wood. Swing tag.
Size: L 35 x W 20 x H 1.2cm.

1401.195 • CTN 6

NEW

**MODERN KITCHEN ACACIA
LARGE CHOP BOARD**

Acacia wood. Swing tag.
Size: L 25 x W 20 x H 1.2cm.

1401.194 • CTN 6



NEW

**MODERN KITCHEN ACACIA
CHEESE DOME**

Acacia wood with glass dome.
Gift box.
Size: L 24 x W 22 x H 14cm.

1401.196 • CTN 4



NEW

**MODERN KITCHEN ACACIA
SPOON**

Acacia wood. Swing tag.
Size: L 30cm.

1401.190 • CTN 6

NEW

**MODERN KITCHEN ACACIA
SLOTTED SPOON**

Acacia wood. Swing tag.
Size: L 30cm.

1401.191 • CTN 6

NEW

**MODERN KITCHEN ACACIA
TURNER**

Acacia wood. Swing tag.
Size: L 30cm.

1401.192 • CTN 6

NEW

**MODERN KITCHEN ACACIA
SLOTTED TURNER**

Acacia wood. Swing tag.
Size: L 30cm.

1401.193 • CTN 6

VINTAGE COPPER



With a warm sophisticated glow and classic shape, our Vintage Copper range captures the popular and continuing trend of metallic finishes across homewares. Made from high quality steel this range has been created to withstand the rigours of everyday life with a touch of understated luxury in your home.





COMPOST

TEA

COFFEE

SUGAR

COOKIES

BREAD



VINTAGE COPPER 3PC SET

Set of 3. Colour coated steel. Airtight silicone seal. Gift box. Capacity 950ml.

Size: H 17 x Dia 10cm.

1401.675 • CTN 2



VINTAGE COPPER COMPOST CADDY

Colour coated steel. Filter to neutralize odour. Easy to clean plastic liner.

Swing ticket. Capacity 3L. Size: H 21 x Dia 18cm.

1401.679 • CTN 4



VINTAGE COPPER BREAD BIN

Colour coated steel body. Reversible bread board lid. Sustainably sourced beech wood. Sleeve.

Size: W 36 x D 20 x H 14cm.

1401.680 • CTN 2



UTENSILS

COOKIES

CAKE



VINTAGE COPPER UTENSIL POT

Colour coated steel. Swing ticket.
Size: H 15 x Dia 13cm.

1401.676 • CTN 6



VINTAGE COPPER CAKE STORAGE

Colour coated steel. Airtight silicone seal.
Swing ticket. Capacity 3.8L.
Size: H 16 x Dia 22.5cm.

1401.677 • CTN 4



VINTAGE COPPER COOKIE STORAGE

Colour coated steel. Airtight silicone seal.
Swing ticket. Capacity 3.3L.
Size: H 20 x Dia 18cm.

1401.678 • CTN 4

VINTAGE MAYFAIR

Created with high quality steel and timeless appeal, Vintage Mayfair offers the perfect colour palette for any kitchen with grey for style and simplicity and white to keep the look clean and fresh, the combination is effortlessly chic.







VINTAGE MAYFAIR 3PC SET

Set of 3. Colour coated steel.
Airtight silicone seal. Gift box.
Capacity 950ml. Size: H 17 x Dia 10 cm
1401.669. CTN 2

VINTAGE MAYFAIR COMPOST CADDY

Colour coated steel. Filter to neutralize odour.
Easy to clean plastic liner.
Swing ticket. Capacity 3L.
Size: H 21 x Dia 18cm.
1401.673 • CTN 4



VINTAGE MAYFAIR BREAD BIN

Colour coated steel body.
Reversible bread board lid.
Sustainably sourced beech wood.
Sleeve. Size: W 36 x D 20 x H 14cm.
1401.674 • CTN 2





VINTAGE MAYFAIR CAKE STORAGE

Colour coated steel. Airtight silicone seal.

Swing ticket. Capacity 3.8L.

Size: H 16 x Dia 22.5 cm

1401.671. CTN 4

VINTAGE MAYFAIR COOKIE STORAGE

Colour coated steel. Airtight silicone seal.

Swing ticket. Capacity 3.3L.

Size: H 20 x Dia 18cm.

1401.672 • CTN 4



VINTAGE MAYFAIR UTENSIL POT

Colour coated steel.

Swing ticket.

Size: H 15 x Dia 13cm.

1401.670. CTN 6

VINTAGE BELMONT



With a history spanning over 10 years, the iconic Vintage Kitchen range is still going strong. Vintage Belmont has fresh colours and a sophisticated look. Made from high quality coated steel and using advanced production techniques to create a seamless finish. This storage range is designed to be hardwearing and robust.





TEA, COFFEE, SUGAR STORAGE SET

Set of 3. Colour coated steel.
Airtight silicone seal.
Gift box. Capacity 800ml.
Size: H 15 x Dia 10.5cm.

1400.125 • CTN 2



LARGE STORAGE

Colour coated steel. Airtight silicone seal.
Interchangeable labels. Swing ticket.
Capacity 3.65L. Size: H 19 x Dia 19.5cm.

1400.120 • CTN 2



BREAD BIN

Colour coated steel body.
Reversible bread board lid.
Sustainably sourced beechwood.
Sleeve. Size: H 16 x W 42 x D 25.5cm.

1400.124 • CTN 2

IT'S ALL IN THE DETAIL!

At Typhoon, we pride ourselves in producing the best for our customers, so where we can add special features we do! Open Vintage storage and see the contrasting colour inside.



COMPOST CADDY

Colour coated steel. Filter to neutralise odour.
Easy to clean. Plastic liner. Swing ticket.
Capacity 3L. Size: H 23 x W 21 X Dia 18cm.

1400.123 • CTN 3



UTENSIL POT

Colour coated steel. Swing ticket.
Size: H 17 x Dia 13cm.

1400.122 • CTN 3



BELMONT STORAGE 3.1L

Colour coated steel. Airtight silicone seal.
Interchangeable labels. Capacity 3.1L.
Swing ticket. Size: H 24 x Dia 15.3cm.

1400.126 • CTN 2



BELMONT STORAGE 1.9L

Colour coated steel. Airtight silicone seal.
Interchangeable labels. Capacity 1.9L.
Swing ticket. Size: H 22 x Dia 13cm.

1400.127 • CTN 2

VINTAGE BELMONT

VINTAGE KITCHEN

The Vintage Kitchen range evokes memories of our grandparents' kitchens. Practical details like airtight seals for storage canisters and filters to keep the compost caddy smelling sweet, ensure that this range is definitely not old fashioned. Made from high quality coated steel resulting in a smooth, silky finish, all items of the range have been designed to be durable for everyday use.





TEA, COFFEE, SUGAR STORAGE SET

Set of 3. Colour coated steel. Airtight silicone seal. Gift box. Capacity 800ml. Size: H 15 x Dia 10.5cm.

1400.581 • CTN 2



CREAM LARGE STORAGE

Colour coated steel. Airtight silicone seal. Interchangeable labels. Swing ticket. Capacity 3.65L. Size: H 19 x Dia 19.5cm.

1400.591 • CTN 2

CREAM BREAD BIN

Colour coated steel body. Reversible bread board lid. Sustainably sourced beechwood. Sleeve. Size: H 16 x W 42 x D 25.5cm.

1400.611 • CTN 2

CREAM COMPOST CADDY

Colour coated steel. Filter to neutralize odour. Easy to clean plastic liner. Swing ticket. Capacity 3L. Size: H 21 x Dia 18cm.

1400.551 • CTN 3

CREAM UTENSIL POT

Colour coated steel. Swing ticket. Size: H 17 x Dia 13cm.

1400.571 • CTN 3





1



2



3



4

1. RED UTENSIL POT

Colour coated steel.
Swing ticket.
Size: H 17 x Dia 13cm.

1400.573 • CTN 3

3. RED STORAGE 3.1 LT

Colour coated steel. Airtight silicone seal.
Interchangeable labels. Swing ticket.
Capacity 3.1L. Size: H 24 x Dia 15.3cm.

1400.110 • CTN 2

2. RED LARGE STORAGE 3.7 LT

Colour coated steel. Airtight silicone seal.
Interchangeable labels. Swing ticket.
Capacity 3.65L. Size: H 19 x Dia 19.5cm.

1400.593 • CTN 2

4. RED STORAGE 1.9 LT

Colour coated steel. Airtight silicone seal.
Interchangeable labels. Swing ticket.
Capacity 1.9L. Size: H 22 x Dia 13cm.

1400.111 • CTN 2

FINISHES

We believe in investing in high-grade finishes where it matters most. Working with specialist paint technologists we have perfected our processes so that products withstand the rigours of everyday life and will give many years of use. It's called Vintage for a reason!



5



6

5. RED BREAD BIN

Colour coated steel body. Reversible bread board lid. Sustainably sourced beech wood. Sleeve. Size: H 16 x W 42 x D 25.5cm.

1400.613 • CTN 2

6. RED COMPOST CADDY

Colour coated steel. Filter to neutralize odour. Easy to clean plastic liner. Swing ticket. Capacity 3L. Size: H 21 x Dia 18cm.

1400.553 • CTN 3

TYPHOON®

LIVING

LIVING



The Living Range is not only practical but looks beautiful with the soft pastel colours of cream, blue and putty. Made from hardwearing and durable coated steel, the high quality manufacture creates a strong, seamless construction. The bamboo wood lid is sourced from sustainable forests and has a silicone seal on the tea, coffee, sugar and biscuit storage to keep contents fresh.







LIVING BLUE TEA STORAGE

Swing ticket. Capacity 1L.
Size: H 14 x Dia 12cm.

1400.970 • CTN 6

LIVING BLUE COFFEE STORAGE

Swing ticket. Capacity 1L.
Size: H 14 x Dia 12cm.

1400.971 • CTN 6

LIVING BLUE SUGAR STORAGE

Swing ticket. Capacity 1L.
Size: H 14 x Dia 12cm.

1400.972 • CTN 6

LIVING BLUE UTENSIL POT

Swing tag. Size: H 15 x Dia 12.5cm.

1401.740 • CTN 4

LIVING BLUE COOKIE STORAGE

With airtight seal. Swing tag.
Capacity 3.4L. Size: H 18 x Dia 16cm.

1401.741 • CTN 4



LIVING BLUE PASTA STORAGE

With airtight seal. Swing tag.
Capacity 2.5L. Size: H 27 x Dia 11cm.

1401.742 • CTN 4

LIVING BLUE BREAD BIN

Swing ticket.
Size: H 16 x W 33.5 x D 18cm.

1400.973 • CTN 2



NEW

LIVING BLUE STOVE TOP KETTLE

Soft touch handle for easy lifting.
Folding handle for easy storage.
Quick flip spout cap that whistles once water has boiled. Suitable for all hob types including induction.
Sleeve. Capacity 2.5L.

1401.164 • CTN 2



NEW

LIVING BLUE SCALES

Colour coated steel body. Easy to read dial face. Stainless steel bowl. Weighs up to 4kg /8lbs.
Gift box. Size: W 15 x H 26 x D22cm.

1400.147 • CTN 4



NEW
**LIVING BEECHWOOD BLUE
 SOLID SPOON**

Header card.
 Size: L 30cm.

1401.681 • CTN 6



NEW
**LIVING BEECHWOOD BLUE
 SLOTTED SPOON**

Header card.
 Size: L 30cm.

1401.682 • CTN 6



NEW
**LIVING BEECHWOOD BLUE
 TURNER**

Header card.
 Size: L 30cm.

1401.683 • CTN 6



NEW
**LIVING BEECHWOOD BLUE
 SLOTTED TURNER**

Header card.
 Size: L 30cm.

1401.684 • CTN 6



NEW
**LIVING BEECHWOOD BLUE SET OF 3:
 SPOON, SLOTTED SPOON AND TURNER**

Gift box. Size: W 19.3 x H31.3 x D3cm.

1401.685 • CTN 6





LIVING CREAM TEA STORAGE

Swing ticket. Capacity 1L.
Size: H 14 x Dia 12cm.

1400.974 • CTN 6

LIVING CREAM COFFEE STORAGE

Swing ticket. Capacity 1L.
Size: H 14 x Dia 12cm.

1400.975 • CTN 6

LIVING CREAM SUGAR STORAGE

Swing ticket. Capacity 1L.
Size: H 14 x Dia 12cm.

1400.976 • CTN 6

NEW

LIVING CREAM UTENSIL POT

Swing tag. Size: H 15 x Dia 12.5cm.

1401.743 • CTN 4

NEW

LIVING CREAM COOKIE STORAGE

Airtight seal. Bamboo lid.
Swing tag. Capacity 3.4L.
Size: H 18 x Dia 16cm.

1401.744 • CTN 4



NEW

LIVING CREAM PASTA STORAGE

Airtight seal. Bamboo lid.
Swing tag. Capacity 2.5L.
Size: H 27 x Dia 11cm.

1401.745 • CTN 4

LIVING CREAM BREAD BIN

Bamboo lid. Swing tag.
Size: H 16 x W 33.5 x D 18cm.

1400.977 • CTN 2



NEW

LIVING CREAM SCALES

Colour coated steel body. Easy to read dial face. Stainless steel bowl. Weighs up to 4kg.
Gift box. Size: W 15 x H 26 x D 22cm.

1400.148 • CTN 4



NEW

LIVING CREAM STOVE TOP KETTLE

Soft touch handle for easy lifting. Folding handle for easy storage. Quick flip spout cap that whistles once water has boiled. Suitable for all hob types including induction.
Sleeve. Capacity 2.5L.

1401.165 • CTN 2



NEW

**LIVING BEECHWOOD CREAM
SOLID SPOON**

Header card.
Size: L 30cm.

1401.686 • CTN 6



NEW

**LIVING BEECHWOOD CREAM
SLOTTED SPOON**

Header card.
Size: L 30cm.

1401.687 • CTN 6



NEW

**LIVING BEECHWOOD CREAM
TURNER**

Header card.
Size: L 30cm.

1401.688 • CTN 6



NEW

**LIVING BEECHWOOD CREAM
SLOTTED TURNER**

Header card.
Size: L 30cm.

1401.689 • CTN 6



NEW

**LIVING BEECHWOOD CREAM SET OF 3:
SPOON, SLOTTED SPOON AND TURNER**

Gift Box. Size: W 19.3 x H31.3 x D3cm.

1401.690 • CTN 6





LIVING PUTTY TEA STORAGE

Swing ticket. Capacity 1L.
Size: H 14 x Dia 12cm.

1400.978 • CTN 6

LIVING PUTTY COFFEE STORAGE

Swing ticket. Capacity 1L.
Size: H 14 x Dia 12cm.

1400.979 • CTN 6

LIVING PUTTY SUGAR STORAGE

Swing ticket. Capacity 1L.
Size: H 14 x Dia 12cm.

1400.980 • CTN 6

NEW

LIVING PUTTY UTENSIL POT

Swing tag. Size: H 15 x Dia 12.5cm.

1401.746 • CTN 4

NEW

LIVING PUTTY COOKIE STORAGE

Airtight seal. Bamboo lid.
Swing tag. Capacity 3.4L.
Size: H 18 x Dia 16cm.

1401.747 • CTN 4



NEW

LIVING PUTTY PASTA STORAGE

Airtight seal. Bamboo lid.
Swing tag. Capacity 2.5L.
Size: H 27 x Dia 11cm.

1401.748 • CTN 4

LIVING PUTTY BREAD BIN

Bamboo lid. Swing tag.
Size: H 16 x W 33.5 x D 18cm.

1400.981 • CTN 2



NEW
LIVING PUTTY SCALES

Colour coated steel body. Easy to read dial face. Stainless steel bowl. Weighs up to 4kg. Gift box. Size: W 15 x H 26 x D22cm.

1400.146 • CTN 4



NEW
LIVING PUTTY STOVE TOP KETTLE

Soft touch handle for easy lifting. Folding handle for easy storage. Quick flip spout cap that whistles once water has boiled. Suitable for all hob types including induction. Sleeve. Capacity 2.5L.

1401.166 • CTN 2



NEW

LIVING BEECHWOOD PUTTY SOLID SPOON

Header card.
Size: L 30cm.

1401.691 • CTN 6



NEW

LIVING BEECHWOOD PUTTY SLOTTED SPOON

Header card.
Size: L 30cm.

1401.692 • CTN 6



NEW

LIVING BEECHWOOD PUTTY TURNER

Header card.
Size: L 30cm.

1401.693 • CTN 6



NEW

LIVING BEECHWOOD PUTTY SLOTTED TURNER

Header card.
Size: L 30cm.

1401.694 • CTN 6



NEW

LIVING BEECHWOOD PUTTY SET OF 3: SPOON, SLOTTED SPOON AND TURNER

Gift Box. Size: W 19.3 x H31.3 x D3cm.

1401.695 • CTN 6

TYPHOON®
LIVING
OTTO



Otto combines sophisticated matte black with gold to offer elegance and glamour to the worktop. With a hardwearing coated steel exterior, airtight seal to prolong freshness and sustainably sourced bamboo lid, Otto is both practical and stylish.



NEW

OTTO BLACK TEA STORAGE

Airtight silicone seal. Bamboo lid.
Swing tag. Capacity: 1.4L.
Size: D 11 x H 15.5cm.

1401.148 • CTN 6

NEW

OTTO BLACK COFFEE STORAGE

Airtight silicone seal. Bamboo lid.
Swing tag. Capacity: 1.4L.
Size: D 11 x H 15.5cm.

1401.149 • CTN 6

NEW

OTTO BLACK SUGAR STORAGE

Airtight silicone seal. Bamboo lid.
Swing tag. Capacity: 1.4L.
Size: D 11 x H 15.5cm.

1401.150 • CTN 6

NEW

OTTO BLACK BREAD BIN

Bamboo lid.
Swing tag. Size: L 34 x D 19.5 x H 20.5cm.

1401.151 • CTN 2



TYPHOON®

LIVING

HENRIK



Add vibrancy to the home with bright accents of red, a colour pop that will make an interior statement. With tactile embossment and industrial style lid, this range is a welcome fashion addition to the kitchen.



NEW

HENRIK TEA STORAGE

Swing tag. Capacity: 1L.
Size: D 12 x H 12cm.

1401.142 • CTN 6

NEW

HENRIK COFFEE STORAGE

Swing tag. Capacity: 1L.
Size: D 12 x H 12cm.

1401.143 • CTN 6

NEW

HENRIK SUGAR STORAGE

Swing tag. Capacity: 1L.
Size: D 12 x H 12cm.

1401.144 • CTN 6

NEW

HENRIK BREAD BIN

Swing tag. Size: H 23 x W 18 x L 34cm.

1401.145 • CTN 2





COPPER LID

Introducing an industrial feel to the kitchen, the copper touches to this storage range are the perfect accent to add a hint of glamour. With an attractive, on-trend copper lid and badge detail, the range is made from hardwearing coated steel.



COPPER LID TEA STORAGE

Swing ticket. Capacity 1L.
Size: H 12 x Dia 12cm.

1401.655 • CTN 6



COPPER LID COFFEE STORAGE

Swing ticket. Capacity 1L.
Size: H 12 x Dia 12cm.

1401.656 • CTN 6



COPPER LID SUGAR STORAGE

Swing ticket. Capacity 1L.
Size: H 12 x Dia 12cm.

1401.657 • CTN 6

COPPER LID BREAD BIN

Swing ticket.
Size: H 23 x W 18 x L 34cm.

1401.658 • CTN 2



EMBOSSED



With a silky smooth matte finish, and a tactile embossment, this storage will look superb on the kitchen worktop. Made from hardwearing and durable colour coated steel, this range is perfect for everyday use.

The bamboo wood lid adds warmth and has anti-bacterial properties, with a silicone seal on the tea, coffee and sugar storage to keep contents fresh.



EMBOSSED WHITE TEA STORAGE

Swing ticket. Capacity: 1.35L.
Size: H 15.5 x Dia 12cm.

1401.659 • CTN 6



EMBOSSED WHITE COFFEE STORAGE

Swing ticket. Capacity: 1.35L.
Size: H 15.5 x Dia 12cm.

1401.660 • CTN 6



EMBOSSED WHITE SUGAR STORAGE

Swing ticket. Capacity: 1.35L.
Size: H 15.5 x Dia 12cm.

1401.661 • CTN 6

EMBOSSED WHITE BREAD BIN

Swing ticket. Size: H 26 x Dia 26cm.

1401.662 • CTN 2





PREMIUM UTENSILS

With an attractive copper detail, the premium utensils not only look great but are very practical too. Made from durable nylon with a beech wood handle, they are ideal for non-stick cookware and are heat resistant up to 200°C. Odour and stain resistant.



PREMIUM NYLON & BEECH WOOD LADLE COPPER

Header card. Size L 32cm.

1401.650 • CTN 6



PREMIUM NYLON & BEECH WOOD SLOTTED SKIMMER COPPER

Header card. Size L 37cm.

1401.651 • CTN 6



PREMIUM NYLON & BEECH WOOD SOLID SKIMMER COPPER

Header card. Size L 37cm.

1401.652 • CTN 6



PREMIUM NYLON & BEECH WOOD SLOTTED SPOON COPPER

Header card. Size L 37cm.

1401.653 • CTN 6



PREMIUM NYLON & BEECH WOOD SOLID SPOON COPPER

Header card. Size L 37cm.

1401.654 • CTN 6



PREMIUM UTENSILS

With an attractive gold detail, the Premium Utensils not only look great but are very practical too. Made from durable nylon with a beech wood handle, they are ideal for non stick cookware and are heat resistant up to 200°C. Odour and stain resistant



NEW

PREMIUM NYLON & BEECH WOOD LADLE WITH INTEGRAL STRAINER GOLD

Header card. Size L 32cm.

1401.156 • CTN 6



NEW

PREMIUM NYLON & BEECH WOOD SLOTTED SKIMMER GOLD

Header card. Size L 37cm.

1401.152 • CTN 6



NEW

PREMIUM NYLON & BEECH WOOD SOLID SKIMMER GOLD

Header card. Size L 37cm.

1401.153 • CTN 6



NEW

PREMIUM NYLON & BEECH WOOD SLOTTED SPOON GOLD

Header card. Size L 37cm.

1401.155 • CTN 6



NEW

PREMIUM NYLON & BEECH WOOD SOLID SPOON GOLD

Header card. Size L 37cm.

1401.154 • CTN 6



7 PIECE UTENSIL SET

Gift box.

1400.306

- Set contains:
- Solid spoon
 - Slotted turner
 - Skimmer
 - Solid turner
 - Slotted spoon
 - Ladle
 - Spaghetti server

NYLON & BEECHWOOD UTENSILS

Made from durable nylon with a beechwood handle. Ideal to use with non stick cookware. Odour and stain resistant. Heat resistant up to 200°C



SOLID SPOON

Size: L 34.5cm. Swing ticket.

1401.638 • CTN 6



SLOTTED SPOON

Size: L 34.5cm. Swing ticket.

1401.639 • CTN 6



SLOTTED TURNER

Size: L 35cm. Swing ticket.

1401.636 • CTN 6



SKIMMER

Size: L 34.5cm. Swing ticket.

1401.635 • CTN 6



SOLID TURNER

Size: L 35cm. Swing ticket.

1401.637 • CTN 6



SPAGHETTI SPOON

Size: L 33cm. Swing ticket.

1401.640 • CTN 6



LADLE

Size: L 30.5cm. Swing ticket.

1401.634 • CTN 6



SOLUTIONS TOOLS

Typhoon Solutions are multi-functional, ergonomic kitchen tools specially designed for a multitude of cooking tasks. Designed to be both comfortable and trend led, this range offers a clean, minimal look for the kitchen.





1



2



3



4



5

NEW

1. Y PEELER

Beechwood handle.
Header card.
Size: L 14.5 x H 3 x W 7cm.

1400.067 • CTN 6

NEW

4. LEMON SQUEEZER

Beechwood handle.
Header card.
Size: L 17 x W 4.5 x H 4cm.

1400.070 • CTN 6

NEW

2. PIZZA CUTTER

Beechwood handle.
Header card.
Size: L 18 x H 3 x W 7cm.

1400.069 • CTN 6

NEW

5. SAFETY CAN OPENER

Beechwood handle.
Header card.
Size: L 16 x W 7 x H 4.5cm.

1400.071 • CTN 6

NEW

3. GARLIC PRESSER

Beechwood handle.
Header card.
Size: L 17 x H 4 x D 5cm.

1400.068 • CTN 6

Save time and space in your kitchen with our multi-functional utensils.



6



7



8



9

NEW**6. TURNER & HERB STRIPPER**

Integral herb stripper and food cutter.
Header card.

Size: L 31 x H 5 x W 8.5cm.

1400.072 • CTN 6

NEW**8. SPAGHETTI CLAW & MEASURER**

With spaghetti measurer.
Header card.

Size: L 30 x W 8.5 x H 4cm.

1400.075 • CTN 6

NEW**7. MASHER & SKIMMER**

Dual design for mashing
and skimming. Header card.

Size: L 30 x H 7 x D 10cm.

1400.073 • CTN 6

NEW**9. LADLE & STRAINER**

Integral strainer and pouring lip.
Header card.

Size: L 28 x H 8 x W 11cm.

1400.074 • CTN 6



NEW

1. NYLON FOOD TONGS 9 INCH

Locking mechanism. Header card.
Size: L 31 x H 4 x D 7cm.

1400.076 • CTN 6

NEW

2. NYLON FOOD TONGS 12 INCH

Locking mechanism. Header card.
Size: L 27.5 x H 4 x W 3cm.

1400.077 • CTN 6



NEW

3. KITCHEN SCISSORS

Features bottle opener and bottle grip.
With protective cover. Header card.
Size: L 22 x H 2 x W 9.5cm.

1400.078 • CTN 6

NEW

4. MULTI-BLADES SHEARS

Ideal for chopping and trimming herbs.
With cleaning scraper and protective cover. Header card.
Size: L 24 x H 2.5 x W 8cm.

1400.079 • CTN 6





5



6

NEW

5. SMART OPENER

Works for bottle caps, screw tops and ring pulls. Header card.
Size: L 15 x H 2.5 x W 4.5cm.

1400.080 • CTN 6

NEW

6. NESTING MEASURING SPOONS

Measures in tablespoons and millilitres. Nesting for easy storage. Header card.
Size: L 14.5 x H 2 x W 5cm.

1400.081 • CTN 6



7

NEW

7. FINGER GRIP PEELER

Precision grip finger mould. Header card.
Size: L 7 x H 3.5 x W 6cm.

1400.083 • CTN 6

NEW

8. SALAD TONGS

Nesting for easy storage. Header card.
Size: L 31 x H 4 x D 6.5cm.

1400.084 • CTN 6

8



SEASONINGS

Make dishes burst with flavour and banish the bland! Prepare fresh herbs and spices, infuse and drizzle delicious flavours with our Seasonings range, carefully designed with thoughtful features to simply add zing to your cooking.





1



2



3



4



5



6



7

1. TEAR DROP GLASS DUO DRIZZLER

Handmade glass. Two compartments for oil and vinegar. Gift box. Capacities 250ml and 100ml. Size: H 28 x Dia 7cm.

1401.361 • CTN 6

2. LONG NECK GLASS DRIZZLER

Handmade glass. Stainless steel and silicone pourer. Gift box. Capacity 280ml. Size: H 19 x Dia 7.5cm.

1401.352 • CTN 6

3. SEASONINGS OIL INFUSER

To make your own infused oils. Mouth-blown, hand finished borosilicate glass bottle and infuser. Twist open and close silicone bung. Gift box. Capacity 90ml. Size H 17.5 x Dia 5.5cm.

1401.364 • CTN 6

4. HACHOIR SET

Durable beechwood. Stainless steel double blade mezzaluna. Sleeve. Sizes: Hachoir H 2.5 x W 20 x D 20cm. Mezzaluna L 14cm.

1401.415 • CTN 6

5. CORK POURER

Pourer fits bottle necks of approx 2cm. The attractive way to pour oil, vinegar, wine and spirits. Stainless steel. Cork seal. Clear dust cap. CDU of 36 pieces. Size H 6 x Dia 2.5cm.

1401.369 • CTN 36

6. STAINLESS STEEL POURER

Pourers fit all Typhoon glass drizzlers. Stainless steel. Silicone seal. Clear dust cap. CDU of 36 pieces. Size H 8 x Dia 2.5cm.

1401.372 • CTN 36

7. OIL MISTER

Air-powered oil mister guarantees that your oil is pure and free from chemicals. Mesh filter minimises the risk of the oil mister becoming clogged, resulting in less wastage and cleaning, using the high grade food-safe body with soft touch collar and cap. Stainless steel base. Gift box. Capacity 350ml. Size H 17 x Dia 8cm.

1401.365 • CTN 6

WORK SURFACE PROTECTORS



These toughened glass Work Surface Protectors are heat resistant to 180°C so can be used for saucepans straight from the hob or roasting trays from the oven. The non-slip feet help secure the glass on the worktop when preparing vegetables and meats. They are also great for presenting hot or cold food. They are easy to clean, odour and stain resistant.



MARBLE RECTANGULAR GLASS WORKTOP PROTECTOR

Scratch resistant tempered glass.
Non-slip silicone feet.
Heat resistant to 180°C.
PVC sleeve with header card.
Size: W40 x H30cm.

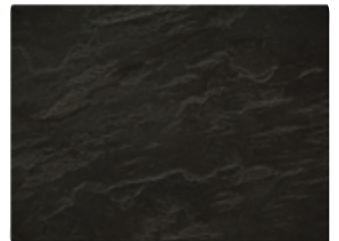
1401.419 • CTN 6



SLATE RECTANGULAR GLASS WORKTOP PROTECTOR

Scratch resistant tempered glass.
Non-slip silicone feet.
Heat resistant to 180°C.
PVC sleeve with header card.
Size: W40 x H30cm.

1401.420 • CTN 6



BRICK RECTANGULAR GLASS WORKTOP PROTECTOR

Scratch resistant tempered glass.
Non-slip silicone feet.
Heat resistant to 180°C.
PVC sleeve with header card.
Size: W40 x H30cm.

1401.421 • CTN 6



SCALES



Created in the kitchen with the UK-based Typhoon design team, the Vision kitchen scales offer a clear and simple way to measure and read food and liquid measurements at a quick glance.

With precision weight measurement, the scales accurately weigh in kg/g and lb/oz. In addition the scale has an aquatronic function for measuring fluids in ml and fl oz. The add-and-weigh function offers the benefit of weighing multiple ingredients in one bowl. The easy-to-read display is controlled by the soft-touch keypad, which also features low battery and overload indicators.

After 60 seconds of inactivity, the scale will automatically turn off. The large high quality stainless steel bowl has a curved shape for easy pouring of ingredients, and can double up as an independently functional mixing bowl or serving bowl.



VISION RED SCALES

High gloss coloured ABS body. Stainless steel bowl. Weighs up to 5kg/11lbs. Weighs in Kg/g and lb/oz. Weighs liquids in ml and fl oz. Comes with 2 x AAA batteries. Gift box. Size: H 19 x W 24.5 x D 24cm.

1400.140 • CTN 2

COOKS AID:

The clever feature of add-and-weigh allows you to weigh and mix wet and dry ingredients all in one bowl!

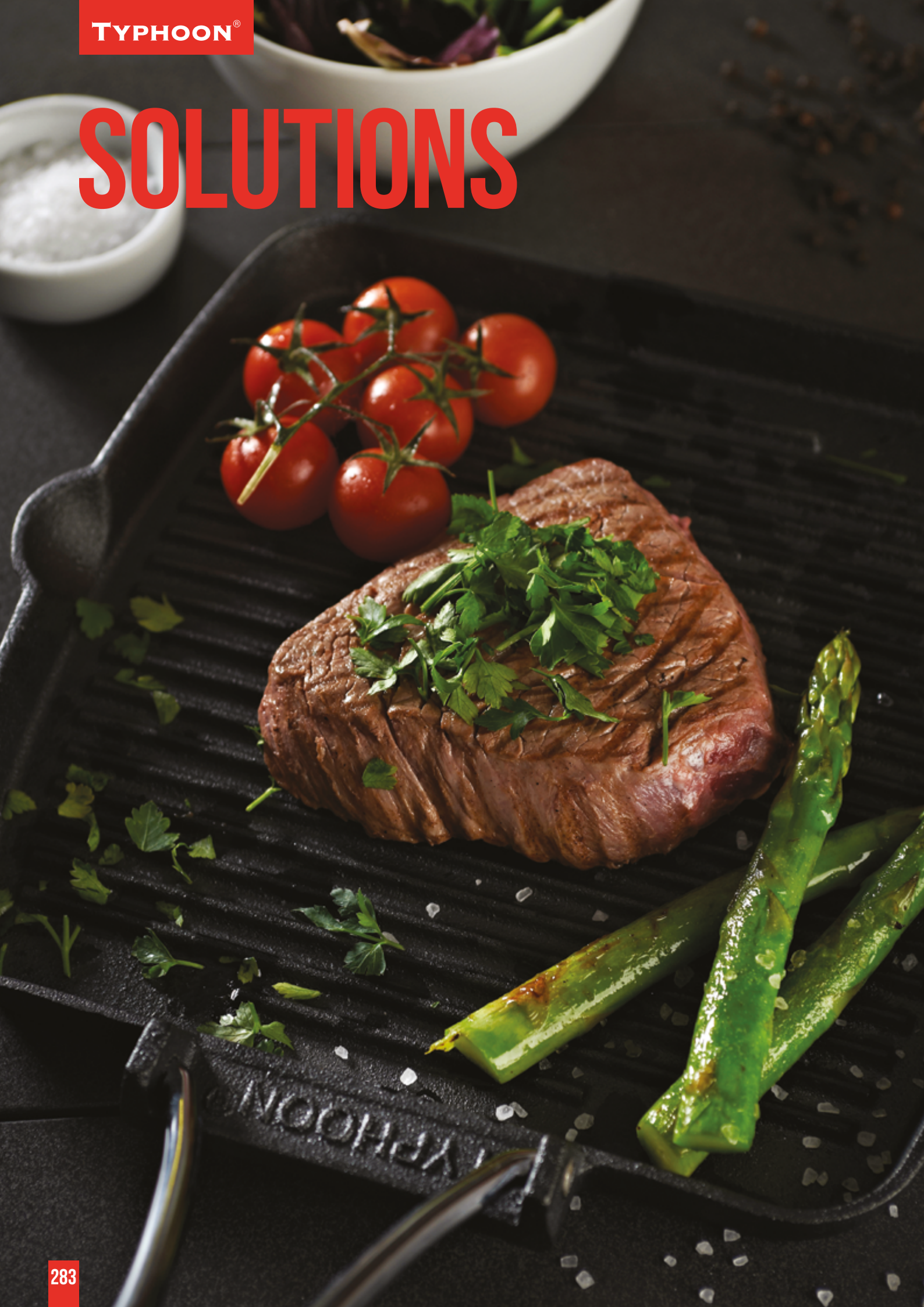


VISION WHITE SCALES

High gloss coloured ABS body. Stainless steel bowl. Weighs up to 5kg/11lbs. Weighs in Kg/g and lb/oz. Weighs liquids in ml and fl oz. Comes with 2 x AAA batteries. Gift box. Size: H 19 x W 24.5 x D 24cm.

1400.141 • CTN 2

SOLUTIONS



A range of kitchen essentials for the discerning cook. From day to day basics to specialist cookware, whatever your cooking needs, we have a perfect solution.

WHY COOK WITH CAST IRON?

Cast iron is non-stick
 You can use less oil with cast iron
 Versatile - use on the hob or in the oven
 Cast iron will last forever if looked after
 Cast iron provides even cooking temperatures
 Economical cooking - cast iron retains heat for longer



FOLDING HANDLE SQUARE CHARGRILLER

Pre-seasoned cast iron. Handle folds for compact storage. Suitable for all hobs. Sleeve. Size: H 4 x W 26.5 x D 26.5cm.

1400.320 • CTN 4



FOLDING HANDLE RECTANGULAR CHARGRILLER

Pre-seasoned cast iron. Handle folds for compact storage. Suitable for all hobs. Sleeve. Size: H 4 x W 36 x D 22.5cm.

1400.321 • CTN 4



LARGE REVERSIBLE GRILL PLATE

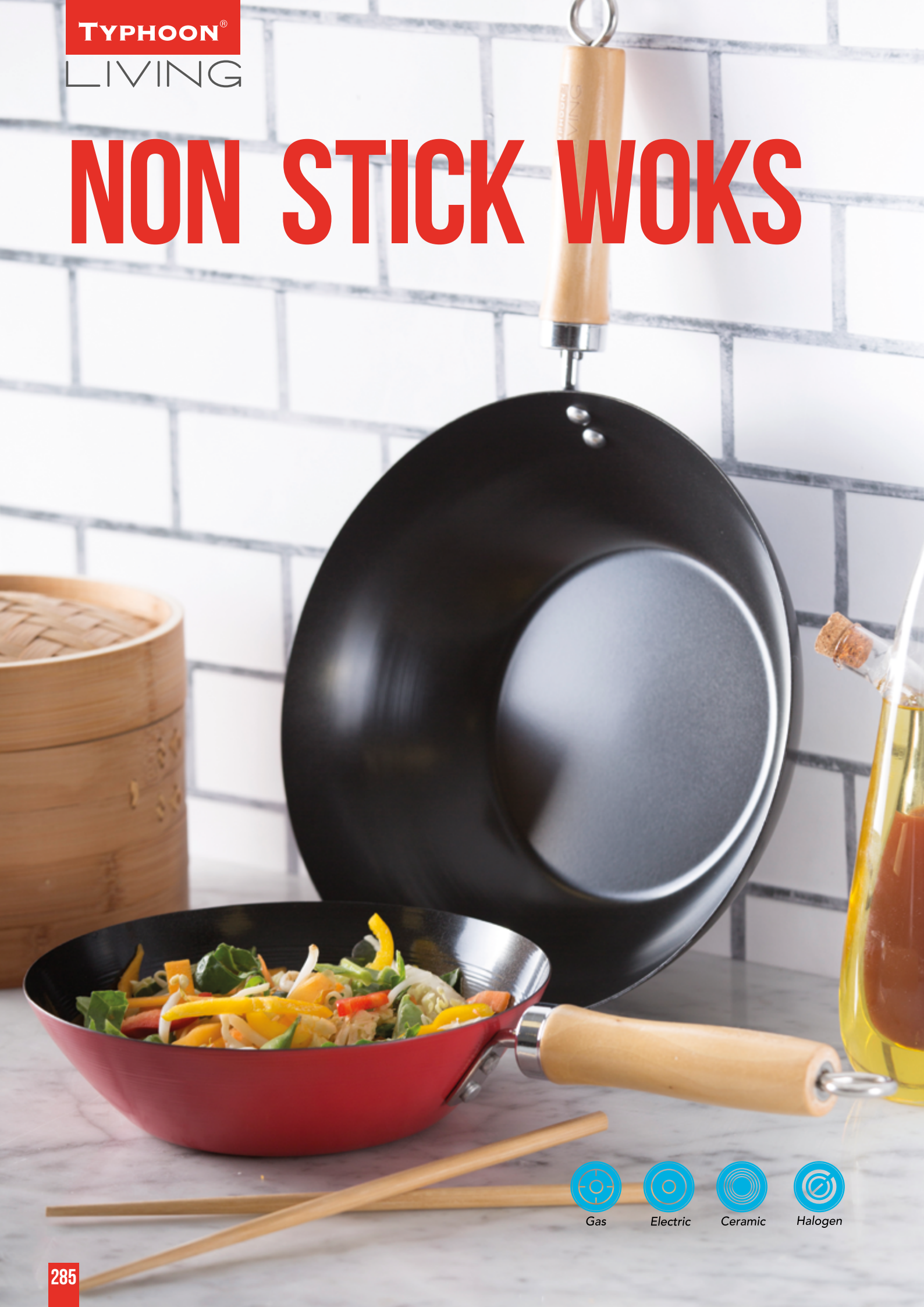
Pre-seasoned cast iron. Reversible smooth and griddle surfaces. Suitable for all hobs (except induction). Sleeve. Size: H 2 x W 48 x D 26cm.

1400.322 • CTN 2

TIP FOR GRILL PLATES:

To keep your kitchen smelling fresh when chargrilling meat and fish, place a small amount of water around the edge of the plate, this will stop the grease drying and smoking.

NON STICK WOKS



Gas



Electric



Ceramic



Halogen

The Typhoon Living Woks have a flat base for cooking stability and a Quantum 2 non stick finish, for long lasting non stick performance. The spun carbon steel body conducts heat efficiently and creates an even temperature quickly. The comfortable wooden handle has an easy grip for safety and a secure riveted handle with a hanging hook. Uses less oil for healthier cooking.



LIVING 11" GREY WOK

Sleeve. Size: H 10 x W 45.5 x Dia 28cm.

1400.987 • CTN 6



LIVING 9" GREY WOK

Sleeve. Size: H 8.5 x W 41 x Dia 23cm.

1400.990 • CTN 6



LIVING 11" RED WOK

Sleeve. Size: H 10 x W 45.5 x Dia 28cm.

1400.986 • CTN 6



LIVING 9" RED WOK

Sleeve. Size: H 8.5 x W 41 x Dia 23cm.

1400.989 • CTN 6



LIVING 11" BLACK WOK

Sleeve. Size: H 10 x W 45.5 x Dia 28cm.

1400.985 • CTN 6



LIVING 9" BLACK WOK

Sleeve. Size: H 8.5 x W 41 x Dia 23cm.

1400.988 • CTN 6

ASIAN ACCESSORIES





ROOKIE STIX GREEN/GREY/PINK/BLUE

This Typhoon classic has had a burst of colour with four eye catching colours! Add fun to the dining table with these easy to use chopsticks. (Assorted colours per CDU) Made from ABS plastic. Size: L 20cm

1400.349 • CTN 36

ROOKIE STIX RED/BLACK

CDU of 36 pcs. Typhoon's classic 'Easy to use Chopsticks'. Size: L 20cm.

1400.350 • CTN 36



8" DOUBLE TIER STEAMER

Environmentally friendly bamboo. 100% natural components. Sleeve. Size: H 15.5 x Dia 20cm.

1400.360 • CTN 6



10" DOUBLE TIER STEAMER

Environmentally friendly bamboo. 100% natural components. Sleeve. Size: H 16 x Dia 26cm.

1400.361 • CTN 6

TROLLEYS



Typhoon trolleys are a colourful and contemporary way of eliminating the need for a plastic carrier bag. They are perfect for transporting shopping on and off trains, buses and in and out of cars whilst keeping your items safely tucked away.

The lightweight trolleys are foldable and easy to store. With a strong, easy to wipe clean fabric, the large drawstring opening makes it easy to fill with your grocery shopping. The velcro closure keeps your goods secured and out of the rain.



NAVY SHOPPING TROLLEY

1401.936 • CTN 4



GREY SHOPPING TROLLEY

1401.938 • CTN 4



RED SHOPPING TROLLEY

1401.937 • CTN 4

Frame folds for easy storage. Lightweight for ease of movement. Strong, easy to wipe clean fabric. Generous capacity up to 25kg/55lbs. Size: H 95 x W 32 x D 31cm.



POPPY SHOPPING TROLLEY

Retractable and adjustable height handle.
Insulated cooler compartment.

Frame folds for easy storage. Lightweight for ease of movement.

Generous capacity up to 20kg.

Size: H 95 x W 36 x Dia 30cm.

1401.930 • CTN 2

POCKET

SHOPPING BAGS

The Typhoon reusable pocket bag is so handy and versatile to use. No need to use plastic carrier bags when the reusable bag is compact to carry in a pocket or handbag. Made from super strong, lightweight fabric, the bag folds to a small size making it more convenient to carry than bigger shopping bags. The generous capacity is ideal for grocery shopping or everyday essentials.



POCKET SHOPPING BAGS

Three assorted colours of navy, red and grey. Super strong shopping bags. Folds up small to fit in a pocket. CDU of 36 bags. Generous capacity, holds up to 10kg/22lbs. Size H 60 x W 45cm

1401.940 • CTN 36



POINT OF SALE

Improve your shop display with our A5 POS featuring beautiful range photography.



VINTAGE MAYFAIR A5 POS
6500.069



VINTAGE COPPER A5 POS
6500.068



TYPHOON WOK STAND
1404.984

TYPHOON®
www.typhoonhousewares.co.uk

TYPHOON®
www.typhoonhousewares.co.uk

TYPHOON®
www.typhoonhousewares.co.uk

TYPHOON®
www.typhoonhousewares.co.uk

TYPHOON SHELF STRIPS
6500.025

NOTES

A series of horizontal dotted lines for writing notes.



Designed in
Great Britain

TYPHOON HOUSEWARES

26-32 Spitfire Road, Triumph Trading Park, Speke Hall Road, Liverpool L24 9BF England

Telephone: +44 (0)151 486 1888 Email: sales@rayware.co.uk

Web: www.typhoonhousewares.com Order online: www.rayware-trade.co.uk