



## Gifts Under The Tree Should Come From Under The Dome

*There are gifts for golfers and non-golfers alike at our newly renovated Dome.*

At Golf Headquarters and Woods to Wedges you will find the hottest names in golf in our over 6500 square foot retail store at the guaranteed lowest prices. We stock equipment from all the major brands like, Callaway, Cleveland, Cobra, Ping, Taylor Made, Mizuno, Srixon and Titleist, Puma, Adidas, Under Armour, Sun Mountain and more. You can definitely outfit your golfer or non golfer at our proshop this holiday season.

For the golfer who has everything, Woods to Wedges is WNY's #1 choice for the most advanced and accurate custom fittings, highest-quality club repairs, instruction and the best personal service for golfers of every level. We are the place for Trackman, the golf industry standard for accurate and advanced club fitting along with Sam Putt Lab for our putter fittings. The same technology trusted by the tour players for their games.

The newly renovated golf dome featuring brand new hitting mats, range balls and state of the art lights will be a definite destination this Winter season. The new restaurant and bar Rule 26 is located inside the dome where you can eat, drink and enjoy time with family and friends. It is open daily for lunch and dinner, with happy hour specials.

***Don't forget, Gift Certificates always make the perfect gift!***

All this at The Dome located at  
8230 Wehrle Dr. Williamsville, NY

*We will see you at the dome!*

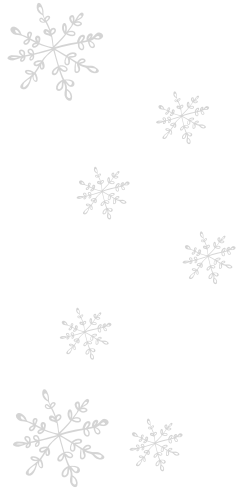
**Like us on Facebook**

Call 633-2626 or 716-632-3021 for more information.

**\$100 INSTANT SAVINGS**

**\$70 INSTANT SAVINGS**

**\$50 INSTANT SAVINGS**



## Bushnell Tour X Rangefinder

Slope Technology when you want it, tournament legal when you need it.

A Tour X exclusive, Exchange Technology lets you use our patented Slope Technology when the red faceplate is installed and functions as a USGA conforming device when the black faceplate is installed.

Dual Display Technology allows the user to easily toggle between the bright red Vivid Display or sharp black display based on lighting conditions or personal preference.

~~WAS \$499.99~~  
**NOW \$399.99**



## Bushnell Tour Z6 JOLT Rangefinder

Features PinSeeker with JOLT Technology that provides the golfer with short vibrating bursts to reinforce the laser has locked on the flag.

Instantaneously acquire flags up to 450 yards away with extreme speed and incredible range.

Add to that the unmatched precision of Second Generation E.S.P. (Extreme. Speed. Precision), and the clarity of VDT (Vivid Display Technology).

~~\$399.99~~

*Price too low to advertise. See your local NGBA Retailer for Price*



## Bushnell NEO iON

Small, sleek comfortable design with long battery life.

Preloaded with over 35,000 courses in more than 30 countries, no downloads and no membership fees ever.

Available in: Charcoal, Black, White

~~WAS \$199.99~~  
**NOW \$149.99**

**NOVEMBER 3  
thru  
JANUARY 1**

**\$50 INSTANT SAVINGS**

**\$25 INSTANT SAVINGS**

**\$50 INSTANT SAVINGS**



## Bushnell NEO Ghost

Pocket sized, easy-to-use Golf GPS. Preloaded with over 35,000+ courses. Easy-to-read front/center/back distances and up to four hazard distances per hole. No downloads and no membership fees ever.

Available in: Black, White, Neon Green, Charcoal, Orange

~~WAS \$99.99~~  
**NOW \$49.99**



## Bushnell Tour V4 Patriot Pack

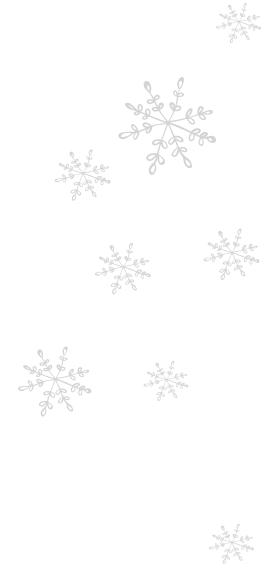
Experience the standard in distance measuring with a Tour v4 Patriot Pack Laser Rangefinder. Now in a smaller, more ergonomic frame, the Tour v4 features trusted PinSeeker with JOLT Technology to provide instant feedback once the flag is picked up. Multi-coated HD Optics with 5x magnification provide yardage accurate to within a yard from a range of 5-1,000 yards. Lock in your distance with a Bushnell® Tour v4 Patriot Pack Laser Rangefinder.

~~WAS \$299.99~~  
**NOW \$274.99**

## Bushnell Tour V4 Slope Patriot Pack

Maximize precision and accuracy with a Tour v4 Slope Patriot Pack Laser Rangefinder. Now in a smaller, more ergonomic frame, the Tour v4 Slope features PinSeeker with JOLT Technology to provide instant feedback once the flag is picked up. Patented Slope technology provides compensated distances based on incline/decline for exact yardage. HD Optics with 5x magnification equips Bushnell® Tour v4 Slope Laser Rangefinders with unmatched quality.

~~WAS \$399.99~~  
**NOW \$349.99**



**NOVEMBER 22  
thru  
JANUARY 1**



**BUY 3  
GET 1**

**2 for \$40**

**2 for \$30**

**Plus FREE Personalization**



## Bridgestone B330 Golf Balls

Bridgestone's 2016 B330 Family features Bridgestone's new TOUR Core that is 6% larger and utilizes a steeper gradient in softness from the inner part of the core to the outer region, to generate faster ball speed and less spin off the driver than ever before. In fact, Bridgestone's proprietary gradational compression technology in its core allows the company to accomplish in one layer what other ball makers accomplish in two or three layers, leading to a smoother energy transfer and more power.

- Valid on all stock B330 models
- Imprint colors available: Black, Blue, Red, Green
- Maximum of 17 characters per line, up to 3 lines of text (ALL CAPS)
- All 4 dozen must be personalized with the same imprint and ink color.
- Limit 1 offer per personalization

**BUY 3, GET 1 FREE**  
\$44.99/dozen



## Bridgestone eSeries Golf Balls

The e-Series models continue to deliver the exceptional flight performance golfers trust and expect and the introduction of Bridgestone's proprietary, breakthrough WEB Dimple Technology brings added distance across the line. WEB Dimple Technology covers will be featured across the 2015 e-Series family. Bridgestone's newest, proprietary design utilizes a cutting-edge "spidering" pattern that affords 10% more dimple-surface-coverage than the previous e-Series models. This new pentagonal, WEB pattern combined with the aerodynamics of our Dual Dimple design reduces drag, resulting in a more penetrating ball flight and greater distance.

**2 dozen for \$40**



## Bridgestone Lady Precept Golf Balls

After more than 15,000 live fittings with lady golfers, Bridgestone Golf has developed a ladies specific model engineered for moderate swing speeds. The new Lady Precept is designed to produce higher launch and lower spin off the driver for optimum distance and carry while providing soft feel from tee to green.

**2 dozen for \$30**

### **FREE PERSONALIZATION:**

**B330, eSeries, Extra Soft or Lady Precept. 1 dozen minimum. Thru 12/31/16**

Imprint colors available: Black, Blue, Red, Green

- Maximum of 17 characters per line, up to 3 lines of text (ALL CAPS)
- All 4 dozen must be personalized with the same imprint and ink color.
- Limit 1 offer per personalization



## Callaway 200 Laser Rangefinder

The Callaway 200 Laser Rangefinder, featuring P.A.T. (Pin Acquisition Technology) delivers precise distance measurements in a sleek, compact design. P.A.T. locks onto the flagstick up to 275 yards away, ensuring accuracy even when trees and other objects are in the background. The Callaway 200 is simple, easy to use, and offers pin-point accuracy at a valued price.

### FEATURES:

- 6X magnification
- Maximum Range: 5-800 yards (5-275 yards to pin)
- Superior accuracy to +/- 1
- Measure in Yards or Meters
- Scan landscape to acquire multiple targets
- Sleek, ergonomic, soft casing design
- Comes equipped with carrying case
- Water and fog resistant
- Dimensions: 3.7"(L) x 2.8"(H) x 1.57"(W)

**\$199.99**



## Callaway 300 PRO Laser Rangefinder

The Callaway 300 Pro Laser Rangefinder delivers ALL the distance measurement features golfers need! Now with Slope Technology, elevation changes are accounted for, ensuring truly accurate distance measurements. Whether your trying to carry that fairway bunker off, or firing at the flagstick of an elevated green, you'll know the true distance for any shot on the course!

### FEATURES:

- Slope Technology: Measures the angle of incline/decline then calculates the slope adjusted distance (can be turned off to conform to USGA rules).
- Exclusive Birdie Technology: Device will "chirp" when locked onto the pin.
- 6X magnification
- Range: 5-1000 yards (5-300 yards to pin)
- Superior accuracy to +/- 1
- Measure in Yards or Meters
- Scan landscape to acquire multiple targets
- Sleek, ergonomic, soft casing design
- Comes equipped with carrying case
- Water and fog resistant
- Dimensions: 3.7"(L) x 2.8"(H) x 1.57"(W)

**\$299.99**



## Callaway FT Launch Hitting Mat

The Callaway® FT Launch Zone™ Hitting Mat's true-turf surface simulates hitting off a real fairway. It also features ultra-durable rubber backing which will protect your clubs from impact scratches and damages. The mat is highly resistant to wear and its heavy weight minimizes slide on impact.

- True Turf surface simulates real fairway
- Highly resistant to wear and tear
- Durable rubber backing reduces shock and protects clubs
- Heavy weight minimizes sliding

**\$34.99**





## Callaway Apparel Full-Zip Wind Jacket

Brave the elements in style in the Callaway Women's Golf Performance Long Sleeve Wind Jacket With Back Ruching. A feminine, flattering fit with two front pockets is enhanced by ruching details along the back and an Opti-Repel barrier against wind and water. (Style: CGJF5016)

- 100% Polyester
- Long Sleeve
- Ruching on back
- Silver Chevron on back collar
- Machine washable
- Imported

Colors: White (shown), Navy, Light Blue

~~\$65.99~~

*Price too low to advertise. See your local NGBA Retailer for Price*



## Callaway Apparel Waffle Fleece

- 100% Polyester
- Long Sleeve
- Mock Neck
- 1/4 Zip
- Silver Chevron heatseal at top center back
- Machine Washable
- Imported
- (Style: CGKF5006)

Colors: Blue (shown), Black, White

~~\$65.99~~

*Price too low to advertise. See your local NGBA Retailer for Price*



## Callaway Apparel Opti-Shield Mock Neck

- 100% Polyester
- Long Sleeve
- Asymmetrical Sleeve Hem
- Reflective Trim Accents
- Reflective Heat Seal Chev Logo on Center Back
- Machine Wash Cold
- Tumble Dry Low
- Imported
- (Style: CGKF4040)

Colors: Soft Pink (shown), Light Azure Blue, Black, White, and Aqua Sky

~~\$75.99~~

*Price too low to advertise. See your local NGBA Retailer for Price*



## Callaway Apparel Printed Opti-Shield Top

If you're looking for quintessential style and unmatched fabric technology, check out the Callaway Women's Golf Performance Long Sleeve Printed Pullover. Enjoy Opti-Dri moisture management and Opti-Shield protection against the sun's ultraviolet rays. (Style:CGKF6048)

- 100% Polyester
- Comfortable Feminine Fit
- Front and back panel print design
- Callaway Chevron TPU Logo on Center Back Collar
- Asymmetrical sleeve cuff for added sun protection
- OptiDri: transfers moisture away from the body to aid in evaporation
- OptiShield 50: creates a layer of protection from the sun's harmful rays
- Machine Wash Cold, Tumble Dry
- Imported

Colors: Bright White / Peacoat (shown), Silver Lining

~~\$80.99~~

*Price too low to advertise. See your local NGBA Retailer for Price*



## Callaway Apparel Waffle-Fleeced 1/4 Zip

Stay warm while on the course with Callaway Men's 1/4" Zip Waffle Fleece Pull-over with Opti-Therm fabric designed to withstand the cold and provide a layer of thermal comfort. (Style: CGKF5049)

- 100% Polyester
- Long Sleeve
- 1/4 Zip
- Mock Collar
- Callaway Tour Embroidery Logo on Left Sleeve
- Machine Washable
- Imported

Colors: Yellow (shown), Heather grey, White, Castlerock Dark Grey, Red, Blue

~~\$65.99~~

*Price too low to advertise. See your local NGBA Retailer for Price*

## Callaway Apparel Long-Sleeved 1/4 Zip Water-Resistant Stretch Windshirt

Stay dry and comfortable while on the course with Callaway Men's Long Sleeved Stretch Windshirt with Opti-Repel fabric resist wind and water creating a barrier of protection against inclement weather and Opti-Stretch to ensure maximum range of motion so garment moves with the golf swing. (Style: CGRF5041)

- 100% Polyester
- 1/4 Zip, Long Sleeve
- Mock Collar, Chest Pocket
- Callaway Tour Heat Seal Logo on Left Sleeve
- Inside Bungee Cord with Toggle on Waist
- Machine Washable
- Imported

Colors: Highrise Light Grey (shown), Blue

~~\$70.99~~

*Price too low to advertise. See your local NGBA Retailer for Price*



## Callaway Apparel Outlast Premium Zip

Along with the wonderful styling this 1/4-Zip Pullover has Outlast technology proactively manages the build up of heat and moisture to help delay the onset of sweat, helping you stay comfortable day and night. (Style: CGKF5034)

- 60 % Polyester / 30% Outlast Polyester / 10% Spandex
- Premium 1/4 Zip Mid Layer Featuring Outlast Technology
- Callaway Tour Raised Seal Logo on Left Sleeve
- Machine Washable
- Imported

Colors: Red (shown), Black, Navy, White, Light Blue

~~\$75.99~~

*Price too low to advertise. See your local NGBA Retailer for Price*



## Callaway Apparel Wind & Water-Resistant Lightweight Stretch Soft Shell

An amazing union of performance and comfort, the stylish Callaway Men's Light Weight Soft Shell Jacket has Opti-Stretch to ensure maximum range of motion so garment moves with the golf swing and Opti-Therm fabric that are designed to withstand the cold and provide a layer of thermal comfort. (Style: CGKF5036)

- 100% Polyester
- Full Zip, Long Sleeve, Mock Collar
- Callaway Tour Heat Seal Logo on Left Sleeve
- Machine Washable
- Imported

Colors: Blue with Black accents (shown), Grey with White accents

~~\$125.99~~

*Price too low to advertise. See your local NGBA Retailer for Price*





## Callaway Big Bertha Fusion Driver

The Big Bertha Fusion Driver is a material change in forgiveness and distance, led by our revolutionary titanium Exo-Cage and ultralight triaxial carbon crown, with a new and innovative shape, and industry-leading aerodynamics.

Forgiveness is more than just high MOI. Callaway engineers have pioneered a new "recipe for ultimate forgiveness" which includes a forgiving shape, a low and deep Center of Gravity, draw bias, an enhanced sweet spot area, high clubhead speed and multiple shaft lengths. The result is the most forgiving driver Callaway has ever created.

**\$399.99**



## Callaway Big Bertha Fusion Fairway Wood

Big Bertha Fusion Fairway Woods reach a new level of forgiveness by fusing the industry-leading, multi-material technologies into one club, with an ultra-light triaxial carbon crown, extremely high MOI design and Callaway's industry-leading Hyper Speed Face Cup.

Big Bertha Fusion pairs ultra-light triaxial carbon crown, that's 78% lighter than a typical steel crown, with a steel body. The fusion of these materials allowed Callaway engineers to position substantially more weight in the perimeter and far back from the face compared to our previous fairway woods, resulting in higher launch and more forgiveness.

**\$249.99**



## Callaway Steelhead XR Irons

The Steelhead XR Irons are where a signature shape meets breakthrough performance with industry-leading, next generation 360 Face Cup. They deliver the finest combination ever of speed, forgiveness, distance and control in a Callaway iron.

FROM  
**\$799.99**

## Callaway Steelhead XR Hybrid

Steelhead XR Hybrids are designed for an unparalleled combination of distance, forgiveness and playability from industry-leading technologies like the Next-Gen Hyper Speed Face Cup and advanced shaping.

**\$219.99**





NOV 17-DEC 31, 2016

BUY ANY TWO  
**SUPERSOFT**  
 GOLF BALL DOZENS  
 FOR  
**\$35**



## Callaway Super Soft

Golf Digest 2015 Hot List Gold Medal Winner! The new and improved Supersoft is Callaway's lowest compression golf ball. It's long, straight, and of course, it's incredibly super soft.

**2 dozen for \$35**



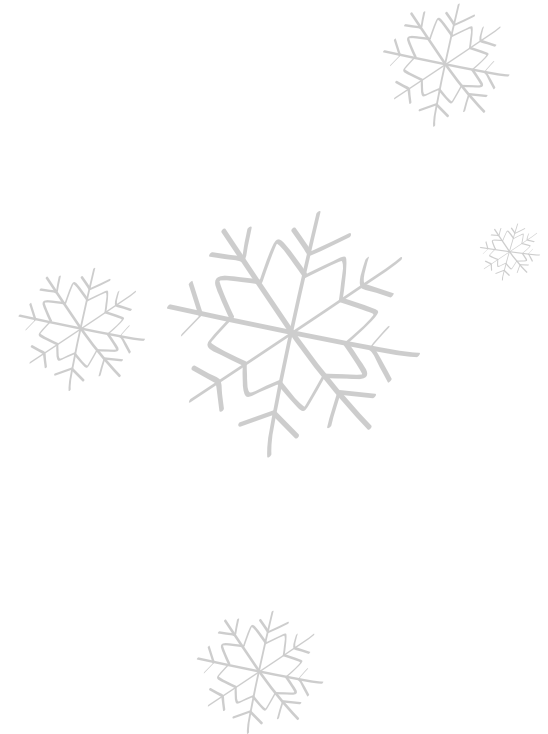
## Callaway Chrome Soft

The new Chrome Soft takes a ball that has completely redefined golf ball performance and elevates it to another level. It has the proprietary Dual SoftFast Core™ for fast ball speed from the driver, 4-piece construction leading to even more control throughout the bag, low compression for extremely soft feel, and a Tour Urethane Cover.

It lets you compress the ball on iron shots for incredibly soft feel, and gives you more spin and pinpoint accuracy from 100 yards and in. And optimized HEX Aerodynamics makes the ball flight even better in all conditions. With Chrome Soft, you're getting more ball speed off the tee, more control from your scoring clubs, and incredibly soft feel.

**\$39.99**

**PLUS FREE  
 PERSONALIZATION**  
 thru 12/31/2016





TOUR SATIN

BLACK SATIN

TOUR RAW

CAVITY BACK  
TOUR SATIN

WOMEN'S  
CAVITY BACK  
TOUR SATIN

## Cleveland RTX-3 Blade

### V SOLE GRINDS ADD SHOT CONSISTENCY AND CONTROL

Three tour-proven grinds feature a V shape with more leading edge bounce to help the club head through the turf faster at impact for crisper feel and more consistent performance. Choose from V-LG (•), V-MG (••), or V-FG (•••).

### NEW ROTEX FACE INCREASES SPIN

The third-generation RTX face features a refined groove shape, a new Rotex micro-milling pattern engineered to optimize spin performance by loft, and Laser Milling. These technologies combine to generate not only the most spin, but the most consistent spin within the limits.

The RTX-3 Blade gets you closer to the hole than any wedge Cleveland Golf has ever made. The blade shape design is ideal for maximizing all-around wedge performance.

Available Finishes: Tour Satin, Black Satin and Tour Raw

Standard Shaft: True Temper Dynamic Gold Wedge Flex

**\$129.<sup>99</sup>**

## Cleveland RTX-3 Cavity Back

The RTX-3 Cavity Back gets you closer to the hole than any wedge Cleveland Golf has ever made. The slightly larger cavity back shape promotes confidence and increases forgiveness.

Available Finish: Tour Satin

Standard Shaft Options: True Temper Dynamic Gold Wedge Flex, Rotex Precision Graphite Wedge Flex

FROM  
**\$129.<sup>99</sup>**

## Cleveland — Womens RTX-3 Cavity Back

The Women's RTX-3 Cavity Back gets you closer to the hole than any wedge Cleveland Golf has ever made. The larger cavity back shape and lightweight graphite shaft promote a high, easy launch.

Available Finish: Tour Satin

Standard Shaft Option: Women's Action Ultralite 50 Wedge Flex

**\$129.<sup>99</sup>**



## Cleveland Smart Sole 2.0

### SMART SOLE C:

Eliminate the chunked wedge. The refined wide and forgiving sole promotes crisp and clean contact for more consistent chip shots from any lie around the green. This club also performs great on full shots from 125 yards and in.

### SMART SOLE S:

Never again will you have to endure the embarrassment of being stuck in the bunker for 2, 3, or 4 shots. The Cleveland Golf Smart Sole 2.0

Sand Wedge offers a forgiving sole with the right amount of bounce and loft to get the ball out of the bunker on your first swing.

FROM  
**\$109.99**



## Cleveland TFi 2135 Mallet Style

### 2135 RAISED ALIGNMENT

By raising the alignment line to the exact radius of the golf ball, or 21.35 mm, we created the most accurate alignment feature ever for a mallet style putter. This alignment feature never moves relative to the golf ball because it is placed at the most optimal position for precision alignment, dead center of the golf ball. Regardless of whether you putt with your eyes behind, directly over, or well over the golf ball, the Cleveland Golf TFi 2135 putter offers you perfect alignment.

### TRUE FEEL INNOVATION

New TFi (True Feel Innovation) face combines a milled, copper-infused face cap over a copolymer insert for the ultimate in feel and consistency across the face.

FROM  
**\$159.99**



## Cleveland TFi 2135 Blade Style

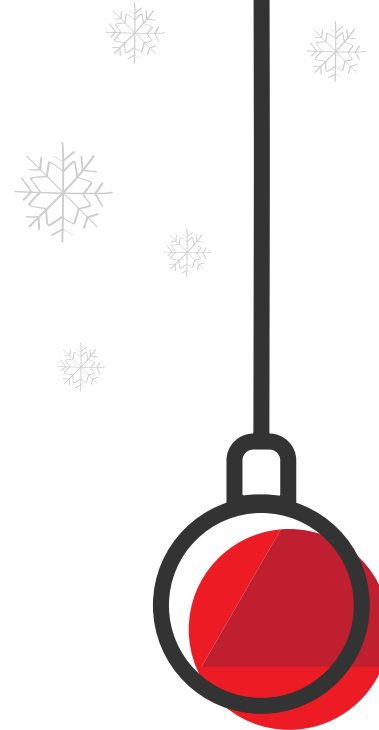
### 2135 RAISED ALIGNMENT

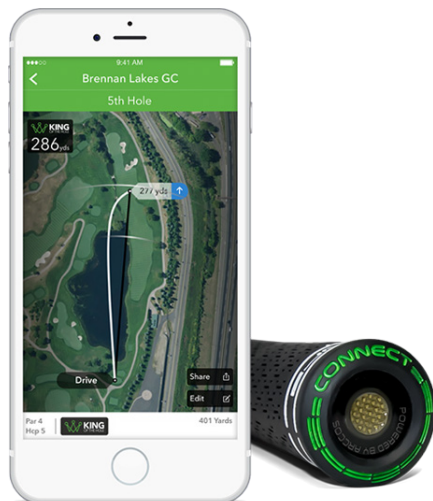
By raising the alignment line to the exact radius of the golf ball, or 21.35 mm, we created the most accurate alignment feature ever for a blade style putter. This alignment feature never moves relative to the golf ball because it is placed at the most optimal position for precision alignment, dead center of the golf ball. Regardless of whether you putt with your eyes behind, directly over, or well over the golf ball, the Cleveland Golf TFi 2135 putter offers you perfect alignment.

### TRUE FEEL INNOVATION

New TFi (True Feel Innovation) face combines a milled, copper-infused face cap over a copolymer insert for the ultimate in feel and consistency across the face.

FROM  
**\$129.99**





**COBRA CONNECT**

Powered by Arccos, golfers can automatically track the distance and accuracy of every drive. COBRA CONNECT users simply pair their club and phone with the free Arccos Driver smartphone app to receive their performance data, access rangefinder GPS distances for over 40,000 international courses.

**CLUBS WITH COBRA CONNECT**

KING F7+, KING F7 and KING LTD Black all come equipped with COBRA CONNECT™ club tracking technology.



**Cobra KING F7 Driver**

**FEATURING**

**COBRA CONNECT**

**3 CG POSITIONS**

Three distinct weight positions offering either a higher, lower or draw bias ball flight.

**TEXTREME CARBON FIBER CROWN**

The TeXtreme carbon fiber crown is 20% lighter than regular carbon fiber.

**COBRA CONNECT**

An integrated GPS device allowing you to Track Your Distance™, and analyze your driver stats from all your rounds.

**\$349.99**



**AVAILABLE NOVEMBER 18**

**Cobra KING LTD Matte Black**

**FEATURING**

**COBRA CONNECT**

KING LTD is back, sporting a brand new matte black finish and equipped with COBRA CONNECT, a seamlessly integrated grip sensor that automatically records your driver stats.

Available in: Black (shown), Silver, Blue

**\$449.99**



**Cobra  
KING F7 Variable Length**

**PRE-ORDER  
DECEMBER 2016**



**Cobra  
KING F7 One Length**

**ONE LENGTH MAKEUP**

Constant length irons have been re-engineered for 7-iron weighting and are designed with optimized geometries for consistent trajectory and distance gapping on the course.

**PRE-ORDER  
DECEMBER 2016**



**AVAILABLE  
NOVEMBER 25**

**Cobra  
KING Oversize Irons**

**\$999.99** STEEL

**\$1099.99** GRAPHITE



**PWR SHELL FACE**  
A thinner, stronger face and sole structure delivers our largest Sweet Zone™ ever.

**100% CNC MILLED FACE GROOVES**  
CNC milling improves groove structures to deliver maximum spin and trajectory.

**TECFLO CONSTRUCTION**  
Multiple construction designs allow each club in the set to perform differently.

**ZONE WEIGHTING**  
Weight is strategically positioned low and back in the head for greater forgiveness.



**HOLLOW BODY CONSTRUCTION**  
Full hollow design delivers preferred sound and feel and lowers CG for improved consistency and distance.



**LARGER SWEET ZONE**  
Larger club head profile at address provides increased ball speeds on off-center hits for more distance and forgiveness.

Up to **\$100 SAVINGS**

Limited Time Offer : 11/11/16-1/8/17

**\$50 INSTANT SAVINGS**



## GolfBuddy VOICE 2

With an enlarged 4-inch high resolution LCD and slim body design, the PT4 is the ultimate rangefinder that offers the finest golf GPS experience. The capacitive touch screen improves control with a new and more responsive interface.

Preloaded with an industry leading 38,000+ global courses and replaceable battery, the GolfBuddy PT4 continues to innovate in the handheld category.

~~MSRP \$149.99~~

**NOW \$99.99**



## GolfBuddy LD2

GolfBuddy is excited to launch the first-ever ladies golf GPS watch!

Ladies now have an elegant, lightweight and chic golf GPS option from GolfBuddy! The gorgeous light sapphire crystals from Swarovski® and the rich alligator grain leather watch band bring fashion and function to one device.

~~MSRP \$129.99~~

**NOW \$99.99**

After Rebate

**\$30 MAIL-IN REBATE**



## GolfBuddy CT2

The CT2 is the latest addition to the full line-up of distance measuring devices from GolfBuddy. The CT2 is a pocket-sized GPS with a versatile design and loaded with golf features. It has best-in-class battery life, with up to 17 hours of golf in GPS mode. It's compact with a tactile design and an ideal gadget for the golf course.

~~MSRP \$149.99~~

**NOW \$119.99**

After Rebate

**\$20**  
MAIL-IN  
REBATE



## GolfBuddy WT5

Our wearable GPS takes you one step further- introducing the new GolfBuddy WT5. With a slimmer design and a more comfortable fit to your wrist than its previous model, you can fully utilize Dynamic Green View and moveable pin placement features with simple press-and-hold buttons. The GolfBuddy WT5 is a fully functional digital wristwatch with a rechargeable battery.

~~MSRP \$149.99~~

**NOW \$129.99**

After Rebate

**\$100**  
MAIL-IN  
REBATE



## GolfBuddy LR5

GolfBuddy continues to expand its line by introducing a new laser rangefinder. The LR5 is a compact and easy-to-use device weighing just under 8 oz and featuring 3 targeting modes-standard, scan and pin. Unlike most of our competitors, the LR5's scan and pin mode is used with just one click.

~~MSRP \$249.99~~

**NOW \$149.99**

After Rebate

**\$70**  
MAIL-IN  
REBATE



## GolfBuddy LR5S

In addition to GolfBuddy LR5's state-of-the-art technological features and ergonomic design, the LR5S comes with a slope feature that provides compensated distances for various elevations for more accuracy. The GolfBuddy LR5S is the must-have item on the course that completes your needs with its design and performance.

~~MSRP \$299.99~~

**NOW \$199.99**

After Rebate



## GolfBuddy PT4

With an enlarged 4-inch high resolution LCD and slim body design, the PT4 is the ultimate rangefinder that offers the finest golf GPS experience. The capacitive touch screen improves control with a new and more responsive interface. Preloaded with an industry leading 38,000+ global courses and replaceable battery, the GolfBuddy PT4 continues to innovate in the handheld category.

~~MSRP \$399.99~~

**NOW \$329.99**

After Rebate



**TOP-LOK™  
TECHNOLOGY**



### Bag Boy 2017 Chiller Cart Bag

The Chiller cart bag is a cooler way to carry a six pack with a removable insulated cooler bag. Nine total pockets provide ample storage including two large apparel pockets, an oversized ball pocket, three quick-access mesh pockets and a fleece lined valuables pocket. 6 color options available.

TOP: 15-way; full-length individual dividers  
POCKETS: 9  
STRAPS: 1

**FEATURES:**

- Removable insulated cooler bag holds six 12-ounce cans
- Soft-grip oversized putter well for oversized grips
- Ergonomic soft-grip lift assist handles
- Three quick-access mesh pockets
- Umbrella holder and matching rainhood included
- Top-Lok™ Technology

**\$199.<sup>95</sup>**



**TOP-LOK™  
TECHNOLOGY**

### Bag Boy 2017 Chiller Hybrid Stand Bag

The Chiller hybrid stand bag is a cooler way to carry your drinks. Combining the functionality of a cart bag with the portability of a stand bag, the Chiller Hybrid Stand Bag features a removable insulated cooler. Equipped with eight specialized zippered pockets including two oversized apparel pockets and a fleece lined valuables pocket. 7 color options available.

TOP: 14-way; full-length individual dividers  
POCKETS: 8  
STRAPS: 1

**FEATURES:**

- Removable insulated cooler bag holds four 12-ounce cans
- Soft-grip oversized putter well for oversized grip
- Ergonomic single shoulder strap with strap holder
- Umbrella holder and matching rainhood included
- Top-Lok™ Technology

**\$199.<sup>95</sup>**



**TOP-LOK™  
TECHNOLOGY**



### Bag Boy 2017 Quad XL Push Cart

The Quad XL has a sleek aluminum frame, four wheels offer superior stability with 9.5 inch front and 11.5 inch rear wheels. Stand and cart bag friendly upper bag bracket featuring Top-Lok. Room for your gear in the full feature, extra deep scorecard console with golf ball storage, and extra-large accessory bag. The Quad XL is super compact for storage and transport.

WEIGHT: 16 lbs.  
FOLDED DIMENSIONS: 24" x 17" x 16"

**FEATURES:**

- Easy one-step handle adjustment accommodates golfers of all heights
- Extra-large accessory bag
- Handle mounted parking brake
- Mobile device holder, beverage holder and tee and ball marker integrated into the scorecard console
- Lightweight, solid maintenance free tires
- Top-Lok Technology

**\$199.<sup>95</sup>**

**TOP-LOK™  
TECHNOLOGY**

Bag Boy's new Top-Lok™ Technology is an innovative bag to cart attachment system designed to securely lock a Bag Boy bag onto a Bag Boy push cart. This patented design prevents the bag from twisting or turning, eliminating the need for cart straps.





## Datrek Go Lite Hybrid Stand Bag

The lightweight Go Lite Hybrid Stand Bag is Datrek's bestselling stand bag, and is built with multiple features and dividers to keep your clubs and gear organized without weighing you down. The Go Lite Hybrid is the second generation combining the functionality of a cart bag with the portability of a stand bag. Available in nine modern color combinations.

Top: 14-way with full length individual dividers  
Pockets: 5  
Strap: 2  
Weight: 5.2 lbs. - 2.3 kg.

### FEATURES:

- NEW soft-grip oversized putter and driver wells integrated into bag top
- Large ergonomic handle integrated into bag top
- Five total pockets for specialized storage including a large apparel pocket, oversized ball pocket and large fleece lined valuables pocket
- Insulated beverage sleeve and NEW cart strap sleeve
- Ergonomic padded double shoulder strap and hip pad for walking comfort
- Riding and push cart compatible base

**\$139.95**

## Bag Boy T-10 Travel Cover

The award winning T-10 is a hard top travel cover with an all-weather polyester fabric body which stores conveniently in the hard top for compact storage.

### FEATURES:

- Hard ABS top for maximum club protection
- Heavy duty anti-burst strap
- Two oversized shoe/garment pockets
- Durable skid resistant ABS base
- In-line skate wheels provide smooth rolling action
- Fabric: Premium all-weather 600D polyester body
- Packaging: 1 per outer carton

FITS: 48 inch driver; up to a 10 inch cart bag

**\$139.95**



## Datrek Go Lite Rider II Cart Bag

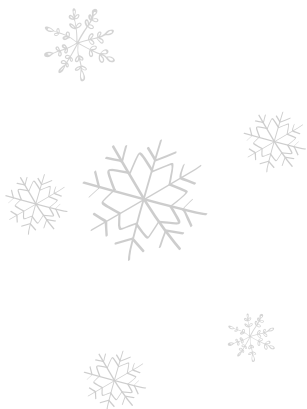
The Lite Rider II is the second generation of Datrek's top selling cart bag, with a sleek design and complete organization for your clubs and accessories. This "cart bag with everything" is the ideal choice for the player who most often uses a cart but still wants a lightweight bag, working equally well on a motorized cart or with a push cart. Comes in eight popular color combinations.

Top: 14-way with full length individual dividers  
Pockets: 7  
Strap: 1  
Weight : 5.5 lbs. - 2.5 kg

### FEATURES:

- Soft-grip oversized putter well
- Soft-grip lift assist handles integrated into bag top
- Seven pockets provide ample storage including two oversized apparel pockets, a large ball pocket and fleece lined valuables pocket
- Oversized insulated cooler pocket

**\$159.95**



## Mizuno JPX 900 Driver

Built on the success of JPX-850 by improving every aspect: ball speed, forgiveness, and adjustability range. The JPX 900 is the most adjustable driver in the market for optimization of launch parameters.

- New Fast Track Technology (Infinite center track)
- Stability Design (higher MOI)
- (VFA) Visual Face Angle Adjustment
- Quick Switch +/- 2 Degrees in Loft (7.5°-11.5°)
- New CORTECH Face Design for Faster Ball Speeds
- Re-engineered head dimensions
- HIT (Harmonic Impact Technology) For the Purest Feel & Sound

**\$499.99**

## Mizuno JPX 900 Fairway

Realizing that spin is critical to optimizing the performance of a fairway wood, Mizuno has integrated their Fast Track Technology to allow players to precisely tune the performance.

- New Fast Track Technology (infinite center track)
- Quick Switch Hosel +/- 2 degrees in loft
- ShockWave Sole - For High COR low on face for Ball Speed
- Re-engineered head dimensions
- Waffle Crown—Promotes forward COG
- Stability Design for our largest sweet area yet

**\$299.99**

## Mizuno JPX 900 Hybrid

Combining Mizuno's distance generating technologies: 1770 Maraging Face and Shockwave Sole, with a thoughtful head design to better bridge the gap between your highest lofted fairway wood and lowest lofted iron.

- Quick Switch Hosel +/- 2 degrees in loft
- Shockwave Sole - For Ball Speed
- Reverse Hosel Offset Design (FP)
- Re-engineered head shape dimensions
- Low and Shallow COG To Promote Higher launch with less spin
- Front weighted design for lower spin

**\$249.99**





## Mizuno JPX 900 Tour Iron

The JPX 900 Tour combines the best attributes of Mizuno's Grain Flow Forged Player's irons, with the advanced weighting strategies, and aggressive styling of our JPX series, providing a compact, workable iron with a surprising level of playability.

- Grain Flow Forged 1025E
- Tour Proven Sole Design
- Power Frame
- Compact Head Size
- Mizuno Tour Level Feel

**\$1199.99**

(3-PW) STEEL OR GRAPHITE



## Mizuno JPX 900 Forged Iron

Built on the foundation of the highly regarded JPX 850 Forged which was Mizuno's first integration of Boron, the JPX 900 Forged makes 'across the board' enhancements that improve the look, feel and distance, with new levels of ball speeds from a forged iron.

- Grain Flow Forged 1025 Boron
- Harmonic Impact Technology for soft, solid, consistent feel
- Reengineered CNC Milled Pocket — For our thinnest forged face
- New CORTECH Design
- Power Frame

**\$1199.99**

(4-GW) STEEL OR GRAPHITE



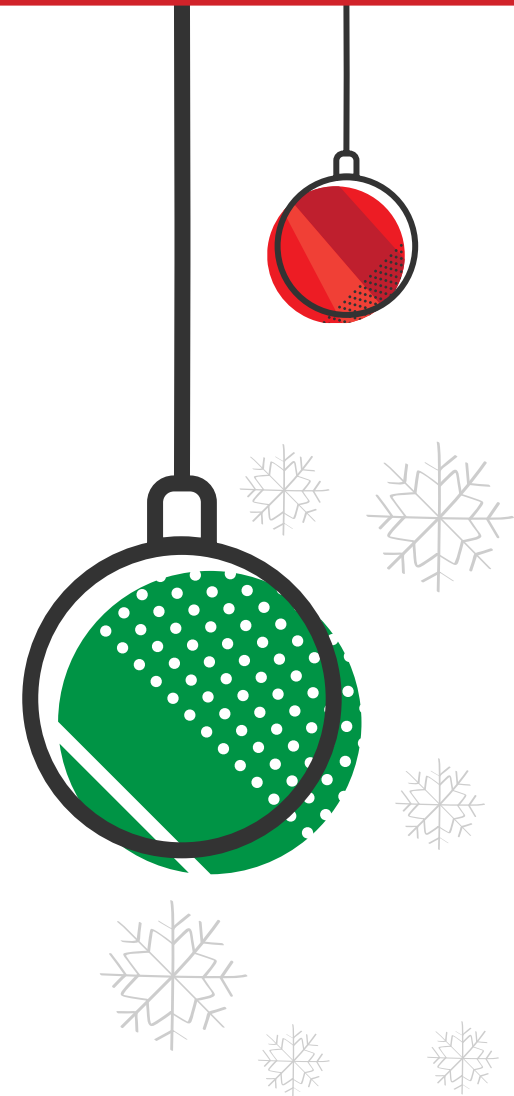
## Mizuno JPX 900 Hot Metal Iron

With the JPX 900 Hot Metal Iron, Mizuno set out to Engineer the Longest, Hottest, broad appeal iron we've ever made. By utilizing new materials and new methods of construction, they were able to achieve this, and produced an unmatched level of ball speed.

- Chromoly 4140M
- 360 degree One Piece Cup Face
- Re-engineered CORTECH face
- Power Frame
- Triple Cut Sole

**\$899.99**

(4-GW) STEEL. (5-SW) GRAPHITE  
MENS & LADIES





### Sassy Caddy Jazzy Cart Bag

Hum a tune while carrying this Jazzy Bag! Deluxe Women's Cart Bags have 14 full length dividers & an integrated putter well. Shoulder strap is located at back of bag, allowing us to design more pockets and features in front side of golf bag. Coordinating detachable purse and rain hood included.

Additional features include: Integrated tee holders, glove patch, velvet-lined valuable pockets and velvet-lined easy access pouch for range finder. Several large pockets for functional storage. Two-zip off pockets for embroidery options: front lower pocket, large side pocket.

**\$255**



### Sassy Caddy Sparkly Cart Bag

Add some sparkle to your game with these fun poppy orange, denim blue prints.

Deluxe Women's Cart Bags have 14 full length dividers & an integrated putter well. Shoulder strap is located at back of bag, allowing us to design more pockets and features in front side of golf bag. Coordinating detachable purse and rain hood included.

Additional features include: Integrated tee holders, glove patch, velvet-lined valuable pockets and velvet-lined easy access pouch for range finder. Several large pockets for functional storage. Two-zip off pockets for embroidery options: front lower pocket, large side pocket.

**\$255**



### Sassy Caddy Posy Stand Bag

Playful plaid mixed with contemporary floral print accented by vibrant teal.

Stand Bags are very light-weight, weighing only 5 pounds. Includes 6 full length dividers (each divider can hold 2-3 clubs), hidden velvet-lined valuables pouch, cooler pocket, glove patch, integrated tee holders & mesh ball pockets. Coordinating detachable purse & rain hood included. Dual padded strap system makes this bag a breeze to carry!

Zip side pocket removable for mono-gramming options.

**\$232**



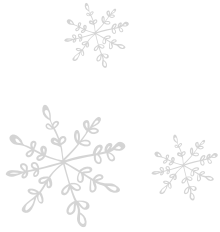
### Sassy Caddy Posy Tote Bag

Our versatile and fashionable tote has everything you need. We used attractive, stylish and durable fabrics that are water proof, stain and fade resistant. Reinforced, rip-resistant leather handles fit comfortably over your shoulder or in hand. Two large internal side pockets for organization, one with a velcro closure. Optional snap closure for traveling. Leather bottom for extra durability and protection from stains.

Dimensions: 23 x 10 x 17

**\$89**





**\$30**  
**MAIL-IN**  
**REBATE**  
 (limit 2 per household)  
 ★



## Precision Pro Golf Nexus Rangefinder

- 400 yard range
- 1/10 yard measurement
- Accurate to +/- 1 yard
- 6x magnification
- Dynamic Scan Target-Lock (DST)
- Soft-coat feel and ergonomic design
- 1-year warranty

~~WAS \$199.99~~

**NOW \$169.99**  
 After Rebate

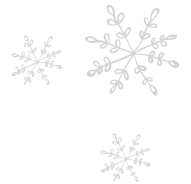


## Precision Pro Golf GPS Golf Band

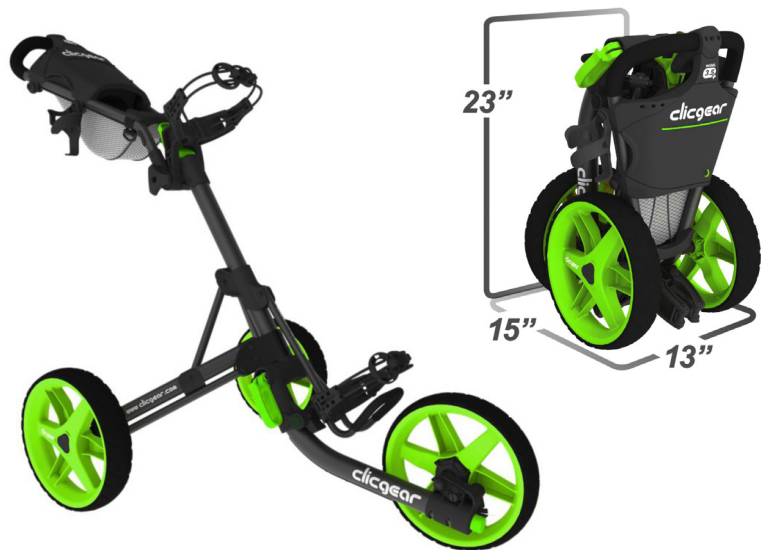
- 35k preloaded courses
- Weight: 1.2 oz.
- Front, middle, back distances
- Up to 4 hazards
- Auto course recognition
- iGolf Mapping
- 1-year warranty

~~WAS \$179.99~~

**NOW \$149.99**  
 After Rebate



# GIFT IDEAS FROM PROACTIVE SPORTS



## Clicgear Push Cart 3.5+

The Clicgear Model 3.5+ Push Cart is a compact, reliable, and easy-to-use push cart that makes walking the course a breeze. The Clicgear Model 3.0 was a hugely popular push car model when it was released due to its easy-to-use folding frame, multiple convenience features, and wide selection of available colors. Now, Clicgear has released the Model 3.5+ with loads of updates made based on customer feedback.

### MODEL 3.5+ IMPROVEMENTS INCLUDE:

- Updated brake system will engage even easier
- Larger storage net is 80% larger
- Updated bag straps have a feature that makes them easier to grab when securing the bungee straps
- Larger cup holder will accommodate oversized bottles
- Improved umbrella storage bracket allows users to store the Umbrella Angle Adjuster

**\$219.99**



## Kid's Klubs Toy Golf Clubs

The Kid's Klubs Toy Golf Clubs are good for kids ages 2-3 years old. Plastic rolling bag with a driver, iron, 3 golf balls, and 2 cups with flags.

**\$14.99**



## Go Green Pocket Ball Washer

Never forget your towel at the green or putt with a dirty ball again. Wet the microfiber liner of the Green-Go and slip it in your pocket. Stays wet the entire round, no matter the temperature. Waterproof, your pocket stays dry.

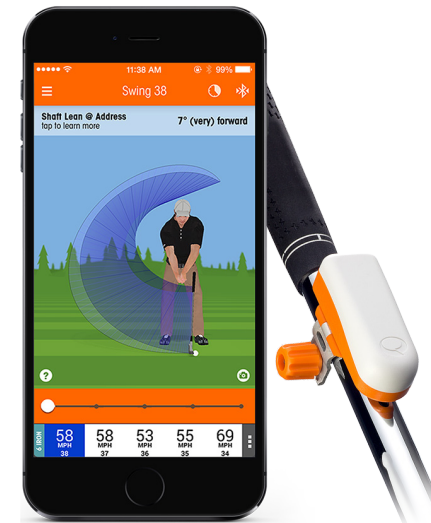
**\$5.99**



# SKY GOLF HOLIDAY PRICING



November 15 - December 31<sup>st</sup>



## SkyCaddie Aire II

- NO ANNUAL FEES REQUIRED
- Small, compact, lightweight so you can wear it on your belt or hang it off your bag
- 35,000 Preloaded Golf Courses, World Wide, Ready to Play
- Accurate distances to Front, Center and Back of Green from your angle of approach. Need to carry the bunker in front of the green, one number to the pin doesn't help you hit more greens.
- Fairway target off the tee and layup target into the green. Mapping from the ground allows us to give you a safe landing zone.
- Digital Scorecard (stores 20 rounds) and Measure Shot Distance button

~~WAS \$149.95~~  
**NOW \$99.95**

## SkyCaddie Watch SW2

- NO ANNUAL FEES REQUIRED
- 35,000 Preloaded Golf Courses, World Wide, Ready to Play
- Accurate distances to Front, Center and Back of each Green.
- One number is not enough. To hit more greens you need the front and back distances. This creates a larger landing area, easier to pick the best club and hit more greens!
- Bluetooth Smartphone Notifications; calls, email, texts and more
- Digital Scorecard (stores 20 rounds) and Measure Shot Distance button
- Multi-Sport Odometer: Pace of Play, for your run/walk track distance, time speed, pace, location, laps and calories burned.

~~WAS \$179.95~~  
**NOW \$129.95**

## SkyCaddie SkyPro

- SkyPro a great way to improve your golf swing or putting stroke.
- View your swing or putt from any angle, compare it to a favorite, or zoom in for more detail
- Use the checkpoint system to find out what you need to work on or meaningful practice.
- View your swing or putt from down the line, face on, above, or anywhere in between.
- Great tool to practice with in between your lessons.
- NEW Attack Angle to go with your: swing path, club head speed, swing plane, club face rotation, shaft angles, and more

~~WAS \$169.95~~  
**NOW \$149.95**



## Sun Mountain 2017 Speed Cart GT

Speed Cart® is one of the most revolutionary products in golf. Prior to Speed Cart's introduction in 1999, three-wheeled, ergonomically efficient folding push carts did not exist in the marketplace. **New for 2017**, Sun Mountain brings you the Speed Cart GT and its numerous improvements.

### FEATURES:

- Improved upper bag bracket that fits stand bag leg mechanisms
- New console tray with a cell phone holder, padded valuables tray and score card holder
- New adjustable drink holder
- Both the upper and lower bag brackets have bungee cords to secure your golf bag on the cart
- Built-in accessory knob and an all new accessory line
- Updated mesh basket
- Folded: W 37" X H 16" X D 13"
- Weight: 17.25 LBS
- 9 colors available

**\$209.99**



## Sun Mountain 2017 4.5 LS Stand Bag

**New for 2017**, the 4.5 LS is a lightweight, mid-sized stand bag. Weighing just 4.5 pounds and incorporating the E-Z Fit Dual Strap System, the 4.5 LS is built for carrying and has numerous cart-friendly features. A cart-strap pass-through runs behind the clothing pocket so the bag can be secured to a cart without hindering pocket access. A leg lock system and cart-friendly bottom make the 4.5 LS the complete package in a golf bag. Top: 9.0", 4-Way. Pockets: 8

### FEATURES:

- Eight pockets, including a full-length clothing pocket, hydration pouch and multiple accessory pockets, one of which is water-resistant
- The carry straps are constructed with three-layer construction and are contoured for maximum carry comfort
- The E-Z Fit Dual Strap System is comfortable and easy to adjust
- A lift-assist panel is built in to the lower pocket for ease of handling
- Includes matching rainhood
- Strap: E-Z Fit® Dual Strap System
- 11 colors available

**\$209.99**





## Sun Mountain 2FIVE

Building the lightest, full-featured golf bag on the market requires precision. To accomplish this goal, Sun Mountain uses carbon fiber legs, lightweight nylon fabric, high density foam, high-strength-to-weight plastics and their proprietary X-Strap® Dual Strap System. The finished product weighs in at a scant 2.5 pounds and is Golf Digest Editor's Choice golf bag in the Lightweight Bag Division. Top: 9.0", 4-WAY. Pockets: 4

### FEATURES:

- Constructed with 70 denier fabrics used in many outdoor equipment applications including mountaineering tents used on Everest
- X-Strap System is easy to get on and off and works well as a single strap for short carries. The new plastic strap guide provides effortless interaction between the straps
- Matching rainhood
- 10 colors available

**\$219.99**



## Sun Mountain 2017 3.5 LS Stand Bag

**New for 2017**, the 3.5 LS weighs 3.5 pounds and is designed for the golfer who loves Sun Mountain's hugely popular 2Five but wants a few more features. Like the 2Five, the 3.5 LS is constructed with lightweight nylon fabric, high-strength-to-weight plastic and carbon fiber legs. Adding a pound allowed the use of a thicker strap, a more cushioned hip pad and the addition of three more pockets. Top: 9.0", 4-WAY. Pockets: 7

### FEATURES:

- Ultra-lightweight, highly durable carbon fiber legs
- Seven pockets, including a water-resistant, velour-lined valuables pocket, full-length apparel pocket and a hydration pouch
- X-Strap System is easy to get on and off and works well as a single strap for short carries. The new plastic strap guide provides effortless interaction between the two straps
- Matching rainhood
- 7 colors available

**\$229.99**



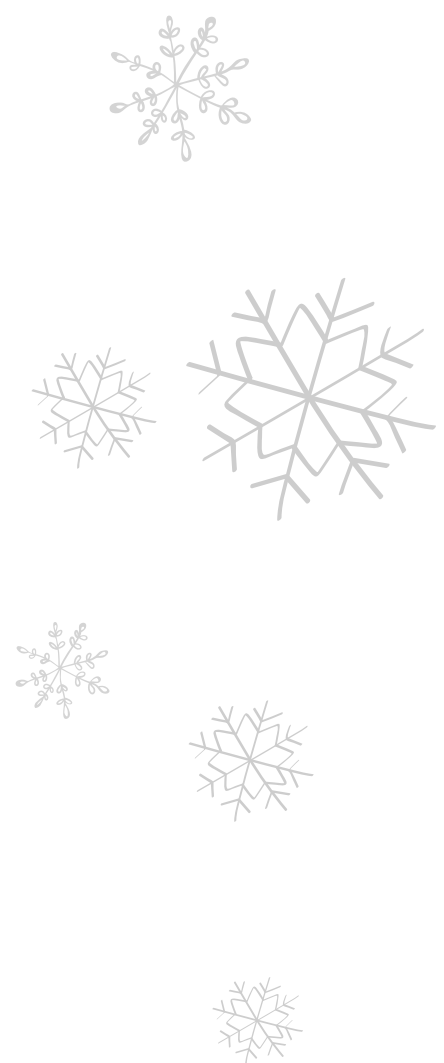
## Sun Mountain 2017 C-130 Cart Bag

Recently selected as Golf Digest Editors' Choice in the Cart Bag Division, the C-130 has long been Sun Mountain's best-selling cart bag. **For 2017**, Sun Mountain has updated the C-130 with several new features. There are now three velour-lined valuables pockets, one of which is water-resistant. Also new is the Smart Strap System which attaches the bag to a riding cart with two Velcro® straps which prevent the riding cart's straps from interfering with pocket usage and stop the bag from twisting on the cart. Top: 10.5", 14-Way. Pockets: 10

### FEATURES:

- Fourteen individual club dividers run the full-length of the bag to protect and organize clubs
- Reverse-orientation top makes accessing clubs easy
- All pockets are forward-facing and accessible when the bag is on a cart
- Includes a matching rainhood
- 11 colors available

**\$229.99**





## TaylorMade TP Putter

- Clean, Precise, Sophisticated - Designed To Perform
- Milled 303 Stainless Steel heads and Tour Satin Finish for premium look and feel
- Adjustable sole weights, to ensure playable swing-weight
- Strategically positioned sightlines to aid in alignment
- Two stock grips and various TOUR-validated grip options available
- Wide array of toe hangs to fit any stroke

**\$199.99 - \$219.99**



## TaylorMade M1 Driver

The Taylormade M1 Driver was created to offer the golfer a personalized performance that fits their unique swing type. With a dual T-Track weighted design System located on the sole for optimal launch and spin as well as a trajectory control, and a loft adjustment of +/- 4 degrees the golfer is sure to get dialed in.

~~WAS \$499.99~~  
**NOW \$399.99**



## TaylorMade M2 Driver

The Taylormade M2 Driver was designed to improve the abilities of golfers at all levels. Equipped with a massive sweet spot, the M2 Driver is one of the most forgiving drivers on the market. The massive sweet spot combined with the redesigned speed pocket optimizes forgiveness and speed across the face resulting in more distance and accuracy.

**\$399.99**





## TaylorMade Flextech Lite Carry Bag

TaylorMade's new FlexTech bag line features a patented smooth release system and collapsible base system to improve ease of use and prevent club crowding. The FlexTech Light Carry Bag also includes our Dual-Density Comfort Strap for a more convenient and stable carry.

- Zip off ball pocket for custom embroidery. Add your name and number to any FlexTech Stand Bag, Supreme Cart Bag or TM Cart Lite Bag for free. See packaging for details.
- 4-way organizational top
- Water-resistant valuables pocket with micro-suede lining
- Easily accessible insulated water bottle pocket
- Full-length dividers to eliminate club crowding

**\$189.99**



## TaylorMade Project (a) Golf Ball

TaylorMade has designed an incredible golf ball for competitive mid-handicappers who need more approach-shot spin. Project (a) is long off every club and feels great around the greens.

- REACT™ 40 compression core — Faster Driver Speeds
- SPIN MANTLE™ technology — More Iron Distance
- URETHANE SOFT TECH™ COVER — Soft Feel and Tour Spin

Now Available in Yellow

**\$34.99**





### Tour Edge Exotics EX9 Driver

The Exotics EX9 driver's Full-Speed Impact design maximizes club head speed through a sloped crown and a subtle sole design optimizing weight distribution. The EX9 is available in two lofts and features adjustability options including loft, lie angle, and an interchangeable sole weight. The driver encompasses ideal sound, exceptional control, and explosive distance cultivating the best Exotics driver ever.

~~\$299.99~~

*Price too low to advertise! See your local NGBA Retailer for price.*



### Tour Edge Exotics EX9 Fairway Wood

The EX9's new Full-Speed Impact design maximizes club head speed all the way through impact with a sloped crown and the Exotics famous SlipStream sole. Tour Edge engineers began the designing process with the main goal of maximizing clubhead speed at impact and creating new combinations of technology to achieve it; creating the Full-Speed Impact design. The first property of the new design in the EX9 fairway wood clubhead is a sloping crown. The gentle slope reduces aerodynamic drag resulting in added speed at impact for maximum distance.

~~\$229.99~~

*Price too low to advertise! See your local NGBA Retailer for price.*



### Tour Edge Exotics EX9 Hybrid

The EX9 hybrid features the superior forgiveness of previous models combined with Exotics industry-leading technology — SlipStream sole, cup face, combo brazing - in a classic hybrid style.

The EX9 hybrid's technology story begins with a maraging steel cup face with updated/improved Variable Face Thickness (VFT). The thin and thick compartments on the face are strategically positioned for optimal forgiveness in preparation for off-center hits. The VFT face is combo brazed with a heavier hyper-steel body to make the EX9 hybrid easy to hit from any lie.

~~\$159.99~~

\$20 Mail-in Rebate on Drivers and Fairway woods. Expires 12/31/16. See stores for details



## Tour Edge Exotics X Rail Hybrids

Easy-to-hit, the Xrail's sole features two outer rails and one wider inner rail that help players hit perfect shots from any lie. The new Xrail places 15% more weight in the larger outer rails to producing a higher moment of inertia for enhanced stability on off-center hits. The new wider, diamond-shaped inner rail guides the clubface into a square position at impact. The V-sole design also minimizes divots from heavy lies so shots get up and away quickly and easily.

Exotics products have a rich heritage of craftsmanship. The Xrail is no different. Incorporating multi-metal construction, the Xrail combines a hyper-steel body with a thinner Carpenter steel face. The thinner face along with variable face thickness allows for exceptional feel, proven forgiveness and added power, even on off-center hits.

**\$129.99**



## Tour Edge Exotics Hot Launch Fairway

Tour Edge Hot Launch fairway woods are constructed from 450 SS hyper steel and utilize variable face thickness (VFT) technology to enhance rebound effect for powerful distance.

Weight located in the sole of the club helps create a deep center of gravity for an easy launch and added forgiveness on off-center hits. The sole plate features four meticulously designed heel and toe canals designed to reduce turf drag for peak swing speeds at impact.

The Hot Launch's shallow face design and low center of gravity are the ideal combination to produce higher launch angles with less spin. Grafalloy Pro Launch Blue shafts perfectly compliment the Hot Launch design to deliver superior results.

**\$119.99**



## Tour Edge Exotics Hot Launch Adjustable Driver

Tour Edge Hot Launch titanium driver is adjustable with loft options from 8.5 to 12.5 degrees in 1 degree increments. Easy-to-use adjustability gives players great control in choosing the most efficient loft for optimal distance and accuracy at an extremely comfortable price point.

The Hot Launch features a 460cc titanium four-piece forged club head. The driver's deep face design and variable face thickness technology provide maximum power from more contact points on the face.

A weight positioned in the rear center of the sole of creates a deep center of gravity for an easy launch and greater forgiveness on off-center hits. The internal sole design incorporates additional weight in the heel and toe to maximize stability and performance.

**\$199.99**

**HEAT UP THE  
*Season*  
WITH SAVINGS ON  
HOT LAUNCH**





## Wilson Staff C200 Irons

The Wilson Staff C200 irons push innovation to unforeseen limits. Designed for the Crossover player seeking a midsize head shape and moderate offset, the C200 yields distances not available from traditional irons, while still offering best-in-class feel. At the core of its design is the proprietary FLX Face Technology, which minimizes the contact points between the body and the thin face.

**\$799.99** **\$899.99**  
STEEL GRAPHITE



## Wilson Staff DUO Golf Balls

With its groundbreaking 29 compression, the Wilson Staff DUO is the World's Softest golf ball. Designed for the Distance player seeking less spin off the tee and a soft feel around the greens, the DUO is the industry leader in low compression technology. Take the challenge and prove it to yourself why DUO is longer and softer than any ball you've ever played.

**\$19.99**



## Wilson Staff DUO SPIN Golf Balls

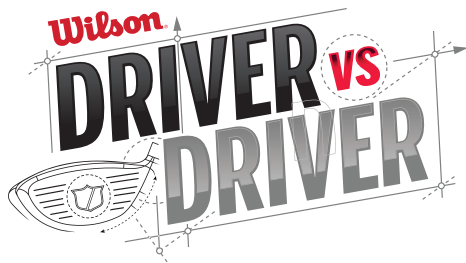
The 35 compression DUO Spin golf ball from Wilson Staff is the World's Softest Multilayer ball. Featuring similar distance and soft feel characteristics inherent in the DUO, the DUO Spin presents the added benefit of more greenside spin for the Control player demanding action in the scoring zone. Take the challenge and prove it to yourself why the DUO and DUO Spin are longer and softer than any balls within their construction categories.

*While supplies last and can't be combined with any other offer. Thru 12/31/16*

**2 dozen for \$40**  
SINGLE DOZEN \$26.99

## FREE PERSONALIZATION

Available for DUO®, DUO® Spin, and DUO® Urethane balls only. For guaranteed delivery by the holidays, orders must be placed by 12/16/16 for delivery by 12/25/16. Minimum quantity 1 dozen. Promotion runs 11/1/16 - 12/31/16. While supplies last. See your local NGBA Retailer for details.



# 1 THE ONE THAT MADE THE CUT

Introducing Wilson Staff Triton, the world's most adjustable multi-piece driver featuring dual sole plates for optimal launch, spin and extraordinary distance.



## Wilson Staff Triton

The Triton is designed to make hitting the sweet spot intuitive and consistent. Two interchangeable sole plates and adjustable weights allow customization to get the best results for each player. The 1:1 alignment aid helps players set up correctly every time and create a solid repeatable swing. Finally, the high MOI and low drag translates into both power and consistency.

### FEATURES

#### 1:1 VISIBLE SWING ACTIVE TECHNOLOGY

The revolutionary crown feature makes set-up consistent, easy and intuitive. The 1:1 alignment aid, visible both pre-shot and at impact, improves ball striking for improved accuracy, distance and consistency.

#### CHANGEABLE SOLE WEIGHTS

Innovative, interchangeable sole plates, one titanium and one carbon fiber, are included for significant launch and spin changes. The 22 gram titanium sole plate is optimized for the majority of players who need mid to high launch and low spin while the 9 gram carbon fiber sole plate is geared for players who need lower launch and lower spin, for the world's most adjustable multi-piece driver.

#### 5 MOVABLE WEIGHTS

Five moveable weights - two 2 gram, two 6 gram and one 12 gram - can be placed in 18 unique combinations to fine tune and perfect ball flight. By varying the weight placement in the three sole ports, shot trajectory can be adjusted higher or lower or to help with draws and fades for true customization to complement each player's swing.

### ADJUSTABLE HOSEL

Green Means Go! One of the smallest, lightest and easiest to use adjustable hosel systems available, Fast Fit technology makes getting the perfect set-up fast and easy. Just a few turns of the wrench, the head does not need to be detached from the shaft, allows access to all six hosel settings. Those settings include three for loft - 10 strong, standard, 10 weak - and those same three in a Draw configuration for enhanced right-to-left shot shaping.

### 10 OPTIONAL SHAFTS (No Upcharge)

Headlined by the Aldila Rogue Tour Silver 125 MSI, ten different tour proven shafts are available at no upcharge. From Aldila Rogue to Project X HZRDUS Black and Red to several options from Matrix, the optimal bend profile, feel, launch and spin can be fit to every golfer for maximum distance and fairway finding control.

**\$449.<sup>99</sup>** AVAILABLE 11/25



The Winning Team:  
**TEAM SILLIES**

# Special Holiday Offer

## \$39.99

PLUS FREE PERSONALIZATION



### Titleist ProV1 Golf Balls

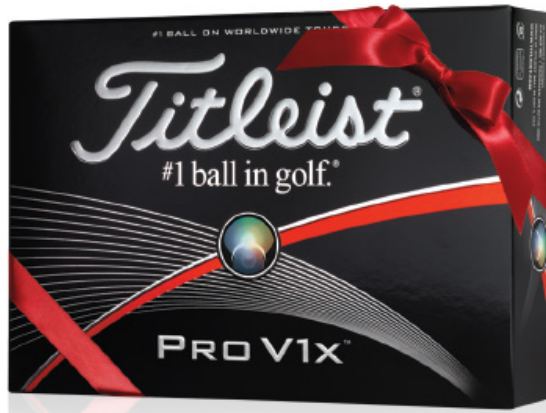
The Titleist Pro V1 golf ball provides total performance for all golfers with the combination of exceptional distance, the best short game spin and control, and very soft feel.

#### Player Benefits

- Exceptional Distance
- Drop-and-Stop Short Game Control
- Very Soft Feel
- Long-Lasting Durability

**\$39.99**

**Special Holiday Offer November 20 thru December 31, 2016**



### Titleist ProV1x Golf Balls

The Titleist Pro V1x golf ball provides total performance for all golfers with extraordinary distance, the best short game spin and control, and soft feel.

#### Player Benefits

- Extraordinary Distance
- Drop-and-Stop Short Game Control
- Soft Feel
- Long-Lasting Durability

**\$39.99**

**Special Holiday Offer November 20 thru December 31, 2016**



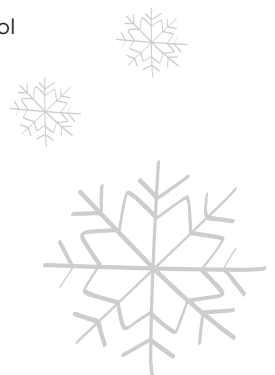
### Volvik VIVID Golf Balls

The Titleist Pro V1x golf ball provides total performance for all golfers with extraordinary distance, the best short game spin and control, and soft feel.

#### Player Benefits

- Extraordinary Distance
- Drop-and-Stop Short Game Control
- Soft Feel
- Long-Lasting Durability

**\$29.99**







## Zero Friction Compression Glove

For the first time, never before seen in the golf industry — a breakthrough in golf gloves through compression-fit technology. Like many golfers, you may struggle with finding that perfect size golf glove. Since there are 7 different sizes, that leaves a lot of room for error when selecting one — and the worst part is, sometimes gloves that are even the same size may fit differently due to types of leather and the way traditional gloves are manufactured.

Zero Friction's weather resistant performance glove takes the guesswork out of finding the perfect size. Unlike any other golf glove, Zero Friction uses its patented compression-fit technology to deliver outstanding precision, flexibility and comfort to every golfer that puts one on.

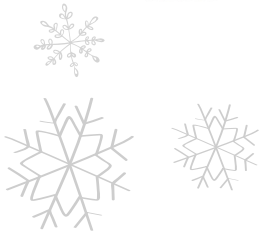
**\$13.99**



## Zero Friction Zero Friction Storm™ Men's All Weather Compression Fit Glove

Universal Fit - One Size Fits All Count on Zero Friction Performance Golf to design Superior All Weather (Rain & Cold) Golf Gloves using Compression-Fit Technology. These gloves have all the great features of our original ZF Compression Fit technology golf glove with added warmth and durability for the colder months. They are knitted from a unique hollow core polyester yarn plus spandex that makes them warm, light weight, breathable and guaranteed to fit. The outer premium microfiber suede of the glove provides a non-slip grip for wet and humid conditions. Sold in pairs.

**\$29.99**



## Zero Friction Motion Fit Glove

The Johnny Miller Motion-Fit glove offers the same universal fit technology along with a compression fit that molds to your hand for a guaranteed fit. The glove is made from a combination of Cabretta leather and spandex which stretches and compresses to each hand for a taught fit, eliminating the friction caused from a loose or stretched glove, allowing for a greater feel, more comfort and better shot accuracy.

**\$21.99**



## Zero Friction Distance Pro GPS Men's Synthetic Golf Glove

The Zero Friction™ DistancePro™ GPS Glove is the ultimate in accuracy and convenience — powered by Bluetooth®, the device sits comfortably on the glove flap and weighs less than half an ounce. As you approach your shot, the read-out gives front, center and back distance to the green — with over 35,000 golf courses programmed worldwide, you will never be left without accurate distance.

**\$129.99**

