



Little Ship Club
 (Queensland Squadron)
 ABN 31 009 823 590
 1 Yabby Street
 Dunwich Qld 4183
 Phone 07 3409 9022
 Post: PO Box 10, Dunwich Qld 4183
 Website: www.littleshipclub.com.au
 Newsletter: enews@littleshipclub.com.au

Little Ship Club

March 2016 eNews

LSC eNews
 PHOTO OF THE MONTH

Fishy!

When you strike a lucky combination of adorable pet and monthly theme then the winner is clear.

Well done, Tricia and Mike Brewer, for this gorgeous pic of Jake eyeing-off the Grass Emperor on the end of the line – did you use a fish-eye lens?

1,000 points are arriving in your Member account for your next visit to the Club!

Next month's cover theme is "Easter at the One Mile" and the deadline for entries is Wednesday 30th March.



GET HOOKED IN THIS BUMPER 24 PAGE EDITION:
 Fishing comp. & Game Fish event reports
 Plan your 2016 cruising program
 Meet our new Club managers



Commodore	Roger McDowall	"2c"	0422 880 294
Immediate-Past Commodore	Lyle Watkins	"Silhouette"	
Vice-Commodore Director, Legal Affairs	Chris Goodhew	"Warrior"	0407 981 814
Rear-Commodore Director, Communications	Matthew Tesch	"Mistress"	0406 777 077
Director / Secretary	Gaye Morcombe	"2c"	0413 843 081
Director / Hon. Treasurer	Tracey Watts	"Speculari"	0417 892 887
Director, Grounds & Works	Bill Canfield	"She"	0412 565 872
Director, Legal Support	Greg McGuire	"Speculari"	0411 750 033
Fishing Captain	Col Barker	"Elizabeth"	0400 305 377
Game Fish Captain	Ian Bladin	"Swordfish"	0428 458 039
Sailing Captain	Paul Coleman	"Restless"	0422 652 440
LSC Photographer	HLM Pam Mobsby	"Alina"	
Naval Liaison/Protocol Officer	Allan Early		
QRBC Delegate	PC LM Arthur Mobsby	"Alina"	
Club Managers	Julie & Craig Hackett	manager@littleshipclub.com.au	07 3409 9022
Web / Online / eNews Editor	Matthew Tesch	enews@littleshipclub.com.au	0406 777 077

★ LSCalendar 2016

Raffles and Members' draws every Friday night

MAR	Fishing Competition	LSC	Fri 11th > Sun 13th
	Music by the Bay	LSC	Easter Sat 26th
	eNews deadline	LSC	Wed 30th
APR	Fishing Competition	LSC	Fri 8th > Sun 10th
	Commodore's at Home	LSC	Sat 16th
	Anzac Day	LSC	Mon 25th
MAY	Labour Day long weekend	LSC	Mon 2nd
	Fishing Competition	LSC	Fri 6th > Sun 8th
	Champagne Cruise	Bay	Sat 21st > Sat 28th
	Mother's Day	LSC	Sun 8th
	State of Origin (big screen)	LSC	Wed 25th
JUN	Jazz by the Bay	LSC	Sun 12th
	State of Origin (big screen)	LSC	Wed 15th
	Fishing Competition	LSC	Fri 17th > Sun 19th
JUL	State of Origin (big screen)	LSC	Wed 6th
	Fishing Competition	LSC	Fri 15th > Sun 17th
	Music by the Bay	LSC	Sat 16th
AUG	Fishing Competition	LSC	Fri 19th > Sun 21st
	Music by the Bay	LSC	Sat 20th
SEP	Fishing Competition	LSC	Fri 2nd > Sun 4th
	Father's Day	LSC	Sun 4th
	Interclub Bay Cruise	Bay	Sat 17th > Sat 24th

**For unique
WEDDINGS,
memorable
ANNIVERSARIES
and other special
OCCASIONS,
think "Little Ships"**

Little Ship Club
Phone 3409 9022
or lodge an online enquiry
via our new website:
littleshipclub.com.au



Commodore

Well, what a month February was! Two major events at the Club and both proving exceptional successes. A credit to the Fishing and Game Fish sections.

Fishing Section had to deal with a 'blow out' on their opening weekend only to be saturated by inclement weather on their second attempt. Nevertheless the "never say die" anglers and crabbers braved the elements and an excellent weekend was had by all. Congratulations.

The Game Fish tournament this year really became a 'celebrity event' with the inclusion of Andrew 'Freddie' Flintoff – one-time England Test cricketer and commentator, in his later career a roving television presenter cooking up a storm on international cable TV.

Once again the LSC has hosted an event that, through global media, will likely receive some significant exposure. By the time Members read this eNews, Freddie's production team will have returned to the UK after their six-week filming tour.

I particularly want to record my appreciation of the efforts of our Game Fish leaders Ian Bladin and Steve Carroll, who willingly modified their own tournament plans to accommodate our visitors, and laid on vessels to get Freddie & co. out on the water among the action to help showcase our Club in a very tight timeslot.

The tournament was well supported; even with poor conditions on the Friday the competition was fierce but the 'weather gods' turned it on Saturday with the fish responding to the pleasant weather (and maybe Freddie's presence?). Good catches were experienced by a number of teams – see pp.10-12 for photos and results. The competitor presentations stretched from the Saturday night dinner to the Sunday morning breakfast when all the major trophies and prizes were presented by GF Captain Ian Bladin.

Again, the Section is to be congratulated for both its traditionally professional organisation and the overall success of the event. Well done.

I am pleased to advise we are receiving a steadily increasing number of enquiries about weddings, receptions and functions, with particular interest from coach companies once again. Our updated website has certainly had a positive online impact and we are also experiencing more nautical interest in the Club with additional requests for pontoon use. Good signs in anyone's language.



These and other developments, as much as the demonstrated track record of commitment to our Club, underscored the Board's decision at the February meeting, to elect our eNews/online editor and Director (Communications) Matt Tesch to the role of Rear-Commodore now vacated by David Cameron.

I thank David for his steadying hand on the 'chain of command' and wish he and Margaret even more enjoyment of this year's "Champagne Cruise" (see p.16).

The Club is currently in 'caretaker mode' (yours truly and Gaye!) while we await our new managers Julie and Craig Hackett commencing duty on Monday 7th March – you can meet them on p.15. The lawns are starting to green up thanks to the local water supply and fertiliser distributed by Hugh Bletchley at the recent Working Bee (see p.7).

The "Commodore's at Home" is not that far away (Saturday 16th April) so check your calendars and ready your flags for the sail-past. We had good attendance last year and it would be nice to see an increase in fleet size in this 65th year of our Club – a very important milestone indeed.

Roger J McDowall
Mobile: 0422 880 294

DATE-CLAIMERS FOR YOUR CALENDARS!

First "MUSIC BY THE BAY" for 2016 – Easter Saturday 26th March

The annual "COMMODORE'S AT HOME" – Saturday 16th April

The entertainment program is being finalised by Julie, Craig and Matt for "Music by the Bay" and news will soon be available on the Club website, with email updates to all Members.



★ Membership

It's been a very fruitful Summer indeed, with 29 new Full Members, 2 Socials upgrading to Full, 8 past Members rejoining, 9 new Associates and 2 Associates rejoining! As I have been based at the Club, assisting with the transition process, Tracey has taken over membership, an arrangement which has worked well in the past.

Gaye Morcombe
Director / Hon. Secretary
Mobile: 0413 043 081



Members' FRIDAY NIGHT random draw now*

\$3,000

on Friday 4th March



*After draw on 26th February
Amount jackpots by \$50 each week if unclaimed on the night.

Results reported in monthly LSC eNews are based on draw status on deadline, usually after the 3rd Friday of the month, and may change before or following eNews publication.

New Members

FULL MEMBER	VESSEL	ASSOCIATE
Christopher Aldridge	"Escape"	
Leslie Rankin	"Marianna"	
Margaret Cameron	"Midland Star"	
Kellum Tate	"Ywish"	
Nick Day	"In The Black"	
Peter Andersen	"Salamander"	
Sam Allen	"Hard Slog"	
Andrew Gutteridge	"Willamena 2"	
Murray Paton	"Yorkshire Lass"	
Brett Sowyer	"Troutie"	Annette Watson
Benjamin Haddon	"Mawarra"	
Peter Antonieff	"Voyager"	Lorraine Antonieff
Terence Smith	"Mandalay"	
David Ahern	"Sweet Dreams"	
Mark Sutherland	"Lady J"	Jenny Sutherland
Jamie Renwick	"Uppercut"	
Mats Dahlstedt	"Phoenix"	Maree Dahlstedt
Simon Beeston	"Sundowner"	
Ralph Wilson	"Atelier"	Suzy Wilson
Robin Holt	"Kattegatt"	
David Pforr	"RTFM"	Janelle Wishie
Peter Saich	"Daliance"	
Benjamin Davis	"Inflatable Mistress"	
Graham Valentine	"Piggy"	
Brendan Bourke	WG310Q	Anne Bourke
Jonathan Bloxsom	"Ukulele"	Lachlan Bloxsom
Bradley Mancini	"Caravelle"	Alice Mancini
Gregory McGuire	"Speculari"	

Social Members upgrading

FULL MEMBER	VESSEL	
Darren Pierce	- / -	
Sean Forrest	"Meridian"	

Past Members rejoining

MEMBER	VESSEL	ASSOCIATE
Colin McMahon	"Malua"	
Stephen Miranda	"Lauta"	
Peter Kelly	"Lilingwe"	
Hendrik Pienaar	"Elkington"	
Kevin O'Malley	"Pepper Too"	Rosslyn Ryan
Anthony Little	"L'Attitudes"	Vicki Little
Wilfred De Greef	"Making Waves"	
Kevin Bradley	- / -	

★ Vice-Commodore

Ahead of the Game Fish Tournament we inspected the Club's limited coast station **VH4ASF** and found the lights came on in the power supply and VHF.

On investigation as to why Brisbane Coast Guard failed to acknowledge our radio check, it was observed that the rooftop antenna was not on the roof, it was laying down in the shed. The RG-213U coaxial cable was nowhere to be seen on the roof either. A new cable run, a VHF set donated by GARMIN (thank-you!), and a loaner 7A power supply (yours truly) to replace the understrength club 5A supply, and we were underway.

We were obliged to use the old base station whip as the budget did not extend to a new one, and in the long term it will need to be replaced due to corrosion issues, but for now we are back on the air. On the broader subject of licensing of operators of marine VHF, your Vice-Commodore is an invigilator for the Office of Maritime Communications. If there is sufficient interest, we may organise a radio qualification weekend. Please contact the eNews editor or myself directly.

Regards

Chris Goodhew
Vice-Commodore



★ Rear-Commodore

My thanks to the Board for the vote of confidence in installing me as David Cameron's successor; I trust that my demonstrated commitment to our Club over many decades of boating life finds favour with my fellow Members too.

Thanks also to David for his steadying hand in the role and our best wishes to both he and Margaret in enjoying their post-Flag lives afloat.

The Club's annual 'Champagne Cruise' continues to be one of their pleasures and David has created a delightful 2016 itinerary for the May event, of which more on p.16 of this eNews. More info/registrations next edition.

The role of the Rear will, of necessity, have to evolve slightly, with my already heavy involvement in the marketing and communications functions of our Club. On the one hand, there are natural synergies with co-ordinating events and hosting activities afloat and ashore; on the other, there are only so many hours in already very long days.

Another Board member or extra pair of hands may be called-on to assist with such events, and, hopefully, I don't bump into the eNews editor at the bar either – that would be just too weird.

Matt Tesch
Rear-Commodore



★ Hon. Treasurer

As you are no doubt aware, the Club is transitioning to new managers. Our new managers, Julie and Craig – who you can meet on p.15 and very shortly in person – are keen to build on the solid foundations laid by Dori and Bob and we look forward to the roll-out of a variety of exciting new initiatives!

While we wait for the professionals to start, on Monday 7th March, please continue to be kind to the caretaker managers: our Commodore, ably assisted by the Hon. Secretary.

February was a busy month on many fronts for our Club – not only the start of the fishing season but also the annual Game Fish tournament.

Both events epitomise the spirit of the Club so it was great to see Members and guests getting involved and having a wonderful time.

Also over the past month we've re-engaged with our eNews advertisers and are delighted with their continued support, both in advertising and event sponsorship. Many thanks indeed! Please get in touch if you would like to advertise or contribute in kind.

Finally, a very warm "welcome aboard" or "welcome back" to all our new or rejoining Members opposite.

Tracey Watts
Director / Hon. Treasurer / Membership
Mobile: 0417 892 887



★ Constitution Cup

Race organiser Paul Coleman rendered sterling service in rounding up nearly a dozen vessels to compete for the Cup on Australia Day and the Vice-Commodore survived the unexpectedly energetic thong-throwing competition ashore. The cloudy conditions failed to deter spirits and a decent breeze delivered good sailing weather. A great feast of snags, burgers, chops and onions was had by all!



Theme for this month: **“Easter at the One Mile”**

LSC eNews PHOTO COMPETITION

Entries close Wed. 30th March
Email: enews@littleshipclub.com.au

Your image could be on the front cover of the April 2016 eNews – PLUS 1,000 points credited to your Member account to spend at the Club on your next visit!
Usual Terms & Conditions apply.



NU
plus Marine Chandlery

Bolt & Hose Supplies

Karen Davy

Phone: **3286 9077**

Shop 18/63 Shore Street West, Cleveland Qld 4163
Sales Fax: (07) 3286 9008
Accounts Fax: (07) 3286 7470
P O Box 1092, Cleveland Qld 4163
Email: karen@nubolthose.com.au

Bolts
Nuts
Screws
Hose
Valves
Fittings

Cleveland



Director (Grounds & Works) Bill Canfield delivers glowing news of WB#1 on 6th and 7th February.

I am delighted to report that WB #1 for 2016 was a well-attended and resounding success. To everyone who fronted-up and gave generously of their time and effort to support our Club, a huge vote of thanks!



Several of your Board members had already made substantial inroads into the task list, and everyone really appreciated fellow Members stepping forward to lend a hand to fill in the gaps in a timely manner.



The Club and gardens are looking spick'n'span and no less than **nine tonnes** (three truckloads!) of surplus gear, sundry items and rubbish was removed from the grounds.

Thanks to the efforts of our Vice-Commodore and GARMIN, the principal sponsor of our Game Fish tournament, we are back on the air with our own VHF installation.

A couple of outstanding items on the published 'task matrix' list of maintenance jobs – including the amenities block – are also in hand.



As the Commodore has flagged in his emails to Members, we will be conducting periodic Working Bees at our Club throughout the year.



The task matrix – which will be updated on the Club website in advance of each WB – lists a range of maintenance jobs ranging from specialist skills to general handy-person assistance. As each WB email update arrives in Members' inboxes in coming months, please check our Club website for task matrix details.



You'll see there's always a little something for everyone, and I hope we will see even more Members lending their time and talents as and when they're able during 2016.



WB#1 really showed what's possible when that '20/80' ratio rebalances more to lots of smaller '50/50s' – many hands do make light work, and great social times: see you soon!

SPECIAL SLIPPING OFFERS FOR LSC MEMBERS!

LSC Members in the market for a lift or haul-out to have some antifouling or hull work done are in luck, with special offers from Jenny and Bill Morley at **Pelican Slipways**, and the good folks at **Redland City Marina**.

Pelican Slipways has a special offer for Members at their yard until 30th June – savings estimated to be equivalent to a full year's Club membership – for mono-hulls under 30ft LOA, including: slipping fee, 2 days out, water blast and environmental levy, 1/2hr scrape down, primer, antifoul with high quality ablative antifoul, all for \$60 per foot.

Redland City Marina is offering LSC Members to book in for a haul-out on any day of the week, stay for 5 nights and receive another 2 nights FREE OF CHARGE! – in addition to a range of very delectable per-foot, per-night, per-hour or per-week costings for a wide range of on-site services.

Please see the respective advertisements in this eNews edition for full contact details!



★ Fishing Section



Fishing Section : February competition



A very good roll-up of 25 FS members resulting in eight weigh-ins. This was a very encouraging result considering weather conditions of 25-knot winds and rain squalls.

Special thanks to the captain of “*Brine Cutter*”, Evan Rees, for the donation of prawns for our enjoyment at our first weigh-in. Thank you, Evan!

Full results – including points – are shown in the table at right. I understand that our hard-working eNews / website editor will be uploading the Fishing Points PDF guide to our brand-new **Fishing Section** on the Club’s website very soon.

You can also find the full table of 2016 competition targets there, too.

If Members have any fishing-related contributions or links for our section of the website, please pass them to either myself or the Fishing Secretary.

Looking forward to seeing everyone for our next outing on 11th-13th March with your best Perch and Flathead.

Col Barker
Fishing Captain
“*Elizabeth*”
Mobile: 0400 305 377

Angler / catcher	Vessel	Points
Fish Section		
Gary Skelton	“ <i>Kestral</i> ”	18
Ashley Roberts	“ <i>Aquation</i> ”	9
Arthur Mobsby	“ <i>Alina</i> ”	8
Col Barker	“ <i>Elizabeth</i> ”	8
Pam Mobsby	“ <i>Alina</i> ”	5
Bill Morley	“ <i>Sea Minx</i> ”	4
Crab/Squid Section		
Jay Neilson	“ <i>Karma</i> ”	14
Ashley Roberts	“ <i>Aquation</i> ”	6
Lachlan Roberts	“ <i>Aquation</i> ”	6
Rowan Roberts	“ <i>Aquation</i> ”	6
Mark Lopez	“ <i>Beowolf</i> ”	5
Largest Species	(Whiting) Pam Mobsby	
Largest Sandy	Jay Neilson	
Largest Muddy	Lachlan/Ashley Roberts	
Boat Points	“ <i>Kestral</i> ”	

Your first port of call is Millkraft ... for all your boat repair and repaint needs.

We can accommodate repairs and maintenance to timber and fibreglass vessels to a maximum of 30 metres. We have facilities to carry out refit, fit-outs, antifouling, painting and repaints. Travel lift facilities are available as is our undercover work area at Shed 3/28 Wyuna Court, Hemmant.

Peter Hardisty owns and operates Millkraft Boat Yard Pty Ltd. Peter has worked in the boatbuilding industry for over 40 years since being apprenticed in 1970.

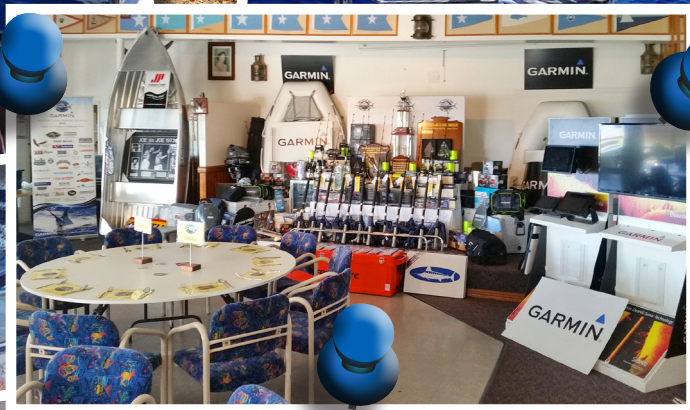
If your boat needs some repairs or a repaint, call Peter on **0418 155 921** or **3893 2263** or email millkraftboatyard@bigpond.com

MILLKRAFT BOAT YARD PTY LTD is a proud sponsor of the LSC Fishing Club.



REPAIRS • MAINTENANCE • REFITS • PAINTING • SPRAYING • SLIPPING FACILITIES AVAILABLE

★ Game Fish 2016 Tournament





RESULTS



Game Fish Section

Highest Point Score Day 1	Brett Horner
Highest Point Score Day 2	Jeff Payne
Bettyann's Mystery Time	Luke Cameron
Champion Angler Light Tackle	Jason Smyth
Champion Angler Heavy Tackle	Brett Horner
Champion Angler Tuna	Troy Arbury
Champion Other Species	Megan Thomsen
Runner Up Junior	Lachlan Bloxsom
Runner Up Female	Kirsten Ripley
Runner Up Male	Jason Smyth
Champion Vessel under 8 metres	"Garmin One"
Champion Vessel over 8 metres	"Ukulele"
Champion Riviera	"Red Dog"
Champion Junior	Matt Dietrich
Champion Female	Megan Thomsen
Champion Male & Overall	Brett Horner
Trevor Clark Interclub Shield	"Garmin One", Surfers Paradise Club

FAST FACTS!

23 BOATS
66 SENIOR ANGLERS
6 JUNIORS
6 CREW
60 STRIKES
46 HOOKUPS
31 TAGS
5 BLUE MARLIN
3 BLACK MARLIN
7 TUNA
4 WAHOO
3 MAHI MAHI

I HAPPY
FREDDIE FLINTOFF
FILM CREW!

Reef Rumble

Species / category	Winner	Points	Prize fish
Snapper	Mal McDougall	1113.85	
Pearl Perch	Todd Hastie	240.00	
Yellowtail Kingfish	Trevor Higgins	161.54	
Amberjack	Mitchell Bogнар	366.00	
Spanish Mackerel	Jacob Mirosch	1027.66	
Jewfish	Adam Tilson	671.99	
Senior Fish of the Tournament	Mal McDougall	228.57	Snapper
Junior Fish of the Tournament	Jacob Mirosch	152.00	Spanish Mackerel
Champion Male	Mal McDougall		
Champion Junior	Jacob Mirosch		
Champion Team	Spanyid	3381.00	



Special thanks to GARMIN and all our sponsors (see next page), to our GF Captain Ian Bladin and Secretary Steve Carroll for adjusting commitments to accommodate Freddie and the film crew, and to Straddie Ferries for kindly holding "Minjerribah" for a few minutes for Freddie and his green BBQ van!



★ Thanks to our Game Fish 2016 sponsors!



LOCAL BATTERIES



PrintBuz.com.au

LESSIDE



SHIMANO



TOWCAM.COM.AU



- WIL-CO CIVIL CONSTRUCTIONS •
- NOTTAGE FINANCIAL SERVICES •
- MILLKRAFT •
- CLEVELAND UPHOLSTERERS & TRIMMERS
- CHERAS INDUSTRIES
- ALEXANDRA HILLS DISCOUNT DRUG STORE



MSQ NOTAM SUMMARY

A number of advisories are current for works in the Brisbane River, including:

- maintenance on the Incitec North Wharf in the Pinkenba Reach from 24th February to 26th August on weekdays 0630-1600hrs [advice 24/2/16]
- demolition of disused wharves in the vicinity of Maritime 3 in the Hamilton Reach [NOTAM 030(t)]
- dredging in the Lytton and Quarantine Reaches, between the Kirra Street boat ramp and the Cement Australia berth [NOTAM 064(t) 22/2/16]
- maintenance work on the Merivale Bridge, lasting approx. 12 months from 20th February, to install a moveable gantry under the bridge, which will reduce the nominal clearance height of 11.5m above HAT by 3.0m beneath the gantry position [NOTAM 049(t) 8/2/16]

An underwater obstruction has been detected on the seabed of the Spitfire Channel, at position latitude 27°03.4230'S longitude 153°17.6720'E and caution when fishing, trawling or anchoring is advised. This is a permanent NOTAM [059, 18/2/16] and paper charts should be marked.



North Stradbroke Island Economic Transition Strategy

The Queensland Government is committed to phasing out sand mining on North Stradbroke Island by 2019, expanding the island's existing industries to help ensure a strong and sustainable economy for all who live there.

The draft NSIETS is supported by 16 actions, which aim to:

- drive sustainable tourism
- expand education and training opportunities
- foster business development and growth.

This document is not Queensland Government policy, but is designed to generate community input on actions that will make a difference for North Stradbroke Island. The feedback period, including an online survey and the opportunity for interested parties to make written submissions, closed on Friday 5th February.

LSC has been an active contributor to this process, along with the Straddie Chamber of Commerce and other local businesses, and we will keep Members informed of news.

Simon Steenland (of "South Passage" fame) has been a member since December 2011. We caught up with him at Horseshoe Bay on his current boat "Belle", a 38-foot wooden Sayer. Naturally enough he built her himself with his boatbuilder friend and fellow Dutchman Eelke. The workmanship is truly exquisite.

Funniest moment afloat? We were at the Magnetic Island marina and my wife Denise was down on the dock chatting to some friends. I was leaning on the lifelines and for some inexplicable reason it snapped and I fell in the water. The people on the dock were laughing so hard they couldn't provide assistance. Someone was unkind enough to say that the reason the lifeline gave way had nothing to do with quality of its construction.

Reason for name of "Belle"? My eldest daughter Lolo loved the sound and it meant 'beautiful'.

When my favourite tippie (quality Scotch) is not available I drink crap Scotch!

Most people don't know that I ... was a tank driver in the Dutch army and had a little sideline business selling perfume to the American forces based in Germany. '4711 cologne' was my specialty. I couldn't speak much English but money speaks all languages!



PINK PALLETS

AUSTRALIA-WIDE SERVICE

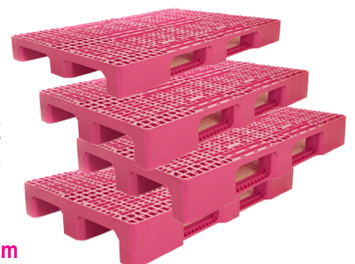
SPECIALISING IN ALL
PALLET SERVICES:

- BUY • SELL • REPAIR
- SECOND-HAND • MANUFACTURE
- CONTRACT RECOVERY SERVICE

Phone: 07 3805 1056

Mobile: 0427 204 787

Email: pinkpallets@bigpond.com



Our kids' menu

MAINS

Bowl of chips	6.50
Bowl of wedges with sour cream and sweet chilli sauce	9.00
Battered fish and chips	9.50
Chicken nuggets and chips	9.50
Chicken schnitzel and chips	9.50
Ham and pineapple pizza and chips	9.50
Rib fillet steak and chips	9.50

DESSERTS

Ice cream with chocolate topping	4.00
Ice cream with strawberry topping	4.00



Like us on Facebook and check out our posts updating you with "What's On at the Club."

- **BAR OPEN** Every day from 10am
- **BISTRO LUNCH** Wednesday to Sunday
- **BISTRO DINNER** Wednesday to Saturday
- **FUNCTIONS** welcome
- **PRIVATE DINING** bookings available
- **TOUR BUSES** welcome
- **WEDDINGS** our speciality
- **FAMILY EVENTS** for kids of all ages
- **BOOK OR ENQUIRE** today: phone 3409 9022

Bistro menu

BREADS FOR WASHING-DOWN WITH

Garlic bread	v	6.50
Cheesy garlic bread	v	7.50

MOREISH SNACKS

Bowl of chips	v	6.50
Spring rolls with sweet chilli sauce	v	6.50
Wedges with sour cream and sweet chilli sauce	v	9.00
Salad wrap with chips	v GF IF NO CHIPS	8.50 / 9.50
Ham and salad wrap with chips	GF IF NO CHIPS	9.00 / 10.00
Chicken and salad wrap with chips	GF IF NO CHIPS	10.00 / 11.00

SCINTILLATING SEAFOOD

Oysters				
Natural	GF	1/2 doz	17.00	1 doz 30.00
Kilpatrick	GF	1/2 doz	19.00	1 doz 34.00
Plate of prawns (500g) with seafood sauce	GF			20.00
with seafood sauce and salad	GF			23.00

HAPPY BURGERS* (served with chips)

(*Available Lunch only, last orders by 1.45pm)

Chicken schnitzel	13.00
Beef	14.00
Steak (rib fillet)	15.00
With the lot	+ 3.50 extra per burger
Extras: bacon	+1.50; egg, onion +1.00 ea; cheese, pineapple +0.50 ea

PACIFIC PARMIGIANA (served with chips and salad)

Chicken	16.50
Hawaiian	17.50
Mexican	18.50

SOLID AUSSIE FAVOURITES

Pie with chips and gravy	7.00
Bangers, mash and gravy	13.00

HEARTY MAINS (with vegies & mash, or chips & salad)

Roast chicken and gravy	GF IF NO GRAVY	14.00
Crumbed calamari		14.00
Quiche – tomato, fetta and spinach	v	15.00
Battered fish		16.00
Grilled fish	v GF	17.00
Tempura prawns		20.00
Seafood basket on a plate		21.00

FROM THE HOT PLATE* (served with chips and salad)

(*Lunch orders by 1.45pm; dinner orders by 7.45pm)

Chicken skewers with honey and soy	15.00	
Lamb cutlets with mint sauce	GF IF NO CHIPS	20.50
Rib fillet with gravy, pepper or mushroom sauce		22.50
	GF IF NO GRAVY AND NO CHIPS	

SCRUMPTIOUS SIDES AND EXTRAS

Side of salad	v GF	or side of chips	v	3.00
Garden salad	v GF			6.50
Bowl of mixed vegetables	v GF			7.50

Sauces

Tomato or BBQ (per serve)	0.50
Aioli, seafood or tartare (per serve)	1.00
Sour cream or sweet chilli (per serve)	2.00
Gravy	small 1.50 large 2.50
Pepper or mushroom	small 2.00 large 3.00

DESSERTS FROM THE BOARD

Daily specials, served with cream or ice cream	7.50
--	------

v = vegetarian GF = gluten free

7022 **Tyrepower** Capalaba Call Us Today! 07 3245 7022

Little Ships Club Members

****DISCOUNTS APPLY***
MENTION OUR ADVERTISEMENT

Call your LSC member **Scott Inglis**



Independently owned & operated
stock all major brands of Wheels & Tyres

93-95 Redland Bay Road, Capalaba

7022 **Tyrepower** Capalaba Call Us Today! 07 3245 7022



Meet our new Managers



Together, Julie and Craig Hackett bring a great breadth and depth of nautical, business and hospitality experience to our Club: please make them welcome.

“Craig and I are so excited to be making this latest ‘sea change’ in our lives, over to the Little Ship Club,” Julie said a few days ago, from deep within a stack of removalist cartons. “We came over for the Game Fish weekend, to meet the locals, meet the team and get a hands-on feel for the Club when it’s pumping – a wonderful introduction!”

Julie’s professional life has been varied and fascinating, the one constant being her love of working with people. Educated in Brisbane, and with a pharmacy background, she yearned for a sea change – literally! Following her brother’s footsteps, Julie worked initially as cook, deck-hand and second mate on various commercial fishing boats in WA, the Gulf of Carpentaria and in the Southern Ocean. Whilst at sea, Julie completed her Master Class 5 (Skipper 3) at Fremantle Maritime College.

Most recently, Julie has been Practice Manager for a major orthodontics business, looking after 10 facilities throughout the greater Brisbane area and abroad. Her duties were varied, and included HR, staff recruitment and training, marketing, accounts, patient care, project management and much more besides.

Craig is a typical Aries – full of fun, compassionate, and always on the spot to lend a hand to anyone in need. He was also educated in Brisbane (the same school as Julie although they didn’t know it at the time!). Craig is very creative and initially ventured into screen printing before returning to TAFE to complete a Plumber’s and Drainer’s Certificate – two disparate trades but part of the diversity that kept Craig grounded. *(Ed: typical Aries indeed!)*

For the past four years Craig has worked in the security industry, including responsibilities for staff rostering, receipt and distribution of classified material, and monitoring of the office environment for WH&S control.

Craig’s creative bent extends to cooking, and his culinary efforts have won praise not only from Julie, but all his friends who are quick to invite him round to dinner provided he cooks! Craig throws everything into his work but always has time for sport and leisure. With Julie, he loves to pack the fishing and camping gear and head off to spend time by the water – a recreational goal which is going to be much more within reach at the One Mile on beautiful Straddie!

“We’ve got some great ideas to bring to the table,” says Craig, “after talking to Members, Flag Officers and the Board, and listening to everyone’s thoughts, but we’re going to ‘hasten slowly’ as it were, and start building on the great foundation that the Little Ship Club already has. Looking forward to saying ‘g’day!’”



Traditional & Digital Signage

Straddie Signs

Peter Jackson
0409 617 540
straddiesigns@optusnet.com.au

Vendor to Sibelco
No: STR 1060
15 Bingle Road, Dunwich

- Vehicle graphics
- A-frames & Corflutes
- Banners & Stencils
- Vinyl lettering
- Perspex cut to size
- Timber engraving
- Reception signs
- Safety signs
- 3D & Styrene lettering
- Digital printing, stickers
- Posters
- Event signage

FREEZETEC

Marine & Recreational Vehicle Equipment & Services

Specialists in
Custom-made refrigeration

- Eutectic refrigeration • 12v systems
- Custom cabinets • Built to suit your requirements

Sales and Warranty agent for:

Cruisair
Marine Air-conditioning

Ice Makers

U-LINE
CORPORATION

WAECO
by Dometic GROUP
Portable Fridges and Accessories

Marine and Caravan Air-conditioning

NOVA KOOL
Fridges and Freezers

SALES • INSTALLATION • SERVICE

7-9 Grant Street, Cleveland Q 4163
Phone: 07 3286 3522 Fax: 07 3286 2382
Email: manager@freezetec.com.au
www.freezetec.com.au



Two great cruising events for your calendar planning, one for the commitment-free adults in May, and one for the whole family during the school holidays in September! The “Champagne Cruise” in May is an LSC classic and the Interclub Bay Cruise in September is in its 41st year!

2016 LSC Champagne Cruise

This year's 2016 Champagne Cruise will be held from **21st to 28th May**. Two new venues have been arranged this year – both looking forward to welcoming we cruisers! – and the program presently looks like this:

Saturday 21st Arrive at Little Ship Club, settle in, renew old and make new friendships over dinner in the Bistro that evening.

Sunday 22nd A free morning followed by a sausage sizzle for lunch. This is being provided by David and Margaret Cameron and there is no charge. After lunch, stay and enjoy the hilarity of a game of mini-golf in the Club grounds. Dinner arrangements, at this stage, are a ‘work in progress’ but we’re confident that new managers Julie and Craig will have some interesting news soon!

Monday 23rd Leave the One Mile at your leisure and proceed to Blakesleys. Bring your own drinks, nibbles (even lunch!) ashore and spend a relaxing afternoon. Own arrangements for dinner and sunset over the Bay.

Tuesday 24th Proceed to Gold Coast City Marina in the Coomera River. Complimentary berths have been arranged as well as discounted fuel prices. That evening dinner will be in the licensed Quarterdeck Restaurant at the marina. The meals are reasonably priced.

Wednesday 25th For those in need of shopping, Coomera Railway Station is only about 5 minutes away with shopping centres at both Helensvale and Robina. A guided tour of the marina facilities and the Riviera boat building complex is being arranged, and dinner that evening will again be in the Quarterdeck restaurant.

Thursday 26th We leave Gold Coast City Marina and make our way to Southern Haven on South Stradbroke Island, just south of Tiplers. Take our own lunch ashore (barbecues available) and enjoy another afternoon of fellowship or, for those more adventurous, a walk to the surf beach, or to Tiplers for a cold drink ... or even just sitting watching the boats pass by. Own arrangements for dinner.

Friday 27th A free morning followed by a barbecue lunch catered for by David and Margaret Cameron, with a nominal charge of \$10.00 each to cover costs. After lunch, presentations will be made and the cruise formally closed after what will no doubt have been a great week. Again, own arrangements for dinner.

Saturday 28th Sadly, we say farewell and make our way back home, or spend another night or two at the beautiful southern end of the Bay.

As always, the popular ‘fines sessions’ will be held on most days, and monies raised given to one of the Volunteer Marine Rescue organisations which assist us in times of trouble.

More information Please contact David and Margaret Cameron **after 29th March** by phone on 07 3286 1929 or 0418 881059 or send an email to: david@cambros.com.au

2016 Interclub Bay Cruise

The ICBC week has been a stalwart for four decades and this year will be held from **17th to 24th September**, during the Spring school holidays. LSC fully supports this event – including an overnight stop by the fleet at the Club – and is participating in the planning meetings now underway. The draft program outline currently looks like this:

Saturday 17th Gather at and depart from Manly (either / both RQYS / MBTBC)

Sunday 18th At LSC (One Mile and Deanbilla – with Club courtesy bus for transfers as needed)

Monday 19th Proceed south to Horizon Shores / VMR Jacobs Well / Calypso Bay

Tuesday 20th At BOAT

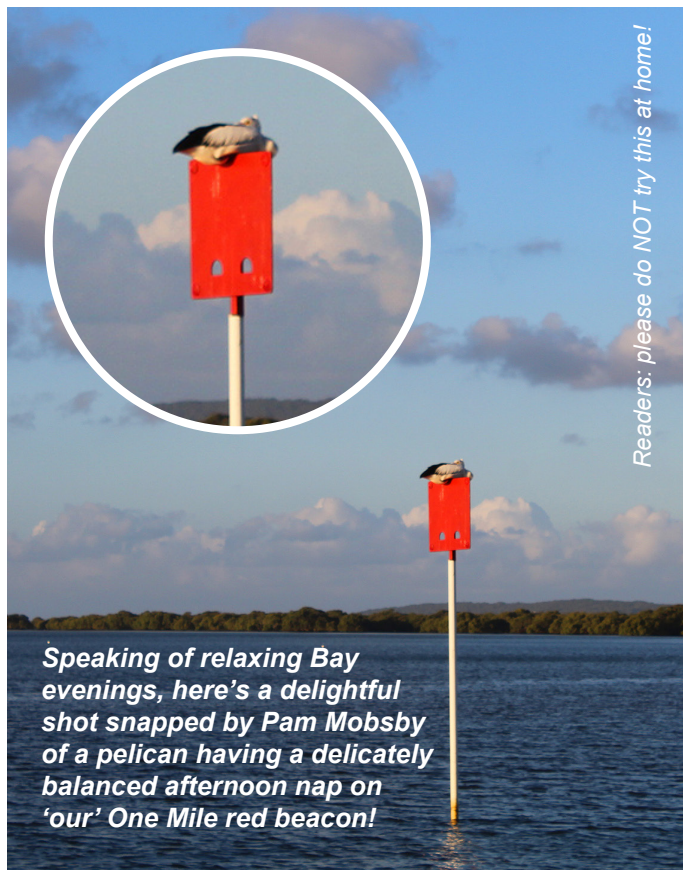
Wednesday 21st Free Day at Tiplers / MBTBC Haven / BOAT / GCBC – location/s TBA or flexible day

Thursday 22nd The Boatworks

Friday 23rd Cruise to Dux's or Canaipa

Saturday 24th End of ICBC cruise, vessels return to home ports.

More information Please contact LSC Rear-Commodore Matt Tesch by email: enews@littleshipclub.com.au if you would like to be kept informed as the program develops, or visit www.interclubbaycruise.org.au to find out more and register directly with the ICBC organisers.



Readers: please do NOT try this at home!

Speaking of relaxing Bay evenings, here's a delightful shot snapped by Pam Mobsby of a pelican having a delicately balanced afternoon nap on 'our' One Mile red beacon!



There's a lot of people to thank, this edition: first and foremost our Members for their contributions and our advertisers for their renewed and ongoing support.

I had anticipated that the February edition would be a double-month 'one-off' 24pp issue but, try as I might to slim down, here we are again – and there's still material held over for next time!

Our Club owes a debt of gratitude to the Commodore and Hon. Secretary for relocating their lives to the One Mile to manage the caretaker process as we transition from the solid footing which Dori and Bob left for us to the exciting potential of what Julie and Craig are bringing to the table.

In the midst of all this dynamic change we have delivered a solid performance in the Constitution Cup, a well-supported Working Bee effort on the Club grounds, and two outstanding fishing events – with the added stress / icing of our international visitors' presence.

Throughout, I have been privileged to work with a fully-committed Board who are never further than a spanner, email, phone call or quick Flyer trip away. The past few weeks have seen a truly team effort (yes, I know that's a well-banded cliché but this is one of those times it's both merited and justified) and the effort, time, co-ordination and volunteer contribution which has been given 'behind the scenes' is enormous and something of which we can all feel proud.

Our no-longer 'new' [website](#) has begun 'delivering the goods' as Roger noted in his report, with a steady up-swing in functions, weddings and event enquiries. It is pleasing to have a look at the back-end statistics, just six weeks after the site went live, and note that it has received more than 208,000 'hits' with more than 2,500 unique visitors making more than 3,500 visits. In the full month of February, more than 89% of the 98,000 hits were from Australian visitors, so you can see that the word about our 'little piece of paradise' is definitely spreading and gaining momentum! Our Club's [Facebook](#) page has also seen a 28% increase in 'Likes' at the end of February, for a range of posts made since the Game Fish weekend, and this appears to be another steadily-growing trend.

On a less 'electronic' note, LSC produced a handy, year-at-a-glance A4-size full-colour 2016 calendar with the support of our advertisers and suppliers, and copies (for traditionalists like me!) are still available at the Club.

That's all from me for now; if you bump into the Rear-Commodore, please be polite otherwise things could just get too weird.

Deadline for ALL material for the next LSC eNews edition is Wednesday 30th March.

Please get in touch at: enews@littleshipclub.com.au

Cheers until next month.

Matthew Tesch

- Sea-lift (boats to 60ft) • Chandlery • Boat storage
- Slipway : mono/multi-hulls, houseboats & trimarans
- Hardstand facilities, service area and refit sheds
- Shipwrights and mechanical repairs



Join us on our Facebook page

Phone: 07 3207 7506 Fax: 07 3207 9334

Email: info@redlandcitymarina.com.au Web: redlandcitymarina.com.au

Redland City Marina is located at: 100 Beveridge Road, Thornlands Q 4154



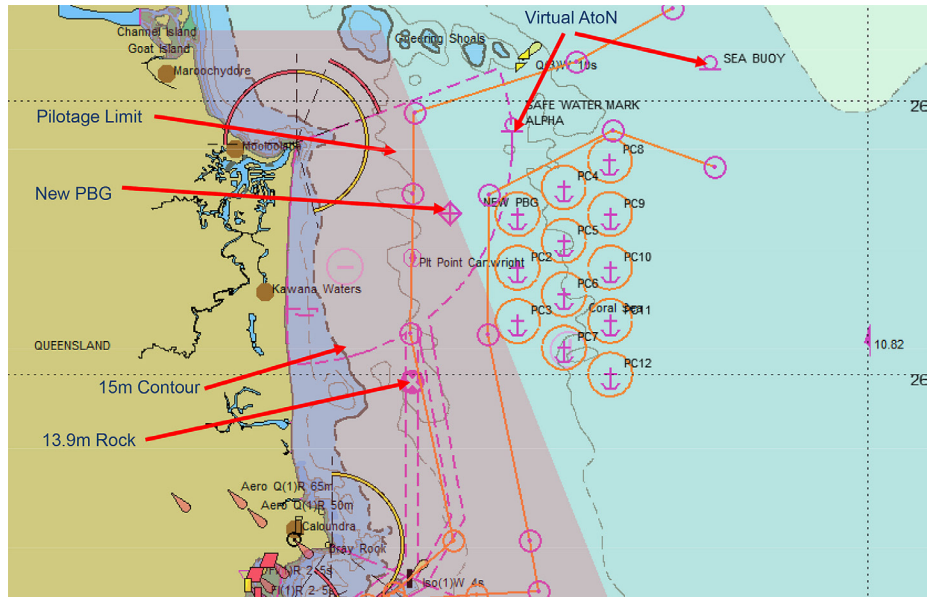
News from TMR and MSQ about some new shipping anchorages being planned, for outside the Pilot Boarding Grounds (PBG) off the Sunshine Coast, and flanking the Outer / Inner Reciprocal Markers in the Brisbane Roads in the central northern Bay.

An email of 11th February from the Executive Director, Maritime Services, MSQ, on behalf of the Assistant Regional Harbour Master (Brisbane) asked for these maps and information to be disseminated to QRBC members. As outlined at the recent meeting, MSQ is looking to implement designated anchorage areas at the entrance to the main North/West shipping channel (upper map) and at the Brisbane Roadstead in Moreton Bay (lower map).

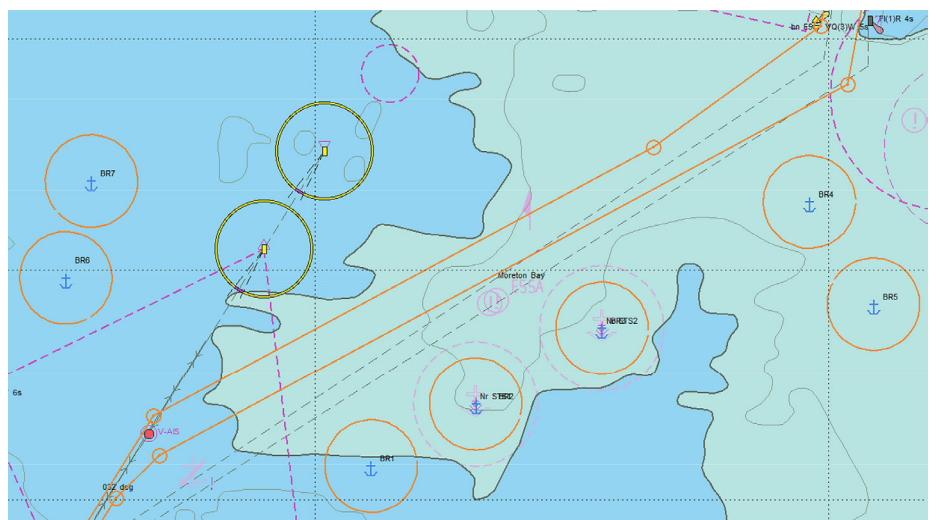
“This is in response to some safety matters that MSQ has identified and will provide a level of certainty to boaters on where they may encounter ships at anchor,” the email stated. The ARHM (BNE) is slated to attend the next QRBC meeting and is seeking comments from QRBC members about the proposed anchorage plans.

Any LSC Members with views on this subject should contact either the Commodore or Rear-Commodore – preferably by email – as soon as possible, and the feedback will be consolidated and passed on at the next QRBC meeting.

It appears, from the upper map, that some changes to the shipping channel are also contemplated, to steer clear of the unfortunately-sited 13.9m rock to the east of Currimundi / Buddina, although this was not expressly mentioned in the email request.




Above: Map extract of Sunshine Coast waters from the Maroochy River mouth (top left) to the Caloundra bar (lower left) showing proposed new anchorages. (Supplied: MSQ)



Above: Map extract of Brisbane Roads with proposed new anchorages. The Outer / Inner Reciprocal Marker beacons are defined (centre left) by yellow arcs. (Supplied: MSQ)



Follow news from the QRBC on Facebook at:
<https://www.facebook.com/QLDRecBoatingCouncil/>




WHO KILLED KENNY

PROUD TO BE ASSOCIATED WITH A GREAT VENUE LIKE LITTLE SHIP CLUB.

- *WEDDINGS
- *BIRTHDAYS
- *DIVORCES
- *ANY EXCUSE FOR A PARTY

Ph 07 3805 1056

Featuring the stunning work of Straddie *photographer Luke Casey* (and the LSC in June!), this gorgeous full-colour calendar is just \$15 from the LSC bar. Proceeds support the Point Lookout SLSC. A few copies are still available!



2016 NORTH STRADBROKE ISLAND CALENDAR



Important Update: Release of Independent Review of the Labrador Channel Extension

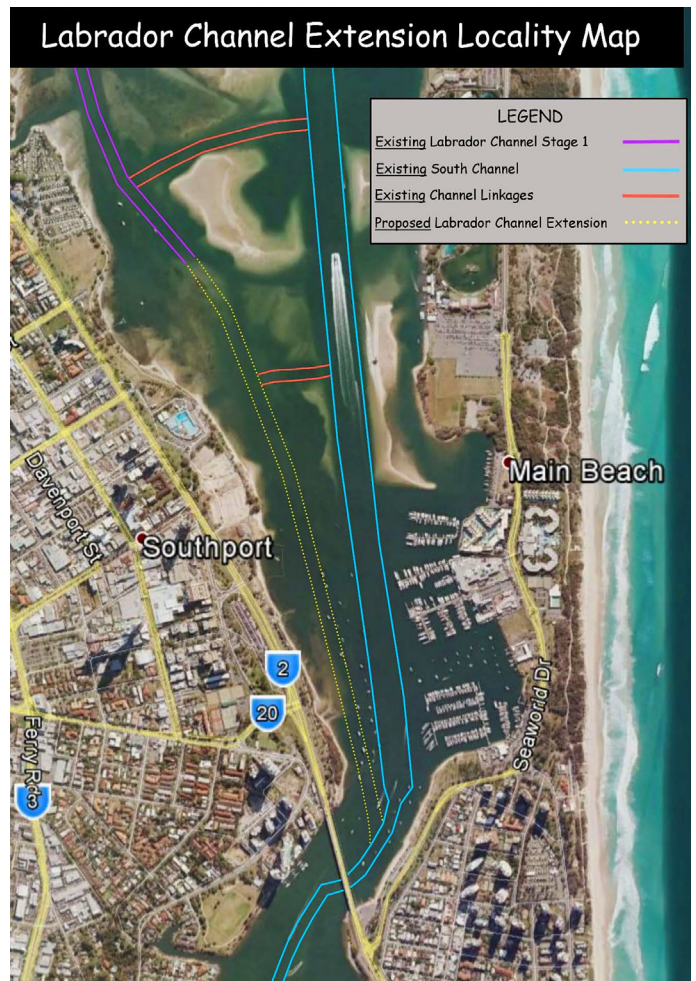
I am writing to inform you that the final report of the Independent Review of the Labrador Channel Extension will be publicly released via the Gold Coast Waterways Authority (GCWA) website www.gcwa.qld.gov.au [on] Friday 12 February 2016.

The independent review was initiated following a request by the Honorable Mark Bailey MP, Minister for Main Roads, Road Safety and Ports and Minister for Energy, Biofuels and Water Supply. It looked at aspects of safety, environment, amenity, waterways planning and community views on the Labrador Channel extension and involved interviews with interest groups and an online public survey. GCWA considers that the review, undertaken by global consultancy, Aurecon Australasia Pty Ltd, has successfully achieved the Terms of Reference. Importantly, it concluded that the Authority had lawfully secured all the necessary approvals to extend the Labrador Channel.

Some members of the community indicated they may support proposed changes in the Broadwater if additional information was provided about how the channel would be implemented, how moorings would be transitioned, the speed limits to be applied and safety requirements for the area. As a result, we will be preparing information to help the community better understand what's proposed.

In line with our plans and over the next 12 months, we will be gradually reducing the moorings in the area west of the Main Channel as tenants permanently leave their moorings and by relocating vessels to other mooring fields wherever possible. Most importantly, there will be no forced relocations of current mooring tenants.

Further investigations also have found that dredging is not required and the channel extension can be achieved solely through the installation of navigational aids.



In closing, I thank you for your patience and co-operation during the review period and as we seek to implement the best possible outcome for all who enjoy the Broadwater.

Kind regards,

Gold Coast Waterways Authority



pelican slipways

- Professional boat builders with combined experience of over 40 years
- Catering for traditional and modern boat maintenance, repair & refurbishment
- Full project management of all marine trades, including engineering, electrical & fabrications
- Slipping boats up to 50 ft and 40 tonne; multi-hull friendly

Contact us
P (07) 3829 0620 **E** pelicanslipways.200@bigpond.com
W www.pelicanslipways.com
Weinam Creek, Redland Bay QLD

★ Galley corner : daily vege serves for a week!

SUPER HEALTHY, TANGY, CRUNCHY LONGLIFE VEGE SALAD

SERVES

Ingredients list below serves 4 people in one seating. Serve cold after 1-2 hours' refrigeration.

Or make 1 larger (core dish) and 3 slightly smaller if desired. Core dish suitable for maintaining / refreshing* for 1 person for 7-10 days.

PREPARATION TIME

Approximately 1 hour (slightly longer if visitors drop by)

KEEPS

Refrigerated, up to 7-10 days* with periodic top-ups of veges and dressing mix*

(*subject to getting the dressing balance right - see below)



EQUIPMENT

- 1 x 10-11 litre bucket (half-filled with fresh water)
- 1 x bin (compost or otherwise)
- 1 x cutting board and cutting knife
- 1/2 dozen snap-lock plastic bags (sandwich size)
- 1 x large mixing bowl* (@ 20-30cm diameter, 8-10cm deep (*Tupperware or similar with secure lid – for mixing contents – is ideal)
- 2-4 smaller storage containers with lids
- Suitable drinks (for preparation process)

INGREDIENTS

- 1 x carrot (large)
- 1 x cauliflower (half-head for one seating only, use full head for ongoing mix base)
- 1 x **each** red, yellow, green capsicum
- 1 x red onion (large - brown onion also okay)
- 1 x **each** red and green chilli (large)
- 1 x bunch spring onions / shallots
- 1 x tray cut celery segments (or 1/2 bunch celery stalks)
- 1 x bunch radishes
- 2 dozen (approx) green beans
- 1/2 x head red cabbage

DRESSING

- 1 x bottle white vinegar (approx 375ml)
- 1 x bottle French Dressing (approx 330ml)
- 1 x bottle Italian Dressing (approx 330ml)

NOTE: Reduced-fat dressings have been found to not work as well in the final mix. Just sayin' ...

TOPPING-UP

If you have achieved the correct balance in the dressing mix (the vinegar helps preserve the freshness of the raw veges just shy of their becoming pickled), you should be able to work your way through any unused ingredients, topping up the core dish every day or two. Experience has shown that topping-up the dressing mix is needed only if adding new veges to the mix. Regardless, shake or mix / stir through the dressed veges thoroughly with each addition and taste to ensure maintained 'tang'.

METHOD

1. Arrange ingredients, cutting board, water bucket and bin to suit ergonomic needs.
2. Set the red cabbage to one side for now and pour a drink.
3. De-bunch radishes and peel onion, De-stalk celery and spring onions, cut ends to taste and into segments of 15-20cm each.
4. Float all raw veges in the water bucket and mix well to rinse.
5. Suggested method is to then select veges at random from bucket to cut and prepare - this helps ensure a balanced mix as you build the salad.

TIP: For larger items (e.g. cauli, carrot, celery and capsicum) prepare / mix half at a time to assist distribution through the salad.

How coarsely you cut / slice the veges depends on how much 'crunch' you want but the following is a proven success:

- **cauliflower** - pull apart individual florettes from the head, cutting off most of each stem
 - **carrot** - slice finely at an angle, stack about 1-2" of slices and cross-cut into quarters
 - **capsicum** - remove seeded cores, open out case and cut vertically into strips, then dice into about 1-2cm segments
 - **chilli** - remove ends and slice finely (but not so finely that seeds dislodge from rings - unless you want to adjust heat)
 - **spring onions** - slice trimmed stalks (white to green) into about 5mm-thick pieces
 - **celery** - halve trimmed stalks longitudinally then slice (green only, no knuckles) into about 5mm-thick pieces (cross-cut smaller if desired)
 - **radishes** - slice slightly thicker than carrots, cross-cut quarters
 - **beans** - remove ends then cut into about 5mm-thick segments
 - **red / brown onion** - slice thickly then cross-cut into quarters, sixths or eighths
 - **red cabbage** - slice / chop moderately coarsely into 1" strips (but see # 11 below before adding to vege mix!)
6. Pause to clean up work area and pour another drink.
 7. Continue cutting / preparation as desired until you have a good, balanced mix of colours, shapes, sizes and tastes.

Once you judge the proportions to be right for you, secure any unused veges in snap-lock bags (for topping-up later).

8. Mix bowl contents thoroughly (here's where a lid is handy to give it a good shake).
9. Begin adding dressings to mixed veges in equal one-third portions, about 50ml of each at a time (depending on bowl size).

Mix bowl contents thoroughly (here's where a lid comes into its own!) – shake or stir – after each added dressing.

10. Taste a spoonful of vege mix - you will probably need to add one, possibly two, more rounds of 50ml/50ml/50ml dressings.

Mix / stir contents thoroughly after each dressing round and taste - you need to 'creep up' rather than 'overshoot'!

TIP: The mixed dressing should be tangy, with just a hint of vinegar edge to pick up the accent of the chillis.

Objective is to have the veges maintain 'crunch' while being thoroughly wetted-through by the dressing – but not soggy or awash.

11. Red cabbage - mix quantity desired into completed veges if serving in one sitting within 4-12 hours.

If keeping a 'core dish' for topping-up the longlife version, be judicious with the red cabbage otherwise everything will be pink within days!

12. Once desired level of 'tang' and 'crunch' has been achieved, refrigerate both salad mix and unused, bagged veges.

Secure all equipment, tidy work area and pour another drink. Apportion chilled salads as desired into serving bowls after minimum 1-2 hours' refrigeration and serve with forks.



LSC BBQ area rules

NEW from 1st January 2016



The BBQ area is the covered structure equipped with both electric and gas hot plates, situated at the southern end of the LSC grounds. These facilities are available to both Members and non-Members by prior booking, and any impromptu arrangements will be at the discretion of the LSC Manager, subject to visitor traffic on the day.

Non-exclusive arrangements

Only Full Members have unrestricted use of the BBQ area at all times free of charge unless the area has been hired. Social Members and boating visitors may use the BBQ area on a non-exclusive basis for a fee of \$25.

Exclusive hire arrangements

The BBQ area can be hired on an exclusive basis by both Members and non-Members. Only Full Members are eligible for the Members' discount.

Payment is to be made in full seven (7) days in advance. A cancellation fee of 15% will apply. All food prepared is to be consumed in the BBQ area only.

Exclusive hire includes the following:

1. Area setup and preparation (tables and chairs)
2. Provision of crockery and cutlery
3. Cleaning of the BBQ area after use
4. Provision of cooking utensils if required (bond required)
5. Provision of tablecloths if required (at additional cost)

Bookings can be made by contacting the LSC Manager at manager@littleshipclub.com.au or phoning the Club on 07 3409 9022.

Our available floating plant includes:

- 3-in-1 Survey Work vessels – suitable for all marine works
- Gosford 25m crane barge – suitable for pile-driving and salvage & demolition works
- Todkill's Barge 12m – suitable for piling works
- 6 service barges

Note: all our vessels/barges are in compliance with Marine Safety Certification in accordance with the National Standards for Commercial Vessels NSCV Code.

Incorporated authority approved by MSQ through our Safety Management System.



Contact us:

Angie Todkill - Office: 07 3821 2227

Phillip Todkill - Director: 0407 156 577

25 Mainroyal Court, Raby Bay

Email: info@todkillsmarineservices.com

Web: www.todkillsmarineservices.com



Trading as Towing and Marine Services Pty Ltd • ABN: 80 141 395 771

- PILE-DRIVING • PILE-DRILLING • WHARF, JETTY & MARINA CONSTRUCTION • WHARF DEMOLITION •
- MARINE SALVAGE • VESSEL TOWING •





LSC Member prices

Current as at 1st January 2016

Membership Fees [^]	Price
New Full Membership Fee (including Joining Fee)	\$260.00
Full Member - Annual Membership Fee (Renewal)	\$210.00
Senior Rate (Full Member Fee less 50% discount)*	\$105.00
Associate Membership - Annual Membership Fee**	\$20.00
Social Membership - Annual Membership Fee	\$20.00
Club Member items	Price
Burgee – large (for vessels >13m LOA)	\$55.00
Burgee – small / medium (vessels <13m LOA)	\$45.00
Club tie	\$20.00
Club T-shirt	\$12.50
Club Polo shirt (adult)	\$39.50
(\$5.00 Member's discount)	\$34.50
Club Polo shirt (kids)	\$23.00
Stubby cooler	\$7.50
Club cap	\$12.50
Key-ring (floating)	\$2.50
Security Token (Deposit) – Members***	\$30.00
Security Token (Deposit) – Guests / Temporary Visitors (Refunded on return of token minus \$10 Services Fee)	\$50.00

Please note:

*You need to have been a member of the Club for 15 years or more and be aged 65 or over.

**Associates must be attached to a Full or Senior Membership.

*** Members Security Tokens are for Full, Senior & Associate Members' use only.

[^]Pro-rata membership is available from time to time at the discretion of the LSC Board.

IMPRESSUM

This eNews is published monthly by the Little Ship Club and produced by the volunteer efforts of LSC Members for the information of their fellow Members and interested visitors and advertisers. Any opinions expressed in the content of this and any other editions of the eNews are the personal views of the author/s or contributor/s and may not reflect the official views of the Little Ship Club.

PO Box 10 (1 Yabby Street) Dunwich Qld 4183 Phone 07 3409 9022

eNEWS / WEBSITE CONTACTS

ADVERTISING / BOOKING enquiries

Tracey Watts / 0417 892 887 / treasurer@littleshipclub.com.au

EDITORIAL / DESIGN enquiries

Matthew Tesch / 0406 777 077 / enews@littleshipclub.com.au

Little Ship Club (Queensland Squadron) ABN 31 009 823 590

Have you done something out of the ordinary, or had a special encounter on Moreton Bay? Share with fellow Members a couple of hundred well-chosen words and some interesting photos – send an email to: enews@littleshipclub.com.au

pelican's slipway cafe



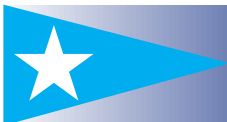
- Local produce used in our all-day breakfast & lunch menu
- Fresh juices, shakes & coffee with great cakes cooked in our kitchen
- Spectacular views over Moreton Bay & famous Pelican Slipways
- Function room for business meetings, staff training & special occasions

Kitchen open daily 7am to 2pm
reservations available for larger groups

P (07) 3829 2705 E pelicanslipways.200@bigpond.com

293 Esplanade, Redland Bay QLD





LITTLE SHIP CLUB PONTOON USE RULES

Access to the Club Pontoons is at the discretion of the Board (or Delegate) of the Club.

1. Casual and overnight berthing is available to Members and Non-Members. A booking to use the pontoon can be made with the Manager and must be confirmed 24 hours prior to arrival. If confirmation is not received the booking will be cancelled.
2. Advance bookings may be made not more than seven (7) days prior to the required date of occupancy. Bookings are for a maximum of two nights only with a departure time of 1000 hrs (additional nights or late departure are at the discretion of the Manager and subject to demand).
3. The vessel must be berthed by 1600hrs otherwise the booking will be deemed cancelled.
4. In all circumstances, arrival and departure from the pontoon must be reported to the Club's Manager either by phone or in person, to maximise usage.
5. Members' vessels must display a LSC burgee at all times while in occupancy. of the pontoon/s.
6. A Mooring Fee* will apply to Non-Members which can be paid in advance or on arrival and is non-refundable. A waiver of mooring fees (in whole or in part) may be granted at the discretion of the Manager, given a compelling commercial reason.
7. If leaving the Club premises while berthed at the pontoon, Members and Non-Members must inform management and accept the **Acknowledgement**.
8. Non-Members will need to sign into the Club as required under Licensing Law.
9. All vessels must have as a minimum Third Party insurance cover.
10. Members and Non-Members using the pontoon do so at their own risk.

11. Mooring of the vessel must maximise access for other vessels. The Board (or delegate) will direct re-mooring at its discretion.
12. Children under the age of sixteen (16) years are not to be left on board a vessel or on the pontoon in the absence of a responsible adult.
13. No alcohol is to be brought onto Club premises during bar operating hours.
14. Water is to be used for refilling water tanks only.
15. Power usage is to be limited at times of high load.
16. Major vessel repairs are not permitted on the pontoon.
17. The pontoon purpose is for Member and Non-Member use of the Club facilities, not as a marina.

Breaches of the rules may lead to the withdrawal of the visitor's pontoon access rights. The Manager of the Club is delegated the authority to enforce these rules.

*Pontoon Mooring Fees per part day / day

Large pontoon	Side pontoon
\$50 for <10m LOA	\$25 for all vessels
\$75 for 10-15m LOA	
\$100 for >15m LOA	

Acknowledgement by Members and non-Members

At the direction of the Manager (or an authorised LSC representative), the person in charge of the vessel must be prepared to:

- position or reposition the vessel, or allow management to position or reposition the vessel, at any point along the pontoon.
- depart or relocate the vessel, or allow management to depart or relocate the vessel (applicable to both pontoons and moorings) in the event of adverse weather conditions or other emergency should it be required.

GUIDELINES FOR MEMBERS-ONLY USE OF LITTLE SHIP CLUB SWING MOORINGS

Access to the Club swing moorings is at the discretion of the Board (or Delegate) of the Club.

1. Overnight mooring is available to Members only. A booking to use a swing mooring can be made with the Manager and must be confirmed 24 hours prior to arrival. If confirmation is not received the booking will be cancelled.
2. Advance bookings may be made not more than seven (7) days prior to the required date of occupancy. Bookings are for a maximum of two nights only with a departure time of 1000 hrs (additional nights or late departure are at the discretion of the Manager and subject to demand).
3. Members must be moored by 1600hrs otherwise the booking will be deemed cancelled.
4. In all circumstances, arrival and departure from the swing mooring must be reported to the Club's Manager either by phone or in person, in order to maximise usage.
5. Members' vessels must display a LSC burgee at all times while in occupancy of a swing mooring.
6. The Club has three swing moorings: 276 (15m), 277 (12m) and 279 (12m). Members must use the swing mooring that has been allocated to them.
7. If leaving the Club premises while mooring on a Club swing mooring, Members must inform management and accept the **Acknowledgement**.
8. Vessels must have as a minimum Third Party insurance cover.
9. Members using the swing moorings do so at their own risk.
10. No alcohol is to be brought onto Club premises during bar operating hours.

Breaches of the rules may lead to the withdrawal of the Member's swing mooring access rights. The Manager of the Club is delegated the authority to enforce these rules.





Membership 2015-16

Little Ship Club (Queensland Squadron)
Club address: 1 Yabby Street, Dunwich Qld 4183
Phone 07 3409 9022

ABN 31 009 823 590

Postal address: **PO Box 10, Dunwich Qld 4183**

Email membership@littleshipclub.com.au

Date ____ / ____ / ____

Note: even if you are renewing an existing membership, please complete all fields below to ensure we have your current details. If you are completing this form in hard copy, to scan/email or post, please print clearly.

This application is a **NEW** **RENEWAL** Membership LSC Member number (Renewals only) _____

MEMBER and VESSEL details

Title Mr Mrs Ms Miss Other (please specify) _____

First name _____ Surname _____

Address _____

Suburb _____ State _____ Postcode _____

Telephone (M) _____ (H) _____ (W) _____

Date of birth ____ / ____ / ____ Email _____

Associate Member name (if applicable) _____

Other club memberships? (please list) _____

Emergency contact name _____ Phone _____

Vessel name _____ Length (LOA) metres _____

Vessel type (tick) Light power craft Motor cruiser/yacht Sail Monohull Catamaran Trimaran

Vessel insured by _____ Policy number _____

NOMINATION statements

PROPOSER* name _____ Signature _____ Date ____ / ____ / ____

*I have been a Member of LSC for more than 12 months. The applicant is personally well-known to me and I recommend acceptance of this application for membership.

SECONDER* name _____ Signature _____ Date ____ / ____ / ____

*I have been a Member of LSC for more than 12 months. The applicant is personally well-known to me and I recommend acceptance of this application for membership.

MEMBERSHIP and OPTIONS prices

<input type="checkbox"/> Full Member Renewal (Annual)	\$210.00	<input type="checkbox"/> Full Member New (including Joining Fee)	\$260.00
<input type="checkbox"/> Senior Member Renewal (50% discount) ¹	\$105.00	<input type="checkbox"/> Pro-rata Membership (Full Members ONLY) ²	\$ <input type="text"/>
<input type="checkbox"/> Associate Member (Annual) ³	\$20.00	<input type="checkbox"/> Social Member (Annual)	\$20.00
Add if required <input type="checkbox"/> Security Token deposit ⁴	\$30.00 (access pontoons, laundry, showers, and after-hours entry)		
<input type="checkbox"/> LSC Burgee (vessels <13m LOA)	<input type="checkbox"/> \$45.00	<input type="checkbox"/> (vessels >13m LOA)	<input type="checkbox"/> \$55.00
			TOTAL AMOUNT \$ <input type="text"/>

PAYMENT methods

 We accept cash, personal cheque⁵, bank cheque⁵, money order⁵, EFT⁶ or credit card⁷ payments.

In person @ LSC (this completed form **must** accompany your payment at the Club)

By EFT⁶ to BSB 484-799 Account 044932641 Little Ship Club Date EFT payment made ____ / ____ / ____

By credit card⁷ Visa Mastercard I hereby authorise the total amount (above) to be charged to my nominated credit card.

Name on card _____

Card number Expiry CCV #

Signature (if completing by hand) _____ Date ____ / ____ / ____

IMPORTANT – please note:

- You need to have been a member of the Club for 15 years or more and be aged 65 or over.
- Any pro-rata amount for FULL Memberships will be advised at the discretion of the LSC Board.
- Associates must be attached to a Full or Senior Membership.
- Members' Security Tokens are for Full, Senior and Associate Members' use only.
- Cheques accepted subject to normal bank clearance processes; please make payable to "Little Ship Club Qld Squadron".
- In the transfer reference field, state [NEW surname] for new applications, or [member ##### surname] if renewal.
- Visa or Mastercard only, please, or EFTPOS at the bar.

SUBMIT application

 This completed form **must** be returned, either:

- in person @ LSC, 1 Yabby Street, Dunwich
- by post to LSC, PO Box 10, Dunwich Qld 4183
- by scan/email to membership@littleshipclub.com.au
- online* click the **green** 'submit now' button (Note: 'Save As' the PDF* to retain a file copy)
(*Available only on the interactive PDF form)

LSC Office use only

Date paid ____ / ____ / ____

Updated info ____ / ____ / ____

Card issued ____ / ____ / ____

Mailchimp checked _____

Security Token number _____

Processed by _____

Date completed ____ / ____ / ____

CLEAR FORM

SUBMIT FORM