

Workshop Solutions

One call for complete peace of mind



ARCTIC COMMANDER



Mastercool[®] Inc.
"World Class Quality"

Garage Equipment, Tools,
Training & Technology



Mastercool introduces its new ARCTIC COMMANDER line of machines. Equipped with the latest technology, all models come standard with an 8" command centre. The graphic user interface (GUI) will enable navigation through all functions and features with the greatest of ease. There is no longer a need to read any external instructions or paper manuals, simply sit back, watch and learn how to use your machines. All machines are also equipped with Wi-Fi capabilities; allowing for real time, interactive communication and troubleshooting.

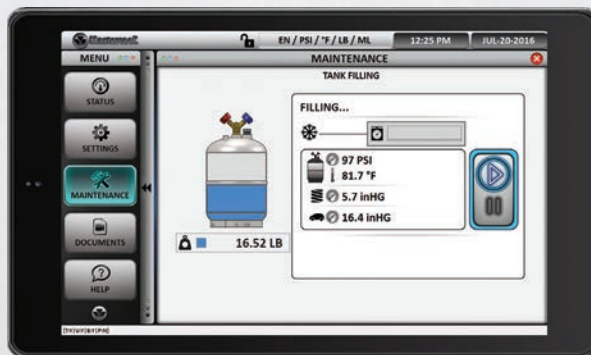
It's about time somebody introduced machines for the 21st century!

Fully responsive "touch screen" command centre...



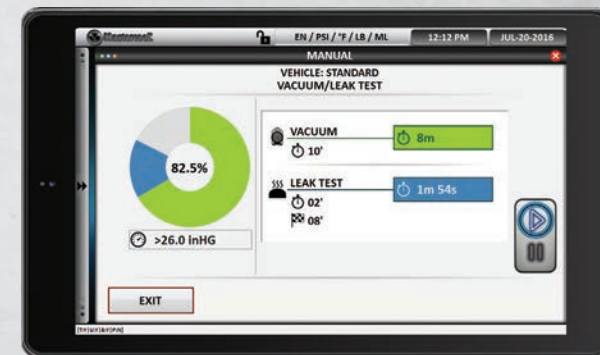
Home Screen

allows for quick touch selection of options



Tank Fill Screen

allows for visual, real time progress of tank filling process



Vacuum/Leak Test Screen

fully customisable options allows the user to personalise the times of vacuum and leak testing



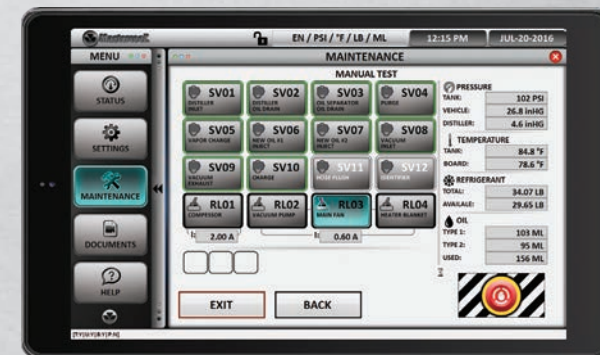
Status Screen

for quick reference of resources



Settings Screen

allows the user to select a default language, units, temperature, volume and weight measurement



Maintenance Screen

offered only to authorised service technicians allowing for quick and easy diagnosis



WI-FI

Wi-Fi capability allows for real time, interactive communication and troubleshooting



ON-BOARD UNITS CONVERSION CALCULATOR

Easily convert between different units of measure



ON-BOARD INSTRUCTION MANUAL

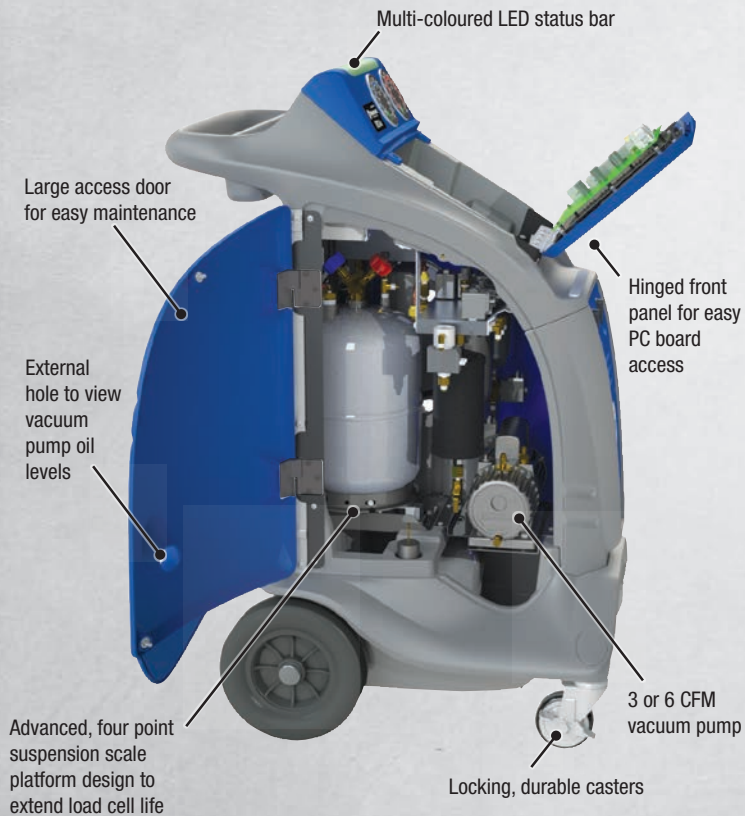
Watch and learn how to use the machine



SELF-DIAGNOSTIC CHECK

With a touch of a button, check all of the integral functions of the machine

Take a look under the hood...



COMPACT DESIGN
The machine's compact design makes it easy to maneuver and requires minimal shop space



TANK HEATER
Provides quick charging at high or low temperatures



COOLING FAN
Dedicated PC board cooling fan keeps the PC board consistently cool



ALARMS
AUTO FILTER ALARM
Warns that a filter change is required
FULL TANK ALARM
Notifies when tank is full
LOW REFRIGERANT ALARM
Notifies when refrigerant is low



AUTOMATIC OIL DISCHARGE
Oil is automatically discharged during the recovery process. If oil is present, it will drain into a graduated container clearly displaying the amount of oil that was removed



AUTOMATIC VACUUM LEAK TEST
Checks for leaks during the vacuum phase. The operation will be interrupted and an alarm will sound if leaks are found

MASTERCool COMMANDER 4000-E

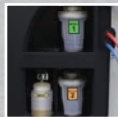
251 77 0210

Fully Automatic R1234yf & Hybrid Machine
with Printer & Identifier



REFRIGERANT IDENTIFIER

Integrated state-of-the-art Neutronics refrigerant identifier.



THREE BOTTLES*

Two sealed bellows design bottles for selection of oils or dyes. One used oil bottle.



HOSE FLUSHING

Eliminates the chance of excess (non-insulating) oils being injected into the A/C system. Utilised for service of hybrid vehicles.



THERMAL PRINTER

For a comprehensive, printed report.



STATUS LIGHT

Multi-coloured LED status bar offers visual confirmation of machine progress.

Custom
Design
Dust Cover
Included



R1234yf & HYBRID

» DESIGN CERTIFIED FOR COMPLIANCE WITH SAE J2843 «

SPECIFICATIONS:

- **Type of Refrigerant:** R1234yf
- **Service Procedure:** Fully automatic or manual
- **Voltage:** 110 V / 60 Hz or 220 V / 50/60 Hz
- **Scale Resolution:** .02 lb (10 g)
- **Oil Scale Resolution:** .01 lb (5 g)
- **Working Temperature Range:** 50/120°F (10/49°C)
- **Filter System:** 1 filter for cleaning and water removal
- **Vacuum Pump:** 6 CFM (142Ltr/min)
- **Compressor:** Hermetically sealed, 12cc, high pressure
- **Recovery Speed:** 95% at 70 to 75°F (21 to 24°C) <30 minutes
- **Recovery Cylinder:** 30 lb (12.5Ltr), refillable
- **Charge Accuracy:** ±0.5 oz. at 70 to 75°F (±15 g at 21 to 24°C)
- **Hoses:** 96" (250 cm)
- **Couplers:** R1234yf Manual
- **Thermal Printer:** Standard Equipment
- **Pressure Gauges:** Class 1
- **Cylinder Temperature Sensor:** Integrated
- **Cylinder Heater:** Standard Equipment
- **Shipping Dimensions (mm):** 1188 (h) x 688 (w) x 888 (d)

FEATURES:

8" Colour Command Centre with Touch Screen

Automatic and Manual Procedures

Refrigerant Database

Automatic Vacuum Leak Test: Programmable

Auto Oil Discharge

Auto and Manual Air Purge

Auto Filter and Full Tank Alarm

Low Refrigerant Alarm

Auto Oil Injection

Thermal Printer

Hose Flushing

Vehicle A/C System Flushing

Cylinder Heater

6 CFM Vacuum Pump

Refrigerant Identifier

On-board Instruction Manual

Multiple Languages

On-board Unit Conversion Calculator

New Cabinet Design for Increased Air Flow

Large Analogue Gauges

Hard Wired Power Cord

Hose Coupler Storage

Solid Durable Wheels with Locking Casters

Multi-coloured LED Status Bar

Self-Diagnostic Check

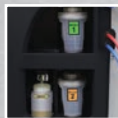
Wi-Fi Capable

*per SAE J2843 all machines used in the United States will be manufactured with one used oil bottle only.

MASTERCool COMMANDER 4000-E-X

251 77 0200

Fully Automatic R1234yf & Hybrid Machine
with Printer



THREE BOTTLES*

Two sealed bellows design bottles for selection of oils or dyes. One used oil bottle.



HOSE FLUSHING

Eliminates the chance of excess (non-insulating) oils being injected into the A/C system. Utilised for service of hybrid vehicles.



THERMAL PRINTER

For a comprehensive, printed report.



STATUS LIGHT

Multi-coloured LED status bar offers visual confirmation of machine progress.

Custom
Design
Dust Cover
Included



R1234yf & HYBRID

» DESIGN CERTIFIED FOR COMPLIANCE WITH SAE J2843 «

SPECIFICATIONS:

- **Type of Refrigerant:** R1234yf
- **Service Procedure:** Fully automatic or manual
- **Voltage:** 110 V / 60 Hz or 220 V / 50/60 Hz
- **Scale Resolution:** .02 lb (10 g)
- **Oil Scale Resolution:** .01 lb (5 g)
- **Working Temperature Range:** 50/120°F (10/49°C)
- **Filter System:** 1 filter for cleaning and water removal
- **Vacuum Pump:** 6 CFM (142Ltr/min)
- **Compressor:** Hermetically sealed, 12cc, high pressure
- **Recovery Speed:** 95% at 70 to 75°F (21 to 24°C) <30 minutes
- **Recovery Cylinder:** 30 lb (12.5Ltr), refillable
- **Charge Accuracy:** ±0.5 oz. at 70 to 75°F (±15 g at 21 to 24°C)
- **Hoses:** 96" (250 cm)
- **Couplers:** R1234yf Manual
- **Thermal Printer:** Standard Equipment
- **Pressure Gauges:** Class 1
- **Cylinder Temperature Sensor:** Integrated
- **Cylinder Heater:** Standard Equipment
- **Shipping Dimensions (mm):** 1188 (h) x 688 (w) x 888 (d)

FEATURES:

8" Colour Command Centre with Touch Screen

Automatic and Manual Procedures

Refrigerant Database

Automatic Vacuum Leak Test: Programmable

Auto Oil Discharge

Auto and Manual Air Purge

Auto Filter and Full Tank Alarm

Low Refrigerant Alarm

Auto Oil Injection

Thermal Printer

Hose Flushing

Vehicle A/C System Flushing

Cylinder Heater

6 CFM Vacuum Pump

Refrigerant Identifier

On-board Instruction Manual

Multiple Languages

On-board Unit Conversion Calculator

New Cabinet Design for Increased Air Flow

Large Analogue Gauges

Hard Wired Power Cord

Hose Coupler Storage

Solid Durable Wheels with Locking Casters

Multi-coloured LED Status Bar

Self-Diagnostic Check

Wi-Fi Capable

*per SAE J2843 all machines used in the United States will be manufactured with one used oil bottle only.

MASTERCool COMMANDER 3000-E

251 77 0190

Fully Automatic R134a & Hybrid Machine
with Printer



HOSE FLUSHING

Eliminates the chance of excess (non-insulating) oils being injected into the A/C system. Utilised for service of hybrid vehicles.



THERMAL PRINTER

For a comprehensive, printed report.



STATUS LIGHT

Multi-coloured LED status bar offers visual confirmation of machine progress.



THREE BOTTLES

Two sealed bellows design bottles for selection of oils or dyes.
One used oil bottle.

Custom
Design
Dust Cover
Included



R134a & HYBRID

>> DESIGN CERTIFIED FOR COMPLIANCE WITH SAE J2788 <<

SPECIFICATIONS:

- **Type of Refrigerant:** R134a
- **Service Procedure:** Fully automatic or manual
- **Voltage:** 110 V / 60 Hz or 220 V / 50/60 Hz
- **Scale Resolution:** .02 lb (10 g)
- **Oil Scale Resolution:** .01 lb (5 g)
- **Working Temperature Range:** 50/120°F (10/49°C)
- **Filter System:** 1 filter for cleaning and water removal
- **Vacuum Pump:** 6 CFM (142 liter/min)
- **Compressor:** Hermetically sealed, 12cc, high pressure
- **Recovery Speed:** 95% at 70 to 75°F (21 to 24°C) <30 minutes
- **Recovery Cylinder:** 30 lb (12.5 litres), refillable
- **Charge Accuracy:** ±0.5 oz. at 70 to 75°F (±15 g at 21 to 24°C)
- **Hoses:** 96" (250 cm)
- **Couplers:** R134a Manual
- **Thermal Printer:** Standard Equipment
- **Pressure Gauges:** Class 1
- **Cylinder Temperature Sensor:** Integrated
- **Cylinder Heater:** Standard Equipment
- **Shipping Dimensions (mm):** 1188 (h) x 688 (w) x 888 (d)

FEATURES:

- 8" Colour Command Centre with Touch Screen
- Automatic and Manual Procedures
- Refrigerant Database
- Automatic Vacuum Leak Test: Programmable
- Auto Oil Discharge
- Auto and Manual Air Purge
- Auto Filter and Full Tank Alarm
- Low Refrigerant Alarm
- Auto Oil Injection (for non-hybrid vehicles only)
- Thermal Printer
- Hose Flushing
- Vehicle A/C System Flushing
- Cylinder Heater
- 6 CFM Vacuum Pump
- On-board Instruction Manual
- Multiple Languages
- On-board Unit Conversion Calculator
- New Cabinet Design for Increased Air Flow
- Large Analogue Gauges
- Hard Wired Power Cord
- Hose Coupler Storage
- Solid Durable Wheels with Locking Casters
- Multi-coloured LED Status Bar
- Self-Diagnostic Check
- Wi-Fi Capable

MASTERCool COMMANDER 2000-E

251 77 0170

Fully Automatic R134a Machine



HOSE FLUSHING

Eliminates the chance of excess (non-insulating) oils being injected into the A/C system. Utilised for service of hybrid vehicles.



THERMAL PRINTER

For a comprehensive, printed report.



STATUS LIGHT

Multi-coloured LED status bar offers visual confirmation of machine progress.



Custom
Design
Dust Cover
Included

45.3" (1150mm)

30.3"
(770mm)

23.6" (600mm)

R134a FULLY AUTOMATIC

>> DESIGN CERTIFIED FOR COMPLIANCE WITH SAE J2788 <<

SPECIFICATIONS:

- **Type of Refrigerant:** R134a
- **Service Procedure:** Fully automatic or manual
- **Voltage:** 110 V / 60 Hz or 220 V / 50/60 Hz
- **Scale Resolution:** .02 lb (10 g)
- **Oil Scale Resolution:** .01 lb (5 g)
- **Working Temperature Range:** 50/120°F (10/49°C)
- **Filter System:** 1 filter for cleaning and water removal
- **Vacuum Pump:** 6 CFM (142 liter/min)
- **Compressor:** Hermetically sealed, 12cc, high pressure
- **Recovery Speed:** 95% at 70 to 75°F (21 to 24°C) <30 minutes
- **Recovery Cylinder:** 30 lb (12.5 litres), refillable
- **Charge Accuracy:** ±0.5 oz. at 70 to 75°F (±15 g at 21 to 24°C)
- **Hoses:** 96" (250 cm)
- **Couplers:** R134a Manual
- **Pressure Gauges:** Class 1
- **Cylinder Temperature Sensor:** Integrated
- **Cylinder Heater:** Standard Equipment
- **Shipping Dimensions (mm):** 1188 (h) x 688 (w) x 888 (d)

FEATURES:

- 8" Colour Command Centre with Touch Screen
- Automatic and Manual Procedures
- Refrigerant Database
- Automatic Vacuum Leak Test: Programmable
- Auto Oil Discharge
- Auto and Manual Air Purge
- Auto Filter and Full Tank Alarm
- Low Refrigerant Alarm
- Auto Oil Injection
- Cylinder Heater
- 6 CFM Vacuum Pump
- On-board Instruction Manual
- Multiple Languages
- On-board Unit Conversion Calculator
- New Cabinet Design for Increased Air Flow
- Large Analog Gauges
- Hard Wired Power Cord
- Hose Coupler Storage
- Solid Durable Wheels with Locking Casters
- Multi-coloured LED Status Bar
- Self-Diagnostic Check
- Wi-Fi Capable