

AD400 Series Benchtop Dispensing Robot

Activators

Anaerobics

Cyanoacrylates

Silicones

Solvents

Primers

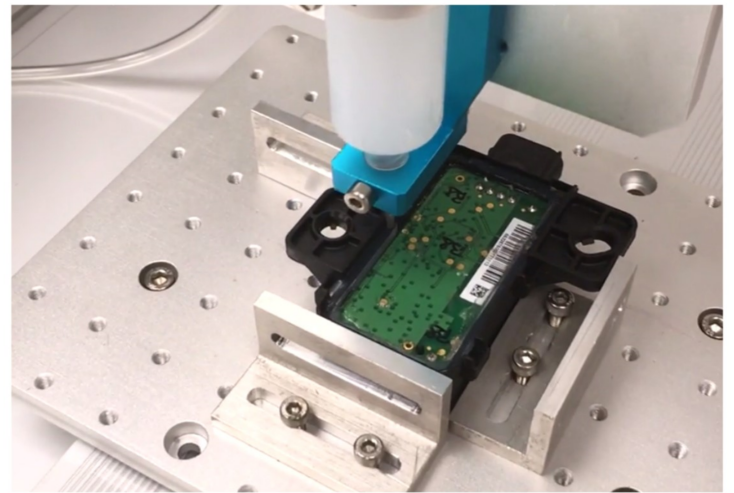
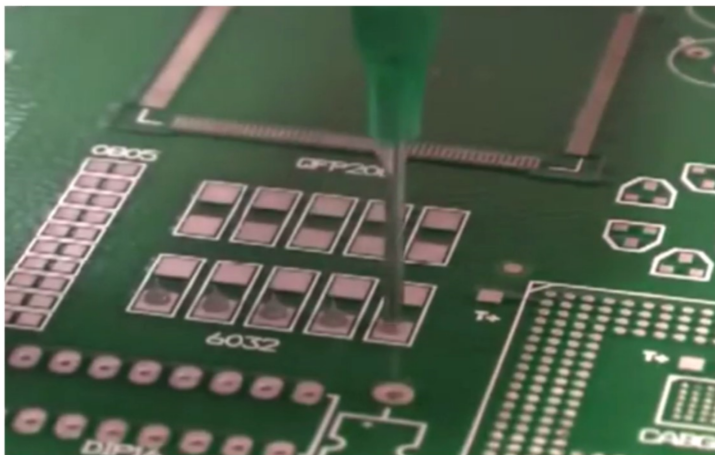
UV-cure



The AD400 series of robots are designed to apply rapid dots, beads, arcs, circle and potting deposits to products placed on the base plate. The overhead gantry indexes into position to make the required deposit without mess, waste or guesswork.

The robots are programmed via the LCD electronic teach pendant and saved to memory. The robust robots will dispense most assembly fluids including epoxies, PU's, glues, CA's, silicones, RTVs, oils, greases, adhesives, inks, gels, primers & activators.

Each robot is supplied with a teach pendant, digital controller dispenser, syringe barrel mount bracket, component kit. Easy to mount optional valves or sealant cartridge retainers.



Even complex program patterns can be developed quickly using the simple point to point teach pendant. Dispense adhesive direct from syringes or optional metering valves and pressure pots. With fast indexing speeds, high accuracy and simple programming; robots are an ideal solution for most dispensing applications in a 400mm x 400mm work area. CE approved. Advanced features include work pattern array copy, end of cycle brush or wipe mode and slope dispensing.

Features

- Dispense liquids and pastes in dots, lines, or arcs
- Repeatability of +/- 0.02 mm
- Powerful on-board 32 bit processor
- Safe operation via area sensor & interlock capability
- Easy to program via teach pendant
- Continuous path motion for perfect dispensing
- Storage of up to 999 programs



Adhesive Dispensing Ltd
Solutions customers stick with...



www.adhesivedispensing.co.uk

sales@adhesivedispensing.co.uk

+44 (0) 1908 686660

AD400 Robot



Adhesive Dispensing Ltd

Solutions customers stick with...



X/Y/Z Work area (mm): 400 / 400 / 100

Worktable load / Tool: 15 kg. / 6 kg.

Max. Speed X&Y / Z: 800 / 350 (mm/sec)

Repeatability: +/- 0.02mm/ Axis

Resolution: 0.001mm/ Axis

Data Memory: 999 Programs

4,000 points / program

Drive Sys. / Stepping motor: 3-phase

Motion Control: PTP & CP

Teaching Method: Teach Pendant

I/O signals: 4 inputs / 4 outputs

External Interface: RS232

Power Supply: AC 110-220V

Dimensions (WxDxH): 600 x 648 x 629

Weight: 45kg

