



2015
LINCOLN NAVIGATOR

Vehicle content

Select
Reserve

		POWER AND HANDLING
S	S	3.5L EcoBoost® V6 twin-turbocharged, direct-injection engine 380 hp @ 5,250 rpm ¹ 460 lb.-ft. of torque @ 2,750 rpm ¹ EPA-estimated fuel economy rating ² Navigator 4x2 16 city/22 hwy/18 combined mpg (28.0-gal. capacity) Navigator L 4x2 15 city/20 hwy/17 combined mpg (33.5-gal. capacity) Navigator 4x4 15 city/20 hwy/17 combined mpg (28.0-gal. capacity) Navigator L 4x4 15 city/19 hwy/16 combined mpg (33.5-gal. capacity)
S	S	6-speed SelectShift® automatic transmission
S	S	3.73 axle ratio
O	O	4.10 axle ratio (standard on Navigator L)
O	O	Control Trac® 4-Wheel-Drive (4WD) System (includes Lincoln Drive Control and Hill Descent Control™)
S	S	Electric power-assisted steering (EPAS)
S	S	Front and rear stabilizer bars
S	S	Hill start assist
S	S	Independent front and rear suspension
A	S	Lincoln Drive Control with continuously controlled damping (CCD)
S	S	Power 4-wheel disc brakes with Anti-Lock Brake System (ABS)
S		Rear load-leveling suspension (RWD only; not available with 22" wheels)
S	S	Rear-wheel drive (RWD)
		EXTERIOR FEATURES
S	S	BLIS® (Blind Spot Information System) with cross-traffic alert
S	S	Body-color lower bodyside cladding with chrome NAVIGATOR lettering
S		Body-color, power-deployable running boards (includes body-color lower bodyside accents)
S	S	Bright exhaust tip
	O	Chrome-accented, power-deployable running boards (includes body-color lower bodyside accents)
S	S	Class III/IV Heavy-Duty Trailer Tow Package with brake module wiring; frame-mounted, heavy-duty 2" hitch receiver with 4-/7-pin wiring connectors; heavy-duty radiator, flasher and transmission cooler; and trailer sway control
S	S	Forward Sensing System
S	S	LED daytime running lamps
S	S	Luggage rack with chrome side rails and black crossbars
S	S	Power-folding, heated sideview mirrors with chrome caps, security approach lamps, integrated turn signals, memory and auto-dimming driver's side
S	S	Power liftgate
S	S	Projector-style high-intensity discharge (HID) headlamps with LED signature lamps, autolamp and rainlamp
S	S	Rear privacy glass
S	S	Rear view camera
S	S	Reverse Sensing System
S	S	Satin-finish grille
S	S	Tow hooks integrated into front fascia
	S	Tuxedo Black Metallic power-deployable running boards (includes Tuxedo Black Metallic lower bodyside accents)
S	S	Windshield wipers: rain-sensing, speed-sensitive intermittent (front); intermittent with washer (rear)
		AUDIO AND NAVIGATION SYSTEMS
S	S	THX® II Certified Audio System with AM/FM stereo/single-CD player, HD Radio™ Technology, MP3 capability and 14 speakers
S	S	SiriusXM® Satellite Radio with 6-month trial subscription
S	S	Voice-activated Navigation System with integrated SiriusXM Traffic and Travel Link® with 6-year subscription



S = Standard O = Optional A = Available

DIMENSIONS

	NAVIGATOR	NAVIGATOR L
Length:	207.4"	222.3"
Height (without options):	78.1" (4x2)	78.0"
	78.0" (4x4)	
Wheelbase:	119.0"	131.0"
Width:		
including mirrors	91.8"	91.8"
mirrors folded	79.7"	79.7"
Head room:		
1st row	39.5"	39.5"
2nd row	39.7"	39.7"
3rd row	37.6"	38.0"
Shoulder room:		
1st row	63.3"	63.3"
2nd row	63.7"	63.7"
3rd row	51.9"	67.1"
Hip room:		
1st row	60.2"	60.2"
2nd row	59.9"	59.9"
3rd row	50.1"	51.8"
Leg room:		
1st row (max.)	43.0"	43.0"
2nd row	39.1"	39.1"
3rd row	37.7"	37.7"
Cargo volume (cu. ft.):		
Behind 1st row	103.3	128.2
Behind 2nd row	54.5	86.3
Behind 3rd row	18.1	42.6
Towing capacity (max. lbs. ³):		
4x2	9,000	8,500
4x4	8,600	8,300

¹Using 93-octane fuel. ²Actual mileage will vary. ³When properly equipped.

Select
Reserve

		DRIVER CONTROLS
S	S	Keyless entry with push-button start (2 key fob transmitters)
S	S	Leather- and wood-trimmed steering wheel with controls for audio, Lincoln SYNC® and cruise control
S	S	Memory settings for driver's seat position, sideview mirrors, power-adjustable pedals and power-tilt/-telescoping steering column
S	S	Message center with compass
S	S	Overhead console with 1st-row map lights, sunglasses storage, power rear quarter window switches and conversation mirror
S	S	Power-adjustable brake and accelerator pedals with memory
S	S	Power rear quarter windows
S	S	Power-tilt/-telescoping steering column with memory
S	S	Power windows with front one-touch-up/-down feature
S	S	Remote Start System
S	S	SYNC with MyLincoln Touch™ voice-activated, in-vehicle connectivity system with Bluetooth® technology, 2 configurable 4.2" color LCD screens in gauge cluster, 8" color LCD touch screen in center stack, SYNC Services for Traffic, Directions and Information, ¹ and media hub with 2 USB ports, SD card reader, and audio input jack
S	S	Universal garage door opener
		INTERIOR FEATURES
S	S	110-volt power outlet
S	S	1st-row center floor console with shifter, armrest, covered storage bin with coinholder, 2 front cupholders, rear audio/climate controls and 2 rear cupholders
S	S	Accessory delay for power features with theater-dimming lighting
O	O	All-weather floor mats in 1st and 2nd rows
S	S	Ambient lighting
S	S	Auto-dimming rearview mirror
S	S	Cargo Management System (Navigator L only)
O	O	Dual headrest DVD by INVISION™ ²
S	S	Dual-zone electronic automatic temperature control with auxiliary climate control with 2 overhead vents for 2nd and 3rd rows, plus controls on the back of the 1st-row center floor console
	S	Leather-trimmed instrument panel, 1st-row center console and door armrests
O	O	Power moonroof (includes mini overhead console)
	S	Premium carpeted floor mats with Lincoln logo
		SEATING
S	S	1st-row heated and cooled, low-back bucket seats with 10-way power adjustments, including power lumbar and recline, 2-way adjustable head restraints, and driver's side memory
S	S	2nd-row heated, low-back, fold-down bucket seats with recline and easy entry to 3rd row
O	O	2nd-row leather-trimmed 40/20/40 split-folding bench seat with fold-flat feature, outboard heat and recline, and center section that slides forward
O	O	2nd-row center floor console with padded armrest, covered storage, and 2 cupholders
S	S	3rd-row PowerFold® 60/40 split bench seat
S	S	Premium leather-trimmed 1st- and 2nd-row seats
	S	Trevino premium leather-trimmed 1st-, 2nd- and 3rd-row seats
		SAFETY AND SECURITY
S	S	3-point safety belt restraints for all seating positions, height-adjustable in 1st row
S	S	AdvanceTrac® with RSC® (Roll Stability Control™)
S	S	Driver and front-passenger dual-stage front airbags, ³ safety belt pretensioners, safety belt energy-management retractors, safety belt usage sensors, driver's seat position sensor, crash severity sensor and restraint control module
S	S	Front-seat side airbags ³
S	S	Illuminated entry with Lincoln Welcome Mat
S	S	LATCH (Lower Anchors and Tether Anchors for Children) in all 2nd-row seating positions; tether anchor only in 3rd-row center
S	S	MyKey®
S	S	Perimeter anti-theft alarm
S	S	Safety Canopy® System with 3-row side-curtain airbags ³ and rollover sensor
S	S	SecuriCode™ keyless entry keypad
S	S	SecuriLock® Passive Anti-Theft System
S	S	SOS Post-Crash Alert System™

S = Standard O = Optional

¹SYNC Services varies by trim level and model year and may require a subscription. Traffic alerts and turn-by-turn directions available in select markets. Message and data rates may apply. Ford Motor Company reserves the right to change or discontinue this product service at any time without prior notification or incurring any future obligation. ²Lincoln Licensed Accessory. ³Always wear your safety belt and secure children in the rear seat.

LINCOLN AUTOMOTIVE FINANCIAL SERVICES

Whether you decide to purchase or lease, you'll find a plan designed to fit your individual needs. Visit LincolnAFS.com or your Lincoln Dealer to explore your financing options.

LINCOLN EXTENDED SERVICE PLAN

For a purchase or lease, Lincoln Extended Service Plan (ESP) gives you peace-of-mind protection designed to cover key vehicle components and protect you from the cost of unexpected repairs. Whether looking for additional mechanical, prepaid maintenance or tire protection plans, Lincoln ESP has you covered. Ask your dealer for Lincoln ESP, the only service contract backed by Lincoln and honored at all Lincoln dealerships in the U.S. and Canada.

Comparisons based on competitive models (class is Luxury Extended Utilities), publicly available information and Ford certification data at time of release. Vehicles may be shown with optional equipment. Features may be offered only in combination with other options or subject to additional ordering requirements/limitations. Dimensions shown may vary due to optional features and/or production variability. Information is provided on an "as is" basis and could include technical, typographical or other errors. Ford makes no warranties, representations, or guarantees of any kind, express or implied, including but not limited to, accuracy, currency, or completeness, the operation of the information, materials, content, availability, and products. Lincoln reserves the right to change product specifications, pricing and equipment at any time without incurring obligations. Your Lincoln Dealer is the best source of the most up-to-date information on Lincoln vehicles.

After trial period expires, SiriusXM Satellite Radio, SiriusXM Traffic and Travel Link subscriptions are sold separately or as a package and are continuous until you call SiriusXM to cancel. See SiriusXM Customer Agreement for complete terms at www.siriusxm.com. SiriusXM Traffic and Travel Link available in select markets. For more information, see www.siriusxm.com/travellink or www.siriusxm.com/traffic. Sirius, XM and all related marks and logos are trademarks of Sirius XM Radio Inc. HD Radio is a proprietary trademark of iBiquity Digital Corp. INVISION is a trademark of VOXX International Corporation. The Bluetooth word mark is a trademark of the Bluetooth SIG, Inc. THULE is a registered trademark of Thule Sweden AB. THX and the THX logo are trademarks of THX Ltd., registered in the U.S. and other jurisdictions. All rights reserved.

©2014 Lincoln 15NAVPDFSPEC





ELECTRONICS

- Dual headrest DVD by INVISION™¹
- Portable DVD rear-seat entertainment systems by NextBase®¹
- Remote Access

EXTERIOR

- Flat splash guards
- Full vehicle covers by Covercraft®¹
- Locking fuel plug
- Racks and carriers by THULE®¹
- Side window deflectors
- Sportz® tent by Napier¹
- Trailer towing accessories
- Wheel lock kit

INTERIOR

- All-weather and carpeted floor mats
- Cargo area protectors
- Cargo Logic® systems
- Interior light kit
- Soft cargo cooler bag
- Soft cargo organizers (large and standard sizes)

Visit accessories.lincoln.com to shop the complete collection.

This is our promise – The Lincoln Pledge.

It's the collective promise of everyone at the Lincoln Motor Company – from our trusted service advisors and expert technicians, to the voice on the other end of the line should you call – that we'll be there for you and your Lincoln wherever, whenever, if ever, you need us.

LINCOLN LIMITED WARRANTIES²

You can rest assured with a 4-year/50,000-mile Bumper-to-Bumper Warranty that covers repair, replacement or adjustment of parts at no additional cost, as well as a 6-year/70,000-mile Powertrain Warranty which features no deductible and is fully transferable.

LINCOLN COMPLIMENTARY MAINTENANCE³

We are pleased to offer complimentary maintenance for 2 years/24,000 miles. At no charge to you, your maintenance visits will include an oil and filter change, and tire rotation scheduled to accommodate your busy life.

LINCOLN ROADSIDE ASSISTANCE FOR LIFE³

Help is only a phone call away should you run out of fuel, lock yourself out of the vehicle, or need towing to the closest Lincoln dealership – or to your preferred Lincoln dealership within 100 miles. For the original owner, the Lincoln Roadside Assistance program provides these services 24/7 for as long as you own the vehicle – at no charge.

COMPLIMENTARY CAR WASH⁴

At the completion of any service on your Lincoln, drive away from the dealership in a clean vehicle that looks just as beautiful as the day you bought it. It's just another shining example of our commitment to you.

COMPLIMENTARY LOANER⁴

Should your Lincoln require warranty service, you can count on us to be there for you with a complimentary loaner vehicle. It's just one more way to let you know that we'll be here for you.

SERVICE PARTS WARRANTY

We'll stand behind our service – and you – with a 2-year, unlimited-mile warranty on both parts and labor.

LINCOLN CLIENT RELATIONSHIP CENTER

When you own a Lincoln, you can take comfort in knowing that we'll be by your side from beginning to end. Our caring agents are empowered to handle your concerns – no matter how big or small they might be.

Lincoln Client Relationship Center
and Roadside Assistance
(800) 521-4140

TDD for the hearing impaired
(800) 232-5952



¹Lincoln Licensed Accessory. ²Lincoln reserves the right to change program details at any time without obligations. See your dealer for limited warranty details. ³Lincoln reserves the right to change program details at any time without obligations. See Service Advisor for complete details. ⁴Availability depends on dealership participation. See dealer for details. Lincoln Original Accessories will be warranted for whichever provides you the greatest benefit: 24 months/unlimited mileage, or the remainder of your Bumper-to-Bumper 4-year/50,000-mile New Vehicle Limited Warranty. Lincoln Licensed Accessories (LLA) are warranted by the accessory manufacturer's warranty. LLA are designed and developed by the accessory manufacturer and have not been designed or tested to Ford Motor Company engineering requirements. Contact your Lincoln Dealer for details and/or a copy of all limited warranties.





Java Metallic



Ingot Silver Metallic



Ebony Leather

Available with all exterior colors



Magnetic Metallic



White Platinum Metallic Tri-coat¹



Medium Light Stone Leather

Available with all exterior colors



Midnight Sapphire Metallic



Bronze Fire Metallic



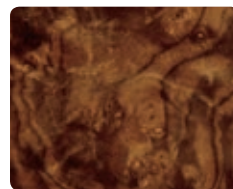
Trevino Premium Dune Leather Not available with Midnight Sapphire Metallic



Tuxedo Black Metallic



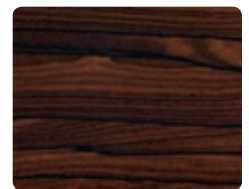
Ruby Red Metallic Tinted Clearcoat¹



Brown Swirl Walnut Wood



Prussian Burl Wood



Ziricote Wood

Select
Reserve

●	Ebony Leather	Brown Swirl Walnut Wood
●	Medium Light Stone Leather	Prussian Burl Wood
●	Trevino Premium Dune Leather	Ziricote Wood



20" Ultra Bright-Machined Aluminum
Standard on Select



20" Dark Finish Aluminum
Optional on Select



22" Polished Aluminum
Standard on Reserve
Optional on Select (includes Lincoln Drive Control)

