

# Summer in Color



Recent Acquisitions in Works on Paper

**Summer in Color** will be on view at Jill Newhouse Gallery  
Monday - Friday 10 - 5

June 20 - 25 Gallery will be open by appointment only

July 1 - 4 Gallery will be closed

Cover: Berthe Morisot, *Village on a River*, c. 1880 (cat. no. 6, detail)

# Summer in Color

*Recent Acquisitions in  
Works on Paper*

June - July 2016

**Jill Newhouse Gallery**

4 East 81st Street, New York, NY 10028

Tel: 212-249-9216

[info@jillnewhouse.com](mailto:info@jillnewhouse.com)

[www.jillnewhouse.com](http://www.jillnewhouse.com)

1

## JOHAN BARTHOLD JONGKIND

Dutch, 1819-1891

*Dordrecht Harbor*, September 3, 1869

Watercolor and graphite on paper

7 x 10 1/4 in. (17.8 x 26 cm)

Signed, dated & located lower left

### **Provenance:**

sale, Paris, Hotel Drouot, April 28, 1899, *Tableau et aquarelles par Jongkind*, comm. priseur Paul Chevalier, expert George Petit no. 43 (330 FF)

sale, Paris, Hotel Drouot, May 3, 1935, comm. priseur M. Henri Baudoin, expert André Schoeller, no. 17

with Galerie Guy Stein, Paris, November 1936

Dr. Victor Simon, Paris, as of 1948

thence by descent to his sister as of 1962

### **Exhibitions:**

Paris, Galerie Guy Stein. *Jongkind*, November 16 - 30, 1936, no. 42

The Hague, Gemeentemuseum de la Haye. *J. B. Jongkind*, July 3 - September 5, 1948, and Stedelijk Amsterdam, October 8 - November 15, 1948, no. 147

Aix-en-Provence, Galerie Lucien Blanc. *Jongkind (1819-1891) - Boudin (1824-1898)*, July 14 - August 14, 1958, no. 14, illustrated

The Comité Jongkind, Paris-La Haye has recorded this watercolor in its archives as G00965.

**Inquire**



Dordt 3 Sept 1869 J. van der Meer

2

**GEORGE SAND**

French, 1804-1876

*Landscape*, 1874

Watercolor on paper

5 x 7 in. (12.7 x 17.8 cm)

Authenticated dated 1874 on verso by Aurore Sand, grand-daughter of the artist.

**Provenance:**

Private collection, France

[Inquire](#)



3

**GEORGE SAND**

French, 1804-1876

*Landscape with River and Mountains*, 1875

Watercolor and gouache on paper

6 1/8 × 9 5/8 inches (15.5 × 24.3 cm)

Authenticated and dated 1875 on verso by Aurore Sand, grand-daughter of the artist.

**Provenance:**

Private collection, France

[Inquire](#)





4

**HENRI JOSEPH HARPIGNIES**

French, 1819-1916

*Tree*, 1876

Watercolor on paper

9 5/8 x 9 3/4 in. (24.4 x 24.8 cm)

Signed lower left

**Provenance:**

Private collection, US

[Inquire](#)



K. Kappeler 1861

5

**HENRI JOSEPH HARPIGNIES**

French, 1819-1916

*A Street in Villefranche*, 1885

Watercolor on paper

10 1/4 x 7 in. (26 x 17.8 cm)

Signed lower left, located and dated lower right

**Provenance:**

Thomas Agnew & Sons

Private collection, UK

**Inquire**



К. С. Погодин 85

Ville Franque

6

**BERTHE MORISOT**

French, 1841-1895

*Village on a River*, c. 1880

Watercolor on paper

5 5/8 x 9 1/2 in. (14.3 x 24.1 cm)

Signed lower left

**Provenance:**

M. de la Patellière, friend of the artist, (according to Wildenstein)

Wildenstein & Company

Jill Newhouse Gallery

Private collection, since 2000.

**Exhibitions:**

New York, Wildenstein. *River Scenes of France: Paintings and Drawings of the 19th and 20th Centuries*, November 10 - December 19, 1998.

**Inquire**



7

**CAMILLE PISSARRO**

French, 1830-1903

*Eragny*, 1890

Watercolor on paper

6½ × 9 5/8 inches (16.5 × 24.5 cm)

Signed, inscribed and dated lower left

**Provenance:**

Estate of the artist, by descent in the family

JPL Fine Arts

Jill Newhouse Gallery

Private collection, US (since 2000)

**Inquire**





Bagnoy 1895 C. Tissot

8

**CLAUDE-ÉMILE SCHUFFENECKER**

French, 1851-1934

*Portrait of the Countess de la Rochefoucauld, c. 1895*

Pastel on paper

13 7/8 x 11 in. (35.2 x 27.9 cm)

Stamped lower right

**Provenance:**

Hirschl & Adler Galleries, Inc., New York (1980)

Private collection, Toronto

**Exhibitions:**

Paris, Galerie de Berri-Raspail. *Émile Schuffenecker: exposition retrospective, peintures et pastels*, March 24 - April 15, 1944, Text by Maximilien de Gauthier, no. 2

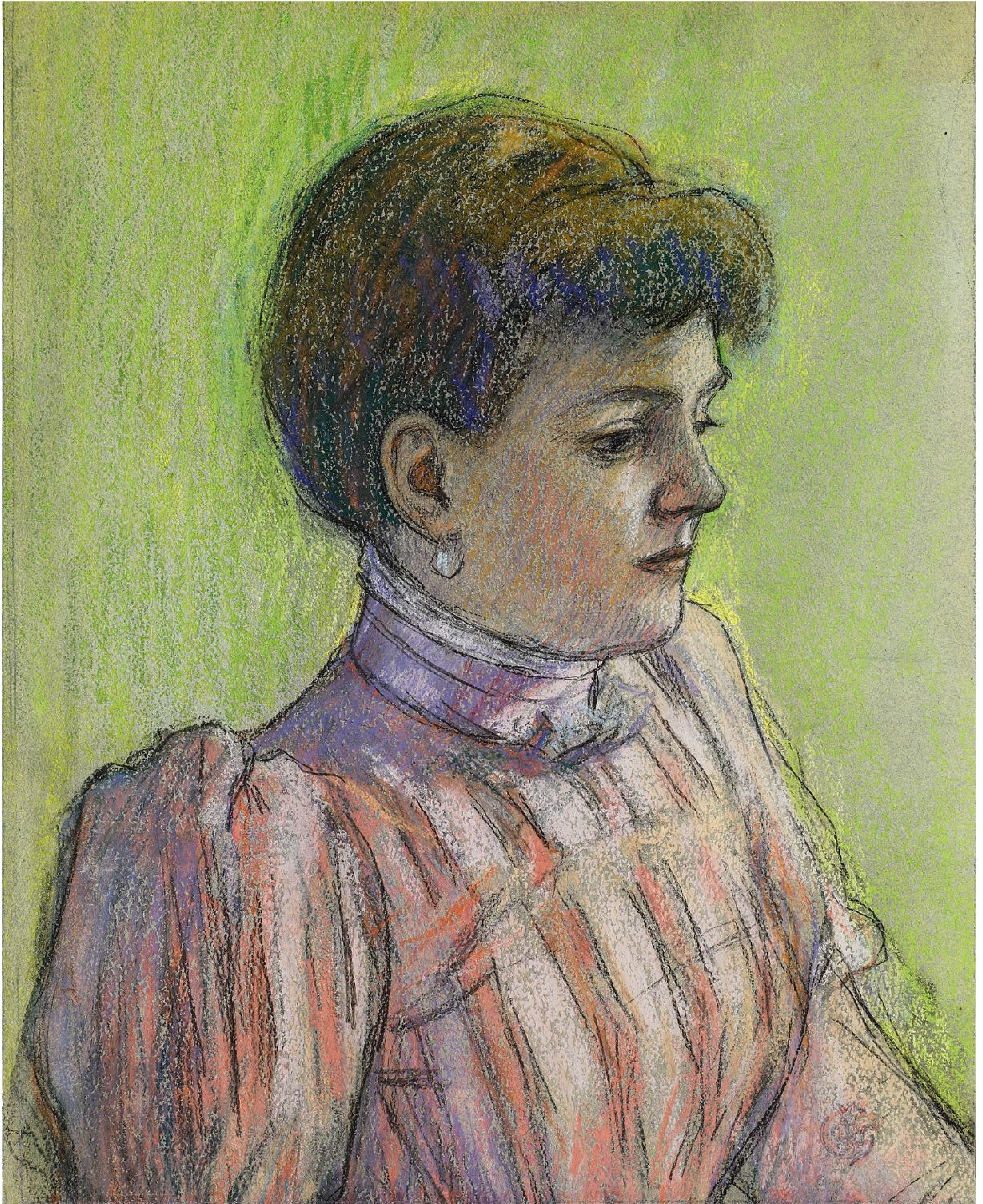
Binghamton, NY, University Art Gallery, SUNY Binghamton. *Claude-Émile Schuffenecker, 1851-1934*, November 22 - December 22, 1980 and New York, Hammer Galleries, January 8 - 24, 1981, fig 1

**Bibliography:**

Grossvogel, Jill-Elyse. *Claude-Émile Schuffenecker: Catalogue Raisonné*. San Francisco: Alan Wofsy Fine Arts, 2000, no. 466, Vol. 1. p. 174, illustrated.

*The Sunday Press*, Binghamton, New York, November 23, 1980, p. C1

**Inquire**



9

**GEORGES LEMMEN**

Belgian, 1865-1916

*The Conversation (Two Women in an Interior)*, c. 1903

Oil on paper, mounted to board  
11 7/8 x 16 1/2 in. (30.2 x 41.9 cm)

**Provenance:**

Pierre Lemmen, Brussels  
thence by descent to Jacqueline Lemen  
Private collection, Belgium (purchased from above)  
sale, Sotheby's, New York, May 14, 1998, lot 414  
Private collection

**Exhibitions:**

Ixelles, Belgium, Musée d'Ixelles. *Georges Lemmen*, 1997, no. 129, p. 154

**Inquire**



10

## EDOUARD VUILLARD

French, 1868-1940

*View from a Theater Balcony (Une galerie au Théâtre du Gymnase)*, 1899

Distemper on paper

9 11/16 x 7 1/2 in. (24.6 x 19.1 cm)

Stamped lower left

### Provenance:

Artist's studio

Private collection

### Exhibitions:

Paris, Huguette Berès. *Vuillard le lithographe*, April 20 - May 15, 1956, no. 78

### Bibliography:

Antoine Salomon & Guy Gogeval. *Vuillard, Catalogue critique des peintures et pastels*. Paris: Skira, 2003, no. III-59, Vol 1, p. 205

This work is a study for lithograph of the same title printed circa 1900.



[Inquire](#)



11

**EDOUARD VUILLARD**

French, 1868-1940

*Lucie Hessel Visiting Cricqueboeuf, 1901*

Pastel and pencil on paper

7 5/8 x 9 5/8 in. (19.5 x 24.5 cm)

Stamped lower right

**Provenance:**

Private collection, France

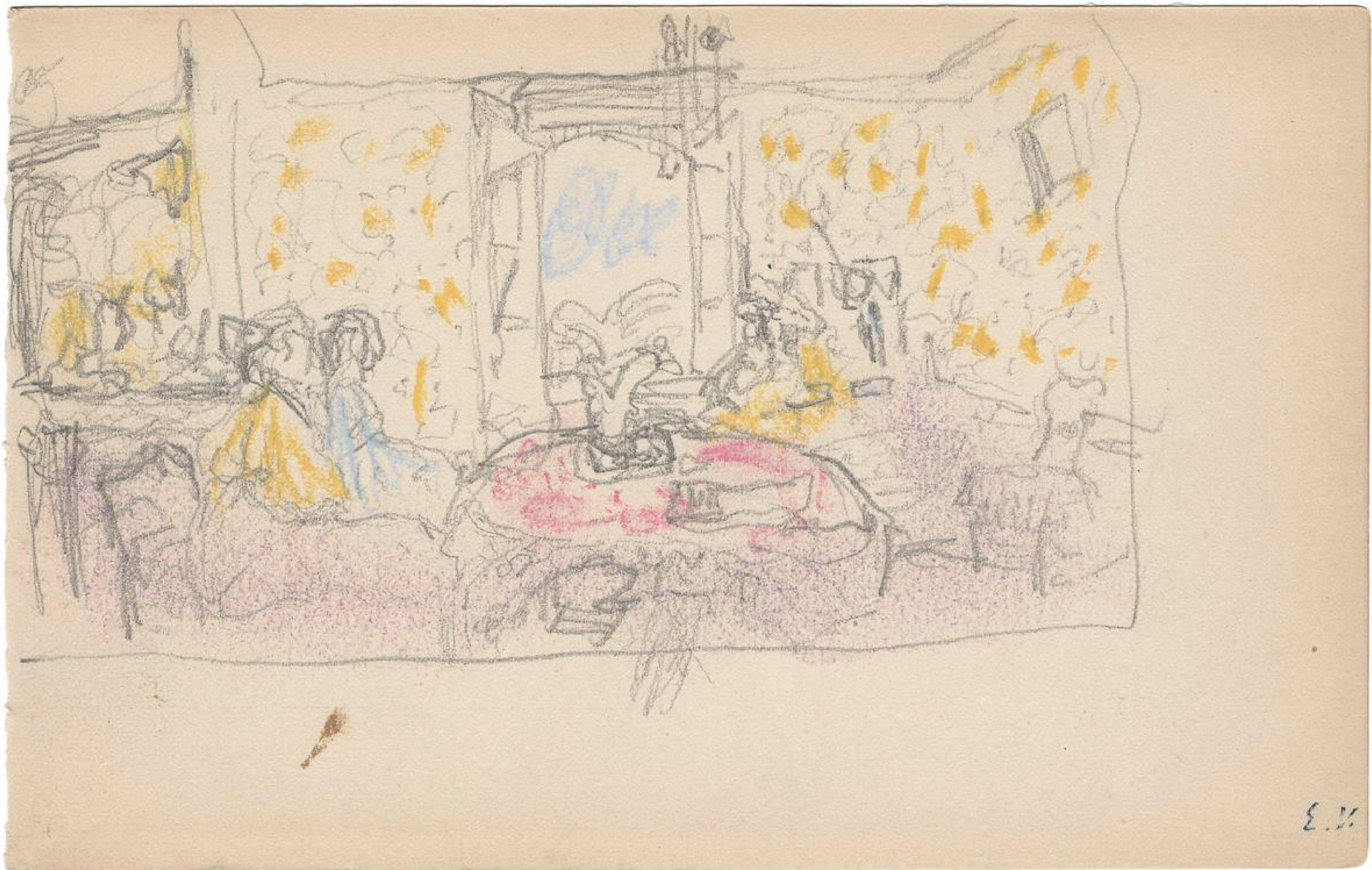
Certificate of authenticity by Le Comité Vuillard dated March 9, 2016.

This work is a study for the painting *Lucy Hessel Visiting Cricqueboeuf, 1901* (VIII-34, Private collection, France).



**Inquire**





12

**EDOUARD VUILLARD**

French, 1868-1940

*Study for "La Matinée Ensoleillée," 1910*

Pastel and pencil on paper

6 1/8 x 4 in. (15.6 x 10.2 cm)

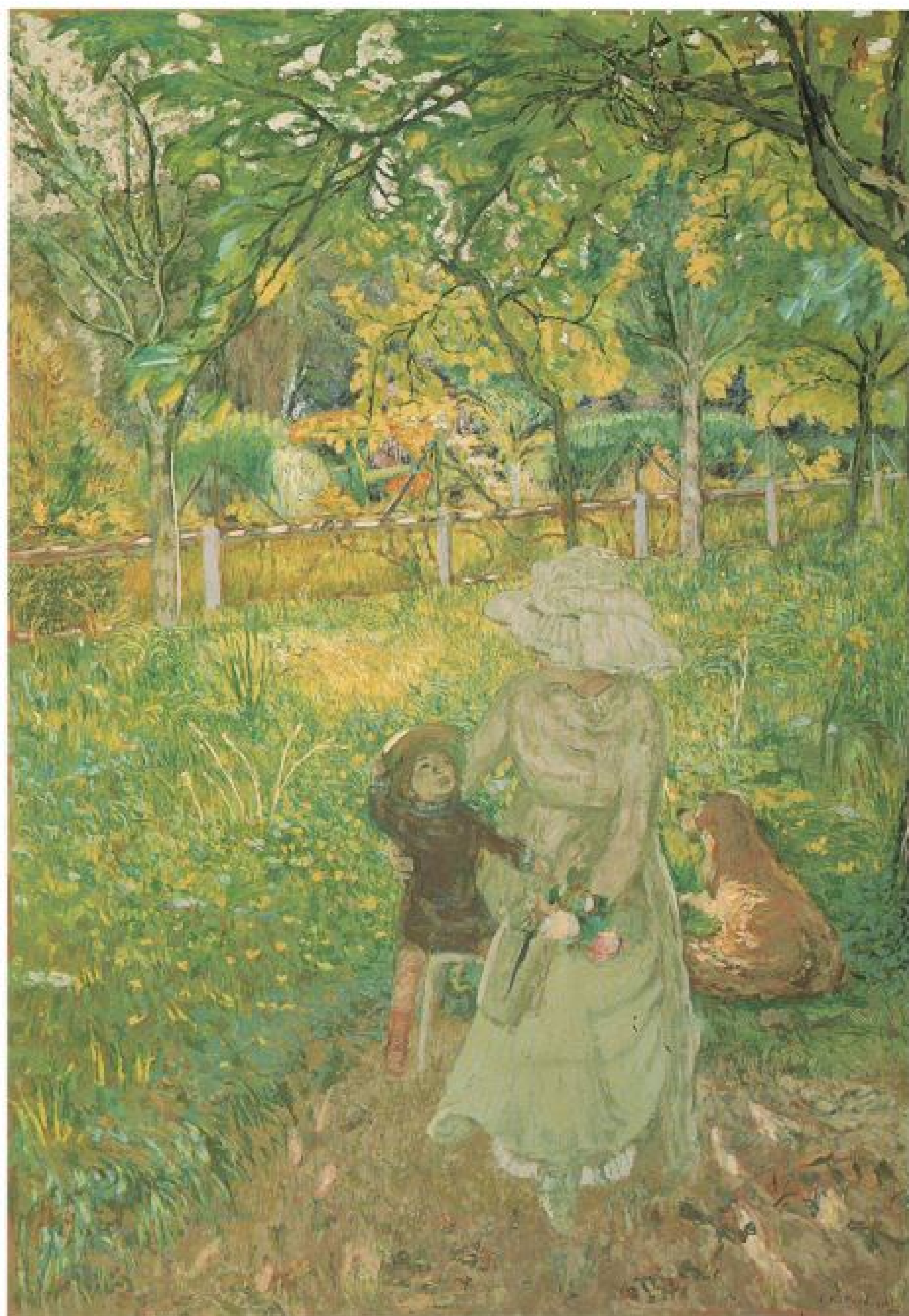
Stamped lower left

**Provenance:**

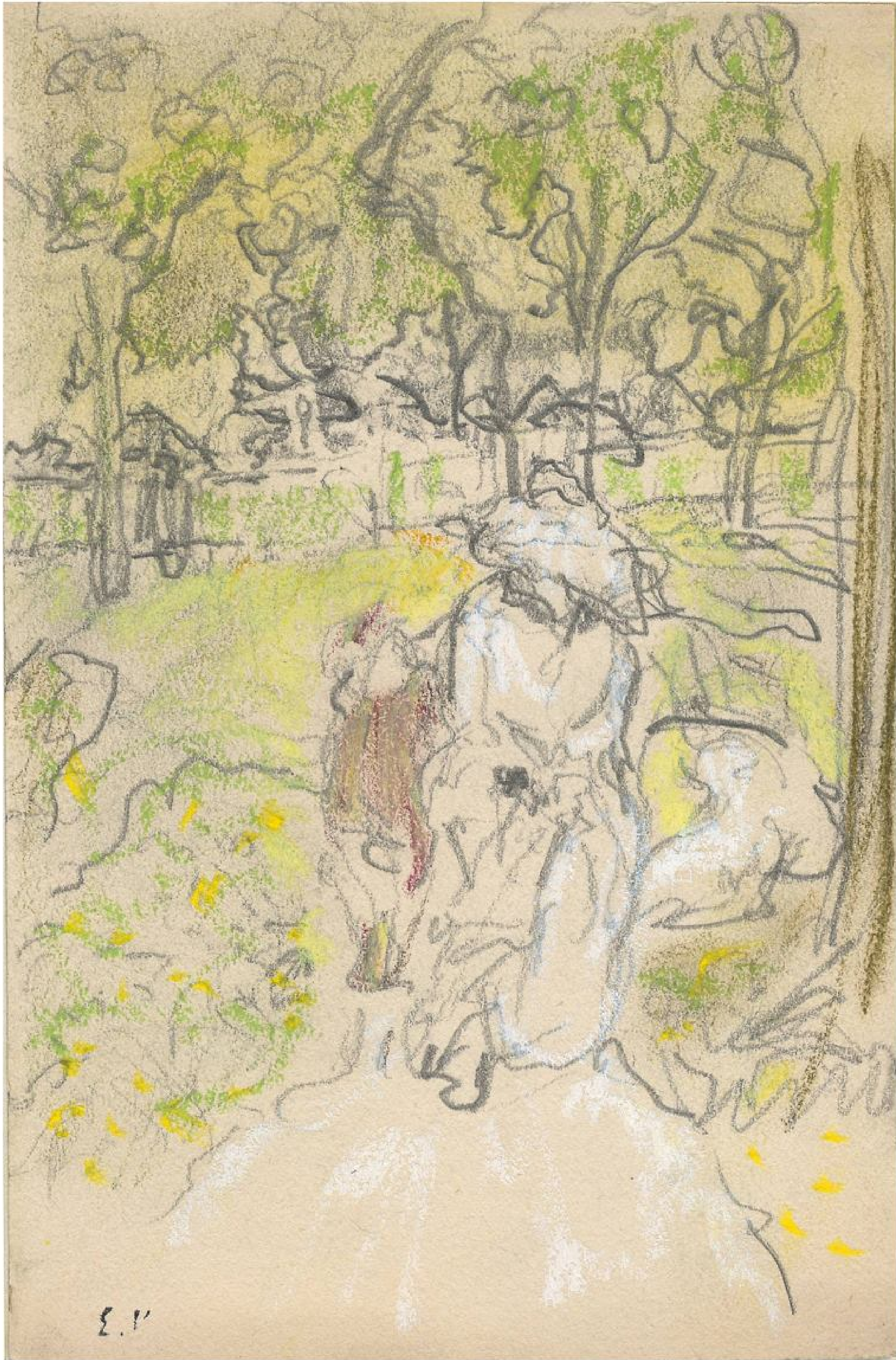
Private collection, France

Certificate of authenticity by Le Comité Vuillard dated March 9, 2016.

This work is a study for the painting *La Matinée Ensoleillée*, 1910 (IX-156, Private collection, London).



**Inquire**



13

13

**EDOUARD VUILLARD**

French, 1868-1940

*Under the Lamp at the Château des Clayes, 1925*

Pastel and pencil on paper

3 7/8 x 6 3/4 in. (10 x 17.2 cm)

Stamped lower right

**Provenance:**

Private collection, France

Certificate of authenticity by Le Comité Vuillard dated March 9, 2016.

**Inquire**



E.V.

14

**EDOUARD VUILLARD**

French, 1868-1940

*Portrait of Thierry Bloch (Study for "Portrait of Mme. Jean Bloch and her Children"), c. 1927*

Pastel on paper

12 3/4 x 9 13/16 in. (32.5 x 25 cm)

Stamped lower left

**Provenance:**

Artist's Studio

M. Payelle, Paris

Renou et Poyet, Paris

E.J. Van Wisselingh, Amsterdam

Harriet Jones & David B. Findlay

Thence by descent to Jones Findlay, Connecticut

Private collection, New York, as of 2003

Certificate of authenticity by Le Comité Vuillard dated February 23, 2015.



**Inquire**



15

**EDOUARD VUILLARD**

French, 1868-1940

*Study for "Intimité, le Grand Salon des Clayes," c. 1935*

Pastel and pencil on paper

4 5/16 x 6 7/8 in. (11 x 17.5 cm)

Stamped lower right

**Provenance:**

Private collection, France

Certificate of authenticity by Le Comité Vuillard dated March 9, 2016.

This drawing is a study for the painting *Intimité, the Large Dining Room at Les Clayes*, c. 1935 (XII-230, Private collection, France).



**Inquire**





16

**ODILON REDON**

French, 1840-1916

*Le Bouddha*, c. 1910

Oil on paper

22 × 18 7/8 inches (55.9 × 47.9 cm)

Signed twice, at lower right and upper left

**Provenance:**

The artist

Marquis de Gonet, in 1908-09

Thence by descent

Sale, Christie's New York, *Impressionist and Modern Paintings, Drawings, and Sculpture, Part I*, November 11, 1997, lot 134

Private collection, Pennsylvania

**Literature:**

Alec Wildenstein. *Odilon Redon: Catalogue Raisonne*. Paris: Widenstein Institute, 1998. no. 2579, as "Personnage Endormi ou Le Bouddha," Vol. IV, p. 248-249, illustrated

**Exhibitions:**

Paris, Galerie Bernheim-Jeune, *Odilon Redon, 1840-1916*, 1963, no. 31 (listed as pastel)

**Inquire**



17

**AUGUSTE HERBIN**

French, 1882-1960

*Lion*, 1947

Gouache on paper

9 3/4 x 11 3/4 in. (24.8 x 29.8 cm)

Signed and dated lower right; titled lower left

**Provenance:**

Galerie Liatowitsch, Basel

Sidney Janis Gallery, New York (1974)

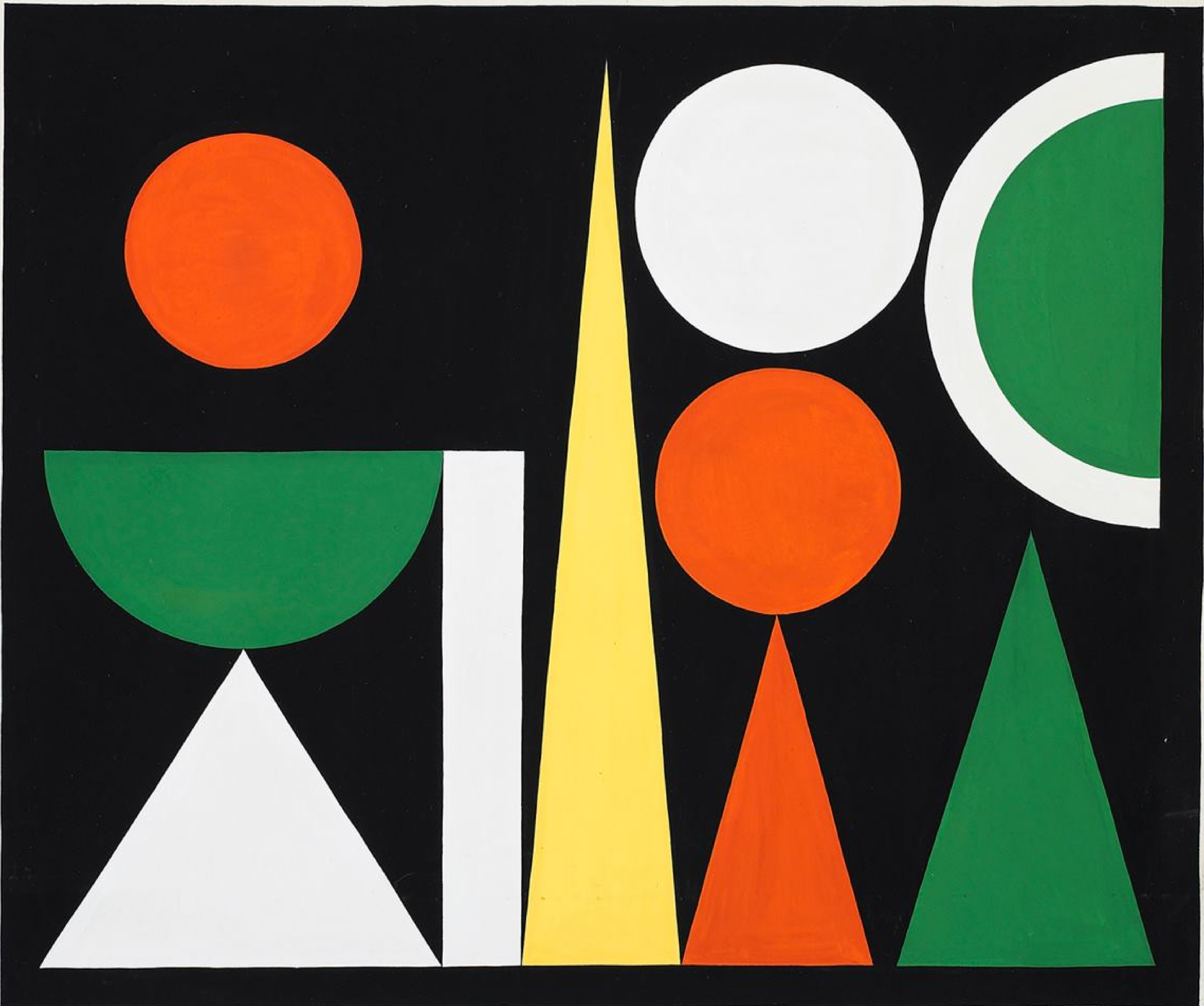
Private collection

**Exhibitions:**

New York, Sidney Janis Gallery. *An Exhibition of Paintings & Gouaches by Herbin*,  
December 4-31, 1974, excat. no. 32

New York, Jill Newhouse Gallery. *Auguste Herbin Geometric Abstraction: Works on Paper  
1938-59*, October 20 - November 20, 2015, excat. no. 6

**Inquire**



"lion"

Healy 1967

18

**AUGUSTE HERBIN**

French, 1882-1960

*Hache*, 1953

Gouache on paper

14 1/2 x 11 in. (36.8 x 27.9 cm)

Signed and dated lower right; titled lower left

**Provenance:**

Galerie Denise René, Paris

Sidney Janis Gallery, New York (1973)

Private collection

**Exhibitions:**

New York, Sidney Janis Gallery. *An Exhibition of Paintings & Gouaches by Herbin*,  
December 4-31, 1974, excat. no. 43

New York, Jill Newhouse Gallery. *Auguste Herbin Geometric Abstraction: Works on Paper  
1938-59*, October 20 - November 20, 2015, excat. no. 10

**Inquire**



'hachi' hachis 1953

19

**GEORGE SEGAL**

American, 1924-2000

*Untitled Series IV #2, 1964*

Pastel on paper

18 × 12 inches (45.7 × 30.5 cm)

Signed and dated lower right

**Provenance:**

Estate of George Segal

**Exhibitions:**

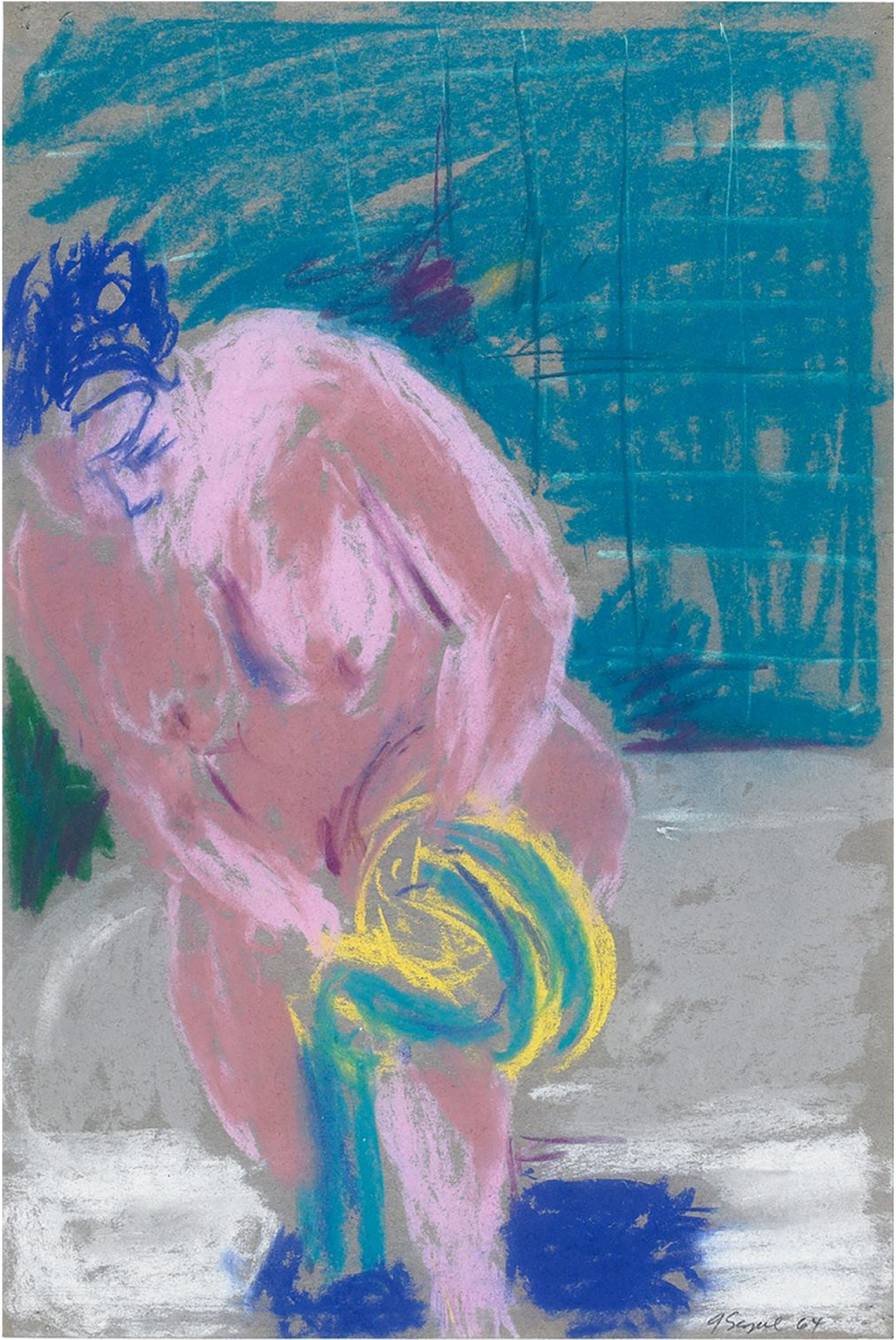
New York, The Graduate Center Art Gallery, CUNY. *George Segal: Works on Paper, 2003*

Long Beach, CA, University Art Museum, California State University. *George Segal: Works on Paper, 2004*

New York, Maxwell Davidson Gallery. *George Segal Women, 2010-11*

**Inquire**





20

**GEORGE SEGAL**

American, 1924-2000

*Paint Cans and Nails*, 1983

Pastel on paper

19½ × 25¼ inches (49.5 × 64.1 cm)

Signed and dated lower right

**Provenance:**

Estate of George Segal

**Exhibitions:**

Hiroshima, Japan, Hiroshima Museum of Art. *George Segal Retrospective: From the Artist's Studio*, April 21 – June 3, 2001, curator Jeffery Wechsler

(traveled to Kagawa, Japan, Marugame-Genichiro-Inokuma Museum of Contemporary Art, June 14 – July 22, 2001

Gifu, Japan, Museum of Fine Arts, August 2 – September 2, 2001

Tokyo, Japan, Bunkamura Museum of Art, September 13 – October 21, 2001

Akita, Japan, Akita Senshu Museum of Art, November 1 – December 4, 2001

Utsunomiya, Japan, Utsunomiya Museum of Art, March 16 – June 2, 2002

St. Petersburg, Russia, The State Hermitage Museum, July 14 – September 15, 2002

New Brunswick, New Jersey, Zimmerli Art Museum, January 17 – May 14, 2003)

New York, The Graduate Center Art Gallery, CUNY. *George Segal: Works on Paper*, 2003, curator Diane Kelder.

**Inquire**



21

**GRAHAM NICKSON**

American/British, b. 1946

*Three Trees Sunset*, 1999

Watercolor on paper

14 x 18 in. (35.6 x 45.7 cm)

**Inquire**



22

**GRAHAM NICKSON**

American/British, b. 1946

*Bather*, 2000

Watercolor on paper

13 1/2 x 19 in. (34.3 x 48.3 cm)

**Inquire**



**23**

**JOHN GIBSON**

American, b. 1958

*Florence, 2010*

Watercolor and woodblock print with mixed media on paper

52 x 53 in. (132.1 x 134.6 cm)

Signed lower right

**Inquire**





#15

John J. ... 10

24

**LILIYA LIFANOVA**

American, b. 1983

*Untitled (rolled filter paper, pink and black ink), 2011*

Filter paper and archival ink on board

5 5/8 x 7 7/8 in. (14.3 x 20 cm)

**Inquire**



25

**GERARD MOSSÉ**

American

*Vellum Painting D3*, 2011-2012

Oil and graphite on vellum mounted on paper

17 × 13 inches (43.2 × 33.0 cm)

Signed and dated lower left

**Inquire**



# Jill Newhouse Gallery

4 East 81st Street New York, NY 10028