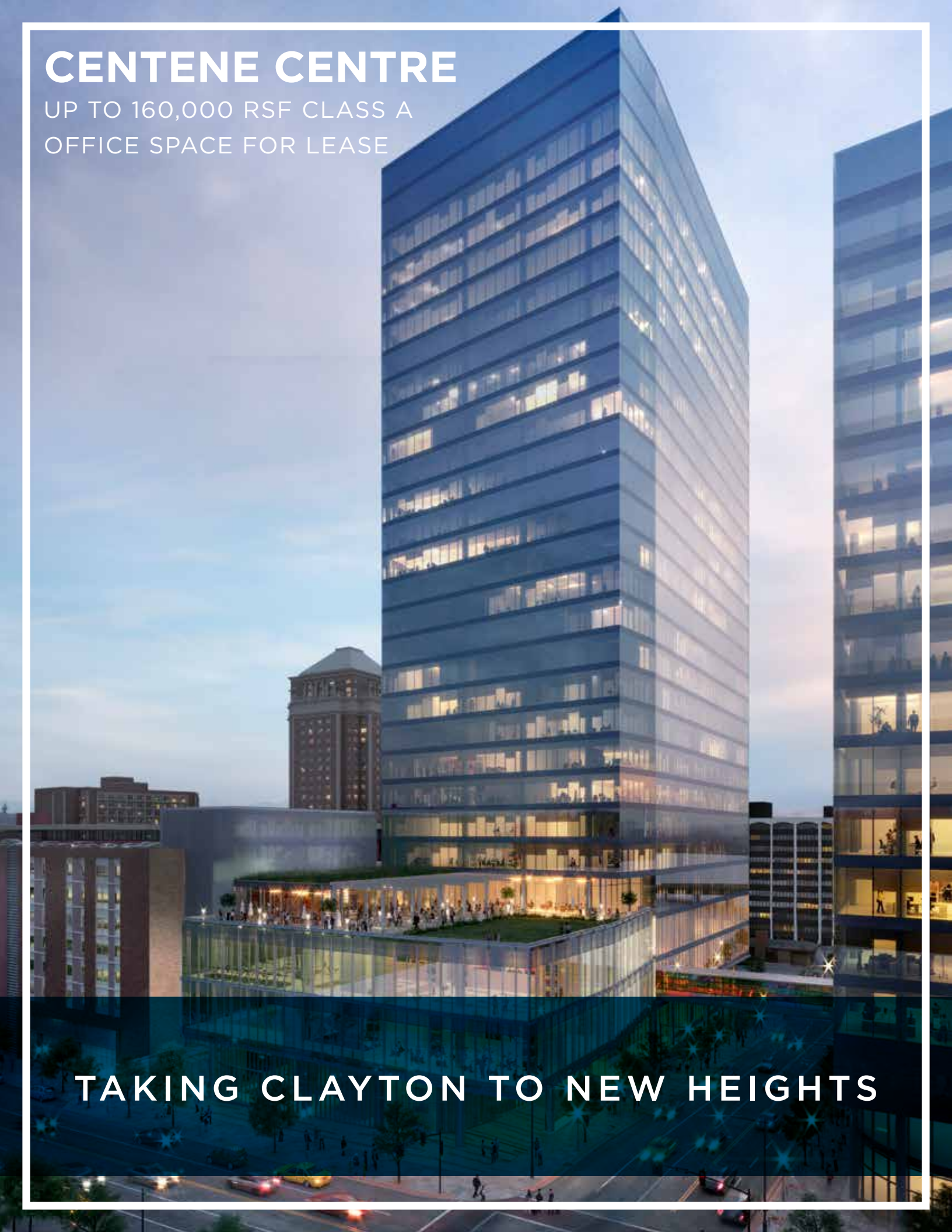


CENTENE CENTRE

UP TO 160,000 RSF CLASS A
OFFICE SPACE FOR LEASE

TAKING CLAYTON TO NEW HEIGHTS





redefining

OFFICE SPACE

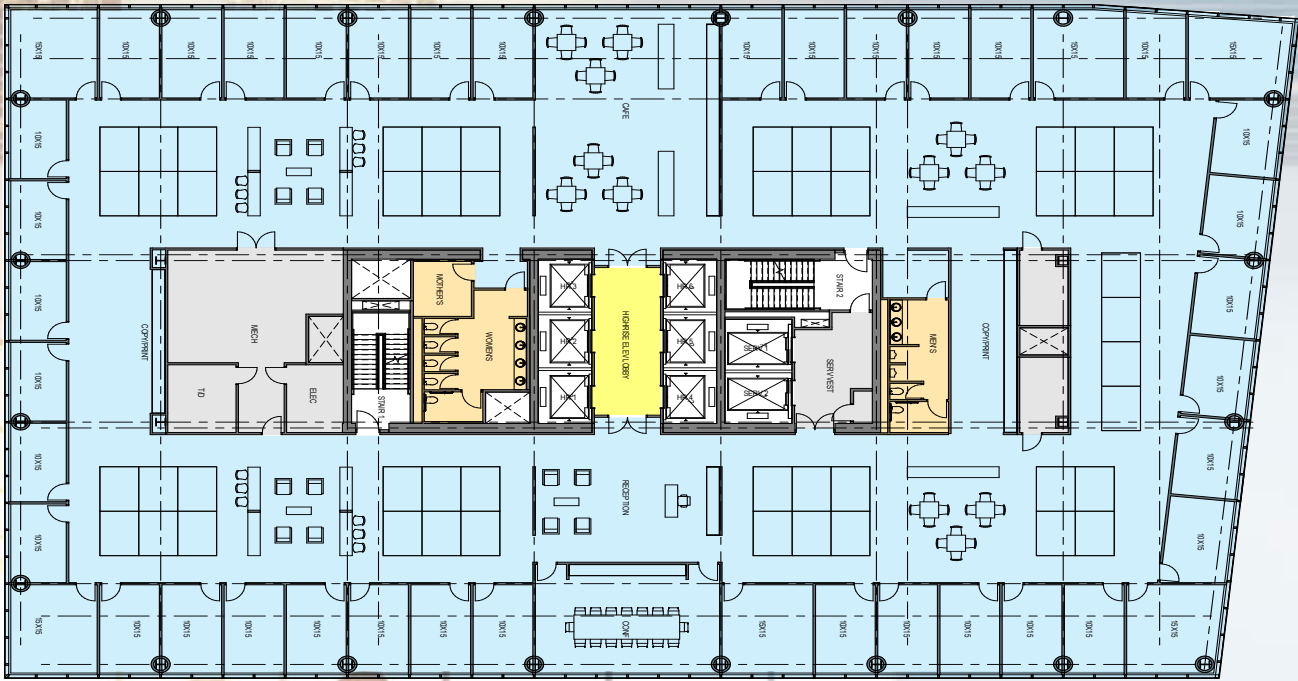


BUILDING AMENITIES

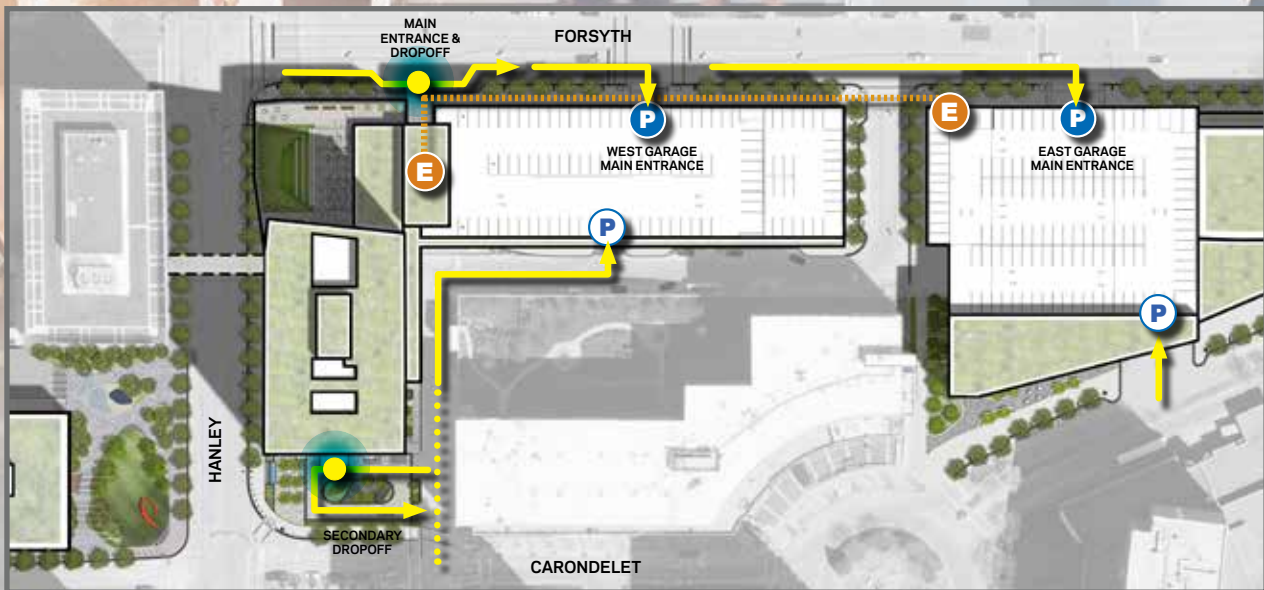
- ▶ 55,000 SF Fully-Equipped Fitness Center (Operated by Wellbridge)
- ▶ 32,000 SF State-of-the-Art Café
- ▶ Full Scale Conference and Training Facilities
- ▶ Outdoor Terrace and Rooftop Dining
- ▶ 1,750 Covered Parking Stalls
- ▶ Professional Concierge Service
- ▶ 24/7/365 Security
- ▶ Carwash Services
- ▶ LEED Gold Status

- 
- ▶ DELIVERY JUNE 2020
 - ▶ FLOORS 22-27 AVAILABLE
 - ▶ 26,232 RSF PER FLOOR

SAMPLE TENANT FLOOR PLAN



BUILDING ACCESS & PARKING



- DROPP-OFF ENTRY INTO BUILDING
- P PARKING GARAGE ENTRY
- E ELEVATORS

An architectural rendering of a modern glass skyscraper. The building is shown from a low angle, looking up. A teal-colored highlight is applied to the upper portion of the building, starting from the top and extending down to approximately the 22nd floor. The numbers 22 through 27 are listed vertically in white text on the left side of this teal section. The building's facade is highly reflective, showing the sky and surrounding environment. To the left, another glass building is partially visible. To the right, a brick building is visible. The sky is blue with scattered white clouds. At the bottom of the image, there is a dark teal banner with white text.

27
26
25
24
23
22

UP TO 160,000
CONTIGUOUS SF

IDEALLY LOCATED IN THE CENTRE OF

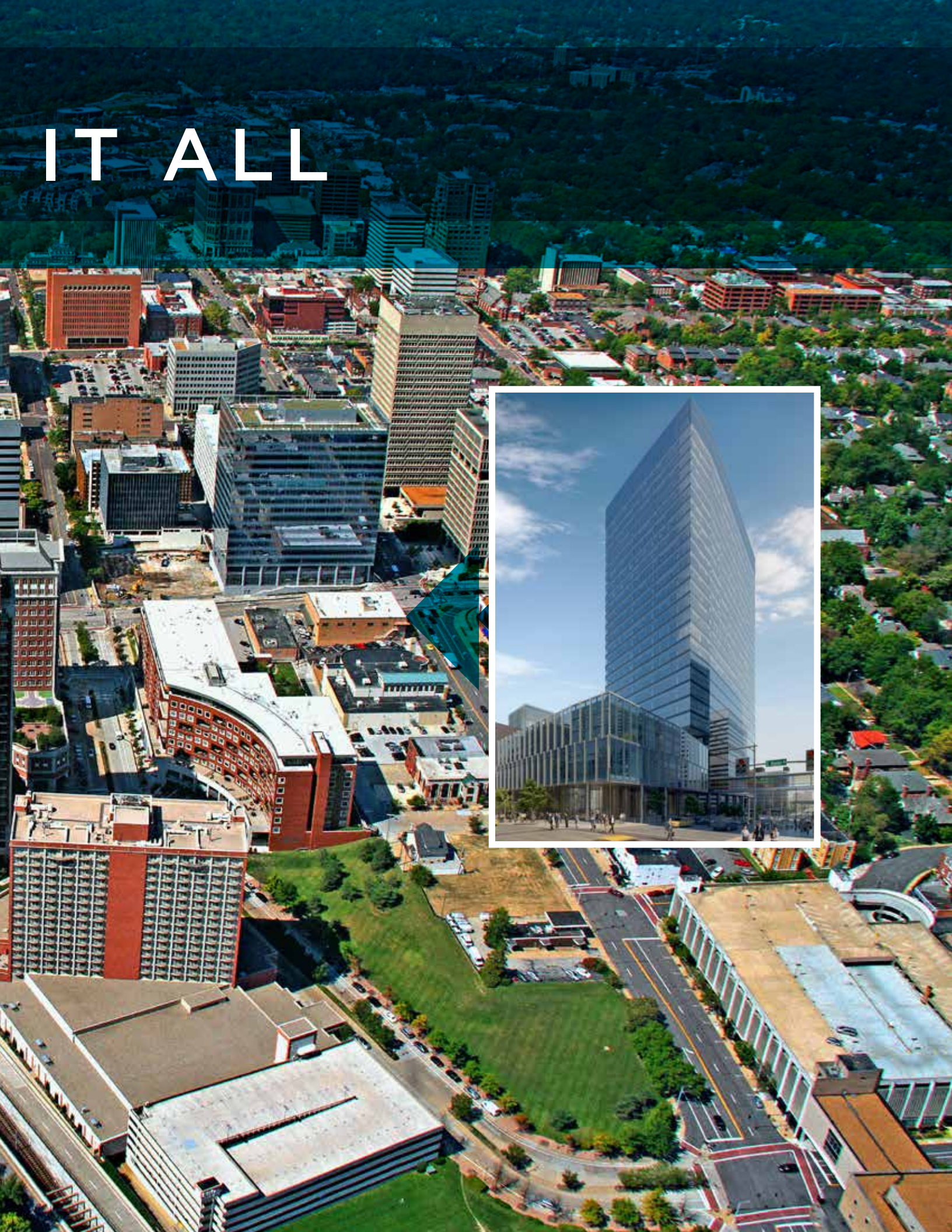
An aerial photograph of St. Louis, Missouri, showing a mix of urban and residential areas. A multi-lane highway runs diagonally through the center, separating a dense residential neighborhood with red-roofed houses on the left from a commercial district with various office buildings on the right. The background shows more greenery and a stadium-like structure.

▶ **URBAN LIVE WORK PLAY ENVIRONMENT**

▶ **ATTRACTIVE, LUXURY RESIDENTIAL MARKET**

▶ **ST. LOUIS' PREMIER OFFICE SUBMARKET**

IT ALL



Jim Mosby
Executive Managing Director
314 746 0316
jim.mosby@cushwake.com

Danielle Grubbs
Associate
314 925 3175
danielle.grubbs@cushwake.com

7700 Forsyth Blvd., Suite 1210
St. Louis, MO 63105
314 862 7100
cushmanwakefield.com

