

**CUSHMAN &
WAKEFIELD**

WENTUM

FLORIDA DIRECTORY

2017

cushmanwakefield.com



CUSHMAN & WAKEFIELD, INC.

REAL ESTATE

INSURANCE

CUSHMAN & WAKEFIELD, INC.
REAL ESTATE AND INSURANCE
30 EAST 42nd ST., N.Y.
PHONE VANDERBILT 3-4200

Bernard Wakefield



J. Clydesdale Cushman

RENTING OFFICE

CUSHMAN & WAKEFIELD, INC.
RENTING OFFICE



155 FIFTH AVENUE
CUSHMAN & WAKEFIELD, INC.



PAN-AMERICAN ISSUE
Manhattan Chronicle
FRIDAY, JANUARY 10, 1930

Cushman & Wakefield
Cushman & Wakefield, Inc. has leased space in 21 West Street to John H. Hunter & Son, Inc. shipping building, to additional space in the same building to...

OFFICES-FLOORS-STORES FOR RENT

WORK'S NEWEST SKYSCRAPER

CUSHMAN & WAKEFIELD, INC.
AGENT



IDEAS INTO ACTION
Cushman & Wakefield



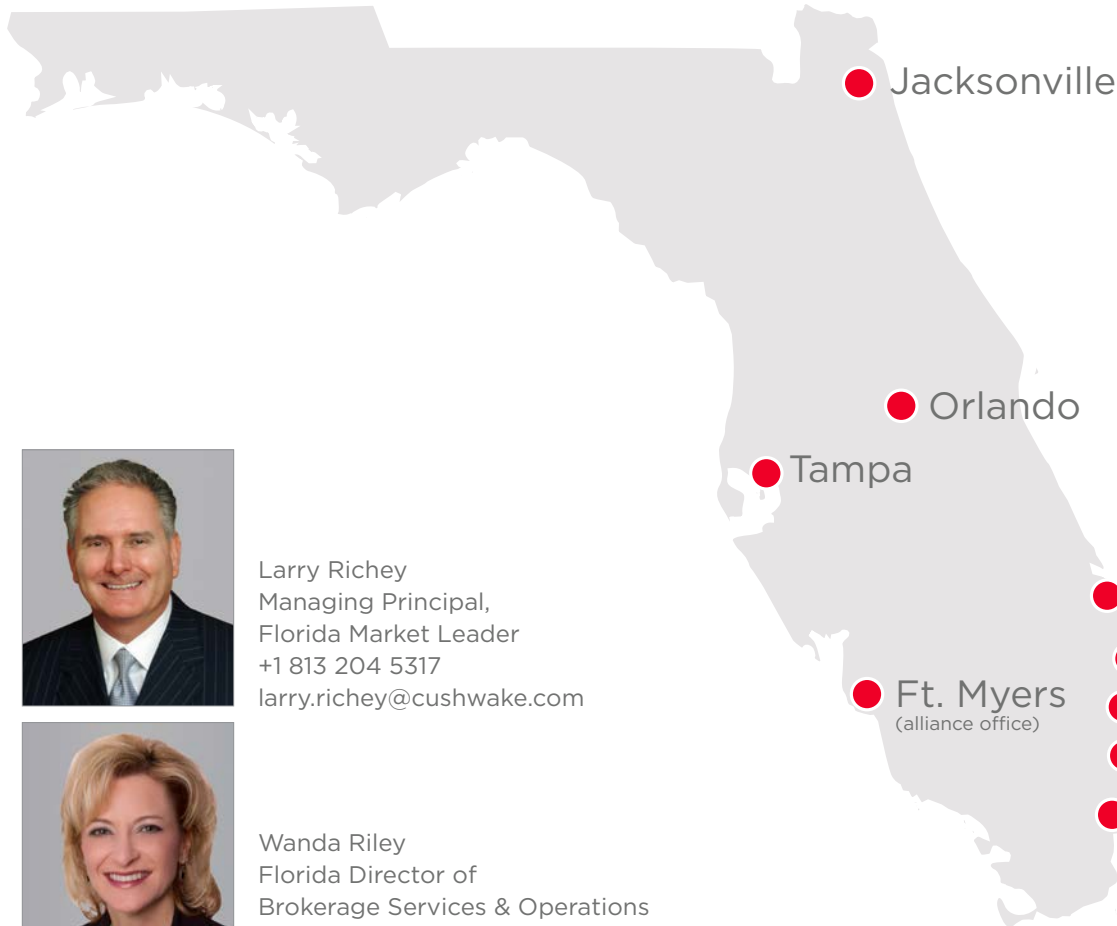
**WE NEGOTIATE.
WE CREATE.
WE REDEFINE.
WE SPEARHEAD.
WE NAVIGATE.
FOR OUR CLIENTS.**

cushmanwakefield.com/action



IDEAS INTO ACTION

FLORIDA LEADERSHIP



Larry Richey
Managing Principal,
Florida Market Leader
+1 813 204 5317
larry.richey@cushwake.com



Wanda Riley
Florida Director of
Brokerage Services & Operations
+1 407 541 4387
wanda.riley@cushwake.com



Hank Brenner
Managing Principal,
Asset Services
+1 813 204 5353
hank.brenner@cushwake.com



Carey Poole
Managing Director,
Project & Development Services
+1 813 424 3214
carey.poole@cushwake.com



Tim Rivers
Senior Managing Director,
Investor Services
+1 813 204 5367
tim.rivers@cushwake.com



Steve Saunders
Executive Managing Director,
Valuation & Advisory
+1 407 541 4384
steve.saunders@cushwake.com



TOTAL OFFICE MARKET SIZE
205,709,108 SF

TOTAL INDUSTRIAL MARKET SIZE
674,232,430 SF

\$117.8MM
2016 REVENUE



47.1MM
SF MANAGED



\$3B
2016 TRANSACTION VALUE



71MM
TRANSACTION SF IN 2016

1,624
TRANSACTIONS IN 2016



8
OFFICES



750+
PEOPLE



156+
BROKERS



statewide overview

2015 | \$80,051,000

2016 | \$117,820,000

47.2% INCREASE YEAR OVER YEAR

congratulations MILESTONE ANNIVERSARIES *with*



from top to bottom left to right
Wayne Ramoski, 20 years
Allen McMurtry, 20 years
Leigh Ivy, 20 years
Larry Richey, 35 years
David Kliewer, 15 years
Mark Pateman, 10 years
David Hawkins, 10 years
Rick Colon, 10 years
Jared Bonshire, 10 years
Bob Blackwood, 10 years

BIG ANNOUNCEMENTS in 2016

Cushman & Wakefield acquired GRV Realty Group, LLC d/b/a *Gibson Realty Group*, a commercial real estate management firm based in Miami. This was a true win-win for both of our firms and brought to Cushman & Wakefield a first-class property management portfolio and a world-class group of professionals. This successful acquisition had an immediate, positive impact on our Florida property management platform and was an example of investment in our goal to be the leading provider in every major market. Cushman & Wakefield is now the #3 ranking property management firm in Florida, with more than 30 million square feet under management.

April 18, 2016

Cushman & Wakefield acquired *Taylor & Mathis of Florida, LLC*, a leading commercial real estate firm specializing in agency leasing and property management. Most notably, the acquisition made Cushman & Wakefield the second-largest property management firm in Florida—an incredible accomplishment. Combined, our Florida portfolio is now 41 msf, employing 270 property management professionals throughout the state. This successful acquisition was a result of the work of Larry Richey who worked with Hank Brenner and Brian Gale from Taylor & Mathis of Florida to close this impactful transaction.

July 12, 2016

A team of *multifamily investment sales leaders led by Robert Given* joined Cushman & Wakefield's South Florida operation from CBRE. In the Southeast, adding the South Florida multifamily group complemented our recent acquisition of Atlanta-based Multi Housing Advisors, which resulted in Cushman & Wakefield becoming the multifamily investment sales leader in the region, with market share greater than 23%. The expansion of our multifamily operations further solidifies our full-service platform in the region and highlights our efforts to build the leading Capital Markets group in Florida, the Americas and around the world.

August 10, 2016

We welcomed *Robert Kaplan, Chris Lentz, and Mark Rutherford*, a team of debt and equity specialists from Ackman-Ziff, to our Capital Markets team in Miami. An industry veteran and Miami native, Robert has closed more than \$9 billion in debt, equity, and sales transactions for land, residential, retail, hotel, office, mixed-use, and industrial properties. Joining Robert are Senior Director Chris Lentz and Analyst Mark Rutherford, with over 30 years of combined experience in corporate and commercial real estate financing and sales.

November 16, 2016

welcome NEW HIRES

“ Recruiting top talent was a priority in 2016 and our Florida team continues to grow stronger. With the addition of these new team members around the state, we are further emphasizing our commitment to building full-service capabilities in all Florida markets to address our clients’ needs every step of the way.

- Larry Richey



Jacksonville
Carling Moore
Kristy Schneider



Orlando
Tammy Ginader
Kevin Hammond
Leah Holmes



Orlando
Larry Kahn
Karen Kurta
Mimoza Novaj



Orlando
Ev Rosales
John Skinner
Susan Tournour



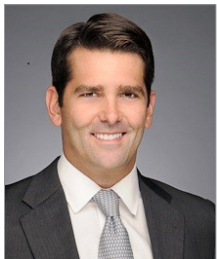
South Florida
Matt Avelar
Troy Ballard
A.J. Belt



South Florida
 Jacqueline Blake
 Steve Bronstein
 Jenny Campos
 Merritt Etner



South Florida
 Robert Given
 David Gray
 Jeff Holding
 Robert Kaplan
 Stephanie Katona



South Florida
 Chase Kulp
 Judy Layton
 Chris Lentz
 Kristen Mackey
 Aaron Mandel



South Florida
 Azam Malik
 Liza Medina
 Shanna Naseery
 James P. Quinn
 Jerry Radtke



South Florida
 Isabella Ramirez
 Elizabeth Rogerio
 Mark Rutherford
 Zachary Sackley
 Dawn Sells



South Florida
 Jose Sime
 Perry Synanidis
 Neal Victor
 Calum Weaver

welcome NEW HIRES



Tampa
Liz Babut
Michelle Barleston
Amy Bishop



Tampa
Natalie Davis
Ray Feeny
Rob Hillpot
Kimberly Howell



Tampa
Candace Jenkins
Ryan Jenkins
Dan Marsella
Michelle McMurray



Tampa
Shannon Nehrig
Katie Stanley
Judy Stenta
Gareth Watson



Larry Richey was inducted into the NAIOP Tampa Bay Hall of Fame!

The honor recognized Larry's significant contributions to commercial real estate in the Tampa Bay region during his 35-year career with Cushman & Wakefield.

Larry's tireless efforts have greatly benefitted Cushman & Wakefield and the local community as a whole. This is a fitting honor for someone who has poured his heart and soul into making this community a better place to work and live.

congratulations

PROMOTIONS & TRANSITIONS



Steve Aiken *Senior Financial Analyst, Florida Multifamily Capital Markets Team (Tampa)*

Marissa Baughn *Analyst, Transaction Management (Tampa)*

Kristin Bodin *Associate, Office Brokerage (Tampa)*

Jessica Mizrahi *Associate, Industrial Brokerage (Tampa)*



Austin Brenner *Associate, Office Brokerage (Tampa)*

Nick Campbell *Florida Sales Support Lead, Marketing (Tampa)*

Paul Carr *Senior Managing Director, Senior Housing (Tampa)*

Tammy Carrion *Office Manager, Orlando and Jacksonville (Orlando)*



Kelly Davidson *Property Manager (Tampa)*

Linda Graham *Property Administrator (Jacksonville)*

Nicole Grzywacz *Florida Marcom Lead, Marketing (Tampa)*

Kathleen Hoyt *Portfolio Manager (Tampa)*



Christina Martinez *Senior Brokerage Coordinator (Orlando)*

Deme Mekras *Alliance Director, iHeartMedia (Tampa)*

Tracy Thom-Palumbo *Project & Development Services, Project Management Director (Orlando)*

Carey Poole *Project & Development Services, Florida Market Lead (Tampa)*



Danielle Peters *Assistant Property Manager (Orlando)*

Stephen Saunders *Florida Valuation & Advisory Market Leader (Orlando)*

Donna Thompson *Property Manager (Tampa)*

Todd Tolbert *Associate Retail Brokerage (Tampa)*



Written by: Michelle McMurray, *Research Analyst (Tampa)* & Kat Krilanovich, *Research Analyst (Orlando)*

New Cushman & Wakefield Blog: MILLENNIALS ON MILLENNIALS... NOT YOUR TYPICAL M.O.M. BLOG

Michelle and Kat had this brain child for a series of blog posts about millennials and have been putting content out every other month on how this much-talked-about population group impacts our workplace.

This is a topic that hasn't seen much buzz internally and Kat and Michelle offer such a unique perspective as millennials themselves, with the blog's goal to be informative, fresh and fun!

Make sure you subscribe via email:

<http://blog.cushwake.com/tampa>

<http://blog.cushwake.com/orlando>

<http://blog.cushwake.com/jacksonville>

<http://blog.cushwake.com/south-florida>

JACKSONVILLE



Tyler Newman Wins NAIOP Jacksonville Industrial Broker of the Year - March 2017

Congratulations to Tyler Newman from our Jacksonville team for winning the NAIOP Jacksonville Industrial Broker of the Year award!

In addition to being named Industrial Broker of the Year, Tyler also won Land Sale of the Year award for his work on the Northside Amazon site with Robert Selton from Colliers International.

Traci Jenks Named Rotary Club of Jacksonville President-Elect Designate - August 2016

Traci will take office in July 2018 and serve throughout the 2018-2019 Rotary year.

She is a six-year Rotary member, current Fellowship Chair and past board member. Traci will be the third woman ever to serve as President in the club's 104-year history.

"This a tremendous honor for me, and I'm grateful for the support of my fellow Rotary members," said Traci. "I'm passionate about Jacksonville and its people, and I look forward to serving them and honoring the great traditions of Rotary."



Jacksonville Colleagues Honored at the CREW IMPACT Awards - October 2016

Tony Terrell was awarded the CREW JAX Rising Star Award for his outstanding contributions to the chapter in his first year of membership.

Julie Holt received the Member-to-Member Business Deal-of-the-Year award for her participation in the development of Palm Bay Club Apartments in Jacksonville, a +/- \$70 million development currently under construction that involved participation by six CREW Jacksonville members (developer, architecture/design, financing, appraisal, title and legal).





David Hillegas Honored as a Jacksonville Business Journal Veteran of Influence - November 2016

David served in the United States Army, 82nd Airborne Division. Each year, the Jacksonville Business Journal picks a select few veterans who have had a major impact on the area after hanging up their uniform. These individuals use the skills they learned during their time of service to make their mark on the Jacksonville community. Honorees were chosen based on their significant impact professionally and personally in the community.



Julie Bohn recognized by the Jacksonville Business Journal as a 40 Under 40 Leader - April 2016

Every year, the Business Journal honors 40 of the city's up-and-coming young professionals who achieved a high level of responsibility in both their careers and in the community.

North Florida JACKSONVILLE



Julie Bohn
Director
+1 904 380 8332
julie.bohn@cushwake.com



David Hillegas
Senior Associate
+1 904 380 8343
david.hillegas@cushwake.com



Julie Holt
Senior Director
+1 904 380 8338
julie.holt@cushwake.com



Jacob Horsley
Director
+1 904 380 8335
jacob.horsley@cushwake.com



Traci Jenks
Senior Director
+1 904 380 8333
traci.jenks@cushwake.com



Karl Johnston
Senior Director
+1 904 380 8334
karl.johnston@cushwake.com



Tyler Newman
Director
+1 904 380 8336
tyler.newman@cushwake.com



Buddy Register
Senior Director
+1 904 380 8341
buddy.register@cushwake.com



Bob Retherford
Senior Director
+1 904 380 8342
bob.retherford@cushwake.com



Katie Scales
Senior Administrative Assistant
+1 904 380 4108
katie.scales@cushwake.com

North Florida

JACKSONVILLE



Kristy Schneider
Receptionist
+1 904 731 9500
kristy.schneider@cushwake.com



Rachal Tarquin
Senior Administrative Assistant
+1 904 380 8344
rachal.tarquin@cushwake.com



Tony Terrell
Associate
+1 904 380 4111
tony.terrell@cushwake.com

ORLANDO





Orlando Open House - November 2016

The Orlando office invited friends, clients and business partners to join them for the official Open House at their NEW downtown office space.

The office hosted more than 100 people and had delicious food, drinks and a photo booth where colleagues and guests alike could take home Cushman & Wakefield-branded photo strips as a keepsake of the event. Guests received red Cushman & Wakefield fleece blankets as their gift...just in time with temperatures dropping.

The Orlando office address is:
20 North Orange Avenue, Suite 300, Orlando, Florida 32801

Central Florida

ORLANDO



Joe Abascal
Senior Associate
+1 407 541 4394
joe.abascal@cushwake.com



Jay Ballard
Senior Director
+1 407 541 4406
jay.ballard@cushwake.com



Jared Bonshire
Director
+1 407 541 4414
jared.bonshire@cushwake.com



Tammy Carrion
Office Manager
+1 407 541 4423
tammy.carrion@cushwake.com



Ken Delvillar
Senior Director
+1 407 541 4441
ken.delvillar@cushwake.com



Kevin Hammond
Associate
+1 407 241 3081
kevin.hammond@cushwake.com



Leah Holmes
Senior Administrative Assistant
+1 407 541 4382
leah.holmes@cushwake.com



Margery Johnson
Senior Director
+1 407 541 4395
margery.johnson@cushwake.com



Austin Johnston
Senior Associate
+1 407 541 4408
austin.johnston@cushwake.com



Larry Kahn
Director
+1 407 541 4388
larry.kahn@cushwake.com



Kathleen Krilanovich
Research Analyst
+1 407 541 4431
kathleen.krilanovich@cushwake.com



Karen Kurta
Senior Marketing Associate
+1 407 541 4401
karen.kurta@cushwake.com

Central Florida

ORLANDO



Iris Lawson
Senior Administrative Assistant
+1 407 541 4399
iris.lawson@cushwake.com



Michael Lerner
Senior Director
+1 407 541 4422
michael.lerner@cushwake.com



Damien Madsen
Managing Director
+1 407 241 3085
damien.madsen@cushwake.com



Matthew McKeever
Senior Director
+1 407 541 4416
matthew.mckeever@cushwake.com



Chris Owen
Florida Research Manager
+1 407 541 4417
chris.owen@cushwake.com



David Perez
Director
+1 407 541 4435
david.perez@cushwake.com



Tommy Pinel
Senior Associate
+1 407 241 3084
tommy.pinel@cushwake.com



Bayne Porter
Executive Director
+1 404 853 5323
bayne.porter@cushwake.com



Ev Rosales
Receptionist
+1 407 541 4402
ev.rosales@cushwake.com



Kerri Silva
Brokerage Coordinator
+1 407 541 4403
kerri.silva@cushwake.com



John Skinner
Associate
+1 407 541 4436
john.skinner@cushwake.com



Andrew Slowik
Senior Associate
+1 407 541 4428
andrew.slowik@cushwake.com

Central Florida

ORLANDO



Richard Solik
Senior Director
+1 407 541 4389
richard.solik@cushwake.com



Anne Spencer
Director
+1 407 541 4434
anne.spencer@cushwake.com



Mark Stratman
Senior Director
+1 407 541 4440
mark.stratman@cushwake.com



Jeff Sweeney
Senior Director
+1 407 541 4429
jeff.sweeney@cushwake.com



Linda Tomlinson
Senior Administrative Assistant
+1 407 541 4396
linda.tomlinson@cushwake.com



Susan Tournour
Marketing Specialist
+1 407 241 3079
susan.tournour@cushwake.com



Nell Vitril
Brokerage Coordinator
+1 407 541 4410
nell.vitril@cushwake.com



ICSC - Orlando

Central Florida

ORLANDO



Open House

TAMPA





Tampa Open House - February 1, 2017

The Tampa team hosted friends, clients and business partners on Wednesday, February 1 to officially unveil their new office space. With more than 50 Legacy DTZ employees moving into the Legacy Cushman & Wakefield space, Tampa had the most robust office combination, with consolidation on the 33rd floor and an expansion for more employee space on the 34th floor.

The office hosted close to 200 guests and featured delicious food, drinks and a photo booth where colleagues and guests alike could take home Cushman & Wakefield-branded photo strips as a keepsake of the event.

The Tampa office address is:
One Tampa City Center, Suite 3300, Tampa, Florida 33602

Central Florida

TAMPA



Omar Acosta
Senior Accountant
+1 813 349 8406
omar.acosta@cushwake.com



Steve Aiken
Financial Analyst
+1 813 204 5333
steve.aiken@cushwake.com



Mercedes Angell
Senior Director
+1 813 204 5344
mercedes.angell@cushwake.com



Michelle Barleston
Brokerage Coordinator
+1 813 424 3215
michelle.barleston@cushwake.com



LaShawn Bates
Financial Analysis Manager
+1 813 204 5322
lashawn.bates@cushwake.com



Marissa Baughn
Analyst, Transaction Management
+1 813 498 6823
marissa.baughn@cushwake.com



Alex Beacham
Director
+1 813 241 3833
alex.beacham@cushwake.com



Joe Beaudoin
Director
+1 813 204 5319
joe.beaudoin@cushwake.com



Patrick Berman
Senior Director
+1 813 204 5363
patrick.berman@cushwake.com



Amy Bishop
Brokerage Coordinator
+1 813 204 5378
amy.bishop@cushwake.com



Kristin Bodin
Associate
+1 813 498 6824
kristin.bodin@cushwake.com



Mary Anne Boyd
Director,
Portfolio Lease Administration
+1 813 349 8542
maryanne.boyd@cushwake.com

Central Florida

TAMPA



Todd Brandon
Executive Managing Director
+1 813 241 3838
todd.brandon@cushwake.com



Brian Breeding
Senior Associate
+1 813 204 5369
brian.breeding@cushwake.com



Shannon Breher
Marketing Associate
+1 813 204 5339
shannon.breher@cushwake.com



Austin Brenner
Associate
+1 813 204 5356
austin.brenner@cushwake.com



Rick Brugge
Senior Director
+1 813 204 5365
rick.brugge@cushwake.com



Paula Buffa
Senior Director
+1 813 204 5348
paula.buffa@cushwake.com



Locke Burnette
Senior Manager,
Transaction Management
+1 813 498 6834
locke.burnette@cushwake.com



Nick Campbell
Marketing Manager, Florida Sales
Support Lead
+1 813 204 5330
nick.campbell@cushwake.com



Paul Carr
Senior Director
+1 813 498 6835
paul.carr@cushwake.com



Caitlin Chandler
Transaction Manager
+1 813 349 8533
caitlin.chandler@cushwake.com



Rick Colon
Senior Financial Analyst
+1 813 349 8551
rick.colon@cushwake.com



Lauren Coup
Director
+1 813 204 5342
lauren.coup@cushwake.com

Central Florida

TAMPA



Mike Davis
Executive Managing Director
+1 813 204 5331
mike.davis@cushwake.com



Melissa DePalma
Compliance Director
+1 813 204 5315
melissa.depalma@cushwake.com



Philip Dinkins
Director
+1 813 221 7188
philip.dinkins@cushwake.com



Wendy Dobreff
Account/Transaction Manager
+1 813 241 3835
wendy.dobreff@cushwake.com



Jason Donald
Senior Director
+1 813 204 5329
jason.donald@cushwake.com



Liz Donald
Senior Brokerage Coordinator
+1 813 204 5324
liz.donald@cushwake.com



Amy Duffy
Senior Manager,
Transaction Management
+1 813 349 8539
amy.duffy@cushwake.com



Kim Duncan
Manager,
Portfolio Lease Administration
+1 813 348 8242
kim.duncan@cushwake.com



Bruce Erhardt
Executive Director
+1 813 204 5312
bruce.erhardt@cushwake.com



Steve Ernst
Senior Director
+1 813 349 8378
steve.ernst@cushwake.com



Ray Feeney
Site Services Technician
+1 813 204 5364
raymond.feeney@cushwake.com



Tracie Ferguson
Executive Administrator
+1 813 349 8550
tracie.ferguson@cushwake.com

Central Florida

TAMPA



Megan Fetter
Senior Managing Director
+1 813 349 8344
megan.fetter@cushwake.com



John Fish
Senior Director
+1 813 204 5304
john.fish@cushwake.com



Marcianne Foster
Brokerage Coordinator
+1 813 204 5345
marcianne.foster@cushwake.com



Ryan Freking
Transaction Manager
+1 813 498 6830
ryan.freking@cushwake.com



Scott Garlick
Managing Principal, Tampa Bay
+1 813 204 5310
scott.garlick@cushwake.com



Jimmy Garvey
Executive Director
+1 813 349 8371
james.garvey@cushwake.com



Joe Garvey
Senior Director
+1 813 349 8386
joe.garvey@cushwake.com



Wendy Giffin
Director
+1 813 204 5346
wendy.giffin@cushwake.com



Rick Giunta
Managing Director,
Workplace Strategy
+1 813 421 6972
rick.giunta@cushwake.com



Grant Goodwiller
Director
+1 813 241 3845
grant.goodwiller@cushwake.com



Elize Greenoe
Operations Director
+1 813 204 5313
elize.greenoe@cushwake.com



Nicole Grzywacz
Marketing Manager,
Florida Marcom Lead
+1 813 349 8545
nicole.grzywacz@cushwake.com

Central Florida

TAMPA



Barry Hanerfeld
Senior Director
+1 813 349 8354
barry.hanerfeld@cushwake.com



Mark Hardee
Financial Analyst
+1 813 204 5355
mark.hardee@cushwake.com



David Harris
Senior Director
+1 813 349 8381
david.harris@cushwake.com



David Hawkins
Senior Director
+1 860 633 6552
david.hawkins@cushwake.com



Chris Heller
Director
+1 813 349 8357
chris.heller@cushwake.com



Kimberly Howell
Executive Administrator
+1 813 498 6821
kimberly.howell@cushwake.com



Jeannette Jason
Director
+1 813 204 5320
jeannette.jason@cushwake.com



Candace Jenkins
Senior Administrator
+1 813 349 8376
candace.jenkins@cushwake.com



Ryan Jenkins
Financial Analyst
+1 813 424 3204
ryan.jenkins@cushwake.com



Tina Kelso
Portfolio Lease Analyst
+1 813
tina.kelso@cushwake.com



John Klein
Financial Analyst
+1 813 546 2410
john.klein@cushwake.com



David Kliewer
Senior Director
+1 813 349 8368
david.kliewer@cushwake.com

Central Florida

TAMPA



Lisa Landry
Senior Portfolio Lease Analyst
+1 813
lisa.landry@cushwake.com



Bruce Lauer
Vice Chairman
+1 813 288 0088
bruce.lauer@cushwake.com



Jane Levin
Senior Director
+1 813 204 5351
jane.levin@cushwake.com



Dan Marsella
Financial Analyst
+1 860 881 0100
daniel.marsella@cushwake.com



Christina Martinez
Senior Brokerage Coordinator
+1 407 541 4409
christina.martinez@cushwake.com



Andy May
Executive Director
+1 813 204 5305
andy.may@cushwake.com



Kevin McCarron
Director
+1 813 349 8356
kevin.mccarron@cushwake.com



Heather McFee
Receptionist
+1 813 223-6300
heather.mcfee@cushwake.com



Michelle McMurray
Research Analyst
+1 813 204 5300
michelle.mcmurray@cushwake.com



Allen McMurtry
Executive Managing Director
+1 813 349 8349
allen.mcmurtry@cushwake.com



Deme Mekras
Alliance Director
+1 813 498 6833
deme.mekras@cushwake.com



Tessa Mellinger
Senior Financial Analyst
+1 813 424 3203
tessa.tribushnaya@cushwake.com

Central Florida

TAMPA



Jessica Mizrahi
Associate
+1 813 204 5323
jessica.bradley@cushwake.com



Byron Moger
Executive Director
+1 813 204 5316
byron.moger@cushwake.com



Jacqueline Monahan
Manager,
Portfolio Lease Administration
+1 813 349 8348
jacqueline.monahan@cushwake.com



Shannon Nehrig
Brokerage Coordinator
+1 813 204 5327
shannon.nehrig@cushwake.com



Sheila Noblin
Executive Assistant
+1 813 204 5343
sheila.noblin@cushwake.com



Barry Oaks
Senior Director
+1 813 204 5307
barry.oaks@cushwake.com



Angela Odell
Managing Director of Leasing
+1 813 514 5435
angela.odell@cushwake.com



Caroline Palmer
Transaction Manager
+1 813 349 8377
caroline.palmer@cushwake.com



Michael Park
Senior Associate
+1 813 204 5340
michael.park@cushwake.com



Janice Poole
Portfolio Lease Coordinator
+1 813 288 0088
janice.poole@cushwake.com



Elizabeth Ratliff
Senior Portfolio Lease Analyst
+1 813 349 8535
elizabeth.ratliff@cushwake.com



Ryan Rawls
Managing Director,
National Financial Consulting Group
+1 813 424 3219
ryan.rawls@cushwake.com

Central Florida

TAMPA



Jamie Reed
Administrator
+1 813 421 6973
jamie.reed@cushwake.com



Jennifer Regan
Brokerage Coordinator
+1 813 204 5325
jennifer.regan@cushwake.com



Julia Rettig
Director
+1 813 204 5332
julia.rettig@cushwake.com



Ryan Reynolds
Director
+1 813 349 8410
ryan.reynolds@cushwake.com



Kimberly Rodgers
Senior Portfolio Lease Analyst
+1 813 349 8385
kimberly.rodgers@cushwake.com



Doug Rothschild
Executive Managing Director
+1 813 349 8365
doug.rothschild@cushwake.com



Ron Ruffner
Director
+1 813 498 6826
ron.ruffner@cushwake.com



Chris Sands
Financial Analyst
+1 813 349 8369
christopher.sands@cushwake.com



Gene Selg
Senior Accountant
+1 813 223 6300
gene.selg@cushwake.com



Lara Sieder
Senior Director
+1 813 281 1110
lara.sieder@cushwake.com



Lynda Smith
Senior Administrator
+1 813 349 8358
lynda.smith@cushwake.com



Clay Sovich
Director
+1 813 498 6827
clayton.sovich@cushwake.com

Central Florida

TAMPA



Katie Stanley
Brokerage Coordinator
+1 813 204 5341
katie.stanley@cushwake.com



Judy Stenta
Senior Portfolio Lease Analyst
+1 813 498 6825
judith.stenta@cushwake.com



Nina Sullivan
Director
+1 813 204 5352
nina.sullivan@cushwake.com



Joseph Taggart
Senior Director
+1 813 349 8380
joseph.taggart@cushwake.com



Josh Tarkow
Director
+1 813 349 8549
josh.tarkow@cushwake.com



KC Tenukas
Senior Director
+1 813 349 8347
kc.tenukas@cushwake.com



Todd Tolbert
Associate
+1 813 204 5350
todd.tolbert@cushwake.com



Lou Varsames
Executive Managing Director
+1 813 349 8379
lou.varsames@cushwake.com



Edwin Velez
Financial Analysis Manager
+1 813 204 5306
edwin.velez@cushwake.com



Gareth Watson
Research Analyst
+1 813 204 5314
gareth.watson@cushwake.com



Tom Wille
Senior Director
+1 813 349 8375
tom.wille@cushwake.com



Peter Yannotta
Executive Director
+1 732 407 2861
peter.yannotta@cushwake.com

Central Florida

TAMPA



Open House

South Florida WEST PALM BEACH



Mark Pateman Presented - March 2017

Hosted by ULI and the West Pam Beach Downtown Development Authority, the annual West Palm Beach Development & Investment Forum was held at the Hilton West Palm Beach to welcome la crème de la crème of West Palm Beach real estate society. Mark Pateman represented Cushman & Wakefield, opening the event with a West Palm Beach Market Overview, talking to the most significant projects happening in our city. In addition to highlighting what's poppin' in CRE in WPB, the program explored real estate investment trends, creative development strategies and projections on the opportunities ahead.

South Florida

WEST PALM BEACH



Tara England
Director
+1 561 227 2017
tara.England@cushwake.com



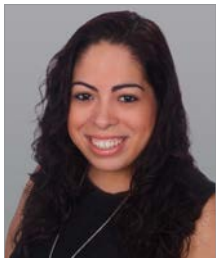
Merritt Etner
Associate
+1 561 227 2064
merritt.etner@cushwake.com



Michael Feldman
Director
+1 561 207 0852
michael.feldman@cushwake.com



Michael Gerrior
Senior Associate
+1 561 227 2051
michael.gerrior@cushwake.com



Ariana Gutierrez
Brokerage Coordinator
+1 561 227 2670
ariana.gutierrez@cushwake.com



Robert Klecinsky
Director
+1 561 227 2671
robert.klecinsky@cushwake.com



Kevin Landers
Director
+1 561 227 2062
kevin.landern@cushwake.com



Christine Maguire-King
Brokerage Coordinator
+954 377 0482
christine.mk@cushwake.com



Michael Osiecki
Senior Associate
+1 954 377 0459
michael.osiecki@cushwake.com



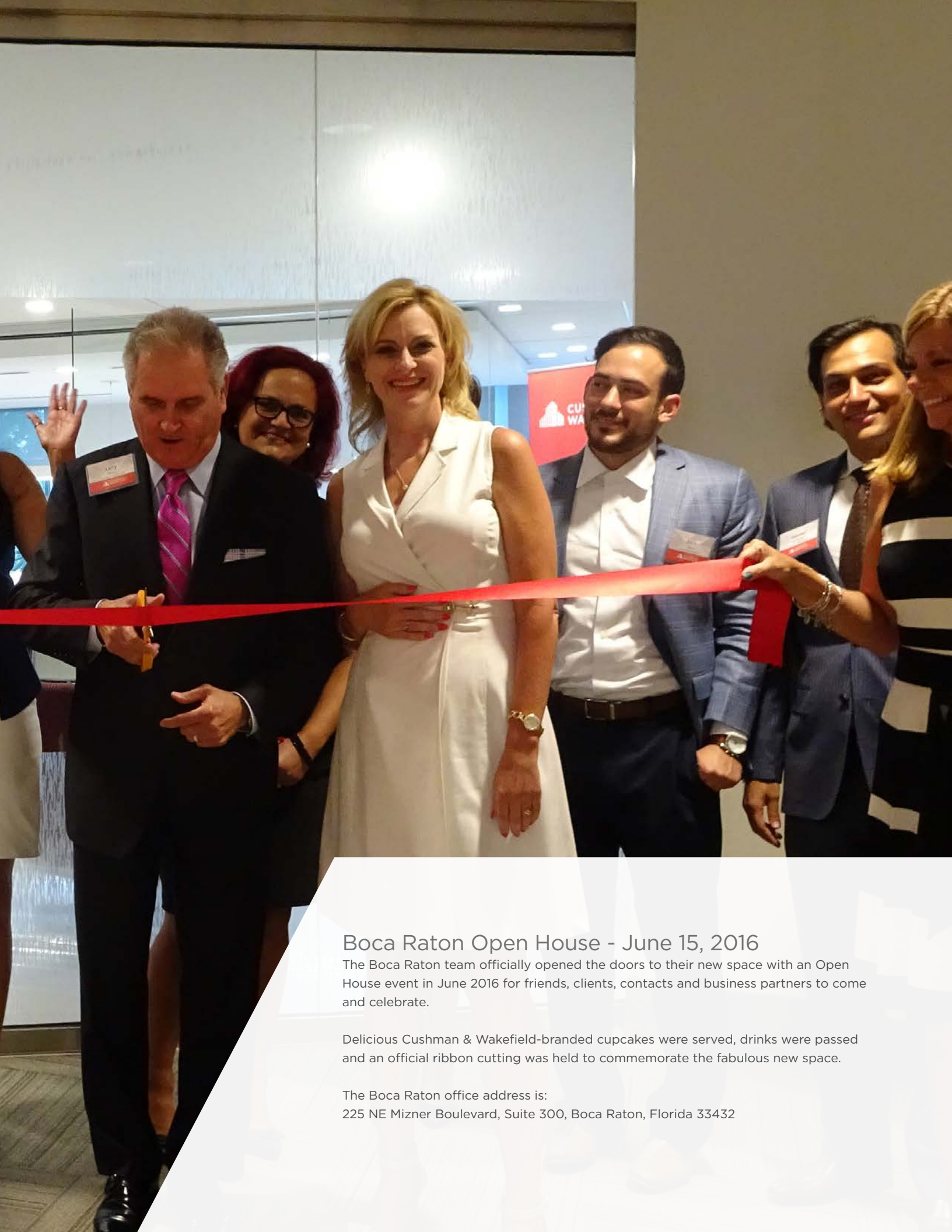
Mark Pateman
Managing Principal,
Palm Beach County
+1 561 227 2021
mark.pateman@cushwake.com



Christopher Thomson
Executive Director
+1 561 227 2019
christopher.thomson@cushwake.com

BOCA RATON





Boca Raton Open House - June 15, 2016

The Boca Raton team officially opened the doors to their new space with an Open House event in June 2016 for friends, clients, contacts and business partners to come and celebrate.

Delicious Cushman & Wakefield-branded cupcakes were served, drinks were passed and an official ribbon cutting was held to commemorate the fabulous new space.

The Boca Raton office address is:
225 NE Mizner Boulevard, Suite 300, Boca Raton, Florida 33432

South Florida

BOCA RATON



Matthew Avelar
Senior Associate
+1 631 425 1205
matthew.avelar@cushwake.com



Jacqueline Blake
Managing Director
1 954 377 0505
jacqueline.blake@cushwake.com



JD Brussels
Associate
+1 954 907 1754
jd.brussels@cushwake.com



John Criddle
Managing Director
1 954 377 0465
john.criddle@cushwake.com



James Crowley
Financial Analyst
1 954 377 0469
james.crowley@cushwake.com



Sarah DiMeco
Marketing Specialist
1 954 377 0531
sarah.dimeco@cushwake.com



Rick Etner
Executive Director
1 954 938 2607
rick.etner@cushwake.com



Joe Freitas
Senior Associate
1 561 512 8844
joe.freitas@cushwake.com



Marcia Henry
Receptionist
1 954 377 0474
marcia.henry@cushwake.com



Jason Hochman
Senior Director
1 954 377 0473
jason.hochman@cushwake.com



Uilani Kauhi
Brokerage Coordinator
1 954 771 0800
uilani.kauhi@cushwake.com



Judy Layton
Executive Administrative Assistant
1 954 377 0486
judy.layton@cushwake.com

South Florida

BOCA RATON



Jim McAleese
Senior Marketing Associate, Design
1 305 533 2859
jim.mcaleese@cushwake.com



Matthew McAllister
Director
1 561 227 2018
matthew.mcallister@cushwake.com



Chris Metzger
Executive Director
1 954 938 2608
chris.metzger@cushwake.com



Greg Miller
Senior Associate
1 954 377 0472
greg.miller@cushwake.com



Julie Miller
Senior Brokerage Coordinator
1 954 377 0461
julie.miller@cushwake.com



Rick Miller
Senior Director
1 305 965 8000
rick.miller@cushwake.com



Dominic Montazemi
Senior Director
1 305 533 2850
dominic.montazemi@cushwake.com



Scott O'Donnell
Executive Director
1 954 377 0474
scott.odonnell@cushwake.com



Heidi Peckhaus
Brokerage Coordinator
1 954 377 0471
heidi.peckhaus@cushwake.com



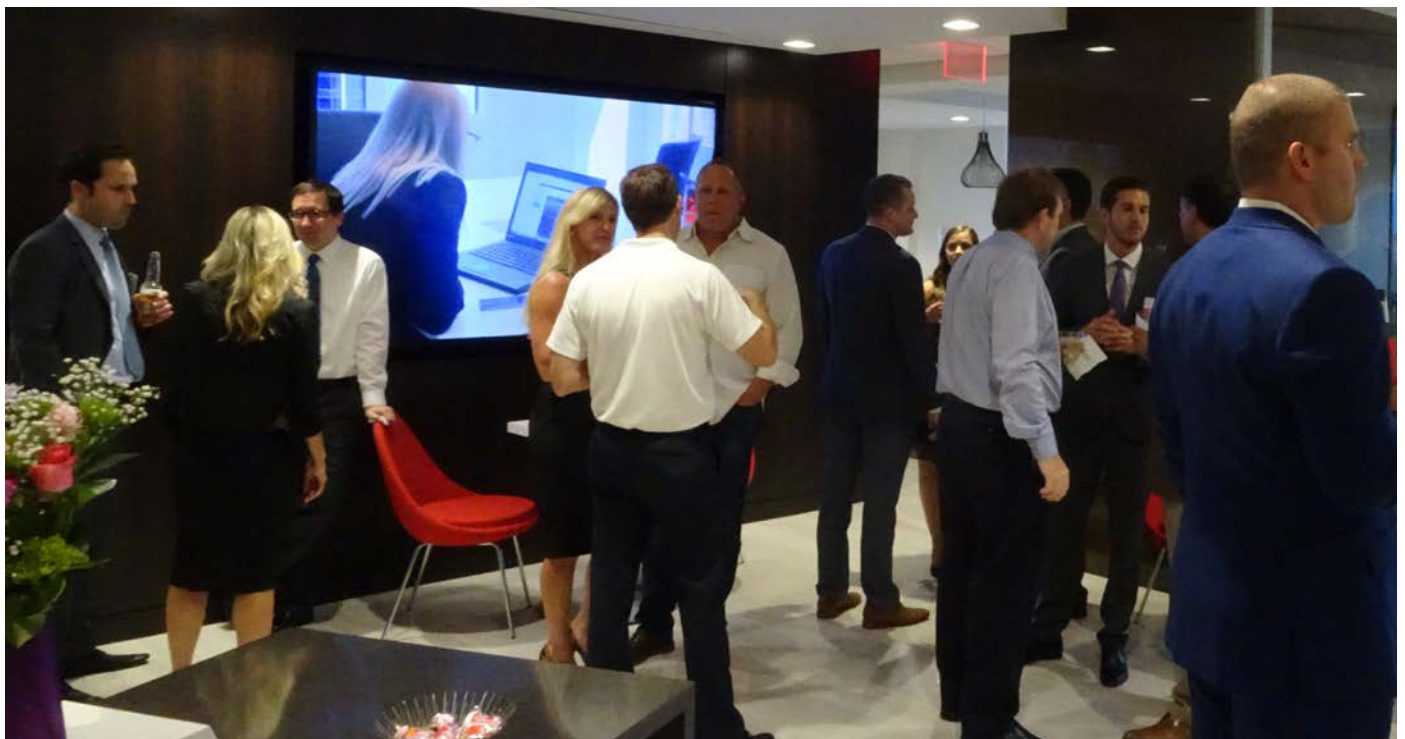
Valerie Tatum
Senior Research Analyst
1 954 377 0492
valerie.tatum@cushwake.com

South Florida

BOCA RATON



Open House



FORT LAUDERDALE





Multifamily Focus 2016 Investor Symposium - November 30, 2016

More than 250 real estate professionals attended the Florida Multifamily Focus: 2016 Investor Symposium on November 30th at the EAST Miami Hotel. The event was hosted by Robert Given and the Florida multifamily sales and debt professionals.

The event featured senior executives from every facet of the multifamily market together with Cushman & Wakefield professionals for an evening of networking, strategic business sessions and informational forums, specifically focused on Florida-relevant content. Business sessions included The Florida Paradigm; Long Demand for South Florida; Orlando & Tampa Apartment Demand; Building Miami Neighborhoods; and Florida's CRE. The day culminated with a cocktail reception that night and a golf outing the following morning.

South Florida

FORT LAUDERDALE



Troy Ballard
Senior Managing Director
+1 954 377 0514
troy.ballard@cushwake.com



AJ Belt
Senior Director
+1 954 377 0511
aj.belt@cushwake.com



Lisa Capozzi
Senior Brokerage Coordinator
+1 954 377 0497
lisa.capozzi@cushwake.com



Robert Given
Vice Chairman
+1 954 377 0513
robert.given@cushwake.com



Travis Herring
Executive Director
+1 954 377 0488
travis.herring@cushwake.com



Jeff Holding
Executive Director
+1 954 377 0512
jeff.holding@cushwake.com



Donna Korn
Managing Director
+1 954 377 0498
donna.korn@cushwake.com



Chase Kulp
Associate
+1 954 377 0494
chase.kulp@cushwake.com



Deanna Lobinsky
Executive Director
+1 954 377 0489
deanna.lobinsky@cushwake.com



Jessica Lunsford
Brokerage Coordinator
+1 954 377 0477
jessica.lunsford@cushwake.com



Kristen Mackey
Brokerage Coordinator /
Marketing Specialist
+1 954 377 0524
kristen.mackey@cushwake.com



Aaron Mandel
Financial Analyst
+1 954 377 0516
aaron.mandel@cushwake.com

South Florida

FORT LAUDERDALE



James P. Quinn
Senior Financial Analyst
+1 954 377 0520
james.p.quinn@cushwake.com



Katherine Ridgway
Director
+1 954 377 0468
katherine.ridgway@cushwake.com



Elizabeth Rogerio
Brokerage Coordinator
+1 954 377 0523
elizabeth.rogerio@cushwake.com



Zachary Sackley
Executive Managing Director
+1 954 377 0515
zachary.sackley@cushwake.com



Dawn Sells
Brokerage Coordinator
+1 954 377 0510
dawn.sells@cushwake.com



Perry Synanidis
Sr Financial Analyst
+1 954 377 0521
perry.synanidis@cushwake.com



Neal Victor
Director
+1 954 377 0518
neal.victor@cushwake.com



Calum Weaver
Senior Managing Director
+1 954 377 0517
calum.weaver@cushwake.com

MIAMI



Kickball Tournament

Miami brought up the heat at the Annual Kickball Tournament at Peacock Park, Coconut Grove. Teams from more than 5 prestigious organizations came together for afternoon of sports, laughter and a good sweat.



Feed the Gator

As part of the South Florida team's efforts to give back to the community, all S. Florida offices came together to donate canned foods for those in need. Each office had their own "gator" snaking through the lobby for one month and every week the goal was to "feed the gator" and fill the gator up with canned food for the needy.



Wings for Wishes

The Miami office was a sponsor at Wings for Wishes 2017, an event hosted by Make-A-Wish teammates Gal Bensaadon and Brian R. Exelbert. The afternoon event raised over \$50,000, 100% of which went directly to granting wishes for kids diagnosed with life-threatening medical conditions.



South Florida Feed the Gator Food Drive



Wings for Wishes 2017

South Florida

MIAMI



Miguel Alcivar
Director
+1 305 310 0320
miguel.alcivar@cushwake.com



Kim Azizy
Senior Director
+1 305 351 2450
kim.azizy@cushwake.com



Frank Begrowicz
Director
+1 305 533 2874
frank.begrowicz@cushwake.com



Suzanna Blaskovic
Brokerage Coordinator
+1 305 533 2870
suzanna.blaskovic@cushwake.com



Steven Bronstein
Senior Director
+1 305 533 2846
steven.bronstein@cushwake.com



Odalys Bueno
Receptionist
+1 305 371 4411
odalys.bueno@cushwake.com



Darren Campbell
Director
+1 786 354 3832
darren.campbell@cushwake.com



Rosendo Caveiro
Senior Director
+1 305 533 2877
rosendo.caveiro@cushwake.com



Adam Feinstein
Executive Director
+1 305 533 2863
adam.feinstein@cushwake.com



Brian Gale
Vice Chair
+1 305 807 3192
brian.gale@cushwake.com



Nicole Gamarra
Senior Brokerage Coordinator
+1 305 351 2467
nicole.gamarra@cushwake.com



Mark Gilbert
Executive Managing Director
+1 305 533 2866
mark.gilbert@cushwake.com

South Florida

MIAMI



Carlos Gonzalez
Branch Accountant, South Florida
+1 305 209 3675
carlos.gonzalez@cushwake.com



Mitchell Halpern
Senior Financial Analyst
+1 305 533-2855
mitchell.halpern@cushwake.com



Ryan Holtzman
Managing Director
+1 305 351 2469
ryan.holtzman@cushwake.com



Tony Jones
Executive Director
+1 305 351 2453
tony.jones@cushwake.com



Robert Kaplan
Executive Managing Director
+1 305 533 2860
robert.kaplan@cushwake.com



Stephanie Katona
Senior Brokerage Coordinator
+1 305 533 2880
stephanie.katona@cushwake.com



Spencer Kinsella
Financial Analyst
+1 305 351 2464
spencer.kinsella@cushwake.com



Chris Lentz
Senior Director
+1 305 533 2865
chris.lentz@cushwake.com



Ryan Levy
Director
+1 305 533 2885
ryan.levy@cushwake.com



Azam Malik
Financial Analyst
+1 305 533 2869
azam.malik@cushwake.com



Greg Masin
Senior Director
+1 305 533 2857
greg.masin@cushwake.com



Liza Medina
Office Manager
+1 305 533 2852
liza.medina@cushwake.com

South Florida

MIAMI



Olga Mendez
Operations Coordinator
+1 305 533 2849
olga.mendez@cushwake.com



Jeannette Mendoza
Director
+1 305 789 6528
jeannette.mendoza@cushwake.com



Gordon Messinger
Managing Director
+1 305 351 2461
gordon.messinger@cushwake.com



Shanna Naseery
Research Analyst
+1 301 535 2845
shanna.naseery@cushwake.com



John O'Neil
Senior Director
+1 305 533 2854
john.oneil@cushwake.com



Isabella Ramirez
Brokerage Coordinator
+1 305 533 2879
isabella.ramirez@cushwake.com



Wayne Ramoski
Executive Director
+1 305 533 2840
wayne.amoski@cushwake.com



Tyler Reynolds
Associate
+1 305 351 2465
tyler.reynolds@cushwake.com



Gian Rodriguez
Director
+1 305 351 2452
gian.rodriguez@cushwake.com



Mark Rutherford
Senior Financial Analyst
+1 305 533 2864
mark.rutherford@cushwake.com



Maggie Sidor
Brokerage Coordinator
+1 305 533 2890
margaret.sidor@cushwake.com



Jose Sime
Marketing Specialist
+1 305 533 2887
jose.sime@cushwake.com

South Florida

MIAMI



Gaby Sosa Rokaw
Senior Marketing Specialist
+1 305 533 2883
gaby.rokaw@cushwake.com



Skylar Stein
Associate
+1 305 533 2867
skylar.stein@cushwake.com



Andrew Trench
Managing Director
+1 305 533 2872
andrew.trench@cushwake.com



Kristen VargasVila
Marketing Specialist
+1 305 351 2456
kristen.vargasvila@cushwake.com



Andrea Vigil
Associate
+1 305 533 2858
andrea.vigil@cushwake.com

Alliance Office

FORT MYERS



Heather Adams
Executive Assistant to the CEO
+1 239 675 3221
hadams@cpswfl.com



John Albion
Director
+1 239 675 3219
jalbion@cpswfl.com



Bill Birthright II
Property Manager
bbirthright@cpswfl.com



Steve Bleedorn
Accounting Manager
+1 239 675 3239
sbleedorn@cpswfl.com



Michael Cassin
Accounting Assistant
+1 239 675 3226
mcassin@cpswfl.com



Tammy Cassin
Property Management Administrator
tcassin@cpswfl.com



John Hapka
Property Manager
+1 239 675 3227
jhapka@cpswfl.com



Marina Joel
CFO & Director of HR
+1 239 675 3225
mjoel@cpswfl.com



Suzanne Judd
Receptionist
+1 239 675 3237
frontdeskadmin@cpswfl.com



Claire Meyer
Research Assistant
+1 239 675 3217



Tonya Pitstick
Property Manager
+1 239 675 3229
tpitstick@cpswfl.com



Debbie Plourde
Executive Assistant to the Director of
Property Management
+1 239 675 3230
dplourde@cpswfl.com

Alliance Office

FORT MYERS



Gretchen Smith
Associate Director
+1 239 675 3216
gsmith@cpswfl.com



Shawn Stoneburner
Director
+1 239 675 3214
sstoneburner@cpswfl.com



Robin Swartz
Accounts Payable Manager
+1 239 675 3228
rswartz@cpswfl.com



Gary Tasman
CEO & Principal Broker
+1 239 675 3213
gtasman@cpswfl.com



Gene Van Vleck
Director of Facilities Management
+1 239 675 3231



Pamela Van Vleck
COO & Director of
Property Management
+1 239 675 3224
pvanvleck@cpswfl.com

Statewide ASSET SERVICES



Hank Brenner
Managing Principal
Tampa
+1 813 204 5353
hank.brenner@cushwake.com



Tim Rivers
Senior Managing Director
Tampa
+1 813 204 5367
tim.rivers@cushwake.com



Mike Agnew
Director
Orlando
+1 407 541 4398
mike.agnew@cushwake.com



Harry Moseley
Director of Engineering
Jacksonville
+1 904 380 9085
harry.moseley@cushwake.com



Jack McAllister
Portfolio Manager
Fort Lauderdale
+1 954 493 8069
jack.mcallister@cushwake.com



Leigh Griffin
Director of Operations
Miami
+1 305 374 3884
leigh.griffin@cushwake.com



Kent Walling
Director of Operations
Tampa
+1 813 514 2434
kent.walling@cushwake.com



Marlene Diaz
Director of Operations
Miami
+1 786 464 8806
marlene.diaz@cushwake.com



Marinee Perez
Operations Coordinator
Miami
+1 305 533 2861
marinee.perez@cushwake.com



Liz Babut
Executive Administrator
Tampa
+1 813 204 5338
liz.babut@cushwake.com

Cushman & Wakefield's acquisition of Taylor & Mathis and Gibson Development made
Cushman & Wakefield #1 in the State

47.1MM
SF MANAGED

300
EMPLOYEES

90
CLIENTS

Property Management

NORTH FLORIDA

Professional Property Management Staff

Carling Moore
Caryn Carreiro
Jennifer Ferguson
Jill-Suzanne Lile
Lisa Bailey

Engineering and Operations

Andrea Payne-Murrell
Arkeisha Seymore
Linda Graham
Charles Warden
Richard Santini
Joseph Cortez-Diaz
Mario O'Neill
Preston Garrett
Ronald Frederick
Ashley Hindman
Chrystal Jones
Gerome Davis
Jenteara Green
Jerard Thomas
John Rosado
Kentry Jones

CENTRAL FLORIDA

Professional Property Management Staff

Ady Cruz
Ben Anderson
Ben Steinert
B Leigh Ivy
Calvin "Cal" Buikema
Catrina Overstreet
Cheryl Dunakin
Chris Brown
Christina Walters
Cindy Povia
Danielle Peters
Donna Thompson
Jennifer Hatchett
Jessica LeBlanc-Hand
Karen Flores
Karen Morgan
Karen Poleyeff
Kathleen Hoyt
Kelly Davidson
Ketina "Tina" Brennan
Kotone West
Laura Nelson

Lizbeth Strother
Marissa Conrad
Nandi Curry
Raquel Ramos
Robert Smith
Robyn Miller
Sandy Ballestra
Shannon Lynn
Sherri Anne Forte
Steffanie Harris
Stephanie Barr
Tammy Roque
Venus Rodriguez
Wendy Cook
Yesenia Acosta

Engineering and Operations

Antonio Perez
Allan Nunez
Bryan Spataro
Brandon Ivy
Bruce Webber
Charles Hudnall
Chris Rogers
Charles "Sam" McGeorge
Christopher Pizzuto
Chuck Foos
Dana Carter
David McCoy
Dimas Pulgar
Domingo "Arnold" Gonzalez
Doug Landes
Erick Wren
Fermin Garcia Ruiz
Gerald Michaels
Geoffrey Gash
Glenn Presser
Gregory Moore
Gustavo Salavarieta
Alonso
Goran Veljkovic
Gustavo Lopez
Hector Feliciano
Henry Perez-Sanchez
Ignacio Miguenes
Jacob Coghill
James "Jim" Claycomb
Jamie Davila
Jorge "Armando" Cuervo
Joseph Strom
Junior Avril
Jeremy Castinado
Juan Araujo
Julio Ballester

Kelvin Rivera
Kevin Ezzell
Kevin Norton
Leith Repass
Leodanis Curbelo
Louis Morales
Luis Rose
Manuel Calvo
Michael Felice
Michael Guzman-Flores
Michael Wren
Omar Cruz
Patrick Rurka
Paul Baker
Philip "Pat" Campbell
Radi Khozam
Ricardo Veliz
Ricardo Trivino
Robert Shim
Robert Maichle
Rodney Cornwell
Seymour Phillips
Suresh Balgobind
William "Willie" Lara
Yancey Barcenas

SOUTH FLORIDA

Professional Property Management Staff

Bianca Garcia
Brenda Fonseca
Caridad Viamontes
Caron Davis
Colleen Sullivan
Danny Wong
Dulce Schuenzel
Beatrice Garcia
Bianca Rosa
Kady Zuckerman
Lilliam Brauthigam
Edward Prelaz
Elsa Pestana
Erica Santini
Hal Friedman
Janette Quincoses
Jenipher Ortiz
Jerry Radtke
Karen Mulherin
Katia Merchan
Kristen Carlton
Kristen Sarubbe
Kristina Alvernia
Lesyani "Leslie" Garcia
Leslie Williams
Leslie Quintero
Linda Peifer

Lisa Mitchell
Maggie Vassilaros
Maria Mayer
Michael Wilkie
Milly Pinero
Monique Bardino
Nicole Alvarez
Paula Goffman
Peter Romero
Sammy Dawes
Sasha-Renae Gilpin
Siulan Dadan
Sussette Sortino
Tatiana Gallardo
Tsalia Corbett
Thomas Sawyer
Tracey McFarlane
Trixy Walker
Vivian Lowell
Wendy Cal
Wendy Guillen
Yaclyn Hernandez
Yani Martinez
Yamil Kahl
Yesenia Ruiz

Engineering and Operations

Jorge Rojas
Rayner "Daniel" Calderon
Howard Fabian
Nigi (Niyireth) Calvo
Warren Walker
Anthony Burgess
Blas Bravo
Carlos A. Padilla
Carlos Baez
Carlos Molina
Carmelo Moctezuma
Cesar DeLaTerga
Christopher Russell
David Gort
Dennis Scallon
Dennis Velez-Negron
Eddy Sarria
Edgar Villegas
Emilio Hernandez
Eric Irizarry
Eric Valdes
Francisco "Frank" Suarez
Geoffrey Birdsall
Gil Villasenor
Gregory Patton
Guillermo Santos
Gustavo Vargas
Hector Perez

James "Jim" Farley
Javier Castro
John Wargo
Jorge Garciga
Joe Carrado
Joe Fleming
Julio Morales
Kenneal Harrigan
Lazaro Flores
Locksley Johnson
Luis A. Rodriguez
Luis Herrera
Luis Monroy
Mario Murillo
Marlon Caro
Maxerne "Max" Saintil
Michael Howard
Miguel Suarez
Omar Henriquez
Pete Fernandez
Philip Catasus
Pierre Jean-Baptiste
Rafael Exposito
Rafael Gonzalez
Rafael Lopez
Rafael Vega
Ralph Luca
Raylandy Leon
Rodolfo Hernandez-Isla
Roman Gomez-Guada
Segundo Henriquez
Shaun Penn
Shaun Perkins
Sucre Reyes
Tomas Contreras
Vinod Mahadeo
William Espinoza
Yovani Barban
Jo Ann "Joey" Geise
Alberto Paim
Arnie Hernandez
Arthur Charping
Byron Ortuno
Daniel Oviedo
Darrell Davis
Francisco "Javier" Flores
Icel Morfa
Juan Miguel Castro
Julio Lagos-Martinez
Luis Ramirez-Telles
Noe Mondragon
Osmany Garciga
Rene Gonzalez
Sebastian Narvaez

Statewide PROJECT & DEVELOPMENT SERVICES (PDS)

In 2016, Project & Development Services generated revenues of **\$1.7 Million** for the state of Florida.

1.3MM
SF OF PROJECTS
MANAGED

9
PROJECT
MANAGERS

118
CLIENTS
SERVED

OVERVIEW OF SERVICES

- Strategic planning
- Benchmarking studies
- Building and Work Letter analysis
- Work Letter negotiation*
- Budget and schedule development*
- Bid procurement and contract negotiation*
- Design management
- Construction management*
- Furniture, fixtures and equipment management
- Relocation and move management
- Decommissioning of former space
- Final project close-out*

* Landlord Representative Services



Carey Poole
Managing Director
Tampa
+1 813 424 3214
carey.poole@cushwake.com



Tracy Palumbo
Project Management Director
Orlando
+1 407 541 4393
tracy.palumbo@cushwake.com



Lynda Brookshire
Project Manager Director
Tampa
+1 404 682 3385
lynda.brookshire@cushwake.com

Statewide PDS

...it's about creating, enhancing, and protecting value as it relates to your work environment.



Richard Bell
Senior Project Manager
Tampa
+1 813 424 3211
richard.bell@cushwake.com



Jenny Campos
Project Coordinator
Boca Raton
+1 304 351 2457
jenny.campos@cushwake.com



Natalie Davis
Project Manager
Tampa
+1 813 204 5362
natalie.davis@cushwake.com



Rob Hillpot
Senior Project Manager
Tampa
+1 813 498 6831
rob.hillpot@cushwake.com



Melissa Kennedy
Senior Project Manager
Tampa
+1 813 924 2082
melissa.kennedy@cushwake.com



Carolyn Krause
Project Manager
Tampa
+1 813 204 5337
carolyn.krause@cushwake.com



Ronnie Lopez
Project Manager
Boca Raton
+1 305 533 2891
ronnie.lopez@cushwake.com



Andrew Niemann
Project Manager
Orlando
+1 407 541 4383
andrew.niemann@cushwake.com



Mimoza Novaj
Project Coordinator
Orlando
+1 407 541 4424
mimoza.novaj@cushwake.com



Vanessa Torres
Project Coordinator
Tampa
+1 813 349 8342
vanessa.torres@cushwake.com



Carmen Uriarte
Project Manager
Miami
+1 305 533 2881
carmen.uriarte@cushwake.com



Kristi Wetherholt
Senior Project Manager
Tampa
+1 404 853 5381
kristi.wetherholt@cushwake.com

Statewide VALUATION & ADVISORY

Achieved a reduction of roughly \$4 million, resulting in a tax savings of approximately **\$85,000** for a Corporate Campus

Reduced the annual property taxes from **\$2.35 million to \$1.1 million** for a regional mall

30+
V&A PROFESSIONALS



Steve Saunders
Executive Managing Director
Orlando
+1 407 541 4384
steve.saunders@cushwake.com



Melania Arias
Administrative Assistant
Boca Raton
+1 954 958 0819
melania.arias@cushwake.com



Todd Barfield
Senior Director
Orlando
+1 407 541 4405
todd.barfield@cushwake.com



Bob Blackwood
Senior Director
Orlando
+1 407 541 4427
bob.blackwood@cushwake.com



Will Faber
Director
Orlando
+1 407 541 4419
will.faber@cushwake.com

PROPERTY TYPES REPRESENTED

- 122** Agricultural/Land
- 7** Assembly/Meeting Place
- 20** Healthcare
- 120** Hospitality
- 218** Industrial
- 181** Multifamily
- 291** Office
- 504** Residential
- 429** Retail
- 34** Senior Housing
- 21** Special Purpose
- 21** Sports & Entertainment

Statewide VALUATION & ADVISORY



Tammy Ginader
Senior Administrative Assistant
Orlando
+1 407 541 3086
tammy.ginader@cushwake.com



David Gray
Executive Managing Director
Boca Raton
+1 954 958 0810
david.gray@cushwake.com



Edy Gross
Senior Director
Boca Raton
+1 954 958 0808
edy.gross@cushwake.com



Lori Harlow
Administrative Assistant
Tampa
+1 239 344 0150
lori.harlow@cushwake.com



Angie Hart
Administrative Assistant
Stuart
+1 772 678 7760
angie.hart@cushwake.com



Justin Hofford
Senior Director
Tampa
+1 813 204 5321
justin.hofford@cushwake.com



Julie Holt
Senior Director
Jacksonville
+1 904 380 8338
julie.holt@cushwake.com



Matthew Lowdermilk
Appraiser
Stuart
+1 772 678 7760
matthew.lowdermilk@cushwake.com



Ryan Maker
Junior Appraiser
Boca Raton
+1 954 377 0548
ryan-maker@cushwake.com



Steve Mauriello
Director
Orlando
+1 407 541 4404
steve.mauriello@cushwake.com



Michael McNamara
Executive Director
Boca Raton
+1 954 958 0818
michael.mcnamara@cushwake.com



Meghan Minor
Junior Appraiser
Stuart
+1 772 678 7760
meghan.minor@cushwake.com

Statewide VALUATION & ADVISORY



Melissa Moore
Junior Appraiser
Orlando
+1 407 241 3078
melissa.moore@cushwake.com



David Pichler
Director
Boca Raton
+1 954 638 9784
david.pichler@cushwake.com



Scott Powell
Managing Director
Stuart
+1 772 678 7760
scott.powell@cushwake.com



Tim Powell
Senior Director
Orlando
+1 407 541 4385
tim.powell@cushwake.com



Sean Reilly
Senior Director
Tampa
+1 239 332 1125
sean.reilly@cushwake.com



William Rezendes
Senior Appraiser
Stuart
+1 772 678 7760
bill.rezendes@cushwake.com



Christopher Samson
Senior Appraiser
Stuart
+1 772 678 7760
christopher.samson@cushwake.com



Adrian Sanchez
Senior Director
Boca Raton
+1 954 377 0450
adrian.sanchez@cushwake.com



Mike Shanahan
Appraiser
Stuart
+1 772 678 7760
mike.shanahan@cushwake.com



Sam Steele
Director
Boca Raton
+1 954 377 0454
sam.steele@cushwake.com



Jim Walsh
Executive Director
Boca Raton
+1 954 938 2615
jim.walsh@cushwake.com



Todd Younghans
Appraiser
Stuart
+1 772 678 7760
todd.younghans@cushwake.com



David Pichler: FLORIDA'S OLYMPIC DIVER TURNED TAX MAN

For all of us who know him, David Pichler is our “tax man,” the man you go to for property appraisal and valuation. Before he joined us here at Cushman & Wakefield, though, David was a world-class Olympic diver who competed in both the 1996 Olympics in Atlanta and the 2000 Olympics in Sydney, where he was elected team captain. We wanted to hear from David himself on how he made the transition from Olympian to real estate, athletes to watch in Rio this summer and how his perfect day begins and ends.

Where did you grow up? I grew up in Butler, Pennsylvania, thirty miles north of Pittsburgh. I left Butler to go to college at The Ohio State University. After graduating college, I moved to Ft. Lauderdale in 1992. I had family here, my brother, his wife and my two nieces, and I knew there were several diving programs in the area.

Share a moment from Sydney or Atlanta that particularly stands out for you. My most memorable moment from either Olympics would be standing on the platform in the 1996 games in Atlanta, in front of the tremendous home country crowd, and they went crazy when my name was announced. It seemed to last forever. It was such an incredible feeling of support and pride in representing my country.

How did you transition from swimming into commercial real estate? After diving and competing in two Olympics, I had a tough time finding out what I wanted to do and tried several things. I had an interest in real estate and spoke with a friend that was an appraiser and felt it was a good fit for me. I worked as a residential and commercial appraiser until the market

crashed. After that, I went to work at the Broward County Property Appraiser's office as an assessor / appraiser and they put me in the Income and VAB Hearings department. After working for a couple consulting and accounting firms, I happily made my way to Cushman & Wakefield.

What is your role at Cushman & Wakefield Florida? I am a property tax consultant. Property taxes are based on an assessed value the County Assessor assigns to a property. My primary job is to review the assessed (or taxable) value of a property to determine if it is in line with the fee simple market value as of the assessment date (usually January 1st of each year). If the assessed value is higher than the market value, I file an appeal with the local taxing authority and build a case to lower it. I often work with the assessors to resolve the matter, but it usually needs to be resolved by a Special Magistrate in an informal county hearing process. Other services our property tax service provides are property tax due diligence (prior to purchase or development) and property tax budgeting.

How can your specialty be of assistance to the rest of our Florida team?

- Lowering property taxes make clients/property owners happy and is a good way to secure client relationships (property taxes are the largest real estate operating expense). Lower property taxes equal reduced rental rates or pass-throughs, which make it easier to rent vacant spaces and for better tenant retention.
- Property tax consulting is a contingency fee service. No cost to a client unless we save them money.
- Property tax pre-acquisition due diligence is essential. Clients will thank you for making them aware of possible tax jumps after acquisitions.

Giving Back

TAMPA PIG JIG

On October 22, the Tampa office was a Spitfire sponsor at the 2016 Tampa Pig Jig with a jam-packed day of volunteering, BBQ cooking, good music and good times.

The Tampa Pig Jig is 100% fully run by volunteers and Tampa colleagues were no exception, serving beer at the Cushman & Wakefield Beer Garden.

Three Cushman & Wakefield employees - Todd Tolbert, KC Tenukas and Jason Donald - participated in the Corporate BBQ competition. Jason Donald cooked on behalf of Cushman & Wakefield and made it in the top 20 out of 50 teams that competed that day. Jason placed 4th overall with his Compart Duroc All Natural Mouthwatering Pork Butt.

Larry Richey and Doug Rothschild served as BBQ competition judges and tasted more than 50 dishes over the course of three hours - neither one complained about their duties.

The Tampa Pig Jig is an annual fundraiser event hosted on downtown Tampa's beautiful waterfront. The event benefits NephCure Kidney International, the only non-profit committed to supporting research, improving treatment and finding a cure for the debilitating kidney disease, FSGS (Focal Segmental Glomerulosclerosis and Nephrotic Syndrome).

The 2016 Tampa Pig Jig raised more than \$800,000 to support FSGS.



Giving Back

ORLANDO NAIOP'S FEEDING CHILDREN EVERYWHERE

In November 2016, our Orlando office participated in the Downtown Corporate Hunger Project hosted by NAIOP's Developing Leaders group. The event was a food-packing event benefiting Feeding Children Everywhere, a local Orlando charity, who has provided 52,000,000 healthy meals to children in need.

In addition to meal packing, NAIOP hosted a networking portion where attendees had the opportunity to meet and connect with other local real estate organizations and companies.

The event raised more than \$7,000 and 20,160 meals were packed and distributed to the Christian Service Center for Central Florida.



Giving Back TAMPA UNITED WAY

Congratulations to our Tampa team on an extremely successful United Way Month of Caring Campaign!

The month-long campaign consisted of community service, internal events and a capital raising campaign.

Most notably, Tampa set a goal of raising \$22,500 from September 15, 2016 - October 15, 2016 and surpassed their goal by \$4,600! The grand total for the 2016 Campaign was \$27,100! A 59% increase in capital raising from 2015! An amazing feat!

In addition to the money raised, the team participated in several activities including:

- Tour of the 2-1-1 Crisis Center of Tampa Bay, a United Way partner, that provides over 4,000 services for people in need in the Tampa Bay area.
- Great Bowls of Fire Game Day Chili Cook-Off, where 10 employees squared off and competed to be the Great Bowls of Fire Game Day Chili Champion. Chili bowls were \$1 / tasting for hungry employees and this event alone raised \$369. Todd Tolbert's chili came out victorious.
- Tropical Day & Silent Auction where employees enjoyed tropical cocktails while bidding on new or nearly new items brought in from their fellow Tampa colleagues with proceeds from the silent auction going to the United Way. The hottest auction item was custom invites designed by Tampa's own Marketing Maven, Shannon Breher.
- United Way's Day of Caring where the Tampa team gave back at two local non-profits. One group spent the day at Metropolitan Ministries where the team worked in the kitchen assisting with meal prep and in the warehouse where they sorted clothes and other donated items. A second group volunteered at Sterling Heights Senior Nutrition Center where volunteers organized games with local Tampa senior citizens and assisted with lunch service.

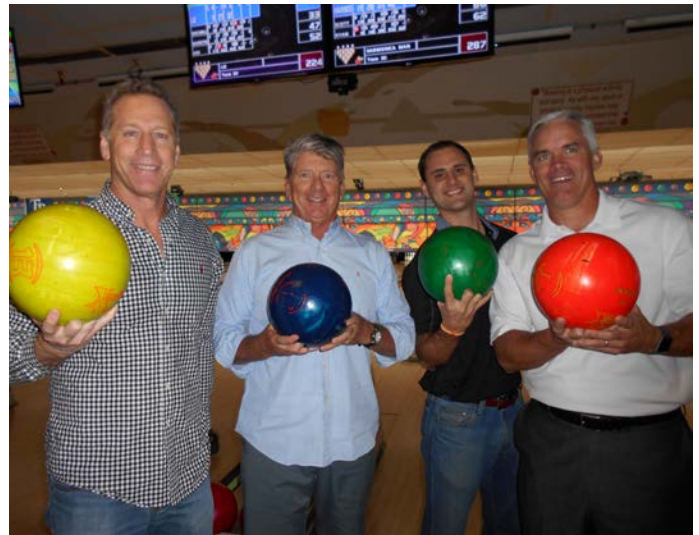


MONTH OF CARING



The campaign wrapped up with a Celebrate Caring Bowling Event with Scott Garlick, Mike Davis, Ryan Reynolds and Kevin McCarron taking home the win for most points scored.

The United Way has been one of the Tampa office's corporate charitable partners for the past 30 years. The United Way brings the community together to break the generational cycle of poverty by focusing on education; providing financial and employment education for adults to achieve long-term financial stability; and helping individuals and families in need.



Giving Back BACK TO SCHOOL

August 2016 marked the official start of back to school season for kids in Florida and Cushman & Wakefield continued its strong history of giving back by putting these kids first when they needed it most. Returning back to school can be a challenge for children who do not have access to the supplies they need, so as a state, we did our best to lend a helping hand. Here is how our Cushman & Wakefield Florida offices did their part to support kids in need this back to school season.

Waterford Atrium



Our South Florida Asset Services team at the Waterford-Atrium property hosted their annual "Fill the Bus Supply Drive" on Wednesday, August 17. The event was a summer-long drive to collect school supplies for underprivileged Miami-Dade school students and fill an actual school bus with notebooks, pens, pencils, erasers, rules and folders, which were then distributed to more than 15 Miami-Dade County schools.

The Waterford-Atrium team works with Communities in Schools Miami (CIS) on this annual event. CIS works to empower at-risk kids in the District's most challenged schools by bringing programs and resources that are proven to keep kids in school and motivated to graduate.

Orlando

Our Orlando office teamed up at the beginning of August to collect supplies benefiting the Boys and Girls Club of Central Florida.

Since 1994, the Boys & Girls Club of Central Florida has helped inspire hope and opportunity for at-risk children in the local community. The Boys & Girls Club of Central Florida provides safe places for 14,000 children in the Orlando metro area to learn and grow.

There are 30 clubs total in the Orlando area, including Brevard, Orange, Osceola, and Seminole counties.



Miami

Our Miami office participated in an annual back to school supply drive for Southside Elementary in Miami's Brickell neighborhood. With the organization from Olga Mendez (pictured) and Gian Rodriguez, the office managed to collect a substantial amount of supplies to bring to the school on August 19th. Principal Salvatore Schiavone was there to accept the donations and make sure that they are properly distributed to the students.

Jacksonville

The Jacksonville office participated in a week-long drive that collected USB flash drives, scissors, pencil boxes, binders and backpacks benefiting Children's Home Society of Florida.

Boca Raton & West Palm Beach

Our West Palm Beach and Boca Raton offices helped to collect a massive amount of much needed supplies for the West Riviera Elementary School in West Palm Beach.

Principal Tonja Latson was there to accept the donations and make sure that they are properly distributed to the students.

Christopher Thomson from our West Palm Beach office with Uilani Kauhi and Julie Miller from our Boca Raton office spearheaded this drive with much enthusiasm and a great turn-out.



