

**ALFATECH**

INNOVATIVE IDEAS | INTEGRATED SOLUTIONS | SUSTAINABLE PARTNERS



- 01 OVERVIEW / Profile & Services
- 02 Sustainability
- 03 Markets & Relevant Projects





01

OVERVIEW

Profile & Services



# OVERVIEW

The San Francisco Bay Area and Silicon Valley have been experiencing a real estate renaissance over the past several years, driven by a number of factors. Talent pool is a big part: Silicon Valley technology firms are expanding to San Francisco to attract employees who desire the urban lifestyle, while expansion to the East Bay to attracts employees for other reasons, and so forth.

Many new developments are underway, some quite sizable and with complex teaming structures, and more in the planning which will attract more movement to other parts of the Bay Area. Rental rates continue to climb and housing prices continue to rise as a reflection of this.

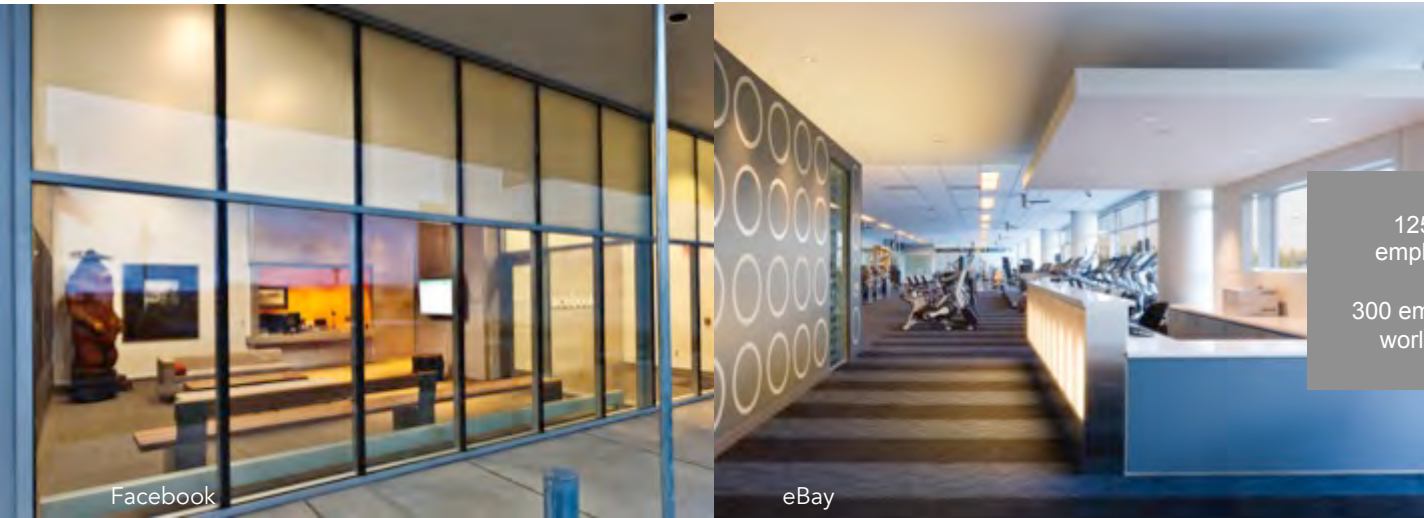
While eyes continue to be on the San Francisco Bay Area/Silicon Valley real estate market, many companies with a broader reach are driving expansion across California, throughout the United States and around the world.

Many of our clients continue to rely on AlfaTech's resources and knowledge base as a valued team player while they are making important decisions about their facility needs whether locally or globally.

By 2050,  
**70%**  
of the world's  
population will be  
living and working in an  
urban environment



# PROFILE



125 US employees  
300 employees worldwide

**AlfaTech** has built its reputation on providing the most innovative and sustainable engineering solutions for all levels of urban residential development, from master planning through construction administration.

Our presence is not only California and Atlanta, but also internationally. Our clients include numerous large multi-national firms, many ongoing clients we've been serving for years.

We strive to provide intelligent and innovative strategies starting with project inception, in order to provide maximum benefit to our clients during the entire development process whether it be new residential villages, mixed use projects or revitalization of existing communities.

Our team provides the most appropriate engineering design solutions which are highly efficient and cost effective, and promotes the greatest possible return on investment for our clients.

Our goal is to build the most dynamic relationships, be attentive to the needs of our clients and partners, and be true team players. With this mindset, we've built a stellar list of clients.



# CLIENTS

3M Company	Boston Scientific	Fidelity Investments	Molecular Devices Corporation	San Jose State University
AARP	Bradford Schools Inc	Fireman's Fund Insurance	Monterey Peninsula College	San Mateo Community College
Abbott Biotherapeutics	Brewer, Fraser & Holland	First Franklin Financial Corp	Morgan Hill USD	San Mateo County Office of Education
Abbott Laboratories	Brian L. Cochran Associates	Flextronics	Morgan Stanley Corporation	Sandia Laboratories
Abbott Vascular Inc	Bristol-Myers Squibb	Foundry Networks	Morrison & Foerster LLP	Santa Clara University
Abgenix	Broadcom Corporation	Franklin Templeton Investments	Motorola	SAP Labs LLC
Abt Associates Inc	Broadreach Capital Partners	Genentech	Mountain View School District	Saratoga USD
ACCO Engineered Systems	Brocade	General Dynamics	MW Zander	Savvis
Adaptec Inc	Cadence Design Systems	General Electric Co	NAI Global	Seagate Technology
AOC	Cal Pacific Med Center	General Services Administration	NASA-Ames	Sequoia Hospital CHW
Adobe Systems	California Pacific Orthopedic Sports & Medicine	Genzyme Corporation	National Semiconductor	Sequoia Union HSD
Advanced Micro Devices Inc	CarrAmerica Development	Gilead Sciences Inc	Network Appliance	Siemens
Advantest America, Inc.	Chabot Las Positas Community College District	Goldman Sachs & Co	Nokia	Skywalker (Lucas Film)
Advent Software, Inc.	Charles Schwab	Good Samaritan Hospital	Nortel Networks	SLAC National Accelerator Laboratory
Aetna Inc	Chevron	Google	Northrop Grumman Corp.	Solectron Corporation
Affymetrix	Children's Hospital Oakland	GSA	Novartis	Sony America
Agilent Technologies Inc	Chinese Hospital	Hayward USD	Novell Inc	Spanion
Airgas	Chiron Corporation	Hewlett Packard	Novellus Systems Inc	Sprint
Akamai Technologies	Cisco Systems Inc	Highland Hospital	NVIDIA	SRI International (Stanford Research)
Alcoa Inc	Citigroup Realty Services	Hitachi America Ltd	Ohlone Community College	St. Agnes Medical Center
Allen, Matkins et al	College of Contra Costa	IBM	OptiSolar Inc	St. Francis Memorial Hospital
Alliance Bernstein LLP	College of Marin	Impax Laboratories Inc	Oracle Corporation	St. Joseph Hospital
Alta Bates Health System	Colliers International	Informatica Corporation	Orchard Properties	St. Mary's Hospital
Altera Corporation	Computer Associates Int'l	Intel	Pacific Bell	Stanford Healthcare & Clinics
Alum Rock School District	Compuware	InterMune	Pacific Gas & Electric	Stanford University
Alza Corporation	CoreSite	Intuit	Panattoni Europe	Stanford University Medical Center
Amazon/Lab 126	Cornell University	J&W Scientific	Pfizer Inc	Stion Corporation
Ambiance Associates	County of Monterey	JDS Uniphase Corporation	Philips Semiconductor	Stryker Endoscopy
Ambience Interiors Pvt Ltd.	County of Sacramento	John Muir Medical Center	Pitney Bowes Inc	Stubhub
Amdocs	County of San Mateo	Johnson & Johnson	Polycom	Sun Microsystems Inc
American Express Company	County of Santa Clara	Johnson Controls	Port of San Francisco	SunPower
Amgen Inc	Credence	JP Morgan Chase	Presidio Trust	Sutter Health
Amprius	CSAA	Juniper Networks Inc	Price Waterhouse Coopers	Sybase Inc
Amstein + Walther	CSU Northridge	Junipero Serra High School	Prudential C.R.E.S.	Symantec
Anixter	Daughters of Charity Health	Kaiser Permanente	Qualcomm	Synopsys Inc
Applied Dynamics Inc	Dell	Kasowitz, Benson et al	Queens Medical Center	Sysorex
Applied Materials	Delta Products	Kimpton Hotels	RAMBUS	T-Mobile
Atmel Corp	Deloitte Consulting LLP	KLA-Tencor Corp	Raytheon Company	Tencent
Autodesk Inc	Desert Troon Companies	Lam Research	Rensselaer County IDA	Tesla Motors
Avaya	Digital Realty Trust	Laney College	Riverbed Technologies	The Gap
Avid Technology Inc	Dignity Health	Lawrence Berkeley Lab	Robert Half International	Twitter
Avidex	Dominican Hospital	Letterman Digital Arts	Roche Bioscience	UC Berkeley
BAE Systems Inc	Dupont	Levi Strauss & Company	Ross Stores Inc	UC Davis
Bank of America	East Side Union HSD	Linear Technology	Sacramento Municipal Utility District	UC San Francisco
Banuaizi Architects	eBay	LinkedIn	Safeway Inc	UC Santa Cruz
Bayer	Eli Lilly & Company	Lockheed Martin Corp	Saint Louise Regional Hospital	UCLA
Bechtel Corporation	El Camino Hospital	Logitech	Salesforce.com	Ultratech
Bell, Rosenberg et al	Elsevier Inc	Longs Drug Stores	Samaritan Medical Center	University of Colorado Hospital
Berryessa USD	Emirates National Oil	Los Gatos Saratoga HSD	Samsung	URS
Bingham McCutchen LLP	Empire State Development	Lucas Film LTD	San Francisco Center For Economic	Verisign
Bio-Rad Laboratories	Equinix	Marriott International	Development	Verizon Communications
BioGenex	Equis Corporation	Marvell Semiconductor Inc	San Francisco City Hall	Veteran's Administration
BioMed Realty Trust Inc	Ericsson	Maxim	San Francisco Center For Economic	Visa International
Bloom Energy	Ernst & Young LLP	McKesson	Development	VMware
BMC Software	Exelixis	Medarex	San Francisco International Airport	Wachovia Bank
Booz Allen Hamilton Inc	Facebook	Menlo Park City School District	San Francisco USD	Yahoo
Boston Properties	Ferrari Maserati of Silicon Valley	Microsoft Corporation	San Jose Redevelopment Agency	

# SERVICES

## SUSTAINABILITY

Sustainability Planning (Organizational and Infrastructural)  
LEED / Green Building Consulting  
Masterplanning  
Life Cycle Cost Assessment  
Occupant Wellness and Comfort

## MECHANICAL ENGINEERING DESIGN

HVAC  
Heating Systems Water and Gas  
Cooling Systems / Chilled Water  
Dehumidification Systems  
Contamination Sensitive Areas  
Industrial Hygiene Systems  
Low Tolerance Temp Control  
Title 24 Analysis and Design  
Heat Recovery Systems  
Central Utility Plants  
Air Handlers HVAC System Controls  
PLC Programming  
Fire Protection and Plumbing

## ADVANCED SIMULATIONS

Façade Engineering  
CFD / Wind Studies  
Wind Studies  
Thermal Stratification Studies  
Energy Concept Studies

## ELECTRICAL ENGINEERING DESIGN

Power Systems  
Emergency & Standby Power  
Lighting and Lighting Controls  
Security Systems  
24 / 7 Power Systems (UPS)  
Power Monitoring Systems  
Toxic Gas Monitoring

## ELECTRICAL ENGINEERING DESIGN (Continued)

Graphic Control and Alarm Panels  
Grounding and Bonding  
Energy Management  
Energy Conservation  
Fire Alarm Systems  
Public Address Systems  
Plug Loads Control

## DESIGNER LIGHTING

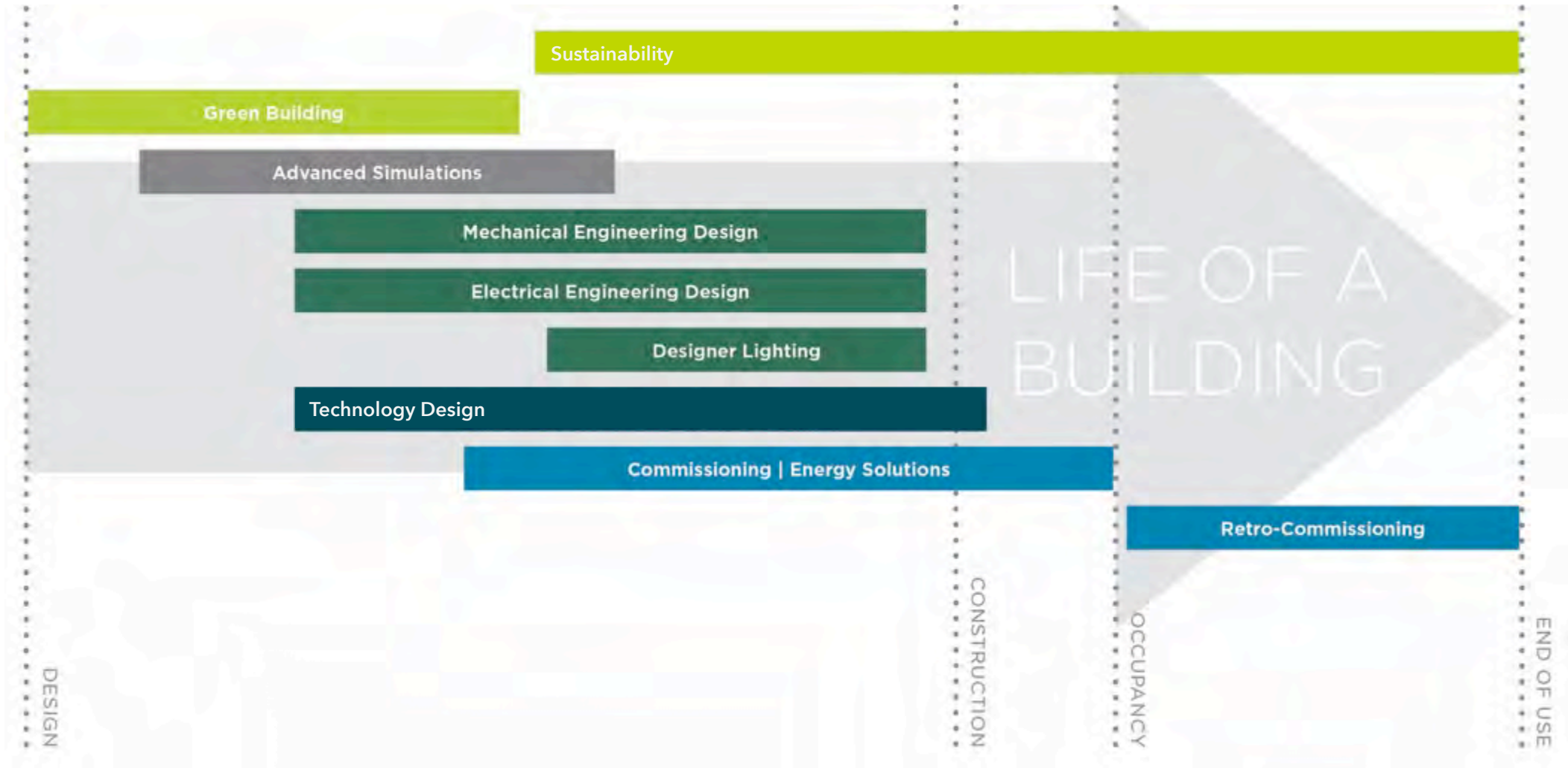
Lighting and Lighting Controls  
Lighting Calculations  
Customized ROI Calculations  
Sustainable Lighting Design  
Energy Savings Analysis  
Custom Lighting Fixtures  
Design for finishes, fabrics and light sources

## TECHNOLOGY DESIGN

Low Voltage Design  
Security Design  
Audio Visual Design  
Wireless Design & Modeling  
Strategic Consulting  
Project Management  
Relocation & Migration

## COMMISSIONING | ENERGY SOLUTIONS

Early Quantifiable Energy Study  
Incentives  
Energy Star® Assessments  
Retro-commissioning (RCx)  
Monitoring Brand Continuous Commissioning (MBCCx)  
ASHRAE Level 1, 2 and 3 Energy Audits  
Measurement and Verification (M&V) of installed projects  
Energy Modeling  
Net Zero Energy Budgeting  
HVAC/Chilled Water Plant Optimization







02

SUSTAINABILITY




## SUSTAINABILITY

At **AlfaTech**, we have a multidisciplinary team of experts to assess and design projects with a holistic approach. Working along with owners, architects and other stakeholders, we examine every project in a comprehensive, systematic approach to meet the client's sustainability, energy, water and environmental quality goals.

AlfaTech goes beyond engineering – our suite of energy, water and sustainability assessment services creates projects that benefit the triple bottom line – people, plant and profit. We provide expert studies in all qualitative aspects of the built environment such as day lighting, thermal comfort, advanced lighting control design, and technology integration.

Our offices in the San Francisco Bay Area are a testimonial to our commitment to promoting sustainable practices. We have implemented measures in daylight harvesting and advanced lighting controls to optimize electricity usage, and have put in measures to reduce overall waste and beat San Francisco's overall recycling rates.

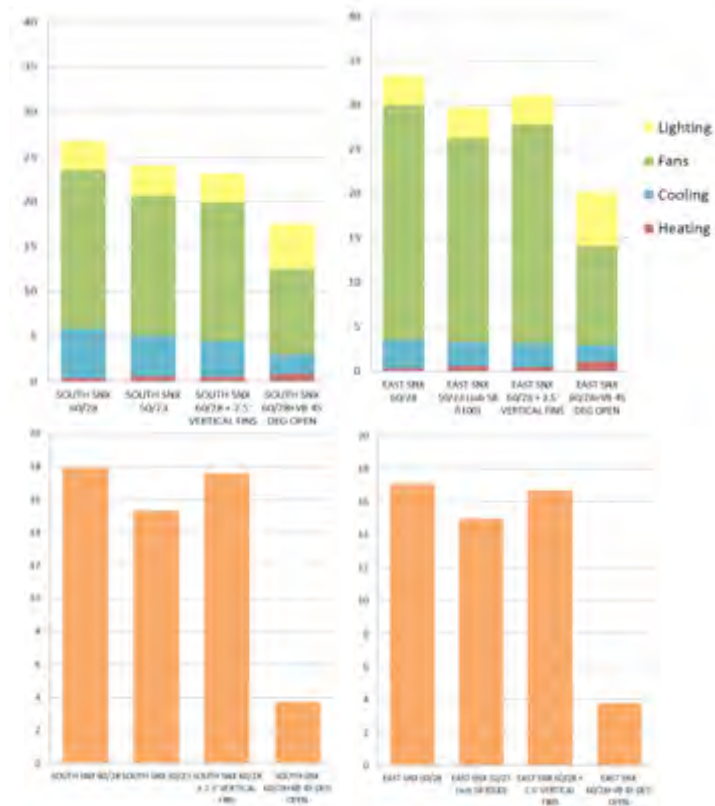


We examine every project with a comprehensive systematic approach to meet the client's sustainability, energy, water and environmental quality goals.

## ADVANCED SIMULATIONS

We provide various advanced computer simulations to study wind patterns, thermal stratification and comfort issues in spaces, building façade studies and energy modeling to aid architects and owners make key decisions during the early stages of design.

- Façade Engineering
- CFD/Wind Studies
- Thermal Stratification Studies
- Energy Concept Studies
- Energy Modeling



FAÇADE LOAD STUDY



URBAN WIND STUDY

# SUSTAINABILITY

## CASE STUDY:

### CONFIDENTIAL CLIENT MISSION BAY HEADQUARTERS San Francisco, CA

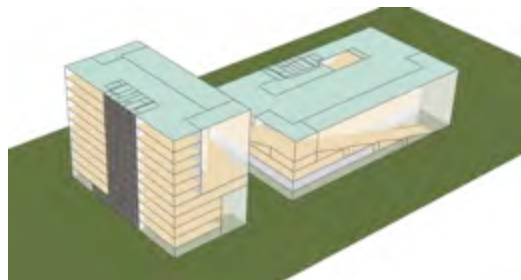
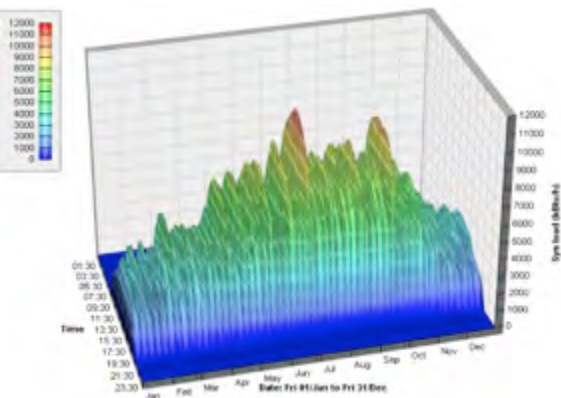
Type: New Campus  
Size: 420k SF

AlfaTech is currently involved in this confidential client's new San Francisco presence which is a new 420,000 square-foot, ground up office building in the Mission Bay area in San Francisco. Our scope of work includes mechanical, electrical, plumbing, technology, security, and sustainability services. AlfaTech assisted the architectural design team with optimizing performance by assessing various utility, façade and wind studies. The project is designed as an innovative, ultra-high performance building that includes a façade that responds to programmatic needs, an underfloor air distribution system, a "winter garden" which acts as the main social space incorporating natural ventilation, and a proposed geothermal system to substantially reduce cooling equipment needs.

AlfaTech has been providing MEP Engineering and Technology services for this client in the US and Globally for ten sites, including the new corporate headquarters in San Francisco. This is a state of the art new campus with over 420k SF of offices, a full kitchen and cafeteria. The project will include evaluation of all available sustainability features.

#### Sustainability goals:

- Significant reduction of building energy cooling needs by the use of geothermal exchange systems
- Aggressive rainwater capture and retention
- Natural ventilation for main atrium social areas, creating a pleasant, open experience for employees and visitors
- Maximize use of daylighting to optimize workspace quality



## CASE STUDY:

### LENNAR CANDLESTICK POINT & HUNTER'S POINT MASTER PLAN San Francisco, CA

*Type:* New Developments

*Size:* 702-Acre New Developments

The Candlestick Point and Hunter Point Shipyard is a 702-acre development that has the potential to bring most dynamic companies into the area and develop whole communities. This area will house R&D facilities, commercial spaces, multi-use buildings and retail spaces. Parks, trails, and open spaces will be additional features that will attract and enhance the community. The new development will add over 10,000 new residential units in the form of condominiums and low-, mid- and high-rise buildings. There will be over a million square feet of commercial space made available, over three million square feet for Research and Development, as well as over 300,000 square feet of property devoted to community activities.

AlfaTech views this holistic approach to community development as an opportunity for Lennar Urban to be at the vanguard of urban design by creating a community infrastructure focused on environmental sustainability, technology, and self-sustaining. This means taking advantage of existing technologies to generate energy with the lowest environmental impact.

We conducted a series of sustainable mechanical studies in a master plan scale to help the owners understand the options available to explore the feasibility of netzero energy for the new development. Proposed strategies involve the following:

- Geothermal heat rejection systems
- High performance chillers and thermal energy storage
- Biodigestion system for heat recovery and energy generation
- Solar photovoltaic array for electricity generation
- Rainwater and graywater capture and treatment



# SUSTAINABILITY

## CASE STUDY:

### DELTA PRODUCTS HEADQUARTERS LEED PLATINUM / NET ZERO Fremont, CA

Type: SF Campus  
Size: 250k SF

Delta Products desired a new headquarters highlighting sustainability and energy efficiency with primary goals to showcase Delta Products' innovation in a state of the art building blending the natural surroundings with sustainable building design.

The Delta Americas Headquarters is a three-story 250,000 SF campus consisting of private offices, administrative, open workspace, conference/auditorium facilities, kitchen/dining areas, labs, office and warehouse. AlfaTech provided sustainable mechanical electrical plumbing engineering design services for this project focusing on the client's desire to maximize natural ventilation and daylighting reduce water and energy consumption with a geothermal central plant and utilize radiant systems for primary space conditioning.

AlfaTech conducted extensive CFD modeling to assist with sizing and locating windows around the building and their integration into a thermal tower ventilation strategy. The project also encompasses a photovoltaic system to balance energy consumption and achieve Net Zero Energy.

Some of the features included are:

- Ground source heat pumps
- Solar energy system
- Natural ventilation
- Active chilled beam
- LED lighting
- Spectrally selective glazing
- Grass and native plants
- Ecological ponds
- EV chargers
- Rainwater harvesting
- Elevator power regeneration systems
- Energy efficient HVAC system
- Energy storage solutions
- Hydronic bidirectional heating/cooling flooring systems







# 03

## MARKETS & Relevant Projects



CORPORATE OFFICE



## UBER

AlfaTech has been providing comprehensive engineering design services for nearly 2M SF for Uber since 2014. This includes:

- MEP Design
- Architectural lighting design
- Architectural Lighting Design
- Rainwater Collection System Design
- PV and Fuel Cell Design
- Technology (Security, IT and A/V) Design
- Commissioning

Following are significant projects completed for Uber.

### UBER / MISSION BAY NEW HEADQUARTERS

San Francisco, California

Type: New site and Two High-Rise Office Buildings  
Size: 420,000 SF (2014-2015)

AlfaTech provided comprehensive engineering and technology design for two new high-rise buildings for Uber's new headquarters.

AlfaTech provided design services for initial master planning and building design. AlfaTech then provided full design, MEP, Technology, PV and fuel cell system design for the full shell/core and tenant improvements. This included administrative office space, full kitchen/cafeteria, daycare and retail space.

### UBER / UPTOWN STATION

Oakland, California

Type: High-Rise Office Building  
Size: 520,000 SF

AlfaTech provided MEP and Technology Engineering Services for his high-rise building in center of the city. AlfaTech provided full design services for site, shell/core and tenant improvements, which included central chiller plant and 12kv high voltage power distribution.

### UBER / 1455 MARKET STREET

San Francisco, CA

Type: Office Tenant Improvements  
(2015-2016)  
Size: 177,000 SF

AlfaTech provided mechanical, electrical and plumbing engineering design service and commissioning for Uber's original headquarters in this downtown high-rise. This project encompassed five floors for a total of 177k SF.

### UBER / 685 MARKET STREET

San Francisco, CA

Type: High-rise offices and full kitchen (2016)  
Size: 154,000 SF

AlfaTech provided mechanical, electrical, and plumbing engineering design service and commissioning for seven floors of this downtown location. This included administrative office space, breakout areas, kitchenettes and conferencing spaces for this Fortune 500 firm.

### UBER / 555 MARKET STREET

San Francisco, CA

Type: High Rise Offices  
Size: 247,000 SF

AlfaTech provided mechanical, electrical, and plumbing engineering design service and commissioning for fifteen floors in this 21-story office building in downtown San Francisco. This project included administrative office space, breakout areas, kitchenettes and conference spaces.



# CORPORATE OFFICE

## LINKEDIN San Francisco, CA

Type: Office  
Size: 450,000 SF

AlfaTech is providing mechanical, electrical and plumbing engineering services for this new ground-up project currently under construction in the heart of SOMA in San Francisco. The project, recently awarded, includes tenant improvements to the 26-story office building located at 222 Second Street.

## LINKEDIN Mountain View, CA

Type: Office  
Size: Approx. 575,000 SF  
Projects:

- Building B: 6 stories, 208,500 SF
- Building C: 6 stories, 208,500 SF
- Building D: 4 stories, 152,600 SF
- Campus Service Building: 5,000 SF

AlfaTech provided mechanical, electrical, plumbing engineering, and lighting design services in support of tenant improvements for three buildings and a campus service building.

## LINKEDIN Sunnyvale, CA

Type: Office  
Size: 576,000 SF

AlfaTech provided mechanical, electrical, plumbing engineering and lighting design services for this new ground-up campus including full cafeteria and multipurpose.

## LINKEDIN New York, NY

Type: Office  
Size: Approx. 80,000 SF

AlfaTech is providing full design for all technology infrastructure, including structured cabling, and AV systems. Facilities included training rooms, all-hands and various sized meeting spaces, and videoconference rooms. Responsibilities included full coordination with the design team, development of technology plans and specifications, facilitation of the bidding process for low voltage and AV sub-contractors and support during construction. AlfaTech developed and continues to maintain the technology standards for LinkedIn that have been used for this and many other projects globally.



# CORPORATE OFFICE

## CONFIDENTIAL HIGH-TECH CLIENT

345 Spear Street, San Francisco, CA

Type: Tenant Improvement

Size: 89,000 SF

MEP services for new 89,000 SF office space on one single floor plate to house this client's first San Francisco presence. AlfaTech provided MEP Bid Documents and subsequent review of the MEP Design-Build Subcontractors' Permit and Construction Drawings.

This project consists of the 6th floor build out, including new 64,000 SF café, remodel of another 8,000 SF Café and 5th floor remodel. This project included video conference rooms, creative break-out spaces, lunch/break areas, and server room.



## CORPORATE OFFICE

### RIVERBED

*San Francisco, CA*

*Type: Office Building*

*Size: 155,833 SF*

AlfaTech provided mechanical, electrical and plumbing engineering design services for this project, which consisted of tenant improvement to floors 2 through 7 for a total of 155,833 SF.

The project included open office workstations, meeting rooms, conference rooms, and cafeteria with warm-up kitchen, IT rooms and support areas.



# CORPORATE OFFICE

## MOTOROLA MOBILITY – LEED SILVER

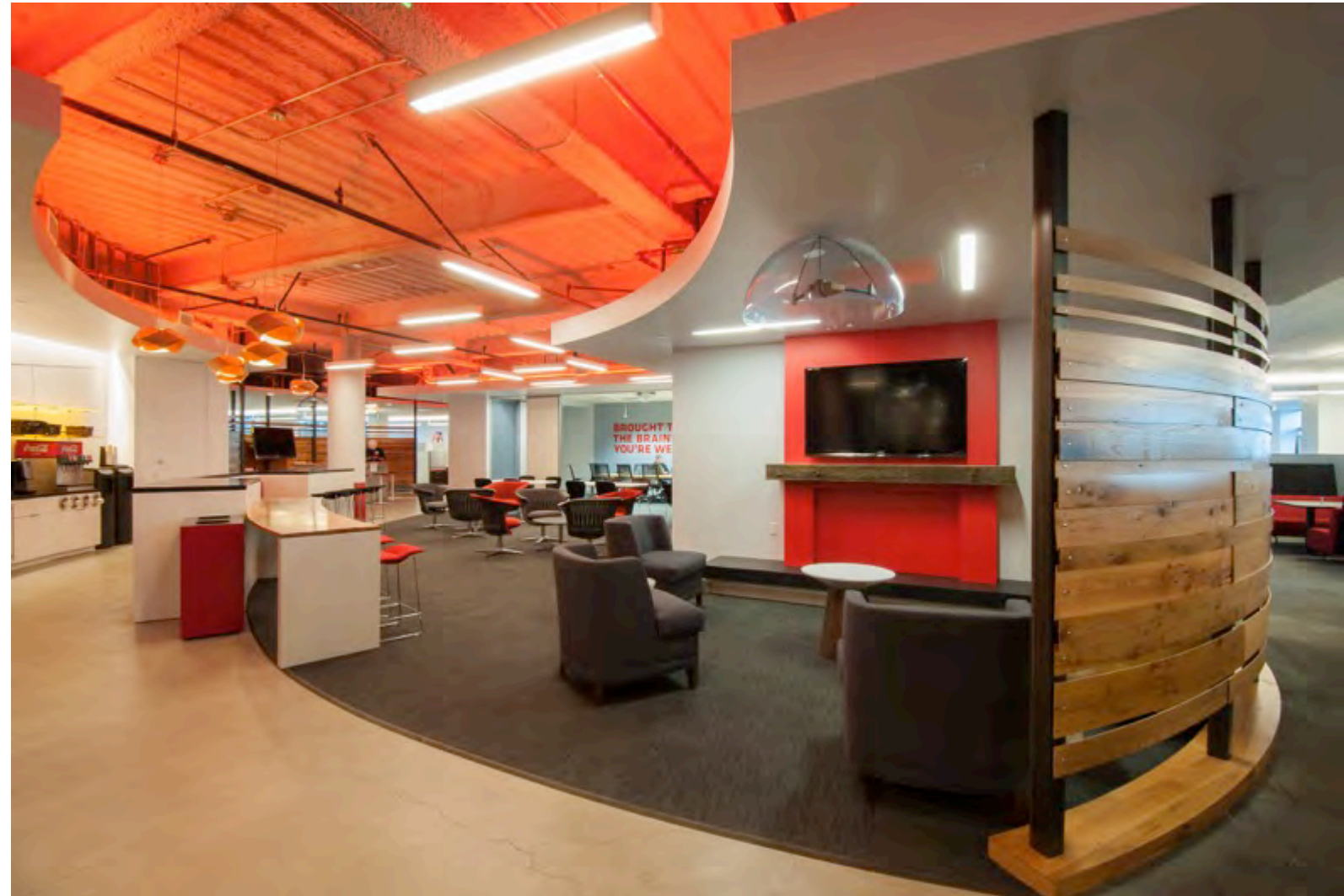
*Moffett Towers, Sunnyvale, CA*

Type: Office

Size: Three floors

AlfaTech provided MEP and fire protection engineering design for this 35,000 SF tenant improvement project. The project included TI's on the 6<sup>th</sup>-8<sup>th</sup> floors, and a new data center on the 1<sup>st</sup> floor.

Our technology team took the lead in providing due diligence of the existing facilities and transferred the information to the programming for the new building; making all necessary technical changes in order to improve the facility from operational and circulation point of view. The project achieved LEED Silver.



# CORPORATE OFFICE

## EBAY

San Jose, CA

Type: Office, Data Center

Size: 109,000 SF

AlfaTech provided full mechanical and electrical upgrades for eBay's "North Campus" which is affiliated with the Corporate Headquarters facility also located in San Jose.

The firm provided engineering design for interior improvements for two 109,000 SF buildings including a 6,000 SF data center and two server rooms for this Fortune 500 Firm.

## EBAY BUILDING 17

San Jose, CA

Type: Campus building

Size: 189,590 SF

AlfaTech provided engineering design services for eBay's newest North Campus 5-story Building 17 in San Jose. This included a new core and shell and tenant improvements.

AlfaTech also prepared electrical infrastructure design for the installation of a roof-mounted 100kW photo-voltaic panel installation. Services included feeder and panel load calculations, code search, electrical plans and coordination with Owner, panel vendors and Contractor to integrate the PV panel system into the 5-story building's electrical power distribution and grounding systems. This project achieved LEED Gold.

LEED  
GOLD



## INTUIT CAMPUS CENTER – LEED GOLD

*Mountain View, CA*

Type: Campus  
Size: 42,000 SF

AlfaTech was selected to provide mechanical, electrical, and plumbing engineering design services for a 42,000 SF office building conversion to a campus center for Intuit.

Amenities include: 15,000 SF cafeteria, 12,000 SF fitness center, 13,000 SF conference center, and 3,000 SF “innovation gallery.” Exterior improvements include a sports court and amphitheater.



## SUNPOWER CORPORATION HEADQUARTERS

*Richmond, CA*

*Type:* Campus

*Size:* 80,000 SF

AlfaTech provided design-build services for the company's expansion into the historic Ford Plant in Richmond, CA. The new facility includes a 65,000 SF manufacturing plant, 180,000 SF office headquarters, and a 30,000 SF R&D facility. Key components of the project include R&D tool installations, manufacturing rack and assembly, and a roof PV plant. Provided project management services during lease and work letter scope definition negotiations with developer's design build team



## ADOBE SYSTEMS HEADQUARTERS

*San Jose, CA*

*Type:* Office

*Size:* Three new buildings, 1,000,000 SF total

Building One: 18-story; 440,000 SF

Building Two: 15-story; 275,000 SF

Building Three: 18-story; 266,000 SF

Now considered a landmark on the San Jose skyline, the Adobe Systems headquarters campus is the daytime home for more than 2,000 employees. Each building has its own parking garage, public lobby, data center, meeting rooms, and mail room. Shared facilities include an auditorium, full-service cafeteria and fitness center. Building Two also features retail space at street level. Additionally, each tower included a data center.

The computer room design consisted of a 7/24 full generator/UPS backup system for HVAC, lighting and power within the room with 100% redundancy.



## CISCO SYSTEMS

*San Jose, Milpitas, Santa Clara, CA, Texas & Amsterdam*

*Type:* Office, R&D, Manufacturing

*Size:*

Site 1: 850,000 SF, eight buildings

Site 2: 600,000 SF, four buildings

Site 3: 315,000 SF, three buildings

Site 4: 3.3 million SF, nineteen buildings

Site 5: 1.2 million SF, five buildings

Cisco selected the firm to provide engineering design services for all five sites comprising their world headquarters campus. These buildings, which range from one to four stories, contain a variety of space types, including data center, office, research and development, engineering labs and testing areas, manufacturing, cafeteria, conference, executive briefing, and a fitness center. The firm has been involved with Cisco both nationally and internationally on projects during various stages of engineering services.

A substantial PG&E energy rebate resulted from our energy-saving mechanical systems designs, the project also won a separate energy award. Site 1 has a manufacturing plant, and a main engineering and MIS data center. Site 2's data center supports Cisco's seven day/twenty-four hour online corporate network connectivity, and the infrastructure was designed to support future engineering lab and bench functions. Site 3 buildings required stringent control of temperature and humidity. For Site 4, the firm also performed studies for site utility alternatives including cogeneration.



# CORPORATE OFFICE

## LATHAM WATKINS, ET AL

*Menlo Park, CA*

*Type:* Law Offices

*Size:* 120,000 SF

AlfaTech provided mechanical, electrical, and plumbing/fire protection engineering and due diligence services for three buildings (40,000 SF each) on a single campus.

The project scope included a review of the existing conditions of the buildings to accommodate a law firm.



# CORPORATE OFFICE

## ORACLE (FORMERLY BEA Systems, Inc.)

*San Francisco, CA, and Denver/Boulder, CO*

*Type:* Office, Computer Lab and Operations Center

*Size:* Over 1,000,000 SF in CA, and 85,000 SF in CO

AlfaTech was contracted by BEA Systems (now Oracle) to provide services on a variety of tenant improvement projects for their San Francisco offices. At 225 Bush, the Standard Oil Building, the firm performed due diligence studies and reports for various floors, and at 235 Montgomery, San Francisco's historic Russ Building, the firm provided engineering design services for this 33,000 SF TI project. These existing spaces will be built out for engineering laboratories, break room areas, conference rooms, open offices, private offices, and special-use rooms. The firm provided engineering design services for BEA's Colorado Operations Center, which consisted of office, conference, labs, IDF and MIS rooms in the Denver and Boulder locations, and which included a UPS system. These projects were tenant improvements within existing buildings.

## LOGITECH

*Newark, CA*

*Type:* Campus relocation

*Size:* 263,500 SF

AlfaTech provided MEP and fire protection engineering services to assist Logitech in relocating their corporate headquarters. The project consisted of the renovation of two 3-story buildings, totaling 263,500 SF (246,500 SF of offices, conference rooms and 17,500 SF of Labs). Designed to meet LEED Silver.



TARGET:  
LEED  
SILVER

# CORPORATE OFFICE

## MORRISON FOERSTER

*San Francisco, CA*

*Type:* Offices

*Size:* 220,000 SF

Approximately 220,000 SF of high end interiors renovation of 27th through 36th floors at 425 Market including multiple private offices, conferencing spaces, administrative space and kitchens.



## LOCKHEED MARTIN MISSILES AND SPACE

*Sunnyvale, CA*

*Type:* Offices, Cafeteria, Clean Room, Model Shop, Motion Simulator Facility

*Size:* Over 1,000,000 SF

*Projects:*

Office B/578 (Model Shop, Office)

Office B/152 (Clean Room, Office)

Office B/576 (Motion Simulator, Office)

Office B/562 (High Bay Access, Office)

Office B/577 and 582 (Publication and Anti-sub Warfare, Office)

Office B/152 (Clean Room, Office)

Office B/153 (Utilities Upgrade, Office)

Office B/156F (Hubble Telescope Clean Room, Office)

Office B/176 (Chemical Storage Facility Consolidation & Renovations, Office)

Office B156A (Critical Power Upgrade, Office)

Office B157 (Computer Lab and Testing Relocation, Office)

For more than 15 years, Lockheed has chosen AlfaTech as the prime design and construction consultant to work on a multitude of high technology projects at their Sunnyvale campus. Although all have been renovation projects, each had their own unique set of criteria and solutions.



# CORPORATE OFFICE

## GILEAD SCIENCES

*Foster City, CA*

*Type:* Laboratory, Office, Manufacturing

*Size:* 500,000 SF

AlfaTech provided MEP and telecommunications design for all of Gilead's campus consisting of 16 buildings including administrative and private offices, development labs, pilot plants and cGMP therapeutic manufacturing / production areas. The firm also provided MEP engineering design services for Gilead's 35,000 SF pilot plant on the Foster City campus as part of a previous project.



## VISA METRO 1, 2 AND 3

*Foster City, CA*

*Type:* Offices

*Size:* 349,000+ SF

AlfaTech completed multiple phases of renovations and interior improvements for the Metro One, Two and Three buildings on Visa's campus, including several floors of office space, the Cafeteria and the Auditorium/Lobby. Services included mechanical, electrical and plumbing engineering, fire protection and construction administration.



# CORPORATE OFFICE

## SYMANTEC

*Springfield, OR*

*Type:* Corporate Campus

AlfaTech was the Engineer of Record for this campus project in Oregon. The project was awarded an Energy Star Award, which identifies this building as one of the most energy efficient buildings in the nation.

## APPLIED MATERIALS

*Santa Clara, CA*

*Type:* Office, Clean Room, Manufacturing, Assembly, Testing

*Size:* 1,000,000+ SF

*Projects:* Buildings B7, B8, B9, B14, B15, B20

Since 1990, the firm has been on Applied Materials' selected prime contractor list, and has provided extensive process/chemical, electrical, and mechanical engineering services for renovations, as well as pre-design and due diligence services.

## BEA SYSTEMS (now Oracle)

*San Jose, San Francisco, Walnut Creek, CA; Denver, CO; Chicago, IL*

*Type:* New Campus - Office, Laboratory, Data Center

*Size:* 400,000+ SF

AlfaTech provided services on various projects for many years. For the Corporate Headquarters in San Jose, the firm designed mechanical and electrical systems for this research and development campus for which master plan consisted of 10 buildings and over 1M SF. For the San Francisco site, we provided MEP engineering services for a new 107,000 SF office space.

## MAXIM INTEGRATED PRODUCTS – LEED GOLD

*San Jose, CA*

*Type:* Corporate Facility Relocation, Renovation

*Size:* 430,000 SF

AlfaTech provided MEP, fire protection/life safety, and technology services, including telecommunications and security systems, to assist Maxim in relocating and renovating their corporate campus at 160 Rio Robles in San Jose, CA.

## ELECTRONICS FOR IMAGING

*Foster City, CA*

*Type:* Office, R&D, Laboratory, Food Center, Garage

*Size:* 1,000,000 SF

AlfaTech provided overall engineering design when EFI relocated to a 35-acre waterfront site, where they occupied a new, ten-story, 295,000 SF building, the first to be completed in a four-phase campus development plan which incorporated five buildings and a parking structure for 1,100 cars. A substantial PG&E energy rebate was given to the owner for energy-savings due to our mechanical system design.

## ADVANCED MICRO DEVICES

*Sunnyvale, CA*

*Type:* Corporate Campus: Offices, Data Center, Clean Rooms

*Size:* 1,000,000+ SF

AlfaTech provided MEP design for many new buildings and renovations. This included offices, clean rooms, data centers, and a new 50,000 SF Commons Building dedicated solely to conference, food service, dining and fitness activities, as part of a consolidation of AMD's headquarters, R&D and manufacturing.

## LSI LOGIC

*Gresham, OR*

*Type:* Office, Wafer Fab, Central Plant

*Size:* 327,000 SF

LSI Logic's Gresham campus features a 200mm wafer fabrication plant, an office building, engineering and testing areas, a central computer room, cafeteria, and central plant. The complex has 12 kV power distribution with dual feed, 4160V power distribution for utility loads. Services also included electrical and lighting plans, process equipment load coordination, building/site grounding plan, and an isolated grounding plan for the computer room.

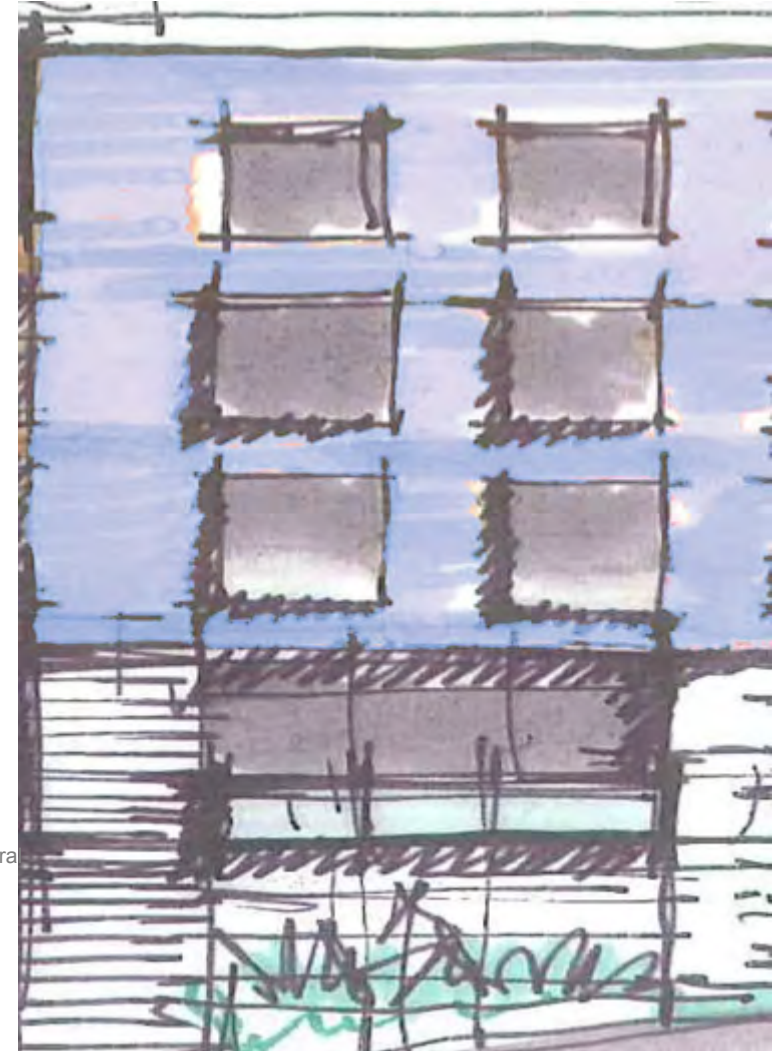
## LINKEDIN

*Sunnyvale, CA*

*Type:* Office

*Size:* 576,000 SF

AlfaTech provided mechanical, electrical, plumbing engineering and lighting design services for this new ground-up campus including full cafeteria and multipurpose.





INNOVATIVE IDEAS | INTEGRATED SOLUTIONS | SUSTAINABLE PARTNERS

## LOS ANGELES

355 S. Grand Avenue, # 1605  
Los Angeles, CA 90071

213.212.9860

## SAN JOSE

1321 Ridder Park Drive, Suite 50  
San Jose, CA 95131

408.487.1200

## SAN FRANCISCO

One Post Street, Suite 2200  
San Francisco, CA 94104

415.403.3000