

Two Component Dispensing

Polyurethanes

Silicones

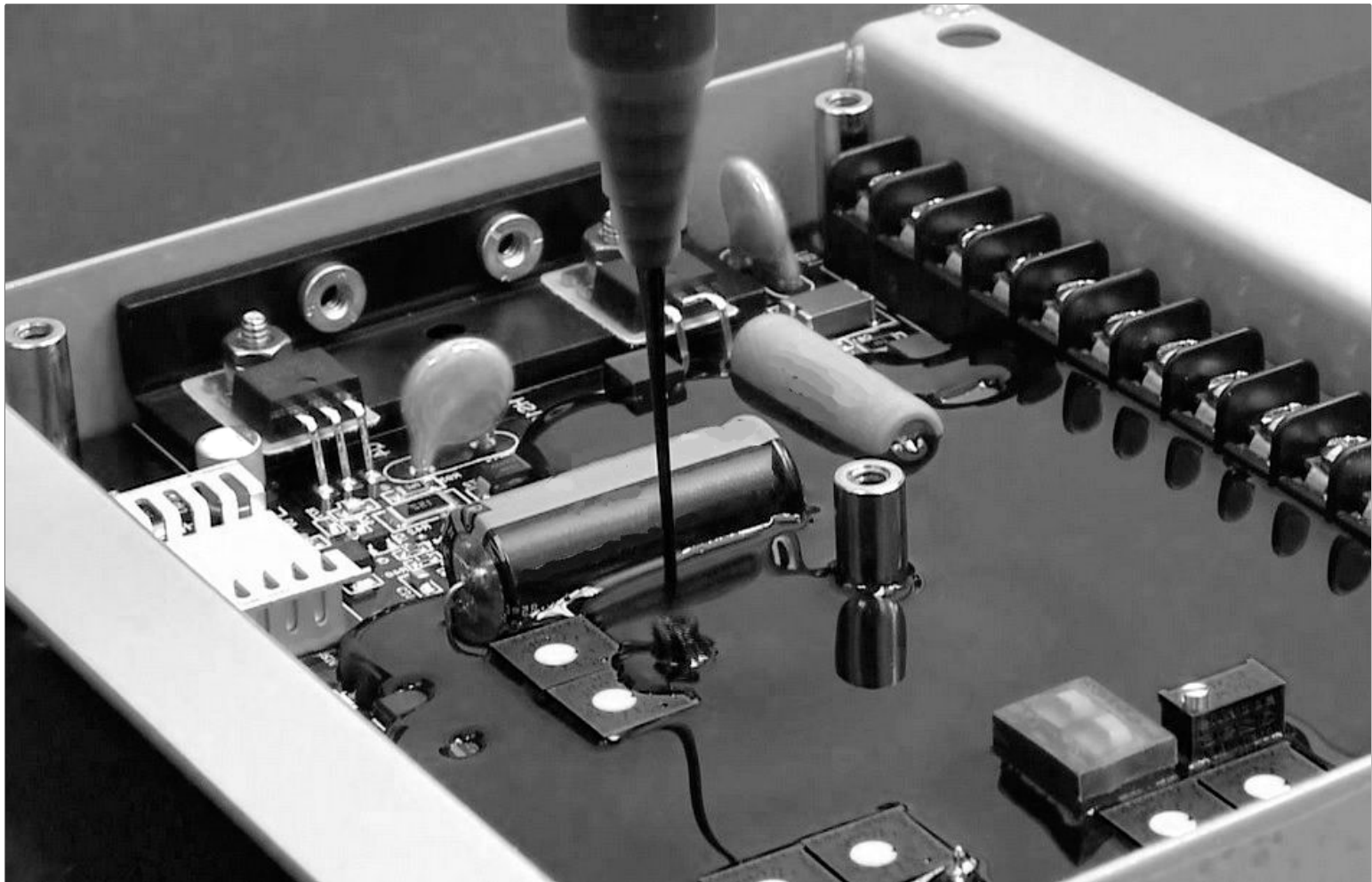
Resins

Epoxies

Potting Compounds

Sealants

A range of products for mixing and dispensing two-component materials from cartridges and syringes. Bench top dispensing systems for making repeat deposits. Hand held air, manual or battery operated cartridge guns. Industrial dual cartridges, static mixer nozzles, luer lock fittings and accessories. Techkit plastic mixer cartridges for any mix ratio materials. Industrial grade dispensing solutions for precise control.



Adhesive Dispensing Ltd

Solutions customers stick with...

Manual Dual Cartridge Gun 50ml



Code	Size	Colour	Gun Type	Type	Mix Ratio:	Length	Weight
ABM-25M1	50ml	Grey	Manual	Square	1:1/2:1	195mm	0.200kg
ABM-25MB	50ml	Black	Manual	Square	1:1/2:1	195mm	0.200kg
ABM-25M4	50ml	Grey	Manual	Square	4:1	195mm	0.200kg
ABM-25M10	50ml	Grey	Manual	Square	10:1	195mm	0.200kg
ABM-25M10R	50ml	Grey	Manual	Oval	10:1	195mm	0.200kg

Cartridges slot into the top of the gun and are secured by a latch. Oval shape (round-back) is specific to the top of the cartridge.

Pneumatic Dual Cartridge Gun 50ml



Code	Size	Colour	Gun Type	Type	Mix Ratio:	Length	Weight
ADCBA-25D	50ml	Black/Silver	Pneumatic	Square	1:1	328mm	0.720kg

Cartridges slide into the hinged retainer. These guns are rod driven. Adjustable regulator for flow control. Reverse rod mode for cartridge change. Lightweight balanced applicator gun.

Pneumatic Dual Cartridge Gun 50ml



Code	Size	Colour	Gun Type	Type	Mix Ratio:	Length	Weight
EDS408M	50ml	Black/Silver	Pneumatic	Square	1:1/2:1/4:1/10:1	320mm	0.720kg

Cartridges slide into the hinged retainer. These guns are rod driven. Adjustable regulator for flow control. Reverse rod mode for cartridge change. Disc end change to switch ratios. Multi ratio gun.

Battery Dual Cartridge Gun 50ml



Code	Size	Colour	Gun Type	Type	Mix Ratio:	Length	Weight
ADCBE-50	50ml	Black/Silver	Battery	Square	1:1/2:1	355mm	1.6kg
ADCBE-50-4	50ml	Black/Silver	Battery	Square	4:1	355mm	1.6kg
ADCBE-50-10	50ml	Black/Silver	Battery	Square	10:1	355mm	1.6kg
ADCBE-50R	50ml	Black/Silver	Battery	Oval	10:1	355mm	1.6kg

Cartridges slide into the metal retainer. These guns are rod driven. Adjustable speed control. Rod can be reversed for cartridge change. Disc end change to switch ratios. 10.8v rechargeable lithium-ion battery. Dosing system allows a repeat deposit to be made for consistency. Shot sizes of 3g to 25g. 1.5kN torque. 100% charge time of 30 minutes. Maximum speed of 2.5mm/second.

200ml Dual Cartridge Guns

Manual Dual Cartridge Gun 200ml

Code	Size	Colour	Gun Type	Mix Ratio:	Length	Weight
BG200-1	200ml	Green	Manual	1:1/2:1/4:1/10:1	315mm	1.9kg



Cartridges slot into the side of the gun and are secured by the nozzle nut. Switching between the different mix ratio cartridges is by changing the rod discs supplied. Versatile and low cost dispensing gun. Snap-in, snap-out disc change. For all 200ml dual cartridge ratios.

Manual Dual Cartridge Gun 200ml

Code	Size	Colour	Gun Type	Mix Ratio:	Length	Weight
DM200-01	200ml	Grey	Manual	1:1/2:1	360mm	1.3kg
DM200-04	200ml	Grey	Manual	4:1	360mm	1.3kg
DM200-10	200ml	Grey	Manual	10:1	360mm	1.3kg



Cartridges slot into the top of the gun. The rod is pulled back by pressing a lever. This range of guns are lightweight.

Pneumatic Dual Cartridge Gun 200ml

Code	Size	Colour	Gun Type	Mix Ratio:	Length	Weight
CG200-1	200ml	Black	Pneumatic	1:1/2:1	535mm	1.9kg
CG200-2	200/400ml	Black	Pneumatic	1:1/2:1	535mm	1.9kg
CG200-3	200ml	Black	Pneumatic	1:1/2:1/4:1/10:1	535mm	1.9kg
CG200-4	200/400ml	Black	Pneumatic	1:1/2:1/4:1/10:1	535mm	1.9kg



Cartridges slot into the side of the gun and are secured by the nozzle nut. Switching between the different mix ratio cartridges is by changing the rod discs supplied. An adjustable regulator knob allows flow rate to be set. Nominal thrust of 484 lbs. Snap-in, snap-out disc change.

Pneumatic Dual Cartridge Gun 200ml

Code	Size	Colour	Gun Type	Mix Ratio:	Length	Weight
DP200-70-01	200ml	Black	Pneumatic	1:1/2:1	850mm	1.6kg
DP200-70-04	200/ml	Black	Pneumatic	1:1/2:1	850mm	1.6kg
DP200-70-10	200ml	Black	Pneumatic	10:1	850mm	1.6kg



Cartridges slot into the top of the gun and are secured by the nozzle nut. These are the lightest guns available for 200ml sized dual cartridges. An adjustable regulator knob allows flow rate to be set.

Manual Dual Cartridge Gun 400ml



Code	Size	Colour	Gun Type	Mix Ratio:	Length	Weight
BG400-1	400ml	Green	Manual	1:1/2:1/4:1/10:1	345mm	1.9kg

Cartridges slot into the side of the gun and are secured by the nozzle nut. Switching between the different mix ratio cartridges is by changing the rod discs supplied. Versatile and low cost dispensing gun. One gun suits all type cartridges. Snap-in, snap-out disc change.

Manual Dual Cartridge Gun 400ml



Code	Size	Colour	Gun Type	Mix Ratio:	Length	Weight
DM400-01	400ml	Grey	Manual	1:1/2:1	360mm	1.4kg
DM400-04	400ml	Grey	Manual	4:1	360mm	1.4kg
DM400-10	400ml	Grey	Manual	10:1	360mm	1.4kg

Cartridges slot into the top of the gun. The rod is pulled back by pressing a lever. This range of guns are lightweight.

Pneumatic Dual Cartridge Gun 400ml



Code	Size	Colour	Gun Type	Mix Ratio:	Length	Weight
CG400-1	400ml	Black	Pneumatic	1:1/2:1	535mm	1.9kg
CG400-2	400ml	Black	Pneumatic	1:1/2:1/4:1/10:1	535mm	1.9kg

Cartridges slot into the side of the gun and are secured by the nozzle nut. Switching between the different mix ratio cartridges is by changing the rod discs supplied. An adjustable regulator knob allows flow rate to be set. Nominal thrust of 1100 lbs. Snap-in, snap-out disc change.

Pneumatic Dual Cartridge Gun 400ml



Code	Size	Colour	Gun Type	Mix Ratio:	Length	Weight
DP400-70-01	400ml	Black	Pneumatic	1:1/2:1	850mm	2.3kg
DP400-70-04	400/ml	Black	Pneumatic	1:1/2:1	850mm	2.3kg
DP400-70-10	400ml	Black	Pneumatic	10:1	850mm	2.3kg

Cartridges slot into the top of the gun and are secured by the nozzle nut. These are the lightest guns available for 400ml sized dual cartridges. An adjustable regulator knob allows flow rate to be set.

Battery Dual Cartridge Gun 400ml



Code	Size	Gun Type	Mix Ratio:	Length	Weight
DP2-400-50-100	400ml	Battery	1:1	550mm	3.5kg
DP2-400-50-200	400ml	Battery	2:1	550mm	3.5kg
DP2-400-50-300	400ml	Battery	4:1	550mm	3.5kg
DP2-400-50-400	400ml	Battery	10:1	550mm	3.5kg

Charge time 45 minutes (80%). 10.8V Ah Lion battery. 4.5mm/ second speed. Memory setting for repeat deposits.

Other Dual Cartridge Guns

Manual Dual Cartridge Gun 300ml

Code	Size	Colour	Gun Type	Mix Ratio:	Length	Weight
BG300-1	300ml	Green	Manual	1:1/2:1	320mm	1.5kg
BG300-10	300ml	Green	Manual	10:1	320mm	1.5kg

BG300-7 for cartridge sizes 150ml x 150ml (1:1), 150ml x 75ml (2:1). BG300-10 for 10:1 ratio only. Snap-in, snap out disc change.



Manual Dual Cartridge Gun 150ml/ 300ml

Code	Size	Colour	Gun Type	Mix Ratio:	Length	Weight
BG300-5	150ml/300ml	Black	Manual	1:1/2:1	340mm	1.4kg

For cartridge sizes 150ml x 150ml (1:1), 150ml x 75ml (2:1), 75ml x 75ml. Snap-in, snap out disc change.



Manual Dual Cartridge Gun 300ml/ 600ml

Code	Size	Colour	Gun Type	Mix Ratio:	Length	Weight
BG3600-1	300/600ml	Red	Manual	1:1/ 2:1	375mm	1.5kg

For cartridge sizes 300ml x 300ml (1:1), 300ml x 150ml (2:1). 150ml x 150ml (1:1), 150ml x 75ml (2:1). Snap-in, snap out disc change.



Manual Coaxial Cartridge Gun 380ml

Code	Size	Colour	Gun Type	Mix Ratio:	Length	Weight
BG680-1	380ml	Red	Manual	10:1	325mm	1.3kg

For cartridge size 380ml 10:1 ratio only. Coaxial cartridges are a single tube.



Manual Dual Cartridge Gun 600ml

Code	Size	Colour	Gun Type	Mix Ratio:	Length	Weight
BG600-1	600ml	Green	Manual	1:1/ 2:1	395mm	1.5kg

For cartridge sizes 300ml x 300ml (1:1), 300ml x 150ml (2:1). Snap-in, snap out disc change.



Manual Dual Cartridge Gun 750ml

Code	Size	Colour	Gun Type	Mix Ratio:	Length	Weight
BG750-2	750ml	Green	Manual	7.5:1/ 5:1	375mm	1.5kg

BG750-2 for cartridge sizes 750ml x 100ml, 750ml x 150ml. BG750-10 for 750ml 10:1 ratio only. Snap-in, snap out disc change.




Manual Dual Cartridge Gun 1200ml

Code	Size	Colour	Gun Type	Mix Ratio:	Length	Weight
BG750-2	750ml	Green	Manual	1:1/ 2:1	375mm	1.5kg

For cartridge sizes 600ml x 600ml, 600ml x 300ml. Snap-in, snap out disc change.



A System Dual Cartridge 50ml

	Code	Size	Colour	Mix Ratio	Material	Nozzle Type
	451000	50ml	White	1:1	Polypro	Bayonet
	452013	50ml	White	2:1	Polypro	Bayonet
	454000	50ml	White	4:1	Polypro	Bayonet
	454010	50ml	White	10:1	Polypro	Bayonet

Set includes moulded cartridge, dual wiper pistons and nozzle cap.

A System Mixer Nozzles Bayonet Type

	Code	ID	Elements	Length	Mix Ratio	Volume	Colour
	MA3.0-07S	3mm	7	34mm	1:1/2:1	0.24ml	White
	MA3.0-13S	3mm	13	51mm	1:1/2:1	0.26ml	White
	MA3.0-17S	3mm	17	63mm	1:1/2:1	0.30ml	White
	MA4.0-13D	4mm	13	62mm	1:1/2:1	0.60ml	White
	MA4.0-13S	4mm	13	66mm	1:1/2:1	0.60ml	White
	MA4.0-17D	4mm	17	78mm	1:1/2:1	0.75ml	White
	MA4.0-17S	4mm	17	82mm	1:1/2:1	0.80ml	White
	MA5.4-07T	5.4mm	7	56mm	1:1/2:1	0.80ml	White
	MA5.4-13D	5.4mm	13	79mm	1:1/2:1	1.36ml	White
	MA5.4-13T	5.4mm	13	85mm	1:1/2:1	1.40ml	White
	MA5.4-17T	5.4mm	17	104mm	1:1/2:1	1.68ml	White
	MA5.4-21T	5.4mm	21	124mm	1:1/2:1	2.01ml	White
<i>Codes with "D" indicate straight tip. "T" is a stepped tip end. "S" is a tapered tip end. "L" is a luer lock end.</i>	MA6.3-12D	6.3mm	12	86mm	1:1/2:1	2.08ml	White
	MA6.3-12T	6.3mm	12	97mm	1:1/2:1	2.10ml	White
	MA6.3-17T	6.3mm	17	128mm	1:1/2:1	2.90ml	White
	MA6.3-21L	6.3mm	21	151mm	1:1/2:1	3.33ml	White
	MA6.3-21T	6.3mm	21	153mm	1:1/2:1	3.57ml	White
	MAHX04-17S	4mm	17	82mm	4:1/10:1	0.80ml	Orange
	MAHX05-17T	5.4mm	17	103mm	4:1/10:1	1.68ml	Orange
	MAQ05-16L	5.3mm	16	83mm	1:1/2:1	1.30ml	Green
	MAQ05-24L	5.3mm	24	115mm	1:1/2:1	1.90ml	Green

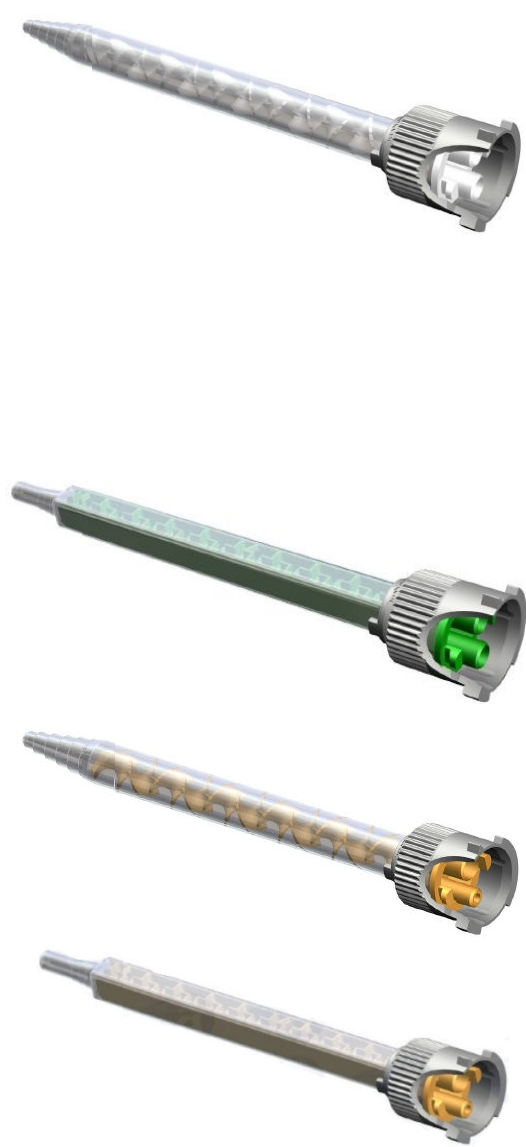
B System Dual Cartridge 25ml/ 50ml

	Code	Size	Colour	Mix Ratio	Material	Nozzle Type
	116647	25ml	White	1:1	Polypro	Grey Cap
	116649	25ml	White	1:1	Polyamide	Grey Cap
	116924	25ml	White	1:1	Polypro	Grey Cap
Set includes moulded cartridge, dual wiper pistons, plunger rod and nozzle cap.						
	Code	Size	Colour	Mix Ratio	Material	Nozzle Type
	112511	50ml	White	1:1	Polypro	Grey Cap
	116357	50ml	White	1:1	Polyamide	Grey Cap
	114099	50ml	White	2:1	Polypro	Grey Cap
	116354	50ml	White	2:1	Polyamide	Grey Cap
	116421	50ml	White	4:1	Polypro	Grey Cap
	116422	50ml	White	4:1	Polyamide	Grey Cap
	116423	50ml	White	10:1	Polypro	Grey Cap
	116424	50ml	White	10:1	Polyamide	Grey Cap
	116373	50ml	White	10:1	PBT	Grey Cap
	116373	50ml	White	10:1	Polypro	Grey Cap
	116449	75ml	White	10:1	Polypro	Grey Cap

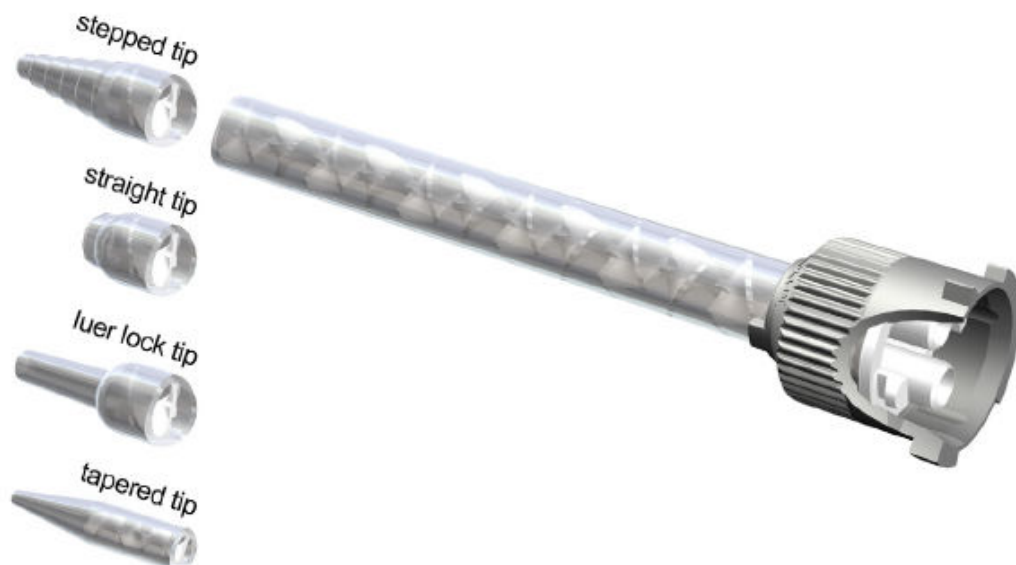
Set includes moulded cartridge, dual wiper pistons and nozzle cap.

B System Mixer Nozzles

Code	ID	Elements	Length	Mix Ratio	Volume	Colour
MBH03-12D	3mm	12	58mm	1:1/2:1	0.49ml	White
MBH03-12S	3mm	12	63mm	1:1/2:1	0.49ml	White
MBH03-16D	3mm	16	71mm	1:1/2:1	0.63ml	White
MBH03-16L	3mm	16	76mm	1:1/2:1	0.63ml	White
MBH03-16S	3mm	16	77mm	1:1/2:1	0.60ml	White
MBH04-12D	4mm	12	70mm	1:1/2:1	0.84ml	White
MBH04-16D	4mm	16	87mm	1:1/2:1	1.04ml	White
MBH04-16S	4mm	16	96mm	1:1/2:1	1.20ml	White
MBH05-06T	5.4mm	6	59mm	1:1/2:1	0.94ml	White
MBH05-12D	5.4mm	12	82mm	1:1/2:1	1.52ml	White
MBH05-14D	5.4mm	14	112mm	1:1/2:1	1.91ml	White
MBH05-16T	5.4mm	16	111mm	1:1/2:1	2.10ml	White
MBH05-20T	5.4mm	20	133mm	1:1/2:1	2.40ml	White
MBH06-11D	6.5mm	11	89mm	1:1/2:1	2.28ml	White
MBH06-16T	6.5mm	16	131mm	1:1/2:1	3.10ml	White
MBH06-20T	6.5mm	20	157mm	1:1/2:1	3.90ml	White
MBH07-11D	7.5mm	11	92mm	1:1/2:1	3.05ml	White
MBQ05-16L	5.3mm	16	91mm	1:1/2:1	1.88ml	Green
MBQ05-24L	5.3mm	24	122mm	1:1/2:1	2.60ml	Green
MBHX03-16S	3mm	16	77mm	4:1/10:1	0.60ml	Orange
MBHX04-16D	4mm	16	87mm	4:1/10:1	1.05ml	Orange
MBHX04-16S	4mm	16	96mm	4:1/10:1	1.20ml	Orange
MBHX05-12D	5.4mm	12	83mm	4:1/10:1	1.52ml	Orange
MBHX05-16T	5.4mm	16	111mm	4:1/10:1	2.10ml	Orange
MBHX05-20T	5.4mm	20	133mm	4:1/10:1	2.40ml	Orange
MBHX06-16D	6.5mm	16	131mm	4:1/10:1	3.10ml	Orange
MBHX06-16T	6.5mm	16	131mm	4:1/10:1	3.04ml	Orange
MBHX06-20T	6.5mm	20	157mm	4:1/10:1	3.79ml	Orange
MBQX05-16L	5.3mm	16	91mm	4:1/10:1	1.72ml	Orange
MBQX05-24L	5.3mm	24	122mm	4:1/10:1	2.37ml	Orange



Codes with "D" indicate straight tip. "T" is a stepped tip end. "S" is a tapered tip end and "L" is a luer lock end.





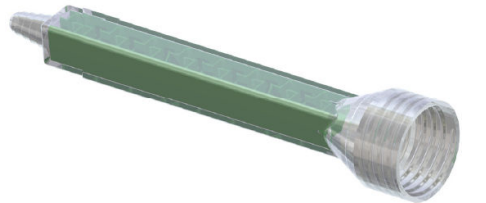
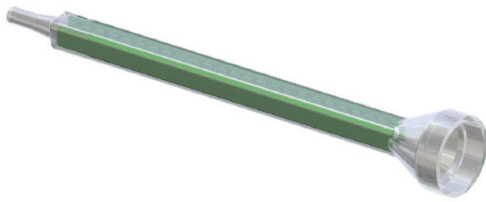
C System Dual Cartridge 200ml/ 400ml/ 600ml



Set includes moulded cartridge, dual wiper pistons, plunger rod and nozzle cap.

Code	Size	Colour	Mix Ratio	Material	Nozzle Type
422026	200ml	White	1:1	Polypro	Bell Mouth
422001	200ml	White	2:1	Polypro	Bell Mouth
422401	200ml	White	4:1	Polypro	Bell Mouth
422033	200ml	White	10:1	Polypro	Bell Mouth
400011	400ml	White	1:1	Polypro	Bell Mouth
400021	400ml	White	2:1	Polypro	Bell Mouth
400041	400ml	White	4:1	Polypro	Bell Mouth
400101	400ml	White	10:1	Polypro	Bell Mouth
600011	600ml	White	1:1	Polypro	Bell Mouth

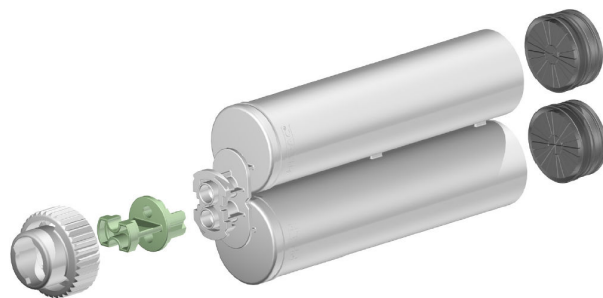
C System Mixer Nozzles



Code	ID	Elements	Length	Mix Ratio	Volume	Colour
MC03-08T	3mm	8	38mm	1:1/2:1	0.19ml	White
MC05-18T	5mm	18	122mm	1:1/2:1	2.10ml	White
MC05-24T	5mm	24	150mm	1:1/2:1	2.30ml	White
MC05-32T	5mm	32	188mm	1:1/2:1	2.60ml	White
MC06-18T	6mm	18	150mm	1:1/2:1	3.60ml	White
MC06-24T	6mm	24	187mm	1:1/2:1	4.20ml	White
MC06-32T	6mm	32	234mm	1:1/2:1	5.00ml	White
MC08-18T	8mm	18	178mm	1:1/2:1	6.70ml	White
MC08-24T	8mm	24	225mm	1:1/2:1	8.50ml	White
MC08-32T	8mm	32	287mm	1:1/2:1	10.90ml	White
MC10-18T	10mm	18	215mm	1:1/2:1	12.30ml	White
MC10-20D	10mm	20	215mm	1:1/2:1	12.60ml	White
MC10-24D	10mm	24	257mm	1:1/2:1	15.30ml	White
MC10-24T	10mm	24	277mm	1:1/2:1	14.60ml	White
MC10-32T	10mm	32	352mm	1:1/2:1	17.70ml	White
MC13-12T	13mm	12	170mm	1:1/2:1	14.70ml	White
MC13-18T	13mm	18	232mm	1:1/2:1	21.00ml	White
MC13-24T	13mm	24	294mm	1:1/2:1	27.30ml	White
MC13-32T	13mm	32	379mm	1:1/2:1	35.70ml	White
MCHX08-18T	8mm	18	183mm	4:1/10:1	6.40ml	Orange
MCHX08-24T	8mm	24	231mm	4:1/10:1	9.30ml	Orange
MCHX10-12T	10mm	12	157mm	4:1/10:1	9.60ml	Orange
MCHX10-18T	10mm	18	216mm	4:1/10:1	11.90ml	Orange
MCHX10-24T	10mm	24	276mm	4:1/10:1	16.20ml	Orange
MCHX13-12T	13mm	12	192mm	4:1/10:1	11.60ml	Orange
MCQ05-24L	5.3mm	24	127mm	1:1/2:1	3.46ml	Green
MCQ07-24T	7.5mm	24	130mm	1:1/2:1	6.19ml	Green
MCQ08-24T	8.7mm	24	147mm	1:1/2:1	8.44ml	Green
MCQ08-32T	8.7mm	32	186mm	1:1/2:1	10.37ml	Green
MCQ10-24T	10.7mm	24	172mm	1:1/2:1	14.04ml	Green
MCQ10-32T	10.7mm	32	220mm	1:1/2:1	18.45ml	Green
MGQ08-18T	8.7mm	18	129mm	ALL	6.70ml	Green
MGQ08-20D	8.7mm	20	142mm	ALL	7.57ml	Green
MGQ08-20T	8.7mm	20	142mm	ALL	7.34ml	Green
MGQ08-24D	8.7mm	24	161mm	ALL	8.61ml	Green
MGQ08-24T	8.7mm	24	161mm	ALL	8.76ml	Green
MGQ10-16D	10.7mm	16	158mm	ALL	12.69ml	Green
MGQ10-19D	10.7mm	19	158mm	ALL	12.15ml	Green
MGQ10-24D	10.7mm	24	187mm	ALL	14.49ml	Green

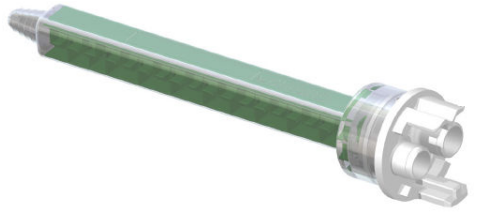
F System Dual Cartridge 200ml/ 400ml

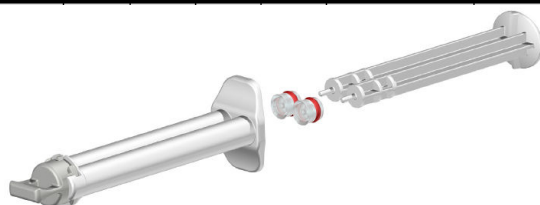
Code	Size	Colour	Mix Ratio	Material	Nozzle Type
112390	200ml	White	1:1	Polypro	Dual Hole Cap
112391	200ml	White	1:1	PA	Dual Hole Cap
112398	200ml	White	2:1	Polypro	Dual Hole Cap
112400	200ml	White	2:1	PA	Dual Hole Cap
112393	200ml	White	4:1	Polypro	Dual Hole Cap
116319	200ml	White	4:1	PA	Dual Hole Cap
112402	200ml	White	10:1	Polypro	Dual Hole Cap
116053	200ml	White	10:1	PA	Dual Hole Cap
112410	400ml	White	1:1	Polypro	Dual Hole Cap
128011	400ml	White	1:1	PA	Dual Hole Cap
112407	400ml	White	2:1	Polypro	Dual Hole Cap
112408	400ml	White	2:1	PA	Dual Hole Cap
112397	400ml	White	4:1	Polypro	Dual Hole Cap
116140	400ml	White	4:1	PA	Dual Hole Cap
113745	400ml	White	10:1	Polypro	Dual Hole Cap
116089	400ml	White	10:1	PA	Dual Hole Cap



Set includes moulded cartridge, dual wiper pistons, plunger rod and nozzle cap.

F System Mixer Nozzles

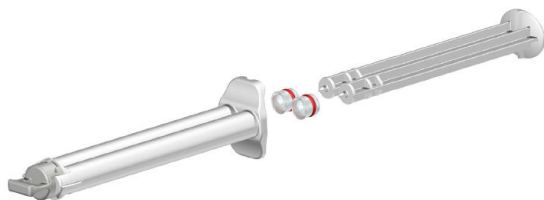
	Code	ID	Elements	Length	Mix Ratio	Volume	Colour
	MFH06-18T	6mm	18	156mm	1:1/2:1	4.36ml	White
	MFH06-24T	6mm	24	194mm	1:1/2:1	5.40ml	White
	MFH06-32T	6mm	32	245mm	1:1/2:1	6.65ml	White
	MFH08-18T	8mm	18	178mm	1:1/2:1	6.70ml	White
	MFH08-24T	8mm	24	234mm	1:1/2:1	9.30ml	White
	MFH08-32T	8mm	32	297mm	1:1/2:1	11.85ml	White
	MFH10-18T	10mm	18	224mm	1:1/2:1	13.09ml	White
	MFH10-24T	10mm	24	283mm	1:1/2:1	16.89ml	White
	MFH10-32T	10mm	32	362mm	1:1/2:1	21.94ml	White
	MFHX06-18T	6mm	18	156mm	4:1/10:1	4.16ml	Orange
	MFHX06-24T	6mm	24	194mm	4:1/10:1	5.20ml	Orange
	MFHX06-32T	6mm	32	245mm	4:1/10:1	6.56ml	Orange
	MFHX08-18T	8mm	18	187mm	4:1/10:1	7.28ml	Orange
	MFHX08-24T	8mm	24	234mm	4:1/10:1	9.14ml	Orange
	MFHX08-32T	8mm	32	296mm	4:1/10:1	11.55ml	Orange
	MFHX10-18T	10mm	18	224mm	4:1/10:1	12.96ml	Orange
	MFHX10-24T	10mm	24	283mm	4:1/10:1	16.70ml	Orange
	MFHX10-32T	10mm	32	363mm	4:1/10:1	21.22ml	Orange
	MFQ05-16L	5.3mm	16	100mm	1:1/2:1	2.90ml	Green
	MFQ05-24L	5.3mm	24	132mm	1:1/2:1	3.52ml	Green
	MFQ07-24T	7.5mm	24	137mm	1:1/2:1	6.11ml	Green
	MFQ08-24T	8.7mm	24	155mm	1:1/2:1	8.69ml	Green
	MFQ10-24T	10.7mm	24	181mm	1:1/2:1	14.75ml	Green
		MFQX05-16L	5.3mm	16	101mm	4:1/10:1	3.07ml
MFQX05-24L		5.3mm	24	132mm	4:1/10:1	3.69ml	Orange
MFQX07-24T		7.5mm	24	137mm	4:1/10:1	6.28ml	Orange
MFQX08-24T		8.7mm	24	155mm	4:1/10:1	8.86ml	Orange
MFQX10-24T		10.7mm	24	181mm	4:1/10:1	14.92ml	Orange



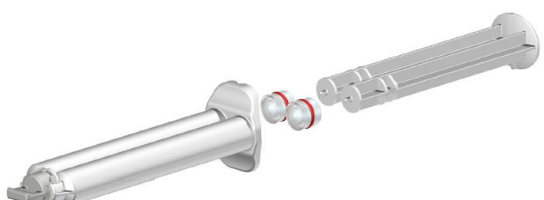
Code	Size	Colour	Mix Ratio	Material	Included
116436	2.5ml	White	1:1	Polypro	Syringe, Lip Seal Piston, Grey Cap Dust, without plunger
116437	2.5ml	White	1:1	Polypro	Syringe, Silicone O-Ring Piston, Grey Cap Dust, without plunger
103128	2.5ml	White	1:1	Polyethylene	Plunger Only



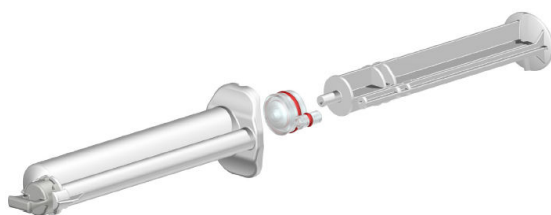
Code	Size	Colour	Mix Ratio	Material	Included
301634	3ml	Clear	1:1	Polypro	Syringe, Plunger Rod, Nozzle



Code	Size	Colour	Mix Ratio	Material	Included
116438	5ml	White	1:1	Polypro	Syringe, Lip Seal Piston, Grey Cap Dust, without plunger
116439	5ml	White	1:1	Polypro	Syringe, Silicone O-Ring Piston, Grey Cap Dust, without plunger
113403	5ml	White	1:1	Polyethylene	Plunger Only



Code	Size	Colour	Mix Ratio	Material	Included
116440	10ml	White	1:1	Polypro	Syringe, Lip Seal Piston, Grey Cap Dust, without plunger
116441	10ml	White	1:1	Polypro	Syringe, Silicone O-Ring Piston, Grey Cap Dust, without plunger
113401	10ml	White	1:1	Polyethylene	Plunger Only



Code	Size	Colour	Mix Ratio	Material	Included
116442	10ml	White	10:1	Polypro	Syringe, Lip Seal Piston, Grey Cap Dust, without plunger
116435	10ml	White	10:1	Polypro	Syringe, Silicone O-Ring Piston, Grey Cap Dust, without plunger
116571	10ml	White	10:1	PBT	Syringe, Lip Seal Piston, Grey Cap Dust, without plunger
113371	10ml	White	10:1	Polyethylene	Plunger Only



Code	ID	Elements	Length	Mix Ratio	Volume	Colour	Outlet
114252	2.5mm	8	33.4mm	1:1/2:1	0.14ml	Grey	Straight
114246	2.5mm	8	39.7mm	1:1/2:1	0.19ml	Grey	Tapered
114253	2.5mm	12	46.2mm	1:1/2:1	0.23ml	Grey	Straight
114249	2.5mm	12	49.7mm	1:1/2:1	0.23ml	Grey	Tapered
115686	2.5mm	16	59.7mm	1:1/2:1	0.27ml	Grey	Tapered
114254	3.2mm	12	56.0mm	1:1/2:1	0.39ml	Grey	Straight
114250	3.2mm	12	61.0mm	1:1/2:1	0.39ml	Grey	Tapered
114251	3.2mm	16	74.0mm	1:1/2:1	0.49ml	Grey	Tapered

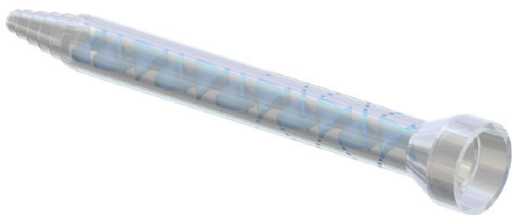


Code	ID	Elements	Length	Mix Ratio	Volume	Colour	Outlet
114260	2.5mm	8	36.2mm	4:1/10:1	0.19ml	Grey	Straight
114255	2.5mm	8	39.7mm	4:1/10:1	0.19ml	Grey	Tapered
114261	2.5mm	12	46.2mm	4:1/10:1	0.23ml	Grey	Straight
114256	2.5mm	12	49.7mm	4:1/10:1	0.23ml	Grey	Tapered
114257	2.5mm	16	59.7mm	4:1/10:1	0.27ml	Grey	Tapered
114262	3.2mm	12	56.0mm	4:1/10:1	0.39ml	Grey	Straight
114258	3.2mm	12	61.0mm	4:1/10:1	0.39ml	Grey	Tapered
114259	3.2mm	16	74.0mm	4:1/10:1	0.49ml	Grey	Tapered



ME Series Machine Mixers

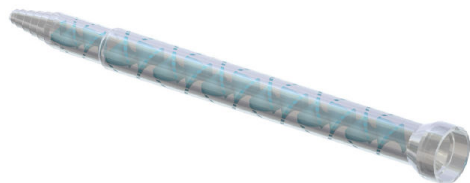
For high pressure, Ø of bell mouth housing 15.9 mm



Code	Elements	ID	Outlet	Length	Max Pressure
ME05-24T	24	5.0mm	1.5mm	149mm	33 BAR
ME05-32T	32	5.0mm	1.5mm	188mm	33 BAR
ME06-24T	24	6.4mm	1.8mm	186mm	33 BAR
ME06-32T	32	6.4mm	1.8mm	235mm	33 BAR
ME06-48T	48	6.4mm	2.4mm	334mm	33 BAR
ME08-24T	24	8.0mm	2.4mm	223mm	33 BAR
ME08-32T	32	8.0mm	2.4mm	289mm	33 BAR
ME10-24T	24	10.0mm	3.0mm	276mm	33 BAR
ME10-32T	32	10.0mm	3.0mm	355mm	33 BAR
ME13-24T	24	13.0mm	4.0mm	350mm	33 BAR
ME13-32T	32	13.0mm	4.0mm	378mm	33 BAR

ME Series Machine Mixers

For high pressure with C-interface 4:1/10:1



Code	Elements	ID	Outlet	Length	Max Pressure
102455	12 + 32	10/8mm	2.4mm	409mm	22 BAR
102458	12 + 32	13/10mm	7.2mm	499mm	17 BAR

MEF Series Machine Mixers

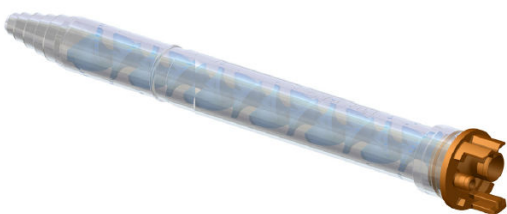
For high pressure with F-interface 1:1/2:1



Code	Elements	ID	Outlet	Length	Max Pressure
MEF06-24T	24	6.4mm	1.8mm	195mm	30 BAR
MEF06-32T	32	6.4mm	1.8mm	245mm	30 BAR
MEF08-24T	24	8.0mm	2.4mm	235mm	27 BAR
MEF08-32T	32	8.0mm	2.4mm	299mm	27 BAR
MEF10-24T	24	9.9mm	3.0mm	280mm	22 BAR
MEF10-32T	32	9.9mm	3.0mm	360mm	22 BAR
MEF13-18T	18	13.0mm	4.0mm	235mm	17 BAR
MEF13-24T	24	13.0mm	4.0mm	296mm	17 BAR

MEFX Series Machine Mixers

For high pressure with F-interface 4:1/10:1



Code	Elements	ID	Outlet	Length	Max Pressure
MEFX06-18T	18	6.4mm	1.8mm	157mm	30 BAR
MEFX08-18T	18	8.0mm	2.4mm	185mm	27 BAR
MEFX10-18T	18	9.9mm	3.0mm	222mm	22 BAR
MEFX13-18T	18	13.0mm	4.0mm	235mm	17 BAR
MEFX13-24T	24	13.0mm	4.0mm	296mm	17 BAR

Important: For health and safety reasons, safety shrouds must be used at all times.

Machine Grade Static Mixer Nozzles

MS Series Machine Mixers

For high pressure, Ø of bell mouth housing 16.7 mm

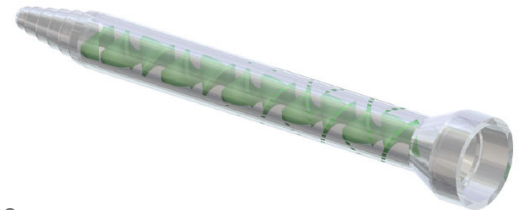
Code	Elements	ID	Outlet	Length	Max Pressure
MS05-24T	24	5.0mm	1.5mm	149mm	33 BAR
MS05-32T	32	5.0mm	1.5mm	188mm	33 BAR
MS06-24T	24	6.4mm	1.8mm	186mm	30 BAR
MS06-32T	32	6.4mm	1.8mm	235mm	30 BAR
MS06-48T	48	6.4mm	2.4mm	334mm	30 BAR
MS06-56L	56	6.4mm	4.5mm	378mm	30 BAR
MS06-56D	56	6.4mm	4.5mm	378mm	30 BAR
MS08-24T	24	8.0mm	2.4mm	223mm	27 BAR
MS08-32T	32	8.0mm	2.4mm	289mm	27 BAR
MS10-18T	18	10.0mm	3.0mm	214mm	22 BAR
MS10-24T	24	10.0mm	3.0mm	276mm	22 BAR
MS10-32T	32	10.0mm	3.0mm	355mm	22 BAR
MS13-12G	12	13.0mm	10.0mm	159mm	17 BAR
MS13-18G	18	12.8mm	10.0mm	223mm	17 BAR
MS13-24T	24	13.0mm	4.0mm	293mm	17 BAR
MS13-32T	32	13.0mm	4.0mm	378mm	17 BAR
MS13-36T	36	13.0mm	4.0mm	397mm	17 BAR



MR Series Machine Mixers

For low viscosity 2-component reactive resin systems / Ø of bell mouth housing 16.7 mm

Code	Elements	ID	Outlet	Length	Max Pressure
MSR06-12T	12	6.4mm	1.8mm	112mm	30 BAR
MSR08-12T	12	8.0mm	2.4mm	130mm	27 BAR
MSR10-12T	12	10.0mm	3.0mm	155mm	22 BAR
MSR13-12T	12	13.0mm	4.0mm	197mm	17 BAR



Important: For health and safety reasons, safety shrouds must be used at all times.

Industrial Machine Mixer Safety Shrouds

High quality safety shrouds for MS mixers

Code	Description	ID	OD	Length
114335	Shroud for MS Mixer, aluminium alloy, anodized finish, nut across flats 27.0 mm (1 1/16"), optional fitting 7/8" - 14 UNC thread	8.2mm	11.5mm	146mm
114340	Shroud for MS Mixer, aluminium alloy, anodized finish, nut across flats 27.0 mm (1 1/16"), optional fitting 7/8" - 14 UNC thread	8.2mm	11.5mm	185mm
114336	Shroud for MS Mixer, aluminium alloy, anodized finish, nut across flats 27.0 mm (1 1/16"), optional fitting 7/8" - 14 UNC thread	10.2mm	14.0mm	180mm
114341	Shroud for MS Mixer, aluminium alloy, anodized finish, nut across flats 27.0 mm (1 1/16"), optional fitting 7/8" - 14 UNC thread	10.2mm	14.0mm	229mm
114348	Shroud for MS Mixer, aluminium alloy, anodized finish, nut across flats 27.0 mm (1 1/16"), optional fitting 7/8" - 14 UNC thread	10.7mm	15.0mm	329mm
114347	Shroud for MS Mixer, aluminium alloy, anodized finish, nut across flats 27.0 mm (1 1/16"), optional fitting 7/8" - 14 UNC thread	10.7mm	15.0mm	384mm





High quality safety shrouds for MS mixers

Code	Description	ID	OD	Length
114337	Shroud for MS Mixer, aluminium alloy, anodized finish, nut across flats 27.0 mm (1 1/16"), optional fitting 7/8" - 14 UNC thread	12.2mm	16.0mm	215mm
114342	Shroud for MS Mixer, aluminium alloy, anodized finish, nut across flats 27.0 mm (1 1/16"), optional fitting 7/8" - 14 UNC thread	12.2mm	16.0mm	279mm
114338	Shroud for MS Mixer, aluminium alloy, anodized finish, nut across flats 27.0 mm (1 1/16"), optional fitting 7/8" - 14 UNC thread	14.2mm	19.0mm	266mm
114343	Shroud for MS Mixer, aluminium alloy, anodized finish, nut across flats 27.0 mm (1 1/16"), optional fitting 7/8" - 14 UNC thread	14.2mm	19.0mm	342mm
114367	Shroud for MS Mixer, aluminium alloy, anodized finish, nut across flats 27.0 mm (1 1/16"), optional fitting 7/8" - 14 UNC thread	17.2mm	23.0mm	281mm
114369	Shroud for MS Mixer, aluminium alloy, anodized finish, nut across flats 27.0 mm (1 1/16"), optional fitting 7/8" - 14 UNC thread	17.2mm	23.0mm	366mm



High quality safety shrouds for ME mixers

Code	Description	ID	OD	Length
114351	Shroud for MS Mixer, aluminium alloy, anodized finish, nut across flats 27.0 mm (1 1/16"), optional fitting 7/8" - 9 UNC thread	8.2mm	11.5mm	146mm
114356	Shroud for MS Mixer, aluminium alloy, anodized finish, nut across flats 27.0 mm (1 1/16"), optional fitting 7/8" - 9 UNC thread	8.2mm	11.5mm	185mm
114352	Shroud for MS Mixer, aluminium alloy, anodized finish, nut across flats 27.0 mm (1 1/16"), optional fitting 7/8" - 14 UNC thread	10.2mm	14.0mm	180mm
114357	Shroud for MS Mixer, aluminium alloy, anodized finish, nut across flats 27.0 mm (1 1/16"), optional fitting 7/8" - 9 UNC thread	10.2mm	14.0mm	229mm
114349	Shroud for MS Mixer, aluminium alloy, anodized finish, nut across flats 27.0 mm (1 1/16"), optional fitting 7/8" - 9 UNC thread	10.7mm	15.0mm	329mm
114365	Shroud for MS Mixer, aluminium alloy, anodized finish, nut across flats 27.0 mm (1 1/16"), optional fitting 7/8" - 9 UNC thread	10.7mm	15.0mm	384mm
114353	Shroud for MS Mixer, aluminium alloy, anodized finish, nut across flats 27.0 mm (1 1/16"), optional fitting 7/8" - 9 UNC thread	12.2mm	16.0mm	215mm
114358	Shroud for MS Mixer, aluminium alloy, anodized finish, nut across flats 27.0 mm (1 1/16"), optional fitting 7/8" - 9 UNC thread	12.2mm	16.0mm	279mm
114354	Shroud for MS Mixer, aluminium alloy, anodized finish, nut across flats 27.0 mm (1 1/16"), optional fitting 7/8" - 9 UNC thread	14.2mm	19.0mm	266mm
114359	Shroud for MS Mixer, aluminium alloy, anodized finish, nut across flats 27.0 mm (1 1/16"), optional fitting 7/8" - 9 UNC thread	14.2mm	19.0mm	342mm

