

VOLVO CONSTRUCTION EQUIPMENT

# PRODUCT RANGE GUIDE



VOLVO CONSTRUCTION EQUIPMENT



# QUALITY, SAFETY, ENVIRONMENTAL CARE...

ARTICULATED HAULERS .....	4	SKID STEER LOADERS AND COMPACT TRACK LOADERS .....	22
COMPACT WHEEL LOADERS .....	6	MOTOR GRADERS .....	24
WHEEL LOADERS .....	8	SOIL COMPACTORS.....	26
COMPACT AND SHORT RADIUS EXCAVATORS.....	10	ASPHALT COMPACTORS .....	28
CRAWLER EXCAVATORS .....	12	ASPHALT PAVERS .....	30
WHEELED EXCAVATORS .....	14	MILLING MACHINES.....	33
ULTRA HIGH REACH EXCAVATORS.....	16	VOLVO SUPPORT STRUCTURE.....	35
PIPELAYERS .....	18	THE VOLVO GROUP .....	37
BACKHOE LOADERS .....	20	VOLVO TIMELINE .....	39



*Volvo Construction Equipment  
North America Headquarters*



*Shippensburg Manufacturing Facility*

Volvo Construction Equipment is one of the largest manufacturers of construction equipment in the world. For decades, the company has dedicated extensive resources to a continuous development and upgrading of its extensive product line – Volvo excavators, articulated haulers, wheel loaders, motor graders, compact wheel loaders and excavators, backhoe and skid steer loaders and road building equipment – compaction, paving, and milling machines. To building centers of excellence for the production of excavators and wheel loaders. To new, state-of-the-art research facilities for the development of next-generation heavy-duty diesel and alternative fuel engines and hybrid power systems for construction equipment that keeps our customers competitive and productive.

The benefits of owning and operating Volvo construction equipment show up everyday on your job site. As productivity increases due to the operation of more efficient equipment, your cost of operation is reduced. Your cost of ownership is reduced when you find that the



*Asheville Demonstration Ground*

purchase price of Volvo equipment is a capital investment that does indeed pay dividends throughout its life cycle...and the purchase price is of less consideration as the value of the equipment and its return on your investment becomes apparent.

# VOLVO ARTICULATED HAULERS: STANDARD & FULL SUSPENSION

## Maintenance-Free

(Suspension, no daily/weekly greasing)

## Operator Comfort

(Visibility, environment, steering)

## Volvo Axles & Brakes

(All-wheel braking, 100% lock-up differentials)

## Volvo Engine

(Durable, reliable & fuel efficient)

## Volvo Transmission

(Automatic PowerTronic planetary)

## Volvo Engine, Tier 4i

- High-torque at low rpm & highest power to weight ratio (6.2 hp/ton on average)
- High-capacity, variable speed engine cooling fans run as required to keep engine at maximum efficiency
- All Volvo powertrain for high mechanical efficiency

## Axles & Brakes

- All wheel braking on all models: dry disc (A25F, A30F), wet disc (A35F/FS, A40F/FS) brakes are smooth & precise for 30% - 50% shorter stops over major competition
- Industry exclusive 100% locking, dog-clutch differentials for maximum torque transfer to wheels

## Serviceability

- No daily/weekly maintenance - 250 hour initial service & greasing - quick oil draining/filter replacement due to remote drains & front swing down grill
- Daily service savings add up to ~\$15K per year, per truck
- Maintenance free hitch

## Suspension

- Standard suspension haulers feature three-point mounted front suspension and straddle mounted bogie beams on rear axles. 25/30 features gas hydraulic struts.
- Full suspension haulers feature true free-flowing hydraulic oil to and from the hydraulic tank and functions. This is not the traditional closed nitrogen cylinders like the competition. Gains of up to 32% in productivity on rough and dry haul roads!

## Transmission

- Industry exclusives, Gear-Skipping Technology (A35F/FS, A40F/FS) & Automatic Traction Control (A25F, A30F, A35F/FS, A40F/FS)

## Volvo Care Cab

- Best-in-class cab filtration, air suspension seat (with heat), air-conditioning, CD player, tilt/telescopic steering wheel
- Quiet, spacious, comfortable, with excellent visibility and ergonomically positioned controls
- Monitoring systems include Contronics (constant machine diagnostics), MATRIS (operational information) & CareTrack (GSM/satellite monitoring)

## ARTICULATED HAULERS: STANDARD & FULL SUSPENSION

	Engine Gross HP	Engine Max Torque	Engine Displacement	Transmission Make/Model	Transmission Gears	Top Speed	Dropbox Make/Model Speeds	Body Payload/Volume	Dump Angle/Body Up/Down
<b>A25F</b>	315 hp (235 kW)	1,505 ft-lb (2,040 Nm)	659 in <sup>3</sup> (10.8 l)	Planetary Volvo PT 1562	6 / 2	33 mph (53 km)	Volvo IL 1 Single Stage	26.5 tons/ 19.6 yd <sup>3</sup>	74° 12 / 9
<b>A30F</b>	356 hp (266 kW)	1,505 ft-lb (2,040 Nm)	659 in <sup>3</sup> (10.8 l)	Planetary Volvo PT 1562	6 / 2	33 mph (53 km)	Volvo IL 1 Single Stage	31.0 tons/ 22.9 yd <sup>3</sup>	70° 12 / 9
<b>A35F</b> <b>A35F FS</b>	441 hp (329 kW)	1,740 ft-lb (2,360 Nm)	781 in <sup>3</sup> (12.8 l)	Planetary Volvo PT 2509	9 / 3	35.4 mph (57 km)	Volvo IL 2 Single Stage	37.0 tons/ 26.8 yd <sup>3</sup>	70° 12 / 10
<b>A40F</b> <b>A40F FS</b>	469 hp (350 kW)	1,862 ft-lb (2,525 Nm)	982 in <sup>3</sup> (16.1 l)	Planetary Volvo PT 2509	9 / 3	35.4 mph (57 km)	Volvo IL 2 Single Stage	43.0 tons/ 31.4 yd <sup>3</sup>	72° 12 / 10

	Brakes/Actuation	Retarders	Front Suspension	Rear Suspension	Standard Tires/ (Optional Tires)	Grnd. Press Front Tires	Grnd. Press Rear	GVW	HP/Ton
<b>A25F</b>	6 whl dry-disc/ Air/Oil	Engine/Trans	Gas Hydraulics Three Point	Mech/Rubber Three Point	23.5R25 (750/65R25)	20.9 psi 144 (kPa)	23.1 psi 159 (kPa)	100,440 lbs 45,560 (kg)	6.3
<b>A30F</b>	6 whl dry-disc/ Air/Oil	Engine/Trans	Gas Hydraulics Three Point	Mech/Rubber Three Point	23.5R25 (750/65R25)	17.5 psi 121 (kPa)	21.2 psi 146 (kPa)	112,570 lbs 51,060 (kg)	6.3
<b>A35F</b> <b>A35F FS</b>	6 whl wet-disc/ Oil	Engine	Rubber/Shocks Fully Hydraulic	Mech/Rubber (FS Model)	26.5R25 (775/65R29)	18.4 psi 127 (kPa)	22.8 psi 157 (kPa)	136,686 lbs 61,600 (kg)	6.3
<b>A40F</b> <b>A40F FS</b>	6 whl wet-disc/ Oil	Engine	Rubber/Shocks Fully Hydraulic	Mech/Rubber (FS Model)	29.5R25 (875/65R29)	19.6 psi 135 (kPa)	24.9 psi 172 (kPa)	152,560 lbs 69,200 (kg)	6.1

# VOLVO COMPACT WHEEL LOADERS



## Engine

- High torque at low rpm (1600 -1700 rpm) - Volvo D3.6D (L20F/L25F), turbo D3D (L30B/L35B)

## Axles & Brakes

- Wear-free hydrostatic braking - first 2/3 of inch/brake pedal de-strokes hydrostatic pump which reduces travel speed and at the same time maintains engine RPM for work hydraulics. Final 1/3 applies service brake.
- Standard operator selectable 100% differential lock in front & rear axles provide maximum traction

## Hydraulics

- Separate working/steering pumps. Most competitors use priority valves for steering/working hydraulics - increases lag time when using both functions

## Articulating - Oscillating Joint

- Center-point A-O joint features tight turning radius & maximizes stability in uneven terrain

## Serviceability

- Ground level service points, pressure test ports, remote fluid drains & easy filter replacements

## COMPACT WHEEL LOADERS

	Weight (cab)	Bucket Range	Engine Net HP	Full-turn tip load with bucket	Payload 80% transport position 40° full-turn (with forks) *	Dump Height
<b>L20F</b>	9,945 lbs (4,510 kg)	.85 - 1.25 yds <sup>3</sup> (.65 - .95 m <sup>3</sup> )	54 hp (40 kW)	6,175 lbs (2,800 kg)	4,520 lbs (2,050 kg)	8' 3" (2.5 m)
<b>L25F</b>	10,650 lbs (4,830 kg)	1.0 - 1.6 yds <sup>3</sup> (0.85 - 1.2 m <sup>3</sup> )	60 hp (44.7 kW)	7,495 lbs (3,400 kg)	5,500 lbs (2,500 kg)	8' 2" (2.5 m)
<b>L30B</b>	12,040 lbs (5,461 kg)	1.2 - 2.1 yds <sup>3</sup> (.9 - 1.6 m <sup>3</sup> )	68 hp (50 kW)	8,490 lbs (3,851 kg)	5,500 lbs (2,500 kg)	8' 4" (2.5 m)
<b>L35B</b>	13,710 lbs (6,219 kg)	1.4 - 2.1 yds <sup>3</sup> (1.05 - 1.6 m <sup>3</sup> )	75 hp (55 kW)	9,480 lbs (4,300 kg)	5,500 lbs (2,500 kg)	8' 9" (2.6 m)

\* On firm, level ground

# VOLVO WHEEL LOADERS

## Operator Comfort

(Visibility & environment)

## Volvo Engine

(Durable, reliable & fuel efficient)

## Torque Parallel Linkage

(L45G-L220G: High breakout force & parallel lift versatility)

## Modified Z-bar Linkage

(L250G-L350F: High breakout force)

## Volvo Axles & Brakes

(Outboard brakes, 100% locking front axle differentials)

## Volvo Transmission

(Fully Automatic Power Shift)



## Volvo Engine, Tier 4i

- High torque at low rpm (1100-1600 rpm) - load sensing hydraulic pumps provide high flow at low rpm, increases fuel efficiency (ton/gal)
- Reversible, variable-speed engine cooling fan runs as required to keep engine at maximum efficiency, lowers fuel consumption (gal/hr)

## Transmission

- Automatic Power Shifting - full auto-shifting & ability to control shifting pattern based on rpm and ground speed, improves cycle times & minimizes fuel consumption

## Axles & Brakes

- Industry exclusive forced oil-cooled, outboard-mounted, planetary wet disc brakes with brake wear indicators, lower operating costs - extends brake life
- Selectable 100% differential lock in front axle & a maintenance-free rear axle trunnion standard, maximizes traction (diff. lock) and lowers operating costs

## Torque Parallel Linkage (L45G - L220G)

- High breakout torque/force & parallel lift at all heights and attachment angles with excellent visibility
- High stability, especially during load & carry due to placement of load closer to front axle. High versatility with Quick Coupler

## Volvo Care Cab

- Best-in-class cab filtration, front pillar mounted switches, adjustable seat & tilt/telescopic steering wheel
- Due to overall comfort, operators say they are more productive over a day's shift
- Monitoring systems include Contronics (constant machine diagnostics), MATRIS (operational information) & CareTrack (GSM/satellite monitoring)

## Value

- Breather filters on axles, transmission, fuel tank, hydraulic tank provides contaminant free lubrication
- No line boring of frames due to Volvo's exclusive frame joint design- \$30K savings over the competition (30K hrs)



# WHEEL LOADERS

	Max. Power at	Engine HP (net)	Maximum Torque at	Maximum Torque net	Breakout Force	Static Tipping Load at Full Turn †	Bucket Range	Operating Weight
<b>L45G*</b>	1800 rpm	98 hp (73 kW)	1450 rpm	299 lbf ft (406 Nm)	13,421 lbf (59.7 kN)	11,547 lbs (5,250 kg)	1.8 – 2.6 yds <sup>3</sup> (1.4 – 2.0 m <sup>3</sup> )	19,030 – 20,040 lbs (8.6 – 9.1 t)
<b>L50G*</b>	1900 rpm	114 hp (85 kW)	1450 rpm	345 lbf ft (468 Nm)	15,512 lbf (69 kN)	12,677 lbs (5,750 kg)	2.0 – 3.0 yds <sup>3</sup> (1.5 – 2.3 m <sup>3</sup> )	20,745 – 21,800 lbs (9.4 – 9.9 t)
<b>L60G*</b>	1,400 - 1,800 rpm	161 hp (120 kW)	1,400 rpm	605 lbf ft (820 Nm)	18,030 lbf (80.2 kN)	15,570 lbs (7,060 kg)	2.2 – 6.5 yd <sup>3</sup> (1.6 – 5.0 m <sup>3</sup> )	24,250 – 29,320 lbs (11.0 – 13.6 t)
<b>L70G*</b>	1,400 - 1,700 rpm	169 hp (126 kW)	1,400 rpm	634 lbf ft (860 Nm)	20,290 lbf (90.3 kN)	17,470 lbs (7,920 kg)	2.4 – 8.4 yd <sup>3</sup> (1.8 – 6.4 m <sup>3</sup> )	28,000 – 33,070 lbs (12.7– 15.5 t)
<b>L90G**</b>	1,400 - 1,700 rpm	173 hp (129 kW)	1,400 rpm	649 lbf ft (880 Nm)	30,470 lbf (135.5 kN)	20,950 lbs (9,500 kg)	2.9 – 9.2 yd <sup>3</sup> (2.2 – 7.0 m <sup>3</sup> )	29,000 – 34,600 lbs (14.5 – 17.3 t)
<b>L110G***</b>	1,700 rpm	258 hp (190 kW)	1,400 rpm	920 lbf ft (1,248 Nm)	36,440 lbf (162.1 kN)	25,125 lbs (11,420 kg)	3.5 – 12.4 yd <sup>3</sup> (2.7 – 9.5 m <sup>3</sup> )	39,680 – 44,090 lbs (18.0 – 20.0 t)
<b>L120G***</b>	1,700 rpm	268 hp (200 kW)	1,500 rpm	968 lbf ft (1,312 Nm)	36,800 lbf (163.7 kN)	26,690 lbs (12,130 kg)	3.5 – 12.4 yd <sup>3</sup> (2.7 – 9.5 m <sup>3</sup> )	39,680 – 44,090 lbs (18.0 – 20.0 t)
<b>L150G***</b>	1,300 rpm	295 hp (220 kW)	1,050 rpm	1,379 lbf ft (1,869 Nm)	45,187 lbf (201.1 kN)	38,493 lbs (17,460 kg)	4.1 – 15.7 yd <sup>3</sup> (3.1 – 12.0 m <sup>3</sup> )	50,000 – 55,000 lbs (25.0 – 27.5 t)
<b>L180G***</b>	1,300 rpm	328 hp (245 kW)	1,000 rpm	1,493 lbf ft (2,024 Nm)	50,537 lbf (224.8 kN)	44,114 lbs (20,010 kg)	5.0 – 18.3 yd <sup>3</sup> (3.7 – 14.0 m <sup>3</sup> )	58,000 – 61,000 lbs (29.0 – 30.5 t)
<b>L220G***</b>	1,300 rpm	366 hp (273 kW)	1,100 rpm	1,637 lbf ft (2,220 Nm)	51,301 lbf (228.2 kN)	47,972 lbs (21,760 kg)	5.9 – 18.3 yd <sup>3</sup> (4.5 – 14.0 m <sup>3</sup> )	70,000 – 73,000 lbs (35.0 – 36.5 t)
<b>L250G***</b>	1,500 rpm	389 hp (290 kW)	1,100 rpm	1634 lbf ft (2,216 Nm)	65,329 lbf (290.6 kN)	51,676 lbs (23,440 kg)	8.0 – 13.3 yd <sup>3</sup> (6.1 – 10.2 m <sup>3</sup> )	74,600 – 79,000 lbs (33,840 – 35,900 kg)
<b>L350F**</b>	1,700 rpm	528 hp (394 kW)	1,400 rpm	1,870 lbf ft (2,530 Nm)	106,770 lbf (474.9 kN)	77,320 lbs (35,072 kg)	8.1 – 16.6 yd <sup>3</sup> (6.2 – 12.7 m <sup>3</sup> )	110,230 – 123,460 lbs (50.0 – 56.0 t)

\* Machine equipped with attachment bracket and general purpose hook-on buckets with bolt-on edges.

\*\* Machine equipped with general purpose pin-on direct mount buckets with bolt-on edges.

† Machine equipped with standard duty general purpose bucket with bolt-on edges.

\*\*\* Machine equipped with pin-on rehandling bucket with bolt-on edge.

# VOLVO COMPACT AND SHORT RADIUS EXCAVATORS

## Serviceability

(Safe, easy access to areas)

## Hydraulics

(Powerful, versatile & balanced)

## Operator Comfort

(Visibility & environment)

## Engine

(Durable, reliable & fuel efficient.)

## Frame

(Durable, rigid & reinforced)

## Volvo Engine

- Volvo Engine: high torque at low rpm (1400 -1600 rpm) Volvo D1.1 (EC20), D1.2 (ECR28), D2.2D (EC35C), D3.1D (EC55C), (1400 -1600 rpm) Volvo D1.6 (ECR38), D3.1D (ECR58), D3.4D (ECR88)

## Versatility

- Short radius, fits into tight spaces (*Short Radius Excavators*)

## Volvo Care Cab

- Best-in-class cab filtration, adjustable seat, armrests, heating & ventilation adjustments (see brochures for standard/options)

## Serviceability

- Easily accessed hatches and service areas, remote fluid drains & easy filter replacements

## Value

- Fuel Efficiency and Operator Comfort #1

## COMPACT AND SHORT RADIUS EXCAVATORS

	WEIGHT			HYDRAULICS		
	Engine	Canopy	Cab	Digging Depth	Breakout Force	Tearout Force
<b>EC20C</b>	16.2 hp (11.9 kW)	4,078 lbs (1,850 kg)	4,277 lbs (1,940 kg)	7' 4" (2.3 m)	2,810 lbf (12.5 kN)	4,159 lbf (18.5 kN)
<b>EC35C</b>	34.9 hp (26.0 kW)	7,573 lbs (3,435 kg)	7,859 lbs (3,565 kg)	11' 3" (3.4 m)	6,955 lbf (30.9 kN)	5,033 lbf (22.4 kN)
<b>EC55C</b>	47.1 hp (35.1 kW)	N/A	12,566 lbs (5,700 kg)	12' 4" (3.8 m)	9,300 lbf (41.4 kN)	6,400 lbf (28.4 kN)

	WEIGHT			HYDRAULICS		
	Engine	Canopy	Cab	Digging Depth	Breakout Force	Tearout Force
<b>ECR28</b>	18.3 hp (13.4 kW)	6,012 lbs (2700 kg)	6,219 lbs (2800 kg)	7'10" (2.4 m)	3,282 lbf (14.6 kN)	4,429 lbf (19.7 kN)
<b>ECR38</b>	27.0 hp (19.9 kW)	7,355 lbs (3,336 kg)	7,561 lbs (3,400 kg)	9' 0" (2.7 m)	4,305 lbf (19.2 kN)	6,463 lbf (28.8 kN)
<b>ECR58</b>	50.8 hp (38.0 kW)	N/A	12,963 lbs (5,880 kg)	11' 10" (3.6 m)	6,070 lbf (27.0 kN)	8,768 lbf (39.0 kN)
<b>ECR88</b>	56.8 hp (42.0 kW)	N/A	18,629 lbs (8,450 kg)	13' 8" (4.2 m)	9,217 lbf (41.0 kN)	13,623 lbf (59.0 kN)

# VOLVO CRAWLER EXCAVATORS

## Serviceability

(Safe, easy access to areas)

## Operator Comfort

(Visibility & environment)

## Volvo Engine

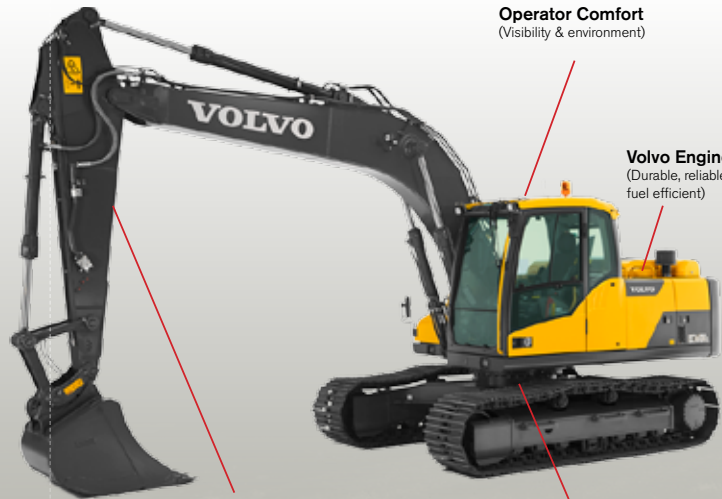
(Durable, reliable & fuel efficient)

## Hydraulics

(Powerful, versatile, balanced & precise)

## Frame

(Durable, rigid & reinforced)



## Volvo Engine, Tier 4i

- High power/torque at low rpm hydraulic pumps provide full flow at low rpm
- High-capacity, variable speed engine cooling fans run as required to keep engine at maximum efficiency

## Hydraulics

- Work modes match hydraulic speed & power in different applications - heavy, general, fine control, idling
- Boom/arm summation system maximizes power by prioritizing functions - as digging forces increase, flow, at the same pressure, increases to raise hydraulic power

## Serviceability

- Easily accessed hatches and service areas, remote fluid drains and easy filter replacements

## Frame

- Robotically welded frame is strategically reinforced on both upper and lower structures
- Chrome pins with brass bushings & graphite inserts are used on boom foot and boom cylinders

## Volvo Care Cab

- Best-in-class cab filtration, adjustable seat, armrests, air conditioning, excellent visibility & anti-glare LCD color monitor with rearview camera
- Monitoring systems include Contronics (constant machine diagnostics), MATRIS (operational information) & CareTrack (GSM/satellite monitoring)
- ROPS certified cabs ensure a safer working environment

# CRAWLER EXCAVATORS

	Engine HP (net) SAE J1349	Bucket Capacity	Lifting Capacity Along Undercarriage at Reach/Height <small>(Standard Configuration)</small>		Reach (max.)	Digging Depth (max.)	Breakout Force SAE J1179	Operating Weight
<b>EC140D</b>	113 hp (84 kW)	0.62 – 1.21 yd3 (0.48 – 0.93 m3)	7,900 lbs 20' / 5' ft	3.6 t 6.0 / 1.5 m	27' 5" (8.3 m)	18' 2" (5.5 m)	22,050 lbs (98.1 kN)	28,000 – 33,070 lbs (12.7 – 15.2 t)
<b>ECR145D</b>	113 hp (84 kW)	0.69 – 1.14 yd3 (0.53 – 0.88 m3)	7,880 lbs 20' / 5' ft	3.7 t 6.0 / 1.5 m	26' 11" (8.2 m)	18' 1" (5.5 m)	21,700 lbs (96.6 kN)	31,640 – 37,080 lbs (14.4 – 16.8 t)
<b>EC160D</b>	139 hp (104 kW)	0.92 – 1.47 yd3 (0.70 – 1.12 m3)	11,240 lbs 20' / 5' ft	5.1 t 6.0 / 1.5 m	29' 6" (9.0 m)	19' 10" (6.0 m)	27,270 lbs (121.3 kN)	36,380 – 43,650 lbs (16.5 – 19.8 t)
<b>EC220D</b>	172 hp (128 kW)	1.08 – 1.86 yd3 (0.83 – 1.43 m3)	16,420 lbs 20' / 5' ft	7.5 t 6.0 / 1.5 m	32' 6" (9.9 m)	22' 1" (6.7 m)	34,400 lbs (153.0 kN)	46,300 – 54,230 lbs (21.0 – 24.6 t)
<b>ECR235D</b>	172 hp (128 kW)	1.35 – 1.81 yd3 (1.03 – 1.38 m3)	16,830 lbs 20' / 5' ft	7.8 t 6.0 / 1.5 m	31' 11" (9.7 m)	22' 0" (6.7 m)	33,700 lbs (150.0 kN)	52,380 – 60,980 lbs (23.8 – 27.7 t)
<b>EC250D</b>	202 hp (151 kW)	1.37 – 2.39 yd3 (1.05 – 1.83 m3)	21,030 lbs 20' / 5' ft	9.7 t 6.0 / 1.5 m	33' 10" (10.3 m)	22' 1" (6.9 m)	41,810 lbs (186.0 kN)	54,230 – 61,730 lbs (24.6 – 28 t)
<b>EC300D</b>	227 hp (169 kW)	1.50 – 2.55 yd3 (1.15 – 1.95 m3)	24,300 lbs 20' / 5' ft	11.2 t 6.0 / 1.5 m	35' 3" (10.7 m)	24' 0" (7.3 m)	45,970 lbs (205.0 kN)	66,140 – 73,630 lbs (30.0 – 33 t)
<b>ECR305C</b>	192 hp (143 kW)	1.70 – 2.55 yd3 (2.43 – 3.64 m3)	23,870 lbs 20' / 5' ft	11 t 6.0 / 1.5 m	34' 11" (10.6 m)	22' 10" (7.0 m)	38,810 lbs (173.0 kN)	74,230 – 81,330 lbs (33.7 – 36.9 t)
<b>EC340D</b>	279 hp (208 kW)	2.32 – 3.07 yd3 (1.77 – 2.35 m3)	33,180 lbs 20' / 5' ft	15.1 t 6.0 / 1.5 m	38' 6" (11.0 m)	26' 9" (3.9 m)	54,630 lbs (243.0 kN)	77,240 – 80,370 lbs (35.0 – 36.5 t)
<b>EC380D</b>	279 hp (208 kW)	2.19 – 3.63 yd3 (1.67 – 2.77 m3)	33,400 lbs 20' / 5' ft	15.2 t 6.0 / 1.5 m	38' 6" (11.2 m)	26' 9" (3.9 m)	54,630 lbs (243.0 kN)	84,670 – 87,540 lbs (38.0 – 39.8 t)
<b>EC480D</b>	343 hp / (260 kW)	2.32 – 4.97 yd3 (1.77 – 3.80 m3)	39,080 lbs 20' / 5' ft	19 t 6.0 / 1.5 m	43' 6" (12.0 m)	30' 1" (9.2 m)	64,070 lbs (285.0 kN)	105,000 – 107,000 lbs (47.4 – 49.0 t)
<b>EC700C</b>	424 hp / (316 kW)	3.2 – 8.63 yd3 (2.43 – 6.60 m3)	55,820 lbs 20' / 5' ft	25.3 t 6.0 / 1.5 m	43' 3" (13.2 m)	27' 7" (8.4 m)	80,030 lbs (356.0 kN)	158,070 – 158,070 lbs (68.3 – 71.7 t)

# VOLVO WHEELED EXCAVATORS

## Serviceability

(Safe, easy access to areas)

## Operator Comfort

(Visibility & protection)

## Volvo Engine

(Durable, reliable & fuel efficient)

## Hydraulics

(Powerful, versatile, balanced & precise)

## Undercarriage

(Durability & stability)

## Volvo Engine, Tier 4i

- High-capacity, variable speed engine cooling fans run as required to keep engine at maximum efficiency
- High torque at low rpm maximizing loading efficiency

## Hydraulics

- Advanced mechatronics optimizes power balance by matching hydraulic power to engine power at all times
- Different work modes - Parking, Travel, Working, and Customer Working mode for 100% hydraulic power
- High flow/high pressure auxiliary hydraulics is standard on all wheeled excavators

## Serviceability

- Easily accessed hatches & ground level servicing, removable screens, remote drains, easily replaced filters

## Undercarriages

- Outboard mounted wet disc brakes increase brake life - Automatic downhill retardation prevents the machine from over speeding & minimizes use of service brakes
- Heavy gauge outriggers & stabilizer blade have a wide stance to maximize stability & minimize surface damage

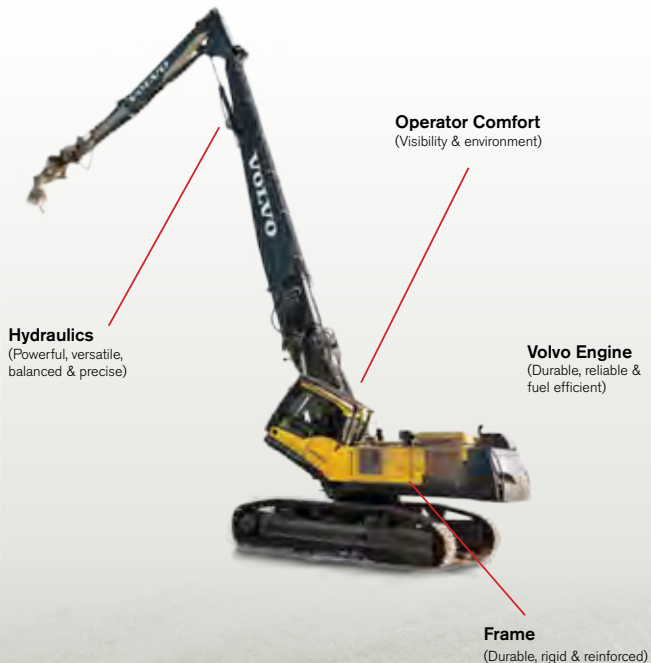
## Volvo Care Cab

- Best-in-class cab filtration, adjustable seat, arm rests, air conditioning & anti-glare LCD color monitor with rearview camera (see brochures for further standards/options)
- Monitoring systems include Contronics (constant machine diagnostics), MATRIS (operational information) & CareTrack (GSM/satellite monitoring)
- ROPS certified cabs ensure a safer working environment

# WHEELED EXCAVATORS

	Engine HP (net) SAE J1349	Bucket Capacity	Lifting Capacity Along Undercarriage at Reach/Height <small>(Standard Configuration)</small>		Reach (max.)	Digging Depth (max.)	Breakout Force SAE J1179	Operating Weight
<b>EW160D</b>	150 HP (112 kW)	0.82 – 1.21 yd <sup>3</sup> (0.63 – 0.93 m <sup>3</sup> )	11,900 lbs 20'/5' ft	5.4 t 6.0 / 1.5 m	30' 1" (9.2 m)	18' 10" (5.8 m)	28,775 lbf (128 kN)	35,715 – 40,125 lbs (16.2 – 18.2 t)
<b>EW180D</b>	169 hp (126kW)	0.88 – 1.34 yd <sup>3</sup> (0.68 – 1.03 m <sup>3</sup> )	17,400 lbs 20'/5' ft	7.9 t 6.0 / 1.5 m	31' 4" (9.5 m)	20' 1" (6.1 m)	30,574 lbf (136 kN)	39,900 – 44,750 lbs (18.1 – 20.3 t)
<b>EW210D</b>	169 hp (126 kW)	1.08 – 1.47 yd <sup>3</sup> (0.83 – 1.12 m <sup>3</sup> )	18,300 lbs 20'/5' ft	8.3 t 6.0 / 1.5 m	32' 7" (9.9 m)	21' 3" (6.5 m)	33,500 lbf (149 kN)	43,430 – 50,265 lbs (19.7 – 22.8 t)

# VOLVO ULTRA HIGH REACH DEMOLITION EXCAVATOR



## Volvo Engine, Tier 4i

- High power/torque at low rpm hydraulic pumps provide full flow at low rpm
- High-capacity, variable speed engine cooling fans run as required to keep engine at maximum efficiency

## Performance Enhancements

- Hydraulic enhancements include increased pump flow, swing and travel cycle times, higher attachment speed
- Durability refinements for main frame, reinforced undercarriage, strengthened reduction gearbox of swing and travel motors
- Hydraulically removable counterweight with extra weight system
- Forward and rearview cameras are standard equipment and enhances job site safety

## Serviceability

- Easily accessed hatches and service areas, remote fluid drains and easy filter replacements

## Frame

- Robotically welded frame is strategically reinforced on both upper and lower structures
- Chrome pins with brass bushings & graphite inserts are used on boom foot and boom cylinders

## Volvo Care Cab

- Best-in-class cab filtration, adjustable seat, armrests, air conditioning, excellent visibility
- Monitoring systems include Contronics (constant machine diagnostics), MATRIS (operational information) & CareTrack (GSM/satellite monitoring)



# ULTRA HIGH REACH DEMOLITION EXCAVATORS



	3 Piece Boom			
	Engine HP (net) SAE J1349	Operating Weight	Max Pin Height	Max Tool Weight
<b>EC380DHR</b>	279 hp (208 kW)	97,700 - 105,000 lbs (44.4 - 47.6 t)	69' 2" (21.0 m)	6,600 lbs (3.0 t)
<b>EC480DHR</b>	343 hp (256 kW)	115,910 - 124,720 lbs (52.6 - 56.6 t)	89' 9" (27.4 m)	6,600 lbs (3.0 t)
<b>EC700BHR</b>	424 hp (316 kW)	179,590 - 195,020 lbs (81.5 - 88.5 t)	95' 2" - 105' 0" (29.0 - 32.0 m)	7,700 lbs (3.5 t)

# VOLVO PIPELAYERS



## Volvo Engine, Tier 4i

- High power/torque at low rpm hydraulic pumps provide full flow at low rpm
- High-capacity, variable speed engine cooling fans run as required to keep engine at maximum efficiency

## Hydraulics

- Load Management System– Visually Communicates Load Conditions –Boom Light Bar and In-Cab Display
- Work modes match hydraulic speed & power in different applications - heavy, general, fine control, idling
- Best In Class Lifting Capacity– Handles up to 50 ton tipping capacity

## Serviceability

- Easily accessed hatches and service areas, remote fluid drains and easy filter replacements

## Frame

- Robotically welded frame is strategically reinforced on both upper and lower structures
- Conversion to Crawler Excavator (Optional Boom Allows Higher Machine Utilization)
- Chrome pins with brass bushings & graphite inserts are used on boom foot and boom cylinders
- Slew Lock (Prevents Rotation of Upper Structure on Steep Slopes Under Heavy Conditions)

## Volvo Care Cab

- Best-in-class cab filtration, adjustable seat, armrests, air conditioning, excellent visibility & anti-glare LCD color monitor with rearview camera
- Monitoring systems include Contronics (constant machine diagnostics), MATRIS (operational information) & CareTrack (GSM/ satellite monitoring)

## 360 Degree Rotation

- High Performance Lifting and Placing

	Engine HP (net) SAEJ1349	Maximum Tipping Capacity	Maximum Rated Capacity	Operating Weight
<b>PL3005D</b>	227 hp (169 kW)	112,000 lbs (51,000 kg)	68,340 lbs (31,000 kg)	78,350 lbs (35,540 kg)
<b>PL4608</b>	315 hp (235 kW)	176,370 lbs (80,000 kg)	110,000 lbs (50,000 kg)	126,708 lbs (57,475 kg)
<b>PL4611</b>	315 hp (235 kW)	242,500 lbs (110,000 kg)	150,000 lbs (68,200 kg)	150,220 lbs (68,140 kg)

# VOLVO BACKHOE LOADERS



## Transmission

- Fully-automatic powershift transmission features four F/R speeds & kickdown for fast shifting from 2<sup>nd</sup> to 1<sup>st</sup> gear (BL70B option), selecting 4<sup>th</sup> will actuate automatic mode

## Hydraulics

- BL70B features closed-center, load-sensing, flow sharing valves coupled with a variable displacement pump which ensures output matching the flow demand

## Versatility

- Optional Loader attachment bracket accepts a full line of tools and attachments including multi-purpose buckets, forks, etc

## Performance

- Outboard wet disc brakes & planetaries, front & rear cast steel axles with improved axle mounting design
- Industry exclusive high-mounted swing cylinders avoid seal contamination from ground contact & lowers potential damage to backhoe hydraulic hoses
- Volvo's swing casting features massive top & bottom yokes with large pivot bushings
- Hydraulic thumb is functional with extendible dipper

## Serviceability

- Ground level servicing, 50 hour grease intervals, tilting oil cooler & full access to hydraulic/transmission coolers
- Maintenance-free extendible dipper

## BACKHOE LOADERS

	Engine	Dig Depth	Loader Lift Capacity	Bucket Capacity	Operating Weight
<b>BL60B</b>	83 – 91 hp (62 – 68 kW)	14'7" – 18'1" (5.52 – 5.60 m)	6,258 lbs (3,020 kg)	1.0 yd <sup>3</sup> (0.76 m <sup>3</sup> )	17,500 lbs (7,937 kg)
<b>BL70B</b>	91 – 98 hp (68 – 73 kW)	14'11" – 18'4" (4.54 – 5.60 m)	7,320 lbs (3,320 kg)	1.3 yd <sup>3</sup> (1.0 m <sup>3</sup> )	19,500 lbs (8,845 kg)

# VOLVO SKID STEER LOADERS AND COMPACT TRACK LOADERS

## Vertical & Radial Lift Offering

## Operator Comfort

(Ergonomics, storage, noise-sealed and pressurized)

## Near 360° Visibility

(Low arm, no mesh on cab door, no loader arm cross member)



## Key Performance

(Levels at those of top 3 competitors: breakout forces, travel speeds, cycle times, etc)

## Side Entry Access

## Performance

- Industry expected options such as: 2-speed, keyless start, radial/vertical path parallel lift, recycling package
- Fuel tank capacities—best in class

## Productivity

- Wheeled and tracked machine offering
- ROC's from 1350lbs. to 3000 lbs.

## Volvo Care Cab

- 12 Cab packages available – 4 each on canopy, cab with heat, and cab with HVAC

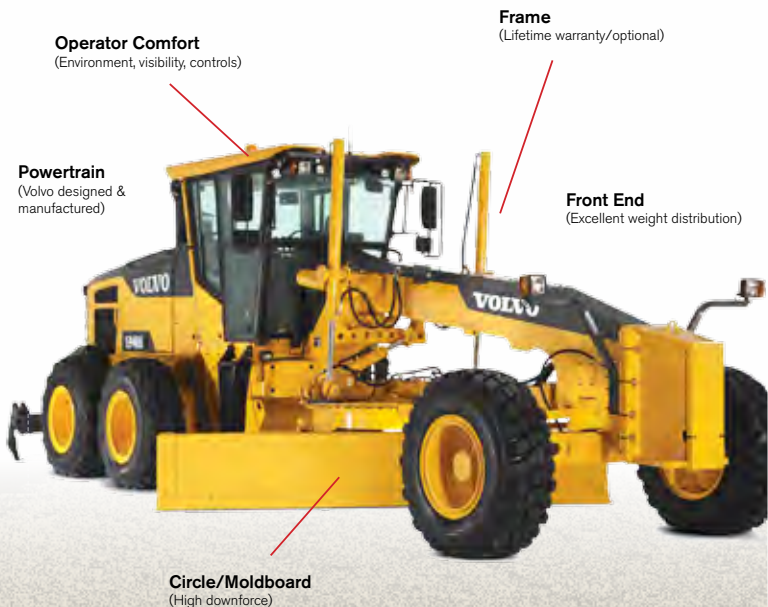
## Serviceability

- Service access is best in class

# SKID STEER LOADERS AND COMPACT TRACK LOADERS

	Engine Net HP	Operating Capacity	Operating Weight	Height to Hinge Pin
<b>MC60C</b>	47 hp (35.1 kW)	1,350 lbs (612 kg)	6,067 lbs (2,752 kg)	9' 10" (3.0 m)
<b>MC70C</b>	59 hp (43.9 kW)	1,550 lbs (703 kg)	6,270 lbs (2,844 kg)	9' 10" (3.0 m)
<b>MC85C</b>	59 hp (43.9 kW)	1,750 lbs (794 kg)	6,636 lbs (3,011 kg)	9' 10" (3.0 m)
<b>MC95C</b>	59 hp (43.9 kW)	1,900 lbs (862 kg)	6,894 lbs (3,127 kg)	9' 10" (3.0 m)
<b>MC110C</b>	74 hp (55 kW)	2,250 lbs (1,009 kg)	7,476 lbs (3,391 kg)	10' 5" (3.2 m)
<b>MC115C</b>	74 hp (55 kW)	2,600 lbs (1,179.3 kg)	7,971 lbs (3,615.6 kg)	10' 5" (3.2 m)
<b>MC135C</b>	92 hp (66.9 kW)	3,000 lbs (1,360.7 kg)	8,430 lbs (3,823.8 kg)	10' 5" (3.2 m)
<b>MCT85C</b>	59 Hp (44.7 kW)	1,900 lbs (862 kg)	8,195 lbs (3,717 kg)	9' 11" (3.0 m)
<b>MCT125C</b>	74 hp (55 kW)	2,600 lbs (1,179.3 kg)	10,205 lbs (4,629 kg)	10' 5" (3.2 m)
<b>MCT135C</b>	92 hp (66.9 kW)	3,000 lbs (1,360.7 kg)	10,663 lbs (4,823 kg)	10' 5" (3.2 m)

# VOLVO MOTOR GRADERS



## Volvo Engine, Tier 4i, B Series

- High torque at low rpm (1100-1600 rpm) - load sensing hydraulic pumps provide full flow at low rpm
- Reversible\*, variable-speed engine cooling fan runs as required to keep engine at maximum efficiency (\*optional)
- Triple power curves provide optimum power at all operating speeds - ability to tailor for specific jobs

## Transmission

- HTE 840 transmission offers automatic downshifting & shuttle shifting - a feature enabling shifts from F/R & R/F without clutching (8 speeds Forward/4 speeds Reverse)
- HTE 840 Autoshift (optional) & HTE 1160 features multiple operating modes - manual/transport (HTE 1160 - 11 speeds Forward/6 speeds Reverse optional)

## Axles & Brakes

- Rear axle differential lock will engage & release using an internal clutch pack with a smoother, faster release
- Four, individual, multiple wet-disc wheel brakes in a dual cross-over system with an electric backup system

## Volvo Care Cab

- Reduced shifter movement for repetitive operations - operator simply moves the shifter straight forward or back to change directions
- Monitoring systems include Contronics (constant machine diagnostics), MATRIS (operational information) & CareTrack (GSM/satellite monitoring)
- Optional joystick controls



	Engine	Net Engine Power	Operating Weight
<b>G930B</b>	D8H / 8.0 L	160 - 208 hp (119 - 155 kW)	34,520 lbs (15,658 kg)
<b>G940B</b>	D8H / 8.0 L	196 - 232 hp (146 - 173 kW)	35,843 lbs (16,258 kg)
<b>G946B</b>	D8H / 8.0 L	224 - 264 hp (167 - 197 kW) <i>*NOTE: AWD engaged</i>	37,827 lbs (17,158 kg)
<b>G960B</b>	D8H / 8.0 L	224 - 264 hp (167 - 197 kW)	38,709 lbs (17,758 kg)
<b>G970</b>	D9B / 9.4 L	210 - 250 hp (156 - 186 kW)	41,660 lbs (18,900 kg)
<b>G976</b>	D9B / 9.4 L	225 - 265 hp (168 - 198 kW) <i>*NOTE: AWD engaged</i>	43,650 lbs (19,800 kg)
<b>G990</b>	D9B / 9.4 L	225 - 265 hp (168 - 198 kW)	48,720 lbs (22,100 kg)

# VOLVO SOIL COMPACTORS

**Safety**  
(Increasing job site safety)

**Visibility**  
(Increasing operator efficiency)

**Operator Comfort**  
(Platforms & controls)

**Serviceability**  
(Increasing uptime)

**Drum Performance**  
(High centrifugal forces and amplitudes)



## Engine

- Tier III/IV-certified diesel engines are environmentally friendly; meet or exceed EPA standards

## Drum Performance

- Multiple frequencies allow precise matching of drum vibration and the natural harmonics of various soils (Except SD25, SD45)
- High centrifugal force promotes fewer passes to obtain maximum density during compaction

## Operator Comfort

- Instrument pedestal, adjustable operator seat and ergonomically designed controls - high comfort & visibility to drum edges (see brochures for options/standards)

## Serviceability

- Ground level access to daily check points, fuel tank, oil dipstick, and hydraulic filters

## Safety

- Spring Applied Hydraulic Release brakes auto-apply if engine stalls or hydrostatic system losses pressure

# SOIL COMPACTORS

	Operating Weight w/ROPS*	Drum Width	Vibration Frequency	Vibration Centrifugal Force
<b>SD25D</b>	5,650 lbs (2,562 kg)	42" (1.0 m)	2,200 vpm (36,7 Hz)	14,020 lbs (62 kN)
<b>SD25F</b>	5,920 lbs (2,685 kg)	42" (1.0 m)	2,200 vpm (36,7 Hz)	12,500 lbs (55.6 kN)
<b>SD45D</b>	10,225 lbs (4,638 kg)	54" (1.4 m)	1,900 vpm (32 Hz)	22,500 lbs (99 kN)
<b>SD45F</b>	11,159 lbs (5,062 kg)	54" (1.4 m)	1,900 vpm (32 Hz)	22,500 lbs (99 kN)
<b>SD70D</b>	15,556 lbs (7,056 kg)	66" (1.68 m)	1,850 – 2,025 vpm (30,8 – 33,8 Hz)	23,300 – 32,100 lbs (104 – 143 kN)
<b>SD70F</b>	17,724 lbs (7,866 kg)	66" (1.68 m)	1,850 – 2,025 vpm (30,8 – 33,8 Hz)	30,300 – 38,500 lbs (135 – 171 kN)
<b>SD77DX</b>	16,350 lbs (7,415 kg)	66" (1.68 m)	1,890 – 2,098 vpm (31,5 – 35 Hz)	23,300 – 32,100 lbs (104 – 143 kN)
<b>SD77F</b>	17,780 lbs (8,063 kg)	66" (1.68 m)	1,890 – 2,098 vpm (31,5 – 35 Hz)	30,300 – 38,500 lbs (135 – 171 kN)
<b>SD100D</b>	23,100 lbs (10,476 kg)	84" (2.1 m)	1,800 – 2,019 vpm (31,2 – 33,6 Hz)	46,300 – 59,300 lbs (206 – 264 kN)

	Operating Weight w/ROPS*	Drum Width	Vibration Frequency	Vibration Centrifugal Force
<b>SD100F</b>	25,100 lb (11,383 kg)	84" (2.1 m)	1,870 – 2,019 vpm (31,2 – 33,6 Hz)	46,300 – 59,300 lbs (206 – 264 kN)
<b>SD105DX</b>	23,700 lb (10,748 kg)	84" (2.1 m)	1,870 – 2,018 vpm (31 – 34 Hz)	46,300 – 59,300 lbs (206 – 264 kN)
<b>SD105F</b>	25,100 lb (11,383 kg)	84" (2.1 m)	1,870 – 2,018 vpm (31 – 34 Hz)	59,000 – 78,000 lbs (267 – 347 kN)
<b>SD116DX</b>	23,930 lb (10,852 kg)	84" (2.1 m)	1,870 – 2,018 vpm (31 – 34 Hz)	47,900 – 61,000 lbs (213 – 271 kN)
<b>SD116F</b>	25,050 lb (11,360 kg)	84" (2.1 m)	1,650 – 2,025 vpm (27,5 – 34 Hz)	59,400 – 61,000 lbs (264 – 271 kN)
<b>SD160DX</b>	35,200 lb (15,964 kg)	84" (2.1 m)	1,850 – 2,025 vpm (30,8 – 33,8 Hz)	59,400 – 76,300 lbs (264 – 339 kN)
<b>SD160F</b>	36,400 lb (16,508 kg)	84" (2.1 m)	1,650 – 2,025 vpm (27,5 – 33,8 Hz)	76,200 – 87,000 lbs (339 – 387 kN)
<b>SD200DX</b>	45,000 lb (20,408 kg)	84" (2.1 m)	1,850 – 1,850 vpm (30,8 – 30,8 Hz)	53,700 – 82,800 lbs (239 – 368 kN)
<b>SD200F</b>	44,500 lb (20,181 kg)	84" (2.1 m)	1,700 – 1,850 vpm (28,3 – 30,8 Hz)	72,600 – 80,800 lbs (323 – 359 kN)

# VOLVO ASPHALT COMPACTORS



## Engine

- Tier III/IV-certified diesel engines are environmentally friendly; meet or exceed EPA standards

## Drum Performance

- High dynamic forces due to patented drum technology - heavy-duty bearings/high-strength welding withstand forces, drum isolators dampen 95% of vibration to frame
- Eight Amplitude Eccentrics: Volvo's design matches rotation of drum's unbalanced weights to the direction of travel - operator selectable (Volvo models include DD70, 90, 118, 138)

## Performance

- Large capacity water tanks with level indicators feature a flow control system designed to optimize water usage

## Operator Comfort

- Superior visibility to drum edges & spray nozzles when seated - no neck fatigue/strain, head is inside ROPS
- Center pivot articulated steering increases maneuvering on tight job sites - drums track each other

## Safety

- Spring Applied Hydraulic Release brakes auto-apply if engine stalls or hydrostatic system loses pressure
- Visibility - operator can see objects which are 1 meter high and 1 meter away from machine at front/side/rear

# ASPHALT COMPACTORS

	Operating Weight w/ROPS*	Drum Width	Vibration Frequency	Vibration Centrifugal Force
<b>CR24</b>	5,742 lbs (2,604 kg)	47" (1.2 m)	4,000 vpm (66,7 Hz)	7,100 lbs (32 kN)
<b>CR30</b>	6,566 lbs (2,978 kg)	52" (1.3 m)	4,000 vpm (66,7 Hz)	7,500 lbs (33 kN)
<b>DD14S</b>	3,350 lbs (1,519 kg)	35.4" (0.9 m)	4,000 vpm (66,7 Hz)	3,500 lbs (15.6 kN)
<b>DD16</b>	3,570 lbs (1,619 kg)	39.4" (1.0 m)	4,000 vpm (66,7 Hz)	4,000 lbs (17.8 kN)
<b>DD25</b>	5,400 lbs (2,450 kg)	39" (1.0 m)	3,300 – 4,000 vpm (55 – 67 Hz)	5,620 – 8,318 lbs (25 – 37 kN)
<b>DD25W</b>	5,725 lbs (2,600 kg)	47" (1.2 m)	3,300 – 4,000 vpm (55 – 67 Hz)	6,295 – 8,992 lbs (28 – 40 kN)
<b>DD29</b>	6,335 lbs (2,873 kg)	49.2" (1.25 m)	4,000 vpm (66,7 Hz)	7,100 lbs (32 kN)
<b>DD31HF</b>	6,840 lbs (3120 kg)	49.2" (1.25 m)	4,200 vpm (70 Hz)	8,200 lbs (36 kN)
<b>DD38HF</b>	8,400 lbs (3,809 kg)	54.1" (1.4 m)	4,200 vpm (70 Hz)	8,200 lbs (36 kN)
<b>DD70</b>	14,875 lbs (6,747 kg)	57" (1.4 m)	3,300 vpm (55 Hz)	8,940 – 17,970 lbs (40 – 80 kN)
<b>DD70HF</b>	14,875 lbs (6,747 kg)	57" (1.4 m)	4,000 vpm (66,7 Hz)	7,820 – 21,080 lbs (35 – 94 kN)

	Operating Weight w/ROPS*	Drum Width	Vibration Frequency	Vibration Centrifugal Force
<b>DD90</b>	21,820 lbs (9895 kg)	66" (1.7 m)	1,850 – 2,500 vpm (30,8 – 41,7 Hz)	5,840 – 26,000 lbs (26 – 115,6 kN)
<b>DD90HF</b>	21,705 lbs (9,845 kg)	66" (1.7 m)	2,850 – 3,800 vpm (47,5 – 63,3 Hz)	16,030 – 38,430 lbs (71,3 – 171 kN)
<b>DD112HF</b>	27,670 lbs (12,548 kg)	78.7" (2.0 m)	3,000 – 4,200 vpm (50 – 70 Hz)	33,090 – 42,070 lbs (147,2 – 187,1 kN)
<b>DD118HF</b>	27,670 lbs (12,548 kg)	78.7" (2.0 m)	3,400 vpm (56,67 Hz)	22,980 – 42,680 lbs (102 – 190 kN)
<b>DD118HFA</b>	27,670 lbs (12,548 kg)	78.7" (2.0 m)	3,000 – 4,200 vpm (50 – 70 Hz)	33,090 – 42,070 lbs (147,2 – 187,1 kN)
<b>DD132HF</b>	30,325 lbs (13,752 kg)	84" (2.1 m)	2,700 – 4,000 vpm (45 – 66,7 Hz)	36,680 – 41,720 lbs (163,2 – 185,6 kN)
<b>DD138HF</b>	30,325 lbs (13,752 kg)	84" (2.1 m)	3,200 vpm (53,3 Hz)	21,840 – 42,260 lbs (97,1 – 188 kN)
<b>DD138HFA</b>	30,325 lbs (13,752 kg)	84" (2.1 m)	2,700 – 4,000 vpm (45 – 66,7 Hz)	36,680 – 41,720 lbs (163,2 – 185,6 kN)
<b>PT125R</b>	9,540 – 27,840 lbs (4,326 – 12,424 kg)	68" (1.7 m)	–	–
<b>PT240R</b>	36218 – 52911 lbs (16,428 – 24,000 kg)	78.7" (2 m)	–	–

# VOLVO ASPHALT PAVERS

**Serviceability**  
(Increasing uptime)

**Material Flow & Management**  
(Maintaining uniform material flow)

**Operator Comfort**  
(Visibility, platforms & controls)

**Safety**  
(Non-slip surfaces,  
3-point contact)

**Traction**  
(Higher productivity  
& flotation)



## Material Management

- Industry exclusive 2-stage hydraulic power tunnels are operated from paver or screed and are synchronized to retract in conjunction with the screed (PF6000s)

## Traction & Flotation

- Best-in-class ground contact from undercarriages - track pavers feature multiple pairs of oscillating bogies - PF6160/PF6170 feature independent load cylinders

## Serviceability

- Ground level serviceability, pinned engine hoods & removable deck plates provide convenient access to vital electric & hydraulic components

# ASPHALT PAVERS

## Pavers

	Paving Width	Engine Make/Model	Propulsion Tracked or Wheeled	Paver Weights
<b>PF2181</b>	8.0' - 21.0' (2,4 - 6,4 m)	Cummins QSB 5.9-30T, 158 hp (117,8 kW)	Wheeled	27,295 lbs (12,381 kg)
<b>PF4410</b>	8.0' - 25.0' (2,4 - 7,6 m)	Cummins QSB 5.9-30T, 158 hp (117,8 kW)	Tracked	30,205 lbs (13,700 kg)
<b>PF6110</b>	10.0' - 26.0' (3,1 - 7,9 m)	Cummins QSB 6.7 Tier 3, 205 hp (153 kW)	Tracked	40,066 lbs (18,174 kg)
<b>PF6160</b>	10.0' - 26.0' (3,1 - 7,9 m)	Cummins QSB 6.7 Tier 3, 205 hp (153 kW)	Wheeled	36,122 lbs (16,385 kg)
<b>PF6170</b>	10.0' - 26.0' (3,1 - 7,9 m)	Cummins QSB 6.7 Tier 3, 205 hp (153 kW)	Wheeled	36,422 lbs (16,521 kg)
<b>P7820C</b>	8.4' - 36' (2,5 - 11 m)	Volvo D8H GEE4 Tier 4i 235 hp (175 kW)	Tracked	34,392 lbs (15,600 kg)
<b>P8820C</b>	8.4' - 42.7' (2,5 - 13 m)	Volvo D8H GEE4 Tier 4i 268 hp (200 kW)	Tracked	39,022 lbs (17,700 kg)

## Screeds

	Screed Width	Standard Paving Width	Paving Depth Range	Screed Heat Type
<b>Omni 1A</b>	8.0' (2,44 m)	8.0 - 13.13' (2,44 - 4,0 m)	.25 - 8" (6,0 - 203 mm)	Diesel
<b>Omni 318</b>	10.0' (3,05 m)	10.00 - 18.5' (3,05 - 5,64 m)	.25 - 12" (6,0 - 305 mm)	Electric
<b>Omni IIIA</b>	10.0' (3,05 m)	10.00 - 18.00' (3,05 - 5,49 m)	.25 - 12" (6,0 - 305 mm)	Diesel
<b>Omni IIIE</b>	10.0' (3,05 m)	10.00 - 18.00' (3,05 - 5,49 m)	.25 - 12" (6,0 - 305 mm)	Electric
<b>Omni 1000</b>	9.8' (3,0 m)	9.8 - 19.7' (3,0 - 6,0 m)	.25 - 12" (6,0 - 305 mm)	Electric
<b>UltiMat 16</b>	8.0' (2,44 m)	8.0 - 16.0' (2,44 - 4,88 m)	.25 - 8" (6,0 - 203 mm)	Electric
<b>UltiMat 20</b>	10.0' (3,05 m)	10.0 - 20.0' (3,05 - 6,1 m)	.25 - 8" (6,0 - 203 mm)	Electric
<b>UltiMat 200</b>	10.0' (3,05 m)	10.0 - 20.0' (3,05 - 6,10 m)	.25 - 8" (6,0 - 203 mm)	Electric
<b>10' Wedge-Lock</b>	10.0' (3,05 m)	10.0' (3,05 m)	.25 - 12" (6,0 - 305 mm)	Diesel or Electric
<b>10' Wedge-Lock w/ 3/6 Hyd. Extns.</b>	10.0' (3,05 m)	10.0 - 16.0' (3,05 - 4,88 m)	.25 - 12" (6,0 - 305 mm)	Diesel or Electric
<b>8' Wedge-Lock</b>	8.0' (2,44 m)	8.0' (2,44 m)	.25 - 8" (6,0 - 203 mm)	Diesel
<b>8' Wedge-Lock w/ 2.5/5 Hyd. Extns.</b>	8.0' (2,44 m)	8.0 - 13.0' (2,44 - 3,96 m)	.25 - 8" (6,0 - 203 mm)	Diesel

## Screeds

	Screed Width	Standard Paving Width	Paving Depth Range	Screed Heat Type
<b>Omni 1A</b>	8.0' (2,44 m)	8.0 – 13.13' (2,44 – 4,0 m)	.25 – 8" (6,0 – 203 mm)	Diesel
<b>Omni 318</b>	10.0' (3,05 m)	10.00 – 18.5' (3,05 – 5,64 m)	.25 – 12" (6,0 – 305 mm)	Electric
<b>Omni IIIA</b>	10.0' (3,05 m)	10.00 – 18.00' (3,05 – 5,49 m)	.25 – 12" (6,0 – 305 mm)	Diesel
<b>Omni IIIE</b>	10.0' (3,05 m)	10.00 – 18.00' (3,05 – 5,49 m)	.25 – 12" (6,0 – 305 mm)	Electric
<b>Omni 1000</b>	9.8' (3,0 m)	9.8 – 19.7' (3,0 – 6,0 m)	.25 – 12" (6,0 – 305 mm)	Electric
<b>UltiMat 16</b>	8.0' (2,44 m)	8.0 – 16.0' (2,44 – 4,88 m)	.25 – 8" (6,0 – 203 mm)	Electric
<b>UltiMat 20</b>	10.0' (3,05 m)	10.0 – 20.0' (3,05 – 6,1 m)	.25 – 8" (6,0 – 203 mm)	Electric
<b>UltiMat 200</b>	10.0' (3,05 m)	10.0 – 20.0' (3,05 – 6,10 m)	.25 – 8" (6,0 – 203 mm)	Electric
<b>10' Wedge-Lock</b>	10.0' (3,05 m)	10.0' (3,05 m)	.25 – 12" (6,0 – 305 mm)	Diesel or Electric
<b>10' Wedge-Lock w/ 3/6 Hyd. Extns.</b>	10.0' (3,05 m)	10.0 – 16.0' (3,05 – 4,88 m)	.25 – 12" (6,0 – 305 mm)	Diesel or Electric
<b>8' Wedge-Lock</b>	8.0' (2,44 m)	8.0' (2,44 m)	.25 – 8" (6,0 – 203 mm)	Diesel
<b>8' Wedge-Lock w/ 2.5/5 Hyd. Extns.</b>	8.0' (2,44 m)	8.0 – 13.0' (2,44 – 3,96 m)	.25 – 8" (6,0 – 203 mm)	Diesel



# VOLVO MILLING MACHINES

## Serviceability

(Displayed in local language instead of codes, walk-in engine compartment)

## Operator Comfort

(LCD panels, easy-to-use)

## Diagnostics

(Displayed in local language instead of codes)

## Three Selectable Milling Speeds

(Maintain milling surface integrity)

## Obstacle Detection

(Increasing job site safety)



## Drum Performance

- Three distinct engine / drum cutting speeds selectable from the operator control station (MT2000)
- Industry-exclusive Line Manager System offers best in class straight line steering and easier handling (MW500)

## Operator Comfort

- Operator consoles incorporate a large, color LCD as standard, to provide the operator with up-to-date machine performance & diagnostic information

## Serviceability

- Hinged roof and drop down stairs provide access to “walk-in” engine & hydraulic system (MT2000)
- Operator control panels offer multiple diagnostic screens for troubleshooting machine performance & service
- Error messages are communicated in phrases, rather than codes for easy understanding

## Safety

- Obstacle detection system stops machine travel if an object greater than 4” is detected in the track’s path while tramming (MT2000)

	Horsepower	Operating Weight	Max Cutting Depth	Max Cutting Width*
<b>MW500</b>	125 hp (93 kW)	20,020 lb (9,100 kg)	8' 3" (210 mm)	19' 8" (500 mm)
<b>MT2000</b>	610 hp (455 kW)	80,930 lb (36,709 kg)	14' 0" (355 mm)	78' 9" (2,000 mm)

\* Optional drum widths available.

# VOLVO SUPPORT STRUCTURE

## Dealer network

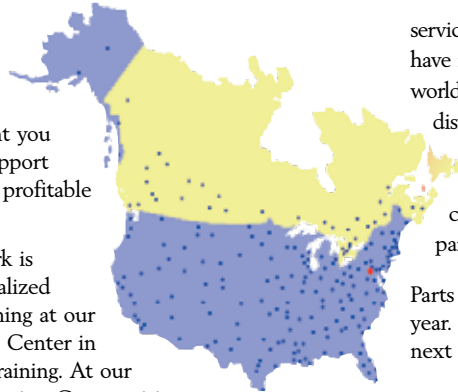
Our dealers are strategically located throughout North America to provide the equipment you need and the parts and service support you demand for a productive and profitable operation.

The strength of our dealer network is enhanced with extensive individualized product and product support training at our state-of-the-art Technical Training Center in Asheville and through hands-on training. At our nearby 75-acre Product Demonstration Center, visitors operate equipment from our entire product line under a variety of simulated working conditions. Both facilities are in use year-round by our dealers and customers – more than 2,000 visit each year.

## Support system

As our product line evolves, so do the product support systems...systems designed to minimize downtime and costs...systems designed to provide essential information on our products.

Our dealer services are fully backed by highly trained regional product sales, marketing and service support personnel, with years of experience in the industry. In addition, all products are supported by trained dealer



service personnel and a strong parts distribution network. Volvo dealers have immediate access to hundreds of thousands of parts through a worldwide computerized network...from the North America parts distribution center in Columbus, Ohio, and from other Volvo Construction Equipment parts facilities around the world. The dealer network also functions as a huge sourcing system for all customers, with each dealer having instant electronic access to the parts inventories of other distributors to fill every need.

Parts support is available 24 hours a day, 7 days a week, 365 days a year. Emergency orders are routinely shipped the same day to arrive the next morning (and sometimes to arrive the same day they are ordered).

## VCE Online

Visit the Volvo Construction Equipment Internet Website and change the way you do business. At the speed of point-and-click. [www.volvoce.com](http://www.volvoce.com)

1. Select your equipment.
2. Do a virtual walkaround.
3. Build and price the equipment.
4. Select your Volvo dealer and request a quote.
5. Take delivery and let's work.



[volvocena @ facebook](#)



[volvocena @ youtube](#)



[volvoce\\_na @ twitter](#)



[volvocena @ flicker](#)

## MATRIS

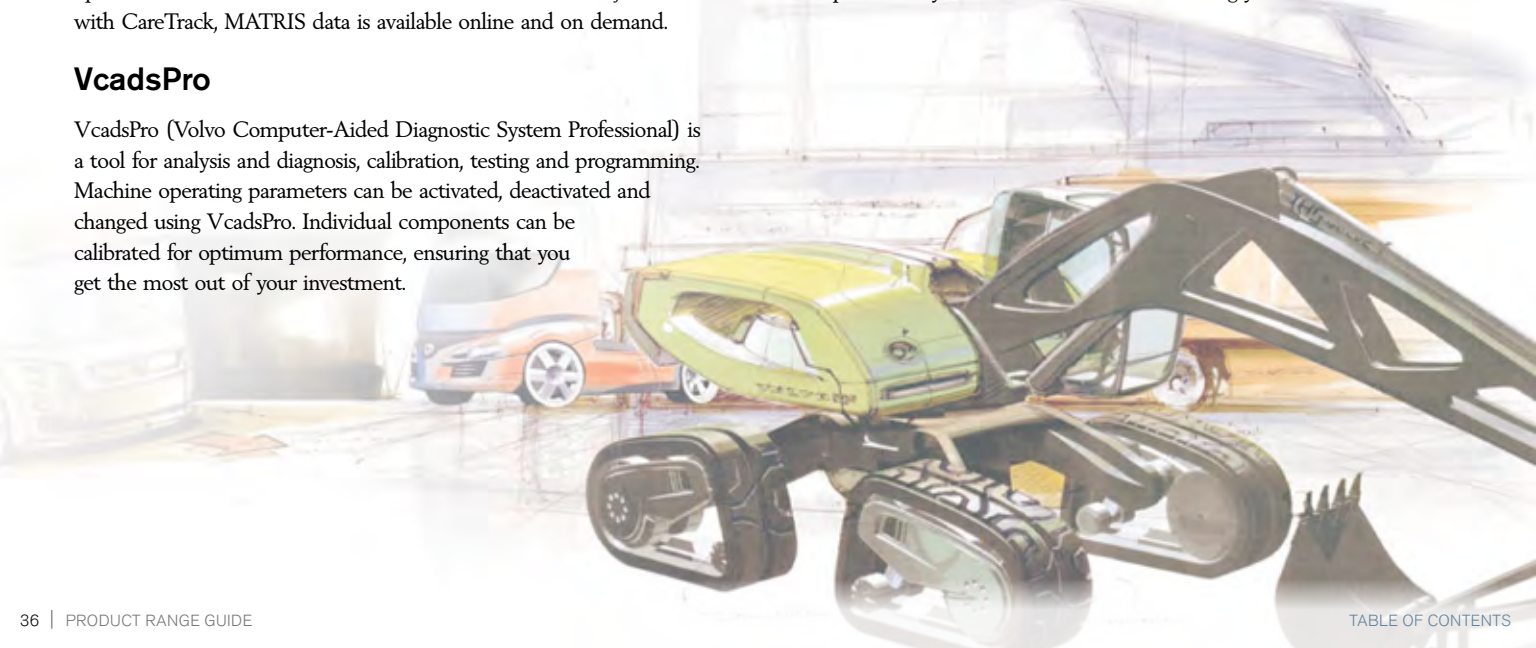
MATRIS (Machine Tracking and Information System) is a PC-based system that provides you with comprehensive machine operation and performance reporting, designed to put you in control of your profitability and efficiency. Information such as idle time, fuel consumption, major component performance and improper machine operation are all available with MATRIS. When used in conjunction with CareTrack, MATRIS data is available online and on demand.

## VcadsPro

VcadsPro (Volvo Computer-Aided Diagnostic System Professional) is a tool for analysis and diagnosis, calibration, testing and programming. Machine operating parameters can be activated, deactivated and changed using VcadsPro. Individual components can be calibrated for optimum performance, ensuring that you get the most out of your investment.

## CareTrack

CareTrack gives you the ability to track your machines and their operation on a secure web site. See on-screen data like fuel consumption, machine utilization, location on the map, fuel level, service reminders, MATRIS operation data and much more. The information you need to help control expenses and maximize your fleet's productivity is available without even leaving your desk.



# THE VOLVO GROUP

Volvo Construction Equipment is a member of the Volvo Group, companies under the corporate flag of AB Volvo, Sweden, and world-leading manufacturers of trucks, buses, construction equipment, marine and industrial engines and aerospace systems and components and a major provider of comprehensive financial services and insurance.



## Volvo Construction Equipment

Volvo provides construction equipment – excavators, wheel loaders, articulated haulers, motor graders, backhoe loaders, skid steer loaders, compact excavators, compact wheel loaders and road building machines – to customers in more than 200 countries. Production facilities are located in Europe, Asia, North America and Latin America. Service and spare parts distribution are offered worldwide. Distribution takes place mainly through independent dealers in parallel with a recently launched equipment rental program.



## Volvo Trucks

Volvo's truck manufacturing operations began in 1928. Today, Volvo Trucks is the world's second-largest producer of heavy trucks. Vehicles of more than 16 tons account for 90% of total production. Volvo Trucks' products are marketed in more than 130 countries, with most sales in Western Europe and North and South America.



## Renault Trucks

Renault Trucks is one of the largest European manufacturers of commercial vehicles, with its origins in the Renault automobile company that was founded in 1895. Renault Trucks offers all types of commercial vehicles, ranging from light trucks for urban distribution services to special vehicles and heavy trucks for long-haul operations.



## Volvo Penta

Volvo Penta provides engines and complete power systems to customers who produce leisure boats, workboats, power-generating equipment and similar industrial applications. Volvo Penta operates worldwide and has one of the industry's strongest brand names and the largest dealer networks with more than 5,000 dealers globally. The engine program comprises diesel and gasoline engines with power outputs of between 10 and 2,000 hp.



## Mack Trucks

Mack Trucks is one of the largest manufacturers of heavy trucks in North America. Mack was founded in 1900, and focused on commercial vehicles from the start. Today, Mack is one of the strongest heavy-truck brands and the indisputable leader in the vocational segment of the North American market. The product program includes heavy and medium-duty trucks, sold and serviced in more than 45 countries worldwide.



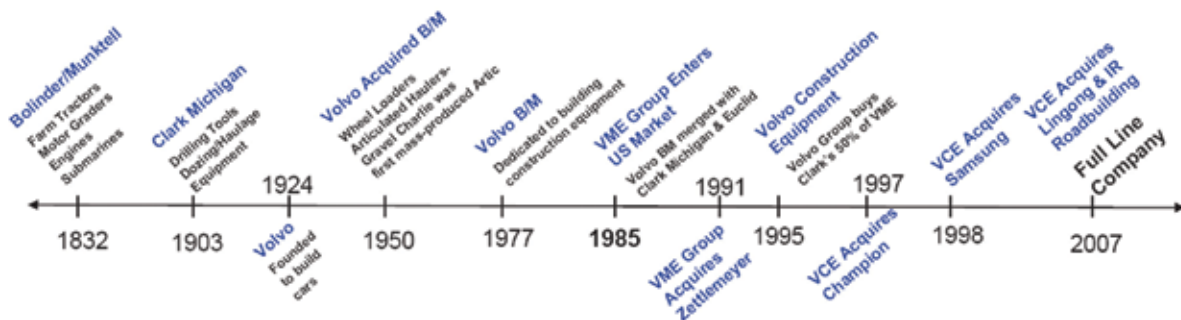
## Volvo Bus

Volvo is the world's second largest bus manufacturer, with a complete range of heavy buses to meet demanding customer requirements for passenger transport solutions. The product range includes complete buses and coaches as well as chassis combined with a comprehensive range of services. Volvo Bus also offers intelligent transport systems in cooperation with Volvo Mobility Systems. Volvo's bus operation has a global presence, with production in Europe, North and South America and Asia.



## Volvo Financial Services

Volvo Financial Services (VFS) develops and coordinates Volvo's operations within customer financing, insurance, treasury, real estate and related services. It is focused exclusively on providing financial services to the Group's internal and external customers. Demand for its services had resulted in the increased diversification of its portfolio and product offerings. Financial solutions created by VFS are designed to enhance the long term competitiveness of the Volvo Group and its dealers.



## VOLVO CONSTRUCTION EQUIPMENT



Volvo Construction Equipment is different. Our machines are designed, built and supported in a different way. That difference comes from an engineering heritage of over 175 years. A heritage of thinking first about the people who actually use the machines. About how to help them be safer, more comfortable, more productive. About the environment we all share. The result of that thinking is a growing range of machines and a global support network dedicated to helping you do more. People around the world are proud to use Volvo. And we're proud of what makes Volvo different.

Not all products are available in all markets. Under our policy of continuous improvement, we reserve the right to change specifications and design without prior notice. The illustrations do not necessarily show the standard version of the machine.

# **VOLVO**

**Volvo Construction Equipment**  
[www.volvoce.com/na](http://www.volvoce.com/na)

Ref. No. VOE2260009017  
Printed in USA 08/12  
Copyright © 2012 Volvo

English  
USA