

FOURTH EDITION
APRIL 2016

AMERICANA OUTDOORS

Presented By

GARMIN.

GARMIN
New Hot Spots
FOR YOUR MAPS

SAWYER
WE KEEP YOU OUTDOORS
PROTECT AGAINST
THE ZIKA VIRUS

YAMAHA
RELIABILITY SPREADS
TO THE MIDWEST



Presented By
GARMIN

A NOTE FROM THE EDITOR

HELLO EVERYONE!

THANKS FOR CHECKING OUT THIS MONTH'S AMERICANA OUTDOORS® E-MAGAZINE. WITH TURKEY SEASON AND TOURNAMENT SEASON WELL UNDERWAY, THE AMERICANA OUTDOORS® TEAM HAS BEEN HARD AT WORK ACROSS THE NATION WITH BASS AND REDFISHING TOURNAMENTS WHILE ALSO TRYING TO GET A FEW RIO GRANDE TURKEYS DOWN ON THE GROUND! WADE JUST GOT BACK FROM THE ACM PARTY FOR A CAUSE IN LAS VEGAS SHOOTING HIS BOW IN THE CABELA'S ARCHERY CONTEST AND IS NOW OFF TO CALL GOBBLERS. CLARK IS BACK FROM THE THIRD STOP OF THE FLW TOUR AND NOW FISHING AND HUNTING ALL OVER. JEFF JUST COMPETED IN THE TXTT ON LAKE TEXOMA, AND I HAVE BEEN CHASING AFTER SOME BEDDING BASS IN CENTRAL TEXAS.

THIS MONTH THE AMERICANA OUTDOORS TEAM HAS COMPILED A GREAT SELECTION OF THE LATEST HUNTING AND FISHING NEWS, VIDEOS, TIPS, AND GEAR THROUGHOUT THE FOURTH EDITION OF THE AMERICANA OUTDOORS® E-MAGAZINE. THROUGHOUT THIS ISSUE, WE'LL CHECK OUT SPRINGTIME BASS TACTICS FROM THE AMERICANA OUTDOORS® TEAM, HOW RANGER BOATS ARE BREAKING NEW BOATING BARRIERS, AND OFFER YOU WAYS TO PREPARE FOR TURKEY SEASON.

ENJOY THE FOURTH EDITION OF THE AMERICANA OUTDOORS® E-MAGAZINE AND AS ALWAYS, GOOD LUCK TO EVERYONE IN THE FIELD AND ON THE WATER!

CODY LEVY

AMERICANA OUTDOORS® STAFF

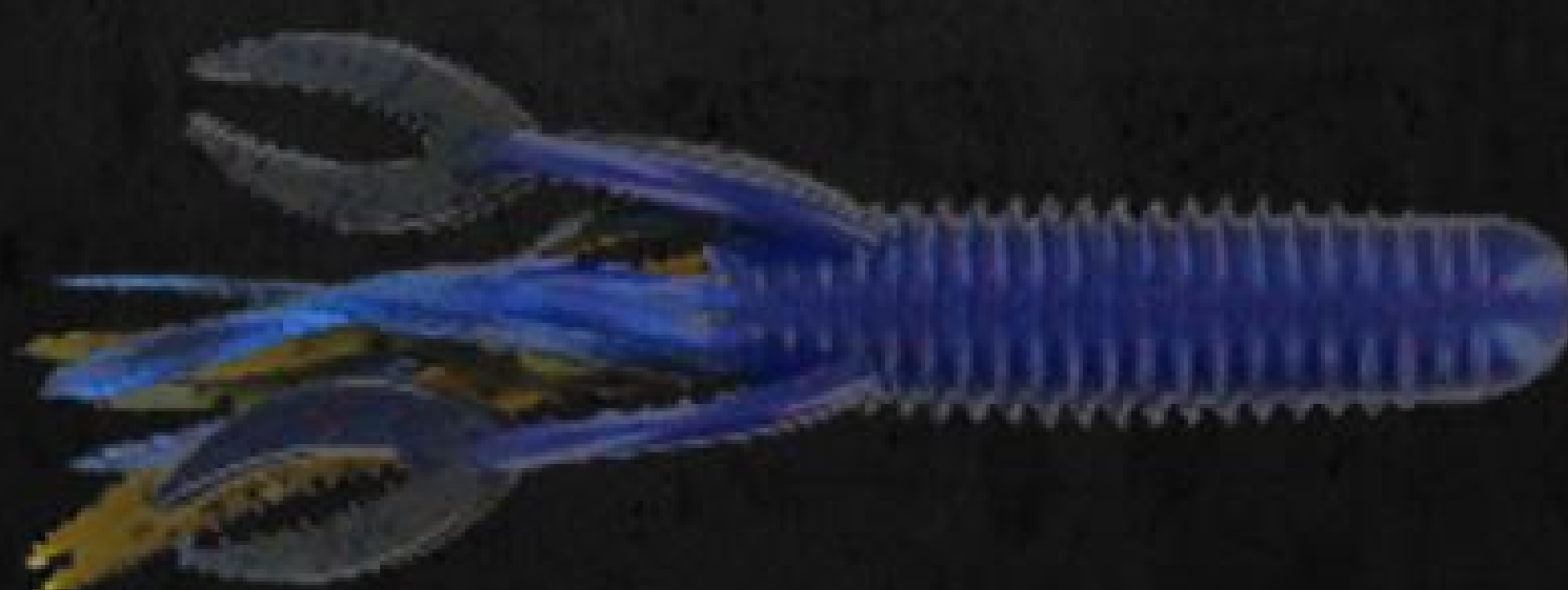


ON THE COVER



AMERICANA OUTDOORS STAFF MEMBER, WADE MIDDLETON, WITH A RIO GRANDE TURKEY!

- 6** SHOOTING TIPS FROM HiVIZ
- 7** THE CABELA'S TACKLE SHOP
- 9** THE ENGEL 30OZ TUMBLER
- 10** ADD FISHING HOTSPOTS TO YOUR GARMIN MAPS
- 11** BOATUS ANNOUNCES 50TH MAGAZINE EDITION
- 12** RANGER BOATS MAKING HISTORY
- 14** WHERE TO AIM ON A TURKEY
- 16** IFA KAYAK TOUR PRESENTED BY HOBIE FISHING
- 17** WHY JASON CHRISTIE USES GARMIN
- 18** NIKON INTRODUCES BDC LOCK TECHNOLOGY
- 20** FISHING SHALLOW FOR SPAWNING BASS
- 22** SUTTING UP WITH GILL
- 24** CABELA'S SCHOOL OF THE YEAR UPDATE
- 27** RANGER ANNOUNCES SPRING SAVINGS
- 29** SMITH & WESSON PERFORMANCE CENTER
- 30** OUTSMARTING THE BIRD
- 32** SAWYER INSECT REPELLENT AND THE ZIKA VIRUS
- 34** YAMAHA RELIABILITY SPREADS TO THE MIDWEST
- 35** STEALTHCAM PRESENTS NEW G34 PRO
- 36** BIG BITE BAITS BACK FOR THE 2016 SEASON
- 38** THE TOOL SHED





Brought to you by

GARMIN

FIND AMERICANA OUTDOORS® ONLINE AT:



Presented By

GARMIN

WWW.AMERICANAOUTDOORS.COM

AMERICANA OUTDOORS



@AMERICANA_OUTDOORS

@LIVE_AMERICANA



AMERICANAOUTDOORS1



WWW.CARECOTV.COM



WADE MIDDLETON



CLARK WENDLANDT



JEFF REYNOLDS



CODY LEVY

Click on the link above for a complete bio from each of the staff!

SEE WHAT YOU'VE BEEN MISSING™

HIVIZ®
SHOOTING SYSTEMS

SHOOTING TIPS FROM HiViz SHOOTING SYSTEMS

STRENGTHEN YOUR SHOTGUN SKILLS THIS TURKEY SEASON WITH SHOOTING TIPS FROM
HiViz SHOOTING SYSTEMS!



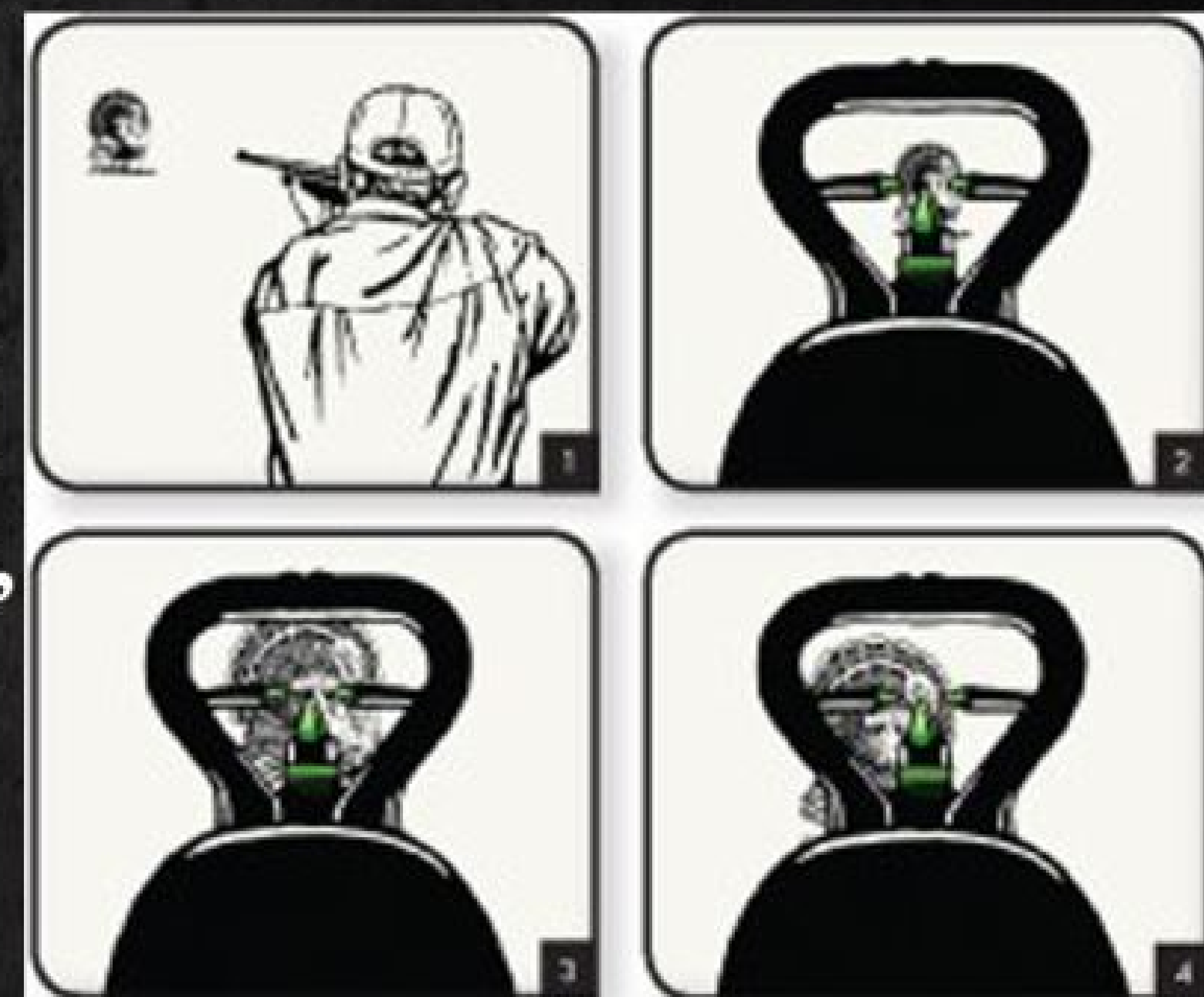
SHOOTING TIP #1: DETERMINE EYE DOMINANCE

WITH BOTH EYES OPEN POINT YOUR INDEX FINGER AT AN OBJECT ACROSS THE ROOM. NOW CLOSE YOUR LEFT EYE. IF YOU ARE STILL POINTING AT THE OBJECT, AS IN #3, YOU ARE RIGHT EYE DOMINANT. IF IT APPEARS YOU ARE POINTING TO THE SIDE OF THE OBJECT, AS IN #4, YOU ARE LEFT EYE DOMINANT. THERE ARE VARYING DEGREES OF EYE DOMINANCE, BUT THIS IS THE MOST BASIC TEST. PREVIOUS SOLUTIONS TO CROSS-EYE DOMINANCE RANGED FROM SWITCHING SHOULDERS TO OBSCURING THE VISION OF THE OFFENDING EYE. MAGNI-OPTIC TECHNOLOGY SOLVES IT INSTANTLY.

SHOOTING TIP #2: USING THE TriViz AS A RANGEFINDER

IN ADDITION TO THE ACCURACY ADVANTAGES OF THE TriViz SIGHT, IT HAS THE ABILITY TO FUNCTION AS A RANGEFINDER FOR TURKEY HUNTERS. SHOULD THE SHOTGUN AS THE BIRD APPROACHES AND ESTABLISH YOUR SIGHT PICTURE. WHEN THE TURKEY'S BODY FILLS THE REAR SIGHT FRAME, AN AVERAGE-SIZED TOM IS WITHIN RANGE.

DRAW A BEAD ON THE BIRD'S HEAD AND...WELL, YOU KNOW THE REST.



SHOOTING TIP #3: KEEP YOUR CHEEK AGAINST THE STOCK

IF YOU WANT TO STOP LIFTING YOUR HEAD WHEN YOU SHOOT, TRY THIS: PLACE A \$20 BILL BETWEEN YOUR CHEEK AND THE STOCK AND AGREE WITH YOUR BUDDY THAT IF IT HITS THE GROUND, HE GETS TO KEEP IT. REPEAT AS NECESSARY. THE WORSE YOUR HEAD-LIFTING HABIT, THE MORE EXPENSIVE THE LESSON. FOR SOME PEOPLE, THE LESSON ONLY COSTS \$20... OTHERS REQUIRE HUNDREDS OF DOLLARS.

EVERY HIVIZ® SIGHT IS SHOOTER-TESTED AND GUARANTEED TO WITHSTAND THE TEST OF TIME. FROM THE STURDY STEEL BASE TO THE NEW CHEMICAL-RESISTANT LITEPIPE™ MATERIAL, WE STAND BEHIND OUR PRODUCTS 100%, OFFER PERSONALIZED CUSTOMER SERVICE, AND BACK IT UP WITH A ONE YEAR WARRANTY.

TO VIEW THE WHOLE LINEUP OF HiViz SHOTING SYSTEMS OR TO CHECK OUT MORE SHOOTING TIPS,
[CLICK HERE](#)

Cabela's *THE CABELA'S TACKLE SHOP*

AT CABELA'S TACKLE SHOP, THEY'RE PROUD TO PROVIDE THEIR CUSTOMERS WITH A MORE PERSONAL FISHING EXPERIENCE. IT'S TRUE YOU'LL FIND THE VERY BEST SELECTION OF TACKLE IN EVERY ONE OF THE CABELA'S STORES, BUT YOU'LL ALSO FIND LOCAL KNOWLEDGE AND EXPERTISE OF THE WATERS THAT MATTER MOST TO YOU. AT CABELA'S YOU'LL FIND THAT SAME EXPERTISE AND KNOWLEDGE AT YOUR FINGERTIPS WHEREVER YOU CAN ACCESS THE INTERNET. LEARN ABOUT THE LATEST ADVANCEMENTS IN GEAR, FIND HANDPICKED PRODUCTS FOR FISHING POPULAR SPECIES, AND GET EXPERT FISHING TIPS.



NOTHING COMPARES TO THE THRILL OF A SUDDEN STRIKE. WHETHER YOU'RE PUNCHING THROUGH THICK MATS FOR TROPHY LARGEMOUTH, MATCHING THE HATCH TO FOOL A NATIVE CUTTHROAT, WORKING A MARABOU JIG THROUGH CRAPPIE-FILLED TREES OR TROLLING A SPINNER OVER A ROCK PILE FOR WALLEYE, CABELA'S HAS THE SELECTION AND EXPERTISE TO MAKE YOUR TRIP A SUCCESS. FISH WITH CABELA'S AND START REELING IN MEMORIES THAT WILL BE CHERISHED FOR A LIFETIME.

GET OVER TO THE CABELA'S TACKLE SHOP
BY CLICKING THE LINK TO THE RIGHT!





SMOKED SALMON IN THE BRADLEY SMOKER

WONDERING HOW TO COOK THAT SALMON IN YOUR FREEZER, CAUGHT EARLIER THIS YEAR? CHECK OUT HOW YOU CAN SMOKE YOUR SALMON TO PERFECTION WITH THESE SIMPLE INGREDIENTS IN THE BRADLEY SMOKER! WITH THE INGREDIENTS LISTED BELOW, FOLLOW ALONG AS BRADLEY SMOKER'S TED READER SHOWS YOU HOW TO GET THE BEST FLAVORS OUT OF YOUR CATCH!

INGREDIENTS

**CINNAMON STICKS
BLACK PEPPER
BROWN SUGAR
SOY SAUCE
WHITE AND BLACK SESAME SEEDS**

**RICE WINE VINEGAR
CHILI POWDER
MARIN
LEMON ZEST
FRESH GINGER**



ENGEL Coolers

ENGEL 30oz CERAKOTE COLOR TUMBLER



CERAKOTE IS NOTED FOR ITS DURABILITY, CORROSION RESISTANCE, CHEMICAL RESISTANCE, HARDNESS, FLEXIBILITY, ADHESION, UV RESISTANCE AND FRICTION REDUCTION PROPERTIES, ALL OF WHICH MAKE IT UNMATCHED IN THE COATING INDUSTRY.

ENGEL'S 30 OZ, STAINLESS STEEL, VACUUM-INSULATED PERFORMANCE MUGS ARE BUILT TO KEEP YOUR COOL IN THE HARSHTEST CONDITIONS. TAKING ADVANTAGE OF THE LATEST VACUUM TECHNOLOGY, THESE CUPS PERFORM UP TO 6% BETTER THAN ANY COMPETITOR ON THE MARKET.

WHETHER YOU'RE BRINGING A HOT OR COLD DRINK ALONG FOR THE RIDE, THE ENGEL "KETCH-IT" LID WILL ENSURE YOU ENJOY YOUR DRINK, NOT WEAR IT. THE LIQUID-TIGHT SEAL KEEPS YOUR DRINKS IN THE CUP WHEN THE BOAT BOUNCES, THE TRUCK SWERVES...OR YOU JUST HAPPEN TO EXECUTE A PERFECT-FORM ELBOW-SWEEP AND TAKE THAT CUP FROM VERTICAL TO HORIZONTAL IN THE BLINK OF AN EYE. **AND...** THAT YOU CAN SHAKE UP THAT DRINK THAT REQUIRES...A LITTLE SHAKIN'...

JUST LIKE OUR AWARD-WINNING COOLERS, WE'VE THOUGHT OF THE DETAILS THAT MATTER. THIS CUP WILL BE YOUR BEST FRIEND FOR ALL OF LIFE'S THIRST-QUENCHING MOMENTS.

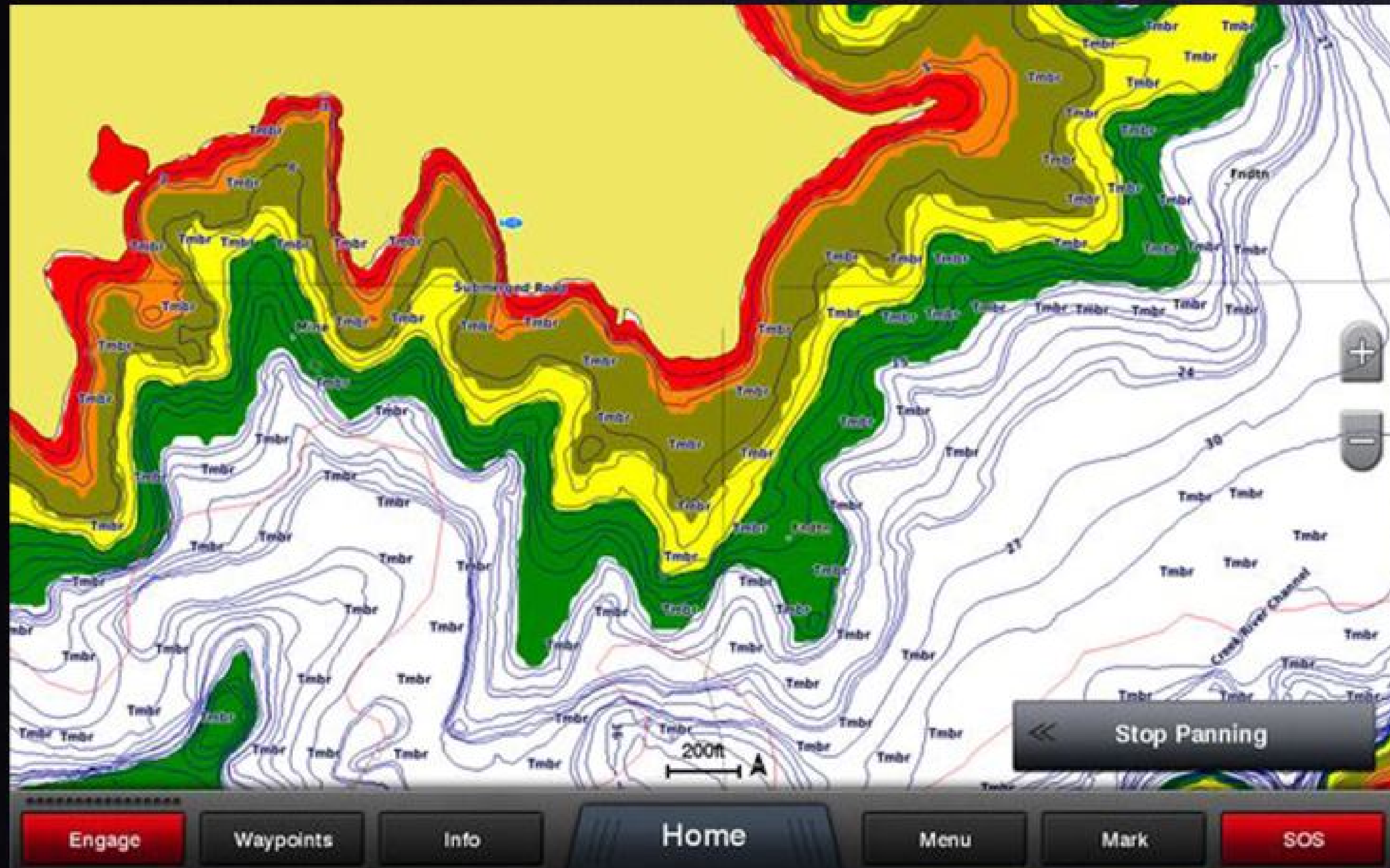
SHAKE UP THAT COCKTAIL...WE GOT YA COVERED.



▶ ⏩ 🔊 0:17 / 1:22

CC 🔊 HD 📺

ADD FISHING HOT SPOTS PRO TO YOUR GARMIN LAKEVÜ MAPS



EVER GO TO A LAKE YOU'VE NEVER FISHED BEFORE? OF COURSE YOU HAVE! HERE AT GARMIN, WE'RE ALL ABOUT MAKING LIFE EASIER FOR YOU BY SAVING YOU TIME. THAT'S WHY WE'VE PARTNERED WITH FISHING HOT SPOTS TO PROVIDE YOU WITH VALUABLE FISHING INFORMATION FOR YOUR GARMIN CHARTPLOTTERS.

INCLUDED ARE HUNDREDS OF THOUSANDS OF POINTS OF INTEREST SUCH AS: LAKE-SPECIFIC TIPS AND TECHNIQUES, CREEK CHANNELS,

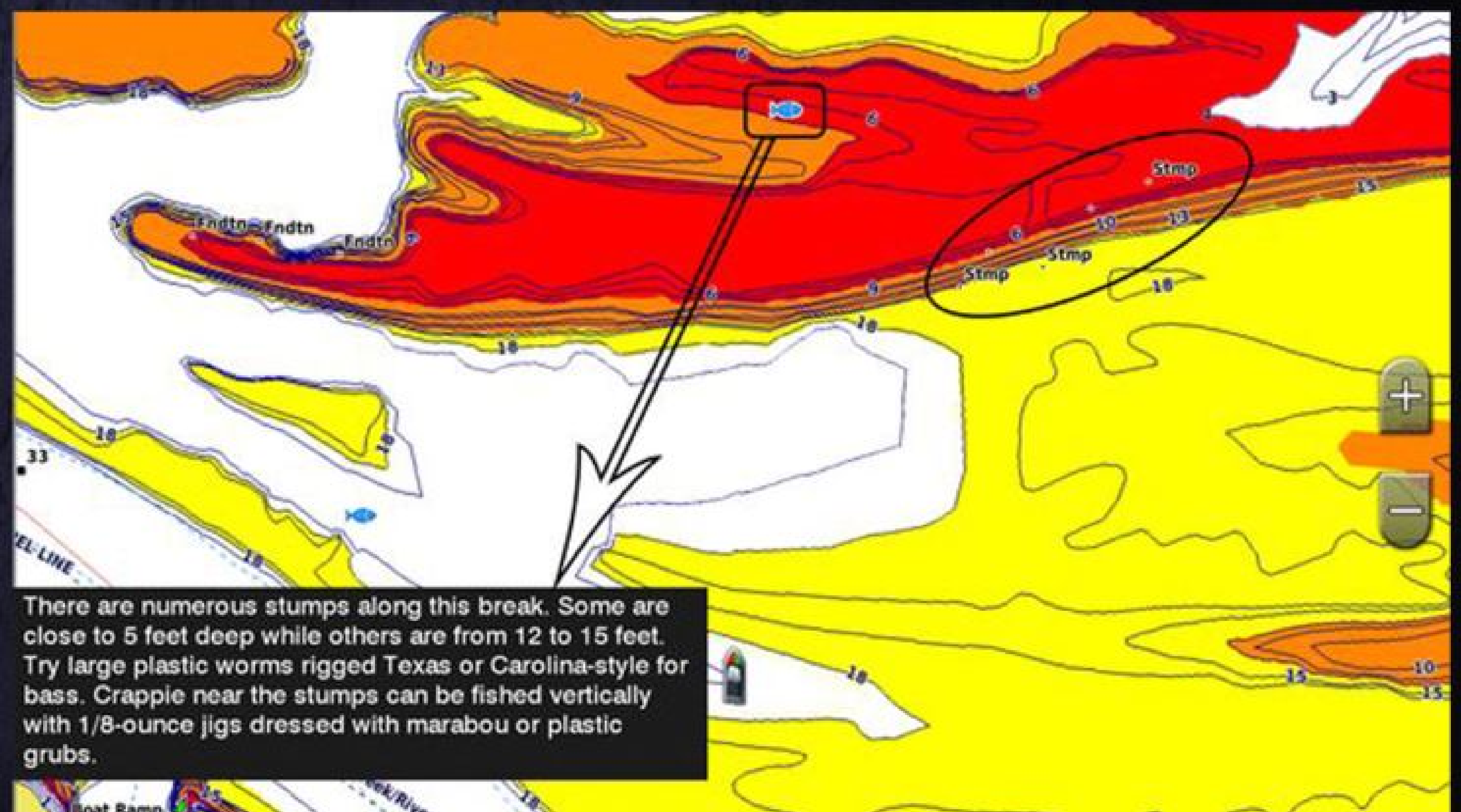
BRUSH PILES, ROADBEDS, SUBMERGED STRUCTURE, TIMBER, FOUNDATIONS AND VEGETATION. COMBINE THIS WITH THE LATEST SOFTWARE UPDATE TO ADD DEPTH RANGE SHADING AND MANY MORE AMAZING FEATURES TO HELP YOU LAND THE FISH OF A LIFETIME.

UPGRADE THE PRELOADED LAKEVÜ HD MAPS FOR YOUR ECHOMAP COMBO UNITS AND COMPATIBLE GPSMAP SERIES CHARTPLOTTER WITH FISHING HOT SPOTS PRO FOR GARMIN. IT IS CURRENTLY AVAILABLE TO DOWNLOAD TO A SD OR MICROSD CARD AND WILL SOON BE AVAILABLE TO PURCHASE ON A PRE-LOADED CARD DIRECTLY FROM GARMIN.

IF YOU WANT TO COMBINE FISHING HOT SPOTS PRO FOR GARMIN WITH EVEN GREATER DETAILED MAPPING, WE WILL SOON BE ADDING FISHING HOT SPOTS PRO TO ALL NEW LAKEVÜ HD ULTRA CARDS (ESTIMATED AVAILABILITY IN Q2).

READ MORE ABOUT FISHING HOT SPOTS PRO FOR GARMIN [HERE](#).

FOLLOW GARMIN FISH & HUNT ON SOCIAL MEDIA FOR VIDEOS, TIPS FROM PROS AND ARTICLES TO HELP YOU BECOME A BETTER ANGLER.



MARINE BLOG

MAPS BLOG



BOATUS MAGAZINE ANNOUNCES 50TH ANNIVERSARY EDITION

IF YOU WANTED TO LOOK BACK AT THE LAST 50 YEARS OF BOATING, WHAT WOULD IT LOOK LIKE? TURN TO THE JUST RELEASED APRIL/MAY 2016 ISSUE OF BOATUS MAGAZINE AND YOU'LL FIND THE ANSWER. TO CELEBRATE THE NATIONAL BOATING ADVOCACY, SERVICES AND SAFETY ORGANIZATION'S 50TH ANNIVERSARY, THE SPECIAL ISSUE INCLUDES A TRIP DOWN MEMORY LANE WITH A LOOK AT THE INNOVATIONS, THE PEOPLE, AND THE BIG NEWS OF THE LAST 50 YEARS IN BOATING.

TWO FEATURES THAT SHARE THE HISTORY OF RECREATIONAL BOATING:

"TIMELINE 1966-2016" SHARES 50 YEARS OF BOATING INNOVATION, RECORDS AND TOP NEWS ACROSS THE WORLD OF BOATING AND FISHING. THROUGH IT ALL, BOATUS HAS BEEN FIGHTING THE GOOD FIGHT, WITH POLICY, SAFETY AND CLEAN WATER VICTORIES. [CLICK HERE TO VIEW.](#)

"LEADERS AND LEGENDS": THE WORLD OF BOATING HAS ATTRACTED IMPRESSIVE INDIVIDUALS WHO'VE HELPED TO MAKE THIS THE LIFESTYLE WE ENJOY TODAY. BOATUS SELECTS 50 OF THE BOATING WORLD'S MOST PROVOCATIVE INNOVATORS AND NEWSMAKERS, AND PRESENTS 27 BEHIND-THE-SCENES PROFILES TO ENTERTAIN AND INSPIRE. ADDITIONAL PROFILES WILL FOLLOW IN UPCOMING ISSUES. [CLICK HERE TO VIEW.](#)

BOATUS MAGAZINE IS THE NATION'S LARGEST-CIRCULATION BOATING MAGAZINE WITH MORE THAN A HALF MILLION READERS, AND IS AN EXCLUSIVE MEMBER BENEFIT.

ABOUT BOAT OWNERS ASSOCIATION OF THE UNITED STATES (BOATUS):

CELEBRATING 50 YEARS IN 2016, BOATUS IS THE NATION'S LARGEST ORGANIZATION OF RECREATIONAL BOATERS WITH OVER A HALF MILLION MEMBERS. WE ARE THE BOAT OWNERS' VOICE ON CAPITOL HILL AND FIGHT FOR THEIR RIGHTS. WE HELP ENSURE A ROADSIDE BREAKDOWN DOESN'T END A BOATING OR FISHING TRIP BEFORE IT BEGINS, AND ON THE WATER, WE BRING BOATERS SAFELY BACK TO THE LAUNCH RAMP OR DOCK WHEN THEIR BOAT WON'T, DAY OR NIGHT. THE BOATUS INSURANCE PROGRAM GIVES BOAT OWNERS THE SPECIALIZED COVERAGE AND SUPERIOR SERVICE THEY NEED, AND WE HELP KEEP BOATERS SAFE AND OUR WATERS CLEAN WITH ASSISTANCE FROM THE NON-PROFIT BOATUS FOUNDATION FOR BOATING SAFETY AND CLEAN WATER. VISIT BOATUS.COM.





SEEING RANGER BOATS' HISTORY IN THE MAKING

Not often will you see a company break through barriers that people have never even thought of before, but Ranger Boats did just that with their new Ranger 522D. Made to tackle big waters, the 522D stands at a 22' 7" in length with a 100 1/2" beam. As their largest bass boat ever made, Ranger Boats has given consumers more features than ever before. To name a few, the Ranger 522D has a 56 gallon fuel tank to make long runs, a 31 gallon live well capacity to hold your days catch, and a 300 max horsepower capacity to get you running! Check out each individual feature of the Ranger 522D in the clip below!



For more information, visit
www.rangerboats.com!





GO HUNT. WE'LL CARRY THE GUN.

CHECK OUT THE GT™ PREMIUM PADDED CARTRIDGE SLING'S TAPERED DESIGN EMPHASIZES WIDTH AT THE LOAD-CARRYING POSITION TO SPREAD WEIGHT OVER A GREATER AREA. INTEGRATED THUMB LOOP RELIEVES TENSION ON YOUR HAND AND FOREARM AS WELL AS STABILIZING THE FIREARM. NON-SKID DURABLE LONG-WEARING MATERIAL HOLDS JUST ENOUGH TO KEEP THE FIREARM IN PLACE WITHOUT INHIBITING YOUR ABILITY TO QUICKLY SHOULDER YOUR FIREARM. INDIVIDUAL SHELL LOOPS KEEP YOUR EXTRA AMMO READILY HANDY.



AND DON'T FORGET ABOUT THE SWIVELS!



IN THE END THOUGH, IT'S NOT JUST A SWIVEL, IT'S YOUR SWIVEL. THE ONE THAT HOLDS YOUR FAVORITE DUCK GUN ON YOUR TREK OUT TO THE BLIND WHEN YOUR HANDS ARE COLD AND FULL OF DECOYS. IT'S THE SWIVEL THAT SECURES YOUR GRANDDAD'S PRE-64 .300 H&H ELK RIFLE THAT HE

GAVE TO YOU SO MANY YEARS AGO. IT'S THE SWIVEL THAT YOU TRUST TO HOLD THAT BRAND NEW EXPENSIVE WEATHERBY RIFLE ON YOUR ONCE-IN-A-LIFETIME AFRICAN SAFARI. EVERY SWIVEL WE MANUFACTURE CARRIES WITH IT NOT ONLY OUR NAME, BUT THE TRUST THAT YOU, OUR CUSTOMER, PUTS IN IT TO HOLD YOUR FIREARM SAFELY AND SECURELY. THE GTSW-01 1" LOOPS IN BLACK-OXIDE FINISH FEATURE SUPERIOR MACHINING TOLERANCES, ALL-STEEL CONSTRUCTION AND PREMIUM FINISH DEFINE THIS SWIVEL. NEW DESIGN INCLUDES ERGONOMIC FREESPIN SLEEVE FOR ADDED SECURITY. OUR MOST POPULAR SWIVEL SET.

WHERE TO AIM ON A TURKEY

By WADE MIDDLETON

IT'S EITHER TURKEY SEASON FOR MANY OF US RIGHT NOW OR IT WILL BE SOON!

THAT'S A FAVORITE TIME FOR SEASONED HUNTERS AS WELL AS AN EXCITING TIME FOR NEW HUNTERS. THE SOUND OF TOMS GOBBLING AND HENS PURRING IS SOMETHING THAT NEVER GETS OLD FOR ME.

FOR A FIRST TIMER, I CAN ONLY IMAGINE IT'S AN OPERA OF SOUNDS THEY NEVER EVEN KNEW EXISTED. OFTEN TIMES I'VE SEEN NEW HUNTERS HAVE A LOOK OF

CONFUSION, BEWILDERMENT, AND AMAZEMENT IN REGARD TO WHAT IS ALL THAT NOISE THAT THE TURKEYS ARE MAKING. I'VE EVEN SEEN SOME SO AMAZED BY THE SIGHTS AND SOUNDS

THAT A BIG OLE TOM STRUTS IN AND OUT OF THEIR LIFE BEFORE THEY CAN REACT. PERSONALLY, THAT'S OKAY AS IT'S PART OF THE EXPERIENCE.



SO WHERE DO YOU AIM....

THE HEAD AND NECK IS THE MOST PREFERRED SPOT. YOU MIGHT ASK WHY NOT THE BODY? PERSONALLY, I WANT TO ALWAYS AVOID SHOOTING AT THE BODY OF A TURKEY. THE MAIN REASON FOR ME FOR NOT SHOOTING A TURKEY IN THE BODY, IS WE'LL BE USING SMALL-SIZED SHOT (4 TO 6 SHOT) AND DESPITE ITS ABILITIES TO PENETRATE DEEP INTO THE BODY CAVITY THE PELLETS WILL LOSE POWER AS THE SHOT PASSES THROUGH A GOBBLER'S THICK FEATHERS, AS WELL AS ITS BIG MEATY CHEST BEFORE MAKING IT TO THE HEART AND OTHER VITAL ORGANS. I FEEL THAT MAKES IT A VERY LOW PERCENTAGE FOR GETTING A CLEAN KILL AND MOSTLY YOU GET A WOUNDED BIRD THAT RUNS AWAY. TRACKING A WOUNDED TURKEY IS A PRETTY FUTILE TASK I'VE LEARNED OVER THE YEARS. ANOTHER REASON YOU DON'T AIM AT THE CHEST IS THAT'S WHERE THE BEST MEAT IS AND YOU WILL TEAR IT ALL UP, THUS RUINING DINNER. BEING SOMEONE WHO LIKES TURKEY FOR DINNER I DON'T WANT TO RUIN IT.

ANOTHER PART OF THE EXPERIENCE IS LEARNING TO HUNT TURKEYS. MANY TIMES I GET QUESTIONS ALONG THESE LINES OF WHERE DO I AIM ON A TURKEY? WHEN SHOULD I SHOOT AT A TURKEY? WHEN SHOULD I NOT TAKE A SHOT? NOW KEEP IN MIND THAT AT THE MOMENT OF TRUTH YOU'LL BE THE ONE TAKING THE SHOT, SO FIRST AND FOREMOST I WANT YOU TO BE AS COMFORTABLE AS POSSIBLE IN WHAT YOU'RE DOING. IF YOU'RE NOT COMFORTABLE THEN DON'T TAKE THE SHOT, LET HIM WALK ON BY AND GET HIM NEXT TIME AS IT'S BETTER TO DO THAT THAN TO WOUND A BIRD. SO TO ANSWER SOME OF THOSE QUESTIONS LET'S MOVE ALONG.

SO THAT LEAVES US TO DISCUSS THE PREFERRED AIMING SPOT WHICH IS THE HEAD AND NECK OF TOM. WHILE THE HEAD IS SMALL, IT CONTAINS THE BRAIN AS WE ALL KNOW AND WITHOUT THE BRAIN NOTHING ELSE WORKS, SO PUT A FEW PELLETS IN THERE AND YOU'LL BE PUTTING YOUR TAG ON A TOM. THE NECK IMMEDIATELY BELOW THE HEAD IS ALSO WHERE THE SPINE CONNECTS AND IT CONTAINS THE NERVES AND BLOOD VESSELS THAT CIRCULATE BLOOD TO THE SPINE AND THE REST OF THE ORGANS. ONCE AGAIN HITTING A TOM HARD IN HEAD AND NECK IMMEDIATELY STOPS THE FLOW UPON IMPACT. WITH EXCEPTION OF A FEW REFLEXES, FLOPPING AND SUCH THE BIRD IS FEELING NO PAIN AND GENERALLY HAS EXPIRED WITHIN AN INSTANT OF IMPACT.



NOW THAT WE ALL KNOW WE WANT TO AIM AT THE TURKEY'S HEAD AND NECK, I WOULD LIKE TO IMPART ONE PIECE OF ADVICE TO HELP AVOID MISSES AS I LIKE TO PICK A SPOT AND NOT JUST A GENERAL AREA. I ALWAYS SUGGEST THAT YOU AIM RIGHT ABOVE THE LINE OF FEATHERS THAT JOIN THE FLESHY PART OF GOBBLER'S NECK. THIS ALLOWS THE SPREAD OF SHOT TO COVER THE ENTIRE AREA WHERE THE HEAD AND NECK WILL BE WHILE AVOIDING THE BREAST. THIS AIMING POINT, JUST WHERE THE FEATHERS START, WILL ALLOW YOU SOME ROOM FOR ERROR AND GIVE YOU A POINT TO FOCUS ON AND AIM.

NOW THAT YOU KNOW WHERE TO AIM HOW DO YOU KNOW WHEN TO SHOOT? THE UNDERSTANDING OF WHEN IT'S TIME TO TAKE THE SHOT AND WHEN THEY SHOULD WAIT FOR A BETTER SHOT IS TOUGH TO DISCUSS AS EVERY SITUATION IS DIFFERENT. I WANT TO ALWAYS WAIT IF THE GOBBLER IS IN FULL STRUT AS IT'S A LOW PERCENTAGE BASED ON OUR THOUGHTS ABOVE. I WANT TO BE READY FOR THE SHOT -I WANT TO BE AIMING AT THE BIRD AS HE STRUTS IN BUT I DON'T WANT TO TAKE THAT SHOT. THE REASON BEING IS THAT WHEN A TOM IS STRUTTING HE HAS BLOWN UP HIS BODY SO TO SPEAK BY PUFFING HIS FEATHERS OUT AND WHEN HE DOES THAT HE PULLS HIS HEAD AND NECK DOWN TIGHT AGAINST ITS PUFFED OUT CHEST. WHEN HE IS IN THAT STRUTTING POSTURE HE BASICALLY HAS MADE THE PREFERRED TARGET AREA MUCH SMALLER. GENERALLY SPEAKING, THIS SHOT ENDS WITH A LOT OF SHOT IN THE BREAST, BEARD BLOWN OFF AND OR A WOUNDED BIRD. SO I'VE GOT TO BE PATIENT AND READY FOR THE TOM TO GIVE ME THAT FULL NECK AND HEAD SO FOR ME THAT MEANS WHEN THE TOM'S NECK IS FULLY EXTENDED, LIKE THE ONE ABOVE.

TO GET THE SHOT ON THE NECK AND HEAD ON A BIRD THAT IS IN FULL STRUT YOU HAVE TO WAIT AND GET THE BIRD OUT OF STRUT. TO DO SO A SOFT CALL CAN OFTEN BE MADE THAT CAUSES THE BIRD TO COME OUT OF STRUT, BUT IN DOING SO THE BIRD IS OFTEN AT FULL ALERT AND WONDERING WHAT'S GOING ON AND IS GETTING READY TO RUN OFF. THE HUNTER MUST BE READY TO TAKE THE SHOT AS THE BIRD WILL STRETCH OUT FULLY WHEN COMING OUT OF FULL STRUT. JUST IMAGINE SOMEONE BEING CURIOUS AT THAT MOMENT AND LOOKING WILDLY AROUND TO SEE WHAT THAT SOUND WAS. REMEMBER, DON'T RUSH THE SHOT, TAKE YOUR TIME, AND IF IT'S ALL GOOD SQUEEZE THE TRIGGER AND IF SOMETHING'S NOT RIGHT LET HIM PASS.

I HOPE THESE TIPS HELP YOU KNOW WHEN TO SHOOT, WHERE TO AIM, AND WHEN TO JUST LET THE MOMENT PASS WITHOUT TAKING A SHOT. FINALLY, TIME IN THE FIELD, LEARNING FROM MISTAKES ALONG WITH SUCCESS, WILL HELP YOU UNDERSTAND WHEN AND WHEN NOT TO MOVE AND TAKE THOSE SHOTS. GOOD LUCK, GOOD CALLING, AND ENJOY THE EXPERIENCE AS MUCH AS THE HARVEST!



THE IFA KAYAK FISHING TOUR PRESENTED BY HOBIE FISHING PREPS FOR THE 2016 SEASON

When you think of kayak fishing, Hobie Kayaks come to mind when it comes to how the exponential growth of the sport has truly been set off. Known as a leading force in kayak fishing, Hobie Kayaks and the IFA Kayak Fishing Tour Presented by Hobie Fishing have given anglers across the nation an opportunity to compete on more than just a grassroots event. The IFA Kayak Fishing Tour Presented by Hobie Fishing offers anglers huge cash and prize payouts while competing at trophy fishing destinations across the country.

Each of the 10 regular season events will feature a catch-photograph-release tournament format. The IFA Kayak Fishing Tour will continue to offer over 100% payout, plus contingency opportunities for anglers at every event. Also, for an additional \$50, anglers can sign up for the Angler's Advantage program, which allows participants to compete in an even higher payout bracket.

The fastest growing kayak fishing tournament trail in the country, the IFA Kayak Fishing Tour Presented by Hobie Fishing offers inshore kayak anglers from a multitude of states the opportunity to participate in competitive fishing tournaments. With low entry fees and minimal travel requirements, kayak anglers competing in the catch-photograph-release tournaments can take advantage of the rich prize structure awarded to competitors.



Whether you compete out of Hobie Paddle Kayak or a Hobie Mirage Pro Angler 14, join the fun in 2016 and register for one of the following events of the 2016 IFA Kayak Fishing Tour Presented by Hobie Fishing Events!

2016 IFA Redfish Tour Schedule

Atlantic Division

May 1 - Georgetown, SC
 Sept. 25 - Georgetown, SC
 Florida East Division
 March 20 - Fernandina, FL
 Aug. 28 - New Smyrna
 Beach, FL

Florida West Division

March 6 - Punta Gorda, FL
 Sept. 11 - Sarasota, FL
 Louisiana Division
 May 15 - Lafitte, LA
 Aug. 7 - Houma, LA

Texas Division

April 3 - Port Aransas, TX
 Aug. 14 - Aransas Pass, TX
 Championship
 Dates and location TBD

GARMIN®

WHY JASON CHRISTIE USES GARMIN



When the name Jason Christie is spoken, bass fishermen tend to quiet down and listen to what's about to be said. As a full time Bassmaster Elite Series touring Pro, Jason Christie is one of the top anglers in fishing industry with wins at all levels of tournament fishing... basically when he talks, everyone listens.

Americana Outdoors® was able to spend time with the Garmin Pro in his office, a tricked out Ranger 520, and while with him we learned more about what leads to his success.

Check out what Jason Christie uses on a daily basis that makes him one of the best bass anglers in the world, in the video above!

For more information on the Garmin Products Jason Christie uses, check out www.garmin.com



NIKON SPORT OPTICS HAS ANNOUNCED THE RELEASE OF SIX NEW RIFLESOPES WITH A DISTANCE LOCK FUNCTION LOCATED IN THE FIRST FOCAL PLANE, WHICH ALLOWS THE RIFLESCOPE TO MAINTAIN ITS SCALE AND DISTANCE PROPORTION ON A TARGET THROUGHOUT THE ENTIRE ZOOM RANGE. THE GREATEST BENEFIT OF THESE NEW BDC DISTANCE LOCK-EQUIPPED RIFLESOPES WILL BE FOR THOSE WHO USE NIKON'S SPOT ON™ BALLISTIC PROGRAM AND BDC RETICLES TO COMPENSATE FOR BULLET DROP AT EXTENDED RANGES.

THE SPOT ON PROGRAM ALLOWS SHOOTERS TO INPUT THEIR SHOOTING CONDITIONS AND BALLISTIC INFORMATION IN ORDER TO FIND THE EXACT POINT OF AIM ON NIKON'S BDC RETICLES (WITH UNIQUE CIRCLES AND HASH MARKS) FOR WHATEVER DISTANCE THEY ARE SHOOTING.

UP UNTIL NOW, ALL OF NIKON'S RIFLESOPES HAVE BEEN IN THE SECOND FOCAL PLANE, WHICH MEANS THAT AS SHOOTERS ZOOM FROM THE LOWEST MAGNIFICATION TO THE HIGHEST, THE RETICLE REMAINS THE SAME SIZE. FOR SPOT ON USERS, THIS HAS MEANT THAT THE AIMING POINTS PROVIDED BY THE POPULAR BALLISTIC APP HAVE BEEN SPECIFIC TO ONE MAGNIFICATION (TYPICALLY THE HIGHEST POWER).

WITH THE NEW BDC DISTANCE LOCK FUNCTION THAT KEEPS EVERYTHING IN THE FIRST FOCAL PLANE, THE AIMING POINTS PROVIDED BY THE SPOT ON APPLICATION WILL BE THE SAME, REGARDLESS OF WHAT MAGNIFICATION THE RIFLESCOPE IS SET AT. THIS IS MADE POSSIBLE BECAUSE WITH A FIRST FOCAL PLANE RIFLESCOPE, THE RETICLE CHANGES IN SIZE AS ONE ZOOMS TO HIGHER OR LOWER MAGNIFICATIONS.

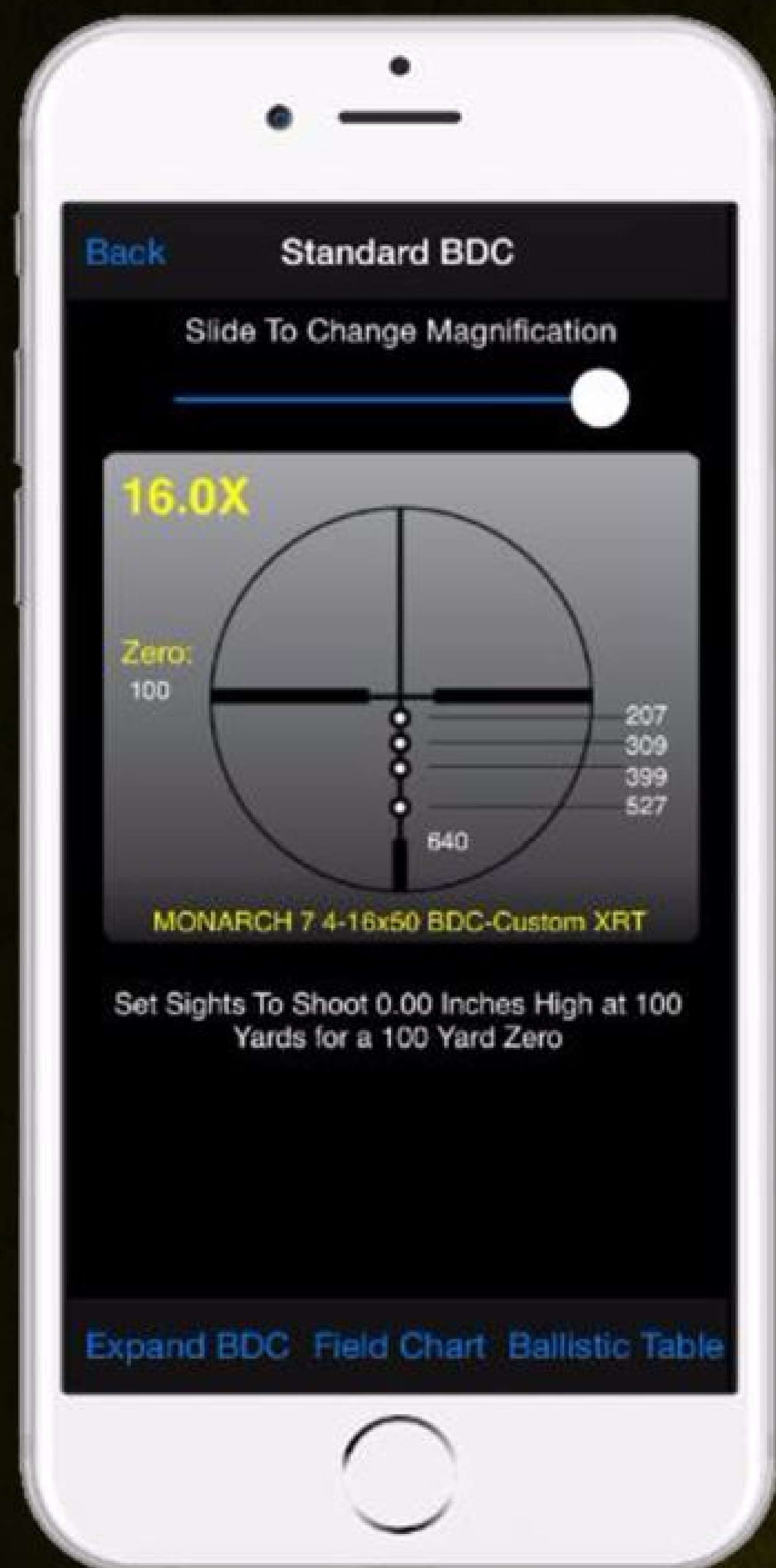


NIKON'S NEW RIFLESOPES WITH THE BDC DISTANCE LOCK FUNCTION INCLUDE:

- MONARCH 3 3-12x42SF MATTE BDC FFP
- MONARCH 3 4-16x42SF MATTE BDC FFP
- MONARCH 3 4-16x50SF MATTE BDC FFP
- PROSTAFF 5 3.5-14x40SF MATTE BDC FFP
- PROSTAFF 5 3.5-14x50SF MATTE BDC FFP
- PROSTAFF 5 4.5-18x40SF MATTE BDC FFP



THE MONARCH 3 AND PROSTAFF 5 BDC DISTANCE LOCK RIFLESOPES ALL FEATURE NIKON'S FULLY MULTILAYER COATED LENSES THAT DELIVER SUPERIOR LIGHT TRANSMISSION FOR BRIGHT, CLEAR IMAGES WITH BALANCED COLOR. THEY ARE BUILT WITH ONE-INCH MAIN BODY TUBES, GENEROUS EYE RELIEF AND A QUICK-FOCUS EYEPIECE FOR EXTREMELY EASY ADJUSTMENT.



THE ELEVATION AND WINDAGE ADJUSTMENTS ARE MADE IN CLICKABLE INCREMENTS OF 1/4-INCH @ 100 YARDS. THE TURRETS ALL HAVE A SPRING-LOADED INSTANT ZERO-RESET FEATURE THAT ENABLES USERS TO LIFT THE TURRET AND RETURN TO THE "ZERO" MARK AFTER SIGHTING IN. THIS FUNCTION NOT ONLY SIMPLIFIES ADJUSTMENTS IN THE FIELD, IT ALSO MAKES IT EASIER TO RELOCATE ONE'S ZERO, SHOULD THE TURRETS GET ACCIDENTALLY TURNED.

THESE RIFLESCOPES ALSO HAVE A SIDE-FOCUS KNOB FOR PARALLAX ADJUSTMENT. THE SIDE-FOCUS KNOB HAS DISTANCES INSCRIBED ON IT, MAKING IT EASY TO QUICKLY FOCUS THE SCOPE FROM A PARTICULAR VANTAGE POINT.

LIKE ALL NIKON RIFLESCOPES, THE MONARCH 3 AND PROSTAFF 5 BDC DISTANCE LOCK RIFLESCOPES ARE OPTIMIZED FOR USE WITH SPOT ON BALLISTIC MATCH TECHNOLOGY. THE SPOT ON PROGRAM PROVIDES USERS WITH EXACT AIMING POINTS ON THE BDC RETICLE FOR ANY LOAD OR AMMUNITION AT A SPECIFIED RANGE. SPOT ON IS FREE ONLINE AT: NIKONSPORTOPTICS.COM/SPOTONAND IS NOW FREE FOR MOBILE DEVICES, INCLUDING THE IPHONE®, IPAD® AND ANDROID™ PLATFORMS.

THE MONARCH 3 AND PROSTAFF 5 RIFLESCOPES ARE

WATERPROOF, FOGPROOF AND SHOCKPROOF FOR EXCEPTIONAL PERFORMANCE UNDER DIVERSE CONDITIONS. THEY ARE BACKED BY NIKON'S LIMITED LIFETIME WARRANTY AND NIKON'S NO-FAULT REPAIR/REPLACEMENT POLICY FOR BINOCULARS, RIFLESCOPES AND FIELDSCOPES. NIKON IS DEDICATED TO QUALITY, PERFORMANCE AND TOTAL CUSTOMER SATISFACTION. IF YOUR NIKON BINOCULAR, RIFLESCOPE, OR FIELDSCOPE REQUIRES SERVICE OR REPAIR NOT COVERED BY OUR LIMITED LIFETIME WARRANTY, JUST SEND IT TO US AND NIKON WILL REPAIR OR REPLACE IT (EXCLUDES PRODUCTS WITH ELECTRIC COMPONENTS, LOST OR STOLEN PRODUCTS AND INTENTIONALLY CAUSED DAMAGE.)



NIKONSPORTOPTICS.COM

FISHING SHALLOW FOR SPAWNING BASS



Presented By
GARMIN.

FOR MANY ANGLERS, THE SPRINGTIME IS THE HIGHLIGHT OF THE SEASON. ANGLERS CAN FIND BIG BASS UP SHALLOW FOR THE SPAWN ALLOWING FOR A WIDE RANGE OF WAYS TO CATCH THEM, AND OVERALL IT IS A DIFFERENT TYPE OF FISHING THAN ANY OTHER TIME OF YEAR.

FOR ANY ANGLERS OUT THERE THAT HAVEN'T EVER FISHED THE SPAWN OR ARE LOOKING TO GET SOME TIPS ON HOW TO BE MORE SUCCESSFUL DURING THIS TIME OF YEAR, LOOK NO FURTHER! BELOW, JEFF REYNOLDS, WADE MIDDLETON, CODY LEVY, AND CLARK WENDLANDT SHARE SOME OF THEIR KNOWLEDGE ON HOW TO GET MORE SUCCESS ON THE WATER.



JEFF REYNOLDS IS A FOUR TIME BASSMASTER CLASSIC QUALIFIER WITH OVER TWENTY YEARS OF TOURNAMENT EXPERIENCE.

WHENEVER HE FISHES THE SPAWN, HE KEEPS A FEW MAIN IDEAS ALWAYS AT THE TOP OF HIS MIND. CHECK OUT WHERE HE STARTS WHEN FISH ARE ON THE BEDS.

“THE FIRST THING I WOULD DO IS AS THE FISH ARE MOVING UP IS PUT THE TROLLING MOTOR DOWN AND START LOOKING. ONE THING YOU WILL REALLY NEED IS A GOOD PAIR OF SUNGLASSES. DIFFERENT SHADES OF POLARIZATION WILL HELP IN DIFFERENT SCENARIOS, BUT POLARIZATION WILL HELP CUT DOWN ON GLARE AND WILL HELP YOU SEE INTO DEEPER WATER,” SAID REYNOLDS.

A TOOL THAT REYNOLDS KEEPS AT HAND ALL THE TIME IS A STOUT ROD WITH A FAST TIP.

“I PREFER THE CABELA'S TOURNAMENT ZX JIG/WORM 7'3" HEAVY ACTION ROD BECAUSE THIS IS GOING TO BE A FLIPPING TECHNIQUE WHERE YOU'RE THROWING HEAVIER LINE AND A BIG HOOK AND I WANT TO BE SURE I HAVE A HEAVY ENOUGH ROD THAT WILL YANK THE HOOK INTO THE FISH'S MOUTH.”

“LOOK ON YOUR MAPPING AND FIND THE AREAS WITH THE BIGGEST FLATS I CAN FIND. SHALLOWER POCKETS WILL FIND THE EARLIER SPAWNING FISH AND LATER IN THE SPAWN YOU'LL LOOK FOR AREAS CLOSER TO THE MAIN LAKE. ONE THING TO REMEMBER - FOR A BASS TO SPAWN, THEY NEED SUNLIGHT. A BASS IS NOT GOING TO BED IN DEEPER, MUDDIER WATER, SO WATER CLARITY WILL ALSO DETERMINE HOW DEEP THE FISH WILL SPAWN. IF THE WATER IS CLEAR THEN YOU'LL USUALLY FIND FISH SPAWNING A LITTLE DEEPER,” SAID REYNOLDS.

WADE MIDDLETON, HOST OF CABELA'S FISHERMAN'S HANDBOOK™ AND AMERICANA OUTDOORS® STAFF MEMBER STATED THAT THERE IS MORE THAN ONE WAY TO CATCH A BASS DURING THE SPAWN, BUT HIS FAVORITE METHOD IS SIGHT FISHING.



DUE TO WIND OR MUDDY WATER, I FISH SLOWLY MAKING MULTIPLE PRESENTATIONS TO SPOTS THAT I THINK A FISH WOULD SPAWN.”

AS AN AVID ANGLER WHO COMPETED IN THE CABELA’S COLLEGIATE BASS FISHING SERIES™ JUST A FEW YEARS AGO, CODY LEVY IS ALSO A FAN OF SIGHT FISHING FOR SPAWNING BASS.

“I LOVE BEING ABLE TO PINPOINT MY TARGET EVERY TIME. HAVING POWER POLES ON YOUR BOAT CAN BE KEY AT TIMES WHEN SIGHT FISHING SO YOU DON’T HAVE TO USE THE TROLLING MOTOR AND WON’T AGITATE THE FISH. ONCE THE POWER POLES ARE DOWN, IT’S TIME TO STUDY UP AND SEE HOW THE FISH REACT SO YOU CAN UNDERSTAND HOW TO CATCH THEM. FOR ME, I ENJOY THE GAME YOU PLAY WITH A BEDDING BASS – YOU HAVE TO WATCH HOW THEY REACT TO SEE IF THEY’RE LOCKED DOWN ON A BED AND WILL STAY THERE FOR HOURS KNOWING YOU’RE THERE, OR TO SEE IF THE SLIGHTEST WATER DISPLACEMENT WILL MOVE THEM OFF. ONCE YOU KNOW HOW THEY REACT, YOU CAN UNDERSTAND WHETHER YOUR BAIT WILL NEED TO SIT ON THE BED FOR A LONG PERIOD OF TIME BEFORE THE FISH RETURNS, OR IF YOU CAN MAKE MULTIPLE PITCHES UNTIL THE FISH GETS ANNOYED AND CHOMPS DOWN!”



THREE TIME FLW ANGLER OF THE YEAR, CLARK WENDLANDT, ADDED SOME OF THE THINGS HE KEYS IN ON DURING THE SPRING IN ORDER MOST EFFECTIVELY FIGURE OUT WHERE THE BASS WILL BE.

“SOME THINGS I REALLY KEY ON ARE FLAT POCKETS OR BAYS THAT ARE FLAT WITH SOME KIND OF ACCESS TO DEEP WATER,” SAID WENDLANDT. “IF THERE IS GRASS I TYPICALLY TARGET HOLES IN THE VEGETATION. IF IT IS SOME KIND OF WOOD THEN YOU HAVE TO FISH THE WHOLE THING TO TRY AND FIGURE OUT WHERE THE FISH WANT TO SPAWN. ANOTHER TIP IS EARLY IN THE SPAWN THE POCKETS, BAYS AND CREEKS FACING TO THE NORTH WILL USUALLY WARM MORE QUICKLY. LATER IN THE SPAWN THE POCKETS FACING TO THE SOUTH MAY BE BETTER. YOU JUST HAVE TO KEEP YOUR EYES ON YOUR TEMPERATURE GAUGE TO FIGURE OUT WHAT IS GOING ON. ONE THING ABOUT IT THOUGH, IT IS A GREAT TIME TO BE ON THE WATER!”

SO HEAD OUT TO YOUR LOCAL LAKE THIS SPRING AND PUT SOME OF THESE TIPS TO USE! BE SURE TO GET YOUR FIX OF ALL FISHING GEAR AND TACKLE AT CABELA’S TACKLE SHOP! ALSO, SHARE YOUR SUCCESS WITH US ON OUR FACEBOOK PAGE AND TELL US HOW YOU DID AT WWW.FACEBOOK.COM/AMERICANAOUTDOORS

Gill®

TECHNICAL FISHING GEAR

***JASON CHRISTIE
SUITS UP WITH
GILL***

FISHING IN COLD WEATHER SEEMS TO ALWAYS GO ONE OF TWO WAYS – EITHER YOU’RE MISERABLE FROM THE COLD, OR YOU WEAR GILL AND NEVER LET THE COLD AFFECT YOUR DAY ON THE WATER. FOR **BASSMASTER ELITE SERIES PRO JASON CHRISTIE**, TAKING DAYS OFF BECAUSE OF THE WEATHER IS NOT REALLY AN OPTION, WHICH IS WHY HE WEARS GILL. WHETHER IT’S A HEAVY DOWNPOUR OR IT’S TWENTY DEGREES, JASON SUITS UP WITH GILL FROM THE BASE LAYER TO THE OUTER LAYER ALLOWING HIM TO CATCH FISH AND NOT A COLD.

CHECK OUT WHAT MAKES GILL THAT MUCH MORE VALUABLE FOR ANGLERS WHO SPEND LONG DAYS ON THE WATER THROUGH THE TOUGHEST CONDITIONS, AS **JASON CHRISTIE** BREAKS DOWN THE NEW 2016 GILL LINEUP IN THE VIDEO BELOW.



FOR MORE INFORMATION ON THE FULL COLLECTION OF GILL RAIN WEAR, PLEASE VISIT WWW.GILLFISHING.COM.

AMERICANA OUTDOORS

Presented By
GARMIN.

WANT TO WIN FREE GUIDED FISHING
AND HUNTING TRIPS ACROSS THE
NATION? AMERICANA OUTDOORS® IS
OFFERING YOU THE OPPORTUNITY TO
FISH AND HUNT WITH THE STAFF FOR
FREE! SIGN UP TO WIN BY CLICKING THE
LINK BELOW!

WIN AN ALL-EXPENSE PAID FISHING TRIP!

**REDFISHING
GIVEAWAY!**

GUIDED BY
AMERICANA
OUTDOORS STAFF
MEMBER,
CODY LEVY



**BASS FISHING
GIVEAWAY!**

GUIDED BY AMERICANA
OUTDOORS STAFF MEMBER,
CLARK WENDLANDT

WIN AN ALL-EXPENSE PAID FISHING TRIP!

**TEXAS TURKEY
HUNT GIVEAWAY!**

GUIDED BY AMERICANA
OUTDOORS STAFF MEMBER,
JEFF REYNOLDS!

WIN AN ALL-EXPENSE PAID HUNT!



WIN AN ALL-EXPENSE PAID HUNT!

**DEER HUNT
GIVEAWAY!**

GUIDED BY AMERICANA
OUTDOORS STAFF
MEMBER,
WADE MIDDLETON!



**AMERICANA
OUTDOORS**

Presented By
GARMIN.

**HOG HUNT
GIVEAWAY!**

**WIN A GUIDED HOG HUNT WITH THE AMERICANA
OUTDOORS STAFF!**

**CLICK HERE
TO ENTER**



THE UNIVERSITY OF ALABAMA GAINS CONTROL OF THE CABELA'S SCHOOL OF THE YEAR RACE

MISSISSIPPI STATE UNIVERSITY AND BRYAN COLLEGE TRAIL IN SECOND AND THIRD RESPECTIVELY

By Cody Levy

With less than three months left in the 2016 Cabela's School of the Year race, schools from across the nation are in pure competition mode, searching for every possible point they can earn to add to their total. As it stands right now, the University of Alabama currently sits in first place with a total of 1481 points, followed by Mississippi State in second with 1466 points, and Bryan College in third with 1452 points.

“It definitely means a lot for us,” said John Davis, President of the University of Alabama Bass Team. “We set our goal as a team to win the School of the Year earlier this season. To see our where we want to be at the top of the rankings right now is really exciting. There aren't too many events left throughout the rest of the year, so it's something that we still have to put a lot of work towards, but we really want to be able to win that top prize at the end of the year.”

Cabela's[®]



Frankie Appaluccio and Logan Shields of the University of Alabama take the lead with 20-3.

“We've got a really good group of guys that really want to win this title. It would mean a lot to us to be number one in the nation and it would really mean a lot for the club,” added University of Alabama Bass Team member, Payton McGinnis.

Reflecting on previous years, Davis understood exactly what kept the University of Alabama Bass Team from winning the Cabela's School of the Year title, which led the team to a change in strategy for 2016.

“The last two years we added it up and we found that if we had sent teams to the ACA events, we would've won the whole thing. This year, we decided we're going to win it. We've sent teams to every event so far and while we might not have won them, we earned valuable points,” said Davis.

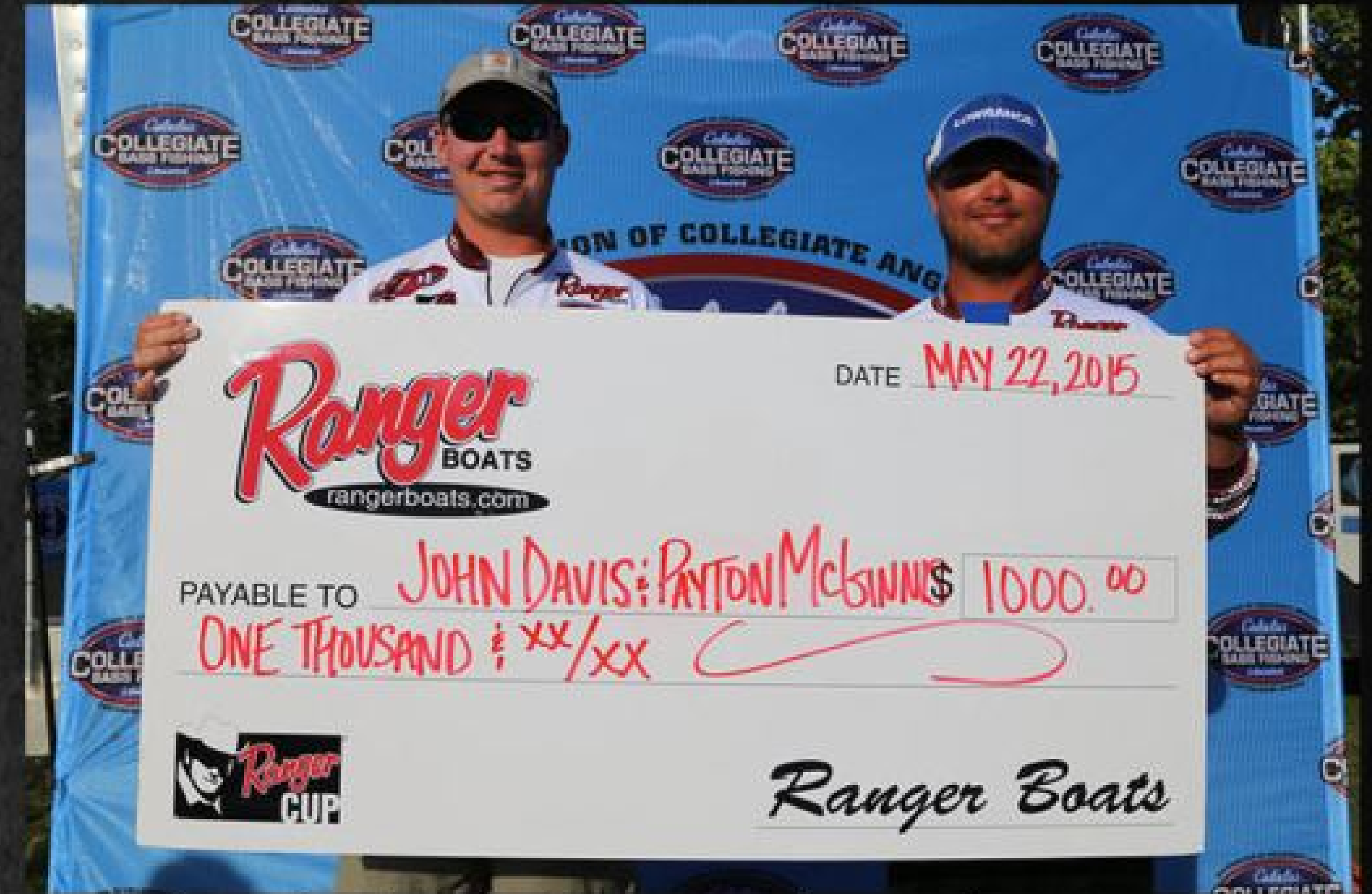
“The ACA Events help us a ton in the Cabela's School of the Year race,” said McGinnis. “We've had pretty decent finishes but really having guys at each event to help us get those double points events really helps us in the race.”

A key Cabela's Collegiate Bass Fishing Series event to take place in the near future is the 2016 BoatUS Collegiate Bass Fishing Championship Presented by Cabela's. As a double points event, the University of Alabama knows the importance of not just ensuring one team finishes well, but ensuring both teams have a high finish in this event.

“The Championship definitely has a big impact. It’s a fun event, Pickwick always fishes well, and it means a lot to do well here, even outside of the points. There are usually around 160 to 170 boats so there are definitely solid points to be earned at this event too. UNA has won the School of the Year title two years in a row and they’re kind of like our in-state rivals, so we’re going to their home lake to try and beat them in the championship and for the title this year,” stated Davis.

McGinnis and Davis are no strangers to this event either as they placed 7th overall in the 2015 championship event. The duo was also awarded the Ranger Cup contingency, which consisted of a \$1,000 check and the opportunity to compete in the Ranger Cup University Challenge on Bienville Plantation in Florida, as they were the highest finishing Ranger Cup qualified team.

“The Ranger Cup was super easy to qualify for as it’s just signing up online for free and meeting the jersey requirements. Ordering jerseys through Gemini jerseys makes it that much easier because they even help you out with logo placement,” said Davis. “A lot more guys are signing up for this contingency so we’ll need a higher finish than seventh this year I would imagine, but we’re definitely going to do our best to win it again.”



The University of Alabama team of John Davis and Payton McGinnis look forward to the remainder of the season with hopes of maintaining their current Cabela’s School of the Year status by finishing well in the BoatUS Collegiate Bass Fishing Championship Presented by Cabela’s.

“This year’s events have gone well for us and it’s definitely reflected that way for us in the points,” added Davis. “Dardanelle was tough but our team was able to come back on the second day and get some solid soy points, and there were a few other events that we could’ve done better in but for the most part we’ve done great as a team and we just need to keep it up.”

“The BoatUS Championship event is something we’ve been looking forward to since last year. Pickwick is a big bass factory. The fish are going to be out on the ledges again and you’re going to catch a ton of fish, meet with all the sponsors, and just enjoy a week of fishing with the best of the best in college fishing. Some of these guys are for sure going to fish professionally and knowing that it just makes you more motivated to put in the time to do well at this event,” said McGinnis.

The remaining Top Ten in the Cabela’s School of the Year Race are as follows:

- 4 University of North Alabama (Florence, AL)
- 5 Bethel University (McKenzie, TN)
- 6 McKendree University (Lebanon, IL)
- 7 Murray State University (Murray, KY)
- 8 Georgia College (Milledgeville, GA)
- 9 University of Louisiana - Monroe (Monroe, LA)
- 10 Louisiana Tech (Ruston, LA)

To see a list of complete School of the Year Rankings, click here: [2016 Cabela’s School of the Year Rankings](#)



WITHOUT DATA, IT'S JUST VIDEO

THE **VIRB XE** ACTION CAMERA SHOOTS RICH, HIGH DEFINITION FOOTAGE AT 1080P/60FPS, 12 MEGAPIXEL PHOTOS AT UP TO 30FPS, AND CAPTURES EVEN MORE OF YOUR ACTION WITH **G-METRIX™**. POWERED BY **GARMIN GPS**, **G-METRIX** ALLOWS YOU TO TRACK AND OVERLAY HOW FAST, HOW FAR, HOW HIGH, AND HOW INTENSE THE MOMENT TRULY WAS. AND, **VIRB X** AND **VIRB XE** ARE ABLE TO DIVE TO 50 METERS WITHOUT A CASE, ALLOWING YOU TO CAPTURE CLEANER AND CLEARER VIDEO AND AUDIO.



G-METRIX™ SYSTEM

RETELL YOUR STORY IN GREATER DETAIL THAN EVER BEFORE USING OUR FREE MOBILE AND DESKTOP SOFTWARE AND **G-METRIX**. ADD PRESET GAUGES, GRAPHS AND TRACK SHAPES — AUTOMATICALLY SYNCHED TO YOUR VIDEO AND TAILORED FOR YOUR ACTIVITY — OR BUILD YOUR OWN WITH OUR FREE **GAUGE BUILDING TOOL**. **VIRB X** AND **VIRB XE** CAMERAS FEATURE BUILT-IN **GPS** BASED SENSORS AS WELL AS WIRELESS CONNECTIVITY TO OTHER **GARMIN** DEVICES FOR A WHOLE NEW LEVEL OF PERFORMANCE DATA COLLECTION.

MOUNTS: CRANK 'EM DOWN AND GO MAN, GO

A VARIETY OF VERSATILE MOUNTS LET YOU FIRMLY LOCK THE CAMERA IN POSITION. FROM CURVED, FLAT DECK AND DASH MOUNTS TO HANDLEBAR, SEATPOST, HELMET, CHEST AND MULTI-USE STRAP MOUNTS, WE HAVE YOU COVERED. **VIRB** MOUNTS FEATURE PROFESSIONAL, NON-SLIP, ALLEN HEAD TIGHTENING, ALLOWING MAXIMUM TORQUE FOR VIBRATION/IMPACT RESISTANCE. A UNIVERSAL ADAPTOR LETS YOU MOUNT **VIRB X** AND **VIRB XE** TO MANY AFTERMARKET AND INDUSTRY STANDARD MOUNTS.

GARMIN
VIRB X & XE

TELL A BETTER STORY





RANGER BOATS ANNOUNCES 2016 SPRING SAVINGS CELEBRATION SALES PROMOTION

Includes \$1,100 Combined Retail Value with Qualifying, In-Stock Purchase

FLIPPIN, Ark. – Ranger Boats is providing even more incentives for boating families and multi species anglers with the announcement of a limited-time-only Spring Savings Celebration sales promotion featuring \$1,100 in combined retail value with a qualifying purchase.

The lucrative promotion runs March 1 to May 1, 2016 and is applicable towards the purchase of any new, in-stock Ranger VS1680 or VS1780. A qualifying purchase during the promotional time frame will receive two (2) custom Mustang inflatable life vests (valued at \$600) plus a \$500 credit towards premium Ranger clothing and accessories available through RangerWear.com.

The program incentive is limited to the purchase of new, in-stock Deep-V models powered by Evinrude, Mercury, Yamaha or Suzuki engines sold during the promotional timeframe. No other offers can be combined with the promotion.

For more information on the Spring Savings Celebration sales promotion or to see the 2016 Ranger lineup, contact a local Ranger Boats dealer or visit www.rangeraluminum.com.

About Ranger Boats

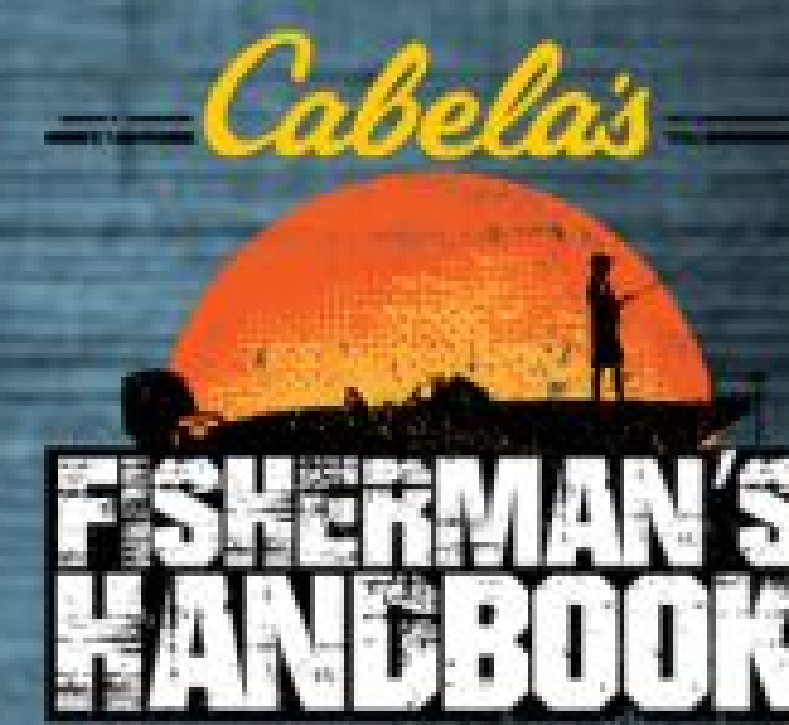
Headquartered in Flippin, Ark., Ranger Boats is the nation's premier manufacturer of legendary fiberglass and aluminum fishing boats, which include series of bass, multi-species, fish 'n play, waterfowl utility and saltwater boats. Founded in 1968 by Forrest L. Wood, Ranger Boats continues its commitment to building the highest-quality, strongest-performing boats on the water. For more information, go to www.RangerBoats.com.

SPRING SAVINGS Celebration
ALUMINUM DEEP V SERIES
WE'RE GIVING AWAY **\$1,100*** WHEN YOU PURCHASE A NEW IN-STOCK RANGER® ALUMINUM DEEP V
2 MUSTANG INFLATABLE LIFE VESTS \$600 VALUE
RANGER® WEAR MERCHANDISE CARD \$500 VALUE
Ranger Boats



ROKU

CHECK OUT ALL OF THESE GREAT SHOWS ON THE NEW OUTDOOR ACTION TV CHANNEL ON ROKU!

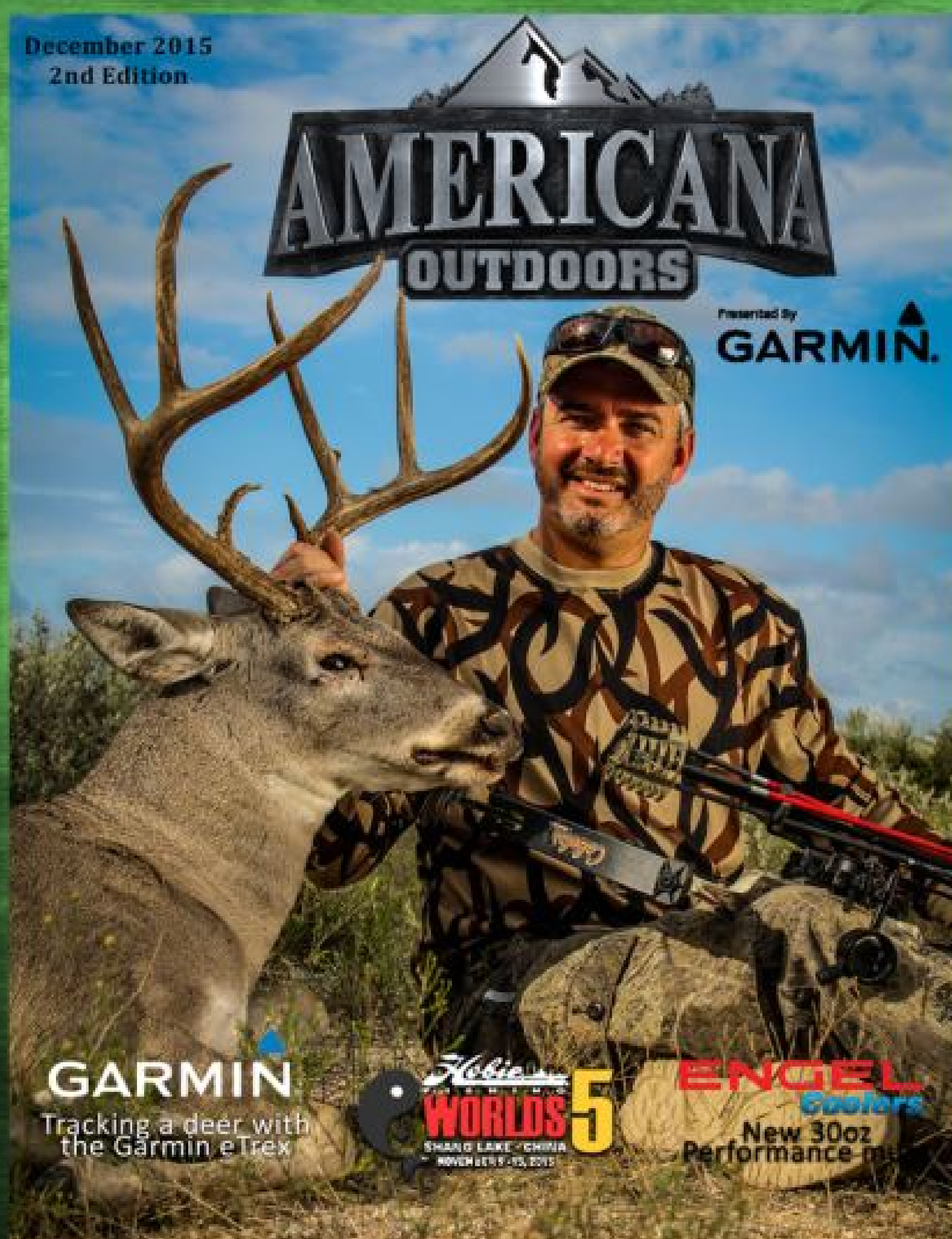


If you have content that you are interested in hosting on Outdoor Action TV, contact CARECOTV LLC at 210-697-8081 or email HELLO@OUTDOORACTION.COM



Presented By **GARMIN.**

CHECK OUT ALL EDITIONS OF THE AMERICANA OUTDOORS E-MAGAZINE!



Smith & Wesson® Performance Center



HUNTING WITH HANDGUNS, SMITH & WESSON STYLE

IN 2003 THE GUNSMITHS AND ENGINEERS AT SMITH & WESSON WANTED TO DELIVER MAXIMUM POWER FOR SERIOUS HANDGUN HUNTERS. THE POWER THEY SOUGHT REQUIRED

AN ENTIRELY NEW FRAME, THE MASSIVE "X-FRAME™," AND WAS THE BASIS FOR THE

NEW MODEL S&W 500™, THE MOST POWERFUL PRODUCTION REVOLVER IN THE WORLD. THIS USHERED IN THE ERA OF THE "BIG GUN" AND WAS ONLY THE BEGINNING. FOR ULTIMATE POWER AND VELOCITY THERE'S NOTHING EVEN CLOSE TO AN X-FRAME MODEL HANDGUN.



**MODEL: S&W 500™
S&W MAGNUM**

- **HIVIZ® SIGHTS, INTERCHANGABLE COMPENSATOR**
- **MOST POWERFUL PRODUCTION REVOLVER IN THE WORLD TODAY**
- **MASSIVE .500 S&W MAGNUM® CARTRIDGE - 2600 FT/LB. MUZZLE ENERGY**
- **A HUNTING HANDGUN FOR ANY GAME ANIMAL WALKING**
- **REMOVABLE HIGH EFFICIENCY COMPENSATOR**



SPECS:

CAPACITY: 5 ROUNDS

BARREL LENGTH: 8.38" / 21.3 CM

FRONT SIGHT: LIGHT GATHERING HI-VIZ® RED DOT

REAR SIGHT: ADJUSTABLE

GRIP: SYNTHETIC

ACTION: SINGLE/DOUBLE ACTION

FRAME: EXTRA LARGE

FRAME SIZE: EXTRA LARGE - EXPOSED HAMMER

FINISH: SATIN STAINLESS

OVERALL LENGTH: 15" / 38.1 CM

MATERIAL: STAINLESS STEEL FRAME

STAINLESS STEEL CYLINDER

WEIGHT EMPTY: 72.5 OZ.

OUTSMARTING THE BIRD: TURKEY HUNTING WITH AMERICANA OUTDOORS® STAFF



WHEN IT COMES TO FEELING A RUSH, AMERICANA OUTDOORS STAFF MEMBERS JEFF REYNOLDS, WADE MIDDLETON, AND CLARK WENDLANDT EACH FEEL SOMETHING COMPLETELY ADDICTIVE WHEN TURKEY HUNTING. FROM MOVING FROM SPOT TO SPOT, TO CALLING IN THE BIRDS, TO CLAIMING SUCCESS AFTER THE SHOT, THESE THREE PROS EXPLAINED JUST WHAT MAKES TURKEY HUNTING SUCH AN ADDICTION.

I LOVE TO BE ABLE TO MOVE AROUND AND INTERACT WITH THE ANIMALS, WHICH MAKES TURKEY HUNTING ONE OF MY FAVORITES. THIS IS MORE OF A PHYSICAL HUNT THAT I ENJOY. THERE'S SOMETHING ABOUT GETTING UP EARLY IN THE MORNING AND HEARING THE TURKEYS FLY OUT OF THEIR ROOST THAT JUST MAKES MY TOES TINGLE.

OUT OF ALL THE CALLS THAT I'VE USED, I PREFER TO USE A MOUTH CALL. ONE OF MY REASONS FOR USING A MOUTH CALL IS BECAUSE IT'S HANDS FREE AND REALLY ALLOWS YOU TO BE STILL AND ELIMINATE YOUR MOVEMENTS WHEN THE TURKEYS ARE IN RANGE. ONCE IN RANGE I RELY ON A 12 GAUGE THOMPSON CENTER PRO HUNTER SHOTGUN. THIS SHOTGUN BECAME MY GO TO ABOUT 5 YEARS AGO AFTER WATCHING WADE PATTERN ONE ON THE RANGE. NOW I CAN'T LEAVE CAMP WITHOUT IT. THE REASON I SHOOT THIS SHOTGUN CONFIGURATION IS IT'S LIGHTWEIGHT SO I CAN CARRY IT ALL DAY AND IT'S DESIGNED TO MAXIMIZE YOUR OPPORTUNITY TO HARVEST A BIRD BY HAVING A TIGHT PATTERN NO MATTER THE DISTANCE.



JEFF REYNOLDS



THOMPSON/CENTER
America's Master Gunmaker



CLARK WENDLANDT

HUNTER JUST HAVE TO FIGURE OUT WHAT IS BEST IN THAT SITUATION. THAT IS THE COOLEST PART OF IT. THEY ALSO HAVE GREAT EYESIGHT SO IT IS VERY CHALLENGING. I JUST CAN'T GET ENOUGH OF IT!

TO ME MY FAVORITE PART ABOUT TURKEY SEASON IS ALL THE GOBBLING AND CALLING. I LOVE HEARING TURKEYS MAKE ALL SORTS OF SOUNDS BUT THE GOBBLE REALLY DOES IT FOR ME. HEARING A LOVESICK TOM RESPOND TO A CALL THAT I'VE MADE IS A RUSH THAT CAN'T BE EXPLAINED.

I ENJOY ACTING LIKE I'M THE HEN AND TRYING TO CONVINCING A TOM THAT HE NEEDS TO COME OVER AND SAY HI! WHEN I CAN CONVINCING ONE TO GET RIGHT UP CLOSE AT FULL STRUT AND HEAR THE SPITTING AND DRUMMING AND SEE THE BIRD AT FULL STRUT I'VE DONE MY JOB AND IT'S BEEN A GREAT HUNT!

FROM THE MOMENT ONE GOBBLES IT'S A CAT AND MOUSE GAME TO SEE WHAT YOU CAN MAKE THAT BIRD DO - WILL HE COME ON A STRING OR WILL HE STOP SHORT. IF HE STOPS WHAT CAN YOU DO TO SEAL THEM THE DEAL AND GET HIM CLOSER. SPRING TURKEY HUNTING FOR ME IS SUCH AN ADDICTION THAT I CAN HEAR THEM GOBBLING WHEN I'M SLEEPING. IT'S JUST A GREAT TIME TO BE OUTDOORS. THEN AS YOU GET THEM CLOSER, AND IT SOUNDS AND FEELS LIKE THE GROUND IS SHAKING EACH TIME THEY GOBBLE.

I HAVE ALWAYS WANTED TO LEARN HOW TO CALL TURKEY. THE PROBLEM IS THAT I AM A PROFESSIONAL BASS FISHERMAN AND SEEM TO ALWAYS BE FISHING THIS TIME OF YEAR. LAST YEAR WAS DIFFERENT THOUGH. I DECIDED I WAS GOING TO LEARN AND THE GREAT THING WAS THAT I GOT TO DO IT A LOT. TURKEY IS PROBABLY THE MOST ADDICTING HUNTING I HAVE EVER DONE. THE ADRENALINE FLOWS AND YOU JUST NEVER KNOW HOW IT IS GOING TO GO DOWN.

THE THING I LIKE THE BEST IS TRYING TO BRING A BIRD TO YOU. THERE ARE SO MANY WAYS TO BRING THEM IN. YOU CAN IMITATE A HEN, A JAKE, OR A MATURE GOBBLER. YOU CAN CALL A LITTLE OR A LOT. YOU AS A



WADE MIDDLETON

CHECK OUT ALL THE GEAR YOU'LL NEED AT THE CABELA'S TURKEY ROOST!

SAWYER®

WE KEEP YOU OUTDOORSSM

SAWYER INSECT REPELLENTS AND THE ZIKA VIRUS

THE SPREAD OF THE ZIKA VIRUS IS EXPLODING IN CENTRAL AND SOUTH AMERICA. THERE ARE NO CURRENT VACCINES OR MEDICATIONS AVAILABLE FOR THE VIRUS, OF WHICH THE INFECTION RATE IS CURRENTLY ESTIMATED AT 1 IN 5. AS MUCH AS 80% OF THE PEOPLE INFECTED BY A SIMPLE MOSQUITO BITE MAY NOT EXHIBIT ANY SYMPTOMS. SYMPTOMS CAN VARY FROM FEVERS AND RASHES TO THE WIDELY PUBLICIZED AND POTENTIALLY FATAL BIRTH DEFECTS. SAWYER'S ENTIRE LINE OF TOPICAL INSECT REPELLENTS AND PERMETHRIN FABRIC INSECT REPELLENT HAVE BEEN TESTED AND ARE EFFECTIVE AGAINST THE MOSQUITO THAT TRANSMITS THIS VIRUS.

THE Aedes Aegypti MOSQUITO SPECIES IS OFTEN REFERRED TO AS THE YELLOW FEVER MOSQUITOES BUT CAN ALSO TRANSMIT THE ZIKA VIRUS, MALARIA, DENGUE FEVER, AND OTHER DISEASES. THIS SPECIES ORIGINATED IN AFRICA BUT HAS SPREAD ACROSS THE WORLD IN TROPICAL AND SUBTROPICAL REGIONS, INCLUDING PARTS OF THE SOUTHERN UNITED STATES. IT IS A VERY RESILIENT SPECIES AND HIGHLY ADAPTED TO THE URBAN ENVIRONMENT, EVEN WHERE WATER IS LESS PREVALENT. FORTUNATELY, WE DO KNOW WHAT IS EFFECTIVE AGAINST THIS DISEASE CARRYING MOSQUITO.



WE HIGHLY ENCOURAGE THE USE OF OUR ODORLESS PERMETHRIN CLOTHING AND FABRIC INSECT REPELLENT AS THE FIRST LAYER OF DEFENSE. SAWYER PERMETHRIN REPELS AND KILLS MOSQUITOS AND TICKS FOR 42 DAYS OR 6 WASHINGS AND DOES NOT HARM ANY FABRICS OR FINISHES. IT CAN BE USED TO TREAT CLOTHING, FOOTWEAR, BEDDING, STROLLERS, TENTS, AND MANY OTHER TYPES OF FABRIC. THE MORE SURFACE AREA YOU HAVE TREATED, THE MORE PROTECTED YOU ARE FROM MOSQUITOES AS THEY HOP AROUND YOU. IT IS COMPLETELY ODORLESS AFTER IT HAS DRIED AND IS SAFE FOR USE AROUND THE ENTIRE FAMILY.



THE SECOND LAYER OF DEFENSE SHOULD BE A COMFORTABLE AND EFFECTIVE TOPICAL INSECT REPELLENT. FOR ROUTINE USE, WE RECOMMEND LOTION BASED INSECT REPELLENTS. IN ADDITION TO LASTING LONGER AND BEING MORE COMFORTABLE TO WEAR, OUR TIME RELEASE DEET LOTIONS AND PICARIDIN LOTION ARE MORE GENTLE ON YOUR SKIN THAN ALCOHOL BASED SPRAY FORMULAS.

SAWYER CONTROLLED RELEASE IS A 20% DEET TIME RELEASE FORMULA THAT LASTS UP TO 11 HOURS AGAINST MOSQUITOES. SAWYER ULTRA 30 PROVIDES A SLIGHTLY HIGHER LEVEL OF PROTECTION FOR UP TO 12 HOURS WITH 30% DEET AND A VERY COMFORTABLE LIPOSOME BASE. SAWYER 20% PICARIDIN LOTION INSECT REPELLENT CAN LAST 14 HOURS BUT WITH ADDED PROTECTION AGAINST FLIES. OUR GEAR SAFE PICARIDIN LOTION AND SPRAY FORMULAS ARE QUICKLY BECOMING THE MORE POPULAR CHOICE WITH OUR CUSTOMERS.

THE ZIKA VIRUS IS A SERIOUS ISSUE THAT IS JUSTIFIABLY CAUSING CONCERN AS IT SWEEPS ACROSS THE GLOBE. THE SCIENTIFIC COMMUNITY HAS NOW EXPEDITED THE SEARCH FOR A CURE BUT ALSO ADMITS THAT THE PROCESS CAN TAKE YEARS. THE ZIKA VIRUS HAS NOW JOINED THE DIALOGUE ALONG WITH MALARIA AND OTHER PREVENTABLE LIFE THREATENING DISEASES. SAWYER IS PLEASED TO OFFER EFFECTIVE PRODUCTS THAT HELP PREVENT THE TRANSMISSION OF THESE DISEASES AND WILL CONTINUE TO EXPAND OUR PRODUCT LINE TO PROTECT OUTDOOR ENTHUSIASTS AND DAILY USERS ALIKE.

CLICK THE LINK BELOW TO LEARN MORE ABOUT SAWYER PRODUCTS



YAMAHA RELIABILITY SPREADS TO THE MIDWEST

WHEN IT COMES TO RELIABILITY, YAMAHA HAS MAINTAINED A HIGH STANDARD AS PART OF THEIR LEADING REPUTATION AS AN OUTBOARD MANUFACTURER.

WHILE AT THE YAMAHA MIDWEST WRITER'S EVENT IN BAY HARBOR, MICHIGAN, WADE MIDDLETON WAS ABLE TO EXPERIENCE FIRSTHAND, WHAT THE LINEUP OF YAMAHA OUTBOARDS HAS TO OFFER.

KNOWN FOR STARTING UP TIME AFTER TIME AND RUNNING THROUGH WHATEVER CONDITIONS YOU CAN THROW AT IT, YAMAHA'S RELIABILITY IS A FEATURE THAT IS UNMATCHED IN THE OUTBOARD INDUSTRY. ALONG WITH RELIABILITY, YAMAHA OFFERS FUEL ECONOMY TO OUTLAST COMPETITORS ON THE WATER.

SUITED FOR EVERYONE WHO MIGHT BE POWERING A SMALL JON BOAT TO THE PUTTING FOUR MOTORS ON AN OFF SHORE BOAT, YAMAHA OUTBOARDS OFFER MOTORS FROM SMALL PORTABLE 2.5 HORSEPOWER MOTORS ALL THE WAY TO 350 HORSEPOWER FOUR STROKE MOTORS. FIND OUT WHY WADE AND THE REST OF THE AMERICANA OUTDOORS CREW CHOOSES YAMAHA IN THE VIDEO BELOW!





STEALTH CAM PRESENTS NEW G34 PRO

Stealth Cam®, introduced in the year 2000, quickly became the leader in scouting camera innovation. Continuing to advance technology to the next level, Stealth Cam® introduces the new G34 Pro.

The G34 Pro is 10% smaller in size than the original G series, and features a textured housing with rub to help blend in with its surroundings. Some of the more notable improvements include an adjustable PIR sensor that allows the camera to sense out to 100 feet, as well as security mode with SD card overwriting. Security mode ensures your card will never fill up and stop working, rather retaining the most recent information the SD card capacity can hold.



The G Pro series feature the same easy to use interface with a digital LCD screen that reads out to you exactly what setting your camera is set to, so there is no guess work involved. Now shipping with preset date and time, you don't have to worry about forgetting to set your date/time, and can eliminate one step of the set up process.

Another important feature the G Pro series retain is our Matrix Advanced Blur Reduction technology. This allows the user to choose from two settings at night. Standard mode is chosen for optimal image quality when placed over an area you know the subject will be stationary (Feeders, small water holes, scrapes, mineral licks, etc). Advanced mode is chosen for the most usable images in areas with lots of movement such as food plots, trails, gate crossings, roads, and so on. By choosing advanced mode you will lose some illumination range at night (Approximately 15%) but you will always be able to tell what your subject is. Most serious hunters would agree that a non blurry image of that big buck is much better than blurry, unidentifiable antlers and body.

G34 Pro Features

- Triad® Armed
- 12 Megapixel
- HD Video recording 5-180 seconds w/ audio
- Time Lapse with PIR Override
- 10% Smaller than G Series
- PIR Adjustable range
- Security Mode (re-write SD memory)
- Reflex™ Trigger-.5 seconds
- 34 IR Low Glow Emitters
- Intuitive backlit menu programing
- Matrix™ Advanced Blur Reduction
- Retina™ Low Light Sensitivity
- 16:9 Wide Image Ratio
- Quick Set pre-programmed option
- Burst Mode 1-9 images per triggering
- 5-59 sec/ 1-59 min recovery time out
- Time/ Date/ Moon Phase/ Temperature/ Name Stamp
- GEO-TAG GPS Tagging
- Manual Shot capability
- Secure lock password protection
- SD Card slot up to 32GB
- Test Mode
- Video & USB output
- Operated on 8 AA batteries
- External power jack for 12V battery box
- Active time setting
- Multi Lingual (English/ French/ German/ Spanish)
- Preset Time & Date (CST)
- MSPR: \$169.99



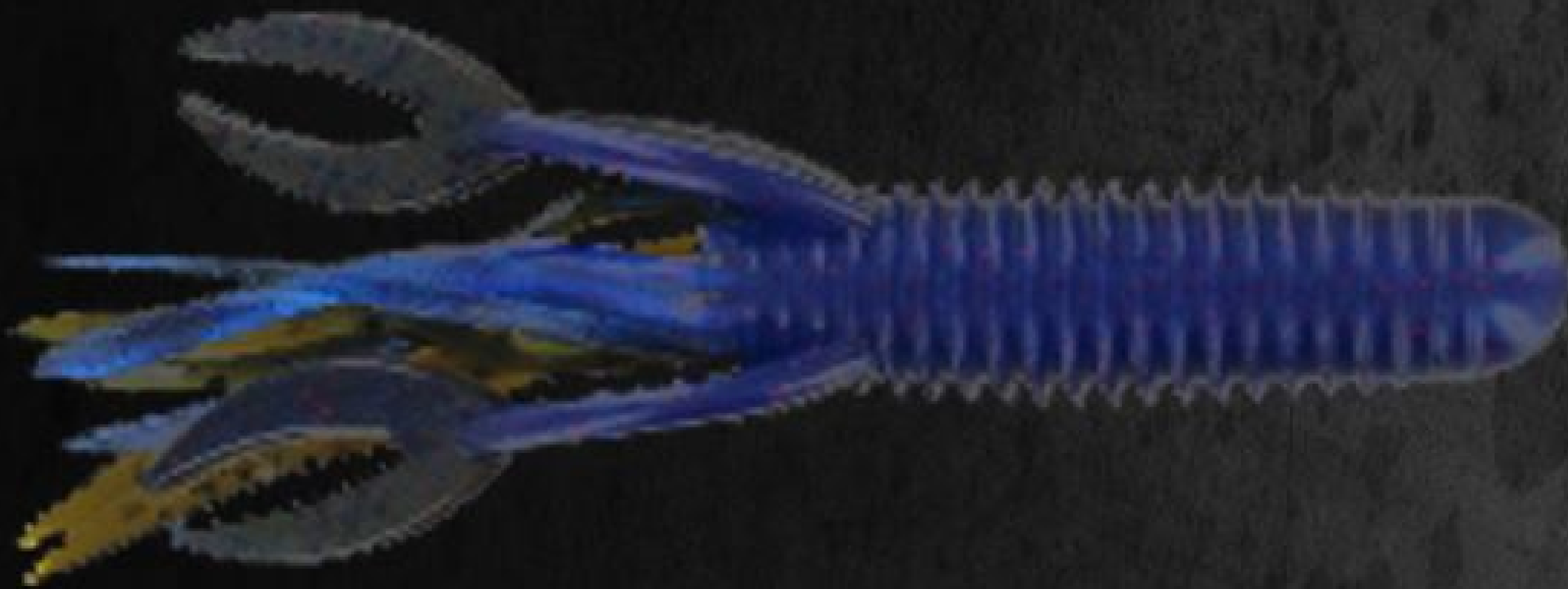
**BIG BITE
BAITS**

Designed to bring the "BIG BITE" to your line!

BACK FOR THE 2016 CABELA'S COLLEGIATE BASS FISHING SERIES

The Association of Collegiate Anglers has announced that Big Bite Baits will continue to support collegiate anglers and the 2016 Cabela's Collegiate Bass Fishing Series. Collegiate anglers have come to know Big Bite Baits as a sponsor through Big Bite Baits' collegiate purchase program and prize support of ACA sanctioned events across the nation such as the BoatUS Collegiate Bass Fishing Championship Presented By Cabela's and many school-run events throughout the year.

Big Bite Baits has produced tournament winning soft plastic lures, designed by an elite group of professional anglers since the creation of the company. From finesse baits, like the WarMouth, to the newest Big Bite Battle Bug, Big Bite Baits has something for every situation. Anglers such as Jeff Kriet, Dean Rojas, Mike McClelland, Michael Neal and Russ Lane have all helped develop products that are "Designed to bring the Big Bite to your line."



According to Wade Middleton, Director of the Association of Collegiate Anglers and President of CarecoTV, "we're pleased to have Big Bite Baits' continued support of collegiate anglers across the nation and their discount program will allow anglers choosing to throw their baits, to purchase them at a significant discount. This program, like many others in college fishing, has allowed us to reward students, not only at our own events, but many of the student-run events we assist as well."

"Big Bite is excited to be a part of the 2016 Cabela's Collegiate Bass Fishing Series again," said Big Bite Baits' Les Bratcher. "It has been exciting to see the growth and enthusiasm this group of anglers has had the past several years. We plan to increase our participation and program benefits to the college anglers in 2016. This is a group of exciting and dynamic anglers that is an important part of the bass fishing industry. I would like to encourage college anglers to contact the Cabela's Collegiate Bass Fishing Series for more details about our 2016 program."

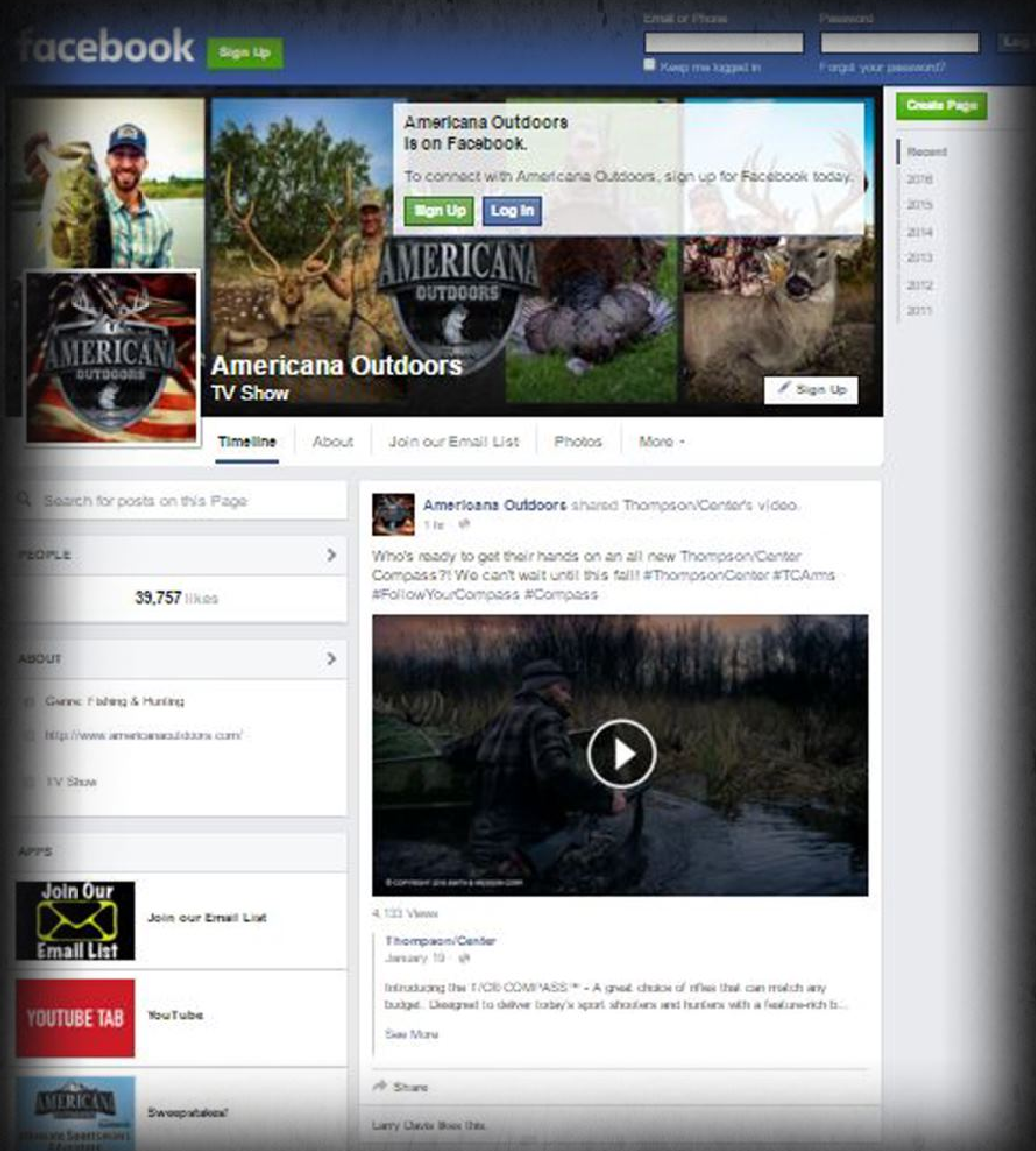
Complete details of the collegiate contingency and bonus programs can be found be at the Discounts and Incentives page or by emailing college@carecotv.com.

More information regarding Big Bite Baits, including a complete line up of their products, can be found at: www.BigBiteBaits.com. You can also find them at: www.facebook.com/BigBiteBaits.



Presented By
GARMIN.

FIND US ON FACEBOOK!



'LIKE' THE AMERICANA OUTDOORS FACEBOOK PAGE FOR MORE OUTDOOR NEWS, TIPS, AND WEEKLY GIVEAWAYS!

Presented By
GARMIN.



Presented By
GARMIN.

THE TOOL SHED

CHECK OUT SOME OF THE GEAR USED
BY THE AMERICANA OUTDOORS STAFF



CABELA'S SLT LONG BOX CALL



**CABELA'S MEN'S MADE IN THE
SHADE™ SEVEN-BUTTON SHIRT
WITH 4MOST UPF™**



**SAWYER PERMETHRIN
PREMIUM INSECT
REPELLENT**



SUNLINE FX2 BRAID



**POWER-POLE
BLADE EDITION 8'**



**GARMIN LAKEVU HD
ULTRA MAPS**

MAINTENANCE MATTERS[®]

A SIMPLE GUIDE FOR THE LONGEVITY OF YOUR OUTBOARD



WHY MAINTENANCE?



LET'S GET STARTED



CORROSION PREVENTION



FUEL & FUEL SYSTEM



ELECTRICAL SYSTEM



POWER TRIM & TILT



PROPELLER SOLUTIONS



EXTERNAL APPEARANCE



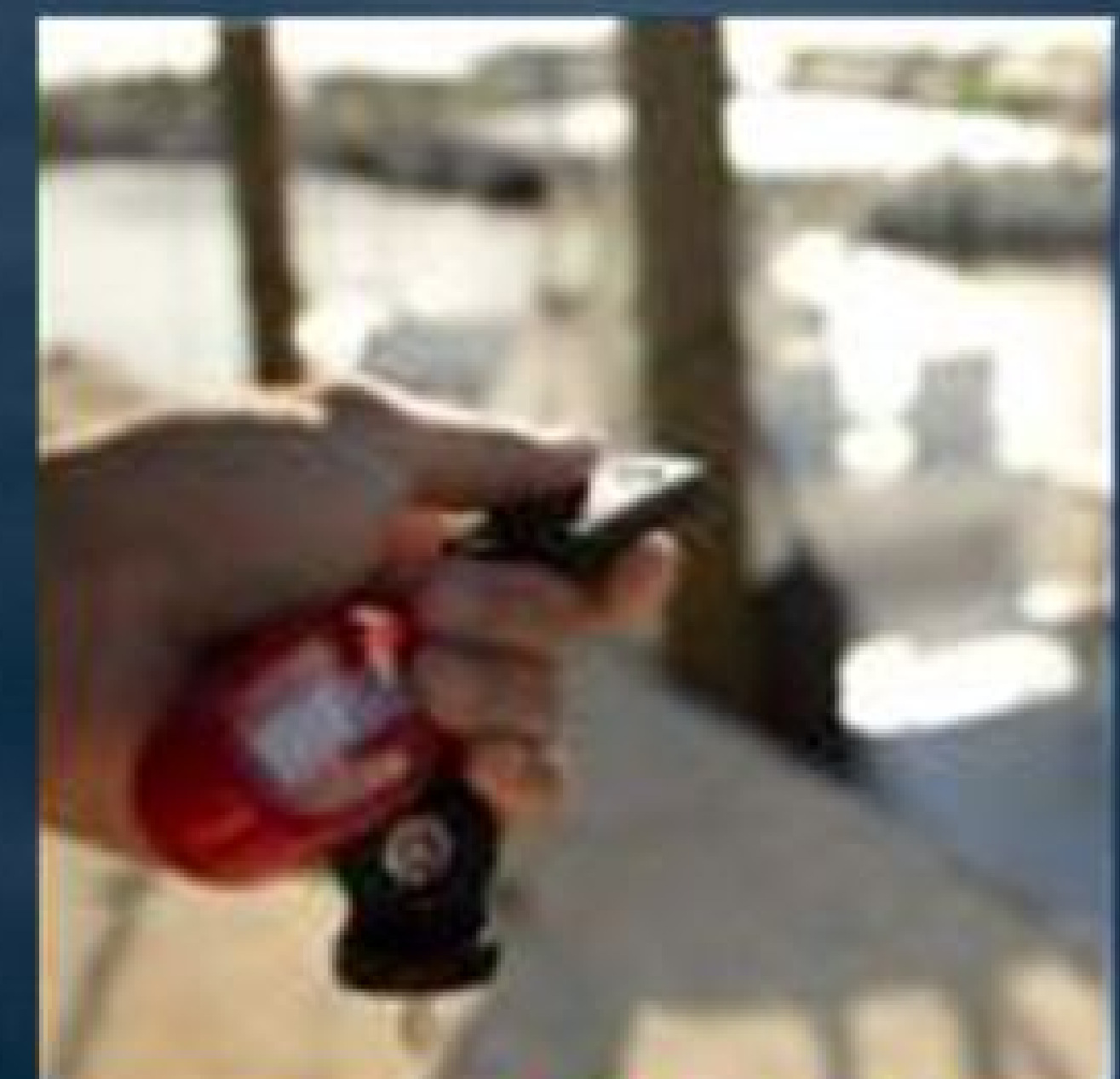
INTERVAL MAINTENANCE



ENGINE OIL & LUBE



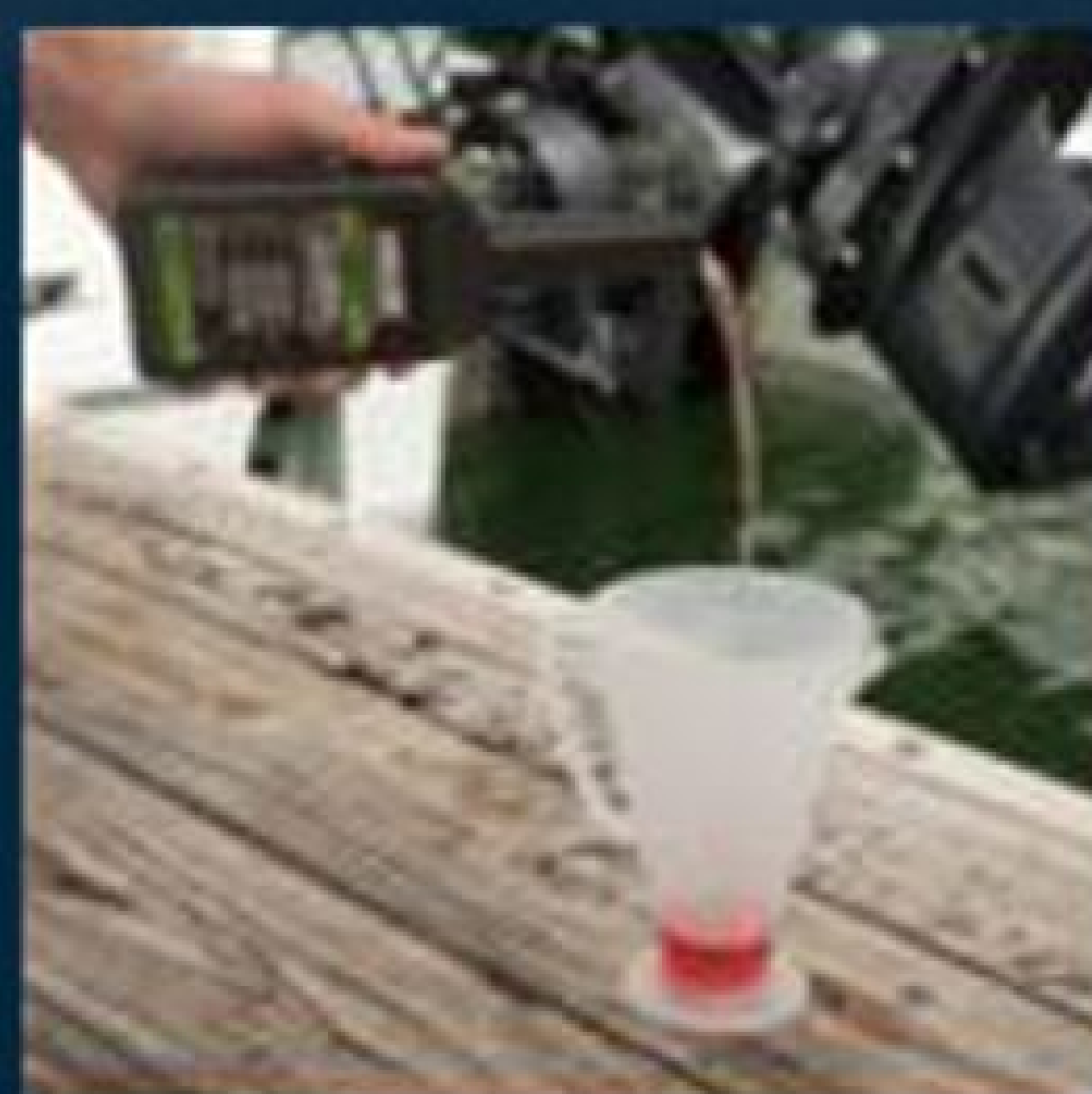
LOWER UNIT



OTHER KEY ITEMS

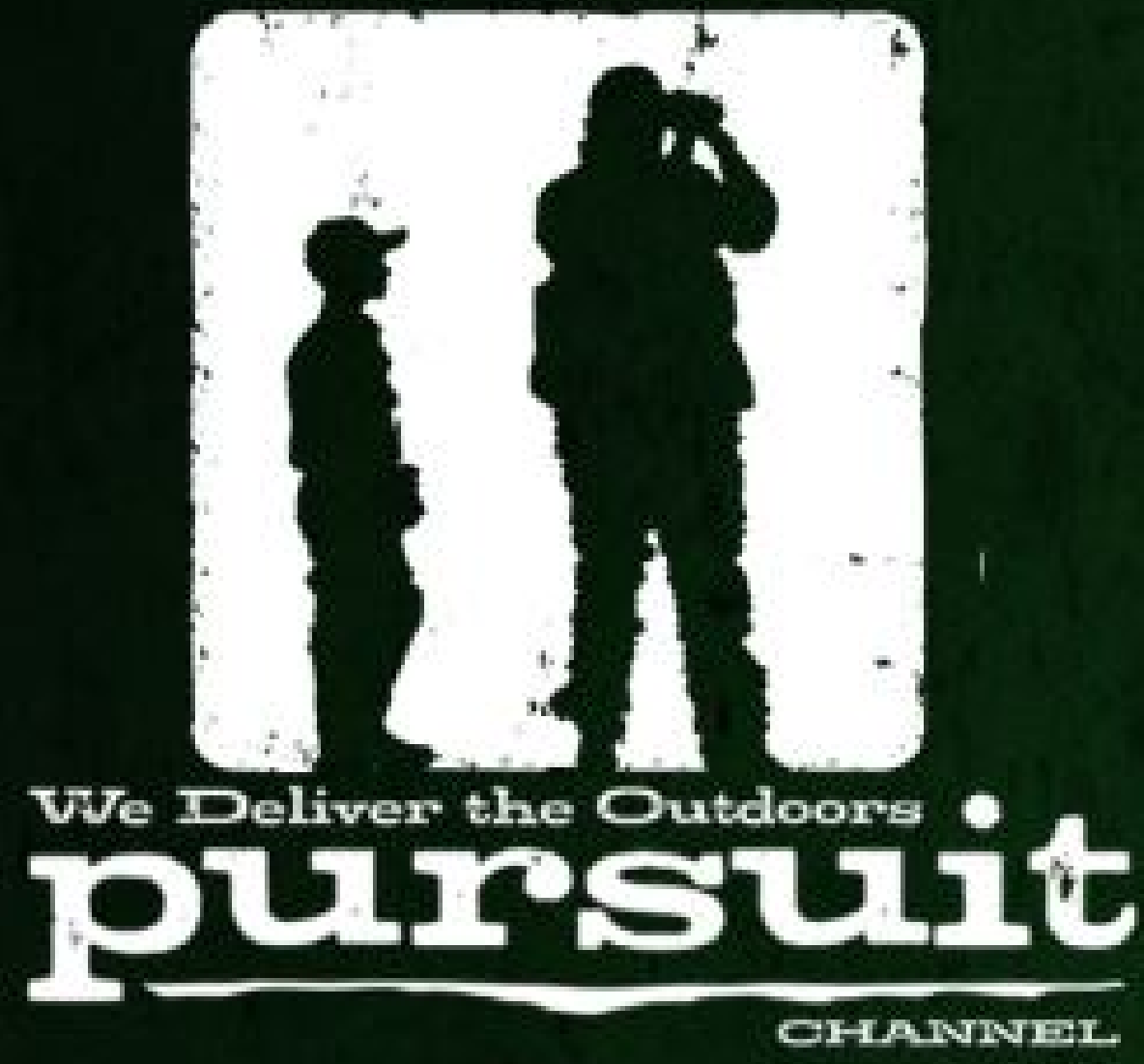


EXTENDED STORAGE



CAPACITIES & SPECS

WATCH AMERICANA OUTDOORS® ON THESE GREAT NETWORKS!



Brought to you by

