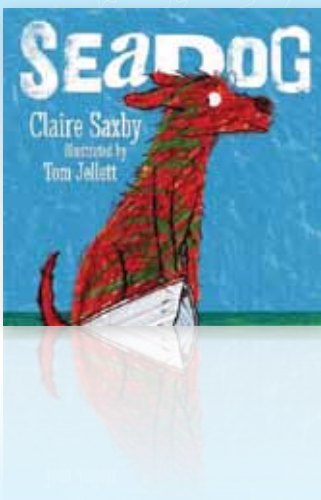


Celebrating 10 years!

2013 BOOK OF THE YEAR AWARDS

and the winners are...





- 3 From our President
- 4 Association News
 - ICP2014 update
 - QLD Registration Board
 - Legacy Funds
 - NDIS news (seeking Project Officer)
 - Board update and nominations
 - Online Member Communities
 - SPyce Report Launch
 - Association Award nominations
 - Easy English fact sheets
 - Practice documents and transferability project
 - SPWeek – Thank you!
 - Book of the Year Awards 2013
- 12 2014 National Conference
- 13 National CPD Update
- 15 Branch AGMs update
- 16 Professional Practice News
 - Risk management for new PPs
- 18 Branch Pages:
 - New South Wales
 - Northern Territory
 - Queensland
 - South Australia
 - Tasmania
 - Victoria
 - Western Australia
- 25 Feature – TRINH Foundation
- 26 SPA online update
- 27 Classifieds

National Office

Level 2 / 11-19 Bank Place
Melbourne VIC 3000

T 03 9642 4899

1300 368 835

F 03 9642 4922

E office@

speechpathologyaustralia.org.au

Chief Executive Officer

Gail Mulcair

T 03 9642 4899

E council@

speechpathologyaustralia.org.au

Speech Pathology Australia Board

Deborah Theodoros

President

Gaenor Dixon

Vice President Communications

Meg Ledger

Vice President Operations

Michelle Foley

Director (Continuing Professional Development and Scientific Affairs)

Felicity Burke

Director (Member Networks)

Robyn Stephen

Director (Practice, Workplace and Government – Communications)

Teena Caithness

Director (Practice, Workplace and Government – Operations)

Stacie Attrill

Director (Professional Standards)

Tennille Burns

Director (Public Affairs)

Advertisements

Start from \$165 (inc GST) for an eighth of a page. Where Speech Pathology Australia has to arrange the artwork, there is an additional charge of \$44 (inc GST).

Publications Officer

Lana Busby

T 03 9642 4899

1300 368 835

E pubs@

speechpathologyaustralia.org.au

Inserts/Flyers

Distributed nationally
\$1595 (inc GST)

Advertising Booking Dates for December 2013 Speak Out

The official booking form must be received at National Office by COB Wednesday 30 October 2013. The artwork material deadline is COB Tuesday 5 November 2013.

See the Association website for further information

www.speechpathologyaustralia.org.au

Disclaimer

To the best of The Speech Pathology Association of Australia Limited's ('the Association') knowledge, this information is valid at the time of publication. The Association makes no warranty or representation in relation to the content or accuracy of the material in this publication. The Association expressly disclaims any and all liability (including liability for negligence) in respect of use of the information provided. The Association recommends you seek independent professional advice prior to making any decision involving matters outlined in this publication.

Print Post Approved

PP349181/01711

ISSN 1446-053X



IT IS WITH GREAT PLEASURE that I write this editorial as the new President of Speech Pathology Australia. I am deeply honoured to have been appointed to this position and hope that over the next couple of years, I can provide the leadership and vision that is worthy of the Association and its members. I would like to take this opportunity to pay tribute to Chris Stone, the immediate past President for her exemplary leadership, tireless commitment, and her strategic direction of SPA across almost four years. I would also like to thank Chris for her assistance in easing me into this role. Chris, you have earned a well-earned rest. Thank you!

The next few years are shaping up to be very exciting indeed for the Association. The Strategic Planning day held in August heralded a renewed vision for the Association based on values and strategic imperatives that reflect the current and future environments in which our members will practice. The Plan was developed through consultation with key stakeholders and members of the profession and drew heavily upon the input from members through the Strategic Planning survey completed prior to this event. The Plan is currently being formalised at National Office and will be distributed to all members in due course.

Speech Pathology Week is now over for another year, and there is little doubt that this was a resounding success as reported in this issue of *Speak Out*. When over 200 activities occurred across the week, and over 1 million people were part of a conversation about communication, it is not hard to conclude that the message about speech pathology was well-delivered. Thank you to all members and to our staff for making this such a successful event this year.

During Speech Pathology Week, we introduced the International Communication Project 2014 (ICP2014), an international collaboration that aims to highlight the importance of communication and the devastating effects of communication disability on people's lives around the world. The ICP2014 will be officially launched in January 2014 along with the Universal Declaration of Communication Rights, and will provide a strong focus for our lobbying and awareness raising throughout 2014 and beyond.

Both Chris Stone and Gail Mulcair, together with Cori Williams and Pam Richards, attended the IALP Congress in Turin, Italy. Principally, SPA was there to present our bid for the 2019 IALP Congress, but additionally to also represent the Association on a panel discussion around the implications of the World Health Organisation (WHO)'s *World Report on Disability*, and participate in meetings with our international counterparts who have been founding partners to ICP2014.

Unfortunately, our bid for the IALP 2019 was unsuccessful with our colleagues in Taiwan being awarded this opportunity. Despite this disappointment, IALP in other respects was very productive. The Association's response to the *World Report on Disability* was highly regarded by delegates. Meetings in relation to ICP2014 culminated in the project being presented to the IALP Board and subsequently endorsed at the IALP General Assembly, thus providing even greater exposure for this important project.

There will be a great deal of activity ahead which I am sure members will find stimulating and engaging. I look forward to working with you all.

Deborah Theodoros
President

ICP2014 and QLD Registration Board update



THE International Association of Logopedics and Phoniatrics Congress was an eventful time for ICP2014 organising countries. It included endorsement of the project by the IALP Board and the launch of the official logo (as premiered during SPWeek) and www.communication2014.com website. Much discussion about how to make the project truly international also took place.

Member organisations are now approaching speech pathology and consumer bodies in countries around the world, as well as promoting the project at conferences and congresses. We need your help! If your professional networks extend outside of Australia, help us get in touch with Asia-Pacific and beyond – contact jwood@speechpathologyaustralia.org.au.



ICP2014 IALP SAC meeting (from left): Jonathan Linklater (President, IASLT), Anne Healy (Secretary, IASLT), Gail Mulcair (CEO, SPA), Joanne Charlebois (CEO, CASLPA), Bryony Simpson (Chair, RCSLT), Derek Munn (Director of Policy, RCSLT), Kamini Gadhok (CEO, RCSLT), Judy Meintzeir (President, CASLPA), Arlene Pietranton (CEO, ASHA), Patty Prelock (President, ASHA), Dean Sutherland (NZSTA), Chris Stone (SPA President, 2010–2013 – taking photo).

Stand up for Communication!

You can still sign up to be a Communication Champion during the ICP2014.

Raise the profile of communication disorders and the difference you make to people's lives.

We'll support you every step of the way, so sign up today.

For more information, contact jwood@speechpathologyaustralia.org.au



Queensland Registration Board Legacy Funds Program

WITH THE dissolution of the Registration Board in Queensland in May this year, it was identified that a substantial amount of funds remained held in trust. The funds accumulated have largely come from registration fees paid to the Registration Board over time, and in the past have been held in reserve for any liabilities that the Board may have incurred, as well as specific purpose grant programs for the benefit of Queensland speech pathologists.

Over the period of transition to dissolve the Registration Board, the Queensland government expressed a strong commitment that those funds should continue to be managed and utilised in the interests of the Queensland speech pathology profession and ultimately for the benefit of consumers of speech pathology services in Queensland.

Queensland Health has subsequently negotiated with

Speech Pathology Australia, as the profession's peak body, to manage the funds and auspice appropriate grant schemes, ensuring that, in good faith, the funds will be utilised for the benefit of all speech pathologists in Queensland (irrespective of SPA membership) and to include speech pathologists working across all sectors of practice. Speech Pathology Australia is currently working with a Queensland based Reference group and Queensland Health to establish the scope and

criteria across a range of grant schemes to be funded by these legacy funds.

Once the program's scope, criteria and eligibility are confirmed and a contract signed with Queensland Health, details of the available schemes for 2014 will be distributed to speech pathologists through SPA publications and through multiple employer and departmental networks.

Gail Mulcair
Chief Executive Officer

National Disability Insurance Scheme (formerly DisabilityCare Australia)

SOME OF YOU will have noticed the name change of DisabilityCare Australia back to the National Disability Insurance Scheme (NDIS). SPA has been closely following the launch of this scheme since 1 July 2013 when it rolled out in Tasmania, South Australia, the Hunter area in NSW and the Barwon area in Victoria. Further stages will roll out throughout the next six years, and the scheme is expected to cover all eligible Australians with a disability by July 2019. You can find more information about the staged rollout on the NDIS website (at publication, website still using DisabilityCare Australia): www.disabilitycareaustralia.gov.au/roll-out-disabilitycare-australia

We are pleased to be building relationships with key operational and policy staff at the National Disability Insurance Agency (NDIA) who administer the scheme, and will continue to foster these to ensure that speech pathologists are well represented as providers under this important scheme.

We are also working with members to understand the impact of NDIS on practice. National Office has produced two resources to support members who want to know more about NDIS and these can be accessed from our website under *Information for Members > Resources > Professional Practice Info Sheets & FAQs > DisabilityCare*.

We are also working with members to keep them informed about new information, and to take queries from members to the NDIA where necessary for clarification. This is mostly accomplished through our vibrant SPA Disability Member Community on Facebook which is free to join for all members. For more information about joining, please see our website under *Member Networks*.

SPA is also organising for NDIA staff to speak to speech pathologists (SPs) in some of the launch sites, so that members have the opportunity

to hear about the scheme and ask questions directly to senior officials. This will begin with a session on the 26 October in South Australia, which members can register for through the *Branch CPD Events* webpage.

Overlap between NDIS and Better Start/Helping Children with Autism programs

We have had confirmation that *Helping Children with Autism* (HCWA) and *Better Start for Children with Disability* early intervention funding programs will be subsumed by NDIS. This means that the HCWA and Better Start schemes will close to new clients in line with NDIS becoming available to the age groups of those clients. Children already being seen under either FaHCSIA scheme will be able to choose which one to continue under for now.

NDIS eligibility is not based on a specific list of diagnoses. Therefore, under NDIS, children with significant functional limitations resulting from an impairment may be eligible for some support, regardless of diagnosis. We have had confirmation that a child with a severe phonological disorder and mild language disorder has been able to access SP support under NDIS. This is really encouraging for clients with communication disorders who were not previously eligible for support through Federal schemes such as *Better Start*.

The NDIS process involves an individual plan, based on the child's needs, and SPs should be aware that this may mean some families access fewer allied health sessions than they would have using the \$12,000 provided by *HCWA* or *Better Start*. On the other hand, families with significant needs may be able to access more than they would have been eligible for previously.

We look forward to keeping you updated with further information about the scheme as it unfolds through *Speak Out*, *National e-News*, the website and our Member Communities.

Dr Jemma Skeat
National Advisor, Research and Policy

Speech Pathology Australia

Project Officer: Disability Applications sought

WITH THE ROLL OUT OF the National Disability Insurance Scheme (NDIS; formerly DisabilityCare Australia) well underway, SPA has identified the need for a Project Officer with significant experience and interest in the field of disability to join the team for a short-term project position. The objectives of the role will include:

- To provide strategic support to National Office (NO) in identifying risks and opportunities arising from the scheme, and where appropriate to be involved in necessary responses/representation to support members in relation to this scheme;
- To provide support for members and to develop key member resources to support the transition to the NDIS; and
- To inform advice and recommendations to be made to the SPA Board from NO on pertinent strategic issues and future directions.

The position is for two to three days per week for an initial fixed term of three months, with possible extension, and we are ideally seeking someone available to work at NO.

A position description is available by contacting **Nicole Pantelleresco** at council@speechpathologyaustralia.org.au, and applications can also be sent to this address, marked as 'Project Officer Disability'.

Applications for this position must be received by **close of business Friday 1 November** and should include the following:

- Curriculum Vitae
- Statement against Key Selection Criteria (provided in the Position Description)
- Contact details for two referees.

For further information or to discuss the position, please contact **Jemma Skeat, National Advisor, Research and Policy** (jskeat@speechpathologyaustralia.org.au) or **Chris Lyons, Senior Advisor, Professional Practice** (clyons@speechpathologyaustralia.org.au) or by phoning **1300 368 835**.

Board update and nominations

August 2013 Board Meeting

THE THIRD BOARD (Council) meeting for 2013 was held on 10 August 2013, with a Strategic Planning Workshop, facilitated by Allen Blewitt, incorporated on the Friday.

- In preparation for the introduction of the **new Constitution** on 1 January 2014, the Board agreed to commence using associated new terminology. Certain changes include the Council being referred to as the **Board**, Councillors referred to as **Directors** and Branch Presidents referred to as **Branch Chairs**.
- As part of the new Board and Branch structure, Branch Chairs provided reports to the Board for discussion on a range of topics, demonstrating the strengthened communication channels and commitment to issues affecting the membership.
- Strategic discussion occurred in relation to two items: CPD Budget models and Disability Care (NDIS).

- Approval was given for the appointment of a project officer to explore the potential impacts of **NDIS** on the profession and extend the support and resources for members in this area.
- Discussion confirmed that a review of the **Book of the Year judging criteria** will commence, with consideration given to illustrations (as a form of communication) and a 0-2 year's category, and to ensure that after 10 years, the program continues to meet our objectives and reflect best practice.
- An **Aged Care Member Community** was approved, adding to the existing range of Member Communities.
- It was determined that an **Aged Care Clinical Guideline** should be added to the suite of Practice Documents, with a project brief to be developed for this work.

- The Board reflected on the well-attended **National Conference**, SEA *change*: Synthesize, Evaluate, Act! 2013 and the qualitative feedback received. This feedback will be considered in the planning process for future conferences.
- **Accreditation**, against CBOS 2011, was approved for a period of five years for the following programs:
 - > University of Queensland, Bachelor of Speech Pathology
 - > University of Queensland, Master of Speech Pathology Studies
 - > University of Newcastle, Bachelor of Speech Pathology

The next Board meeting will be held over 15–16 November and will include the Association's 2014 budget approval.

Gail Mulcair
Chief Executive Officer

Call for nominations to the Board of Directors

AN EXCITING opportunity now exists for eligible members of Speech Pathology Australia to nominate for a position as a Director of the Board. SPA believes in best practice governance and recognises the need for an effective, highly functioning Board to govern and lead the Association. At the 2013 Annual General Meeting, a new constitution was introduced which included changes to the governance structure of the Association with the move to a skills-based Board. A move away from a previous representational board, this new structure means that applicants with the required skills and experience will gain the position of Board Director, representing the interests of all members.

The Board is comprised of a minimum of seven and a maximum of nine Directors. Up to seven Directors are General Directors drawn from the membership, who apply against

a set of key selection criteria (see Nomination Form). Those nominations accepted are submitted to members for election.

The Board of Directors is responsible for its legal and financial affairs and oversees the development and implementation of policy and strategic direction. The Board meets four times a year and it is expected that Directors will attend all meetings. All new Directors are provided with a comprehensive orientation program and administrative support by National Office.

Nominations are now called from interested voting* members for three (3) vacant positions of Director, each for a period of two years.

There is no limit to the number of nominations and an election will be conducted if more nominations are received than the available positions.

Nominations must be made using the official Nomination Form

(obtainable from National Office) and must be signed by the nominee, proposer and seconder. Each nomination must be accompanied by a document (of no more than two pages) meeting the selection criteria and a Statement of Intent (of not more than 100 words).

Nominations must arrive at Speech Pathology Australia National Office, Level 2, 11–19 Bank Place, Melbourne VIC 3000 **by no later than 5pm, 31 January 2014**. Nominations after this date cannot be accepted. Where required, an election will be held via electronic vote in March.

* *Student, Re-Entry, Alumnus and Associate Members are **not** eligible to nominate or vote in the elections.*

Gail Mulcair
Chief Executive Officer

Online communities, SPyce Launch and award nominations

THE NEW ONLINE Member Communities were launched in June and the growth has been phenomenal!

There are now eight SPA Member Communities open to all members. The shiniest new member on the block is *Ageing and Aged Care!*

Member Communities

- Ageing and Aged Care
- APPropriate Apps
- Disability
- Private Practice
- Rural & Remote
- Speech Pathology Australia Network of Students (SPANS)
- Speech Pathologists in Education and Learning (SPEL)

Member Communities booming!

- Speech Pathologists Working with Developing Communities (WWDC)

Communities are your forum to share information and views, collaborate with your peers, extend your professional networks and receive support from your peers.

Discussion threads are already proving to be a valuable way of meeting and interacting with your fellow speech pathologists.

Members are finding this a great way for collaboration and input across a wide ranging number of speech

pathologists with like interests. To date there are around 2000 members within these communities with numbers growing daily! Many members are joining all the groups and it is particularly heartening to see student members (SPANS) connecting with the profession on many levels.

Given the changes happening with the NDIS, the Disability Member Community has already become an invaluable source of up-to-date information and discussion about changes to provision and services across Australia.

It is wonderful to have a platform where NO staff, Board Members and members can all respond to questions and information.

If you have not had a look, it's high time! NO staff are happy to assist and will walk you through the process should you need help.

Please contact me if you'd like any further information and thank you to all members for your enthusiastic support of this initiative.

The Member Communities are easy to join – there is handy information about how to join on the *Member Networks* webpage.

Felicity Burke
Director (Member Communities)

Launch of the Speech Pathology in Youth (Justice) Custodial Education (SPyce) Report

ON TUESDAY 12 August, at the Royal Children's Hospital, SPA launched the *Back on Track* report about services in youth custodial education.

Written by Laura Caire, speech pathologist and SPYce Project Officer, the three-month project involved gathering information and scoping possibilities for a significant speech pathology presence in the curriculum of young offenders in remand or serving custodial sentences, based at the Parkville College, part of the Parkville Youth Justice Precinct.

The launch was hosted by Director Robyn Stephen, and included presentations from Associate Professor Pamela Snow (Monash University), Brendan Murray (Executive Principal, Parkville College) and Laura Caire (Disability and Additional



SPyce Report launch: (from left) Brendan Murray, Robyn Stephen, Ian Lanyon (Director of Secure Services, Parkville Youth Justice Precinct), Laura Caire, Christine Lyons, Gail Mulcair, Pamela Snow and Christina Wilson.

Needs Co-ordinator/ Speech Pathologist, Parkville College). These presentations have been uploaded to the website.

SPA extends its thanks to Laura, the working party, members of the Clinical Reference Group, staff at Parkville College, interested colleagues and NO staff for the conclusion of a highly successful collaborative project and a comprehensive report into the educational needs of young offenders in custody.

An enthusiastic and committed audience of

around 75 people attended the launch. The response to the report has been extremely positive from speech pathologists and other key stakeholders working in juvenile justice and adolescent mental health settings. Since the launch we have distributed over 130 copies of the report, available on the website. The report is freely available to members and interested agencies.

For more information, contact Christina Wilson on **1300 368 835** or cwilson@speechpathologyaustralia.org.au

Nominations for SPA Awards

SPA ACKNOWLEDGES excellence in speech pathology practice and the voluntary work undertaken by members (and others) through nationally recognised awards.

If you know of someone who deserves the honour and recognition of an Association award, applications must be submitted on the official award nomination forms. For more information visit the website or email council@speechpathologyaustralia.org.au

Gaenor Dixon
Vice President Communications

Fact sheet update

Thanks to Scope our fact sheets are now in **Easy English** so everyone can read about communication & swallowing!

You can find the Easy English versions on the website under **Information for the Community > Clients and Other Professionals > Fact sheets.**

Practice Documents now available and Transferability Project

Updated Position Statement and Clinical Guidelines

THE ASSOCIATION prepares Speech Pathology Practice Documents (Clinical Guidelines and Position Statements) that reflect the current opinion in specific areas relevant to speech pathology practice.

A **Clinical Guideline** provides information on clinical and workplace issues relevant to the speech pathology profession in a specific area of practice. It may be used by speech pathologists to monitor that certain standards are being met on an individual and organisational level in relation to specific practice areas.

A **Position Statement** is a short formal response to an issue requiring immediate clarification from the Association. Its primary purpose is to outline the position of the Association on a particular topic to external stakeholders such as consumers, employers, other professional associations, funding bodies and policy makers.

The following practice documents are now available for members:

- **Clinical Guidelines:**
Tracheostomy, and Videofluoroscopic Swallow Study; and
- **Position Statement:**
Neuromuscular Electrical Stimulation (NMES).

SPA would like to acknowledge the expertise and dedication of the project officers and working parties in the development of these valuable resources.

Tracheostomy Management Clinical Guideline

The Tracheostomy Management Clinical Guideline was initially developed in 1996, revised in 2005 and updated again in 2013. The Tracheostomy Management Clinical Guideline is intended to provide information about the speech pathology management of the neonate, child and adult with

a tracheostomy. This guideline is not intended to provide a 'how to' manual, but rather a guideline of tracheostomy-specific information and management principles based on current evidence and consensus. It is recognised that the management of a patient with a tracheostomy should be a multidisciplinary approach; however this clinical guideline specifically focuses on the role of the speech pathologist, with reference to multidisciplinary team members as appropriate.

Videofluoroscopic Swallow Study Clinical Guideline

Following significant changes in the evidence base and terminology in the "modified barium swallow" field, the 'Videofluoroscopic Swallow Study' (VFSS) clinical guideline was developed to provide evidenced based guidelines for the assessment and management of clients with dysphagia using the Videofluoroscopic Swallow Study (VFSS). It is intended for paediatric and adult populations presenting with oral-pharyngeal dysphagia of any cause and presentation. This clinical guideline has been developed to ensure comprehensive evidence based information on VFSS is available as a standard for all speech pathology services and practising clinicians.

Neuromuscular Electrical Stimulation (NMES) Position Statement

The Neuromuscular Electrical Stimulation (NMES) position statement was first published in 2008. Following further evidence and literature, this position statement has been updated and guides speech pathologists considering implementing NMES. This position statement has been informed by current evidence, international position statements, policies and procedures of international organisations, professional community consultation and consensus opinion.

If you have any questions regarding Practice Documents please contact Stacey Baldac (Senior Advisor, Professional Standards) at saps@speechpathologyaustralia.org.au

Stacey Baldac

Senior Advisor, Professional Standards

Accreditation of University Programs Transferability

SPA IS RECOGNISED by the Federal Department of Education, Employment and Workplace Relations as the professional body representing speech pathologists in Australia and as such, grants accreditation to speech pathology degree programs that meet certain requirements.

Accreditation assures the public that the speech pathology degree programs in Australia have the appropriate qualities to produce professional speech pathologist practitioners who are eligible for membership of SPA.

Speech pathology degree programs accredited by SPA permit students who have achieved the entry-level standard specified in the Competency Based Occupational Standards (CBOS) to graduate.

The accreditation process highlights the need to further investigate the transferability of skills. Transferability refers to the clinical and academic skill of generalising learning from one context to another. These contexts include, for example, the CBOS Range of Practice areas, age groups, medical diagnoses and service delivery models. Clinicians regularly need to use their clinical competence with new clients and thus demonstrate transfer of competence. Examples in daily practice include clinical pattern matching and expert diagnostic reasoning.

Transferability of skills across age groups and populations is a difficult and controversial issue which requires careful incorporation into the accreditation process. Subsequently, SPA has commenced a Transferability Project and appointed Dr Chris Brebner as the project lead. The purpose of the project will be to provide evidence based recommendations in the consideration of how to incorporate transferability of skills into the accreditation process. As part of the project Dr Chris Brebner will be hosting forums and surveys to collect information from SPA members.

If you have any questions regarding this project please contact Stacey Baldac (Senior Advisor, Professional Standards) at saps@speechpathologyaustralia.org.au

Stacey Baldac

Senior Advisor, Professional Standards



What a week!

THANK YOU to everyone who started a conversation – large or small – during SPWeek. It was a hugely successful week and was only possible due to your time, passion and voices.

We received many photos of SPWeek activities held across Australia, we hope you enjoy the selection of these here and the SPWeek wrap-ups in the Branch pages of this issue of *Speak Out*.

We also hope you enjoyed the International Communication Project 2014 (ICP2014) email updates and have a good idea of how next year will look. Thank you to everyone who sent in slogans (the concept will be ready soon!), signed up to be Communication Champions and added their contact to our stakeholder list.



Communication Champions



Do you care about communication?

You can still sign up to be an ICP2014 Communication Champion!

Email jwood@speechpathologyaustralia.org.au for more information.

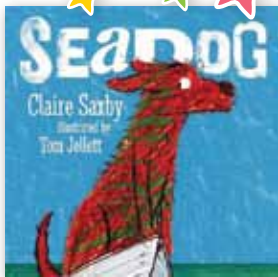
Joanna Wood
Communications & Marketing Manager

Tennille Burns
National PA Coordinator



2013 winners and Awards Ceremony

THIS YEAR'S winners will be officially announced at a ceremony in Melbourne on Tuesday 15 October – but to help get you in the 'Book of the Year mood' we're very proud to announce them to you first here!



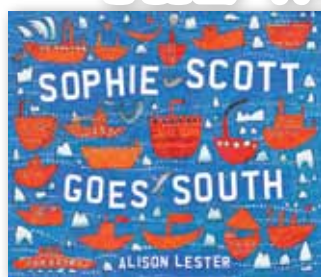
★ YOUNG CHILDREN

SEADOG

By Claire Saxby
Illustrated by Tom Jellett

*Our dog is not a clean dog,
a shiny or a fluffy dog.
Our dog is a SEADOG.*

With great age-appropriate language and fantastic descriptive vocabulary, *Seadog* uses word play, phrase repetition and rhythm to engage the reader. It facilitates early word learning through descriptive language and draws the reader in with a sense of wonder and connection to the story. *Seadog* also promotes prediction and problem solving and facilitates discussion with the story's easily identifiable characters and situations. The beautiful illustrations also add to *Seadog's* appeal – a great book.



★ LOWER PRIMARY

SOPHIE SCOTT GOES SOUTH

By Alison Lester

Sophie Scott is only nine years old, but she's going to Antarctica on an icebreaker with her dad, the ship's captain. During the voyage to Mawson Station and back, Sophie keeps a diary. She sees icebergs, penguins, seals and whales. She makes new friends, wonders at the southern lights and even becomes stranded in a blizzard!

Sophie Scott Goes South has universal appeal, is an excellent narrative and allows for further topic-related research and language extension opportunities. The well-written narrative is supported by beautiful photos and readers are introduced to a variety of new language concepts, descriptive language and vocabulary in a fun and engaging way. Alison Lester uses a variety of literary strategies to immerse the reader into life on the *Aurora Australis*. This book will be loved and enjoyed by children and adults alike.



★ UPPER PRIMARY

AFTER

By Morris Gleitzman

*After the Nazis took my parents I was scared
After they killed my best friend I was angry
After they ruined my thirteenth birthday I was determined
To get to the forest
To join forces with Gabriel and Yuli
To be a family
To defeat the Nazis after all.*

A remarkable book about a challenging period in history. *After* explores issues of identity, loss, grief, friendship, choices and problem solving. The narrative is engaging and the characters speak in easily recognisable age-appropriate language, making sure the reader champions the protagonist from the first chapter. *After* will lead to discussion during reading, as well as long after the book has finished.



★ INDIGENOUS CHILDREN

TWO MATES

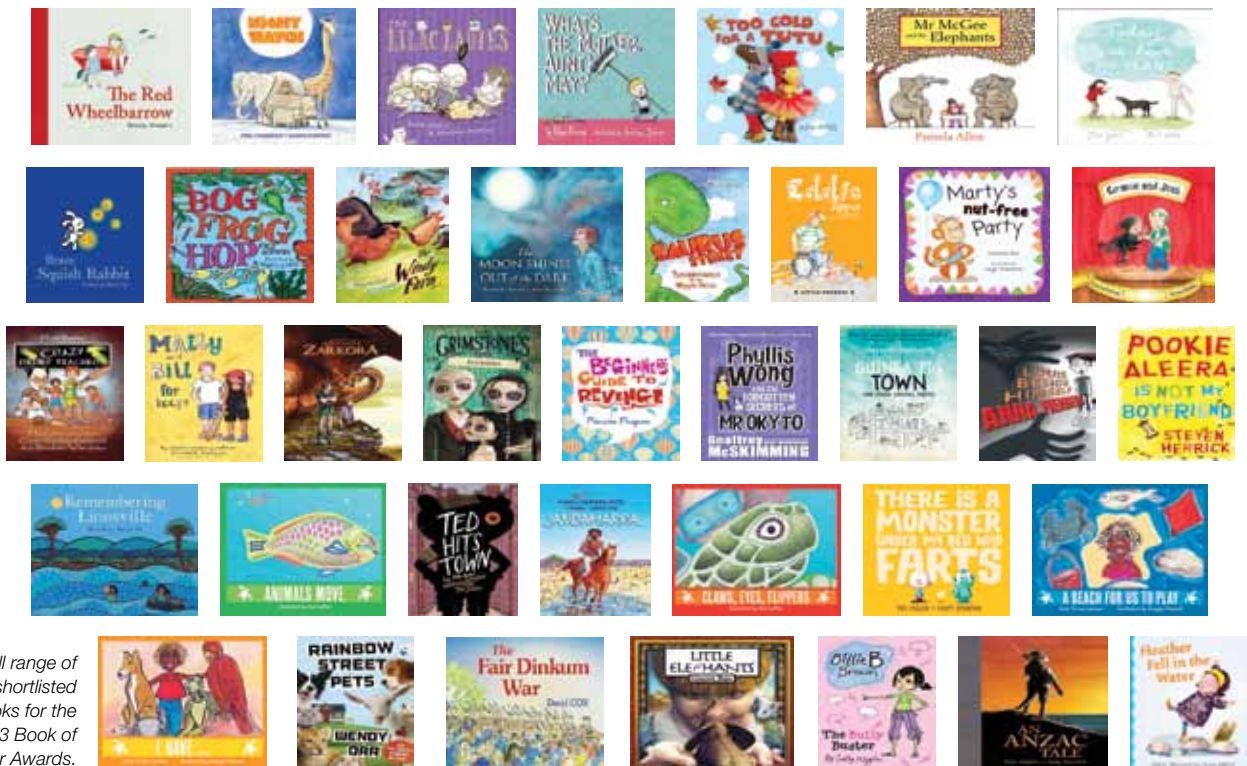
By Melanie Prewett
Illustrated by Maggie Prewett

The true story of two young boys and their special mateship growing up in Broome in Australia's far north. Jack and Raf fish for salmon, hunt for barni, and dress up as superheroes as they explore their coastal home and prove that friendship has no boundaries.

Two Mates tells a great tale with characters that are easily recognisable to young readers. It uses appropriate and accessible language for young indigenous readers and explores the importance of sharing social opportunities, connectedness and friendship. There are great opportunities for topic development and discussion, as well as a strong sense of fun and connection to the land woven through the story.

Proudly working together:





The full range of the shortlisted books for the 2013 Book of the Year Awards.

Ursula Dubosarsky will also be presented with our 'Hall of Fame' award, presented to authors who have contributed significantly to children's literature.

We'd love you to help us celebrate this year's winners, either by coming along to the ceremony or recommending the winning titles to parents and educators as great tools that help develop children's oral language and speech and/or sound awareness.

The awards and this year's winners are also a great way to highlight speech pathologists' integral work facilitating children's literacy. You may like to run an activity, such as:

- a display in your workplace
- a listing on a book reviewing website
- a story time activity at your local library
- creative activities like inviting your clients to dress up as their favourite book character or to act out a scene from their favourite book

- Chat with your branch Public Affairs leader about running a Branch event and pool your resources



- A Book of the Year Awards Poster and Bookmark will be available to complement your activity – email Joanna at marketing@speechpathologyaustralia.org.au for more information.

We're serious about you coming along to the ceremony. If you can make it, please email support@speechpathologyaustralia.org.au for more information.

Media opportunities

We will be running a national media campaign to highlight the important role speech pathologists play in children's language and literacy development. A template media release for members who would like to assist us raise awareness of children's speech and language development in their local area, and to promote their event, is available on the *Book of the Year* section of the website.

It's been another great year for the Book of the Year Awards and thank you for your support in continuing to promote the role of speech pathologists in literacy.

Tennille Burns
National PA Coordinator

Joanna Wood
Communications & Marketing Manager

2014 National Conference News

18–21 May 2014

Crown Conference Centre, Melbourne, Australia



connections: client.clinician.context

THE 2014 Conference Planning Committee (CPC) is pleased to announce their second keynote speaker:



Dr Susan Langmore, Ph.D., CCC-SLP, BRS-S

Susan is Professor of Otolaryngology at Boston University Medical Center and Speech Language and Hearing Sciences at Boston University, where she teaches dysphagia, motor speech disorders, and mentors masters and doctoral students. She is

Director of Speech Language Pathology Services at Boston Medical Center where she also maintains an active clinic caseload.

Dr Langmore is most widely known for developing the FEES procedure to evaluate dysphagia. She lectures throughout the US and internationally. Susan has maintained an active research program for several years. She is a fellow of ASHA and was given the Honours of the Association in 2012.

To view Dr Langmore's abstracts for her presentations, please visit the *Conference* webpage.

Call for Papers

The closing date has passed and the reviewers are busy grading each abstract. The CPC would like to thank everyone who submitted an abstract and every effort will be made to include as many as possible into the Conference program.

Welcome Reception: Eureka 89 Skydeck



The 2014 National Conference Welcome Reception on Sunday night will be held at Eureka 89. One of the features of the evening will be the opportunity for **four** lucky delegates to go out onto the 'Observation Deck', an experience not for the fainthearted.



In each issue of *Event e-News* leading up to the

Conference, we will include a question and 100 lucky members who answer it correctly will go into the draw to win this prize.

The four names will be drawn on the Sunday evening at Pre-registration in the exhibition area. Good luck!



Sponsorship & Exhibition

The Sponsorship & Exhibition Invitation is now available and members are asked to advise the National Conference Manager of details of organisations they consider would benefit themselves and members from participating. Please visit the *2014 National Conference* webpage for full details.

The CPC is pleased to announce the following companies have already taken stands at the Conference: Flavour Creations, Multimedia Speech Pathology, Nestlé Health Science, Olympus, Pearson Clinical Assessment, Pelican Talk & Love and Reilly, Pro-Ed Australia, Safe Swallowing, Trisco Foods – T/A Precise Thick-N, Teleflex Medical Australia, Wise Words Australia and Zyteq. Precise Thick-N is sponsoring the Conference Lanyards and Olympus is sponsoring the online Program and Registration Brochure.



Accommodation

SPA has appointed PR Conference Consultants to manage the accommodation requirements for the 2014 Conference delegates. Details regarding the accommodation options are available from the *Conference* webpage.

Due to the various airlines, discounted fares and private company arrangements, Speech Pathology Australia has decided to allow Conference delegates to make their own travel arrangements and pre/post Conference tours.

Diane Jacobs
2014 Conference Convenor

Pamela Richards
National Conference Manager

National CPD update

National Office has a 1300 368 835 number to support members within Australia to have equity in phoning National Office for the cost of a local call.

When phoning about CPD, please have your SPA member number ready to help us assist you as efficiently as possible.

The 2013 National Tour by Dr Elise Baker

DR ELISE BAKER has now presented her 2013 National Tour workshop – ‘Best practice in the management of speech



sound disorders in children: Making every session count’ – in Launceston,

Canberra, Adelaide and Perth. Feedback has been superb and includes:

- **Launceston 4/5 April 2013** – Found the workshop very practical. Great overview and information about various treatment practices. Excellent summary of research and provision of internet

resources. Thank you Elise.

- **Canberra on 15/16 July 2013** – Excellent presentation – relevant and practical. Love that Elise has such a thorough understanding of EBP and research. Would recommend to colleagues.
- **Adelaide on 29/30 July 2013** – Wow! What a fantastic 2 days! Great topic selection and speaker SPA!! Elise is a fabulous speaker with so much knowledge yet is able to target it at a level that is understandable by all. I have learnt so much that is going to make a

big impact and clinical change in my practice and interventions with many of my clients. Thanks for doing so much on intervention and not leaving it all until the last minute!

- **Perth on 1/2 August 2013** – This is the best PD I have been to! Fantastic presenting – extremely practical and applicable. Workshop had a great mix of research, therapy and practice. Very knowledgeable speaker and well paced. Elise is really tuned into using adult learning styles to teach information and aid retention.

- **Darwin on 5/6 September 2013** – Ab FAB! So relevant! Elise was very generous with expertise & resources and very tolerant of all our questions. The TO-DO lists are a great idea. Confirmed much knowledge but challenged a few beliefs/assumptions. THANKS.

Registrations are **SOLD OUT** for upcoming National Tour workshops including:

- **Brisbane** on Friday 8 and Saturday 9 November 2013
- **Melbourne** on Thursday 21 and Friday 22 November 2013
- **Sydney** on Monday 25 and Tuesday 26 November 2013

2014 National Tour speaker... Dr Julia Starling

“Supporting upper primary school-aged children and adolescents with language and literacy difficulty: Time for some creative thinking!”

SPEECH PATHOLOGY AUSTRALIA is honoured to announce that Dr Julia Starling has accepted the Association’s invitation to be the 2014 National Tour speaker.

Dr Julia Starling will be presenting a two-day workshop on the nature and impact of, and interventions for, upper primary school-aged children and adolescents with language and literacy difficulties. The content will include both school-based and clinical management approaches.



The content of the highly interactive workshops will be based on Julia’s extensive clinical and research focus in this area, an interest that has led to many national and international presentations and publications in recent years. For example, she was an invited author for a clinical forum on language and communication disorders in adolescents in the

October 2012 issue of *Language, Speech, and Hearing Services in Schools*. Julia maintains her private caseload of mainly upper primary and secondary students, is implementing an evidence-based teacher training program in a group of secondary schools in Sydney, regularly lectures and presents seminars and workshops, and continues an active involvement in research projects. Additionally Julia is president of the Learning Difficulties Coalition of NSW.

National CPD update

Get to know your CPD portfolio...

THE SPA CPD PORTFOLIO is supported by CPD Coordinators in NSW, Qld, SA, Victoria and WA. These Coordinators are members employed by the Association to assist the Branch CPD committees and program, and the national CPD program and projects. Branch CPD committees in the ACT, NT and Tasmania are supported in the running of their events by the Senior Advisor, Professional Education & Certification. The CPD Coordinators recently convened at National Office for a very valuable and productive meeting with Michelle Foley, Councillor for CPD and Scientific Affairs.

From left to right in the photo are:

**Erin Masson,
Western Australian CPD Coordinator**

I have been the WA CPD Coordinator since late 2009 working with the fabulous and diverse group that is the WA CPD Committee! My other job is working for the WA Education Department and in my spare time I attempt to keep up with three kids aged four and under!

**Shirani Gomes,
New South Wales CPD Coordinator**

I have been working closely with the dedicated NSW CPD committee as the NSW CPD Coordinator since late 2003. Over the past decade I have also been running my private practice in Belfield and working on the Hornsby specialist support team at Ageing Disability and Home Care (ADHC). My other job is chasing after my one-year-old daughter!

**Catherine Quin,
South Australian CPD Coordinator**

I have been working as the SA CPD Coordinator for three years. It is really fantastic to work with an impressive range of presenters from across Australia and to be part of a supportive, enthusiastic local and national CPD team. I also work as a speech pathologist at the Child and Adolescent Mental Health Service.



**Sharon Crane,
Senior Advisor, Professional
Education & Certification**

I have worked at Speech Pathology Australia for over 15 years, being the first speech pathologist to work out of National Office, initially for one day a week. Over the years, my role has grown to my current full-time position as Senior Advisor, Professional Education & Certification with responsibility for coordinating the Continuing Professional Development and Professional Self Regulation programs. I continue to enjoy working with and for members, and liaising with the CPD committees nationally.

**Tricia Chardon,
Queensland CPD Coordinator**

I have been the Qld CPD Coordinator for approaching 25 years. I have seen many changes in the delivery of a diverse, accessible and quality program of CPD to our members. One of the most significant is the national focus of the CPD Portfolio, although our Branch Calendar of Events is derived from Qld member feedback. I value my close working relationship with my fellow Coordinators; above all I value the Qld CPD Committee... the "think tank" of CPD in Qld!

**Michelle Foley,
National CPD/SA Coordinator/
Board Member**

I graduated from Curtin University and have worked in Queensland and the Northern Territory since then across

Education Qld, the Northern Territory Department of Health and private practice. I am currently the Councillor/Director for the NT and oversee Continuing Professional Development and Scientific Affairs for SPA. I believe this is an excellent time to be involved in the Association as there are many exciting initiatives ahead of us.

Earlybird Registrations are available up to one month before the event date.

Please note – for 2013 events, an additional \$55 fee will apply to registrations after the Earlybird closing date. Book before the Earlybird closing date to save money, assist CPD committees in planning, and avoid the disappointment of finding the workshop has sold out.

2013 CPD program...

The CPD program for 2013 is well underway – to view events open for online registration, watch out for the monthly *Events e-News* or check out the SPA website under *Upcoming Events*, or if you would like to see what events are open and upcoming, visit the *CPD Branch Events* webpage for up-to-date information on CPD Events planned for each state and territory, including ready access to brochures for events that are open for registration. Go to *News and Events > CPD Events > CPD Branch Events*.

NEW SOUTH WALES

**SOLD OUT Monday 25 and
Tuesday 26 November 2013**

Sydney two-day workshop
"Best practice in the management of
speech sound disorders in children: Making
every session count" by **Dr Elise Baker**

Friday 6 December 2013

Sydney one-day workshop
"Autism Update: A Clinically Focussed
Research Review" by **Dr David Trembath**

QUEENSLAND

Sunday 13 October 2013

Brisbane one-day workshop
"Expository Discourse in children and
adolescents: Assessment and Intervention"
by **Dr Marleen Westerveld**

Monday 14 October 2013

Brisbane one-day workshop
"Supporting language development for
people with complex communication needs
who need to use AAC" by **Gayle Porter**

Thursday 24 October 2013

Brisbane Sunset Seminar (5–8pm)
"Practical Management of Dysphagia
and Associated Issues in Progressive
Neurological Disorders" (Session 1 of 2)
by **Cate Barrett**

**SOLD OUT *Friday 8 and
Saturday 9 November 2013**

Brisbane two-day National Tour workshop
"Best practice in the management of
speech sound disorders in children: Making
every session count" by **Dr Elise Baker**

* Watch out for a repeat of the 2013 National
Tour workshop in Cairns on Thursday 20
and Friday 21 March 2014 – registrations
opening November 2013

Thursday 21 November 2013

Brisbane Sunset seminar (5–8pm)
"Practical Management of Communication
Disorders and Related Issues in
Progressive Neurological Disorders"
(Session 2 of 2) by **Cate Barrett**

SOUTH AUSTRALIA

Monday 21 October 2013

Adelaide one-day workshop
"Day ONE of New Developments in
Dysphagia Diagnosis and Management"
by **Dr Maggie-Lee Huckabee**

Tuesday 22 October 2013

Adelaide one-day workshop
"Day TWO of New Developments in
Dysphagia Diagnosis and Management"
by **Dr Maggie-Lee Huckabee**

Monday 4 November 2013

Adelaide one-day workshop
"Paediatric Feeding and Swallowing"
by **Kelly Weir**

VICTORIA

**SOLD OUT Thursday 21 and
Friday 22 November 2013**

Melbourne two-day National Tour workshop
"Best practice in the management of
speech sound disorders in children: Making
every session count" by **Dr Elise Baker**

Monday 25 November 2013

Melbourne one-day workshop
"Aphasia Intervention: Client centred
therapy – from vocabulary to social
participation" by **Dr Bronwyn Davidson**

WESTERN AUSTRALIA

Thursday 24 October 2013

Perth one-day workshop
DAY ONE ONLY of "New Developments
in Dysphagia Diagnosis and Management:
Implications for Intervention" (Thursday only)
by **Dr Maggie-Lee Huckabee**

Thursday 24 and Friday 25 October 2013

Perth two-day workshop
BOTH DAYS of "New Developments in
Dysphagia Diagnosis and Management:
Implications for Intervention" (Both Day
1 & 2) by **Dr Maggie-Lee Huckabee**

Wednesday 13 November 2013

Perth one-day workshop
"Receptive Language Impairment in
Young Children" by **Mellanie Sherwood**

Tuesday 19 November 2013

Perth VC/SCOPIA event
"Theory to Practice: Working alongside
Aboriginal Communities" by **Ann Jacobs**

Wednesday 27 November 2013

Perth one-day workshop
"Dementia Update: From Timely
Diagnosis to Proactive Interventions"
by **Jade Cartwright & Rachel Zombor**

Sharon Crane
Senior Advisor, Professional Education
& Certification (CPD & PSR)

Branch AGM meetings

SPA is currently planning the
2013 Branch AGM meetings,
please find early details below.
All Branch AGM details will
be circulated via email once
confirmed. If you need to update
your email details, please contact
National Office on **1300 368 835**.

ACT

Late November 2013,
date and venue TBC

NSW

3 December 2013,
venue TBC

NT

26 November 2013,
venue TBC

QLD

3 December 2013,
venue TBC

SA

2 December 2013,
venue TBC

TAS

13 November 2013,
venue TBC

VIC

27 November 2013,
venue TBC

WA

3 December 2013,
Oxford Hotel Leederville

Risk management for new PPs

Setting up a private practice as a newly graduated practitioner – how to limit your risk!

HERE'S A GROWING TREND for new or recently graduated speech pathologists to move into private practice. Factors influencing this trend include a shrinking job market in the public sector, an awareness of the demand for private speech pathology services and an entrepreneurial confidence amongst recently graduated speech pathologists (SPs).

It is difficult to benchmark when SPs can safely move into sole private practice as there are always exceptions to the rule, however:

SPA encourages members to gain at least 3–5 years of clinical experience before setting up in private practice as a sole practitioner or employer of SPs.

This recommendation comes from concerns that newly graduated speech pathologists moving straight into private

practice or those with limited experience expose themselves to a far greater risk of having a claim or complaint made against them. This concern has been confirmed over the last 12 months with an increase in the number of issues and complaints raised with us about recently graduated private practitioners (PPs). Even though the risks are similar to the risks all newly graduated SPs may be exposed to, as a business owner the “buck stops with you” and you cannot rely on an organisation or your employer for support.

Newly graduated sole PPs or employers put their professional reputation at greatest risk which in turn may affect their future livelihood. Social media and other platforms make it easy for clients to express their dissatisfaction with an individual or service to a large audience and negative comments stay

“live” for a long time. It has never been more important for SPs to protect their professional reputation at all costs and the reputation of the profession too. Your sound reputation is your livelihood.

Equally as important as our professional reputation is our duty of care to our clients. Ethically we are bound to practice to our highest standards of professional competence. Sadly we are seeing instances where this duty of care is not upheld and SPs are not recognising the limits of their professional competence and business experience, leading to complaints by clients.

Before you consider setting up a speech pathology business we urge you to consider some of the common issues and their outcomes, as well as some suggestions as to how you can minimise your risk.

Issue	Outcome	How to minimise your risk
Lack of business experience	You struggle to keep up with all the paperwork and legal obligations involved in running a business.	<ul style="list-style-type: none"> • Seek financial and legal advice before setting up a business. • Take out necessary insurance including professional indemnity insurance. • Develop a business plan. • Join a small business network. • Attend business training. • Employ a business coach. • Access to a solicitor. • Employ a bookkeeper.
Lack of clinical experience	It takes longer to achieve results or you fail to achieve results leading to client satisfaction.	<ul style="list-style-type: none"> • Gain 3–5 years' experience before setting up a PP. • Employ a clinical supervisor. • Attend PD. • Read articles. • Develop an EBP³ therapy plan for each client.
It's difficult to determine who is a complex client over the phone and when you start to see the client you realise that you don't have the skills to work with the client.	You continue to see a client even though you know that you don't have the necessary skills.	<ul style="list-style-type: none"> • Establish communication protocols and review processes so that clients are aware that at times it is necessary to refer on or seek a second opinion. • Seek supervision for cases that are complex.

Issue	Outcome	How to minimise your risk
Your financial resources may be limited, particularly in the early years of your business.	You don't purchase all the necessary tools/resources. You don't attend PD.	<ul style="list-style-type: none"> Factor these costs in when you set up your business and ensure that you have the minimum set of tools (especially Ax tools). Include a PD and resource budget in your ongoing budget.
You need to spend more time preparing and planning.	You don't spend enough time on non-contact activities because there is a pressure to see clients to make your business profitable.	<ul style="list-style-type: none"> Schedule preparation and planning time into your diary.
The assessment process and report writing takes longer to complete.	Your assessment/report is incomplete. You don't allocate an adequate amount of time for the assessment/report writing.	<ul style="list-style-type: none"> Develop standard assessment and report writing protocols. Provide information in writing to clients about this protocol. Use an assessment procedure and report template. Make it clear to clients about costs and timeframes for reports.
You are isolated if working as a sole practitioner.	You lack day-to-day support from colleagues both clinically and professionally.	<ul style="list-style-type: none"> Join the PP Member Community. Join local PP network or establish your own. Employ a clinical supervisor. Establish multi-disciplinary networks.

Taking on a private practice isn't as straightforward as it may first seem so please think twice before printing some business cards, gathering a few resources and setting up shop! Advice and support is available to small business owners and SPs alike including the governments' small business

website www.business.gov.au, the small business legal help guide www.innovation.gov.au, Guild for insurance and legal advice (1800 810 213) and VHIA for employment, industrial and HR issues (1800 729 329).

And one final word of advice... we often find that issues that come to us

could have been resolved if the SP had sought assistance early. So don't be afraid to seek advice before the problem escalates.

Christina Wilson
Senior Advisor Professional Issues

Christine Lyons
Senior Advisor Professional Practice

Professional Practice news

Changes to the National Australian Defence Force Academy Family Health program

It will be of particular interest to private practitioners who see families of serving defence force members to learn about changes to the ADF Family Health program. As of January 2014, these families will be eligible for \$400/financial year to use towards allied health service – this will include speech pathology services. The funding can be used in addition to private health benefits. Please see www.defence.gov.au for more details.

GP Education Kit

Following the call to arms in the June edition of *Speak Out* ('Always wanted to engage with GPs? Medicare Locals provide a wealth of opportunities to do just that...'), there has been a great response from members volunteering their time to run GP Education sessions for their Medicare Local. To make the process easier we have added the GP Education Kit to the website. Keep up the great work and if you have a good news story about your GP education session make sure you let us know as we would love to share it with others in an upcoming issue of *Speak Out*.

Starting the conversation in NSW



Perfect day for a SPWeek launch!

Fiona Eastley, Candice Brady and Amali at the SP Week launch.

THE NSW Branch launched SPWeek with a day in the park on Sunday 25 August.

A small number of speech pathologists and speech pathology students set up camp near the playground at Grant Reserve in Coogee.

Armed with helium balloons and stickers, we started the conversation with many families in the playground. Interestingly, most of the families had past (and some present) experience of speech therapy. They all sang the praises of the profession and the positive impact it had on their child's life and that of the family.

A couple of families made the most of the opportunity to pick our brains – was it time to start worrying about certain difficulties; was it time to take action; how were they to take action? Of all the families we spoke to, only one didn't know about speech pathology scope of practice. After a brief Q&A, they were enlightened and had decided that their non-verbal two year old could probably benefit from some help.

So, long after lunch was eaten, but not before the playground was empty of families, we bid the park adieu. With a sea of SPA balloons floating around on the arms of tiny tots, we were happy with a job well done! Thank you to those who made the day what it was

– your efforts are greatly appreciated.

Allison Zadrozny

NSW Public Affairs Portfolio Leader

'Starting the Conversation' around NSW

THIS YEAR'S THEME, 'Start the Conversation' once again motivated many NSW members to get involved in SPWeek. Here is a snippet of some of the things that happened around the state:

- Belinda Hill and Associates made cupcakes for the week and raised \$250 for the Royal Institute for Deaf and Blind Children. They had two local newspaper articles and gave a radio interview for Muslim Community Radio in Bankstown about SLP and our role/message for the week.
- Craig Fairweather and the team at Royal Far West spoke with *The Northern Daily Leader* ahead of SPWeek. He spoke about the Come N See Teletherapy Program.
- Illawarra Shoalhaven Local Health District and ADHC held an information stall at Westfield Warrarong, complete with thickened fluid trials and a colouring-in table for kids.

- Tamworth Hospital and Community Health Centre held an information and cake stall with speech pathology themed cupcakes and lolly teeth and lips for sale. The goodies were a hit and sold out in 15 minutes!



ADHC staff conversation starters.

- Macquarie University students were very busy. Students and staff helped spread the word about communication and swallowing difficulties with free voice screenings offered to members of the local and university communities. This was held in conjunction with Hearing Awareness Week. Students were also treated to a guest presentation by a young man with Asperger's Syndrome and his mother.



Gingerbread decorating and AAC in action.

- The team at the Department of Family and Community Services (Parramatta) had lots of fun incorporating AAC into a morning tea with people requesting and commenting using AAC, while also decorating gingerbread. There were other events that were based on the theme and educating people about AAC too.
- Students from University of Sydney hosted a jellybean guessing competition with funds raised donated to the Australian Aphasia Association. They also made thickened cordial drinks for people to 'start the conversation



Jellybean guessing competition at Sydney Uni.

about communication' – this proved fascinating for both speech pathology students and those from other courses.

- Cerebral Palsy Alliance speech pathologists Jesica Rennie and Dorothea Gray celebrated with colleagues by holding an AAC morning tea and posting communication conversation starters around the office with lunch table conversation starters a real hit!
- ADHC Chatswood held a morning tea for colleagues with 'how to

start a conversation when...? scenarios to get everyone talking!

If you have an event you want to tell us about, please email me at allison.zadrozny@iinet.net.au

Allison Zadrozny
NSW Public Affairs Portfolio Leader

Seminar at the University of Sydney

THE FACULTY OF Health Sciences at the University of Sydney celebrated Speech Pathology Week by hosting the presentation, "Advances in Speech Pathology: Conversations and Collaborations".

Presenters at this event included Professor Leanne Togher, a Research Fellow at the Faculty of Health Sciences and Dr Julia Starling, a speech pathologist based in Sydney.

Prof Togher spoke on her work in the field of communication disorders after traumatic brain injury (TBI) and the creation of TBI Express, a training program for people with TBI and those they communicate with. Prof Togher also presented recent findings from a clinical trial, including an overview of a new TBI assessment tool, which provides ratings of the conversational discourse of people with brain injury.

In addressing this year's SPWeek theme, Dr Starling spoke on the need for professionals to communicate and work together to support young people with language impairment. Dr Starling has a private practice in Sydney where the majority of her cases are school-aged children and adolescents with language-based learning difficulties. At the presentation, Dr Starling also presented the findings of her postgraduate study.

The Heinz Nourish® Smooth Pureed Food range has been developed in consultation with speech pathologists and dietitians specifically for people with dysphagia.

- Mix and match from a variety of 5 meat and 5 vegetable options.
- The range meets Australian Texture C, Smooth Puree standards.
- Supplied in convenient, portion controlled pouches - no need to cook or puree individual meals.
- Quick and easy to prepare - just plate, heat in the microwave and serve.
- Shelf stable with a long shelf life. ^

Where to purchase:

- ✓ **Healthcare or Aged Care Facilities**
To refer a facility, contact your preferred distributor or the Heinz Customer Support Team on **1800 037 058**
- ✓ **Retail Supplier for Health Professionals and People with Dysphagia**



Specialist Supplier of Information and Products for the Management of Feeding and Swallowing Difficulties.

Visit www.safeswallowing.com.au or call **1300 845 655** to speak to Katie Prendergast about the range.

^ Up to 12 months shelf life.

™ Trademark ® Registered Trademark © Copyright 2013 H.J. Heinz Company Australia Limited.

HEINZ
NOURISH
Texture Modified Food



NT's SPWeek

Raising awareness about speech pathology in the Northern Territory

SPEECH PATHOLOGY WEEK was another busy week for speech pathologists in the Northern Territory.

Starting a week early, the NT Branch hosted a stand at the Darwin and Alice Springs Careers Expo. While many students thought we were dentists at first, the stand gave us a great opportunity to share what speech pathology is and all the amazing things about choosing a career in speech pathology. Year 10, 11 and 12 students were particularly interested in the tastes of thickened fluids and we found this a good way to start the conversation about speech pathology.

We launched SPWeek with a stall at the largest shopping centre in Darwin. While this had its challenges (in that people were wary of us trying to sell things or that we were politicians), we were able to talk to members of the public about communication in both adults and children. This included answering questions from concerned parents as well as connecting people to other services such as aphasia groups.

We again displayed our banner on a busy Darwin road, this time opposite the Mindil Markets and on show to many locals and tourists visiting the iconic Darwin Markets.

The week closed with two local speech pathologists, Amy and Margeux, running a Singing Group at the local library



From left: Melissa Lovell and Ashley Harling at the Darwin Careers Expo; Pari Kulkarni, Amy Southwood and Penny Mogg held a speech pathology stall at Darwin's largest shopping centre..



Melissa Ridd and Amy Southwood displayed a banner near Darwin's Mindil Markets to raise public awareness about speech pathology during SPWeek.

to spread the word about communication and how parents can start the conversation with their children. This was very useful as we were able to answer questions and provide information to parents who had concerns, such as the effect of prematurity on their

child's development. The feedback was all positive with parents wishing they could attend something similar more often.

A big thanks to all members who volunteered their time to assist with all the activities we managed to

accomplish over the week. Hopefully we have started the conversation around the NT and this will continue as we look forward to the International Communication Project 2014.

Melissa Lovell
NT Branch President

SPWeek across the state

SPWeek on the Gold Coast

THE GOLD COAST HOSPITAL and Health Service speech pathologists were keen to 'start the conversation' with the broader community this year. There were displays in our hospitals and community health



A SPWeek display at the Broadbeach Library.

centre foyers as well as the Broadbeach Library. Displays featured colourful speech bubbles with interesting facts, generous supplies of SPA fact sheets, the 'Great Australian Communication Story' and information about how to find a speech pathologist. The tradition of fun quizzes in the Robina and Gold Coast Hospital lifts and via internal email also continued

– we now all know what Cher and Whoopi Goldberg have in common and the meaning of psellismophobia! Finally, of course it would not be SPWeek without a café somewhere on the coast being filled with the sound of a gaggle of speechies (think excited chatter) at 7am. This year we convened for the annual breakfast at Ferry Road Markets. Until next year, we will keep the conversation going. After all, this is one of the things we do best!

Dana Gunning

Gold Coast Hospital and Health Service

SPWeek at Griffith University

SPEECH PATHOLOGY students at Griffith University embraced technology and social media to promote Speech Pathology Week 2013: Start the Conversation. Via the University's Facebook and Twitter pages, students at the university were made aware of the prevalence of communication and swallowing disorders; the role of speech pathologists in a variety of settings; and the debilitating consequences communication disorders can have on both the patient and their family.



Griffith University staff and students created a video which received a great response on YouTube during SPWeek.

Being only the second cohort of students to commence the program, it was the aim of the first-year SPA Representatives to start a tradition of promoting SPWeek in the most creative means possible! This was achieved through the creation of a short video involving staff and students of the speech pathology program again promoting vital information about speech, language, fluency and swallowing.

With over 1,000 views on the SPA YouTube channel, Facebook and the video's original webpage, it's safe to say the message was passed on and the conversation started with students, professionals and clients alike. The video was also kindly viewed and shared by clinical educators at Gold Coast Hospital and Wynnum Health Service Centre.

Jodie Connolly and Tiyana Jones
First-year student representatives

SPWeek in Logan Beaudesert

THE SPEECH PATHOLOGY team at the Child Development Service – Logan Beaudesert (CDS LB) embraced SPWeek with much energy and gusto.

We were very proud to have two SPWeek screensavers (developed with the help of the very clever media team)



displayed on all staff computers for a period of four weeks. They were so popular that colleagues in adjoining Qld Health services also requested they be used on their computers. As you can see, they look great and are very 'now'!



SPWeek-themed screensavers were created by the speech pathology team at the the Child Development Service – Logan Beaudesert.

The CDS LB SP team also initiated a colouring-in competition for children visiting all four of our community sites. Colleagues in other allied health disciplines

assisted in highlighting the activity for clients. We made displays at all four sites and they certainly brightened up the waiting areas! Five lucky winners received a copy of the ever popular *The Very Hungry Caterpillar* book – donated by the SP staff.

Positive feedback was received from families and colleagues alike.

Our team also enjoyed the buzz generated by SPA's use of social media. Tweets and FB posts were discussed all week and shared widely. We are looking forward to 2014!

Claire Benham
Senior Speech Pathologist, CDS LB

An event to talk about!

SPWeek in pictures



Cathy Clark and Kim Adams award Sue Horton a competition prize, and (inset) students connect with Sarah Lemon (via Skype) on Rural and Remote issues.

Starting the conversation in SA

IN PREPARATION for SPWeek the SA branch held a 'Start the Conversation Event'. Our aim was to bring students, new graduates and regular members together to learn more about SPWeek, the International Communication Project 2014 and the new structures within the local Branch, as well as gaining information from the crowd on the best ways to communicate with them, their thoughts on a range of topics, including Rural and Remote ideas/issues, and to advertise future CPD events. On the first Friday night in August we had almost 50 people gather to start the conversation together.

The night started with a game aimed at getting people to talk to one another and to have a bit of fun at the same time. Prizes were for the taking and the game took off quickly, with Sue Horton beetling around as if she had power skates on.

Following this we had time for more leisurely sharing, talking and giving feedback, and there was certainly lots of talking going on! We connected with Sarah Lemon via Skype and many chatted with her about Rural and Remote issues and ideas.

The cake and coffee arrived and the cakes were definitely to die for! They were absolutely delicious, and as a consequence no calories could possibly have been put on by anyone.

The night did have to come to an end, with prizes being awarded in many different ways. Sue Horton unsurprisingly won the first competition. Barbara Lyndon took home a prize pack from Janesce, one of our sponsors for the evening, a prize that was so richly deserved but hotly contested. Lindt Chocolates were won by one of the students, Cassandra, who gracefully shared her winnings around the room.

The feedback from the evening was certainly positive, with many younger members keen to help out with a range of projects in the future. Although it was hard to stop people having conversations I think it was certainly a good way for us to get started, and to continue the conversation into the future.

Kim Adams
Community Awareness Portfolio, SA Branch

Speech Pathology Week activities across Tasmania



Newstead Height School, Launceston:
Community Trivia Night and Silent Auction



Launceston: Esk Market Stall



Ravenswood Primary, Launceston: Displays,
activities and morning tea

Victorian SPWeek activities



Longford Primary, Tasmania: Morning tea, activities and displays



Hobart: Salamanca Market Stall



Independent Living Centre Tasmania: Display



Norwood Primary, Launceston: Library and staffroom displays



Pub Night, Launceston: SLP get together

Stephanie Gibb
Speech and language pathologist



Staff and students at La Trobe University get into the spirit of SPWeek.

Speech Pathology Week events at LTU and on Twitter!

STAFF AT LA TROBE and the student-run SALT (The Speech Pathology Association of La Trobe University) group joined forces for SPWeek to increase awareness of the 1.1 million Australians with a communication problem and their ability to benefit from speech pathology intervention.

A number of events were organised over the week, including a stall in the Agora, a sausage sizzle run by final-year students and a “Twitter tute” encouraging students to get involved in our professional online community in Twitter. Students from La Trobe and SALT were also involved in a live chat (#SLP2Bchat) in Twitter on Monday 26 August with other students from Australian and overseas universities. The concept of the inaugural #SLP2Bchat was developed the week before SPWeek, by a student Danielle (@dmkenedy92), who approached Dr Bronwyn Hemsley (@bronwynhemsley) at the University of Newcastle to support Danielle’s first moderated Twitter chat. Following the success of the 26 August, with half a million impressions of this hashtag in Twitter, Dr Hemsley and Rachel Davenport (@rachyroo1972) are co-mentoring two students from The University of Newcastle and La Trobe University in a monthly co-moderated Twitter chat (@dmkenedy92; @Speech_LaTrobe), using the hashtag #SLP2Bchat. The first chat was hugely successful with 65 participants on the night and 120 participants over the duration of SPWeek, and will hopefully be the start of many more #SLP2Bchat involving cross-institutional student collaboration.

Thanks to everyone who participated in SPWeek, particularly SALT president Phoebe Wainer and treasurer Lilli Krikheli. It was hugely enjoyable and many great conversations were started!

Rachel Davenport & Emma McLaughlin

SPWeek celebrations



The WA Branch SPWeek Launch Event attendees were inspired by guest speaker Shane Hopkins, who shared his positive story of rehabilitation and future aspirations after a stroke last year, and Gerri Harris, who shared her rewarding experiences and journey as a speech pathologist.



WA Inspirational Client of the Year was awarded to five-year-old Liam Knights, who has autism and apraxia of speech, and whose continued motivation and hard work in therapy has produced great gains.



Twenty speechies ran in the 2013 City to Surf during SPWeek to raise money for Communicate WA. The team participated in a range of walking and running events, and some even braved a half marathon, with over \$6000 raised.

Trevor Strickland was awarded WA Inspirational Carer of the Year, for his unwavering support and advocacy as a primary carer for his mother who has suffered with severe communication difficulties and dysphagia.



The speech pathologists and speech pathology students at Nulsen arranged a lunch and gave a presentation on the areas of practice in speech pathology, incorporating Social Role Valorisation theory and the WHO-ICF with the speech pathologist's role in supporting adults with profound disabilities, as well as what signs to look out for that may indicate that a speech pathology referral/review may be required.



Hollywood Hospital started the conversation with a main entrance display – including The Great Australian Communication Story, communication accessibility information, and examples of patient “chat books”, “chat sheets” and “walking programs”.



Royal Perth Hospital SPs ran an ‘interactive’ display where they mingled with the public, gave out dysphagia-friendly snacks and drinks, familiarised people with AAC, and got people involved in a ‘Communication Quiz’. Thursday saw a special screening of ‘Aphasia’ the movie (starring Carl McIntyre) with more than a few tears shed.

TRINH Foundation

Speech therapy in Vietnam: Australian volunteers leading the way

OUR VERY OWN Trinh Foundation Australia (TFA; www.trinhfoundation.org) has been coordinating Vietnam's only speech therapy course since 2010, in partnership with the medical university Pham Ngoc Thach University (PNTU) in Ho Chi Minh City (HCMC; formerly Saigon).

TFA is made up of a small group of volunteer speech pathologists and professionals who work together with other volunteers to raise funds, coordinate activities and support the development of speech therapy in Vietnam.

Incredibly, there is no official occupational category of speech therapist in Vietnam, among the health



Speech pathologist Emily Armstrong modelling therapy for students.

professions, yet there is a huge need for communication and swallowing therapy. So our partnership course is the first and only full-time postgraduate program, coordinated, staffed and delivered

mostly by local Australian volunteers and those travelling to Vietnam for anything between two weeks and two years at a time. Now halfway through the course of the second cohort, students are working Vietnamese professionals with leave to study the alternating academic and clinical terms. Vietnamese academics provide lectures and tutorials in foundation knowledge areas.

Every lecture, document, handout and live interaction is interpreted and translated, including clinical supervision interactions. If a lecture is provided by an Australian speech pathology academic, the Powerpoint slides and handouts are all translated into Vietnamese by interpreters employed by TFA in Vietnam. Then, when the lecturer travels to HCMC to provide the lectures in person, a local interpreter is funded by TFA to attend all lectures and interpret everything orally, as well as interpret every phrase of student discussion with the lecturer. It's logistically amazing – and we have been making this happen for nearly three years now.

For more information about how to be involved contact:

Jan Tochowicz: jan@trinhfoundation.org
 Sue Woodward: info@trinhfoundation.org or phone 0410 553 375
 Sally Hewat: Sally.Hewat@newcastle.edu.au or phone 61-2-4921 5159

Alison Winkworth & Sally Hewat



Rural WA didn't miss out either, with SPs doing everything from sending out developmental checklists to parents at playgroups/ day-cares, holding a silent morning tea to prove the power of communication and the difficulties that some people face every day, raising awareness at local shopping centres, broadcasting on radio and wearing costumes to break the ice and start the conversation.



The annual SPWeek student Cocktail night was attended by 80 students from Curtin and Edith Cowan Universities. Students enjoyed cocktails and canapés while networking and celebrating SPWeek. The \$1195 raised on the night went towards the production of a video raising awareness for the important role speech pathologists play in nursing homes.



A big **thank you** to everyone who sent in and gave permission to use their photos. Everyone in WA made a huge effort for SPWeek 2013, and we look forward to a bumper **International Year of Communication in 2014!**
Johanna Eppler
 WA Branch Editor

A note from National Office
 We have noticed the delivery of e-News, email alerts etc may be getting blocked from members using **WA Health email addresses** – if you are concerned that you are not receiving SPA emails please contact NO on **1300 368 835**.

Speech pathologists thanked

Fremantle Hospital SPs took lollies to meetings, had a photo up on HealthPoint, which was picked up by SPA's Twitter page, and even had an article in the *Fremantle Gazette!*



SPA Twitter update

Interesting links tweeted and/or re-tweeted on our Twitter feed in August–September included:

- Thanks to all the students and staff at [@Griffith_Uni](#) for making this great [#SPWeek](#) video! [#starttheconversation](#) (26 August)
- Happy [#SPWeek](#) everyone! Especially to all the amazing speechies making a difference [@Austin_Health!](#) [#starttheconversation](#) (26 August)
- Voting for who to host the 2019 IALP Congress draws nearer – come on, [#slpeeps](#), vote for Melbourne! We have koalas... (27 August)
- Motion in Tas parliament today noting SPWeek&over representatn of severe communicn impairment in yth justice sys. [@TasLeaders](#) (27 August)
- Have you seen this [#aphasia](#) animation from [@TheStrokeAssoc](#)? It's National [#strokeweek](#)! 60% of people who have had a stroke will develop a swallowing difficulty. Unite to stop [#stroke @strokefdn](#) (10 Sept)
- What children can say shapes what they can remember. cool new study on how language shapes thinking (4 Sept)

Join in the conversation and follow Speech Pathology Australia on Twitter: [@SpeechPathAust](#)
Don't forget to get tweeting during our 2013 Book of the Year celebrations! [#BookAwards](#)



Speech Pathology Australia Facebook highlights from August to September included...



SPYce Launch

We had some great feedback in response to posting the presentations from the Speech Pathology in Youth (Justice) Custodial Education (SPYce) Report launch. If you are interested in learning more about the SPYce Project but were unable to attend the report launch on 12 August, make sure you check these videos out!

We showed our support during National Stroke Week from 9–15 September.

60% of people who have had a stroke will develop a swallowing difficulty (dysphagia), while around 20% will have difficulty using speech. A further 30% of all people who have had a stroke will have difficulty articulating ideas or comprehending written or spoken language (aphasia).



SPWeek success

Goolwa's Therapy Lifestyle Centre received a whopping 150 colouring competition entries during SPWeek 2013. Age category and randomly drawn 'incentive' prizes donated from local businesses were awarded to participating children. This fabulous story was published in *The Victor Harbor Times* with a photo of speech pathologist



Clare Sutcliffe sitting among a sea of entries. Well done to everyone who took the time to 'start the conversation' in their own way during 2013's SPWeek!

“The phone is such a lifeline ...”

“... I advise many of my clients with speech or hearing impairments to use the NRS.”

The **National Relay Service** makes it easier for people with complex communication needs to retain their networks and independence – to phone a friend, contact the bank or book a taxi.

Learning to use the NRS is straightforward. Training is free and can be done in your client’s home.

Relay calls are available 24 hours a day and cost about the same as a local call.

The NRS can provide customised support for people with a speech or hearing impairment and their families.

Ask for our **free DVD** and other resources.



- 1800 555 660
- helpdesk@relayservice.com.au
- www.relayservice.com.au



A phone solution for people who are deaf or have a hearing or speech impairment.



An Australian Government Initiative

Social Skills Resources



Therapy tools to improve communication and social skills, suitable for children on the Autism Spectrum.



All resources have been chosen by a Certified Speech Pathologist.



Order Online

www.socialskillsresources.com.au

E : socialskillsresources@bigpond.com



www.facebook.com/SocialSkillsResources

For Sale... the whole box and dice!

A complete range of paediatric clinic resources: assessment tools*, resources books, photocopiable workbooks, games, toys, picture story books, clinic furniture, and more!

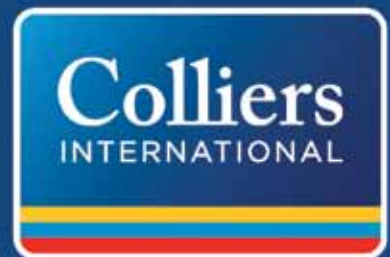
Gathered over 10 years.
Suitable for a 0-12 year age group.
All in excellent condition.

Pick up from Melb metro only.

Email dinocorda@bigpond.com for inventory.

**Excludes Pearson assessments*

For Lease



50% LEASED



Exciting New Medical Suites - Benowa, Gold Coast

- Close proximity to Pindara Private Hospital, Full medical zoning
- Suitable for paediatric care, 50% leased by paediatric dentist
- Only 3 suites remaining 94m² - 191m²
- Scheduled for completion January 2014

Ed Howard: 0449 955 244

www.colliers.com.au/500850739



Assessment and Intervention

Presented by **Professor Rhea Paul**

Day 1 Seminar content

Today's workshop aims to provide an update on the following areas:

- Overview of current theories of the causes of ASD.
- Analysis of the DSM-5 for Autism Spectrum Disorder.
- The role of a speech pathologist in the diagnosis of an Autism Spectrum Disorder and Social (Pragmatic) Communication Disorder.
- Diagnosis of ASD in toddlers.
- Outcome predictors in ASD.
- Pivotal skills for the acquisition of spoken language in preschoolers with ASD.
- Evidence based approaches for improving early communication in very young children with ASD.
- Strategies for increasing preverbal and early verbal communication in children with ASD including a review of Rapid Motor Imitation Antecedent Training and AAC approaches.

Day 2 Seminar content

Today's workshop aims to provide an update on the following areas:

- The development of pragmatic language skills that typically occur in children during preschool and secondary school from 3 years to 16 years.
- Assessment of pragmatic disorders in young children from preschool to middle primary.
- Establishing intervention goals with parents and teachers
- Strategies for the management of children with pragmatic disorders from preschool to middle primary.
- The role of peers in social skill intervention.
- How to maximize the social participation of children with ASD.
- Including students with ASD within the mainstream classroom curriculum.

HOW TO BOOK

Please contact Orla for all enquiries via email orlam@irabina.com or phone on 03 9839 3003

COST

\$550 Early Bird closes 31st October 2013

\$595 Standard Registration from 1st November 2013

VENUE

Melbourne Parkview Hotel
Conference 562
St Kilda Rd Melbourne
VIC 3004

We are a registered training organisation (RTO) offering a range of specialised disability training.

Our courses are informed by a person-centred and family-centred philosophy and demonstrate strong commitment to evidence based practice.

We offer the following courses for Speech Pathologists:

Assistive technology – Speech generating devices

This course aims to increase knowledge and understanding in the areas of assessment and implementation of speech generating devices for people with complex communication needs. It provides the participants with the principles of assessments and intervention strategies and the role of the support team.

Working with people with disability

This course aims to prepare you to work with people with a disability, including those with complex communication needs - as colleagues and as clients. It provides information on understanding cerebral palsy, best practise frameworks in supporting individuals with complex communication needs; and frameworks and practical demonstration of engagement and collaboration with clients and families.



For more details on this course and to view all of our courses visit cerebralpalsy.org.au or telephone Fiona King (02) 9975 8715

ROOMS FOR RENT

SOUTH AUSTRALIA

Consulting Room for lease for Speech Pathologist – Parkside SA

Newly refurbished room in an established Psychology/Allied Health Practice.

Close to Unley Road and CBD. Air conditioned with pleasant waiting room and staff facilities, plenty of storage for equipment.

Available on a sessional or F/T basis Mon–Sat.

Access to Eftpos, Hicaps, wi-fi and fax. Very reasonable rates.

Contact **Sophie Floreani** on **0411 774 905** or email s.psych@bigpond.com



Writing Road to Reading 1 Teacher Training Course

Gain the skills to teach writing, spelling and reading to primary school students.

January and July
Sydney and Melbourne

Contact

Susan Byrne
02 9412 1966

spaldingaust@optusnet.com.au

Apply the latest research to your clinical practice

From the comfort of your home or office, earn professional development hours and gain practical tools and strategies you can apply to your work the very next day.

Enjoy these and other Hanen e-Seminars Live or On Demand:

Coaching Parents in How to Play

Involving Parents in Diagnostic Intervention for Toddlers with Suspected Motor Speech Difficulties

Starting Early: Red Flags and Treatment Tips for Toddlers on the Autism Spectrum

- ✓ **Eligibility expanded** – Your speech pathology assistants can now attend!
- ✓ **Group pricing available** – Attend with your whole team and save!

Learn more at
www.hanen.org/onlinetraining

Two more reasons SPA partners with Guild Insurance...

more cover & two months extra at no additional cost.



We've been looking after the specific insurance needs of speech pathologists since 2004 and we now provide a range of additional new covers under our combined liability policy, including expanded cover for legal fees, intellectual property breaches, liability for loss of documents and much more.

With industry-leading expert legal support when you need it and a 24/7 claims line, you'll have peace-of-mind knowing you're protected with Guild Insurance.

Contact us for more information, or a no obligation consultation today.

 **1800 810 213**  guildinsurance.com.au

Insurance issued by Guild Insurance Ltd, ABN 55 004 538 863, AFSL 233791. Guild Insurance supports your association through the payment of referral fees. This information is of a general nature only and is not intended to be advice. It is important for you to read the policy before you make a decision about an insurance product. The 14 month for 12 offer is only available to new and renewing customers who purchase or renew their existing policy before the 1st of March 2014. Subject to underwriting approval. Terms and Conditions apply (including exclusions and limitations). Please contact Guild Insurance on 1800 810 213 for further information.





“I recently transferred money internationally via my **SPA member benefit** program.

The rates offered by OzForex were **so much more competitive** than any of the big banks!”

OZFOREX
Foreign Exchange Services

Member
ADVANTAGE®

About this benefit

Do you need to pay an international invoice, purchase a property or send money to family members overseas?

Our partnership with OzForex allows SPA members to transfer money worldwide at significantly lower rates than banks.

Benefits to members include:

- £ Free transfers for SPA members
- \$ No receiving bank fees in most countries
- € Phone access 24-hours a day, 5 days a week
- ₹ Online access 24/7
- ¥ Competitive foreign exchange rates across 47 currencies

Register today by calling 1300 300 424 or visit memberadvantage.com.au/spa/ozforex