

Master Flash®

SOLAR APPLICATIONS

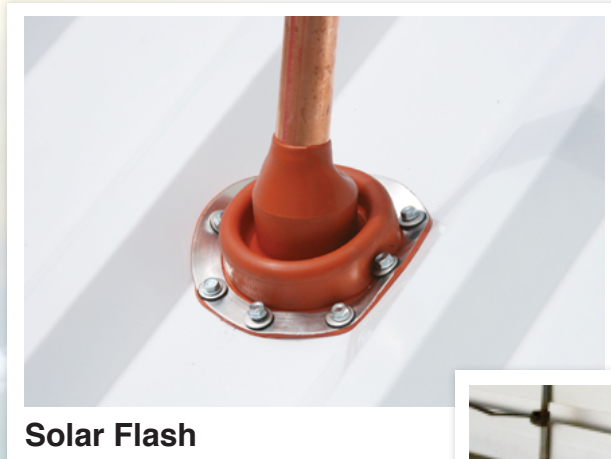
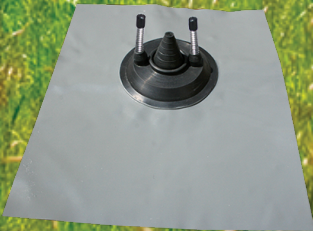
Specifically Designed For Solar & Electrical Applications

1/2016

Master Flash®
Roof Pitch Calculator



20
YEAR
FLASHING
WARRANTY



Solar Flash



Standard Mini



Solar Multi-Port-MR



aztec
washer
company

when reliability counts



Aztec Washer Company 13821 Danielson Street, Poway, CA 92064
1.800.WASHER 5 (927-4375) • Ph: (858) 513-4350 • Fax: (858) 513-4305 • info@aztecwasher.com • www.aztecwasher.com

Master Flash®

Specifically Designed For... Solar & Electrical Applications

ISO Quality, Price & Availability / Two Compounds

	EPDM	SILICONE
ADVANCED OZONE RESISTANCE tested to...	70 hour @ 500 pphm	70 hour @ 500 pphm
HIGH TEMPERATURE RESISTANCE		
Tested to		
Intermittent	+135°C (+275°F)	+260°C (+500°F)
Continuous	+100°C (+212°F)	+225°C (+437°F)
LOW TEMPERATURE RESISTANCE tested to...	-55°C (-67°F)	-74°C (-101°F)
COMPRESSION SET Maximum...	25%	50%

*Complete specification data and testing methods are available upon request.



Design Excellence

Aztec's flexible design meets all roofing needs. Sleeve flexibility accommodates vibration and pipe movement caused by expansion contraction. The soft aluminum base easily conforms to most metal roof profiles.



Weather Protection

Made of E.P.D.M. or Silicone, these flashings are compounded specifically for maximum resistance to weathering due to ozone and ultraviolet light.



Base Flexibility

The base is designed to form a seal on most panel configurations and roof pitches regardless of pipe location.



Easy On-Site Customization

Fast, one piece construction allows for easy on-site installation in usually 5 minutes.



Modification Made Simple

Easy to see pipe diameters make for painless on-site installation.

Mini Standard Master Flash®

Smallest flashing available!



Pipe Range: 1/8"– 3/4" (3 - 19mm) • **Overall Height:** 3/4" (19mm)

Base: Square 2-1/4" (57mm) • **Compound:** EPDM and Silicone • **Color:** Ten color options available



Standard Master Flash®

The Original!



Pipe Range: 1/8"– 28-1/2" (3 - 724mm) • **Compound:** EPDM and Silicone

Color: Ten color options available • **Sizes:** Mini to Maxi



Master Flash® was used to create a new engineering standard for profiled roofing by the International Association of Plumbing and Mechanical Officials (for the Uniform Plumbing Code) and remains the only product listed. These products are also listed for use with Type B vents.

The addition of fire retarding agents milled directly into the rubber compound created a self extinguishing feature which enables it to be used with type "B" vents. Listed with IAPMO certification No. 3121

Universal Master Flash®

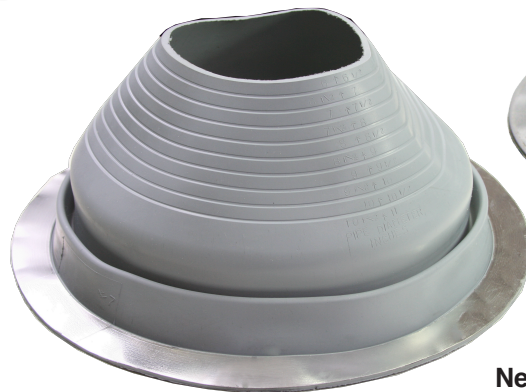
All Around Design Excellence

This universal flashing has been designed to fit virtually all panel configurations. Sleeve flexibility absorbs vibration and pipe movement caused by expansion/contraction. Easy on-site customization can accommodate all normal installations.

Pipe Range: 1/4"– 19" (6 - 482mm) • **Compound:** EPDM and Red or Grey Silicone
Color: Twelve color options available • **Sizes:** Mini to #9



Red Silicone



NEW Grey Silicone

New Dark Grey EPDM

Solar Flash Master Flash®

Specifically designed for solar applications

Pipe Range: 3/4"– 1" (19 - 25mm) • **Top Opening:** .60" (15mm)

Overall Height: 2-1/2" (63mm) • **Base:** Round 4" (63mm) • **Compound:** EPDM and Silicone

The simple round base flashing is available in EPDM and silicone with a pre-cut hole for pipe sizes 3/4" to 1" (19 - 25mm) allowing for minimal on-site preparation and assembly.

The pitch canal allows for maximum flexibility, easily accommodating up to a 60 degree pitch without affecting performance.

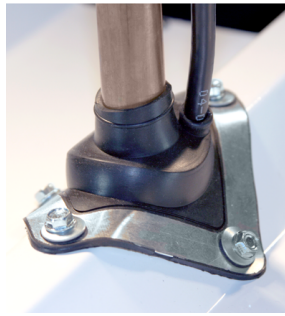


Red Silicone



Mini-Port Master Flash®

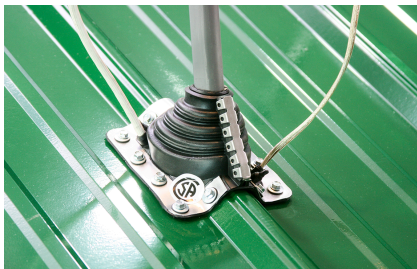
"2 Port Design" Handling Many Jobs Multiple Functions



Pipe / Cable Range: Center 0"– 13/16" (0 - 20mm)
Pipe / Cable Range: Side Port 1/4"– 3/8" (6.3 - 9.6mm) • **Base:** Square 3" (76mm)
Compound: EPDM and Silicone

Multi-Port Master Flash®

Two Applications • One Design

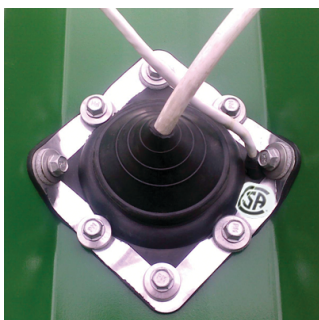


Pipe Range: Standard 1/4"– 2-3/4" (6 - 70mm)
Pipe Range: Retrofit 1-1/4"– 2-1/4" (25 - 57mm)
Pipe / Cable Range: Center 1/4"– 3/8" (6.3 - 9.6mm) • **Pipe / Cable Range:** Center 1/4"– 3/8" (6.3 - 9.6mm)
Base: Square 4-1/2" (114mm) • **Compound:** EPDM and Silicone
 No hassle stainless steel gripper to secure retrofit applications
 Accommodates FOUR 1/4" (6mm) or 3/8" (9.6mm) lines and One pipe 1/4" - 2-3/4" - (6 - 70mm)

Middy Master Flash®

2 Port Design for the Metal Roofing Industry

Pipe Range: Center 0"– 2" (0 - 50mm)
Pipe / Cable Range: Side Port 1/8"– 3/8" (3 - 9.6mm) • **Base:** Square 3-3/4" (95mm)
Compound: EPDM and Silicone



Solar Multi-Port - MR Master Flash®

5 Port Design for the Metal Roofing Industry

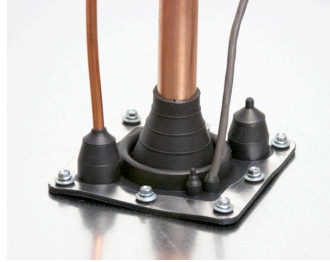
**20
YEAR
WARRANTY**



Pipe / Cable Range: Center 0"– 1-15/16" (0 - 49mm)

Pipe / Cable Range: Side Ports 3/8"(9.6mm) • Pipe / Cable Range: Side Ports 3/4"(20mm)

Base: Square 4-1/2" (114mm) • Compound: EPDM and Silicone



Solar Multi-Port - CT Master Flash®

5 Port Design for the Clay Tile roofs

**20
YEAR
WARRANTY**

No Fasteners Required! Just WeatherMaster™ Sealant

Pipe / Cable Range: Center 0"– 1-15/16" (0 - 49mm) • Pipe / Cable Range: Side Ports 3/8"(9.6mm)

Pipe / Cable Range: Side Ports 3/4"(20mm) • Base: Square 4-1/2" (114mm) • Compound: EPDM and Silicone



Metal Roof Sealant WeatherMaster™

Extrudes down to zero degrees Fahrenheit • Permanently flexible - won't crack • Available in all flashing colors
99% Solids for minimal shrinking • Joint movement capability +/-50% • Colors Available: Black, Grey, White, Red
(Terra Cotta) Translucent (Clear)

Comparison Guide	Metal Roof Sealant	VOC Solvent	Silicone	Urethane	Tripolymer
Paintable	1 - 2 hours	2 - 4 hours	No	2 - 7 days	24 hours
Shrinkage	1%	35%	5%	5%	50%
Flexibility	50%	25%	25%	25%	25%
Cold Weather Extrusion	0°	20°	-35°	32°	-40°
VOC - compliant	Yes	Yes	Yes	Yes	Yes
Solvent Free • Isocyanate Free • Earth Friendly	Yes	No	No	No	No
Gap Filling	1"	1/2"	1/2"	1/2"	1/2"
Odor	Slight	Heavy	Mild	Mild	Heavy
Service Temperature (°F)	-75° to 300°	-20° to 200°	-45° to 350°	-40° to 180°	-40° to 180°



Solar Multi-Port - AL Master Flash®

“Environmentally safe” lead free aluminum base.

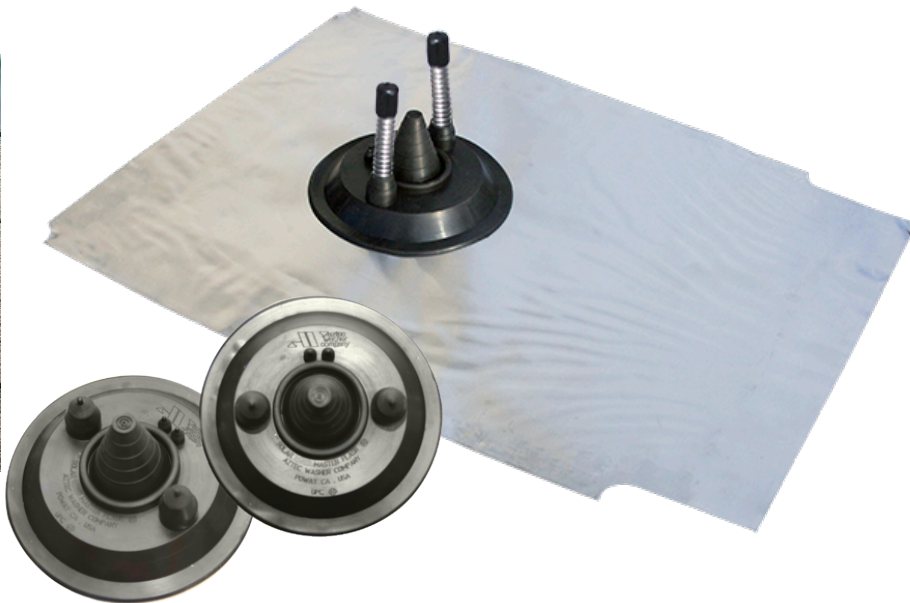
**20
YEAR
WARRANTY**

Pipe / Cable Range: Center 0”– 1-15/16” (0 - 49mm)

Pipe / Cable Range: Side Ports 3/8”(9.6mm)

Pipe / Cable Range: Side Ports 3/4”(20mm)

Base: Aluminum Square 17-3/4” x 24” (450 x 600) • **Compound:** EPDM and Silicone



Solar Multi-Port - LD Master Flash®

Powder Coated Safe Lead base

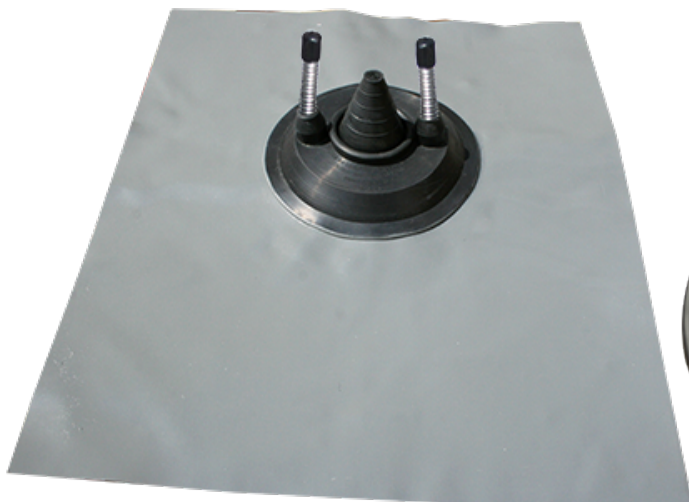
**20
YEAR
WARRANTY**

Pipe / Cable Range: Center 0”– 1-15/16” (0 - 49mm)

Pipe / Cable Range: Side Ports 3/8”(9.6mm)

Pipe / Cable Range: Side Ports 3/4”(20mm)

Base: Lead Square 16” x 19-1/4” (410 x 490) • **Compound:** EPDM and Silicone



Residential Master Flash®

Aluminum Base.

Pipe Range: 1/4"– 18" (6 - 457mm) • **Compound:** EPDM and Silicone
Base: Aluminum • **Sizes:** Mini to #3



A "C20" ASTM additional requirement was added to assure conformance to the most stringent ozone/weathering specifications available. This addition allows the rubber a 20 year life.

The addition of fire retarding agents milled directly into the rubber compound creates a self extinguishing feature which enables it to be used with type "B" vents. Listed with IAPMO certification No.3121

The built in 20° pitch allows adaptability to almost any roof pitch including 45°

The pull tab design and easy smooth tear grooving is intended to eliminate razor knives and allow for a circular hole



Res-Lead Master Flash®

"Protective coated safe lead base"

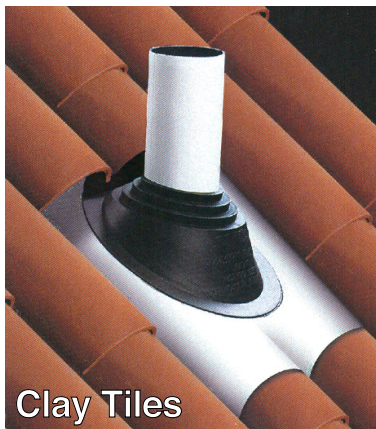
Pipe Range: 1/4"– 18" (6 - 457mm) • **Compound:** EPDM and Silicone
Base: Protective coated safe lead • **Sizes:** Mini to #3



A "C20" ASTM additional requirement was added to assure conformance to the most stringent ozone/weathering specifications available. This addition allows the rubber a 20 year life.

Like the Residential Master Flash® the built in 20° pitch allows adaptability to almost any roof pitch including 45°

The pull tab design and easy smooth tear grooving is intended to eliminate razor knives and allow for a circular hole



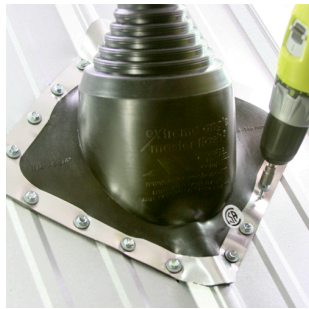
Extreme Angle Master Flash®

Specifically designed for **Metal Roofing Industry,**

For applications with a 35 to 65 degree angle, while accepting & responding to the most commonly encountered pipe penetrations.

Pipe Range: 1/4"– 5-3/4" (6 - 146mm) • **Base:** Square 11" (279mm) • **Compound:** EPDM and Silicone
Modification made simple Easy to see pipe diameters make for painless on-site installation.

The built in 40° degree pitch allows to handle any extreme roof pitch (35° - 65°), sleeve flexibility accommodates vibration and pipe movement caused by expansion/contraction. Easy on-site customization accommodates all normal installations.



Electrical Mast Connection Master Flash®

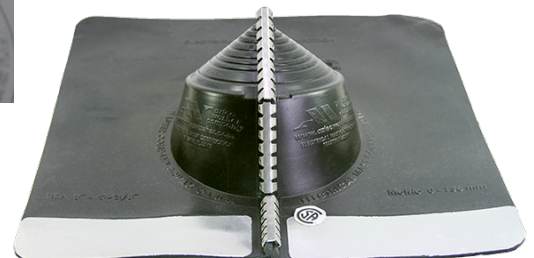
Specifically designed for the **Residential Roofing Industry,**

Pipe Range: 0"– 5-3/8" (0 - 136mm) • **Base:** Square 15" (381mm) • **Compound:** EPDM

The built in 20° pitch allows adaptability to almost any roof pitch including 45°

Easy to see pipe diameters make for painless on-site installation.

No hassle stainless steel gripper to secure retrofit application



P36 Saddle Washers

Our new "polymer 36" is a result of industry demand and available technology. The unsuitable memory and wear characteristics of sponge and foam have been eliminated. The unsuitability of powder painting the part after the sponge has been glued on has been eliminated. Polymer 36 has been developed to withstand the temperatures required to fully cure powder paint and still retain a full and complete bond between the polymer and its aluminum substrate. Memory characteristics very similar to solid polymers have been achieved through experimentation in chemical technologies and our own expertise in vulcanizing.

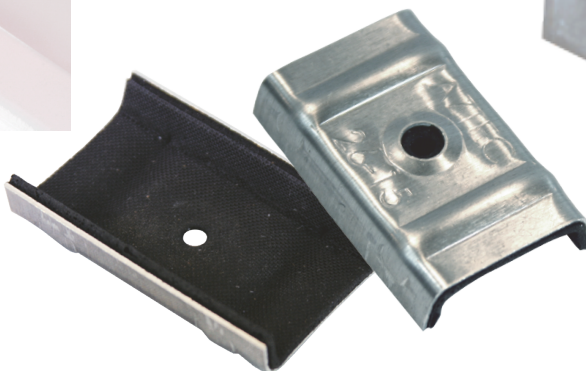
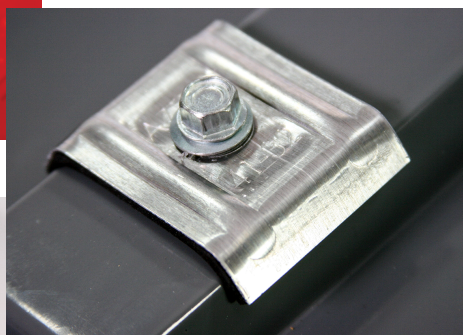
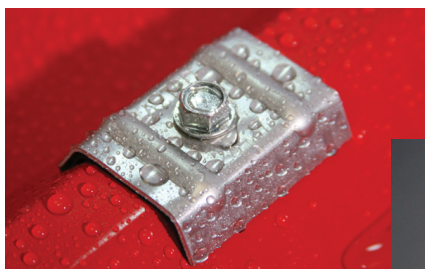
The hole diameter in the rubber is smaller than the hole diameter in the metal

Powder painting is possible in various colors

.040" (1.0mm) thick Aluminum alloy sheet

Reinforcing ribs

EPDM elastomer "Polymer 36" vulcanized to aluminum





Conserving is good for Business and the Environment

Aztec Washer Company Our Green Statement / Policy

On a sales trip in early 2007, a very sharp man asked how the "Green Movement" had influenced our company. Although we are a family oriented company that has always been socially and environmentally conscious, I have never been asked that question before and it prompted the following statement.

Throughout the years, **Aztec Washer Company** has continued to research and implement new policies to conserve and protect our natural resources and reduce energy consumption wherever possible. This policy is applied to our manufacturing process as well as our general use. We are proud to say that we recycle all of our scrap materials from the production process throughout packaging and shipping.

Aztec also designed and produced the very first and only bonded washer/screw head powder paint and assembly machine in use today. With the removal of harmful VOC's no longer a concern for **Aztec**, we chose to make this revolutionary paint line available to the rest of the world.

Aztec will continue to pursue new avenues for protecting the world's resources. In pursuit of those efforts, we have employed the services of an Energy Curtailment Specialist to advise new and innovative ways we can reduce energy and preserve our environment.

Respectfully Yours,

Matthew De Graan COO

Other Quality Aztec products



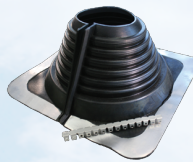
35 Year Master Flash®



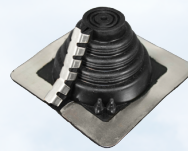
Standard Master Flash®



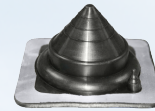
Standard Mini Master Flash®



Multi-Flash Master Flash®



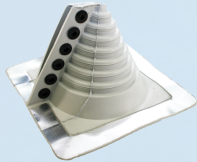
Multi-Port Master Flash®



Middy Master Flash®



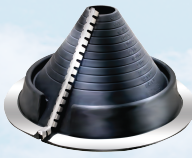
#2-Vent Master Flash®



Retrofit Master Flash®



Universal Master Flash®



Universal Retrofit Master Flash®



Solar-Flash Master Flash®



Square Vent Master Flash®



Solar Multi-Port MR Master Flash®



Residential Master Flash®



INTERNATIONAL HEADQUARTERS

13821 Danielson Street, Poway, CA 92064 • 1-800-WASHER 5 (927-4375) • Tel: 1-858-513-4350
 Fax: 1-858-513-4305 • e-mail: sales@aztecwasher.com • web-site: www.aztecwasher.com

• **Aztec (UK) LTD.:** Unit 55, Enterprise Trading Estate Hurst Lane, Pedmore Brierley Hill, West Midlands DY5 1TX, United Kingdom • Tel: (+44) 1384 573444 • Fax: (+44) 1384 572029
 e-mail: sales@aztec-midlands.co.uk • web-site: www.aztec-midlands.co.uk

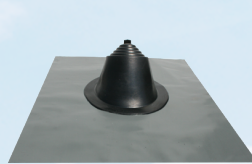
• **Aztec International S.A.:** ul. Bulgarska 63/65 60-320 Poznan, Poland
 Tel: (+48) 61 867 60 84 • Fax: (+48) 61 867 34 44 • e-mail: aztec@aztec-international.eu
 web-site: www.aztec-international.eu

• **Aztec Dichtscheiben GmbH** Lindenstrasse 11 D-57334 Bad Laasphe Germany
 Tel: (+49) 2752 1353 • Fax: (+49) 2752 1728

• **Aztec Mexico:** Serv.y Maqs.Intls.SAdeCV. tel: (+52) 665 6542571 Fax: (+52) 665 6550796
 e-mail: soto@smimx.net • web-site: www.aztecwasher.mx

• **Aztec Australasia** Unit 21, 111 Lewis Rd Wantirna South, VIC 3152 Tel: (+03) 9801 1000
 Fax: (+03) 9801 1055 • e-mail: info@aztecau.com.au • web-site: www.aztecau.com.au

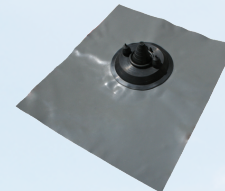
To see our complete product line go to www.aztecwasher.com



Res-Lead Master Flash®



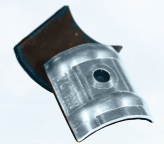
Solar Multi-Port AL Master Flash®



Solar Multi-Port LD Master Flash®



Master Seal®



P36 Saddle Washer



Master Flash®, Universal Master Flash®, Multi-Flash®, and Master Seal®, are trademarks of Aztec Washer Co., Inc. For technical support call: 1-800-WASHER 5 (927-4375) (outside CA only) CA callers: (858) 513-4350