

EDMONTON  
*All in.*

**WE MOVE  
MOUNTAINS  
EVEN THOUGH  
WE DON'T  
HAVE ANY.**

**Watch Tower, Bible and Tract Society of Canada**  
**Jehovah's Witnesses' 2017 Regional Convention**

The Jehovah's Witnesses have been organizing spiritual gatherings for over 120 years. The Regional Convention is an educational forum to amplify collective impact -To come together to improve family life , maintain positive relationships, promote healthy and balanced living, respect authority and above all, celebrate love of God. Moreover, your conference coordinators are tasked with delivering on an inspiring conference and destination experience for the delegates and families in the city.

**YOU****EDMONTON**  
*All in.***US**

At Edmonton Tourism we have a history of delivering successful events. We feel that when an organization commits to a destination that that destination must provide clear commitments to your organization as well. In Edmonton, we know how to make things happen. We're more than a meeting space; we're a city of collaborators who work with planners, and make new connections to achieve mutual success.



## **ABOUT EDMONTON**

Edmonton is the capital city of Alberta, Canada and North America's northernmost city with a population of a million plus. We are famous for our love affair with festivals, fab shopping, lively arts and music scene, sprawling picturesque river valley, and Instagram-worthy food for every taste. We have world-class venues, all the best hotels and an international airport that flies to 60 worldwide destinations non-stop. We are a modern urban centre in the heart of wilderness, but it's the warmth of our people and their welcoming spirit that truly make Edmonton different than other cities.

## **ALBERTA'S CAPITAL CITY**

A million plus Edmontonians call Alberta's capital home. They're the entrepreneurs, experts and hosts that can help turn your opportunities into reality. Famous for our festivals, lively arts and music scene and sprawling picturesque River Valley, we offer much more than just places for your delegates to eat, sleep, and be entertained.

## **CANADA'S CATALYST CITY**

Edmonton is a catalyst for change. And we're not talking about the type of change you find in your sofa. Our dream team will work with yours to take your vision and turn it into "unforgettable" for your delegates. How? With creative solutions, a can-do attitude and a citywide network of doers and makers eager to roll up their sleeves and get things done.



# FUNDING

---

Edmonton is a city that knows what it takes to make things happen. The difference that funding can make to an event, and how those events contribute to your long-term success, is undeniable. This is just another one of the ways we're *All In*.



# \$366,290.95

## EDMONTON ADVANTAGE FUNDING

We understand the value your program brings to a destination and we also understand that you are looking for a destination that can allow your program to grow. Our single most significant contribution is the **Edmonton Advantage Funding**. Edmonton Tourism administers this industry driven funding mechanism. It is designed to attract organizations that will use:

- i) **More than 650 room nights and**
- ii) **Two or more Edmonton venue or hotel partners.**

Given the expected impact of your annual event, this enhancement would be substantial in nature. The Edmonton Advantage goes directly to your organization or can be applied to offset meeting costs.

ROOM NIGHTS PRODUCED	ELIGIBLE ROOM USAGE REBATE	ELIGIBLE EDMONTON ADVANTAGE SPONSORSHIP SUPPORT	TOTAL SPONSORSHIP & ROOM USAGE REBATE AMOUNT*
<b>3000-6000</b>	\$33,255.97	\$30,000.00	<b>\$63,255.97</b>
<b>6001-9000</b>	\$66,523.03	\$65,000.00	<b>\$131,523.03</b>
<b>9001-12000</b>	\$99,779.01	\$100,000.00	<b>\$199,779.01</b>
<b>12001-15000</b>	\$133,034.98	\$130,000.00	<b>\$263,034.98</b>
<b>15001 or more</b>	\$166,290.95	\$200,000.00	<b>\$366,290.95</b>

\*Total rebate is inclusive of the following eligible funds: **Edmonton Advantage Room Usage Rebate** & an additional **Edmonton Advantage Sponsorship Support**.



# VENUES

---

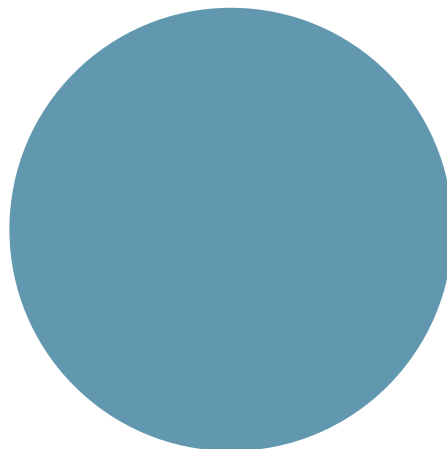
Large or small, modern or historic, mind-blowing or mind-expanding, Edmonton surely has the ideal space for your next event. More importantly —our meeting spaces aren't just rooms; they're incubators for great ideas and connections that will foster better business for you. From the engaging and educational to the forward-thinking and flexible, delivering successful events is in our DNA.

# A MEETING IS AN OPPORTUNITY TO EMBRACE CHALLENGES AND CHAMPION CHANGE.

**VENUES** Edmonton has everything you need to host a conference of your size. In this document you will find that along with your meeting space at the **Northlands Coliseum** or **ICE District**, we have included a selection on hotels for your delegates in either the **Downtown**, **West End** or **Southside** areas. As your central point of contact, trust that we are here to walk you through each option and have the experience and track record to deliver an amazing event every time.

**LOCAL SUPPORT** When a citywide network of doers and makers roll up their sleeves and get things done, big things happen. It's a can-do philosophy. An all-in attitude. It's what makes Edmonton, Edmonton.

We've spoken to other Edmontonians, and they're as excited as we are to be your next host and to share that undeniable Edmonton spirit.





A CONFERENCE  
IS A CONFERENCE  
IS A CONFERENCE  
**UNTIL YOU HOST  
IT HERE.**

---

EDMONTON  
*All in.*

IGNITE FESTIVAL 2015, SHAW CONFERENCE CENTRE | PHOTO BY AMPERSAND GREY






# ACCOMMODATIONS

---

Dividing the city of Edmonton is our sprawling picturesque River Valley. Stay north of the river in Downtown for connections to everywhere you want to go, explore unique attractions in the Westend, or soak up historic Edmonton charm on the southside. Our accommodations offer more than just four walls; they're the hub of an unforgettable stay for your delegates.

**EDMONTON**  
*All in.*





# DOWNTOWN ACCOMMODATIONS

From taking in the fine arts and iconic architecture of the Art Gallery of Alberta to walking, running or biking through the captivating nature of Downtown's river valley, Canada's largest urban park, Edmonton's Downtown has an energy that your delegates will want to be a part of.

Staying in one of Downtown's 14 hotels will help your delegates pack some pleasure into their business trip.

**Location:** Heart of Edmonton, north of the River Valley  
**Driving times:** 25 minutes from Edmonton International Airport



## Downtown Room Block Overview/ Jehovah's Witnesses' 2017 Regional Convention

HOTEL	PEAK ROOMS	RATE* (FROM)	CONCESSIONS
<b>Chateau Lacombe</b>	200	\$119.00	2 complimentary Executive Suite upgrades, 2 Complimentary Jr. Suite Upgrades and 6 King upgrades, 1 in 40 complimentary rooms, free Wi-Fi
<b>Coast Edmonton Plaza</b>	110	\$110.00	Complimentary Wi-Fi
<b>Courtyard by Marriott</b>	90	\$119.00	Breakfast at discounted rate of \$10.00, parking at discounted rate of \$25.00, free WiFi
<b>Delta City Centre Hotel</b>	50	\$109.00	Complimentary upgrades to one bedroom suites, free Wi-Fi
<b>Fairmont Hotel Macdonald</b>	100	\$189.00	1 in 50 Complimentary rooms,
<b>Grant MacEwan University</b>	240	\$70.00	Reduced parking rate of \$13.00, free fitness access
<b>Hyatt Place Downtown</b>	200	\$149.00*	Complimentary breakfast, free Wi-Fi, discounted heated parking at \$15.00 per day, 5 complimentary upgrades for VIPs, 5 complimentary amenities for VIPs, 1 in 40 complimentary rooms
<b>Matrix Hotel</b>	100	\$155.00*	Breakfast included, complimentary afternoon wine tasting included, complimentary parking, free Wi-Fi
<b>Ramada Edmonton Hotel &amp; Chateau Nova Kingsway</b>	262	\$109.00	Breakfast included in rate, complimentary parking, free Wi-Fi, 1 in 30 complimentary rooms
<b>Sutton Place Hotel</b>	225	\$129.00	1 complimentary room for every 40, 5 complimentary upgrades to Executive Suites, Complimentary WiFi
<b>The Westin Hotel</b>	300	\$104.00	Complimentary internet in guestrooms, complimentary early check in and late check out, 3 complimentary amenities for VIPs, Double SPG Points to planner

\*Rates based on an escalator  
 All rates are quoted as non-commissionable

Please note the rate provided here is the rate that the majority of your room block has been quoted at.  
 Please review the hotel's individual proposal included in this document for additional room category rates.

**EDMONTON**  
*All in.*



# SOUTHSIDE ACCOMMODATIONS

When your delegates stay in the Southside, they'll be surrounded by rich history, modern style and easy access to top venues.

Scenic walks through the River Valley, a breakthrough food scene, and music and cultural festivities abound year-round. Featuring 16 hotels, the Southside is known for charming hospitality unique to Edmonton.

**Location:** Central Edmonton, south of the River Valley  
**Driving times:** 20 minutes from Edmonton International Airport



## Southside Room Block Overview/ Jehovah's Witnesses' 2017 Regional Convention

HOTEL	PEAK ROOMS	RATE* (FROM)	CONCESSIONS
<b>Campus Tower Suites</b>	56	\$129.00	Complimentary internet, Reduced Parking of \$10.00 per vehicle
<b>Delta Edmonton South Hotel and Conference Centre</b>	50	\$105.00	Complimentary internet, complimentary parking, breakfast included rate at \$125.00
<b>Four Points by Sheraton Edmonton South</b>	40	\$109.00	Complimentary internet, complimentary parking
<b>Holiday Inn Conference Centre Edmonton South</b>	91	\$109.00	Complimentary internet, complimentary breakfast, complimentary parking
<b>Lister Hall – University of Alberta</b>	710	\$49.00*	Complimentary internet
<b>Radisson Hotel Edmonton South</b>	150	\$125.00	Complimentary Wifi, breakfast included, 1 complimentary Executive suite for event duration, 1 complimentary upgrade, 1 complimentary pre-planning meeting hosted at hotel
<b>Renaissance Edmonton Airport Hotel</b>	50	\$169.00	
<b>Sawridge Inn and Conference Centre Edmonton South</b>	105	\$105.00	Complimentary parking, breakfast included, 10% off Food in hotel restaurant and lounge
<b>Super 8 Edmonton South</b>	55	\$100.00	Complimentary parking, breakfast included
<b>Travelodge Edmonton South</b>	40	\$89.00*	Complimentary parking, breakfast included, quad occupancy

\*Rates based on an escalator  
 All rates are quoted as non -  
 commissionable

Please note the rate provided here is the rate that the majority of your room block has been quoted at.  
 Please review the hotel's individual proposal included in this document for additional room category rates.

**EDMONTON**  
*All in.*



A man is surfing on a yellow surfboard in turquoise water. The water is splashing around him, and he is looking towards the camera. The background is a large, bright green rectangular area containing text.

# WESTEND ACCOMMODATIONS

From a day of retail therapy at the world-famous West Edmonton Mall to exploring more than 300 exotic and native animals at the Valley Zoo, the Westend's unique attractions make it the go-to destination for memorable experiences. Featuring 17 hotels, close access to the airport and a variety of world-class sites and attractions, there's no shortage of entertainment for your delegates.

**Location:** North-west of Edmonton's River Valley  
**Driving times:** 30 minutes from Edmonton International Airport,  
20+ minutes from Downtown



## Westend Room Block Overview/ Jehovah's Witnesses' 2017 Regional Convention

HOTEL	PEAK ROOMS	RATE* (FROM)	CONCESSIONS
<b>Best Western Plus Westwood Inn</b>	100	\$119.00	Complimentary parking, Complimentary Internet
<b>Executive Royal Inn West Edmonton</b>	100	\$129.00	Includes breakfast, complimentary Wi-Fi, complimentary parking
<b>Doubletree by Hilton West Edmonton</b>	150	\$139.00	Complimentary parking, breakfast included in rate, free Wi-Fi, Complimentary Shuttle to West Edmonton Mall, 1 in 50 complimentary rooms, 10,000 HHonors Points to event planner
<b>Hampton Inn &amp; Suites West Edmonton</b>	80	\$139.00	Breakfast included, parking included, free Wi-Fi, quad occupancy
<b>Holiday Inn Express &amp; Suites West Edmonton</b>	80	\$139.00	Breakfast included, parking included, free Wi-Fi
<b>Hilton Garden Inn</b>	50	\$134.00	
<b>Hyatt Place Edmonton West</b>	40	\$149.00	Breakfast included, rooms can accommodate up to 6 persons
<b>Marriott Resort at Edmonton River Cree</b>	100	\$159.00	Parking included in rate
<b>Staybridge Suites</b>	50	\$139.00	Complimentary Breakfast, Social evening receptions, free Wi-Fi
<b>Quality Inn West Edmonton</b>	75	\$110.00	Complimentary breakfast included, free parking, free Wi-Fi

\*Rates based on an escalator  
 All rates are quoted as non-commissionable

Please note the rate provided here is the rate that the majority of your room block has been quoted at.  
 Please review the hotel's individual proposal included in this document for additional room category rates.





# GETTING HERE

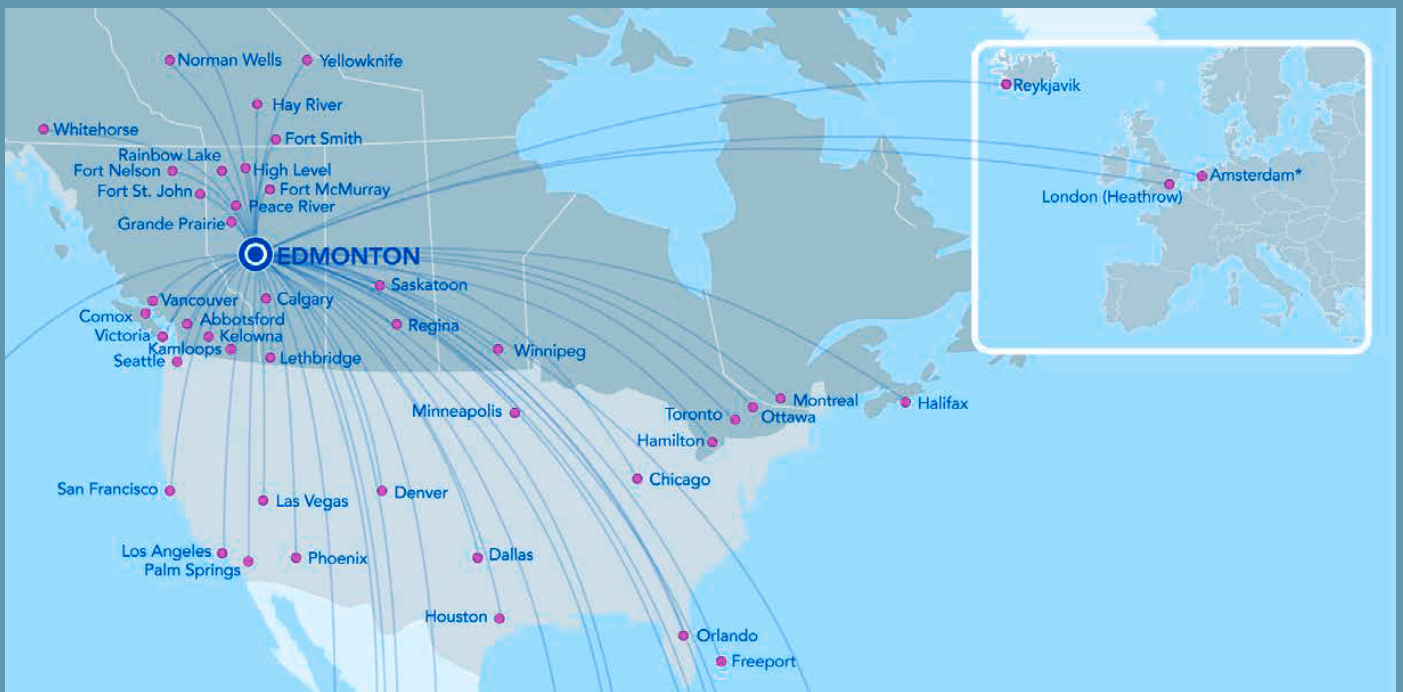
---

Getting to Edmonton is easier than ever with so many non-stop flights to and from the continually growing Edmonton International Airport. Keeping the title of Canada's fastest growing airport for the last 10 years, they're our ally in making sure your delegates have the air access needed to arrive smoothly.

**23**  
commercial  
airline partners

First airport  
terminal in Canada  
awarded LEED Gold  
certification

**55**  
direct flights





A modern conference center hallway with large windows overlooking a city and greenery. The hallway is brightly lit, and the windows provide a clear view of the outdoors. The text is overlaid on a yellow rectangular background.

# SITE VISITS

---

Dates, space, and rates. Check.

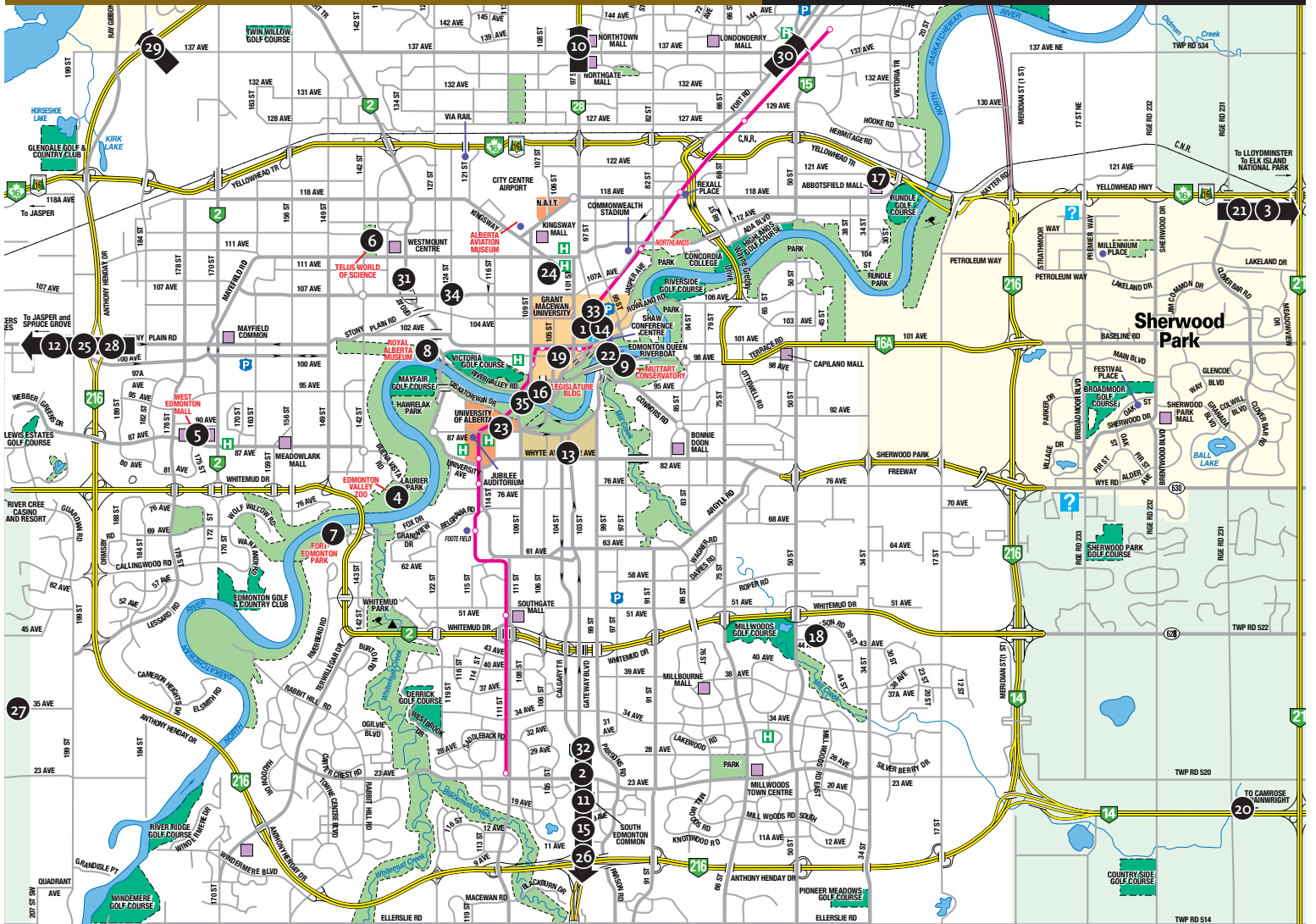
With the important details all summed up, it's time to bring that spreadsheet to life with a site visit! Tailored to the needs of your event, our one-on-one site means you can see behind the scenes on the spaces presented, meet the team who will bring it to life, and experience how Edmonton will WOW your delegates. Bring your questions... we're ready for you!



# MAPS

---

Edmontonians are known for being helpful, which is why we've included maps to help you find your way around the city. Interested in knowing the go-to coffee shops or distance to the next offsite? Our team can help tailor resources as unique as your event.

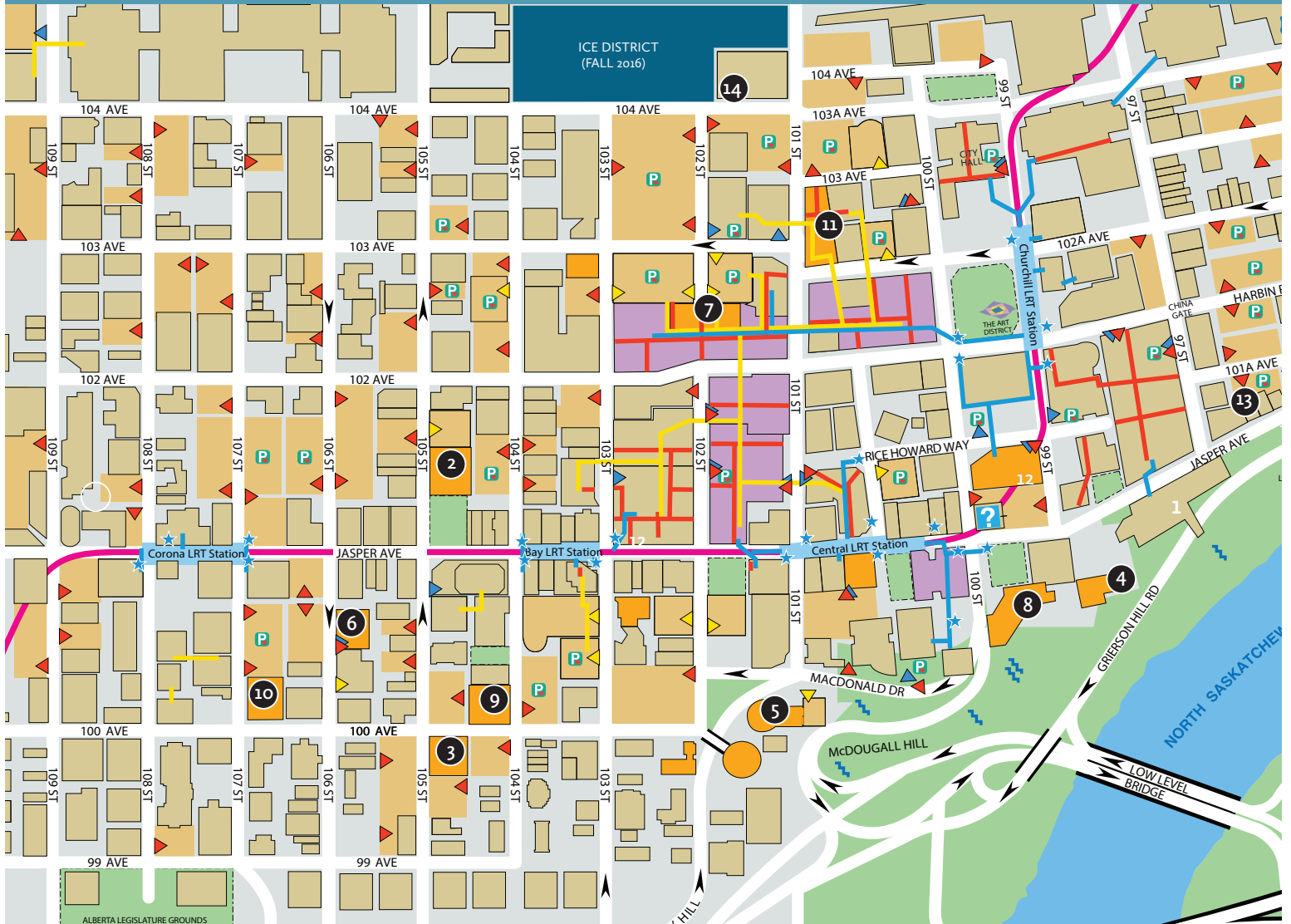


# Edmonton Attractions Map and Listing: Things to See and Do in Edmonton

## Location Key

1 Art Gallery of Alberta	2 Sir Winston Churchill Square	780.422.6223	19 Edmonton Public Schools Archives & Museum	10425 99 Avenue	780.422.1970
2 Devonian Botanic Garden	University of Alberta	780.987.3054	20 Kalyna Country - North East Central Alberta Tourism	Box 496	888.452.5962
3 Ukrainian Cultural Heritage Village	C/O 8820 112 Street	780.662.3640	21 Elk Island National Park of Canada	Site 4 RR1	780.992.2950
4 Edmonton Valley Zoo	13315 Buena Vista Road	780.496.8787	22 Edmonton Queen Riverboat	9734 98 Avenue	780.424.2628
5 West Edmonton Mall	1755 8882 170 Street	780.444.5200	23 Rutherford House Provincial Historic Site	11153 Saskatchewan Drive	780.427.3995
6 TELUS World of Science Edmonton	11211 142 Street	780.451.3344	24 Telephone Historical Centre	Prince of Wales Armouries Heritage Centre	780.433.1010
7 Fort Edmonton Park	PO Box 2359	780.496.8787	25 Multicultural Heritage Centre	5411 51 Street	780.963.2777
8 Royal Alberta Museum	12845 102 Avenue	780.453.9100	26 Reynolds Alberta Museum	2 km West of Wetaskiwin on Highway 13	780.361.1351
9 Muttart Conservatory	9626 96A Street	780.496.8787	27 Edmonton Corn Maze	1277 Potter Greens Drive	780.288.0208
10 Prairie Gardens & Greenhouses	PO Box 119 56307 Lily Lake Road	780.921.2272	28 Stony Plain & Parkland Pioneer Museum Society	5120 43 Avenue	780.963.1234
11 Leduc Number 1 Energy Discovery Centre	6 20 Haven Avenue	780.987.4323	29 Hole's Greenhouses & Gardens Ltd., The Enjoy Centre	101 Bellerose Drive	780.419.6800
12 Spruce Grove and District Agricultural Society (ERTG) Box 3012		780.960.4600	30 Jurassic Forest	Township Road 564	403.538.1706
13 Old Strathcona	10345 Whyte Avenue	780.437.4182	31 Edmonton Segway	10805 134 St	780.995.7347
14 Winspear Centre	9720-102 Ave	780.429.1992	32 Black Gold River Tours	18 Pembina Street	780.987.0410
15 Village at Pigeon Lake, The	6A Village Drive	780.586.2332	33 Citadel Theatre	9828 101A Ave	780.426.4811
16 Legislative Assembly of Alberta Visitor Services	Pedway Mall Government Centre	780.427.7362	34 124th St & Area	202 10715 124 St	780.413.6503
17 Alberta Railway Museum	24215 34 Street	780.472.6229	35 High Level Bridge Street Car	P.O. Box 76057, Southgate P.O.	780.437.7721
18 Alberta Prairie Railway Excursions	4611 47 Avenue	403.742.2811			





# Downtown Hotel Map

## Location Key

- 1 Shaw Conference Centre
- 2 Coast Edmonton Plaza
- 3 Comfort Inn and Suites
- 4 Courtyard by Marriott
- 5 Chateau Lacombe
- 6 Days Inn Downtown
- 7 Delta Centre Suite Hotel
- 8 Fairmont Hotel Macdonald
- 9 Holiday Inn Express
- 10 Matrix Hotel
- 11 Sutton Place Hotel
- 12 Westin Hotel
- 13 Hyatt Place Hotel
- 14 Ice District & JW Marriott

## Proximity to the Shaw Conference Centre

1.5 km - 14 min walk	9797 Jasper Avenue
1.7 km - 15 min walk	10155 - 105 Street
500 m - 2 min walk	10425 - 100 Avenue
1.2 km - 9 min walk	One Thornton Court, 99 Street & Jasper Avenue
1.2 km - 16 min walk	10111 Bellamy Hill
1.1 km - 13 min walk	10041 - 106 Street
650 m - 4 min walk	10222 - 102 Street
1.7 km - 14 min walk	10065 - 100 Street
1.8 km - 18 min walk	10010 - 104 Street
1.0 km - 11 min walk	10640 - 100 Avenue
700 m - 4 min walk	10235 - 101 Street
450 m - 5 min walk	10135 - 100 Street
1.3 km - 15 min walk	Opening Q3 2016
	Opening Q3 2018

**EDMONTON**  
*All in.*





# TRANSPORTATION

---

Getting around is easy when you think of all the options. Many of our hotels, venues, and world-famous markets are linked directly to Downtown's 40km indoor pedestrian network (Pedway). Plus, above and below ground Light Rail Transit (LRT), buses and taxis will take delegates throughout the city in all four seasons with ease.

When it comes to purchasing **Conventions Transit Passes** for your delegates, know that Edmonton Tourism is *All-In* to provide information and support in collaboration with the City of Edmonton.





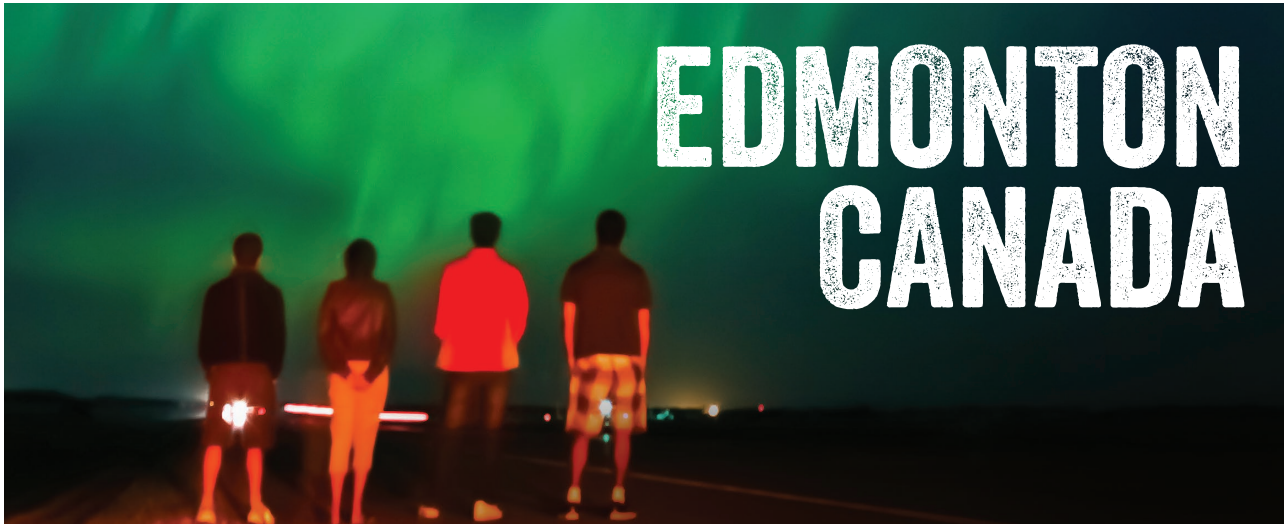
# EXPERIENCES

---

So, you're coming to Edmonton?

We're thrilled! Our team will be there every step of the way to make sure it's a success, including helping to find those Instagram-worthy experiences for your delegates to enjoy before or after the main event.





## Gateway to Canada's north and Rocky Mountains

0%

provincial sales tax

172 attractions

call Edmonton and area its home

It's only 3 hours to Jasper National Park

Alberta's capital is also Canada's fastest growing city, home to 1.1 million friendly residents

Edmonton is off the beaten track

### Fort Edmonton Park



Step back 150 years to the original Edmonton. Ride the hand-carved carousel horses at the midway, catch a Klondike melodrama and spend a night in the past at the luxurious Hotel Selkirk. Who knew a time without tech could be so... invigorating?

### Edmonton Arena District

Gather in the city's hub and heart, the stunning Edmonton Arena District. A vibrant public plaza, Rogers place — a state-of-the-art sports, entertainment and event venue — and a four star hotel with 362 guest rooms and suites, a 9,500-square-foot ballroom and 24,000 square feet of meeting and conference space make it a destination unlike any other in North America.

### West Edmonton Mall

We call it a "mall". What it is really is North America's Mt. Everest of shopping, indoor entertainment and attractions. 800 shops and services. The world's largest indoor wave pool. Penguins. A casino. Still not interested? Chew on this: a full-sized pirate ship. As a bonus, there is no provincial sales tax, just the federal five percent Goods and Services tax.



### Majestic Aurora

Let Edmonton be your gateway to the magic of the Aurora Borealis in the spectacular North. Spend memorable evenings under the mesmerizing Northern Lights in prime viewing spots where the colourful sky dance unfolds.

### Convention Spaces

Marvel at one of the best convention views in town at the Shaw Conference Centre, overlooking the beautiful North Saskatchewan River Valley, and able to accommodate events of any size or scope. The Edmonton Exposition and Conference Centre is a little bit of high-tech features with a lot of flexible, indoor space, with enough room to accommodate the biggest conferences and special events west of Toronto.

### River Valley Adventure Co.

What better way to explore North America's longest urban parkland than by Segway? Summer or winter, wind your way through our river valley trails, taking in the scenic landmarks and breathtaking vistas at a leisurely yet exhilarating 15 km/hr.





### *Why is Edmonton different?*

There are theories. Maybe it's our northern home, where for years we've learned to make our own fun. Perhaps it's our legacy of entrepreneurs dreaming up oddities: the continent's first, biggest and wildest Fringe theatre festival and a shopping mall that at one time had more submarines than the Canadian navy. Edmontonians have always been unusually keen to try, and build, something new.

We're a big city with small town values, a vibrant urban centre in the heart of wilderness. From close encounters with free roaming bison to surfing indoors to taking your taste buds on a journey to some of the hottest craft beer taprooms, hyper-local bistros and indie bakeries in Canada, you'll find there's a uniqueness to how Edmontonians do ordinary things. And we want you to be a part of it.

One thing's for sure, if you're looking for an unforgettable, original experience, you'll find it here. Peruse our list of activities and poke around ExploreEdmonton.com for all the proof you need.



Contact:

**Terri Nielsen**  
Business Development Manager

780.917.7621  
tnielsen@edmonton.com



# LET'S TALK

---

If you're looking for a memorable, original meeting or conference experience, you'll get it here. Because in Edmonton you'll find more than a meeting space, you'll discover the ally you need to make your next gathering succeed.

**TERRI NIELSEN**

Business Development Manager,  
Edmonton Tourism

**T** 780.917.7621

**C** 780.901.8957

**E** [TNIELSEN@EDMONTON.COM](mailto:TNIELSEN@EDMONTON.COM)

# APPENDIX

## Hotel Proposals



## PROPOSAL

09/30/2016

### JEHOVAH'S WITNESS 2017 REGIONAL CONFERENCE

Thank you for the opportunity to present the Best Western Plus Westwood Inn! This proposal is regarding your upcoming event scheduled 07/21/2017 - 07/23/2017.

The BEST WESTERN PLUS Westwood Inn is centrally located in the heart of Edmonton's bustling West End. Comfortable accommodations paired with the excitement of the city just outside this premium Edmonton Hotel create an unforgettable hotel experience.

Enjoy the comfort the Best Western Hotels are known for, and unwind at the BEST WESTERN PLUS Westwood Inn Edmonton in spacious accommodations and suites that offer cable television and complimentary high-speed Internet access. Enjoy the excitement of our Video Lottery Terminal System in our lounge. Splash around our saltwater swimming pool or work up a sweat in our exercise facility. Pets are also welcome for a small fee.

Business, meeting and event guests will also enjoy the hotel's professional staff, business center and 11,000 square feet of banquet space - perfect for weddings, galas, conferences and more. This hotel has undergone a major guest room and public area renovation completion date of spring 2016.

### HOTEL FEATURES & AMENITIES

Our hotel offers a comfortable setting for your attendees, such as:

- **Complimentary Parking**
- Fitness Center – new state of the art equipment
- 100% smoke free hotel
- Indoor Pool
- 11,000 sq. feet of flexible Meeting & Conference Space with natural lighting
- Onsite Business Centre
- **Complimentary High Speed Internet** in all Guest rooms and Meeting Space
- Monkey's Cage Cocktail Lounge open at 4pm daily
- Pets Allowed (in designated pet friendly rooms with small fee)
- Coffee makers and Mini Fridges in all guest rooms
- Guest Voice Mail

**GUEST ROOM BLOCK:**

Currently, we are able to accommodate the following requirements:

		07/21/2017	07/22/2017
ROOM TYPE	RATE	Friday	Saturday
Double Double*	\$119.00	30	30
Queen Queen Room*	\$119.00	70	70

The above rates are net, non-commissionable based upon Single or Double Occupancy and are subject to any and all applicable taxes. **Please note no group rooms are currently being held for Edmonton Tourism. Should you wish for the Best Western Plus Westwood Inn to place a tentative hold on these above guest room(s), please let us know by 10/14/2016 in order to secure your proposed group block.**

We invite you to come for a personal tour of our hotel to see firsthand all that we can offer for your event. If you have any questions or would like to set up a time to see our hotel, please contact me directly.

Warmest Regards,

---

Charlene Bablitz  
Director of Sales  
**Best Western Plus Westwood Inn**





# CAMPUS TOWER SUITE HOTEL

11145 87<sup>th</sup> Avenue, Edmonton, AB T6G 0Y1

t.780.439.6060

f.780.433.4410

campustower.com

---

## GROUP ACCOMMODATION PROPOSAL Jehovah's Witnesses - Watch Tower Convention 2017

---

Date: September 29, 2016  
Sales Manager: Laura Ternan  
Telephone Direct: 780-431-4554  
Facsimile Direct: 780-433-4410  
e-mail: l.ternan@coasthotels.com

### Jehovah's Witnesses Watch Tower Convention 2017

Thank you for considering the Campus Tower Suite Hotel for your event on behalf of Jehovah's Witnesses.

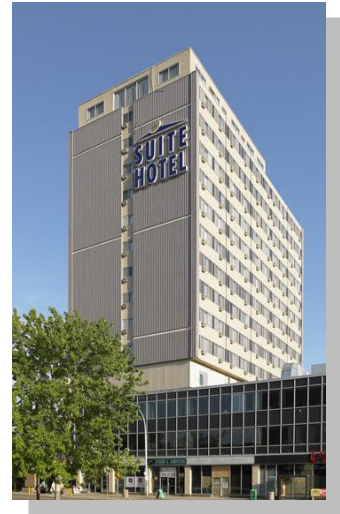
#### GENERAL INFORMATION:

Looking for the perfect home away from home? Campus Tower Suite Hotel provides 90 spacious, modern suites with full and limited kitchenettes, a dining area, private bedrooms, office desk and pull-out sofas.

Located on the University of Alberta Campus across the street from the University of Alberta Hospital, the Campus Tower Suite Hotel is within walking distance to all points on campus and the trendy shops and bistros of Whyte Avenue.

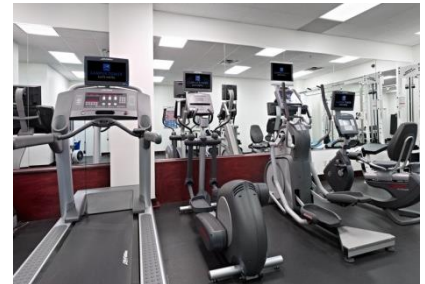


Ranging in size from 400 sq.ft. for studio suites to 525 sq.ft. for one bedroom suites and 720 sq.ft. for two bedrooms suites, the Campus Tower Suite Hotel offers ample room to move.



Our amenities including a full fitness facility to keep up with your routine, work stations and complimentary Wi-Fi to get your work done and dining areas with both full and limited kitchenettes with the convenience of several restaurants in the hotel tower, you'll feel right at home with us.

This combination of convenience, location, and residential style is what makes Campus Tower Suite Hotel the perfect place to stay.



**GROUP ACCOMMODATION PROPOSAL**  
**Jehovah's Witnesses - Watch Tower**

**GUEST ROOM ACCOMMODATIONS: July 19, 2017 - July 26, 2017**



Guest room rates are quoted in Canadian funds on a per night basis in single or double occupancy, are net, non commissionable and subject to taxes as indicated below. For additional adults in the room, please add \$15 per person, per night. Children under the age of 18 stay for free when sharing with adults. Negotiated room rates are available to your guests three days pre and post actual event dates (based on availability). Check in time is after 4:00 pm and check out time is before 11:00 am.

We currently have the following guest rooms available for your delegates:

**Sleeping Room Summary**

	Jul 20	Jul 21	Jul 22
Premium Suite Queen Full Kitchen	56	56	56

\* Rooms will be available at the group rate two days pre and two days post convention.

**Guest Room Rates**

Room	Single Rate	Double Rate	Triple Rate	Quad Rate
Premium Jr Suite Queen Full Kitchen	\$129	\$129	\$129	\$129
Premium Suite Queen Full Kitchen	\$129	\$129	\$129	\$129
Premium 2BrSte 2 Queens Full Kitchen	\$179	\$179	\$179	\$179

**VALUE ADDS & INCENTIVES:**

- **Reduced Parking Rate of \$10.00 per vehical, per day (reduced from \$17.00 per vehical, per day**
- **Complimentary Wifi throughout the hotel and all public spaces**
- **Planner Points Program is not in affect**
- **Hotel is willing to work with the Event Planner Rooming Contract**
- **Group rates are available two days pre and two days post convention dates (Based on Availability at time of Reservation)**

**TAXES & FEES:**

The following taxes and fees apply, and are subject to change without notice:

<b>Guest Room Accommodations: 12.27%</b>
Tourism Levy: 4%
Destination Marketing Fee (DMF): 3%
Goods & Services Tax (GST): 5%

Tax exempt establishments must provide the appropriate documentation to the Hotel together with the signed contract or are subject to paying the taxes. Goods & Services Tax (GST) also applies to Destination Marketing Fee (DMF). Tourism Levy applies to the Destination Marketing Fee (DMF).

Please note, the hotel is currently not holding any of the above mentioned space. If you wish to confirm your event or would like to arrange a tour of the hotel, please feel free to contact me.

The Campus Tower Suite Hotel looks forward to hosting your event!



---

**GROUP ACCOMMODATION PROPOSAL**  
**Jehovah's Witnesses - Watch Tower**

---

Sincerely,  
The Campus Tower Suite Hotel

*Laura Ternan*

---

Laura Ternan, Sales Manager  
Telephone Direct: 780-431-4554  
Facsimile Direct: 780-433-4410  
Email: l.ternan@coasthotels.com



**CHATEAU  
LACOMBE**  
HOTEL

September 26, 2016

Watchtower, Bible and Tract Society of Canada  
6149 157A Avenue  
Edmonton, Alberta, T5Y 2P6

Thank you for considering the **Chateau Lacombe Hotel** for your event accommodation requirements. We look forward to the opportunity of welcoming you and your attendees during the Jehovah's Witnesses' 2017 Regional Convention.

The guest rooms required for this event match perfectly with our availability over your preferred dates.

**Room Block**

<b>ARRIVAL</b>		<b>DEPARTURE</b>			
Thursday, July 20, 2017		Monday, July 24, 2017			
<b>ROOM TYPE</b>					
	Thu 07/20	Fri 07/21	Sat 07/22		
Standard King	80	80	80		
Standard Double	80	80	80		
Concierge King	40	40	40		
<b>Total Rooms</b>	<b>200</b>	<b>200</b>	<b>200</b>		
<b>RATES – Including Self-Parking</b>					
	Single	Double	Triple	Quad	
Standard King	119.00	119.00	129.00	139.00	
Standard Double	119.00	119.00	129.00	139.00	
Concierge King	149.00	149.00	-	-	
<b>RATES – Including Self-Parking &amp; Breakfast</b>					
	Single	Double	Triple	Quad	
Standard King	129.00	139.00	149.00	159.00	
Standard Double	129.00	139.00	149.00	159.00	

**Total Room Nights: 600**

These rates are net of taxes. Hotel's room rates are subject to applicable provincial and local taxes (currently 9%) in effect at the time of check-in. Room rates are also subject to the Destination Marketing Fee of 3%.

**Additional Room Types Available**

<b>Room</b>	<b>Rate</b>
Jr. Suite	<b>169.00</b>
Executive Suite	<b>269.00</b>
Royal Parlour and Suite	<b>749.00</b>

### Concierge Guest Rooms:

Enjoy our Concierge Guestrooms that offer a higher form of business travel service by including the following amenities:

- Private and exclusive concierge lounge: Open 7 days a week
- Daily deluxe continental breakfast 6:30am to 11:00am
- Daily complimentary canapés, cocktails, and beverages 5:00pm to 8:00pm
- Telus Optic TV with 15 mb dedicated internet access per room. On demand movies online with credit card. HDMI and a USB Port
- Hair dryer and robe(s)
- 42 inch LED HD TV
- Personal Keurig coffee machine
- Bedside docking station
- Mother Earth Essentials: upgraded amenities (including mouthwash, shower gel and vanity kit)



### Concessions (based on 85% guestroom pickup)

- 2 Complimentary Executive Suite Upgrades at Standard rate.
- 2 Complimentary Jr. Suite Upgrades at Standard rate.
- 6 Complimentary Concierge King Upgrades at Standard rate.

### Other Information

- 2 Rates Offered – will give option to guests making accommodations.
- 1 in 40 Complimentary Rooms Ratio – Cumulative
- Complimentary WiFi in all Guestrooms, Meeting Space and Public Areas.
- Extended Rates: 3 days pre and post
- Underground Parking Garage with over 600 stalls
- This proposal is currently on first option basis until **November 30, 2016**

We appreciated your interest in the Chateau Lacombe Hotel. If there is anything we can do to influence the decision in our favour we would welcome the opportunity to discuss further.

Have a Memorable Day,  
Veronica Abbott

Veronica Abbott | Sales Manager  
Chateau Lacombe Hotel | 10111 Bellamy Hill, Edmonton, AB T5J 1N7  
Direct Line: **(780) 420-8395**  
Direct Fax: (780) 420-8379  
**vabbott@chateaulacombe.com**

### **About our Hotel**

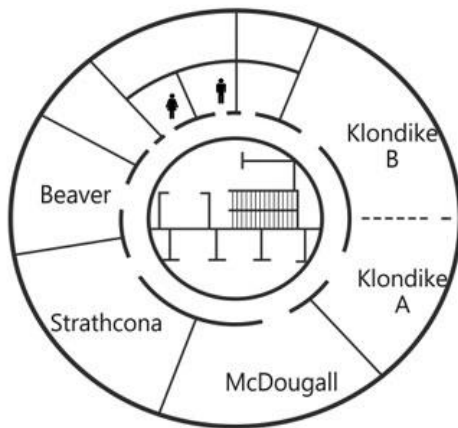
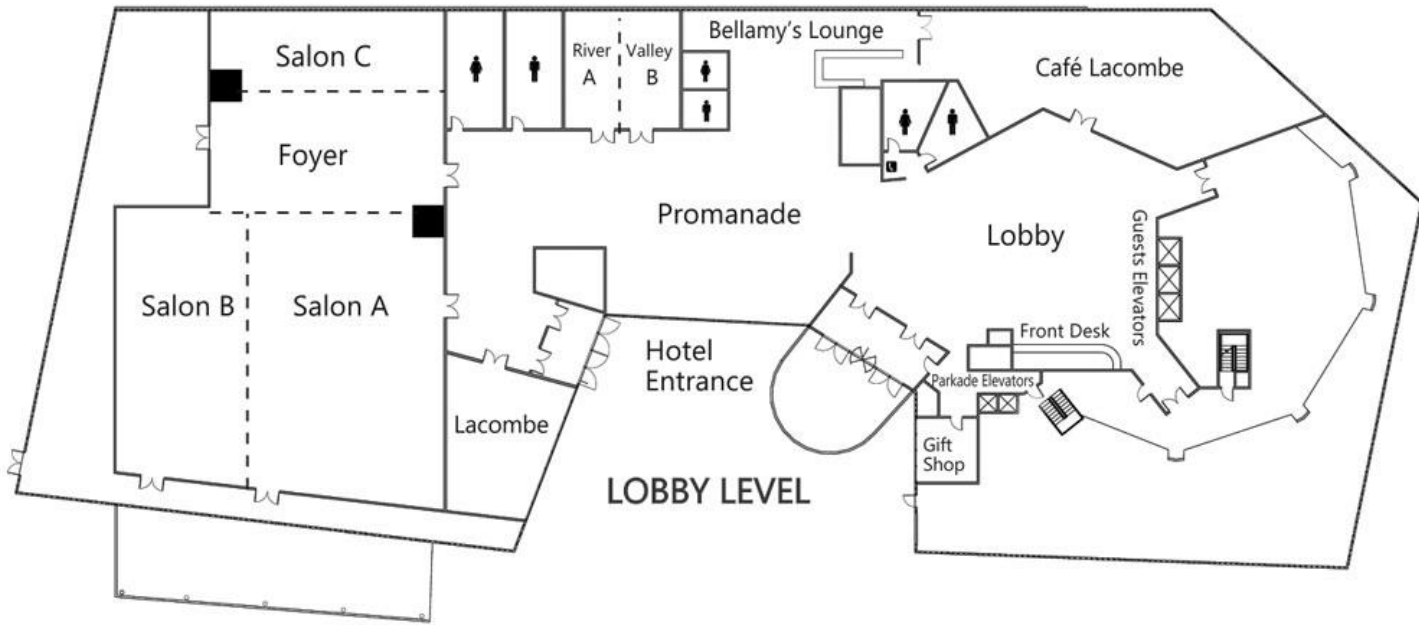
Located in the heart of downtown Edmonton, the **Chateau Lacombe Hotel** is an iconic landmark, offering spectacular panoramic views of the North Saskatchewan River valley.

The hotel is located by the Edmonton Arts District, City Centre, and numerous avenues of entertainment. A quick convenient walk to the Shaw Conference Centre, makes us your ideal choice.

### **Hotel Highlights**

- Stunning River Valley views
- 307 guest rooms, including 15 Jr. Suites, 66 Concierge Level rooms and Executive Suites, with River Valley views and private balconies.
- Legendary roof-top revolving restaurant, LaRonde, offering exceptional cuisine for dinner and Sunday Brunch.
- Complimentary Business and Fitness Centre(s)
- 14,000 square feet of flexible meeting space

### Hotel Meeting Space Map



THIRD FLOOR

## MEETINGS & SPECIAL EVENTS

Offering 14,000 square feet of meeting and banquet space and home to the second largest ballroom in downtown Edmonton, our facilities offer options for every occasion. Whether you need a beautiful location for your special day, or a relaxed, upscale environment for your next meeting or presentation, we have the room for you. For a memorable and successful meeting or event, at the Chateau Lacombe, our main focus is you.

LOBBY LEVEL	Dimensions	Square Feet	Ceiling Ht.	Classroom	Theatre	U-Shape / Hollow Sq.	Boardroom	Reception	Banquet	Dance Floor
Alberta Ballroom Salons A, B, C & Foyer	-----	8786	14	570	1000	n/a	n/a	1000	550	33 x 42
Salons A & B	79 x 74	5846	14	340	700	n/a	n/a	760	340	33 x 42
Salon A	49 x 74	3626	14	215	500	110	80	450	250	33 x 31
Salon B	29 x 74	2146	14	135	280	100	65	270	150	n/a
Salon C	19 x 60	1140	9	60	100	45	32	120	60	n/a
Foyer	30 x 60	1800	9	100	200	45	40	200	n/a	n/a
Salon C & Foyer	60 x 44	2940	9	125	300	n/a	n/a	330	175	n/a
Lacombe	19 x 60	1140	9	50	100	45	40	120	64	n/a
River Valley A & B	30 x 30	900	9	32	60	25	24	80	40	n/a
River Valley A	15 x 30	450	9	18	30	n/a	12	45	20	n/a
River Valley B	15 x 30	450	9	18	30	n/a	12	45	20	n/a
THIRD FLOOR										
Klondike A & B	22 x 73	1560	9	70	100	48	44	180	100	12 x 16
Klondike A	22 x 36	780	9	32	50	24	22	85	40	n/a
Klondike B	22 x 36	780	9	32	50	24	22	85	40	n/a
McDougall	22 x 36	780	9	32	50	24	22	85	40	n/a
Strathcona	22 x 36	780	9	32	50	24	22	85	40	n/a
Beaver	22 x 23	520	9	n/a	n/a	n/a	10	n/a	n/a	n/a
Boardroom (4th Floor)	14 x 14	196	9	n/a	n/a	n/a	8	n/a	n/a	n/a





ncial



COURTYARD





Jehovah's Witnesses' 2017 Regional Convention  
 Whatch Tower, Bible and Tract Society of Canada  
 6149 – 157A Avenue  
 Edmonton Alberta, T5Y 2P6

**To the Local Chapter of Jehovah’s Witnesses**

Thank you for considering the Courtyard by Marriott Edmonton Downtown as a host hotel for the Jehovah's Witnesses' 2017 Regional Convention, I am pleased to send you our proposal.

I welcome the opportunity for you and your delegates to experience the new state-of-the-art lobby at the Courtyard by Marriott Edmonton Downtown, Edmonton's foremost business-class hotel, specializing in casual riverside luxury. Our hotel features 177 tastefully appointed, newly renovated guestrooms with free Wi-Fi and a mini-fridge for your convenience. Panoramic views of the river valley and our downtown business district add to the excitement of this magnificent Edmonton hotel. Our award winning patio provides a relaxing atmosphere with breath taking views of Edmonton’s river valley. An excellent choice among Edmonton restaurants, our Riverside Bistro serves delicious breakfast, lunch and dinner.

Our Meeting Rooms offer a spectacular view of the river valley with floor-to-ceiling windows. Facilitating groups of 2 - 120 people, our Meeting Rooms are designed to ensure that every need is met. This Edmonton hotel is conveniently located next to Shaw Conference Centre and other Edmonton attractions. Among Edmonton hotels and meeting facilities the newly renovated Courtyard by Marriott Edmonton Downtown stands above the rest!

Below is the room block and rates we would extend to your event for the indicated dates:

	Thur07/20	Fri 07/21	Sat07/22
Queen Double Standard	40	40	40
General King	20	20	20
River View two Queen Beds	30	30	30

Room	Single Rate no Breakfast	With Breakfast Included For Two Adults
Queen Double Standard	\$119.00	\$139.00
General King	\$119.00	\$139.00
River View two Queen Beds	\$129.00	\$139.00

The above mentioned rates are based in the current year (2016). Please note the breakfast is \$10.00 per adult in the room per day. The rate is none commissionable.

### **PARKING FEES**

Please be advised vehicles with a six foot clearance will incur a valet parking charge of \$25.00 per day. All propane vehicles and vehicles with a clearance greater than six feet will incur a parking charge of \$25.00 per day. These rates do not include tax and are subject to change. Heated Underground Valet Parking

### **Function Information Agenda**

We are not currently holding any meeting space or guestrooms for your event. If this proposal meets with your approval, and you would like to confirm acceptance of this offer, please contact me and I will forward a formal agreement to you.

Sincerely,

Faith Boka Gwinji  
Senior Sales Manager  
Courtyard by Marriott Edmonton  
99th & Jasper Ave, Edmonton AB, T5J 2E7  
Direct Line: 780.945.4732/ 4746  
Facsimile: 780.945.4731

Email: Faith [BokaGwinji@concordhotels.com](mailto:BokaGwinji@concordhotels.com) or [santosh.padukone@concordhotels.com](mailto:santosh.padukone@concordhotels.com)

### **Courtyard by Marriott Edmonton Features:**

- Convenient downtown location, within walking distance of:
  - Edmonton City Centre Mall and Movie Theatres
  - River Valley trail system for walking, jogging or biking
  - LRT (Subway) System, connecting you to Commonwealth Stadium and Edmonton's all purpose sports and events arena, Rexall Place
  - The Citadel Theatre
  - Winspear Centre
  - Canada Place Federal Government Building
- ¼ of a block from the SHAW Conference Centre.
- The Courtyard by Marriott finished a 100% renovation in March 2012 with all Guest rooms, Meeting rooms and public areas being done. Guest rooms include mini fridges, 32" Flat screen T.V.s, On-Command Movies, iron and ironing board, complimentary coffee & tea.
- 24-hour Fitness Centre
- Heated Underground Valet Parking
- 24-hour Business Centre with complimentary High-Speed Internet
- Full Service breakfast, lunch and dinner is served in the hotel's restaurant, the Riverside Bistro with views of Edmonton's spectacular River Valley
- The Riverside Bistro's award winning patio has an unobstructed view of Edmonton's River Valley

<http://www.marriott.com/hotels/travel/yegcy-courtyard-edmonton-downtown/>

<http://courtyard.marriott.com/tour/bistro>



DELTA EDMONTON SOUTH  
HOTEL & CONFERENCE CENTRE  
PROPOSAL FOR

**Watch Tower, Bible and Tract Society of Canada**

Jehovah's Witnesses' 2017 Regional Convention

July 20<sup>th</sup> – 22<sup>nd</sup>, 2017



October 3, 2016



**RE: Jehovah's Witnesses' 2017 Regional Convention**

To: Watch Tower, Bible and Tract Society of Canada

Thank you for your interest in the Delta Edmonton South Hotel for the Jehovah's Witnesses' 2017 Regional Convention in July 2016.

We are very pleased with the opportunity to present our proposal outlining all appropriate space for the conference, as well as the accommodation requirements. Should this meet with your approval, a formal agreement will be forwarded for your signature.

Delta Edmonton South Hotel offers quick and easy access to shopping complexes like Southgate Shopping Centre & the world famous West Edmonton Mall, the nightlife of Whyte Avenue, the downtown business district, and less than 20 minutes away from Edmonton International Airport. At Delta Edmonton South Hotel, attentive service and elegant surroundings await your visit.

From our executive-appointed boardroom to one of Edmonton's largest pillar-free ballrooms, (13,000 sq. ft.), meeting and convention facilities at the Delta Edmonton South Hotel are complete and convenient. With over 30,000 sq. ft. of meeting space, most featuring natural light, this facility provides spectacular views of the city and the opportunity for you to impress with a most memorable event.

We look forward to welcoming the Jehovah's Witnesses' 2017 Regional Convention and to working with you to ensure the success of your event. If your schedule permits, it would be my pleasure to tour you through the hotel so you can explore how the event would be showcased at the Delta Edmonton South.

Sincerely,

*Elizabeth Nash*

Affinity Sales Manager  
Tel: 780.431.3433  
E-mail: [elizabeth.nash@deltahotels.com](mailto:elizabeth.nash@deltahotels.com)



## WE ARE ALL GUESTS OF THE ENVIRONMENT



Delta Greens

We hesitate to call Delta Greens a program. It's more of a promise that we are making to this land, to the air we breathe, to ourselves and to you. A promise to reduce the waste we create, the energy we use. It's a promise with a plan that utilizes the energy and creativity of Delta employees, as you'll notice on your next visit to a Delta hotel.

On our side, we're replacing all of our lighting, plumbing and other fixtures with energy-efficient products. All of our renovations and new hotels will be completed to the highest of green standards. We've phased out plastic water bottles from our guest rooms. We're eliminating paper guest receipts. We're enforcing new green building standards. We're turning on our switch-off program. We're into equipment retrofits. We're recycling like never before.

Delta Greens is not just an environmental program or a one-time initiative. It's an integral part of who we are and the way we approach our business. We know that you always have a choice in the hotel you select. If you want to stay green, be our guest. To learn more and to track our progress along the way, we welcome you to visit [www.deltahotels.com/greens](http://www.deltahotels.com/greens)

Delta is also pleased that it has been named as one of the 30 greenest organizations in Canada by AON Hewitt for the second year in a row. Delta Edmonton South has been awarded 4 Green Keys from the Hotel Association of Canada.

## GET MORE DONE ON THE ROAD THAN YOU DO BACK HOME

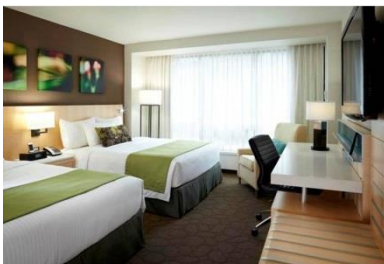
In today's wired world, perhaps nothing is more important than fast, reliable internet connectivity, both for presenters and attendees. That's why, at most of its premier meeting and conference facilities, Delta has upgraded its entire internet infrastructure to the industry-leading standards required by today's business environment. Introducing Internet XL, Delta's all new premium ultra-fast Internet service. It's up to 20 times faster than household high-speed internet service, and proven to be the fastest of any full-service hotel chain in Canada.



## RECENT RENOVATIONS

The Delta Edmonton South has recently undergone some exciting renovations and enhancements. We are pleased to showcase below what has been done.

- ✓ **Hotel lobby**
- ✓ **Aurora Lounge**
- ✓ **Pool**
- ✓ **44o4 Restaurant**
- ✓ **Starbucks Barista**
- ✓ **Crystal Gallery**
- ✓ **Top of The Inn**
- ✓ **Conference Centre**
- ✓ **Public Rest Rooms**
- ✓ **Guestrooms**



## **GUEST ROOMS & ROOM RATES**

We are pleased to confirm the following guestroom rates for Jehovah's Witnesses' 2017 Regional Convention as outlined:

Date	Day	Guest Room; 2 beds	Total Rooms
07/20/2017	Thur	50	50
07/21/2017	Fri	50	50
07/22/2017	Sat	50	50

Start Date	End Date	Room Type	Single/Double	Triple	Quad
07/20/2017	07/23/2017	Guest Room; 2 beds	\$105.00	\$115.00	\$125.00

**Total Number of Rooms Requested: 150**

Currently room rates are subject to 12% taxes.

The breakdown is as follows: GST 5%, Alberta Tourism Levy 4%, and Destination Marketing Fee 3%.

*Please note that the above taxes may change without notice.*

## **IN ADDITION**

We are pleased to provide:

- Complimentary parking for all conference attendees, including underground for overnight guests
- Complimentary High Speed Wireless Internet in all guest rooms, meeting space and public areas
- Bed & breakfast rate starting at \$125.00

## **OUR GUESTROOMS**

The Hotel's 237 guestrooms range from bright, welcoming bedrooms, to elegant suites, and spacious long-stay rooms equipped with a refrigerator and microwave.

All rooms include the following standard amenities:

- Delta's Sanctuary bed with crisp white linens and brightly coloured accents
- Air-conditioning & Open Air Access Windows
- Philosophy Amenities
- Coffee maker, Hairdryer, Iron/Ironing Board
- All guestrooms are 100% non-smoking.
- High-Speed XL Internet Access is complimentary in all guestrooms
- Bedside docking station for iPhone, USB and BlackBerry
- Great Shelf with Accessory Tray
- Large SmartDesk™ surface area (6 ft.) with built-in power and connectivity dock, 4 power outlets
- Large-screen HD TV; input audio, video or data from your device to the flatscreen TV

## **PARKING**

We offer access to over 500 complimentary parking stalls on property including an underground, heated garage, a 3 level covered parkade and a large number of ground level exterior stalls

## **TRANSPORTATION**

Sky Shuttle to/from Edmonton International Airport at \$18 each way, and \$30 for a round trip. Children 4 - 11 are \$10.00 one way, and \$17.00 round trip. [www.edmontonskyshuttle.com](http://www.edmontonskyshuttle.com)

**Sky Shuttle now offers Complimentary Service to West Edmonton Mall!**

- 7 days a week
  - Picking up from our hotel at 9:45am
  - Leaving West Edmonton Mall at 5:00pm
    - Advance reservations required



## MARRIOTT REWARDS POINTS

Marriott Rewards® offers exclusive membership privileges when you travel, as well as your choice of frequent flyer miles in your preferred airline program or points toward free vacations for every dollar you spend at over 2,400 hotels in the Marriott family. Sign Up Today! [www.marriott.com](http://www.marriott.com)

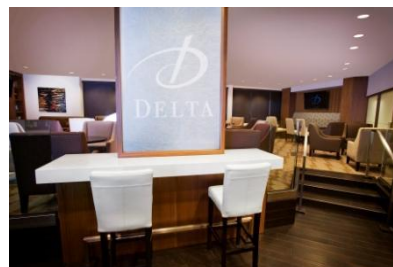
## OUR RESTAURANT & LOUNGES

Delta Edmonton South Hotel has a new 4404 Restaurant and Aurora Lounge to accommodate a social chat over a beverage or business meeting over a meal.

**4404 Restaurant:** Join us for comfortable dining in a contemporary setting that features artwork by a local photographer and glass artist. Open daily from 6 AM, featuring full breakfast, and a unique selection of lunch items to fit within your busy day. Evenings transition to a more intimate setting with several quiet and semi-private dining areas. For patrons with special dining requirements our chef has created gluten-free and vegetarian menus, and if you can't find something exactly to your taste, remember "Our Kitchen is Your Kitchen" at Delta Edmonton South so just ask your server if you would like a dish prepared especially for you. For families, children six and under eat free and ask about our senior's discount!



**Aurora Lounge:** Come unwind in the inviting atmosphere of our newly created Aurora Lounge. Andy and the team will welcome you to relax and enjoy the game on one of our 4 flat screen TVs or mingle with friends and colleagues at the end of the day. Indulge in a fine selection of quality scotches, beer on tap or premium spirits such as Grey Goose Vodka, Bombay Gin or Crown Royal Rye, and partake of a magnificent a la carte menu. Open Monday to Friday at 4pm, Saturday at 3pm and Sunday at 5pm, or inquire about booking Aurora for a private event!



**In-Room Dining:** Enjoy the convenience and taste of our In-Room Dining service 24 hours of the day where it is our pleasure to serve you the best of our cuisine in the comfort of your room. Whether it is a formal dining experience or just a snack to relax with by the television, we will deliver it at your request.

## OTHER DELTA EDMONTON SOUTH HOTEL SERVICES

**Health Club:** After a long day, our newly renovated health club, including an indoor pool, whirlpool and exercise room will help put the spring back in your step. This facility is available to registered guests at no charge. Equipment includes: free weights, stationary bikes, treadmills, and a work-out machine.



**Business Centre:** Our centre has 24 hour access and is located on main floor. To ensure the utmost safety, the centre has restricted/security access. The centre offers personal computers, printer and fax machine/photocopier for guest use.

## Services

Bell Staff - Full Bell Staff services are available at the hotel

Luggage storage - Complimentary to hotel guests

Concierge - Concierge services available in the Lobby

Housekeeping – Service available 24 hours, feather pillows, extra blankets or towels

Laundry Services - Same-day dry cleaning service available

Parking – Complimentary above-ground, heated underground, and multi-level parking at the hotel

Safety-Deposit Boxes - Safe-deposit boxes available at Front Desk at no extra charge (24hr access)

## AWARDS AREN'T EVERYTHING. LIVING UP TO THEM IS.

We're honoured to receive these awards. But more than that, we feel an even greater responsibility to surpass these achievements. Which is why we're working extra hard to make your stay as enjoyable as possible. So please, enjoy your stay



## AROUND EDMONTON

**Edmonton City Guide Information** – Edmonton has a vibrant history alive with stories of the fur-trade, agriculture, and the discovery of oil. Friends and strangers have come to explore its pioneering traditions. They have come to work, to wander among the historical sights, to enjoy the many summer festivals, and to sample fine prairie cuisine. Complete information at [www.edmonton.com](http://www.edmonton.com)

**Fort Edmonton Park** – It's living history at its best. Join the costumed historical interpreters and try your hand at living life as an early pioneer. You'll experience life as it was at the 1846 fort and on the streets of 1885, 1905 and 1920. Rides on the steam train, the street car, and the antique vehicles are all included in the admission price. More details from (780) 496-8787. [www.fortedmontonpark.ca](http://www.fortedmontonpark.ca)

**Old Strathcona** – Edmonton's Old Strathcona historic district offers many restaurants, pubs, and boutique shops. With the liveliest nightlife in the city, it pulses with hot music, smells of great food, and parties well into the night. [www.oldstrathcona.ca](http://www.oldstrathcona.ca)

**Rexall Place & Expo Centre** – A quick 15-minute drive along 75<sup>th</sup> Street will take you to the home of the famous Edmonton Oilers, the stomping grounds of our local Exhibition, Capital Ex, as well as many concerts and premiere events year-round.

**Edmonton Arts District** – Located on 99<sup>th</sup> Street between Jasper Avenue and 103<sup>rd</sup> Avenue. Tel: 780-424-9001.

**Muttart Conservatory** – Nestled in the scenic North Saskatchewan River Valley, the pyramids of the Muttart Conservatory are a striking landmark in Edmonton. Within the four pyramids visitors can explore an exotic jungle, trek across a desert oasis, enjoy the changing seasons in a temperate forest and bask in the magnificent colours of a floral paradise. [www.muttartconservatory.ca](http://www.muttartconservatory.ca)

**Telus World of Science** - Just a fifteen minute drive away Telus World of Science boasts Canada's largest planetarium dome theatre as well as Exhibit galleries, hands on activities and more. [www.edmontonscience.com](http://www.edmontonscience.com)

**West Edmonton Mall** – A brief drive along the Whitemud Freeway brings you to the world's largest shopping centre. With over 800 shops, an indoor waterpark with wavepool, a complete amusement park, restaurants, pubs, clubs and cafés, all under a single roof, you will easily spend an entire day at this spectacular mall. [www.wem.ca](http://www.wem.ca)

### Shopping

- Southgate Shopping Centre
- South Edmonton Common
- Whyte Avenue
- West Edmonton Mall
- Kingsway Garden Mall
- Edmonton City Centre

### Golf Courses

- Highlands Golf Club, Tel: 780-474-4211
- Broadmoor Public Golf Course, Tel: 780-467-7373
- Lewis Estates Golf Course, Tel: 780-489-4653
- Millwoods Golf Course, Tel: 780-448-1601
- Pioneer Meadows Golf Course, Tel: 780-988-8375
- The Ranch Golf & Country Club, Tel: 780-470-4700
- Victoria Golf Course Tel: 780-496-4710

### Skiing

- Rabbit Hill, Tel: 780-955-2440
- Snow Valley, Tel: 780-434-3991





**DELTA EDMONTON CENTRE SUITE HOTEL PROPOSAL**

**TO**

**Watch Tower, Bible and Tract Society of Canada**

We are excited about the opportunity to host the **Jehovah’s Witnesses’ 2017 Regional Convention** meeting. Our staff looks forward to introducing you to a brand of hospitality, upon which we have built our reputation for excellence.

After reviewing all of your program requirements we are confident that we can exceed all of your expectations. Based on our discussion your major objectives are:

You and your guests will feel confident in knowing that the staff at the Delta Edmonton Centre Suite Hotel is committed to providing a flawless event for you. This commitment extends from our Guest Service Associates, who first greets your guests, to our General Manager, Sean Palmer.

Currently we can offer the following group room availability:

**Attendees**

<b>Date</b>	<b>Day</b>	<b>Standard Delta Room 2 Queen Beds</b>	<b>Total Rooms</b>
07/20/2017	Thu	50	50
07/21/2017	Fri	50	50
07/22/2017	Sat	50	50

Delta Hotels Edmonton Centre Suites is pleased to offer the following group room rates:

<b>Start Date</b>	<b>End Date</b>	<b>Room Type</b>	<b>Single</b>
07/20/2017	07/22/2017	Standard Delta Room 2 Queen Beds	\$109.00

The above rates are quoted in current year dollars. These rates are net of taxes and non-commissionable. Hotel room rates are subject to applicable state and local taxes (currently 12%) in effect at the time of check in.

**OVERNIGHT ROOM RATES**

- Please note: Sleeping rooms are per room, per night and are based on single or double occupancy.
- Room rates are inclusive of high-speed wireless internet access in all guestrooms (100 Mbps)
- Complimentary upgrade into One Bedroom Suite for all guests.

## OPTIONAL MARRIOTT REWARDS POINTS

Marriott Rewards® offers exclusive membership privileges when you travel, as well as your choice of frequent flyer miles in your preferred airline program or points toward free vacations for every dollar you spend at over 2,400 hotels in the Marriott family. Sign Up Today! [www.marriott.com](http://www.marriott.com)

## OUR GUESTROOMS

The Hotel's 169 Guest Rooms include oversized Delta rooms, spacious one-bedroom suites and luxurious specialty Jacuzzi suites.

All rooms included the following standard amenities:

- Complimentary high-speed internet in all guestrooms
- 32" flat screen TV's in all One Bedroom Suites.
- 27" remote controlled color digital televisions with in-room movies, digital music &
- In-room coffee makers, iron/ironing boards

## ONE BEDROOM SUITE

Our 104 one-bedroom suites are 500 – 625 square feet complete with living room and separate bedroom. These rooms offer one king bed, one queen bed in the bedroom and a double pillow-top pullout in the living room.

## PARKING

Adjacent parking is available at Edmonton City Centre West Parkade.

- Overnight Rate: \$29.00
- Valet Parking: \$40.00

## DINING Cocoa's Restaurant & Lounge

Award winning Cocoa's appeals to all with its intimate airy location features a continental cuisine, regional specialties and famous Sunday Brunch. Open daily for lunch, dinner and evening snacks, the Lounge features a brand new 42" Flat Screen Television, a tempting menu and overlooks the dynamic Edmonton City Centre Mall.

**In-Room Dining** For those who prefer the comfort of in-room dining, this service is available from 5:30am – 11:00 pm daily.

## OTHER DELTA EDMONTON CENTRE SUITE HOTEL SERVICES

### Fitness Centre

After a long day, our newly equipped health club, including a whirlpool, steam room, and exercise room will help put the spring back in your step. Facility is available to registered guests at no charge. Exercise equipment includes treadmills, lifecycles, weight machine and free weights

### Business Centre

Located on the lobby level, complete with 2 workstations, laser printer, photocopier, and high speed internet. Access the facility 24 hours a day with your guestroom key.

### Services

- Valet and covered parking available seven days a week. We would be pleased to add parking charges to the master account for billing purposes, and passes can be given upon check-in.
- Dry Cleaning and valet service available Monday through Friday. Guaranteed same day service of items received prior to 8:00 am.
- Washing machine and clothes dryer are available to in-house guests free of charge
- Toll free reservations directed to our hotel at 1-800-661-6655

Thank you again for your consideration of our hotel and I hope we have the opportunity to work with you and on this program. Please do not hesitate to call me at 780-423-9659 or email [joanne.ralph@deltahotels.com](mailto:joanne.ralph@deltahotels.com) if you have any questions on the information outlined in this proposal.

Best Regards,

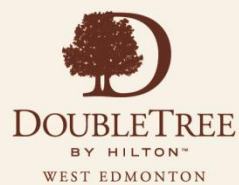
Joanne Ralph, Conference Services Manager  
Delta Edmonton Centre Suite Hotel  
10222 102 Street, Edmonton, Alberta T5J 4C5



*A Warm Welcome*

## Jehovah's Witness 2017 Regional Conference

### Accommodations Proposal







*Where the little things mean everything.™*

## We put back some of what travel takes out

At DoubleTree by Hilton™ West Edmonton we put the human touch back into your travel experience. It all starts with the warm welcome of a chocolate chip cookie at check-in. Then the caring keeps coming with everything from the luxurious comfort of our premium sleep experience, to our highly-trained staff members who are dedicated to anticipating your needs so your stay is the best it can be.

## What our guests can expect

As guests of our newly revitalized hotel, you will enjoy:

- A Brand New Hotel with 238 Luxuriously Furnished Guestrooms
- Dramatic new lobby with personalized check-in counters along with the signature DoubleTree cookie welcome
- Complimentary surface parking
- Complimentary use of our new pool and fitness centre
- Free local phone calls from all guest rooms
- Full business centre with the latest in computer technology
- Free wireless high speed internet in all guest rooms
- Several dining options to choose from including the Mayfield Dinner Theatre
- 100% Smoke Free Environment
- Complimentary West Edmonton Mall Shuttle



## Hilton HHonors™



With Hilton HHonors™, you can earn points towards free nights every time you stay at one of our ten distinct brands and can even earn rewards for booking a meeting or event. With a hotel for every style, budget and occasion, Hilton HHonors lets you transform points into memories you can't help but share at more than 3,800 hotels and resorts worldwide.

Not a member? Join now by visiting [HHonors.com/join](http://HHonors.com/join)



## Awards & Recognition

### Venue of the Year at the MPI Greater Edmonton Event Management Awards

Edmonton, AB, June 19, 2015 – DoubleTree by Hilton™ West Edmonton has won the Venue of the Year Award at the Meeting Professionals International (MPI) Greater Edmonton Event Management Gala. This annual event recognizes outstanding people and companies within the event industry.

### TripAdvisor® 2015 Certificate of Excellence Award

The Certificate of Excellence award celebrates hospitality excellence and is only presented to businesses that consistently achieve outstanding traveller reviews on TripAdvisor®. To qualify for the award, businesses must maintain an overall rating of four or higher as reviewed by travellers on the travel website. Only the top performing 10 per cent of businesses listed on TripAdvisor® receive the award.



### Best Hotel in Western Canada by Meetings + Incentive Travel

Vancouver, B.C., November 25, 2015 – The DoubleTree by Hilton™ West Edmonton has been voted by readers of *Meetings + Incentive Travel* magazine as the Best Hotel in Western Canada. The hotel was nominated for the award by past guests who had hosted meetings and conferences at the hotel over the past year. The DoubleTree by Hilton™ West Edmonton beat out 29 premier hotels across Manitoba, Saskatchewan, Alberta and B.C.

More than 1,500 people cast their votes for the year's best Canadian hotels, venues and meeting service suppliers in the magazine's annual Readers' Choice Awards. Competing against more than two dozen luxury hotels including Chateau Lacombe and Hotel MacDonald by Fairmont, DoubleTree by Hilton™ West Edmonton was chosen by readers as first in its class, taking home the award for Best Hotel in Western Canada.



## Value Added

In recognition of the Jehovah's Witness 2017 Regional Conference event you are hosting with the DoubleTree by Hilton™ West Edmonton we are able to offer you additional value added inclusions for your upcoming event:

- The Hotel agrees to provide the Client with one (1) complimentary Deluxe room per every **50** paid rooms occupied by your attendees for the official dates of your meeting listed on the first page of this Agreement. Complimentary rooms will be credited to the Client once guestrooms have been actualized.
- 10,000 HHonors points to the event planner when contract is signed

## Guestroom Information

The following room block is currently available for your group:

	07/20/2017	07/21/2017	07/22/2017
Deluxe 2 Queen	70	70	70
Deluxe 1 King	20	20	20
1 King Suite	60	60	60

We are pleased to confirm the following room rates:

Room	Single Rate	Double Rate	Triple Rate	Quad Rate
Deluxe 2 Queen	139	139	145	149
Deluxe 1 King	139	139	145	149
1 King Suite	149	149	155	159

The above room rates include complimentary:

- Hot buffet breakfast for the amount of people booked into the room per night
- Parking
- wireless internet access
- local and 1-800 phone calls
- along access to our pool, fitness and business centres.

Children under 12 years of age stay free in their parent's room.

## Pre and Post Dates

We will extend the above group rates, three (3) days before and three (3) days after the contracted convention dates, subject to guestroom availability.

## Tax & Service Charges

Please add 4% Edmonton Tourism Levy, 3% Destination Marketing Fee and 5% GST (Goods and Services Tax) to the above rates.

All room rates are subject to applicable taxes. All tax structures and percentages are subject to change without notice. Non-residents of Canada are eligible for an exemption from the 5% Goods and Services Tax (room portion only) upon completion of an Assignment of Rights to Short Term Accommodation.

## Reservation Methods

We offer a variety of reservation methods including the following:

- Individuals may reserve their guestrooms with one of our Reservation Agents. We offer two (2) reservation numbers: (780) 484-0821 or our toll free number 1-866-223-8654
- An online reservation link to allow your attendees to book their room online and allows you as the organizer to check pick up at your convenience.
- Rooming List – we are pleased to accept rooming lists with your billing instructions. Once these reservations are processed, you will receive a confirmation list.



## Cutoff Date

Room blocks are typically held until 4 weeks prior to arrival after which date, any unsold rooms in your block are released for general sale.

## Confirming Your Group Arrangements

Thank you for considering our property as the location for your upcoming event, we would be delighted to assist you in planning this very important meeting. Please note that I am currently holding space for your event and will continue to do so until **October 31, 2016**. This proposal will be valid until that time, after that date pricing and availability will be subject to availability and may change.

I will contact you shortly to review the proposal and confirm arrangements as necessary, if there is anything I can do to assist with your decision making process, please feel free to contact me anytime.

I look forward to working with you and securing your business here at the new DoubleTree by Hilton West Edmonton.

Sincerely,

### Tara Fraser, Sales Manager

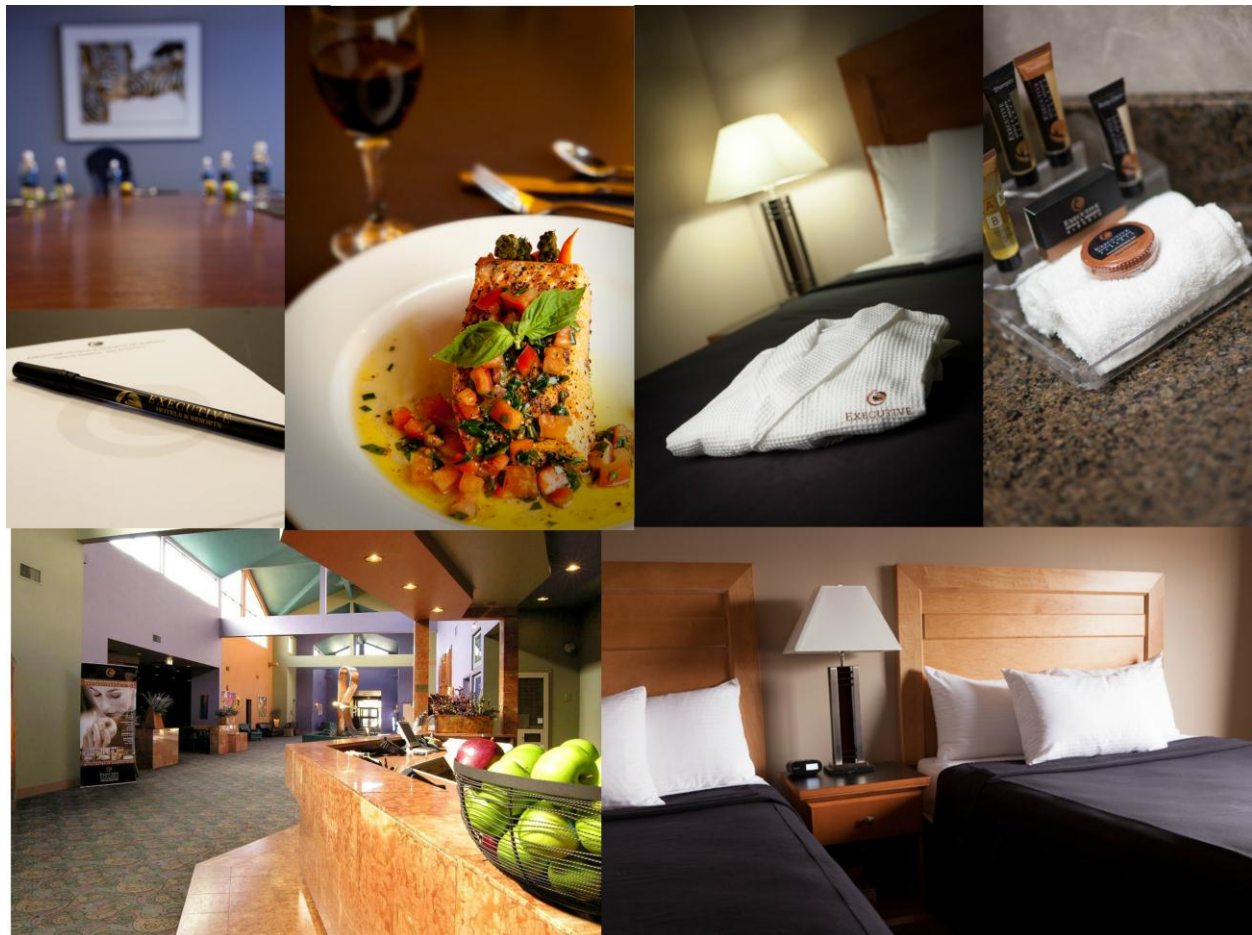
DoubleTree by Hilton West Edmonton  
16615 109 Avenue  
Edmonton AB T5P 4K8  
Direct: 780-930-4020  
E-mail: tara.fraser@hilton.com



**EXECUTIVE ROYAL HOTEL**  
WEST EDMONTON

**Jehovah's Witnesses' 2017  
Regional Convention  
July 21-23, 2017**

Submitted by:  
Megan Henwood – Sales Manager  
D: 780-930-6856  
E: [sales.ere@royalhotelgroup.ca](mailto:sales.ere@royalhotelgroup.ca)





**EXECUTIVE ROYAL HOTEL**  
WEST EDMONTON

**RE: Jehovah's Witnesses' 2017 Regional Convention**

Dear Planning Committee,

Thank you for your interest in The Executive Royal Hotel West Edmonton for the **Jehovah's Witnesses' 2017 Regional Convention** to be held in July 2017. We are honored to have the opportunity to present our proposal outlining all appropriate accommodation requirements. Should this meet with your approval, a formal agreement will follow for your signature.

When it comes to hotels in Alberta's capital, few can rival the location of Executive Royal Hotel West Edmonton. Conveniently located in the heart of West Edmonton, our full service, convention hotel is located a very short distance from the world famous West Edmonton Mall and 15 minutes from Downtown and the new Ice District, Canada's largest entertainment district, centered by Rogers Place, home to the Edmonton Oilers.

At the Executive Royal Hotel West Edmonton, we do things differently. We combine style, innovation and impeccable guest service to provide you with a welcoming sense of arrival. The hotel facilities include 235 tastily appointed guest rooms and suites, licensed full service Steels Cafe & Grill and Mirage Lounge, banquet and meeting rooms, business centre and a large fitness centre. We invite you to experience the Executive Royal Hotel West Edmonton.

We look forward to welcoming the **Jehovah's Witnesses' 2017 Regional Convention** and look forward to working with you to ensure your stay is memorable.

Sincerely,

Megan Henwood  
**Sales Manager**  
**Executive Royal Hotel West Edmonton**  
D: 780-930-6856  
E: [sales.ere@royalhotelgroup.ca](mailto:sales.ere@royalhotelgroup.ca)



**EXECUTIVE ROYAL HOTEL**  
WEST EDMONTON





**EXECUTIVE ROYAL HOTEL**  
**WEST EDMONTON**

**GUEST ROOMS & ROOM RATES**

Outlined below is the guestroom breakdown proposed for the **Jehovah's Witnesses' 2017 Regional Convention**.

<b>ARRIVAL</b>	<b>DEPARTURE</b>
July 20, 2017	July 23, 2017

<b>ROOM TYPE</b>				
	July 20	July 21	July 22	July 23
Standard 1 Queen Bed	50	50	50	Checkout
Standard 2 Queen Bed	50	50	50	Checkout

<b>2017 RATES</b>				
	Single	Double	Triple	Quad
Standard 1 Queen Bed	\$129.00	\$129.00	\$144.00	\$159.00
Standard 2 Queen Bed	\$129.00	\$129.00	\$144.00	\$159.00

Total Room Nights: **300**

Currently room rates are subject to the following taxes: Goods & Services Tax 5%, Alberta Tourism Levy 4%, and Destination Marketing Fee 3%.

Please note that the above taxes may change without notice.

All rates quoted above include Continental Breakfast.

Rates are honored 2 days pre and post event date.

## FOOD & BEVERAGE



### STEELS CAFE & GRILL

Steels Café & Grill's bright atmosphere is an excellent setting to enjoy your favorite meal. Executive Chef Michael Bird will tantalize your taste buds with creations from the around the world and regional classics. Serving breakfast, lunch, dinner, and our award winning Sunday Brunch.

### MIRAGE LOUNGE

Unwind in the Mirage Lobby lounge, catching the game on our big screen televisions or try your luck on one of the video lottery terminals.

## AMENITIES

- ❖ Complimentary Wireless Internet throughout the Hotel
- ❖ Complimentary Parking
- ❖ 5,500 Sq Ft Meeting Space
- ❖ Onsite Business Centre
- ❖ Coin Laundry
- ❖ Complimentary 24 hour access to our newly renovated gym
- ❖ Hypoallergenic Luxury Flooring
- ❖ Coin operated laundry room available

Thank you allowing us the opportunity to propose on your event. Our team is eager to deliver our award winning customer service.

Please feel free to contact me directly with any questions or concerns you may have.

Sincerely

Megan Henwood  
**Sales Manager**  
**Executive Royal Hotel West Edmonton**  
D: 780-930-6856  
E: [sales.ere@royalhotelgroup.ca](mailto:sales.ere@royalhotelgroup.ca)



**EXECUTIVE ROYAL HOTEL**  
WEST EDMONTON

*Fairmont*  
HOTEL MACDONALD



## Watch Tower, Bible & Tract Society of Ca

**Sent:**October 03, 2016

**Expires:**October 03, 2016

**Event Dates:**July 18, 2017 - July 27, 2017

Rosemary Carroll

Senior Sales Manager

Tel: 780-429-6421

Fax: 780-424-8017

10065 - 100 Street

Edmonton AB Canada T5J 0N6

Tel: 780-424-5181

[rosemary.carroll@fairmont.com](mailto:rosemary.carroll@fairmont.com)

### **Contact Me**

Thank you for considering Fairmont Hotel Macdonald for the Watch Tower Bible and Tract Society of Canada's **Jehovah's Witnessess' July 2017 Regional Conference**.

The guestrooms required as outlined below is currently available but not being held for your program.

To assist with your decision making, you will find additional hotel and destination information in the menu of tabs across the top of this page. The rates quoted for these dates are available until November 3rd, 2016 at which time the link to this proposal will expire.

We look forward to the opportunity to create a memorable stay experience for your guests.

Rosemary Carroll, Senior Sales Manager  
On behalf of Marcel Wache, Sales Manger



ROOM CATEGORY	FRI JULY 21, 2017	SAT JULY 22, 2017	SUN JULY 23, 2017
Fairmont	46	46	46
Fairmont View Rooms	7	7	7
Deluxe Room	27	27	27
Deluxe View	15	15	15
Grand Deluxe View	5	5	5
<b>Total Room Nights per Day</b>	<b>100</b>	<b>100</b>	<b>100</b>
<b>Total Room Nights</b>	<b>300</b>		

All room rates are subject to a 4% Alberta Provincial Tourism Levy, 3% Destination Marketing Fee (Subject to GST) and 5% Goods and Services Tax (GST). All tax structures and percentages are subject to change without notice.

Room rates above are quoted in Canadian funds and are net, non-commissionable.

#### GUESTROOM & SUITE RATES:

I am pleased to confirm the following discounted group rates as outlined below:

Rates per night Single/Double Occupancy

Fairmont \$189.00

Fairmont View \$219

Deluxe \$219

Deluxe View \$249

Executive Suites \$439

Fairmont Gold \$339

Fairmont Gold View \$389

#### ROOMS SPECIAL CONCESSIONS:

The Fairmont Hotel Macdonald is pleased to offer the following special concessions:

- One (1) complimentary room night for every fifty (50) paid room nights over the meeting dates.
- For those guests who wish to extend their stay in Edmonton, room rates above will be offered for up to a total of three (3) days pre and three (3) days following the official conference dates, on a space available basis.

Monday, 26 September 2016

## **Jehovah's Witnesses' 2017 Regional Convention**

Dear Jehovah's Witnesses' 2017 Regional Convention,

Thank you for your interest in placing your guests for Jehovah's Witnesses' 2017 Regional Convention with Starwood Hotels & Resorts. I am very pleased to introduce myself as your representative for Four Points by Sheraton Edmonton South. My goal is to provide seamless and efficient communication to find the best fit and value for your program. Detailed below is information on how your program would fit at our property. I look forward to speaking with you soon!

### **1st Option**

We are delighted to be able to offer you 1st option availability and are holding the space for you until Monday, 17 October 2016, after which time the space is will be released if not confirmed.

### **Information Only**

We are delighted to propose the following rates and information to you, please contact me directly if you wish to provisionally hold space and I would be delighted to assist.

---

## **Four Points by Sheraton Edmonton South**

Simply Stunning. Experience uncomplicated comfort at one of Edmonton's finest hotels - the Four Points by Sheraton Edmonton South; where you'll be greeted by the serene sounds of our gentle running water wall and the cosiness of our lobby fireplace. Located on Argyll Road and 75th Street, we are only minutes from downtown, Northlands Park, Rexall Place, South Edmonton Common shopping area, trendy Whyte Avenue and bustling Sherwood Park.

Bells & Whistles, Too. Our Duke of Argyll Pub and East 75 restaurant along with over 11,000 square feet of meeting space and 139 guestrooms are sure to guarantee you a successful event. Your stay with us includes complimentary High Speed Internet Access, complimentary unrestricted parking, complimentary in-room water, fitness center, business center, indoor heated pool as well as our renowned Four Points Four Comfort™ Bed, insuring a restful night's sleep.

Award Winning Comfort. We are the proud recipients of the Alberta Hotels and Lodging Association's Housekeeping Award for 13 consecutive years. But don't just take their word for it. Come visit, and you'll see what the buzz is about.



WESTIN



THE  
LUXURY  
COLLECTION



MERIDIEN

DESIGN  
HOTELS

TRIBUTE  
PORTFOLIO



loft

FOUR  
POINTS

## Accommodations

Any changes of pattern or quantities are subject to availability and may incur a rate change.

### Attendees Room Block

	Fri, Jul 21, 2017	Sat, Jul 22, 2017	Sun, Jul 23, 2017	Total
Deluxe (NQ2)	40	40	40	120
<b>Attendees Room Block Total</b>	<b>40</b>	<b>40</b>	<b>40</b>	<b>120</b>

Total Number of Guestrooms: 120

## Accommodation Rates

Kindly note all rates are exclusive of Breakfast and Tax unless otherwise stated. Rates are valid for the services, dates and numbers offered above.

### Attendees Room Block

Rooms	Single Rate	Double Rate	Triple Rate	Quad Rate
Deluxe (NQ2)	\$109	\$109	\$119	\$129

## SPG Pro

You're in the people business, and in this line of work, business is always personal. We don't just look at what you do for a living; we also look at what you do for life. That's why we created SPG Pro, a loyalty offering that rewards you personally for the things you do professionally.

- Great Points. Earn 1 Starpoint for every US\$3 you book for meetings to a max of 20,000 Starpoints per event. Earning gets richer when you reach elite status.
- Go elite. Earn 1 eligible night toward elite status for every 20 group room nights to a maximum of 20 eligible nights per event. Elite status starts at just 25 eligible nights per year.
- You've earned it. Redeem Starpoints for whatever you want – like a free night at The St. Regis New York or VIP treatment at the US Open.

[Join Now](#)

## Looking for any other destinations?

If you are looking for meeting space and/or group bedrooms at any other destination, we would be delighted to reach out to one of our over 1,000 properties around the world.

Please click on the link to browse our property directory: [Starwood Hotels & Resorts](#)

If you have any questions or require any additional information, please feel free to contact me.

Kind Regards,

Morgan Matechuk  
Group Sales Manager





**MacEwan**  
UNIVERSITY

GUEST ACCOMMODATION  
SERVICES

**MacEwan University**

**Proposal to**

**Jehovah's Witnesses' 2017  
Regional Conference  
July 21-23, 2017**

**Watch Tower, Bible and  
Tract Society of Canada**

## Welcome to MacEwan University, City Centre Campus

We are conveniently located in the heart of downtown Edmonton. MacEwan University is nestled among a wide variety of shopping, dining and entertainment venues and walking distance to many of Edmonton's finest establishments!

The professionals from the Guest Accommodation Services team will attend to every detail of your stay from the initial stages to the very end. During your stay there will be at least one staff member dedicated to ensuring your needs are attended to while in residence.

MacEwan University's Food Services include a full service on-site catering department. Our Catering Manager works closely with you to customize menus which address your food service requirements and budget

All of the theatres and classrooms on-campus are equipped with state-of-the art audio visual and multimedia equipment, including console, data projector, wall screen(s) and microphone. All other spaces accommodate portable units. There are video conference capabilities in all spaces. Initial A/V consultation/setup and startup is included in all function space rentals.

We are within walking distance to the Ice District (Rogers Place), local shops, restaurants and the MacEwan University LRT Metroline which can provide a convenient link to the offerings located at the city core.

Thank you for considering MacEwan University. We hope that you find the provisions outlined in the proposal favorable. **Please contact Kristine Monteiro at [stay@macewan.ca](mailto:stay@macewan.ca) or 780-497-5032.**

## **MACEWAN UNIVERSITY RESIDENCE**

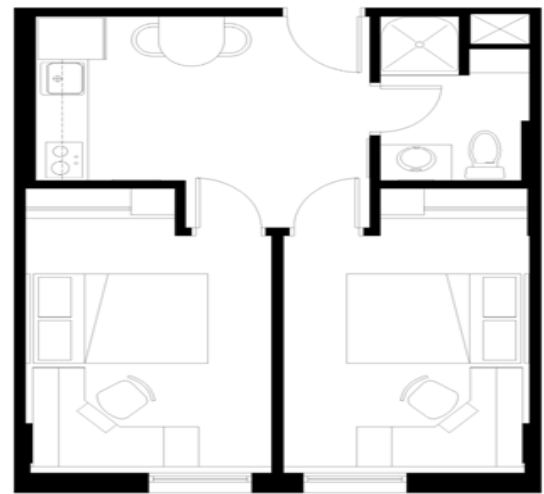
---

MacEwan University Residence has over 350 suites available May through August and nine hotel rooms available year-round. Its location in downtown makes it an ideal home base for your stay in Edmonton. You'll have easy access to public transit, shopping, restaurants, entertainment, tourist attractions and Edmonton's spectacular river valley.

Visit <http://www.macewan.ca/conference> for a virtual tour of MacEwan University Residence



Two- bedroom common area



**2 BEDROOM UNIT**

40.7 m<sup>2</sup> (438 s.f.)

April 29, 2004



Bedrooms in Four-bedroom and  
Two-bedroom suites



Bachelor Suite





**Jehovah's Witnesses' 2017 Regional Convention  
July 21-23, 2017**

Standard Bachelor Suite	\$70.00/night sleeps 1-2 ppl (1 double beds)
Standard 2-Bedroom Suite	\$90.00/night sleeps 2-4 ppl (2 double beds)
Standard 4-Bedroom Suite	\$220.00/night sleeps 2-4 ppl (4 double beds)

**Room Block Availability**

30	Standard Bachelor Suites
200	Standard 2-Bedroom Suites
10	Standard 4-Bedroom Suites

**All Rates are in CDN funds and subject to, 4% Provincial Tourism Levy and 5% GST**

**Special Considerations:**

- Room block rate extended three days pre and post conference based on availability
- Reduced parking rate of \$13/night (subject to change)
- Free Pool/Fitness Room access

**Each standard suite includes:**

- Private bathroom with shower.
- Kitchen complete with refrigerator, stove-top and microwave oven.
  - Note: Dishes are available for rent.
- Lockable bedrooms furnished with double bed, complete with bed linen, towels provided.
- Housekeeping service with linen and towel change every three days.
- Complimentary wireless Internet

**MacEwan University Residence also offers the following for guest convenience:**

- On-site Catering at economical prices
- Two lounges on each floor. One lounge on each floor is equipped with TV's, with satellite service and DVD player.
- Bank machine (ATM) in the lobby.
- Laundry facilities with a cash card system
- Complimentary newspaper in the lobby.
- Parking passes available for purchase.
- Front desk staffed 24 hours/day.
- Secure room reservations with a Visa or MasterCard number.
- Edmonton Sky Shuttle offers convenient service directly from the Edmonton International Airport to MacEwan Residence. Visit [www.edmontonskyshuttle.ca](http://www.edmontonskyshuttle.ca)
- MacEwan University Residence is a smoke free environment.



welcome to hampton inn and suites edmonton west.

Monday September 26<sup>th</sup> 2016

Jehovah's Witnesses' 2017 Regional Convention  
 Watch Tower, Bible and Tract Society of Canada  
 6149 157A Ave  
 Edmonton AB T5Y 2P6

Dear Client,

Thank you for considering the Hampton Inn & Suites Edmonton West for your upcoming travel with the Jehovah's Witnesses' 2017 Regional Convention! Based on your needs, I'm excited to share the following aspects of our property to make your guests' stay more comfortable and a "home away from home".

- Complimentary hot breakfast offered daily, allowing your guests to start their day off right without an additional charge.
- Complimentary high-speed and Wireless Internet access in the lobby and all guestrooms, allowing your guests to easily stay connected to their customers and family while at our hotel.
- Guests have the option to earn both HHonors points & airline miles.
- Complimentary Business Centre
- Exercise facilities, pool, and hot tub.
- Guest laundry facilities
- Meeting Planner points credited to the group organizer
- Ample complimentary parking

We are pleased to offer a special rate of \$139 per night for our Standard Double Queen Guestrooms for the duration of your stay. This is our way of saying that we love having you here! I have outlined your group block and corresponding rates below:

<b>arrival</b>	07/20/2017	<b>departure</b>	07/23/2017
----------------	------------	------------------	------------

**Sleeping Rooms**

room type	rate	07/20/17	07/21/17	07/22/17
Standard Two Queens	\$139	35	35	35
Two Queen Studio Suite	\$179	5	5	5
Total		40	40	40

**SPECIAL INSTRUCTIONS:** The above quoted guestroom rates are subject to 5% GST, 4% Hotel Tax, and 3% Destination Marketing Fee for a total of 12% taxes. Prevailing taxes and fees are subject to

change. Rates are quoted in Canadian Dollars and are net non-commissionable. The above rates are based on quad occupancy (four guests per room).

**Contract Details**

<p><b>Method of Reservation</b></p>	<p>Rooming List</p> <p><b>METHOD OF PAYMENT:</b> Jehovah's Witnesses' 2017 Regional Convention will pay for room and tax. Individuals will be required to provide a valid credit card at time of check in for incidentals.</p> <p><b>HOW TO MAKE RESERVATIONS:</b> Rooming List</p> <p><b>EARLY/LATE ARRIVALS AND DEPARTURES:</b> All reservations must be guaranteed with a valid credit card for late arrival. The Hampton Inn &amp; Suites cannot guarantee a late-check out on the departure date; we will do our best to accommodate for one room to be available for storage if necessary.</p>
<p><b>Cut-Off Date</b></p>	<p>Guestrooms will be held until 5:00Pm MTD on June 21, 2017. Guestrooms not confirmed at that time will be released and space will be subject to availability.</p> <p><b>ACCOMMODATIONS:</b> We request that all reservations be made by the method indicated no later than the cut-off date listed above. After the cut-off date, we reserve the right to offer rooms held in your block to other customers to reduce our losses from unused rooms. Reservations by your attendees after the cut-off date will be accepted based on availability.</p>
<p><b>Billing Instructions</b></p>	<p>Jehovah's Witnesses' 2017 Regional Convention will pay for room and tax. Individuals will be required to provide a valid credit card at time of check in for incidentals.</p>
<p><b>Cancellation Policy</b></p>	<p><b>INDIVIDUAL CANCELLATIONS:</b></p> <ul style="list-style-type: none"> <li>- Individual bookings may be cancelled up to 72 hours prior to arrival date. Group must remain for the entire stay regardless of tournament outcome.</li> </ul> <p><b>CANCELLATION AND PERFORMANCE:</b>  <b>Jehovah's Witnesses' 2017 Regional Convention</b> cancel this Agreement only upon giving written notice to the Hampton Inn and Suites. Cancellation of entire group can be made without penalty up to thirty days prior to arrival date, and the unsold inventory will be released back into Best Available transient inventory.</p> <p>I understand and comply with Cancellation and Performance (initial): _____</p>
<p><b>Indemnity Clause</b></p>	<p><b>Jehovah's Witnesses' 2017 Regional Convention</b> agrees the Hampton Inn &amp; Suites Edmonton West may, at its sole discretion, cancel this agreement by giving the <b>Jehovah's Witnesses' 2017 Regional Convention Group</b> written notice, if the Hotel decides that to hold the function may result in civil commotion, harassment of patrons of the Hampton Inn &amp; Suites Edmonton West or damage thereto. The Hotel shall, as soon as reasonably possible, return to <b>The Jehovah's Witnesses' 2017 Regional Convention Group</b> any deposit paid, and there shall be no further liability.</p> <p>It is understood and agreed that the Hampton Inn &amp; Suites Edmonton West shall not be liable or responsible in any manner for any damages sustained by any party to the contract, or by any other person, firm or corporation partaking in any aspect of the event.</p> <p><b>Jehovah's Witnesses' 2017 Regional Convention</b> agrees and undertakes to indemnify Hampton Inn &amp; Suites Edmonton West against any and all claims and expenses presented by any person, firm or corporation for any loss or damages resulting from:</p> <ul style="list-style-type: none"> <li>• The Hampton Inn &amp; Suites Edmonton West being unable to perform the services set out in the agreement as a result of any strike, flood, fire, force or Act of God.</li> </ul>



	<ul style="list-style-type: none"> <li>• The conduct of any person or persons attending the function.</li> <li>• The conduct of the Convener or the Management of the function by the Convener.</li> </ul> <p>The Jehovah's Witnesses' 2017 Regional Convention Group to indemnify and save harmless the Hampton Inn &amp; Suites Edmonton West against any and all claims and expenses presented by any person or persons, firm(s) or corporations attending the function for loss or damages sustained in the areas of the Hampton Inn &amp; Suites Edmonton West designated for holding of the function.</p>
<b>Agreement Terms</b>	<p>To confirm rates quoted and the availability of rooms requested, please sign this agreement by 10/7/2016 or the requested guestrooms and meeting space will be released.</p> <p><b>The rates above have been negotiated by the Jehovah's Witnesses' 2017 Regional Convention Group, and do require a minimum number of 96 room nights. All rooms must be guaranteed with a credit card at time of booking, and the rate is only guaranteed until June 21<sup>st</sup> 2017.</b></p>
<b>Special Requests</b>	Special requests such as cots, adjoining rooms, refrigerators, etc... will be subject to availability.
<b>Guarantee</b>	A credit card authorization form must be returned with the contract to guarantee the group booking. This will be used to hold the rooms only, and individuals will still be required to provide their credit card for their reservations. The card will not be charged unless the cancellation notice above has not been honored.

A block will be made for your group upon receipt of the contract. If this meets your approval, please sign the area indicated below and return via email or fax if you agree to the terms and conditions of this contract.

Again, thank you for considering our hotel and please let us know if there is anything special we can do to make the stays for your athletes the most enjoyable it can be!

Best regards,  
Sareena Amarshi

**Sareena Amarshi**  
**Sales Manager**  
**780-409-1644**  
[Sareena.amarshi@hilton.com](mailto:Sareena.amarshi@hilton.com)

---

**client signature and date**

---

**sales person's signature and date**

The ideal hotel in the perfect  
location.

Dining, shopping, business and more  
are close at hand when you stay at the  
Hilton Garden Inn West Edmonton.  
Located in the heart of vibrant West  
Edmonton, we are very convenient to  
the Edmonton International Airport  
and just minutes from downtown.

Come, let us show you why

*Life is Better at the  
Garden*

 **Hilton  
Garden Inn**<sup>®</sup>  
West Edmonton



**Jehovah's Witnesses' 2017 Regional Convention**

Arrival Date: July 21, 2017

Departure Date: July 23, 2017

Thank you so much for reaching out. Please if you have any questions or if you would like further information, do not hesitate to reach out.

We look forward to warmly welcoming you and your delegates and to working with you to ensure a successful event and memorable experience for your guests.

Sincerely,

*Jackie Cassidy*

Jackie Cassidy

780-486-8967

jackie.cassidy@hilton.com





## **GUEST ROOM BLOCK**

The Hilton Garden Inn West Edmonton would be pleased to provide a total of 100 room nights as follows:

	<b>Friday 07/21/2017</b>	<b>Saturday 07/22/2017</b>	<b>Sunday 07/23/2017</b>
<b>Standard Room</b>	50	50	Check out
<b>Rate</b>	\$134	\$134	n/a

\* Rates are net, non-commissionable, and are subject to 5% GST, 4% Provincial Government Tourism Levy & 3% Destination Marketing Fee.

Rates are based on single/double occupancy; add \$10 per night for each additional occupant.\*

## **ROOM AMENITIES**

- **Ideal for working or streaming a movie** - complimentary wired & wireless high speed internet access
- **Ergonomic comfort at its best** - Oversized desk with desk-level outlets, adjustable lighting, & **Herman Miller™** chair
- **The perfect companions for our new beds** - 250 thread count, hypoallergenic bedding, & 2 types of pillows
- **Comfort you have only dreamed about** - New Serta Perfect Sleeper PLUSH beds made expressly for Hilton Garden Inn
- **All the conveniences of home** - Microwave, Keurig coffee maker, & mini-fridge, standard in all rooms
- **Personalize your environment** - Individually controlled heating and cooling units
- **Peace of mind** - Safes in all rooms – large enough to hold a full sized laptop
- **Coifed, pressed and ready for anything!** - Hair dryer, iron, and ironing board – dry cleaning service available
- **More elbow room in the shower** - Curved shower curtain rod & **Neutrogena™** toiletries



## **HOTEL AMENITIES**

- ***When you work, we work*** - Complimentary 24/7 Business Center
- ***Forgot something?*** - 24 Hour Pavilion Pantry Market
- ***Let us do the work*** - Baggage Service Available
- ***Here for a while?*** - Coin Laundry
- ***Skip the bank*** - Foreign Currency Exchange
- ***For your convenience*** - Automated Teller Machine (ATM) in lobby
- ***Ask us*** - Multilingual Staff
- ***Let us take care of the important things*** - Safety Deposit Box
- ***You've never had a hotel buffet like this*** - Onsite catering with experienced staff
- ***We do it all*** - Onsite Audiovisual equipment and servicing available
- ***Best Butter Chicken ever!*** - Full, cooked-to-order breakfast, lunch and dinner available in our restaurant
- ***Relax after a long day*** - Evening Room Service available
- ***Stay fit!*** - Complimentary Fitness Center featuring premium cardio and weight training equipment. Atrium with heated indoor pool and hot tub adjacent to Fitness Centre
- ***Life is better on the patio*** - Relax with a cocktail in the Backyard Lounge & West Edmonton's only outdoor patio
- ***Get rewarded*** - As an HHonors™ member, earn both hotel points and airline miles for the same stay



***HHonors™, our guest reward program, allows loyal guests to enjoy a host of privileges during their stays. Membership is free and HHonors™ points can be redeemed for a variety of rewards including hotel stays and dream vacation packages. Visit [www.hhonors.com](http://www.hhonors.com) for more details!***



***We look very forward to welcoming you***

## PROPOSAL

October 5, 2016

### WATCH TOWER CONVENTION

Thank you for the opportunity to present the Holiday Inn Conference Centre Edmonton South! This proposal is regarding your upcoming event scheduled **21-23 July 2017**



### LOCATION

**Holiday Inn Conference Centre** offers 221 renovated deluxe guest rooms and 3 tastefully appointed Executive Suites and is located just 10 km from downtown Edmonton and 26 KM north of Edmonton International Airport. The Hotel is conveniently located just off the Anthony Henday exiting on Gateway Boulevard in the business and shopping district and is just minutes away from South Edmonton Common, Southgate Shopping Centre and Whyte Avenue.

### HOTEL FEATURES

**We are delighted with your expressed interest to host your upcoming event at our hotel.**

**Our Hotel offers a comfortable setting for your attendees, such as:**

- 224 deluxe guest rooms, including 3 Executive King Suites, 71 King Business Class, 57 one Queen rooms, 90 two Queen rooms, 3 Accessible rooms – 1 queen roll-in shower
- Mid-size beautifully appointed banquet facilities of over 7200 sq. ft of flexible meeting & banquet facilities accommodating up to 280 people banquet style.
- **Complimentary High Speed Internet Access/ Wi-Fi in all Guestrooms, and lobby area**
- Sky Shuttle Service available from the airport to hotel for \$18.00 per person
- Two great on-site restaurant locations to choose from:
  1. Gateway Breakfast Restaurant open daily for breakfast (**Complimentary Breakfast**)
  2. Fionn MacCool's Irish Pub Lunch/Dinner daily offering fresh food options, in-room dining. Patio, open seasonally. Evening live entertainment Thursday-Saturday
- Guestrooms feature Holiday Inn's new luxury bedding
- All rooms are non-smoking offering your guests a smoke free environment
- 32" Panel HDTV with Pay per view movies and OnCommand games
- Voice Mail, Dataport Telephones, Refrigerator, coffee maker, hair dryer, iron & ironing board
- On Site Complimentary Business Center 24hr
- On Site Fitness Center
- Indoor swimming pool and whirlpool
- **Complimentary Parking**



**GUEST ROOM BLOCK:**

Currently, we are able to accommodate the following requirements:

ROOM TYPE	RATE	21-23 July, 2017
One or Two Queen	\$109	225 Room Nights
King Room	\$129	45 Room Nights
Upgrade Suite	\$109	3 Room Nights

The above quoted guestroom rates are subject to 5% GST, 3% Destination Marketing Fee and 4% Tourism Levy for a total of 12.27% taxes. Prevailing taxes and fees are subject to change. Rates are quoted in Canadian Dollars and are net non-commissionable.

Room rates quoted above based on minimums listed and outlined on your proposal. Please note no group rooms are being held beyond 15<sup>th</sup> of October, 2016 for Watch Tower Convention. Kindly contact us should you wish for the Holiday Inn Conference Centre Edmonton South to place a tentative hold on these above guest room(s), your proposed group block.

I appreciate your interest in Holiday Inn Conference Centre Edmonton South. I can be reached at 780.989.6757, however please be assured I will follow up regarding securing your dates. You may also reach me directly by email at [abdul.melhem@whg.com](mailto:abdul.melhem@whg.com)

*Warmest Regards,*

**Abdul Melhem | Director of Sales**

Holiday Inn® Conference Centre Edmonton South  
4485 Gateway Blvd. | Edmonton, AB | T6H 5C3  
P: 780.989.6757 | D: 780.554.5798  
E: [abdul.melhem@whg.com](mailto:abdul.melhem@whg.com)

# Holiday Inn Express & Suites West Edmonton

18520 100 Avenue West  
[www.holidayinnexpress.com](http://www.holidayinnexpress.com)



Monday October 3, 2016

## Organization: Jehovah's Witnesses' 2017 Regional Convention

Dear National Managers & Representatives

Thank you for the opportunity to host the **Jehovah's Witnesses' 2017 Regional Convention**.  
Having a full understanding of your specific needs we have outlined the details of our proposal below.

### Our Understanding of Your Needs

We understand that you are looking for a location that offers the following:

- Competitive Group Rates
- Free Hot Express Breakfast Buffet for the Group
- Fridge & Microwave in each room
- Free Parking
- Great Room Area for group to meet and convene
- Outdoor BBQ Gazebo Area

### Room & Rate Offering:

Date of Check in : Thursday July 20<sup>th</sup>, 2017  
Date of Check out : Sunday July 23<sup>rd</sup>, 2017  
Date of Release : Friday June 16<sup>th</sup>, 2017  
Method of Payment : Master/Group Payment

	July 20 <sup>th</sup> , 2017	July 21 <sup>st</sup> , 2017	July 22 <sup>nd</sup> , 2017
Double Standard Queen Rooms	80	80	80
Rates Offered	\$139.00	\$139.00	\$139.00

- Rates are valid for SINGLE/DOUBLE Occupancy
- Breakfast Included in rates and offered: Monday to Friday 6:30 am – 9:30 am  
Saturday & Sunday 7:00 am – 10:00 am
- Rates are subject to 12.27% additional taxes and levies. (5% GST, 4%Destination Marketing Fee, 4%Tourism Levy)
- Rates have been offered as NON COMMISSIONABLE
- Check In: 3:00 PM / Check Out: 11:00 am

## Holiday Inn Express & Suites West Edmonton

18520 100 Avenue West  
[www.holidayinnexpress.com](http://www.holidayinnexpress.com)



### At a Glance

- Free Full Hot Express Breakfast Included in all rates offered
- Complimentary parking and Wi-Fi
- Heated indoor pool and whirlpool, fully equipped fitness center with natural light & large windows
- Close to West Edmonton Mall
- Event space for up to 20 guests and 24-hour business center

### Release Date :June 16<sup>th</sup>, 2017

The rate offered and number of rooms agreed upon will be available to book via booking link, by telephone or online until the date of release. If you require guestrooms after the date of release, please contact the sales department directly (780) 604-7776.

### Method of Payment

Individuals will be responsible for their own room, tax and incidentals (telephone, movie, etc.) a credit card will be required to guarantee at time of booking. A third party authorization will be required if the guest will not have the card present at time of check in.

### Cancellation Policy

#### **Rooms can be cancelled up one week prior to check in.**

Any reserved rooms in your group block that neglect to cancel one week prior to check in and do arrive for their stay will be charged a one night stay applicable to taxes and taxes and charged to the credit card provided for payment.

Our property was recently opened this fall and we are very eager to gain your business and loyalty as we establish our refreshing new Formula Blue concept for Holiday Inn Express & Suites. If you are in agreement with the above proposed offer; please sign and return the agreement.



## Holiday Inn Express & Suites West Edmonton

18520 100 Avenue West  
[www.holidayinnexpress.com](http://www.holidayinnexpress.com)



If the above outlines inclusions and agreement suit the needs of your group please sign and send back the agreement to Lisa Palmer, Director of Sales [lpalmer@hiecws-westedmonton.com](mailto:lpalmer@hiecws-westedmonton.com). F:780-604-7776.

---

Convention Organizers

---

Date

---

Lisa Palmer, Director of Sales

---

Date



**Hyatt Place Edmonton/Downtown**  
9576 Jasper Avenue NW  
Edmonton, AB T5H 2H7  
Phone : +1 780 616 7007  
Fax : +1 587 523 6464  
E-mail : rachel.macknee@hyatt.com  
Edmontondowntown.place.hyatt.com

26 September 2016

Watch Tower, Bible and Tract Society of Canada

Further to your recent inquiry regarding the above group, we thank you for your interest in Hyatt Place Edmonton/Downtown

Our downtown Edmonton hotel

Hyatt Place Edmonton/Downtown features 11-stories with 255 roomy guest rooms and suites conveniently located in the heart of Edmonton.

Our downtown Edmonton hotel will offer over 11,000 sq. ft. of meeting and events space, ideal for small or large corporate and executive meetings, conventions, training classes, group gatherings, wedding guests, social events or reunions. Our convenient location in downtown Edmonton will provide easy access to the area's best shopping and cultural favorites such as the Art Gallery of Alberta, Citadel Theatre, Francis Winspear Centre for music and the Commonwealth Stadium. Business travelers will enjoy a short walk to the Shaw Conference Centre, Alberta Treasury Branches and the CN Tower. **All Hyatt Place hotels are smoke-free.**

During your stay, a Host will happily assist you with < from our new Gallery Menu, Fresh 24/7, featuring our signature flatbreads, a Make It 2 option and delicious new sandwiches, greens, apps & more. Or you can enjoy specialty Starbucks® coffee, cocktails, premium beer & wine over friendly conversation at the Coffee to Cocktails bar. Also enjoy Free with your stay, the a.m. Kitchen Skillet™ always has plenty to choose from with hot breakfast items, fresh fruit and more.

This proposal serves as a quotation only. Please be advised that we will not be holding any accommodation or meeting space on your behalf. All rates contained here-in are valid until **October 14, 2016**. Should you wish to reserve space on a tentative basis we will request your advice as soon as possible to ensure availability



### ACCOMMODATION ROOM BLOCK

Date	07/20/17	07/21/17	07/22/17
Day of The Week	Thursday	Friday	Saturday
Run of House	200	200	200
<b>Total units</b>	<b>200</b>	<b>200</b>	<b>200</b>

### ACCOMMODATION ROOM Rates

Room	Single/Double Rate
Run of House	\$149.00

The above room rate is:

- per room per night
- subject to all applicable taxes and fees
- only applicable for above room request and within the mentioned period
- quoted in [Canadian Dollars](#)

### CONSESSIONS:

- Complimentary hot buffet breakfast
- Complimentary Wi-Fi
- Discounted heated onsite parking of \$15.00 per day
- Five Complimentary upgrades for VIP
- Five complimentary amenities for VIP arrival

### Children Accommodation Charge

Infant 0 – 11.99 years Maximum 2 are Free of Charge sharing parents room  
12 years or more a supplement of CAD 25.00 per person per night.

### **Guestroom Minimum**

Hotel is relying on, and Group agrees to provide, a minimum of 90% of contracted guest room nights. Group will contract **600** guest room nights and will be responsible for a minimum of **600** guest room nights. Should the Group fall below this amount, the Group will be responsible for the difference between the minimum guest room night of **600** and actualized guest room nights multiplied by the single guest room rate of **\$149.00** plus any applicable taxes. Any charges for no-shows or cancellations made within 24 hours of arrival will not apply towards guest room minimum.





### **Check-in and Check-out Time**

Hotel rooms are available for guest check-in after 15:00 hours. Earlier arrival requests are subject to 48 hours prior notice and subject to availability. According to the hotel's occupancy, Hyatt Place Edmonton/Downtown; reserves the right to charge one extra night for any pre-booked room.

Check-out time is 12:00 hours. Late check-out charges are as follows:

Until 1800 hours: 50% of the confirmed group rate (room only)

After 1800 hours: Full group rate

### **Free Policy and Complimentary**

1 complimentary single room for every 40 paying rooms with maximum of 2 rooms per group

### **Gold Passport Planner Rewards**

Hyatt is recognized throughout the world for hosting successful meetings and events. And now, there is another great reason to choose Hyatt.

Hyatt is excited to announce Hyatt Gold Passport Planner Rewards. This will be replacing the former Meeting Dividends program. With this new rewards program, planners will enjoy valuable benefits and recognition at Hyatt Hotels and Resorts, Hyatt Place and Hyatt Summerfield Suites worldwide.

Planners will earn one (1) bonus point for every eligible U.S. dollar spent (i.e., guestrooms, meeting room rental, banquets and in-house catering, etc.) on an event, up to 50,000 bonus points. Planners are able to split the points earned per qualifying meeting or event up to three ways to reward the co-workers and colleagues who helped the planner plan the event.

### **Confirmation and Deposit – For Groups rooms going to the master account.**

- Non-refundable Deposit of 25% of the total group is due for payment one week after signing the contract
- 40% of the total group payment is due 180 days prior to group arrival
- 25% of the total group payment is due 90 days prior to group arrival
- 10% of the total group payment along with the group rooming list 30 days prior to group arrival



## **Payment**

All payments should be made by either bank draft, bank transfer, authorized credit card or cash.

## **Accommodation Allocation**

Subject to the cancellation policy below, a review of the anticipated number of rooms required is to be advised by the Client at 180, 90 and 30 days prior to arrival. Final accommodation and the preliminary guest name list must be confirmed to the Hotel no later than 30 days prior to arrival. At 30 days any unallocated rooms will be considered cancelled and subject to the below cancellation fees. Furthermore, additional accommodation required is subject to availability.

## **Rooming List**

At 30 days prior to arrival the final guest name list is required.

## **Cancellation Policy**

In the event of cancellation, all deposits will be forfeited in addition to the following charges:

Accommodation –

### Initial deposit

25% of estimated total cost paid within 07 days of signing the group contract is non-refundable

### 180 days prior to arrival:

Full cancellation fees apply for all room nights cancelled within 14 days of arrival.

## **No Show Policy**

In Case of No Show the hotel reserves the right to charge 100% of full stay



**Contract**

A contract including terms, conditions and payment procedures will be sent to you, subject to your written confirmation.

I trust our offer meets with your requirements. I will be contacting you shortly to discuss further requirements.

In the meantime, should you require any further information, details as well as pictures for Hyatt Place Edmonton/Downtown, please visit our web page on [edmontondowntown.place.hyatt.com](http://edmontondowntown.place.hyatt.com)

Kind Regards,

**Rachel Macknee**  
**Sales Manager**

September 30, 2016

Jehovah's Witnesses' 2017 Regional Convention

Re: Lead ID: 4742

Dear Client:

Thank you for considering the University of Alberta as a possible venue for the **Jehovah's Witnesses' 2017 Regional Convention** taking place July 21-23, 2017. The University of Alberta Conference Services offers a variety of accommodation and meeting space suitable for any group. More than just a great location: we are surrounded by mature trees, gardens and parks; easy access to downtown and the west end and south side of the city and within walking distance to the historic Whyte Avenue, with its boutiques, restaurants, coffee shops and festivals.

I am pleased to submit the University of Alberta's proposal to host the delegates of the Jehovah's Witnesses' 2017 Regional Convention.



Our Hospitality team at the University of Alberta is committed to working with you to ensure your event is successful. If you have any questions or concerns please do not hesitate to contact me directly at 780-492-9300 or email [sheri.penner@ualberta.ca](mailto:sheri.penner@ualberta.ca). I have also attached a breakdown of our room types. Once again thank you for your interest in the University of Alberta.

Sincerely yours,



**Sheri Penner**

Guest Services Coordinator, Reservations



## Accommodations:

The Lister Center complex offers 1,025 traditional dormitory style rooms, whereas, our modern Schaffer Tower offers 400 single dormitory rooms each with a private bath. Our 20 Hotel-style guestrooms offer all the comforts of a hotel and are located just steps away from our meeting facilities. We are pleased to offer the follow rates to the delegates of the Canadian Open Data Summit.

◆ Traditional Single:	\$49.00
◆ Traditional Twins:	\$59.00
◆ Schaffer Single:	\$69.00
◆ Hotel Guestrooms:	\$109.00

Rates shown are for 2016, for budgetary purposes, plan a 5% increase/year. All room rates are quoted in Canadian funds and are subject to 4% tourism levy, 3% destination marketing fee (DMF) and 5% Goods and Services Tax (GST).



### Room Type: Hotel

#### Quantity

Queen Bed with Sofa Bed: 6

Queen Bed: 7

2 Double Beds: 7

Grand Total: **20**

#### Room Description

Rooms offer either a “queen” bed or two “double” sized beds. The sofa bed is a “double” size. Daily housekeeping is provided. High speed internet access is available. Televisions, telephones (free local calls) and clock radios are included. Rooms offer mini-fridge and Keurig coffee maker.

#### Floor Description

Floor includes laundry room (card operated laundry service) and vending machines, including one ice machine.

### Room Type: Schaffer

#### Quantity



Schaffer Single: 400

Room Description

Rooms offer one “single” sized bed and one work desk. Private washroom with shower. Linen and towel service is provided. High speed internet access is available.

Floor Description

Floor has shared kitchen and laundry room (card operated laundry service). Floor has shared lounges located at the end of each wing which feature cable television and telephones with free local calls.

**Room Type: Traditional**

Quantity

Traditional Single and Traditional Twin: 1025

Room Description

Rooms offer either one or two “single” sized beds. Washrooms are shared. Linen and towel service is provided.

Floor Description

Floor has shared service centre featuring cooking facilities and card operated laundry service. Floor has a centrally located shared lounge which features cable television and a telephone with free local calls. High speed internet access is available. Floor has three wings branching off the central area, each of which includes a communal washroom including shower facilities. There are 3 washrooms per floor; these consist of 3 shower stalls, 3 toilet cubicles and 3 sinks each.

**Reservation Process**

We will provide a reservation form for your delegates. Completed forms to be sent to our Groups department.

We are happy to offer the following room block bedrooms:

<b>Room Type</b>	<b>Thurs 07/20</b>	<b>Fri 07/21</b>	<b>Sat 07/22</b>
Hotel Guest Room	10	10	10
Schaffer Single Private Dormitory	200	200	200
Traditional Single Dormitory	250	250	250
Traditional Twin Dormitory	250	250	250



300 East Lapotac Blvd  
Enoch, Alberta  
[www.edmontonmarriott.com](http://www.edmontonmarriott.com)



September 30, 2016

Watch Tower, Bible and Tract Society of Canada

Dear Sir/Madam,

We are excited about the opportunity to host the **Jehovah's Witnesses' 2017 Regional Convention in July 2017**. Our associates look forward to welcoming you to our hotel. We know that you have many choices within the market, so thank you for considering us as the potential location of your upcoming event.

**ABOUT THE EDMONTON MARRIOTT AT RIVER CREE RESORT**

Expand your horizons at the four-star Edmonton Marriott at River Cree Resort. Our resort boasts 49 acres of property, which encompasses facilities such as a full casino, two NHL sized hockey rinks, and 249 luxury guest rooms and suites.

We are easily accessible near West Edmonton; only 20 minutes away from the Edmonton International Airport and a quick 6 minute drive from the famous West Edmonton Mall with a complimentary shuttle bus leaving every 30 minutes from the front doors of the Hotel or the front doors of the Casino. We also have plenty of space for your group to park conveniently with over 1,900 complimentary parking stalls.

With nearly 40,000 square feet of banquet space, the resort can accommodate up to 3,500 people at one time for your conference, board meeting or social event. We also feature a property-specific "Red Coat App" that can be installed on any smart phone and allows direct and immediate communication between our clients and their on-site contacts. In addition to our banquet facilities, the resort showcases three restaurants including a steakhouse, a pub and of course our Kitchen Buffet & Bistro which seats up to 300 people and is open from 6:00 AM to 1:00 AM daily.

The Marriott standard is to always provide an "Excellent" overall experience. We strive for excellence in everything that we do, and in doing that we offer you the guest a superior experience. Come visit us at the Edmonton Marriott and we will ensure you enjoy your stay.



You and your guests can feel confident in knowing that our impeccably trained associates are committed to providing a flawless event and this commitment extends from our Associates who first greet you to our General Manager, Renjith Vengalil.



Currently we can offer the following group room availability:

**ROOM BLOCK**

Date	Day	Standard Room	Total Rooms
07/20/2017	Thu	60	60
07/21/2017	Fri	60	60
07/22/2017	Sat	60	60

**OVERNIGHT ROOM RATES**

The Edmonton Marriott at River Cree Resort is pleased to provide you with your 2016 guestroom rates for your upcoming event.

Start Date	End Date	Room Type	Single	Double	Triple	Quad
07/20/2017	07/22/2017	Standard Room	\$159.00	\$159.00	\$179.00	\$199.00

⌘ Please Note: Sleeping rooms are per room, per night without applicable taxes

⌘ Room rates are non-commissionable

Hotel Room Rates are subject to a taxable marketing fee of 3%. Hotel Room Rates are also subject to applicable government and local taxes (currently 9%). Changes in taxes and fees implemented after booking will affect the total room price.



## **EDMONTON MARRIOTT EVENT PROCESS**

Sir/Madam, we take pride in ensuring all of our clients' enjoy extraordinary service. As you transition through the sales and event process with us, you will work with our team on finalizing your event. From first contact with your Sales Manager to your final billing process, our mission is to provide excellent overall service during the Sales phase, a smooth transition into the Planning phase, and for you to experience genuine & flawless service during the staging of your event.

As outlined below, the process is broken down into several phases. Please let us know at any time if there is anything we can do to ensure your event is an excellent one!

**Sales Phase:** Your experience and service with your Sales Manager in the initial stages of planning and confirming your event with the Edmonton Marriott at River Cree Resort

**Planning Phase:** Your experience with our Events team during the planning stage of your event process

**Event Phase:** Your experience with your Banquet Captain and the staff on the days of your event here at the hotel

**Billing Phase:** Your experience with our Accounting department in finalizing the payment/invoicing portion of your event

Thank you once again for considering the Edmonton Marriott at River Cree Resort, you can feel confident that our team will do everything possible to ensure you have a successful meeting and meet all of your event objectives.

## **MARRIOTT REWARDS**

Marriott created Marriott's Rewarding Events for hardworking planners everywhere — beginners and professionals alike. Earn points for your events and use them for items from our extensive [online catalogue](#).

Remember Marriott Rewards was voted the #1 rewards program in the world (6 consecutive years by Fortune Magazine) for a reason...simply said, IT IS THE BEST!



**DECISION DATE**

I am currently holding the outlined function space for your group and will continue to do so until December 30, 2016. At that time, should you wish to move ahead with your event I would be happy to supply you with an agreement for your review and approval.

I will contact you to see how your plans are progressing in regards to this event. In the meantime, please call me at 780-930-2630 with any questions.

Again, thank you for considering the **Edmonton Marriott at River Cree Resort**. We look forward to working with you and our future correspondence.

Kindest Regards,

---

Renée Chan Sales Manager

**Edmonton Marriott at River Cree Resort**

300 East Lapotac Blvd

Enoch, Alberta T7X 3Y3

Ph: 780-930-2630

Direct Fax: 780-930-2736

Email: [renee.chan@marriott.com](mailto:renee.chan@marriott.com)



in partnership with  
**EDMONTON TOURISM**



a proposal for  
Watchtower, Bible and Tract Society of Canada  
**July 20, 2017 to July 23, 2017**





September 28, 2016

**Thank you for considering Matrix Hotel as a potential host hotel for  
Jehovah’s Witness 2017 Regional Convention**

**Program Information**

---

Currently, our hotel has availability as per your requested dates and details are outlined below. All rates and information in this proposal will be valid until **12-01-2016**, until which I have the outlined space on a tentative hold. We will confirm the meeting space and the guestrooms once a signed contract and deposit has been returned to the hotel.

Name of Group: **Jehovah’s Witness 2017 Regional Convention**  
Dates: **July 20, 2017 to July 23, 2017**

**Accommodation**

---

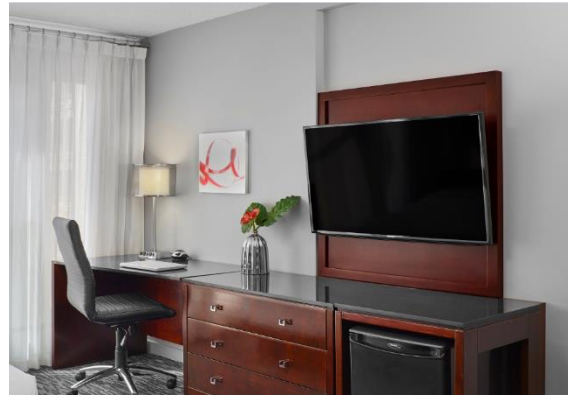
(MATR) Matrix Hotel, Edmonton				
Day	Date	Deluxe Rooms		Total Rooms
Thursday	07-20-17	100	\$155.00	100
Friday	07-21-17	100	\$155.00	100
Saturday	07-22-17	100	\$155.00	100

Room rates are net, non-commissionable and quoted in Canadian funds. Rates are subject to a 3-5% increase per annum. Rates are on a per room, per night basis (single or double occupancy). Additional occupants (maximum quadruple occupancy) are \$30.00 per person. Children under the age of 12 years, sharing with their parent(s), stay at no charge. Please note guestroom rates are subject to the 4% Tourism Levy, 3% Destination Marketing Fee & 5% GST.



**The following items are included in these rates at no extra charge, and reflect a value added component in excess of \$65.00:**

- + Complimentary Deluxe breakfast buffet
- + Complimentary wine tasting
- + Complimentary parking
- + Complimentary Wi-Fi in guest rooms and all public areas
- + In-room Keurig coffee & tea
- + Unlimited access to the Fitness Facility
- + 24-hour access to the Business Centre
- + Refreshment centre with refrigerator



## Guestrooms

We believe that comfort, luxury and great design should come standard with every room.

A stylish palette of silver, pewter and platinum hues is the backdrop for rich wood, sleek black granite, and textural art in every guest room. Comfortable pillow top mattresses are enveloped in fine, crisp white bed linens for a restful night's sleep or perhaps a rejuvenating cat nap. Sparkling, white bathrooms feature custom chrome and granite vanities, luxurious towels and spa quality bathrobes.

### Deluxe Guestrooms

These beautifully appointed guest rooms feature one king size or two double beds. Each guest room is appointed with a granite working desk and club chair for unwinding.

### Sterling Suites

Beautiful one bedroom suites offer spacious and soothing guest room space. A wet bar, separate living room and fireplace are also featured in these luxurious suites.

### Platinum Suites

These one bedroom suites with separate living room, offer a penthouse view of the city. The Platinum Suites also feature a fireplace, wet bar, oversized bathroom with jetted tub and separate body spray showers.

### Onyx Suite

Matrix Hotel's spectacular signature one bedroom suite features 857 square feet of luxury and amenities. The Onyx Suite offers a walk-out terrace with seating area for entertaining and relaxing.



*(Sterling Suite Living Space)*



*(ONYX Suite)*



### **A Modern, Lifestyle Hotel in the Heart of Edmonton**

Matrix Hotel provides a distinctive hospitality experience to travelers who appreciate great design in the heart of the city. The hotel is centrally located downtown between the business and government districts for the convenience of the corporate traveler. After the work day or for the leisure traveler; the Edmonton river valley is a short stroll away as are the many shops, restaurants, cafés, arts and theatre venues.

Matrix Hotel is naturally inspired, and was designed to be an environment where positive experiences are developed. The modern décor blends clean minimalist lines with sleek and textural natural stone and wood for a stunning and soothing atmosphere. Interesting objet d'arts and paintings punctuate warm hues of silver, pewter and platinum throughout the hotel's public spaces.

The Matrix Team is empowered to do what it takes to ensure every guest's experience is exceptional. Sincere, unscripted and genuine service is our trademark.

Matrix Hotel offers an unparalleled downtown Edmonton hotel experience.

### **Hotel Amenities**

---



Wildflower is a contemporary fine dining restaurant featuring "New Canadian Cuisine". This local favourite amongst the gourmands features wood fire grilling, creative presentation and quality wine selection with a focus on Canadian wines.

MZ Lounge is located on the MZ level of the hotel in our Hospitality Suite, where we offer our complimentary Evening Wine and Cheese Tasting, and is open from 4pm-11pm Sundays through Fridays and 12pm-11pm on Saturdays. We also invite you to visit MZ lounge for some tantalizing appetizers along with an innovative beverage - anything from your favorite beer to our interesting Matrix cocktail.



World famous for its fine coffee, refreshments, great people, first rate music and comfortable upbeat ambiance.

### **Business Center**

Located on the 2<sup>nd</sup> Floor, Twenty-four hour, key card access for registered guests to our Business Centre featuring Mac and PC computer stations with printing capability.

### **Fitness Center**

Located on the 3<sup>rd</sup> Floor, Key card access to the Fitness Centre featuring professional-grade aerobic equipment, free-weights, mats, exercise balls and other amenities. Open daily from 05:00 to 23:00.

### **Transportation**

If travelling from the Edmonton International Airport, we recommend your delegates choose from renting a car, taxi service or utilizing the Airport Shuttle Service. Directions can be provided upon request. Corona LRT (Light Rail Transit) Station is just steps away from Matrix Hotel, ensuring ease of getting around the city. Many ETS (Edmonton Transit System) bus routes that stop outside the hotel are another option.



### Local Area

Centrally located in the heart of downtown Edmonton, Matrix Hotel is ideally situated for accessing business and leisure attractions. Some of the city's best shopping, restaurants and nightlife are within walking distance of the hotel. The Legislative Assembly of Alberta, government and corporate districts and Shaw Conference Centre are within minutes via walking, vehicle or light rail transit.

### Meetings & Events

Matrix Hotel offers over 8,500 square feet of meeting space, offers several beautifully appointed modern rooms, well-suited to everything from conferences, meetings, luncheons, private dinners and cocktail receptions to high profile media events, festive holiday parties and chic weddings. Our approachable and experienced Catering and Banquet team deliver attentive, professional service and sensational meals. All rooms are equipped with complimentary high-speed internet and Wi-Fi, telephone and built in projection screen.



Please note that all food & beverage services are solely provided by the Hotel and all function related charges are subject to a 17% service charge and 5% GST. We are not currently protecting any space on your behalf.

We look forward to the opportunity to work with you on this important event.  
Our goal is to exceed your expectations!

Our quality of luxury accommodation, spacious facilities and professional service will provide a seamless process for you and your delegates. Should you have any questions please contact me at 780-420-4955 or [cmakowichuk@matrixedmonton.com](mailto:cmakowichuk@matrixedmonton.com). I look forward hearing from you in the near future.

Sincerely,

Christie Makowichuk  
Sales Manager





September 27, 2016

National Convention Manager and Representatives

Watch Tower Bible and Tract Society of Canada

Dear Organizing Committee,

**Re: Lead #4742 – 2017 Jehovah’s Witness Regional Convention**

Thank you for the opportunity to provide rates and information for the above event which will take place in Edmonton over the weekend of July 21 – 23, 2017.

The following agreement outlines the terms and conditions of this booking. Please review this agreement in its entirety and if agreeable, kindly sign one copy and return to my attention.

**GUESTROOM BLOCK**

Rates are based on single or double occupancy. Please note we do not have any cots.

<b>Arrival Date:</b>	<b>Friday, July 21, 2017</b>
<b>Departure Date:</b>	<b>Sunday, July 23, 2017</b>
<b>Total Rooms :</b>	<b>75 rooms are available (50 room with 2 queen beds 10 rooms with 1 queen bed 15 rooms with 1 king bed)</b>

**ROOM RATES:**

<b><u>Room Type</u></b>	<b><u>Room Rates</u></b>
<b>Queen (one or two queen size beds)</b>	<b>\$111.00 room/night plus taxes</b>
<b>King (one king size bed)</b>	<b>\$121.00 room/night plus</b>

Rates:

- are net non-commissionable
- are based on single/double occupancy (children 17 years & under stay free when sharing room with parents)
- apply per room, per night on accommodation only
- are subject to applicable taxes (4% AB Tourism Levy, 3.27% Destination Marketing Fee and 5% GST)
- are quoted in Canadian funds
- extra \$10.00 will apply for each additional adult plus taxes/fees for triple or quad occupancy
- additional room types are available & rates vary accordingly
- **all rates include daily Hot Breakfast Buffet, free parking and free wireless high speed internet**

**PRE AND POST RATES:**

Room rates for the convention will be offered two (2) days prior and two days following the event (subject to availability) but will not be included in the group's room block allotment.

**RESERVATION METHOD AND CUT-OFF DATE:**

It is our understanding that reservations and payment will be arranged by each individual.

The **Quality Inn West Edmonton** agrees to hold the full block of guest rooms until the cut-off date of July 7, 2017 which is two weeks prior to arrival. Any rooms left in your group's room block after the cut-off date will be released for general sale unless the hotel receives a written commitment for the number of rooms that will be required as per this agreement with the hotel.

**PAYMENT:**

Each guest will be responsible for making their own room reservation and for their own payment. A credit card number is required at the time the reservation is made. Upon arrival a credit card with matching photo identification is required. The credit card number will be recorded and preauthorized at time of check-in. In absence of a credit card, full payment + \$250 deposit is collected with a debit card.

The **Quality Inn West Edmonton** does not accept cash unless a credit card is on file.

**GUARANTEED AND CANCELLED RESERVATIONS:**

For group reservations, the **Quality Inn West Edmonton** has a 30 day cancellation policy.

Individual reservations may be cancelled up to 24 hours (before 4 pm) the day prior to arrival. If reservations are cancelled with less than **24 hours'** notice, the guest will be charged for the first night's room and tax charges on the credit card on file. Guests should note and retain the cancellation number quoted to them by the Reservations Agent at the time the cancellation is made.

**No Shows** - Should a guest not check into the hotel on their scheduled date of arrival without having cancelled their reservations at least 24 hours in advance (by 4 pm day prior to arrival), a fee equal to one night's accommodation room and tax fees will be charged to the credit card on file.

**CHECK-IN/CHECK-OUT TIMES:**

Check-in commences after 4:00 pm. Check-out is 11:00 am. Arrangements can be made for the luggage storage should anyone require storage facilities as a means of not incurring any late departure charges that may be applicable.

**PARKING**

Complimentary surface parking is available.

**FORCE MAJEURE:**

The execution of the Agreement by either party is subject to act of God, war, terrorism, government regulations, disaster, strikes, civil disorder, curtailment of transportation facilities (which prohibit 25% or more of the people from participating in your event), or other emergency making it illegal or impossible to provide the facilities or to hold the program. It is provided that this Agreement may be terminated for any one or more of such reasons by written notice from one party to the other.

**INDEMNIFICATION:**

The **Quality Inn West Edmonton** employees, family members and owners shall be forever held harmless from and against, any and all liability or claim of liability for any personal injury or property damage.

In addition, the **Quality Inn West Edmonton** warrants and represents that, as a place of "public accommodation"; it is in compliance with all federal, provincial, and local fire safety and health code laws and ordinances in force at the time of the event.

**ACCEPTANCE:**

When signed by the authorized representatives of both parties, this agreement will constitute as a binding agreement between **Watch Tower, Bible and Tract Society of Canada** and the **Quality Inn West Edmonton**. Any changes to this agreement must be noted in writing and signed by both parties.

To confirm this booking on a definite basis, **please sign and return one copy of this Agreement prior to October 31, 2016.**

If I may be of further assistance or should you have any questions or concerns, please contact me directly at 780 484-1475, or by e-mail at [sales.qie@royahotelgroup.ca](mailto:sales.qie@royahotelgroup.ca). Further information can also be obtained via the internet at [www.qualityinnwestharvest.com](http://www.qualityinnwestharvest.com)

We look forward to the possibility of hosting this group!

**QUALITY INN WEST EDMONTON**  
Vivian Basaraba  
Director of Sales & Catering

**WATCH TOWER, BIBLE and**  
**TRACT SOCIETY OF CANADA**

\_\_\_\_\_  
Signature

\_\_\_\_\_  
Signature

\_\_\_\_\_  
Date

\_\_\_\_\_  
Date

**\*\* We are located 9.5 km away from downtown Edmonton and  
only 18 km away from Rexall Place.**



# CARING

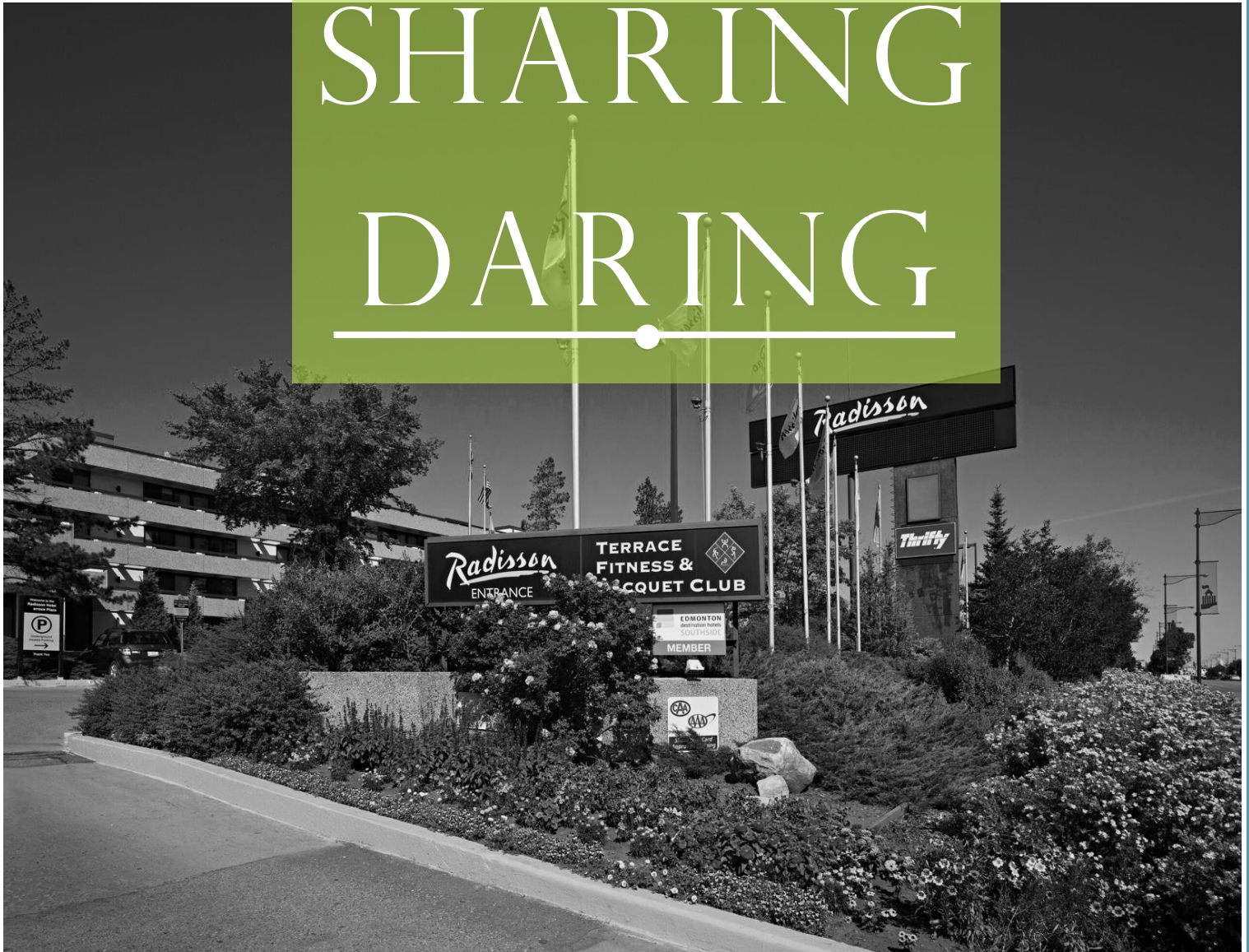


Proud Recipient of the  
2015 President's Award

30 September 2016

# SHARING

# DARING



Proposal Presented To: Edmonton Tourism  
on behalf of:

**Watch Tower, Bible and Tract Society of  
Canada**

National Convention Manager and  
Representatives

Proposal Presented By:

Estelle Millaud

Sales Manager

**Radisson Hotel Edmonton South**

4440 Gateway Boulevard

Edmonton, AB T6H 5C2

Tel: 780-431-5819

Email: [emillaud@silverbirchhotels.com](mailto:emillaud@silverbirchhotels.com)



## Thank you for reaching out to us for your event. Get ready to experience South Edmonton's Premier Hotel.

Radisson<sup>®</sup> is synonymous with outstanding levels of service and comfort delivered with utmost style. And today, we deliver even more to make sure we maintain our position at the forefront of the hospitality industry now and in the future.

Our hotels are service driven, responsible, socially, and locally connected and demonstrate a modern friendly attitude in everything we do. Our aim is to deliver our outstanding *Yes I Can!*<sup>SM</sup> service, comfort and style where you need us. To learn more about Radisson service and our 2015 President's Award for the **best customer service**, please visit <http://www.meetingscanada.com/radisson-hotel-edmonton-south-wins-guest-service-award/>

The Radisson Hotel Edmonton South is ideally suited for business travelers, large meetings, sports teams, and leisure guests with complimentary Wi-Fi and the state-of-the-art SilverBirch Conference Centre in addition to more than 30,000 square feet of flexible event space.

Our hotel's convenient location makes it easy for you to reach transit hubs such as the Edmonton International Airport, and the Southgate LRT Station. With access to major roads, you can reach several destinations with ease like the Valley Zoo, the Royal Alberta Museum, the Edmonton Research Park, Nisku businesses, the Edmonton River Valley which is the largest urban parkland in North America, and shopping destinations such as the Southgate Mall and West Edmonton Mall.

### Radisson Hotel Edmonton South Highlights:

- 235 Spacious Guestrooms– the largest rooms on the Southside
- High speed wireless internet connection
- Complimentary local and access calls
- Ample complimentary surface and *heated* underground parking
- Club Carlson Rewards Program – for travelers *and for* planners
- The largest fitness center in a hotel at 23,000 square feet including an indoor running track, a saltwater swimming pool, a steam room, a whirlpool, a sauna, and spa services
- Complimentary shuttle service to West Edmonton Mall
- In-room dining and two on-site restaurants including our Atrium Café, famous for its delicious Saturday Night Prime Rib and Seafood Buffet and its delectable Sunday Brunch Pet-friendly and non-smoking property

## Jehovah's Witness 2017 Regional Convention | July 20, 2017 – July 23, 2017

### Guestroom Requirements

Based on your needs, I recommend the following guestroom types:

#### **Signature Room**

All Signature Class rooms feature one or two queen beds, or one king bed with a pullout couch, a large working desk with an ergonomic chair and high speed wireless internet access, a 42" LG HD television, a coffee maker, an AM/FM clock radio, a hair dryer, a cordless phone with electronic voicemail, an iron and iron board, and a mini fridge



#### **Deluxe Room**

All Deluxe Class rooms feature one king bed with a pullout couch, a large working desk with an ergonomic chair and high speed wireless internet access, a 42" LG HD television, the daily newspaper, a coffee maker, an AM/FM clock radio, a hair dryer, a cordless phone with electronic voicemail, a mini fridge and microwave, and upgraded amenities in the bathroom





## Jehovah's Witness 2017 Regional Convention | July 20, 2017 – July 23, 2017

For VIP guests, consider upgrading to the following guestroom types:

**Business Class** Business Class rooms feature one king bed with a pullout couch, a large working desk with an ergonomic chair and high speed wireless internet access, an in-room laptop safe, a 42" LG HD television, the daily newspaper, a coffee maker, an iHome clock radio with iPod/MP3 connection, a hair dryer, a cordless phone with electronic voicemail, an iron and iron board, a mini fridge and microwave, upgraded amenities in the bathroom, turndown service, breakfast included, 2 bottles of water refreshed daily, and 2 drink vouchers per evening. Early check-in service is provided based on availability

**Executive Suite** Executive Suites feature one queen bed in a separate room with a pullout couch, a boardroom table with six ergonomic chairs and high speed wireless internet access, double outside balconies, a 42" LG HD television, a coffee maker, an iHome clock radio with iPod/MP3 connection, a hair dryer, a cordless phone with electronic voicemail, an iron and iron board, a mini fridge and microwave, and upgraded amenities in the bathroom including bathrobes and slippers





The following blocks of rooms are available to your group at the following group rates:

	Signature 1 or 2 Queen Beds or 1 King bed + Pullout couch	Deluxe 1 King Bed + Pullout	Business Class 1 King Bed
09/11/2017			
09/12/2017			Max. 10 rooms per night
09/13/2017	Max 144 rooms per night	Max. 61 rooms per night	
09/14/2017			

Room	Room rate (Single or double occupancy rate)
Signature	\$124.00
Deluxe	\$134.00
Business Class	\$174.00

The above rates are per night, non-commissionable and subject to applicable taxes (5% GST, 4% Tourism Levy and 3% DMF).

This guest room rate will include breakfast for up to 2 registered guests per room (Additional \$10 per guest in the room). The breakfast will consist of access to our daily hot breakfast buffet in the Atrium Restaurant. All guests will be given vouchers at check-in to provide to the server in the restaurant; it is the guests' responsibility to provide the voucher to the server in order to receive the complimentary breakfast. The vouchers are not eligible to our weekly Sunday brunch (served from 9:30am-2pm every Sunday).

#### **Value Added**

The Radisson Hotel Edmonton South is pleased to offer the following to enhance your experience (*select the ones that apply*):

- 1 Complimentary Executive Suite for the duration of your event (minimum of 50 rooms picked up)
- One (1) complimentary upgrade to be used at your discretion for the duration of your event.
- One (1) Complimentary pre-planning meeting to be hosted at hotel

## **Deposit and Cancellation Policy**

### **Deposit Process Overview – Negotiable**

An authorized credit card for all charges, with Initial Deposit of 20% will be taken at time of booking, followed by payment equal of 50% of the estimated charges thirty (30) days prior to the start of the event with the remaining final estimated charges pre-authorized 72 hours before the function. The Hotel's **Credit Card Authorization Form** must be filled out & submitted to guarantee the booking.

### **Cancellation Process Overview – Negotiable**

<b>Number of Months prior to Arrival</b>	<b>Cancellation Fee</b>
6 – 12 (180 days or more)	25% of Gross Revenue *
3 – 6 (90 days or more)	50% of Gross Revenue *
Less than 3 (less than 90 days)	75% of Gross Revenue *
Less than 30 days	100% of Gross Revenue *

\* Gross Revenue is equal to anticipated revenue derived from guestrooms, food and beverage, meeting room and ancillary enterprises if the event was held as scheduled.

- Should the Client re-book a cancelled event within 30 days to actualize within the following 12-month period, 50% of the cancellation fee would be applied to the rescheduled event.
- If the Hotel can re-book the space or guest rooms that is reasonably comparable in revenue to another client, the cancellation fee would be refunded.

### **Status Match for Club Carlson**

Status Match is available for any client that is a part of a different loyalty program, and looking to join Club Carlson without requiring the standard qualifying nights and stays to reach their current loyalty status. If you are already an elite member, with Status Match there is no need to start over when you join our program.

#### **Who is Eligible?**

Anyone with a proven membership from another hotel loyalty program to which Club Carlson has chosen to match.

#### **How does it work?**

Complete a simple form – ask your hotel representative – and email Member Services directly at [statusmatch@carlsonrezidor.com](mailto:statusmatch@carlsonrezidor.com).

## Carlson Club for Planners



You can earn valuable rewards for booking your next meeting, event or convention. Club Carlson for Planners is a unique hotel rewards program exclusively for meeting and event planners. Whether you're planning large or small corporate events, or you're a special events planner arranging dinners and weddings, you can earn points with Club Carlson for Planners when you book your event at more than 1,000 participating Carlson hotels worldwide.

### **Earning points:**

- Earn 5 Gold Points per USD/Euro spent on total qualifying event purchases at any participating Carlson hotel. This includes any combination of meeting room, hotel room, or food and beverage expenses charged to the master bill.
- Your event attendees are not required to participate in Club Carlson for you to earn points.
- There is no cap on the earning potential, everything is based on final event revenue(s)

## Radisson Hotel Carbon Meetings



At the Radisson Hotel Edmonton South we take sustainability seriously and the impact our actions and events have on it. We currently have programs in place to help in our own small way:

- Club Carlson is the **FIRST hotel loyalty program** to commit to a global meetings and events **carbon offsetting initiative**
- Members can book meetings and events globally knowing that carbon credits will be automatically purchased to offset the estimated carbon footprint, at no cost to the planner or client.
- Club Carlson has partnered with Carbon Footprint to purchase these carbon credits. Each ton of carbon will be offset with investments in renewable energy in India, plus the planting of one tree in the Great Rift Valley in Kenya.



## Transportation



For your transportation needs, Skyshuttle provides the ultimate transportation solution to and from Edmonton's International Airport. Skyshuttle offers spacious and comfortable vehicles, with ample room for groups or families, as well as all luggage and travel necessities.

Please phone 780-465-8515 to book your trip or visit [www.edmontonskyshuttle.com](http://www.edmontonskyshuttle.com)

## Additional Benefits at the Radisson Edmonton Hotel

- Business Centre located in lobby of hotel
- Refrigerators available in all guestrooms
- Microwaves available upon request (if not already included in guestroom)
- Iron and ironing board in all guestrooms
- Dry cleaning service available (including a 24-hour service option)
- ATM on site
- Laundry coin machine access available to all guests
- 24-hour Front Desk operations

## Discover Edmonton



## Shopping

- Southgate Centre –<https://www.southgatecentre.com/info/mall-hours-directions/> 2.3 km (4 minutes by car from hotel)
- South Edmonton Common - <http://www.southedmontoncommon.com/directory/> - 4.5 km from hotel
- West Edmonton Mall – [www.wem.ca](http://www.wem.ca) – **a complimentary shuttle to and from West Edmonton Mall is provided by the hotel.**

**Distance from Edmonton International Airport to Radisson Edmonton South:** 14.6 miles or 23.49 km and approximately 21 minutes without traffic.

To estimate Taxi cab fares and distance information for other destinations, please use <https://www.taxifarefinder.com/main.php?city=Edmonton> for ease. Additional points of interest in Edmonton and the surrounding area are below:





# DISCOVER EDMONTON



**Close to you...**


Hexagon Boardgame Café



10123 Whyte Avenue  
780-757-3105  
www.thehexcafe.com

**Close to you...**

Escape City



5916 104 St NW  
780-761-2489  
www.escapecity.ca

**West Edmonton Mall**

Largest Mall in North America



8882 170 Street  
780-444-5313  
780-444-5308  
(For Groups of 15 or more)  
www.wem.ca

**West Edmonton Mall**

Professor Wem's Adventure Golf



8882 170 Street  
780-444-5300  
780-444-5308  
(For Groups of 15 or more)  
www.wem.ca

**West Edmonton Mall**

World Waterpark



8882 170 Street  
780-444-5313  
780-444-5308  
(For Groups of 15 or more)  
www.wem.ca

**West Edmonton Mall**

Galaxyland Amusement Park




8882 170 Street  
780-444-5300  
780-444-5308  
(For Groups of 15 or more)  
www.wem.ca

Radisson Hotel Edmonton South  
4440 Gateway Boulevard NW  
Edmonton, AB T6H 5C2

For more activity ideas visit  
[www.exploredmonton.com /things-to-do/all](http://www.exploredmonton.com/things-to-do/all)

**EXPLORE EDMONTON**

START



Prairie Gardens and Adventure Farm

780-921-2272  
[www.prairiegardens.org](http://www.prairiegardens.org)

Corn Mazes • Campfires • Garden Center • Petting Farm • Gem Mine • Farm Festivals 56311 Lily Lake Road, Bon Accord

**Edmonton's History**

Fort Edmonton Park



7000 143 Street  
780-442-5311  
[www.fortedmontonpark.ca](http://www.fortedmontonpark.ca)

Telus World of Science



11211 142 Street NW  
780-451-3344  
[www.telusworldofscienceedmonton.com](http://www.telusworldofscienceedmonton.com)

**Edmonton's Natural Beauty**

River Valley Adventure Co.



9735 Grierson Hill NW  
1-877-433-7347  
[www.rivervalleyadventure.com](http://www.rivervalleyadventure.com)

## Planning a Future Event or Meeting at the Radisson Edmonton South

### **SilverBirch Conference Centres® - SBCC**

Innovative. Productive. Inspiring.



We just put the ALL\* into INCLUSIVE for Canadian meetings & conferences - \* {all except the beach}

#### **ALL EASY**

You're here to get stuff done, not to worry about what AV equipment to rent, what food to order, or whether high-speed wireless Internet is included (it is!). At SilverBirch Conference Centres®, it's easy because it's all included. Our distraction free and ergonomically advanced conference facilities with leading edge technology, personalized service and health-inspired innovative cuisine guarantee a premier meeting experience with meaningful results.

#### **ALL AFFORDABLE**

Going 'a la carte' may seem inexpensive at first but can quickly add up to a number that might surprise you. At SilverBirch Conference Centres®, our all-inclusive meeting packages deliver much better value and make your meeting planning stress-free, convenient, and easy to budget. Say goodbye to planning headaches and surprises.

#### **ALL YOU CAN EAT & DRINK**

Enjoy unlimited any-time access to our Connections Café®, where you can enjoy FREE wireless internet and all day access to a selection of inspiring morning and afternoon refreshments featuring espresso machines, an incredible assortment of homemade, small indulgences, smoothie shots, fresh fruit and vegetables, pastries, and healthy treats - all at no extra cost!

*Did you know?* We have a newly renovated Jubilee Ballroom that can host over 500 people for a function with dinner and dance. Are you looking to host a smaller event? We have over 10 different banquet spaces for you to choose from depending on your needs.

ARE YOU CONVINCED? CHOOSE South Edmonton's Premier Hotel: Radisson Edmonton south

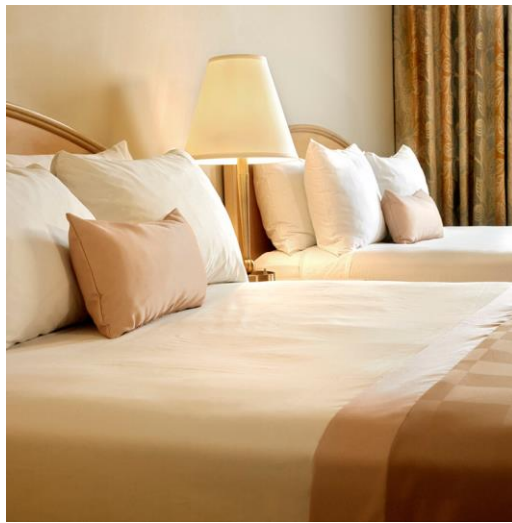
Enjoy Genuine Hospitality and our distinctive "Yes I Can" Service during your stay. At the Radisson, we strive to achieve 100% guest satisfaction, one guest at a time. For superb amenities, value, and convenience, join us at the Radisson Hotel Edmonton South.

Should you wish to view our facility it would be my pleasure to provide you with a site inspection at your convenience. I also invite you to visit our website at [www.radisson.com/Edmontonca](http://www.radisson.com/Edmontonca). If you have any questions or further requirements, please do not hesitate to contact me directly at 780-431-5819 or via email [emillaud@silverbirchhotels.com](mailto:emillaud@silverbirchhotels.com).

Sincerely,

Estelle Millaud  
Sales Manager





# RAMADA<sup>®</sup>

EDMONTON HOTEL &  
CONFERENCE CENTRE

Proposal for:

Jehovah's Witness 2017 Regional Convention



Thank you for considering The Ramada Edmonton Hotel and Conference Centre for the Jehovah's Witness Regional Convention in July 2017.

Edmonton's largest hotel and conference centre, The Ramada Edmonton Hotel & Conference is located at 11834 Kingsway Avenue NW in Edmonton, Alberta. Our property is located seven minutes from downtown and the new Ice District. It's a quick drive from our hotel to many of the city's top attractions like the TELUS World of Science, Kingsway Garden Mall and West Edmonton Mall. We are just 5 minutes away from NAIT.

#### Hotel Contact information

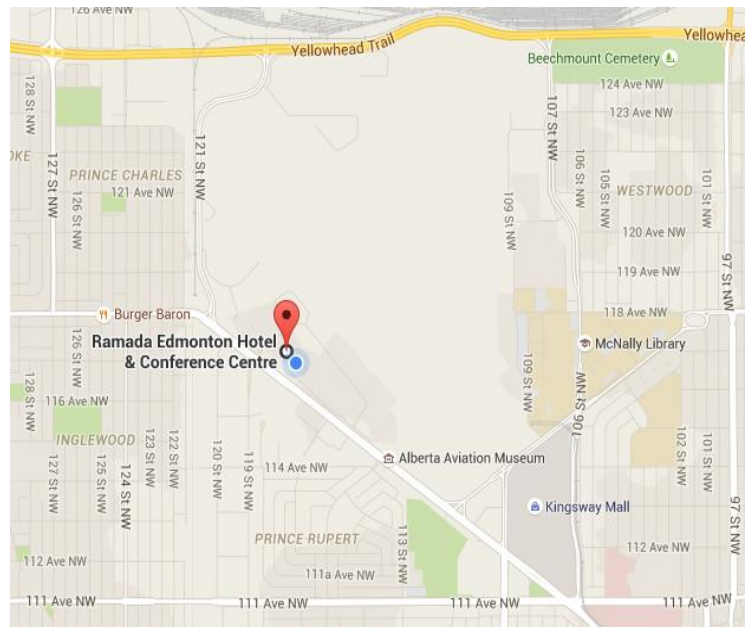
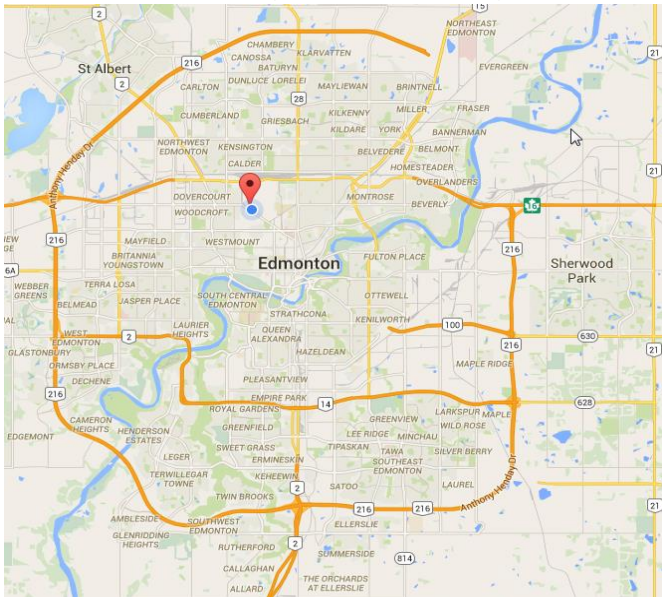
Front Desk: 780-454-5454

Sales and Catering: 780-453-7343

Fax: 780-453-7360

Web: [www.ramadaedmonton.com](http://www.ramadaedmonton.com)

Below is a Google map outlining our location.



#### Airport Access

The Ramada Edmonton Hotel is located 36 km away from the Edmonton International Airport (YEG). It is up to a 45 minute drive, dependent on traffic.

#### Local Transit

The Ramada Edmonton Hotel is only 1.7 km away from it's closest lightrail transit centre – the NAIT LRT Station. At this station you can connect to travel to the North East side of Edmonton (Commonwealth Stadium, Rexall Place and Northlands/Expo Centre), Downtown Edmonton (Government buildings, local arts/theatres, library, shopping and Ice District) as well as South Edmonton.

## Features and Amenities

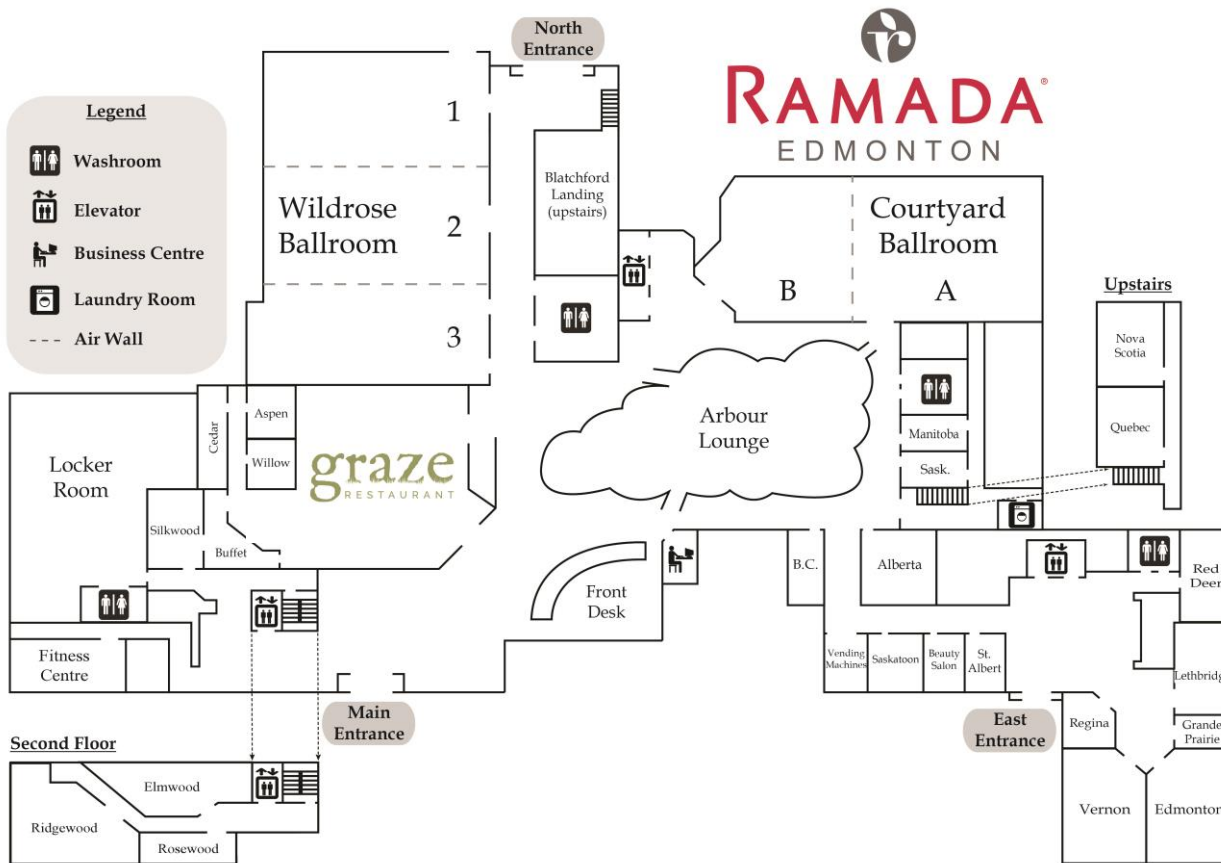
260 Guest Rooms  
 Complimentary vehicle/bus parking for up to 800 vehicles  
 Complimentary high speed wireless internet throughout hotel

Complimentary 24 Hour access Business Centre  
 Complimentary 24 Hour Fitness Centre  
 Pet friendly facility  
 Complimentary laundry room facilities

Cable TV and in-room movies  
 Complimentary in-room coffee  
 Telephone with private voicemail access  
 Complimentary Local Calls

Graze Restaurant featuring “farm to table” concept  
 Arbour Lounge  
 Beauty Salon – “Studio & Company”

## Hotel Map



## Accommodations

The Ramada Hotel & Conference Centre operates on an inventory of 260 guest rooms. In this inventory we have a number of different room types to ensure all of our guests are comfortable, located in two different towers.

Standard – these rooms have either one or two Queen-size beds and are equipped with all of the comforts of home. Our Standard Rooms are located in both the North and East Towers. The East Tower rooms feature private balconies.

Business Class – this room type is available with one or two Queen-size beds or a single King bed. They also feature a mini-fridge and microwave. All of our Deluxe Rooms are located in our East Tower with private balconies.

Executive Suite – our Suites are available with either one King-size bed or two Queen-size beds.

Parlour Suite – consists of a guestroom with one King bed attached to a living room space that includes a boardroom table, couch, chair, mini-fridge and microwave. These are located in our East Tower and therefore have private balconies.

## Room Block and Rates

The room block outlined below is available to hold for your attendees for the following dates:

July 21-23, 2017

### Ramada

Room Type	Rate	Number of rooms available for group
Standard One Queen	\$109.00	40
Standard Two Queens	\$118.00	90
Business Class	\$128.00	55
Suite – One King	\$149.00	5
Suite – Two Queens	\$149.00	7
Total Rooms		197/night

- Rates are subject to 5% GST, 4% Hotel Tax, and 3% Destination Marketing Fee for a total of 12% taxes. Prevailing taxes and fees are subject to change.
- Above rates include hot Breakfast Buffet in our Graze Restaurant, which is available from 6:30am – 9:30am daily.
- Above rates are based on Double occupancy. Each extra person sharing a room above two (2) people will be charged an additional \$10.00 per night.

## Nova Kingsway

Room Type	Rate	Number of rooms available for group
Standard One Queen	\$109.00	25
Standard Two Queens	\$118.00	15
Kitchenette	\$149.00	25
Total Rooms		65/night

- Rates are subject to 5% GST, 4% Hotel Tax, and 3% Destination Marketing Fee for a total of 12% taxes. Prevailing taxes and fees are subject to change.
- Above rates do not include Breakfast.
- Above rates are based on Double occupancy. Each extra person sharing a room above two (2) people will be charged an additional \$10.00 per night.

### Summary of Incentives & Concessions

- One per 30 complimentary rooms ratio – Cumulative
- Extended Rates: 3 days pre and post
- Complimentary WIFI throughout Hotel
- Complimentary Parking for all guests

We sincerely appreciate your interest in the Ramada Edmonton Hotel and Conference Centre & Nova Kingsway. If there is anything further that we can do to assist with the decision making process we'd welcome the opportunity to discuss it with you. We hope to work with you soon.

Sincerely,

Christina Fedorak  
Catering Manager  
780-453-7356

[Christina\\_f@ramadaedmonton.com](mailto:Christina_f@ramadaedmonton.com)



R  
RENAISSANCE®  
EDMONTON AIRPORT HOTEL



Renaissance Edmonton Airport Hotel  
4236-36 Street | Edmonton International Airport,  
AB T9E 0V4

**September 30, 2016**

Dear Valued Guest

Thank you for considering the *Renaissance Edmonton Airport Hotel* for your upcoming **Jehovah's Witness 2017 Regional Convention**. Recently granted the *AAA Four Diamond Award*, we are confident that our team of ambassadors will provide you and your guests with a unique experience during your time at our property. Explore meetings and events like never before at Renaissance Hotels with the expertise and business services that only Marriott<sup>®</sup> can offer and earn Marriott Rewards<sup>®</sup> Points every time!

In addition, *R.E.N. Meetings* enhances your experience with:

**R: RENAISSANCE'S SIGNATURE SENSORY MEETING SPACES**

Meeting spaces are designed to inspire creativity and interaction so your attendees feel motivated from the moment they arrive.

**E: ENTERTAINING NETWORKING EVENTS WITH RENAISSANCE PRESENTS**

The meeting day may be over, but the real fun is just beginning. Invite guests to mingle, network and relax at our buzzing lobby bar or create a customized RLife LIVE event for large groups.

**N: NAVIGATOR LOCAL EXPERTS**

Our on-site Navigators are the modern hotel concierge. They understand the pulse of the city and help with any off-site excursions— from dinner recommendations to packaging a tour of local hubs.

**MEETINGS IMAGINED- PEOPLE INSPIRED. MARRIOTT DELIVERED**

Your meeting is about more than just tables and chairs. That's why we start with people, understand their meeting purpose, and deliver not just a meeting but an experience. Let's imagine the possibilities.

**ROOM BLOCK**

Date	Day	Standard	Total Rooms
07/21/2017-07/23/2017	-	50 per night	100

**OVERNIGHT ROOM RATES**

Start Date	End Date	Room Type	Rate
07/21/2017	07/23/2017	Standard	\$169.00

- 
- 
- *Sleeping rooms are per room, per night and are based on single or double occupancy.*
- *Room rates are non-commissionable.*
- *Quoted room rates are valid for 30 days from proposal date and are subject to change after this date.*

These rates are net of taxes. Hotel's room rates are subject to applicable taxes and fees in effect at the time of check-in (currently 4% Occupancy, 5% GST and 3% Destination Marketing Fee).

## **AMENITIES AT THE RENAISSANCE**

- Attached Directly to the Edmonton International Airport
- Private, Secure Parking Lot [located directly in front of hotel's main entrance]
- Fitness Centre, Swimming Pool, Whirlpool and Sauna
- 24 Hour Business Centre
- In-Room Dining
- HALO Bar & Bistro
- Full-Service Starbucks
- On-Site Local Navigators
- RLife LIVE and Fitness Programs
- Customized/Themed Breaks

Thank you again for your consideration of our hotel and I hope to have the opportunity to work with you on this program. Should you wish to move forward with your event at the Renaissance, I would be happy to confirm your requirements and supply you with a Sales Agreement. Please do not hesitate to contact me at **(780) 224.9153** or **Shelby.Zukowski@marriott.com** if you have any questions on the information in this proposal.

Warmest Regards,  
Shelby

**SHELBY ZUKOWSKI** | Sales Manager

Renaissance Edmonton Airport Hotel | 4236-36 Street | Edmonton International Airport, AB T9E 0V4T:  
780.224.9153 | F: 780.488.6372 **Renaissance Hotels**. Live Life to Discover.

Monday, October 03, 2016

**RE: JEHOVAH'S WITNESSES' 2017 REGIONAL CONVENTION; July 20<sup>th</sup> – 23<sup>rd</sup>, 2017**

Dear Client;

Thank you for your interest in the **Sawridge Inn and Conference Centre Edmonton South**. We look forward to the opportunity of being a host hotel for the JEHOVAH'S WITNESSES' 2017 REGIONAL CONVENTION should Edmonton Alberta be selected as host city. Currently we have space available for your preferred dates of July 20<sup>th</sup> to 23<sup>rd</sup>, 2017.

First Nation's owned Sawridge Inn and Conference Centre Edmonton South is a full service hotel conveniently located in the heart of the South Edmonton business district, with immediate access to 2 of Edmonton's arterial roads positioning the property 20 minutes from the Edmonton International Airport and a shorter drive to key facilities and attractions such as; Northlands Park, Rogers Place, University of Alberta, Edmonton's River Valley, Old Strathcona, in addition to a wide variety of services, shops, big-box stores, restaurants and much more in the immediate area.

**Sawridge Inn and Conference Centre Edmonton South** features 135 spacious, quiet and comfortable guest rooms furnished with 2 queen size or 1 king size exclusive signature Dreamer's Wanted Luxury beds. In room amenities include all natural Mother Earth Essentials locally made bath products. Creations Dining Room is our full service restaurant that serves a hearty Breakfast Buffet from 6:30 am to 10 am daily; we also have full choice menus for breakfast, lunch and dinner as well as all day in-room dining. All guestroom rates include complimentary parking, wireless internet access, access to the 24 hour fitness centre, 24 hour guest laundry and business centre access.

Based on your requirements **The Sawridge Inn and Conference Centre Edmonton South** will offer the following for your event:

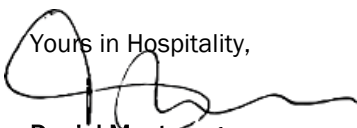
ROOM TYPE	JULY 21	JULY 22	JULY 23	RATE
<b>1 KING BED</b>	55	55	55	<b>\$105</b>
<b>2 QUEEN BEDS</b>	50	50	50	<b>\$105</b>
<b>TOTAL</b>	105	105	105	

The above rates are:

1. Inclusive of a full hot buffet breakfast for up to 2 people over the age of 18
2. **For accommodation based on single or double occupancy** – additional person over the age of 18 is an additional \$20 plus tax each night
3. Quoted in Canadian funds; Net, non-commissionable;
4. Hotel room rates are subject to 3% DMF (Destination Marketing Fee), 4% Alberta Tourism Levy and 5% GST
5. Sawridge Inn and Conference Centre Edmonton South will grant a **21 day cut-off**; at which time any of the guestrooms/night priced at the negotiated rate as stated in the above table cannot be guaranteed and will be confirmed on a space and rate available basis only
6. **24 hour cancellation policy** will be granted to individual room reservations
7. 10% off FOOD in property's outlets; Creations Dining Room and Lounge
8. The aforementioned negotiated rate will be available to delegates staying in the hotel up to 3 days prior to contracted date of arrival and/or 3 days post contracted departure date

I hope to get the opportunity to work with you and your partners to assist in executing a successful event. Should you have any questions, comments or concerns, please feel free to contact me.

Yours in Hospitality,



**Daniel Montenegro**

Sales Manager

t 780 989 4434 | c 587 597 1677 | e [dmontenegro@sawridge.com](mailto:dmontenegro@sawridge.com)



StaybridgeSuites.com | 800.238.8000



# DISCOVER A FRESH APPROACH TO COMFORT

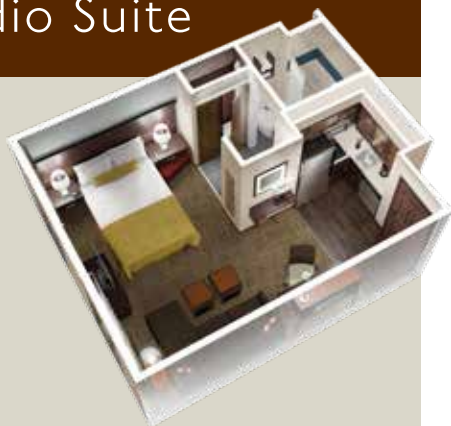


The home-like surroundings you want, with all the little things you need.

Welcome to Staybridge Suites® hotels, the all-suite extended stay hotel designed to give you the most home-like stay possible. We know it's not easy to be on the road for days, weeks or even months at a time, so it's important to us that you feel welcome, connected and completely comfortable in every way while you're here. So settle in, stretch out and stay awhile.

# FLOOR PLANS

## Studio Suite



Offers a spacious open floor plan

## One-Bedroom Suite



Enjoy separate living and sleeping areas

## Two-Bedroom/Two-Bath Suite



Great for families who need extra space

### In-suite comforts and conveniences:

- Three spacious suite options include studio, one-bedroom and two-bedroom/two-bath suites\*
- Fully equipped kitchen with refrigerator and icemaker, microwave, stovetop and dishwasher
- Comfortable living space
- Well-lit workspace with large desk
- Direct-dial speakerphone with personalized voicemail and free local calls
- Entertainment center with expanded cable TV, DVD player and movie options
- Plush bedding
- Plenty of storage
- Iron and ironing board
- Pet Friendly

### Home-like surroundings:

- Complimentary hot breakfast buffet with a variety of your favorites
- The Social evening receptions (Tuesday –Thursday)
- The Pantry, our 24-Hour Convenience Store
- Business Center open 24/7 with computers, printers and a fax machine
- Free Wireless Anywhere throughout the hotel
- The Den with a flatscreen, couches, and a reading nook with books and games to borrow
- The Great Room with a fireplace, comfortable seating and a flatscreen TV†
- 24-hour Fitness Room and complimentary, self-serve Laundry Room
- Backyard BBQ Pavilion, plus Sport Court and swimming pool†

### IHG® Rewards Club | IHG

As a member of IHG® Rewards Club, your points never, ever expire and you have the freedom to redeem your points how you want, when you want, for what you want. Enjoy Reward Night stays at over 4,400 hotels, Flights Anywhere™, merchandise, gift cards, and more. Earn points when you stay at any of our Staybridge Suites hotels or any IHG® location worldwide. To enroll, please see a Front Desk team member or visit [ihgrewardsclub.com](http://ihgrewardsclub.com).

[StaybridgeSuites.com](http://StaybridgeSuites.com) | 800.238.8000



InterContinental  
Hotels Group



†Amenities vary by hotel

© 2014 InterContinental Hotels Group. All rights reserved. Most hotels are independently owned and/or operated.

\* Floor plans, suite and bed type vary by hotel



September 30, 2016

**Watch Tower, Bible and Tract Society of Canada**

Contact: NA

RE: Group Booking Proposal

Thank you for allowing us to submit proposal to your upcoming events. We are proud to announce that we are a completely non-smoking hotel. Please find the details below of the room block.

Block Details:

Group Code – **CGWTBT**

**Listed as: Watch Tower, Bible and Tract Society of Canada**

Arrival: July 20, 2017

Departure: July 23, 2017

Room block:

**30**– Standard Rooms with 2 queen beds, rate of \$100.00 + taxes per room.

**10**– Family Suites (1 Queen separate room + double bed), \$110.00 + taxes

**15** – Mini Suites (1 Queen separate room + sofa bed), \$105.00 + taxes

Parking is free.

We offer a free enhanced Superstart breakfast.

Should you have any questions or require further information please let me know. Our toll free # is **1866 468 8839**. (please stay on the line for front desk to answer).

Sincerely,

Juvy Santos

Hotel Manager

Super 8 Edmonton South

3610 Gateway Blvd. Edmonton, AB, T6J 7H8

Phone: 780 433 8688 x 284

To view our property and all amenities please visit our site at [www.super8edmontonsouth.com](http://www.super8edmontonsouth.com).





*The Sutton Place Hotel*

Proposal for:

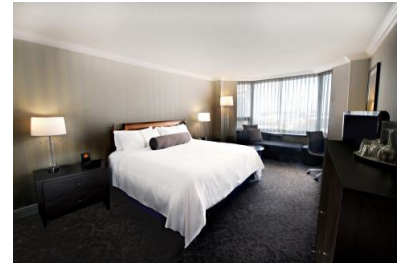
## Watch Tower, Bible and Tract Society Jehovah's Witness

Re: Jehovah's Witnesses' 2017 Regional Conv. - July 20, 2017 - July 23, 2017

SUBMITTED BY: Jared Carmichael, Sales Manager

PH: 780-441-3005 Email: [jcarmichael@suttonplace.com](mailto:jcarmichael@suttonplace.com)

Submission Date: Thursday, September 29, 2016



### **The Sutton Place Hotel Edmonton:**

Delicate crystal chandeliers, warm colors of Italian marble and granite, soft luxury Persian carpets, and unique French Provincial styled furnishings, The Sutton Place Hotel Edmonton is ideal for business or leisure travel. An award-winning banquet team, attention to detail, and personal care provide the elegance The Sutton Place Hotel is renowned for.

Location, location, location! Connected by pedway to five major office towers and over 400 shops, restaurants, and movie theatres in the Edmonton City Centre Mall, every convenience of downtown Edmonton is at our guests' fingertips. We also have fantastic onsite amenities including a Starbucks located in our gift shop, and our in-house restaurant CHOP. We are located in the heart of the Edmonton Entertainment District, just moments from our city's most exciting venues and attractions, and only a block from the new Rogers Place arena which will open in the fall of 2016. There will never be a dull moment for your delegates in their down time!

THE SUTTON PLACE HOTEL COMPANY  
EDMONTON • REVELSTOKE MOUNTAIN RESORT • VANCOUVER  
1.866.378.8866 • [WWW.SUTTONPLACE.COM](http://WWW.SUTTONPLACE.COM)





### GUESTROOM INFORMATION

**Available Dates:**

We presently have both meeting space and guestrooms available on your requested dates from Thursday, July 20, 2017- Sunday, July 23, 2017. We have not protected the space at this time, but would be delighted to do so upon request.

		<b>Sutton King Bed</b>	<b>Sutton Double Beds</b>	<b>Deluxe King Bed</b>	<b>Deluxe Double Beds</b>	<b>Total Rooms</b>
Thursday	07-20-17	75	\$129.00	50	\$129.00	225
Friday	07-21-17	75	\$129.00	50	\$129.00	225
Saturday	07-22-17	75	\$129.00	50	\$129.00	225

<b>TOTAL NUMBER OF ROOM NIGHTS</b>	<b>675</b>
------------------------------------	------------

NOTE: Rates are subject to 4% provincial levy, 3% Destination Marketing Fee and 5% GST. All rates are quoted in Canadian funds and are non-commissionable.

**Guestroom Considerations:**

The Hotel is pleased to offer...

- 1 complimentary room for every 40 rooms occupied per night by your delegates—Value \$2,316
- 5 complimentary upgrades to Executive Suites for your VIPs—Value \$1,010

**Value Added Features:**

- Swimming Pool & Fitness Area: Access to the swimming pool & Fitness Area is complimentary to all overnight guests **\*\*\*Only hotel rooftop pool in Edmonton!\*\*\***
- Pre/Post: The guestroom rates will be extended 3 days pre and post, subject to availability at the time of booking
- Complimentary wireless internet access – in all guest rooms
- Completely non-smoking hotel

**Accommodations breakdowns:**

**313 Total Guest Rooms and Suites**

- 182 King Rooms
- 102 Double Rooms
- 23 Executive Rooms
- 3 Grand Suites
- 1 Royal Suite

**All Guestrooms Have...**

- Secured floor access
- Room service daily from 6:00am - midnight
- Daily Newspaper
- Flat screen digital TVs with in room movies
- Iron & Ironing Board
- Mini fridge, easy chair, *coffee maker*
- *Complimentary Wi-Fi*





# The Sutton Place Hotel

## Guestrooms:

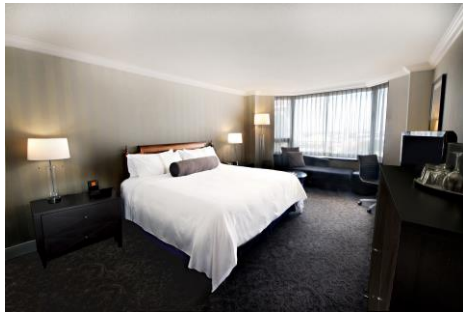
*(All hotel rooms are non-smoking)*

Tradition and Elegance go hand-in-hand at The Sutton Place Hotel, Edmonton. Our 313 guestrooms and suites range in size from spacious traditional accommodations to our two-storey luxurious Royal Suite.



### **Sutton Room – 2 double beds or 1 king bed**

- Rooms located on 3<sup>rd</sup> thru 10<sup>th</sup> & 22<sup>nd</sup> thru 26<sup>th</sup> floors
- Includes 27" flat screen digital TV with in room movies
- Sutton Place Guest Room (approximately 320 square feet)
- 27" flat screen digital TV with in-room movies
- Secured floor access
- Complimentary Wi-Fi



### **Deluxe Room – 1 king bed or 2 double beds**

- Rooms located on the 11<sup>th</sup> thru 21<sup>st</sup> floors
- Deluxe Guest Room (approximately 320 square feet)
- Upgraded amenities include: duvet cover, slippers, bathrobe, and furnishings
- 37" or 42" LCD flat screen digital TV with in-room movies and video check out
- Complimentary bottled water
- In-room safe



### **Executive Suite**

- Executive Guest Room (approximately 400 square feet)
- Upgraded amenities include: duvet cover, slippers, bathrobe, and furnishings
- 42" LCD flat screen TV
- Two complimentary bottles of water
- 2 phones, in-room safe, bathrobe
- Iron & ironing board
- Mini- fridge, easy chair, coffee maker & hair dryer



**ATTRITION AND CANCELLATION POLICIES**

Should your group go ahead with its event, below are our standard cancellation and attrition policies.

**Attrition:**

The parties agree that the group and the Hotel will share in the loss of revenues suffered by the hotel in the event of the group’s failure to utilize all of the rooms and services agreed to after the final 45-day review. The group therefore agrees to pay a percentage of lost revenue.

For Guestroom room revenue, the lost revenue will be calculated by multiplying the number of rooms not utilized out of the groups block times the average room rate of rooms actually utilized, plus tax.

<b>Percentage of rooms</b>	<b>Group Pays</b>
80% or more	0
79% or less	100% of lost revenue

For food, beverage, meeting rooms and other services revenue, lost revenue will be calculated by subtracting the exact amount of food and beverage provided from the total anticipated food and beverage agreed to herein. The lost revenues for food, beverage, meeting rooms and other services and for sleeping rooms will be calculated separately.

**Cancellation / Modification:**

If the Group fully cancels the Event, the Hotel shall have suffered damages equivalent to the profits that the Hotel would have earned from the sale of rooms, food and beverages, and use of recreation facilities, etc. in connection with the Event. The Hotel reserves the right to recover lost anticipated revenues including, but not limited to, guestrooms, function space, food and beverage according to the following schedule:

<b>NUMBER OF DAYS PRIOR TO THE EVENT</b>	<b>PERCENTAGE OF LOST REVENUE</b>
180 - 365 days	10% of anticipated revenues
136 – 179 days	25% of anticipated revenues
91 – 135 days	50% of anticipated revenues
46 – 90 days	75% of anticipated revenues
0 – 45 days	100% of anticipated revenues



## HOTEL FEATURES

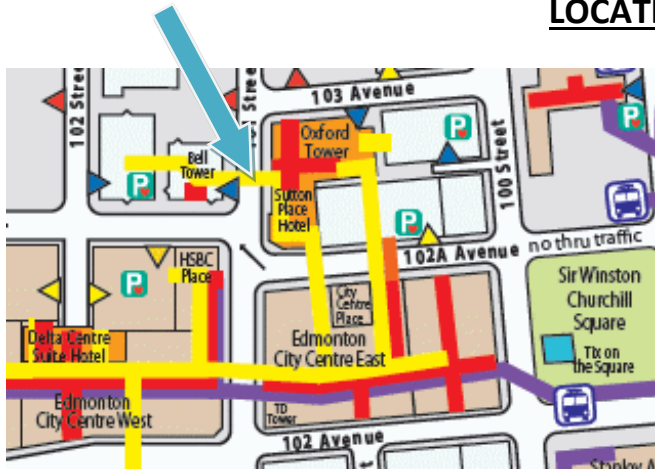
### Indoor Rooftop Swimming Pool:



Accumulate points for all your meetings and redeem them for unique gifts and rewards. In addition, as a Sutton Meeting Professional Points member, you will be recognized as our top-tier Sutton Prestige Platinum status member, which comes with a host of exclusive benefits.

Quick & Easy  [Register Now](#)

## LOCATION



- Located in the heart of downtown Edmonton, and the Arts and Entertainment District.
- Adjacent to the Edmonton City Centre Mall, with over 400 shops and services, and the Light Rail Transit System (LRT), connecting you to the rest of the city. Both accessible by indoor pedway.
- An easy 10-minute walk (either above or underground) from the Shaw Conference Centre.
- Minutes from Rexall Place, and across the street from the new Ice District and Rogers Place arena, opening in the fall of 2016.
- 8-minute drive to Northlands and the Edmonton EXPO Centre—The largest space of its kind in Western Canada.

**AIRPORT INFORMATION:** Edmonton International Airport: 35km – approximately 35 minutes.

- Shuttle bus: Sky shuttle \$18.00 one way or \$30.00 return.
- Taxi: Approximately \$55.00, pending traffic.

### **Parking:**

Hotel parking is available at adjacent lots for between \$5-\$31 per day.

**\*Please note: Parking prices are subject to change without notice, as the hotel does not own the parking facilities.**

For more information on The Sutton Place Hotels please visit our website at [www.suttonplace.com](http://www.suttonplace.com)

Or contact **Jared Carmichael** at **780-441-3005** or by email at [jcarmichael@suttonplace.com](mailto:jcarmichael@suttonplace.com)



**WESTIN**  
HOTELS & RESORTS

# Welcome to Wellness

---



Watch Tower, Bible and Tract Society of Canada  
Jehovah's Witness 2017 Regional Convention  
July 20, 2017 to July 23, 2017

**THE WESTIN EDMONTON**

10135-100 Street  
Edmonton, AB T5J0N7  
Canada

T +1 780.426.3636  
F +1 780.428.1454

[westin.com/edmonton](http://westin.com/edmonton)

I would like to thank you for your interest in placing your guests for the “Jehovah’s Witness 2017 Regional Convention” with Starwood Hotels & Resorts. I am very pleased to introduce myself as your representative for The Westin Edmonton. My goal is to provide seamless and efficient communication to find the best fit and value for your program. Detailed below is information on how your program would be an excellent fit for our property.

## The City at Your Fingertips



The Westin Edmonton’s trendy downtown location puts you within steps of the city’s most sought-after attractions. Discover the best shopping, dining & entertainment Edmonton has to offer, all in the immediate area. The hotel is just steps from the Shaw Convention Centre, making it a convenient choice for business travellers.

Outdoor enthusiasts will appreciate the lush greenery of the river valley, home to the largest expanse of urban parkland in North America. From shopping to festivals, to performing arts, there’s always something to do in the city. Music lovers can check out one of the many annual festivals, which include the world-renowned Folk Festival, Street Performers Festival, and Fringe Festival. Just seven miles from the hotel, West Edmonton Mall offers more than 900 stores, a skating rink, Water Park, and more. If you prefer to stay close by, we are just two

blocks from the Arts District, where you’ll find the Art Gallery of Alberta, Winspear Centre ~ home of the Edmonton Symphony Orchestra and the Citadel Theatre.

## Availability

### 1<sup>st</sup> Option

We are delighted to be able to offer you 1<sup>st</sup> option availability for both guestrooms and meeting space over your preferred dates of: July 20, 2017 to July 23, 2017.

## Guestrooms

	Thu, Jul 20, 2017	Fri, Jul 21, 2017	Sat, Jul 22, 2017	Total
Traditional (MDN)	184	184	184	552
Traditional (MKN)	116	116	116	348
<b>Attendees Room Block Total</b>	<b>300</b>	<b>300</b>	<b>300</b>	<b>900</b>

**Total Number of Guestrooms: 900**

**Guestroom Minimum: \$93,600.00**

## Rates

We are delighted to offer the following confirmed guest room rates to your group:

	Single/Double
Traditional Guestroom	\$104.00

*An additional \$25.00 per person is required for rooms that exceed occupancy of 2 guests – max occupancy 4 people.*

The above rates are net non-commissionable and exclude provincial and local taxes, currently 12.27% (*Approximately 5% Goods and Services Tax, 4% Provincial Tourism Marketing Levy and 3% Destination Marketing Fee*).

## Revitalizing Rest

---

Each of our 416 guest rooms and suites are designed to provide the utmost in comfort and tranquillity for our guests. Our rooms include an array of thoughtful amenities designed to leave you feeling well cared for during your stay. Let breath taking views of Edmonton lift your spirits as you enjoy complimentary Starbucks® coffee each morning.

Our signature Westin Heavenly® Bed provides ten layers of comfort for a deep sleep that replenishes your brain and body, while the Heavenly® Shower helps you rise and shine like never before.

*Westin didn't discover fresh air, but we're proud to offer 100% smoke-free guest rooms.*



### TRADITIONAL ROOMS

- 285 Square Feet / 26 Square Meters
- 32-inch flat panel LCD TV
- Spacious work desk
- In-Room Safe

*The above amenities are available in all rooms.*

## Flexible Rewards

---

Hotel will provide the following concessions if Group fulfills its Minimum Food & Beverage Revenue commitment and, at least 90% of its Minimum Guest Room Revenue.

- Complimentary high speed Internet access in all Guest rooms.
- Hotel will provide complimentary early check-in of 11:00AM for all group delegates, as required.
- Waived early departure fee of \$75.00 should any attendee's check-out prior to their confirmed checkout date.
- Hotel will provide complimentary late check-out of 5:00PM at no additional charge for all group delegates, as required.
- 3 Complimentary amenities to be delivered during event dates. Retail value not to exceed \$45.00 per amenity. (Hotel's
- Double Starwood Preferred Guest (SPG) points to be awarded once final bill is paid.
- Group rate honoured 3 days pre (arrival day) and 3 days post (departure date), based on Hotel's availability.

## Dynamic Details

---

Let us take care of every detail so that you leave The Westin Edmonton feeling better than when you arrived. Just one touch of the Service Express® button on your phone will instantly connect you to our 24-hour Front Desk staff. Whether you need laundry services or a meal from in-room dining, we'll make sure you're well taken care of throughout your stay.

- *Check in: 3:00 PM Check out: 12:00 PM*
- *Disability Accessible Facilities*
- *24-Hour Business Center*
- *24-Hour Front Desk*
- *24-Hour in Room Dining*
- *Safe Deposit Boxes*
- *Laundry/Valet Service*
- *Onsite Beauty Salon & Gift Shop*
- *Wired & Wireless High Speed Internet Access in Guest Rooms 9.95-12.95 CAD per day*

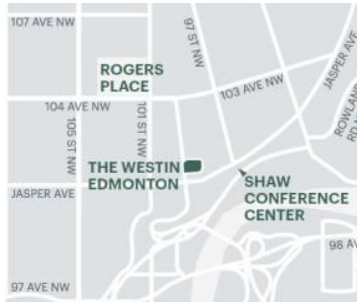
**Reservations Procedure:** Your delegates can make reservations 24-hours a day's, seven days a week through our Central Reservations Office, at 1-800-937-8461, identifying themselves as members of a group. Reservations may also be made online via the complimentary Star Groups Online Reservations System.

### STARGROUPS CUSTOMIZED EVENT WEBSITES

A complimentary custom website for your event — it's one stop for everything you need. Your StarGroups template includes a unique URL and allows you to add:

- Logos, images and marketing messages for your event
- Event and destination details, including transportation, dining and local area information
- Necessary documents for attendees to download
- A guest room-booking tool with instant email confirmation for attendees
- Secure, 24 /7 real-time reporting tools for you

## Transportation & Parking



Transportation is incredibly easy in Edmonton. We recommend guests fly in to the Edmonton International Airport (YEG), only 33 kilometres /21.1 miles from the hotel, about 45 minutes away by vehicle. The hotel is accessible by taxi or via the Edmonton Sky Shuttle; prices vary depending on the service. Please visit our website for more information.

The Westin Edmonton also offers both valet and self-parking options in our heated underground parkade. Hourly and daily rates available. In and out privileges are included with daily rates.

**Self-Parking: \$30.00/Day**  
**Valet Parking: \$41.00/Day**

## Fulfilling Fitness

**WESTIN WORKOUT**



On the road shouldn't mean out of shape. Our WestinWORKOUT® Fitness Studio keeps you fit at any hour of the day. Raise your heart rate on state-of-the-art Life Fitness® treadmills, stair machines, and stationary bikes. Afterwards, soothe your body in the sauna or cool down with complimentary apples and water. TVs and complimentary ear buds keep you entertained as you exercise.

### PACK LIGHT AND STAY FIT

Westin and New Balance® now offer shoes and athletic wear to use during your stay so you can pack lighter or workout on a whim.

### READY, SET, RUNWESTIN™

See the local sites up close while you exercise on a group run lead by a RunWESTIN™ Hotel Running Concierge. Offered seasonally from May to September, our 5K group runs depart at 6:30am every Tuesday and Wednesday morning.

## Natural Nourishment

### SUPERFOODSRX™

Fuel your body with delicious SuperFoodsRx™ dishes packed with nutrients and energy. Created together with doctors and nutritionists, our SuperFoodsRx menu cultivates "food synergy," the pairing of certain foods to increase their nutritional value, to give you the focused energy you need to meet the challenges of your day.

### SHARE RESTAURANT & THE LOBBY LOUNGE

Whether you're looking for a dining experience to tempt your taste buds or restore your energy levels, you'll find cuisine that's both nourishing and irresistible at our restaurant and lounge. Chic furnishings set a tone of sophisticated hospitality at Share, which highlights local ingredients in its innovative preparations. The Lobby Lounge invites guests to pull up a chair and enjoy a drink or savor a light bite before heading out on the town.

## Environmental Practices

The Westin Edmonton has been awarded a 4 Green Key rating by the Hotel Association of Canada in recognition of our commitment to reduce waste and protect the environment through:

- *Energy & Water Conservation*



- *Waste Minimization & Environmentally Responsible Purchasing*
- *Enhanced Indoor Environmental Quality*
- *Raising Awareness*

**MAKE A GREEN CHOICE (MAGC)** is Starwood's guest-facing sustainability program in which guests can choose to help reduce our environmental footprint. Guests can *Make a Green Choice* by foregoing full housekeeping for up to three days in a row (excluding their check-out day). For each night a guest opts into MAGC, they receive 500 Starpoints or a \$5 Food & Beverage voucher.

## Recognition & Awards

---



The Westin Edmonton is very pleased to have been designated the prestigious CAA/AAA 4 Diamond Rating as well as a 4.5 Star Rating from Canada Select. Previous awards included the Meetings and Incentive Travel Readers Choice Award for Best Meeting Facility & Service Excellence in Western Canada as well as the recipient of the Heart and Stroke Foundation of Canada's Leadership Award in Heart Healthy Policy. This Award is being presented to Westin Hotels for being the first hotel chain

to adopt a complete "smoke-free" policy, a policy that created a sea of change in the hotel industry. The Alberta Hotel & Lodging Association (AHLA) '2016 Employer of Choice Award'.

As you can see there are many reasons for choosing The Westin Edmonton to host your event. Our team is ready to ensure that you experience so much more by redefining efficient service with an effortless style and gracious attitude that ensures a truly unforgettable experience and most importantly, you and your delegates are at your best!

I look forward to the opportunity to work with you and welcome your important attendees to relax and unwind at The Westin Edmonton. Please don't hesitate to reach out to me if I may provide any additional information or answer any questions you may have.

Be Inspired,  
Be Westin,

**Tammy Riordon**

Sales Manager - Group

[first.lastname@westin.com](mailto:first.lastname@westin.com)

T +1 780.493.8917 F +1 780.424.1525

*For a better you.™*



## Travelodge Edmonton South 2017 Group Contract

Group Name:

Jehovah's Witnesses 2017  
Convention

Address:

Telephone #:

Mobile:

Email: tnielsen@edmonton.com

### Block Information:

Arrival	Departure	Room Type	# of Rooms	# of Nights	Rate Per night
July 20,2017	July 22,2017	One Queen Bed	20	3	89.00
		Two Double Beds	20	3	94.00

### Additional Information and Requirements

**Guaranteed Reservations:** All reservations must be **guaranteed** at the time of booking, by either a **credit card or deposit of the first night charge or a PO # for Direct Billing**. No 4pm or 6PM Holds will be allowed on any reservations.

**Damage Deposit:** Group **credit card** is required for damage deposit or individual payment for **100.00** per room. Damages includes: noise complaints, extra cleaning, and lost or damage of hotel's property.

**Number of people:** Rate is for up to 4 people per room.

**Special Requests:** Smoking or non-smoking rooms must be noted on rooming list and will be provided on availability on receipt of rooming list.

**Cut Off Date:** **June 22, 2017** (Any rooms not picked up will be released at this date).

**Cancellation Policy:** Cancellation of the group must be received by the hotel no later than **July 06, 2017**. Cancellation after this date will be charged 1 night room and tax per room.

**Rooming List:** Due to the hotel **July 13 2017**.

**Breakfast:** Continental breakfast with hot waffles is included.

**Taxes:** All rates DO NOT include Taxes & Fees (12.15% - Hotel Tax, GST & DMF).



## Contract Terms

To guarantee rates quoted, the availability of sleeping rooms requested and all other terms of this contract, this contract must be signed and returned to the hotel no later than **Nov. 30, 2016**.

**Any person or persons are responsible for paying \$250.00 charge if caught smoking in a nonsmoking room. We have a number of pet friendly rooms, and an additional charge of \$10 per pet per room. If you require a pet friendly accommodations, please inquire on our availability.**

10320 45 Ave, Edmonton AB T6H 5K3

Mel Bebit - Assistant Manager

Telephone: 780-436-9770 Ext. 402

E-Mail: whg7104agm@whg.com

**EDMONTON**  
*All in.*