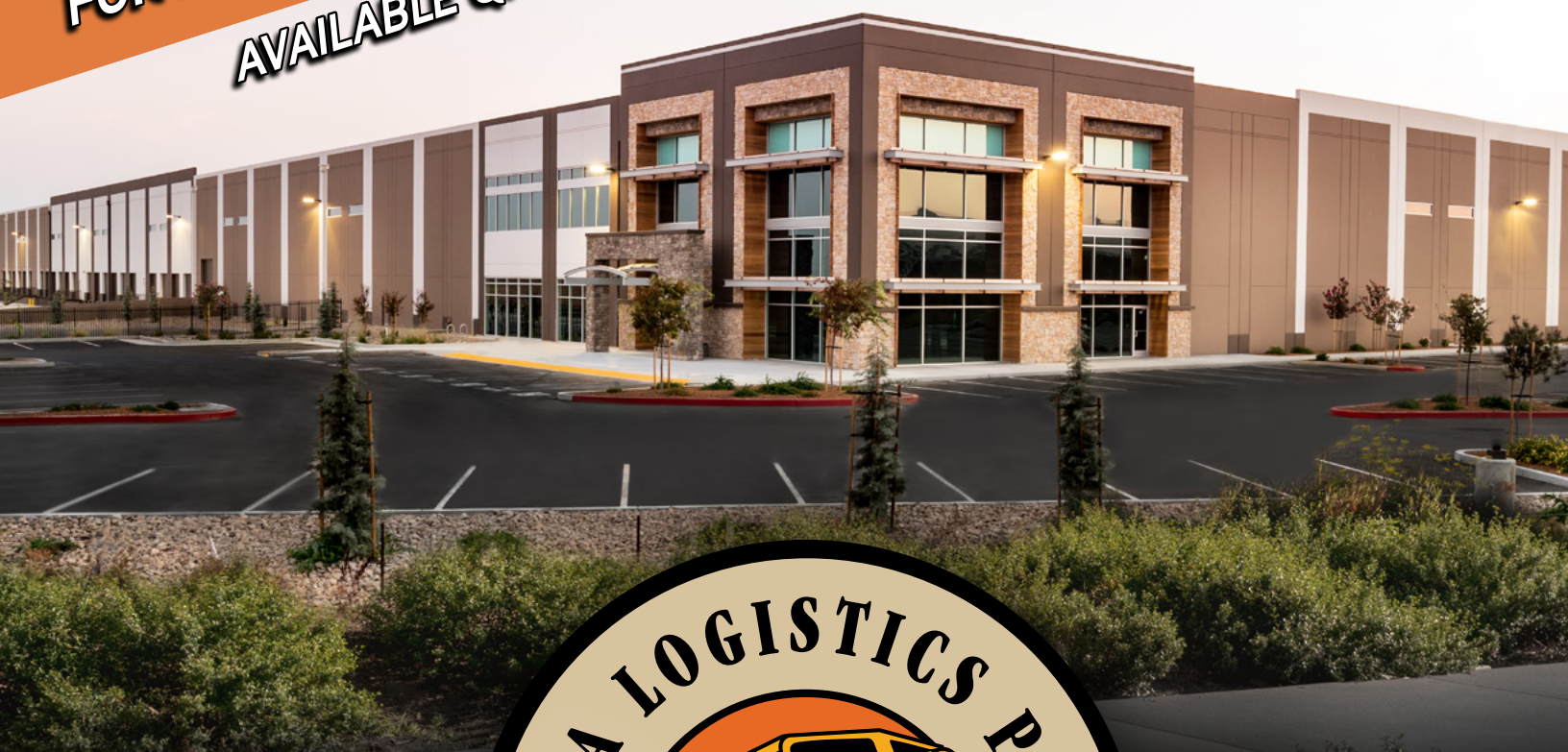


**BUILDING 5**  
**FOR LEASE OR SALE ±362,880 SF!**  
**AVAILABLE Q1 2020**



**VIRTUAL TOUR ONLINE**

**WWW.NAPALOGISTICSPARK.COM**

 **DIVCOWEST**  
 **ORCHARD PARTNERS**

 **CUSHMAN & WAKEFIELD**  
**BROOKS PEDDER** SIOR  
EXECUTIVE MANAGING DIRECTOR  
+1 925 627 2480  
brooks.pedder@cushwake.com  
Lic. 00902154

**JEFF STARKOVICH** SIOR  
EXECUTIVE MANAGING DIRECTOR  
+1 510 267 6020  
jeff.starkovich@cushwake.com  
Lic. 00644571

**BENJAMIN CONWELL**  
E-COMMERCE SPECIALIST  
+1 206 521 0249  
ben.conwell@cushwake.com





# Napa Logistics Park

**±362,880 SF AVAILABLE WITHIN A ±218 ACRE MASTER PLANNED BUSINESS PARK**

**NAPA LOGISTICS PARK** is located in American Canyon within Napa County. Napa Logistics Park is comprised of 218 gross acres with the potential to create more than 2.9 million square feet of warehouse/distribution space for wine and non-wine related users.

**NAPA LOGISTICS PARK** is situated adjacent to an active rail line serviced by Union Pacific Railroad which benefits companies seeking rail access to/from the Port of Oakland - less than 35 miles from the site.

**NAPA LOGISTICS PARK** benefits from direct access to Highway 29, and has access to Interstate 80 from Highways 12 and 37 to the north and south, respectively. The completion of the Highway 12 road-widening improvements has transformed Napa Logistics Park into a premier regional logistics location within Northern California.





## AVAILABLE > FOR LEASE OR SALE

±362,880 SF WITHIN A ±218 ACRE STATE-OF-THE-ART LOGISTICS AND RAIL-SERVED PARK

# Napa Logistics Park

BUILDING 5, NAPA LOGISTICS PARK, AMERICAN CANYON, CA 94503



## Building Five



**BROOKS PEDDER** SIOR  
1 925 627 2480  
brooks.pedder@cushwake.com  
Lic. 00902154

**JEFF STARKOVICH** SIOR  
1 510 267 6020  
jeff.starkovich@cushwake.com  
Lic. 00644571

**BENJAMIN CONWELL**  
E-COMMERCE SPECIALIST  
+1 206 521 0249  
ben.conwell@cushwake.com



[www.cushmanwakefield.com](http://www.cushmanwakefield.com)

**Approximately ±24.51 Acres**  
Construction Completion Estimated Q1 2020

### BUILDING

- > ±362,880 Sq. Ft. Cross-Dock Facility
- > ±320' Deep X ±1,134' Wide
- > ±40' Clear, Concrete Tilt-Up Construction
- > ±54' Wide X ±50' Deep Column Spacing
- > ESFR Fire Suppression System
- > 3,000 Amps @ 277/480 Volts To Main Panel Or To-Suit

### LOADING & PARKING

- > One Hundred and Twenty (120) Dock High Doors (±9' X ±10').
- > Four (4) to Eight (8) Grade Level Doors (±12' X ±14')
- > ±135' - ±140' Staging On Two (2) Sides / ±60' Speed Bays
- > ±268 Car / ±46 Trailer Parking Stalls

[WWW.NAPALOGISTICSPARK.COM](http://WWW.NAPALOGISTICSPARK.COM)





## AVAILABLE > FOR LEASE OR SALE

±362,880 SF WITHIN A ±218 ACRE STATE-OF-THE-ART LOGISTICS AND RAIL-SERVED PARK

# Napa Logistics Park

BUILDING 5, NAPA LOGISTICS PARK, AMERICAN CANYON, CA 94503

### NAPA LOGISTICS PARK | BUILDING 5 PHOTO



### LOCATION HIGHLIGHTS

- > Highway 12 widening: Now Four (4) Lanes From Interstate 80 to Highway 29
- > Napa County Address: All Wine & Food Sectors Benefit
- > 94503 Napa County Zip Code: Benefit for Wine Labeling, Processing & Distribution
- > Direct, rail-served access to Union Pacific Railroad
- > South Napa Climate: Degree Day Energy Savings vs. Other Napa and Solano Locations
- > CNG Truck Fueling: Available at Adjacent Transfer Station
- > FTZ capable with 60-day guarantee of zone status
- > 35 Miles from Port of Oakland with No Weigh Scales

[WWW.NAPALOGISTICSPARK.COM](http://WWW.NAPALOGISTICSPARK.COM)

**BROOKS PEDDER SIOR**  
+1 925 627 2480  
brooks.pedder@cushwake.com  
Lic. 00902154

**JEFF STARKOVICH SIOR**  
+1 510 267 6020  
jeff.starkovich@cushwake.com  
Lic. 00644571

**BENJAMIN CONWELL**  
E-COMMERCE SPECIALIST  
+1 206 521 0249  
ben.conwell@cushwake.com





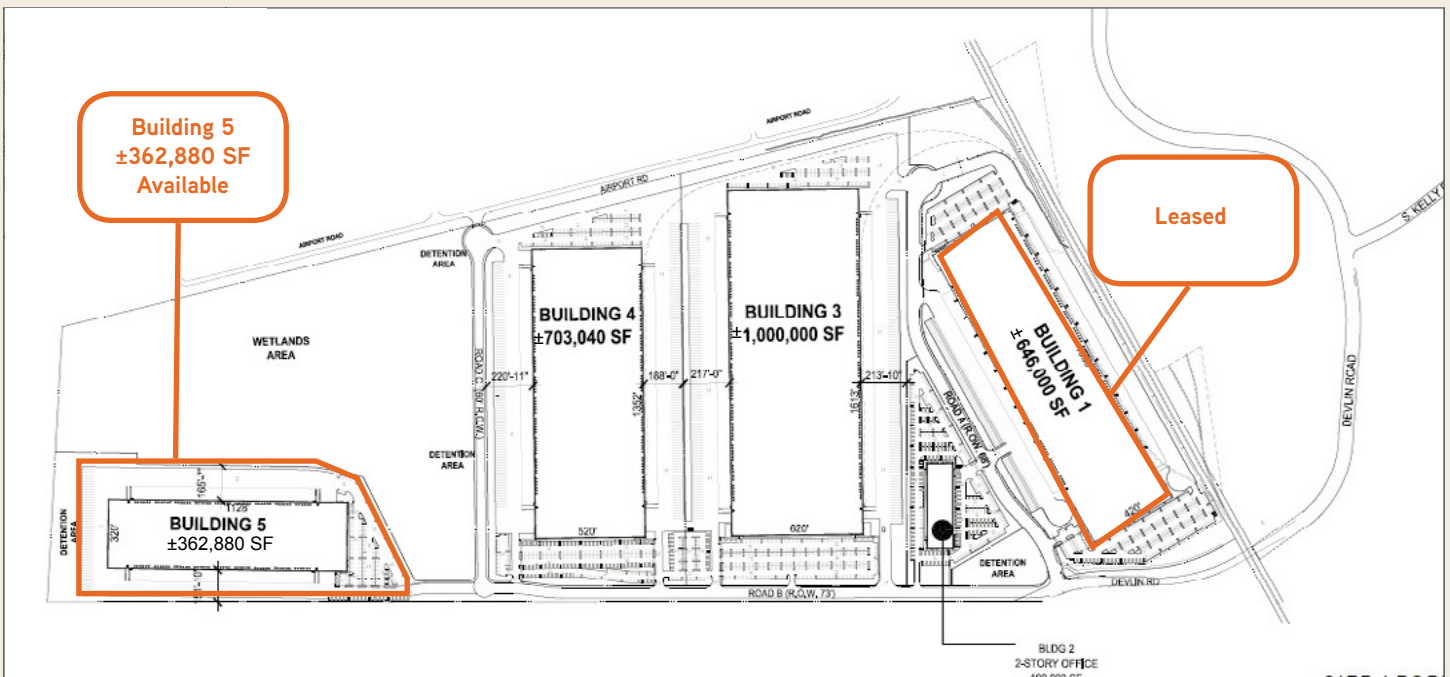
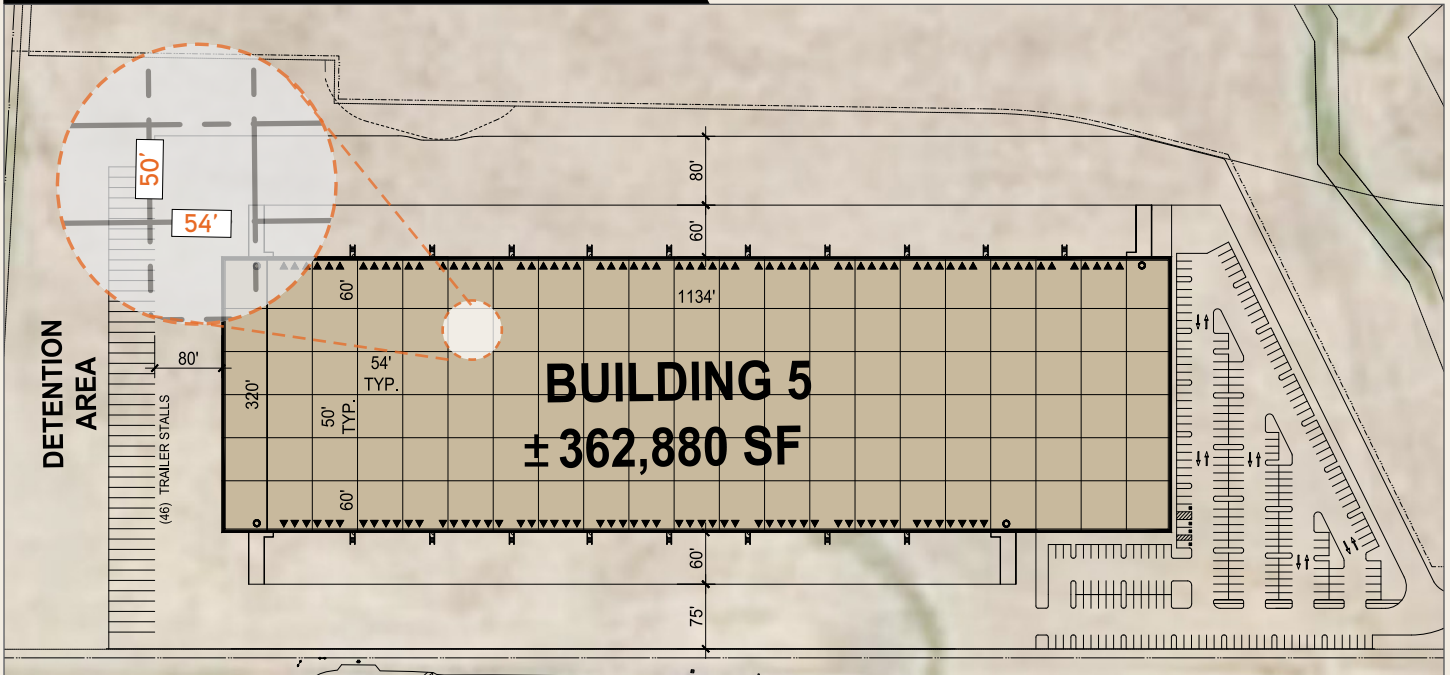
AVAILABLE > FOR LEASE OR SALE

±362,880 SF WITHIN A ±218 ACRE STATE-OF-THE-ART LOGISTICS AND RAIL-SERVED PARK

# Napa Logistics Park

BUILDING 5, NAPA LOGISTICS PARK, AMERICAN CANYON, CA 94503

## NAPA LOGISTICS PARK | BUILDING 5 SITE PLAN



WWW.NAPALOGISTICSPARK.COM

BROOKS PEDDER SIOR  
+1 925 627 2480  
brooks.pedder@cushwake.com  
Lic. 00902154

JEFF STARKOVICH SIOR  
+1 510 267 6020  
jeff.starkovich@cushwake.com  
Lic. 00644571

BENJAMIN CONWELL  
E-COMMERCE SPECIALIST  
+1 206 521 0249  
ben.conwell@cushwake.com







AVAILABLE > FOR LEASE OR SALE

±362,880 SF WITHIN A ±218 ACRE STATE-OF-THE-ART LOGISTICS AND RAIL-SERVED PARK

# Napa Logistics Park

BUILDING 5, NAPA LOGISTICS PARK, AMERICAN CANYON, CA 94503

NAPA LOGISTICS PARK | LOCAL AERIAL



[WWW.NAPALOGISTICSPARK.COM](http://WWW.NAPALOGISTICSPARK.COM)

**BROOKS PEDDER SIOR**  
+1 925 627 2480  
brooks.pedder@cushwake.com  
Lic. 00902154

**JEFF STARKOVICH SIOR**  
+1 510 267 6020  
jeff.starkovich@cushwake.com  
Lic. 00644571

**BENJAMIN CONWELL**  
E-COMMERCE SPECIALIST  
+1 206 521 0249  
ben.conwell@cushwake.com







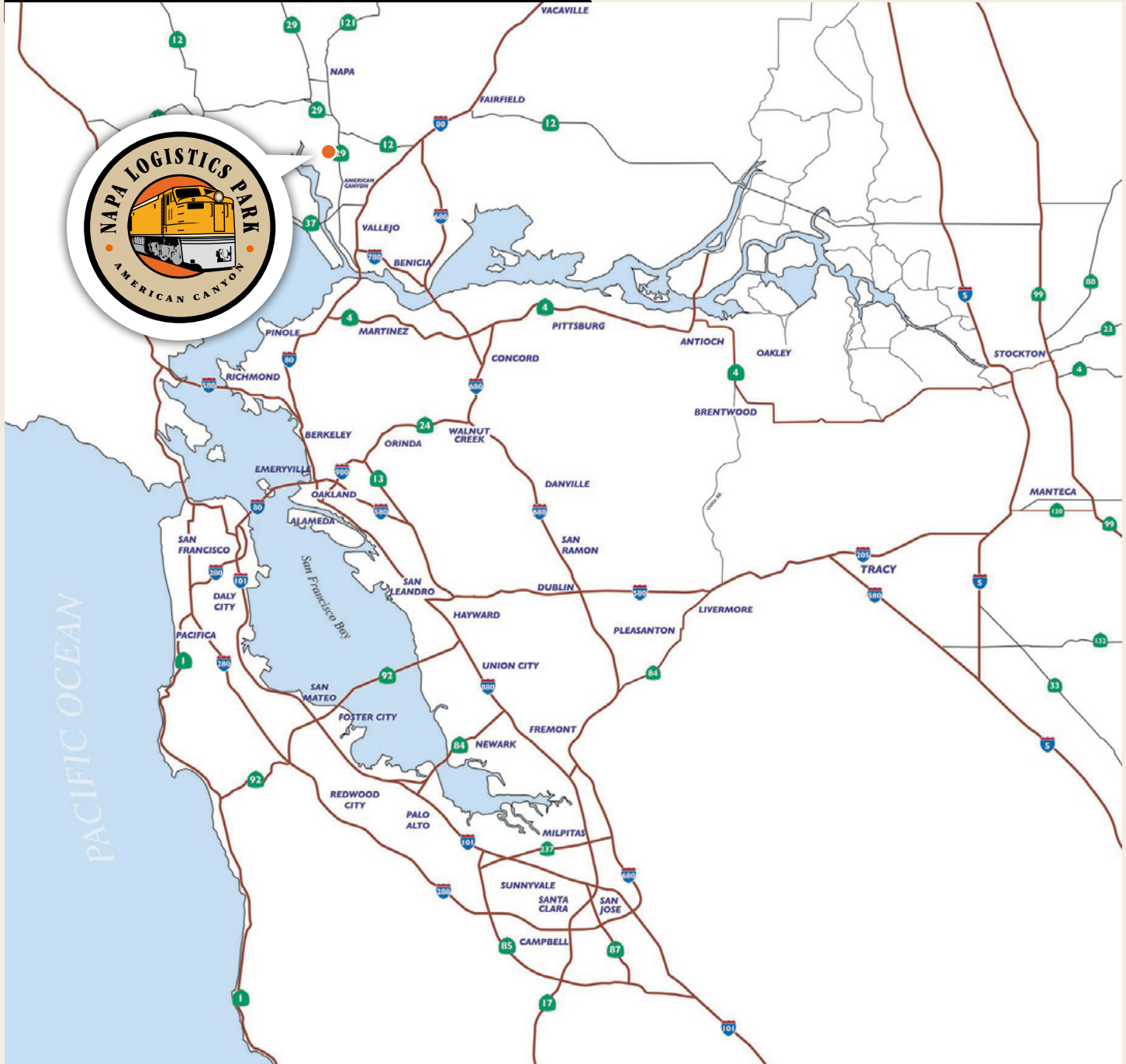
## AVAILABLE > FOR LEASE OR SALE

±362,880 SF WITHIN A ±218 ACRE STATE-OF-THE-ART LOGISTICS AND RAIL-SERVED PARK

# Napa Logistics Park

BUILDING 5, NAPA LOGISTICS PARK, AMERICAN CANYON, CA 94503

### NAPA LOGISTICS PARK | BAY AREA MAP



[WWW.NAPALOGISTICSPARK.COM](http://WWW.NAPALOGISTICSPARK.COM)

**BROOKS PEDDER SIOR**  
+1 925 627 2480  
brooks.pedder@cushwake.com  
Lic. 00902154

**JEFF STARKOVICH SIOR**  
+1 510 267 6020  
jeff.starkovich@cushwake.com  
Lic. 00644571

**BENJAMIN CONWELL**  
E-COMMERCE SPECIALIST  
+1 206 521 0249  
ben.conwell@cushwake.com





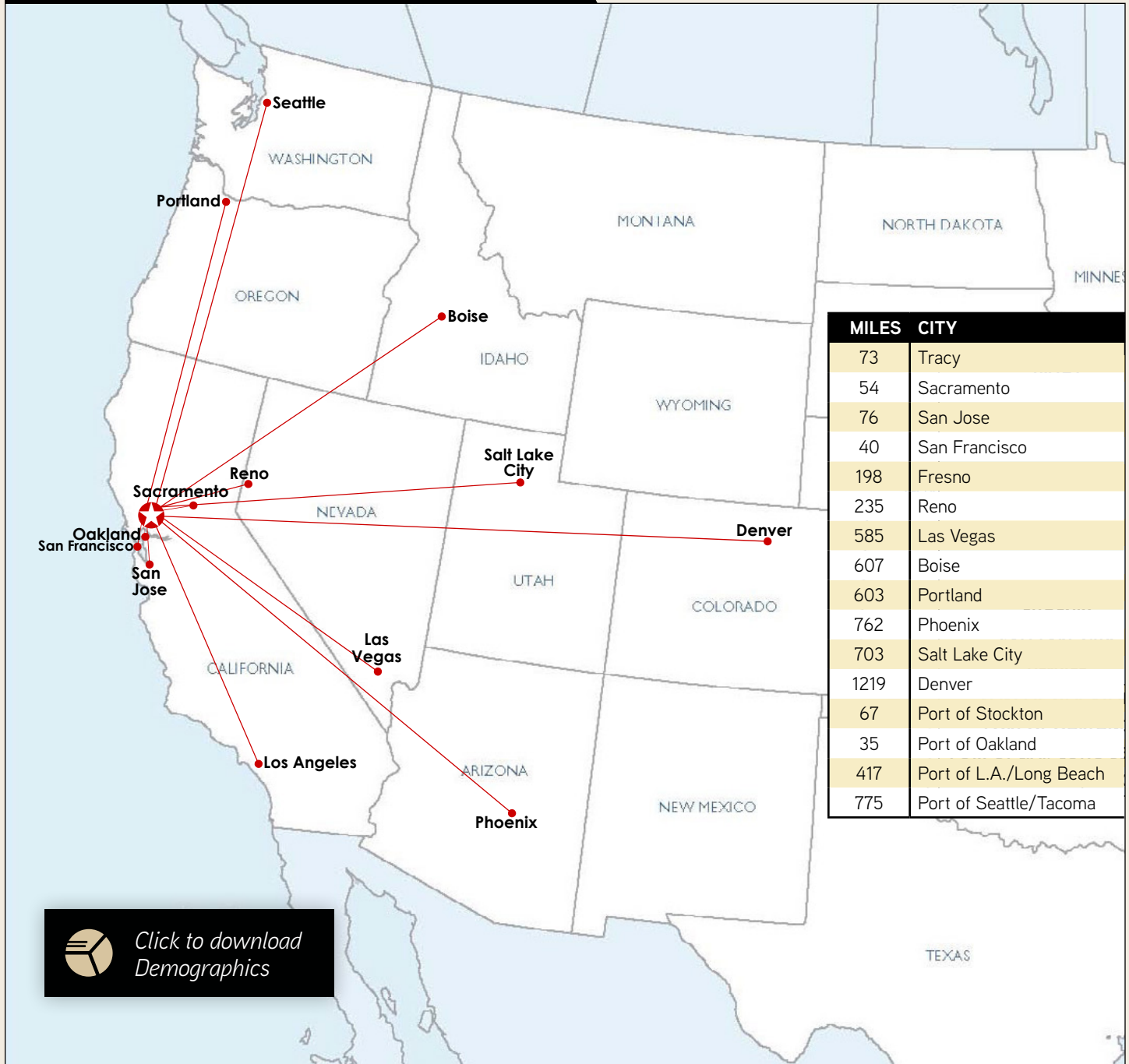
**AVAILABLE > FOR LEASE OR SALE**


±362,880 SF WITHIN A ±218 ACRE STATE-OF-THE-ART LOGISTICS AND RAIL-SERVED PARK

# Napa Logistics Park

**BUILDING 5, NAPA LOGISTICS PARK, AMERICAN CANYON, CA 94503**

**MILEAGE TO MAJOR MARKETS | FROM NAPA, CA**



 [Click to download Demographics](#)

[WWW.NAPALOGISTICSPARK.COM](http://WWW.NAPALOGISTICSPARK.COM)

**BROOKS PEDDER SIOR**  
 +1 925 627 2480  
 brooks.pedder@cushwake.com  
 Lic. 00902154

**JEFF STARKOVICH SIOR**  
 +1 510 267 6020  
 jeff.starkovich@cushwake.com  
 Lic. 00644571

**BENJAMIN CONWELL**  
 E-COMMERCE SPECIALIST  
 +1 206 521 0249  
 ben.conwell@cushwake.com

