



TAILORED **PERFORMANCE**

SPRING/SUMMER **2015**

allseasongear

STRAIGHT LEG

NEW

**1261616 UA PERFORMANCE CHINO
STRAIGHT LEG**

\$79.99 // 30-44, INSEAM 30, 32, 34, 36 //
6.8 oz. 98% COTTON, 2% ELASTANE

- Sits at waist with room through the hip & thigh
- Incredibly soft, durable cotton fabric wicks sweat, resists wrinkles & lets you move
- 4-way stretch fabrication allows greater mobility
- Stretch engineered waistband for incredible comfort
- Hidden side zip pocket
- Deep, ultra-soft knit pocketbags

	BODY/LOGO	FIRST SHIP	LAST SHIP
001	BLACK/BLACK	11/1/2014	
008	STEALTH GRAY/STEALTH GRAY	11/1/2014	
066	CONCRETE/CONCRETE	11/1/2014	
254	CANVAS/CANVAS	11/1/2014	
469	CADET/CADET	11/1/2014	5/15/2015
357	ARTILLERY GREEN/ARTILLERY GREEN	11/1/2014	5/15/2015
325	JELLY BEAN/JELLY BEAN	2/1/2015	5/15/2015
638	CHAKRA/CHAKRA	2/1/2015	5/15/2015





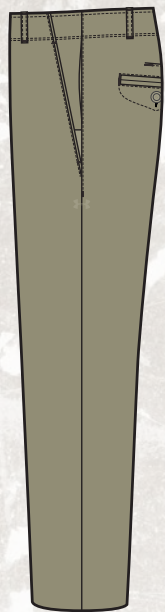
001



008



066



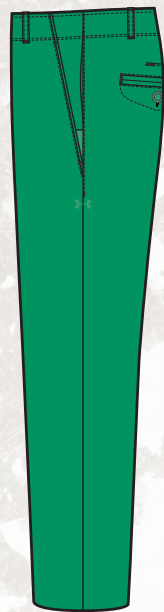
254



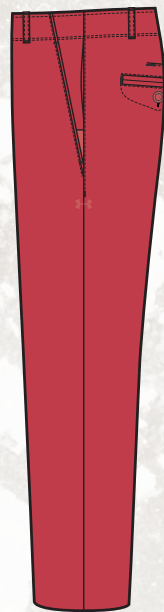
460



357



325



638

allseasongear

TAPERED LEG

NEW

**1261609 UA PERFORMANCE CHINO
TAPERED LEG**

\$79.99 // 30-44, INSEAM 30, 32, 34, 36 //
6.8 oz. 98% COTTON, 2% ELASTANE

- Sits at waist with room through the hip & thigh
- Incredibly soft, durable cotton fabric wicks sweat, resists wrinkles & lets you move
- 4-way stretch fabrication allows greater mobility
- Stretch engineered waistband for incredible comfort
- Hidden side zip pocket
- Deep, ultra-soft knit pocketbags

	BODY/LOGO	FIRST SHIP	LAST SHIP	AR
001	BLACK/BLACK	11/1/2014	5/15/2015	
200	TAN STONE/TAN STONE	11/1/2014	5/15/2015	
257	SADDLE/SADDLE	11/1/2014	5/15/2015	
404	INDIGO/INDIGO	11/1/2014	5/15/2015	
084	BATTLESHIP/BATTLESHIP	11/1/2014	5/15/2015	
390	MARINE OD GREEN/MARINE OD GREEN	11/1/2014	5/15/2015	
473	BLUE TARO/BLUE TARO	2/1/2015	5/15/2015	
847	FIRE/FIRE	2/1/2015	5/15/2015	





001



200



257



404



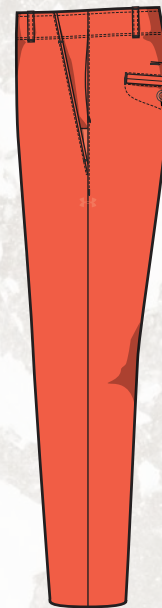
084



390



473



847

allseason[®]gear

TAPERED LEG

NEW

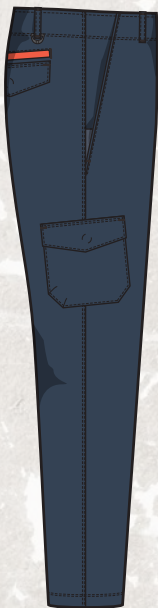
1261617 UA PERFORMANCE UTILITY CHINO

\$99.99 // 30-44, INSEAM 30, 32, 34, 36 //
6.8 oz. 96% COTTON, 4% ELASTANE

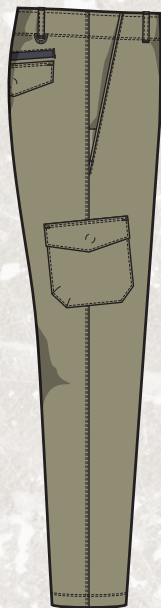
- Sits at waist with room through the hip & thigh
- Incredibly durable cotton twill fabric wicks sweat, resists wrinkles & lets you move
- 4-way stretch fabrication allows greater mobility
- Stretch engineered waistband for incredible comfort
- Single-panel gusset for durability
- Deep, ultra-soft knit pocketbags

	BODY/INSET/LOGO	FIRST SHIP	LAST SHIP	AR
073	WIRE/FIRE/WIRE	2/1/2015	5/15/2015	
200	TAN STONE/STEALTH GRAY/TAN STONE	2/1/2015	5/15/2015	
308	RIFLE GREEN/STEALTH GRAY/RGR	2/1/2015	5/15/2015	





073



200



308



NEW

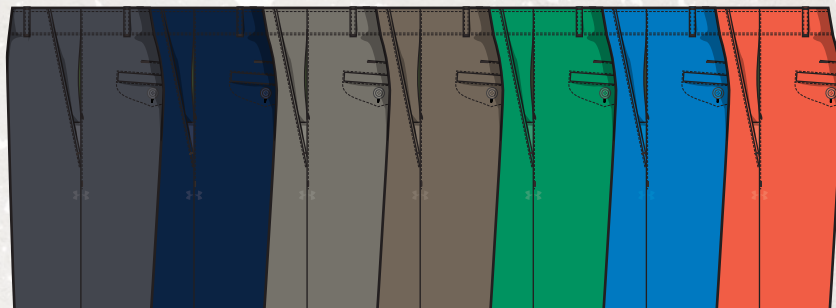
1253679 UA PERFORMANCE CHINO SHORT

\$69.99 // 30-44, 9" INSEAM // 6.8 oz. 98% COTTON, 2% ELASTANE

- *Incredibly soft, durable cotton fabric wicks sweat, resists wrinkles & lets you move*
- *4-way stretch fabrication allows greater mobility*
- *Stretch engineered waistband for incredible comfort*
- *Hidden side zip pocket*
- *Deep, ultra-soft knit pocketbags*
- *Inseam: 9"*



	BODY/LOGO	FIRST SHIP	LAST SHIP
008	STEALTH GRAY/STEALTH GRAY	2/1/2015	
408	ACADEMY/ACADEMY	2/1/2015	
200	TAN STONE/TAN STONE	2/1/2015	5/15/2015
257	SADDLE/SADDLE	2/1/2015	5/15/2015
325	JELLY BEAN/JELLY BEAN	2/1/2015	5/15/2015
473	BLUE TARO/BLUE TARO	2/1/2015	5/15/2015
847	FIRE/FIRE	2/1/2015	5/15/2015



008

408

200

257

325

473

847

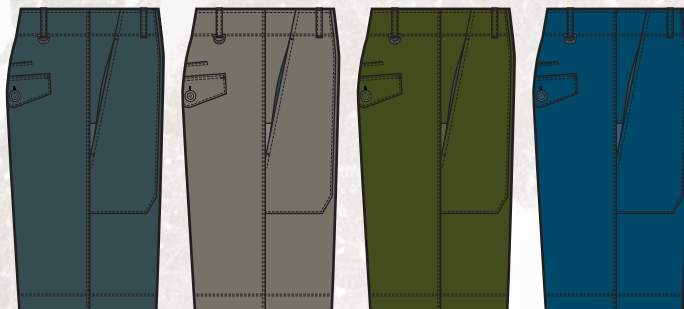
NEW

1256294 UA PERFORMANCE UTILITY CHINO SHORT

\$79.99 // 30-44, 10" INSEAM // 6.8 oz. 96% COTTON, 4% ELASTANE

- *Incredibly durable cotton twill fabric wicks sweat, resists wrinkles & lets you move*
- *4-way stretch fabrication allows greater mobility*
- *Stretch engineered waistband for incredible comfort*
- *Single-panel gusset for durability*
- *Hidden side zip pocket*
- *Deep, ultra-soft knit pocketbags*
- *Inseam: 10"*

BODY/LOGO	FIRST SHIP	LAST SHIP
008 STEALTH GRAY/STEALTH GRAY	2/1/2015	
200 TAN STONE/TAN STONE	2/1/2015	5/15/2015
390 MARINE OD GREEN/MARINE OD GREEN	2/1/2015	5/15/2015
498 WHAM/WHAM	2/1/2015	5/15/2015



008

200

390

498

heatgear

NEW

1256295 UA PERFORMANCE POCKET T

\$39.99 // SM-3XL //

6.2 oz. 84% POLYESTER, 11% WOOL, 5% ELASTANE

- *Wool-blend fabric, built to perform: it's light, insanely soft & dries fast*
- *4-way stretch fabrication allows greater mobility in any direction*
- *Moisture Transport System wicks sweat away from the body*
- *Anti-odor technology prevents the growth of odor causing microbes*
- *Reversed welt interior bonded pocket*

	BODY/INSET/LOGO	FIRST SHIP	LAST SHIP	AR
035	STEEL/FIRE/STEEL	1/1/2015	5/15/2015	
019	CHARCOAL/FIRE/BLACK	1/1/2015	5/15/2015	
100	WHITE/FIRE/WHITE	2/1/2015	5/15/2015	
408	ACADEMY/FIRE/ACADEMY	2/1/2015	5/15/2015	
473	BLUE TARO/FIRE/BLUE TARO	2/1/2015	5/15/2015	
847	FIRE/FIRE/FIRE	2/1/2015	5/15/2015	





035



019



100



408



473



847

heatgear

NEW

1256296 UA PERFORMANCE HENLEY

\$69.99 // SM-3XL //

6.2 oz. 84% POLYESTER, 11% WOOL, 5% ELASTANE

- *Wool-blend fabric, built to perform: it's light, insanely soft & dries fast*
- *4-way stretch fabrication allows greater mobility in any direction*
- *Moisture Transport System wicks sweat away from the body*
- *Anti-odor technology prevents the growth of odor causing microbes*
- *Ribbed underarm panels for added stretch*
- *Bonded buttonholes*

	BODY/INSET/LOGO	FIRST SHIP	LAST SHIP	AR
035	STEEL/FIRE/STEEL	1/1/2015	5/15/2015	
019	CHARCOAL/FIRE/BLACK	1/1/2015	5/15/2015	
100	WHITE/FIRE/WHITE	2/1/2015	5/15/2015	
334	ROUGH/FIRE/ROUGH	2/1/2015	5/15/2015	

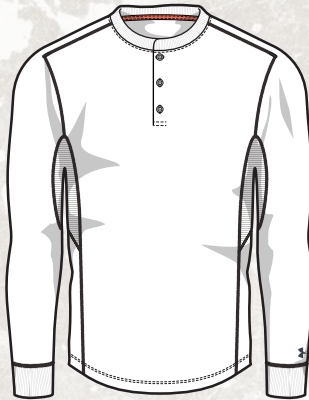




035



019



001



334



NEW

1253480 UA PERFORMANCE PIQUE POLO

\$64.99 // SM-3XL // 4.8 oz. 95% COTTON, 5% ELASTANE

- *Insanely soft Pima cotton keeps you incredibly comfortable, all day long*
- *4-way stretch fabrication allows greater mobility in any direction*
- *Moisture Transport System wicks sweat away from the body*
- *Rib-knit collar provides durable stretch and a clean, classic look*
- *Durable 3-button placket*

	BODY/INSET/LOGO	FIRST SHIP	LAST SHIP	AR
001	BLACK/CHARCOAL/BLACK	2/1/2015		
100	WHITE/STEEL/WHITE	2/1/2015		
025	TRUE GRAY HEATHER/CHARCOAL/STL	2/1/2015		
090	CARBON HEATHER/BLACK/CHC	2/1/2015		
408	ACADEMY/STEEL/ACADEMY	2/1/2015		
308	RIFLE GREEN/RIFLE GREEN/RGR	2/1/2015	5/15/2015	
473	BLUE TARO/CHARCOAL/BLUE TARO	2/1/2015	5/15/2015	
475	CAROLINA BLUE/ACADEMY/CBL	2/1/2015	5/15/2015	
847	FIRE/STEEL/FIRE	2/1/2015	5/15/2015	
522	GALAXY PURPLE/CHARCOAL/GXP	2/1/2015	5/15/2015	





001

100

025

090

408

308

473

475

847

522

heatgear

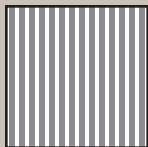
NEW

1256297 UA PERFORMANCE OXFORD SHIRT

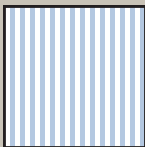
\$79.99 // SM-3XL // 6.0 oz. 98% COTTON, 2% ELASTANE

- *Light, breathable fabric that stretches for greater mobility*
- *Moisture Transport System wicks sweat away from the body*
- *Anti-odor technology prevents the growth of odor causing microbes*
- *Back darting for a more tailored fit*
- *3-point button-down collar*
- *Chest pocket*

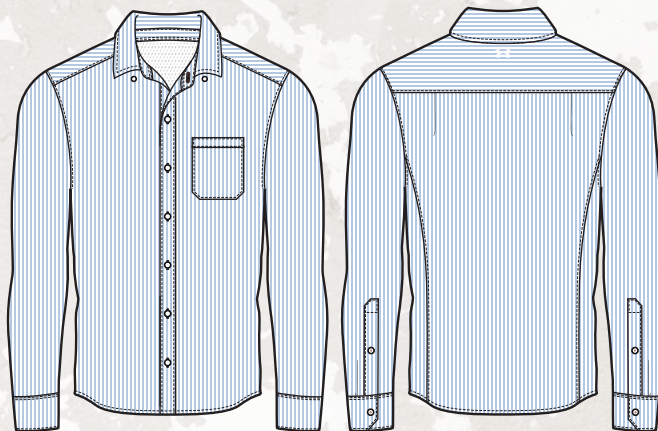
	BODY/INSET/LOGO	FIRST SHIP	LAST SHIP	AR
100	WHITE/WHITE	2/1/2015		
025	TRUE GRAY HEATHER/STEEL	2/1/2015		
090	CARBON HEATHER/CHARCOAL	2/1/2015		
019	CHARCOAL/CHARCOAL	2/1/2015	5/15/2015	
475	CAROLINA BLUE/CAROLINA BLUE	2/1/2015	5/15/2015	
334	ROUGH/FIRE/ROUGH	2/1/2015	5/15/2015	



019 // STRIPE DETAIL



475 // STRIPE DETAIL





100



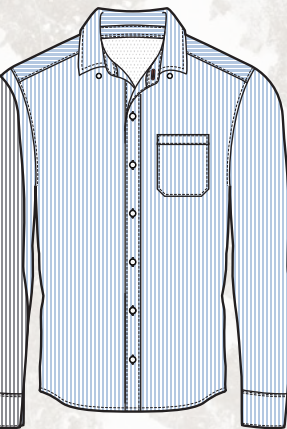
025



090



019



475

heatgear

NEW

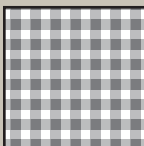
1256298 UA PERFORMANCE WOVEN SHIRT

\$99.99 // SM-3XL //

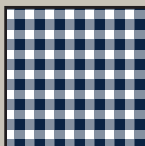
2.8 oz. 70% COTTON, 26% NYLON, 4% ELASTANE

- *Light, breathable fabric that stretches for greater mobility*
- *Perforated underarm panels deliver strategic ventilation*
- *Moisture Transport System wicks sweat away from the body*
- *Anti-odor technology prevents the growth of odor causing microbes*
- *Back darting for a more tailored fit*
- *Self-fabric collar with removable stays*

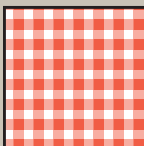
BODY/LOGO	FIRST SHIP	LAST SHIP
001 BLACK/BLACK	2/1/2015	
100 WHITE/WHITE	2/1/2015	
454 CIRRUS BLUE/CIRRUS BLUE	2/1/2015	5/15/2015
035 STEEL/STEEL	2/1/2015	5/15/2015
408 ACADEMY/ACADEMY	2/1/2015	5/15/2015
847 FIRE/FIRE	2/1/2015	5/15/2015



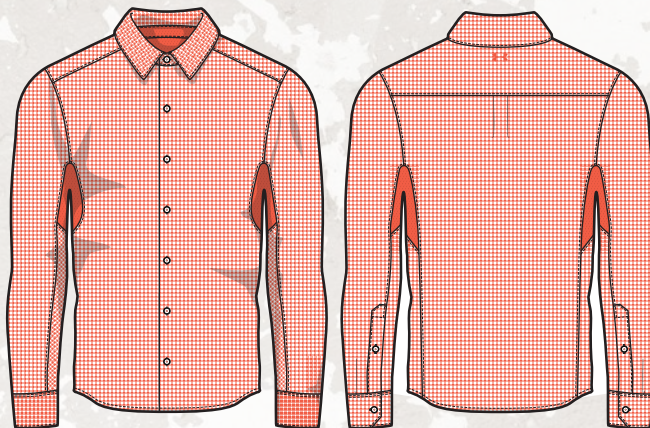
035 // GINGHAM DETAIL



408 // GINGHAM DETAIL



847 // GINGHAM DETAIL





001

100

454

035

408

847

NEW

1256300 UA PERFORMANCE CREW SWEATER

\$99.99 // SM-3XL // 70% COTTON, 20% NYLON, 10% WOOL

- Ultra-soft 14gg wool-blend fabric balances insane comfort with athletic performance
- Moisture Transport System wicks sweat away from the body
- Ribbed cuffs, collar, hem & sides for durability & fit
- Contrast stitching & embroidered logo

BODY/INSET/LOGO	FIRST SHIP	LAST SHIP	AR
175 SILVER HEATHER/TGH/STEEL	2/1/2015	5/15/2015	
005 ASPHALT HEATHER/BLACK/BLACK	2/1/2015	5/15/2015	
257 SADDLE/SADDLE/SADDLE	2/1/2015	5/15/2015	
408 ACADEMY/ACADEMY/ACADEMY	2/1/2015	5/15/2015	





175



005



257



408

allseasongear
STORM

NEW

1256299 UA MILITARY JACKET

\$149.99 // SM-3XL // 8.9 oz. 100% COTTON

- UA Storm gear uses a DWR finish to repel water without sacrificing breathability
- 2-layer bonded cotton fabric is durable & extremely comfortable
- Gusseted stretch back allows greater mobility
- 3-piece hood zips into collar
- Secure chest & hand pockets
- Adjustable cuffs

	BODY/INSET/LOGO	FIRST SHIP	LAST SHIP	AR
008	STEALTH GRAY/WHAM/STEALTH GRAY	2/1/2015	5/15/2015	
308	RIFLE GREEN/SADDLE/RIFLE GREEN	2/1/2015	5/15/2015	





008



308

UNDER ARMOUR® PERFORMANCE
SPRING/SUMMER 2015



MIX

Paper from
responsible sources

FSC® C014961