

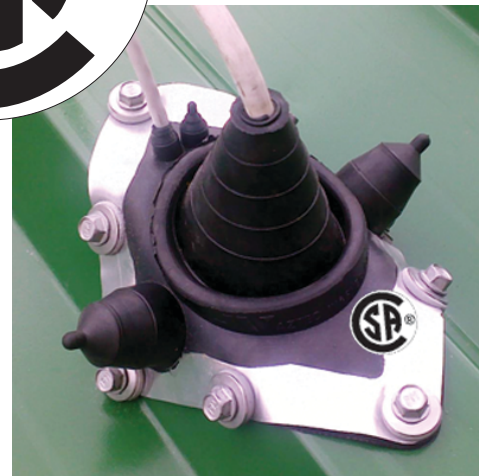
# Master Flash®

Master Flash®  
Roof Pitch Calculator



2/2016

**THE ONLY EPDM FLASHINGS TO  
HAVE **CSA** APPROVAL!**



Sealing pipes, cables, conduit, wire, solar, refrigeration lines, venting. etc.,,



Aztec Washer Company 13821 Danielson Street, Poway, CA 92064  
1.800.WASHER 5 (927-4375) • Ph: (858) 513-4350 • Fax: (858) 513-4305 • info@aztecwasher.com • www.aztecwasher.com

# **Master Flash**

Sealing pipes, cables, conduit, wire, solar, refrigeration lines, venting. Etc.,.



### ISO Quality, Price & Availability

ADVANCED OZONE RESISTANCE tested to...	EPDM 70 hour @ 500 pphm
HIGH TEMPERATURE RESISTANCE Tested to	Intermittent Continuous
	+135°C (+275°F) +100°C (+212°F)
LOW TEMPERATURE RESISTANCE tested to...	- 55°C (-67°F)
COMPRESSION SET Maximum...	25%

\*Complete specification data and testing methods are available upon request.



### Design Excellence

Aztec's flexible design meets all roofing needs. Sleeve flexibility accommodates vibration and pipe movement caused by expansion contraction. The soft aluminum base easily conforms to most metal roof profiles.



### Weather Protection

Made of EPDM, these flashings are compounded specifically for maximum resistance to weathering due to ozone and ultraviolet light.



### Base Flexibility

The base is designed to form a seal on most panel configurations and roof pitches regardless of pipe location.



### Easy On-Site Customization

Fast, one piece construction allows for easy on-site installation in usually 5 minutes.



### Modification Made Simple

Easy to see pipe diameters make for painless on-site installation.



# Certificate of Compliance

**Certificate:** 2513268

**Master Contract:** 252540

**Project:** 2762302

**Date Issued:** November 3, 2014

**Issued to:** Aztec Washer Inc.  
13821 Danielson street  
Poway, CA 92064  
USA

*The products listed below are eligible to bear the CSA Mark shown*



*Alison Kwok*

**Issued by:** Alison Kwok

## **PRODUCTS**

**CLASS 8012 01 - BUILDING PRODUCTS AND MATERIALS - - Roof Flashing**

Roof flashing models EA101BA, MFaa1BA, MP051BA, MP101BA, RDbb1BE, RF101BP, RF101BP-SQ, RF101BS-RD, RF201BP, RF201BP-SQ, RF201BS-RD, RF301BP, RF301BS-RD, SMP-MR101BA, SQ081BA, SQcc1BA, EMC101BS, RS051/101/201BA.

Note:

- Installation to be in accordance with the national and local building codes.
- "aa" may be 20, 30, 40, 50, 60, 70, 80 90 or 95
- "bb" may be 10, 20, 30, 40, 50, 60, 70, 80 or 90
- "cc" may be 05, 10, 20, 30, 40, 50, 60, 70, 80, 90 or 95

## **APPLICABLE REQUIREMENTS**

Technical Information Letter (TIL) MSE-62 - Roof flashings for various roof penetration configurations and sizes

Product Names:

Extreme Angle • Multi-Flash • Multi-Port • Universal (Round Base) • #1 Retrofit (Square Base)  
#1 Universal Retrofit (Round Base) • #2 Retrofit (Square Base) • #2 Universal Retrofit (Round Base)  
#3 Retrofit (Square Base) • #3 Universal Retrofit (Round Base) • Solar Multi-Port MR  
Standard (Square Base) • Square Vent • Electrical Mast Connection • #1 Residential • #2 Residential

# Master Flash®

20  
YEAR  
WARRANTY



**SEAL IT RIGHT  
THE FIRST TIME!**

## Standard Master Flash®

20  
YEAR  
WARRANTY



- Compounds / EPDM • 13 Sizes • 10 Colors
- Pipe Range: 1/8" to 28-1/2" (3-723mm) diameter pipes.
- Easy on-site installation in usually 5 minutes.
- Sleeve flexibility accommodates vibration and pipe movement caused by expansion contraction.
- The soft aluminum base easily conforms to most metal roof profiles.
- Pipe diameters can be seen clearly for proper pipe fitting.



## Extreme Angle Master Flash®

20  
YEAR  
WARRANTY



### "Specifically Designed For Any Extreme Roof Pitch"

- Compounds / EPDM
- Pipe Range: 1/4" to 5-3/4" (6-146mm) • Base: 11" (279mm)
- Easy on-site installation in usually 5 minutes.
- The built in 40° degree pitch allows to handle any extreme roof pitch (35° - 65°)
- Sleeve flexibility accommodates vibration and pipe movement caused by expansion contraction.



## Multi-Flash Master Flash®

20  
YEAR  
WARRANTY



### "Two Flashings in one"

- Compounds / EPDM • 9 Sizes
- Pipe Range: 7/8" to 28-1/2" (22-723mm)
- Smooth cut is intended to eliminate use of razor blades.
- Stainless steel gripper to secure a retro custom fit.



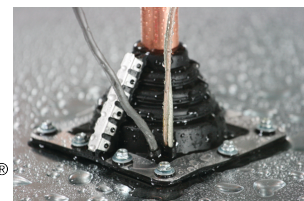
## Multi-Port Master Flash®

20  
YEAR  
WARRANTY



### "Standard or a Retrofit Applications"

- Compounds / EPDM
- Pipe Range: 1/4" to 2-3/4" (6 - 70mm)
- 4 Port Range: 1/4" (6mm) lines
- Base: 4-1/2" (114mm)
- 4 ports for cables or wires per flashing.
- Single stainless steel gripper to secure retrofit applications.



## Retrofit Master Flash®

20  
YEAR  
WARRANTY



### "For your Retrofit Applications"

- Compounds / EPDM • 3 Sizes
- Pipe Range: 1/2" to 16-1/4" (12-412mm)
- Plastic zip tie and fastener snaps Included.



## Universal Master Flash®

20  
YEAR  
WARRANTY



- Compounds / EPDM • 9 Sizes • 11 Colors
- Pipe Range: 1/4" to 19" (6 - 482mm)
- Easy on-site customization can accommodate all normal installations.



## Universal Retrofit Master Flash®

20  
YEAR  
WARRANTY



- Compounds / EPDM • 3 Sizes
- Pipe Range: 3/4" (19mm) to 10" (254mm)
- Fast, one piece construction allows for easy on-site installation in usually 5 minutes.

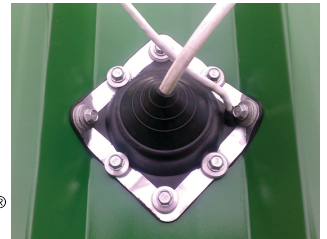


## Middy Master Flash®



### "2 Port Design" Multiple Functions

- Compounds / EPDM
- 1 Center Port Pipe Range: 0" - 2" - (0 - 50mm)
- 1 Side Port Pipe Range: 3/8" (9.6mm) pipe / cable
- Base: 3-3/4" (95mm)

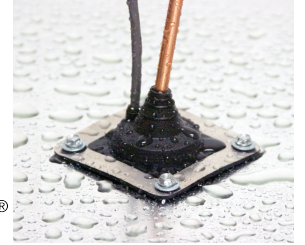


## Mini-Port Master Flash®



### "2 Port Design" Handling Many Jobs

- Compounds / EPDM
- 1 Center Port Pipe Range: 0" - 1-15/16" (0 - 49mm) pipe / cable
- 1 Side Port Pipe Range: 3/8" (9.6mm) pipe / cable
- Base: 3" (76mm)
- The soft aluminum base easily conforms to most metal roof profiles.



## Solar Multi-Port - MR Master Flash®



### "5 Port Design" for the Metal Roofing Industry

- Compounds / EPDM
- 1 Center Port Pipe Range: 0" - 1-15/16" (0 - 49mm) Pipe
- 2 Side Ports Pipe Range: 3/8" (9.6mm) pipe / cable
- 2 Side Ports Pipe Range: 3/4" (20mm) pipe / cable
- 4-1/2" (114mm) Base
- 4 ports for cables or wires per flashing to accommodate copper pipe and electrical cabling



## Square Vent Master Flash®

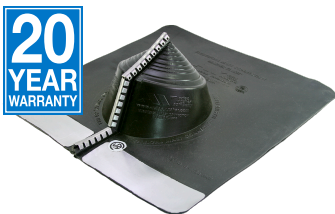


### "For Square Pipe Applications"

- Compounds / EPDM • 2 Sizes
- Pipe Range: 2-1/2" to 5" (63-127mm)
- Made to withstand the damaging effects of ultraviolet light and ozone.
- Easy Install plastic snaps Included
- Sleeve flexibility accommodates vibration and pipe movement caused by expansion/contraction.



## Electrical Mast Connection Master Flash®

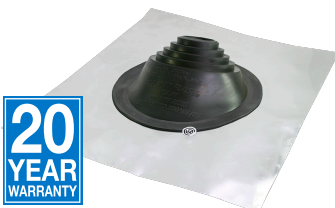


### "Designed For Residential Roof Applications"

- Compounds / EPDM
- Pipe Range: 0" to 5-3/8" (0-136mm) • Base: 15" (381mm)
- The built in 20° pitch allows adaptability to almost any roof pitch including 45°
- Stainless steel grippers included.
- Pipe diameters can be seen clearly for proper pipe fitting.



## Residential Master Flash®

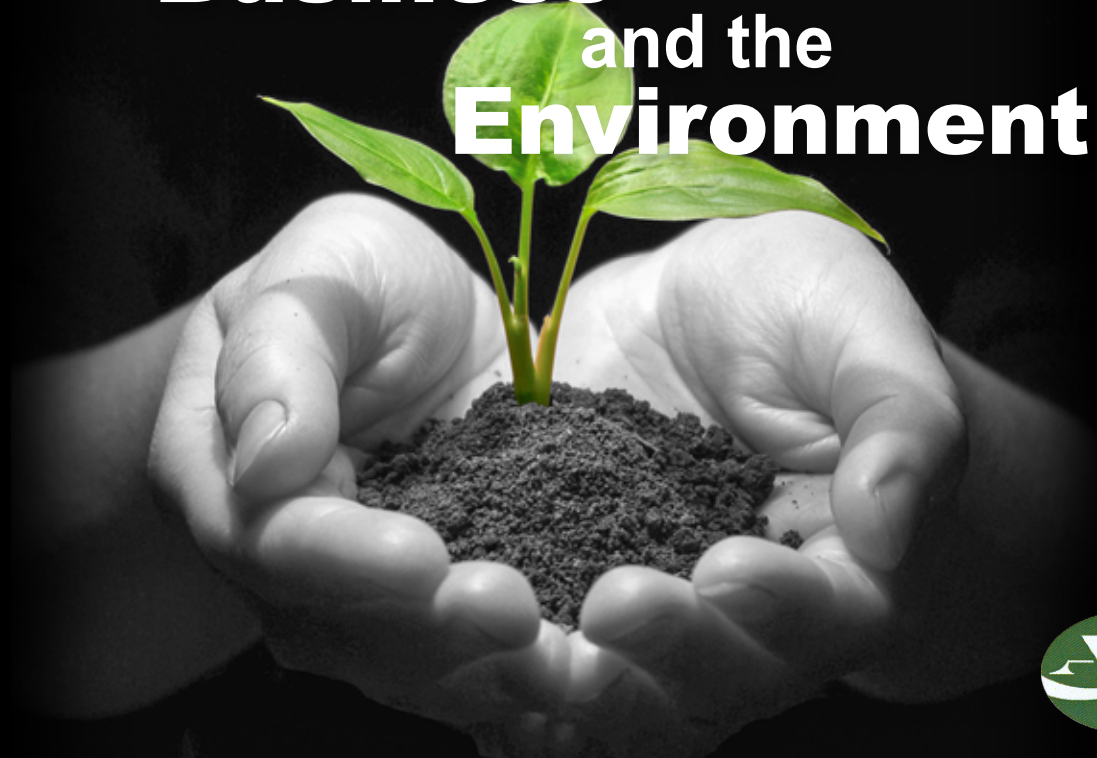


### "Environmentally safe" lead free aluminum base"

- Compounds / EPDM • 4 Sizes
- Pipe Range: 1/4" to 18" (6.3-457mm)
- The pull tab design and easy smooth tear grooving is intended to eliminate razor knives and allow for a circular hole.
- The built in 20° pitch allows adaptability to almost any roof pitch including 45°
- Self extinguishing feature enables use with type "B" vents



# Conserving is good for Business and the Environment



## Aztec Washer Company Our Green Statement / Policy

On a sales trip in early 2007, a very sharp man asked how the "Green Movement" had influenced our company. Although we are a family oriented company that has always been socially and environmentally conscious, I have never been asked that question before and it prompted the following statement.

Throughout the years, **Aztec Washer Company** has continued to research and implement new policies to conserve and protect our natural resources and reduce energy consumption wherever possible. This policy is applied to our manufacturing process as well as our general use. We are proud to say that we recycle all of our scrap materials from the production process throughout packaging and shipping.

**Aztec** also designed and produced the very first and only bonded washer/screw head powder paint and assembly machine in use today. With the removal of harmful VOC's no longer a concern for **Aztec**, we chose to make this revolutionary paint line available to the rest of the world.

**Aztec** will continue to pursue new avenues for protecting the world's resources. In pursuit of those efforts, we have employed the services of an Energy Curtailment Specialist to advise new and innovative ways we can reduce energy and preserve our environment.

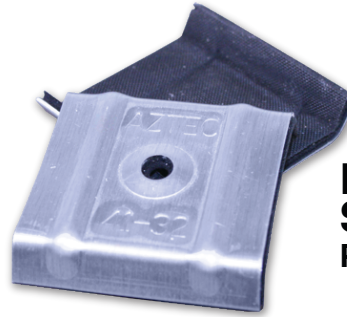
Respectfully Yours,

Matthew DeGraan C.O.O.

# Other Quality Aztec Products



**Master Seal®**



**P36  
Saddle Washers**  
Patent Pending



## **INTERNATIONAL HEADQUARTERS**

13821 Danielson Street, Poway, CA 92064 • 1-800-WASHER 5 (927-4375) • Tel: 1-858-513-4350  
Fax: 1-858-513-4305 • e-mail: [sales@aztecwasher.com](mailto:sales@aztecwasher.com) • web-site: [www.aztecwasher.com](http://www.aztecwasher.com)

• **Aztec (UK) LTD.:** Unit 55, Enterprise Trading Estate Hurst Lane, Pedmore Brierley Hill, West Midlands DY5 1TX, United Kingdom • Tel: (+44) 1384 573444 • Fax: (+44) 1384 572029  
e-mail: [sales@aztec-midlands.co.uk](mailto:sales@aztec-midlands.co.uk) • web-site: [www.aztec-midlands.co.uk](http://www.aztec-midlands.co.uk)

• **Aztec International S.A. :** ul. Bulgarska 63/65 60-320 Poznan, Poland  
Tel: (+48) 61 867 60 84 • Fax: (+48) 61 867 34 44 • e-mail: [aztec@aztec-international.eu](mailto:aztec@aztec-international.eu)  
web-site: [www.aztec-international.eu](http://www.aztec-international.eu)

• **Aztec Dichtscheiben Gmbh** Lindenstrasse 11 D-57334 Bad Laasphe Germany  
Tel: (+49) 2752 1353 • Fax: (+49) 2752 1728

• **Aztec Mexico:** Serv.y Maqs.Intls.SAdeCV. tel: (+52) 665 6542571 Fax: (+52) 665 6550796  
e-mail: [soto@smimx.net](mailto:soto@smimx.net) • web-site: [www.aztecwasher.mx](http://www.aztecwasher.mx)

• **Aztec Australasia** 15 Mickle Street Dandenong South Victoria, 3175 • Tel: (+03) 9768 2394  
Fax: (+03) 9768 2580 • e-mail: [info@aztecau.com.au](mailto:info@aztecau.com.au) • web-site: [www.aztecau.com.au](http://www.aztecau.com.au)

To see our complete product line go to [www.aztecwasher.com](http://www.aztecwasher.com)



Master Flash®, Universal Master Flash®, Multi-Flash®, and Master Seal®, are trademarks of Aztec Washer Co., Inc. For technical support call: 1-800-WASHER 5 (927-4375) (outside CA only) CA callers: (858) 513-4350