

SPRING/SUMMER 2016

2016



SIGNATURE





SIGNATURE 

- 001 UNDER ARMOUR® DNA + TECH SPECS
-  002 MEN'S SC30 COLLECTION
-  007 BOYS SC30 COLLECTION
-  012 SC30 ACCESSORIES

BRAND MISSION TO MAKE ALL ATHLETES BETTER
THROUGH PASSION, DESIGN AND THE RELENTLESS PURSUIT OF INNOVATION.

////////////////////////////////////

VISION TO EMPOWER
ATHLETES EVERYWHERE.

I WILL.

PERFORMANCE DNA

Every Under Armour® product is doing something for you: it's making you better. Following are the core pieces of DNA that deliver on this promise. The building blocks of performance.

STORM¹

Water repellant performance fabric.

STORM²

Water repellant and windproof performance fabric.

STORM³

Waterproof and windproof performance fabric.

STRATEGIC VENTILATION

Strategic venting built into garment at key points where the body dumps heat. Keeps the athlete cool in hot conditions.

4-WAY STRETCH

Lightweight fabrics with built-in 4-way stretch improve mobility and accelerate dry time.

MOISTURE TRANSPORT

Wicks moisture from the body, keeping the athlete dry.

ODOR CONTROL

Fabric treated with antimicrobial agents.

UPF

Ultraviolet protection shields your skin from the sun's harmful rays and inhibits premature aging.

360° REFLECTIVITY

The high visibility solution for training safely during low light conditions.

WIND RESISTANT

Blocks wind from penetrating to the body. Helps regulate core body temperature.

ARMOURGRIP™

Locks gear in place using a tactified compound that prevents slippage.

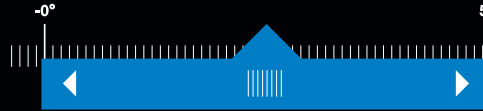
FLATLOCK SEAMING

Specialized seaming that feels smooth against the skin and prevents chafing.

GEARLINES

coldgear

BEST FOR WEATHER BETWEEN 0° AND 55°



coldgear

KEEPS YOU WARM
WHEN IT'S COLD.

allseasongear

BEST FOR WEATHER BETWEEN 55° AND 75°

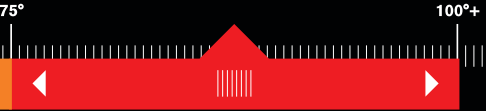


allseasongear

FOR BETWEEN
THE EXTREMES.

heatgear

BEST FOR WEATHER BETWEEN 75° AND 100°+



heatgear

KEEPS YOU COOL
WHEN IT'S HOT.

BENEFITS OF COMPRESSION

Whether it's training or gameday, your UA Compression base layer makes you better. UA Compression unleashes the power of your muscles and keeps you stronger for longer.

INCREASED POWER & STAMINA STAY STRONGER FOR LONGER

Reduces muscle vibration to lessen fatigue and maintain power output. Keeps muscles aligned correctly to increase repetitive muscle power.

ENHANCED PROPRIOCEPTION KNOW YOUR BODY'S PLACE IN SPACE

Enhances proprioception—the body's recognition of muscle patterns and spatial awareness—to increase muscle efficiency.

FASTER RECOVERY GET YOUR MUSCLES BACK TO FULL STRENGTH FASTER

Creates a healing environment around muscles and circulatory system. Post-workout, reduces swelling, decreases soreness time and promotes muscle repair.

SUPERIOR COMFORT STAY COOL, DRY, AND LIGHT

Wicks moisture to keep you 53% lighter than cotton after 60 minutes of athletic performance. Speeds evaporation to regulate your core temperature.

SIZING AND FIT

Under Armour® Performance has already compensated in the design of its apparel to be consistent with normal (XS–3XL) sizing. Please order the size you would wear in a non-performance T-shirt or pant. All sizes are in inches.

MEN'S	SM	MD	LG	XL	XXL	3XL
Chest	34-36	38-40	42-44	46-48	50-52	54-56
Waist	28-29	30-32	34-36	38-40	42-44	46-48

BOYS	YXS	YSM	YMD	YLG	YXL
	6	7	8	10	12
Chest	24	25 1/2	26 1/2	27 1/2	28 1/2
Waist	23	23 1/2	24 1/2	25 1/2	26 1/2
Hip	25	26 1/2	27 3/4	29	30 1/2



ULTRA-TIGHT, 'SECOND-SKIN' FIT
These products fit snugly to the body providing a close, lean, and supportive fit.

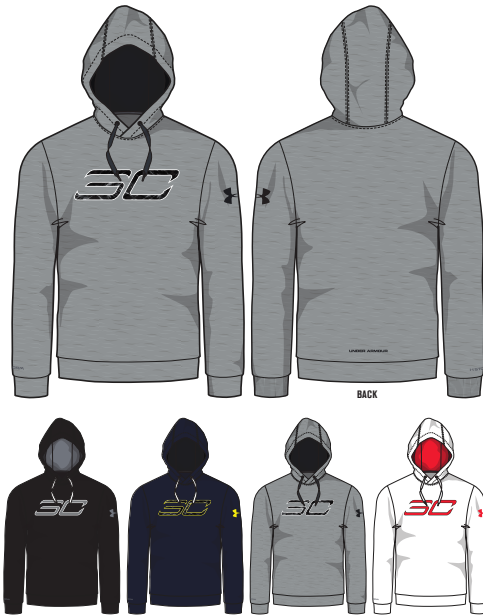


CONTOURED TO THE BODY
Designed to be very close to the body without the constriction of compression.



GENEROUS CUT, OVERSIZED FIT
Generous cut product, providing full range of motion, and a full, loose fit.

SC30 APPAREL



NEW 1276483 SC30 ESSENTIALS HOODY

\$59.99 // XS-5XL, LGT-3XLT // 6.6 oz. 100% POLYESTER

- Light fleece with a textured interior that traps added warmth without adding weight
- Moisture Transport System wicks sweat & dries fast
- Front kangaroo pocket

	BODY/INSET/LOGO	FIRST SHIP	LAST SHIP	AR
001	BLACK/STEEL/WHITE	12/20/2015	3/1/2016	
410	MIDNIGHT NAVY/RYL/SUNBLEACHED	12/20/2015	3/1/2016	
025	TRUE GRAY HEATHER/WHITE/BLACK	12/20/2015	3/1/2016	
100	WHITE/COMBAT GREEN/ROCKET RED	12/20/2015	3/1/2016	



NEW 1276795 SC30 ESSENTIALS PANT

\$59.99 // XS-5XL, LGT-3XLT // 6.6 oz. 100% POLYESTER

- Lightweight fleece with a smooth outer layer & a warm, soft inner layer
- Moisture Transport System wicks sweat & dries fast
- Covered elastic waistband with internal drawcord
- Hand pockets
- Inseam: 31"

	BODY/INSET/LOGO	FIRST SHIP	LAST SHIP	AR
001	BLACK/STEEL/WHITE	12/20/2015	6/1/2016	
410	MIDNIGHT NAVY/RYL/SUNBLEACHED	12/20/2015	6/1/2016	
002	BLACK/COMBAT GREEN/ROCKET RED	12/20/2015	3/1/2016	
025	TRUE GREY/ROYAL/ANTIFREEZE	3/20/2016	6/1/2016	

heatgear

LOOSE

11" INSEAM



NEW 1276487 SC30 ESSENTIALS SHORT

\$39.99 // SM-3XL // 100% POLYESTER

- Lightweight knit fabric is tough but breathable
- Moisture Transport System wicks sweat & dries fast
- Covered elastic waistband with internal drawcord
- Mesh hand pockets
- Inseam: 11"

	BODY/INSET/LOGO	FIRST SHIP	LAST SHIP	AR
001	BLACK/STEEL/WHITE	12/20/2015	6/1/2016	
100	WHITE/BLACK/STEEL	12/20/2015	6/1/2016	
002	BLACK/COMBAT GREEN/ROCKET RED	12/20/2015	3/1/2016	
410	MIDNIGHT NAVY/RYL/SUNBLEACHED	12/20/2015	3/1/2016	
003	BLACK/BETA ORANGE/NEON CORAL	3/20/2016	6/1/2016	
400	ROYAL/BLACK/ANTIFREEZE	3/20/2016	6/1/2016	

heatgear

LOOSE

11" INSEAM



NEW 1271969 SC30 LOCK IN SHORT

\$39.99 // SM-3XL // 5.2 oz. 100% POLYESTER

- Textured dazzle fabric delivers durability & a bit of shine
- Mesh side panels for added ventilation
- Moisture Transport System wicks sweat & dries fast
- Covered elastic waistband with internal drawcord
- Mesh hand pockets
- Inseam: 11"

	BODY/INSET/LOGO	FIRST SHIP	LAST SHIP	AR
001	BLACK/STEEL/WHITE	12/20/2015	6/1/2016	
100	WHITE/BLACK/STEEL	12/20/2015	6/1/2016	
002	BLACK/COMBAT GREEN/ROCKET RED	12/20/2015	3/1/2016	
428	ELECTRIC BLUE/MDN/SUNBLEACHED	12/20/2015	3/1/2016	
003	BLACK/NEON CORAL/ROCKET RED	3/20/2016	6/1/2016	
400	ROYAL/ANTIFREEZE/ELECTRIC BLUE	3/20/2016	6/1/2016	

heatgear

COMPRESSION

21.5" INSEAM



NEW 1272025 SC30 LOCK IN 1/4 COMPRESSION LEGGING

\$49.99 // XS-5XL, LGT-3XLT //
BODY 7.0 oz. 87% POLYESTER, 13% ELASTANE;
MESH: 3.5 oz. POLYESTER, ELASTANE

- HeatGear® fabric, with all the benefits of UA Compression, comfortable enough to be worn all day
- Stretch-mesh inseam panel & crotch deliver strategic ventilation
- 4-way stretch fabrication allows greater mobility in any direction
- Moisture Transport System wicks sweat & dries fast
- Anti-odor technology prevents the growth of odor causing microbes
- Engineered elastic waistband with ARMOUR wordmark
- Contrast lower leg
- Inseam: 21.5"

	BODY/INSET/LOGO	FIRST SHIP	LAST SHIP	AR
001	BLACK/BLACK/WHITE	12/20/2015	6/1/2016	
100	WHITE/BLACK/WHITE	12/20/2015	6/1/2016	
002	BLACK/ELECTRIC BLUE/ANTIFREEZE	12/20/2015	3/1/2016	
004	BLACK/WHITE/ROCKET RED	12/20/2015	3/1/2016	
003	BLACK/ROCKET RED/ROCKET RED	3/20/2016	6/1/2016	

SC30 PERFORMANCE

allseasongear

LOOSE



NEW 1272011 SC30 HEATSEEKER WARM-UP JACKET

\$99.99 // XS-5XL, LGT-3XLT // BODY: 7.0 oz. 100% POLYESTER; PANELS: POLYESTER, NYLON

- Durable knit fabric with a smooth face & a soft inner to trap warmth
- Mesh arm panels with a light, translucent woven overlay
- Moisture Transport System wicks sweat & dries fast
- Back venting
- Secure hand pockets
- Iridescent logos & detailing

	BODY/INSET/LOGO	FIRST SHIP	LAST SHIP	AR
001	BLACK/BLACK/BLACK	12/20/2015	3/1/2016	
035	STEEL/MIDNIGHT NAVY/ELECTRIC BLUE	12/20/2015	3/1/2016	
002	BLACK/COMBAT GREEN/ROCKET RED	12/20/2015	3/1/2016	

allseasongear

LOOSE



NEW 1272014 SC30 HEATSEEKER WARM-UP PANT

\$84.99 // XS-5XL, LGT-3XLT // BODY: 7.0 oz. 100% POLYESTER; PANELS: POLYESTER, NYLON

- Durable knit fabric with a smooth face & a soft inner to trap warmth
- Mesh side panels with a light, translucent woven overlay
- Covered elastic waistband with internal single-loop drawcord
- Hand pockets
- Tapered legs
- 7" leg zips
- Inseam: 31"

	BODY/INSET/LOGO	FIRST SHIP	LAST SHIP	AR
001	BLACK/BLACK/BLACK	12/20/2015	3/1/2016	
035	STEEL/MIDNIGHT NAVY/ELECTRIC BLUE	12/20/2015	3/1/2016	
994	COMBAT GREEN/BLACK/ROCKET RED	12/20/2015	3/1/2016	

heatgear
FITTED



NEW 1272003 SC30 HEATSEEKER SHOOTING SHIRT

\$74.99 // XS-5XL, LGT-3XLT // BODY: 6.0 OZ. POLYESTER, ELASTANE; MESH: 4.3 OZ. 100% POLYESTER

- Insanely soft, smooth fabric for total comfort, all day long
- Closed-hole mesh panels on back & elbows deliver strategic ventilation
- 4-way stretch fabrication allows greater mobility in any direction
- Moisture Transport System wicks sweat & dries fast
- Anti-odor technology prevents the growth of odor causing microbes

BODY/INSET/LOGO	FIRST SHIP	LAST SHIP	AR
001 BLACK/BLACK/STEEL	12/20/2015	3/1/2016	
410 MIDNIGHT NAVY/SUNBLEACHED/ELB	12/20/2015	3/1/2016	
984 ROCKET RED/BLACK/BLACK	12/20/2015	3/1/2016	

heatgear
LOOSE

11"
INSEAM



NEW 1271970 SC30 HEATSEEKER SHORT

\$44.99 // SM-3XL // 100% POLYESTER

- Textured dazzle fabric delivers durability & a bit of shine
- Moisture Transport System wicks sweat & dries fast
- Covered elastic waistband with internal drawcord
- Mesh hand pockets
- Inseam: 11"

BODY/INSET/LOGO	FIRST SHIP	LAST SHIP	AR
001 BLACK/BLACK/WHITE	12/20/2015	3/1/2016	
428 ELECTRIC BLUE/MIDNIGHT NAVY/SNB	12/20/2015	3/1/2016	
002 BLACK/COMBAT GREEN/ROCKET RED	12/20/2015	3/1/2016	
035 STEEL/AMALGAM GRAY/BLACK	12/20/2015	3/1/2016	

SC30 GRAPHICS



NEW 1271987 SC30 LOGO T

\$34.99 // XS-3XL // 3.9 oz. 100% POLYESTER

- UA Tech™ fabric is quick-drying, ultra-soft & has a more natural feel
- Moisture Transport System wicks sweat & dries fast
- Anti-odor technology prevents the growth of odor causing microbes

BODY/INSET/LOGO	FIRST SHIP	LAST SHIP	AR
001 BLACK/STEEL/WHITE	12/20/2015	3/1/2016	
002 BLACK/ROYAL/SUNBLEACHED	12/20/2015	3/1/2016	
064 AMALGAM GREY/NEON CORAL	3/20/2016	6/1/2016	
428 ELECTRIC BLUE/ANTIFREEZE	3/20/2016	6/1/2016	



NEW 1271988 SC30 THREE ZERO T

\$34.99 // XS-3XL // 6.0 oz. 60% COTTON, 40% POLYESTER

- Charged Cotton® has the comfort of cotton, but dries much faster
- 4-way stretch fabrication allows greater mobility in any direction
- Moisture Transport System wicks sweat & dries fast
- Anti-odor technology prevents the growth of odor causing microbes

BODY/LOGO	FIRST SHIP	LAST SHIP	AR
001 BLACK/STEEL/WHITE	12/20/2015	3/1/2016	
100 WHITE/ELECTRIC BLUE/SNB	12/20/2015	3/1/2016	
410 MIDNIGHT NAVY/ELECTRIC BLUE/SGD	12/20/2015	3/1/2016	
002 BLACK/COMBAT GREEN/ROCKET RED	12/20/2015	3/1/2016	



NEW 1272000 SC30 COAT OF ARMS HOODY

\$69.99 // XS-5XL, LGT-3XLT // 9.2 oz. 100% POLYESTER

- Lightweight 260g French Terry has a smooth outer layer & a warm, soft inner layer
- Moisture Transport System wicks sweat & dries fast
- Hand pockets

BODY/INSET/LOGO	FIRST SHIP	LAST SHIP	AR
001 BLACK/ROCKET RED/ROCKET RED	12/20/2015	3/1/2016	
025 TRUE GRAY HEATHER/GRAPHITE/BLK	12/20/2015	3/1/2016	
410 MIDNIGHT NAVY/ELECTRIC BLUE/ELB	12/20/2015	3/1/2016	

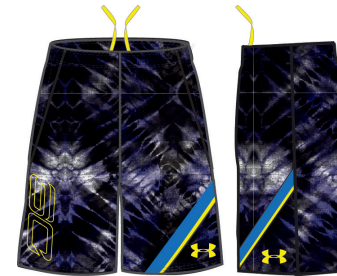


NEW 1276695 BOYS SC30 ESSENTIALS SHORT

\$29.99 // YXS-YXL // 100% POLYESTER

- *Lightweight knit fabric is tough but breathable*
- *Moisture Transport System wicks sweat & dries fast*
- *Covered elastic waistband with internal drawcord*
- *Mesh hand pockets*
- *Inseam: YMD 10" (+/- 1" per size)*

	BODY/LOGO	FIRST SHIP	LAST SHIP	AR
001	BLACK/STEEL/WHITE	12/20/2015	3/1/2016	
100	WHITE/BLACK/STEEL	12/20/2015	3/1/2016	
400	ROYAL/ANTIFREEZE	12/20/2015	3/1/2016	
771	SUNBLEACHED/ELECTRIC BLUE	12/20/2015	3/1/2016	
984	ROCKET RED/BLACK	12/20/2015	3/1/2016	



NEW 1276849 BOYS SC30 ESSENTIALS PRINTED SHORT

\$34.99 // YXS-YXL // 100% POLYESTER

- *Lightweight knit fabric is tough but breathable*
- *Moisture Transport System wicks sweat & dries fast*
- *Covered elastic waistband with internal drawcord*
- *Mesh hand pockets*
- *Inseam: YMD 10" (+/- 1" per size)*

	BODY/INSET/LOGO	FIRST SHIP	LAST SHIP	AR
001	BLACK/COMBAT GREEN/ROCKET RED	12/20/2015	3/1/2016	
400	ROYAL/ELECTRIC BLUE/SNB	12/20/2015	3/1/2016	

SC30 ESSENTIALS

allseasongear

LOOSE



NEW 1276689 BOYS SC30 ESSENTIALS HOODY

\$49.99 // YXS-YXL // 100% POLYESTER

- Lightweight fleece with a smooth outer layer & a warm, soft inner layer
- Moisture Transport System wicks sweat & dries fast
- Front kangaroo pocket

	BODY/INSET/LOGO	FIRST SHIP	LAST SHIP	AR
001	BLACK/BLACK/STEEL	12/20/2015	3/1/2016	
025	TRUE GRAY HEATHER/TGH/GXP	12/20/2015	3/1/2016	
410	MIDNIGHT NAVY/MDN/SGD	12/20/2015	3/1/2016	

allseasongear

LOOSE



NEW 1276690 BOYS SC30 ESSENTIALS FULL-ZIP HOODY

\$54.99 // YXS-YXL // 100% POLYESTER

- Lightweight fleece with a smooth outer layer & a warm, soft inner layer
- Moisture Transport System wicks sweat & dries fast
- Hand pockets

	BODY/INSET/LOGO	FIRST SHIP	LAST SHIP	AR
001	BLACK/BLACK/WHITE	12/20/2015	3/1/2016	
002	BLACK/COMBAT GREEN/ROCKET RED	12/20/2015	3/1/2016	
410	MIDNIGHT NAVY/ELECTRIC BLUE/SNB	12/20/2015	3/1/2016	

allseasongear

LOOSE



NEW 1276694 BOYS SC30 ESSENTIALS PANT

\$54.99 // YXS-YXL // 9.2 oz. 100% POLYESTER

- Lightweight fleece with a smooth outer layer & a warm, soft inner layer
- Moisture Transport System wicks sweat & dries fast
- Hand pockets
- Inseam: YMD 26.25" (+/- 2" per size)

	BODY/INSET/LOGO	FIRST SHIP	LAST SHIP	AR
001	BLACK/BLACK/WHITE	12/20/2015	3/1/2016	
002	BLACK/BLACK/ROCKET RED	12/20/2015	3/1/2016	
410	MIDNIGHT NAVY/SUNBLEACHED/SNB	12/20/2015	3/1/2016	



NEW 1271891 BOYS UA SC30 HEATSEEKER SHORT

\$34.99 // YXS-YXL // 100% POLYESTER

- Textured dazzle fabric delivers durability & a bit of shine
- Moisture Transport System wicks sweat & dries fast
- Covered elastic waistband with internal drawcord
- Mesh hand pockets
- Mesh side panels with a light, translucent woven overlay
- Iridescent logos & detailing
- Inseam: YMD 10"

	BODY/INSET/LOGO	FIRST SHIP	LAST SHIP	AR
001	BLACK/BLACK/WHITE	12/20/2015	3/1/2016	
035	STEEL/STEEL/WHITE	12/20/2015	3/1/2016	
002	BLACK/COMBAT GREEN/ROCKET RED	12/20/2015	3/1/2016	
428	ELECTRIC BLUE/MIDNIGHT NAVY/ELB	12/20/2015	3/1/2016	



NEW 1274467 BOYS UA SC30 HEATSEEKER SHOOTING SHIRT

\$44.99 // YXS-YXL // BODY: 5.1 oz. 100% POLYESTER; MESH: 100% POLYESTER

- Textured knit fabric is tough but breathable
- Closed-hole mesh panels on back & elbows deliver strategic ventilation
- Moisture Transport System wicks sweat & dries fast
- Anti-odor technology prevents the growth of odor causing microbes
- Iridescent logos & detailing

	BODY/INSET/LOGO	FIRST SHIP	LAST SHIP	AR
001	BLACK/BLACK/SILVER	12/20/2015	6/1/2016	
984	ROCKET RED/BLACK/ROCKET RED	12/20/2015	3/1/2016	
410	MIDNIGHT NAVY/ELECTRIC BLUE/SNB	12/20/2015	3/1/2016	
428	ELECTRIC BLUE/ROYAL/ANTIFREEZE	3/20/2016	6/1/2016	

SC30 ESSENTIALS



NEW 1271909 BOYS UA SC30 HEATSEEKER JACKET

\$69.99 // YXS-YXL // 100% POLYESTER

- Durable knit fabric with a smooth face & a soft inner to trap warmth
- Mesh arm panels with a light, translucent woven overlay
- Moisture Transport System wicks sweat & dries fast
- Secure hand pockets
- Iridescent logos & detailing

BODY/INSET/LOGO	FIRST SHIP	LAST SHIP	AR
001 BLACK/BLACK/BLACK	12/20/2015	6/1/2016	
035 STEEL/MIDNIGHT NAVY/ELB	12/20/2015	6/1/2016	
002 BLACK/ROCKET RED	12/20/2015	3/1/2016	
400 ROYAL/ELECTRIC BLUE/ANTIFREEZE	3/20/2016	6/1/2016	



NEW 1271911 BOYS UA SC30 HEATSEEKER PANT

\$69.99 // YXS-YXL // 100% POLYESTER

- Durable knit fabric with a smooth face & a soft inner to trap warmth
- Mesh panels with a light, translucent woven overlay
- Moisture Transport System wicks sweat & dries fast
- Covered elastic waistband with internal drawcord
- Mesh hand pockets
- Iridescent logos & detailing
- Tapered legs
- 12" leg zips & elastic cuffs
- Inseam: YMD 24.5"

BODY/INSET/LOGO	FIRST SHIP	LAST SHIP	AR
001 BLACK/BLACK	12/20/2015	6/1/2016	
035 STEEL/MIDNIGHT NAVY/ELB	12/20/2015	6/1/2016	
994 COMBAT GREEN/BLACK/ROCKET RED	12/20/2015	3/1/2016	
002 BLACK/ELECTRIC BLUE/ANTIFREEZE	3/20/2016	6/1/2016	

SC30 GRAPHICS



NEW 1272078 BOYS UA SC30 LOGO GRAPHIC T

\$29.99 // YXS-YXL // 3.9 oz. 100% POLYESTER

- UA Tech™ fabric has an ultra-soft, more natural feel for unrivaled comfort
- Moisture Transport System wicks sweat & dries fast
- Anti-odor technology prevents the growth of odor causing microbes
- Soft screen-print graphics

BODY/INSET/LOGO	FIRST SHIP	LAST SHIP	AR
001 BLACK/ROYAL/SUNBLEACHED	12/20/2015	3/1/2016	

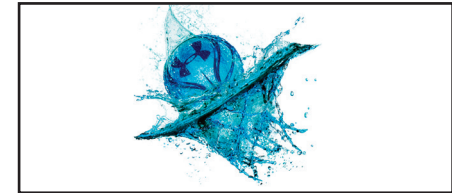


NEW 1272079 BOYS UA SC30 NEVER COUNT ME OUT T

\$24.99 // YXS-YXL // 3.9 oz. 100% POLYESTER

- UA Tech™ fabric has an ultra-soft, more natural feel for unrivaled comfort
- Moisture Transport System wicks sweat & dries fast
- Anti-odor technology prevents the growth of odor causing microbes
- Soft screen-print graphics

BODY/INSET/LOGO	FIRST SHIP	LAST SHIP	AR
400 ROYAL/TAXI/WHITE	12/20/2015	3/1/2016	



NEW 1272080 BOYS UA SC30 SPLASH DOWN T

\$24.99 // YXS-YXL // 3.9 oz. 100% POLYESTER

- UA Tech™ fabric has an ultra-soft, more natural feel for unrivaled comfort
- Moisture Transport System wicks sweat & dries fast
- Anti-odor technology prevents the growth of odor causing microbes
- Soft screen-print graphics

BODY/INSET/LOGO	FIRST SHIP	LAST SHIP	AR
100 WHITE/ELECTRIC BLUE/BLACK	12/20/2015	3/1/2016	

SC30 ACCESSORIES

STORM¹



NEW 1262140 UA SC30 BACKPACK

\$79.99 // 19" X 11" X 7.5" // CUB. VOL. 1750 CU. IN. / 28.5 L
100% POLYESTER

- UA Storm[®] treated fabric for water and abrasion resistance
- PU coated bottom panel for extra abrasion resistance
- Padded laptop and tablet sleeve
- Front H2O repellent valuables pocket
- Heatgear[®] adjustable shoulder straps with sternum clip
- 1 side zip water bottle compartment with 2 side buckle organization pockets
- 1 front zip guessted pocket for shoes or laundry
- Molle webbing out the wazoo for additional attachment points

BODY/INSET/LOGO	FIRST SHIP	LAST SHIP	AR
001 BLACK/BLACK/SILVER	C/O		
408 ACADEMY/ROYAL/TAXI	C/O		



NEW U484 UA UNDENIABLE CREW SC30

\$19.99 // SINGLE PAIR // MD, LG

- Left/Right Technology for true anatomical fit
- True Seamless Toe delivers superior comfort and reduced irritation
- Strategic Cushion protects high-impact areas of feet
- Embedded Arch Support helps reduce foot fatigue
- ArmourDry™ Material wicks moisture, accelerates evaporation
- ArmourFit[®] Support in the key arch and ankle zones for a tighter, more secure fit
- ArmourBlock[®] Technology helps prevent growth of odor-causing bacteria
- Embroidered SC logo

PRIMARY/INSET/LOGO	FIRST SHIP
615 DARK MAROON/ANTIFREEZE/MOJO PINK	1/1/2016
430 ELECTRIC BLUE/MIDNIGHT NAVY/WHITE	1/15/2016
601 BLACK/RED/WHITE	1/26/2016
083 STEEL/ELECTRIC BLUE/MIDNIGHT NAVY	4/15/2016
133 WHITE/SKY BLUE/SILVER GREY	6/1/2016

CONTACT CENTER

Corporate Headquarters 1020 Hull Street Baltimore, MD 21230	Under Armour® Apparel Returns 1010 Swan Creek Drive Baltimore, MD 21226	UA Footwear/Accessories Returns 2510 W. Walnut Avenue Rialto, CA 92376
---	---	--

CORPORATE OFFICE HOURS OF OPERATION

Monday through Friday, 8:30am – 7:00pm, EST.

UNDER ARMOUR® B2B – ONLINE ORDERING

team.underarmour.com

- 24/7 access to check inventory and place orders
- Ability to track orders and shipments
- Priority product allocation
- Faster processing time

UNDER ARMOUR® B2B – SUPPORT

B2B_support@underarmour.com

UNDER ARMOUR® RETURN POLICY

Under Armour® stands behind its gear and EXPECTS nothing less than perfection. If you have received a defective product, an incorrect size, or an incorrect order, please contact us immediately for a return authorization number so that we can quickly process your return and ensure your satisfaction.

ALL RETURNS MUST BE COMPLETED WITHIN 30 DAYS OF RECEIPT AND MUST BE IN REASONABLE CONDITION. ALL RETURNS MUST HAVE THE RA# CLEARLY MARKED ON THE CARTON. ALL RETURNS ARE SUBJECT TO A 15% RESTOCKING FEE.

Should you need to return or exchange an item, you MUST include your RA#, a copy of your invoice, and an explanation in writing as to why you are returning the item. Send your return to the marked address on your pack list. If you are exchanging merchandise, you are responsible for the cost of returning the product. Original shipping costs are non-refundable. All returned merchandise must be received in new, resalable condition.

UNDER ARMOUR® CANCELLATION POLICY

Any request for cancellation of an order for UA products must be made, in writing, through the customer's UA Sales Representative. A request to cancel an order must be made more than 30 days before the customer's original desired ship date. All cancellations are subject to UA approval.

ALL PRICES SET FORTH HEREIN ARE SUBJECT TO CHANGE WITHOUT NOTICE.

© 2015 Under Armour®. All rights reserved. All trademarks, images, photographs, logos, and graphics are owned or controlled by Under Armour®.

Confidential and business proprietary information for internal Under Armour®, Inc. use only. Reproduction is strictly prohibited.

UNDER ARMOUR® PERFORMANCE
SPRING/SUMMER 2016