

JRS ARCHITECT, P.C.

LONG ISLAND

NEW YORK

PRINCETON

ARCHITECTURE | INTERIOR DESIGN | PRESERVATION | WWW.JRSARCHITECT.COM

TABLE OF CONTENTS

JRS AT A GLANCE

ON-CALL AGREEMENTS AND PREQUALIFICATIONS

FIRM OVERVIEW

AREAS OF EXPERTISE

CORPORATE
EDUCATION
FINANCIAL
HEALTHCARE
HOSPITALITY
RETAIL

SPECIALIZATIONS

INDUSTRIAL / WAREHOUSE
MIXED USE
PRESERVATION
SURVEYING AND CONSOLIDATION
TECHNOLOGY CENTERS

CONTACT

GET IN TOUCH

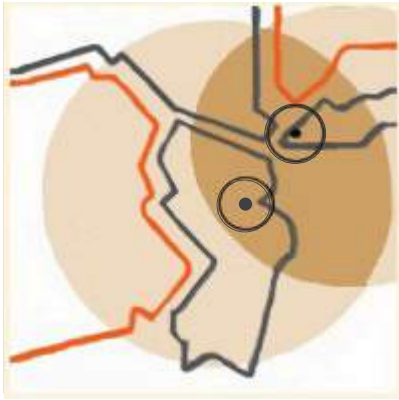
JRS ARCHITECT, P.C. IS A FULL SERVICE ARCHITECTURAL FIRM

that also provides interior design, programming, project management and preservation services. Since the company's inception in 1986, JRS has been directly involved with the design and construction of corporate offices, banks, retail stores, school projects, healthcare facilities, restaurants, hotels, industrial/warehouse spaces and mixed use. The firm has served a clientele that ranges from Fortune 500 companies to start-ups. Our staff of professionals prides themselves on client satisfaction, a commitment that is understood by the firm's ongoing referral business.

JRS AT A GLANCE



FOUNDED IN 1986 BY
JOHN R. SORRENTI, FAIA



SERVES THE NY, CT, NJ
AND PA MARKETS FROM
OUR LONG ISLAND AND
PRINCETON OFFICES



STAFFED WITH
LEED ACCREDITED
PROFESSIONALS



GENERATES 90% OF
PROJECTS FROM
EXISTING CLIENTS



COMPRISED OF OVER TWENTY INDIVIDUALS
AND HEADED BY THREE ACTIVE PRINCIPALS:
JOHN R. SORRENTI, FAIA, PRESIDENT
ALEXANDER HADJIYANE, AIA, SENIOR VICE PRESIDENT
ROBERT MORRISEY, AIA, VICE PRESIDENT



KNOWN FOR INNOVATIVE AND CREATIVE
SOLUTIONS BORN OUT OF SOLID EXPERIENCE
AND INDUSTRY KNOWLEDGE

JRS AT A GLANCE

CURRENT ON-CALL AGREEMENTS:



8 Consecutive yrs.



29 Consecutive yrs.



19 Consecutive yrs.



17 Consecutive yrs.



12 Consecutive yrs.



5 Consecutive yrs.



BankUnited

Since 2013



KEAN UNIVERSITY

6 Consecutive yrs.



Since 2014



6 Consecutive yrs.

PREQUALIFICATIONS:



DPMC & NJSDA

- Architecture
- Barrier Free / ADA Design
- Construction Field Inspection
- Estimating / Cost Analysis
- Historic Preservation
- Interior Design / Space Planning
- Value Engineering
- Roof Consultant
- Feasibility Planning
- Site Planning
- Project Management



Since 2009



Since 2010



Since 2014

FIRM OVERVIEW

AREAS OF EXPERTISE



FULL SCOPE OF SERVICES from Project Cost Analysis, Construction Evaluations to Planning



INTERIORS DIVISION offers Space Planning, Furnishings & Finishes Selection and Lighting Design to Standards Programming.



PLANNING SERVICES from Demographic Evaluations, Surveying and Consolidation, to 3d Site Massing Studies.



REPRESENTATIVE RECOGNITIONS

TOP 200 INTERIOR

Top 200 Interior Design Firms in the US by *Interior Design* magazine since 1989

TOP 40 HEALTHCARE

Top 40 Healthcare Interior Design Firms in the US by *Interior Design* magazine 2005 - 2011

AMERICAN SCHOOL & UNIVERSITY

2011 *American School & University* Education Interiors Showcase; Common Areas for Mandell School

LONG ISLAND AIA ARCHI AWARDS

NEW YORK CONSTRUCTION AWARD OF MERIT

Founder, John R. Sorrenti currently serves as Chancellor of American Institute of Architects' College of Fellows and is an Extended Board Member of the New York State Education Board of Architecture where he served previously as Chair.

FIRM OVERVIEW

JRS Architect, P.C. is a full service architectural firm that also provides interior design, programming, project management and preservation services. Since its inception in 1986, JRS has been directly involved with the design and construction of facilities for Fortune 500 companies, financial institutions, education, healthcare and retail organizations.

JRS has two offices located in Mineola, NY and Princeton, NJ. Staffed with over 20 employees, the average tenure is 13 years with over half the staff having 10 plus years of service.

Our firm's team of senior professionals is qualified in all areas of programming and phasing of building renovations and has an over 30-year track record in the successful completion of a full range of these projects.

We are known for creative renovations. JRS can transform a structure for a different use, restore and extend a valued building, create a complete new look for both interiors and exteriors and recast the use of space to match 21st century needs and work styles.

Ninety percent of our work, high by industry standards, is from our existing client base. Many of these clients have been partnering with JRS for over 20 years, confirming our focus on building relationships as well as our multi-disciplinary approach to problem solving.

Our aim is to produce functional and aesthetically pleasing design within the context of a client's needs, including budgetary guidelines. This direction has allowed JRS to embrace projects from the conservative to the cutting edge.

MISSION

The foundation of JRS' 30 plus year success story is an unswerving adherence to our Project Management Approach. This is a well thought out process in which each staff member is personally trained. It is a philosophy based on accountability, quality control, active coordination with all project vendors and contractors with a strong focus on value engineering and adherence to established schedules.

JRS continuously researches and identifies the newest materials and technologies that can significantly impact the value we bring to any project. Every client can expect their team to be

fully conversant with this expanding knowledge and to pass these benefits to them.

A testament to this thinking is the integration of sustainable design into projects. As professionals who pledge to create high-performance environments for our clients, JRS has a firm wide commitment to sustainable, green design and architecture. With our LEED accredited staff, we offer clients choices to enhance the eco-system, increase worker productivity and health, simplify maintenance and reduce operating costs.

FIRM OVERVIEW

OUR BUSINESS IS BUILT ON



Providing responsive service to every client by maintaining open lines of communication at the Principal level



Fully understanding a client's business model and developing a schedule sensitive to their unique operational needs



Choosing team members for each assignment with **attention to special credentials, personal skills and successful track records** with similar projects



Being a proactive client advocate anticipating problems before they become costly mistakes

FIRM OVERVIEW

OUR VIEW

Our directive is to thoroughly understand the client's operation and together plan an environment that promotes productivity and worker satisfaction. To achieve that, our first step is to develop a comprehensive program, which begins with seeking answers to critical questions:

What are your organization's mission, philosophy, structure, goals?

What is your organization's direction regarding sustainable design?

Who are your employees and what are their tasks?

How do departments interact and, most importantly, how do you plan to grow the business and shape the future?

Next, we begin the creative process, translating all this data and information into an architectural vision. Our design team creates concept drawings allowing you to visually evaluate specific solutions. Based on your input and guidance, the JRS team walks you through the entire process, creating a design direction that satisfies all of your criteria.

There are many tools and assets we bring to bear along the way. Our sample library - one of the most comprehensive in the industry - allows us to select the precise materials that will optimize your design's look and functionality.

JRS can then use 3D modeling to take you on a virtual "tour" of the new environment allowing you to experience the look, feel, texture, color and dimensions of the finished space. At every stage

we provide bridges between creative thinking and real-world needs. Finally, we produce complete and detailed contract documents that encompass every aspect of the building and engineering phases. JRS is also available to manage the entire construction process to your advantage.

At your option, our professionals will write the specifications, oversee bidding, expedite building permits, manage cost-control, specify furniture, and even commission artwork. Our in-depth knowledge of code requirements and local building departments enables us to expedite the permit process. At every level we monitor progress and devise solutions, ensuring an on-time and on-budget outcome with JRS as your single point of responsibility.

OUR COMMITMENT

PROFESSIONALISM

The firm represents a highly qualified and professional group of architects skilled in performing detailed surveys, assessments, recommendations, cost estimates, design documents for construction and construction services under the leadership of a Project Architect. The team is intimately familiar and experienced with field investigations, industry codes and standards, federal, state and local regulatory agencies, market conditions, operation and maintenance requirements and life safety considerations.

JRS IS NOTED IN THE INDUSTRY FOR LEADERSHIP IN DESIGN

RECOGNIZED CREATIVITY

JRS is noted in the industry for leadership in Design. The work of our company is frequently honored by the architecture and interior design industries and by the media. For example, JRS has received several prestigious Long Island AIA Archi Awards. These awards were based on the interior design of retail spaces for leading local financial institution. We have also been recognized by the *American School & University Education Interiors Showcase* for common areas and McGraw Hill's New York Construction Award of Merit. *Interior Design* magazine has nationally recognized JRS Architect, P.C. in "The Top 200

Giants" of Interior Design. For several years *Interior Design* magazine also recognized JRS Architect within their "The Top 40 Healthcare Giants" between 2005-2011. Additionally, Zweig-White has named JRS Architect, P.C. to the Zweig Letter Hot Firm List for two consecutive years.

INNOVATIVE THINKING

JRS Architect, P.C. educates our staff to be alert to new configurations and solutions that will relate to the site, existing structure, budget, time frame and future agenda. A thorough grounding in the client's programming underscores our team's ability to creatively analyze the best use of space to fulfill company goals.

Our knowledge of and access to nontraditional materials offer extraordinary scope for a sustainable building's beauty, economy, longevity and ease of maintenance. The JRS research staff pays close attention to where materials come from, coupled with direct manufacturer relationships to guarantee that each client has these imaginative options continuously available. With green design becoming an expected alternate, JRS' clients can now reap the rewards of our ongoing study, preparation, and commitment to sustainable design.

KNOWLEDGE

Many of our staff members are registered architects with a Bachelor degree in Architecture or Architectural Technology and are members of the American Institute of Architects (AIA), reflecting JRS Architect, P.C.'s emphasis on

JRS PROMOTES CONSISTENCY, COMPLETENESS AND QUALITY

continued earning and contribution to the profession. Members of our staff are also LEED Accredited Professionals. Founder/President John R. Sorrenti, FAIA has earned the prestigious designation of being the Chancellor of AIA's College of Fellows, previously serving in various leadership roles with the Executive Committee as well as National Chair of the AIA College of Fellows Regional Representative. He has held various senior positions in the national and state AIA and is looked to by his peers for ideas and information on subjects ranging from building safety and ADA conformity to project delivery methods and marketing. He holds Masters Degrees in both Architecture and Business Administration.

He recently completed his ten year term on the New York State Education Board of Architecture where he also served as Chair. He was Regional Director on the National Council of Architectural Registration Board (NCARB) for three years. Serving as a lobbyist for legislative issues, John has achieved a reputation for quality of leadership.

In 1991, on behalf of the AIA, John helped to form the guidelines for the Americans with Disabilities Act and in 1993, assisted with the New York City ADA code.

John also served on the National Architectural Accrediting Board committee for college accreditation programs and has performed reviews of his peers for the American Council of Engineering Consultants. His experience continues to shape and differentiate JRS Architect, P.C. and is reflected in the firm's practical and grounded approach to our work.

CONSISTENCY, COMPLETENESS, & QUALITY

JRS promotes consistency, completeness and quality by utilizing standard forms, data sheets, questionnaires and report formats while reviewing drawings, performing field investigations, conducting interviews or preparing building and site reports. Quality control is maintained by periodically conducting audits of procedures and processes, making sure critical steps are being taken for consistent and comprehensive services.

Because the same team develops the project from concept to completion, the original intent is never compromised - rather, it gathers strength and integrity. Working in unison inspires team members to do their best work. For example, when Interior Design contributes ideas at an early stage, the insights can influence planning of the exterior design. It is our experience that this interplay evokes the best total design solutions. The entire JRS staff is committed to the same goal: create space that fulfills the client's needs, and satisfies the highest standards of beauty and sustainability.

FIRM OVERVIEW

OUR SERVICES

ARCHITECTURE

Programming
Project Feasibility Studies
Conceptual Schematics & Final Design
Handicap Accessible
Sustainable Design
Presentation Drawings
Signage and Graphic Design
Project Budget & Cost Estimating
Evaluation & Design
Value Engineering
3D Modeling
Building Information Modeling
Construction Documents & Specifications
Contract Negotiations
Construction Administration

INTERIOR DESIGN

Art Consultation
Furniture Design
Furnishing & Finishes
Furniture Inventory
Lighting Design
Procurement & Move Management
Space Planning
Standards Programs

PLANNING

3D Site Massing Studies
ADA Review
Capital Improvement Plans
Code Review & Compliance
Demographic Evaluation
Due Diligence
Land Use Analysis
Long Range Master Planning
Site Design
Surveying & Consolidation
Zoning Review

CORE SERVICES

Architectural Design
- Interior
- Exterior
- De Novo
- Renovations
- Renderings

Project / Construction Management
Site Analysis & Design

SPECIALIZATIONS | Accessory Spaces | Lobbies | Start - Up Banks | Surveying & Consolidation | Sustainability | Technology Centers

PRESERVATION

Preservation Design & Planning	Assessment & Documentation
Adaptive Reuse / Interior Restoration	Building Pathology / Forensic Investigation
Plans / Specification / Cost Estimating	Architectural Conservation & Repair
Project / Construction Management	Implementation of Restoration Trade

FIRM OVERVIEW

JRS ARCHITECT, P.C. PROVIDES THE FOLLOWING ARCHITECTURAL AND DESIGN EXPERTISE TO OUR CLIENTS

BRAND DEVELOPMENT

JRS has a successful track record of implementing design concepts that support or evolve brand identity. Working collaboratively with clients across market sectors, we create environments that elicit strong attractions to their business or organizations. Our focused methodology results in space that is unified, dynamic and visually memorable.

PROJECT MANAGEMENT

Our experienced managers coordinate every aspect of your project including site and space planning; furniture, carpeting and window treatment installations and inventory; move-in coordination. We provide a full range of project and construction management services including on-site field managers, regularly scheduled project meetings, construction scheduling and negotiating.

STRATEGIC SPACE PLANNING & WORKPLACE STRATEGIES

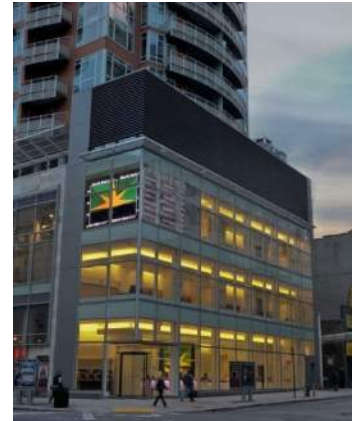
We provide planning services to increase the utilization of under performing facilities and reduce occupancy costs. Our approach encompasses analysis of space needs and delineation of unnecessary square footage. Various space scenarios are explored and compared against business objectives and work place initiatives. JRS establishes renovation needs and costs, and creates a phasing strategy to perform the recommended work. In-depth meetings with our clients determines how their space is to be used resulting in a design tailored for specific workflow and aesthetic standards. Zoning and code compliance issues are identified and detailed construction documents are produced to complete the process. The objective is to create an economical, easily managed space that will remain technologically relevant for years to come.

DESIGN EXCELLENCE

Our award-winning design team uses a systematic approach to walk clients through the creative process, uncovering their business needs and goals, and integrating these to inform a design that is unique and impactful. We conduct a thorough site analysis taking into account the neighborhood and context of the assignment. Interior conditions are also fully assessed. We then work closely with each customer to unravel the myriad of color, furnishings, and materials available to them, pointing to selections that will meet their optimal vision for the project.

AREAS OF EXPERTISE

CORPORATE



PARTIAL CLIENT LIST

ADP	Girl Scouts of Nassau County	New York Life Insurance Company
AIG, Inc.	Grubb & Ellis	Newsday
Albanese Corp.	GQ Magazine	Northrop Grumman
American Heart Association	Hampshire Real Estate Companies	Olsten Temporary Services
Arrow Electronics	Hapag Lloyd	Phillip Morris
Avis Rent-a-Car Systems	House & Garden Magazine	Reckson Associates
B&E Systems	IBM Federal Credit Union	Southern Wine & Spirits of America
BMG Entertainment	International Paper	Teachers Federal Credit Union
Cablevision Systems Corp.	JPMorgan Chase	Telephonics Corporation
Capital One Bank	Lincoln Equities Group	The Treeline Companies
Catlin Group Limited	Major League Soccer	Union Bank of Switzerland
Century 21	Metropolitan Life Insurance Co.	United States Postal Service
Citicorp	MTV	Wachovia Securities
Coca-Cola	NAI Fennelly	We're Associates
Conde Nast Publications	Nassau County Federal Credit Union	Widex, USA
Covance	National Paper Trade Association	William Penn Life Insurance Co.
DuPont Pharmaceuticals	Navicore Solutions	Vanity Fair Magazine
ESL Federal Credit Union	New York Community Bank	
Esselte Corporation		
First Fidelity Bank, NA, NJ		

EDUCATION



PARTIAL CLIENT LIST

Adelphi University	Hauppauge School District	Northport Schools
Chase	Kean University	Ocean County College
Clarke School	Mandell School	Poly Prep County Day School
DeVry Institute	Montclair State University	Rodeph Sholom
Dowling College	Mount Sinai School of Medicine	Rutgers, The State University of New Jersey
Friend's Seminary	Nassau Community College	Seton Hall University
God's Love We Deliver	New Jersey City University	St. Joseph's College
The Goddard School	New York Institute of Technology	Suffolk Community College
Great Neck School District	NYS School Construction Authority	SUNY Stony Brook

FINANCIAL



PARTIAL CLIENT LIST

AIG, Inc.	Credit Union of New Jersey	New York Community Bank
ALMA Bank	Esquire Bank	Peapack-Gladstone Bank
Banco Popular	Fidelity Investments	Sperry Associates Federal Credit Union
Bank of America	First Fidelity Bank, NA, NJ	State Bank of Long Island
Bank of New York	Hanover Community Bank	Teachers Federal Credit Union
Barclays Bank of New York	Hudson City Savings Bank	The Westchester Bank
Bethpage Federal Credit Union	IBM Federal Credit Union	Union Bank of Switzerland
Capital One Bank	Island Federal Credit Union	Valley National Bank
Citicorp	JPMorgan Chase	Wachovia Securities
Community Federal Savings Bank	Nassau Financial Federal Credit Union	

HEALTHCARE



PARTIAL CLIENT LIST

American Heart Association	Melville Biologics	St. Luke's Lutheran Hospital
Association for the Help of Retarded Children	Mount Sinai Medical Center	St. Vincent's Hospital
Berke Eye Care	Nastech Pharmaceutical	Siemens Medical Systems
Brunswick Hospital	Neurological Assoc. of LI	South Nassau Communities Hospital
Downstate/Cornell Medical Center	Neurological Surgery, P.C.	SUNY - Stony Brook Medical Center
Flushing Hospital	New York Methodist Hospital	Syracuse Medical Center
Gastrointestinal Assoc. of LI	NY Presbyterian Hospital/ Columbia Medical Center	Time-Cap Labs
Gentiva Health Services	NYU Medical Center	United Cerebral Palsy of New York
Harlem Hospital Center	North Shore - LIJ Health System	Veterans Administration Hospital Manhattan, NY, Indianapolis, IN
LabCorp	Phillips Laboratories	Vitex Laboratories
Lutipold Pharmaceuticals	Pickering Medical Facilities	Winthrop University Hospital
Lutheran Medical Center	Pt. Pleasant Veterinary Clinic	

HOSPITALITY



PARTIAL CLIENT LIST

Anchor Motor Inn

The Carving Station Deli

Chambers Hotel

Club Metro

Garden City
Recreation Department

Garden Grill

Hempstead Golf &
Country Club

JPMorgan Chase

Marriott Corporation

Monsoon Restaurant

North Fork Bank

Pretzel Shop

Prime Restaurant

Suki Japan

Tellers Restaurant

The Treeline Companies

Veneto Corporation

RETAIL



PARTIAL CLIENT LIST

Calphalon

DeJana Corporation

Gant USA

Garden Grill

Jenny Craig

JLA Home

Maki

MJC Electric, Inc.

Natural Market

Polimeni International, LLC

Pretzel Shop

Ralph Lauren

Silverstein Gallery

Skyline Management

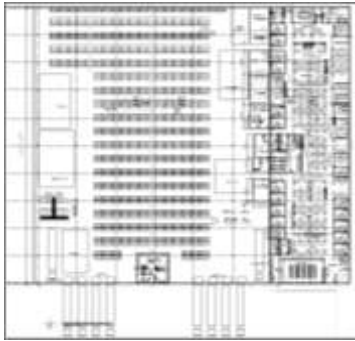
Swarovski

Veneto Corporation

Westfield Corporation

SPECIALIZATIONS

INDUSTRIAL / WAREHOUSE



INDUSTRIAL / WAREHOUSE

PARTIAL CLIENT LIST

BBH

Cablevision

Hall Flooring

JPMorgan Chase

Northrop Grumman

Qosina

Telephonics Corporation

Widex, USA

MIXED USE



PARTIAL CLIENT LIST

Friars Club

NGKF

Safavieh

JLL

Polimeni International, LLC

Westfield Corporation

NAI Fennelly



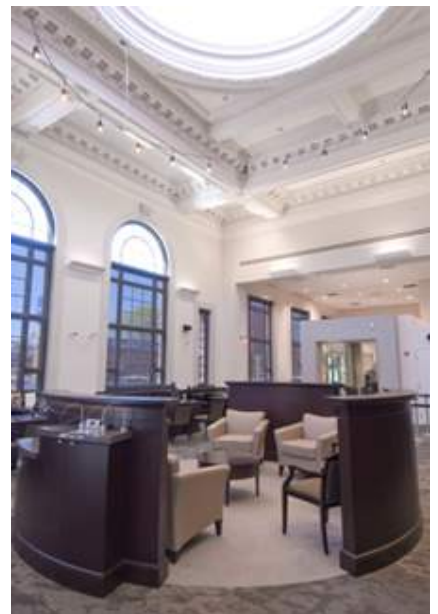
OVERVIEW

Design Preserve Build Architecture, PLLC (DPB) is a wholly owned subsidiary of JRS Architect, P.C. offering historic preservation services for institutional, corporate and residential properties as well as monument conservation throughout New York City, Long Island and New Jersey.

A distinguishing characteristic of DPB is its team of core consultants, highly experienced professionals, who are able to provide comprehensive services from planning to implementation as well as coordination of necessary expertise to fulfill the requirements of historic preservation projects. These resources are highly versatile and have substantial industry networks that provide additional expertise when required.

AREAS OF FOCUS

PRESERVATION



REPRESENTATIVE CLIENTS/PROJECTS

CORPORATE

Bank of America	Hammacher-Schlemmer & Co.	Sephora Store (Scribner's)
Capital One Bank	Home Savings Bank	Sony Building Tower
Cartier	Oheka Castle	Tiffany & Co.
Chase	Plaza Hotel	Versace
The Dakota Apartments	Ritz Tower	Waldorf Astoria Towers
Drake-Swiss Hotel	Rockefeller Center	Willamsburg Savings Bank
Fred F. French Building	The Seagram Building	

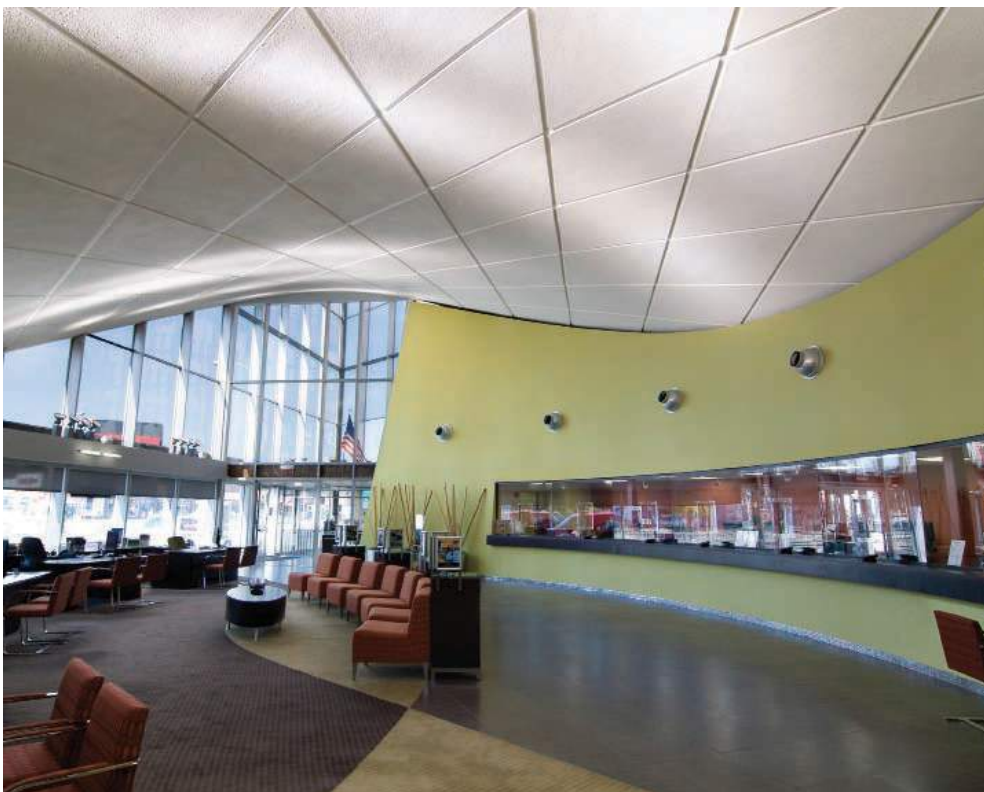
INSTITUTIONAL

Babylon Historical Society	Huntington Historical Society	Smithtown Historical Society
Caumsett Foundation; Caumsett State Historic Park	Liberty Hall	Town of Babylon
Century Association	Nassau County Department of Public Works	Town of Brookhaven
Coe Hall, Planting Fields Arboretum State Historic Park	North Star Academy	Town of Huntington
First Presbyterian Church (Smithtown, NY)	Onderdonk Landmark Society	Town of North Hempstead
	Salmagundi Club of NYC	Town of Smithtown

MONUMENTS

Barnard Greek Games (Barnard College, NY)	Nathaniel Conklin House Cornerstone (Babylon, NY)	Old Westbury Gardens exterior / interior figures and statues (Old Westbury, NY)
Father Duffy & George M. Cohan (Times Square, NY)	The Lions (The New York Public Library, NY)	Pulitzer Fountain (NY, NY)
Fitch Mausoleum, Woodlawn Cemetery (Bronx, NY)	Maine Monument (NY, NY)	Soldiers Monument, Green-Wood Cemetery (Brooklyn, NY)
George Washington (New York City Hall, NY)	Memorial Arch (Grand Army Plaza, NY)	
	Old Burying Ground (Huntington, NY)	

SURVEYING & CONSOLIDATION



SURVEYING & CONSOLIDATION

PARTIAL CLIENT LIST

Chase and Chemical Bank

Chase and Washington Mutual

Chemical Bank and Manufacturers Hanover

Citibank and European American Bank

ESL Federal Credit Union

Essette

European American Bank and
Franklin National Bank

GreenPoint Bank and
Home Savings of America

Home Savings of America and
Bowery Savings Bank

National Westminster Bank and
National Bank of North America

New York Community Bank and
Roslyn Savings Bank

North Fork Bank and GreenPoint Bank,
Subsequent Mergers

Roslyn Savings Bank and Roosevelt Savings Bank

TECHNOLOGY CENTERS

PARTIAL CLIENT LIST

CLIENT	PROJECT	KEY HIGHLIGHTS
Cablevision	Data Centers and Corporate Offices	25,000 sq. ft. Head End Facilities Transmission Rooms, Data Centers & Critical Systems
Client "X"	New Check Processing Facility and Data Center	250,000 sq. ft. with a 70,000 sq. ft. addition, 140,000 sq. ft. Tier 4 Data Center and 40,000 sq. ft. of Offices & Ancillary Support Spaces Renovation and New Construction Interior Services
EAB	Computer Room and two (2) Disaster Recovery Sites	Approximately 25,000, 15,000 and 10,000 sq. ft. respectively Renovations & Interior Services UPS Systems and emergency generators
JPMorgan Chase	New Processing Facility / Data Center Disaster Recovery Building Core and Offices	186,000 sq. ft. New Facility including data processing, disaster recovery, offices, meeting rooms and various building core spaces (e.g. cafeteria, security and access control, rest rooms) Sophisticated Technology Requirements Work Flow Analysis Interior Services
Nassau Financial Federal Credit Union	Computer Room and Corporate Headquarters	50,000 sq. ft. 5,000 sq. ft. Computer room Corporate Offices Interior Services
North Fork Bank	Disaster Recovery Center, Computer Room and Corporate Offices	150,000 sq. ft. 8,150 sq. ft. Disaster Recovery Center and 750 sq. ft. Computer Room integrated with other Disaster Recovery Sites. Corporate Offices & Interior Services
Roux Associates	Computer Room and Corporate Headquarters	150,000 sq. ft. 5,000 sq. ft. Computer Room Corporate Offices & Interior Services

CONTACT

GET IN TOUCH

LONG ISLAND

516.294.1666

PRINCETON

609.688.9100

EMAIL info@jrsarchitect.com

WEBSITE WWW.JRSARCHITECT.COM
