



WIRED

Issue 2 - JAN 29th

EURO CAR PARTS PRODUCT NEWS

Ready to fit rear axles

We are reintroducing **REFURBISHED** axles to add to our existing range of **NEW** axles. Stock is available now from Swadlincote!

The root of the Peugeot and Citroen axle problem are the bearing seals. Over time the seals allow water and dirt into the trailing arm section of the axle.

This corrosion accelerates wear of the bearings and also the axle shaft that the trailing arm rotates on. The corrosion soon spreads to the axle pin which is part of the central axle tube.

The problem causes instability in the axle as the trailing arm moves incorrectly or seizes altogether, causing unsafe handling and uneven tyre wear, ultimately resulting in an MOT failure.

TARGET CUSTOMERS:

M.O.T. CENTRES

Axles regularly fail M.O.T.'s so these complete axles offer a quick and reliable solution where the complete axle can be changed within a few hours at any garage.

PEUGEOT / CITROEN SPECIALISTS

Vehicle owners will often approach a specialist for this problem so speaking to this type of garage will not only ensure that you will be able to offer a product they may have trouble sourcing but the next day delivery service will ensure they make us their first port of call.

PEUGEOT / CITROEN DEALERS

Peugeot and Citroens price for the complete axle is £1200 so most dealers will look at sourcing the axles elsewhere as opposed to writing off the vehicle.

NOTE - If the customer requires an axle which is not in stock, we can order a refurbished axle direct from our supplier. These are built to order and can take up to 4-5 days before they are ready to be dispatched from our supplier.



SYMPTOMS

- excessive negative or positive camber of the rear wheels,
- uneven tyre wear,
- side to side movement in the wheels when the car is jacked up,
- creaking or knocking noises from the rear axle.

COMMON AFTERMARKET SOLUTIONS

There are currently 3 options available to repair a car with a broken or faulty rear axle, but these are all either expensive or provide only a temporary solution.

“ 2 YEAR WARRANTY!

Whilst most competitors provide only a standard 1 year warranty, we are so confident with the quality of our axles that we provide an extended 2 Year warranty.”



1. Genuine Axle from a Main Dealer – £1200 for parts only and unassembled. The parts must be assembled using specialised equipment and only a few workshops are equipped for this.

2. Second Hand Axle
– likely to be already worn with no guarantee.

3. Trailing Arm Repair Kit
– 8 hour labour to fit, but this is fitted over the old axle shaft. The axle shaft is 90% likely to be worn.

CURRENTLY STOCKED AXLES - NEW

VEHICLE	ADDITIONAL INFO	PART NUMBER
PEUGEOT 206 1998-2010	Disc Brakes	684 54 0040
	Drum Brakes (fits both ABS & Non-ABS)	684 54 0010
PEUGEOT 106 & CITROEN SAXO 1991-2004	Drum Brakes (fits both 3 & 4 Stud Wheels)	684 54 0240
PEUGEOT 306 & CITROEN XSARA 1994-2005	All brake types with ABS	684 54 0250
CITROEN BERLINGO & PEUGEOT PARTNER MK1 1996-2008	Van	684 54 0070
	MPV	684 54 0080

CURRENTLY STOCKED AXLES - REFURBISHED

VEHICLE	ADDITIONAL INFO	PART NUMBER
PEUGEOT 206 1998-2010	Disc Brakes	684 54 0290
	Drum Brakes, ABS	684 54 0280
	Drum Brakes, Non-ABS	684 54 0270
PEUGEOT 206 SW 2002	Hatchback, Disc Brakes	684 54 0061
	Hatchback, Drum Brakes	684 54 0051
CITROEN BERLINGO & PEUGEOT PARTNER MK1 1996-2008	Van	684 54 0300
	MPV	684 54 0310

Air Suspension & Coil Spring Conversion Kit

Air Suspension range is a continually growing aftermarket sector, and ECP is proud to be the first distributor on the market to launch a complete range of Arnott suspension products. With this new value proposition we are now in unbeatable position in suspension program.

Who is Arnott?

For nearly 25 years, Arnott has been the innovator in the air suspension replacement products. And until now, is the global industry leader in manufacturing quality aftermarket air suspension products and accessory. Arnott Inc. designs and manufactures affordable replacement air suspension

components and kits for luxury cars and SUVs including many Audi, Bentley, BMW, Hummer, Land Rover, Lexus, Mercedes-Benz, Jaguar, Porsche, SAAB, Ford/Lincoln/Mercury and GM models. Arnott's product line includes new and remanufactured air shocks, struts and air springs along with new compressors and coil spring conversion kits.

PRODUCT PORTFOLIO

Air suspension range

Wide range of a complete Air Suspension replacement for popular European vehicles including Citroen Picasso, Mercedes E-class, Porsche Cayenne, Audi Allroad, Range Rover, BMW.

Product available as:

OE Air Compressor

Air Suspension Spring

Complete Air Suspension Leg

Conversion set

Arnott manufacture a range of coil spring conversion kits for a range of popular European models, and vehicles where there are known issues with the standard air suspension setup, as a more affordable option. All kits come with all necessary hardware to get the job done first time. Every time. Including modules to turn off any suspension warning lights where applicable.

Product available as:

Complete set

Air spring to Standard still spring replacement



FULL RANGE – COIL SPRING CONVERSION KIT

Part No.	Description
975 44 8501	Coil Spring Conversion Kit (4 Shock/Springs) 01-06 Audi All Road
975 63 8501	Coil Spring Conversion Kit (4 Shock/Springs) 04-09 Xj8
975 67 8501	Coil Spring Conversion Kit - 06-12 Range Rover
975 67 8521	Coil Spring Conversion Kit - 95-02 Range Rover
975 22 8521	Rear Coil Spring Conversion Kit 03-09 Mercedes E-Class Wagon W/O Ads
975 22 8501	Coil Conversion Kit (4 Shock/Springs) 00-06 Mercedes S Class
975 22 8511	Coil Conversion Kit (4 Shock/Springs) 02-09 E-Class 05-11 Cls-Class
975 67 8531	Coil Spring Conversion Kit 03-05 Range Rover W/Ebm
975 44 8511	Coil Spring Conversion Kit (4 Shock/Springs) Audi Q7 Touareg Cayenn
975 67 8511	Rear Coil Spring Conversion - 98-04 Discovery II

Case Study

– Audi A6 Allroad 01-06

How much you save your customer if you offer our range as an alternative to main dealer? – Check below case study on very popular Audi model

Conversion Set

- 4 Shocks and springs (Pre-assembled)
- Top mounts
- Electronic Bypass Module
ECP no 975 44 8501



NET5 £1,031

Air Suspension

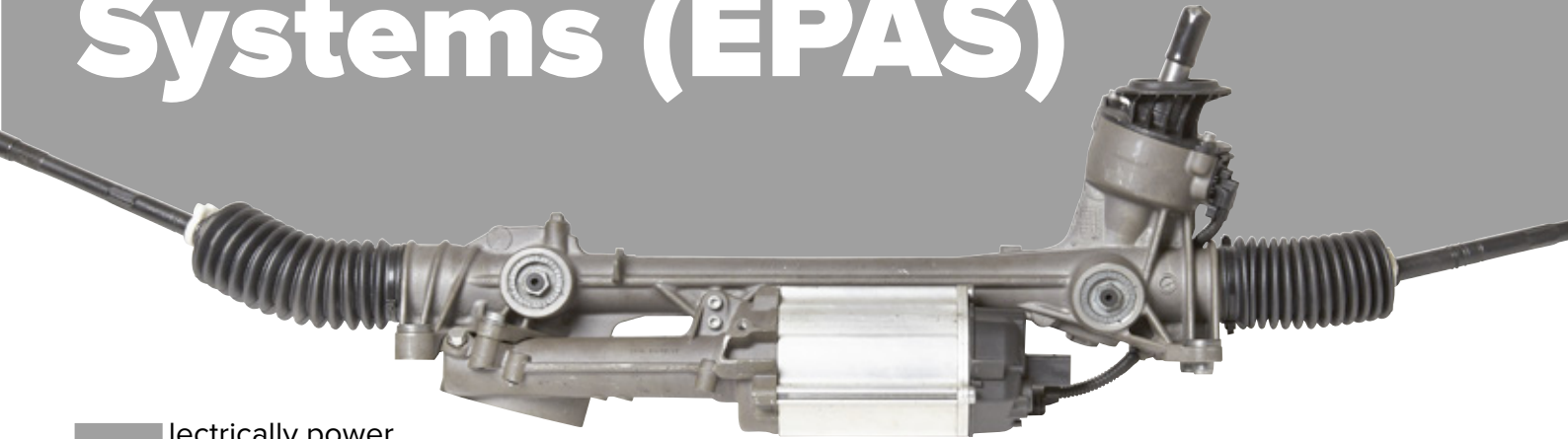
- 2x front air spring 626 44 0931
- 2x rear air springs 626 44 0941
- Suspension Compressor 626 44 0950



NET5 £931

Audi  – RRP £2,773

Electric Steering Systems (EPAS)



Electrically power assisted steering can be installed to a vehicle in 3 different formats:

- Steering Rack – with a Motor, Steering Sensor and ECU.
- Steering Column – with a Motor, Steering Sensor and ECU.
- Electro – Hydraulic Steering Pump – Electric Motor and Hydraulic Pump / Reservoir.

E-PAS benefits include:

- reduced fuel consumption: Vehicles with E-PAS steering systems are typically 8% more fuel efficient than an equivalent vehicle fitted with a hydraulic steering system. An E-PAS system doesn't require a steering pump that is belt driven by the engine, thus reducing added strain to the engine and reducing fuel consumption.

- reduction in harmful exhaust fumes. A reduction in CO² emissions can in some cases also provide a reduction in road tax costs.
- a significant reduction in vehicle assembly time. A typical E-PAS installation would be between 40 minutes to 2 hours. This is due to the elimination of hydraulic hoses, pumps, reservoirs and associated fluids.
- no contaminated fluids and a cleaner working environment.

CUSTOMER SUPPORT

Technical Note: **603 44 1551**

- ELECTRIC STEERING RACK MOTOR VAG GOLF MKV 10/2003 - (GEN 3 RACK)

After supplying and fitting the above steering rack, customers

are facing on going issues with the rack after fitment.

After correct diagnosis on a diagnostics machine it has been revealed that one of the main faults being developed is with the steering angle sensor. To overcome this problem, please ask the customer to check the below:

1. There are 3 steering angle sensors for this rack.
 - a) located in the steering rack internally next to the motor.
 - b) behind the steering wheel.
 - c) on the crash impact bar behind the front bumper.
2. After carrying out a diagnostic check for the fault, the diagnostic machine will not identify which angle sensor is at fault, the customer will have to find out which is at fault.

ST Coilovers

Engineered by KW suspension

German engineering, high-performance components and fantastic value for money – ST coilovers tick all the boxes when it comes to upgrading your car's handling.

In fact, Gymkhana legend Ken Block agrees so much so that he's teamed up with KW to launch their new range of suspension upgrades!

The range covers 3 flavours of coilovers catering for popular vehicle applications:

ST X

Fixed damping height adjustable

The STX is best compared to a KW variant 1. Fixed damping with great ride quality. Lowering most vehicles between 30-65mm front and rear (less on sports models with factory lowering). The springs come progressively wound to maintain comfort.



ST XA

Damping and height adjustable

The STX is best compared to a KW variant 2. Adjustable rebound damping to allow the consumer to tune the handling of their vehicle. Lowering most vehicles between 30-65mm front and rear (less on sports models with factory lowering).

ST XTA

Damping and height adjustable with adjustable Uniball top mount

Not only does the ST XTA offer the key benefits of the ST XA, it adds a further unique selling point of the adjustable top mounts. These can be used to adjust camber and caster on the vehicle. Perfect for the fast road and track user to tune the vehicles handling.



> COMPONENTS > PERFORMANCE & STYLING > SUSPENSION

> PARTS SEARCH

Grouped by: Range Brand

image	Part Number	Component	Fitting Position	Brand	Other Information
	97644016	Suspension Kit (Coilover)	Front & Rear	ST Suspensior	Axle Load Front from [kg]: 1106, Axle Load Front to [kg]: 1170, Chassis Lowering [mm]: 35-65 Axle Load Rear to [kg]: 990, Chassis Lowering [mm]: 35-65 ST X = Height only ST XA = Height & Damping
	97644020	Suspension Kit (Coilover)	Front & Rear	ST Suspensior	Axle Load Front to [kg]: 1035, Chassis Lowering [mm]: 35-65 Axle Load Rear to [kg]: 990, Chassis Lowering [mm]: 35-65; ST X = Height only ST XA = Height & Damping; ST XTA = Height/Damping & Uniball top mount

Customer	Part Number	Brand	RRP	Price	Branch	Regional	NDC	Swad	Part Description	Add To Basket
TRADE COUNTER	976440200		582.50	524.25	0	0	0	0	ST X (HEIGHT ONLY) TT	+
TRADE COUNTER	976440201		749.17	674.25	0	0	0	0	ST XA (DAMPING ADJU	+
TRADE COUNTER	976440202	ST	915.83	824.25	0	0	1	0	ST XTA (DAMP/CAMBE	+

> APP GUIDE

> BASKET

Catalogue

Most popular ST Coilover kits come in 3 categories and can be found on Topcat under:

Performance&Styling>Suspension>Coilovers>

Mid to Top.
When you expand the part

number it will list one of these:
ST X = Height only
ST XA = Height & Damping
ST XTA = Height/Damping & Uniball top mount.

TURBOCHARGER identification

Useful tips to help you secure that deal

The demand for turbochargers continues to grow as does our competitors need to increase their market share.

The garages will use the supplier that has the best availability, range and prices but equally the supplier who consistently supplies the correct part first time every time.

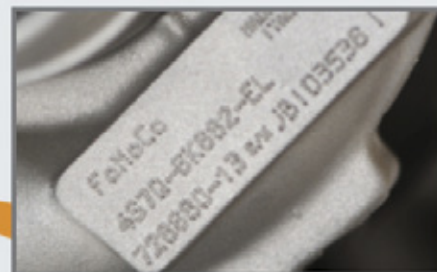
Take a few moments to read the following tips on turbo identification and establish yourself as the turbo specialist for your area.

There are 4 main manufacturers of Turbochargers for all passenger and light goods vehicles.

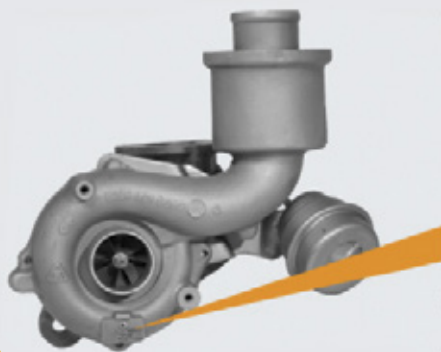
- Garrett (1)
- Borg Warner (2)
- Mitsubishi Turbocharger (3)
- IHI (4)



1



EG: 728680-13



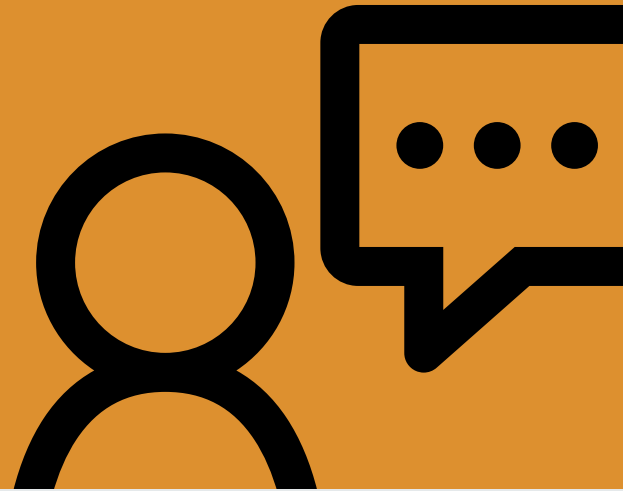
2



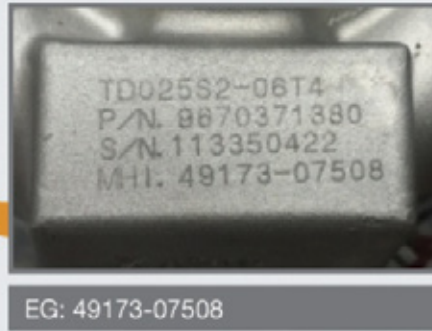
EG: KK-50146511

In most cases the Turbocharger can be identified by cross referencing the vehicle manufacturer OE number

but this is not possible in all instances. To ensure the turbocharger you are supplying is 100% correct, understanding



3



and style of number required to identify the turbocharger. Another tool to assist with identification is the FTS website: www.fts.it

Simply click on the catalogue tab and a search bar will appear you can enter an OE number and numbers from the old unit **WITHOUT SPACES** and it will advise the current manufacturer numbers which should cross into ECP systems to confirm ECP part number. Assistance can also be sourced from Webchat and the product manager if required.



4

the numbers and which ones are relevant will assist you in supplying correct part first time. The numbers and location of

the numbers varies by turbo manufacturer and vehicle marque. Below are examples of each manufacturer's location

By understanding the manufacturer and the relevant numbers they use to identify the turbocharger it may enhance your chances of securing the sale, using the tools and providing a little knowledge on the product goes a long way to install a confidence in your customer to purchase from you.

GLOVES

Our product management team have been very busy scouring the world to find new products that your customers want and need.

Please have a look at these new additions to our range and make sure that your customers know that we have them.

New to range:

Gloves for Hybrid Vehicle Mechanics

A Hybrid vehicle may produce five or more different circuit voltages, ranging from 12 to 650 volts in both AC and DC currents. Hence for working on the hybrid cars, customers will need a pair of rubber or synthetic rubber insulating gloves, rated to at least 1000 volts AC (Class 0), now we have these in our range.

BODYGUARD (CLASS 0)

Rubber Gloves sold as 1 pair

Size 8: S **543 77 3573**,
Size 9: M **543 77 3570**,
Size 10: L **543 77 3571**,
Size 11: XL **543 77 3572**.

HEAVY DUTY ORANGE NITRILE GLOVES

90 gloves per box

Size L: **543 77 3580**,
Size XL: **543 77 3581**,
Size M: **543 77 3582**,
Size S: **543 77 3583**.

These gloves feature a unique diamond grip pattern over the entire hand area which optimises surface performance and ensures an outstanding grip at all times. Made from a superior strength nitrile formulation, they provide exceptional resistance to tears and punctures yet are extremely





soft and flexible providing unparalleled comfort and sensitivity.

The cuff is beaded further adding to its strength and preventing liquid roll back.

Additionally they are Powder Free which minimises particulate contamination where product protection is of paramount importance.

These gloves are free of latex proteins which makes them ideal for sensitive skin.

Sales pitch

A 'box a month' for MOT testers and tyre fitters, gives them 45 pairs per box.

AGM

(Absorbent Glass Mat)



This is a fast growing segment of the aftermarket which we can satisfy with all of our three brands, but is important that you supply like for like!

TYPICAL APPLICATIONS:

- Stop / Start vehicles, and vehicles with high electrical specification.
- Regenerative Braking.

To help identify these batteries, all manufacturers print on the

front label “AGM” as shown above. Make sure you get your customer to check before supplying the battery!

So what’s so special about AGM batteries?

They are 100% sealed, so will not leak as no loose electrolyte is inside. They are designed to cope with the excess heat created by regenerative braking and continuous on/off actions

operated by the stop/start system, very importantly it also powers the electrics when the vehicle is in “off mode”, traffic lights and jams, etc.

Even a very heavy duty battery cannot come close to dealing with the power requirements that this technology demands...

In short if an AGM battery is not fitted to these vehicles, it will break down, so do not ever substitute another battery type.

New NTK Catalogue

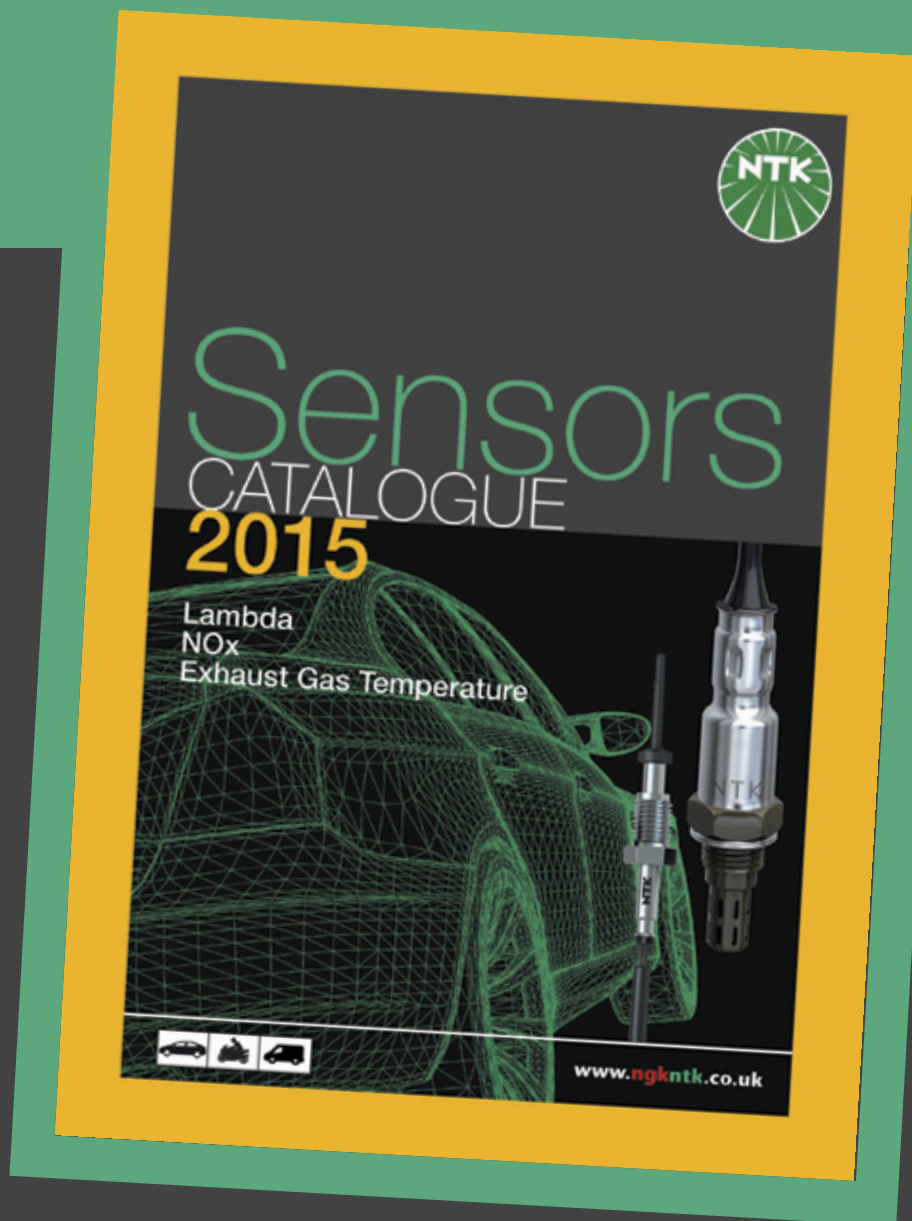
For those of you who may not be aware NTK is the ceramics division of NGK spark plugs who are the leading spark plug supplier in the UK and many other markets throughout the world.

NTK specialise in emission control sensors and are a highly respected brand in this sector. The sensor market continues to expand in the UK and is a very important sector for us. We now have the latest NTK catalogue in stock for you to order.

The part number is **997 71 0030**.

This catalogue lists all of the NGK NOx, Lambda and exhaust temperature sensors.

The catalogue is invaluable for tracking down those obscure items and for identifying the correct part where numerous options exist for the same vehicle.



ReGen

A new venture and a new opportunity

We are pleased to announce the launch of ReGen, an exciting new venture by Euro Car Parts. ReGen is a simple concept relating to lighting products only at the moment.

So what's it all about?

There are times when a headlamp, for example, can be damaged in transit – often it's nothing more than a fixing bracket that gets broken but just one slip, one careless moment, means the unit is unsaleable. This is an industry problem, main dealers have been selling headlamp repair kits for years but this is where ReGen comes in. We now have the technology and the resource to professionally refurbish lights with simple repairs that make them



perfectly functional once again.

We call these products ReGen – professionally refurbished in 'as new' condition but with prices at 30%-40% lower than our normal prices they're a fraction of the cost. And they all come with a fantastic peace





of mind 12 month guarantee. ReGen lights have an ECP 'ReGen' label on them, that is not peel-able, displaying the new part number; so they should not be confused with the original unit.

Stock

Of course, there isn't a massive stock of these parts

– if we haven't received a damaged one we haven't refurbished one. But we do have stock across 430 part numbers currently listed on TopCat and K8. The K8 short code is REGEN and you'll find the products listed alongside the new products on TopCat.

Part numbers are pretty simple too, for example if the new HELLA product part number is **471 59 1120** the Regen

part number will be **471 59 1120GF**, or if it's a TYC product the Regen part number will be **471 54 0061GF**. Note that the stock is located at Swadlincote warehouse, not the NDC.



BATTERY CODING equipment

Become a battery boffin!

So you have supplied the correct battery to your customer and he phones you and say he can't fit a battery because an error code appears? "An error code has appeared saying "battery needs to be coded into vehicle, but I can't see a code on the replacement battery".

So what do you do now? Well only main agents use and have these codes printed on their battery labels, for all aftermarket fitments the garage has to use a "Battery Coding Tool" and we carry this in the Exide brand.

447 44 0220

– EXIDE BRT-12 BATTERY CODE REPLACEMENT EQUIPMENT

This tool ensures that the garage can carry out the fitment and can quickly resolve any issues, the coding machine carries all the codes in its data base and clears error codes from the dashboard, there are also

regular updates available as manufacturers release them so it is entirely future proof.

This technology is increasing and 50% of all vehicles now coming off the production lines in Europe will require their batteries to be coded in, so if a garage does not have the tool, they will not be able to fit the battery and lose the sale... this is not just for AGM batteries but standard batteries as well.

So not only will this tool solve you customer's problem today it will continue to provide your customer with the cdes he needs for any other coded batteries he fits in the future.



PIERBURG

Pierburg are the market leaders in air and fuel management. There are statistically 3,2 Pierburg components in every passenger vehicle that is produced in Europe.

As a first-tier supplier, Pierburg has always been at the forefront as one of the leading partners to the automotive industry.

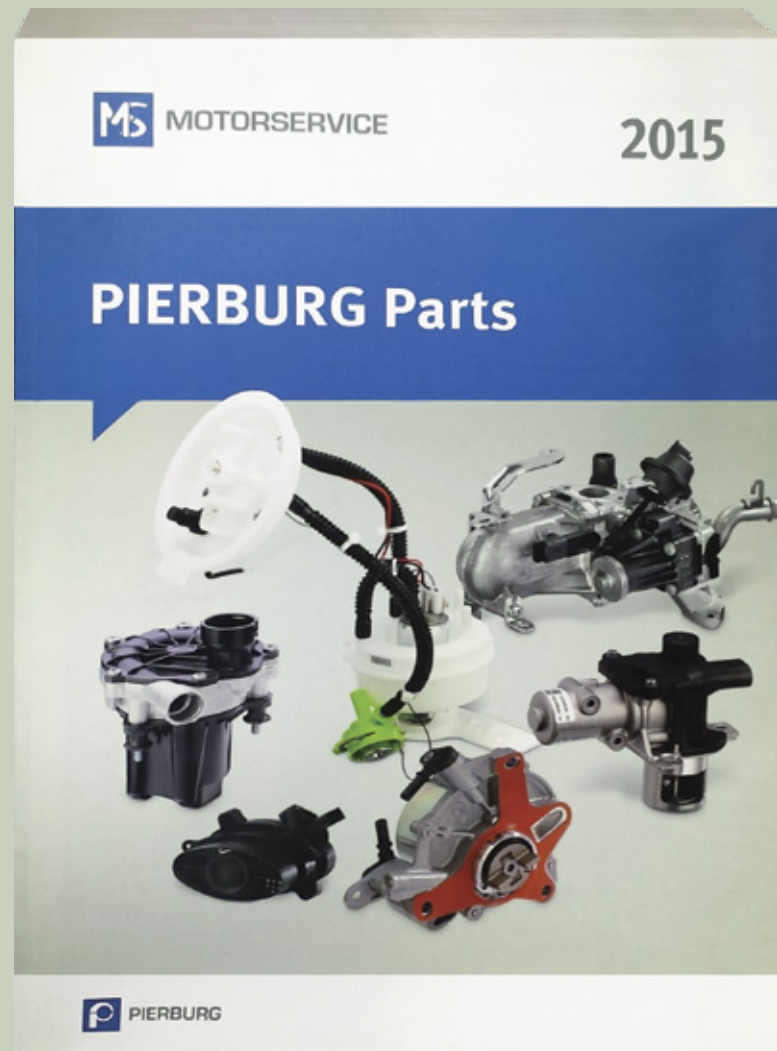
Pierburg was founded in 1909 and started out as a steel trader in Berlin. By 1928 Pierburg started producing carburetors and soon became the sole supplier to all German vehicle manufacturers and many other international motor and engine manufacturers.

Pierburg are constantly developing new ways of offering the vehicle manufacturer's ways of reducing fuel consumption, lowering emissions, enhancing performance without compromising on comfort and safety.

From the very start Pierburg have been shaping the future

of the automobile. The 2015 Pierburg catalogue is now in stock at the NDC for you to order.

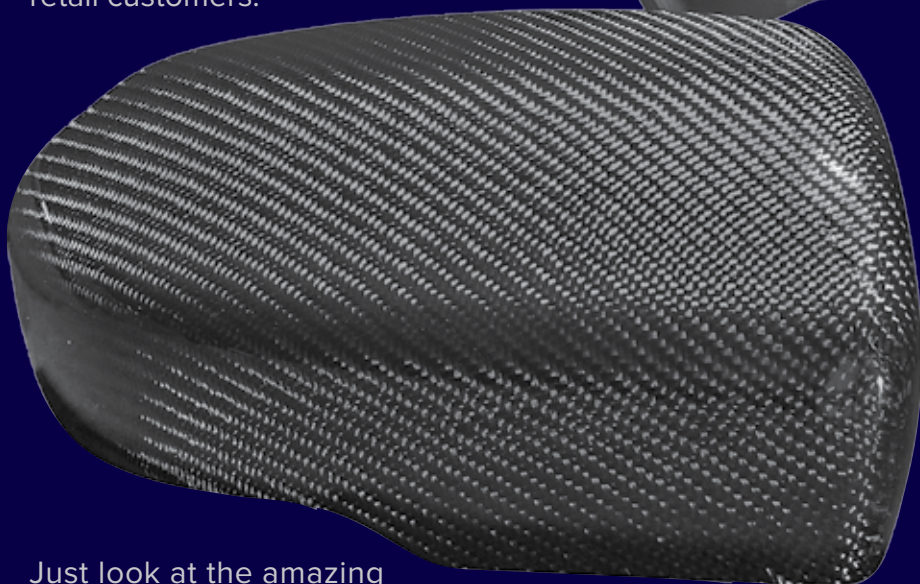
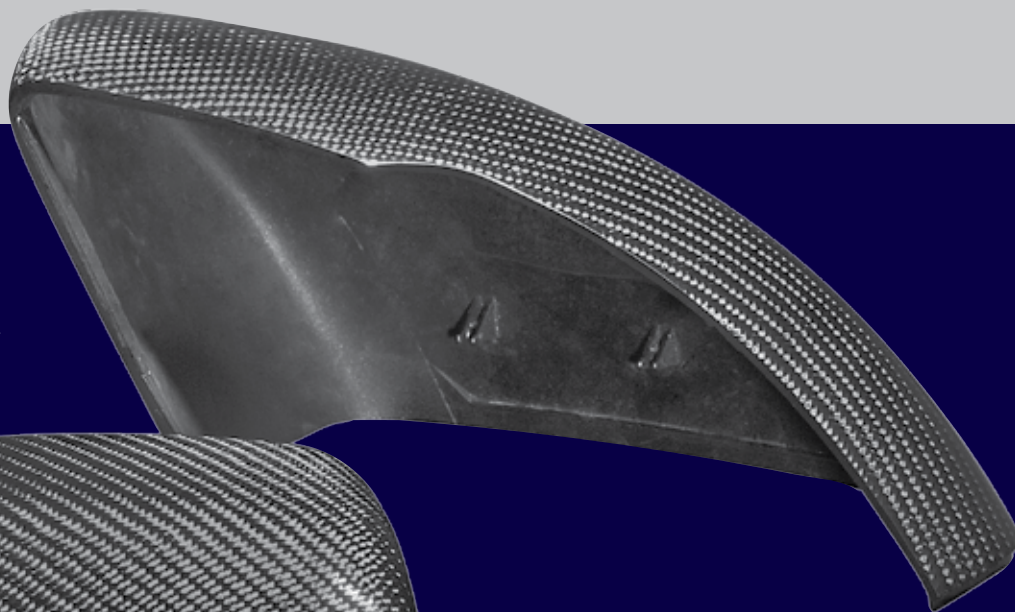
The part number is **997 77 9220**. Please only order 1 copy per branch.



GRD Carbon Mirrors

New range of performance and styling carbon mirrors

Here is a brand new range of quality carbon mirrors for your BMW, Land Rover and VW performance and styling/specialist trade customers and your performance and styling retail customers.



Exclusively supplied in the UK by Euro Car Parts.

GRD mirrors offer a great range of carbon mirrors for popular modern vehicles. They have unrivalled quality in finish and fit. All mirror cases are made from ABS plastic with a quality wet carbon overlay (often competitors mirrors use a fibreglass shell).

Just look at the amazing finish and quality. Targeted to the right customers these will fly off the shelf!

They are fully lacquered and polished to give that deep lustrous look! In stock and ready to go.



The range covers popular VAG/BMW/Range Rover models:

949 11 2021	GRD GLOSS CARBON WING MIRRORS (PAIR) BMW E82/E87/E90/E93
949 67 0011	GRD GLOSS CARBON MIRRORS (PAIR) DISCO/FREELANDER/RR SPORT/VOGUE 07>12
949 44 2011	GRD GLOSS CARBON WING MIRRORS (PAIR) GOLF MK6/TOURAN/EOS 09>
949 44 2031	GRD GLOSS CARBON WING MIRRORS (PAIR) AUDI A3 8V 13>
949 44 2041	GRD CARBON WING MIRRORS (PAIR) AUDI A1 10>
949 44 2051	GRD GLOSS CARBON MIRRORS (PAIR) GOLF MK5/TOURAN/JETTA/EOS/PASS 04>10
949 44 2061	GRD GLOSS CARBON WING MIRRORS (PAIR) A3/S3/A4 10> / A5 11>
949 44 2071	GRD GLOSS CARBON WING MIRRORS (PAIR) A3/S3/A4/A6/A8 08>11 / A5 07>09
949 11 2001	GRD GLOSS CARBON WING MIRRORS (PAIR) BMW 5 SER F10/X5 F15 7 SER F04
949 11 2011	GRD GLOSS CARBON WING MIRRORS (PAIR) BMW F20/F30/F45/F30/E84/F32/E83
949 67 0001	GRD GLOSS CARBON WING MIRRORS (PAIR) RANGE ROVER 13>/EVOQUE 12>
949 44 2001	GRD GLOSS CARBON WING MIRRORS (PAIR) VW GOLF MK7 13>
949 44 2021	GRD GLOSS CARBON WING MIRRORS (PAIR) SCIROCCO/PAS CC/TIGUAN/SHARAN 08>

WYNN'S range extension

191205101

Wynn's *Win with Wynn's*

**Speciality Chemicals & Equipment
for Automotive & Fleet**

Wynn's is a global leader specialising in the additive technology. Wynn's Professional Range of products offers the workshop the highest quality additives and consumables that restore optimal operation in vehicle systems. All Wynn's products are **efficient, affordable, easy to use** and profitable.



£6.99
555 77 0770

**Cooling System Extreme
Degreaser 325ml**

To cure Oil contamination in the cooling system restoring heat transfer



£4.99
555 77 0190

**Cooling System
Stop Leak 325ml**

Stop and prevent small leaks in the cooling and heating system.

0845 603 3636
Over 180 Branches Nationwide

OUTMO CAR PARTS

Offer valid until 28th February 2015 whilst stocks last. Prices correct at time of going to press: January 2015. Prices exclude VAT. VAT will be applied at current rate. Errors & omissions excluded.

Wynn's

Diesel Engines



£8.99
555 77 0090

**Diesel Clean 3
500ml**

Provides a strong one tank clean-up of the diesel fuel system



£5.99
555 77 0160

**Diesel EGR 3
Aerosol 200ml**

Developed for cleaning the air intake system of all diesel engines



£2.99
555 77 0450

**Injector Cleaner
Diesel 325 ml**

Cleans injectors and restores spray pattern



£6.59
555 77 0130

**Turbo Diesel
Cleaner 200ml**

Developed for cleaning the air intake system of all diesel engines

Gear Box



£5.59
555 77 0600

**HPLS Gear Oil
Treatment with
Stop Leak 125ml**

HPLS is a treatment for manual gearboxes



£4.99
555 77 0820

**Automatic
Transmission
Treatment 325ml**

Developed to clean the automatic transmission system restoring the efficiency

Petrol Engines



£8.99
555 77 0180

**Petrol Clean 3
Extreme 500ml**

A strong one tank clean-up of the petrol fuel system



£5.99
555 77 0160

**Petrol EGR 3
Aerosol 200ml**

An aerosol product developed for cleaning the air intake system of all petrol engines

0845 603 3636
Over 180 Branches Nationwide

OUTMO CAR PARTS

Offer valid until 28th February 2015 whilst stocks last. Prices correct at time of going to press: January 2015. Prices exclude VAT. VAT will be applied at current rate. Errors & omissions excluded.

Wynn's is a global leader in additive technology, we have now secured an agreement with this supplier for additions to the range. Just some of the products are featured in a great new flyer that is heading into branches early next week.

Wynn's is a distinct professional and retail range. Another great opportunity to get a foot in the door with those low or nil spending customers. WIRED will keep you up to date with new to range items as they come on board.

MANN FUEL FILTER

Installation advice for customers



PRODUCT NEWS

**MANN
FILTER**

Correct installation procedure VAG fuel filter elements (PU)

The fuel filter housing installed on certain VAG vehicles features a 5 x screw cap fixing, for which specific installation recommendations have been published. Fuel leakage from this style of filter housing, subsequent to filter element / O-ring replacement, can result from the incorrect tightening sequence of the fixing screws causing ineffective sealing.

Installing the filter element (PU 825 x) as per the guide below will avoid potential fuel leakage.

1. Remove all screws and the housing cover.
2. Remove the filter element from housing. Remove the gasket.
3. Remove all diesel / dust / water residue from the housing by using a diesel suction tool.
4. Install the new filter element. Wet the new gasket with diesel fuel and mount it onto the cover.
5. Offer the cover squarely to the housing and push down evenly until sealed centrally.
6. Fix all screws to the cover and screw them down by hand. Then tighten in the sequence shown below to a torque of 5Nm.



VAG fuel filter housing with 5 screw cap



Filter element

- ❑ External fuel leakage and engine component damage could result if the correct installation procedure is not followed.
- ❑ The filter element is mounted inside the filter housing and therefore cannot be responsible for external fuel leakage.
- ❑ MANN+HUMMEL will accept no liability for any consequential cost due to incorrect installation.



Correct screw tightening sequence

Mann Filters have issued an information sheet regarding fitting of this filter to eliminate possible leakage issues. The document is highlighted in RED on TopCat and must be printed and sent to the customer with the invoice. Remember "prevention is better than cure". Part number 503 44 092

Contact details



To find the Product Manager associated with the features in this week's WIRED please use ECPedia.

The Product Managers Directory on ECPedia is extremely helpful and will give you all the email and phone numbers of the Teams who deal with individual product groups. It's quick and easy to use.