

OUTSIDE PLANT & UTILITY PRODUCTS FOR TELEPHONE, ELECTRICAL & CATV INDUSTRIES

Providing conduit & accessories since 1982

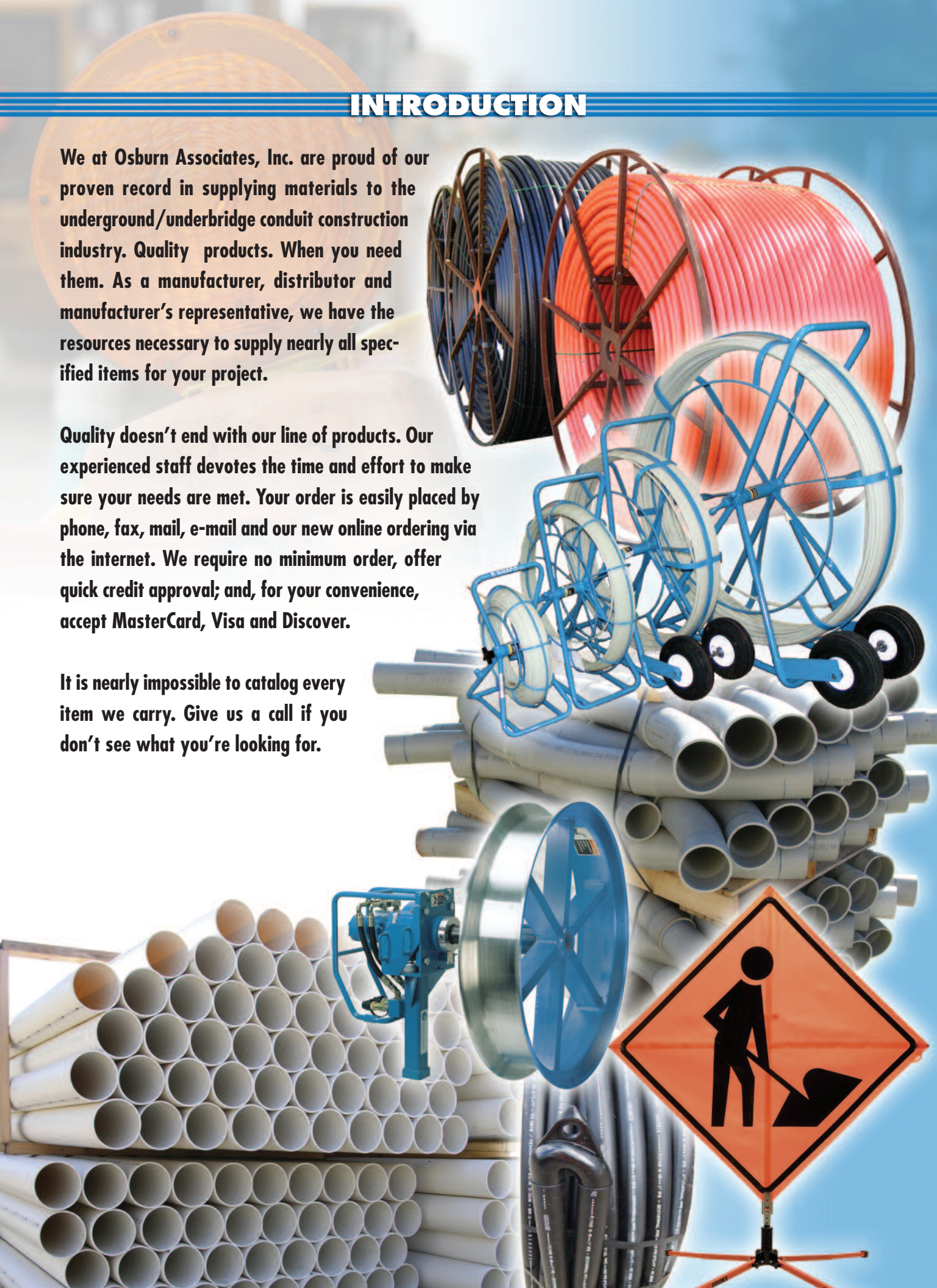


INTRODUCTION

We at Osburn Associates, Inc. are proud of our proven record in supplying materials to the underground/underbridge conduit construction industry. Quality products. When you need them. As a manufacturer, distributor and manufacturer's representative, we have the resources necessary to supply nearly all specified items for your project.

Quality doesn't end with our line of products. Our experienced staff devotes the time and effort to make sure your needs are met. Your order is easily placed by phone, fax, mail, e-mail and our new online ordering via the internet. We require no minimum order, offer quick credit approval; and, for your convenience, accept MasterCard, Visa and Discover.

It is nearly impossible to catalog every item we carry. Give us a call if you don't see what you're looking for.



HANDHOLE AND MANHOLE

HAND HOLES

Common Sizes

17" x 30"
 24" x 36"
 30" x 48"
 36" x 60"
 48" x 48"

Osburn's carry a full line of hand holes and accessories. Light, medium and heavy duty boxes and lids as well as hardware. The sizes listed are common but others available upon request.



MANHOLE LIFTING HOOK

Part#	Length
3668	26.5"
3669	18"



MANHOLE LADDER (hook over)

Part#	Length
3643	7'
3644	8'
3645	9'
3646	10'
3647	11'
3648	12'



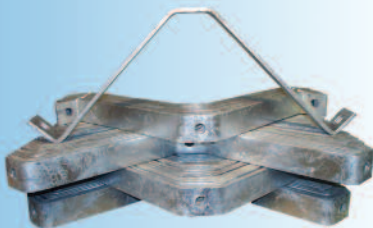
MANHOLE STEPS

Part#	Steel Size
3640	Drop front type non-slip
3641	Bolt on step for supporting ladder



CORNER RACK SUPPORT

Part#	Steel Size
3635	12" x 12" legs
3636	9" x 12" legs
3637	18" x 18" legs



UNDERGROUND CABLE RACKS

Part#	Support Hole	Length	Bolt Hole Spacing
3620	8	15"	13.5"
3621	14	24"	22.5"
3622	18	30"	28.5"
3623	37	55.25"	
3624	43	64.25"	
3625	47	70.25"	
3626	54	81"	



UNDERGROUND CABLE RACK HOOKS

Part#	Extension from Rack Face
3627	4"
3628	7.5"
3629	10"
3630	14"
3631	18"



CABLE RACK SUPPORTS

Part#	Extension from Wall
3632	3.5"
3633	6.5"
3634	6.5"



HDPE CONDUIT, PIPE & ACCESSORIES

HDPE - High Density Polyethylene
SDR 11, 13.5, 17 and 21 (smooth wall)
SIDR 7, 9, 11.5 and 15 (smooth wall)

Large Diameter HDPE
Plenum
Geo-thermal

HDPE is available on reels, coils and straight lengths. Call our sales associates for additional information.

DUCT PROJECTILES

Size Range
 1" - 6"



LINE MISSILE

Size Range
 1" - 6"



INFLATABLE MISSILE

Size Range
 1" - 6"



IT TOOL BLOWER SEAL-OFF

Part# Size Range
 F02145 1" - 4"
 F02146 1" - 6"



WATERTIGHT EXPANDABLE PLUG

Part# Size Range
 3052 4"



UNIVERSAL PLASTIC PLUG

Size Range
 1" - 6"



PULLING SWIVELS

5/8" - 3" Break-away/Non



TIE STRAP PLIERS

Part#
 3515



TIE STRAP

Part# Size Range
 3505 3.5" - 4"

TRIPLEX PLUGS

Part# Size Range
 40B122S 1.07" to 1.22"
 40B136S 1.22" to 1.36"
 40B142S 1.30" to 1.42"
 40B167S 1.53" to 1.67"



POLYWATER F LUBRICANT

Part# Container Size
 F06001S 1 Gal Summer
 F06001W 1 Gal Winter
 F06003S 5 Gal Summer
 F06003W 5 Gal Winter



PULLING TAPE

Part# Description
 PE1250 1250# x 3000" Poly Tape
 PE1800 1800# x 3000" Poly Tape
 PE2500 2500# x 3000" Poly Tape



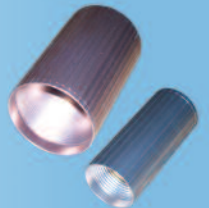
PULLING ROPE

Part# Description
 F03017 1/4" x 5000' Poly Rope
 F03023 3/8" x 4000' Poly Rope
 F03025 1/2" x 2400' Poly Rope



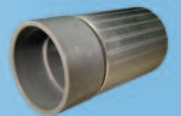
ALUMINUM COUPLING

Part# Size Range
 F09006 1.18" to 1.42"
 F09010 1.48" to 1.70"
 F09013 1.80" to 2.0"
 F09019 2.31" to 2.5"



POLY TO PVC ADAPTER

Size Range
 1" - 4"



PULLING EYES (FIXED/ADJUSTABLE)

Size Range
 1" - 8"



TELEPHONE CONDUIT & ACCESSORIES

TYPE C CONDUIT

Part#	Duct Size
PTC75C	4"



BORE-GUARD™

Part#	Duct Size
BG340SP-020	3" - 20 ft
BG440SP-020	4" - 20 ft
BG540SP-020	5" - 20 ft
BG640SP-020	6" - 20 ft

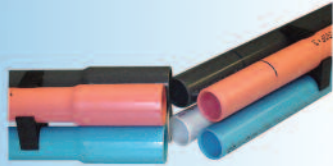
We stock Bore-Guard in 20 ft lengths but 10 ft is available. Fittings available.



TETRA DUCT™

Part#	Duct Size
TD125	4 way 1 1/4"
TD150	4 way 1 1/2"

Call office for special requests.



PIPE STRAPS

Type	Size
Flanged	4"
Flat	1" - 8"



CONDUIT SPACERS

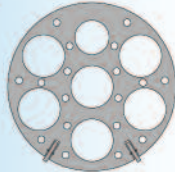
Size	Description
2" - 6"	Intermediate
2" - 6"	Base

1" through 3" separation available



BORE SPACERS

Contact our sales office for information and pricing on your next project.



END BELL ADAPTORS

Size	Description
1.25" - 8"	Cable sheath protection

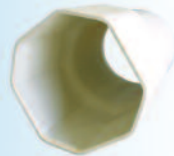
Fabricated and molded available



8 SIDED ADAPTORS

Size	Description
6" x 4"	8 Sided x Tel Round

Other round sizes available



TYPE C CONDUIT BENDS

Part#	Degree	Radius
1354	90	36
1328	45	36
1306	22.5	36
1298	11.25	36
1348	90	24
1325	45	24
1304	22.5	24
1296	11.25	24



ENLARGING-REDUCING ADAPTORS

Part#	Description
1071	4" C to 4" SCH 40
1071/8	4" C to 4" SCH 40 Poly Long Bell
1074/N	4" C to 4" Split Duct
1075	2" IPS to 4" C
1077	3" IPS to 4" C
1078SP	4" C to 4.77 Poly Long Bell



SQUARE BORE ADAPTORS

Part#	Description
1125	3.25" Sq to 3.5" RND
1130	3.25" Sq to 4" RND
1132	3.50" Sq to 4" RND



WYE BRANCH

Part#	Description
3026	4" Solid C
3027	4" Split C
3010	2" Solid SCH 40 FAB
3014	4" Solid SCH 40 FAB
3026/18	4" Solid C FAB
3027/18	4" Split C FAB

Molded/Fabricated



SLEEVE COUPLING

Part#	Description
1008	4" Sleeve Coupling



STOP COUPLING

Part#	Description
1006	4" Stop Coupling



SPLIT/REPAIR CONDUIT & FITTINGS

TONGUE & GROOVE SPLIT CONDUIT

Part# Description

TG10048 4" Type C
 TG7107 4" SCH 40
 2" through 6" available.



SPLIT STEEL CONDUIT

Part# Description

7190SH 2"
 7192SH 4"
 2" through 6" Available, Galvanized
 & Black Iron, Hinged or Flanged



SNAP-LOC SPLIT CONDUIT

Part# Description

10045 3.5"
 10048 4"
 2" through 6" available

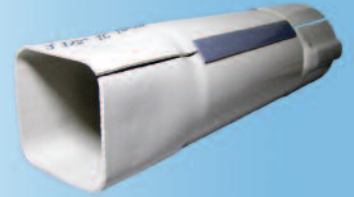


SQUARE BORE ADAPTORS

Part# Description

1135 3.25" Sq to 3.5" RND
 1136 3.25" Sq to 4" RND
 1140 3.5" Sq to 4" RND

Other sizes available



SPLIT COUPLINGS

Part# Description

1008S 4" Split Sleeve Coupling
 1006S 4" Split Stop Coupling



SPLIT CONDUIT BENDS

Part# Degree Radius

1354S	90	36
1328S	45	36
1306S	22.5	36
1396S	11.25	36

Type C is listed but 2"-6" available in other conduit types. We have the equipment to split most any type of conduit and fittings in PVC, Steel and Fiberglass.



ELECTRICAL CONDUIT & FITTINGS

SCH 40 UL CONDUIT

1" - 6" 10' & 20' lengths

NEMA TC 6 CONDUIT

2" - 6" 20' lengths

NEMA TC 8 CONDUIT

2" - 6" 20' lengths

Bell & Spigot



MALE THREADED ADAPTOR

1" - 6" IPS



METAL LOCK NUT

1" - 6" NPT



FEMALE THREADED ADAPTOR

1" - 6" IPS



METER BOX SLIDER (60" LONG)

2.5" & 3" male thread X 3" IPS sleeve



SCH 40 & TC 6-8 BENDS

Degree Radius

90	36
45	36
22.5	36
11.25	36

Other degree and radii available upon request.



END BELL ADAPTOR

1" - 6" IPS



STOP COUPLING

1" - 6" IPS



DUCT RISER CAP

2" - 4", 3" - 4", 4" - 4" IPS



PVC CAP

1" - 6" IPS



UNDERBRIDGE/CUSTOM STEEL FABRICATION

Osborn Associates, Inc. is a manufacturer and distributor of materials and tools for the communication, CATV and electrical industries. With over 25 years as a leader in Underbridge/Underground applications, our staff will assist you and your engineers to help determine design and product choice. While we are not an engineering firm, we are here to help. We have the equipment and facilities to supply nearly all specified items for your projects.

CONDUIT FOR BRIDGES

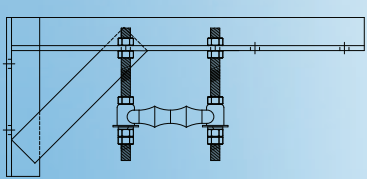
Material	Type	Description
Fiberglass	ID/IPS/Bullet Resistant	2" - 6"
Steel	Galvanized/Black Iron T&C	2" - 6"
PVC	Type D	4"

Fittings for conduit include but not limited to, Bends, Couplings, Expansion Joints, Split Stop Rings, Epoxy, Threaded Adapters.

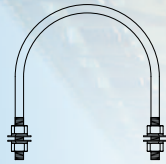
CONCRETE INSERTS

Type	Description
Mechanical	.5" - .75"
Encased Loop Ferrule	.5" - .75"

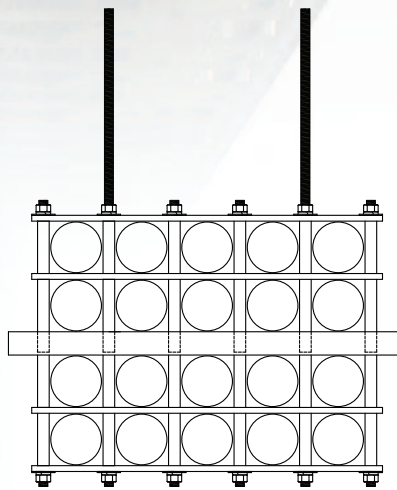
Anchors are available in various finishes; Electro Galvanized, Hot Dip Galvanized, 304 SS and 316 SS. Call our sales associates to ensure the anchor you are looking for is available in the finish you need.



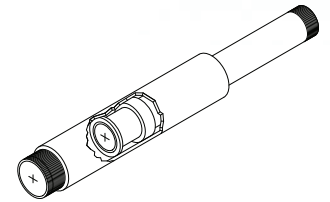
RIGHT ANGLE BRACKET WITH ROLLER



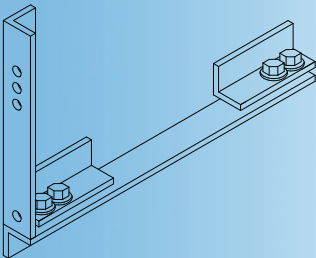
U-BOLTS



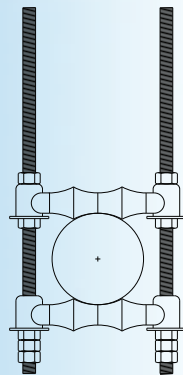
INTERMEDIATE HANGING GRID HANGER



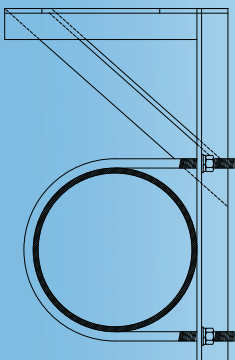
STEEL EXPANSION JOINT EXPLODED VIEW



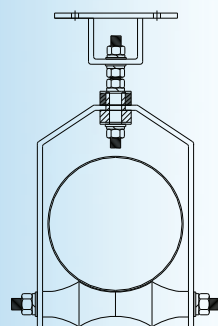
SIDE MOUNT I-BEAM BRACKET



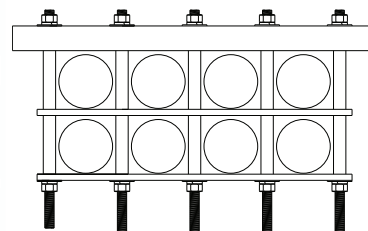
2 ROD ROLLER ASSEMBLY



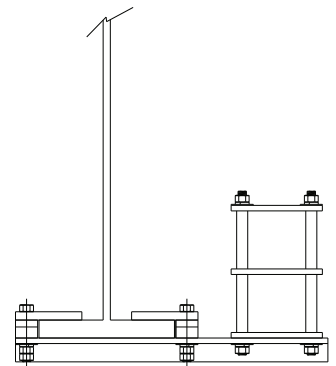
TOP OR SIDE MOUNT BRACKET WITH U-BOLT



YOKE ROLLER BRACKET



BASE MOUNT GRID HANGER



SIDE MOUNT BRACKET WITH GRID HANGER

The hangers listed are common for the various utilities. It is nearly impossible to catalog all the different styles of hangers. Call us with your design requirement and we will help you.

WORK ZONE/SAFETY

ROLL UP SIGNS & STANDS



TRAFFIC CONES

Standard or Trimline Reflective Collar or No Collar
Height 6" thru 36" Weight 1/4# thru 12#



PLASTIC DRUMS & BASES



BARRICADES TYPE I, II & III



POLY-DOME™ MARKERS



LINE MARKERS



REFLECTIVE SHIRTS & SAFETY VESTS



WARNING TAPE



Osburn is a full line manufacturer of other products used in Underground Utility Construction from Outside Plant products for the Telecommunications, Electrical, CATV, Windfarm Applications, to pipe and products for GeoThermal, Water and Sewer applications. We have all the necessary facilities and equipment to get your project completed in a timely manner.

Osburn Associates, Inc.



A Manufacturing Company

Logan, OH - St. Petersburg, FL

PH: 1-800-523-8917 FAX: 1-740-385-8016

www.osburns.com