



ANNUAL REPORT

2015

2016

A MESSAGE
FROM THE
ASSISTANT
COUNTY
EXECUTIVE
OFFICER
EDA



It has been a privilege serving as Assistant County Executive Officer for the Economic Development Agency (EDA) since April of 2009. We proudly serve as one of Riverside County's largest agencies, with more than 735 employees and an annual budget of just over \$496 million. There has been phenomenal growth over the last seven years.

This fiscal year, the Riverside County Business Center was opened in downtown Riverside. It is unique because it provides interested business partners with property selection options, business financing information, access to workforce development assistance, international trade tools, incentive zones facts, fast track processing for permits and an ultimate guide to several local strategic partners all under one roof. A program to highlight is our Fast Track program designed to efficiently assist businesses engaged in the County's land use and permitting processes. In FY 2015/2016, the Economic Development Agency launched 10 new industrial and commercial Fast Track projects delivering 1,264 full-time permanent jobs, \$17.98 million in capital investments and \$149 million in taxable sales.

Please look through the 2015/2016 annual report to share in additional accomplishments. This report highlights all the hard work and effort that the EDA team continues to put forth to enhance the economic position of the County and its residents.

Robert Field
Assistant County Executive Officer|EDA



TABLE
OF
CONTENTS

3	EDA HISTORY & OVERVIEW	15	PROJECT MANAGEMENT	29	R.C. LIBRARY SYSTEM
4	BOARD OF SUPERVISORS	17	REAL ESTATE	31	EDWARD-DEAN MUSEUM & GARDENS
5	EDA HIGHLIGHTS	19	WORKFORCE DEVELOPMENT	32	ADMINISTRATIVE SERVICES
7	ECONOMIC DEVELOPMENT	21	HOUSING AUTHORITY	33	R.C. FAIR & NATIONAL DATE FESTIVAL
9	BUSINESS INTELLIGENCE	23	HOUSING	35	R.C. FILM COMMISSION
10	FACILITIES MANAGEMENT	25	AVIATION	37	LOCATIONS
11	OFFICE OF FOREIGN TRADE	26	ENERGY MANAGEMENT		
13	MARKETING	27	COMMUNITY SERVICES DIVISION		



RIVERSIDE COUNTY ECONOMIC DEVELOPMENT AGENCY

HISTORY & OVERVIEW

From its inception, the Riverside County Economic Development Agency (EDA) has been merging, transforming and adapting to changes in the County government landscape. EDA was created under Board action on November 7, 1989, which consolidated the Economic Community Development Department (ECD), and the Redevelopment Agency (RDA) and County Airports. In 1997, the Private Industry Council/Job Training department was added to EDA. This was the first in a series of “troubled” departments that EDA turned around, correcting financial and administrative problems and creating soundly managed programs.

In 1996, the Riverside County Fair & National Date Festival came under EDA and 1997 brought in the County Airports. Both the Fair and the Airports were financially challenged with deteriorating facilities and under EDA’s direction, they have become self-supporting with greatly improved facilities. In 1999 and 2000, the Edward-Dean Museum & Gardens and the Riverside County Housing Authority joined EDA. County Service Areas or Community Services Division came on board in 2002. In 2009, EDA merged with Riverside County Facilities Management to become one of the most robust and reputable departments in the County. Robert Field was appointed to the position of Assistant County Executive Officer/EDA for the Agency.

EDA has had a history of change, but also of growth and welcomed additions. In 1989, EDA started with a staff of less than 20 employees. EDA now manages over 730 staff. EDA’s budget has grown from hundreds of thousands to hundreds of millions. EDA continually strives to create communities where all residents have access to quality housing in neighborhoods that are attractive, functional and safe.

The mantra of Riverside County’s very first Board of Supervisors in 1893 was “the business of the county is business, not politics.” The work and dedication of EDA staff reflects this noble declaration.





RIVERSIDE COUNTY BOARD OF SUPERVISORS

The Board of Supervisors is the governing body of the County of Riverside. The Board enacts ordinances and resolutions, adopts the Annual Budget, approves contracts, appropriates funds, sets policy, determines land use zoning for the unincorporated areas, and appoints County Officers and members of various boards.



KEVIN JEFFRIES
DISTRICT 1 SUPERVISOR



JOHN TAVAGLIONE
DISTRICT 2 SUPERVISOR



CHUCK WASHINGTON
DISTRICT 3 SUPERVISOR



JOHN J. BENOIT
DISTRICT 4 SUPERVISOR



MARION ASHLEY
DISTRICT 5 SUPERVISOR



**1,290 CONSTRUCTION JOBS AND APPROXIMATELY
1,600 LONG TERM JOBS.**

RIVERSIDE COUNTY ECONOMIC DEVELOPMENT AGENCY

YEAR IN REVIEW

- ▶ Earned gross admissions revenue of over \$1.1 million net carnival revenue of \$877,362 and gross concession sales of over \$2.1 million dollars, up 5% over the previous Fair. Sponsorship team boosted cash sponsorships by over 20% over last year. (Fair)
- ▶ Over 30 active projects in process with more than 3,000 jobs and \$600 million in capital investment. (Economic Development)
- ▶ Completed the acquisition of real estate valued at over \$21.2 million. Managed a lease portfolio of approximately 460 leases totaling over 4.8 million square feet of leased space. (Real Estate)
- ▶ Working with DPSS (Department of Public Social Services) to deliver over 300,000 square feet of new space for the Department which represents over \$130 million in private investment and the creation of 1,290 construction jobs and approximately 1,600 long term jobs. (Real Estate)

- ▶ The \$54 million OpTerra Solar project was launched. Five sites have been completed and have generated over 1.6 million kilowatt hours in less than seven months. (Energy)
- ▶ The Office of Foreign Trade (OFT) welcomed 29 delegations with a total of 544 delegates from the Republic of China, Germany, India and Turkey. (OFT)
- ▶ The Office of Foreign Trade is tracking 40 EB – 5 projects in “Targeted Employment Areas” that when completed will represent over \$9 million in invested dollars and produce over 12,000 jobs countywide. One of the newer EB – 5 projects starting this year will be a \$30 million, 5 story extended stay hotel in the City of Riverside. (OFT)
- ▶ \$1.5 million in home funds and approximately \$1.4 million in former Redevelopment Agency for the County of Riverside housing funds were invested for the development of 112 affordable rental housing units for low-income families. (Housing)

**\$1.5 MILLION IN HOME FUNDS AND APPROXIMATELY \$1.4 MILLION IN FORMER REDEVELOPMENT
AGENCY INVESTED FOR 112 AFFORDABLE RENTAL HOUSING UNITS FOR LOW-INCOME FAMILIES.**



\$54 MILLION OPTERRA SOLAR PROJECT HAS GENERATED OVER 1.6 MILLION KILOWATT HOURS IN LESS THAN SEVEN MONTHS.

- ▶ 6,786 low-income individuals were provided shelter, rapid re-housing, homeless prevention, and outreach services through Emergency Solutions Grant (ESG) and Community Development Block Grant programs (CDBG). (Community Services)
- ▶ 115,758 low-income people participated in a variety of CDBG funded educational, recreational, and community programs and activities. (Community Services)
- ▶ 355,323 individuals and businesses benefitted from services funded through the CDBG and ESG programs. (Community Services)
- ▶ Interfaced 19,609 vendor invoices into the PeopleSoft Financial System, saving hundreds of hours and thousands of dollars in staff time by eliminating manual entry. (Administrative Services-Finance)
- ▶ Completion of \$160,000 facility projects at Riverside County Fairgrounds. (Facilities Management)
- ▶ CDBG's Clean Neighborhoods Program assisted 89 residential properties including 119 containers and 368 tons of waste and rubbish. (Community Services)
- ▶ EDA and its subrecipients expended approximately \$7.2 million in HUD Community Planning and Development (CPD) Funding benefiting low and very low-income persons in Riverside County. (Community Services)
- ▶ In October 2015, the EDA Energy Division was presented with The Cool Planet Award for 1st Place in the Large Government/Institutional Sector. The Cool Planet Award recognizes the valuable contribution of Southern California Edison business customers who demonstrate exemplary leadership in energy and carbon management within their business size and industry. (Energy)
- ▶ Facilitated more than 40 special events. Including the 6th Annual Riverside State of the County with over 565 attendees, the tourism focused 3rd District Summit with over 300 attendees, and the annual 5th District Symposium with nearly 300 attendees. (Marketing)



355,323 INDIVIDUALS AND BUSINESSES BENEFITTED FROM SERVICES FUNDED THROUGH THE CDBG AND ESG PROGRAMS.



ECONOMIC DEVELOPMENT

Economic Development for Riverside County is a collaborative partnership between the County's Economic Development Agency (EDA), its 28 cities and several regional Economic Development Corporations for the purposes of implementing business attraction and retention programs. The partnership is called Team Riverside County (TRC). Collaboration and leveraging financial and human resources are the cornerstone principles guiding the program. TRC's main objectives are to promote Riverside County's business opportunities to national and international markets, develop effective networks within industry sectors and lead generation.

Successful project highlights for 2015/2016 include:

- ▶ Over 30 active projects in process with more than 3,300 jobs and \$600 million in capital investment
- ▶ Selection of Riverside for the California Air Resources Board Southern California Laboratory and Testing Facility Consolidation Project
- ▶ Team Riverside County won two Awards of Merit for the newly-opened Riverside County Business Center and East Valley Coalition economic development partnership
- ▶ Ascena Retail Group, a large scale clothing retailer which is relocating their distribution center to Riverside, bringing with them 300 jobs
- ▶ Project Falcon, a shoe logistics company, selected Beaumont as the location for their new facility bringing 304 jobs and \$30 million in capital investment
- ▶ Genesis Supreme RV purchased a manufacturing facility in Mead Valley which will result in 160 jobs at the facility
- ▶ Facilitated \$2 million in Recycling Market Development Zone financing for the expansion of CarbonLITE Industries in Riverside County

BUSINESS FINANCING

The Economic Development Agency can help facilitate financing for businesses through a variety of programs including:

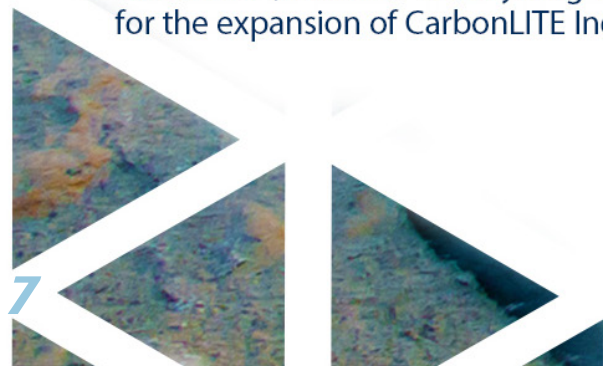
- ▶ Small Business Administration Loans
- ▶ Industrial Development Bond Financing for Manufacturers
- ▶ EB-5 Foreign Direct Investment
- ▶ Venture Capital
- ▶ Recycling Market Development Zone Loans

FAST TRACK

As part of its ongoing effort to become the most business-friendly county in the state, the County of Riverside instituted a strike force of development-related departments to begin a process improvement program designed to assist businesses engaged in the County's land use and permitting processes.

In FY 2015/2016, EDA launched 10 new industrial and commercial Fast Track projects delivering the following economic impacts:

- ▶ 1,264 full-time permanent jobs
- ▶ \$1.79 million capital investments
- ▶ \$1.49 million taxable sales





CALIFORNIA AIR RESOURCES BOARD SOUTHERN CALIFORNIA CONSOLIDATION PROJECT

A Riverside County coalition of leaders attracted the California Air Resources Board's (CARB) Southern California Consolidation Project representing a \$3.66 million investment and 400 high-paying jobs. The endeavor to attract CARB to Riverside County required a coalition of local leaders, government agencies, and private sector community partners. The coalition consisted of the following partners: Riverside County Supervisor John Tavaglione, the Riverside County Economic Development Agency, State Senate President Pro Tem Kevin de Leon, University of California President Janet Napolitano, Senator Richard Roth, Riverside Mayor Rusty Bailey, former Riverside Mayor Ron Loveridge, University of California, Riverside (UCR) Chancellor Kim Wilcox, UCR's College of Engineering-Center for Environmental Research and Technology, the City of Riverside and Riverside Public Utilities, and the Greater Riverside Chambers of Commerce. In order to accommodate CARB, UCR identified and offered, at no-cost to CARB, an 18-acre parcel on its campus that is ideally situated near existing research facilities and in the heart of Riverside's rich amenities.

CARB's existing facilities in the city of El Monte, which included the current Haagen-Smit Laboratory, no longer met CARB's programmatic requirements and did not allow CARB the space for scientific testing required to meet current air quality and climate change mandates. The existing state-owned property that CARB uses for vehicle emissions testing is too small to accommodate the construction of the requested replacement facility. CARB staff recommended a site in Pomona, in part because of its proximity to the existing site. Riverside County officials believed a location on the UCR campus provided a better opportunity.

The selection of the Riverside location by CARB came despite a staff analysis and final recommendation for a Pomona site. The CARB decision was made not only on project specific merits, but also due to the fact that the inland Southern California region is a major population center at the heart of California's growth. The move to Riverside County means an influx in infrastructure spending and technology investment for years to come. An immediate benefit upon arrival, UCR's College of Engineering-Center for Environmental Research and Technology and CARB will develop research synergies, provide educational opportunities for CARB staff, and build a future employee pipeline.

RIVERSIDE COUNTY BUSINESS CENTER GRAND OPENING

The Riverside County Business Center is designed to provide a physical space for EDA's business attraction efforts and to facilitate real time business concierge services for the business community and regional stakeholders. The Center provides retail business assistance in a modern business environment located adjacent to the County Administrative Center (CAC) and the ExCITE business incubator. The Center also provides arts and tourism related information to clients who wish to know more about the many cultural and recreational amenities the region offers.

The Center hosts business assistance seminars including the TriTech Small Business Development Center's Entrepreneur's Bootcamp which was a six-week series on how to start a business. The Center is also used by technology meet-up groups who need an after-hours location for their meetings. The Business Center has hosted over 386 customers including business owners, foreign delegations, and high-tech entrepreneurs.

TRADESHOWS AND SPECIAL EVENTS

The Economic Development Agency promoted Riverside County to more than 75,000 business decision makers at the following key venues:

- ▶ SelectUSA International Investment Conference, Washington D.C.
- ▶ Medical Design & Manufacturing in Anaheim, California
- ▶ International Council of Shopping Centers in Las Vegas, Nevada and San Diego, California
- ▶ Meet the Consultants Forum in Sacramento, California
- ▶ Inland Empire Manufacturing Summit, Ontario, California

BUSINESS INTELLIGENCE

Business intelligence (BI) is the research and GIS unit of the Riverside County Economic Development Agency. It maintains and updates the statistical reports posted on the Demographics page of the EDA website and supports the data and mapping needs of the various divisions that comprise EDA. BI responds to custom research and technical assistance requests from data users in general, such as business education, nonprofits and governments. Business Intelligence plays a vital role in the information infrastructure of EDA and informs planning, policy, grant writing, decision-making and reporting.

CUSTOMER SERVICE

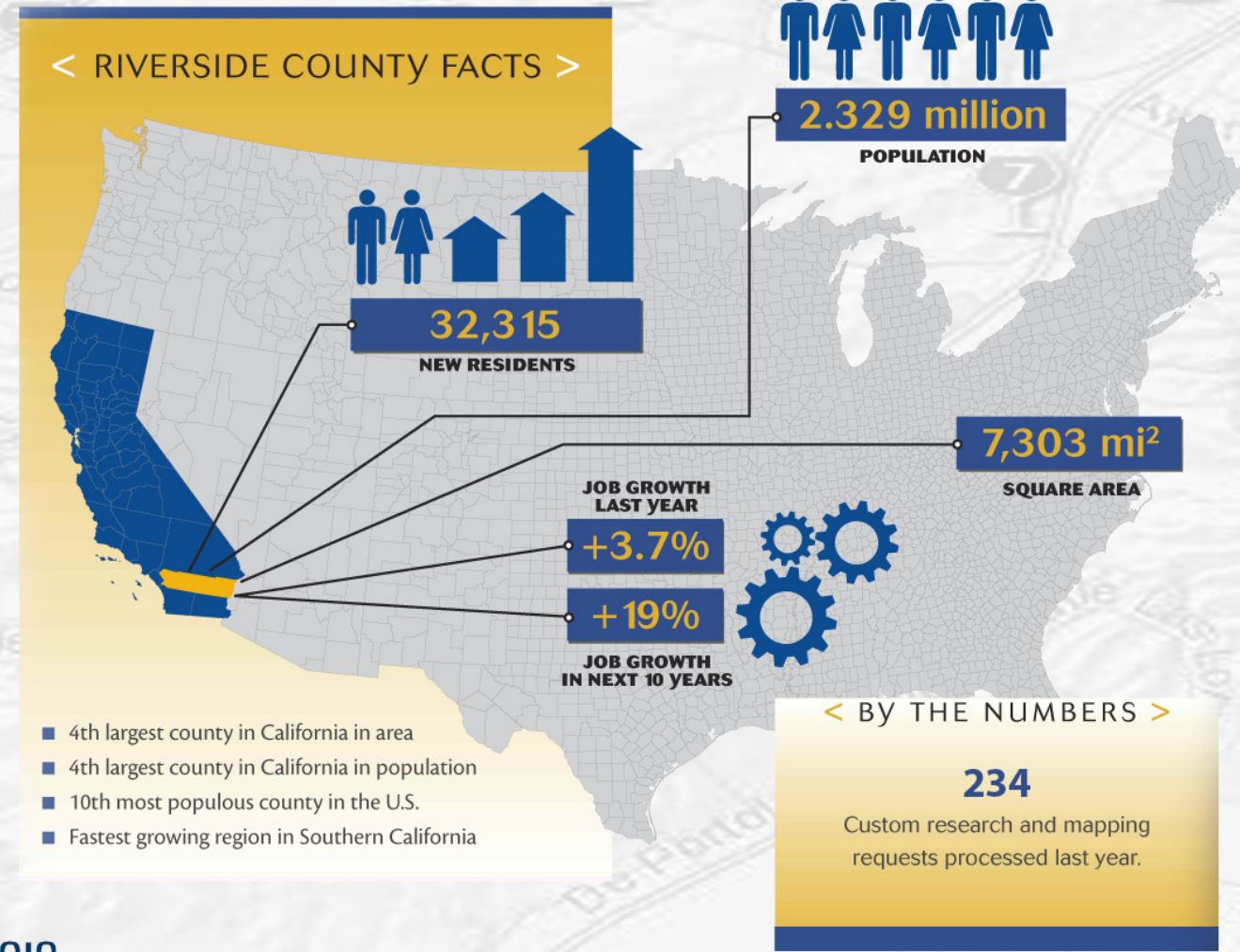
State Data Center

The State Data Center (SDC) is a partnership between the U.S. Census Bureau and the California Department of Finance Demographic Research Unit that disseminates census data and provides technical assistance to data users. EDA is the local affiliate of the SDC and BI is the liaison to the SDC.

One Stop Shop

For data users, a single point of contact for the dissemination of information is generally preferred and efficient. EDA staff has expertise in research and GIS mapping services including data collection and analysis, data dissemination, GIS analysis and mapping and technical assistance. A total of 234 custom research and mapping requests were received this FY, of which 53 were for GIS services. Customers included the following:

- ▶ Cambridge West Partnership
- ▶ City of Riverside
- ▶ Desert Recreation District
- ▶ Inland Empire Regional Chamber of Commerce
- ▶ Jones Lang LaSalle
- ▶ Murrieta Chamber of Commerce
- ▶ WDG Consulting
- ▶ University of California, Riverside



GIS

The Business Intelligence team created 10 story maps and web maps using ArcGIS Online templates developed by Geographic Information System (GIS) industry leader and Riverside County partner, Esri. Esri, located in nearby Redlands, is one of the world's top GIS companies and Riverside County actively uses their data to service customers and deploys their mapping technology to bring our projects to life. These maps were created to support EDA activities, ranging from site selection assistance to program management.

The other nine maps are listed below.

- ▶ Conference Centers
- ▶ Diversity
- ▶ Eco-Friendly Transportation
- ▶ Economic Development Regions
- ▶ Economic Diversity
- ▶ Educational Attainment
- ▶ High Poverty Areas
- ▶ National, State and Regional Parks
- ▶ Riverside Area Amenities
- ▶ Temecula Valley Wine Country

The Conference Centers, Diversity, Eco-Friendly Transportation and Riverside Area Amenities web maps were used for the California Air Resources Board site selection collaborative partnership.



FACILITIES MANAGEMENT

CUSTODIAL SERVICES DIVISION

The Custodial Services Division (CSD) has the largest number of staff in the EDA with 184 allocated full time positions and 25 Temporary Assignment Program (TAP) employees. Custodial cleaned approximately 5.4 million square feet of building space at 179 facilities. The ratio of actual staff to number of buildings is .97. This provides for very efficient staffing resources.

The CSD provides quality, reliable, and sustainable levels of custodial service by tailoring services to meet each customer's budgetary concerns while maintaining appropriate health and safety standards. Our main objective is to provide superior customer service through reduced cleaning costs, using green standards, and increased levels of cleanliness.

- ▶ The CSD continues to utilize a county-wide route/team cleaning strategy which reduces overall costs to our customers by approximately 28% while maintaining health and safety standards
- ▶ The CSD East County managed custodial services for the highly successful Riverside County Fair and National Date Festival, using mostly custodial TAP employees, for the sixth consecutive year
- ▶ The CSD took over the sanitation of Detention Health Services clinics at the Blythe, Indio, Smith Correctional Center, Southwest Justice Center, and Robert Presley detention facilities
- ▶ CSD continues to utilize the "Recycle/Reuse/Reduce Program" to provide savings for the County and our customers
- ▶ CSD West County provided emergency services for the Riverside County Coroner after a major security clearance delay with an awarded Contractor

MAINTENANCE SERVICES DIVISION

The Maintenance Services Division (MSD) is responsible for over 7.2 million square feet of county owned property and serve the thousands of people who work and deliver services to county citizens. In doing so, we have successfully completed; over 45,000 corrective and preventive maintenance work activities, over 100 tenant improvement / minor construction projects, and approximately 45 major facility renewal, emergency and life-cycle repairs projects. These facility renewal and major building system projects were valued at over \$1.5 million this year. Our team of professional technicians, supervisors, and administrative staff are committed at providing caring, professional and comprehensive facilities maintenance services. Our expertise is in customer service, building automation, heating, ventilation, air conditioning, plumbing, electrical, carpentry, construction, building envelope, and landscape. The MSD is a large division with 184 budgeted permanent positions and 154 full-time actual equivalents for FY 15/16. Our team provides turn-key facilities management and maintenance service in diverse County owned facilities or 300 buildings, spanning Riverside County's 7,200 square miles. This division is charged with safeguarding the County's building infrastructure valued at approximately \$2.3 billion. The MSD serves detention centers, health clinics, administrative centers, courthouses, law enforcement buildings and libraries.

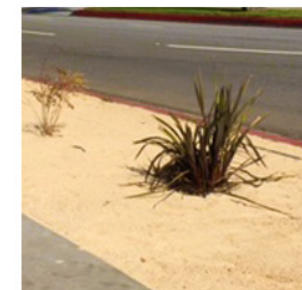
Our goal is to provide superior customer service and deliver; safe, comfortable, reliable, and efficiently operated and aesthetically pleasing buildings for all County employees and citizens.

Our comprehensive Preventive Maintenance Program is performed monthly within County owned facilities. Services provided include the following:

- ▶ Elevator / Conveyance Maintenance Services
- ▶ Water Treatment Services
- ▶ Underground and Aboveground fuel storage systems
- ▶ Regulatory Agency Compliance / Permitting due-diligence
- ▶ Fire Monitoring and Suppression Systems
- ▶ Boiler Systems
- ▶ HVAC/R Systems
- ▶ Cooling Tower Systems
- ▶ Air-Handler Delivery Systems
- ▶ Thermal Energy Storage Systems
- ▶ Plumbing Systems
- ▶ Circulating Pumping and Lift-Station Systems
- ▶ Building Envelope Systems

HIGHLIGHTS

- ▶ Grace Mellman Library HVAC project
- ▶ Public Health ADA Fire Life Safety project
- ▶ Various roof and HVAC replacement projects
- ▶ Major Mechanical and Electrical retrofit projects at Riverside CAC
- ▶ \$180k facility project at Fairgrounds
- ▶ \$1.3M facility renewal projects
- ▶ Water conservation initiative with a 40% reduction in landscape water usage
- ▶ Awards in the Comprehensive Housekeeping Achievement Maintenance Program (C.H.A.M.P)
- ▶ Partnership with CalFire and completion of the Bundy Rd. project at BCTC



OFFICE OF FOREIGN TRADE

COLLEGE OF FOREIGN TRADE

The Riverside County Office of Foreign Trade (OFT), in partnership with The Small Business Administration and The California Centers for International Trade Development, is planning the next College of Foreign Trade series starting in July 2016. This year, the seminars will focus on how to successfully export to India and Singapore. Experienced presenters will give an overview of the current state of each market with emphasis on economic, political and cultural conditions, followed by personal testimony from company executives with a long history of exporting to those markets. We are expecting over 100 manufacturers, service providers and economic development professionals to attend the two seminars.

PARTNERSHIP AGREEMENTS

The Office of Foreign Trade established a new formal partnership with organizations like "MAPLE," a new Canadian business development group adding to our long-time partnerships with Ex-Im Bank, the City of Riverside, Canada-California Business Council, Small Business Administration, Department of Commerce, Korea Trade Promotion Corporation (KOTRA), Hong Kong Trading Company, the LA Ports, the Governor's Office of Business, Economic Development and others.

EB-5 REGIONAL CENTERS

At this time last year, OFT had 11 projects that when completed, represented in excess of \$238 million. A year later, the Office of Foreign Trade is tracking 40 EB-5 projects in "Targeted Employment Areas," that when completed will represent over \$906 million in invested dollars and produce over 12,000 jobs County-wide. One of the newer EB-5 projects starting this year will be a \$30 million, 5 story extended stay hotel in the City of Riverside. Other new projects this year include pizza restaurants, day care centers, wineries, resorts and senior living centers.



Extended stay hotel in City of Riverside

EB-5 HOTEL PROJECT



AGRICULTURE SUMMIT

Riverside County EDA/Office of Foreign Trade, in partnership with The U.S. Commercial Service, The Small Business Administration, California Centers for International Trade and the City of Palm Springs, hosted "Exporting Agriculture" International Trade Summit 2015.

With over \$2 billion in Agriculture in Riverside County, the Office of Foreign trade conducted an Agriculture Summit program to educate the growers about the benefits and opportunities of exporting to foreign markets. It also provided an international matchmaking opportunity for growers. With growing demand around the globe for food products, our county can expand crop yields and markets that will create jobs here in the U.S. and encourage foreign direct investment into the agriculture industry.

Presentations by Western United States Agriculture Trade Association (WUSATA), University of California Agriculture & Natural Resources, The Farm Services Agency of the United States Department of Agriculture (USDA), Disaster Assistance and Regional Export Finance departments of The Small Business Administration (SBA) covered not only the advantages and opportunities of having an international trade strategy, but addressed timely subjects affecting the agriculture industry, like the recent drought and changes in the newly passed farm bill.

Invited to the Agriculture Summit were the growers, businesses in the food processing and packaging industries, international marketers of food products and agencies that provide help and services to the Agriculture Industry.



A SOUTHERN CALIFORNIA PROCUREMENT, TRADE & MANUFACTURING SUMMIT

This unique event combined the goals of Foreign Trade and Procurement goals of many government and non-government agencies as well as the numerous goals of the Economic Development for our Agency. This event encouraged companies who want to know more about the opportunities of Foreign Trade. The County partnered with the Department of Commerce, The Small Business Administration and our own County Fleet and Purchasing Department to help us conduct this event.

Riverside County presented our 2nd annual Procurement Summit. We assembled as many as 100 purchasing agents that buy billions of dollars of goods and services each year. Businesses from Riverside County and all over Southern California were invited to network with buyers in hope of growing their businesses. There were over 800 people in attendance and over 16 hours of seminars covering topics in trade, procurement, small business and manufacturing best practices. There were over 100 exhibiting companies for networking purposes. Procurement saw over 800 "one-on-one" appointments between buyers and attending companies. The Summit is a great business retention effort and also brings businesses to Riverside.

This event was funded with the registration and booth fees collected from the exhibitors. Except for County staff salaries, working and organizing the event, all costs were covered through the fees collected from the event.



SOUTHERN CALIFORNIA PROCUREMENT, TRADE & MANUFACTURING SUMMIT

FOREIGN DELEGATIONS

This year, the Riverside County Office of Foreign Trade welcomed 29 delegations with a total of 544 delegates from the Republic of China, Germany, India and Turkey and 36 investor groups with a total of 184 investors from China and Turkey.



MARKETING

THROUGH CREATIVE DESIGN AND BRANDING, ADVERTISING, MEDIA OUTREACH, AND SPECIAL EVENT MANAGEMENT, MARKETING HIGHLIGHTS THE SUCCESSES OF RIVERSIDE COUNTY...SHARING THE MESSAGE WITH RIVERSIDE COUNTY COMMUNITIES AND BEYOND...

MARKETING DIVISION ACCOMPLISHMENTS

Highlighting the assets of Riverside County, the EDA Marketing Team facilitated more than 40 special events. Among these events was the 6th Annual Riverside State of the County with over 565 attendees, the tourism focused 3rd District Summit with over 300 attendees, and the annual 5th District Symposium with nearly 300 attendees.

Capital Improvement Projects including the East County Detention Center Construction Kickoff and the Southwest Justice Center Groundbreaking along with Transportation lead projects including the Clinton Keith Extension Project Groundbreaking, Hobson Way Ribbon Cutting, Clay Street Groundbreaking, and Airport Boulevard Ribbon Cutting all received a dose of Marketing expertise through graphic design, marketing and event management.

Inaugural events included the 5th District Volunteer Appreciation Awards which honored the volunteers in the cities and communities of the 5th District. Eleven volunteers were awarded with a finale that included two Volunteer of the Year Awards and a Cultural Achievement Award. The kick-off celebration was enjoyed by 200 guests.

Riverside County has many youth focused programs and Riverside County Youth were highlighted by several special events including the Annual Jamil Dada Character Excellence Youth Awards and the Youth Advisory Council's (YAC) Annual Youth Summit. Marketing played a lead role in the Character Excellence awards, providing event management, marketing, branding, sponsorship and videography coordination while coordinating marketing, branding and videography support to the YAC event. Marketing staff created several individual video highlights for future uses, including website placement, from the b-roll shot at each event.

Team members worked with the media both on and off camera to cover and promote agency events, programs and activities through numerous interviews, press releases, public service announcements and news alerts.

The Healthy Riverside County Initiative continued to be a focus in 2015 receiving marketing support as the team assisted with several Riverside County Employee Campaigns including the Datefest 5k.



Creative and talented Marketing staff designed and produced in-house hundreds of original marketing materials including advertisements, event invitations, programs, flyers, direct mail pieces, reports, signage and banners. The window wrap for the new Riverside County Business Center was created in-house along with a number of support materials for the Economic Development (ED) Unit such as the Business Resource Guide, Higher Education Profile, ED Info-graphics, ED Dashboard, PowerPoint Templates and more.

Economic Development was highlighted during the much anticipated Grand Opening of the Riverside County Business Center. Marketing coordinated the evening's festivities as well as the furniture donation which outfitted the center, providing a sleek new, modern look. The Center is ready and open for business. A new ED branding campaign Moving Business Forward was also launched and is being utilized by the ED and Business Solutions Teams.

The Division managed more than 35 EDA funded sponsorships with outside public and private agencies, including the production of advertising materials and distribution of entitlements.



Jelly Belly Plane and Bill Braack's Smoke-N-Thunder Jet Car. Additional performers included Jon Melby, John Collver, Vicky Benzing, The Red Eagles Formation Display Team and The Golden Stars Skydiving Team.

The Air Show provided entertainment for all ages. The 25,000 attendees were treated to a wide variety of vintage aircraft displays, high-flying aerobatics, live entertainment and food and beverage vendors. In addition to the Air Show, spectators had an opportunity to attend the Wine and Brew Fest to sample some of Inland Southern California's premier wine and craft brews. Attendees tasted the delights of gourmet food trucks and rocked-out to live music, with a special concert by Idyllwild artist – Casey Abrams, all while experiencing a taste of Temecula Valley.

The Air Show marketing material was designed by one of Marketing's own graphic artists. The team also provided event management, marketing, advertising, media, VIP and sponsorship coordination.

RIVERSIDE COUNTY FAIR & NATIONAL DATE FESTIVAL

Responsible for the marketing, advertising, media and guest relations for the annual Riverside County Fair & National Date Festival, the Marketing Team used effective promotion and persuasive media outreach to ensure another successful year. Attendance of more than 270,121 fairgoers enjoyed concessions, carnival fun, remarkable Southern California weather, must-see entertainment and a variety of other Fair activities.

The Division also supported the Queen Scheherazade Scholarship Pageant and inaugural Music Scholarship Pageant with marketing, graphic design and event management services.

HEMET-RYAN AIR SHOW AND RIVERSIDE COUNTY FOOD TRUCK FESTIVAL

Back for its 10th year, the Hemet-Ryan Airshow was held on Saturday, June 4, 2016 in record temperatures. There was something for all 20,000 attendees to enjoy including veteran performers Jon Melby, John Collver, Vicky Benzing and The Red Eagles Formation Display Team.

An added bonus to this year's Air Show was the Riverside County Food Truck Festival. The 3rd Annual Riverside County Food Truck Festival rolled into Hemet with 11 food trucks showcasing a variety of the hottest eats Riverside County has to offer.

The Hemet-Ryan Air Show and the Riverside County Food Truck Festival, presented by the Riverside County Economic Development Agency, the Riverside County 3rd District Supervisor, and the City of Hemet, was free to the public, including parking.

Hemet-Ryan's marketing materials were designed by one of Marketing's own graphic artists and the team also provided event management, marketing, advertising, media, VIP and sponsorship coordination.

Annual events included the Temecula Valley Balloon and Wine Festival, Show and Go Car Show, Concert for Heroes, Temescal Valley Community Faire, Festival of Trees Gala, as well as many Greater Riverside Chamber of Commerce events.

The Team also supported the planning and implementation of many community events such as the Lake Mathews Town Hall Meeting, 9/11 Memorial Observation at the County Administrative Center, and the Galilee Center Ribbon Cutting in Mecca.

The Division continued its coordination and marketing of the Riverside County Food Drive, Take a Bite Out of Hunger. The 8th Annual Campaign ran from December 1, 2015 through March 31, 2016, with a successful county employee Jean Sticker campaign component that allowed employees to donate money toward the purchase of a sticker allowing them to wear jeans to work for one day. The 2015-2016 Sticker Campaign raised \$25,181 in cash donations. All the money collected benefitted Riverside County Food Banks and Pantries.

FRENCH VALLEY WINGS AND WINE AIR SHOW

The first Air Show to be held at French Valley Airport in Murrieta, CA took place on November 7, 2015 and was presented by Upper Limit Aviation. The show featured exciting performances by aerobatic stunt pilot Kent Pietsch and his

PROJECT MANAGEMENT

PROVIDING COMPREHENSIVE PROJECT MANAGEMENT AND TECHNICAL SERVICES FOR THE CONSTRUCTION OF COUNTY FACILITIES

The Project Management Office is responsible for public works at County facilities which consists of new construction, renovations and repair of existing facilities. Services provided include feasibility studies, development and implementation of capital improvement programs, cost estimating, scheduling, architectural design, medical planning, furniture design, engineering of building systems, bidding of public works through various project delivery methods, construction, construction management, labor compliance, environmental planning and regulatory compliance, inspection of construction activities inclusive of numerous specialty inspections, inspection of shop fabrication, move planning, relocation, contract enforcement and acts as the deputy building official for County facilities.

This office proudly serves Riverside County by supporting the Board of Supervisors, Animal Services, Assessor Clerk/Recorder, Clerk of the Board, County Counsel, Department of Public Social Services, District Attorney, Fire, Information Technology, Library System, Riverside University Health System-Medical Center/Behavioral Health/Care Clinics/Public Health, Office of Public Defender, Parks and Recreation, Probation Department, Sheriff, Superior Court of California, United States Bankruptcy Court, United States District Court and the Transportation and Land Management Agency.

BY THE NUMBERS

\$200 MILLION

145 PROJECTS IN DESIGN

\$478 MILLION

62 PROJECTS IN CONSTRUCTION

\$56.3 MILLION

70 PROJECTS COMPLETED





STEM NURSING EDUCATION & ALLIED HEALTH BUILDING



RIVERSIDE UNIVERSITY HEALTH SYSTEM NURSING EDUCATION



EAST COUNTY DETENTION CENTER CONSTRUCTION SITE

REAL ESTATE

EDA's Real Estate Division handles an array of full-service public real estate transactions for and throughout the County of Riverside. The Division pursues the acquisition and disposition of real property, which may include site analysis, environmental analysis, negotiations, contract formation, relocation, appraisal title and escrow services. The Division is also responsible for managing the allocation of space to various departments in County owned facilities which encompass approximately 10 million square feet of County owned space.

The Real Estate Division also provides professional leasing, related lease administration and property management services. The Division manages a lease portfolio of approximately 4.8 million square feet of County leased space which includes the administration and management of approximately 460 lease agreements.

The Division supports a wide range of County services and need-driven projects, including the acquisition and leasing for Administration, Alternative Energy, Aviation, Behavioral Health, Conservation, Communication, Economic Development, Healthcare, Housing, Information Technology, Parks, Public Safety, Public Health, Social Services and Transportation projects.

ACCOMPLISHMENTS

- ▶ Completed the acquisition of real estate valued at over \$21.2 million
- ▶ Managed a lease portfolio of approximately 460 leases totaling over 4.8 million square feet of leased space
- ▶ Completed the contracting and construction portion of the historic Vail Ranch Renovation Project through a public/private partnership with Artec Partners. This project encompasses the full renovation and development of over 28,000 square feet of retail and historical displays on 4 acres in the Redhawk area of Temecula. Vail Headquarters includes 6 historic buildings which were once the site of the Vail Cattle Ranch established in 1902. The site hosts Temecula's oldest building, the now historically renovated Wolf Store built in 1865, which served as a stagecoach stop along the famed Butterfield Overland Stagecoach Route. The site will now provide the community with a historic gathering point and also host local events, gatherings and concerts
- ▶ Completed the acquisition of an existing facility in the City of Perris for renovation and future use as a Fire Administration Headquarters. The new site, located on 4th Street in the City of Perris, will provide Riverside County Fire Department with over 7 acres of land including two existing buildings containing over 16,000 square feet of space for pursuit of a new Headquarters' Project
- ▶ Completed a new modern 50,000 square foot office building for the Department of Public Social Services (DPSS) in the City of Moreno Valley. This facility will house the Department's Self-Sufficiency Division which provides welfare-to-work assistance and family support. The new facility was delivered under a design/build/lease public/private partnership



Real Estate has been working with DPSS to deliver over 300,000 square feet of new space for the Department which represents over \$130 million in private investment and the creation of 1,290 construction jobs and approximately 1,600 long term jobs

- ▶ The Division is pursuing the contracting and planning to include multiple healthcare facilities that will greatly expand and enhance healthcare related services at Riverside University Health System Medical Center in Moreno Valley. The first phase project will be an approximate 190,000 square foot Medical Office Building to be delivered through a public/private partnership with the Trammell Crow Company. Second phase projects will include the delivery of a major Behavioral Health Hospital and a separate Skilled Nursing Facility to be pursued through a public/private partnership with the Morongo Band of Mission Indians
- ▶ Real Estate is currently pursuing public/private partnership clinics in five new locations including Corona, Riverside, Jurupa Valley, Banning and Hemet. Each Clinic will provide health and behavioral health services as



- ▶ Engaged in the elimination and wind-down of the former County of Riverside Redevelopment Agency (RDA) as well as the sale and transfer of all previous RDA owned assets. Real Estate is currently marketing and fielding offers on all Successor Agency properties which total 75 parcels and over 618 acres
- ▶ Coordinated the completion of 4,586 property management requests for service in County-occupied leased facilities

SPACE MANAGEMENT OFFICE

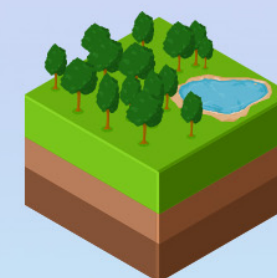
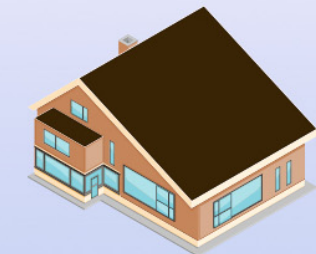
The Space Management Office is responsible for maintaining all County owned facilities architectural plans and related data as well as performing physical space verifications of County owned or used space. Space Management is also involved in office relocation projects for both internal and external departments/divisions. It is a requirement of the Space Management Office to provide meaningful data analysis and modeling of existing and project space needs, conduct on-going facility audits with the objective of physically verifying all spaces annually, develop space management policies and best practices and establish long term planning for growth County-wide.

BY THE NUMBERS



4.8 million
square feet of County leased space

Completed the acquisition
of real estate valued over
\$21.2 million



3,946 acres of land added to
the County's existing conservation
and open space habitat

well as may provide pharmacy and urgent care services in each community. The proposed Clinics will range in size from 30,000 to 40,000 square feet of modern health care space

- ▶ The Division worked along with our County Transportation Department to acquire right-of-way for the construction of the newly opened Clay Street, Magnolia Avenue and Airport Boulevard Grade Separations. These projects serve to enhance overall public safety through the separation of train and vehicular traffic. The Division also worked to acquire the necessary right-of-way for major interchange projects now under construction and that include Newport/I-215 and Jefferson/I-10. These interchange projects improve traffic flows and provide enhanced safety for pedestrians and vehicles traveling along our major highways
- ▶ Completed the acquisition of over 3,946 acres of land for the Western Riverside County Regional Conservation Authority to add to Riverside County's existing conservation and open space habitat. Of the total acquired property, Real Estate successfully transacted the single largest piece of property in program history totaling 2,838 acres of land which will also be set aside as part of the Multiple Species Habitat Conservation Plan for Riverside County

WORKFORCE DEVELOPMENT

The Workforce Division helps employers find the skilled workers they need to be competitive in today's global economy and to get job seekers into in-demand jobs and careers as quickly as possible by assisting them with the skills attainment they need to succeed.

Under the leadership of the County's Workforce Development Board, EDA works to make the local workforce and training system job-driven, integrated and effective. The Division operates four comprehensive Workforce Development Centers, three satellite offices and six Youth Opportunity Centers offering specialized education and employment services for youth and young adults, ages 14 through 24.

We also offer a portfolio of business services that are offered at no-cost to the business community. The primary services are business analysis and coordination of resources, recruitment and pre-screening of qualified candidates, customized training programs, including wage subsidies to offset training costs, tax incentive coordination and outplacement services for businesses that are downsizing or closing.

The Workforce Division focuses on using practices and proven strategies for getting people back to work and engaging with employers, industry associations and labor unions to ensure training programs help employers get the staff they need. Our services are available to any individual who is willing and able to work including veterans, individuals with disabilities, and others with barriers to employment.



20,279

IN PERSON VISITS TO WORKFORCE DEVELOPMENT CENTERS.



670

LOW-INCOME YOUNG ADULTS WHO RECEIVED LONG-TERM AND COMPREHENSIVE SERVICES THROUGH OUR YOUTH OPPORTUNITY CENTERS.



78.43%

PERCENTAGE OF YOUTH SERVED WHO ATTAINED AN EDUCATIONAL DEGREE OR CERTIFICATE.



ACCOMPLISHMENTS

- ▶ Assisted 684 businesses (283 new) and (401 repeat)
- ▶ Provided 19 additional businesses and 1,569 affected workers with outplacement services
- ▶ 1,409 enrolled job seekers received individual career counseling, skill development and job placement services. Placed 434 customers into training. Each month an average of 1,689 job seekers accessed services and resources at the centers
- ▶ Executed 109 On-the-job-Training and Employment Training Panel contracts with local businesses to help them off-set the costs of hiring and training employees
- ▶ 64.41% of adult job seekers and 67.14% of laid-off workers were placed in employment. 78.51% of the adults and 81.73% of the dislocated workers retained their employment six months after initial placement
- ▶ Provided 670 young adults with long-term and comprehensive services through our Youth Opportunity Centers. Services focused on academic achievement, workforce preparation, financial literacy and leadership development
- ▶ 78.43% of the youth served attained an educational degree or certificate and 56.49% were placed in employment or enrolled in a post-secondary education program
- ▶ Each of these performance measurements met or exceeded state and federal goals set for Riverside County in FY 2015/2016



HOUSING AUTHORITY

HIGHLIGHTS

HOUSING CHOICE VOUCHER SECTION 8 (HCV) PROGRAM

The HCV program is a HUD-funded rental assistance program that subsidizes the monthly rent for over 9,000 low-income families throughout Riverside County. Households are recertified for continued assistance once a year. The Housing Authority's HCV program pays landlords over \$68 million annually on behalf of low-income families. Over half of the families served include persons with disabilities and/or elderly individuals, including veterans. For the past 13 years, HUD has rated the Housing Authority as a "High Performer" agency for its part in administering this program.

SHELTER PLUS CARE

The Housing Authority's Shelter Plus Care Program is the largest provider of permanent housing for homeless persons with disabilities in the County of Riverside Continuum of Care network. Shelter Plus Care combines ongoing rental subsidies with supportive services provided by local service providers such as the Department of Mental Health. The program currently provides housing to 123 households which include 90 individuals who were chronically homeless. During FY 2015/2016, Shelter Plus Care provided rental assistance and supportive services to 16 formerly homeless participants.

HOUSING OPPORTUNITIES FOR PERSONS WITH AIDS (HOPWA)

The HOPWA program provides an array of housing services for low-income Riverside County households affected by HIV/AIDS. During the FY 2015/2016, the HOPWA program provided 425 individuals with direct financial services in the form of permanent rental subsidies, short term rent, mortgage and utility assistance, deposit assistance, housing information services and housing case management. These services are critical to ensuring housing stability which in turn allows greater access to medical services, HIV drug regimens, prevention programs and psycho-social services. In partnership with the City of Riverside, the County utilized approximately \$320,000 in HOPWA funding for acquisition and rehabilitation of condominium rental units in Palm Springs restricted to qualified low-income households.

SECURITY DEPOSIT ASSISTANCE (SDA) PROGRAM

The SDA Program is funded through County of Riverside Home Investment Partnership Act (HOME) funds. The program provides up to 50% of the security deposit payment to help low-income households including those that are homeless find units that are safe, affordable and close to resources. During the FY 2015/2016, 188 households received much needed security deposit assistance, which eliminated a major barrier to accessing housing, even with a rental voucher.



HOMELESS PREVENTION AND RAPID RE-HOUSING PROGRAM (HPRP)

The Housing Authority continues to provide rapid re-housing and homeless prevention services to homeless families and families at imminent risk of homelessness. HPRP services were previously funded through the American Recovery and Reinvestment Act of 2009 (ARRA) which was discontinued in August 2012 when the one-time funding was depleted. Through the commitment of local Emergency Shelter Grant (ESG) Program, HASA and HOME funds, local families can continue to access deposit assistance, short term rental assistance, emergency shelter and housing locator assistance to reduce stays in local emergency shelters and to prevent homelessness. During the FY 2015/2016, 189 households received rapid re-housing and prevention assistance.

VETERANS AFFAIRS SUPPORTIVE HOUSING (VASH) PROGRAM

The VASH program is a collaboration between the Housing Authority and the Loma Linda VA Medical Center aimed at addressing the unique needs of homeless veterans. The Housing Authority has continued to expand this critical program and successfully secured additional vouchers from the U.S. Department of Housing and Urban Development (HUD), bringing the agency's total vouchers



to 589. During the FY 2015/2016, the VASH Program provided over 453 homeless veterans with monthly rental assistance. Approximately 134 of those formerly homeless veterans were newly added to the VASH program.

SUPPORTIVE SERVICES FOR VETERAN FAMILIES (SSVF) PROGRAM

The SSVF Program provides supportive services to very low-income veteran families who reside in or are transitioning to permanent housing. During the FY 2015/2016, the Housing Authority provided 27 veteran households served under U.S. VETS with homeless prevention and rapid re-housing assistance.

FAMILY SELF-SUFFICIENCY PROGRAM (FSS)

The FSS Program assists families to become economically independent from government financial assistance within a five-year period. On December 8, 2015, the HA received \$483,000 to link Riverside County adults in the Section 8 – Housing Choice Voucher program to local organizations that provide job training, childcare, counseling, transportation and job placement. This was the third largest award made in California. During the FY 2015/2016, the program served 399 participants. Eleven families graduated this past year and no longer require rental assistance.

AFFORDABLE PUBLIC HOUSING

The Housing Authority owns and operates Affordable Public Housing which provides quality affordable housing to low-income families, seniors and persons with disabilities. The public housing serves 464 families across Riverside County. During the FY 2015/2016, 82 new families moved into public housing.

CAPITAL FUND PROGRAM

The Capital Fund Program is responsible for maintaining and modernizing the Housing Authority's existing public housing buildings and grounds. During the FY 2015/2016, several projects were completed including the replacement and installation of energy efficient HVAC units and air ducts at Beaumont Grove and San Jacinto Apartments, kitchen and bathroom remodel and other facelifts at Fort Drive Apartments and installation of water conservation water valves at El Dorado Apartments.

TRANSFER OF NSP PROPERTIES

In May of 2016, 11 scattered rental properties (35 units) that were acquired and rehabilitated under the Neighborhood Stabilization Program (NSP) between 2009 and 2011 in Desert Hot Springs, Cathedral City and Blythe, were transferred to the County from a struggling non-profit organization. The properties will be managed by the Housing Authority's nonprofit arm, Riverside Community Housing Corporation, and the 55-year affordability period will continue to be preserved for very low-income households.

HOUSING

HIGHLIGHTS

In FY 2015/2016, EDA Housing invested approximately \$2 million for the development of 112 affordable rental housing units; issued over \$1.3 million in mortgage tax credits to 31 homebuyer households; utilized nearly \$600,000 in first-time homebuyer assistance for 14 low-income family households; and expended \$1.7 million in NSP funds to acquire and rehabilitate six foreclosed homes in Riverside County.

ACCOMPLISHMENTS

- ▶ \$1.5 million in HOME funds and approximately \$1.4 million in former Redevelopment Agency for the County of Riverside housing funds were invested for the development of 112 affordable rental housing units for low-income families.
- ▶ 31 homebuyer households in Riverside County received tax credits totaling \$1.38 million in Mortgage Credit Certificates.
- ▶ Approximately \$600,000 was provided in first-time homebuyer assistance for 14 family households to obtain the American dream of homeownership.

HOUSING DEVELOPMENT

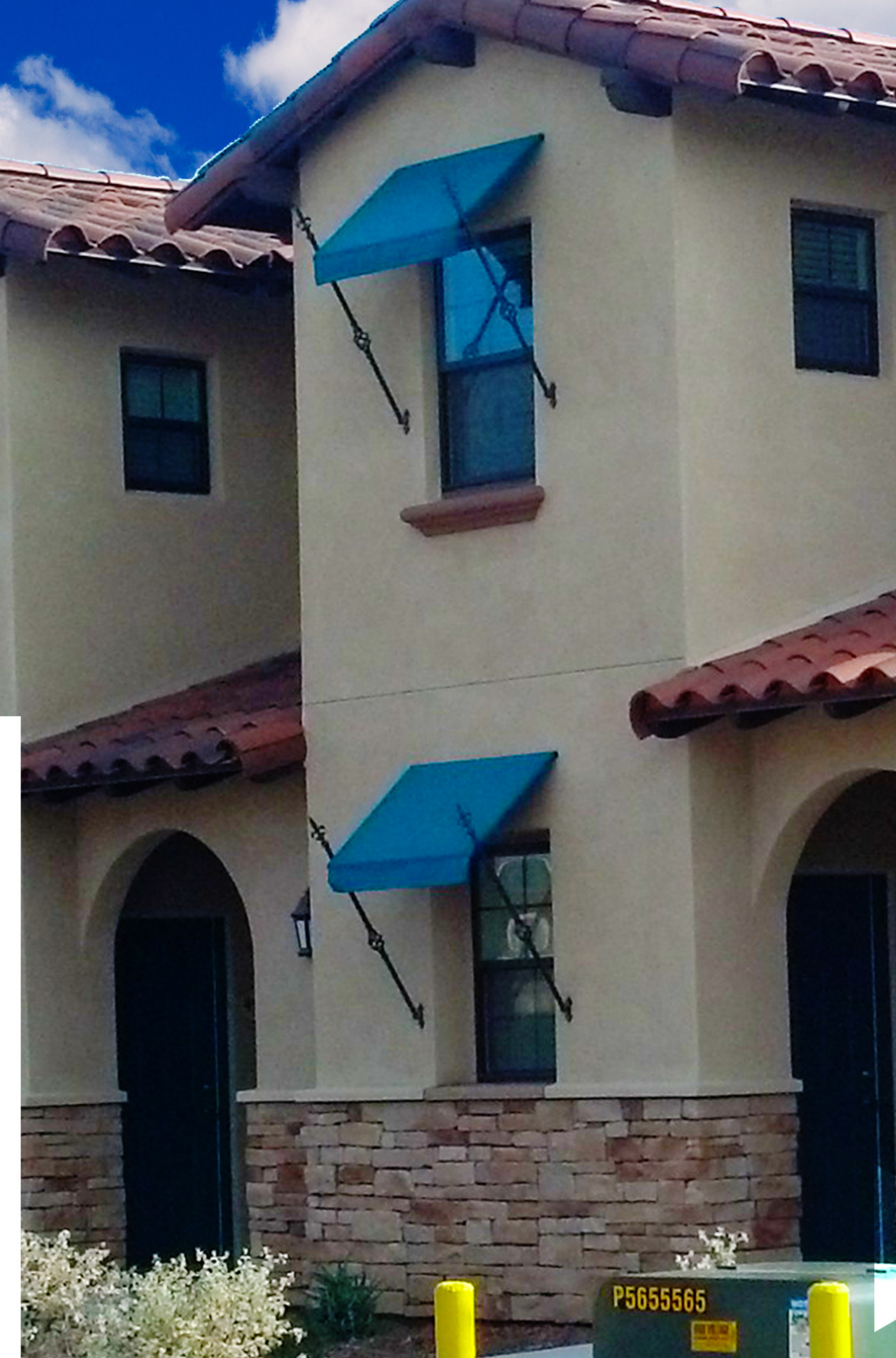
Home Front at Camp Anza – Riverside, CA – \$500,000 in County HOME funds was provided for the development and new construction of a 30-unit apartment complex in the City of Riverside. A total of 29 units will be rented to very low- and low-income households and to the extent permitted by law, preference will be given to tenant applicants as qualified low-income services-disabled veteran households, qualified low-income veteran households and qualified low-income households. The project included the restoration and rehabilitation of a vacant historic building known as the Officer's Club. The goal was to preserve and enhance the integrity of the Officer's Club building and integrate it into the project to serve Veterans. Residents have access to the pool, tot lot, picnic areas, laundry facilities and club as a multipurpose community center. The project was completed in March of 2016.

Perris Family Apartments – Perris, CA – The County provided \$1 million in HOME funds for the development and new construction of a 75 unit apartment complex in the City of Perris. A total of 74 units will be rented to qualified low-income households and 11 of the affordable units will be designated HOME units for a period of 55 years.



15 of the units are also reserved for disabled individuals under the Mental Health Services Act. The community consists of one and two-story units and offers one, two and three bedroom units. Residents have access to a pool located right outside the 2,800 square foot community room, playgrounds, basketball courts, a computer learning center with internet access and after school programs such as tutoring. The community is situated in a convenient location within close proximity to schools, restaurants, grocery stores and workforce opportunities.

Villas De Josue Mobile Home Park – Thermal, CA – Approximately \$1.4 million in former Redevelopment Agency Low and Moderate-Income Housing funds provided for the acquisition, redevelopment and rehabilitation of an unpermitted mobile home park located in the community of Thermal. In addition, a \$50,000 grant from the Coachella Valley Air Quality Enhancement Project Fund administered by the Housing Authority's nonprofit arm, Riverside Community Housing Corporation, contributed to landscape improvement and paved driveways and walkways. Prior to acquisition, the park was deteriorating and unsafe for families. The project included the restoration and rehabilitation of a 15,000 gallon water tank, well pump and housing enclosure, installation of a new septic system, paved driveways and walkways, desert landscaping, tot lot and solar lighting. The goal was to redevelop the site up to building and fire code in order to permit the mobile home park. A total of nine units are reserved for low-income families. The project was completed in September of 2015.



HOME OWNERSHIP

Mortgage Credit Certificate (MCC) – EDA has issued approximately \$1.3 million in Mortgage Credit Certificates assisting 31 homebuyer households in reducing the amount of their federal income tax liability and increasing homebuyer's purchasing power.

First-Time Home Buyer (FTHB) Program – EDA Housing provided approximately \$1 million in HOME funds for down payment assistance to 24 first-time homebuyer households.

Neighborhood Stabilization Program (NSP) – EDA Housing expended approximately \$1.7 million in NSP funds for acquisition, rehabilitation and resale of six foreclosed homes to very low-income to middle-income households. Over \$397,000 in homebuyer assistance was provided.

Community Development Financial Institutions (CDFI) Program – The CDFI program facilitates loan packaging approval and permitting of "Polanco" mobile home parks limited to a maximum of 12 mobile home park spaces. For FY 2015/2016, one loan has been approved and one loan is expected to close at the end of June for a total of four loans for construction since inception. Thus far, one park has completed construction and installation of 12 mobiles for low-income households. Two additional parks are under construction. The mobiles are anticipated to be installed next fiscal year.

AVIATION

ANNUAL AIR SHOWS

The Aviation Division oversees operation of five regional airports servicing Riverside County business, and serves as host of the air shows held at the Hemet-Ryan Airport and the Jacqueline Cochran Regional Airport in alternating years. These exciting free community events are growing each year with record-breaking attendance and the outstanding support of the military and private organizations. Visitors are thrilled to enjoy a day of dazzling aerobatic performances, static displays and unique vendors.

PROPOSED IMPROVEMENT PROJECTS

Hemet-Ryan

- ▶ Five-acre land acquisition for runway protection zone
- ▶ Taxiway delta pavement rehabilitation
- ▶ California Department of Forestry base relocation
- ▶ ALP Update

Jacqueline Cochran Regional Airport

- ▶ Approach land acquisition runway 17-35
- ▶ Heavy apron pavement construction
- ▶ Pavement rehabilitation runway 17-35

French Valley

- ▶ Design and construction pavement rehabilitation south apron
- ▶ Pavement rehabilitation design runway 18-36
- ▶ Pavement rehabilitation design taxiway alpha

Blythe

- ▶ Apron pavement rehabilitation phase 1 design and construction
- ▶ Replace airport fencing phase 1 design and construction

Chiriaco Summit

- ▶ Pavement rehabilitation runway 6-24



© Tommy Anderson Photography



HIGHLIGHTS

California Air Resources Board Relocation Project. The Energy Division played a lead role coordinating efforts leading to the successful selection of the City of Riverside as the new location for the research facilities for the California Air Resources Board (CARB). Not only did the Energy staff write the project RFI document, they also partnered with EDA Marketing to provide PowerPoint presentations and brochures for every site visit and presentation made to the CARB staff. The relocated facilities will bring hundreds of high paying jobs to the area, and will lead to improvements in the Inland Empire's air quality.

OpTerra Solar Project. This \$54 million project, launched last year by the Energy Division, is well underway. Five sites are completed and generating electricity: Temecula CAC, Perris Coroner, Perris Sheriff Station & Health Care Clinic, Palm Desert Sheriff Station and the Western Riverside Animal Shelter. Two more large sites have completed construction and are waiting for the Southern California Edison grid tie-in: San Jacinto Animal Shelter and the Ben Clark Training Center. The program is being expanded to include six more sites: Palm Springs CAC, Desert Hot Springs Mental Health Clinic, Cabazon Sheriff Station, Robidoux Library, Rubidoux Health Clinic and Crestmore Heights. Although the first five sites are relatively small, together they have already generated over 1.6 million kilowatt hours in less than seven months.

Cool Planet Award. In October of 2015, the EDA Energy Division was presented with a Cool Planet Award for 1st Place in the Large Government/Institutional sector. The Climate Registry and Southern California Edison (SCE) presented the award at the Aquarium of the Pacific in Long Beach, as well as at a Board of Supervisors meeting.

The Cool Planet Award recognizes the valuable contribution of Southern California Edison business customers who demonstrate exemplary leadership in energy and carbon management within their business size and industry. It celebrates SCE's business customers and their commitment to installing energy efficiency projects, participating in demand response programs and implementing environmental and GHG management systems.

Electric Vehicle Charging Station Opportunities. 42 electric vehicle charging stations are now in stock for installation at 30 various county-owned facilities. The stations were made possible by a grant from the California Energy Commission. Installation is expected to begin in August 2016.

Two more opportunities to acquire EV charging stations have become available through programs offered by Southern California Air Quality Management District (AQMD) and Southern California Edison (SCE). EDA Energy Division will partner with the Western Riverside Council of Governments (WRCOG) on the AQMD grant. This grant will fund four more EV charging hoses in each of the public downtown parking structures. SCE's "Charge Ready" program is evaluating large sites for the installation of 10 EV charging spaces per site (Southwest Justice Center, Ben Clark Training Center and the Riverside University Health System Medical Center). Expanding the offering of public EV charging stations will help improve the air quality in Riverside County by reducing greenhouse gas (GHG) emissions.



COMMUNITY SERVICES

The Community and Cultural Services Division (CCSD) provides exceptional cultural services to enhance and maintain a high quality of life in Riverside County. The CCSD oversees the operation of 60 County Service Areas (CSAs), Community Development Block Grants, Emergency Solutions Grants, Neighborhood Enhancement Unit, 35 County Libraries, Edward Dean Museum & Gardens and the Perris Cemetery.

Each CSA is authorized to provide public services based on the individual needs of each community. In fact, before services can be rendered, a super majority (67%) of the voters must authorize the service. The CSA encompasses 7,208 square miles and typically provides services in communities that lack city government, special districts or other special service providers. The CSA provides municipal services to its community while controlling consumer costs and reducing price escalations. Customer service and value remain our highest priorities. The CSA is funded through a combination of special taxes, property taxes and user fees to provide services to our customers.

AUTHORIZED SERVICES

- ▶ Parks, Recreation and Community Centers
- ▶ Landscape Maintenance – slopes, right of way, medians, golf course
- ▶ Drainage Improvements and Water Quality
- ▶ Domestic Water and Sewer Service
- ▶ Street Lights
- ▶ Street Sweeping
- ▶ Public Cemetery District
- ▶ Enhanced Fire Protection
- ▶ Enhanced Ambulance Services
- ▶ Road Maintenance and Construction

BY THE NUMBERS

- ▶ 7.78 million square feet of public landscaping
- ▶ 5.85 million square feet of public park land
- ▶ 5.2 million square feet of public golf course
- ▶ 827,640 square feet of water quality/detention basins
- ▶ 19.6 million square feet of total maintenance responsibility
- ▶ 12,115 street lights for business and residential customers
- ▶ 2,779 curb miles of street sweeping each month (1,266 tons of trash removed from the road)
- ▶ 170 annual internments within the Perris Valley Cemetery District
- ▶ Four Water and Sewer District
- ▶ Two Fire Districts
- ▶ Six Road Districts (235 miles of maintenance)



CLEAN NEIGHBORHOODS PROGRAM

Community Development Block Grant (CDBG) funds were used to conduct neighborhood enhancement activities and programs including community beautification projects and community group-coordinated cleanup events. In addition, CDBG funds were used to support programs that allow youth organizations to raise funding while they participate in the cleanup of sites impacted by illegal dumping.

CDBG assisted activities and events were successfully completed in all five supervisorial districts. The Clean Neighborhoods Program assisted 89 residential properties including 119 containers and 368 tons of waste and rubbish collected. Moreover, the Youth Force Program coordinated 23 organizations to participate in 12 illegally-dumped waste cleanup events, with a total of 84 tons of waste and eight tons of illegally dumped tires removed from public spaces.



COMMUNITY DEVELOPMENT AND HOMELESSNESS ASSISTANCE GRANTS

The Grant Unit administers U.S. Department of Housing and Urban Development (HUD) funded grant programs including the CDBG and Emergency Solutions Grant (ESG) programs.

In FY 2015/2016, EDA and its subrecipients expended approximately \$7.3 million in HUD Community Planning and Development (CPD) Funding benefiting low- and very low- income persons in Riverside County.

1ST DISTRICT	GOOD HOPE PARK IMPROVEMENTS PROJECT (UNDERWAY)	\$350,000
2ND DISTRICT	EDDIE DEE SMITH SENIOR CENTER IMPROVEMENT PROJECT- PHASE I CITY OF NORCO COMMUNITY CENTER ADA UPGRADES (UNDERWAY)	\$184,492 \$171,360
3RD DISTRICT	SAN JACINTO AREA PARK IMPROVEMENTS PROJECT (UNDERWAY) HEMET SENIOR CENTER PARKING LOT AND IMPROVEMENT PROJECT (UNDERWAY)	\$500,000 \$1,000,000
4TH DISTRICT	NORTH SHORE COMMUNITY PARK IMPROVEMENT PROJECT (UNDERWAY) COLORADO RIVER COMMUNITY CENTER IMPROVEMENT PROJECT (UNDERWAY) CITY OF LA QUINTA ADA PARKS IMPROVEMENT PROJECT (UNDERWAY)	\$200,000 \$132,500 \$317,000
5TH DISTRICT	CITY OF BANNING LIONS PARK IMPROVEMENT PROJECT MARCH FIELD AIR MUSEUM ADA PROJECT (UNDERWAY)	\$262,651 \$213,700
COUNTY	RIVERSIDE COUNTY CODE ENFORCEMENT	\$290,000

ESTIMATED CDBG AND ESG PROGRAM BENEFIT ACHIEVEMENTS

- ▶ 481,059 individuals and businesses benefitted from services funded through the CDBG and ESG programs
- ▶ 6,745 low-income individuals were provided shelter, rapid-rehousing, homeless prevention and outreach services through the ESG and CDBG programs
- ▶ 10,049 low-income individuals and seniors received meals and supportive services through the CDBG Program
- ▶ 245,807 low-income people participated in a variety of CDBG funded educational, recreational and community programs and activities
- ▶ 85,590 low-income individuals benefited from new or improved access to CDBG-funded infrastructure and public facility improvements including streets, sidewalks, parks and neighborhood, senior, handicapped and childcare center facilities

2015-2016 Total Estimated Draw Downs (Expenditures)
CDBG \$6,885,113 **ESG \$474,921**

LIBRARY SYSTEM

The Riverside County Library System (RCLS) is a network of 35 libraries, two bookmobiles and a city museum. The network provides services to over one million people across the county. During FY 2015/2016, RCLS logged 4 million visitors, 501,621 computer sessions and 2.7 million items were borrowed from the collection. We issued 47,926 library cards to new customers. We were joined by 7,726 volunteers donating 47,925 dedicated hours. New programs and services were added to broaden and expand services to library customers. Here are just a few of the highlights:

NEW LOOK!

RCLS launched a new look to the logo, website, and library card marking the most dramatic change in its visual identity since 1997. The updated look signifies its growth and transformation, and celebrates the culture of innovation built over the libraries 105 year history. The redesigned logo is featured with brighter colors that present RCLS as modern and evolving. The updated version of www.rivlib.info features a cleaner, more attractive design, more engaging user experience with enhanced search and navigation and capability to download eBooks from our online library.

RCLS RESOURCE VAN

RCLS added a new community resource van. The resource van will attend community events and will provide resources to event attendees so they can obtain library cards, information for local library branches, listings of special events and fun and exciting giveaways.

AWARDS

RCLS received a National Association of Counties (NACo) Achievement Award in June of 2016. The NACo Achievement Award recognizes innovative county government programs. RCLS received the award for "Best of Category" for our Special Needs Access at your Public Libraries (S.N.A.P.L.) Program at the Temecula Public Library. In 2012, the Temecula Public Library received a grant to develop special services for families of children with special needs in their local community. The goal was to promote literacy, provide enhanced educational opportunities, accommodating services for families to reserve books, schedule therapy appointments and to offer integrated socialization of children with special needs at the library. The library's outreach efforts in the community increased parental awareness of the library as a valuable resource and the noticeable result was increased visitation and use of the library by families with children with special needs.

TECHNOLOGY

RCLS launched five new AIO Zeus 3D Printers (one in each supervisorial district) that rotate to other libraries in the system, a new printer and copier pilot project as well as replaced public computers at six libraries.



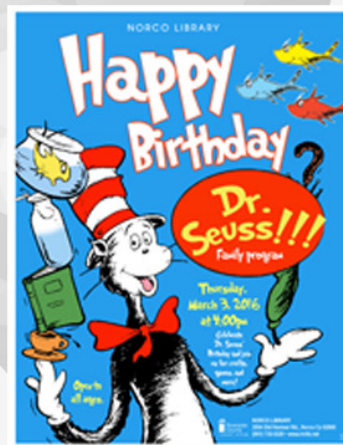
Riverside County Library System

FACILITY UPDATES

Norco Library – Plans are underway for the relocation of the Norco Library. The new location is over 10,400 square feet and is centrally located in the City of Norco. The grand opening is scheduled for the fall of 2016.

San Jacinto Library – Riverside County is proud to announce new plans to upgrade the San Jacinto Library. A 4,000 square feet city-owned facility next to San Jacinto City Hall will serve as a temporary home for the public library while planning for a new permanent library is in motion. The relocation will provide much needed space for library programming while continuing to offer amenities to the public such as free Wi-Fi, computer use and a comprehensive catalog of books to the public.

Lake Elsinore Library – In April 2016, the Lake Elsinore Library partnered with the City of Lake Elsinore and Clean Extreme, a local nonprofit organization, to enhance the facility with new exterior and interior paint and new drought tolerant landscaping, giving the library a refreshing new look.



Raising A Reader Grant - \$5,000: A grant awarded by the Hammond Family Foundation. Over 300 children participated in the red book bag rotation program.

Veterans Connect @ the Library Grant - \$4,215: The California State Library LSTA Library Outreach to Veterans Initiative grant awarded to Pacific Library Partnership in which we are a participant.

Wi-Fi Hotspot Grant - The California State Library Technology and Testing Grant was awarded to Southern California Library Cooperative. RCLS received 15 Wi-Fi hotspots to be deployed to rural and underserved library communities. We are currently utilizing this technology on the Coachella Valley Bookmobile.

PROGRAMS, SERVICES AND EVENTS

Woodcrest Library | The 4th annual Star Wars Reads Day was on Saturday, October 10th. There were costumers from across Southern California. We offered photo opportunities, storytimes, a Mandalorian Merc scavenger hunt, face painting, coloring contests, light saber lessons and one of the County's new 3D printers operating throughout the day. Star Wars Reads Day is one of our largest events of the year. Many different clubs and vendors were represented.

Norco Library | July 2015 marked the 85th year that the Norco Library has been a part of the community, which started with a few tables and volunteers in a small community room. Built in 1920, the current library building was originally a real estate office, a bank, and then the former City Hall. Norco Library now provides for the needs of 26,000 residents and also extends services to the growing and diverse neighboring communities, with over 30 programs monthly. The library has outgrown its facility and will be moving to a new and more spacious facility in the Fall of 2016.

Ronald H. Roberts Temecula Public Library | This is the third year that the Ronald H. Roberts Temecula Public Library has held a Free Comic Book Day event. The event hosted over 300 attendees who participated in a variety of activities for families to enjoy.

Cathedral City Library | The Cathedral City Library hosted a successful series of stop motion animation workshops for teens that paired the library's acquired 3D printer with clay to learn how to use the technology in a way that can be creative, constructive and technologically fun! The teens were asked throughout the program to use the clay to create character models that could be scanned and printed using the 3D printer. Some of these models were used in the creation of a short film.

Sun City Library | Sun City Library provides a wide variety and more adult programming. Programs include storytimes, reading to therapy dogs, anime club, movies, genealogy help, guided meditation, yoga, poetry workshops, adult storytelling workshop, author spotlight, photo fun, knit & crochet, scrapbooking, Scrabble, mystery book club, afternoon tea, coffee club with live music, creative circle, artist trading cards, an artist showcase and children's and teens' summer programs. The Anime Club even changed its name to Teen Lounge so it could encompass a wider variety of teen programming.

GRANTS AND SCHOLARSHIPS

Book to Action Grant - \$3,000: The Book to Action Grant is supported by the Institute of Museum and Library Services under the Library Services and Technology Act, administered in California by the State Librarian.

Building STEAM with Dia Grant - \$2,000: A mini-grant awarded by Association for Library Service to Children (a division of the American Library Association). Using STEAM (Science, Technology, Engineering, Art, and Math) concepts.

Career Online High School Scholarship - \$7,356.59: RCLS received six scholarships and four laptops to offer to qualifying candidates to enroll in the Career Online High School.

California Library Literacy Services Grant - \$24,527: Grant funding from the California State Library to serve English speaking adult learners.

California State Library LSTA Pitch-An-Idea Grant (3D Printer Grant) - \$36,500: Received 3D printers to share with other libraries within RCLS during the grant year.

EDWARD-DEAN MUSEUM

The Edward-Dean Museum was founded in 1958 in Cherry Valley by Edward Eberle and Dean Stout to showcase their collection of 16th to 19th century Asian and European furnishings and decorative arts. In 1964 ownership and operational responsibility was transferred to the County of Riverside. In 1999, the Riverside Economic Development Agency assumed the primary role for the administration and operations of the Edward-Dean Museum. With 16 acres of stunning beauty and tranquility nestled in picturesque Cherry Valley, the Edward-Dean Museum is the ideal location. The grounds offer several different options with its scenic surroundings. From the beautiful Koi Pond to the Legacy Gardens, one will be captivated by the venues natural splendor. It has been the site for numerous weddings, receptions, banquets, retirements, concerts and other special events. The museum itself has an eclectic collection of 16th to 19th century decorative arts. With three rotating exhibits throughout the year, the museum is committed to providing a culturally enriching experience to all attendees.

EVENTS

- ▶ Murder Mystery Dinner & Show
- ▶ Car Show
- ▶ Lunar Star Party
- ▶ Dickens At the Dean
- ▶ Art Show
- ▶ Retreats
- ▶ Consignment Day
- ▶ Hamlet
- ▶ Bridal Show
- ▶ Rose Pruning Clinic
- ▶ Weddings

2015/2016 EXHIBITIONS

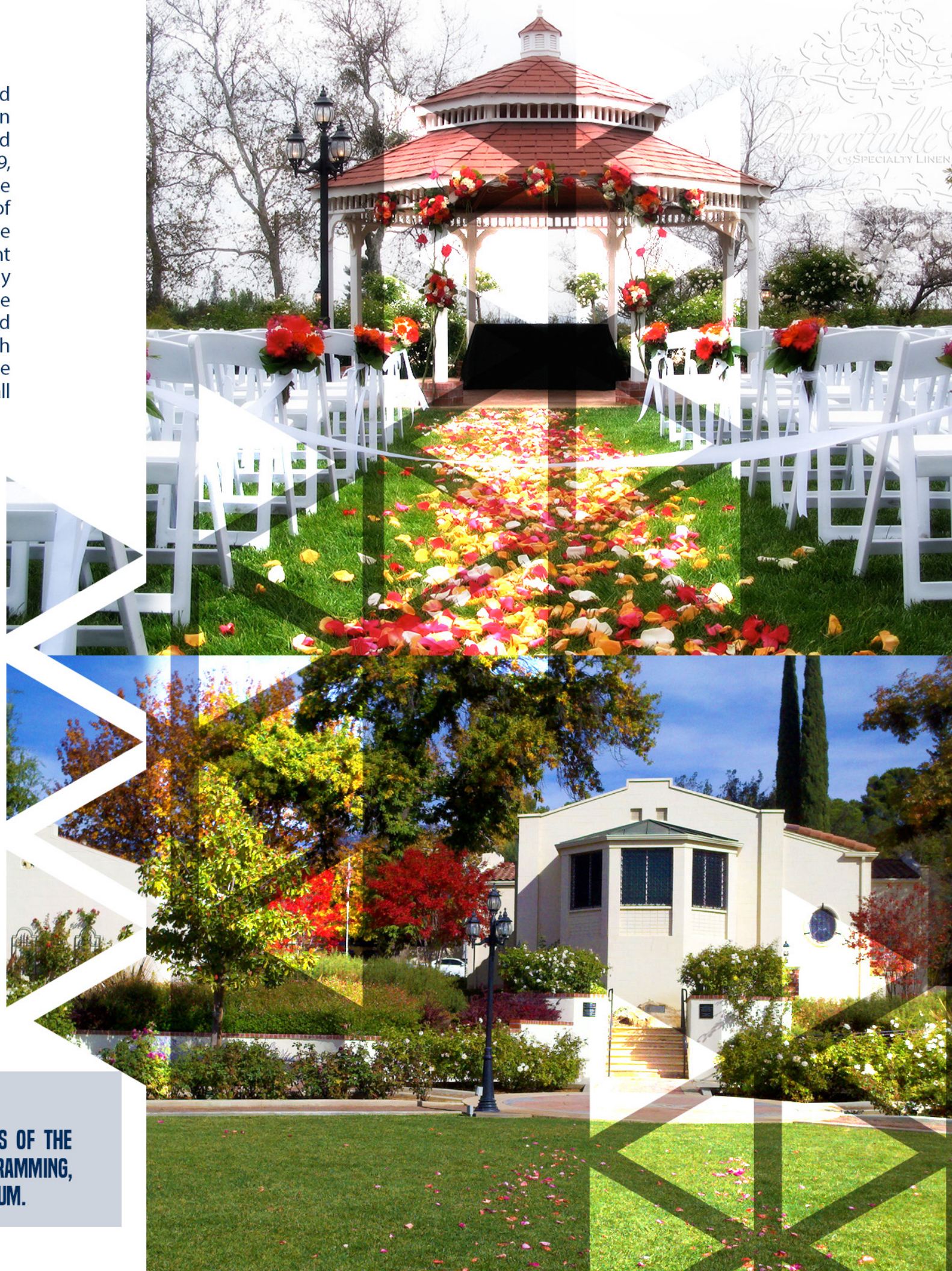
- ▶ Something Borrowed: 'Tracing traditions of wedding customs & celebrations'
- ▶ Mechanical: 'Explores parallels between the Victorian era and ours, using art as a connector'
- ▶ Water & Earth: 'Image & verse of the Tang Dynasty'

PROGRAMMING

- ▶ School Tours
- ▶ Music in the Afternoon
- ▶ Costume Workshop
- ▶ Drawing Hour
- ▶ Crafting Saturdays

923 STUDENTS

CAME THROUGH THE MUSEUM ON FREE FIELD TRIPS PROVIDED BY THE 'FRIENDS OF THE MUSEUM'. THIS NON-PROFIT ENTITY SUPPORTS THE MUSEUM'S EDUCATIONAL PROGRAMMING, WHICH ALLOWS SCHOOLS THE OPPORTUNITY TO HAVE FREE FIELD TRIPS TO THE MUSEUM.



Unforgettable
SPECIALTY LINEN

ADMINISTRATIVE SERVICES

ACCOUNTING & FINANCE

- ▶ Managed a total budget of \$465.8 million
- ▶ Electronic distribution of monthly financial and management reports on SharePoint, thus reducing paper waste
- ▶ Developed and deployed an Invoice module and transitioned the invoice approval process from SharePoint to Dynamics CRM
- ▶ 12,345 vendor invoices recorded, along with bill images, into Dynamics since September 2015
- ▶ Developed an Invoice Approval report to expedite the vouchering process
- ▶ Successfully transitioned Waste Management, AT&T and Verizon to automate invoice receiving and payment issuance
- ▶ Interfaced 19,609 vendor invoices into the PeopleSoft Financial system, saving hundreds of hours and thousands of dollars in staff time by eliminating a manual entry
- ▶ Modifications to accommodate change orders, PR status values of 'PO Issued' introduced, moving forward the PR 'Closing' process will now be in alignment with PeopleSoft PO Finalization
- ▶ Our AP Team processed 45,093 vouchers

PURCHASING AND SUPPLY SERVICES DIVISION

The Purchasing and Supply Services provides purchasing activities for EDA. The staff supports Project Managers, Facilities Management, CSAs, Workforce Development, Cultural Services and Aviation. They assist staff with purchasing policy requirements and issuing quality agreements.

- ▶ Processed 5,603 purchase orders valued over \$400 with total commitments of \$23.9 million
- ▶ Processed 6,596 purchase orders under \$400 with total commitments of over \$1 million
- ▶ Purchasing system and process improvements to support Customers
- ▶ Purchasing training to Project Management and Maintenance staff
- ▶ Delivered to approximately 79 locations on an on-going basis countywide
- ▶ Maintained inventories in the warehouse for janitorial, maintenance and administration
- ▶ On-going recycling program for scrap metals and for universal waste, hazardous waste and furniture
- ▶ Worked with Staples and the County Purchasing Department to establish a more streamlined approach in the delivery and purchase of office supplies



ADMINISTRATIVE SERVICES – HUMAN RESOURCES

- ▶ EDA-HR managed 124 recruitments in addition to hiring 266 temporary employees, 60 new hires and 56 promotions. Retirements accounted for 33% of the 82 separations processed
- ▶ Collaborated with the Educational Support Program to continue to grow our EDA Internship/Mentoring program. Various EDA divisions provided hands on training opportunities to 26 student interns from local and nationwide universities in various fields of study
- ▶ Workplace Injury claims decreased by 11% as of April 1, 2016, with a reduction of approximately \$1.5 million. In compliance with FMLA/CFRA/PDL and county leave policies, EDA-HR managed 162 leave requests and accommodated 45 employees
- ▶ Over 320 travel/training requests were processed, a decrease of 22.3% over last year in an effort to decrease travel costs
- ▶ Increased efficiency in reporting and processing of time sensitive HR requests by utilizing online tools such as Microsoft SharePoint to route HR related forms approval and created an HR Library of management reports
- ▶ Achieved 100% in the Annual Commuter Survey and Statement of Economic Interest-Form 700

RIVERSIDE COUNTY FAIR & NATIONAL DATE FESTIVAL

The Riverside County Fair & National Date Festival is an annual 10-day event that features some of the nation's finest live entertainment including headliner concerts, monster trucks, freestyle motocross, camel & ostrich races, nightly musical pageant, carnival rides and attractions. The Fair provides an opportunity for Riverside County residents and businesses to showcase their talents, goods and services to the community. The Fair's strong economic impact, estimated at \$36 million, is a welcome benefit to the Coachella Valley every year.

HIGHLIGHTS

- ▶ Earned gross admissions revenue of over \$1.1 million
- ▶ Earned net carnival revenue of \$869,930
- ▶ Gross concession sales of over \$2.4 million up 14% over 2015
- ▶ Attendance has averaged almost 300,000 the past five years
- ▶ Sponsorship team boosted cash sponsorships by over 20% over last year
- ▶ Featured nationally recognized headline performers at the Fantasy Springs Resort Concert Pavilion, included Ezequiel Pena, Morris Day & The Time, Sheila E., Trace Adkins and KC & The Sunshine Band
- ▶ Scholarship money awarded to Riverside County students totaled almost \$30,000
- ▶ County of Riverside Department of Animal Services adopted out 257 dogs during the 10-day Fair run

Year-round, the Riverside County Fairgrounds is also home to over 44 interim events annually, from quiceañeras and car shows to concerts and dances. The Family Motor Coach Association Rally is the second largest event held on the grounds in January with over 860 motor coaches and approximately 3,080 people in attendance. Approximate interim events attendance for the fiscal year was over 26,000. With over 120 acres of land, a grandstand arena and eight buildings on the grounds, the fairgrounds are a perfect venue for just about any event.





2016

GROSS CONCESSIONS SALES: \$2,495,445
NET CARNIVAL REVENUE: \$869,930
CASH SPONSORSHIP: \$357,500

2015

GROSS CONCESSIONS SALES: \$2,188,873
NET CARNIVAL REVENUE: \$868,007
CASH SPONSORSHIP: \$297,500

2014

GROSS CONCESSIONS SALES: \$2,077,057
NET CARNIVAL REVENUE: \$793,003
CASH SPONSORSHIP: \$290,000

2013

GROSS CONCESSIONS SALES: \$1,892,719
NET CARNIVAL REVENUE: \$749,929
CASH SPONSORSHIP: \$229,879

2012

GROSS CONCESSIONS SALES: \$1,957,487
NET CARNIVAL REVENUE: \$805,488
CASH SPONSORSHIP: \$210,848

2011

GROSS CONCESSIONS SALES: \$1,705,648
NET CARNIVAL REVENUE: \$740,249
CASH SPONSORSHIP: \$227,668

RIVERSIDE COUNTY FILM COMMISSION

PROVIDING COMPREHENSIVE KNOWLEDGE ABOUT LOCATIONS, SERVICES AND CREW IN RIVERSIDE COUNTY AND OFFERING A STREAMLINED PERMIT PROCESS TO FILM MAKERS FROM AROUND THE GLOBE.

The Riverside County Film Commission (RCFC) is the regional film partner to the State's California Film Commission and is the gateway to filming that takes place in 29 cities and thousands of square miles of unincorporated areas and roads in Riverside County.

Promoting the County's incentives and offerings to "The Industry" is one way film makers are discovering Riverside County.

RCFC has hosted "A" list celebrities at Riverside County Special Events and is becoming known as "East Hollywood" in the entertainment industry.

INDUSTRY
PARTNERS



JOE MANTEGNA
CRIMINAL MINDS

JANIE HENDRIX
EXPERIENCE HENDRIX

PHIL KEOGHAN
THE AMAZING RACE

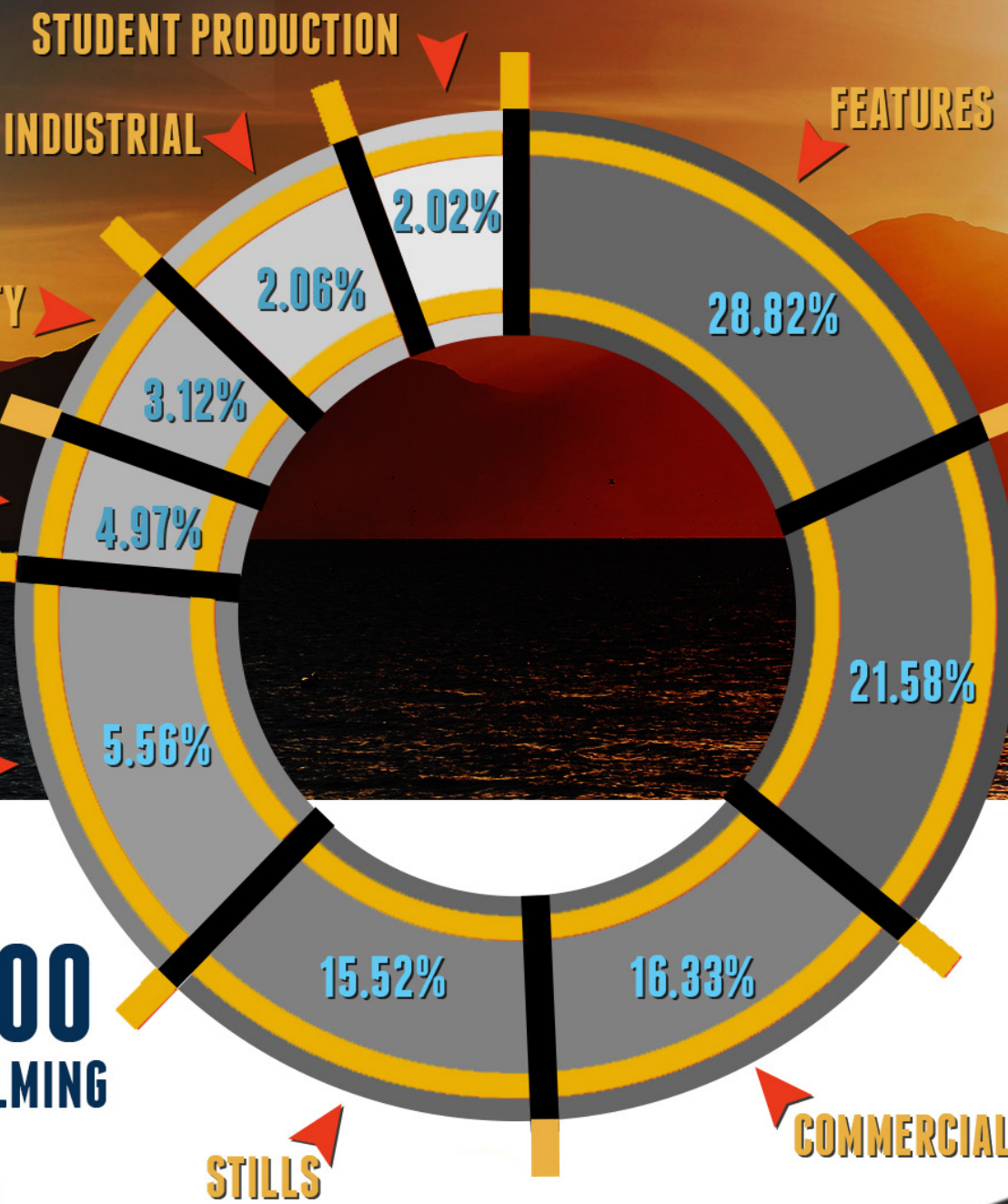
MIKE LOVE
THE BEACH BOYS

STEVE GARVEY
LA DODGERS



\$21,127,500.00
ECONOMIC IMPACT FROM FILMING
TO RIVERSIDE COUNTY IN
2015

RCFC works with global partners, producers, directors and location professionals from around the world as they submit films and partake in local and internationally acclaimed Film Festivals throughout the County of Riverside. Sharing information about our incentives and unique locations for film shoots are just a few ways that RCFC is attracting the film business.



401
 Total film permits issued countywide for 2015

In the Riverside County Film Commission's first full year—Film Permits are on the rise.

OFFICE LOCATIONS

ACCOUNTING & FINANCE

3133 Mission Inn Avenue
Riverside, CA 92501
(951) 955-8916

ADMINISTRATION

3403 10th Street, Suite 300
Riverside, CA 92501
(951) 955-8916

AVIATION

3403 10th Street, Suite 630
Riverside, CA 92501
(951) 955-8916

COMMUNITY SERVICES DIVISION

MARKETING

OFFICE OF FOREIGN TRADE

PROJECT MANAGEMENT OFFICE

REAL ESTATE

RIVERSIDE COUNTY FILM

COMMISSION

3403 10th Street, Suite 400
Riverside, CA 92501
(951) 955-8916

Economic Development Business Intelligence Business Solutions

1325 Spruce Street, Suite 400
Riverside, CA 92507
(951) 955-8916

EAST COUNTY OPERATIONS

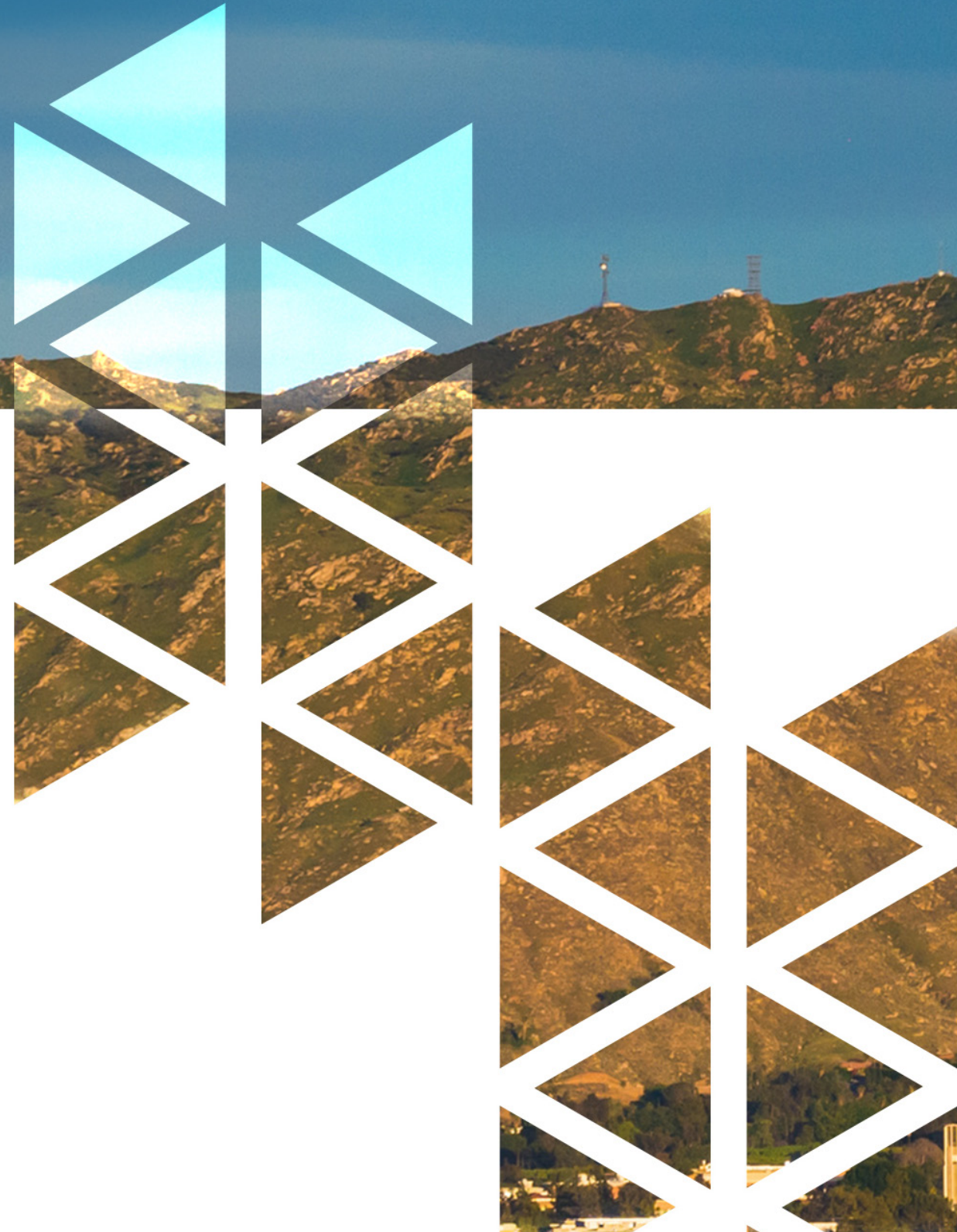
44-199 Monroe Street
Indio, CA 92201
(760) 836-2500

EDWARD-DEAN MUSEUM & GARDENS

9401 Oak Glen Road
Cherry Valley, CA 92223
(951) 845-2626

FACILITIES MANAGEMENT & PURCHASING

2991 Franklin Avenue
Riverside, CA 92507
(951) 955-8916





HOUSING AUTHORITY/HOUSING

5555 Arlington Avenue
Riverside, CA 92504
(951) 351-0700

44-199 Monroe Street, Suite B
Indio, CA 92201
(760) 836-2828
(951) 652-0422

**JACQUELINE COCHRAN REGIONAL
AIRPORT**

56-850 Higgins Drive
Thermal, CA 92201
(951) 652-0422

**RIVERSIDE COUNTY FAIR & NATIONAL
DATE FESTIVAL**

82-503 Highway 111
Indio, CA 92201
(760) 863-8147

**WORKFORCE DEVELOPMENT
CENTERS**

Hemet
749 North State Street
Hemet, CA 92543
(951) 791-3500

Indio
44-199 Monroe Street
Indio, CA 92201
(760) 836-2500

Riverside
1325 Spruce Street, Suite 110
Riverside, CA 92507
(951) 955-3100

Southwest
30135 Technology Drive
Murrieta, CA 92563
(951) 304-5900

RIVERSIDE COUNTY AIRPORTS

Blythe Airport
440 South Main Street
Blythe, CA 92225
(951) 955-9722

Chiriaco Summit Airport
One Chiriaco Road
Chiriaco Summit, CA 92201
(951) 955-9722

French Valley Airport
37552 Winchester Road
Murrieta, CA 92563
(951) 600-7297

Hemet-Ryan Airport
4710 West Stetson Avenue
Hemet, CA 92545
(951) 955-9722



