



DISTRIBUTION CONNECTORS



SECTION D G

TOOLS

Fargo "Speed" Hand Wrenches

Cable Reel Grounding Systems

Anderson® Versa-Crimp® Tools & Accessories

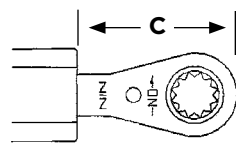
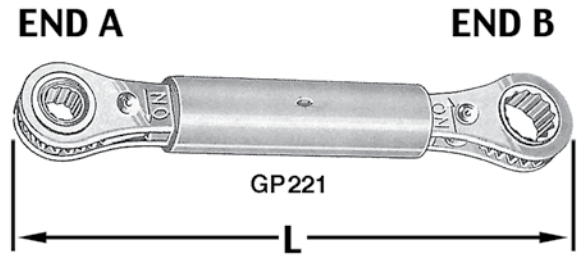
DISTRIBUTION TOOLS SERIES GP FARGO CONNECTOR WRENCHES

| |
|--------------------|
| TOOLS |
| GP WRENCHES |

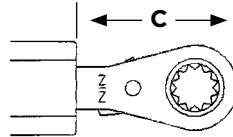
- Design optimized for lineman use - handle separates both ends. (GP201204 & GP216 are 1 piece style - see note)
- Specially constructed for proper and fast installation of mechanical connectors in utility distribution applications

Sturdy polypropylene handle provides protection from incidental end-to-end or energized line contact (all models except as noted).

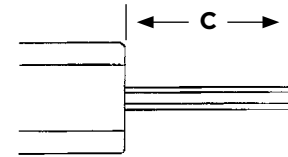
Nine available wrench heads.



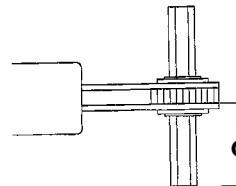
**Figure 1
Ratchet**



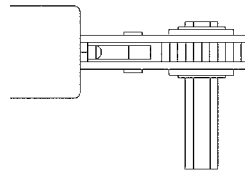
**Figure 2
Rev. Ratchet**



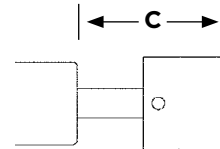
**Figure 3
Allen Bar**



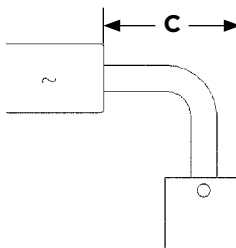
**Figure 4
Allen Ratchet**



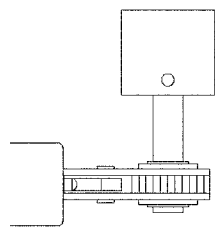
**Figure 5
Rev. Allen
Ratchet**



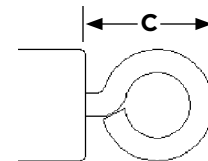
**Figure 6
Penta Socket**



**Figure 7
90° Penta Socket**



**Figure 8
90° Penta Ratchet**



**Figure 9
Eye Loop**

Fargo Available Wrench Combinations:

| CATALOG NUMBER | "A" END DESCRIPTION | FIGURE | C INCHES (MM) | "B" END DESCRIPTION | FIGURE | C INCHES (MM) | L APPROX. INCHES (MM) | WT. LB. (KG) |
|----------------|---------------------|--------|---------------|---------------------|--------|---------------|-----------------------|--------------|
| GP201* | 3/8" Ratchet | 1 | one piece | 9/16" Ratchet | 1 | one piece | 6.75 (171.79) | 0.75 (0.34) |
| GP203* | 9/16" Ratchet | 1 | one piece | 3/4" Ratchet | 1 | one piece | 6.25 (159.06) | 0.75 (0.34) |
| GP2031* | 1/2" Ratchet | 1 | one piece | 9/16" Ratchet | 1 | one piece | 6.75 (171.79) | 0.75 (0.34) |
| GP204* | 3/4" Ratchet | 1 | one piece | 7/8" Ratchet | 1 | one piece | 9.25(235.41) | 0.75 (0.34) |
| GP209 | 3/8" Allen Ratchet | 4 | 1.21 (30.79) | Eye Loop | 9 | 1.00 (25.45) | 7.50 (190.88) | 0.75 (0.34) |
| GP2090P | 3/8" Allen Ratchet | 4 | 1.21 (30.79) | Penta Socket | 6 | 2.00 (50.90) | 8.75 (222.69) | 1.00 (0.45) |
| GP2090P4 | 3/8" Allen Ratchet | 4 | 1.71 (43.52) | Penta Socket | 6 | 2.00 (50.90) | 8.75 (222.69) | 1.00 (0.45) |
| GP2090P90 | 3/8" Allen Ratchet | 4 | 1.21 (30.79) | 90° Penta Socket | 7 | 2.50 (63.63) | 9.25(235.41) | 1.00 (0.45) |
| GP2091P | Penta Socket | 6 | 1.91 (48.61) | Eye Loop | 9 | 1.00 (25.45) | 7.50 (190.88) | 0.75 (0.34) |
| GP2091P90 | 90 Penta Socket | 7 | 2.37 (60.32) | Eye Loop | 9 | 1.00 (25.45) | 8.00 (203.60) | 0.75 (0.34) |
| GP2092M | 3/8" Allen Ratchet | 4 | 1.21 (30.79) | 3/8" Allen Bar | 3 | 1.25 (31.81) | 8.00 (203.60) | 0.75 (0.34) |
| GP2093 | 5/16" Allen Ratchet | 4 | 1.46 (37.16) | Eye Loop | 9 | 1.00 (25.45) | 7.75 (197.24) | 0.75 (0.34) |
| GP2093P | 5/16" Allen Ratchet | 4 | 1.46 (37.16) | Penta Socket | 6 | 2.00 (50.90) | 9.00 (229.05) | 1.00 (0.45) |
| GP2093P90 | 5/16" Allen Ratchet | 4 | 1.46 (37.16) | 90° Penta Socket | 7 | 2.50 (63.63) | 9.25(235.41) | 1.00 (0.45) |
| GP209375P90 | 5/16" Allen Ratchet | 4 | 0.75 (19.09) | 90° Penta Socket | 7 | 2.50 (63.63) | 9.25(235.41) | 1.00 (0.45) |

* These wrenches do not have polypropylene handle.



DISTRIBUTION TOOLS SERIES GP FARGO CONNECTOR WRENCHES (Continued)

| |
|--------------------|
| TOOLS |
| GP WRENCHES |

Fargo Available Wrench Combinations:

| CATALOG NUMBER | “A” END DESCRIPTION | FIGURE | C INCHES (MM) | “B” END DESCRIPTION | FIGURE | C INCHES (MM) | L APPROX. INCHES (MM) | WT. LB. (KG) |
|----------------|--------------------------|--------|---------------|--------------------------|--------|---------------|-----------------------|--------------|
| GP210 | 3/16" Allen Bar | 3 | 1.25 (31.81) | Eye Loop | 9 | 1.00 (25.45) | 6.75 (171.79) | 0.50 (0.23) |
| GP2101 | 1/4" Allen Bar | 3 | 1.88 (47.85) | Eye Loop | 9 | 1.00 (25.45) | 7.38 (187.82) | 0.50 (0.23) |
| GP211 | 3/8" Allen Bar | 3 | 1.25 (31.81) | Eye Loop | 9 | 1.00 (25.45) | 6.75 (171.79) | 0.50 (0.23) |
| GP212 | 5/16" Allen Bar | 3 | 1.25 (31.81) | Eye Loop | 9 | 1.00 (25.45) | 6.75 (171.79) | 0.50 (0.23) |
| GP216* | 11/16" Ratchet | 1 | one piece | 15/16" Ratchet | 1 | one piece | 9.25(235.41) | 0.75 (0.34) |
| GP221 | 3/8" Ratchet | 1 | 2.25 (57.26) | 9/16" Ratchet | 1 | 2.25 (57.26) | 9.00 (229.05) | 0.75 (0.34) |
| GP2210 | 3/8" Ratchet | 1 | 2.25 (57.26) | 7/16" Ratchet | 1 | 2.25 (57.26) | 9.00 (229.05) | 0.75 (0.34) |
| GP2212 | 1/2" Ratchet | 1 | 2.25 (57.26) | 9/16" Ratchet | 1 | 2.25 (57.26) | 9.00 (229.05) | 0.75 (0.34) |
| GP2213 | 5/16" Ratchet | 1 | 2.00 (50.90) | 3/8" Ratchet | 1 | 2.00 (50.90) | 8.50 (216.33) | 0.75 (0.34) |
| GP2213AR | 3/8" Allen Ratchet | 4 | 1.21 (30.79) | 5/16" Allen Ratchet | 4 | 1.21 (30.79) | 9.00 (229.05) | 0.75 (0.34) |
| GP2214 | 3/8" Ratchet | 1 | 2.00 (50.90) | 1/2" Ratchet | 1 | 2.00 (50.90) | 8.50 (216.33) | 0.75 (0.34) |
| GP2215P | 3/8" Reversible Ratchet | 2 | 2.25 (57.26) | Penta Socket | 6 | 2.00 (50.90) | 8.75 (222.69) | 1.00 (0.45) |
| GP223 | 9/16" Ratchet | 1 | 2.25 (57.26) | 3/4" Ratchet | 1 | 2.25 (57.26) | 9.00 (229.05) | 0.75 (0.34) |
| GP2231 | 9/16" Ratchet | 1 | 2.25 (57.26) | 11/16" Ratchet | 1 | 2.25 (57.26) | 9.00 (229.05) | 0.75 (0.34) |
| GP2232 | 3/4" Ratchet | 1 | 2.25 (57.26) | 11/16" Ratchet | 1 | 2.25 (57.26) | 9.00 (229.05) | 0.75 (0.34) |
| GP2233 | 9/16" Ratchet | 1 | 2.25 (57.26) | 5/8" Ratchet | 1 | 2.25 (57.26) | 9.00 (229.05) | 0.75 (0.34) |
| GP2234 | 1/2" Ratchet | 1 | 2.25 (57.26) | 5/8" Ratchet | 1 | 2.25 (57.26) | 9.00 (229.05) | 0.75 (0.34) |
| GP2235 | 5/8" Ratchet | 1 | 2.25 (57.26) | 11/16" Ratchet | 1 | 2.25 (57.26) | 9.00 (229.05) | 0.75 (0.34) |
| GP2236 | 5/8" Ratchet | 1 | 2.25 (57.26) | 13/16" Ratchet | 1 | 2.75 (69.99) | 9.50 (241.78) | 0.75 (0.34) |
| GP2237 | 5/8" Ratchet | 1 | 2.25 (57.26) | 3/4" Ratchet | 1 | 2.25 (57.26) | 9.00 (229.05) | 0.75 (0.34) |
| GP2238 | 3/4" Ratchet | 1 | 2.25 (57.26) | 13/16" Ratchet | 1 | 2.75 (69.99) | 9.50 (241.78) | 0.75 (0.34) |
| GP224 | 3/4" Ratchet | 1 | 2.25 (57.26) | 7/8" Ratchet | 1 | 2.75 (69.99) | 9.50 (241.78) | 1.00 (0.45) |
| GP2240 | 13/16" Ratchet | 1 | 2.75 (69.99) | 7/8" Ratchet | 1 | 2.75 (69.99) | 10.00 (254.50) | 1.00 (0.45) |
| GP2241P90 | 13/16" Ratchet | 1 | 2.75 (69.99) | 90° Penta Socket | 7 | 2.50 (63.63) | 9.75 (248.14) | 1.00 (0.45) |
| GP2242 | 11/16" Ratchet | 1 | 2.25 (57.26) | 15/16" Ratchet | 1 | 2.75 (69.99) | 9.50 (241.78) | 1.00 (0.45) |
| GP2243 | 13/16" Ratchet | 1 | 2.75 (69.99) | 15/16" Ratchet | 1 | 2.75 (69.99) | 10.00 (254.50) | 1.00 (0.45) |
| GP2245 | 7/8" Ratchet | 1 | 2.75 (69.99) | 15/16" Ratchet | 1 | 2.75 (69.99) | 10.00 (254.50) | 1.00 (0.45) |
| GP239 | 5/16" Rev. Allen Ratchet | 5 | 1.00 (25.45) | 5/16" Rev. Allen Ratchet | 5 | 1.00 (25.45) | 9.00 (229.05) | 1.00 (0.45) |
| GP240 | 5/16" Rev. Allen Ratchet | 5 | 1.50 (38.18) | 3/8" Rev. Allen Ratchet | 5 | 1.38 (35.12) | 9.00 (229.05) | 1.00 (0.45) |
| GP240P1 | 3/8" Rev. Allen Ratchet | 5 | 1.00 (25.45) | Penta Socket | 6 | 2.00 (50.90) | 8.75 (222.69) | 1.00 (0.45) |
| GP241P | 5/16" Rev. Allen Ratchet | 5 | 1.50 (38.18) | Penta Socket | 6 | 2.00 (50.90) | 8.75 (222.69) | 1.00 (0.45) |
| GP241P1 | 5/16" Rev. Allen Ratchet | 5 | 2.00 (50.90) | Penta Socket | 6 | 2.00 (50.90) | 8.75 (222.69) | 1.00 (0.45) |
| GP241P2 | 5/16" Rev. Allen Ratchet | 5 | 1.00 (25.45) | Penta Socket | 6 | 2.00 (50.90) | 8.75 (222.69) | 1.00 (0.45) |
| GP241P3 | 5/16" Rev. Allen Ratchet | 5 | 2.50 (63.63) | Penta Socket | 6 | 2.00 (50.90) | 8.75 (222.69) | 1.00 (0.45) |
| GP241P90 | 5/16" Rev. Allen Ratchet | 5 | 1.50 (38.18) | 90° Penta Socket | 7 | 2.50 (63.63) | 9.25 (235.41) | 1.00 (0.45) |
| GP241PS58 | 5/16" Rev. Allen Ratchet | 5 | 0.63 (15.91) | Penta Socket | 6 | 2.00 (50.90) | 8.75 (222.69) | 1.00 (0.45) |
| GP241S | 5/16" Rev. Allen Ratchet | 5 | 1.50 (38.18) | Eye Loop | 9 | 1.00 (25.45) | 7.75 (197.24) | 0.75 (0.34) |
| GP241S2 | 5/16" Rev. Allen Ratchet | 5 | 1.00 (25.45) | Eye Loop | 9 | 1.00 (25.45) | 9.00 (229.00) | 0.75 (0.34) |
| GP241S3GP | 3/8" Rev. Allen Ratchet | 5 | 1.00 (25.45) | Eye Loop | 9 | 1.00 (25.45) | 9.00 (229.00) | 0.75 (0.34) |
| GP241S58 | 5/16" Rev. Allen Ratchet | 5 | 0.63 (15.91) | Eye Loop | 9 | 1.00 (25.45) | 7.75 (197.24) | 0.75 (0.34) |
| GP242P | 5/16" Rev. Allen Ratchet | 5 | 1.75 (44.54) | 90° Penta Rev. Ratchet | 8 | 2.75 (69.99) | 9.00 (229.00) | 1.00 (0.45) |
| GP242P1 | 3/8" Rev. Allen Ratchet | 5 | 1.38 (35.12) | 90° Penta Rev. Ratchet | 8 | 2.75 (69.99) | 9.00 (229.00) | 1.00 (0.45) |
| GP242P2 | 5/16" Rev. Allen Ratchet | 5 | 2.00 (50.90) | 90° Penta Rev. Ratchet | 8 | 2.75 (69.99) | 9.00 (229.00) | 1.00 (0.45) |
| GP243P | 5/16" Rev. Allen Ratchet | 5 | 1.00 (25.45) | 90° Penta Socket | 7 | 2.50 (63.63) | 9.25 (235.41) | 1.00 (0.45) |

DG
2



“THE NUT RUNNER” — LINEMAN’S RATCHET WRENCH CAT. NO’S. GP3458 AND GP345812 FARGO DISTRIBUTION TOOLS

| |
|------------------------|
| TOOLS |
| GP3458 “Nut Runner” |

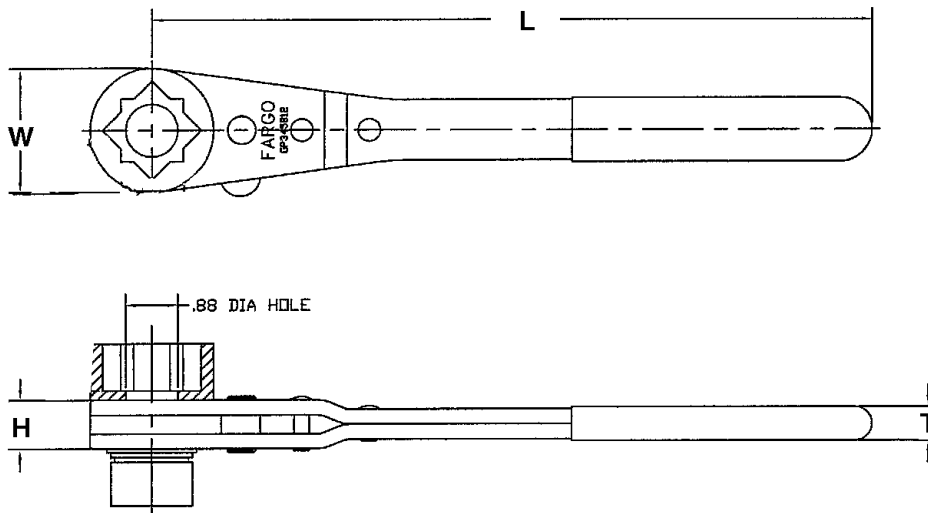
Features

- Unique bolt thru socket
- 2 in 1 combination square socket (GP3458)
- 3 in 1 combination square socket (GP345812 & GP345812C)
- Reversible ratchet
- Heavy duty construction

Benefits

- Eliminate the need to use slower open-end wrenches.
- Fits nuts for both 5/8” & 3/4” machine bolts, and eliminates the need for multiple wrenches, or 1/2”, 5/8” & 3/4” bolts.
- Quick and easy to use. No more inconvenient re-positioning.
- Ensures a dependable and long field life.

The Fargo “Nut Runner” Lineman’s Ratchet Wrench provides a safe and easier way to tighten down long machine bolts. Developed to install equipment mounting bolts on utility poles, this tool makes slower, non-mechanical openend wrenches antiquated.



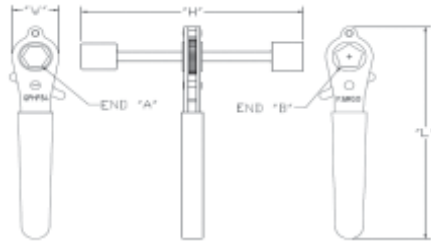
| CATALOG NUMBER | DIMENSIONS INCHES (MM) | | | | WT. LB. (KG) |
|----------------|------------------------|----------------|---------------|---------------|----------------|
| | L | W | H | T | |
| GP3458 | 12.00 (304.8) | 2.06 (52.3) | .81 (20.6) | .56 (14.2) | 2.45 (1.11) |
| GP345812 | 12.00 (304.8) | 2.06 (52.3) | .81 (20.6) | .56 (14.2) | 2.53 (1.15) |
| GP345812C | 9.36 (237.7) | 2.06 (52.3) | .78 (19.8) | 1.0 (25.4) | 1.53 (0.69) |

DG
3



DISTRIBUTION TOOLS FARGO CONNECTOR WRENCHES PAD MOUNT TRANSFORMER WRENCH

| |
|-------|
| TOOLS |
| GPHP |



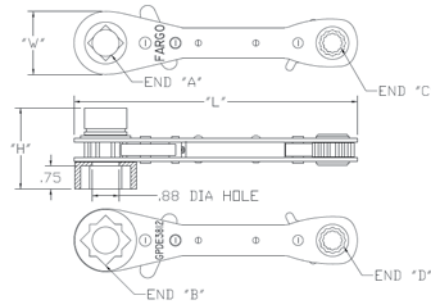
- For use with pad mount transformers.
- Penta socket to open the transformer and the hex wrench for miscellaneous hardware inside.
- The head is pinned to prevent spreading of the side plates.
- Reversible ratcheting design.
- Heavy duty construction.
- Torque tested to 90 lb-ft.
- Comfortable handle shape.

GPHP

| CATALOG NUMBER | END DESCRIPTION | | PHYSICAL WRENCH DIM, IN (MM) | | | WT. LB. (KG) |
|----------------|-----------------|----------------------------|------------------------------|-----------|------------|--------------|
| | A | B | L | W | H | |
| GPHP34 | 3/4" Hex Socket | 7/8" Security Penta Socket | 8.13 (206) | 1.56 (40) | 7.38 (187) | 1.8 (0.8) |

DISTRIBUTION TOOLS FARGO CONNECTOR WRENCHES PAD MOUNT TRANSFORMER WRENCH

| |
|-------|
| TOOLS |
| GPDE |



- Multi-Task wrench in popular sizes
- 3 in 1 combination square socket (Nut Runner). Unique bolt-through square socket fits nuts for 3/4", 5/8" and 1/2" machine bolts.
- 2 in 1 combination hex socket on opposite end. Hex socket for nuts on 3/8" or 1/2" bolts.
- Available in two lengths: standard and long.
- GPDE3812L is longer which allows more leverage for problematic hardware servicing.

GPDE

| CATALOG NUMBER | END DESCRIPTION | | | | PHYSICAL WRENCH DIM, IN (MM) | | | WT. LB. (KG) |
|----------------|------------------|-------------------------|-------------------------|------------------------|------------------------------|-----------|-----------|--------------|
| | A | B | C | D | L | W | H | |
| GPDE3812 | 1/2" Square Nuts | 5/8" & 3/4" Square Nuts | 9/16", 12 pt Hex Socket | 3/4", 12 pt Hex Socket | 9.25 (235) | 2.06 (52) | 2.65 (67) | 2.4 (1.1) |
| GPDE3812L | 1/2" Square Nuts | 5/8" & 3/4" Square Nuts | 9/16", 12 pt Hex Socket | 3/4", 12 pt Hex Socket | 12.25 (311) | 2.06 (52) | 2.65 (67) | 2.8 (1.3) |

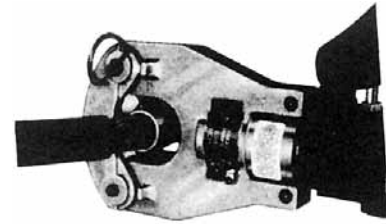
DG
4

ANDERSON® VERSA-CRIMP® COMPRESSION SYSTEM

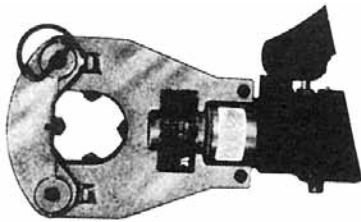
Anderson compression tools embody the only real innovation in compression tools, since 1961. Prior to the VERSACRIMP® tools all compression systems were die-type which required the matching of dies, connectors and conductors for suitable connections.

Instead of die-type “distance travel” systems, the VERSACRIMP pressure-response system utilizes four self-contained crimping nibs. These nibs advance from:

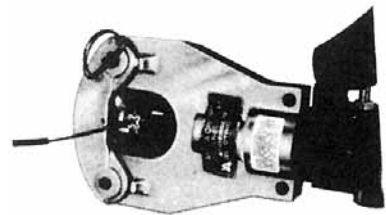
in a continuous action, until the combined pressure of conductor and connector mass interacts upon a pre-set hydraulic valve.



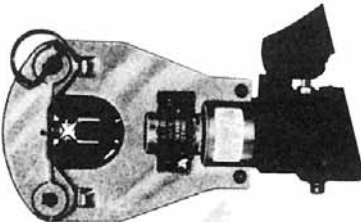
from this large
to



the largest opening
to



this small



the smallest opening,

utmost in versatility. All tools are covered by a two- or three-year limited warranty and we maintain an experienced staff to provide maintenance and repair with minimum inconvenience. Warranty details and maintenance requirements are supplied with each tool.

This difference in design principle, means only VERSA-CRIMP tools can handle the complete job of the entire tool range without changing compression die-sets.

The VERSA-CRIMP VC6FTSP tool, for example, performs in a very wide range of #10AL Str. through 750 MCM Al, with *no* change of die-sets or tool alterations.

VERSA-CRIMP BENEFITS:

- One tool covers an entire range; simplified tool programs.
- No dies or die sets required; less tooling cost.
- ANSI C119.4 highest strength crimps, for Versa-Crimp and standard lugs, splices and terminals.

All tools have heads which rotate 360° for ease of application in any position. The pump block and handles are neoprene covered to help protect tool from accidental “brush” contact with energized conductors covered crimp heads are also available.

Extensive research and testing have developed a full complement of accessories which assure you of a dependable compatible system to satisfy your requirements. Miniaturization and the use of light weight alloy materials wherever practical, facilitate the



COMPRESSION CONNECTORS ANDERSON® VERSA-CRIMP® RANGE-TAKING SYSTEM

Along with a full line of range taking tools, Anderson manufactures a comprehensive line of range taking and extended range compression connectors for both utility distribution systems and construction/industrial requirements. All of these connectors are rigidly tested to meet the respective requirements of NEMA and Underwriter's Laboratory, as well as ANSI C119.4 standards. Our exhaustive testing assures you a reliable product, and the best quality.

The unique action of VERSA-CRIMP® compression tools, and our range-taking system design of connectors, makes possible the application of a variety of conductor sizes within one common connector. VERSA-CRIMP is the only compression system which can provide comparable range-taking conveniences in compression connections previously limited to only mechanical set-screw lugs or bolted connections.



This VCSE44 aluminum sleeve typifies the VERSA-CRIMP system's range-taking capabilities. It has a conductor range of #10 solid (crimped on right) through 1/0 STR. AAC, ACSR or Cu. (at left).

Not only do we manufacture connectors for our unique VERSA-CRIMP tool, but we also manufacture connectors for conventional die type tooling as well. Our unique range-taking system offers versatility unmatched in the industry. This versatile system offers users flexibility in application and inventory, which translates into real-world benefits..

VERSAtile™ compression connectors have also been tested and are in compliance with NEMA or U.L. and ANSI C119.4 standards for compression connections when used with most Anderson, Blackburn, Burndy, Kearney and Thomas & Betts die or indent type tools (of course VERSA-CRIMP tools also) as listed.

Our continuous research and development assure you of a system as modern and flexible tomorrow as it is today.

DG
6



ANDERSON® VERSA-CRIMP® BATTERY POWERED ACSR CUTTING TOOL TYPE BP18CC129ACSR

| |
|----------------------------|
| TOOL |
| BP18C- C129ACSR |



For Use On:

- Copper Cable- up to 1.29 "(32.7 mm)
- Aluminum cable- up to 1.29"(32.7 mm)
- ACSR - up to 1113 ACSR
- Standard Guy Wire-up to 1/2 (12.7 mm)
- EHS Guy Wire-up to 3/8" (9.5 mm)
- Ground Rod-up to 5/8"(15.8 mm)
- Rebar- up to 1/2"(12.7 mm)
- Soft Steel Bolts- up to 5/8"(15.8 mm)
- 18 volt Lithium-Ion rechargeable batteries
- Latch type head rotates 180 degrees
- Comfortable overmolded handle balanced for one hand operation

Includes:

- 18 volt battery powered cable cutter tool
- Two 18-volt Lithium-Ion batteries
- AC charger - 30 minutes recharge
- High impact plastic case - ergonomic carrying design with storage.
- Lanyard strap
- Instruction manual and warranty card
- 5-year limited warranty on tool (excludes blades) with 1-year on batteries and charger

ACCESSORIES

Battery: Cat.# BAT18VLI
(3.0 AH) Hi-capacity

Chargers:

120V-AC Cat.# PATCHGR-LI
12/24-DC Cat.# PATCHGR-LIDC
240/250V-AC Cat.# PATCHGR-LI250V

Lanyard: Cat.# PT208620

Approx. Wt. Each - 11 lbs. (4.9 kg) with Battery
Kit Shipping Wt. - 23 lbs. (10.5 kg)

ANDERSON® VERSA-CRIMP® HYDRAULIC COMPRESSION TOOL BATTERY OPERATED TYPE VCBP63

| |
|---------------|
| TOOL |
| VCBP63 |
| AL/CU |



Type VCBP63

- 18 volt Lithium-Ion rechargeable batteries
- The original VERSA-CRIMP compression tool allows direct access of the tool to the connector
- Four-nib dieless head with 360 degree rotation
- Crimps range-taking Versa-Crimp and Versatile connectors
- Comfortable overmolded handle balanced for one hand operation

Includes:

- 18 volt battery powered dieless crimp tool
- Two 18-volt 3.0 Ah Lithium-Ion batteries
- AC charger - 30 minutes recharge
- High impact plastic case - ergonomic carrying design with storage.
- Lanyard strap
- Instruction manual and warranty card
- 5-year limited tool warranty with 1-year on batteries and charger

ACCESSORIES

Battery: Cat.# BAT18VLI
(3.0 AH) Hi-capacity

Chargers:

120V-AC Cat.# PATCHGR-LI
12/24-DC Cat.# PATCHGR-LIDC
240/250V-AC Cat.# PATCHGR-LI250V

Lanyard: Cat.# PT208620

Conductor Range - #10 Str. - 750 MCM Al/Cu
Approx. Wt. Each - 13.2 lbs. (5.9 kg.) with Battery
Kit Shipping Wt. - 25 lbs. (11.1 kg)



VERSA-CRIMP® HYDRAULIC COMPRESSION TOOL BATTERY OPERATED TYPE VCBP6FT

| |
|---------|
| TOOL |
| VCBP6FT |



Type VCBP6FT

- 18 volt Lithium-Ion rechargeable batteries
- The flip-top latch provides clear and easy removal from larger connectors and in limited space
- Four-nib dieless head with 360 degree rotation
- Crimps range-taking Versa-Crimp and Versatile connectors
- Comfortable overmolded handle balanced for one hand operation

Includes:

- 18 volt battery powered dieless crimp tool
- Two 18-volt 3.0 Ah Lithium-Ion batteries
- AC charger - 30 minutes recharge
- High impact plastic case - ergonomic carrying design with storage.
- Lanyard strap
- Instruction manual and warranty card
- 5-year limited tool warranty with 1-year on batteries and charger

- Conductor Range** - #10 Str. - 750 MCM Al/Cu
- Approx. Wt. Each** - 12.8 lbs. (5.7 kg.) with Battery
- Kit Shipping Wt.** - 24.5 lbs. (10.9 kg.)

ACCESSORIES

Battery: Cat.# BAT18VLI
(3.0 AH) Hi-capacity

Chargers:
120V-AC Cat.# PATCHGR-LI
12/24-DC Cat.# PATCHGR-LIDC
240/250V-AC Cat.# PATCHGR-LI250V

Lanyard: Cat.# PT208620

DG
8



VERSA-CRIMP® HYDRAULIC COMPRESSION TOOL HAND OPERATED TYPE VC63SP

| |
|--------|
| TOOL |
| VC63SP |
| AL/CU |

- Open Head design allows direct access to the connector in restricted areas.
- Two Stage Pump Design allows nibs to travel from full open to full close much faster.
- Ergonomic Case has handle at balance point making tool much easier to carry.
- Range: #10 stranded to 750 MCM AL/CU
- Head rotates 360°
- Repair parts available in kit form
- Direct Reading Pressure Gauge available
- 2-Year Warranty



What's in the Box:

Versa-Crimp® Tool
Ergonomic Case
Instruction / Parts Manual

Approx. Weight:

15.6 lbs. Gross
12.0 lbs. Tool Only

VERSA-CRIMP® HYDRAULIC COMPRESSION TOOL HAND OPERATED TYPE V6FTSP

| |
|---------|
| TOOL |
| VC6FTSP |
| AL/CU |

- Flip Top Head design allows easy installation of connectors to insulated cable.
- Two Stage Pump Design allows nibs to travel from full open to full close much faster.
- Ergonomic Case has handle at balance point making tool much easier to carry.
- Range: #10 stranded to 750 MCM AL/CU
- Head rotates 360°
- Repair parts available in kit form
- Direct Reading Pressure Gauge available
- 2-Year Warranty



What's in the Box:

Versa-Crimp® Tool
Ergonomic Case
Instruction / Parts Manual

Approx. Weight:

15.6 lbs. Gross
12.0 lbs. Tool Only

DG
9



VERSA-CRIMP® HYDRAULIC COMPRESSION TOOL – HAND OPERATED TYPE VC7SP

| |
|---------|
| TOOL |
| VC7SP |
| CU ONLY |



- Open Head design allows direct access to the connector in restricted areas.
- Two Stage Pump Design allows nibs to travel from full open to full close much faster.
- Ergonomic Case has handle at balance point making tool much easier to carry.
- Range: #10 stranded to 750 MCM COPPER ONLY
- Head rotates 360°
- For compressing multi-strand/rope lay copper cable in mining, marine and industrial applications
- Copper label denotes copper connectors use only
- Repair parts available in kit form
- Direct Reading Pressure Gauge available
- 2-Year Warranty

What's in the Box: Versa-Crimp® Tool
Ergonomic Case
Instruction / Parts Manual

Approx. Weight: 15.6 lbs. Gross
12.0 lbs. Tool Only

NOTE: Due to high point pressure developed by this tool, it is not to be used on aluminum conductor or cable

VERSA-CRIMP® HYDRAULIC COMPRESSION TOOL – HAND OPERATED TYPE VC7FTSP

| |
|---------|
| TOOL |
| VC7FTSP |
| CU ONLY |



- Flip Top Head design allows easy installation of connectors to insulated cable.
- Two Stage Pump Design allows nibs to travel from full open to full close much faster.
- Ergonomic Case has handle at balance point making tool much easier to carry.
- Range: #10 stranded to 750 MCM Al/CU
- Head rotates 360°
- For compressing multi-strand/rope lay copper cable in mining, marine and industrial applications
- Copper label denotes copper connectors use only
- Repair parts available in kit form
- Direct Reading Pressure Gauge available
- 2-Year Warranty

What's in the Box: Versa-Crimp® Tool
Ergonomic Case
Instruction / Parts Manual

Approx. Weight: 15.6 lbs. Gross
12.0 lbs. Tool Only

NOTE: Due to high point pressure developed by this tool, it is not to be used on aluminum conductor or cable

DG
10



VERSA-CRIMP® HYDRAULIC COMPRESSION TOOL REMOTE-POWER OPERATED TYPE VC6FTR

- 750 MCM Al/Cu Max. Range
- Flip-top latch provides clear and easy removal from larger connectors and in limited spaces.

Includes:

- 3/8" male quick coupler
- High impact plastic carrying and shipping case
- Service manual
- 2-Year Warranty

Note: 1) Operates from hydraulic pump delivering 10,400 psi.



Type VC6FTR

| |
|--------|
| TOOL |
| VC6FTR |
| AL/CU |

Conductor Range - #10 Str. – 750 MCM Al/Cu
Approx. Weight Each: 6 lbs. (2.7 kg.)

VERSA-CRIMP® HYDRAULIC COMPRESSION TOOL – REMOTE-POWER OPERATED TYPE VC6R

- Original notched-top VERSA-CRIMP compression tool allows direct access of the tool to the connector.
- Readily adaptable for energized line use.
- 750 MCM Al/Cu max.

Includes:

- 3/8" male quick coupler
- High impact plastic carrying and shipping case
- Service manual
- 2-Year Warranty

Note: Operates from hydraulic pump delivering 10,900 psi



Type VC6R

| |
|-------|
| TOOL |
| VC6R |
| AL/CU |

Conductor Range - #10 Str.—750 MCM Bare Al
#10 Str.—750 MCM Bare Cu
Approx. Weight Each: 5.5 lbs. (2.5 kg.)

VERSA-CRIMP® HYDRAULIC COMPRESSION TOOL – REMOTE-POWER OPERATED TYPE VC7R

- The original notched-top VERSA-CRIMP compression tool allows direct access of the tool to the connector, 750 MCM Max. Cu.
- For compressing multi-strand/rope lay copper cable in mining, marine and industrial applications.
- Copper color label denotes use with copper connectors, only.

Includes:

- 3/8" male quick coupler
- High impact plastic carrying and shipping case
- Service manual
- 2-Year Warranty

Notes: 1) Due to high jaw pressure developed by this tool, it is not to be used on aluminum connector or cable.
2) Operates from hydraulic pump



Type VC7R

| |
|------------|
| TOOL |
| VC7R |
| For Copper |

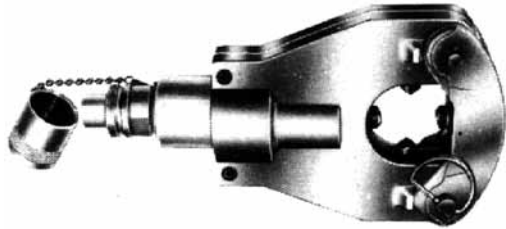
Conductor Range - #10 Str.—750 MCM Cu only
Approx. Weight Each: 5.5 lbs. (2.5 kg.)

DG
11



VERSA-CRIMP® HYDRAULIC COMPRESSION TOOL REMOTE-POWER OPERATED TYPE VC7FTR

| |
|---------|
| TOOL |
| VC 7FTR |
| Copper |



Type VC7FTR

Conductor Range - #10 Str.—750 MCM Cu

Approx. Weight Each: 6 lbs. (2.7 kg.)

- The flip-top latch provides clear and easy removal from larger connectors and in limited spaces.
- For compressing multi-strand/rope lay copper cable in mining, marine and industrial applications.
- Copper color label denotes use with copper connectors, only.

Includes:

- 3/8" male quick coupler
- Service manual
- High impact plastic carrying and shipping case
- 2 year warranty

- Notes:** 1) Due to high point pressure developed by this tool, it is not to be used on aluminum connector or cable.
2) Operates from hydraulic pump delivering 10,400 psi.

VERSA-CRIMP® HYDRAULIC COMPRESSION TOOL - REMOTE-POWER OPERATED TYPE VC8C Kit (Contractor/Industrial)

| |
|-------|
| TOOL |
| VC8C |
| AL/CU |



Type VC8C

Conductor Range - 250—1000 MCM Al
500-1500 MCM Cu
250 Str.—1033.5 AAC (Full Tension)

Approx. Weight Each: 19.75 lbs. (9.0 kg.)

- The flip-top latch provides clear and easy removal from connectors.
- Hanger bail assists in carrying and positioning during use.

Includes:

- Metal carrying case
- In-line pressure gauge for check of operating pressure
- 3/8" male quick coupler
- Hex wrench with 4 universal crimping nibs marked "Al"
- Service Manual
- 2 year warranty

- Notes:** 1) Not for crimping two piece multi-core ACSR connectors - See VC8U tool.
2) Operates from hydraulic pump delivering 10,400 psi.

VERSA-CRIMP® HYDRAULIC COMPRESSION TOOL - REMOTE-POWER OPERATED TYPE VC8U Kit (Utility)

| |
|------------|
| TOOL |
| VC8U |
| AL/CU/ACSR |



Type VC8U

Approx. Weight Each: 19.75 lbs. (9.0 kg.)

Same as Type VC8C above, except:

- 4 additional crimping nibs marked "ST" for use on all steel inner sleeves as supplied with multicore full tension ACSR sleeves and dead-ends
- Service manual
- 2 year warranty

- Notes:** 1) With "ST" nibs installed, tool is for crimping two piece multi-core ACSR connectors.
2) Operates from hydraulic pump delivering 10,400 psi.

Conductor Range - 3/0 Str.—1033.5 MCM Al
3/0 Str.—954 (54/7) ACSR
500 Str.—1500 MCM Cu
266.8 26/7-1113 45/7 ACSR (Full Tension)



ACCESSORIES HYDRAULIC HOSE ASSEMBLY TYPE VC3BN (FEMALE COUPLERS)

| |
|-------------------------|
| ACCESSORIES |
| VC3BN |
| HIGH PRESSURE Female |

- Orange non-conductive hose for energized line operation.
- 10,000 PSI operating pressure.
- Burst strength is over 3 1/2 times operating pressure.
- Reinforced safety guards covering both ends.
- 3/8" Female coupler on each end.



| CATALOG NUMBER | LENGTH - FT. (METERS) | APPROX. WT. LBS. (KG) |
|----------------|-----------------------|-----------------------|
| VC3BN6 | 6 (1.8) | 2.8 (1.3) |
| VC3BN10 | 10 (3) | 3.3 (1.5) |
| VC3BN15 | 15 (4.5) | 5 (2.3) |

ACCESSORIES HYDRAULIC QUICK COUPLER TYPE VC

| |
|-------------|
| ACCESSORIES |
| VC |

- Quick coupler adapter assemblies and half section for splicing hydraulic hoses and unmatched tool/ hose combinations



VCFF



VCMM



VCHM



VCHFF

| CATALOG NUMBER | DESCRIPTION | APPROX. WT. LBS. (KG) |
|----------------|---|-----------------------|
| VCFF | Female Receptacle on Both Ends 3/8" | 1.2 (.54) |
| VCHFM | Female Half Only with Male Threads 3/8" | 1.2 (.54) |
| VCMM | Male Tips on Both Ends 3/8" | .8 (.36) |
| VCHM | Male Tip Only Has Female Threads 3/8" | .8 (.36) |
| VCHFF | Female Half Only with Female Threads 3/8" | 1.2 (.54) |

DG
13



IN-LINE READING PRESSURE GAUGE FOR VC REMOTE TOOLS TYPE VCLPG

ACCESSORIES

VCLPG



- In-line pressure gauge for checking operating pressure on all remote power operated VERSACRIMP tools.
- Supplied as standard equipment with the VC8 tool.

Includes:

- 3/8" male quick coupler; male on one end, female on other end
- Plastic carrying case
- Shatter-proof plastic face plate

ACCESSORIES

VCHTG

DIRECT READING PRESSURE GAUGE TYPE VCHTG FOR VC HAND TOOLS



- For use in checking and setting correct operating pressure of all VERSA-CRIMP hand tools.
- Not for use with remote power operated tools (refer to Type VCLPG).
- Can be used while crimping connectors.
- Installation of gauge does not affect hydraulic integrity of tool.
- Large, easy to read dial with tool pressure ranges indicated in green on dial face.
- High impact plastic carrying and shipping case.
- Weight 1.56 lbs/.71 kg.

Note: Complete instructions included

ACCESSORIES HYDRAULIC OIL TYPE VCO

ACCESSORIES

VCO



- For use in the hydraulic systems of all VERSA-CRIMP hand operated tools and power sources.

- Notes:**
- 1) Type VCO—For Operating Temperatures from 20°F (-8°C) to 200°F (92°C)
 - 2) Type VCO is normally supplied in all VERSA-CRIMP hand operated tools and power sources.

| CATALOG NUMBER | CONTAINER SIZE | APPROX. WT. LBS. (KG) |
|----------------|----------------|-----------------------|
| VCO1Q | 1 Quart | 2.3 (1.1) |

Note: Low Temperature -30°F—40°F Hydraulic oil may be made by mixing VCO oil and kerosene at a 50/50 ratio. (Previously VLTO Oil)