

ALFATECH

INNOVATIVE IDEAS | INTEGRATED SOLUTIONS | SUSTAINABLE PARTNERS

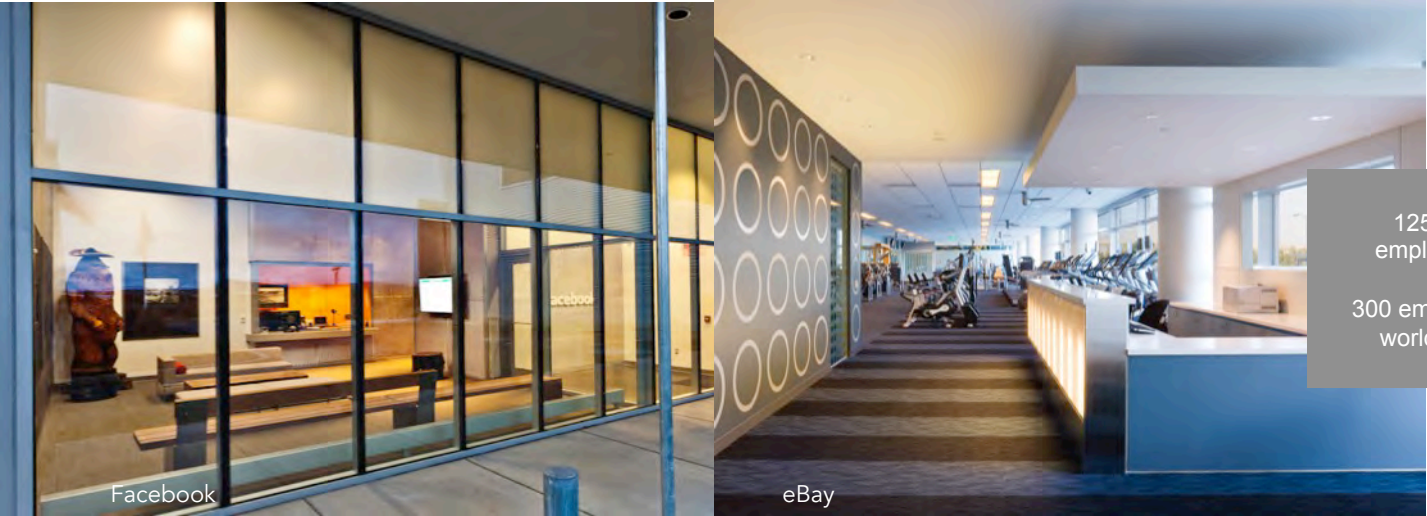


01

OVERVIEW

Profile & Services

PROFILE



125 US employees
300 employees worldwide

AlfaTech has built its reputation on providing the most innovative and sustainable engineering solutions for all levels of urban residential development, from master planning through construction administration.

Our presence is not only California and Atlanta, but also internationally. Our clients include numerous large multi-national firms, many ongoing clients we've been serving for years.

We strive to provide intelligent and innovative strategies starting with project inception, in order to provide maximum benefit to our clients during the entire development process whether it be new residential villages, mixed use projects or revitalization of existing communities.

Our team provides the most appropriate engineering design solutions which are highly efficient and cost effective, and promotes the greatest possible return on investment for our clients.

Our goal is to build the most dynamic relationships, be attentive to the needs of our clients and partners, and be true team players. With this mindset, we've built a stellar list of clients.



CLIENTS

3M Company
AARP
Abbott Biotherapeutics
Abbott Laboratories
Abbott Vascular Inc
Abgenix
Abt Associates Inc
ACCO Engineered Systems
Adaptec Inc
AOC
Adobe Systems
Advanced Micro Devices Inc
Advantest America, Inc.
Advent Software, Inc.
Aetna Inc
Affymetrix
Agilent Technologies Inc
Airgas
Akamai Technologies
Alcoa Inc
Allen, Matkins et al
Alliance Bernstein LLP
Alta Bates Health System
Altera Corporation
Alum Rock School District
Alza Corporation
Amazon/Lab 126
Ambiance Associates
Ambiance Interiors Pvt Ltd.
Amdocs
American Express Company
Amgen Inc
Amprius
Amstein + Walther
Anixter
Applied Dynamics Inc
Applied Materials
Atmel Corp
Autodesk Inc
Avaya
Avid Technology Inc
Avidex
BAE Systems Inc
Bank of America
Banuazizi Architects
Bayer
Bechtel Corporation
Bell, Rosenberg et al
Berryessa USD
Bingham McCutchen LLP
Bio-Rad Laboratories
BioGenex
BioMed Realty Trust Inc
Bloom Energy
BMC Software
Booz Allen Hamilton Inc
Boston Properties

Boston Scientific
Bradford Schools Inc
Brewer, Fraser & Holland
Brian L. Cochran Associates
Bristol-Myers Squibb
Broadcom Corporation
Broadreach Capital Partners
Brocade
Cadence Design Systems
Cal Pacific Med Center
California Pacific Orthopedic Sports & Medicine
CarrAmerica Development
Chabot Las Positas Community College District
Charles Schwab
Chevron
Children's Hospital Oakland
Chinese Hospital
Chiron Corporation
Cisco Systems Inc
Citigroup Realty Services
College of Contra Costa
College of Marin
Colliers International
Computer Associates Int'l
Compuware
CoreSite
Cornell University
County of Monterey
County of Sacramento
County of San Mateo
County of Santa Clara
Credence
CSAA
CSU Northridge
Daughters of Charity Health
Dell
Delta Products
Deloitte Consulting LLP
Desert Troon Companies
Digital Realty Trust
Dignity Health
Dominican Hospital
Dupont
East Side Union HSD
eBay
Eli Lilly & Company
El Camino Hospital
Elsevier Inc
Emirates National Oil
Empire State Development
Equinix
Equis Corporation
Ericsson
Ernst & Young LLP
Exelixis
Facebook
Ferrari Maserati of Silicon Valley

Fidelity Investments
Fireman's Fund Insurance
First Franklin Financial Corp
Flextronics
Foundry Networks
Franklin Templeton Investments
Genentech
General Dynamics
General Electric Co
General Services Administration
Genzyme Corporation
Gilead Sciences Inc
Goldman Sachs & Co
Good Samaritan Hospital
Google
GSA
Hayward USD
Hewlett Packard
Highland Hospital
Hitachi America Ltd
IBM
Impax Laboratories Inc
Informatica Corporation
Intel
InterMune
Intuit
J&W Scientific
JDS Uniphase Corporation
John Muir Medical Center
Johnson & Johnson
Johnson Controls
JP Morgan Chase
Juniper Networks Inc
Junipero Serra High School
Kaiser Permanente
Kasowitz, Benson et al
Kimpton Hotels
KLA-Tencor Corp
Lam Research
Laney College
Lawrence Berkeley Lab
Letterman Digital Arts
Levi Strauss & Company
Linear Technology
LinkedIn
Lockheed Martin Corp
Logitech
Longs Drug Stores
Los Gatos Saratoga HSD
Lucas Film LTD
Marriott International
Marvell Semiconductor Inc
Maxim
McKesson
Medarex
Menlo Park City School District
Microsoft Corporation

Molecular Devices Corporation
Monterey Peninsula College
Morgan Hill USD
Morgan Stanley Corporation
Morrison & Foerster LLP
Motorola
Mountain View School District
MW Zander
NAI Global
NASA-Ames
National Semiconductor
Network Appliance
Nokia
Nortel Networks
Northrop Grumman Corp.
Novartis
Novell Inc
Novellus Systems Inc
NVIDIA
Ohlone Community College
OptiSolar Inc
Oracle Corporation
Orchard Properties
Pacific Bell
Pacific Gas & Electric
Panattoni Europe
Pfizer Inc
Philips Semiconductor
Pitney Bowes Inc
Polycom
Port of San Francisco
Presidio Trust
Price Waterhouse Coopers
Prudential C.R.E.S.
Qualcomm
Queens Medical Center
RAMBUS
Raytheon Company
Rensselaer County IDA
Riverbed Technologies
Robert Half International
Roche Bioscience
Ross Stores Inc
Sacramento Municipal Utility District
Safeway Inc
Saint Louise Regional Hospital
Salesforce.com
Samaritan Medical Center
Samsung
San Francisco Center For Economic Development
San Francisco City Hall
San Francisco Center For Economic Development
San Francisco International Airport
San Francisco USD
San Jose Redevelopment Agency

San Jose State University
San Mateo Community College
San Mateo County Office of Education
Sandia Laboratories
Santa Clara University
SAP Labs LLC
Saratoga USD
Savvis
Seagate Technology
Sequoia Hospital CHW
Sequoia Union HSD
Siemens
Skywalker (Lucas Film)
SLAC National Accelerator Laboratory
Solectron Corporation
Sony America
Spansion
Sprint
SRI International (Stanford Research)
St. Agnes Medical Center
St. Francis Memorial Hospital
St. Joseph Hospital
St. Mary's Hospital
Stanford Healthcare & Clinics
Stanford University
Stanford University Medical Center
Stion Corporation
Stryker Endoscopy
Stubhub
Sun Microsystems Inc
SunPower
Sutter Health
Sybase Inc
Symantec
Synopsis Inc
Sysorex
T-Mobile
Tencent
Tesla Motors
The Gap
Twitter
UC Berkeley
UC Davis
UC San Francisco
UC Santa Cruz
UCLA
Ultratech
University of Colorado Hospital
URS
Verisign
Verizon Communications
Veteran's Administration
Visa International
VMware
Wachovia Bank
Yahoo

SERVICES

SUSTAINABILITY

Sustainability Planning (Organizational and Infrastructural)
LEED / Green Building Consulting
Masterplanning
Life Cycle Cost Assessment
Occupant Wellness and Comfort

MECHANICAL ENGINEERING DESIGN

HVAC
Heating Systems Water and Gas
Cooling Systems / Chilled Water
Dehumidification Systems
Contamination Sensitive Areas
Industrial Hygiene Systems
Low Tolerance Temp Control
Title 24 Analysis and Design
Heat Recovery Systems
Central Utility Plants
Air Handlers HVAC System Controls
PLC Programming
Fire Protection and Plumbing

ADVANCED SIMULATIONS

Façade Engineering
CFD / Wind Studies
Wind Studies
Thermal Stratification Studies
Energy Concept Studies

ELECTRICAL ENGINEERING DESIGN

Power Systems
Emergency & Standby Power
Lighting and Lighting Controls
Security Systems
24 / 7 Power Systems (UPS)
Power Monitoring Systems
Toxic Gas Monitoring

ELECTRICAL ENGINEERING DESIGN (Continued)

Graphic Control and Alarm Panels
Grounding and Bonding
Energy Management
Energy Conservation
Fire Alarm Systems
Public Address Systems
Plug Loads Control

DESIGNER LIGHTING

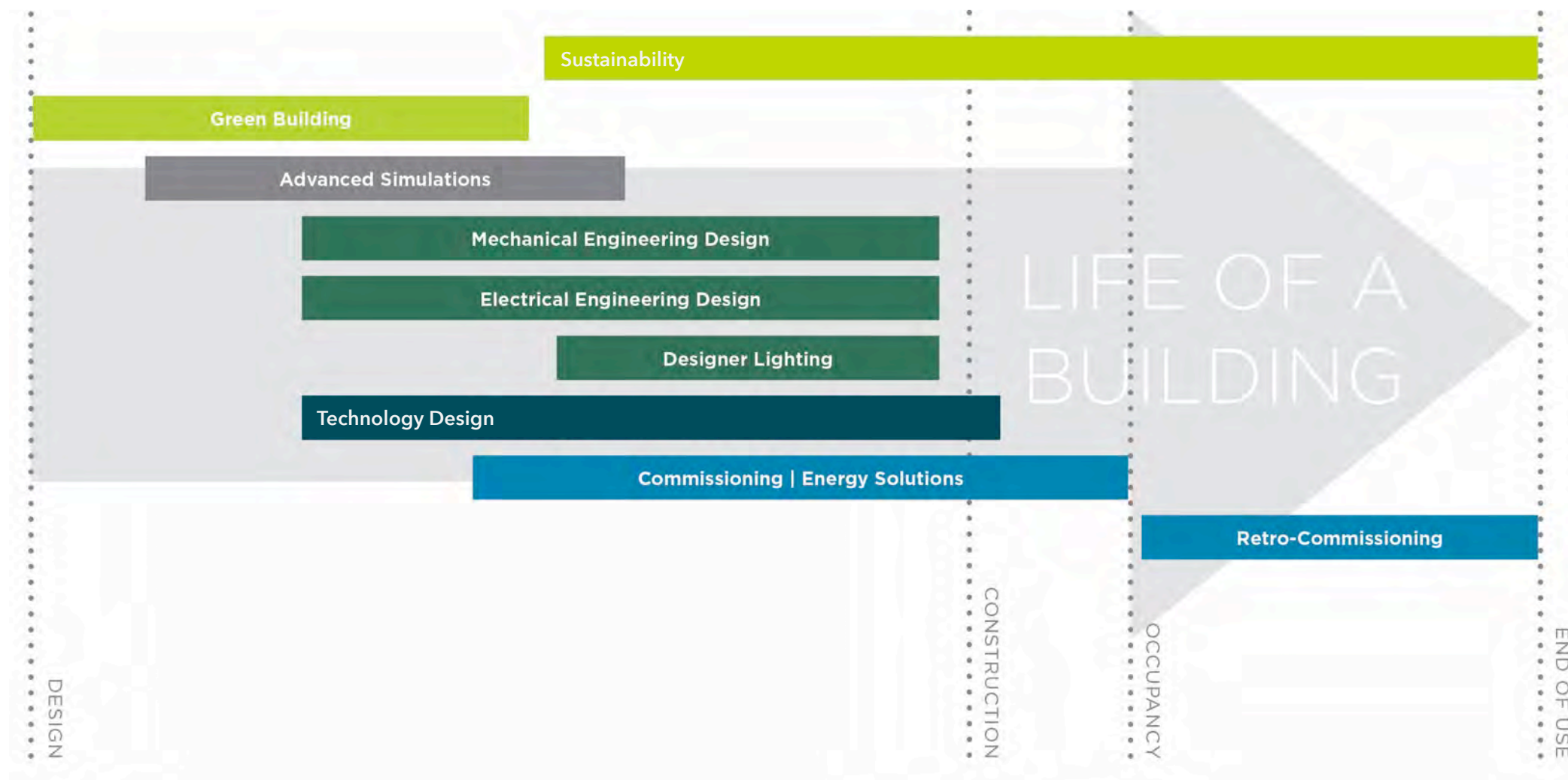
Lighting and Lighting Controls
Lighting Calculations
Customized ROI Calculations
Sustainable Lighting Design
Energy Savings Analysis
Custom Lighting Fixtures
Design for finishes, fabrics and light sources

TECHNOLOGY DESIGN

Low Voltage Design
Security Design
Audio Visual Design
Wireless Design & Modeling
Strategic Consulting
Project Management
Relocation & Migration

COMMISSIONING | ENERGY SOLUTIONS

Early Quantifiable Energy Study
Incentives
Energy Star® Assessments
Retro-commissioning (RCx)
Monitoring Brand Continuous Commissioning (MBCCx)
ASHRAE Level 1, 2 and 3 Energy Audits
Measurement and Verification (M&V) of installed projects
Energy Modeling
Net Zero Energy Budgeting
HVAC/Chilled Water Plant Optimization





02


SUSTAINABILITY

SUSTAINABILITY

At **AlfaTech**, we have a multidisciplinary team of experts to assess and design projects with a holistic approach. Working along with owners, architects and other stakeholders, we examine every project in a comprehensive, systematic approach to meet the client's sustainability, energy, water and environmental quality goals.

AlfaTech goes beyond engineering – our suite of energy, water and sustainability assessment services creates projects that benefit the triple bottom line – people, plant and profit. We provide expert studies in all qualitative aspects of the built environment such as day lighting, thermal comfort, advanced lighting control design, and technology integration.

Our offices in the San Francisco Bay Area are a testimonial to our commitment to promoting sustainable practices. We have implemented measures in daylight harvesting and advanced lighting controls to optimize electricity usage, and have put in measures to reduce overall waste and beat San Francisco's overall recycling rates.

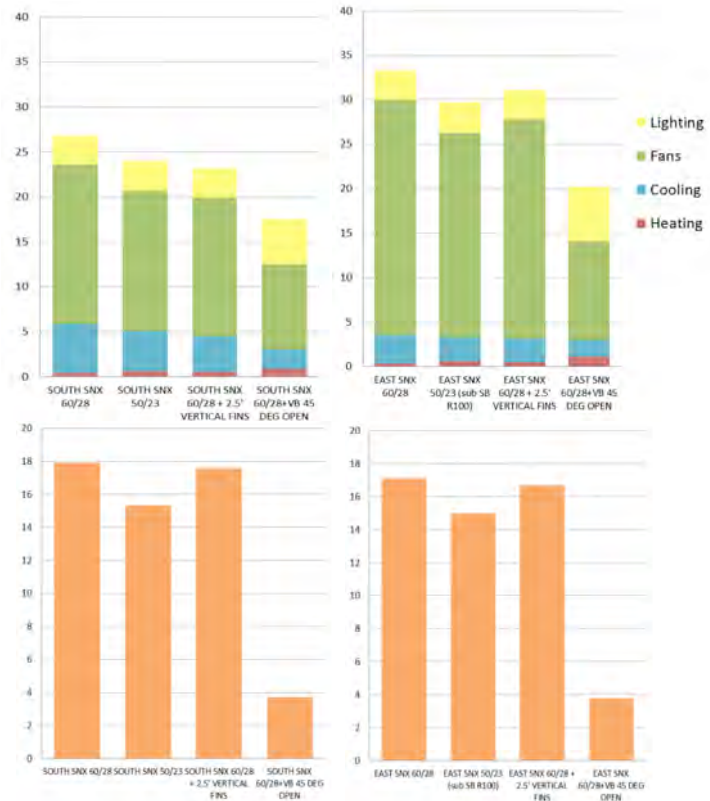


We examine every project with a comprehensive systematic approach to meet the client's sustainability, energy, water and environmental quality goals.

ADVANCED SIMULATIONS

We provide various advanced computer simulations to study wind patterns, thermal stratification and comfort issues in spaces, building façade studies and energy modeling to aid architects and owners make key decisions during the early stages of design.

- Façade Engineering
- CFD/Wind Studies
- Thermal Stratification Studies
- Energy Concept Studies
- Energy Modeling



FAÇADE LOAD STUDY



URBAN WIND STUDY

CASE STUDY:

UBER – MISSION BAY HEADQUARTERS San Francisco, CA

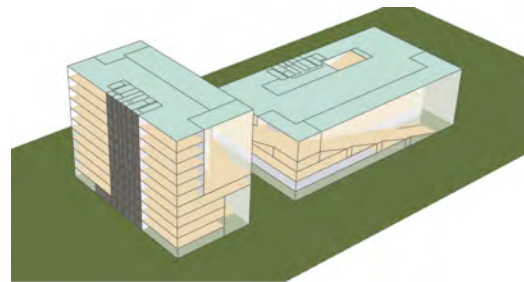
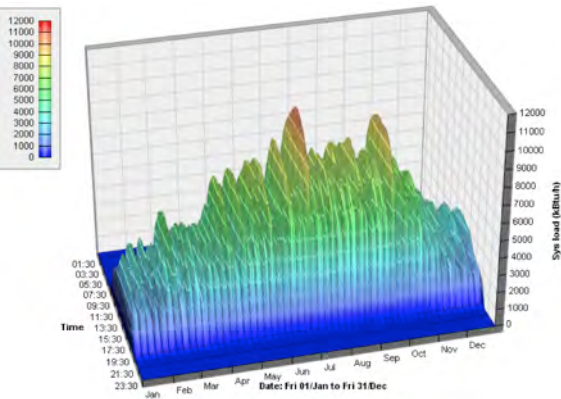
Type: New Campus
Size: 420k SF

AlfaTech is currently involved in this confidential client's new San Francisco presence which is a new 420,000 square-foot, ground up office building in the Mission Bay area in San Francisco. Our scope of work includes mechanical, electrical, plumbing, technology, security, and sustainability services. AlfaTech assisted the architectural design team with optimizing performance by assessing various utility, façade and wind studies. The project is designed as an innovative, ultra-high performance building that includes a façade that responds to programmatic needs, an under floor air distribution system, a "winter garden" which acts as the main social space incorporating natural ventilation, and a proposed geothermal system to substantially reduce cooling equipment needs.

AlfaTech has been providing MEP Engineering and Technology services for this client in the US and Globally for ten sites, including the new corporate headquarters in San Francisco. This is a state of the art new campus with over 420k SF of offices, a full kitchen and cafeteria. The project will include evaluation of all available sustainability features.

Sustainability goals:

- Significant reduction of building energy cooling needs by the use of geothermal exchange systems
- Aggressive rainwater capture and retention
- Natural ventilation for main atrium social areas, creating a pleasant, open experience for employees and visitors
- Maximize use of day lighting to optimize workspace quality



CASE STUDY:

LENNAR CANDLESTICK POINT & HUNTER'S POINT MASTER PLAN San Francisco, CA

Type: New Developments

Size: 702-Acre New Developments

The Candlestick Point and Hunter Point Shipyard is a 702-acre development that has the potential to bring most dynamic companies into the area and develop whole communities. This area will house R&D facilities, commercial spaces, multi-use buildings and retail spaces. Parks, trails, and open spaces will be additional features that will attract and enhance the community. The new development will add over 10,000 new residential units in the form of condominiums and low-, mid- and high-rise buildings. There will be over a million square feet of commercial space made available, over three million square feet for Research and Development, as well as over 300,000 square feet of property devoted to community activities.

AlfaTech views this holistic approach to community development as an opportunity for Lennar Urban to be at the vanguard of urban design by creating a community infrastructure focused on environmental sustainability, technology, and self-sustaining. This means taking advantage of existing technologies to generate energy with the lowest environmental impact.

We conducted a series of sustainable mechanical studies in a master plan scale to help the owners understand the options available to explore the feasibility of netzero energy for the new development. Proposed strategies involve the following:

- Geothermal heat rejection systems
- High performance chillers and thermal energy storage
- Biodigestion system for heat recovery and energy generation
- Solar photovoltaic array for electricity generation
- Rainwater and graywater capture and treatment





LEED
PLATINUM



NET ZERO

CASE STUDY:

DELTA PRODUCTS HEADQUARTERS LEED PLATINUM / NET ZERO Fremont, CA

Type: SF Campus
Size: 250k SF

Delta Products desired a new headquarters highlighting sustainability and energy efficiency with primary goals to showcase Delta Products' innovation in a state of the art building blending the natural surroundings with sustainable building design.

The Delta Americas Headquarters is a three-story 250,000 SF campus consisting of private offices, administrative, open workspace, conference/auditorium facilities, kitchen/dining areas, labs, office and warehouse. AlfaTech provided sustainable mechanical electrical plumbing engineering design services for this project focusing on the client's desire to maximize natural ventilation and daylighting reduce water and energy consumption with a geothermal central plant and utilize radiant systems for primary space conditioning.

AlfaTech conducted extensive CFD modeling to assist with sizing and locating windows around the building and their integration into a thermal tower ventilation strategy. The project also encompasses a photovoltaic system to balance energy consumption and achieve Net Zero Energy.

Some of the features included are:

- Ground source heat pumps
- Solar energy system
- Natural ventilation
- Active chilled beam
- LED lighting
- Spectrally selective glazing
- Grass and native plants
- Ecological ponds
- EV chargers
- Rainwater harvesting
- Elevator power regeneration systems
- Energy efficient HVAC system
- Energy storage solutions
- Hydronic bidirectional heating/cooling flooring systems



03

Relevant Projects

RELEVANT PROJECTS

UBER

AlfaTech has been providing comprehensive engineering design services for nearly 2M SF for Uber since 2014. This includes:

- MEP Design
- Architectural lighting design
- Architectural Lighting Design
- Rainwater Collection System Design
- PV and Fuel Cell Design
- Technology (Security, IT and A/V) Design
- Commissioning

The following are significant projects completed for Uber.

UBER / MISSION BAY NEW HEADQUARTERS

San Francisco, CA

Type: New Site and Two High-Rise Office Buildings
Size: 420,000 SF

AlfaTech provided comprehensive engineering and technology design for two new high-rise buildings for Uber's new headquarters.

AlfaTech provided design services for initial master planning and building design. AlfaTech then provided full design, MEP, Technology, PV and fuel cell system design for the full shell/core and tenant improvements. This included administrative office space, full kitchen/cafe/retail, daycare and retail space.

UBER / UPTOWN STATION

Oakland, CA

Type: High-Rise Office Building
Size: 520,000 SF

AlfaTech provided MEP and Technology Engineering Services for his high-rise building in center of the city. AlfaTech provided full design services for site, shell/core and tenant improvements, which included central chiller plant and 12kv high voltage power distribution.

UBER / 1455 MARKET STREET

San Francisco, CA

Type: Office Tenant Improvements
Size: 177,000 SF

AlfaTech provided mechanical, electrical and plumbing engineering design service and commissioning for Uber's original headquarters in this downtown high-rise. This project encompassed five floors for a total of 177k SF.

UBER / 685 MARKET STREET

San Francisco, CA

Type: High-Rise Offices and Full Kitchen
Size: 154,000 SF

AlfaTech provided mechanical, electrical, and plumbing engineering design service and commissioning for seven floors of this downtown location. This included administrative office space, breakout areas, kitchenettes and conferencing spaces for this Fortune 500 firm.

UBER / 555 MARKET STREET

San Francisco, CA

Type: High Rise Offices
Size: 247,000 SF

AlfaTech provided mechanical, electrical, and plumbing engineering design service and commissioning for fifteen floors in this 21-story office building in downtown San Francisco. This project included administrative office space, breakout areas, kitchenettes and conference spaces.



RELEVANT PROJECTS

LINKEDIN San Francisco, CA

Type: Office
Size: 450,000 SF

AlfaTech provided comprehensive mechanical, electrical, plumbing engineering and technology design and space planning services for this new ground-up project in the heart of SOMA in San Francisco. The project, recently awarded, includes tenant improvements to the 26-story office building located at 222 Second Street.

LINKEDIN Mountain View, CA

Type: Office
Size: Approx. 575,000 SF

- Projects:
- Building B: 6 stories, 208,500 SF
 - Building C: 6 stories, 208,500 SF
 - Building D: 4 stories, 152,600 SF
 - Campus Service Building: 5,000 SF

AlfaTech provided mechanical, electrical, plumbing engineering, and lighting design services in support of tenant improvements for three buildings and a campus service building.

LINKEDIN Sunnyvale, CA

Type: Office
Size: 576,000 SF

AlfaTech provided mechanical, electrical, plumbing engineering, lighting design and technology design services including audio visual for this new ground-up campus including full cafeteria and multipurpose.

LINKEDIN New York, NY

Type: Office
Size: Approx. 80,000 SF

AlfaTech provided mechanical, electrical, plumbing engineering and full design for all technology infrastructure, including structured cabling, and AV systems. Facilities included training rooms, all-hands and various sized meeting spaces, and videoconference rooms. Responsibilities included full coordination with the design team, development of technology plans and specifications, facilitation of the bidding process for low voltage and AV sub-contractors and support during construction. AlfaTech developed and continues to maintain the technology standards for LinkedIn that have been used for this and many other projects globally.



RELEVANT PROJECTS

CONFIDENTIAL HIGH-TECH CLIENT

345 Spear Street, San Francisco, CA

Type: Tenant Improvement

Size: 89,000 SF

MEP services for new 89,000 SF office space on one single floor plate to house this client's first San Francisco presence. AlfaTech provided MEP Bid Documents and subsequent review of the MEP Design-Build Subcontractors' Permit and Construction Drawings.

This project consists of the 6th floor build out, including new 64,000 SF café, remodel of another 8,000 SF Café and 5th floor remodel. This project included video conference rooms, creative break-out spaces, lunch/break areas, and server room.

Current Projects:

- Google 2598 Bayshore
- Google 999 Bayhills
- 475 Emulation Labs
- 1255 Pear Avenue
- Google 237 Moffett
- Two Rincon
- 1625 Plymouth



RELEVANT PROJECTS

CONFIDENTIAL CLIENT

Sunnyvale , CA

Type: Campus
Size: 18-acres

AlfaTech provided full MEP design services and LEED administration services for this project. The project consisted of three interconnected, six-story building with two levels of podium parking. The campus included cafes, open environment offices, software and hardware labs, server rooms, conference rooms, and break rooms etc. There was also a fitness + wellness center.



CONFIDENTIAL CLIENT

Cupertino, CA

Type: Campus
Size: 600,000 SF +

AlfaTech provided full MEP design services and LEED administration services for core and shell and tenant improvements. The project consisted of an office building which included parking and was a total of 300,000 SF. The other building was a testing facility that included a Tier II data center and was a total of 225,000 SF. The future 75,000 SF marcom building is also included as a studio facility. This project is located on the east and west side of North Tantau Avenue.



RELEVANT PROJECTS

VISA METRO CAMPUS

Foster City, CA

Type: Offices

Size: 349,000+ SF

AlfaTech completed multiple phases of renovations and interior improvements for the Metro One, Two and Three buildings on Visa's campus, including several floors of office space, the Cafeteria and the Auditorium/Lobby. Services included mechanical, electrical and plumbing engineering, fire protection and construction administration. Most recently awarded project includes tenant improvements to Buildings M1 & M2, a total of 400,000 SF.



RELEVANT PROJECTS

EBAY

San Jose, CA

Type: Office, Data Center
Size: 109,000 SF

AlfaTech provided full mechanical and electrical upgrades for eBay's "North Campus" which is affiliated with the Corporate Headquarters facility also located in San Jose.

The firm provided engineering design for interior improvements for two 109,000 SF buildings including a 6,000 SF data center and two server rooms for this Fortune 500 Firm.

EBAY BUILDING 17

San Jose, CA

Type: Campus building
Size: 189,590 SF

AlfaTech provided engineering design services for eBay's newest North Campus 5-story Building 17 in San Jose. This included a new core and shell and tenant improvements.

AlfaTech also prepared electrical infrastructure design for the installation of a roof-mounted 100kW photo-voltaic panel installation. Services included feeder and panel load calculations, code search, electrical plans and coordination with Owner, panel vendors and Contractor to integrate the PV panel system into the 5-story building's electrical power distribution and grounding systems. This project achieved LEED Gold.



RELEVANT PROJECTS

SEAGATE TECHNOLOGY CAMPUS

Fremont, CA

*Type: Campus
Size: 450,000 SF*

AlfaTech provided MEP, Technology, Lighting, and Commissioning services for this Seagate Media Research and Development Center (MRC2) in Fremont, California which is a 450,000 square foot facility that incorporates offices, labs, warehouse and prototype manufacturing. The facility includes 70,000 square feet of class 4 and class 5 clean room space on a custom four foot raised floor allowing for extensive utility distribution. Most of the occupied space is on the first level, except for a two story office space. There is a large second level the houses support infrastructure including electrical distribution, air handling units and technology support.



RELEVANT PROJECTS

DELTA PRODUCTS

Fremont, CA

Type: Campus
Size: 250,000 SF

The Delta Americas Headquarters is a three-story 250,000 SF campus consisting of private offices, administrative, open workspace, conference/auditorium facilities, kitchen/dining areas, labs, office and warehouse. AlfaTech provided sustainable mechanical electrical plumbing engineering design services for this project focusing on the client's desire to maximize natural ventilation and daylighting reduce water and energy consumption with a geothermal central plant and utilize radiant systems for primary space conditioning.

AlfaTech conducted extensive CFD modeling to assist with sizing and locating windows around the building and their integration into a thermal tower ventilation strategy. The project also encompasses a photovoltaic system to balance energy consumption and achieve Net Zero Energy.



RELEVANT PROJECTS

INTUIT CAMPUS CENTER – LEED GOLD

Mountain View, CA

Type: Campus
Size: 42,000 SF

AlfaTech was selected to provide mechanical, electrical, and plumbing engineering design services for a 42,000 SF office building conversion to a campus center for Intuit.

Amenities include: 15,000 SF cafeteria, 12,000 SF fitness center, 13,000 SF conference center, and 3,000 SF “innovation gallery.” Exterior improvements include a sports court and amphitheater.



RELEVANT PROJECTS

MOTOROLA MOBILITY – LEED SILVER

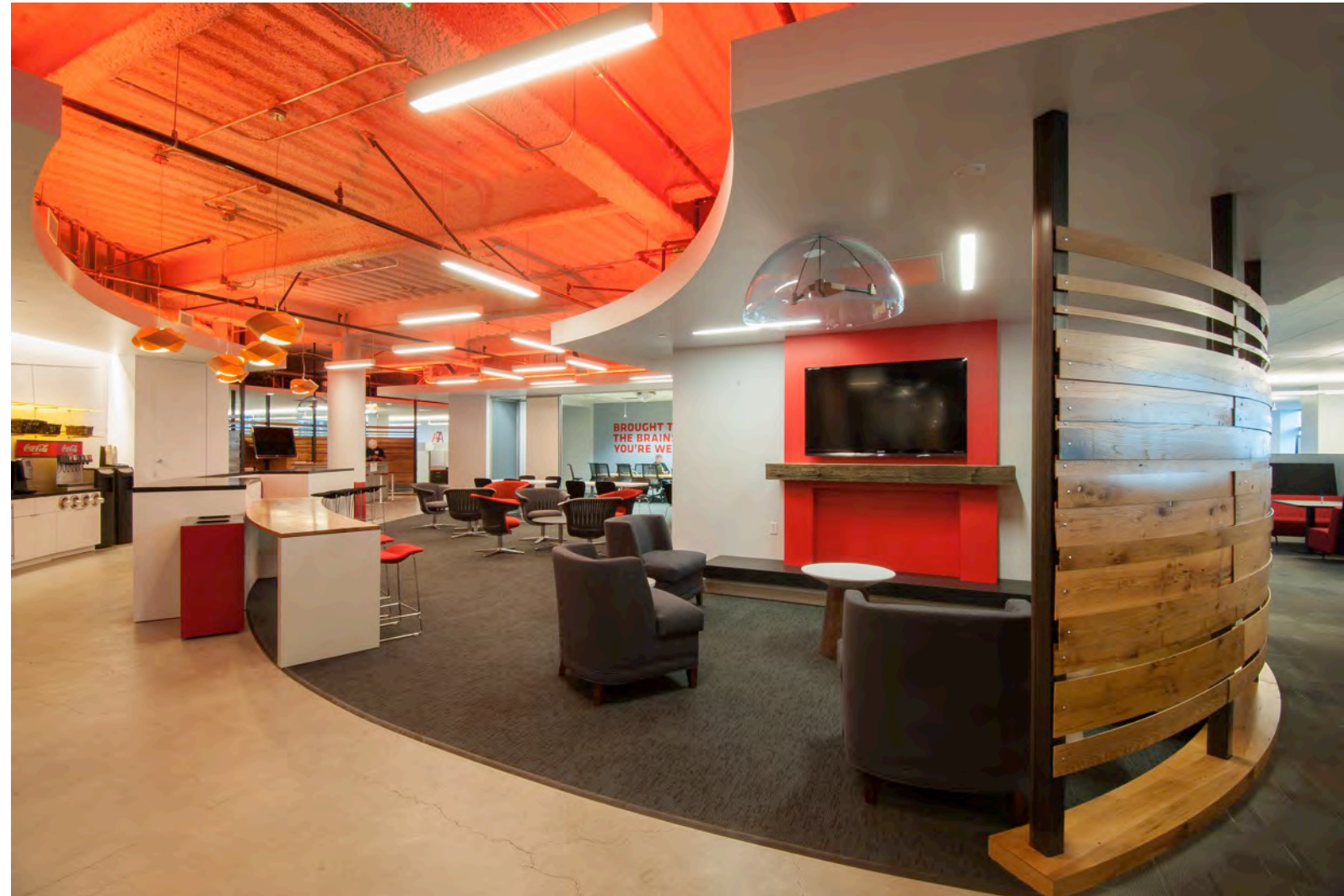
Moffett Towers, Sunnyvale, CA

Type: Office

Size: Three floors

AlfaTech provided MEP and fire protection engineering design for this 35,000 SF tenant improvement project. The project included TI's on the 6th-8th floors, and a new data center on the 1st floor.

Our technology team took the lead in providing due diligence of the existing facilities and transferred the information to the programming for the new building; making all necessary technical changes in order to improve the facility from operational and circulation point of view. The project achieved LEED Silver.



RELEVANT PROJECTS

SUNPOWER CORPORATION HEADQUARTERS

Richmond, CA

Type: Campus
Size: 80,000 SF

AlfaTech provided design-build services for the company's expansion into the historic Ford Plant in Richmond, CA. The new facility includes a 65,000 SF manufacturing plant, 180,000 SF office headquarters, and a 30,000 SF R&D facility. Key components of the project include R&D tool installations, manufacturing rack and assembly, and a roof PV plant. Provided project management services during lease and work letter scope definition negotiations with developer's design build team



RELEVANT PROJECTS

CONFIDENTIAL MUSEUM

Los Angeles, CA

Type: Office Building

Size: 360,000 SF

AlfaTech is providing full engineering design services for this highly confidential museum. This museum will contain theaters, educational spaces, dining areas, event spaces, display and archive areas etc. The MEP system consists of:

- Geothermal Loop
- Solar energy system
- Natural ventilation
- Displacement system
- LED lighting
- Spectrally selective glazing
- Grass and native plants
- Ecological ponds
- EV chargers
- Rainwater harvesting
- Gray water system
- Energy efficient HVAC system
- Hydronic bidirectional heating/cooling flooring systems



RELEVANT PROJECTS

SOKA UNIVERSITY OF AMERICA

Aliso Viejo, CA

Type: Campus Expansion

Size: 200,000 SF

The firm is providing mechanical, electrical, and plumbing design services for this university campus expansion project located near Irvine, CA.

The Engineering / Science / Lab / Admin Building will be 4 stories and approximately 100,000 SF with classrooms, administrative offices, and wet and dry labs. The Resident Housing will be 4 stories and comprised of approximately 75 to 80 rooms.

Both proposed projects will be designed to accommodate a LEED Gold Building Certification, and an exterior architectural design pallet that will respect the current design features, landscaping and cultural aspects of the campus.



RELEVANT PROJECTS

RIVERBED

San Francisco, CA

Type: Office Building

Size: 155,833 SF

AlfaTech provided mechanical, electrical and plumbing engineering design services for this project, which consisted of tenant improvement to floors 2 through 7 for a total of 155,833 SF.

The project included open office workstations, meeting rooms, conference rooms, and cafeteria with warm-up kitchen, IT rooms and support areas.



RELEVANT PROJECTS

PLAYGROUND GLOBAL

Palo Alto, CA

Type: Office / R+D

Size: 70,000 SF

AlfaTech provided mechanical, electrical plumbing and fire protection engineering design services for this project, which required expansion to house R+D labs, office space, open work plan, hoteling space as well as specialized meeting and privates spaces for employees. The original building consisted of existing 4-bay single story high bay warehouse.



ALFATECH

INNOVATIVE IDEAS | INTEGRATED SOLUTIONS | SUSTAINABLE PARTNERS

SAN FRANCISCO

One Post Street, Suite 2200
San Francisco, CA 94104

415.403.3000

LOS ANGELES

355 S. Grand Avenue, Suite 1605
Los Angeles, CA 90071

213.212.9860

SAN JOSE

1321 Ridder Park Drive, Suite 50
San Jose, CA 95131

408.487.1200