

2015
EXPEDITION+EL



Courtesy of Ford Motor Company



Go Further



Empowers you like never before.

The new 2015 Expedition and Expedition EL impress with sophisticated new exterior and interior styling, and a whole lot more. Featuring room for up to 8 and a wide array of new technologies, this Expedition lineup is designed to put you firmly in charge of every journey.

Expedition is more efficient than ever thanks to our state-of-the-art 3.5L EcoBoost® twin-turbocharged direct-injection engine and 6-speed SelectShift® automatic transmission.

With 55 more net hp and 55 more lb.-ft. of net torque than the outgoing engine, the EcoBoost contributes to more confident acceleration and passing performance.

Already proven in extensive durability testing equivalent to 10 years of use in harsh environments, as well as in real-world use on our popular F-150 pickup, the 3.5L EcoBoost engine empowers the new Expedition to take you and your active family further.



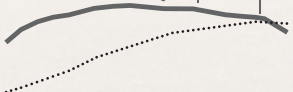
HILL START ASSIST



TWIN TURBOS



420 LB.-FT. OF NET TORQUE | 365 NET HP



King Ranch® EL. Bronze Fire Metallic.
King Ranch is a registered trademark of King Ranch, Inc.



Makes adventures easier.

Ready to turn your family's next road trip into a reality? So is the 2015 Expedition. With the progressive range select mode on its new 6-speed SelectShift® automatic transmission, the new Expedition takes your travels to a whole new level.

When starting up an incline, whether in Drive or Reverse, new hill start assist helps by momentarily maintaining brake pressure until the engine delivers enough torque to move you uphill.

Back up with clarity with the help of the standard rear view camera. A wide-angle full-color video image shows the vehicle's projected path. Center and distance guidelines are displayed on the screen in the center stack (shown at left on the new MyFord Touch®¹ screen).

A new off-road display on the vibrant 4.2" color LCD screen empowers you with key information, which includes the vehicle's pitch angle, bank angle and wheel direction.

For increased off-road confidence, Expedition 4x4s¹ get new Hill Descent Control,TM which helps maintain the vehicle's speed on steep declines so you can concentrate on maneuvering.



¹Available feature.

Responds to your commands.

Voice-activated Ford SYNC^{®1} delivers hands-free calls, Bluetooth[®]-streaming music and more with simple voice commands. Once paired, it can download contacts and play music from your smartphone. It can also access your MP3 player, USB or iPod.[®] Just touch a button on the steering wheel and say things like "Call: Ahmed at home" or "Play playlist: Jazz." SYNC. Say the word.

| SYNC

Add an 8" color LCD touch screen and much more when you opt for SYNC with MyFord Touch.^{®1,2} New on Expedition for 2015, this voice-activated system also includes knobs and buttons below the 8" screen.

Dual-zone electronic automatic temperature control (DEATC)² allows the driver and front-seat passenger to set their preferred temperature for their individual cabin comfort.

Platinum. Brunello luxury leather trim.

¹Driving while distracted can result in loss of vehicle control. Only use SYNC/MyFord Touch/other devices, even with voice commands, when it is safe to do so. Some features may be locked out while the vehicle is in gear. Not all features are compatible with all phones. ²Available feature. The Bluetooth word mark is a trademark of the Bluetooth SIG, Inc. iPod is a trademark of Apple Inc., registered in the U.S. and other countries.





Rewards your party of 8.

Restyled outside and in, the new Expedition lineup comfortably supports your family and friends from one memory-making destination to the next. Cooled 1st-row seats² and luxurious leather trim² are all standard on Limited, King Ranch[®] and Platinum. Choose the standard 2nd-row 40/20/40 split-fold seat with CenterSlide[®] functionality and reclining seat backs. Or go for roomy 2nd-row bucket seats² with a pass-through to the 3rd row. Either way, your 3rd-row riders will enjoy spacious leg room.

Up to 3,703 liters of cargo space (Expedition EL) and a flat load floor are easy to access with the power liftgate.²

Our PowerFold[®] 3rd-row seat² operates with push-button ease, allowing you to quickly switch from carrying people to transporting cargo and back again.

Pack more into Expedition EL thanks to its generous 1,207 liters of space behind the 3rd-row seat (over 2 times that of a regular length Expedition) and an adjustable Cargo Management System to help you keep it organized.

Platinum EL. Brunello luxury leather trim.

¹Cargo volume behind 3rd-row seat compared to regular length Expedition. ²Available feature.

Puts you firmly in charge.

You're always thinking ahead. Assessing the scene. Ready to adapt. Much like the advanced technology engineered into the new Expedition. It's designed with the goal of empowering you to live fully, sharing the best of life with your family and friends. And doing it all with confidence.

Enjoy its improved steering feel thanks to new electric power-assisted steering, which helps correct for road irregularities and smooths out minor vibrations.

Customize its suspension performance by setting the new continuously controlled damping¹ (CCD) to any of 3 drive modes (Normal, Comfort, Sport). Choose "Comfort" for a softer ride on uneven surfaces, or "Sport" for a more nimble, responsive driving experience. CCD is paired with new 22" polished aluminum wheels¹ on Limited, King Ranch[®] and Platinum.

Stay alert to traffic detected in blind spots as you drive forward, or traffic nearing either side of the vehicle as you slowly back up, thanks to new BLIS[®] (Blind Spot Information System) with cross-traffic alert.^{1,2,3} It helps warn you using lights embedded in the sideview mirrors.⁴

Add to your peace of mind with the knowledge that AdvanceTrac[®] with RSC[®] (Roll Stability Control™) is standard on every Expedition. Beneficial on all sorts of surfaces and in various weather conditions, it helps you avoid skidding and fishtailing.⁵



REVERSE & FORWARD¹  SENSORS

ADVANCETRAC  WITH RSC

3-ROW  SAFETY CANOPY

Platinum. Magnetic Metallic. Available equipment.

¹Available feature. ²Driver-assist features are supplemental and do not replace the driver's judgment. ³Availability varies by market. ⁴BLIS replaces standard integrated blind spot mirrors. ⁵Remember that even advanced technology cannot overcome the laws of physics. It's always possible to lose control of a vehicle due to inappropriate driver input for the conditions.

Expedition+EL Specifications



Standard Features

Mechanical

3.5L EcoBoost® V6 engine
6-speed SelectShift® automatic transmission with progressive range select
4-wheel independent suspension
4-wheel power disc brakes with Anti-Lock Brake System (ABS)
106-liter fuel tank capacity (127-liter on Expedition EL)
Easy Fuel® capless fuel filler
Electric power-assisted steering
Full-size spare wheel and tire
Hill start assist
Non-limited-slip rear axle – 3.15:1 ratio (Expedition 4x2 only); 3.31:1 ratio (Expedition 4x4 and Expedition EL 4x2 only); 3.73:1 ratio (Expedition EL 4x4 only)
Rear-wheel drive (RWD)
Skid plates (front, transfer case and fuel tank)

Seating

1st-row bucket seats
2nd-row 40/20/40 split-fold seat with CenterSlide® (slide-forward feature for center section); reclines and folds flat to floor in cargo mode

Interior

Assist handles (2 in 1st row, 2 in 2nd row and 1 for liftgate)
Auto-dimming rearview mirror
Auxiliary audio input jack
Auxiliary rear climate control
Cargo Management System (Expedition EL only)
Carpeted floor mats in 1st and 2nd rows
Compass

Cruise control

Cupholders (9)
Floor console with storage bin, coin holder, 4 cupholders, 2 powerpoints, auxiliary rear audio and climate controls, and pen holder
Leather-wrapped steering wheel
Overhead console with map lights, single sunglasses holder, conversation mirror and rear quarter window switches
Power door locks
Power windows with one-touch-up/-down driver's side window feature
Powerpoints (3)
Rear floor air vents
Rear view camera
Smoker's Package
Sun visors with illuminated vanity mirrors
Truck Apps

Exterior

Automatic headlamps with rainlamp
Front tow hooks
Heavy-Duty Trailer Tow Package includes Class IV hitch receiver, 7-/4-pin connectors, heavy-duty auxiliary transmission oil cooler, heavy-duty radiator, electronic brake wiring kit and integrated trailer brake controller
SecuriCode™ keyless entry keypad
Skid plates (4x4, front, transfer case and fuel tank)
Windshield wipers – Front: 2-speed variable-intermittent; rear: 2-speed intermittent with washer

Safety & Security

3-point safety belts for all seating positions
AdvanceTrac® with RSC® (Roll Stability Control™)
Belt-Minder® front safety belt reminder
Child-safety rear door locks
Dual-stage front airbags ² ; safety belt pretensioners, safety belt energy-management retractors, safety belt usage sensors, driver's seat position sensor, crash severity sensor and restraint control module
Front-seat side airbags ²
Height-adjustable shoulder belts for 1st row
LATCH – Lower Anchors and Tether Anchors for Children on rear-outboard seat positions
MyKey®
Perimeter alarm
Safety Canopy® System with 3-row side-curtain airbags ² and rollover sensor
SecuriLock® Passive Anti-Theft System
Side-intrusion door beams
SOS Post-Crash Alert System™
Tire Pressure Monitoring System (excludes spare)
Trailer sway control

Engine & Dimensions

Net Horsepower, Net Torque & Fuel Economy (L/100 km)

3.5L EcoBoost V6	
365 net hp @ 5,000 rpm	
420 lb.-ft. of net torque @ 2,250 rpm	
6-speed automatic	
Expedition	
4x2	14.7 city/10.7 hwy ³
4x4	15.7 city/11.8 hwy ³
Expedition EL	
4x2	15.7 city/11.2 hwy ³
4x4	16.8 city/11.8 hwy ³

Exterior (mm)	Expedition/EL
	4x2 (4x4)
Wheelbase	3,022/3,327
Length	5,242/5,618
Height – Excluding options	1,960/1,989
Width – Excluding mirrors	2,001/2,001
Width – Including mirrors	2,331/2,331
Width – Mirrors folded	2,024/2,024
Min. running ground clearance	211/203
Liftover height	866 (864)/866
Overhang – Front	995/995
Overhang – Rear	1,226/1,298
Ramp breakover angle	18.5° (16.8°)/16.2° (15.7°)
Angle of approach	22.4° (22.2°)/22.5° (22.5°)
Angle of departure	21.8° (21.7°)/20.4° (20.3°)

Interior (mm)

Expedition/EL	4x2 (4x4)
1st Row	
Head room	1,004
Shoulder room	1,607
Leg room (max.)	1,093
2nd Row	
Head room	1,009
Shoulder room	1,619
Leg room	994
3rd Row	
Head room	974/966
Shoulder room	1,318/1,704
Leg room	957

Capacities (liters)

Passenger volume	4,515
Cargo volume behind 1st row	3,065/3,703
Cargo volume behind 2nd row	1,557/2,420
Cargo volume behind 3rd row	528/1,207
Fuel tank	106/127

Maximum Loaded Trailer Weight (kg)⁴

4x2 Class IV	4,173/4,037
4x4 Class IV	4,082/3,946

¹Availability varies by market. ²Always wear your safety belt and secure children in the rear seat. ³Based on 2014 U.S. EPA estimates. Actual mileage will vary. ⁴Maximum weights shown are for properly equipped vehicles with required equipment and a 68-kg driver. Weight of additional options, equipment, passengers and cargo must be deducted from this weight. For additional information, see your Ford Dealer.

XL & XLT



XL EL. Tuxedo Black.

XLT. Ebony leather trim.¹ Available equipment.

XLT. CenterSlide[®] 2nd-row seat. Ebony leather trim.¹

XLT. Power moonroof.¹

XL

Equipment Group 101A

Includes all standard features, plus:

Seating

3rd-row 60/40 split-fold flat-to-floor bench seat

Interior

AM/FM stereo with single-CD player, MP3 capability and 6 speakers

Ford SYNC[®] voice-activated, in-vehicle connectivity system with 4.2" color LCD displays in instrument cluster and center stack, and media hub with auxiliary audio input jack and USB port

Manual-tilt/-telescoping steering column

Power-adjustable pedals

Single-zone electronic automatic temperature control

Exterior

17" aluminum wheels

Black door handles

Black, power, heated sideview mirrors with security approach lamps

Black roof-rack side rails with black crossbars

Black running boards

Chrome grille bars with Black-painted accents

Halogen fog lamps

Quad-reflector headlamps with blackout treatment

Available Options & Package

3.73 non-limited-slip rear axle (all non-EL and EL 4x2 only)

All-weather floor mats in 1st and 2nd rows

Fleet Convenience Package includes power-adjustable pedals and Reverse Sensing System

Body-color lower bodyside moldings, wheel-lip moldings and bumpers

Bright exhaust tip

Chrome door handles

Chrome grille bars with Magnetic-painted accents

Chrome liftgate appliqué with Magnetic-painted accent bar

LED fog lamps

Reverse Sensing System

Available Equipment Groups

Equipment Group 201A – 1st-row bucket seats with 10-way power driver's seat, including power lumbar + 6-way power front-passenger seat + PowerFold[®] 3rd-row seat + power liftgate

Equipment Group 202A – Includes select content of 201A + heated and cooled front seats with 10-way power passenger seat + leather-trimmed 1st- and 2nd-row seats + power-tilt/-telescoping steering column + memory feature for driver's seat, power-adjustable pedals, steering column and sideview mirrors + Remote Start System + dual-zone electronic automatic temperature control + SYNC with MyFord Touch[®] with two 4.2" LCD configurable displays in instrument cluster; 8" LCD touch screen in center stack; and media hub with 2 USB ports, SD card reader and an audio input jack + Audio System from Sony[®] with subwoofer + leather-wrapped shift knob + ambient lighting + sideview mirror integrated turn signal indicators

Available Options

20" bright-machined aluminum wheels with Magnetic-painted windows (requires 201A or 202A)

2nd-row bucket seats (requires 201A or 202A and leather seating)

3.73 non-limited-slip rear axle (all non-EL and EL 4x2 only)

10-way power front-passenger seat (optional on 201A; standard on 202A; requires leather seating)

All-weather floor mats in 1st and 2nd rows

BLIS[®] (Blind Spot Information System) with cross-traffic alert² (requires 202A)

Control Trac[®] 4-Wheel-Drive (4WD) System (includes Hill Descent Control[™])

Dual headrest DVD by INVISION^{™3} (requires 202A)

Leather-trimmed 1st- and 2nd-row seats (optional on 201A; standard on 202A)

Navigation Radio System⁴ (requires 202A)

Power moonroof

XLT

Equipment Group 200A

Includes select XL features, plus:

Interior

Power rear quarter windows

Power-adjustable pedals

Steering wheel-mounted audio controls

Sun visors with illuminated vanity mirrors

Exterior

18" machined aluminum wheels



17" Aluminum
Standard on XL



18" Machined Aluminum
Standard on XLT



20" Bright-Machined Aluminum
with Magnetic-Painted Windows
Optional on XLT

¹Available feature. ²Availability varies by market. ³Ford Licensed Accessory. ⁴Map availability varies by market. INVISION is a trademark of VOXX International Corporation. Sony is a registered trademark of the Sony Corporation.

Limited

Equipment Group 300A

Includes select XLT features, plus:

Mechanical

Passive entry with push-button start

Remote Start System

Seating

1st-row, 10-way power, heated and cooled bucket seats, including power lumbar and recline with driver's memory feature

Leather trim with perforated inserts on 1st- and 2nd-row seats

PowerFold® 3rd-row seat

Interior

Audio System from Sony® with subwoofer

Compass display

Dual-zone electronic automatic temperature control

Leather-wrapped steering wheel and shift knob

Power-adjustable pedals with memory

Power-tilt/-telescoping steering column

SYNC® with MyFord Touch® with two 4.2" LCD configurable displays in instrument cluster; 8" LCD touch screen in center stack; and media hub with 2 USB ports, SD card reader and an audio input jack

Woodgrain accents on center console, switch panels and instrument panel

Exterior

20" polished aluminum wheels

Body-color, power-adjustable/-folding, heated sideview mirrors with auto-dimming driver's side, blind spot mirrors, security approach lamps, integrated turn signal indicators and memory

Body-color running boards

Chrome accent bar on lower front bumper

Chrome grille bars with Thunderstorm accents

Chrome liftgate appliqué with Thunderstorm-painted accent bar

Chrome roof-rack side rails with black crossbars

Forward Sensing System

Halogen projector headlamps

Power liftgate

Rain-sensing windshield wipers

Available Equipment Group

Equipment Group 301A – Power moonroof + power-deployable running boards + Navigation Radio System¹

Available Options

22" polished aluminum wheels (includes continuously controlled damping [CCD] suspension)

2nd-row bucket seats

3.73 non-limited-slip rear axle (all non-EL and EL 4x2 only)

All-weather floor mats in 1st and 2nd rows

BLIS® (Blind Spot Information System) with cross-traffic alert²

Control Trac® 4-Wheel-Drive (4WD) System (includes Hill Descent Control™)

Dual headrest DVD by INVISION™³

Navigation Radio System¹ (300A only)

Power-deployable running boards (300A only)

Power moonroof (300A only)



20" Polished Aluminum
Standard



22" Polished Aluminum
Optional

Dune leather trim with perforated inserts. Ambient lighting. Available equipment.

1st-row, 10-way power, heated and cooled bucket seats.

Passive entry with push-button start.

Center console storage with media hub.

Power-adjustable pedals with memory.

¹Map availability varies by market. ²Availability varies by market. ³Ford Licensed Accessory.

King Ranch®¹



Mesa Brown leather trim seating with perforated inserts. 2nd-row bucket seats.² Available equipment.

Mesa Brown leather and woodgrain trim. Available equipment.

King Ranch exterior badging.

King Ranch logo embroidered on 1st- and 2nd-row carpeted floor mats.

Equipment Group 401A
Includes select Limited features, plus:

Seating

Mesa leather trim with perforated inserts on all 3 rows of seating

Interior

1st- and 2nd-row carpeted floor mats with embroidered King Ranch logo
Mesa Brown leather trim on steering wheel insert, shift knob, center console lid and door-panel inserts
Navigation Radio System³
Power moonroof

Exterior

20" bright-machined aluminum wheels with Caribou-painted pockets and King Ranch center caps
BLIS® (Blind Spot Information Center) with cross-traffic alert¹
Caribou lower bodyside moldings, wheel-lip moldings and bumpers
Chrome grille bars with Caribou accents
Chrome liftgate appliqué with Caribou-painted accent bar
Chrome, power-adjustable/-folding, heated sideview mirrors with auto-dimming driver's side, security approach lamps, integrated turn signal indicators and memory
King Ranch logo on front fender and liftgate
Power-deployable running boards

Available Options & Package

22" polished aluminum wheels with King Ranch center caps (includes continuously controlled damping [CCD] suspension)
2nd-row bucket seats
3.73 non-limited-slip rear axle (all non-EL and EL 4x2 only)
All-weather floor mats in 1st and 2nd rows
Control Trac® 4-Wheel-Drive (4WD) System (includes Hill Descent Control™)
Dual headrest DVD by INVISION™⁴
Monotone Appearance Package includes monotone exterior paint and monotone power-deployable running boards



20" Bright-Machined Aluminum with Caribou-Painted Pockets and King Ranch Center Caps
Standard



22" Polished Aluminum with King Ranch Center Caps
Optional

¹Availability varies by market. ²Available feature. ³Map availability varies by market. ⁴Ford Licensed Accessory.

Platinum¹

Equipment Group 600A

Includes select Limited features, plus:

Seating

Luxury leather trim with perforated inserts on 1st- and 2nd-row seats with Agate Tuxedo stripes, stitching and embroidered "PLATINUM" logos

Interior

1st-row door-sill scuff plates with "PLATINUM" logo

Door panel inserts and armrests with Agate Tuxedo stripes and stitching

Leather-wrapped steering wheel with micro-perforated leather upper insert, Agate stitching and chrome accents

Luxury leather trim on center console armrest with Agate stitching

Navigation Radio System²

Power moonroof

Exterior

20" polished aluminum wheels

BLIS[®] (Blind Spot Information System) with cross-traffic alert¹

Chrome front tow hooks

Chrome liftgate appliqué with satin-aluminum accent bar

Chrome, power-adjustable/-folding, heated sideview mirrors with auto-dimming driver's side, security approach lamps, integrated turn signal indicators and memory feature

"PLATINUM" badging on lower front doors

Polished, stainless power-deployable running boards

Polished stainless rear quarter panel beltline moldings

Satin-aluminum finish on liftgate handle

Satin-aluminum grille bars with chrome accents

Available Options

22" polished aluminum wheels (includes continuously controlled damping [CCD] suspension)

2nd-row bucket seats

3.73 non-limited-slip rear axle (all non-EL and EL 4x2 only)

All-weather floor mats in 1st and 2nd rows

Control Trac[®] 4-Wheel-Drive (4WD) System (includes Hill Descent Control[™])

Dual headrest DVD by INVISION^{™3}



20" Polished Aluminum
Standard



22" Polished Aluminum
Optional

Brunello luxury leather trim with perforated inserts. Available equipment.

BLIS (Blind Spot Information System) with cross-traffic alert.¹

Power-deployable running boards with polished stainless finish.

1st-row, 10-way power, heated and cooled bucket seats.

Chrome liftgate appliqué with satin-aluminum finish accent bar.

¹Availability varies by market. ²Map availability varies by market. ³Ford Licensed Accessory.

Exteriors This helpful guide is intended for selecting an exterior color – not features, options or a trim level.



Oxford White



White Platinum Metallic Tri-coat



Bronze Fire Metallic



Ruby Red Metallic Tinted Clearcoat



Blue Jeans Metallic



Green Gem Metallic



Ingot Silver Metallic



Magnetic Metallic

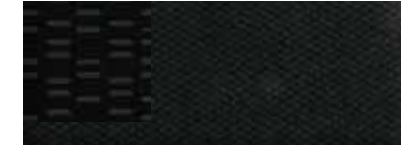


Tuxedo Black Metallic

Interiors



1 Dune Cloth



2 Ebony Cloth



3 Dune Leather



4 Ebony Leather



5 Dune Leather with Perforated Inserts



6 Ebony Leather with Perforated Inserts



7 Mesa Brown Leather with Perforated Inserts



8 Ebony Luxury Leather with Perforated Inserts and Agate Tuxedo Stripe



9 Brunello Luxury Leather with Perforated Inserts and Agate Tuxedo Stripe

Exteriors	XL		XLT				Interiors Limited		King Ranch®	Platinum	
	1	2	1	2	3	4	5	6			5
Oxford White	1	2									
White Platinum Metallic Tri-coat ¹			1	2	3	4	5	6	5	6	7
Bronze Fire Metallic	1	2	1	2	3	4	5	6	5	6	7
Ruby Red Metallic Tinted Clearcoat ¹	1	2	1	2	3	4	5	6	5	6	7
Blue Jeans Metallic	1	2	1	2	3	4	5	6	5	6	7
Green Gem Metallic	1	2	1	2	3	4	5	6	5	6	7
Ingot Silver Metallic	1	2			2	4	6		5	6	7
Magnetic Metallic	1	2	1	2	3	4	5	6	5	6	7
Tuxedo Black Metallic	1	2	1	2	3	4	5	6	5	6	7

3, 4 Optional on XLT (requires Equipment Group 201A) 5, 6 Available on XLT (requires Equipment Group 202A)

¹Additional charge.

Colors are representative only. See your dealer for actual paint/trim options.



QUALITY, GREEN, SAFE & SMART.

me.ford.com



Limited EL in Ruby Red Metallic Tinted Clearcoat customized with smoked hood and side window deflectors, flat splash guards and trailer towing accessories

Cargo area protector

All-weather floor mats

Keyless entry keypad

Illuminated door-sill plates

Exterior

- Full vehicle covers¹
- Hood protector¹
- Locking fuel plug
- Racks and carriers¹
- Wheel lock kits

Interior

- Cargo organizers and protectors
- Carpeted floor mats
- Interior light kit
- In-vehicle safe¹
- Leather-trimmed interior seating¹

Electronics

- Portable DVD rear-seat entertainment systems¹
- Warning sensor systems¹

Ford Genuine Parts & Service. Keep your vehicle in optimum operating condition with scheduled maintenance service. Ford and Lincoln Dealership technicians know your vehicle inside and out. They are continuously trained by Ford Motor Company and the parts they use are specifically designed for your vehicle. □ Ford Original Accessories will be warranted for whichever provides you the greatest benefit: 24 months/unlimited distance, or the remainder of your Bumper-to-Bumper 3-year/60,000-km New Vehicle Limited Warranty. Ford Licensed Accessories (FLA) are warranted by the accessory manufacturer's warranty. FLA are designed and developed by the accessory manufacturer and have not been designed or tested to Ford Motor Company engineering requirements. Contact your Ford Dealer for details and/or a copy of all limited warranties.

Comparisons based on competitive models (class is Large Utilities), publicly available information and Ford certification data at time of printing. Vehicles may be shown with optional equipment. Features may be offered only in combination with other options or subject to additional ordering requirements/limitations. Dimensions shown may vary due to optional features and/or production variability. Information is provided on an "as is" basis and could include technical, typographical or other errors. Ford makes no warranties, representations, or guarantees of any kind, express or implied, including but not limited to, accuracy, currency, or completeness, the operation of the information, materials, content, availability, and products. Ford reserves the right to change product specification, pricing and equipment at any time without incurring obligations. Your Ford Dealer is the best source of the most up-to-date information on Ford vehicles.

GO FURTHER



إلى أبعد مدى