



Canadian Tire Dealers Association

Annual Convention 2020

EDMONTON
ORIGINAL SINCE
WAY
BACK



World Trade Centre
9990 Jasper Avenue,
5th Floor
Edmonton, Alberta
Canada T5J 1P7
TEL: (780) 917-7480
FAX: (780) 425-4715
Edmonton Tourism
is a division of
Edmonton Economic
Development Corporation

November 13, 2015

Julie Ann Vespi
171 Ambassador Dr
Mississauga, ON L5T 2J1
CANADA

Re: Canadian Tire Dealers Association Annual Convention 2020

Dear Julie,

On behalf of Edmonton Tourism, our industry partners, Travel Alberta and the City of Edmonton, it is our pleasure to invite the Canadian Tire Dealers Association to Edmonton, a vibrant urban centre in the heart of the wilderness. Alberta's capital city is ready to welcome your guests, and you will find that this proposal creates the framework for a truly unforgettable event.

There's a uniqueness to how we do ordinary things in Edmonton, a region home to over one million friendly and welcoming people. Education might be the goal of your conference, but it's the experience of the destination that attendees talk about for years to come. After a day of inspiration at your event, the list of truly awesome things to do Edmonton will leave your delegates wishing they had more free time. Alberta is the only province in Canada without a provincial sales tax—benefitting your core budget, and the wallets of your delegates looking to shop and explore Edmonton—so every delegate gets more from their time in Edmonton!

Edmonton has everything you need to host a conference of any size. As your central point of contact, we have the experience and track record to deliver an amazing event every time. In this document you will find information on accommodations, meeting venues, and additional tours and details that will result in an especially memorable event.

Julie, the City of Edmonton is excited by the opportunity to play host to your delegates in 2020 and we look forward to welcoming you to our city. You have our commitment, and that of our industry partners and citizens, to create an experience that will leave your delegates saying, "Wow...Edmonton was nothing like I've ever experienced before!" See for yourself—visit www.ExploreEdmonton.com to take a peek at Edmonton's authentic experiences.

Kind regards,

Daniela Stucki
Business Development Manager, Meetings & Conventions
Direct 780-917-7621
Mobile 780-901-8957
Email: dstucki@edmonton.com



Accommodation

EDMONTON
ORIGINAL SINCE WAY BACK



Canadian Tire Dealers Association 2020 Room Block Overview

Hotel	Peak Rooms	Rate* (From)
Chateau Lacombe	225	\$169
Coast Edmonton Plaza Hotel	150	\$139
Courtyard by Marriott	120	\$219
Delta Edmonton Centre Suite	25	\$169
Fairmont Hotel Macdonald	100	\$249
Matrix Hotel	100	\$170
Nova Hotels	265	\$110
Sutton Place Hotel	175	\$159
Westin Hotel	300	\$249

All rates are quoted as net non-commissionable

Please note that the rate provided here is the rate that the majority of your room block has been quoted at. Please review hotel's individual proposal included in this document for additional room category rates.



CHATEAU
LACOMBE
HOTEL

Chateau Lacombe Hotel
10111 Bellamy Hill
Edmonton, AB T5J 1N7
Phone: (780) 420-8364
Fax: (780) 420-8379
sales@chateaulacombe.com
www.chateaulacombe.com

Proposal for Canadian Tire Dealers Association

November 10, 2015

Thank you for considering the **Chateau Lacombe Hotel** for your event accommodation requirements. We look forward to the opportunity of hosting you and your attendees during the CTDA Annual Convention.

The guest rooms required for this event match perfectly with our availability over your preferred dates. This proposal is currently on first option basis until **March 31, 2017**. Below is an outline of our guestroom rates. Available to you upon request is our hotel meeting space map, catering guide and audio visual pricing.

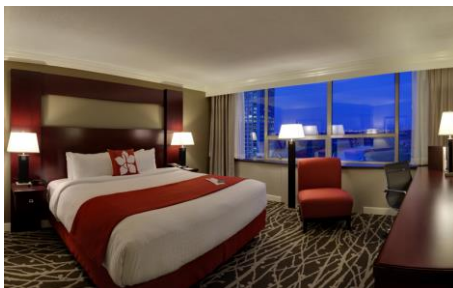
About our Hotel

Located in the heart of downtown Edmonton, the **Chateau Lacombe Hotel** is an iconic landmark, offering spectacular panoramic views of the North Saskatchewan River valley.

The hotel is located by the Edmonton Arts District, City Centre, and numerous avenues of entertainment. A quick convenient walk to the Shaw Conference Centre, makes us your ideal choice.

Hotel Highlights

- 307 guest rooms, including 15 Jr. Suites, 66 Newly Renovated Concierge Level rooms and Executive Suites, with River Valley views and private balconies.
- Legendary roof-top revolving restaurant, LaRonde, offering exceptional cuisine for dinner and Sunday Brunch.
- Complimentary Business and Fitness Centre(s)
- Underground Parking Garage with over 600 stalls.
- 14,000 square feet of flexible meeting space



"UNIQUE BY NATURE"

Room Block

ARRIVAL							DEPARTURE			
Monday, September 21, 2020							Wednesday, September 30, 2020			
ROOM TYPE										
	Mon	Tue	Wed	Thu	Fri	Sat	Sun	Mon	Tue	
	09/21	09/22	09/23	09/24	09/25	09/26	09/27	09/28	09/29	
Standard King	50	75	100	100	100	100	100	50	10	
Standard Double	-	48	98	98	98	98	98	-	-	
Concierge King	-	25	25	25	25	25	25	-	-	
Junior Suite	-	2	2	2	2	2	2	-	-	*UPGRADES
Total Rooms	50	150	225	225	225	225	225	50	10	TOTAL ROOMS: 1385
2020 RATES										
	Single	Double	Triple	Quad						
Standard King	169.00	169.00	184.00	199.00						
Standard Double	169.00	169.00	184.00	199.00						
Concierge King	209.00	209.00	224.00	239.00						
Junior Suite	229.00	229.00	244.00	259.00						

Total Room Nights: 1385**Additional Room Types Available**

Room	Rate
Concierge King	\$209.00
Jr. Suite	\$229.00
Executive Suite	\$259.00
Royal Parlour and Suite	\$749.00

These rates are net of taxes. Hotel's room rates are subject to applicable provincial and local taxes (currently 9%) in effect at the time of check-in. Room rates are also subject to the Destination Marketing Fee of 3%.

Concierge Guest Rooms:

Enjoy our Concierge Guestrooms that offer a higher form of business travel service by including the following amenities:

- Private and exclusive concierge lounge: Open 7 days a week
- Daily deluxe continental breakfast 6:30am to 11:00am
- Daily complimentary canapés, cocktails, and beverages 5:00pm to 8:00pm
- Telus Optic TV with 15 mb dedicated internet access per room. On demand movies online with credit card. HDMI and a USB Port
- Turndown service upon request
- 42 inch LED HD TV
- Personal Keurig coffee machine
- Bedside docking station
- Mother Earth Essentials: upgraded amenities (including mouthwash, shower gel and vanity kit)
- Hair dryer and robe(s)

Concessions (based on 85% guestroom pickup)

- 2 Complimentary Suite Upgrades at Standard rate
- 2 Complimentary VIP Amenity Gifts upon arrival

Other Information

- 1 in 50 Complimentary Rooms Ratio – Cumulative
- Extended Rates: 3 days pre and post
- Complimentary High Speed Internet in all guestrooms

"UNIQUE BY NATURE"

We appreciated your interest in the Chateau Lacombe Hotel. Please contact me directly at **780-420-8363**, fax 780-420-8379 or use my e-mail address: **sschurer@chateaulacombe.com**. I would love the opportunity to discuss your program further.

Best Regards,

Sherri Schurer
Sales Manager

Chateau Lacombe Hotel

10155 105th St, Edmonton, AB T5J 1E2

Telephone: 780.423.4811

Fax: 780.423.3204

coasthotels.com

GROUP ACCOMMODATION PROPOSAL



November 9, 2015

Dear Canadian Tire Dealers' Association

RE: September 21 – 27, 2020

Thank you for considering the Coast Edmonton Plaza Hotel to welcome your delegates.

Our downtown Edmonton hotel boasts 300 newly renovated guest rooms (completion date September 2015).



GUEST ROOMS:

The Coast Edmonton Plaza Hotel's newly renovated guest rooms provide a 32" LCD television, complimentary Starbucks coffee, Tazo teas, iron, ironing board, **free WiFi**, and triple-sheeted bedding.

Room Category	Sept 22	Sept 23	Sept 24	Sept 25	Sept 26	Sept 27
Run of House	10	50	150	150	150	150

2016 Rates	Single/Double Rate
Comfort 1 King - Room only	\$139
Superior 1 King & breakfast	\$159
Premium 1 King & breakfast & parking	\$179

Rates for 2020 will be confirmed one year prior to arrival. First night to be charged at time of booking.

Rates quoted are net non-commissionable in Canadian funds and are subject to 5% GST, 3% Destination Marketing Fee and 4% Provincial Levy (12.27% total taxes).

Sincerely, 
Monica Zeniuk, 7 Year Platinum Awarded Sales Manager
Direct: 780-423-7531 m.zeniuk@coasthotels.com

ncial





Thank you for considering the Courtyard by Marriott Edmonton Downtown as a host hotel for the Canadian Tire Dealers Association- 2020, I am pleased to send you our proposal.

I welcome the opportunity for you and your delegates to experience the new state-of-the-art lobby at the Courtyard by Marriott Edmonton Downtown, Edmonton's foremost business-class hotel, specializing in casual riverside luxury. Our hotel features 177 tastefully appointed, newly renovated guestrooms with free Wi-Fi and a mini-fridge for your convenience. Panoramic views of the river valley and our downtown business district add to the excitement of this magnificent Edmonton hotel. Our award winning patio provides a relaxing atmosphere with breath taking views of Edmonton's river valley. An excellent choice among Edmonton restaurants, our Riverside Bistro serves delicious breakfast, lunch and dinner.

Our Meeting Rooms offer a spectacular view of the river valley with floor-to-ceiling windows. Facilitating groups of 2 - 120 people, our Meeting Rooms are designed to ensure that every need is met. This Edmonton hotel is conveniently located next to Shaw Conference Centre and other Edmonton attractions. Among Edmonton hotels and meeting facilities the newly renovated Courtyard by Marriott Edmonton Downtown stands above the rest!

Below is the room block and rates we would extend to your event for the indicated dates:
Sept21-Sept30' 2020.

	Mon09/2 1	Tue09/2 2	Wed09/2 3	Thu09/2 4	Fri09/25	Sat09/26	Sun09/2 7	Mon09/2 8	Tue09/2 9
Run of House	50	120	120	120	120	120	120	50	10

Room	Single Rate
Run of House	219

The above mentioned rates are based in the current year (2015). Rates will be confirmed 12 months prior to your arrival with an expected increase of no more than 5% per annum.

Function Information Agenda

We are not currently holding any meeting space or guestrooms for your event. If this proposal meets with your approval, and you would like to confirm acceptance of this offer, please contact me and I will forward a formal agreement to you.

Sincerely,

Santosh Padukone

Guest Services Supervisor / Sales

Courtyard by Marriott Edmonton

99th & Jasper Ave, Edmonton AB, T5J 2E7

Direct Line: 780-945-4746

Facsimile: 780-945-4731

Email: santosh.padukone@concordhotels.com; naina.hardat@concordhotels.com

Courtyard by Marriott Edmonton Features:

- Convenient downtown location, within walking distance of:
 - Edmonton City Centre Mall and Movie Theatres
 - River Valley trail system for walking, jogging or biking
 - LRT (Subway) System, connecting you to Commonwealth Stadium and Edmonton's all purpose sports and events arena, Rexall Place
 - The Citadel Theatre
 - Winspear Centre
 - Canada Place Federal Government Building

- ¼ of a block from the SHAW Conference Centre.
- The Courtyard by Marriott finished a 100% renovation in March 2012 with all Guest rooms, Meeting rooms and public areas being done. Guest rooms include mini fridges, 32" Flat screen T.V.s, On-Command Movies, iron and ironing board, complimentary coffee & tea.
- 24-hour Fitness Centre
- Heated Underground Valet Parking
- 24-hour Business Centre with complimentary High-Speed Internet
- Full Service breakfast, lunch and dinner is served in the hotel's restaurant, the Riverside Bistro with views of Edmonton's spectacular River Valley
- The Riverside Bistro's award winning patio has an unobstructed view of Edmonton's River Valley

DELTA
meeting
MAESTROS



DELTA EDMONTON CENTRE SUITE HOTEL

PROPOSAL

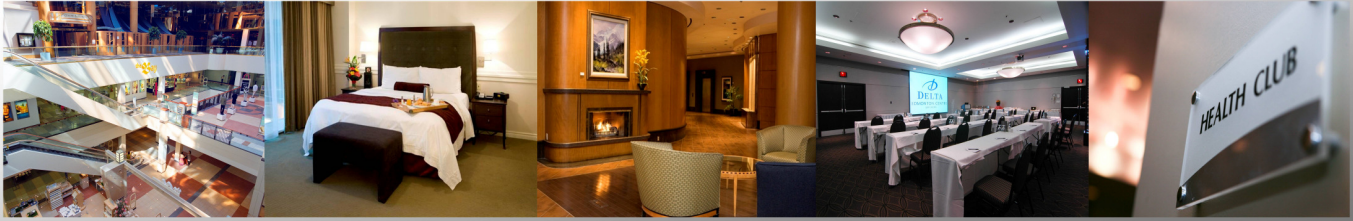
TO

Client

Canadian Tires Dealers Association


DELTA
EDMONTON CENTRE
SUITE HOTEL

Your room is ready



November 13, 2015

RE: Canadian Tires Dealers Association

Dear Client,

Thank you for your interest in the Delta Edmonton Centre Suite Hotel. We are very pleased with the opportunity to present our proposal outlining accommodation and meeting space requirements. Should this meet with your approval; a contract will be forwarded for your signature.

Please note that all outlined space and guestrooms will be held for you until 12-18-2015

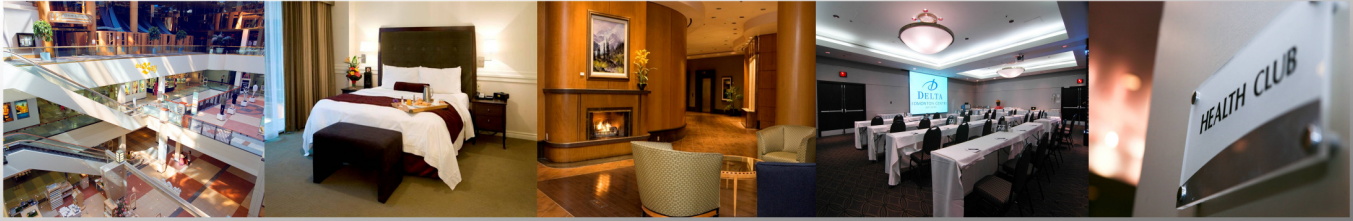
The Delta Edmonton Centre Suite Hotel is ideally located in downtown Edmonton, and is connected to over 100 stores and services, Empire Theatres, with access by indoor walkways to 4 other shopping centres, the Shaw Conference Centre, City Hall, Canada Place, Commerce Place, Manulife Place and 17 other office towers.

We look forward to welcoming your group and to working with you to ensure the success of your event.

Kind regards,

Monica Phillips
Reservations/Revenue Manager
Delta Edmonton Centre Suite Hotel
10222 102 Street
Edmonton, Alberta T5J 4C5
Phone: 780-423-9292
Fax: 780-428-1566
Email: monica.phillips@deltahotels.com

For more about our hotel, please go to our website: www.deltaedmontoncentre.com
or view our Dynamic E-mercial:
<http://bit.ly/No1bDM>



ABOUT DELTA HOTELS

With a diversified portfolio of more than 44 city centre and airport hotels and resorts, Delta Hotels is the leading first-class hotel management company in Canada.

Recognized as one of the best meeting facilities in Canada (M&IT Magazine, 2003) and honored with numerous AAA/CAA four diamond awards for service and fine dining, we have an enviable 40-year record of service excellence and hospitality.

ABOUT DELTA MEETING MAESTROS

Backed by a series of key commitments Delta Hotels' new national meeting program responds to the specific needs of meeting planners. From PCMA-trained conference service managers and a 24-hour response time to proposals to simplified contracts and invoices and unique ideas for every meeting, Delta Meeting Maestros is committed to your company's success.

ABOUT DELTA EDMONTON CENTRE SUITE HOTEL

The Delta Edmonton Centre Suite Hotel is ideally located in the heart of downtown Edmonton City Centre Shopping complex. With over 100 stores and services, 9 Empire Theatres, and pedway connections to 4 other shopping centres, the Shaw Conference Centre, and 17 office towers, the Delta Edmonton Centre Suite Hotel is attractive for both business and convention travelers alike.

With over 12,000 square feet of meeting space, our expert sales and conference services team offers a one-stop shopping experience, from small intimate gathers to a 350 person banquet.

DELTA "GREENS" PROGRAM: Corporate Social Responsibility

Delta Hotels is one of the Green 30. Within the 2011 Best Employers (which Delta is a part of) Delta scored exceptionally well in the area of responsible environmental practices which is why we were named to the list

National Brand Standards across the chain include our towel and sheet change program, reusable guest newspaper bags, compact florescent light bulbs, recycling containers in all guestrooms and 100% recycled room key cards are just a few of the initiatives

The Delta Edmonton Centre Suite Hotel is a **4 Green Key Property**



ROOMS & RATES

We are pleased to confirm special rates for your event as outlined below:

		1 Bedroom Suite		Total Rooms
Monday	09-21-20	25	\$169.00	25
Tuesday	09-22-20	25	\$169.00	25
Wednesday	09-23-20	25	\$169.00	25
Thursday	09-24-20	25	\$169.00	25
Friday	09-25-20	25	\$169.00	25
Saturday	09-26-20	25	\$169.00	25
Sunday	09-27-20	25	\$169.00	25
Monday	09-28-20	25	\$169.00	25
Tuesday	09-29-20	25	\$169.00	25

The rates quoted are valid until December 18, 2015. After that time the rate is subject to re-negotiation.

Total Room Nights: 225

Currently room rates are subject to the following taxes, Alberta GST 5%, Destination Marketing Fee 3% and Tourism Levy 4%. Please note that the above taxes may change without notice.

Any adult occupants over 2 persons in each room will be an additional \$25.00.

Rates are subject to a 3-5% annual increase and will be confirmed 12 months prior to the arrival date.

VALUE ADDS / CONCESSIONS

We are pleased to offer you the following concessions as part of this event:

- Complimentary internet access in all guestrooms and meeting space.
- Meeting Package reduced from \$70.25 per person to \$67.25.

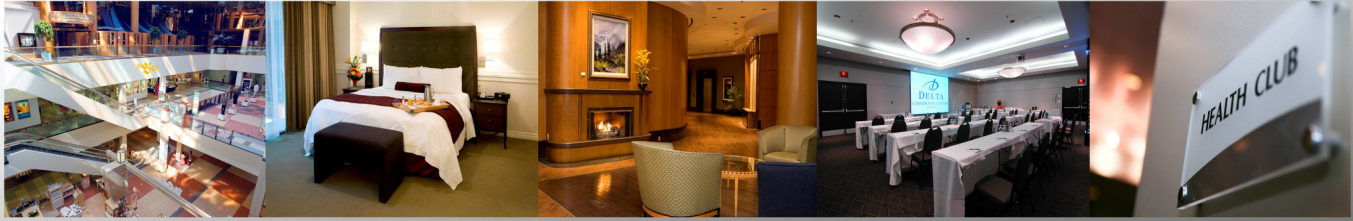
REWARDING EVENTS

If you are a qualified Marriott Rewards member, book a meeting or event with us and earn Marriott Rewards points or airline miles. It's up to you. Whether it's a conference or a business meeting or a social event, you'll qualify for points anytime you book 10 or more guest rooms for at least one night. Points can also be earned for catered-only events like receptions, banquets, weddings and reunions. Your rewarding experience begins with your preference for points – or airline miles:

- Earn 3 points per U.S. dollar spent, up to 50,000 points per event, OR
- Earn 1 airline mile per U.S. dollar spent, up to 15,000 miles per event

OUR GUESTROOMS

The Hotel's 169 Guest Rooms include oversized Delta rooms, spacious one-bedroom suites and luxurious



specialty Jacuzzi suites.

All rooms included the following standard amenities:

- Complimentary high-speed internet in all guestrooms
- 32" flat screen TV's in all One Bedroom Suites.
- 27" remote controlled colour digital televisions with in-room movies, digital music &
- Ipod alarm clock docking stations
- In-room coffee makers, iron/ironing boards

ONE BEDROOM SUITE

Our 104 one-bedroom suites are 500 – 625 square feet complete with living room and separate bedroom. These rooms offer one king bed, one queen bed in the bedroom and a double pillow-top pullout in the living room.

TRANSPORTATION

Sky Shuttle to and from Edmonton International Airport is \$18 each way, and \$30 for a round trip. Children 4 -11 are \$10.00 one way, and \$17.00 round trip. www.edmontonskyshuttle.com

PARKING

Adjacent parking available at Edmonton City Centre West Parkade.

Overnight Rate: \$25.00
Valet Parking: \$35.00



FUNCTION ARRANGEMENTS

DINING

Cocoa's Restaurant & Lounge

Award winning Cocoa's appeals to all with its intimate airy location features a continental cuisine, regional specialties and famous Sunday Brunch. Open daily for lunch, dinner and evening snacks, the Lounge features a brand new 42" Flat Screen Television, a tempting menu and overlooks the dynamic Edmonton City Centre Mall.

In-Room Dining

For those who prefer the comfort of in-room dining, this service is available from 5:30am – 11:00 pm daily.

OTHER DELTA EDMONTON CENTRE SUITE HOTEL SERVICES

Fitness Centre

After a long day, our newly equipped health club, including a whirlpool, steam room, and exercise room will help put the spring back in your step. Facility is available to registered guests at no charge. Exercise equipment includes treadmills, lifecycles, weight machine and free weights.

Business Centre

- Located on the lobby level, complete with 2 workstations, laser printer, photocopier, and high speed internet. Access the facility 24 hours a day with your guestroom key.



Services

- Valet and covered parking available seven days a week. We would be pleased to add parking charges to the master account for billing purposes, and passes can be given upon check-in.
- Dry Cleaning and valet service available Monday through Friday. Guaranteed same day service of items received prior to 8:00 am.
- Washing machine and clothes dryer are available to in-house guests free of charge
- Toll free reservations directed to our hotel at 1-800-661-6655



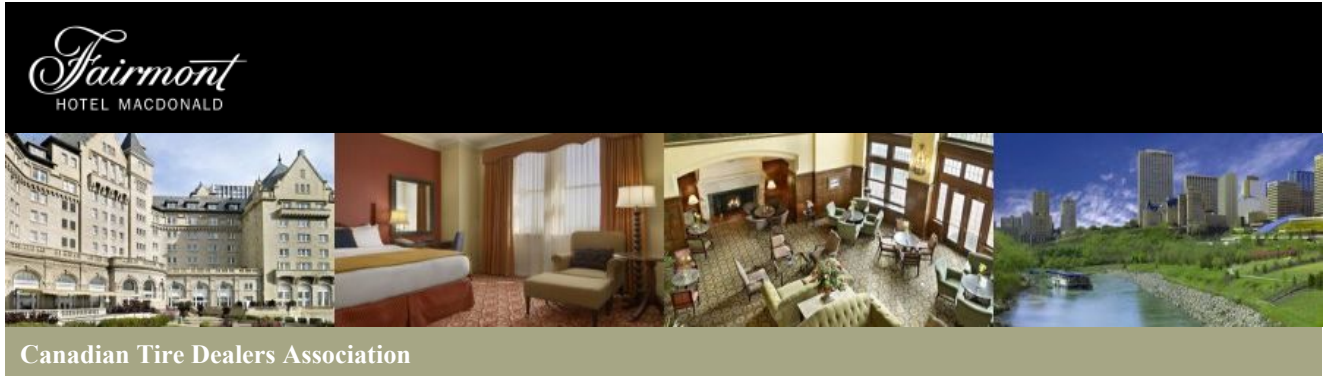
Delta Edmonton Centre is proud to be part of making your meetings green. As a green hotel we are making a promise to you. It is a promise from the air we breathe, to you our guests, and to ourselves. A promise to reduce the waste we create, the energy we use. A promise to rethink everything we do to create positive, long-term environmental change. It is a promise with a plan that utilizes the energy and creativity of Delta staff and guests. Fresh touches on every aspect of the hotel business and within the next five years Delta Edmonton Hotels, will have saved enough energy to power 21,000 homes for one year, reduced carbon dioxide that is the equivalent to taking 15,000 cars off the road for one year, saved enough water to fill 900 Olympic swimming pools and reduced and diverted waste that's the equivalent of 640 dumpster trucks.

As a 4 Green Key rate property and as a participant in Delta's "Green Program" our 100% non smoking hotel ensures you our guest will always breath freely. Another very important benefit of being fresh in Edmonton.



Located right on your very doorstep and with direct access from the hotel, [Edmonton City Centre](#) is your downtown destination of choice for shopping, dining and enjoying Edmonton's urban centre. Convenient underground parking, a wide selection of stores and a trendy downtown buzz make Edmonton City Centre the ideal location to stay or host your next event.

Thank you for inquiring with the Delta Edmonton Centre Suite Hotel, you can feel confident that our team will do everything possible to ensure you have a memorable event experience.



Canadian Tire Dealers Association

Sent: November 09, 2015

Expires: March 31, 2017

Event Dates: September 18, 2020 - October 01, 2020

Angela Saenz

Catering Manager

Tel: 780-429-6410

10065 - 100 Street

Edmonton AB Canada T5J 0N6

Tel: 780-424-5181

Angela.Saenz@Fairmont.com

Contact Me

Dear Canadian Tire Dealers Association,

Thank you for considering The Fairmont Hotel Macdonald for the Canadian Tire Dealers Association program. The proposed agenda is outlined below. To assist with your decision making, you will also find additional hotel and destination information in the menu of tabs across the top of this page. We look forward to the opportunity to create a memorable experience for your guests.

While this proposal is not a binding agreement, your space and associated rates as outlined below are available for you until March 31, 2017 at which time the link to this proposal will expire. Should we have another serious request for the space before then, you will be given notice to exercise your option to book on a definite basis. If you are unable to commit within 48 hours after this notice, space being held will be released.

We look forward to the privilege of hosting the Canadian Tire Dealers Association. I will follow up with you on . If you require any further information before then, you may reach me at 780-429-6407 or Angela.Saenz@Fairmont.com.

Sincerely,

Angela Saenz
Sales Manager

Room Block

ROOM CATEGORY	MON SEPTEMBER 21, 2020		TUE SEPTEMBER 22, 2020		WED SEPTEMBER 23, 2020		THU SEPTEMBER 24, 2020		FRI SEPTEMBER 25, 2020	
Fairmont	50	\$249.00	52	\$249.00	52	\$249.00	52	\$249.00	52	\$249.00
Fairmont View Rooms			15	\$279.00	15	\$279.00	15	\$279.00	15	\$279.00
Deluxe Room			33	\$279.00	33	\$279.00	33	\$279.00	33	\$279.00
Day Total	50	\$ 12,450.00	100	\$ 26,340.00	100	\$ 26,340.00	100	\$ 26,340.00	100	\$ 26,340.00
ROOM CATEGORY	SAT SEPTEMBER 26, 2020		SUN SEPTEMBER 27, 2020							
Fairmont	52	\$249.00	52	\$249.00						
Fairmont View Rooms	15	\$279.00	15	\$279.00						
Deluxe Room	33	\$279.00	33	\$279.00						

Day Total	100 \$ 26,340.00	100 \$ 26,340.00	
Room Total			650 \$ 170,490.00

All room rates are subject to a 4% Alberta Provincial Tourism Levy, 3% Destination Marketing Fee (Subject to GST) and 5% Goods and Services Tax (GST). All tax structures and percentages are subject to change without notice.

Room rates above are quoted in Canadian funds and are net, non-commissionable.

GUESTROOM & SUITE RATES:

I am pleased to confirm the following discounted group rates as outlined below:

Rates per night Single/Double Occupancy

Fairmont \$ 249.00

Fairmont View \$ 279.00

Deluxe \$ 279.00

Deluxe View \$ 309.00

Executive Suites \$ 499.00

ROOMS SPECIAL CONCESSIONS:

The Fairmont Hotel Macdonald is pleased to offer the following special concessions:

•One (1) complimentary room night for every fifty (50) paid room nights over the meeting dates.

For those guests who wish to extend their stay in Edmonton, room rates above will be offered for up to a total of three (3) days pre and three (3) days following the official conference dates, on a space available basis.

•Five (5) complimentary guestroom upgrades from a Fairmont to a Deluxe View guestroom over your program dates.

•Five (5) VIP welcome amenities



in partnership with

EDMONTON TOURISM

a proposal for

CTDA Annual Convention

September 21, 2020 to September 30, 2020



November 10, 2015

Edmonton Tourism
CTDA Annual Convention

Thank you for considering Matrix Hotel as a potential host hotel for CTDA Annual Convention

Program Information

Currently, our hotel has availability as per your requested dates and details are outlined below. All rates and information in this proposal will be valid until **05-20-2020**, until which I have the outlined space on a tentative hold. We will confirm the meeting space and the guestrooms once a signed contract and deposit has been returned to the hotel.

Name of Group: CTDA Annual Convention
Dates: **September 21, 2020 to September 30, 2020**

Accommodation

(MATR) Matrix Hotel, Edmonton				
Day	Date		Deluxe Rooms	Total Rooms
Monday	09-21-20	6	\$170.00	6
Tuesday	09-22-20	19	\$170.00	19
Wednesday	09-23-20	75	\$170.00	75
Thursday	09-24-20	100	\$170.00	100
Friday	09-25-20	100	\$170.00	100
Saturday	09-26-20	100	\$170.00	100
Sunday	09-27-20	88	\$170.00	88
Monday	09-28-20	6	\$170.00	6
Tuesday	09-29-20	1	\$170.00	1

Room rates are net, non-commissionable and quoted in Canadian funds. Rates are subject to a 3-5% increase per annum. Rates are on a per room, per night basis (single or double occupancy). Additional occupants (maximum quadruple occupancy) are \$30.00 per person. Children under the age of 12 years, sharing with their parent(s), stay at no charge.

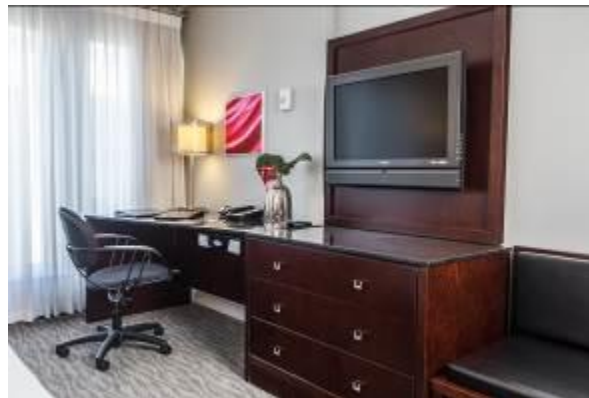


Please note guestroom rates are subject to the 4% Tourism Levy, 3% Destination Marketing Fee & 5% GST.



The following items are included in these rates at no extra charge, and reflect a value added component in excess of \$65.00:

- + Deluxe continental breakfast
- + Hosted evening wine and cheese tasting (excluding Sunday)
- + Onsite parking
- + National Post newspaper
- + In room high-speed cable and wireless internet
- + Unlimited local phone calls and calling card or toll-free calls
- + In-room coffee & tea
- + Unlimited access to the Fitness Facility
- + 24-hour access to the Business Centre
- + Mini fridge with Refreshment Centre



Guestrooms

Matrix Hotel's architecture combines the natural elements of fire, water and stone with interesting artifacts that punctuate warm hues of silver, pewter and platinum, which creates a tranquil haven for the sophisticated business traveler and discerning leisure visitor alike.

Deluxe Guestrooms

Beautifully appointed, our Deluxe Guestrooms have either one king sized bed or two doubles. They feature a granite working desk, 32" LCD flat screen TVs, Bell ExpressVu satellite service, mini fridge, and club chair for unwinding.

Sterling Suites

These beautiful one bedroom suites offer 442 square feet of soothing guestroom space. A wet bar, separate living room and fireplaces are featured here. White granite counter in the bathroom alongside the spa shower with two shower heads, upgraded plush robes are included, as well as an in-room safe, BOSE Stereo System.



Platinum Suites

These spacious 512 square foot suites, located solely on the 16th floor, have floor to ceiling windows showcasing penthouse views of the city. Along with an oversized bathroom with jetted tub and separate 3 spray body showers, upgraded Bvalgari amenities, and all the features of a Sterling Suite, these rooms are guaranteed to redefine staying in luxury.

Onyx Suite

The Onyx Suite is Matrix's Signature Suite. Enjoy a walk out terrace with outdoor fireplace, BBQ and relaxing seating. This gem is perfect for VIPs or Small receptions.



(Platinum/Sterling Suite Living Space)



(ONYX Suite)

Matrix Hotel is Edmonton's newest boutique hotel featuring chic, contemporary design and exquisite décor, offering a tranquil haven to the sophisticated and discerning traveler alike. Matrix Hotel is located in downtown Edmonton at the intersection of 107th Street and 100th Avenue. To the West: the Alberta Legislature, government office towers and restaurants; to the East: downtown business district, Shaw Conference Centre, shopping, arts and theatre, all within a few beautifully tree lined blocks of the Hotel. The University of Alberta is just minutes across the river via Light Rail Transit or vehicle. LRT Corona station is only few minutes walking distance from our hotel and can be easily accessed to anywhere in downtown.

The 184 guestrooms echoes the rich shades of the public spaces presenting a soothing and sophisticated atmosphere and offer Fretted bathrobes, pillow top mattresses with crisp linens and plush duvets, MP3 compatible CD clock radios, coffee bars, hands-free telephones, satellite TV and 32" LCD flat-screen televisions. Matrix Hotel provides a full range of services including Wildflower Grill and full service Starbucks, all aimed at ensuring both business and leisure travelers will find a tranquil haven in the heart of downtown.

The Matrix Hotel is proud to follow in the footsteps of our sister Hotels on Whyte Avenue, Varscona and Metterra Hotels on Whyte, as a 100% NON-SMOKING hotel. Recycle bins are in place in all guest rooms and an environmental program urges guest to reuse their towels. Low flush toilets are one of our greatest "Green Program" investments benefiting our environment by reducing our water consumption. LED lighting throughout our hotel saves energy and over 8500 square feet of meeting space with natural light gives our clients the ability to hold meetings using a miniscule amount of energy.

The Green Key Eco-Rating Program is pleased to award the Matrix Hotel: 4 Green Key Rating.



A 4 Green Key rating is awarded to a hotel that has shown national industry leadership and commitment to protecting the environment through wide ranging policies and practices. The Hotel has mature programs in place that involve management, employees, guests, and the public, and which have shown substantial and measurable results.

Hotel Amenities



Located in Matrix Hotel, Wildflower is a unique, contemporary fine dining restaurant concept featuring "new Canadian cuisine."

Wood fired grilling accentuates fresh food flavours and eye popping presentations that delight the senses. The interplay of deep rustic and sharp cutting edge flavours deliver a memorable culinary experience. Wildflower also promotes Canadian wines, with a focus on Canadian boutique wines.

MZ Lounge, located on the MZ level of the hotel, is open from 4pm-11pm in our Hospitality Suite where we offer our complimentary Evening Wine and Cheese Tasting. We also invite you to visit MZ lounge for some tantalizing appetizers supplied by Wildflower Restaurant along with an innovative beverage - anything from your favorite beer to our interesting bubble gum or tomato flavoured vodkas.



We understand that sometimes the day starts early, and so it is important that guests at Matrix have choices when it comes to their caffeine! Enjoy your favorite java by stopping into the Starbucks Coffee Shop located in the lobby level of the hotel, take advantage of the complimentary in-room Van Houtte coffee or grab a steaming cup at the complimentary deluxe breakfast on the MZ level.

Business Center

Located on the 2nd Floor, the Business Center houses two desktop computers and printers for the convenience of your delegates - complimentary 24 hour access with a guestroom key card.

Fitness Center

Located on the 3rd Floor, the Fitness Center is the perfect place to ensure that healthy living is maintained while staying at Matrix. Guests have complimentary unlimited access with a guestroom key card.

Transportation

If travelling from the Edmonton International Airport, we recommend your delegates choose from renting a car, taxi service or utilizing the Airport Shuttle Service. Directions can be provided upon request. Corona LRT (Light Rail Transit) Station is just steps away from Matrix Hotel, ensuring ease of getting around the city. Many ETS (Edmonton Transit System) bus routes that stop outside the hotel are another option.

Local Area

We are situated in the heart of downtown Edmonton, just blocks from the Alberta Legislative Building, walking and running



paths, and many shops, eateries and nightlife. Just one block north of Matrix, Jasper Avenue is host to local retail outlets, restaurants, pubs, and night clubs – whatever your taste is, you will be sure to find it there!

We look forward to the opportunity to work with you on this important event.
Our goal is to exceed your expectations!

Our quality of luxury accommodation, spacious facilities and professional service will provide a seamless process for you and your delegates. Should you have any questions please contact me at 780-420-4955 or sgruson@matrixedmonton.com. I look forward hearing from you in the near future.

Sincerely,

Stephanie Gruson
Director of Sales & Catering



NOVA

HOTELS

Proposal for:



Canadian Tire Dealers Association
CTDA Annual Convention

I. General Information

a. Hotels Included in this Proposal


RAMADA
EDMONTON HOTEL &
CONFERENCE CENTRE
11834 Kingsway Ave NW
Edmonton, AB

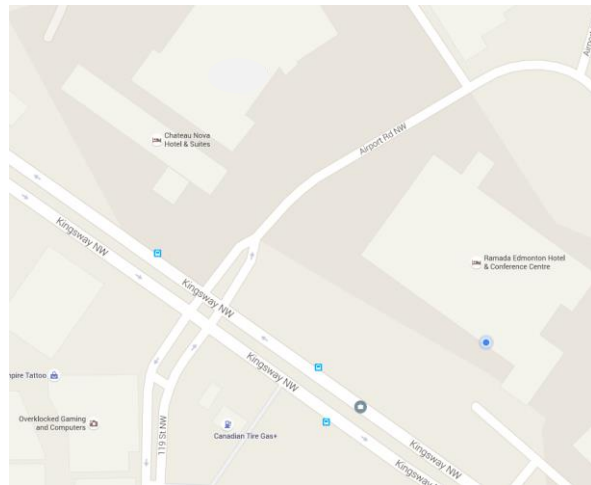
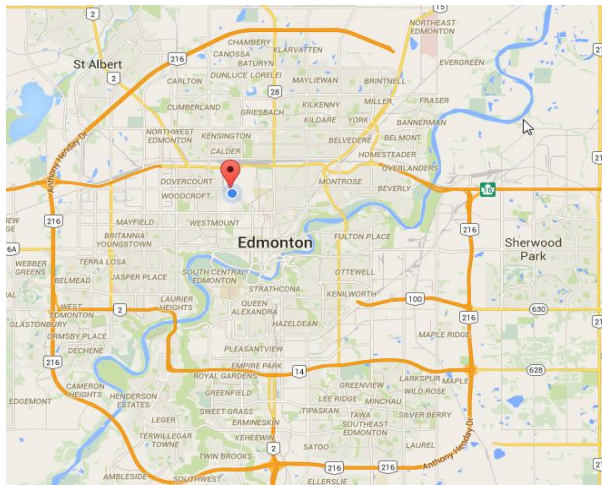
Front Desk: 780.454.5454
Catering: 780.453.7343
Fax: 780.453.7360
Web: RamadaEdmonton.com

**CHATEAU
NOVA**
Chateau Nova Kingsway
159 Airport Road
Edmonton, AB

Front Desk: 780.424.6682
Catering: 780.7325734
Fax: 780.424.6683
Web: NovaHotels.ca

b. Map and Location

Below is a Google map showing our location and proximity to each other.



c. Directions and Transportation

Our properties are centrally located to many of the city's top attractions like the TELUS World of Science, Kingsway Garden Mall and West Edmonton Mall, and only seven minutes from downtown.

From the North:

FROM HIGHWAY 28A - Follow Highway 28A which becomes 97 Street South. Follow 97 Street to Yellowhead Highway and turn west or right onto Yellowhead Highway /Highway 16. Follow to 121 Street Exit and turn left on Kingsway. Hotel will be on left hand side.

From the South:

FROM HIGHWAY 2 - North on Highway 2 to Whitemud Drive. Exit West on Whitemud Drive. Follow to 149th Street until 118th Avenue. Turn right onto 118th Avenue which will become Kingsway. Hotel will be on the left hand side.

From the West:

FROM YELLOWHEAD HIGHWAY/HIGHWAY 16 EAST - East on Yellowhead Hwy to 121 St. Exit. Follow to 121 Street Exit and turn left on Kingsway. Hotel will be on left hand side.

From the East:

FROM YELLOWHEAD HIGHWAY/HIGHWAY 16 WEST - Directly West on Yellowhead Hwy to 121 Street exit. Follow to 121 Street Exit and turn left on Kingsway. Hotel will be on left hand side.

From the Edmonton International Airport:

Exit Airport and go North on Highway 2 to Whitemud Drive. Exit West on Whitemud Drive. Follow to 149th Street until 118th Avenue. Turn right onto 118th Avenue which will become Kingsway. Hotel will be on the left hand side.

d. Features and Amenities

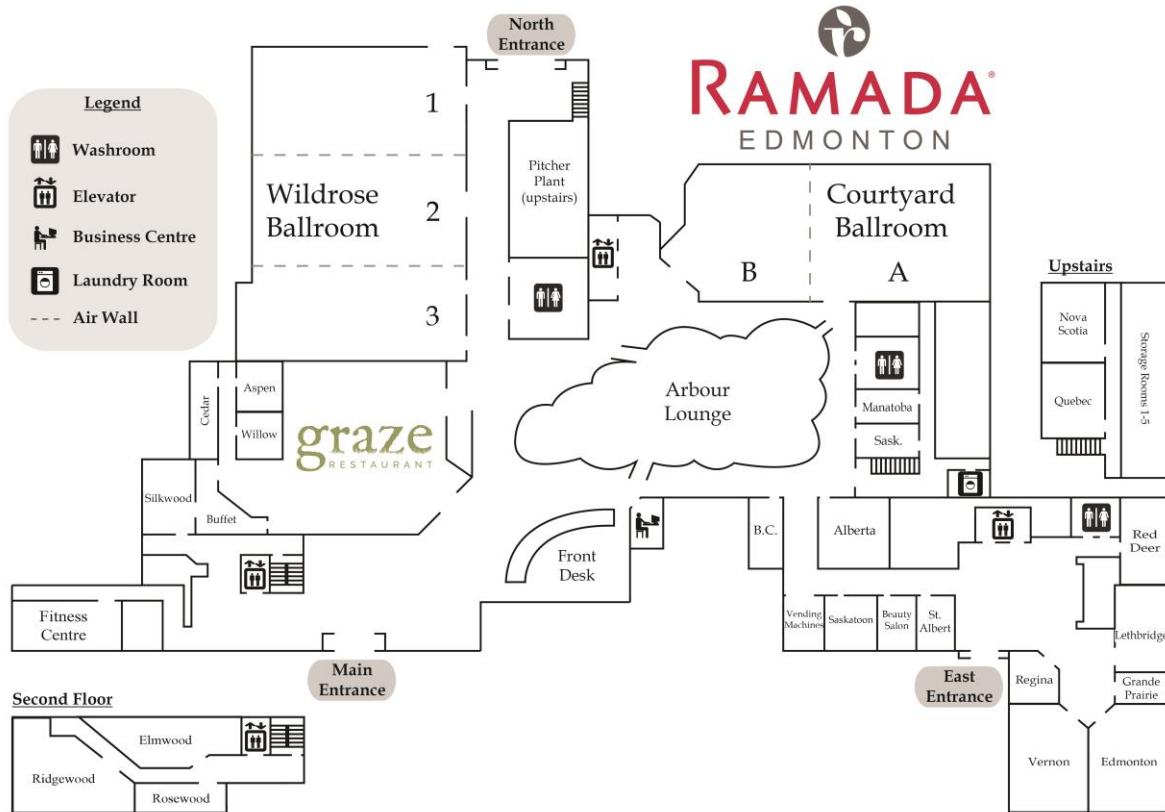
Ramada Edmonton

- 260 Guest Rooms
- Complimentary high speed wireless internet throughout hotel
- Cable TV and in-room movies in guest rooms
- Complimentary in-room coffee and tea
- Complimentary local calls and voicemail
- Complimentary vehicle/bus parking
- Business Centre
- 24 Hour Fitness Centre
- Restaurant & Lounge
- Pet friendly guestrooms available
- Complimentary laundry room facilities
- Valet dry-cleaning services
- Conference facility featuring over 30,000 square feet of function space
- 4 Green Key ECO rating
- Beauty Salon on-site

Chateau Nova Kingsway

- 153 Guest Rooms
- Complimentary high speed and wireless internet access
- Cable TV and in-room movies in guest rooms
- Complimentary in room coffee and tea
- Complimentary local calls and voicemail
- Complimentary parking
- Business Centre
- 24 Hour Fitness Facility
- Restaurant and Lounge
- Pet friendly guestrooms available
- Coin operated laundry facilities
- Valet dry-cleaning services
- Banquet and meeting facilities
- Fridges in all guestrooms
- Complimentary newspaper
- Controlled heat and A/C in all guestrooms
- Jacuzzi Suites available

e. Ramada Conference Space Map





II. Guestrooms

a. Room Block and Rates

The room blocks outlined below are currently available to hold for your attendees from November 4 - 9, 2017.

Ramada Edmonton

Room Type	Rate	Monday Sept 21	Tuesday Sept 22	Wednesday Sept 23	Thursday Sept 24	Friday Sept 25
Queen	\$110.00	10	20	20	20	20
Two Queens	\$120.00	20	90	90	90	90
Business Class	\$130.00	20	40	40	40	40
Total Rooms		50	150	150	150	150
Room Type	Rate	Monday Sept 26	Tuesday Sept 27	Wednesday Sept 28	Thursday Sept 29	
Queen	\$110.00	20	20	10		
Two Queens	\$120.00	90	90	20		
Business Class	\$130.00	40	40	20	10	
Total Rooms		150	150	50	10	

Chateau Nova Kingsway

Room Type	Rate	Monday Sept 21	Tuesday Sept 22	Wednesday Sept 23	Thursday Sept 24	Friday Sept 25
Single Standard	\$120.00		40	40	40	40
Double Standard	\$130.00		15	15	15	15
Queen Deluxe	\$140.00		20	20	20	20
King Deluxe	\$150.00		10	10	10	10
Executive Queen	\$180.00		30	30	30	30
Total Rooms			115	115	115	115
Room Type	Rate	Monday Sept 26	Tuesday Sept 27	Wednesday Sept 28	Thursday Sept 29	
Single Standard	\$120.00	40	40			
Double Standard	\$130.00	15	15			
Queen Deluxe	\$140.00	20	20			
King Deluxe	\$150.00	10	10			
Executive Queen	\$180.00	30	30			
Total Rooms		115	115			

	Sept 21	Sept 22	Sept 23	Sept 24	Sept 25
Combined Room Total	50	265	265	265	265
	Sept 26	Sept 27	Sept 28	Sept 29	
Combined Room Total	265	265	50	10	

b. Guest Room Rate Information

- o Rates are subject to 5% GST, 4% Hotel Tax, and 3% Destination Marketing Fee. Prevailing taxes and fees are subject to change. The hotel agrees to pay a 10 commission to Golden Planners for rooms consumed in the above block and dates.
- o Above rates are based on Double occupancy. Each extra person sharing a room above two (2) people will be charged an additional \$10.00 per night.
- o The above are 2015 rates. Please anticipate up to a 5% annual increase.

c. Guest Room Reservation Cutoff Dates

The cutoff date for your block of rooms is **Tuesday, October 17, 2017**. All rooms must be assigned by guest name by this date. At this time, all unassigned rooms will be converted back to the hotel inventory for general sale and the negotiated rate will be honored on an availability basis.

III. Hotel Policies

a. Cancellation Policy

The following Cancellation Policy would be in effect for this event:

The parties agree that the following schedule represents a reasonable effort on behalf of the hotel to establish our actual damages to be paid by the client for cancellation of this agreement to the hotel, which shall be due and payable upon receipt.

Number of Months Prior to Arrival	Cancellation Fee
6-12 months (180 days or more)	25% of gross revenue*
3-6 months (90 days or more)	50% of gross revenue*
Less than 3 months (less than 90 days)	75% of gross revenue*
Less than 30 days	100% of gross revenue*

* Gross revenue is equal to anticipated revenue derived from guestrooms, food & beverage, meeting room and ancillary enterprises of the event was held as scheduled.

- Should the client re-book a cancelled event within 30 days to actualize within the following 12 month period 50% of the cancellation fee would be applied to the rescheduled event.
- Should the hotel be able to re-book space or guestrooms held to another client, the cancellation fee would be refunded.

b. Attrition

The following attrition Policy would be in effect for this event:

The hotel has taken the guest rooms out of our available inventory as outlined herein. The parties acknowledge that should the Hotel not realize the guaranteed attendance to be provided by you, it would be difficult to determine the Hotel's actual loss. Accordingly, the parties agree that the following attrition scale will apply, that it represents a reasonable effort on behalf of the hotel to establish its loss and that it shall represent liquidated damages (the "Attrition Fees"). The Attribution Fees will be added to and payable as part of the preferred method of payment chosen in this Agreement.

A minimum of 80% of the room block indicated herein must be actualized (i.e. occupied and paid for by the client or its guests). Should the room nights occupied fall below 80% of the total room nights blocked, the Client will be responsible for the Attrition Fees equal to the revenue difference between the actual rooms and the minimum 80% guarantee plus applicable taxes. The Hotel will make reasonable efforts to mitigate the damages and will try to re-sell the rooms. Should the Hotel reach 100% occupancy on the peak night of the event dates outlined herein, the above noted Attrition Fees will be waived.

Proposal for:

CANADIAN TIRE DEALERS ASSOCIATION

Re: CTDA Annual Convention 2020 – September 21-30, 2020

SUBMITTED BY: Jennifer Ramoudit, Senior Sales Manager
November 10, 2015



The Sutton Place Hotel Edmonton:

Delicate crystal chandeliers, warm colors of Italian marble and granite, soft luxury Persian carpets, and unique French Provincial styled furnishings, The Sutton Place Hotel Edmonton is ideal for business or leisure travel. An award-winning banquet team, attention to detail, and personal care provide the elegance The Sutton Place Hotel is renowned for.

Location, location, location! Connected by pedway to five major office towers and over 400 shops, restaurants, and movie theatres in the Edmonton City Centre Mall, every convenience of downtown Edmonton is at our guests' fingertips. We also have fantastic onsite amenities including a Starbucks located in our gift shop, and our in-house restaurant CHOP. We are located in the heart of the Edmonton Entertainment District, just moments from our city's most exciting venues and attractions, and only a block from the new Rogers Place arena which will open in the fall of 2016. There will never be a dull moment for your delegates in their down time!

GUESTROOM INFORMATION

Available Dates:

We presently have guestrooms available on your requested dates from September 21-30, 2020. We have not protected the space at this time, but would be delighted to do so upon request.

		Sutton King Bed		Sutton Double Beds		Deluxe King Bed		Total Rooms
Monday	09-21-20					50	\$159.00	50
Tuesday	09-22-20			60	\$159.00	90	\$159.00	150
Wednesday	09-23-20	25	\$159.00	60	\$159.00	90	\$159.00	175
Thursday	09-24-20	25	\$159.00	60	\$159.00	90	\$159.00	175
Friday	09-25-20	25	\$159.00	60	\$159.00	90	\$159.00	175
Saturday	09-26-20	25	\$159.00	60	\$159.00	90	\$159.00	175
Sunday	09-27-20	25	\$159.00	60	\$159.00	90	\$159.00	175
Monday	09-28-20					50	\$159.00	50
Tuesday	09-29-20					10	\$159.00	10

TOTAL NUMBER OF ROOM NIGHTS	1135
------------------------------------	-------------

NOTE: Rate quoted is for 2016, with an annual increase anticipated no more than 3%. Rates are subject to 4% provincial levy, 3% Destination Marketing Fee and 5% GST. All rates are quoted in Canadian funds and are non-commissionable.

Special Considerations:

The Hotel is pleased to offer...

- 1 complimentary room for every 40 rooms occupied by your delegates. **Value of \$5614.**
- 650 complimentary upgrades to Deluxe Rooms, a difference of \$20 per room. **Value of \$11608.**
- 4 complimentary upgrades to Grande Suites, a difference of \$120 per room. **Value of \$4839.**
- 10 complimentary VIP Welcoming Amenities. **Value of \$300.**
- 4 complimentary valet parking passes for duration of stay. **Value of \$1404.**
- **Complimentary wifi and local calling in all guestrooms.**
-

******Total value of complimentary concessions offered is \$23765.******

Value Added Features:

- Swimming Pool & Fitness Area: Access to the swimming pool & fitness area is complimentary to all overnight guests.
- Pre/Post: The guestroom rates will be extended 3 days pre and post, subject to availability at the time of booking.
- Complimentary wireless internet access – in all guest rooms.
- Completely non-smoking hotel.

**Accommodations breakdowns:
313 Total Guest Rooms and Suites**

- 182 King Rooms
- 102 Double Rooms
- 23 Executive Rooms
- 3 Grand Suites
- 1 Royal Suite

In Room Amenities:

- Secured floor access
- Room service daily from 6:00am - midnight
- Daily Newspaper
- CD/DVD players in all guest rooms
- In room movies
- Bathrobes in all guest rooms
- Iron & Ironing Board
- Mini fridge, easy chair, *coffee maker*

ATTRITION AND CANCELLATION POLICIES

Should your group go ahead with its event, below are our standard cancellation and attrition policies.

Attrition:

The parties agree that the group and the Hotel will share in the loss of revenues suffered by the hotel in the event of the group's failure to utilize all of the rooms and services agreed to after the final 45-day review. The group therefore agrees to pay a percentage of lost revenue.

For Guestroom room revenue, the lost revenue will be calculated by multiplying the number of rooms not utilized out of the groups block times the average room rate of rooms actually utilized, plus tax.

Percentage of rooms	Group Pays
80% or more	0
79% or less	100% of lost revenue

For food, beverage, meeting rooms and other services revenue, lost revenue will be calculated by subtracting the exact amount of food and beverage provided from the total anticipated food and beverage agreed to herein. The lost revenues for food, beverage, meeting rooms and other services and for sleeping rooms will be calculated separately.

Cancellation / Modification:

If the Group fully cancels the Event, the Hotel shall have suffered damages equivalent to the profits that the Hotel would have earned from the sale of rooms, food and beverages, and use of recreation facilities, etc. in connection with the Event. The Hotel reserves the right to recover lost anticipated revenues including, but not limited to, guestrooms, function space, food and beverage according to the following schedule:

NUMBER OF DAYS PRIOR TO THE EVENT	PERCENTAGE OF LOST REVENUE
180 - 365 days	10% of anticipated revenues
136 – 179 days	25% of anticipated revenues
91 – 135 days	50% of anticipated revenues
46 – 90 days	75% of anticipated revenues
0 – 45 days	100% of anticipated revenues

HOTEL FEATURES:

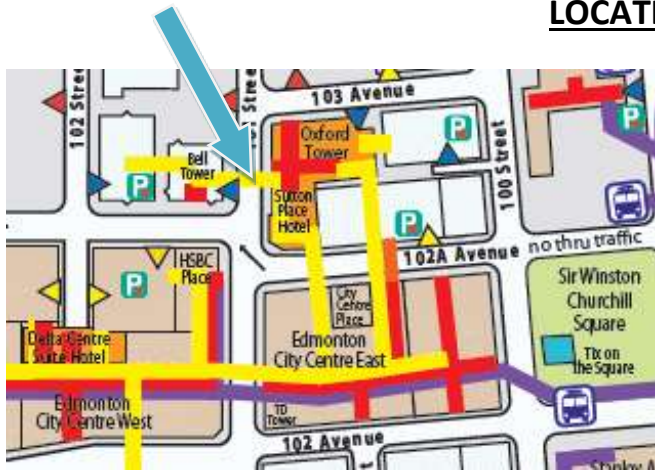
Indoor Swimming Pool:



Accumulate points for all your meetings and redeem them for unique gifts and rewards. In addition, as a Sutton Meeting Professional Points member, you will be recognized as our top-tier Sutton Prestige Platinum status member, which comes with a host of exclusive benefits.

Quick & Easy  [Register Now](#)

LOCATION



- Located in the heart of downtown Edmonton, and the Arts and Entertainment District.
- Adjacent to the Edmonton City Centre Mall, with over 400 shops and services, and the Light Rail Transit System (LRT), connecting you to the rest of the city. Both accessible by indoor pedway.
- An easy 10 minute walk (either above or underground) from the Shaw Conference Centre.
- Minutes from Rexall Place, and across the street from the new Ice District and Rogers Place arena, opening in the fall of 2016.
- 8 minute drive to Northlands and the Edmonton EXPO Centre— The largest space of its kind in Western Canada.

AIRPORT INFORMATION: Edmonton International Airport: 35km – approx. 35 minutes

- Shuttle bus: Sky shuttle \$18.00 one way or \$30.00 return
- Taxi: Approximately \$55.00, pending traffic

Parking:

Hotel parking is available at the prevailing rates of \$31.00 per day for self-parking, or \$39.00 per day for valet parking. ***Please note: Parking prices are subject to change without notice, as the hotel does not own the parking facilities.**

For more information on The Sutton Place Hotels please visit our website at www.suttonplace.com.



The Sutton Place Hotel



THE SUTTON PLACE HOTEL COMPANY
EDMONTON • REVELSTOKE MOUNTAIN RESORT • VANCOUVER
1.866.378.8866 • WWW.SUTTONPLACE.COM

STAY
WELL

at the westin edmonton

a proposal to host:

CANADIAN TIRE DEALERS' ASSOCIATION
CTDA Annual Convention 2020



THE WESTIN
EDMONTON

www.westin.com/edmonton
starwoodhotels.com
starwoodhotels.com/preferredguest
edmonton.com
exploreedmonton.com



Julie Ann Vespi, CPA, CA
 CANADIAN TIRE DEALERS' ASSOCIATION
 171 Ambassador Dr Unit 5
 Mississauga, ON L5T 2J1
 Canada

Dear Ms. Vespi,

I would like to thank you for your interest in placing your guests for the CTDA Annual Convention 2020 with Starwood Hotels & Resorts. I am very pleased to introduce myself as your representative for The Westin Edmonton. My goal is to provide seamless and efficient communication to find the best fit and value for your program. Detailed below is information on how your program would be an excellent fit for our property.



HEART OF DOWNTOWN



The Westin Edmonton's trendy downtown location puts you within steps of the city's most sought-after attractions. Discover the best shopping, dining & entertainment Edmonton has to offer, all in the immediate area. The hotel is just steps from the Shaw Convention Centre, making it a convenient choice for business travellers.

Outdoor enthusiasts will appreciate the lush greenery of the river valley, home to the largest expanse of urban parkland in North America. From shopping to festivals, to performing arts, there's always something to do in the city. Music lovers can check out one of the many annual festivals, which include the world-renowned Folk Festival, Street Performers Festival, and Fringe Festival. Just seven miles from the hotel, West Edmonton Mall offers more than 900 stores, a skating rink, Water Park, and more. If you prefer to stay close by, we are just two blocks from the Arts District, where you'll find the Art Gallery of Alberta, Winspear Centre ~ home of the Edmonton Symphony Orchestra and the Citadel Theatre.

1st Option

We are delighted to be able to offer you 1st option availability for both guestrooms and meeting space over your preferred dates of: September 21 to September 27, 2020.

GUEST ROOM REQUIREMENTS

	Mon, Sep 21, 2020	Tue, Sep 22, 2020	Wed, Sep 23, 2020	Thu, Sep 24, 2020
Deluxe (ROH)	10	30	60	60
Traditional (ROH)	40	120	240	240
Attendees Room Block Total	50	150	300	300

	Fri, Sep 25, 2020	Sat, Sep 26, 2020	Sun, Sep 27, 2020	Mon, Sep 28, 2020	Tue, Sep 29, 2020	Total
Deluxe (ROH)	60	60	60	10	0	350
Traditional (ROH)	240	240	240	40	10	1410
Attendees Room Block Total	300	300	300	50	10	1760

Guest room Minimum: \$ 452,240.00

Total Number of Guest rooms: 1760

The Hotel requires a minimum 20% of the Total Guest room Requirements be allotted in deluxe category.

GUEST ROOM RATES

We are delighted to offer the following confirmed 2020 rates to your group:

	<u>Single/Double</u>
Traditional Guestroom	\$ 249.00
Deluxe Guestroom	\$ 289.00

An additional \$25.00 per person is required for rooms that exceed occupancy of 2 guests – max occupancy 4 people. Guestroom rates are net non-commissionable and exclude provincial and local taxes, currently 12.27%.

QUIETLY RECHARGE

Each of our 416 guest rooms and suites are designed to provide the utmost in comfort and tranquility for our guests. Our rooms include an array of thoughtful amenities designed to leave you feeling well cared for during your stay. Let breath taking views of Edmonton lift your spirits as you enjoy complimentary Starbucks® coffee each morning.

Our signature Westin Heavenly® Bed provides ten layers of comfort for a deep sleep that replenishes your brain and body, while the Heavenly® Shower helps you rise and shine like never before.

Westin didn't discover fresh air, but we're proud to offer 100% smoke-free guest rooms.



Traditional Rooms

- 285 Square Feet / 26 Square Meters
- 32-inch flat panel LCD TV
- Spacious work desk
- In-Room Safe

These amenities are available in all rooms within the hotel.

Deluxe Rooms

- 432 Square Feet / 40 Square Meters
- Newly renovated in 2014
- 40% larger than our Traditional guestrooms
- Comfortable seating area



MEETING & FUNCTION SPACE

- **24,000** square feet of flexible meeting and event space
- **15** breakout rooms
- Adjustable lighting
- Wall-mounted telephones, extra telephone/fax lines
- Wireless & wired high speed internet
- Spacious Adjoining Foyers



Elevate your event the Westin way with...

StarGroups Customized Event Websites

A complimentary custom website for your event — it's one stop for everything you need. Your StarGroups template includes a unique URL and allows you to add:

- Logos, images and marketing messages for your event
- Event and destination details, including transportation, dining and local area information
- Necessary documents for attendees to download
- A guest room-booking tool with instant email confirmation for attendees
- Secure, 24 /7 real-time reporting tools for you

Clutter-Free Meetings

Planners and guests stay organized and productive with an open room design/layout and socially conscious amenities.

- Streamlined stations provide paper, pens, glasses, water and other thoughtful touches, keeping the main work area uncluttered and organized.
- Energy-efficient lightbulbs, double-sided notepads and water pitchers in lieu of bottled water, help eliminate waste and reduce consumption.

Please click on the links below for more information:

[Floor Plans & Capacity Chart](#) | [360° Virtual Tour](#) | [Banquet & Catering Menus](#)

The following is our understanding of your function and meeting space requirements:

Date	Function Description	Start - End Time	Function Space	Setup	# PPL	Room Rental
Wed, 23-Sep-2020	CTR Update – Move In	8:00AM – 6:00PM	Ballroom			\$30,000 (24-hr rate)
	24-hour hold	6:00PM – Midnight	Ballroom			
	Dealer Registration	12:00PM-9:00PM	Centennial			\$2725 (24-hr rate)
Thu, 24-Sep-2020	Dealer Registration	6:30AM - 9:00PM	Centennial	Cocktail Rounds	50	\$1525
Fri, 25-Sep-2020	Dealer Registration	7:00AM - 6:00PM	Centennial	Cocktail Rounds	50	\$1525
	CTR Update AM Session	8:00AM - 12:00PM	Ballroom	Rounds	600	\$17,500
	Partners Program	9:00AM - 12:00PM	Devonian	Rounds	150	\$1750
	Business Lunch	12:00PM - 2:00PM	Ballroom	Existing	550	-
	CTR Update PM Session	2:00PM - 5:00PM	Ballroom	Rounds	600	-
Sat, 26-Sep-2020	CTDA & Dealer Holdings AGM	8:00AM - 9:30AM	Ballroom	Half Rounds	400	\$17,500
	Dealer Registration	9:00AM - 5:00PM	Centennial	Cocktail Rounds	50	\$1525
	Partcon Wine & Cheese	5:00PM - 6:30PM	BC/AB/Yukon	Cocktail Rounds	300	\$6300
Sun, 27-Sep-2020	Dealer Registration	9:00AM - 5:00PM	Centennial	Cocktail Rounds	50	\$1525

Date	Function Description	Start - End Time	Function Space	Setup	# PPL	Room Rental
	Gala Evening – Dealers	6:00PM - 11:30PM	Ballroom	Rounds	650	\$17,500
Mon, 28-Sep-2020	GALA Move Out	8:00AM - 5:00PM	Ballroom		1	\$17,500
Total						\$416,875.00 (see below)

F&B Minimum: \$ 80,000.00

Rental Minimum: \$0.00

Based on your Minimum Food & Beverage Revenue commitment of \$80,000.00, the Hotel is pleased to offer the meeting space, valued at \$116,875.00 on a complimentary basis for the duration of your convention. Should the anticipated Food and Beverage Revenue (\$80,000.00) not materialize; a total meeting room rental fee will be determined based on sliding scale below. A service charge, currently 19% and 5% Goods & Service tax, will be added to all food and beverage prices as well as any function space rental fees (*service charges and taxes are subject to change*).

EXPECTED F&B REVENUE	FUNCTION SPACE RENTAL FEE (excluding taxes and other charges)
\$80,000 and above	Complimentary
\$68,000 – \$79,999	\$12,000
\$58,000 – \$67,999	\$19,000
Less than \$58,000	\$35,000

The Westin Edmonton reserves the right to re-assign space until final approval from the Convention Services Manager is received. Rental charges above are based on your program outline and any changes and/or additions not outlined in this proposal may be subject to additional rental charges. Rooms are not held on a 24 hour basis unless indicated and additional charges will apply to a 24 hour hold.

Please note that we are holding space for you on a tentative, first option basis until December 31, 2015, after which time the space is will be released if not confirmed.

KEY CONCESSIONS

Hotel will provide the following concessions if Group fulfills its Minimum Food & Beverage Revenue commitment and, at least 85% of its Minimum Guest Room Revenue.

- Complimentary guestrooms will be provided on a ratio of one (1) guestroom night accommodation per every fifty (50) guestrooms utilized on a non-cumulative basis for each night of your event (value is \$8,715.00)
- Two (2) complimentary room nights for pre-planning after the contract is signed (value is \$498.00)
- One (1) complimentary upgrade to a Deluxe Junior Suite for nine (9) nights at the negotiated group rate (value is \$1,800.00)
- One (1) complimentary Parlour Hospitality Suite for nine (9) nights (value is \$10,800.00)
- Two (2) complimentary upgrades to the bedroom suites adjoining the Parlour Hospitality Suite for nine (9) nights (value is \$1,260.00)
- Three (3) complimentary VIP in-room welcome amenities (value is \$120.00).

Value of above concessions = \$23,193.00. Plus see the bonus offer below!

Book Early. Save More.

GET REWARDED FOR PLANNING AHEAD. Book a meeting at any of over 1,200 participating Starwood hotels and resorts worldwide, and receive a discount on master-billed rooms. The earlier you plan, the bigger the discount you'll receive:

BOOKING WINDOW	DISCOUNT ON MASTER-BILLED ROOMS
>3 years	6%
366 days - 3 years	5%
181 - 365 days	4%
91 - 180 days	3%
< 90 days	3%

Plus, earn a signing bonus of 1,000 Starpoints® for every 10 eligible room nights booked, up to 100,000 Starpoints (Certain limitations apply). Offer Valid Through April 30, 2016. Learn more at spg.com/planahead

POWER UP



Fitness & Renewal...

Recharge in **WESTIN WORKOUT** our newly refreshed fitness centre with the latest fitness equipment and a heated, indoor pool. Pack light and stay fit with our New Balance gear lending program. Hotel guests can join our “seasonal” Running Concierge on scheduled guided walks or runs of the scenic Edmonton river valley. We focus on wellness and want to provide a comfortable, clean and healthy environment and as such our hotel is 100% SMOKE FREE!

EAT WELL

with SuperFoodsRx™...

Teaming with doctors and nutritionists Westin has created a menu that cultivates “food synergy”. By pairing certain foods to increase their nutritional value, these health-enhancing menus are created for a better you.

ShareRestaurant & The Lobby Lounge



Our restaurant and lounge have also been renewed in a sleek, contemporary décor and provide a great place for your guests to unwind and recharge amongst the stylish atmosphere and irresistible menu.

We invite you to indulge in mouth-watering fare from Share restaurant inspired by executive Chef Ryan O’Flynn; winner of the ‘2015 Canadian Culinary Championships’ an award winning experience awaits you!

Environmental Practices...

The Westin Edmonton has been awarded a 4 Green Key rating by the Hotel Association of Canada in recognition of our commitment to reduce waste and protect the environment through:

- *Energy & Water Conservation*
- *Waste Minimization & Environmentally Responsible Purchasing*
- *Enhanced Indoor Environmental Quality*
- *Raising Awareness*



'*Make a Green Choice*' is our guestroom sustainability program that reduces water consumption, energy usage and helps keep chemicals out of the environment. It rewards you too! For each eligible night you decline service, you'll receive a \$5 food & beverage voucher OR 500 Starpoints.

Distinction...



The Westin Edmonton is very pleased to have been designated the prestigious CAA/AAA 4 Diamond Rating as well as a 4.5 Star Rating from Canada Select. Previous awards included the Meetings and Incentive Travel Readers Choice Award for Best Meeting Facility & Service Excellence in Western Canada as well as the recipient of the Heart and Stroke Foundation of Canada's Leadership Award in Heart Healthy Policy. This Award is being presented to Westin

Hotels for being the first hotel chain to adopt a complete "smoke-free" policy, a policy that created a sea of change in the hotel industry.

Starwood Preferred Guest

As a member of the Starwood Preferred Guest (SPG®) program, you'll earn Starpoints® for each stay at any of our 1,200+ hotels and resorts around the world, across ten distinctive brands including St. Regis®, W® and Westin®. Our unique portfolio offers you the best luxury brands in the world with even better rewards. More luxury, more destinations means more ways to get the rewards you want, when you want them.



Your Starpoints are more than a number — they're your ticket to do more, see more and get more. Enjoy the best redemption options in the industry, including Free Night Awards and Award Flights without blackout dates, room upgrades and access to one-of-a-kind experiences like a meet and greet with your favourite celebrity.



Additionally, if you're a professional meeting planner or arrange travel for others, when you participate in SPG® Pro you'll discover personal rewards for the work you do professionally. Your SPG membership opens the door to the unexpected. Don't miss out — sign up today at spg.com and look forward to great benefits.

As you can see there are many reasons for choosing The Westin Edmonton to host your event. Our team is ready to ensure that you experience so much more by redefining efficient service with an effortless style and gracious attitude that ensures a truly unforgettable experience and most importantly, you and your delegates are at your best!

I look forward to the opportunity to work with you and welcome your important attendees to relax and unwind at The Westin Edmonton. Please don't hesitate to reach out to me if I may provide any additional information or answer any questions you may have.

Be Inspired,
Be Westin,

**RITA
FROST**

Sales Manager, Group

THE WESTIN EDMONTON

10135-100 STREET, EDMONTON, ALBERTA T5J 0N7 CANADA
T 780.493.8922 F 780.424.1525

westin.com/edmonton

For a better you.™



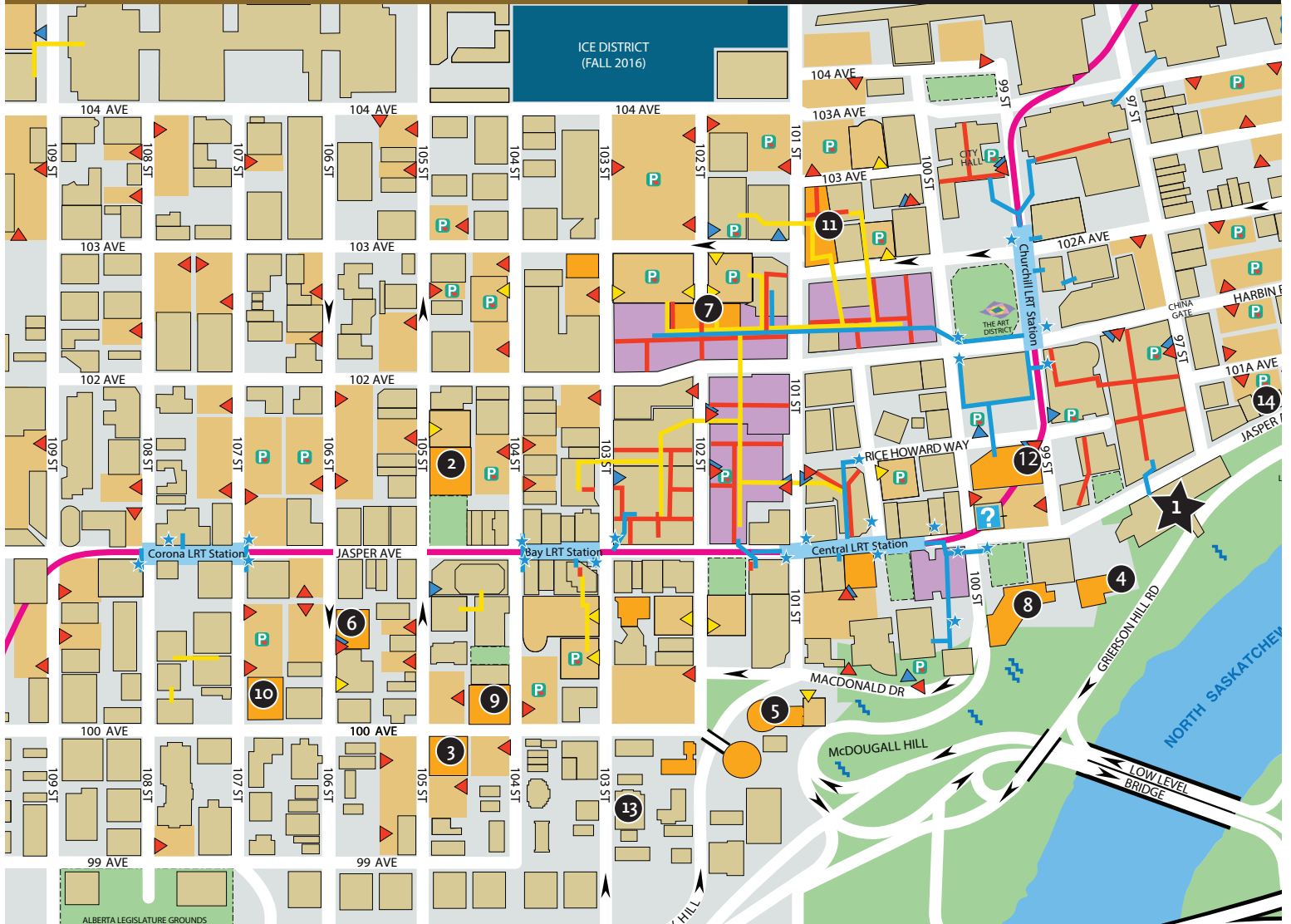


photo by Robert Lerner Meyer

Conference Options

Offsite Venue Options
[Click Here](#)

EDMONTON
ORIGINAL SINCE
WAY
BACK



Downtown Hotel Map

Location Key

- | | | |
|----|---------------------------|-----------------------------------------------|
| 1 | Shaw Conference Centre | 9797 Jasper Avenue |
| 2 | Coast Edmonton Plaza | 10155 - 105 Street |
| 3 | Comfort Inn and Suites | 10425 - 100 Avenue |
| 4 | Courtyard by Marriott | One Thornton Court, 99 Street & Jasper Avenue |
| 5 | Chateau Lacombe | 10111 Bellamy Hill |
| 6 | Days Inn Downtown | 10041 - 106 Street |
| 7 | Delta Centre Suite Hotel | 10222 - 102 Street |
| 8 | Fairmont Hotel Macdonald | 10065 - 100 Street |
| 9 | Holiday Inn Express | 10010 - 104 Street |
| 10 | Matrix Hotel | 10640 - 100 Avenue |
| 11 | Sutton Place Hotel | 10235 - 101 Street |
| 12 | Westin Hotel | 10135 - 100 Street |
| 13 | Alberta Place Suite Hotel | 10049 103 Street |
| 14 | Hyatt Place Hotel | Opening 2015 |





Why is Edmonton different?

There are theories. Maybe it's our northern home, where for years we've learned to make our own fun. Perhaps it's our legacy of entrepreneurs dreaming up oddities: the continent's first, biggest and wildest Fringe theatre festival and a shopping mall that at one time had more submarines than the Canadian navy. Edmontonians have always been unusually keen to try, and build, something new.

We're a big city with small town values, a vibrant urban centre in the heart of wilderness. From close encounters with free roaming bison to surfing indoors to taking your taste buds on a journey to some of the hottest craft beer taprooms, hyper-local bistros and indie bakeries in Canada, you'll find there's a uniqueness to how Edmontonians do ordinary things. And we want you to be a part of it.

One thing's for sure, if you're looking for an unforgettable, original experience, you'll find it here. Peruse our list of activities and poke around ExploreEdmonton.com for all the proof you need.



EDMONTON CANADA

Gateway to
Canada's north
and Rocky
Mountains

0%

provincial sales tax

172
attractions

call Edmonton and area
its home

It's only 3 hours to
Jasper National Park

Alberta's capital is also
Canada's fastest growing
city, home to 1.1 million
friendly residents

Edmonton is off the
beaten track

Fort Edmonton Park



Step back 150 years to the original Edmonton. Ride the hand-carved carousel horses at the midway, catch a Klondike melodrama and spend a night in the past at the luxurious Hotel Selkirk. Who knew a time without tech could be so... invigorating?

Edmonton Arena District

Gather in the city's hub and heart, the stunning Edmonton Arena District. A vibrant public plaza, Rogers place — a state-of-the-art sports, entertainment and event venue — and a four star hotel with 362 guest rooms and suites, a 9,500-square-foot ballroom and 24,000 square feet of meeting and conference space make it a destination unlike any other in North America.

West Edmonton Mall

We call it a "mall". What it is really is North America's Mt. Everest of shopping, indoor entertainment and attractions. 800 shops and services. The world's largest indoor wave pool. Penguins. A casino. Still not interested? Chew on this: a full-sized pirate ship. As a bonus, there is no provincial sales tax, just the federal five percent Goods and Services tax.



Majestic Aurora

Let Edmonton be your gateway to the magic of the Aurora Borealis in the spectacular North. Spend memorable evenings under the mesmerizing Northern Lights in prime viewing spots where the colourful sky dance unfolds.

Convention Spaces

Marvel at one of the best convention views in town at the Shaw Conference Centre, overlooking the beautiful North Saskatchewan River Valley, and able to accommodate events of any size or scope. The Edmonton Exposition and Conference Centre is a little bit of high-tech features with a lot of flexible, indoor space, with enough room to accommodate the biggest conferences and special events west of Toronto.

River Valley Adventure Co.

What better way to explore North America's longest urban parkland than by Segway? Summer or winter, wind your way through our river valley trails, taking in the scenic landmarks and breathtaking vistas at a leisurely yet exhilarating 15 km/hr.





FORT EDMONTON PARK

Go back in time more than 150 years and walk through the days of the fur trade, and the pioneer years of 1885, 1905 and 1920. At Fort Edmonton Park costumed interpreters bring the past to life, answer your questions and invite you to experience the best of the period. Take a ride on a steam train, play pioneer games, bake bread the old-fashioned way, shop 'til you drop, or hit the Midway for rides, games and more fun. Don't forget to get your old-timey picture taken at Ernest Brown, see "Northern Light" at the Capitol Theatre or stay for lunch at the Hotel Selkirk.

Fort Edmonton Park—the largest living history museum in Canada—is located in the beautiful North Saskatchewan River Valley and is 10 minutes from the world famous West Edmonton Mall. The park is open to the public from the May long weekend to the end of September, as well as for a variety of holidays and special occasions year round. From murder mysteries, to chilling Spooktacular events, to special Christmas festivities, Fort Edmonton Park is yours to explore!

Admission Prices	2014	2015	2016
Adult	\$15.00	\$15.00	\$16.50
Child/Youth/Senior	\$11.20	\$11.20	\$12.30
Family	\$52.45	\$52.45	\$57.70
Unlimited Ride Passes	NA	\$8.70	\$9.55



BOOKING CONTACT

Kim Fulton
780.423.5066
kimberly.fulton@fortedmontonpark.ca

More to Discover:

We offer guided tours, customized meal plans and entertainment packages, subject to demand and price. Other languages are available for guests.

New

Large scale conceptual plans have been developed to build a new world-class First Nations exhibit and commercial block between the Hotel Selkirk and the Capitol Theatre. Fort Edmonton Park expanded the 1920s Midway with two new rides in 2014: the Chair-O-Planes and fun house.



KITCHEN BY BRAD

Get hands on, transforming local ingredients into mouth-watering dishes at KITCHEN by Brad. Set the theme: Will you wander around Italy tasting pasta, pizza, and porchetta? Or will you visit the old country with rustic Ukraine dishes? Working with Brad Smoliak, you'll lay out a five-course menu using the finest of local ingredients that he'll bring to life in front of you, followed by tips and tricks for helping you master the craft in your own kitchen. You'll also learn about the Edmonton food scene from one of the leaders within it. Both cooking classes and immersive dining experiences in a private downtown location make KITCHEN a must visit for anyone with a culinary interest.

On her last Royal Visit to Edmonton in 2005, the Queen of England dined on Brad's specially prepared, uniquely Edmonton, culinary delights! In short, he's a chef, culinary master, TV personality and entrepreneur who manages to stand way out in a city bursting with high-quality, innovative and wildly popular eateries. But the best thing about Brad is that when you walk into KITCHEN, he's all yours.

What you will experience:

- 5 items that are prepared with Brad Smoliak, right in front of you and your clients
- Family style tasting and sampling of every creation
- The sharing of tips and tricks of the trade so you can be a more confident cook
- A glass of prosecco and two glasses of wine per person
- Coffee, tea and sparkling water
- Printed recipes to take home for every item created



BOOKING CONTACT

Brad Smoliak
780.757.7705
brad@kitchenbybrad.ca
www.KitchenByBrad.com

	2014 Group Net Rate	2015 Group Net Rate	2016 Group Net Rate
Groups	\$135.00	\$135.00	\$135.00

Terms & Conditions:

- Group Rates based on 10 guest minimum. Pricing per person.
- 5% GST will be added to rates
- Group admission rates are available to F.I.T. (fully independent traveler) customers
- Groups must book in advance a minimum of 2 days prior to arrival date to receive group rate
- FIT must book in advance a minimum of 2 days prior to arrival date to receive rate
- Rates valid to December 31, 2016, but are subject to change



RAPID FIRE THEATRE

Yuk it up, bust a gut, laugh your socks off! If you like your belly full of laughs you'll love Rapid Fire Theatre's barrage of improvised humour! Catch two weekly shows at Zeidler Hall: Theatresports—a hilarious comic competition complete with judges, and CHIMPROV—long form improvisation. You're also invited to the monthly throw-down, MAESTRO. With eleven improvisers on stage, and a spot saved for one lucky audience member, the cast competes for their chance at stardom and the winning title of Maestro. Is one night of improv not enough? Laugh yourself silly at funny-bone festivals such as BONFIRE, the Wildfire Festival for gutsy high school students, and the annual, international 10-day Improvaganza, Canada's biggest improv comedy celebration.

It's all laughs all the time for Edmonton's longest running improv comedy company. But don't just take our word for it—see for yourself! We've been dishing out guffaws for more than three decades in the form of high-energy improvisation, collaborations, theatre for young audiences, full-length plays and comedy workshops, and we have a drawer full of international awards to show for it.



BOOKING CONTACT

780-433-6044
www.RapidFireTheatre.com



RIVER VALLEY ADVENTURE CO.

Discover our beautiful Edmonton river valley as you glide effortlessly through the park on an amazing Segway. Explore Edmonton's scenic river valley—North America's largest urban parkland—with River Valley Adventure Co.! Guided Tours run all year long so you can enjoy our blooming spring buds, breathtaking, lush summer greenery, colorful fall foliage or our winter wonderland. Whether you are looking for a workout or just want to enjoy a leisurely ride, our top of the line Rocky Mountain bikes or MSR Snowshoes Tours allow you to explore over 480 km of trails throughout the river valley. Our very popular guided walking tours offer an informative and entertaining amble through nature.

Located downtown along the North Saskatchewan River and the spectacular TransCanada Trail, the longest continuous trail in North America, River Valley Adventure Co. makes for the perfect starting point to explore Edmonton's river valley. Our guides are the top Segway trainers in Canada and strive to ensure your tour experience is safe, fun, memorable and the highlight of your visit.

Services Offered	Retail 2014	Net 2014	Retail 2015/2016*	Net 2015/2016*
30 minute segway clinic	\$29.99/PP	\$25.00/PP	\$35.99/PP	\$25.20/PP
60 minute segway tour	\$49.99/PP	\$40.00/PP	\$59.99/PP	\$42.00/PP
90 minute segway tour	\$74.99/PP	\$60.00/PP	\$89.99/PP	\$63.00/PP
60 minute winter segway tour	\$49.99/PP	\$40.00/PP	\$59.99/PP	\$42.00/PP
60 minute snowshoe tour	\$20.00/PP	\$16.00/PP	\$25.00/PP	\$17.50/PP
90 minute bike tour	\$25.00/PP	\$20.00/PP	\$35.00/PP	\$24.50/PP
60 minute walking tour	\$20.00/PP	\$16.00/PP	\$25.00/PP	\$17.50/PP
Tour Guide Services				
	3 hour tour	Additional by the hour	Meet and Greet, Hospitality Desks, or other services (3 hour min. applies)	
English	\$200.00	\$50.00	\$35.00	
Other languages	\$225.00	\$55.00	\$40.00	



BOOKING CONTACT

Chris Szydowski
or Jana Szydowski
780.995.7347
Toll free: 1.877.433.7347
chris@rivervalleyadventure.com
www.Rivervalleyadventure.com

* Rates are subject to change

Terms & Conditions:

- Segway tours: participants must be 14+ years of age, over 60lbs and accompanied by an adult.
- Bike Tours: no children's bikes available for rental or tours.
- Taxes – 5%
- Minimum number of 2 participants
- For full details, please contact River Valley Adventure Co. directly.