

Little Ship Club  
(Queensland Squadron)  
ABN 31 009 823 590  
1 Yabby Street  
Dunwich Qld 4183

Phone 07 3409 9022

Post: PO Box 10, Dunwich Qld 4183

Website: [www.littleshipclub.com.au](http://www.littleshipclub.com.au)

Newsletter: [enews@littleshipclub.com.au](mailto:enews@littleshipclub.com.au)

# Little Ship Club

June 2015 eNews

LSC eNews  
PHOTO OF THE MONTH

# Straddie sunrise

LSC Members who've done the Monday morning 'dawn dash' back to the mainland (you know who we are) will appreciate why this image is painful to more than the eyes.

There's a unique ambience to our Little Ship Club corner of the One Mile, isn't there?

Dropping the pick on arrival can be just such an 'aahhh...' moment\* and we celebrate this special part of our world with our new eNewsletter.

*(\*Trying to weigh anchor after spending the weekend swinging to a few tidal rotations can be a different kind of 'aahhh...' moment, but let's not spoil the imagery for this first edition!)*

Photo: LSC eNews Editor Matthew Tesch



Commodore	Lyle Watkins	"Silhouette"	0419 704 382
Immediate-Past Commodore	John Nelson	"Loani"	
Vice-Commodore	Chris Goodhew	"Warrior"	0407 981 814
Rear-Commodore	David Cameron	"Midland Star"	0418 881 059
Director / Secretary	Roger McDowall	"2c"	0422 880 294
Director / Assistant Secretary	Gaye Morcombe	"2c"	0413 843 081
Director / Treasurer	Vacant		
Director / Membership	Karen Davy	"Silhouette"	0458 023 330
Fishing Captain	Col Barker	"Elizabeth"	0400 305 377
Game Fish Captain	Richard Bax	"Cabaret"	0417 722 790
Sailing Captain	Paul Coleman	"Restless"	0422 652 440
LSC photographer	HLM Pam Mobsby	"Alina"	
Naval Liaison/Protocol Officer	Allan Early		
QRBC Delegate	PC HLM Arthur Mobsby		
Club Managers	Bob & Dorothy Patterson	manager@littleshipclub.com.au	07 3409 9022

## ★ LSCalendar 2015-16

2015			
JUN	Jazz & Music Festival	LSC	Sun 7th
	Fishing Club weigh-in	LSC	Fri 19th - Sat 20th
JUL	Fishing Club weigh-in	LSC	Fri 17th - Sun 19th
AUG	Fishing Club weigh-in	LSC	Fri 15th - Sun 16th
SEP	Father's Day	LSC	Sun 6th
	Fishing Club weigh-in	LSC	Fri 25th - Sun 27th
OCT	Trophy Night	LSC	Sat 10th
	AGM	LSC	Sun 11th
NOV	Melbourne Cup	LSC	Tue 3rd
	Seafood Festival	LSC	TBA
DEC	Children's Christmas Party	LSC	Sat 12th
	Christmas Drinks with the Board	LSC	Sat 19th
	New Year's Eve	LSC	Thu 31st
2016			
JAN	Jib & Awning Race	LSC	Fri 1st
	Constitution Cup	LSC	Tue 26th
	Australia Day	LSC	Tue 26th
	Game Fishing	LSC	TBA
FEB	Valentine's Day	LSC	Sun 14th
MAR	Sunset Cocktails	LSC	Sat 26th
APR	Commodore's at Home	LSC	Sat 16th
	Anzac Day	LSC	Mon 25th
	Champagne Cruise	TBA	TBA
MAY	Mother's Day	LSC	Sun 8th
JUN	Jazz & Music Festival	LSC	Sun 12th

**For unique  
WEDDINGS,  
memorable  
ANNIVERSARIES  
and other special  
OCCASIONS,  
think "Little Ships"**

*Little Ship Club*  
**Phone 3409 9022**





## Commodore's report

The first thing you will have noticed opening this eNews is *it's changed* ... member Matthew Tesch ("Mistress") has volunteered to upgrade and produce the monthly eNews and you can't believe how much this helps Karen and your club. A huge thank-you, Matthew from me! A modern flip page document and updated format is just what we needed to refresh the eNews and present a professional publication. The website will be the next target in the next few months, as it is also very outdated and difficult to update.

I have said it before and I will say it again: how time flies; I have been on the board for 12 months now and Commodore for 9 months and I believe all the hard work that has been put in by all the board is rewarding. You may not see or think that your Board is productive but ... *Your / Our Club* is still trading and the doors are open.

I'm looking forward to this year's Audit. Speaking of which the club will be closed early Tuesday 30th June (probably by 3.00pm) as our Auditor will be in attendance at the club to supervise end of year stocktake, poker machine audit and cash on hand balances, as well as reviewing our MYOB files ... which I can say with a huge amount of certainty are accurate, very accurate. ☺

The Jazz Day went off without dramas, unlike last New Year's Eve. We had 341 people through the gate and the staff were kept busy all day. I would like to thank all the volunteers that helped on the gates and on glass duty, and Karen for ensuring that **all** of the \$1,705 gate takings were rung through the till. The kitchen staff also did a very good job by producing quality food very quickly: customers were commenting how quickly their meals were prepared and served. Well done, Chef John and staff! There was one pre-Jazz Day moment of excitement – one of the freezer compressor motors decided to give up. A quick response from Past Commodore Mal Parker and Will from Freezotec, who personally (in his own boat) delivered and installed a replacement on the Saturday morning. Thank you, Will and Mal. Also a big thank you to Jorgy from Stradbroke Wholesale Distributors for storing our frozen goods during the breakdown.



I would like to remind all members that membership fees are due by 30th June and if you haven't paid please do so, as it may be a factor as to whether or not your club makes \$1.00 this year (*if you don't know, that has been my target and is discussed at every board meeting*). Karen has been going to the club every weekend or Mondays and processing membership renewals and she is expecting a huge influx over the next couple of weeks so please don't disappoint her.

On a sad note, our burgee supplier Fox Flags' building and business was burnt to the ground recently and I understand that Daryl may not rebuild. It's sad to see a business of 30+ years close that way – especially when the fire was started in a car parked at the back of the building.

We still have a limited stock of burgees and are currently getting quotes from an alternate supplier; we will keep you informed on progress in the next eNews.

***While on the subject of eNews updates, we're going to have a closer look at the red beacon closest to the southwestern end of our pontoon and let you know.***

A keen-eyed observer has reported that the beacon appears to have been relocated by two or three metres. As we all know it has been getting very shallow next to this beacon – as a couple of boats have recently discovered.

Until this can be investigated further, please give this beacon a wide berth to the southwest (closer to the public jetty).

**Another volunteer needed: Karen is still wearing too many hats and we are urgently looking for someone to volunteer to be Honorary Treasurer.**

The books are squeaky-clean so you won't be inheriting a nightmare as we did. Our Club Book-keeper, Amanda from Stones Consulting, provides accurate reconciled reports each month and promptly processes Wages and Accounts every Monday. We have already had meetings with our Auditors and they are very happy with what we have and will be presenting them come 30th June.





## Commodore

**“It is NOT what your Club can do for YOU, but what YOU can do for YOUR CLUB.”**

All nominations for Honorary Treasurer should be forwarded to Director Honorary Secretary Roger McDowall (see Contacts on page 2).

The following are just some of the upcoming events. Many more are still in the planning. You can find

the calendar for 2015-16 on page 2 of this new edition.

- LSC Club Trophy and LSC Fishing, Game Fishing & Sailing Sections Trophy Night, Saturday 10th October 2015
- LSC AGM, Sunday 11th October 2015

Fly your burgee with pride.

**Lyle Watkins**

**Commodore**

June 2015 reports were received from:

- Commodore (pp.3-4)
- Membership (p.4 below)
- Managers (pp.6-7)
- Fishing Club (pp.8-11)

**PLEASE NOTE: the deadline for ALL JULY 2015 eNews material (Flag Officers, Board Members, LSC Members) is Monday 20th (advertisers: Monday 13th).**



## Membership report

**Members' FRIDAY NIGHT random draw now\***

**\$1,200**



\*As at 22 June 2015.

**Amount jackpots by \$50 each week if unclaimed on the night.**

Results reported in monthly LSC eNews are based on draw status on deadline, usually after the 3rd Friday of the month, and may change before or following eNews publication.

**Figures as at 20 June 2015:**

Currently 1,162 Financial members (an increase of 12 since the May eNews) including:

- 543 Full / Senior members (increase of six since the May eNews);
- 314 Associate members;
- 305 Social members.

We extend a warm June welcome to the following new Full members:

- John Hornabrook "XMT"
- Andrew Henriksen "Silver Lining II"
- Gregory McGuire "Speculari"
- Nigel Shaw "Serenity"
- Rayden James
- Warren Cuff

No past members returned to the Club in June 2015.



**Remember: your 30/06/2015 dated card is not valid after 30th June.**

You will not receive your member's discount, nor accrue or be able to redeem loyalty points on your purchases from 1st July until your renewal is received and processed.

Membership renewals are being processed promptly every weekend

**IMPORTANT NOTICE:** Membership renewal invoices have been posted to all Full and Associate members. If you do not receive yours please let me know—maybe we do not have your current address?

I can send you an interactive PDF form by return email, which you can complete online and then submit electronically.

Alternatively, you may use the form on p.16 of this eNews (print, complete, then scan/email or post).

Renewal / New member application forms are available from the Bar – or you can send an email to me at: [membership@littleshipclub.com.au](mailto:membership@littleshipclub.com.au)

And why not keep some application forms on hand in case you meet a potential new member?

Until next time,

**Karen Davy**

**Board Member / Membership**

Phone  
0458 023 330

Email  
[membership@littleshipclub.com.au](mailto:membership@littleshipclub.com.au)





# CARRINGTON's coming up – are you aboard yet?

**Saturday 11th July 2015**

Last year the flotilla of boats travelling upriver through the city and on up to the re-opened club created such a lot of interest and enthusiasm from Carrington members and other boating clubs, it's being repeated this year for wooden and traditional-style boats.

The hope is that this year will be just the start of a much larger-scale annual event – a flotilla display of Wooden and Classic boats which can be viewed and admired from vantage points all along the river, reflecting the proud boat-building heritage of the Brisbane River and the Southeast.

Low tide at the Brisbane Bar on the 11th is at about 1030–1100 hrs. Vessels are anticipated to start arriving at the initial rendezvous at Breakfast Creek/Newstead Park on the flood tide from about 1130, then continuing upriver from there at midday.

An informal\* cruise along the city reaches will join up with other boats for the more formal flotilla from St Lucia Reach (1300 hrs) onwards to Carrington Boating Club's facilities at Horace Window Reserve, Corinda.

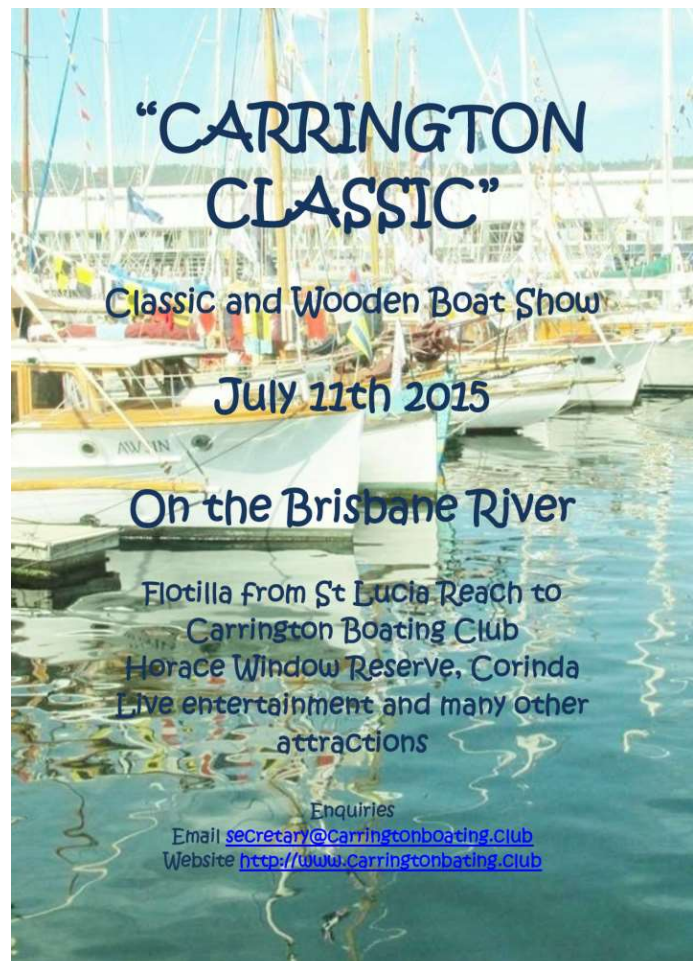
(\*The informal procession through the city reaches is to ensure free passage for the CityCats.)

As well as the flotilla cruise, smaller boats that may not wish to participate on the Brisbane River are invited to come to the Club as a static display on their trailer or hardstand for viewing by the public.

Food and entertainment will be available all afternoon and evening following arrival at the Club.

If any LSC members would like to attend and cruise in company please contact Membership Director Karen Davy as well as one of the Carrington officers (at right).

Carrington are always great hosts and know how to put on a terrific event with plentiful supplies of fantastic food. LSC Members are always made welcome so be sure to fly your LSC burgees and support this great little club!



**Carrington Boating Club Inc.  
Management Committee**

Commodore	Lindsay Juniper	0409 480 091
Vice-Commodore	Patrick Maguire	0451 947 882
Secretary/Treasurer	Jenny Newport	3379 5684
Members' Rep.	Bob Wood	0414 538 703
Maintenance Manager	Nick Newton	0412 711 487

## pelican's slipway cafe



- ☞ Local produce used in our all-day breakfast & lunch menu
- ☞ Fresh juices, shakes & coffee with great cakes cooked in our kitchen
- ☞ Spectacular views over Moreton Bay & famous Pelican Slipways
- ☞ Function room for business meetings, staff training & special occasions

**Kitchen open daily 7am to 2pm**  
reservations available for larger groups

**P** (07) 3829 2705 **E** pelicanslipways.200@bigpond.com

**293 Esplanade, Redland Bay QLD**



# ★ Managers' report

Our annual Jazz festival, held on Sunday 7th June, was a great success. We were fortunate enough to have a sunny day so patrons enjoyed a relaxing day out on the lawn while enjoying great music provided first by *Just Grooves*, then *Captain Dreamboat* and, finally, *Howlin Time*.

Chef John and staff were kept busy with the kitchen staying open from 12noon to 8pm to cater for the steady flow of patrons throughout the day.

Thank you to those who volunteered their time not only on the day but prior to the event. A special thank you to Jayden for all his work organising the bands and advertising.

If you weren't able to come this year, mark your calendar and join us next year!

## Staff birthday

*Jayden turned 18 in June 2015, and we wish him a very happy birthday from the management and staff and all the Members!*

Dorothy Patterson  
Manager LSC



- **BAR OPEN** Every day from 10am
- **BISTRO LUNCH** Wednesday to Sunday
- **BISTRO DINNER** Wednesday to Saturday
- **FUNCTIONS** welcome
- **PRIVATE DINING** bookings
- **TOUR BUSES** welcome
- **WEDDINGS** our speciality
- **FAMILY EVENTS** for kids of all ages
- **BOOK OR ENQUIRE** today: phone 3409 9022



Like us on Facebook and check out our posts updating you with the latest "What's On at the Club."



07 3245 7022 **Tyrepower**  
Capalaba Call Us Today!  
07 3245 7022

**Little Ships Club Members**

\*\*\*\*DISCOUNTS APPLY\*\*\*\*  
**MENTION OUR ADVERTISEMENT**

**Call your LSC member Scott Inglis**

Independently owned & operated  
We stock all major brands of Wheels & Tyres

**93-95 Redland Bay Road, Capalaba**

07 3245 7022 **Tyrepower**  
Capalaba Call Us Today!  
07 3245 7022

**FREEZETEC**  
MARINE REFRIGERATION & AIRCONDITIONING

Shop 9, 7-9 Great Street  
Cleveland QLD 4163  
Phone: 07 3286 3372  
Fax: 07 3286 2387  
www.freezotec.com.au  
manager@freezotec.com.au

**Specialists in**  
**Custom Made Refrigeration**

Electric Refrigeration      12v Systems  
Custom Cabinets      Built to suit your requirements

**Sales and Warranty Agents For**

**fruisair**  
Marine  
Air Conditioning

**U-LINE**  
Ice Makers

**WAECO**  
mobile solutions  
Portable Fridges  
and Accessories

**NOVA KOOL**  
Fridge and Freezers

**COM-MAND**

Marine and Caravan  
Air Conditioning

SALES · INSTALLATION · SERVICE





# Vazz & Music FESTIVAL



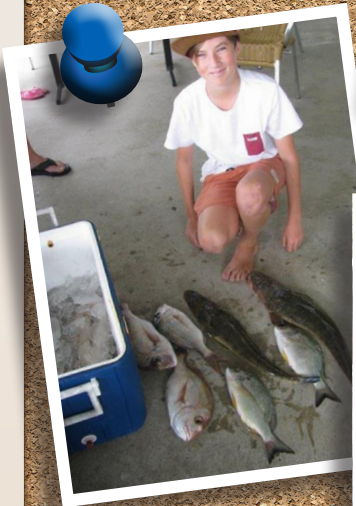


# ★ Fishing Club

Proud sponsor



LSC Fishing Club





On the weekend of Friday 29th and Saturday 30th our second attempt to hold the May Fishing weekend was successful, with much better weather.

A good fishing weekend was held by Vice-Captain Maureen Allery in my absence, with about 10 weigh-ins. Boat Points went to Lance Magnussen. Paul De Bono scored well with a mixed bag and daughter Emily (junior) weighed in the only Whiting. No Morwong were caught.

Jason Ninnes and his (junior) Jack scored the most points. There was a good catch of crabs weighed-in.

**Col Barker**  
**Fishing Captain**

*"Elizabeth"*  
0400 305 377



**Become a member of the Little Ship Fishing Club: it's a great opportunity to join in the fun and meet fellow LSC Club members in a very informal family atmosphere.**

**Adults and kids of all ages are always welcome. Great prizes awarded at the Annual Trophy Night in October.**

*Please note: Entry and participation in the Little Ship Fishing Club is at the skipper's discretion.*

*Weather may prevent the event from being held on the date/s advertised. Please call Col to confirm.*

## Your first port of call is Millkraft ... for all your boat repair and repaint needs.

We can accommodate repairs and maintenance to timber and fibreglass vessels to a maximum of 30 metres. We have facilities to carry out refit, fit-outs, antifouling, painting and repaints. Travel lift facilities are available as is our undercover work area at Shed 3/28 Wyuna Court, Hemmant.

Peter Hardisty owns and operates Millkraft Boat Yard Pty Ltd. Peter has worked in the boatbuilding industry for over 40 years since being apprenticed in 1970.

If your boat needs some repairs or a repaint, **call Peter on 0418 155 921 or 3893 2263** or email [millkraftboatyard@bigpond.com](mailto:millkraftboatyard@bigpond.com)

MILLKRAFT BOAT YARD PTY LTD  
is a proud sponsor of the LSC Fishing Club.



**REPAIRS • MAINTENANCE • REFITS • PAINTING • SPRAYING • SLIPPING FACILITIES AVAILABLE**



# ★ Fishing : June weigh-in

Another good weigh-in (19th-21st) was held despite the cold, unpredictable weather.

Boat points were taken by Col Barker "Elizabeth" (yes, the old man is back!) with the other awards and prizes being:

## Fish of the Month:

Bream, won by Jason Ninnes  
 Tailor, won by Col Barker.  
 Mud Crab: Lachlan Roberts  
 Sand Crab: Ashley Roberts

*These Juniors are consistent.*

*Definitely tomorrow's champions!*

**Crew of the Month** – nil (too cold!)

**Raffle** 1st Jane Rutherford

2nd Karen Davy

3rd Cameron Jones

**Next competition is on 17th-19th July**  
 when the Fish of the Month will be  
**Bream and Snapper.**



Traditional & Digital Signage

## Straddie Signs

Peter Jackson  
**0409 617 540**  
 straddiesigns@optusnet.com.au

Vendor to Sibelco  
 No: STR 1060  
 15 Bingle Road, Dunwich

- Vehicle graphics
- A-frames & Corflutes
- Banners & Stencils
- Vinyl lettering
- Perspex cut to size
- Timber engraving
- Reception signs
- Safety signs
- 3D & Styrene lettering
- Digital printing, stickers
- Posters
- Event signage



## pelican slipways



- Ⓜ Professional boat builders with combined experience of over 40 years
- Ⓜ Catering for traditional and modern boat maintenance, repair & refurbishment
- Ⓜ Full project management of all marine trades, including engineering, electrical & fabrications
- Ⓜ Slipping boats up to 50 ft and 40 tonne; multi-hull friendly

### Contact us

P (07) 3829 0620 E [pelicanslipways.200@bigpond.com](mailto:pelicanslipways.200@bigpond.com)

W [www.pelicanslipways.com](http://www.pelicanslipways.com)

**Weinam Creek, Redland Bay QLD**



Thanks to Karen Davy, and to those who preceded her, for keeping the LSC newsletter afloat, with much passionate volunteer commitment, on our behalf.

In recent months, I registered with some anguish the virtual orange smoke, and growing stridency of her published 'PAN calls' for newsletter assistance but was hindered in responding until now by design work commitments.

Early memories of the LSC are of coming ashore from "Mistress" for a tall "ras'-and-lemonade" at the Club in the mid-'60s.

Back then, the little creek still flowed freely into the One Mile at the foot of the cemetery, and a walk into Dunwich for a loaf of hot, fresh bread and a hessian bag of burning-cold block ice meant keeping a wary eye on the cattle grazing among the headstones.

Lines parted in 1985, with the passing of my dad Colin, and the sale of the boat after 30 years on the Bay. Rare day visits to Straddie by barge thereafter invariably included a wistful stop at the One Mile.

Another 30 years later, curiosity finally won and I sought out and rediscovered "Mistress" in 2004, and flew to far north Queensland to meet her then-owners on the occasion of her 50th birthday.

Seven years of maintained contact later, and after her near-death experience with STC Yasi's storm surge in 2011, "Mistress" came home – but that's a story for another time – and the LSC connections renewed.



I guess that, if there's a point to this introductory ramble, it's the pleasant rediscovery that 'our little club' is still here – as it has been for the whole of my lifetime – but that this is not something we should be taking for granted.

Try out the new email address to get in touch with your ideas, stories, news and contributions – [enews@littleshipclub.com.au](mailto:enews@littleshipclub.com.au)

Deadlines for the July edition are Wednesday 15th (advertising review and bookings – to Karen) and Wednesday 22nd (photos, reports, stories and news – to me, please). Cheers until next month, then.

**Matthew Tesch**

## Our available floating plant includes:

- 3-in-1 Survey Work vessels – suitable for all marine works
- Gosford 25m crane barge – suitable for pile-driving and salvage & demolition works
- Todkill's Barge 12m – suitable for piling works
- 6 service barges

*Note: all our vessels/barges are in compliance with Marine Safety Certification in accordance with the National Standards for Commercial Vessels NSCV Code.*

*Incorporated authority approved by MSQ through our Safety Management System.*



### Contact us:

Angie Todkill - Office: 07 3821 2227

Phillip Todkill - Director: 0407 156 577

25 Mainroyal Court, Raby Bay

Email: [towingandmarine@bigpond.com](mailto:towingandmarine@bigpond.com)

Web: [www.marinecontractingqld.com.au](http://www.marinecontractingqld.com.au)

A photograph of a large red crane barge at a port. The barge has a large red crane structure. In the background, there is a white and red tugboat with "BIG RED CAT" and "1800REDC" visible on its side. The scene is set in a harbor with other boats and structures.

Trading as Towing and Marine Services Pty Ltd • ABN: 80 141 395 771

• PILE-DRIVING • PILE-DRILLING • WHARF, JETTY & MARINA CONSTRUCTION • WHARF DEMOLITION • MARINE SALVAGE • VESSEL TOWING •





- *SPECTACULAR Waterside Location*
- *IDEAL Function Location*
- *PERFECT Setting for Families*
- *SENSATIONAL Entertainment Venue*

**BISTRO MENU:**

Wednesday  
 Dinner -  
 Parmy Night



Thursday Dinner -Pasta Night  
**STANDARD BISTRO MENU** available  
 Wednesday to Sunday Lunch

**FRIENDLY BAR SERVICES!**



Just the place to catch up with Old Friends!  
**IS THIS THE MOST SPECTACULAR LOCATION ON THE EAST COAST?**

Club hours: From 10am daily Monday - Sunday  
 Bistro Hours: Monday and Tuesday Closed;  
 Wednesday - Saturday Lunch 12 noon - 2 pm;  
 Dinner 6pm - 8pm;  
 Sunday - Lunch only 12noon - 2pm

Supporting **ZERO TOLERANCE**



**BE AT THE CLUB FOR:**

FRIDAY NIGHT RAFFLE 7.15pm  
 WEEKLY MEMBERS DRAW 7.30pm (members must be present to collect).  
 PLAY GROUND and LARGE LAWN AREA for children.



FUNCTION ROOMS and BBQ AREA available for hire.  
 IDEAL for Weddings, Birthdays and Special Occasions.

One Mile, Dunwich,  
 North Stradbroke Island PH: 3409 9022

★ **Tacklebox**

A new column, in which we'll bring you news of any boating products or developments which are brought to the Editor's attention, and which we think will be of interest to readers and LSC Members.

Karen Davy sets us a good example this month, to get things rolling, with news of **Life Cell** – a floatation device designed to reduce potential loss of life at sea, by ensuring all safety equipment is contained in one place when abandoning ship is the only option. Made from closed-cell PU foam and constructed from UV-resistant flame retardant polyethylene (PE), each Life Cell is supplied with a PE mount bracket and is designed to automatically float from the bracket in the event of being submerged.

Unlike grab-bags, the Life Cell floats, providing a secure and hi-vis hand-hold to keep survivors together, and a stable platform to assist in the deployment of flares and other safety equipment. Life Cell stores all essential safety gear including EPIRB, flares, V-sheet, whistle, air horn, torch and mirror.



Life Cell comes in four different sizes and configurations for many types of boats – from 2-person runabouts to up to 8 crewmembers per unit on commercial vessels. RRP starts around \$345 for the 2-4 person unit. Now part of the BLA range, you can check out Life Cell at NU Bolt & Hose Supplies' marine chandlery at Cleveland.



**Bolt & Hose Supplies**

**Karen Davy**

Shop 18/63 Shore Street West,  
 Cleveland Qld 4163  
 Sales Fax: (07) 3286 9008  
 Accounts Fax: (07) 3286 7470  
 P O Box 1092, Cleveland Qld 4163  
 Email: [karen@nubolthose.com.au](mailto:karen@nubolthose.com.au)

Phone: **3286 9077**

Bolts  
 Nuts  
 Screws  
 Hose  
 Valves  
 Fittings  
 Cleveland





## CLASSIFIEDS / DIRECTORY – NEW!

If you've got something to sell, or something simple to say, then a few lines in this new section could do the job. Want to trade, swap or buy something? Reach your fellow LSC Members and readers here! Up to 5 lines (like this) for just \$5 / month (Members) or \$10 / month (non-Members).

And, at \$10 / month (\$15 non-Members) for 6-10 lines, and \$15 / month (\$20 non-Members) for 11-15 lines, this is an easy way to buy, sell, swap, get rid of that unwanted gear – or simply and economically promote your skills or small business to an interested readership.

Entries are limited to 1-3 listings (15 lines maximum) per person per eNews monthly edition, and may be edited for space reasons. The Editor reserves the right to review, amend or reject listings not regarded as appropriate for the eNews readership or the Little Ship Club.

Entries will be typeset as indicated here, with bold and italic options available for accent at no cost. Colours, logos and graphics are not available for private or business advertisers in the LSClassifieds, but an exception may be made for nonprofit, school or community groups, etc, at the Editor's discretion.

For more info about the new LSClassifieds section, or to find out more about eNews advertising opportunities and obtain a copy of the new rate card, please call Karen Davy on 0458 023 330 or send an email to: [membership@littleshipclub.com.au](mailto:membership@littleshipclub.com.au)



- Sea-lift (boats to 60ft) • Chandlery • Boat storage
- Slipway : mono/multi-hulls, houseboats & trimarans
- Hardstand facilities, service area and refit sheds
- Shipwrights and mechanical repairs



Phone: 07 3207 7506 Fax: 07 3207 9334

Email: [masthead@bigpond.net.au](mailto:masthead@bigpond.net.au) Web: [redlandcitymarina.com.au](http://redlandcitymarina.com.au)

Redland City Marina is located at: 100 Beveridge Road, Thornlands Q 4154

Your image could be the front cover of the July issue

LSC eNews PHOTO COMPETITION

PLUS 1,000 points credited to your Member account to spend at the Club on your next visit!

Theme for July:

**“Winter morning at the One Mile”**

Entries close Wednesday 22nd July 2015

Email: [enews@littleshipclub.com.au](mailto:enews@littleshipclub.com.au)

Simple conditions of entry:

1. Open to LSC Members only; entries must be your own original work or that of an immediate family member.
2. Entries must be of suitable resolution / file size to allow good reproduction at front cover size and must address the theme nominated for the month.
3. Each Member may submit up to 3 images per month, with a maximum file size of 2MB (single image or total email).
4. The eNews Editor's sole decision about the winning entry will be final and neither inducements at the bar nor any other form of correspondence will be entered into.
5. Winner's points will be advised by the Membership Director separately on publication of the next eNews.
6. Winning entry title and photographer's name will be shown on the cover image; if space permits in the next edition, a selection of shortlisted entries will also be published.



# LSC Member prices

Current as at 1st June 2015

Membership Fees <sup>^</sup>	Price
New Full Membership Fee (including Joining Fee)	\$260.00
Full Member - Annual Membership Fee (Renewal)	\$210.00
Senior Rate (Full Member Fee less 50% discount)*	\$105.00
Associate Membership - Annual Membership Fee**	\$20.00
Social Membership - Annual Membership Fee	\$20.00
Club Member items	Price
Burgee – large (for vessels >13m LOA)	\$55.00
Burgee – small / medium (vessels <13m LOA)	\$45.00
Club tie	\$20.00
Club T-shirt	\$12.50
Club Polo shirt (adult)	\$39.50
(\$5.00 Member's discount)	\$34.50
Club Polo shirt (kids)	\$23.00
Stubby cooler	\$7.50
Club cap	\$12.50
Key-ring (floating)	\$2.50
Security Token (Deposit) – Members***	\$30.00
Security Token (Deposit) – Guests / Temporary Visitors (Refunded on return of token minus \$10 Services Fee)	\$50.00

Please note:

\*You need to have been a member of the Club for 15 years or more and be aged 65 or over.

\*\*Associates must be attached to a Full or Senior Membership.

\*\*\* Members Security Tokens are for Full, Senior & Associate Members' use only.

<sup>^</sup>Pro-rata membership is available from time to time at the discretion of the LSC Board.

## IMPRESSUM

This eNews is published monthly by the Little Ship Club and produced by the volunteer efforts of LSC Members for the information of their fellow Members and interested visitors and advertisers. Any opinions expressed in the content of this and any other editions of the eNews are the personal views of the author/s or contributor/s and may not reflect the official views of the Little Ship Club.

Little Ship Club (Queensland Squadron) ABN 31 009 823 590  
PO Box 10 (1 Yabby Street) Dunwich Qld 4183 Phone 07 3409 9022

### ADVERTISING / MEMBERSHIP enquiries

Karen Davy / 0458 023 330 / [membership@littleshipclub.com.au](mailto:membership@littleshipclub.com.au)

### EDITORIAL / DESIGN enquiries

Matthew Tesch / 0406 777 077 / [enews@littleshipclub.com.au](mailto:enews@littleshipclub.com.au)

**MOBILE PROPSPEED**  
Gain speed and save fuel.  
Call Luke Steele:  
**0408 692 124**  
Silicone Treatment Authorised Applicator

**WHO KILLED KENNY**

PROUD TO BE ASSOCIATED WITH A GREAT VENUE LIKE LITTLE SHIP CLUB.  
\*WEDDINGS  
\*BIRTHDAYS  
\*DIVORCES  
\*ANY EXCUSE FOR A PARTY  
Ph 07 3805 1056

## IMPORTANT NOTICE TO LSC ENEWS ADVERTISERS

All existing eNews bookings will be reviewed from 1st July 2015 before the next issue deadline on 15th July. Current advertisers will need to discuss their arrangements; interested new advertisers are welcome to contact.

NEW RATE CARD prices, sizes & options for the period 1st July – 31st December 2015 AVAILABLE NOW.

Please contact Karen Davy on 0458 023 330 for updated info and/or email [membership@littleshipclub.com.au](mailto:membership@littleshipclub.com.au)







# LSC pontoon and moorings

## LITTLE SHIP CLUB PONTOON USE RULES

Access to a Pontoon is subject to the rules put in place by the Board of the Little Ship Club (Club) at the time, seeking to maximise the use of the pontoon to meet the objects of the Club. Access to the Club pontoons is not a Constitutional right of any Visitor, or visiting Member and is at the discretion of the Board (or Delegate) of the Club.

If requested by the Manager the Visitor must sign a formal agreement to access the pontoon.

A booking must be made with the Manager to use the pontoon and confirmed 24 hours prior to arrival. Failure to confirm will result in automatic cancellation. Casual and overnight berthing are available; both forms of use are subject to the following rules:

- Advance bookings are for one night only (additional nights are at the discretion of the Manager).
- After berthing, in all circumstances, visitors must report arrival to the club's Manager.
- If leaving the premises the Visitor must inform management and accept the **Acknowledgement\*\*** below.
- Complimentary use of the pontoon is STRICTLY for current Full financial visiting Members of the Club.
- A **Mooring Fee\*** will apply to all non-Member visitors. Any fees are to be paid in advance or upon arrival and are non-refundable.
- Vessels must have insurance (Third Party minimum) and provide a copy of the currency certificate to the Manager.
- Visitors using the pontoon must be prepared to raft with other vessels.
- Visitor Members must display an LSC burgee while in occupancy of the pontoons at all times.
- Visitors using the pontoon do so at their own risk.
- Mooring of the Visitor vessel must maximise access for other vessels.
- Other users of the pontoon are to be treated with courtesy and respect.
- Children will be supervised at all times and no animals are permitted on the pontoon or grounds.
- Visitors will sign in as required under Licensing Law.
- Noise is to be kept to a minimum.
- No alcohol is to be brought onto Club premises.
- Tenders are to be tied on the landside of the pontoon (maximum one per Visitor vessel).
- Water to be used for domestic purposes only.
- No major vessel repairs may be undertaken on the pontoon.
- The pontoon purpose is for the Visitors to use the Club, not as a marina for boat storage/provisioning.

Breaches of the rules may lead to withdrawal of a Visitor/ Visitor Member's pontoon access rights.

### \*Pontoon Mooring Fees per part day / day

Large pontoon	Side pontoon
\$50 for <10m LOA	\$25 for all vessels
\$75 for 10-15m LOA	
\$100 for >15m LOA	

These fees are applied at the discretion of the Manager; being Duly Delegated by the Board.

### \*\*Acknowledgement by the Visitor

At the direction of the Manager (or an authorised representative), the Visitor in charge of the vessel must be prepared to:

- Position and/or reposition the vessel, or allow management to position and/or reposition the vessel at any point along the pontoon.
- Depart the pontoon prior to 1000 hrs on the day following arrival.
- Allow smaller vessels to 'raft up' to the vessel, provided they have adequate fenders/lines, or raft up larger vessels at times of high demand.
- Limit power usage at times of high load.
- Depart or relocate the vessel in the event of storm or adverse weather conditions.

The Manager of the Club is delegated the authority to enforce these rules and rules may be amended at the absolute discretion of the Board and Management of the Club from time to time.

## GUIDELINES FOR FULL MEMBERS' USE OF LITTLE SHIP CLUB SWING MOORINGS

1. Use of moorings is STRICTLY for current Full financial Members of the LSC.
2. Members using the moorings must display the club's burgee.
3. Bookings of moorings are required and vessels that have booked must be on the mooring by 1300 hrs on the day of the booking.
4. Failure to tie up by that time means that the mooring is vacant and then it is on a first come first served basis. In other words it is declared vacant after 1300 hrs. However after tying up, in all circumstances Members must report their presence to the club's Manager.
5. Members arriving before 1300 hrs and seeing a vacant mooring need to check with the Manager to ascertain if it is free.
6. Bookings can be made for a maximum of 2 nights and must be confirmed by contacting the Manager 24 hours before the date required. Failure to confirm the booking means that the booking is cancelled and the mooring is open for use by other members.
7. Members using the mooring must vacate by 1200 hrs unless booked for use on that day.





# Membership 2015-16

**Little Ship Club (Queensland Squadron)**  
Club address: 1 Yabby Street, Dunwich Qld 4183  
Phone 07 3409 9022

ABN 31 009 823 590  
Postal address: **PO Box 10, Dunwich Qld 4183**  
Email [membership@littleshipclub.com.au](mailto:membership@littleshipclub.com.au)

*Note: even if you are renewing an existing membership, please complete all fields below to ensure we have your current details. If you are completing this form in hard copy, to scan/email or post, please print clearly.*

This application is a  **NEW**  **RENEWAL** Membership  
Date \_\_\_\_ / \_\_\_\_ / \_\_\_\_ Renewals only: LSC Member number

## MEMBER and VESSEL details

Title  Mr  Mrs  Ms  Miss  Other (please specify) \_\_\_\_\_

First name \_\_\_\_\_ Surname \_\_\_\_\_

Address \_\_\_\_\_

Suburb \_\_\_\_\_ State \_\_\_\_\_ Postcode \_\_\_\_\_

Telephone (M) \_\_\_\_\_ (H) \_\_\_\_\_ (W) \_\_\_\_\_

Date of birth \_\_\_\_ / \_\_\_\_ / \_\_\_\_ Email \_\_\_\_\_

Associate Member name (if applicable) \_\_\_\_\_

Other club memberships? (please list) \_\_\_\_\_

Emergency contact name \_\_\_\_\_ Phone \_\_\_\_\_

Vessel name \_\_\_\_\_ Length (LOA) metres \_\_\_\_\_

Vessel type (tick)  Light power craft  Motor cruiser/yacht  Sail  Monohull  Catamaran  Trimaran

Vessel insured by \_\_\_\_\_ Policy number \_\_\_\_\_

## MEMBERSHIP and OPTIONS prices

Full Member Renewal (Annual) \$210.00  Full Member New (including Joining Fee) \$260.00

Senior Member Renewal (50% discount)<sup>1</sup> \$105.00  Pro-rata Membership (Full Members ONLY)<sup>2</sup> \$

Associate Member (Annual)<sup>3</sup> \$20.00  Social Member (Annual) \$20.00

Add if required  Security Token deposit<sup>4</sup> \$30.00 (to access pontoons, laundry, showers, and after-hours front door entry)

LSC Burgee  \$45.00 (vessels <13m LOA)

\$55.00 (vessels >13m LOA)

**TOTAL AMOUNT \$**

## PAYMENT methods

 We accept cash, personal cheque<sup>5</sup>, bank cheque<sup>5</sup>, money order<sup>5</sup>, EFT<sup>6</sup> or credit card<sup>7</sup> payments.

In person @ LSC (this completed form **must** accompany your payment at the Club)

By EFT<sup>6</sup> to BSB 484-799 Account 044932641 Little Ship Club Date EFT payment made \_\_\_\_ / \_\_\_\_ / \_\_\_\_

By credit card<sup>7</sup>  Visa  Mastercard I hereby authorise the total amount (above) to be charged to my nominated credit card.

Name on card \_\_\_\_\_

Card number             Expiry   CCV #

Signature (if completing by hand) \_\_\_\_\_ Date \_\_\_\_ / \_\_\_\_ / \_\_\_\_

### IMPORTANT – please note:

- <sup>1</sup> You need to have been a member of the Club for 15 years or more and be aged 65 or over.
- <sup>2</sup> Any pro-rata amount for FULL Memberships will be advised at the discretion of the LSC Board.
- <sup>3</sup> Associates must be attached to a Full or Senior Membership.
- <sup>4</sup> Members' Security Tokens are for Full, Senior and Associate Members' use only.
- <sup>5</sup> Cheques accepted subject to normal bank clearance processes; please make payable to "Little Ship Club Qld Squadron".
- <sup>6</sup> In the transfer reference field, state [NEW surname] for new applications, or [member ##### surname] if renewal.
- <sup>7</sup> Visa or Mastercard only, please, or EFTPOS at the bar.

## SUBMIT application

 This completed form **must** be returned, either:

- in person @ LSC, 1 Yabby Street, Dunwich
- by post to LSC, PO Box 10, Dunwich Qld 4183
- by scan/email to [membership@littleshipclub.com.au](mailto:membership@littleshipclub.com.au)
- online\* click the green 'submit now' button (Note: 'Save As' the PDF\* to retain a file copy)  
(\*Available only on the interactive PDF form)

**LSC Office use only**

Date paid \_\_\_\_ / \_\_\_\_ / \_\_\_\_

Updated info \_\_\_\_ / \_\_\_\_ / \_\_\_\_

Card issued \_\_\_\_ / \_\_\_\_ / \_\_\_\_

Mailchimp checked \_\_\_\_\_

Security Token number \_\_\_\_\_

Processed by \_\_\_\_\_

Date completed \_\_\_\_ / \_\_\_\_ / \_\_\_\_

1381LSC\_IMDC\_App-Normal\_2015\_v1

CLEAR FORM

SUBMIT FORM

