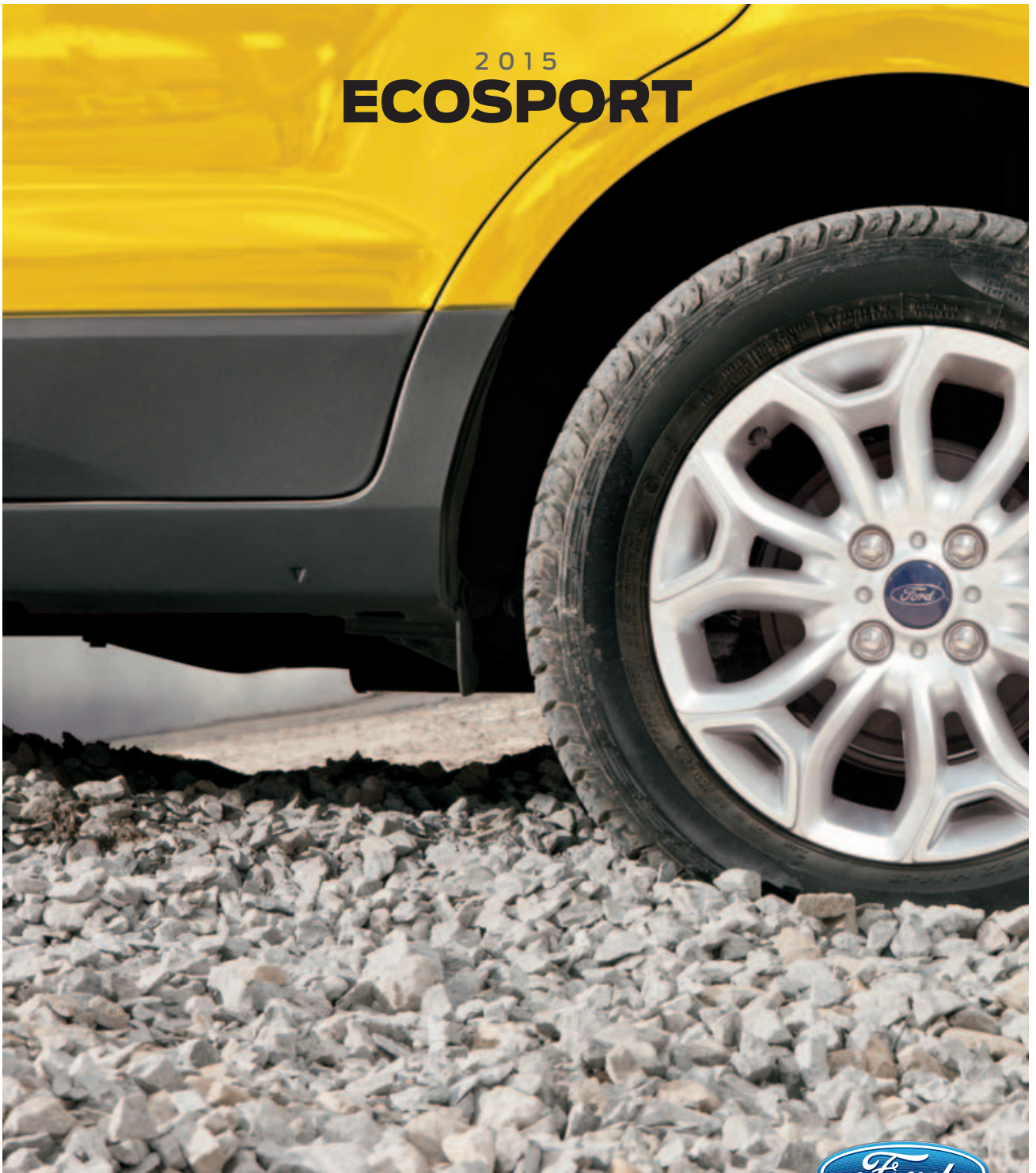


2015
ECOSPORT



Courtesy of Ford Motor Company



Go Further



It's been at the back of your mind for a long time now. Silently nagging away. Gnawing at your subconscious.

You want something new. Something different. A car that feeds your imagination.

Titanium. Mars Red Metallic. Available equipment.

Where imagination becomes reality.

EcoSport is new. Different. Imaginative. Designed from the ground up with driving fun in mind. Smaller, more maneuverable and – with a responsive 1.5L petrol engine and a choice of manual or automatic transmissions – more fuel-efficient than conventional sport utility vehicles.



Titanium. Panther Black Metallic. Available equipment.

In great shape.

Making a sport utility vehicle aerodynamic is a challenge. This is why the EcoSport design team spent 160 hours in a wind tunnel tweaking a millimeter here and a millimeter there to optimize airflow. And it is why they spent a further 10,000 hours on computational fluid dynamics to find the perfect silhouette. This meticulous attention to detail has resulted in a drag coefficient of only 0.37, helping EcoSport slip through the air with fuel-saving efficiency.

One size fits all.

At just 3,998 mm long and 1,765 mm¹ wide, EcoSport only takes up a small footprint. This makes it ideal for parking in confined spaces on busy city streets. But compact on the outside doesn't mean squeezed on the inside. EcoSport can comfortably accommodate 5 adults with ease – plus, with a best-in-class luggage capacity of 705 L² it can swallow up their belongings too.

Made to measure.

Driving along narrow city streets can be a daunting proposition in a conventional sport utility vehicle. This is precisely where EcoSport is designed to excel. In addition to its compact dimensions and commanding view out, EcoSport also comes with the advantage of electric power-assisted steering (EPAS). EPAS delivers full power for effortless maneuvering at parking speeds, and steadily weights up for optimum comfort and feel once you're on the move.

¹Excluding sideview mirrors.

²With rear seats folded and tumbled forward. Measured in accordance with the VDA method.



Commanding respect.

Raised ride-height means you enjoy a commanding driving position in EcoSport, with the additional benefit of a great view out. It also gives you 200 mm of ground clearance for crossing speed bumps and potholes – and the 550 mm wading depth may come in handy when confronted by wetter obstacles. Remote Control Locking, cruise control¹ and power windows add to the overall feeling of comfort and convenience.



6 SPEAKERS¹

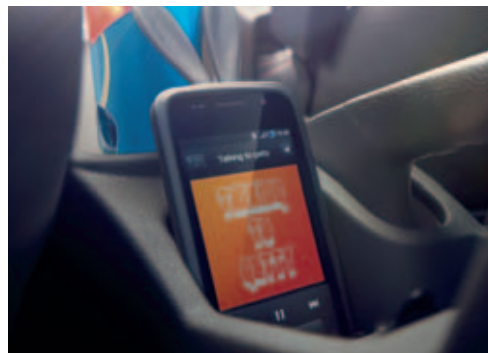


6 AIRBAGS¹

FOLD-FLAT  2ND ROW

Titanium. Available equipment.

¹Available feature.



In tune with you.

Voice-activated Ford SYNC^{®1} helps you stay connected wherever your EcoSport takes you. With SYNC, there's no more searching for your phone. No device on your ear. Once paired, SYNC recognizes your phone and automatically transfers your contacts to support voice calling.

SYNC even lets you continue your mobile phone conversation as you get into your EcoSport – without the need to hang up – because the system instantly connects to your phone once you start the car. It also plays music from your phone, MP3 player or USB.

¹Available feature. Driving while distracted can result in loss of vehicle control. Only use mobile phones and other devices, even with voice commands, when it is safe to do so. Not all features are compatible with all phones.

| SYNC

Titanium. Moondust Silver Metallic. Available equipment.





Making driving more fun.

Imagine a car that unlocks automatically as you pull on the door handle – and then lets you start the engine at the touch of a button. You've just imagined our keyless entry and push-button start.¹ With this technology, all you need is the correct key fob in your possession to get in and start your car.

¹Available feature.

Do you ever wish you had a high-tech automatic transmission that could save fuel and reduce CO₂ emissions compared to a conventional automatic? Our advanced PowerShift 6-speed automatic transmission¹ with SelectShift[®] capability does exactly that – and even allows manual shifts should the mood take you.

Have you ever conjured up images of a car interior that has been carefully designed with daily use in mind? How about features like a cooled glove box which can keep up to 6 beverage cans chilled, so you're unlikely to ever get thirsty on a long trip? Or maybe shopping hooks in the luggage area to help secure your purchases when you're on the way home? Or more than 20 different storage spaces to keep things tucked away?

Do you like the idea of air conditioning as standard? Or the availability of electronic automatic temperature control,¹ which lets you adjust the temperature to your preferred setting? And how about an Anti-Lock Brake System (ABS), Electronic Stability Control (ESC)¹ and up to 6 airbags?¹

If you do, take a look at what EcoSport has to offer...



EcoSport Specifications

Standard Features

Mechanical

- Anti-Lock Brake System (ABS) (manual transmission)
- Anti-Lock Brake System (ABS) and Electronic Stability Control (ESC) with hill launch assist (automatic transmission)
- Battery saver
- Electric power-assisted steering (EPAS)
- Front stabilizer bar
- Power front disc/rear drum brakes

Seating

- 2-way manual front-passenger seat
- Front-passenger seat slide-out storage drawer
- 2nd-row 60/40 split-fold seat

Interior

- Center console
- Console ashtray
- Cooled glove box
- Driver and front-passenger sun visors with vanity mirrors

- Headlamp leveling control
- Load compartment tie-downs
- Power door locks
- Steering column reach/rake adjust
- Theater-dimming lighting

Exterior

- Body-color front and rear upper bumpers with self-colored lower bumpers
- Emergency brake light (flashing brake light)
- Front and rear tow loops
- Heated rear window
- Laminated windshield
- Power sideview mirrors with turn signal indicators and integrated blind spot mirrors
- Power swing-gate release
- Rear fog lamp
- Rear intermittent wiper
- Tinted glass

Safety & Security

- 2-way adjustable outboard head restraints
- 3-point safety belts
- Airbags² – Single-stage driver and front-passenger front
- Child-safety rear door locks
- Engine immobilizer
- ISOFIX hard-point attachments (outboard rear seats only)
- Side-intrusion door beams

Engine & Dimensions

Net Horsepower & Net Torque

1.5L Ti-VCT I-4 Engine

- 110 net hp @ 6,300 rpm
- 105 lb.-ft. of net torque @ 4,500 rpm

Exterior (mm)

Wheelbase	2,521
Length	3,998
Height	1,645
Width – Excluding mirrors	1,765
Width – Including mirrors	2,057

Interior	Front/Rear
Head room	1,008/971
Shoulder room	1,355/1,302
Leg room	1,043/956

Capacities (liters)

Cargo volume behind front seats	705
Cargo volume behind rear seats	362



Trend in Mars Red Metallic customized with roof crossbars, headlamp protectors, smoked side window deflectors and roof-mounted bike carriers by THULE^{®1}

Sports pedal covers

Carpeted floor mats

Trunk tray

Hood protector

Exterior

- Mud guards
- Racks and carriers¹
- Rear spoiler
- Spare wheel cover¹
- Trailer towing accessories
- Wheel lock kit

Interior

- Cargo organizers and protectors
- Door-sill plates

Electronics

- Bumper-mounted warning sensor systems¹



accessories.ford.com

¹Ford Licensed Accessory.

Availability varies by market. THULE is a registered trademark of Thule Sweden AB.

²Always wear your safety belt and secure children in the rear seat.

The images in this brochure depict selected models of the vehicle. They have been chosen to give a general overall impression of the vehicle and may include features or optional equipment not necessarily released for use in any specific market. The specifications detail the models and features available in your market and were correct at the time of printing. Ford Motor Company's policy is one of continuous product development. Therefore, Ford reserves the right to change the specifications and colors of any models and items shown in this publication at any time. It is important to check with your local Ford Dealer for the latest information on models available for order in your market. Comparisons are based on competitive models (class is B-SUV Mini Utility), publicly available information and Ford certification data at time of printing.

Ambiente & Trend



Trend. Kinetic Metallic. Available equipment.

Underseat storage, door pockets and cooled glove box.

¹Always wear your safety belt and secure children in the rear seat.

Ambiente

Includes all standard features, plus:

Seating

2-way manually adjustable driver's seat
Front-passenger seat back map pocket

Interior

AM/FM stereo/single-CD player with MP3 capability and 4 speakers
Auxiliary audio input jack
Front floor mats
Ingot Silver-painted instrument panel, air vents and door trim appliqué
Manual air conditioning
Manual headlamp control
Power windows

Exterior

15" steel wheels with wheel covers and 195/65R15 low rolling resistance tires
Black door handles
Black sideview mirrors
Black upper and lower grille
Windshield wipers – Front 6-speed variable-intermittent

Safety & Security

Belt-Minder® safety belt reminder for driver
Remote Control Locking with 1 flip key and 1 plain key

Available Package

Marketing Flex Pack 12 includes front-passenger seat slide-out storage drawer, AM/FM stereo/single-CD player with MP3 capability and 4 speakers, emergency brake light, rear power windows, and 16" Style 1 alloy wheels with 205/60R16 ATR tires

Marketing Flex Pack 14 includes 16" Style 1 alloy wheels with 205/60R16 ATR tires

Available Options

1.5L Ti-VCT I-4 engine with 5-speed manual transmission

1.5L Ti-VCT I-4 engine with PowerShift 6-speed automatic transmission with SelectShift® capability

Trend

Includes select Ambiente features, plus:

Mechanical

1.5L Ti-VCT I-4 engine with PowerShift 6-speed automatic transmission with SelectShift capability

Seating

4-way manually adjustable driver's seat
Driver's seat back map pocket

Interior

AM/FM stereo/single-CD player with MP3 capability and 6 speakers
Cruise control (automatic transmission)
Ford SYNC® voice-activated in-vehicle communications and entertainment system with USB port
Leather-wrapped steering wheel
Load compartment light
Overhead console with sunglasses storage
Power windows with driver 1-shot-up/-down feature
Steering wheel with audio controls
Sterling Silver-painted instrument panel, air vents and door trim appliqué

Exterior

16" Style 1 alloy wheels with 205/60R16 ATR tires
Black roof rack
Body-color door handles
Body-color sideview mirrors
Front fog lamps
Light finish upper and lower grille

Safety & Security

Airbags¹ – 2-row side-curtain
Airbags¹ – Front-seat side
Anti-theft perimeter alarm

Available Package

Marketing Flex Pack 15 includes DALI light, and Sunset Silver-painted instrument panel, air vents, door trim and steering wheel appliqué



15" Steel with Wheel Covers
Standard on Ambiente



16" Style 1 Alloy
Standard on Trend
Available on Ambiente

Titanium

Includes select Trend features, plus:

Mechanical

1.5L Ti-VCT I-4 engine with PowerShift 6-speed automatic transmission

Seating

Driver's manual lumbar adjust

Driver's seat armrest

Interior

Auto-dimming rearview mirror

Auxiliary powerpoint in luggage compartment

Bluetooth® interface connection

Courtesy lights with 2 map lights

Electronic automatic temperature control

Fuel computer

Keyless entry and push-button start

Rear floor mats

Exterior

16" Style 3 alloy wheels with 205/60R16 ATR tires

Automatic headlamps

Chrome upper and lower grille

Front fog lamps with chrome bezel

Rear parking sensors

Silver roof rack

Titanium badge

Windshield wipers – Rain-sensing front

Safety & Security

Belt Minder® safety belt reminder for front passenger

Available Package

Marketing Flex Pack 16 includes leather-trimmed seats with perforated inserts, Dark Leather/Red interior trim, soft touch front-door armrests and vinyl rear-door armrests



16" Style 3 Alloy
Standard

Charcoal Black leather trim with perforated inserts. Marketing Flex Pack 16. Available equipment.

Push-button start, center console stowage and fuel computer.

The Bluetooth word mark is a trademark of the Bluetooth SIG, Inc.

Exteriors This helpful guide is intended for selecting an exterior color – not features, options or a trim level.

Interiors



Diamond White



Chill Metallic



Bright Yellow



Golden Bronze Metallic



Mars Red Metallic



Kinetic Metallic



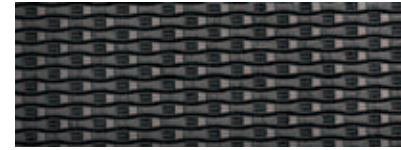
Moondust Silver Metallic



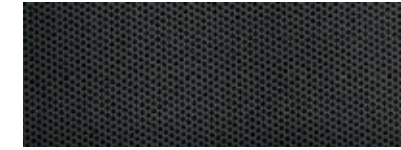
Smoke Metallic



Panther Black Metallic



1 Dark Shadow Cloth



2 Charcoal Black Cloth



3 Warm Neutral Grey Cloth



4 Charcoal Black Cloth



5 Charcoal Black Leather with Perforated Inserts

Exteriors	Interiors			
	Ambiente	Trend	Titanium	
Diamond White	1	2 3	4	5
Chill Metallic	1	2 3	4	5
Bright Yellow	1	2 3	4	5
Golden Bronze Metallic	1	2 3	4	5
Mars Red Metallic	1	2 3	4	5
Kinetic Metallic	1	2 3	4	5
Moondust Silver Metallic	1	2 3	4	5
Smoke Metallic	1	2 3	4	5
Panther Black Metallic	1	2 3	4	5

3 Optional on Trend. 4 Optional on Titanium. Colors are representative only. See your dealer for actual paint/trim options.



QUALITY, GREEN, SAFE & SMART.

الجودة، ومراعاة البيئة، والأمان، والذكاء.

me.ford.com

Ford Genuine Parts & Service. Keep your vehicle in optimum operating condition with scheduled maintenance service. Ford and Lincoln Dealership technicians know your vehicle inside and out. They are continuously trained by Ford Motor Company and the parts they use are specifically designed for your vehicle. □ Genuine Ford Accessories will be warranted for whichever provides you the greatest benefit: 24 months unlimited distance, or the remainder of your Bumper-to-Bumper 3-year/60,000-km New Vehicle Limited Warranty. Ford Licensed Accessories (FLA) are warranted by the accessory manufacturer's warranty. Ford Licensed Accessories are fully designed and developed by the accessory manufacturer and have not been designed or tested to Ford Motor Company engineering requirements. Contact your Ford Dealer for details and/or a copy of all limited warranties.

Published by Ford Motor Company

Printed in United Arab Emirates

©2014 Ford Motor Company

خدمة الصيانة وقطع الغيار الأصلية من أفورد. حافظا على حالة التشغيل المثلى لسيارتك بفضل أخدمة الصيانة المحدولة. إن أفورد وكالة أفورد وليتكون يعرفون سيارتك! عن أظهر قلب. هم يخضعون باستمرار للتدريب من قبل شركة أفورد والقطع التي يستعملونها مصممة خصيصاً لسيارتك. □ تكفل الأكسسوارات أفورد الأصلية بحسب ما يؤمن لك المنفعة الكبرى: 24 شهراً (أميال غير محدودة) أو ما تبقى من الكفالة المحدودة الخاصة بالسيارة الجديدة من التصديق إلى التصديق التي تغطي السيارة لمدة 3 سنوات / 60,000 كلم. وينشأ إلى أن الأكسسوارات المرخصة من أفورد (FLA) تغطيها كفالة الشركة المصنعة للأكسسوارات. كما أن الأكسسوارات المرخصة من أفورد مصممة ومطورة بالكامل من قبل الشركة المصنعة لها. ولم يتم تصميمها أو اختبارها تبعاً للمتطلبات الهندسية الخاصة بشركة أفورد. يرجى الاتصال بوكيل أفورد المحلي لديك للحصول على تفاصيل أو/أو نسخة عن الكفالات المحدودة.

© 2014 جميع الحقوق محفوظة لشركة أفورد موتور كومباني

تمت طباعته في الإمارات العربية المتحدة

صدرها عن الكتيب عن أفورد موتور كومباني