

URBAN-I[®]

REVOLUTION IS WELL UNDERWAY

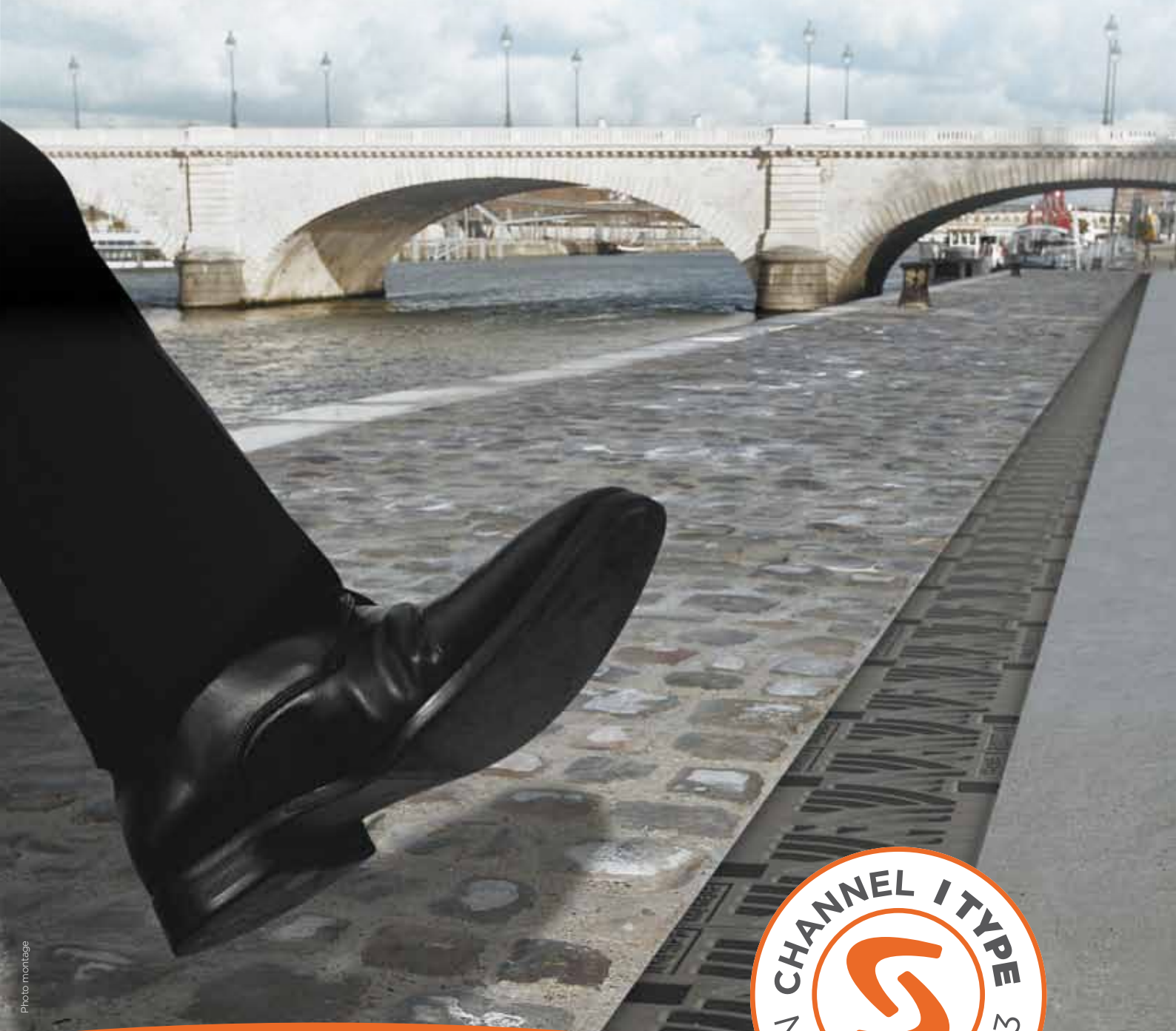


Photo montage



S **STRADAL**

A NEW CHANNEL

shakes up our urban environment

Specially developed for an easy integration into our urban landscaping, STRADAL moves ahead with **URBAN-I®** and its **innovative aesthetic qualities**.

- **A revolutionary and modern grid profile**
- **Its self-resistant «I Type» system** makes it technically unique on the market

Fashion and trendy, **URBAN-I®** will meet all the cities' technical requirements.



THE ECOLOGICAL AND SUSTAINABLE CHOICE

With its «I Type» self-resistance conception, **URBAN-I®** will naturally establish itself as the solution towards the current challenges of durability and environment protection.

- Implementation **with no additional material**
- Quick installation **to save money and time**
- **100% French** production
- Concrete and cast iron **100% recyclable**

A MULTI-FACETED CHANNEL



C 250



D 400

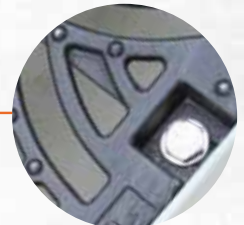


High performance
GJS 600-10 cast-iron

Aesthetic grid and profile



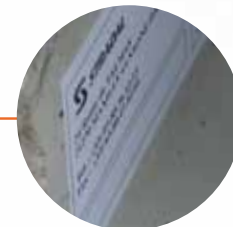
Grid's opening 18 mm
(disabled people)



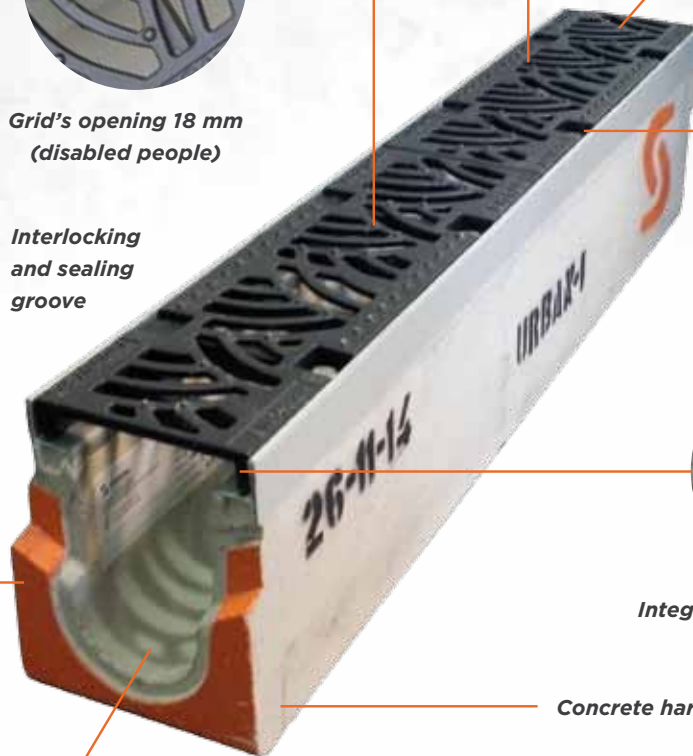
8 / ml stainless steel
fastenings



Interlocking
and sealing
groove



Integrated resistance D400



Concrete hardened in mould

Hydraulic bottom

TECHNICAL DATA SHEET

Fields of application:

Road crossings / Tramways / Pedestrian streets and quarters / Shopping centers / Resistance class Group 4 - D400

Further information about the grid:

Absorption surface sticking to Norm NF EN 124-1 / Grid fixed with 4 stainless steel screws and washers

Main specificities:

Monolithic channel with high-performance self-levelling concrete W+R (freeze and thaw, de-icing salt) / Male-female interlocking system / Length: 1 meter / Hydraulic self-cleaning profile

Option:

Anti-theft system

Handling:

By manual or mechanical kerb's pliers

Range:

5 useful widths : 100 - 150 - 200 - 300 - 400 mm
7 hydraulic sections : from 130 to 1 500 cm²
2 models with integrated slope : 200 and 300
Gullies and endplates

Reference texts:

Norm EN NF 1433
In compliance with decree N°2006-1658 dd 21/12/2006 referring to the accessibility to disabled people

THE TECHNICAL SOLUTION



Require the «I Type» certification

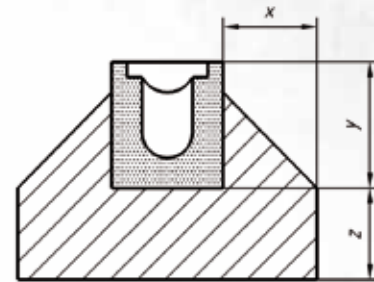
Towards classic channels (M Type) requiring a long and **demanding implementation**, choose and go for **the «ready-to-lay» sustainable solution**.

Thanks to its **self-resistance integrated system**, requiring no concrete-siding, you will benefit from:

- Saving time during installation
- A quick implementation
- A product without after-sales service



Example of «I Type»



Example of «M Type»

Choose the high performance

The high-quality conception of **URBAN-I®** matches up all your technical questions.

High resistance of the grid:

The GJS 600-100 new generation cast-iron provides **an incomparable breaking strength** (until 600 Mpa) and **exceptional elastic limit** (until 470 Mpa).

Great surface of absorption:

Thanks to the thinness of its bars, **URBAN-I®** provides **very important capacity of absorption** (up to 1 860 cm²).

Take advantage of the thinness of the bars of URBAN-I® and thus, get important surfaces of absorption.

SURFACES OF ABSORPTION CM ² /ML					
URBAN-I®	150	200	250	350	450
	480	680	940	1400	1860

THE AESTHETIC SOLUTION

Sublimate your projects

A **definitely modern profile of the grid**, aimed at being integrated in all urbanism projects, even the most ambitious!

- An **elegant** grid's design
- The **guarantee of alignment** of the visible edges
- A **discrete profile** for an embellished visual perspective



Customize with no limit!

The grid of **URBAN-I®** adapts to all your desires. Give complete free rein to your imagination and transform the channel into a **genuine street furniture**.

Now choose:

- Your **grid pattern** in cast iron, galvanized steel, corten steel...
- Your **grid colour** (RAL): a high-performance paint, resisting to corrosion and bad weather

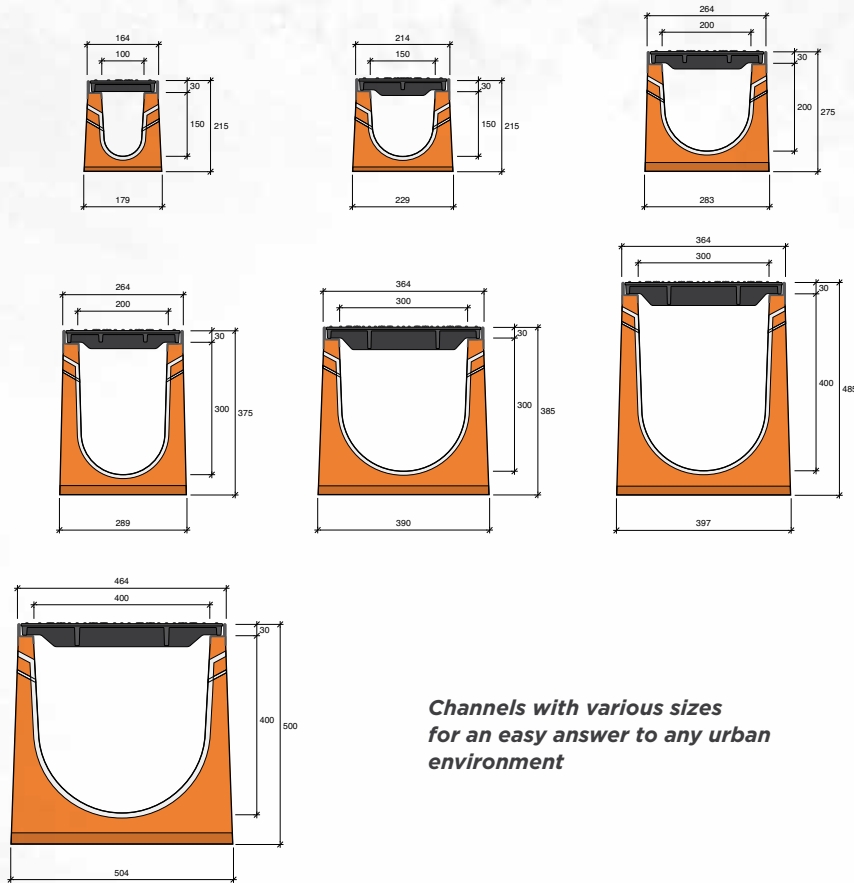


Corten steel grid - Michel Colucci 1944 - 1986 French actor - Founder of «Les Restos du Cœur»

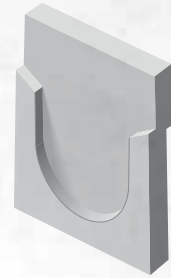
STRADAL

meets all your needs

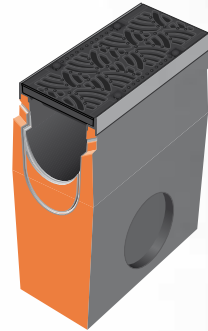
A FULL RANGE OF SOLUTIONS



*Channels with various sizes
for an easy answer to any urban
environment*



Mixed endplate



Gully - Length : 0.50 ml

Your contact for Export Dept

STRADAL

FR 21270 Maxilly-sur-Saône

Phone : +33 380 36 83 22
or +33 685 82 48 32

Email : hubert.degasquet@stradal.fr
or christine.worms@stradal.fr