

The Havergal

Torch

FALL 2012



Supporting
Student
Success

ALSO IN THIS ISSUE:

Havergal College and The Havergal College Foundation
Annual Report 2011-2012



Havergal
COLLEGE

Table of Contents

- 2** Havergal Snapshots
- 4** Havergal's Chair of the Board of Governors
- 5** Grace Woroch, School Captain 2012-2013
- 6** Understanding the Whole Girl
- 7** HC Summer Institutes for Teaching and Learning
- 8** Havergal Student Awards 2011-2012
- 11** The Green in Green & Gold
- 12** Institute at Havergal
- 15** Learning Through a Guided Inquiry Framework
- 16** Feature Story: Supporting Student Success
- 20** The Changing Needs of our Infrastructure
- 22** Community News
- 23** Old Girls News
- 27** Havergal College and The Havergal College Foundation Annual Report 2011-2012
- 52** 2012 Survey Results



ON THE COVER. Left to right: Samantha Blackstein (Grade 3), Ellen Ferris (Grade 12) and Anna Hardie (Grade 8)

EXECUTIVE DIRECTOR OF
ADVANCEMENT & COMMUNITY
RELATIONS

Louise Yearwood

DIRECTOR, COMMUNICATIONS

Young Um

COMMUNICATIONS ASSOCIATE

Susan Pink

CONTRIBUTING WRITERS

Susan Pink

Young Um

Louise Yearwood

and others as credited

CONTRIBUTORS

Helena Follows

Christine Lawson

Heather McLean

Ann Peel

DESIGN

Cathy Little

CONTRIBUTING PHOTOGRAPHY

Susan Pink

Jackie Suongas

Caley Taylor 1996

Carol Tsang

SPECIAL THANKS to all members of the Havergal community who participated in interviews, submitted articles, contributed photographs and reviewed articles.

SUSTAINABILITY AND THE TORCH

The Torch is printed on Forest Stewardship Council (FSC)-approved paper and mailed in a 100% biodegradable bag that is also recyclable. Please help reduce landfill waste by disposing of it in your recycling box.

PRIVACY OF INFORMATION

Havergal College is committed to protecting the privacy of your personal information. Havergal's Privacy statement is available at www.havergal.on.ca.

Canada Post Publication Number
48951322



Havergal
COLLEGE

1451 Avenue Road
Toronto, Ontario, Canada M5N 2H9
Telephone: 416.483.3519
Fax: 416.483.6796

www.havergal.on.ca



A Continuum of Excellence

..... By Dr. Susan R. Groesbeck

The 2012-2013 school year is off to a rousing start. Already we have enjoyed a wonderful Grade 12 Mother-Daughter Luncheon; Celebration Saturday, in support of our community partnerships; and Reunion Weekend, with more than 300 Old Girls returning to Havergal to rekindle old friendships and re-live old memories. And all this in just the first two months! Other Havergal signature events—including Carol Service, Founders' Day and Graduation—will be joined by a major fundraising Gala on May 4, 2013, at the historic Carlu in downtown Toronto. If you have not been to this fabulously renovated event space—formerly known as Eaton's Seventh Floor—you are in for a treat. The net proceeds from this special evening will support a number of key school initiatives in both the Upper and Junior Schools. It will be a night you won't want to miss, and I hope to see many of our readers there!

There are several other major projects underway this year, including an accreditation process in which Havergal will participate in the spring of 2013, run by the Canadian Accredited Independent Schools (CAIS). The process is conducted by a group of senior administrators and educators from other CAIS member schools from across Canada. The CAIS team will engage in an extensive review of all our operations; we will learn from the best practices of other schools as well as share with them what Havergal does best. The results of this accreditation process, added to the results of the strategic surveys the school conducted in March 2012, will provide an enormous amount of data upon which to draw as we begin discussions for Havergal's next strategic plan 2014-2019.

This fall issue of *The Torch* includes a feature article on how we support students to reach their full potential. It also includes our Annual Report (see page 27); I want to take this opportunity to thank our community for their generous and unwavering support for Havergal's culture of philanthropy. As the school contemplates its future plans and the need for enhanced teaching and learning spaces, our community's ability to support these aspirations will be critical to its success. It is an exciting time in Havergal's distinguished history and, indeed, in the history of education.



As you know, I will be “graduating” at the end of this year, and so the Class of 2013 has a special place in my heart. My last year will be a poignant one, and I can assure you that I will be savouring every last minute of rich conversation and special moments with our wonderful students, faculty, staff, Old Girls and parents.

Havergal College is an extraordinary institution—a proud continuum of community members both near and far. Like a family heirloom, it is both our pleasure to enjoy it and our corporate responsibility to preserve it for the next generation. ■



Havergal's Gala Event May 4, 2013

Please mark Saturday, May 4, 2013, in your calendars for the Havergal Gala, being held at the spectacular Carlu in downtown Toronto. With the assistance of events professional Jennifer Bassett (Class of 1993), our committee of talented and dedicated Havergal volunteers, led by co-chairs Loree Meneguzzi and Laurie Ogilvie Melbourne (Class of 1990), are planning a night you won't soon forget! Delectable food by Master Chef Mark McEwan, outstanding musical entertainment by Sean Jones and a red-hot live auction (including a tuition raffle!) round out this fantastic evening.

Net proceeds will support the Outdoor Naturalized Learning Space in the Junior School and the Aquatic Centre, Science Labs and Teaching Specialist Office in the Upper School.

Tickets are available for purchase through Bassett Events at 416-616-4660: a single ticket is \$500; a table of 10 is \$5,000. For sponsorship information, please contact Jennifer Bassett directly at jbassett@bassettevents.ca.



1. Students on the Global Experience Program excursion to South Africa in August.
2. This summer's Headstart French class on their way to the outdoor classroom.
3. Welcoming Junior School students back to school on September 4.
4. Middle School students on the first day of school.
5. Boarder Welcome Reception with Residence Head, Meghan McGregor (left).
6. Parent volunteers at the new Mini G&G Shop at the Junior School.
7. A Junior School student explores the Wonder Wall, created by STEM teacher Darryl Reiter.
8. House Captains host House Lunch in early September.
9. Daughters and mothers have fun at the Middle School Mother Daughter Games.



- 10. Havergal's U-20 Soccer Team plays BSS on September 24.
- 11. Grade 11 students embark on the Outdoor Education Trip to Algonquin Park.
- 12. Grads enjoy time with their moms at the annual Mother Daughter Luncheon.
- 13. Middle School students and the Havergator karaoke at Celebration Saturday.
- 14. Prefects perform the new school cheer at Celebration Saturday.
- 15. Grade 4 students sing Festival Alleluia at the annual Harvest Festival.
- 16. Principal Sue Groesbeck at the Old Girls Reunion Cocktail Party on September 29.
- 17. Upper School students support Pakistani schoolgirl activist Malala Yousafzai.



13



12



14

Snapshots of Life at Havergal



15



16



17

Havergal's Chair of the Board of Governors

By Young Um

For Ann Kerwin, Havergal College will always be *her* school. “Havergal gave me the opportunity and the environment in which to grow as a teacher. I’m grateful for having had the chance to work with the most outstanding educators and to learn from and mentor incredible students,” says Mrs. Kerwin, who was a Social Sciences teacher at Havergal from 1971 to 1981. “The school environment encouraged me to take risks, to be creative and to welcome challenges and opportunities with enthusiasm.”

An experienced leader in the not-for-profit sector in Canada and England, Mrs. Kerwin has always been involved in making a difference in her community. More recently in Toronto, she has served as Chair of the Women’s College Hospital Foundation Board, Vice Chair of the Board of Bridgepoint Health Foundation and Director of the Badminton and Racquet Club.

For Mrs. Kerwin, giving back is actually getting back. “Philanthropy is all about making real connections with people and sharing your vision and commitment,” says Mrs. Kerwin, who is married to Edward, mother to two daughters and grandmother of three. “Philanthropy is like a dream catcher. It enables us to pursue our dreams and our passions.”

Throughout her professional career as a faculty member and administrator at Havergal and at the Bishop Strachan School, Mrs. Kerwin has remained a passionate advocate of challenging and rewarding education for young women both within the school environment and the community. She retired eight years ago from a career that she absolutely loved. “I learned more from my students than what I imparted to them. Many of my former students are my friends to this day,” she fondly recalls.

“It’s valuable to everyone that we’re preparing young women for the future. At Havergal, we provide a superior education for young women in this country, if not internationally,” she says. “Through the Institute at Havergal, we are taking students beyond the school and enabling them to be global decision makers and leaders.”



Mrs. Kerwin reconnected with the Havergal community in 2009. She embraced a leadership role as a new member of Havergal’s Board of Governors following a conversation with then incoming Chair of the Board of Governors, Eden Oliver 1978, whom Mrs. Kerwin taught as a student.

Ms. Oliver recalls how her former teacher helped her to discover her love of political science. “She challenged me to be better at whatever I was doing. She gave me the sense that she believed in me,” she says. “She challenges us to do our best work and supports us in meeting the challenge.”

Since then, Mrs. Kerwin has served as Havergal’s Vice Chair of the Board and Co-Chair of the Leadership Council. As the school’s recently appointed Chair of the Board of Governors, she will lead school governance at Havergal for the next two years. “I feel really fortunate to be back in the education sector and at Havergal, but this time, from a different perspective,” she adds.

“As a Board, we will work with all our school constituencies to build on the remarkable platform that Dr. Groesbeck has developed. Her instincts for educational excellence and her ability to lead the charge are exemplary, serving Havergal well,” she says. “Dr. Groesbeck and the principals before her have each

been agents of change who have made wonderful contributions that have benefited the whole school community.”

The Board of Governors is charged with a huge responsibility that goes beyond school policies. “We’ll be hiring the school’s next principal, working on the new five-year strategic plan, preparing a plan to develop our facilities in order to provide the best educational environment for learning, and planning to ensure we continue to attract outstanding faculty and staff,” she says, acknowledging that her new role will be both challenging and rewarding. “I am very fortunate to have highly experienced and talented Board members on the Havergal team—the winning team.”

The entire Havergal community is fortunate to have Mrs. Kerwin take on this leadership role, guiding the Board and helping to shape Havergal’s future. ■

Grace Woroch

School Captain 2012-2013

By Susan Pink

When not in class, School Captain Grace Woroch trades in her knee socks, kilt and blazer for her cleats, shin guards and jersey. A soccer player since the age of five, Grace likes being a part of a team. “Playing soccer gives me a nice break from academics and helps me to focus on my studies,” she says of her passion for the sport.

For Grace, playing soccer has been a constant in her life. By the age of 11, she had lived in three different countries. Born in Seattle, her family moved to Singapore when she was five and then to Toronto when she was 11. In each place, she found comfort and familiarity on the soccer field.

A player on Havergal’s soccer teams from Grades 7 to 11, Grace is taking a break from Havergal athletics this year to play centre mid-field on the Ajax Football Club, which is a part of the competitive Ontario Youth Soccer League. Her goal after graduation is to play collegiate soccer in the United States, where she plans on studying math and science.

“Sport is a big part of my life,” Grace says. “One of the reasons I chose to come to Havergal College was because of its athletic programs and beautiful playing fields.” A favourite place on campus for Grace is the Labatt North Quad, in the heart of the Upper School. “In the spring, we have Footloose Fridays at lunch. We sing, perform and hang out in the Quad. It gives us a chance to enjoy our friends and it reminds us that summer is coming.”

This year, Grace and the Prefects want to help students to learn how to slow down and enjoy life. The motto for the year is “One-Two, One-Three, Dare to Be!” and it challenges students to live in the moment. “Everyone tells us to think about how our decisions will impact us down the road, but we want to remind students to put on the brakes and enjoy each day—here and now,” Grace says.

As a testament to the school’s motto, Grace is going to spend her year as School Captain enjoying quality time with her friends, playing soccer, participating in co-curricular opportunities and singing with the Chamber and Senior Choirs. Each year, she looks forward to Carol Service, her favourite event at the school.

“The idea of representing Havergal as School Captain is an honour,” Grace says. “I hope the Prefects and I can show the world how great Havergal and its students are.” ■

Understanding the Whole Girl?

By Sarah Bruce



Sarah Bruce,
Head of Upper School

Optimistically embraced the school's Strategic Plan, "A Culture of Capability 2009-2014," and, in particular, the Whole Girl strategy. To me, the recognition of the Whole Girl means that as a school we purposefully monitor the progress and well-being of each girl's body, mind and spirit. To fulfill this, we place a strong emphasis on providing a wide variety of opportunities for each girl to explore and discover what it is that brings her personal fulfillment. As well, we provide many opportunities for each girl to reach her full potential in her chosen pursuit. My perception of the term well-rounded also means that we help each student to balance the importance of all components of her well-being without sacrificing one of the other areas. In other words, the term Whole Girl entails helping each girl to feel whole.

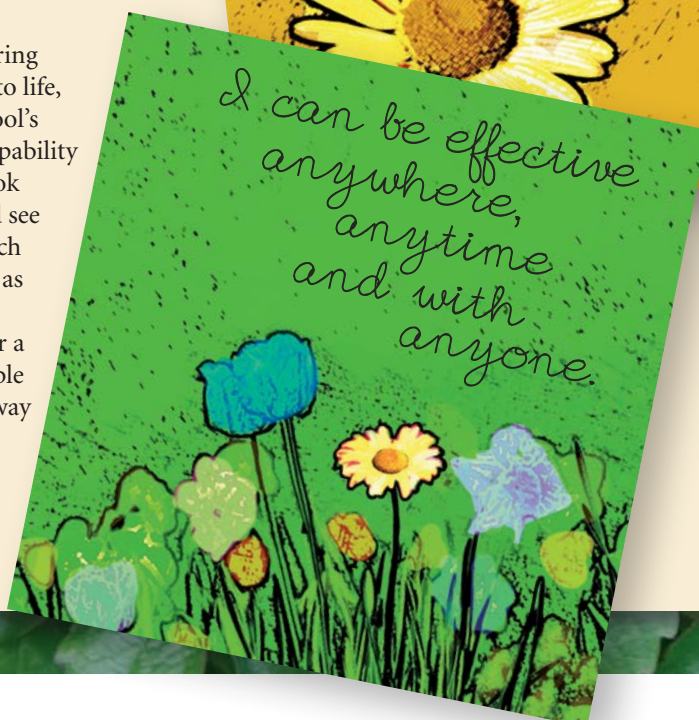
As the Strategic Plan came to life, I learned that this understanding of Whole Girl is not shared by all of members of our community. Some students interpret Whole Girl to mean that they must be good at everything. We learned from other girls that the Whole Girl strategy placed additional pressure on them to be perfect; to reach one's potential and be well-rounded implied for them that they had to be the best at everything.

With this in mind, this academic year we will be exploring with our students what Whole Girl and well-rounded means to them and what makes them feel whole.

To help bring our mission of "preparing young women to make a difference" to life, the Strategic Plan articulates the school's desire to develop each girl's global capability and self-efficacy. These terms also took some exploring before the girls could see what matters—that it is their approach to life that is most important, as well as their belief in their own abilities and capabilities—and that there is neither a checklist for becoming globally capable and self-efficacious nor is there one way of doing something.

As these terms were not clearly understood by students, the Academic Leadership Team produced two new posters, which can be found around the school, that summarize global capability as "I can be effective anywhere, anytime and with anyone" and self-efficacy as "I believe I can engage, accomplish, contribute."

As we near the end of our current Strategic Plan, we continue to reflect upon our work, to evolve our learning and to celebrate our achievements. I hope parents will share in their daughters' journey as they build their sense and understanding of wholeness, self-efficacy and global capability. ■



Havergal College Summer Institutes for Teaching and Learning

.....By Seonaid Davis.....



Seonaid Davis,
Director of
Curriculum & Faculty
Development

Havergal's Summer Institutes for Teaching and Learning have a long history of offering rich and diverse learning experiences to educators from around the world. In the summer of 2012, Havergal hosted seven seminars. Each seminar focused on a different aspect of the question "what is the story of learning in this place?" and explored a different aspect of current educational theory or practice. The Institutes, open to all educators, are intended to support our own curriculum initiatives and to meet the professional development needs of our teachers.

In the *Cultures of Thinking* seminar, Mark Church, who is associated with Harvard's Project Zero initiative, "Making Thinking Visible," explored what it means to be focused on developing a culture of thinking in a school. Mark asked participants to consider what kinds of thinking students use when learning for understanding and what opportunities there are for students to develop and explain their ideas to each other.

Valérie Lanctôt-Bédard and Jean-Phillipe Bouchard, experienced communication trainers, led the *Authentic Dialogue: Developing Authenticity and Respect* seminar. These presenters helped participants to understand their own communication patterns and to learn how to communicate in ways that create a successful learning and working environment.

In the seminar *Implementing Growing Success: Assessment in Ontario*, Damian Cooper, a writer and consultant in the field of assessment practice, focused on the big ideas in assessment theory and practice and provided specific strategies to help teachers

understand how to use assessment for, of and as learning to improve student success.

Peter Cobb, an experienced educator interested in the moral and ethical development of children, looked at how education is changing in the 21st century and why we need to change along with it. He helped educators consider how to change the story of learning to be one of co-learning and collaboration.

Ralph Sneed, from Philips Exeter Academy, along with David Sumner, Laura McRae, Paul McCulloch and Ruthanne Wrobel from Havergal co-hosted the *Learning Through Dialogue* seminar. Participants went back to school and experienced different models of learning including the Harkness method, the Socratic seminar and the tutorial.

Jay McTighe, an educational consultant and author, and I led educators through a four-day workshop exploring the question: "What is important to understand and how do we teach for understanding?" Educators left the seminar with a well-designed curriculum unit, which focused on what was most important for students to know, do and understand.

Havergal teachers Britney Coleman, Laura Logaridis, Leslie Siegrist and Katie Tranter led a large group of educators through a two-day seminar focused on examining the best practices in the early years. They highlighted the inquiry-based learning model being successfully implemented in our kindergarten classes.

We are already planning for next year's Summer Institutes. More details will be available in the spring of 2013 at www.havergal.on.ca/PD. ■



Havergal Student Awards

2011-2012

The Havergal community congratulates the following students for their achievements and accomplishments for the 2011-2012 school year. Special awards ceremonies were held on June 11, 2012, for the Junior School and October 11, 2012, for the Upper School to honour and acknowledge the many award recipients.

JUNIOR SCHOOL GRADE 6 PRIZES AND AWARDS

- The Lady Hulbert Holmes Award: Alexandra Rozenberg
- The Ismay McCarrick Award: Anna Wellner
- The Mohan Award: Natalie Marrone
- The Laurene Watson Award: Isabella Meneguzzi
- The Levy, Revel, Wilkinson Award: Danya Assaf and Abigail Tien

PRIZE FOR HIGHEST GENERAL PROFICIENCY

- Grade 7: Elizabeth Farkouh
- Grade 8: Sarah Alexis Gritis
- Grade 9 (Class of 1937 MacDonald Memorial Prize): Caroline Marshall
- Grade 10 (Class of 1937 MacDonald Memorial Prize): Bryn Ferguson
- Grade 11 (The Luella Gertrude Lovering Memorial Prize): Emma Bogler, Miranda Taylor

UPPER SCHOOL ACADEMIC AWARDS

- The Ancerl Prize for Music: Carling Pang
- The O'Rorke Middle School Music Award - Band: Samantha Clarizio
- The O'Rorke Middle School Music Award - Strings: Emily Anderson
- The O'Rorke Middle School Music Award - Vocal: Victoria Tam
- Dorothy Bevan Prize for Junior Mathematics in Grade 10: Ashley Koo
- Dorothy O'Dell Memorial Prize for Mathematics in Grade 11: Jill Harrop, Anita Xu
- Class of 1937 Proficiency Prize in Science: Mikaela Preston
- Dorothy Symons Scholarship in Canadian Studies: Bryn Ferguson
- The Louise Cholette-Rees Award: Emma Schafler
- Elaine McGillivray Prize for French in Grade 10: Samantha Cardinale (FSF2D), Maggie Lan (FSF2D), Caroline Marshall (FSF2D1)
- Constance Pudan Prize for French in Grade 11: Jamie Wood (FSF3U), Bryn Ferguson (FSF3U1)
- The Marcelle De Freitas Prize for Modern Languages: Jamie Albaum, Alice Jeon
- The Yale Book Prize: Victoria Chan

SENIOR YEAR ACADEMIC PRIZES

- The Arts - Band: Alice Jeon, Victoria Walter
- Languages - French: Emma Bogler, Natasha Michaeloff
- Languages - Latin: Sonia Kim
- Languages - Mandarin: Melanie Ho
- Languages - Spanish: Emma Bogler, Natasha Michaeloff

- Mathematics - AP Calculus & Vectors: Sarah Leong
- Mathematics - AP Statistics: Jennifer Chen
- Social Sciences - Economics: Emma Bogler
- Social Sciences - Education Toward A Changing World: Ami Takagi, Sara Willoughby
- Technology Education - Computer & Information Science: Sydney Lau

UPPER SCHOOL SCHOLARSHIPS

- The Wendy J. Thompson Scholarship - Grade 7: Audrey Green, Gillian Smith
- The Wendy J. Thompson Scholarship - Grade 9: Jennifer Chan, Cecilia Li, Julia Mastroianni, Skye Preston, Elizabeth Tam, Mengxuan Zhang
- The Frances Ridley Havergal House Entrance Scholarship: Taylor Bowes
- The Robin Urquhart Beddis & Jean Macpherson Urquhart Scholarship: Alice Jeon

UPPER SCHOOL SPECIAL AWARDS

- The Boarder Cup: Joy Chen
- Havergal Community Committee Prizes - Grade 7: Stephanie Higgs, Evelyn Tokatlidis
- Havergal Community Committee Prizes - Grade 8: Aleza Waheed
- Havergal Community Committee Prizes - Grade 9: Karishma Singh
- Havergal Community Committee Prizes - Grade 10: Meghan Meneguzzi
- Havergal Community Committee Prizes - Grade 11: Ariel Shetzen
- Old Girls Prizes - Grade 9: Tessa Buchan
- Old Girls Prizes - Grade 10: Nicolette Carnella
- Old Girls Prizes - Grade 11: Jamie Albaum
- The Institute at Havergal's Student Innovation Award: Jennifer Chen, Julia Hou, Lucy Luo, Cynthia Zhou
- The Class of 1956 Mary Dennys Award: Victoria Walter
- The Havergal Award for Exceptional Academic Standing: Emma Bogler, Miranda Taylor



Upper School Honour Roll and Award of Distinction

In Grades 7 and 8, students who earn a weighted average of 80% and above are placed on the Honour Roll. Students who earn a weighted average of 90% and above are given an Award of Distinction. To achieve a position on the Honour Roll in Grades 9 to 12, students must attain several grades in the 80s: Grades 9 and 10 – six subjects out of eight in the 80s; Grade 11 – five subjects out of seven or eight in the 80s. To attain an Award of Distinction, a student must have the same number of grades as above in the 90s.

(H = Honour Roll; D = Award of Distinction)



AGNES HANSEN HOUSE

Jamie Albaum – D
 Claire Barclay – D
 Jessica Barford – H
 India Bruhn – H
 Emma Buckles – H
 Emily Chin – D
 Katherine Chin – H
 Sarah Chin – D
 Clare Coburn – H
 Alyssa Dais – H
 Bryn Ferguson – D
 Skye Gibson – H
 Bronte Harvey-McKean – H
 Bronwyn Hersen – D
 Rebecca Hoffer – D
 Megan Hoffer – H
 Jessie Isberg – H
 Hansa Jain – H
 Caroline Jyu – D
 Nika Khajehdehi – H
 Na Kyung (Michelle) Kwon – H
 Shannon Lacombe – D
 Sierra Lane – H
 Erica Laver – H
 Danielle Laver – H
 Meaghan Lee – H
 Jocelyn Lee – D
 Gladys Leung – H
 Tiffany Lew – H
 Hilary Lloyd – D
 Jacqueline Lu – D
 Margo Macdonald – H
 Phoebe MacDougall – H
 Madeleine MacDougall – H
 Catherine Manuel – D
 Julia Mateus – H
 Brittany Morrison – D
 Nadia Munk – D
 Jessica Munk – D
 Shaelyn Newmarch – H
 Nina Ngo – D
 Laura Osborne – D
 Kathleen Pittini – H
 Ashley Romundt – H
 Amanda Rondinone – H
 Sophie Seidelin – D
 Ariel Shetzen – H
 Genevieve Simone – H
 Jacqueline Simone – H
 Miranda Taylor – D
 Lauren Thomas – H
 Evelyn Tokatlidis – H
 Caitlin Wong – H
 Grace Woroch – D
 Rachel Xian – D
 Anita Xu – D
 Shalley Xu – D
 Goa Zhu – H

CATHERINE STEELE HOUSE

Yasmin Alameddine – D
 Madelaine Battista – H

Victoria Bilbily – D
 Davis Blakely – H
 Madison Bluestein – H
 Alexa Breininger – D
 Tessa Buchan – D
 Rose Chaykin – H
 Jessica Chen – H
 Stephanie Cheung – D
 Melanie Cheung – D
 Sonja Chu – H
 Emily Kate Cummings – H
 Alexandra Cunningham – H
 Elizabeth Farkouh – D
 Leyla Godfrey – H
 Priscilla Goh – H
 Sarah Alexis Gritis – D
 Jaimie Kidson – D
 Si Yeun (Kelly) Kim – D
 Dana Lamb – H
 Margaret Lan – D
 Madeleine Lao – D
 Tesa Laslavic – H
 Tiffany Yee-Ho Leung – D
 Madeline Lisis – D
 Erin Macdonald – H
 Katherine Matthews – D
 Erin McQueenie – H
 Mikaela Meijer – H
 Danielle Meschino – D
 Michaela Milgrom – D
 Avalon Morell – D
 Urvashi Naraine – D
 Edmee Nataprawira – D
 Ivey Norton – H
 Jane Park – D
 Alexis Perlman – H
 Alexandra Prosterman – D
 Gillian Reive – H
 Karen Rhamey – D
 Claire Rhamey – H
 Danielle Robertson – H
 Emma Seger – H
 Anna Shinn – D
 Heather Sigurdson – H
 Taylor Simon – D
 Sierra Singh – D
 Rozana Taghi-Ganji – D
 Ami Takagi – H
 Victoria Tam – D
 Alyx Vinieris-Giancola – H
 Emily Wheeler – D
 Jennifer Yeung – H
 Hanna Yoon – D
 Sarah Zhao – H
 Rachel Zigelstein – D

ELLEN KNOX HOUSE

Claire Abbott – D
 Sara Abhari – D
 Morgan Alford – H
 Lauren Azzopardi – D
 Katherine Barron – D
 Elizabeth Beattie – D
 Laura Boyd – D
 Caroline Boyd – H

Jennifer Chen – D
 Courtney Cheng – D
 Chelsea Cheng – D
 Hailey Chin – D
 Christine Choi – D
 Yunji Choi – H
 Lauren Chun – H
 Sally Chung – H
 Sarah Crull – H
 Olivia Dembroski – H
 Emily Kate Edwards – H
 Alexandra Ensor – H
 Marguerite Fisher – D
 Stefi Fountas – H
 Miriam Gladstone – D
 Alexandra Harrison – D
 Madalyn Hay Kellar – D
 Sarah Hui – D
 McKinley Inglis – H
 Madison Kennedy – H
 Diane Kim – D
 Daria Kosheverova – D
 Alexandra Lee – D
 Jihyun Lee – D
 Sarah Leong – D
 Carly Levin – H
 Siena Lindsay – D
 Susan Liu – D
 Wai Ting (Clarissa) Luk – D
 Dana Lyons – H
 Emma Macintosh – D
 Victoria Mastroianni – H
 Eileen Nash – H
 Tory O'Driscoll – D
 Taylor O'Driscoll – D
 Isabelle Ortner – H
 Ayse Ozsan – D
 Mila Popovic – D
 Taylor Poulton – D
 Mikaela Preston – D
 Katrina Schumacher – H
 Breeann Simpson – D
 Carly Simpson – H
 Megan Simpson – H
 Rebecca Smith – H
 Elizabeth Sterling – D
 Olivia Stinson – D
 Meaghan Sweeney – H
 Eryn Tong – D
 Emily Uba – D
 Katharine Wells – D
 Sydney Wells – H
 Sidney Wilson – D
 Rickie Xian – D
 Emma Young – H
 Katherine Zechner – H

EDITH NAINBY HOUSE

Zainab Abdulhusein – H
 Sara Albrecht – D
 Emily Anderson – D
 Nellianne Bateman – D
 Sierra Bokor – D
 Victoria Chan – D
 Lydia Cheng – H

Jacqueline-Ann Chesney – H
 Lindsay Cunningham – H
 Carolyn Day – H
 Alexandra Dent – D
 Kaitlin Derbyshire – D
 Natasha Dhingra – D
 Calla Elia – H
 Lauren Ellis – H
 Laura Foran – H
 Kaitlyn Francis – D
 Jessica Francis – D
 Bay Gerlings – H
 Sara Gilchrist – D
 Kate Gilchrist – D
 Jillian Gooding – H
 Alison Hacker – D
 Erin Hacker – H
 Madeleine Harlow – D
 Erica Harper – D
 Hailey Harrison – H
 Jessica Ip – H
 Talia Jacob – D
 Nicole Jauernig – D
 Samantha Johnston – D
 Charlotte Johnston – H
 Alexandra Katsiris – H
 Sara Kernerman – H
 Kylie Kim – H
 Ji Hyun (Jenny) Kim – D
 Sydney Kirkland – H
 Nga (Lina) Ko – D
 Sara Lakhani – D
 Michelle Lam – D
 Alysha Law – D
 Sarah Lawson-Schalles – H
 Hye-Won Lee – H
 Lucy Luo – D
 Belinda MacBain – H
 Paige Machat – H
 Vanessa Machat – H
 Hayley Machat – H
 Julia Malowany – D
 Pamela Mathers – H
 Jenna McMillan – H
 Sheridan Miller – H
 Angelina Pan – D
 Florence Pang – D
 Carly Reid – H
 Melika Shafiee – H
 Julia Stock – D
 Jennifer Walker – D
 Katherine Walker – H
 Sara Willoughby – D
 Zihui (Annie) Yang – H
 Rachel Zaltz – H

FRANCES RIDLEY HAVERGAL HOUSE

Sabrina Apitz-Grossman – D
 Camille Archer – H
 Madeleine Archer – H
 Samantha Bennett – D
 Sarah Burgess – D

Samantha Cardinale – D
 Lauren Cardinale – H
 Charlotte Caswell – H
 Myra Corona – H
 Stephanie Currie – D
 Elizabeth Currie – D
 Julia Duder – D
 Sara Fuller – H
 Rachel Gotlieb – H
 Holly Guo – D
 Gladys Hui – H
 Cyra Humber – H
 Alexandra Hunter – D
 Taylor Ivey – H
 Hodan Jibril – D
 Alexis Kasli – H
 Sun Young (Sally) Kim – D
 Yulhee Kim – D
 Samantha King – D
 Daniela Krcmar – D
 Ekaterina Krylova – H
 Margaret Leon – D
 Nicole Leung – D
 Diana Li – H
 Hannah Lomax – D
 Sarah MacDonald – H
 Katherine MacDonald – H
 Ellen Mandala – H
 Roslyn McCall – H
 Stephanie McCall – D
 Mira Mukherjee – D
 Kamila Mukherjee – H
 Taylor Murrell – D
 Camille Mutukistna – H
 Brontë Mutukistna – H
 Sydney Page – H
 Skylar Page – H
 Jasmine Patel – H
 Jillian Quinn – H
 Rebecca Quinn – H
 Nicole Rago – H
 Elise Reiter – H
 Helen Schweitzer – H
 Hannah Sennik – D
 Shannon Smith – D
 Judith Stephenson – D
 Charlotte Sugden – D
 Rachelle Tam – D
 Alicia Thoms – H
 Vanessa Townsend – D
 Emma Turner – H
 Emma Webb – D
 Hannah Wilson – D
 Maya Wilson – H
 Madeleine Wood – H
 Samantha Yip – D

KATE LEONARD HOUSE

Sage Beatson – H
 Andrea Camhi – D
 Rebeca Camhi – D
 Alison Chang – D
 Michelle Chen – D
 Vienna Cimetta – D
 Cara Cishecki – H

STUDENT AWARDS



Kiana Collins – H
 Danielle Colussi – D
 Laura Dalgleish – H
 Adele Donnini – H
 Isabel Donnini – H
 Katharine Dotsikas – D
 Emily Dotsikas – D
 Samarra D'Souza – H
 Meaghan Elder – D
 Francesca Elia – H
 Fiona Fan – D
 Madelaine Gibson – H
 Lia Gibson – H
 Amelia Glancy – H
 Samantha Gold – D
 Alison Goldsmith – D
 Katherine Greer – H
 Miriam Halpern – H
 Jill Harrop – D
 Danielle Harrs – D
 Angela Hou – H
 Ashley Koo – D
 Katie Lear – D
 Tiffany Leung – H
 Martha MacDonald – D
 Taylor Maguire – H
 Samantha Mayer – D
 Bryn McCutcheon – D
 Clare Morneau – D
 Ronit Nestel Aizenman – H
 Lena Nguyen – D
 Eri Nishimura – D
 Sunho Park – D
 Soho Park – H
 Ellen Poile – H
 Sydney Pottow – H
 Anna Qin – H
 Victoria Robertson – D
 Sarah Sharp – D
 Dayna Smockum – D
 Blaire Smockum – D
 Helen Song – D
 Madeleine Stein – H
 Gillian Strahlendorf – H
 Rachel Strauss – H
 Lauren Symons – H
 Clare Teng – D
 Lauren Tighe – H
 Taylor Veres – D
 Aleza Waheed – H
 Shirley Wang – H
 Emma White – H
 Lisa Wight – D
 Erika Wilcox – H
 Emma Grace Wilson – D
 Lianne Xiao – H
 Marissa Young – D
 Rachel Young – H
 Lei (Michelle) Zhao – H

MARY DENNYS HOUSE

Jenifer Adamou – H
 Rebecca Baccus – D
 Shanique Bailey – H
 Bridget Bengyel – D
 Nicolette Carnella – D
 Florence Chan – D
 Joy Chen – H
 Alexandra Clarizio – D
 Samantha Clarizio – H
 Nicole Clarizio – H
 Madison Crema – H
 Madeleine Duboc – D
 Taylor Ellis – H
 Olivia Evans – H
 Patricia Fernandez – H
 Olivia Fitzpatrick – H
 Madeline Foerster – D
 Sarah Freeman – D
 Cailleigh Fritz – H
 Jamie Lee Fritz – D
 Stephanie Fung – H
 Simran Ghoman – D
 Natalie Gillard – H
 Flora Hay – D
 So Hee (Sonia) Kim – D
 Tiffany Kwok – H
 Sarah Laing – D
 Hannah Laird – H
 Katherine Lampard – H
 Caroline Lampard – H
 Michaila Landon-Brace – H
 Jane Li – H
 Chantel Lui – D
 Adriane Lui – D
 Joyce Ma – H
 Althea Mahesan – H
 Zoë McDonald – D
 Clare McGovern – D
 Jordan McGowan – H
 Natasha Michaeloff – D
 Lindsay Newman – D
 Ferris Nowlan – D
 Brooke Pardy – H
 Emma Samarze – H
 Laura Samarze – D
 Lauren Sanders – D
 Emily Saric – H
 Maya Silman – D
 Elizabeth Tennyson – D
 Cameron Ting – H
 Rachael Tontodonati – H
 Tianna Tso – D
 Samantha Tso – D
 Elena Vorvis – H
 Xu (Mimi) Wang – H
 Caroline Watt – D
 Emma Wilson – H
 Kendra Wong – D
 Taylor Wong – D
 Erin Wong – D
 Chi Yan (Octavia) Wong – H
 Margaret Yu – D

MARCELLE DE FREITAS HOUSE

Ailsa Agnew – H
 Justine Bochenek – D
 Olivia Bochenek – H
 Lauren Bregman – H
 Ji Won Chun – D
 Dallas Cochran – H
 Katherine Douglas – H
 Hilary Ewen – H
 Madeleine Gnam – H
 Georgia Gopinath – D
 Alexandra Haber – D
 Anastasia Harmantas – D
 Filomene Harmantas – D
 Molly Harris – H
 Joanna Harris – D
 Francesca Hawkes – H
 Margot Hayward – H
 Melanie Ho – H
 Julianne Jakobek – D
 Nicole Jakobek – H
 Jenny Jeon – D
 So-Hyun Jeon – D
 Tyrah Kalman – H
 Sara Keshavjee – D
 Erica Kim – D
 So Yeun (Jennifer) Kim – D
 Soo Min Ko – H
 Ariana Kuperman – H
 Joyce Lam – D
 Teresa Li – H
 Angela Li – H
 Robyn MacIntosh – H
 Susanna Manziaris – H
 Linda Manziaris – H
 Sarah Miklas – D
 Elizabeth Milosevic – H
 Sarah Moor – D
 Alyssa Muzyk – D
 Ali Nullmeyer – D
 Jocelyn Nullmeyer – H
 Elizabeth Porco – H
 Wendy Pu – D
 Monica Radu – H
 Nabiha Rahman – H
 Olivia Rigby – H
 Madison Rosenberg – H
 Alessandra Scaini – H
 Madison Stephens – H
 Tess Syriopoulos – D
 Marie Syriopoulos – D
 Elizabeth Tkachuk – H
 Sandy (Hui Yi) Tse – D
 Meghan Tucker – H
 Hannah Van Den Thillart – H
 Angelina Vorobyeva – D
 Coco Wang – D
 Taylor Warkentin – H
 Sydney Weisz – H
 Caroline Williams – H
 Loren Yeung – H
 Chantel Yung – D

MARGARET TAYLOR HOUSE

Carys Baker – D
 Christina Baldanza – H
 Natalie Chan – H
 Kristy Chan – D
 Riya Chandaria – D
 Tina Chen – H
 Catherine Chiu – D
 Lauren Connolly – H
 Alara Crombie – D
 Madelaine DeGuerre – H
 Madeline Dewson – D
 Charlotte Dewson – D
 Keely Douglas – D
 Shannon Dowling – D
 Caroline French – H
 Sarah Gagne – H
 Marina Ghobrial – D
 Sarah Glickman – D
 Skye Herjavec – D
 Caprice Herjavec – D
 Julia Hou – D
 Nicole Howe – H
 Cassidy Hulton-Meade – H
 Marija Janjos – H
 Hyo Joo (Jenny) Kim – D
 Alexandra Koch-Fitsialos – D
 Vanessa Koo – D
 Madeline Liphardt Cann – H
 Ryan London – H
 Qin (Pen) Long – D
 Alexia Lucas – D
 Hayley MacVicar – H
 Caroline Marshall – D
 Victoria Maxwell – D
 Shannon McCabe – H
 Holly Mowbray – D
 Jessie Ng – D
 Jade O'Hara – H
 Elspeth Poulson – H
 Courtney Randle – D
 Rebecca Ranieri – H
 Natassja Reid – H
 Savannah Richardson – D
 Christina Richardson – H
 Casey Richardson – H
 Emily Ross – H
 Chelsea Rozansky – D
 Holly Rueter – H
 Annie Rueter – D
 Sarah Stewart – D
 Alexandra Strickland – H
 Samantha Strickland – D
 Stephanie Studer – D
 Ashton Topolinski – H
 Victoria Walter – D
 Hailey White – D
 Jamie Wood – D
 Sharon Xie – H
 Katrina Yeung – D
 Cynthia Zhou – D

MARIAN WOOD HOUSE

Alexandra Angelou – D
 Sascha Armour – H
 Nicole Berry – D
 Natalie Biringer – D
 Emma Bogler – D
 Emma Bray – D
 Katrin Callum – H
 Erin Caplice – H
 Sarah Caplice – H
 Lorraine Capone – D
 Isabelle Caven – D
 Jarita Chan – H
 Madison Coville – D
 Saima Desai – D
 Kayla Dharamshi – H
 Qian Hui (Jenny) Feng – D
 Ellen Ferris – H
 Akeesha Footman – H
 Ellen Fraser – H
 Katherine Fung – H
 Kylie Fung – H
 Kelly Goodman – H
 Mariya Gorlova – H
 Mawiyah Haq – D
 Anna Hardie – H
 Stephanie Higgs – H
 Julian Hsu – H
 Vanessa Koo – D
 Kimberly Kawaja – H
 Valerie Koo – D
 Charmaine Koo – D
 Amanda Kung – D
 Sydney Lau – D
 Imogen Levy – H
 Linda Li – H
 Rachele Li – H
 Tianna Lin – D
 Victoria McFarlane – D
 Ceilidh Mendelson-Grasse – D
 Madeleine Meneguzzi – H
 Meghan Meneguzzi – H
 Shamara Muriuki – H
 Julia Nakanishi – D
 Shivani Nathoo – D
 Rebekah O'Hare – H
 Carling Pang – H
 Eleanor Pilkington – H
 Clara Risk – D
 Stephanie Ronald – D
 Emma Schaffer – H
 Claire Sheeres-
 Pauliculle – H
 Orli Silverberg – D
 Karishma Singh – H
 Jasmine Smith – D
 Zoë Sullivan – H
 Kelly Thomson – D
 Natalie Treffry – H
 Priscilla Wang – D
 Meagan Wong – H
 Diana Wu – D
 Audrey Xu – H

The Green in Green & Gold

By Susan Pink

with contributions from Lisa Anderson, Barb Macintosh and Eva Siatkowski

At Havergal, we are striving to raise awareness about the significance of sustainability. This includes changing the way we think and operate in terms of the environment. Our focus is to continue to increase our knowledge and to develop actions for sustainability, particularly in the areas of energy, waste and water. Through creating awareness of the issues, and specific actions to address them, community members are encouraged to develop a greater appreciation of our natural world and to learn how to preserve it.

Here are a few examples that support our approach to sustainable practices associated with energy, waste and water consumption at Havergal.

Energy:

- Student-led small-scale alternative energy project: a group of students in the Upper School are investigating an alternative energy source to offset some of the school's current electricity resources.
- Energy-efficient lighting: when renovating spaces at the school, we replace light fixtures with energy efficient LED lighting whenever possible. Most recently, we included LED lights in the newly renovated Grade 10 bathroom and IT area.
- Anti-idling campaign: in accordance with the City of Toronto's idling control by-law 775-2010, we remind drivers not to idle their cars by posting no-idling signs in pick-up and drop-off areas.
- Earth hour is not just once a year: every day from 1:30 pm to 2:30 pm, the Junior School turns off its lights (wherever possible) to save energy and increase awareness about energy consumption. In the Upper School, we take advantage of the natural lighting in our classrooms (when possible).
- Bicycles at Havergal: to support the many cyclists of the community, we installed new bike racks to promote and encourage bicycling.

Waste:

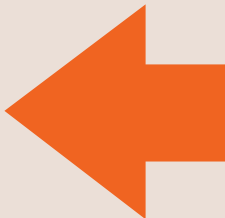
- Recycling: in addition to blue and green box recycling, we encourage students to repurpose and reuse materials for art and other projects. Last year, the Junior School Havergreen Girls implemented a Good On One Side (GOOS) scrap paper notebooks awareness campaign.

- Paper: we have reduced printing at the school significantly with the introduction to the PaperCut software program. The software tallies our printing costs, which reminds us to be more selective about printing documents.
- Reduction of carbon footprint: for the past few years, we have moved to electronic progress reports and other forms of electronic communications, including the Parent and Student Portals, the Back to School webpage and the *Family Handbook*. These initiatives have reduced the environmental impacts of printing and distribution.
- Electric hand dryers: we are gradually replacing paper towel dispensers in bathrooms with electric hand dryers to reduce the amount of paper waste produced.
- Composting: in the spring of 2012, Grade 12 student Samantha Bennett rallied to implement a composting program at Havergal. In the first five months of the program, we diverted six tons of waste from landfills.
- Battery collection: each year, we deliver enough batteries to the city's toxic waste stations to fill a 20-gallon barrel, diverting 20 gallons of toxic waste from landfills. These batteries come from the homes of faculty, staff and students.
- Water bottles: we have installed water filtration taps in offices and dining rooms and water bottle filling stations throughout the Upper School to encourage people to bring in their own refillable bottles to school.

Water:

- No drips: Junior School girls are reminded not to leave washroom taps running. We also installed touchless taps in the newly renovated Grade 10 bathroom so the faucets turn off automatically.
- The Junior School Water Challenge: last year, Junior School students learned about water usage and how our choices impact our fresh water supply. Students Alex Rozenberg and Corie Shyba designed special shower rings to remind us to take shorter showers.

For more on sustainability at Havergal and to learn about our outdoor classroom initiatives, visit us online at www.havergal.on.ca/sustainability. ■



The Meaning of Havergal's Community Partnerships: Students' Viewpoints

.....By Alice Jeon and Jamie Albaum.....



Alice Jeon and Jamie Albaum, Community Prefects

Looking back on another successful Celebration Saturday, we thought we'd shed some light on who our community partners are and the roles they play in our lives. We're writing this article because Celebration Saturday is not a fun fair; it is an event that honours the value of community partnerships and the significant impact these relationships have on the people involved.

The value of community partnerships in our lives rests on the broad understanding of what a partnership is. For us, a partnership is a symbiotic relationship in which both sides support and benefit from each other. Needless to say, this year, in the 12 community partnerships that the school supports,

each one fosters the importance of reciprocity. In a community partnership, Havergal students have the ability to share in the lives of young people in Toronto.

Our relationships with our partners are essentially friendships: we work together and rely on each other to ensure mutual benefits. For this reason, everything that we accomplish with our community partners is so much more rewarding.

As this year's Community Prefects, we would like to thank everyone who came out to Celebration Saturday and supported our community partnerships. ■

“ As volunteers, we get as much out of it as do the people we are working with. We formed a partnership of our own, in which we were both learning from one another. ”

—Alice Jeon 2013, volunteer with Derrydown Public School Community Partnership

“ Working in a community partnership engages us with our community. The buddies are the intended beneficiaries of the Best Buddies program, but I can definitely say that I gained just as much from working with them as my buddy did. ”

—Jamie Albaum 2013, volunteer with Best Buddies Community Partnership

Support the Rebuilding of Asomobi Lodge in Costa Rica



In July 2012, Havergal learned that the Asomobi Lodge was destroyed by an electrical fire. This lodge has hosted two Global Experience Program excursions, where students learned about the cooperative structure of Costa Rica's coffee business and worked on projects. To support the rebuilding, we urge you to purchase Havergal's Women Making a Difference coffee at www.havergal.on.ca/coffeeprogram/.

TEDx
HavergalCollege
x = independently organized TED event

TEDxHavergalCollege on November 3 brought us a morning of wonder and ideas as inspiring thinkers joined us to share their insights into “The World As We Don't Know It.” Priscilla Uppal shared with us that Plato was an Olympic medallist and encouraged us to remember the connection between physicality and great thinking. Marina Nemat spoke of the fragility of civil society and how we must always be prepared to protect and nurture our peaceful way of life. Mark Kingwell reinforced this message with his invocation that we must demand the impossible of ourselves and others, and not settle for ‘reality’ as we make decisions in life. All those in attendance departed stimulated, never to see the world in the same way again.

Students Act Now: Student Voice and Innovation

The Institute's First Student Innovation Award Presented to WalletFarm



At this year's Upper School Awards Ceremony, the Institute at Havergal presented the first ever Student Innovation Award to WalletFarm founders: Julia Hou, Lucy Luo, Cynthia Zhou and Jennifer Chen. These students produced felt wallets that resemble cows and other farm animals to raise funds for World Vision.

The purpose of this new award is to honour students whose innovative thinking has had an impact on a social problem, a business problem or any other problem for which a novel solution can be found. The WalletFarm group impressed the award selection committee with the complexity of their ideas to use micro-enterprise to support micro-enterprise. Their model is sustainable both because the animals they

purchase provide immediate and longer-term revenue to communities, enabling families to support themselves, and because of their commitment to working with younger students to share their learning and their approach to change.

If you know a student involved in an innovative project, please send in your nomination for next year's Innovation Award to the Forum for Change.

How Celebration Saturday Supports Our Community Partnerships

Celebration Saturday is a long-standing Havergal tradition begun by Old Girls and dating back many decades. All the proceeds raised at Celebration Saturday support Havergal's community partnerships. Havergal's student leaders work directly with our community partners to identify opportunities to support our partnerships. In the coming months, Havergal's Community Council student members will allocate the funds raised at Celebration Saturday among our community partnerships. For an understanding of how we strengthen our programs, in 2011, funds raised from Celebration Saturday:

- provided marketing materials, costumes and equipment for Appletree Farmers Market.
- enabled ArtHeart to run after-school programming two days per week by supporting a stipend for staff.
- provided food and programming costs for five communal Best Buddies events, where our students shared friendships and life experiences with their buddies.
- sent one child to Camp Kirk, a camp for children with disabilities, for 14 days.
- purchased a class set of 12 iPads and provided professional development training for Derrydown teachers on applications and functionalities of iPads at Derrydown Public School.
- provided supplies and resources for a shared project to explore Canadian citizenship for Grenoble Public School, which is located in Flemington Park, a community of new Canadians.
- provided graphic novels to support the after school literacy program at Lawrence Heights Middle School, where our students volunteer and work with their buddies on reading and homework.
- provided three shelves for the books used in the literacy program at Lotherton Pathways, a table for the ANC program space and three tents for community festivals.
- supported Moorelands Baby Bundles Program by providing basic baby supplies and clothes to new mothers in Flemington Park.
- provided a small salary and professional development for Siyawela Ark's "local One Laptop Per Child hero" Portia to develop the OLPC program, which we introduced at the Nurturing Orphans of AIDS for Humanity (NOAH) Arks.
- provided 60 pairs of running shoes, T-shirts, books and school supplies for the Public School location where we volunteer at the Running and Reading Program as a part of Start2Finish.
- provided spoken word workshops, art supplies, lunches and snacks for Trails Youth Initiatives participants in our shared programming.
- provided new textbooks for our partner, the Whittlesea GAP school, as a part of the Triangle of Hope program that supports the rapidly changing curriculum in South Africa. ■



Make a Difference with a Charitable Gift

Havergal's culture of philanthropy has thrived over many decades through support from members of our community. Charitable giving can be an important pillar of your financial plan and can have a significant and lasting impact on Havergal College.

Substantial resources are required to maintain—and advance—Havergal's standard of excellence. We seek support from all community members—parents, Old Girls, faculty, staff, grandparents and friends—to provide the finest education for our students. Establish *your* endowment today and support an area at Havergal that is meaningful to you—bursary, curriculum enrichment, professional development and more.

With a minimum commitment of \$25,000 you can establish a named endowment in honour of your daughter(s), your family or in memory of a loved one.

Consider establishing your named endowment with five yearly installments of \$5,000 or an out-right gift. We invite you to join with us now in supporting Havergal with a major gift commitment. Help make a lasting impact on the lives of our students.

For more information, please contact Heather McLean, Senior Development Officer at 416.482.4707 or hmclean@havergal.on.ca.



Annual Giving: Powering a Culture of Philanthropy

Your donation is an investment in our students' education and the future of Havergal College.

Every gift counts; participation from the entire Havergal community is the key to our success.

In order to receive a tax receipt for the 2012 year, your donation must be post-marked or completed online at www.havergal.on.ca/support no later than December 31, 2012.

For more information, please contact 416.482.4703 or cetherington@havergal.on.ca.

Thanks to those of you who have already made your 2012–2013 annual gift.

Learning

Through a Guided Inquiry Framework

.....By Nicole Davies.....



Nicole Davies,
Junior School Teacher
Librarian

In our complex information age dominated by the Internet, students cannot possibly learn all the content there is to know. Teachers must move away from an emphasis on learning facts and shift towards teaching students how to learn and how to take responsibility for their own learning. Students must become critical consumers of information as well as knowledge builders. The massive amounts of information available at our fingertips requires us to teach our students how to filter information for quality and accuracy, synthesize it for relevance and build and apply knowledge through connection-making and idea generation.

The Guided Inquiry framework is a teaching and learning methodology that promotes the development of a community of learners while building the important research and inquiry skills that are required by 21st century students. It offers a flexible method of integrating skills in a way that is relevant to students. Using this framework, teachers help students focus on a question or problem, which they are then required to investigate using a wide range of information sources. Within a given area of the curriculum, an instructional team of teachers, including the classroom teacher, teacher librarian, information technology teacher and STEM teacher, work together as appropriate to support student understanding. The Guided Inquiry process requires students to be curious problem solvers in order to answer their own questions and to build understanding of complex concepts. It puts students in the driver's seat of their own learning within a framework designed by the teacher. This process

helps students to recognize that they can be more than knowledge consumers—they can be knowledge builders.

In both the Junior and Upper Schools, teachers are developing Guided Inquiry units of study. For example, students in Grade 5 are learning about ancient civilizations through a series of Guided Inquiry sessions. At a recent inquiry session, students explored ideas about how the modern world has been influenced by the innovations of early civilizations. While rotating through 12 inquiry stations—each containing a different modern day artifact such as makeup, a calendar and paper—students were asked to decide where and when each artifact was invented. Working in small groups, students shared their ideas and recorded their thinking in their inquiry journals. In a subsequent session, students revisited each of the 12 stations, which now included written information and photographs about where and when each artifact was actually invented. Students were amazed to learn that each artifact was actually an ancient innovation. This process guided students toward an understanding that early civilizations were sophisticated, technologically advanced societies that are strongly linked to our lives today. It allowed the students to construct this understanding for themselves, rather than being told the information by their teacher.

As educators rethink what 21st century students may need in order to successfully live and work in our complex and unpredictable world, Guided Inquiry is one strategy that Havergal teachers are using to help our students navigate the changing world. ■



Supporting



Student Success

.....By Young Um

As articulated in the school's current strategic plan, "A Culture of Capability," teaching and learning efforts at Havergal College have, over the past four years, focused on the Whole Girl to ensure that each student reaches her individual learning potential. Faculty and staff have worked collectively to develop programs and opportunities to enrich learning for all students and to ensure that each girl is known and supported for who she is.

Five school-wide committees were established to support a culture of capability that mentors, monitors and honours students. One of these committees developed the document *Learning at Havergal College*, which outlines how to support all learners. As part of the strategic direction, Carrie Steele was hired as the school's Learning Support Specialist in September 2011. Ms. Steele has a Master of Education in Adaptive Instruction and Special Education from the Ontario Institute for Studies in Education (OISE) and received a Bachelor of Arts and a Bachelor of Education from York University. She is known in independent school circles for her leadership in working with faculty to develop and implement individualized learning plans and instructional strategies to help all students learn more effectively.

"Every student has a distinct learning profile. It is our responsibility as educators to understand the learning needs of our students," Ms. Steele says. "We work as a team to develop and implement strategies to support student learning and to help all of our students achieve success."

For students who have been identified as having a learning disability through a psychological-educational assessment (a formal assessment by a psychologist of a

student's learning needs), the school provides additional support.

"Through an assessment, the school has a better understanding of the learning profile of an individual student. Then, by providing the recommended accommodation, a student is supported in her learning. She is given a way around or over the barriers that impact her ability to demonstrate what she has learned," says Lois Rowe, Vice Principal. "We need to demystify the idea of a learning disability. Being identified with a learning disability does not mean that a student is not capable; it means that there is a barrier or bottleneck to her being able to demonstrate that she is capable."

Ms. Steele reviews psychological-educational assessments and works closely with Guidance Counsellors, teachers, students and parents to develop individual student learning plans and to support the teachers, as they support the students in the classroom. She determines the strengths and needs of individual students and provides them with specific skills instruction, strategies and accommodations, which they may need in the form of additional time, space or access to assistive technology. She monitors and assists students, supports teachers and communicates with parents about their daughter's progress.

"Carrie Steele is an expert on what it looks like when a child hits a speed bump and how learning challenges become apparent in a classroom setting," says Ms. Rowe, noting that every one of us has speed bumps. "Once a student's speed bump is identified, we can focus on identifying her strengths, providing the right supports and developing strategies—the scaffolding—so she can get around her own speed bumps."



Working closely with Seonaid Davis, Director of Curriculum & Faculty Development, Ms. Steele looks at learning challenges within the context of curriculum content. The school continues to teach at the pace and depth of curriculum that a Havergal education is known for; modification of curriculum expectations is not a feature of the Havergal learning model.

Ms. Steele provides targeted professional development for faculty and staff and manages school team meetings to discuss the progress of individual students. “Everybody needs to take collective responsibility for the overall wellbeing of each and every student. They are our students,” she adds.

In the Junior School this school year, Eva Siatkowski is working with Ms. Steele to support our youngest learners. Having received professional development in the Orton-Gillingham P1 Approach, which is a prescriptive and structured way to teach language acquisition, Mrs. Siatkowski is using her 20 years of teaching experience in a different capacity. She implements learning strategies in the Junior School and works with students to develop literacy and numeracy skills. “My role allows me to provide more individualized programming to the girls in the Junior School,” Mrs. Siatkowski says.

Mrs. Siatkowski and Ms. Steele provide support both in and out of the classroom, working with small groups and individual students. Ms. Steele also observes students in their classroom so she can better help them to achieve their goals in a positive manner. Last school year, she piloted a reading buddy program in the Junior School to raise literacy skills, as well as homework sessions for Upper School students to help them manage and complete outstanding assignments before exams.

Ms. Steele is also focused on helping parents better understand their daughter’s learning needs and how to support her. “Parents can support their child by advocating for them and working in partnership with the school. In this way, we can help students develop the self-advocacy skills they need as they move beyond the school into the world of university and work.”

TEAM APPROACH TO SUPPORTING STUDENTS

“Supporting student success is a collaborative effort. It takes everyone working together to support the learning needs of students,” says Sarah Bruce, Head of Upper School. “We’re helping students build their innovative intelligence, express their opinions and think critically. These skills will help prepare students for their future.”

|||||

In the Spring 2013 issue of *The Torch*, we’ll discuss what strategies teachers use in the classroom to support student success.

|||||

Learning disabilities refer to a number of disorders that may affect the acquisition, organization, retention, understanding or use of verbal or nonverbal information. These disorders affect learning in individuals who otherwise demonstrate at least average abilities essential for thinking and/or reasoning. As such, learning disabilities are distinct from global intellectual deficiency.

Learning disabilities result from impairments in one or more processes related to perceiving, thinking, remembering or learning. These include: language processing; visual-spatial (perceptual) processing; executive functioning; phonological processing; memory and attention; processing speed; and visual-motor skills. Learning disabilities may also involve difficulties with organizational skills, social perception, social interaction and perspective taking.

Source: Learning Disabilities Association of Canada



Ms. Bruce and the Guidance Counsellors host progress meetings twice a year per grade. At these meetings, a team of 50 faculty members including Ms. Steele discuss student learning needs by grade and identify those who may need additional support, whether that be academic, social-emotional or behavioural. As a team, they discuss each child's learning style (strengths and needs), review any presenting concerns and collaborate on strategies to address the learning needs of individual students.

On a day-to-day basis in the Upper School, Guidance Counsellors look at the whole student experience. The Guidance Department offers a multitude of student services, including academic and university counselling, and provides ongoing documentation of the learning needs of identified students. They collaborate with students, teachers and parents to promote student success.

"Teachers are invested in the 'whole girl' and they play a holistic, supportive role," says Heather Johnstone, Head of Guidance, noting that counsellors follow-up with teachers about concerns related to student behaviour, actions and learning. "As Guidance Counsellors, our goal is to know the students, their academic needs, interests and skills, and to advocate for them. We help them figure out who they are as learners, guide them on the pathway to achieving whatever goals they have set for themselves and help them navigate their social-emotional needs."

In part, this is accomplished through continued monitoring, regular one-on-one meetings, grade group meetings and special events (grade and age-appropriate programs), in addition to Career Studies curriculum, which is a half-credit Guidance compulsory course. The school's student information system allows faculty and staff to easily access information about each student, including her academic progress and participation in co-curricular activities.

In the Middle School, Heather Grant supports the school lives of these students. "I have the opportunity to help students find and explore their passions and interests and to navigate who they are going to become," says Ms. Grant, Middle School Guidance Counsellor and Director of Middle School Student Life.

Each of the four Guidance Counsellors in the Senior School is responsible for advising two or three Houses. The strength of this system is that, by graduation, they know each student very well.

"We have the opportunity to meet the girls in Grade 9 and to watch them develop into focused and articulate young women who have clear goals for the future," Ms. Johnstone says. "Together, all the adults in each student's life—TAs, Form Teachers, Grade Advisors, Guidance Counsellors, administrators, subject teachers, coaches and advisors—monitor and mentor each girl's progress to ensure she is engaged in life at the school, focused in the classroom and prepared for her future." ■



The Changing Needs of our Infrastructure

..... By Lisa Anderson



Lisa Anderson,
Director of Facilities

As a leader in girls' education, Havergal must continue to provide the best learning environment and facilities for members of our community. The school's previous Master Plans have enhanced the campus in a sustainable, environmentally responsible manner that embodies the most current thinking on education and facility design while respecting its singular heritage. With that in mind, the Board of Governors is currently working to develop a new Master Plan that anticipates the changing needs in approaches to learning and teaching in a 21st century environment. The new plan and proposed implementation and phasing strategies will be designed with the goals of:

- enhancing Havergal's campus image and identity
- creating exemplary 21st century learning environments
- preserving a sustainable, green campus
- developing an improved network of connections/linkages
- providing appropriate amenities and support spaces
- developing a sequential implementation strategy

Although still in development, we started making improvements to the campus over the summer of 2012 that are in-line with the themes and goals of the new Master Plan. These renovations include:

The Learning Hub: An Innovative Learning Space in the Junior School

We opened up the library and technology lab spaces to form the Junior School's Learning Hub. This is a newly designed learning space where information, technology and inquiry come together in an integrated way to foster 21st century thinking (see article on page 15).

The Learning Hub is a multi-purpose space where students can easily move from one room to the other. We replaced heavy and static furniture with adaptable and functional pieces. We expanded

electronic resources and streamlined our print resources. Throughout the Learning Hub, student learning is supported with access to technology, including laptops, desktops, iPads and interactive white boards (with a new seven-foot wide projector). We added a sound studio for digital recording of student podcasts, music and voiceovers.

Two Multipurpose Learning Strategist Rooms for Junior School Students

The new Multipurpose Learning Strategist Rooms (located on the second floor) are learning support spaces for Junior School students. We repurposed rooms that were formerly a print room and an office to accommodate the needs of our Junior School students. The rooms are spaces for groups or individuals and they act as hubs of student-focused learning.

A G&G Mini Shop in the Junior School

We transformed a space in the foyer in the Junior School for the new "G&G Shop." Our parent volunteers work in the shop and sell T-shirts, hairbands and other Junior School Havergal items.

The Junior School Admission Office Relocated

A prospective family's first impression of the Junior School begins at the Junior School Admission Office, which is why we moved the office to a space more central to student-life. The new office is now in a space where prospective students and their parents can see the school in action.

Renovated Pick-Up and Drop-Off Areas at the Junior School

In order to improve the efficiency of drop-off and pick-up, we widened the driveway at the front of the Junior School. This allows for safer and more

efficient procedures for the pick-up and drop-off of the girls and will reduce the idling of cars, which is not permitted in the driveway.

Resurfaced Bridge

To prevent slips and falls and to allow for easier access between the Upper and Junior Schools, we resurfaced the bridge with a heavy duty, non-slip deck coating. To prepare the surface of the bridge, we used walnut shells as an environmentally friendly alternative to sand blasting.

Grade 10 Bathroom Renovation in the Upper School

We renovated the Grade 10 bathroom, near the Chapel, with elegant spa-like sinks and modern, hands-free faucets. We replaced the older light fixtures with energy efficient LED lighting and, in keeping with Havergal's sustainability program, we replaced the paper towel dispensers with an electric hand dryer.

Brenda Robson Hall Window Restoration

Before the Upper School addition in 1999, the Labatt North Quad was a playing field for Havergal students. At the time, the

school installed plexiglass to the stained glass windows for protection. However, this plexiglass prevented proper air circulation to the glass and the came (the lead between the glass), which damaged them. This summer, a team of restoration workers removed the plexiglass and restored the windows and came on the east-facing windows. The newly restored windows look beautiful. We will begin the restoration process on the west-facing windows in the summer of 2013.

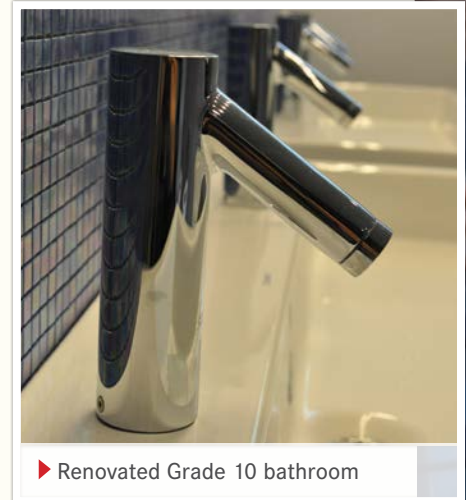
Ellen Knox Library Window Restoration

The windows in the Ellen Knox Library are original to the building (1926). Throughout the year, we will repair the windows to help improve efficiency in the school's heating and cooling efforts. These 86-year-old windows are unique to the school's architecture.

Math Office Renovations

We reconfigured the workstations in the Math Office allowing for the addition of a new conference table. Teachers can now meet with other teachers and with students in a more collaborative way.

Look for future updates about improvements to Havergal's facilities on our website: www.havergal.on.ca.



▶ Renovated Grade 10 bathroom



▶ Restored stained glass windows in the Brenda Robson Hall

'Outdoor Naturalized Learning Space' Project Launches

The concept: To create an outdoor naturalized learning space that fosters creative play and games, provides a space for quiet reflection and group interaction and nurtures curiosity and a respect for nature.

What is possible? Through careful development of our existing green space, the school can create an outdoor naturalized learning space that enhances the schools facilities, enriches teaching and learning and inspires imaginative play. This will extend the Burke Brook Stewardship Project containing the Lisa Hardie Woodland Trail. The area to be developed lies between the Junior and Upper Schools and the Burke Brook.

Project update:

- Funds have been set aside to begin work on this project; proceeds from the Gala on May 4, 2013, will also help support this project.
- A technical working group has been assembled: Leslie Anne Dexter (Chair), Head of Junior School; Lisa Anderson, Director of Facilities; Kevin Daly, Junior School Parent and Member of the Board of Governors; John Kerr, Grounds Manager; Ann Peel, Director of the Institute; Darryl Reiter, Junior School Faculty and STEM Teacher; Katy Sisley, Junior School Parent and HOGA representative; and Louise Yearwood, Executive Director of Advancement & Community Relations.
- Members of the Havergal community are invited to speak with any member of the technical working group to find out more about this project.

GOOD TIDINGS TO YOU

With all good wishes for a joyous 2013 from the Havergal family to yours.



Get Involved – Volunteer with the HCC!



By Joanne Gooding, HCC Chair 2012–2013

The Havergal Community Committee (HCC) is your parent association. We are a committee of 30 parent volunteers who act as liaisons between the parent body and the faculty, staff and students at Havergal.

We also organize and manage a number of school activities and events, including the Used Uniform Sale, the Father Daughter Dance and the Staff Appreciation Luncheon. For these to be successful, we need your support.

Join the more than 250 parents who volunteer with the HCC each year. You can volunteer for a single event or throughout the year—we have positions that work with every schedule.

Become an integral part of your daughter's life—be an HCC volunteer—and share your time and talents with the school. It's both fun and rewarding. Volunteering is also a great way to connect with other parents, gain a better understanding of the school and make lifelong friendships. To volunteer online, visit www.havergal.on.ca/volunteer or email volunteer@havergal.on.ca.

“Havergal Stories” – New Video Series

In September 2012, Havergal launched a new video series as part of its advertising campaign for this year—“Havergal Stories.” From the perspective of students, faculty, a parent and an Old Girl, the 11 new videos authentically capture both the every day and the magical moments at Havergal. Viewers will find out what makes Havergal so special and why we love our school. Share in the journey... discover our “Havergal Stories” at www.havergal.on.ca/HavergalStories.



The 2013 Annual Havergal Family Skating Party

Old Girls, students, faculty, staff, families and friends are invited for an afternoon of fun on the ice!

Where: Toronto Cricket Skating & Curling Club
(141 Wilson Avenue, east of Avenue Road)

Date: Sunday, February 3, 2013

Time: 4:00 pm to 6:00 pm

Cost: \$15 per family or \$5 per person
Pay parking available on site

To register, contact Helena Follows at hfollows@havergal.on.ca or 416.482.4706.



Branch Reunions for Old Girls around the World

With more than 8,000 Old Girls in more than 60 countries around the world, the Havergal Old Girls Association is dedicated to hosting Old Girl Reunions in cities across the globe.

2012-2013 Branch Reunion Schedule

Principal Dr. Susan R. Groesbeck has a number of visits planned for this year. In late October and early November, she visited seven cities in Asia as part of The Association of Boarding Schools (TABS) Asia Fairs and hosted a series of Old Girls events. In late February 2013, she will visit Amelia Island, Florida and in late February/early March 2013 she will visit Philadelphia, Pennsylvania.

Look for more details regarding the upcoming reunions in these cities in the *Connections* e-newsletter and on the Old Girls Online Community.

If you are interested in helping to organize a reunion in your area, please contact Christine Lawson at 416.480.6524 or clawson@havergal.on.ca.

Community Events

To view a list of community events at Havergal for the rest of the school year, visit the Old Girls website at www.havergal.on.ca/oldgirls.

Stay connected...

Do we have your email address? The e-newsletter *Connections* is sent to all Old Girls on a monthly basis. *Connections* is your way to get the inside scoop on what is happening in the Havergal community, receive up-to-date event and activity information, view photos of past events and read personal news and achievements from other Old Girls. To receive *Connections* please send your email address to Helena Follows at hfollows@havergal.on.ca.

Do You Know These Old Girls?



This photograph from 1975 is just one of the thousands in the Dr. Catherine Steele 1928 Archives that are not identified. If you love looking at old photos, why not volunteer in the Archives for a couple of hours? Come in once, twice or even more.

If you have pictures or items you would like to donate to the Archives, or if you are interested in volunteering your time in the Archives, please contact Christine Lawson at 416.480.6524 or clawson@havergal.on.ca.

The Havergal Old Girls Online Community

Keeping US Connected
Beyond the Ivy
www.havergal.on.ca/oldgirls

If you require assistance accessing your username or password, please contact hfollows@havergal.on.ca



Like us
www.facebook.com/HCOldGirls



Network with us
Search 'Havergal College Old Girls'



Tweet with us
www.twitter.com/HCOldGirls



Old Girls—Share Your News



It's time to think green and gold and share your news with your fellow Old Girls in the 2013 *Chronicle*! Tell us what's new—share your milestones, health updates, volunteer pursuits, career moments, travel highlights and achievements. Your classmates want to hear from you!

Send your news via email to clawson@havergal.on.ca or directly to your Class Rep. News must be received by March 2013 in order to be included in the 2013 *Chronicle*.

Remember: pictures say a thousand words, so if you have photos to share please send them to the Old Girls Office at Havergal College, 1451 Avenue Road, Toronto, ON, M5N 2H9. Please identify the Old Girls in the photo and mark your name and year on the back of the photos if they are to be returned. You can also email your photo (please send as an attachment) to clawson@havergal.on.ca.

Reunion Weekend 2012

Graduating classes ending with '2 and '7 returned to Havergal on Saturday, September 29 and Sunday, September 30 to reconnect with former classmates and with the Havergal community. On Saturday, many Old Girls checked in at the Old Girls Welcome Desk in the Rotunda, enjoyed a cup of coffee in the Hava Java Coffee House, joined in Celebration Saturday activities and played basketball and field hockey against current students. On Saturday night, the Reunion Years Cocktail Party brought together more than 275 Old Girls to mix and mingle with friends, classmates and former staff in the Brenda Robson Hall before moving on to their special class celebrations. Old Girls were back at school early on Sunday morning to attend the Old Girls Chapel Service in the Brenda Robson Hall. The Class of 1962 attended a special luncheon honouring their 50th Reunion. Thank you to everyone who helped make Reunion Weekend so special!

Classes ending with '3 and '8 will celebrate reunions next year. Mark your calendars now for 2013!

H A V E R G A L
Old Girls
A S S O C I A T I O N





Please Support Havergal Today!



You make a difference!



call with your credit card
number at 416.482.4703



Mail your cheque, made payable to
The Havergal College Foundation



Go online to
www.havergal.on.ca/support

Thanks to the continuous support from community members like you, Havergal is a leader in education.

**Every gift to our Annual Giving Program
is important and valued.**

(The fiscal year at Havergal College runs from July 1, 2012 to June 30, 2013)



Annual Giving

Questions? Contact: Advancement & Community Relations,
416.482.4703 or cetherington@havergal.on.ca

Havergal College and
The Havergal College Foundation

**Annual Report
2011-2012**



Our sincere thanks
to our many donors who
collectively contributed \$1,400,000
to the Havergal College
2011-2012 Annual Giving Program.
We are most grateful for
your generous support.

Havergal College and The Havergal College Foundation Annual Report 2011-2012

CONTENTS

| | |
|---|----|
| Message from the Chairs. | 29 |
| Havergal College Board of Governors and Foundations. | 30 |
| 2012-2013 Profiling Our New Board Members and Foundation Trustees | 31 |
| Financial Information | 32 |
| Endowment at Havergal 2011-2012 | 34 |
| Annual Giving: Havergal Circle Donors | 36 |
| Annual Giving: Ivy Society Donors | 38 |
| Annual Giving: Ellen Knox Society | 39 |
| Annual Giving: The Class of 2012 Endowment for the Arts | 40 |
| Annual Giving: Green & Gold Society. | 41 |
| Annual Giving: Gifts from our Parent Community | 43 |
| Annual Giving: Gifts from our Old Girls Community. | 46 |
| Annual Giving: Gifts from Other Community Members | 50 |

GIVING SOCIETIES

| Donor Recognition | Giving Level |
|----------------------------------|---|
| Havergal Circle | \$25,000+ cumulative giving |
| Green & Gold Society: Champion | \$10,000 - \$24,999 |
| Green & Gold Society: Benefactor | \$5,000 - \$9,999 |
| Green & Gold Society: Patron | \$1,000 - \$4,999 |
| Ivy Society | 10+ fiscal years of consecutive donations |
| Ellen Knox Society | Planned gifts, future and realized |

NOTE: Every effort was taken to ensure the accuracy of the information contained within this Annual Report. We apologize for any errors that may have occurred in the listing or spelling of names and ask that you advise us by calling 416.480.6521.

Havergal's Culture of Philanthropy

It has been our privilege to serve Havergal College during the fiscal year 2011-2012 as Chair of the Havergal College Board of Governors and Chair of The Havergal College Foundation. These volunteer roles are important ways for us to assist in the stewardship of this outstanding educational institution as well as to demonstrate to our own children the importance of giving back.

By definition, philanthropy is a "love of mankind" and speaks to the many ways we can express engagement in life by giving our time and resources to causes and things we respect and appreciate. As you know, giving back to Havergal by volunteering, mentoring and donating are not only long-standing pillars of our community philosophy, but also important strategic components of our culture of capability.

As giving is a significant component of philanthropy, it is especially appropriate to take this opportunity to offer our sincere gratitude to the many generous donors who gave to the school this past year. Several of you chose to make a major gift and, for this, we are grateful. Giving and participating at any level is the most important action for all of us.

We hope that you will continue to make Havergal one of your family's charitable priorities in the years to come and we thank you for your many contributions toward Havergal's culture of philanthropy. With your ongoing support, Havergal will continue to flourish and grow.



Eden Oliver 1978
Chair, Havergal College Board of Governors



Patrick Meneley
Chair, The Havergal College Foundation

Havergal College

Board of Governors and Foundations

Havergal College Board of Governors

The Board of Governors is responsible for the overall stewardship of Havergal College. The Board sets broad policy directions through strategic planning and goal-setting and ensures the financial stability of the school. The Board is responsible for appointing the Principal, to whom it delegates authority over the administration of the school and matters of curriculum and staffing. In keeping with membership requirements of the Canadian Accredited Independent Schools, the Board oversees the school and remains at arm's length from the administration.

Members 2011-2012

Eden Oliver 1978, Chair
Ann Kerwin
Jenny Andison
Dino Clarizio
Rachel DeBlois 1992
Steve Dent
Julie Di Lorenzo 1982
Aidan Flatley
John Francis
Nancy Griffin
Mansoor Husain
Barrie Laver
Chris Matthews
Dale McIntosh 1992
Michael Meneguzzi
Patrick Meneley
Cathy Nullmeyer
Martha Cohen Simmons 1999
Peter Stavropoulos
Edwina Dick Stoate 1975
Alexandra Warly 1983
Jannet Whitehead

Sue Groesbeck, Principal
Kate Balsara-Pardoe, Corporate Treasurer
Jill Azis, Corporate Secretary

The Havergal College Foundation

The Foundation receives and invests donations intended for Havergal College infrastructure, student assistance and other programs. It oversees the investment of funds raised by the Havergal community, ensuring that the assets of the Foundation are invested in a prudent and effective manner. The Havergal College Foundation is a registered charity under the Income Tax Act (Canada) and, as such, is exempt from income taxes and may issue receipts to donors for income tax purposes. The Foundation is incorporated as a corporation without share capital under the laws of Ontario and its Board of Trustees is independent of Havergal College.

Foundation Trustees 2011-2012

Patrick Meneley, Chair
Susan Ditchburn
Kendra Dawson Doersam
John Francis
Barry Gordon
Sue Groesbeck
Lois Smith
Tim Stinson
Richard Willoughby
John Zechner

Kate Balsara-Pardoe, Treasurer
Louise Yearwood, Secretary

The Havergal College Educational Foundation Inc. (U.S.)

The Havergal College Educational Foundation Inc. (U.S.) was incorporated in 1977 in New York to allow U.S. donors to make gifts to Havergal. The U.S. Foundation makes grants to The Havergal College Foundation in Toronto to support the programs and activities of the school.

Directors 2011-2012

Louise Park MacMillan 1972, Chair
Paul Battaglia
Christine Lay 1981
Cynthia Rutherford Patry 1988
Leta Karrys Stathacos 1949
Sareena Ghulati Wildberger 1988
Cynthia Thun Willauer 1958

2012-2013: Profiling Our New Board Members



Kevin Daley

Mr. Daley is a professional logistician with his own consulting and coaching firm. He retired from the Canadian Army as a

Lieutenant-Colonel following 23 years of service. Mr. Daley is a graduate of St. Mary's University and the Canadian Forces College. He is a Junior School Havergal parent.



Jennifer Dolman 1984

Ms. Dolman is a partner in the Toronto office of Osler Hoskin & Harcourt LLP where she has been

practicing commercial litigation since 1992. She is both a proud alumna and a Middle School parent. Ms. Dolman holds a BA from the University of Toronto and an LLB from McGill University.



Joanne Hyde Gooding 1982

Mrs. Gooding is the Chair of the Havergal Community Committee. She has been a long-time supporter of the

Havergal Old Girls Association and has been the 1982 Class Rep for the past 25 years. She holds a Bachelor of Commerce from Queen's University. Her daughter is in Grade 11 and her son attends SHS.



Melanie Plet 1992

Ms. Plet is the Vice President of the Havergal Old Girls Association and a long-time Havergal volunteer and supporter.

Ms. Plet was Lower School Prefect in her

graduating year. Professionally, Ms. Plet is a psychotherapist; however, she is currently at home raising her four children.



Sean Regan

Mr. Regan is a Senior Vice President with Cara Operations and President of Gen5 Networks. Prior to completing his MBA, Mr.

Regan worked as a commercial helicopter pilot focused on tourism and forestry. He is a proud father of three, with the youngest of his children currently enjoying her experience in the Junior School.



Marianne Taggio

Ms. Taggio is an accomplished corporate leader with a 25-year career in the financial services industry. She is a Certified Corporate

Director who is involved in community improvement and supports women and children's organizations. She is a Havergal parent and the proud mother of three children.



Richard Willoughby

Mr. Willoughby is a Partner at Torys LLP in Toronto. He is the Chair of The Havergal College Foundation Board

and serves on other Boards for charitable causes. His wife, Margot, is a Havergal Old Girl and the Institute Liaison on the Havergal Old Girls Association Directorate. They have one daughter currently attending Havergal.

Foundation Trustees



Christine Morin-Higgs

Originally from Montreal, Ms. Morin-Higgs is a graduate of Queen's Economics. She started her career

at BMO Nesbitt Thomson and then moved to RBC Dominion Securities. Married to Gavin Higgs, they have a son at Crescent School and a daughter in Grade 8 at Havergal. She also serves on the Havergal Father-Daughter Dance Committee.



Andrew Moor

Mr. Moor is the President and Chief Executive Officer of Equitable Trust. He holds an MBA from the University of British

Columbia and a BSc (Eng) from University College London. He is married to Mags and they have three children, their youngest is currently in Grade 12 at Havergal.



Jill Denham

Ms. Denham is a corporate director and has worked in investment and merchant banking, commercial banking

and ecommerce. Ms. Denham is a director of National Bank of Canada, Morneau Shepell, PennWest Corporation and Munich Re Canada. She holds an HBA from the University of Western Ontario and an MBA from the Harvard Business School.

Financial Information

Havergal College Consolidated Statement of Financial Position

| AS AT JUNE 30 | 2012 | 2011 |
|--|-------------------|-------------------|
| | \$ | \$ |
| ASSETS | | |
| Current | | |
| Cash and cash equivalents | 21,169,230 | 16,143,656 |
| Tuition fees receivable | 2,334,200 | 2,301,830 |
| Other accounts receivable | 129,828 | 291,188 |
| Other | 468,550 | 475,712 |
| Total current assets | 24,101,808 | 19,212,386 |
| Deferred pension asset | 901,779 | 995,922 |
| Capital assets, net | 28,665,524 | 29,390,531 |
| | 53,669,111 | 49,598,839 |
| LIABILITIES AND NET ASSETS | | |
| Current | | |
| Accounts payable and accrued liabilities | 3,020,310 | 2,777,762 |
| Prepaid tuition fees | 21,009,391 | 19,944,881 |
| Total current liabilities | 24,029,701 | 22,722,643 |
| Working capital deposits | 6,000 | 13,500 |
| Deferred capital contributions | 11,793,659 | 12,282,799 |
| Total liabilities | 35,829,360 | 35,018,942 |
| Net assets | | |
| Unrestricted | 13,888,951 | 11,661,097 |
| Internally restricted | 3,950,800 | 2,918,800 |
| Total net assets | 17,839,751 | 14,579,897 |
| | 53,669,111 | 49,598,839 |

Havergal College Foundation Balance Sheet

| AS AT JUNE 30 | 2012 | 2011 |
|---------------------------|-------------------|-------------------|
| | \$ | \$ |
| ASSETS | | |
| Cash and cash equivalents | 867,723 | 1,530,557 |
| Other investments | 15,678,921 | 15,150,167 |
| | 16,546,644 | 16,680,724 |
| FUND BALANCES | | |
| General Fund | 332,937 | 312,937 |
| Restricted Fund | 1,757,389 | 1,695,811 |
| Endowment Fund | 14,456,318 | 14,671,976 |
| | 16,546,644 | 16,680,724 |

Grants from The Havergal College Foundation to Havergal College

During the year The Havergal College Foundation made grants to Havergal College for the following purposes:

| AS AT JUNE 30 | 2012 | 2011 |
|----------------------------|----------------|----------------|
| | \$ | \$ |
| Student assistance | 350,000 | 275,000 |
| Program enrichment | 384,450 | 389,585 |
| Capital asset acquisitions | 40,550 | 12,425 |
| | 775,000 | 677,010 |

How We Fund Havergal

FOR THE YEAR ENDED JUNE 30, 2012

\$

REVENUE SOURCES

| | |
|--|-------------------|
| 84.9% | 26,007,900 |
| Tuition and one-time property upkeep payment | |
| 2.4% | 734,450 |
| Annual Giving and Endowment Fund Income | |
| 5.4% | 1,642,360 |
| Interest and other revenues | |
| 5.6% | 1,713,240 |
| Gross revenues from Green & Gold Shop, Extended Day Program, facilities rentals, food service sales, etc. | |
| 1.7% | 529,690 |
| Deferred Capital Contributions | |
| 100.0% | 30,627,640 |

Havergal Expenditures and Capital Revenues

FOR THE YEAR ENDED JUNE 30, 2012

\$

ANNUAL EXPENDITURES

| | |
|---|-------------------|
| 57.9% | 16,434,310 |
| Teaching | |
| 6.0% | 1,695,920 |
| Household and boarding | |
| 9.4% | 2,670,550 |
| Building and property services | |
| 7.6% | 2,161,840 |
| General and administrative | |
| 4.3% | 1,225,730 |
| Communications and advancement | |
| 1.7% | 494,100 |
| Student assistance program | |
| 3.2% | 909,960 |
| Auxiliary and retail operations | |
| 9.9% | 2,807,380 |
| Amortization of capital assets and reserves | |
| 100.0% | 28,399,790 |

Endowment at Havergal 2011-2012

The Havergal Endowment continues to be a fundraising priority for the school. With these gifts, Havergal is able to offer financial assistance to students, enhance curriculum, programs and facilities, provide professional development opportunities for our faculty and staff and support the initiatives of the Institute at Havergal. Through Endowment support, we are able to secure Havergal's financial future and continue to provide excellence in education.

| BALANCE AS AT JUNE 30 | | 2012 | 2011 | BALANCE AS AT JUNE 30 | | 2012 | 2011 |
|---|--|-----------|-----------|--|--|---------|---------|
| | | \$ | \$ | | | \$ | \$ |
| GENERAL ENDOWMENTS | | | | BURSARIES (cont.) | | | |
| General Endowment | | 1,929,342 | 2,072,126 | Dorothy Lancaster Bursary | | 91,658 | 99,058 |
| Class of 1955 Endowment | | 26,223 | 27,310 | The Jean Katherine Martin Lawrence 1951 Family Trust | | 99,593 | 104,416 |
| Class of 1974 Endowment | | 26,930 | 25,830 | The Elizabeth B. Lay Award & Bursary | | 50,755 | 49,034 |
| Class of 1978 Endowment | | 28,528 | 18,701 | Elizabeth Lee Bursary | | 53,315 | 57,777 |
| Class of 1981 Co-Curricular Fund | | 70,474 | 64,521 | Valerie Ward Lister 1954 Bursary & Prize | | 91,541 | 99,202 |
| Class of 1988 Endowment | | 25,867 | 27,469 | The Patricia Anne Bull Macdonnell 1944 Bursary | | 33,803 | 34,150 |
| Class of 1990 Endowment | | 25,714 | 26,446 | Manchee Family Fund | | 27,508 | 29,810 |
| Class of 2013 Endowment | | 39,169 | 36,100 | Beth Woodhouse McCleary 1934 Bursary | | 32,590 | 35,318 |
| The Haag McAlpine Family Endowment | | 38,852 | 42,103 | The Heather Menear Bursary | | 70,245 | 63,642 |
| The Sheryl & David Kerr Family Fund | | 49,996 | 10,652 | Old Girls' Bursary | | 273,719 | 295,240 |
| The Martha & Lindsay Pierce Endowment | | 50,476 | 54,700 | Elsa & Karina Owen Memorial Fund & Prize | | 24,474 | 26,521 |
| Property Enhancement Fund | | 54,238 | 47,643 | Dr. Janet K. Ross Bursary | | 92,988 | 100,770 |
| The Roger & May Lee Zhu Endowment | | 31,707 | 34,346 | Seafood/Stikeman Bursary | | 23,680 | 25,662 |
| BURSARIES | | | | Faculty & Staff Student Assistance Fund | | 57,436 | 56,523 |
| General Endowment for Student Assistance | | 430,999 | 353,206 | Catherine Steele Bursary & Prize | | 192,522 | 208,634 |
| Ann-Elise and Tim Beatty Bursary | | 104,024 | 112,407 | Frederick W. Thompson Family Bursary | | 617,858 | 833,775 |
| The Burgess Family Bursary | | 58,377 | 39,600 | Jennifer Thompson Family Bursary | | 58,530 | 62,234 |
| Chan Bursary | | 46,561 | 50,458 | Thomson Family Bursary | | 42,976 | 46,573 |
| Cheesbrough Family Bursary | | 60,889 | 65,984 | Reta Lila Howard Weston Bursary | | 482,924 | 523,339 |
| The Ciara Meneley 2018 Endowment | | 46,875 | 43,403 | Priscilla Winn Barlow Bursary | | 187,444 | 202,024 |
| Josephine Churchill Clark Bursary | | 135,805 | 147,170 | SCHOLARSHIPS | | | |
| Class of 1947 Bursary | | 96,090 | 100,672 | Robin Urquhart Beddis & Jean Macpherson Urquhart | | | |
| Class of 1950 Bursary | | 29,037 | 30,190 | Scholarship | | 24,632 | 13,836 |
| Class of 1953 Bursary | | 60,820 | 63,849 | R. Samuel McLaughlin Scholarship Fund | | 184,723 | 200,182 |
| Class of 1959 Bursary | | 48,720 | 49,140 | Quebec Scholarship | | 85,726 | 92,900 |
| Class of 1961 Bursary | | 27,743 | 24,444 | Frances Ridley House Entrance Scholarship | | 90,525 | 98,101 |
| Class of 1964 Bursary | | 27,414 | 28,684 | Marion D. Rooke 1928 Scholarship and Bursary | | 384,173 | 416,323 |
| Class of 1965/1966 Bursary | | 56,836 | 59,498 | Temerty Family Scholarships | | 227,210 | 164,344 |
| The Class of 1976 'Still in our Hearts' Bursary | | 26,872 | 28,196 | PROFESSIONAL DEVELOPMENT ENDOWMENTS | | | |
| Class of 1984 Bursary | | 35,369 | 37,247 | Denham/Marshall Professional Development Fund | | 93,924 | 101,784 |
| Class of 1985 Bursary | | 49,195 | 53,071 | The Havergal Chair of Learning and Teaching | | 57,836 | 62,676 |
| Class of 1986 Bursary | | 32,928 | 32,180 | Ho Family Faculty Development Fund | | 164,846 | 178,641 |
| Class of 2000 Bursary | | 43,623 | 47,246 | Professional Development Fund | | 45,983 | 45,259 |
| Class of 2001 Bursary | | 41,112 | 44,411 | CURRICULUM ENRICHMENT ENDOWMENTS | | | |
| Class of 2002 Bursary | | 45,795 | 48,511 | General Curriculum Enrichment Fund | | 326,080 | 303,538 |
| Class of 2003 Bursary | | 44,665 | 48,403 | Dr. Catherine Steele 1928 Archives Endowment | | 98,010 | 105,988 |
| Class of 2004 Bursary | | 53,370 | 57,809 | J.P. Bickell Foundation Endowment | | 25,077 | 27,175 |
| Class of 2005 Bursary | | 76,772 | 83,013 | Canterbury Chaplaincy Endowment Fund | | 780,866 | 734,930 |
| Class of 2009 Bursary | | 210,684 | 226,096 | Class of 1951 Endowment for Archives | | 49,039 | 51,385 |
| Class of 2010 Bursary | | 117,912 | 127,317 | Class of 1970 Endowment for the Arts | | 35,874 | 38,269 |
| Class of 2011 Bursary | | 125,790 | 133,236 | Class of 1972 Archives Endowment | | 34,896 | 31,869 |
| Sara 1996, Martha 1999, Ethel 2003 Cohen Family Bursary | | 91,362 | 99,008 | Class of 1996 Curriculum Enrichment Fund | | 40,404 | 43,529 |
| Barbara Jean Duff Cronyn 1940 Bursary | | 91,918 | 99,611 | Class of 1997 Science & Technology Fund | | 39,290 | 42,439 |
| Mary Dennys Bursary | | 215,524 | 226,030 | Class of 1998 Athletics Endowment | | 35,388 | 38,324 |
| Elisa Di Bartolomeo - Di Lorenzo Bursary | | 61,464 | 66,500 | Class of 2006 Endowment for Global Outreach | | 92,362 | 95,883 |
| The Dick/Stoate Family Bursary | | 30,890 | 20,399 | Class of 2007 Green School Fund | | 89,212 | 96,677 |
| Janette Doupe Bursary | | 25,458 | 27,588 | Class of 2008 Endowment for the Arts | | 117,422 | 126,057 |
| The Flatley Family Endowment | | 45,821 | 12,477 | Class of 2012 Endowment for the Arts | | 105,166 | 450 |
| Margaret Fortier Endowment | | 226,497 | 245,452 | | | | |
| The HCC Bursary | | 170,797 | 45,123 | | | | |
| The Candace Heyward Bursary | | 97,261 | 47,131 | | | | |
| The Gay Sellers Kroeger 1952 Bursary | | 48,571 | 48,617 | | | | |

DONATIONS IN ACTION

Student Assistance: Bursary support makes a Havergal education more accessible for qualified students who could not otherwise afford to attend or return to Havergal College.



Providing financial assistance to students in need ensures a diverse culture at Havergal. In 2011-2012, 45 students received financial assistance to attend Havergal.

| BALANCE AS AT JUNE 30 | 2012 | 2011 |
|-----------------------|------|------|
| | \$ | \$ |

CURRICULUM ENRICHMENT ENDOWMENTS (cont.)

| | | |
|--|---------|---------|
| Endowment Fund for Drama | 84,866 | 91,969 |
| The Grantier Family Fund for Climate Change Studies | 48,335 | 52,377 |
| The Hibben Family Fund for Business Leadership | 120,551 | 125,963 |
| Ho Family Curriculum Enrichment Fund | 164,867 | 178,664 |
| The Hurlow Family Drama Endowment | 85,168 | 92,295 |
| Koerner-Visual-Artist-in-Residence Fund | 44,169 | 47,866 |
| The Margaret Norrie McCain 1951 Endowment Fund for Community Service | 277,419 | 300,635 |
| The R. Samuel McLaughlin Science Endowment Fund | 729,503 | 790,553 |
| The Meek Family Endowment for Athletics | 48,335 | 52,381 |
| The Morell/Chow Family Fund for Emerging Technologies | 97,146 | 99,815 |
| Music Endowment Fund | 27,725 | 30,046 |
| The Park Family Endowment | 74,069 | 29,982 |
| The Jane Stodgell Memorial Endowment Fund | 67,850 | 61,934 |
| Technology Fund | 55,244 | 59,867 |
| Wendy Thompson 1967 Fund for Social Science | 46,580 | 50,478 |
| The Tory Family Athletic Endowment (Jennifer Tory, Lizzie & Alex Mingay) | 29,227 | 29,611 |
| Weisdorf Bell Family Endowment for Visual Arts | 28,380 | 30,755 |

INSTITUTE AT HAVERGAL

| | | |
|---|---------|---------|
| Class of 1983 Community Involvement Endowment | 32,648 | 32,522 |
| The Dr. Susan J. Ditchburn Fund for the Institute at Havergal | 150,718 | 160,410 |
| Jane Harkness Sendzimir 1942 Fund | 41,524 | 44,999 |

ENDOWED FUNDS UNDER \$25,000

| | | |
|-------------------------------------|--------|--------|
| Athletics Endowment Fund | 21,641 | 22,786 |
| Baldwin Bursary | 19,198 | 20,805 |
| The Caskey-Francis Family Endowment | 10,826 | 11,254 |
| Class of 1954 Endowment | 13,752 | 13,385 |
| Class of 1957 Endowment | 19,903 | 21,157 |
| Class of 1958 Endowment | 5,928 | 6,315 |
| Class of 1960 Endowment | 18,924 | 19,963 |
| Class of 1962 Endowment | 8,010 | 8,354 |
| Class of 1963 Endowment | 9,674 | 10,107 |
| Class of 1967 Endowment | 5,653 | 5,877 |
| Class of 1968 Endowment | 4,864 | 4,712 |
| Class of 1969 Endowment | 17,401 | 17,559 |
| Class of 1971 Endowment | 16,956 | 17,039 |
| Class of 1973 Endowment | 6,137 | 6,566 |
| Class of 1975 Endowment | 11,792 | 12,126 |
| Class of 1977 Endowment | 10,798 | 11,484 |
| Class of 1979 Endowment | 17,237 | 17,380 |
| Class of 1980 Endowment | 10,622 | 11,403 |
| Class of 1982 Endowment | 19,041 | 18,776 |
| Class of 1987 Endowment | 19,095 | 19,708 |
| Class of 1989 Endowment | 9,346 | 9,964 |
| Class of 1991 Endowment | 9,650 | 7,246 |
| Class of 1992 Endowment | 16,513 | 17,132 |
| Class of 1993 Endowment | 6,150 | 6,501 |
| Class of 1994 Endowment | 2,833 | 2,850 |
| Class of 1995 Endowment | 7,503 | 7,996 |

| BALANCE AS AT JUNE 30 | 2012 | 2011 |
|-----------------------|------|------|
| | \$ | \$ |

ENDOWED FUNDS UNDER \$25,000 (cont.)

| | | |
|--|--------|--------|
| Class of 1999 Endowment | 23,200 | 22,500 |
| Class of 2014 Endowment | 205 | - |
| Class of 2015 Endowment | 1,565 | 1,209 |
| Class of 2020 Endowment | 495 | - |
| Class of 2023 Endowment | 1,941 | 2,018 |
| The Cohen-Simmons Family Endowment for the Institute | 5,122 | - |
| The Crenian Family Endowment | 9,900 | - |
| The Dal Bello Family Endowment | 4,950 | - |
| The Daley Family Endowment | 1,739 | - |
| The Former Staff Student Assistance Fund | 2,846 | - |
| Franklin Bursary | 22,408 | 24,283 |
| The Havergal Boarding Scholarship | 11,747 | 7,425 |
| Havergal Hellenic Diaspora Endowment Fund | 3,519 | - |
| The Institute at Havergal Fund | 22,419 | 17,477 |
| Junior School Bursary | 2,174 | - |
| Ann Kerwin Bursary | 9,821 | 5,006 |
| The Leader-Lownds Scholarship | 14,731 | 15,682 |
| Learning at Havergal Endowment | 12,021 | - |
| James T.Y. Lieu Bursary | 20,464 | 22,177 |
| John W. McColl Bursary | 21,731 | 23,550 |
| The Meneguzzi Family Fund | 4,455 | - |
| The Brooke Caroline Mitchell 2021 Bursary | 1,909 | 479 |
| D. O'Dell Memorial Bursary & Prize for Grade 11 Math | 15,854 | 17,181 |
| Marianne Oundjian 1969 International Enrichment Fund | 5,050 | 990 |
| Constance Pudan Bursary | 19,636 | 20,953 |
| The Rutherford Patry Bursary | 5,048 | 5,468 |
| Helen Yvonne Soules Scholarship & Bursary | 12,775 | 13,844 |
| Leonard Sutcliffe Bursary | 6,971 | 7,555 |
| Jean Macpherson Urquhart 1945 Community Council Fund | 5,979 | 6,109 |
| The Mike & Annette White Fund for Financial Literacy | 4,950 | - |

AWARDS

| | | |
|---|--------|--------|
| The Louise Westren Alexander Award | 1,789 | 1,939 |
| The Mary Frances Arrigo Music Award | 23,816 | 25,159 |
| The Dorothy Bevan Prize | 1,915 | 1,964 |
| Class of 1937 Sally MacDonald Memorial Prize | 8,725 | 9,070 |
| Class of 1942 Memorial Fund Prize | 2,766 | 2,997 |
| Class of 1953 Prize | 3,635 | 3,779 |
| Class of 1956 Mary Dennys Prize | 4,982 | 5,179 |
| Class of 1994 Academic Improvement Award | 3,054 | 3,175 |
| The Marcelle DeFreitas Prize for Modern Languages | 629 | 410 |
| The Betty Dike Prize for History | 926 | 1,003 |
| The Millie Hunter Prize | 8,407 | 8,739 |
| The S.W. Karrys Family Award | 27,890 | 28,992 |
| Bets Kiddell Debating Prize | 3,738 | 3,886 |
| Elaine McGillivray Prize for French in Grade 10 | 316 | 343 |
| The Diana Aylwin Morrison 1945 Award for Musical Excellence | 24,721 | 26,790 |
| The Constance Pudan Book Prize | 1,817 | 1,969 |
| Dorothy Symons Scholarship/Prize in Canadian Studies | 8,939 | 9,292 |
| Laurene Watson Music Award | 1,457 | 1,514 |
| Isobel Althouse Wilkinson Mathematics & Science Prize | 4,538 | 4,717 |

14,456,318 14,671,972

Annual Giving: Havergal Circle Donors

The Havergal Circle honours members of the Havergal community who have cumulatively given \$25,000 or more to the school. All gifts, including annual, endowed, receipted gifts-in-kind and realized planned gifts contribute to the cumulative total. Thank you to the many donors of the Havergal Circle for their dedicated commitment and ongoing support of the school.



DONORS OF \$1,000,000 AND OVER

Margaret Norrie McCain 1951 &
G. Wallace McCain*
The R. Samuel McLaughlin Foundation
Louise & James C. Temerty

DONORS OF \$500,000 - \$999,999

Susan & Cecil Hawkins
Betty & Kwok Yuen Ho
Sonia Armstrong Labatt 1956 &
Arthur Labatt
Heather & Fraser D. Latta
The J.W. McConnell Family Foundation
Donna & Robert Poile
F.W. Thompson
The W. Garfield Weston Foundation
Anonymous (1)

DONORS OF \$100,000 - \$499,999

The E. W. Bickle Foundation
Cindy & Robert Blakely
Pamela Zakarow & George Buckles
Kerry & John Carmichael
Anne Carter 1960
The Cheesbrough Family
John C. Clark
Class of 1947
Class of 2006
Class of 2007
Class of 2008
Class of 2009
Class of 2010
Class of 2011
Class of 2012†
The Cloverleaf Foundation
Ricky & Peter Cohen
Earlaine Stewart Collins 1956
Barbara Duff Cronyn 1940*
& John B. Cronyn*
Linda & Peter Cullen
Julie Di Lorenzo 1982
The Eaton Foundation
Gloria & Seymour Epstein
Janet & Denis R. Evans
Margaret Fortier 1932*
Ronald P. Fournier
Karin & Michael Ginsberg
Havergal Community Committee
Havergal Old Girls Association
Alan R. Hibben
The Donald F. Hunter Charitable
Foundation
Julie & Gerald S. Hurlow
Rosamond Ivey 1974
Soon & Gary Lawrence†
Elizabeth & Jimmy Y. C. Lee
Julia MacBain
Michael MacBain
Laurie Stollery MacLachlan 1976 &
David B. MacLachlan
Phyllis Jardine Main 1948

Jill Denham & Stephen Marshall
Christine & Michael McCain
Lisa Mandel-McCann & Michael McCann
The McLean Foundation
The Miklas Family
Juliette Chow & Kenneth Morell
Julie Carmichael Norton & Brent Norton
Catherine & Bradley Nullmeyer
Jungmi Park
Margaret & Heinz Rieger
Marion Rooke 1928*
Lydia & Peter L. Sharpe
Nancy Sprout
Maria & Peter Stavropoulos
Catherine Steele 1928*
The Temerty Family Foundation
Dawn Wainwright Thompson 1937
Jennifer & Greg Thompson
Wendy Thompson 1967 & Samuel A. Rea*
Jennifer Tory 1974
Elizabeth & Bruce V. Walter
Dorothy Denison Ward 1931*
Patricia & Kim Ward
R. Howard Webster Foundation
Billie Bickle Wilder 1947
Anonymous (3)

DONORS OF \$25,000 - \$99,999

Nora McKay Adamson 1967 &
Peter Adamson
Jane & John B. Aird*
Lesley LeMesurier Alboini 1971 &
Victor Alboini
Gail & Mark Appel
Carolyn & Malcolm S. Archibald
Susan Orved Armitage 1961
Jennifer Ivey Bannock
Michael Bannock
Susan & Douglas G. Bassett
David S. Beatty*
Robin Urquhart Beddis 1968 &
Ian Beddis†
Kaye & Paul Beeston
J. P. Bickell Foundation
Laurel Brooks
Beth & Andrew Burgess
Brad Cameron
Carolyn & Robert J. Carew
Elizabeth Carr 1995†
Amy Lau & Michael Chan
Becky & Brett Channer
Ann & Robert Cheung
Rosemary & Chi C. Cheung
Class of 1950
Class of 1951
Class of 1952
Class of 1953
Class of 1955
Class of 1959
Class of 1961†
Class of 1964

Class of 1965
Class of 1966
Class of 1970
Class of 1972
Class of 1974
Class of 1976
Class of 1978†
Class of 1981
Class of 1983
Class of 1984
Class of 1985
Class of 1986
Class of 1988
Class of 1990
Class of 1996
Class of 1997
Class of 1998
Class of 2000
Class of 2001
Class of 2002
Class of 2003
Class of 2004
Class of 2005
Class of 2013
Christine Coutts Clement 1959
Diana & Nelson Clifford
Deborah Cumming 1973 &
Edward E. Anderson
Susan & Raymond G. Danniels
Mary Grace Denny 1940*
Janet Maclaren & Stephen Dent
Carol & Timothy B. Devlin
Lisa & Antonio Di Pede
Susan J. Ditchburn
Nicole & Thor Eaton
Márta Ecsedi 1972
Nancy & John P. Embry
Joni & Rui M. Fernandes
Ruth & Aidan Flatley
Susan Caskey & John Francis
Pinky & Robert Franklin
Heather & Michael Gardiner
Gordon Gates
Lorraine & Gordon Gibson
Susan Wright Gooderham 1974 &
Michael Gooderham
Betty Graham 1937*
Claudia & Sven Grail
Sharon & Bruce J. Grantier
Margaret & Peter Greenwood
Diana Porritt Greer 1953
Susan Wishart Grundy 1972 &
Douglas E. Grundy
Tracy & Robert C. Hain
Beverly Bruce Hargraff 1959
Gillian A. Hawker 1978 & Marty Perlmutter†
Joan Eakin & Christopher Hoffmann
Mary Ellen & Michael Horgan
Ruth & Alan D. Horn
Catherine & Michael G. Horrocks
Christina Fawcett & Michael Howlett

Helen Huff 1925*
Carla Small & Gary W. Huggins
Anna & Mansoor Husain
Eva & Calvin Jay
Elisabeth & John K. Johnson
The S. W. Karrys Family
Christine Harris-Kenalty &
Christopher Kenalty
Sheryl & David Kerr
Carole McNabb & Ian Kidson
Donna McRitchie & Shaf Keshavjee†
Elaine Chan-Ko & Simon Ko
The Koerner Foundation
Kitja & Colin Kong
Gundi Seifried & Steve Laciak
Mary Susanne Lamont 1964
Jane Langford 1988
Jessie & Paul Lawrence
Catherine Lawrence 1977 & Jerome Morse†
Elizabeth & David W. Lay
Jane & Michael Lay
John D. Leitch
Gillian & Michael Leverty
Michelle and Michael Levy Family
Foundation
Barbara Mitton & Donald Lewtas
Linda Leader Lownds 1967
Sharran Auclair Mabro 1966
Diana Miotto & John MacDonald
Marica Machat
Nancy & Ian MacKellar
Louise Park MacMillan 1972
Gail & John MacNaughton
Janet Currie MacPhail 1979
Elizabeth Barford Malcolm 1981†
The Manchee Foundation
Anna & Lidio Mancuso
Judith Taylor Mappin 1946
Janet Marsh Frosst
Norman Martin
Mary & John A. May
Jill McAlpine 1972 & John Haag
Lisa McAlpine 1979 & Ronald R. Schwass
Kathryn McCain 1969
Ismay McCarrick*
Beth Woodhouse McCleary 1934* &
James McCleary*
Linda & Duncan J. McEwan
Diane McLernon & L. Peter McLernon*
Joanne & John Mealia
Brenda* & Stanley Meek, Cairn Meek 1986
Michelle & Patrick Meneley
Nancy & Stephen Miao
Francis Carlisle Moran 1935
Lyane van Schaik-Munk & Dorian Munk
Nancy Riley & Blake Murray
Susan & Bryan Nelson
Maureen & Peter Oliver
Pamela & Desmond O'Rourke
Jennifer & Louis Pagnutti
Jennifer Parkin 1975 & David George

DONATIONS IN ACTION

Curriculum Enrichment: Havergal offers its students exposure to the latest curricular, technological, innovative and experiential learning methodologies.

In 2011-2012, annual gifts contributed to inviting 50 professionals to visit Havergal classrooms to share their knowledge in the fields of English, music, debate, athletics and finance.



Meg & Thomas Peddie
Francine & Roderick Pennycook
Robert Pierce
Amy & Edward Pong
Sabrina & Mel Poy
Linda & Bill Quinn
Perdita & Vivian S. Rambihar
Judy Ratcliffe 1952
Seok-Ping & Joseph Reis
Rose & Sam Reisman
Sue & Paul Riedlinger†
Carole & Paul Robertson
Brenda L. Robson
Mary & Michael Rolland
Janet Lang Ross 1931* & Murray G. Ross*
Diane Mavrinac-Ross & Jeffery Ross
Philippa Samworth 1970
Dolores & Wayne Saunders†
Meredith & Bill Sanderson
Susan & John Schumacher
Myroslava Romach & Edward Sellers
Jayne Harkness Sendzimir 1942
Jenny & Oscar Signoretti
Helen Sinclair 1969
Antoinette & Joseph Sorbara
Dearda Seaford Stikeman 1970 &
Robert Stikeman
Edwina Dick Stoate 1975
Jane Stodgell 1969* & Arnold Massey
Alicia Mulak & Michael Studer
Ana Lopes & Donald Tapscott
Ann & David J. Taylor
Heather & Richard M. Thomson
Marie-Yolande & J. Thomas Timmins
Evald Torokvei Foundation
Nancy & Robert Torokvei
Liz Tory & John A. Tory*
Andrea & Jack Tse
Diana Howe & Joseph Tse
Jean Macpherson Urquhart 1945*
Pamela Velos
Marianne & Wil Verheyen
Lorraine Bell & Mark Weisdorf
Ann-Margaret & Gordon Welton
Cynthia Thun Willauer 1958
Jilla & Robert C. Williams
Priscilla Winn Barlow
Jillian & Gordon Woolley
Mary Grace Rolph Wright 1944
Catherine Lau & Sek Yuen
Michele Johnson-Zentil & Garry Zentil*
May Lee & Roger Zhu
Anonymous (3)

**You made a
difference in
2011-2012!**
THANK YOU
**to all of
our donors.**

* Indicates Havergal Circle donors who are deceased

† Additions to the Havergal Circle in 2011-2012



Annual Giving

www.havergal.on.ca/support

Annual Giving: Ivy Society Donors

The Ivy Society honours donors who have made a gift to Havergal each year for 10 or more consecutive years. We thank you for your unwavering dedication and commitment to Havergal.



The Manchee Foundation 🌿
 The Temerty Family Foundation 🌿 +
 Margaret Abbott 1939 🌿
 Debbie Winspear Allan 1976 🌿
 Karen Jewett Allen 1983 and
 Timothy Allen 🌿
 Tula Boukydis Allison 1941 🌿
 Forbes and Roberta Andersen 🌿 +
 Lynne Archibald 1983 🌿
 Susan Ortvad Armitage 1961 🌿
 Anne Aitken Baker 1953 🌿
 Heather McPherson Ballon 1951 🌿 +
 Betty Jean Ingraham Bankes 1945 🌿 +
 Marcy Luba Barton 1988 and
 Robin Barton 🌿
 Amy Lawson Beament 1950 🌿 +
 Nancy Turville Bongard 1953 🌿
 Dora Boylen-Pabst 1992 🌿
 Merridy Cox Bradley 1966 🌿
 Marsha Davis Brooks 1960 and
 Barry Brooks 🌿
 Wendy Robinette Calder 1953 🌿
 Kathryn Caldwell 1978 🌿
 Jeannie Callum 1986 and John Risk 🌿
 Elizabeth Carr 1995 🌿
 Ann McKeough Carruthers 1942 🌿
 Anne Carter 1960 🌿
 Jerry and Cecilia Chan 🌿
 Grace and Patrick Chu 🌿
 Dino Clarizio and Carolyn J. Cooke 🌿 +
 Cathy Robinson Clark 1974 🌿
 Christine Coutts Clement 1959 🌿
 Margo Rudolf Coleman 1955 🌿
 Jill Bartlett Colley 1953 🌿 +
 Earlane Stewart Collins 1956 🌿 +
 Joanne Tolton Connolly 1954 🌿
 Jacqueline Cooper 1983 🌿
 Rosemary Corbett 🌿
 Jane Woodruff Corkery 1942 🌿
 Mary Ellis Cox 1936 🌿
 Christopher and Katherine Cummings 🌿
 Kathryn Chapman Curnow 1982 🌿
 Rachel DeBlois 1992 🌿 +
 Missy Hart DeGeer 1959 🌿
 Louise Sinclair Dennys 1954 🌿
 Jacqueline Johnson Desoer 1949 🌿
 Lynne Cowan Devine 1961 🌿
 Rosemary Elder Dick 1960 🌿
 Susan Ditchburn 🌿 +
 Jennifer Duchesne 🌿 +
 Betty Bunting Duffield 1953 🌿
 Ann Waddell Dunlop 1966 🌿
 Márta Ecsedi 1972 🌿
 Kelly and Corbet Elder 🌿
 Diane Drewry Elder 1955 and
 John Elder 🌿
 Frances Ruttan Emery 1958 🌿
 Barbara MacLaren Enright 1946 🌿
 Mary Clemes Ensor 1944 🌿
 Margaret Bettman Faath 1947 🌿

Ann Woodrooffe Ferguson 1965 🌿
 Rui and Joni Fernandes 🌿
 John and Ming Fraser 🌿
 Alexena Thun Frazee 1969 🌿
 Elizabeth Van de Mark Gallagher 1977 🌿 +
 Amy Gaskin 1986 and David Smith 🌿 +
 Pamela Mulqueen Gibson 1947 and
 Gordon Gibson 🌿
 Diana Jacob Goad 1947 and
 John Goad 🌿
 Elizabeth Hamilton Godard 1940 🌿
 Elizabeth Bleakney Gonnason 1937 🌿
 Susie Wright Gooderham 1974 and
 Michael Gooderham 🌿
 Joanne Hyde Gooding 1982 and
 Brian Gooding 🌿
 Colin and Sherrill Graham 🌿
 Phyllis and Joel Greenberg 🌿 +
 Diana Porritt Greer 1953 and
 Donald Greer 🌿
 Nicholas and Carol Gritis 🌿 +
 Jeffrey Grossman and Sylvia Apitz 🌿 +
 Shirley Moore Gunn 1947 🌿
 Catherine Paterson Gunn 1989 and
 Graeme Gunn 🌿 +
 Katherine Gurney 1990 🌿
 Irene Hain 1946 🌿
 Elizabeth Hall-Findlay 1968 🌿
 Lea Hansen 1971 🌿 +
 Beverly Bruce Hargraft 1959 🌿 +
 Mary Pratt Harlan 1959 🌿 +
 Sandra Hooper Heldman 1985 🌿
 Gail and James Herder 🌿
 Alan Hibben 🌿
 Joan de Burgh Hicks 1940 🌿
 Mary Hahn Hogarth 1949 🌿 +
 Virginia Chandler Houston 1942 🌿
 Millie Hunter 🌿 +
 Judith Cunningham Hunter 1951 🌿
 Gillian Duder Huntley 1969 🌿
 Gail Hutchison 1947 🌿 +
 Margie King Huycke 1948 🌿 +
 Horne Ing and Joan Jeu 🌿
 Roberta Innes 🌿 +
 Edie Carter Jewett 1952 🌿
 Celia Johnson 1991 🌿 +
 Elizabeth Scroggie Joy 1950 🌿
 Heather Fisher Kennedy 1976 🌿
 Maxine McKenzie Kenny 1947 🌿
 Mary Deacon Kent 1952 🌿
 Marilyn Ward King 1953 and Wally King 🌿
 Andrew Kingsmill and Leslie Forder 🌿
 Joan Griffith Kingstone 1945 🌿
 Sonia Armstrong Labatt 1956 and
 Arthur Labatt 🌿 +
 Dorothy Lancaster 🌿
 Elizabeth Lancaster 1981 🌿 +
 Jean Martin Lawrence 1951 and
 William Lawrence 🌿 +

Anne Lawrence Harrop 1983 and
 Bruce Harrop 🌿 +
 Christine Lay 1981 and
 Mary Mills LeRoy 1942 🌿
 Mary Crawford Lloyd 1951 🌿
 Penelope Lash Lorimer 1954 🌿
 Linda Leader Lownds 1967 🌿
 Vivien Ludlow 1965 🌿
 Janet Cox Lumbers 1962 🌿
 Margot Chapman Macdonnell 1984 🌿
 Ann Macdonald Macintosh 1949 🌿
 Jane Northey MacKinnon 1947 and
 Ronald MacKinnon 🌿
 Diane King MacNicol 1982 and
 David MacNicol 🌿
 Phyllis Jardine Main 1948 and
 George Main 🌿
 Jeanne Tate Manchee 1942 🌿
 Judith Cory Mangoff 1959 🌿 +
 Nena Sedgwick Marsden 1943 🌿
 Carole Dodwell Martyn 1952 🌿
 Elizabeth Mason 1945 🌿
 Carole Matear 1982 🌿
 Lisa McAlpine 1979 and
 Ronald Schwass 🌿 +
 Kathryn McCain 1969 and Jamie Pyper 🌿
 Elizabeth Richardson McCall 1985 and
 Andrew McCall 🌿
 Ann Griffin McCall 1960 🌿
 Nonie Sampson McClelland 1942 🌿
 Dinny McLaren McCraney 1965 and
 Robert McCraney 🌿
 Kari McCreath 1996 🌿 +
 Sally Bryden McCulloch 1954 🌿
 Dale McIntosh 1992 🌿 +
 Christie Cohrs McKechnie 1961 🌿
 Joan Rudolf McKinney 1952 and
 James Ian McKinney 🌿
 Mary Lou Garty McKinnon 1932 🌿
 Mary McPherson 1943 🌿
 Caleigh Pacini Meehan 2000 🌿
 Annette Buchman Mincer 1982 🌿 +
 Nicole Langley Mitescu 1968 and
 Catalin Mitescu 🌿
 Mitzi Montgomery 1950 🌿
 Patricia Montgomery 1947 🌿
 Frances Carlisle Moran 1935 🌿
 Mary Bennett Mordy 1946 🌿
 Barbara Trent Morris 1956 and
 Robert Morris 🌿 +
 Susan Small Morton 1959 🌿
 Jane Allport Mottershead 1960 🌿
 Mary Metcalf Muir 1981 🌿

Dorian Munk and
 Lyane van Schaik-Munk 🌿
 Linda Gutterson Munk 1956 🌿
 Anne Livingston Murray 1975 🌿
 Mary Davis Nelles 1962 and
 Cliff Nelles 🌿
 Susan Watson Nelson 1952 and
 Jeremy Nelson 🌿
 Anne Noble 1989 and Andrew McKee 🌿
 Allyson Whyte Nowak 1986 🌿 +
 Kitty O'Flynn 1983 🌿
 Joyce Stephens Oliphant 1939 🌿
 Marion McTaggart Oliver 1950 🌿
 Kathryn Rusz Ortner 1979 and
 Richard Ortner 🌿
 Katie Rennie Osler 1990 and
 Matthew Osler 🌿 +
 Marianne Oundjian 1969 🌿 +
 Margie Ryrice Pacini 1970 and
 Peter Pacini 🌿
 Jennifer Parkin 1975 and David George 🌿
 Sarah Sedgwick Parry 1979 and
 Mark Parry 🌿
 Isabel Brazill Paterson-Smyth 1952 🌿
 Carly Pepler 1953 🌿
 Betsy Bell Perkin 1961 🌿 +
 Eve Adams Pirrie 1944 🌿
 Mary Jean Borden Potter 1959 and
 Frank Potter 🌿
 Linda Probyn 1988 and
 James McCarvell 🌿 +
 Judith Floras Rance 1975 🌿
 Judy Ratcliffe 1952 🌿
 Joan Ballantyne Redfern 1947 🌿
 Flora Moffat Renaud 1942 🌿
 Bea Riddell 1945 🌿
 Pat Millidge Roberts 1948 🌿
 Barbara Robertson-Mann 1979 and
 David Mann 🌿 +
 Jane Robinson 1970 🌿
 Brenda Robson 🌿 +
 Claudia Rogers 🌿
 Elizabeth Burnett Rolston 1955 🌿
 Joan Kingsmill Roper 1960 and
 William Roper 🌿
 Jane Ross 1966 🌿
 Kathryn Ruhland 1988 🌿 +
 Barry and Eileen Russell 🌿
 Joan Robinette Sadleir 1949 🌿
 Naomi Sedgwick Schafler 1983
 and Michael Schafler 🌿
 Marcia Lamont Scott 1943 🌿
 Pat Eckardt Sedgwick 1952 🌿
 Norah Hillary Seguin 1979 🌿
 Stephen Shamie and Sheena MacAskill 🌿
 Adele Aziz Shamie 1949 and
 Norman Shamie 🌿
 Peggy Pepler Sharpe 1947 and
 C. Sharpe 🌿
 Jessie Taylor Shelley 1941 🌿

DONATIONS IN ACTION

Property Enhancement: Havergal strives to ensure the preservation of its heritage spaces and continues to develop a long-term sustainability plan.

Many of the historic stained-glass windows in the Brenda Robson Hall have been restored.

Mary Lou Sherman 1973 🏠 +
 Elizabeth Urquhart Shirriff 1943 🏠
 Charlene Smart Sibbit 1948 🏠
 Barbara Stanley Sinclair 1949 🏠
 Mary Thomas Singer 1942 🏠 +
 Susan Hamilton Sisam 1956 🏠
 Samuel and Ruby Siu 🏠
 Lillian Tang Smith 1988 and Jeffery Smith 🏠
 Anne Hamilton Smith 1955 and
 Gordon Smith 🏠
 Helen and Ronald Smith 🏠
 Doris Ellis Snook 1942 🏠
 Edwina Dick Stoate 1975 and Tim Stoate 🏠
 Roslyn Kaye Stollery 1966 🏠
 Fiona Strachan 1975 🏠
 Nicole Beckmann Swales 1987 🏠
 David and Ann Taylor 🏠
 Nancy White Thoman 1955 🏠
 Elda Phipps Thomas 1954 🏠
 Margaret Thompson 🏠
 Melinda Northway Thompson 1961 and
 John Thompson 🏠
 Janet Coutts Tieman 1954 🏠
 Kathleen Toguri 1964 🏠
 Ann McClelland Topp 1977 and
 Bruce Topp 🏠
 Jennifer Tory 1974 🏠 +
 Meghan Arthur Tupholme 1996 🏠
 Marcia Cox Vaughey 1962 and
 John Vaughey 🏠
 Sally Garratt Vernon 1952 🏠
 Madeleine Volak 🏠 +
 Anita Krische Von Graffen 1959 🏠
 Bruce and Elizabeth Walter 🏠 +
 Margot MacLaren Watt 1954 🏠
 Julia Stanley Weaver 1978 and Donald Weaver 🏠
 Shelagh Dunwoody Whitaker 1947 🏠
 Elizabeth White 1971 and Andrew Czernik 🏠
 Anna Whitley 1961 🏠 +
 Carroll Wistow Willer 1963 🏠
 Jilla and Robert Williams 🏠 +
 Jane Wilson 1971 🏠
 Gina Boukydis Wilson 1946 🏠 +
 Priscilla Winn Barlow 🏠
 Patricia Hamilton Winter 1959 🏠
 Albert Wong and Winnie Lee 🏠
 Polly Beck Wright 1960 🏠
 Gracie Rolph Wright 1944 🏠
 Janet Woolley Wright 1967 🏠
 Jenny Yip 1999 🏠 +
 Lyn Hamilton Zacher 1958 🏠 +
 Anonymous (2) 🏠

🏠 *Indicates consecutive donations over the last three fiscal years*

+ *Indicates an increase in gift amount over last fiscal*

Annual Giving: Ellen Knox Society

Named in honour of Havergal's First Principal, the Ellen Knox Society recognizes donors who have supported the school through a planned gift. We thank these donors for their vision and for the benefit that these legacy gifts will bring to future generations of Havergal students.

MEMBERS

At June 30, 2011

Frances Louise Westren
 Alexander 1922*
 Dinnie Hogarth Baker 1982
 Helen Warren Band 1907*
 Jean Gillespie Beatty 1930*
 Ann Elise Ross Beatty 1931*
 David S. Beatty (Tim)*
 Henry S. Beckwith*
 Caley Borden 2002
 Jennifer Crawford Borden 1951*
 Henry 'Mac' Borden
 Susan Dunster Borden 1965
 Kathleen Switzer Brook 1936*
 Earlane Stewart Collins 1956
 Ann Coombs 1964
 Jacqueline Cooper 1983
 Carol Ecclestone Cox 1918*
 Mary Ellis Cox 1936
 Susan Prettie Crerar 1958*
 Kathleen L. Crowther 1920*
 Deborah Cumming 1973
 Janet Mary Carrine Day 1958*
 Marcelle DeFreitas
 Phyllis Capstaff Dennen 1933*
 Mary Dennys 1940*
 Dorothy Vernon Despard Burch*
 Susan J. Ditchburn
 Patricia Ann Doolittle*
 Diane Drewry Elder 1955
 Márta Ecsedi 1972
 Elsie Sutcliffe Flavelle 1917*
 Margaret (Peg) Fortier 1932*
 June Biggar Furman 1950
 Anne Pollitt Armstrong
 Gibson 1966*
 Susie Wright Gooderham 1974
 Mary Gooch
 Betty Graham 1937*
 Barry Grant* &
 Gayle Robinson Grant 1965
 June Taylor Gregory 1947
 David Hargraft* & Beverly Bruce
 Hargraft 1959
 Louise Middleton Hawkins 1939*
 Winifred Medland Hawks 1941
 Edith Margaret Holmes*
 Mary Ellen, Michael, Helen 1992,
 Deirdre 1995 Horgan
 Margo Howard 1948
 Loyse Elliott Hueschen 1944*
 Helen M. Huff 1925*
 Isabel Justina Wells Huffman 1927*
 Heather Hutchinson 1986
 Faith Trumble Jones 1929*
 W.A. Kemp*
 Maxine McKenzie Kenny 1947
 Marion Gallie Key 1936*

Heather M. Kitchen 1971
 Ellen Knox*
 Elizabeth Joan Alley Lash
 des Tombe 1935*
 Mary Susanne Lamont 1964
 Cynthia Faith Harding Leeper 1963
 Reuben W. Leonard*
 Wilhelmina Aird Lewis 1917*
 Linda Leader Lownds 1967
 Deirdre Horgan MacLeod 1995
 Elspeth Hoyles Mainguy 1932*
 Anne Elizabeth Hoyles Mainguy*
 Ethel Constance Blake Marani 1915*
 Elizabeth Mason 1945
 Muriel Longwell Matson 1924*
 Margaret Norrie McCain 1951
 Ismay McCarrick*
 James McCleary*
 Beth Woodhouse McCleary 1934*
 Frances Bond McElroy 1954
 Claire English McKinnon 1938*
 Frances Carlisle Moran 1935
 Frances Fairhead Morton 1928*
 Alice May Muckle*
 Jodi Niblett 1978
 Honor G. Nivin 1963
 Elizabeth Harpham Orford 1941*
 Marianne Oundjian 1969
 Kathleen Settle Parker 1928*
 Carolyn Warren Pepler 1908*
 Kathleen Daly-Pepper 1919*
 Doris Strickland Porritt 1919*
 Mary Jean Borden Potter 1959
 Constance Pudan*
 Marlene Quinn
 Judy Ratcliffe 1952
 Ann Revell*
 Harold Albert D. Roberts*
 Brenda L. Robson
 Marion Davies Rooke 1928*
 Joan Kingsmill Roper 1960
 Murray G. Ross*
 Janet Lang Ross 1931*
 Ruth Burke Rumpel 1937*
 Mary Rusz 1976
 Mary Staunton Ryrrie 1928*
 Dorothy Louise Soole Scott 1928*
 Pat Eckardt Sedgwick 1952
 Edward M. Sellers
 Helen Delaney Servick 1992
 Joe & Mary Frances Sheehan &
 Jessica Sheehan 2001
 Mary Stanton Sheen 1924*
 Marjory Gertrude Dixon
 Shepherd 1944*
 Adelaide Helen Grant Sinclair 1917*
 Mary Hamilton Steacy 1944*
 Catherine Steele 1928*
 Jane Stodgell 1969*

Catherine Caldecott
 Sutherland 1923*
 Amanda Sutton Tarling 1982
 Jennifer & Greg Thompson
 Sam Rea* & Wendy Thompson 1967
 Sally Garratt Vernon 1952
 Dorothy Denison Ward 1931*
 Bessie Hamilton Warren 1918*
 Margaret B. Whiteman*
 Mary Boughner Williams 1920*
 Mary Gwendolen Williams 1911*
 Caird Wilson 1960*
 Jean Wylie Wishart 1920*
 Joyce Lownsbrough Woods 1930*
 Mary Grace Rolph Wright 1944
 Anonymous (6)

NEW MEMBERS

At June 30, 2012

John Stodgell*

* *Indicates EK Society donors who are deceased*



Planning for Havergal's Future

Marianne Oundjian 1969, a member of the Ellen Knox Society, has made provisions to support Havergal College with a planned gift. In addition to her bequest, Marianne recently established The Marianne Oundjian 1969 International Enrichment Fund in order to experience the growth and development of her endowment. Marianne's bequest ultimately will be added to her newly established endowment. This fund will provide financial assistance to one or more Havergal College students annually, so that they are able to participate in international excursions.

Throughout her lifetime, Marianne has travelled extensively and expressed an interest in wanting to share these opportunities and experiences with Havergal students. She believes it is important to broaden students' horizons at a young age to give them perspective beyond what they get at home.

International excursions can inspire new outlooks, new professional paths and new interests. As Marianne said: "You just never know where these experiences are going to lead, which is exciting."

Thank you, Marianne, for your generosity and thoughtfulness.

Annual Giving: The Class of 2012 Endowment for the Arts

In recent years, graduating class families have contributed a special gift to the school in honour of their daughters' graduation. Families of the 2012 graduating class established an endowment fund to support the arts at Havergal, including fine art, drama, music, dance and photography. A committee of parent volunteers and student representatives worked throughout the year to encourage support for the gift, with \$107,000 raised to establish this fund. Thank you to all of the students and families who so generously supported the Class of 2012 Endowment for the Arts.

Karen and Reza Abhari
Sara Abhari
Kate and Blair Agnew
Ailsa Agnew
Walid and Dilbeste Alameddine 🇸🇦 +
Yasmin Alameddine
Sabrina Apitz-Grossman
Carla and Antonio Azevedo 🇧🇷
Pam Beatson +
Natalie Biringner
Olivia Bochenek
Steven Bochenek and Lindsay Craik
Andrew and Ingrid Callum 🇺🇸 +
Smita and Kuntesh Chandaria 🇮🇳 +
Riya Chandaria
Jeffrey M. Chin and Lydia Hoh
Doris and Gary Chin
Sarah Chin
Katie Chin
Wally Chiu and Sarah Chow 🇮🇳 +
Grace and Patrick Chu +
Sonja Chu
Cara Cishecki
Dino Clarizio and Carolyn J. Cooke 🇺🇸 +
Nicole Clarizio
Peter and Julia DeGuerre
Maddie DeGuerre
David Denison and
Maureen Flanagan 🇺🇸 +
Tessa Denison
Lisa and Craig Ellis
Lauren Ellis
Akeesha Footman
Susan Freeman
Sarah Freeman
Lisa and Ted Gerstle
Katie Gerstle
Gurmit and Jasbir Ghoman
Simran Ghoman
Peter and Cindy Gladstone
Miriam Gladstone
Sarah Glickman
Larysa Gorlova and David Oliveira 🇧🇷
Mariya Gorlova
Jeffrey Grossman and Sylvia Apitz 🇺🇸 +
Alexandra Haber
Laura and Mike Harris 🇺🇸
Brenda Chartier and Frank Horemans
Eric and Gabrielle Hui 🇺🇸
Gladys Hui
Deborah Morrish and Thomas Jakobek
Nicole Jakobek
Julianne Jakobek
Zeljko and Mirjana Janjos +
Marija Janjos
Katherine and Daniel Jauernig
Nicole Jauernig
Kimberly Kawaja

Susan and Dan Kirkland
Sydney Kirkland
Nga Ko
Chitra Koneri +
Keith Kwok and Ida Poon
Tiffany Kwok
Kit Yee Louisa Chow and Kit Wing
Danny Lam
Barrie and Joan Laver 🇺🇸
Irene and Winston Law
Alysha Law
Les and Kathleen Lear
Katie Lear
Gladys Leung
Jonathan and Kate Lissus +
Madeline Lissus
Eric Luk and Sophia Lam
Nancy Macdonald Johnston
Joanna and David MacDougall 🇺🇸 +
Maddy MacDougall
Hayley Machat
Don and Sarah Macintosh
Emma Macintosh
Taylor Maguire
Samantha Mahfood
Christopher and Elizabeth
Matthews 🇺🇸 +
Jane and Paul McCabe
Shannon McCabe
Elizabeth Richardson McCall 1985 and
Andrew McCall +
Stephanie McCall
Alfio Meschino
Danielle Meschino
Charles and Gail Milgrom 🇺🇸 +
Michaela Milgrom
Michael Milosevic and
Eileen Fischer 🇺🇸
David Moritsugu and Monica Biringner
Ashok Mukherjee and
Sujana Vupputuri 🇮🇳
Kamila Mukherjee
Sharon Muzyk 🇺🇸
Hendra Nataprawira and
Vinsensia Gunadi
Edmee Nataprawira
Anne Nerby
Dean and Jodi Newman
Bradley and Catherine Nullmeyer 🇺🇸 +
Jocelyn Nullmeyer
Jungmi and Taemyung Park 🇺🇸 +
Elie Park 🇺🇸 +
Robert and Donna Poile +
Ellen Poile
Karen Malatest and Barry Reiter
Katherine Puskas
Paul and Sue Riedlinger 🇺🇸 +
Annie Riedlinger

Christopher Ronald
Caitlin Ronald
Donald and Laura Ross 🇺🇸 +
James and Lisa Ruscica
Catherine Ruscica
Alexander and Nancy Samarze 🇺🇸 +
Laura Samarze

Stephen Shamie and
Sheena MacAskill 🇺🇸
Parveen and Suman Sharma
Wendy Kramer-Silman and
Stephen Silman
Paul Smith and Julie LeBlanc
Ho Jun Song and Yong Suk La +
Helen Song
Helen and Mark Stone
Peter Strahlendorf and
Carole McKeogh
Steve and Lori Thomas
Lauren Thomas
Leslee Johnston Thompson 1979 and
Michael Thompson 🇺🇸
Charlotte Thompson
Kent Thomson and Shelly Allen 🇺🇸
Kelly Thomson
Wayne and Yolanda Townsend
Richard and Alison Turner
Sara Turner
Mary and Paul Vorvis
Elena Vorvis
John Walker and Barbara Smith
Katherine Walker
Mimi Wang
Gwynneth and Michael Webb
Emma Webb
Todd Wilcox and Susan Foster-Wilcox
Erika Wilcox
Vivian and Jeffrey Wong
Christine and Shenglin Xian
Rachel Xian
Cathy Liu and Li Yang
Annie Yang
John Zechner and Lynn Porter 🇺🇸 +
Katie Zechner
Michelle Zhao
Anonymous (6)

🇸🇦 Indicates consecutive donations over the last three fiscal years

+ Indicates an increase in gift amount over last fiscal

Annual Giving: Green & Gold Society

Members of the Green & Gold Society make leadership gifts of \$1,000 or more to the school in a fiscal year. The collective generosity of these donors offers Havergal a significant financial contribution and helps to inspire giving in others. Thank you to each member of the Green & Gold Society for your support.

GREEN & GOLD CHAMPION

Havergal Community Committee
Robin Urquhart Beddis 1968 and
Ian Beddis 🇺🇸
Sophia and Richard Crenian
John and Elisabeth Johnson 🇺🇸
Shaf Keshavjee and Donna McRitchie 🇺🇸 +
Susan Tompkins Lounsbury 1978
Phyllis Jardine Main 1948 and
George Main 🇺🇸
Pat and Michelle Meneley 🇺🇸 +
Bradley and Catherine Nullmeyer 🇺🇸 +
Sean and Julie Regan 🇺🇸 +
Edwina Dick Stoate 1975 and Tim Stoate 🇺🇸
John Stodgell*
Jilla and Robert Williams 🇺🇸 +
John Zechner and Lynn Porter 🇺🇸 +

GREEN & GOLD BENEFACTOR

The Ralph Barford Foundation 🇺🇸
Walid and Dilbeste Alameddine 🇺🇸 +
Juliette Chow and Kenneth Morell
Bryn Currie 🇺🇸 +
Greg David
David Denison and Maureen Flanagan 🇺🇸 +
Stephen Dent and Janet Maclaren 🇺🇸 +
Andrew and Janet Durnford 🇺🇸
Michele Farrugia 1986 and
David Dal Bello 🇺🇸
Barry and Wendy Gordon 🇺🇸 +
Jonathan and Nita Hunter 🇺🇸
Ann Kerwin 🇺🇸 +
Sujuin and James Kim
Christoph Kranemann and Dina de Jager
Louise Park MacMillan 1972 and
John MacMillan 🇺🇸 +
Beth Barford Malcolm 1981 🇺🇸 +
Carole McNabb and Ian Kidson
Michael and Loree Meneguzzi +
Frances Carlisle Moran 1935 🇺🇸
Nancy McCain and Bill Morneau 🇺🇸 +
Robbie Pryde 🇺🇸 +
Paul and Sue Riedlinger 🇺🇸 +
Bruce and Cynthia Robertson
Michael and Mary Rolland
Wayne and Dolores Saunders
Martha Cohen Simmons 1999 and
Teddy Simmons 🇺🇸 +
Kevin and Sandra Sullivan 🇺🇸 +
John and Claudine Vettese 🇺🇸
Annette and Michael White
Lindsay Whyte-Berry 1985 and
Michael Berry

GREEN & GOLD PATRON

UBS Securities Canada Inc.
1999 Jauernig Family Trust
Harvey Kalles Real Estate

The Manchee Foundation 🇺🇸
KIK Custom Products
BMO Nesbitt Burns Inc.
Karen and Reza Abhari
Forbes and Roberta Andersen 🇺🇸
Malcolm and Carolyn Archibald 🇺🇸 +
Susan Ortvad Armitage 1961 🇺🇸
Tania Au and Samuel Lam
Carla and Antonio Azevedo 🇺🇸
Courtney and Maxine Bailey
Dan and Kathryn Barclay
Paul and Kaye Beeston 🇺🇸
Nancy Tregunno Berkhout 1978 and
Edward Berkhout
Noah Blackstein and Wendy E. Geller
Michael Boyd and Shelagh Donovan
Kara Brodribb and Mark Caiger
Allan and Althea Buitendag 🇺🇸 +
John and Ambrosia Caplice 🇺🇸 +
Nick Cardinale and Gina Re-Cardinale 🇺🇸
Elizabeth Carr 1995 🇺🇸
James and Christine Cha
Lawrence Chan and Anh-Tam Truong 🇺🇸
Smita and Kuntesh Chandaria 🇺🇸 +
Brenda Chartier and Frank Horemans
Robert and Theresa Chen 🇺🇸
Hui Chen and Yi Lin
Jeffrey M. Chin and Lydia Hoh
Steven and Tae Hee Chin 🇺🇸
Doris and Gary Chin
Kit Yee Louisa Chow and
Kit Wing Danny Lam
Alex and Alison Chow 🇺🇸 +
Grace and Patrick Chu 🇺🇸
Dino Clarizio and Carolyn J. Cooke 🇺🇸 +
Cathy Robinson Clark 1974 🇺🇸 +
Christine Coumts Clement 1959 🇺🇸
Earlaine Stewart Collins 1956 🇺🇸 +
Sante and Joelle Corona 🇺🇸
Nicola Von Schroeter Craig 1984
Kevin and Debbie Crull
Sven and Mary Dean
Jill Denham and Stephen Marshall
Jeanne DesBrisay 1982 and
Donald Gilchrist 🇺🇸 +
Leslie Anne Dexter
Julie Di Lorenzo 1982 and Robert Graham +
Susan Ditchburn 🇺🇸 +
Sherry Taylor Drew 1963
Claire and Samuel Duboc
Mounir El-Ayari and Jane Shantz
Lisa and Craig Ellis
Derek Ferris and Heather Evans 🇺🇸
Laurie and Tim Foote 🇺🇸 +
Litsa and Peter Fountas
John Francis and Susan Caskey 🇺🇸 +
Patricia and Mark Fuller
Will Fung and Leslie Johnson 🇺🇸 +

Amy Gaskin 1986 and David Smith 🇺🇸 +
Lorraine and Gordon Gibson
Peter and Cindy Gladstone
David Gong and Stephanie Hua +
Susie Wright Gooderham 1974 and
Michael Gooderham 🇺🇸
Gordon and Celia Goodman 🇺🇸 +
Vivian and Robert Greenberg 🇺🇸
Diana Porritt Greer 1953 and
Donald Greer 🇺🇸
Nancy Griffin +
Susan and Mark Groesbeck 🇺🇸 +
Beverly Bruce Hargraff 1959 🇺🇸 +
Laura and Mike Harris 🇺🇸
Kelly and Prun Haskins
Sharon Haward-Laird and Steven Laird
Gillian Hawker 1978 and Marty Perlmutter
Louise Hawkins 1939*
David and Caroline Hay +
Laurie Hay and Doug Kellar
Margaret Herridge and Robert Stewart
Ali Heydary and Sharon Baghai
Alan Hibben 🇺🇸
Andre and Jocelyn Hidi 🇺🇸 +
Sandy and Scott Higgins
Christopher Jyu and Joy Ho
David and Maliwan Holgate
Bree Holt and Firas Askari
Jody and Jeff Howe 🇺🇸 +
Jackie Hung and Wai King Leong
Mary Sook Hwang
Samuel Ip and Kan Lee 🇺🇸 +
Katherine and Daniel Jauernig
Edie Carter Jewett 1952 🇺🇸
Celia Johnson 1991 🇺🇸 +
Evelyn Kai-Li and Francis Li
Michael and Dana Kalles 🇺🇸
Stratis and Janet Katsiris
Wendy Kei and Kevin Daley
Heather Fisher Kennedy 1976 🇺🇸
Iain and Lori Kennedy 🇺🇸 +
Grace and Richard Kim
Marilyn Ward King 1953 and
Wally King 🇺🇸
Elizabeth King 1983 and Eric Armour 🇺🇸 +
Susan and Dan Kirkland
Eileen and Michael Kong 🇺🇸
Sasa and Rosie Krcmar
Sonia Armstrong Labatt 1956 and
Arthur Labatt 🇺🇸 +
Jacquie Labatt 1980 and
Bruce Randle 🇺🇸 +
Barrie and Joan Laver 🇺🇸
Irene and Winston Law
Catherine Lawrence 1977 and
Jerome Morse 🇺🇸 +
Douglas and Christine Lawson 🇺🇸 +

Christine Lay 1981 and
Michael Farkouh 🇺🇸 +
David and Elizabeth Lay 🇺🇸
Randy Lenaghan and
Carolyn McCaughey 🇺🇸 +
Annie and Gang Li
Jonathan and Kate Lissus 🇺🇸
Stefano Lizzola and
Alanna Marshall Lizzola
Ron and Samantha Lloyd +
Dorothy Vernon Macdonald 1956
Cathy and Jamie Macdonald
Cameron and Denise MacDonald 🇺🇸 +
John A. MacDonald and Diana Miotto 🇺🇸
Margot Chapman Macdonnell 1984 🇺🇸
Joanna and David MacDougall 🇺🇸 +
Kyle and Jennifer MacGregor
Graeme MacGregor and Melanie Lauber 🇺🇸
Don and Sarah Macintosh
Richard and Karina Mak 🇺🇸
Chandika and Bhavi Mankanjee
Karen Malatest and Barry Reiter
Jeanne Tate Manchee 1942 🇺🇸
Anastasia and Ted Manziaris 🇺🇸 +
Judy Taylor Mappin 1946 🇺🇸
Robert Marshall 🇺🇸 +
Christopher and Elizabeth Matthews 🇺🇸 +
Lisa McAlpine 1979 and
Ronald Schwass 🇺🇸 +
Joyce Allan McAlpine 1965 and
James McAlpine
Eleanor McCain 🇺🇸 +
Kathryn McCain 1969 and Jamie Pyper 🇺🇸
Alison and J. McDonald
Eleanor McDonald 2002 +
James and Sylvia McGovern +
Rebekah Nugent McIntosh 1992
Glen McMillan and Roberta Minna 🇺🇸 +
Mary Helen and Mitesh Mehta
Laurie Ogilvie Melbourne 1990 and
Jason Melbourne 🇺🇸
Lea Aird Menear 1966 and William Menear
Alfio Meschino
Tracey and Gordon Miller 🇺🇸 +
Michael Milosevic and Eileen Fischer 🇺🇸
Andrew and Heather Mitchell +
Jim and Bessie Mitrakos 🇺🇸 +
Andrew and Margaret Moor
Lani Nugent Moses 1964 🇺🇸
Ashok Mukherjee and Sujana Vupputuri 🇺🇸
Dorian Munk and
Lyane van Schaik-Munk 🇺🇸
Frederick and Liza Murrell 🇺🇸 +
Dean and Jodi Newman
Jennifer Chubb Newton 1992 and
Michael Newton
Kay-Shun and Kimmy Ng 🇺🇸 +
Allyson Whyte Nowak 1986 🇺🇸 +



Giving Back to HC

“When each of our four daughters started at Havergal, it was the beginning of a chapter in their lives that has included making lifelong friendships, experiencing new ideas and taking part in activities aimed at enhancing their learning and intellect. We support Annual Giving at Havergal to show our appreciation to the school and its legacy. We are helping to provide new beginnings for future students.”

– Elizabeth and Bruce Walter, Havergal parents

“We knew that sending our girls to Havergal was one piece of their education; the other was their community. The best way to be educated about your community is to be involved—so we proudly support Havergal with both our time and our financial resources.”

– Lyane van Schaik-Munk and Dorian Munk, Havergal parents

“No matter the size of your contribution, I think it’s the consistent support—year after year—that’s most important. If everyone in the community, including parents, past parents and Old Girls, showed their support annually, the possibilities and opportunities for Havergal and for the girls would be tremendous.”

– Lillian Tang Smith 1988, Old Girl and Havergal parent

Annual Giving: Green & Gold Society

(cont.)

- Teresa O 1987
 Jo-Anne O’Connor and David Wood 🌳
 Peter Osborne and
 Christine Montgomery
 Katie Rennie Osler 1990 and
 Matthew Osler 🌳 +
 Marianne Oundjian 1969 🌳 +
 John and Catalina Pang
 Sarah Sedgwick Parry 1979 and
 Mark Parry 🌳
 David and Helen Peters 🌳
 Robert and Donna Poile +
 Bill and Linda Quinn 🌳
 Judy Ratcliffe 1952 🌳
 Tim and Gail Regan 🌳
 Hugh and Janice Rennie
 Boules Riad 🌳 +
 Sarah Richardson 1989
 Bea Riddell 1945 🌳
 Thomas and Wendy Rigby
 Meghan Robertson 1980 and
 Dirk Rueter 🌳 +
 Brenda Robson 🌳 +
 Frank Rondinone and Maria Panetta +
 Roger and Jane Rosmus 🌳 +
 Donald and Laura Ross 🌳 +
 Lois Rowe 🌳 +
 James and Lisa Ruscica
 David Safran and
 Catriona Ferguson 🌳 +
 Alexander and Nancy Samarze 🌳 +
 Roy and Anna Pia Scaini
 Stephen Shamie and
 Sheena MacAskill 🌳
 Daniel and Hollie Shapiro
 Parveen and Suman Sharma
 Dan and Christine Sharp
 Leslie and Stephen Sigurdson
 Peter and Carrie Simon 🌳
 Michael Simonetta and
 Lucia D’Angelo 🌳 +
 Helen Sinclair 1969 and
 Paul Cantor 🌳 +
 Katherine Ritcey Sisley 1987 and
 Hugh Sisley
 Samuel and Ruby Siu 🌳
 Paul Smith and Julie LeBlanc
 Ho Jun Song and Yong Suk La +
 Jonathan Soon-Shiong and
 Betsey Chung 🌳 +
 Robert and Renee Spiegel
 Julie Rennie Stanton 1987
 Kenneth Stein and Leslie Jones 🌳
 Tim and Carrie Stinson +
 Peter Strahlendorf and
 Carole McKeogh
 Kevin Sugden and Norah Farrell 🌳 +
 Dr. Jun Sun and Mrs. Ling Zhang 🌳
 Thecla Sweeney 1990 +
 Margaret and Michael Sweet
- Andrew and Nori Syriopoulos
 Sally Taylor 1961 🌳 +
 Steve and Lori Thomas
 Jennifer and Gregory Thompson
 Kent Thomson and Shelly Allen 🌳
 Gavin and Jacqueline Tighe
 Jennifer Tory 1974 🌳 +
 Charles and Laura Tucker
 Richard and Alison Turner
 Marcia Cox Vaughey 1962 and
 John Vaughey 🌳
 Elena and John Vella 🌳 +
 Denis and Cathy Veres
 Mary and Paul Vorvis
 Jeremy and Susan Walker
 Bruce and Elizabeth Walter 🌳 +
 Wei Wang and Bing Kang
 Evan Wayne and Risa Freeman
 Cheryl Wein and David Gratzner
 William White
 Brian and Mary Whitelaw
 Todd Wilcox and Susan Foster-Wilcox
 Sareena Ghulati Wildberger 1988 🌳 +
 Billie Bickle Wilder 1947 +
 Nicks Williams and
 Catherine Langdon 🌳 +
 Margot Potter Willoughby 1981 and
 Richard Willoughby +
 Priscilla Winn Barlow 🌳
 Vivian and Jeffrey Wong
 Albert Wong and Winnie Lee 🌳
 Gracie Rolph Wright 1944 🌳
 Christine and Shenglin Xian
 Shuyun and Xiaodong Xu
 Ya Lan and Yong Jun Yang
 Li Yang
 Louise Yearwood 🌳 +
 Jenny Yip 1999 🌳 +
 Eric Yu and Madeline Huang
 Jim Zhang and Yan Yan
 Hong Zhang and Jing Fan
 Roger and May Lee Zhu
 John and Jessica Zufferli 🌳
 Anonymous (4)

🌳 Indicates consecutive donations over the last three fiscal years

+ Indicates an increase in gift amount over last fiscal

* Indicates Green & Gold Society donors who are deceased

Annual Giving: Gifts from our Parent Community

We extend our sincere thanks to our parent donors who supported the Annual Giving program in the 2011-2012 fiscal year. These gifts support a culture of philanthropy at our school and we thank each family for their generosity and support.

DONATIONS IN ACTION

Professional Development: PD for faculty and staff creates a stimulating teaching and learning environment; students greatly benefit from the new learning that faculty bring to the classroom.



Faculty and staff participated in 180 professional development opportunities, including executive coaching and conferences.

GRADE 12

71% Participation

(Includes Grade Gift and others)

Karen and Reza Abhari
Kate and Blair Agnew
Walid and Dilbeste Alameddine ✨ +
Carla and Antonio Azevedo ✨
Pam Beatson +
David Moritsugu and Monica Biringner
Steven Bochenek and Lindsay Craik
Andrew and Ingrid Callum ✨ +
Smita and Kuntesh Chandaria ✨ +
Brenda Chartier and Frank Horemans
Jeffrey M. Chin and Lydia Hoh
Doris and Gary Chin
Wally Chiu and Sarah Chow ✨ +
Kit Yee Louisa Chow and
Kit Wing Danny Lam
Grace and Patrick Chu ✨
Dino Clarizio and Carolyn J. Cooke ✨ +
Peter and Julia DeGuerre
David Denison and Maureen Flanagan ✨ +
Lisa and Craig Ellis
Susan and Joseph Freeman
Lisa and Justin Gerstle
Gurmit and Jasbir Ghoman
Peter and Cindy Gladstone
Larysa Gorlova ✨
Jeffrey Grossman and Sylvia Apitz ✨ +
Laura and Mike Harris ✨
Jeffrey M. Chin and Lydia Hoh
Eric and Gabrielle Hui ✨
Zeljko and Mirjana Janjos +
Katherine and Daniel Jauernig
Susan and Dan Kirkland
Chitra Koneri +
Wendy Kramer-Silman and
Stephen Silman
Keith Kwok and Ida Poon
Barrie and Joan Laver ✨
Irene and Winston Law
Les and Kathleen Lear
Jonathan and Kate Lissus ✨
Eric Luk and Sophia Lam
Nancy Macdonald Johnston
Joanna and David MacDougall ✨ +
Don and Sarah Macintosh
Samantha Mahfood
Karen Malatest and Barry Reiter
Christopher and Elizabeth Matthews ✨ +
Jane and Paul McCabe
Elizabeth Richardson McCall 1985 and
Andrew McCall ✨
Anne McWatt and Paul Young
Alfio Meschino
Charles and Gail Milgrom ✨ +
Michael Milosevic and Eileen Fischer ✨
Ashok Mukherjee and Sujana Vupputuri ✨
Sharon Muzyk

Hendra Nataprawira and
Vinsensia Gunadi ✨
Dean and Jodi Newman
Bradley and Catherine Nullmeyer ✨ +
Jungmi and Taemyung Park ✨ +
Robert and Donna Poile +
Mande and William Puskas
Paul and Sue Riedlinger ✨ +
Christopher Ronald
Donald and Laura Ross ✨ +
James and Lisa Ruscica
Alexander and Nancy Samarze ✨ +
Stephen Shamie and Sheena MacAskil ✨
Parveen and Suman Sharma
Paul Smith and Julie LeBlanc
Barbara Smith and John Walker
Ho Jun Song and Yong Suk La +
Helen Stone
Peter Strahlendorf and Carole McKeogh
Steve and Lori Thomas
Leslee Johnston Thompson 1979 and
Michael Thompson ✨
Kent Thomson and Shelly Allen ✨
Wayne and Yolanda Townsend
Richard and Alison Turner
John and Barbara Walker
Gwynneth and Michael Webb
Todd Wilcox and Susan Foster-Wilcox
Vivian and Jeffrey Wong
Christine and Shenglin Xian
Li Yang
John Zechner and Lynn Porter ✨ +
Anonymous (2)

GRADE 11

45% Participation

Elizabeth King 1983 and Eric Armour
Alexander and Anna Barron ✨
Gary Bluestein +
Jeannie Callum 1986 and John Risk ✨
Luis Camhi and
Ingrid Aizenman de Camhi +
John and Ambrosia Caplice ✨ +
Jerry and Cecilia Chan ✨
Christopher and Katherine Cummings ✨
Kieron and Dee-Dee Dowling
Robert and Tania Ensor +
Derek Ferris and Heather Evans ✨
Alison Findlay
Don Findlay
Susan Guttman and John Harris
John Harris and Susan Guttman
David and Caroline Hay +
Jackie Hung and Wai King Leong
Mary Sook Hwang
Kris and Margaret Isberg ✨
David and Sue Jeon ✨
Carl Kalman and Nancy Crossley
Annie Katsiris ✨ +
Stratis and Janet Katsiris

Sujin and James Kim
Hyeung Yeul Kim and Kyeong Suk Choi ✨
Elizabeth King 1983 and Eric Armour ✨ +
Grace Lam and Winson Yeung ✨
Anne Lawrence Harrop 1983 and
Bruce Harrop ✨ +
Edmond and Annette Lee ✨ +
Kwok Ki Leung and Shirley Lau ✨
Marion Levi-Gotlieb and Leo Gotlieb
Ron and Samantha Lloyd +
June Low and Chieh Teng
John A. MacDonald and Diana Miotto ✨
Cathy and Jamie Macdonald
Jennifer and Conrad Mandala ✨ +
Andrew and Margaret Moor
Jo-Anne O'Connor and David Wood ✨
Mark Prosterman and Wendy Iseman
Bill and Linda Quinn ✨
Elizabeth Quintal-Harmantas and
Athanasios Harmantas
Jeannie Callum 1986 and John Risk
Meghan Robertson 1980 and
Dirk Rueter ✨ +
Jim Saloman and Laurie Beattie ✨ +
John and Christina Sanders +
Sindy and Ted Shetzen
Ruby Silvertown
Peter and Carrie Simon ✨
Winnie Situ and Mike Xie
Robert and Renee Spiegel
Joan and Michael Sweet
Margaret and Michael Sweet
Bruce and Elizabeth Walter ✨ +
Margot Potter Willoughby 1981 and
Richard Willoughby +
Scott Woroch and Marian Vobach ✨
Irene Yu and Paul Pu
Aihong Yuan ✨
Anonymous (1)

GRADE 10

47% Participation

Souren Agemian
Tania Au and Samuel Lam
Peter and Sisi Azzopardi ✨
Mary and Bruce Baccus
Courtney and Maxine Bailey
Steven Bochenek and Lindsay Craik
Nick Cardinale and Gina Re-Cardinale ✨
John Carnella and Mimi Joh ✨
Christopher and Lisa Caswell +
Mike Chen
Steven and Tae Hee Chin ✨
Doris and Gary Chin
Dino Clarizio and Carolyn J. Cooke ✨ +
Alison Coville +
Lucy Cummings and Scott Wilson
Kelly and Corbet Elder ✨
Robert and Madelyn Elia
Ronald and Anne Foerster ✨

John and Ming Fraser ✨
Joanne Hyde Gooding 1982 and
Brian Gooding ✨
Susan Guttman and John Harris
John Harris and Susan Guttman
Christopher Jyu and Joy Ho
Samuel Ip and Kan Lee ✨ +
Leslie Jones and Kenneth Stein
Evelyn Kai-Li and Francis Li
Jacquie Labatt 1980 and
Bruce Randle ✨ +
Douglas E. Lamb and Janet M. Purcell ✨
Paul Lan and Candice Kan
Barrie and Joan Laver ✨
Zi Feng Li and Hui Gao
Cameron and Denise MacDonald ✨ +
Joanna and David MacDougall ✨ +
Christopher and Elizabeth Matthews ✨ +
Elizabeth Richardson McCall 1985 and
Andrew McCall ✨
James and Sylvia McGovern +
Michael and Loree Meneguzzi +
Sheldon Miller and Venus Milo ✨ +
Alex and Remelyn Morrison ✨
Dorian Munk and
Lyane van Schaik-Munk ✨
Pravina and Bharat Nathoo
Kay-Shun and Kimmy Ng ✨
John and Catalina Pang
Janet Purcell and Douglas Lamb
Cornelia Radu
Peter Rhamey and Elizabeth Seger +
Leslie and Stephen Sigurdson
Kirste Spencer 1983 and Lawrence Archer +
Kenneth Stein and Leslie Jones ✨
Michael P. Studer and Alicia A. Mulak ✨
Joan and Michael Sweet
Andrew and Nori Syriopoulos
Gavin and Jacqueline Tighe
Charles and Laura Tucker
Albert Wong and Winnie Lee ✨
Jerry Xu and Tracy Yang +
Anonymous (1)

GRADE 9

56% Participation

Patricia Kaczanowski Kazan 1983 and
Brian Baigrie
Lisa Boxall Buchan 1985 and Sean Buchan
Beth and Andy Burgess
Luis Camhi and Ingrid Aizenman de Camhi +
John and Ambrosia Caplice ✨ +
Wilson and Bordeaux Chan ✨
Nancy Chen and Kevin Wu
Hui Chen and Yi Lin
C.F. and Lily Cheng
Juliette Chow and Kenneth Morell
David Cunningham
Jill Denham and Stephen Marshall
Stephen Dent and Janet Maclaren ✨ +

Annual Giving: Gifts from our Parent Community

(cont.)

Jeanne DesBrisay 1982 and Donald Gilchrist 🇨🇦 +
Claire and Samuel Duboc
John Francis and Susan Caskey 🇨🇦 +
Gordon and Celia Goodman 🇨🇦 +
Sharon Haward-Laird and Steven Laird
Laurie Hay and Doug Kellar
Margaret Herridge and Robert Stewart
Greg and Elizabeth-Anne Hersen
David and Maliwan Holgate
Colin Hui and Elizabeth Jones 🇨🇦 +
Julia Ind
Robert and Cecilia Inglis 🇨🇦 +
David and Sue Jeon 🇨🇦
Ahmed Jibril and Farrah Mohamed
Patti Kaczanowski Kazan 1983 and Brian Baigrie
Shaf Keshavjee and Donna McRitchie 🇨🇦 +
Andrew Kingsmill and Leslie Forder
John Laslavic and Suzi Vuksevic
Andy Leung and Irene Kwan
Simon and Clare Levy
Kim Lui and Magdalene Tang
Nancy Macdonald Johnston
Samantha Mahfood
Anastasia and Ted Manziaris 🇨🇦 +
Lisa McAlpine 1979 and Ronald Schwass 🇨🇦 +
Craig and Lynn McDougall
Glen McMillan and Roberta Minna 🇨🇦 +
Michael and Loree Meneguzzi +
Nancy McCain and Bill Morneau 🇨🇦 +
Stacey and Paul Mowbray
Frederick and Liza Murrell 🇨🇦 +
Elizabeth Quintal-Harmantas and Athanasios Harmantas
Rudolph and Maroussia Reid
Thomas and Wendy Rigby
Meghan Robertson 1980 and Dirk Rueter 🇨🇦 +
Christopher Ronald
Alexander and Nancy Samarze 🇨🇦 +
Roy and Anna Pia Scaini
Kirste Spencer 1983 and Lawrence Archer +
Wayne and Yolanda Townsend
Greg and Joanne Treffry 🇨🇦 +
Charles and Laura Tucker
Richard and Alison Turner
Wei Wang and Bing Kang
Brian and Mary Whitelaw
Lindsay Whyte-Berry 1985 and Michael Berry
Christine and Shenglin Xian
Shuyun and Xiaodong Xu
Ya Lan and Yong Jun Yang
Roger and May Lee Zhu
Anonymous (2)

GRADE 8

51% Participation

David and Jody Abbott
Trevor Zigelstein and Maria Amati
Peter and Barbara Angelou 🇨🇦
Sandy Bowers and Richard Gillard

Susan Cantlie and Jeffrey MacIntosh
Catherine Caven Ortvod
Dino Clarizio and Carolyn J. Cooke 🇨🇦 +
Robert and Pinar Crombie +
Lucy Cummings and Scott Wilson
Bryn Currie 🇨🇦 +
Elizabeth de Jong 🇨🇦 +
Jennifer Derbyshire and Doug Tkachuk
Lori and Michael Fisher
John Francis and Susan Caskey 🇨🇦 +
Will Fung and Leslie Johnson 🇨🇦 +
Laurens and Willa Gerlings
Nicholas and Carol Gritis 🇨🇦 +
Karen Hannaford +
Carl Kalman and Nancy Crossley
Iain and Lori Kennedy 🇨🇦 +
Regine and Alex Kuperman
Annie and Gang Li
Maureen MacDonald and Robert Leon
Martha Goad McFarlane 1981 and Robert McFarlane 🇨🇦
Carole McNabb and Ian Kidson
Dorian Munk and Lyane van Schaik-Munk 🇨🇦
Peter Nowlan and Jackie Ferris +
Bradley and Catherine Nullmeyer 🇨🇦 +
Peter Osborne and Christine Montgomery
Jun Pan
Errol Paulicpulle and Janine Sheeres
Frank Rondinone and Maria Panetta +
Naomi Sedgwick Schaffler 1983 and Michael Schaffler 🇨🇦
Tim and Carrie Stinson +
Kevin Sugden and Norah Farrell 🇨🇦 +
Kevin and Sandra Sullivan 🇨🇦 +
Christopher Anderson and Shelley Sunohara
Cindy and James Tam
Alexandra Warly 1983 and Kevin Derbyshire 🇨🇦 +
Jerry Xu and Tracy Yang +
Peter Zaltz and Renat Reubeni-Zaltz

GRADE 7

65% Participation

Dan and Kathryn Barclay
Bill Bateman and Renee A. Pilote 🇨🇦 +
Ildie and Dario Battista
Trevor Blakely and Scottie Wildman
Pam Zakarow and George Buckles
Nick Cardinale and Gina Re-Cardinale 🇨🇦
Michael Cheung and Michelle Chan 🇨🇦 +
Meg Connell and Kevin French
Chris and Alison Connolly
Sante and Joelle Corona 🇨🇦
Kevin and Debbie Crull
Jeanne DesBrisay 1982 and Donald Gilchrist 🇨🇦 +
John C. Douglas and Sandra Dowling 🇨🇦
Sandra Dowling and John Douglas
Robin Dunbar 🇨🇦 +
Ken Ellis and Heather Tulk
Patricia and Mark Fuller
Vivien and Ren Fu Wang
Lorraine and Gordon Gibson

Nanda Gopinath and Mary Thomas 🇨🇦
Cheri Grogan 1985
Gavin Higgs and Christine Morin-Higgs
Jody and Jeff Howe 🇨🇦 +
Jonathan and Nita Hunter 🇨🇦
Stratis and Janet Katsiris
Sasa and Rosie Krcmar
Philip Kung and Kar Hing Kung
Christine Lay 1981 and Michael Farkouh 🇨🇦 +
Karen Mackasey and Ron Uba
Anastasia and Ted Manziaris 🇨🇦 +
Alison and J. McDonald
Glenn and Janet McQueenie
Nancy McCain and Bill Morneau 🇨🇦 +
Ashok Mukherjee and Sujana Vupputuri 🇨🇦
Kathryn Rusz Ortner 1979 and Richard Ortner 🇨🇦
Ahmet and Figen Ozsan
Andrew and Denise Pilkington
Jelena and Miodrag Popovic
Brent and Sue Poulton 🇨🇦
Joe Rago and Lesa Aman-Rago 🇨🇦
Peter Rhomey and Elizabeth Seger +
Bruce and Cynthia Robertson
Karl Seger and Toni Hickox-Seger
Dan and Christine Sharp
Lillian Tang Smith 1988 and Jeffery Smith 🇨🇦
Barbara Smith and John Walker
Susan Carter Smith 1984 and Jeff Smith
Joan Evans Stock 1980 and Ian Stock 🇨🇦
Heather Tulk and Ken Ellis
Denis and Cathy Veres
Katherine Walker
John and Barbara Walker
Dianne and Michelle White
Nicks Williams and Catherine Langdon 🇨🇦 +
Albert Wong and Winnie Lee 🇨🇦
Sophia Le and Roger Xu
Jonathan and Daisy Yung
Hong Zhang and Jing Fan
Meilan Zheng and Liming Lin

GRADE 6

77% Participation

Peter and Barbara Angelou 🇨🇦
Dany and Lisa Assaf +
John and Ambrosia Caplice 🇨🇦 +
Lawrence Chan and Anh-Tam Truong 🇨🇦
Alex and Alison Chow 🇨🇦 +
Edward and Clara Chow
Alistair Corbett and Caroline Plumley
Corbett
Sophia and Richard Crenian
Christopher and Katherine Cummings 🇨🇦
Jennifer Dolman 1984 and Paul Lechtzger
David and Jennifer Farkouh 🇨🇦
Michael and Dana Kalles 🇨🇦
Vivian Ke and Homer Tien
Patricia Lim and Raymond Leung
Graeme MacGregor and Melanie Lauber 🇨🇦
Jean-Marc and Aviva MacKenzie
Silvio Marrone and Mina Sinopoli

Michael and Loree Meneguzzi +
Pat and Michelle Meneley 🇨🇦 +
Tara O'Brien and John Marley
Katie Rennie Osler 1990 and Matthew Osler 🇨🇦 +
Vikram and Julie Rao
Boules Riad 🇨🇦 +
Peter Rozenberg and Mary Ashkar 🇨🇦
Daniel and Hollie Shapiro
Glenn Shyba and Sylvia Baumann 🇨🇦
Greg and Evonne Tanzola 🇨🇦 +
Clement Tse and Maria Suen 🇨🇦
Nicolaas and Sashika Verhoeff 🇨🇦
John and Claudine Vettese 🇨🇦
Mary McDerment Wellner 1984 and Thomas Wellner
Lindsay Whyte-Berry 1985 and Michael Berry
Rick Wong and Anna Fong 🇨🇦 +
Anonymous (1)

GRADE 5

63% Participation

Jenny and Tim Andison
Christopher Blackwell and Sherrie Berdusco
Christopher and Lisa Caswell +
Cindy Chan and Wayne Ho Ping Kong
Robert and Theresa Chen 🇨🇦
Jennifer Derbyshire and Doug Tkachuk
Jeanne DesBrisay 1982 and Donald Gilchrist 🇨🇦 +
Andrew and Janet Durnford 🇨🇦
Lorraine and Gordon Gibson
Barry and Wendy Gordon 🇨🇦 +
Bridget and Darcy Hall
Douglas Harris and Michelle McClinton 🇨🇦
Michael and Dana Kalles 🇨🇦
Eileen and Michael Kong 🇨🇦
Thomas and Nikita Lee 🇨🇦 +
Denise and Phillip Nadalini 🇨🇦
David and Helen Peters 🇨🇦
Max and Nataly Podrez 🇨🇦
Laura Pryde 🇨🇦 +
Robbie Pryde 🇨🇦 +
Joe and Luciana Quarin
Fahimeh and Guy Raspanti
Yvonne Healy Robertson 1988 and Jason Robertson
Shirin Roustaei and Mehrdad Seyedmakki
Rowan and Susan Saunders
Dan and Christine Sharp
Lin and Joseph Tam
Noreen and Ian Williams
Eric Yu and Madeline Huang
Gillian and Mark Ziedenberg 🇨🇦

GRADE 4

85% Participation

Peter Aceto and Sylvia Sutej
Ildie and Dario Battista
Allan and Althea Buitendag 🇨🇦 +
Melissa Tabacoff Cavelti 1990 and John Stout
Lawrence Chan and Anh-Tam Truong 🇨🇦



The HCC Bursary

For many years the parent committee at Havergal, known as the Havergal Community Committee (HCC), has contributed generously to the well-being of Havergal College. Made up of a group of dedicated and committed parents, the HCC works tirelessly to support a variety of important initiatives at the school including Celebration Saturday, the Green & Gold Shop, the Father Daughter Dance and Birthday Books, to name a few. Each year, the HCC contributes to the school's "Wish List" by providing funding from a variety of HCC-run initiatives toward items needed in the school.

With funds generated from the Havergal Golf Tournament (which began in the 2008-2009 school year), the HCC established "The HCC Bursary," an endowed fund that provides funding for mission-appropriate students who would otherwise be unable to attend Havergal. Since that time, three successful golf tournaments, as well as other HCC initiatives, have raised more than \$170,000.

Greg David
 Stephen Dent and Janet Maclaren ☞ +
 John C. Douglas and Sandra Dowling ☞
 David and Jennifer Farkouh ☞
 Pauline and Ron Ferguson
 Amy Gaskin 1986 and David Smith ☞ +
 David Gong and Stephanie Hua +
 Nanda Gopinath and Mary Thomas ☞
 Vivian and Robert Greenberg ☞
 Stephen W. Hwang and
 Angela M. Cheung ☞
 Vivian Ke and Homer Tien
 Sasa and Rosie Krcmar
 Randy Lenaghan and
 Carolyn McCaughey ☞ +
 Carol and Jianwei Liu
 Richard and Karina Mak ☞
 Eleanor McCain ☞ +
 Mary Helen and Mitesh Mehta
 Boris Muchalov and
 Christina Rorai-Muchalov
 Frederick and Liza Murrell ☞ +
 Tara O'Brien and John Marley
 Boules Riad ☞ +
 Peter and Natasha Rockandel +
 Roger and Jane Rosmus ☞ +
 Peter Rozenberg and Mary Ashkar ☞
 Eric and Kumari Sade
 Peter and Carrie Simon ☞
 Michael Simonetta and
 Lucia D'Angelo ☞ +
 Peter and Maria Stavropoulos ☞ +
 Vincent Thien and Grace Kim ☞ +
 Elena and John Vella ☞ +
 Annette and Michael White
 Rick Wong and Anna Fong ☞ +
 Eric Yu and Madeline Huang
 Anonymous (1)

GRADE 3

78% Participation

Jenny and Tim Andison
 Karen Beatty 1983 and
 Robert Graham ☞ +
 Christopher Blackwell and
 Sherrie Berdusco
 Tina and Greg Borschel ☞ +
 Glen and Michele Daniel
 Laurie and Tim Foote ☞ +
 Bridget and Darcy Hall
 Douglas Harris and Michelle McClinton ☞
 Alan and Alexandra Hodgson
 Maggie Houston-White and
 Christopher White ☞ +
 Marie-France Jobin-You and John You
 Michael and Dana Kalles ☞
 Kristy McCurdy and Michael Franks
 Tracey and Gordon Miller ☞ +
 Andrew and Heather Mitchell +
 Julie and Edward O'Rorke ☞ +
 Carlo and Maria Perri ☞ +
 Linda Probyn 1988 and
 James McCarvell ☞ +
 Sean and Julie Regan ☞ +
 Roger and Jane Rosmus ☞ +

Lillian Tang Smith 1988 and
 Jeffery Smith ☞
 Allison Smith and Randall Munger
 Dr. Jun Sun and Mrs. Ling Zhang ☞
 Lin and Joseph Tam
 Annette and Michael White
 Anonymous (1)

GRADE 2

69% Participation

Lindsay Thompson Black 1990 and
 Dean Black
 Noah Blackstein and Wendy E. Geller
 Jeffrey and Tara Borg
 Melissa Tabacoff Cavelti 1990 and
 John Stout
 Julie Di Lorenzo 1982 and Robert Graham +
 Michele Farrugia 1986 and
 David Dal Bello ☞
 Pauline and Ron Ferguson
 Amy Gaskin 1986 and David Smith ☞ +
 Sandy and Scott Higgins
 Anne O'Rorke Hughes 1990 and
 Robert Hughes
 Jonathan and Nita Hunter ☞
 Grace and Richard Kim
 Kyle and Jennifer MacGregor
 Gurpreet and Paul Mand
 Laurie Ogilvie Melbourne 1990 and
 Jason Melbourne ☞ +
 Jim and Bessie Mitrakos ☞ +
 Denise and Phillip Nadalini ☞
 Julie and Edward O'Rorke ☞
 Dennis and Nicole Polygenis
 Jonathan Soon-Shiong and
 Betsey Chung ☞ +
 Peter and Maria Stavropoulos ☞ +
 John and Jessica Zufferli

GRADE 1

88% Participation

Jenny and Tim Andison
 Michael Book and Catherine Roche
 Sven and Mary Dean
 Carl J. DeLuca and Dana C. Jerome
 Mounir El-Ayari and Jane Shantz
 Michele Farrugia 1986 and
 David Dal Bello ☞
 Catriona Ferguson and David Safran
 David Gratzner and Cheryl Wein ☞
 Tony Griffin and Andrea Sobotik
 Kelly and Prun Haskins
 Alan and Alexandra Hodgson
 Bree Holt and Firas Askari
 John and Ruth Ley
 Stefano Lizzola and Alanna
 Marshall Lizzola
 Richard and Karina Mak ☞
 Tracey and Gordon Miller ☞ +
 Jennifer Chubb Newton 1992 and
 Michael Newton
 Anne Noble 1989 and Andrew McKee ☞
 Eden Oliver 1978 and H. Scott Fairley ☞ +
 Carlo and Maria Perri ☞ +
 Bruce and Cynthia Robertson

David Safran and Catriona Ferguson ☞ +
 Evan Wayne and Risa Freeman
 Cheryl Wein and David Gratzner
 Mary-Kathleen Delicaet Young 1985 and
 John Young
 Jim Zhang and Yan Yan
 Anonymous (1)

SENIOR KINDERGARTEN

72% Participation

Kara Brodribb and Mark Caiger
 John and Erin Carrique
 Geoff and Andrea Cohen
 David Gong and Stephanie Hua +
 Jeffrey Grossman and Sylvia Apitz ☞ +
 Ali Heydary and Sharon Baghai
 Vivian Ke and Homer Tien
 Kyle and Jennifer MacGregor
 Kristy McCurdy and Michael Franks
 Martha Cohen Simmons 1999 and
 Teddy Simmons ☞ +
 Colin and Debbie Simpson
 Greg and Nicole Southam
 Greg and Evonne Tanzola ☞ +

JUNIOR KINDERGARTEN

100% Participation

James and Christine Cha
 Sara Cohen-Gelfand 1996 and
 Michael Gelfand ☞
 David Gratzner and Cheryl Wein ☞
 Bree Holt and Firas Askari
 Wendy Ke and Kevin Daley
 Christoph Kranemann and Dina de Jager
 Laurie Ogilvie Melbourne 1990 and
 Jason Melbourne ☞
 Chris and Heather Partridge
 Zul and Reshma Rahim
 Katherine Ritcey Sisley 1987 and
 Hugh Sisley
 Jonathan Soon-Shiong and
 Betsey Chung ☞ +
 James and Sheree Stuart
 Mehmet Topaloglu and
 Yasemin Zeybek Topaloglu
 Cheryl Wein and David Gratzner

☞ Indicates consecutive donations
 over the last three fiscal years

+ Indicates an increase in gift
 amount over last fiscal

Annual Giving: Gifts from our Old Girls Community

For generations, Old Girls have provided financial support to Havergal, particularly through endowment giving. Thank you to the more than 520 Old Girls who are lighting the way for the generations to come by contributing to Annual Giving in 2011-2012.

CLASS OF 1932

50% Participation

Mary Lou Garty McKinnon

CLASS OF 1935

25% Participation

Frances Carlisle Moran

CLASS OF 1936

20% Participation

Mary Ellis Cox

CLASS OF 1937

27% Participation

Elizabeth Bleakney Gonnason
Dawn Wainwright Thompson
Marion Richards Wise

CLASS OF 1939

18% Participation

Margaret Abbott
Louise Hawkins*
Joyce Stephens Oliphant

CLASS OF 1940

23% Participation

Elizabeth Hamilton Godard
Joan de Burgh Hicks
Hope Seale Thompson

CLASS OF 1941

20% Participation

Tula Boukydis Allison
Winifred Medland Hawks
Nancy Foreman McKinney
Jessie Taylor Shelley
Dode Tudhope Spencer

CLASS OF 1942

38% Participation

Ann McKeough Carruthers
Jane Woodruff Corkery
June Dow Histrop
Virginia Chandler Houston
Mary Mills LeRoy
Jeanne Tate Manchee
Nonie Sampson McClelland
Margaret McFarlane Pumple
Flora Moffat Renaud
Mary Thomas Singer +
Doris Ellis Snook
Jean Fox Stirling

CLASS OF 1943

29% Participation

Nena Sedgwick Marsden
Wendy Heaton McLean
Mary McPherson
Ann O'Brian*

Margaret McKee Pattison

Marcia Lamont Scott
Elizabeth Urquhart Shirriff

CLASS OF 1944

19% Participation

Mary Clemes Ensor
Patricia Hunt Hemmerick
Jocelyn Davis Lazier
Eve Adams Pirrie
Gracie Rolph Wright

CLASS OF 1945

17% Participation

Betty Jean Ingraham Bankes +
Lois DeVal*
Joan Griffith Kingstone
Donny Campbell Kirby +
Elizabeth Mason
Bea Riddell

CLASS OF 1946

31% Participation

Barbara MacLaren Enright
Shirley Frey Feeley
Charlotte Keens Graham
Irene Hain
Elizabeth Ketchum
Margaret Haultain Littlejohn
Virginia Robertson Macdonald
Jane Carter MacDonald
Judy Taylor Mappin
Mary Bennett Mordy
Joyce Rous Sowby
Gina Boukydis Wilson +

CLASS OF 1947

40% Participation

Zaira Murray Aspinall +
Joan Burry Brown +
Barbara Treloar Cribb
Daphne Fisher Currie
Margaret Bettman Faath
Marilyn Potter Fenwick
Pamela Mulqueen Gibson
Diana Jacob Goad
Shirley Moore Gunn
Gail Hutchison +
Pat Hamilton Ingraham
Maxine McKenzie Kenny
Helen Forwood Lloyd
Jane Northey MacKinnon
Patricia Montgomery
Joan Ballantyne Redfern
Peggy Pepler Sharpe
Beverly Brockett West
Kathleen Taylor Whatmough
Shelagh Dunwoody Whitaker

CLASS OF 1948

25% Participation

Diana Fishleigh Eaton
Kittie-Marie McPhedran Fells
Alison Farmer Gibson
Margo Van Gelder Howard
Margie King Huycke +
Phyllis Jardine Main
Pat Millidge Roberts
Charlene Smart Sibbit
Diana Cook Wurtzburg

CLASS OF 1949

19% Participation

Joan Stewart Cook
Jacqueline Johnson Desoer
Mary Hahn Hogarth +
Ann Macdonald Macintosh
Anne Finch McDougall
Joan Robinette Sadleir
Adele Aziz Shamie
Barbara Stanley Sinclair
Leta Karrys Stathacos

CLASS OF 1950

26% Participation

Gloria Ackerman
Amy Lawson Beament +
Joanna Millar Dwinell
Margaret Anne Willis Gray
Colleen Henry Howard
Jane Beatty Hunter
Elizabeth Scroggie Joy
Deanne Conacher Leuty +
Margot Findlay Maedel
Diana Durand McLeod
Mitizi Montgomery
Marion McTaggart Oliver
Sheila Kent Shaw
Mary Ann Turville Simpson

CLASS OF 1951

28% Participation

Heather McPherson Ballon +
Ellen Woodbridge Bowden
Joan Kalthoff Burt
Mary Uren Dame
Jane Lamport Day
Isabelle Cox English
Anne Mackersy Hull
Judith Cunningham Hunter
Elizabeth Shaver Kimber
Jean Martin Lawrence +
Mary Crawford Lloyd
Pauline Mowat Mengebier
Emily Barrett Molewyk
Jane McRae Nauman
Carol Symon*

Margaret Fitch Szucs

Wilma Kirkwood Westerhof

CLASS OF 1952

23% Participation

Mary Burdon
Nancy MacInnes Davis
Edie Carter Jewett
Mary Deacon Kent
Carole Dodwell Martyn
Joan Rudolf McKinney
Claire Wheeler Mowat
Susan Watson Nelson
Betty Lawrence Wansbrough
Ruth Hunter Parkinson
Isabel Brazill Paterson-Smyth
Judy Ratcliffe
Huda Gardiner Scott
Pat Eckardt Sedgwick
Sally Garratt Vernon

CLASS OF 1953

24% Participation

Anne Aitken Baker
Nancy Turville Bongard
Wendy Robinette Calder
Jill Bartlett Colley +
Judith Wright Coppie
Betty Bunting Duffield
Marigold Murray Genis
Diana Porritt Greer
Marilyn Ward King
Carly Pepler

CLASS OF 1954

33% Participation

Jean French Bell
Joanne Tolton Connolly
Elizabeth Stanbury Curry
Louise Sinclair Denny
Lee Proctor Gardiner
Helen Hetherington Gruber
Penelope Lash Lorimer
Audrey Prettie Mason
Sally Bryden McCulloch
Ruth Milne
Elda Phipps Thomas
Janet Couatts Tieman
Jane Gunn Warner
Margot MacLaren Watt

CLASS OF 1955

25% Participation

Jane Dalton Avery
Ann Borden Bull
Barbara Graham Carter
Mary Saunderson Chamberlain
Margo Rudolf Coleman
Diane Drewry Elder

DONATIONS IN ACTION

The Institute at Havergal: The Institute provides school-wide education about the key forces shaping our world and delivers programs that enable students to explore and engage in the world both locally and internationally.

In 2011-2012, Havergal faculty, staff and students continued environmental sustainability initiatives to reduce the school's carbon footprint, which included the development of a new composting program.



Susan Bicknell Leslie ☞ +
Susan Scroggie Metcalf ☞
Elizabeth Burnett Rolston ☞
Patricia Gay Sills
Anne Hamilton Smith ☞
Nancy White Thoman ☞

CLASS OF 1956

41% Participation
Libby Wade Abbott +
Ann Chalmers Anderson
Diane Overholt Bethune ☞
Margo Morris Booth
Earlaine Stewart Collins ☞ +
Anne Gibson
Barbara Goodwin-Zeibots ☞
Ann McCullagh Hogarth
Sonia Armstrong Labatt ☞ +
Dorothy Vernon Macdonald
Arlene Wardle Matheson
Mary Percival Maxwell
Barbara Trent Morris ☞ +
Linda Gutterson Munk ☞
Valerie Wilson Rhead
Susan Hamilton Sisam ☞
Lynne Beament Tuer
Nancy Wrong Wallace

CLASS OF 1957

15% Participation
Cynthia Johnson Clarkson ☞
Helenmaria Steiger Darker ☞
Linda FitzGerald Grasley
Catherine Sheldon Lazier ☞
Olivia Lemmon Lee ☞ +
Judie Short Roberts
Norma Neilson Smith ☞

CLASS OF 1958

11% Participation
Frances Ruttan Emery ☞
Susanna Barker Evans ☞
Barbara Cooper Hladyniuk ☞
Cynthia Thun Willauer
Lyn Hamilton Zacher ☞ +

CLASS OF 1959

20% Participation
Kathleen Bourke Bell ☞
Tannis Clarkson ☞
Christine Coutts Clement ☞
Missy Hart DeGeer ☞
Beverly Bruce Hargraft ☞ +
Mary Pratt Harlan ☞ +
Judith Cory Mangoff ☞ +
Susan Small Morton ☞
Mary Jean Borden Potter ☞
Anita Krische Von Graffen ☞
Patricia Hamilton Winter ☞

CLASS OF 1960

18% Participation
Marsha Davis Brooks ☞
Anne Carter ☞
Rosemary Elder Dick ☞
Barbara Rea Lemmon
Catherine White Loubser ☞
Ann Griffin McCall ☞
Ruth Atkinson McDonald
Margaret Keens Morden ☞
Jane Allport Mottershead ☞
Joan Kingsmill Roper ☞
Susan Woods
Polly Beck Wright ☞

CLASS OF 1961

47% Participation
Susan Ortvad Armitage ☞
Catherine Callaghan Barclay
Karen Lamb Betteridge
Sally Armstrong Carson ☞
Maureen Cunningham
Lynne Cowan Devine ☞
Leith Drury
Judith Seccombe Dunn ☞ +
Patricia Seccombe Eby
Shari Graham Fell
Betty Ann Mayhew Guilday
Willo Murby Heesom
Ann Hamilton Hill
Isabel Godefroy Hodge
Carol Pielsticker Lavoie
Joey Legate ☞
Christie Cohrs McKechnie ☞
Lynn Robinette Mekinda
Beverly Mitchell*
Margo Taylor Morgan
Ann Marshall Nicholl
Diane Stewart Nixon
Bobs Ongley ☞ +
Betsy Bell Perkin ☞ +
Mary Ann Edgar Rashleigh
Carl Shepard
Judy Russell Strang ☞
Patricia Hutchinson Taylor
Sally Taylor ☞ +
Melinda Northway Thompson ☞
Karen Rechnitzer White ☞
Anna Whitley ☞ +
Peggy Cowie Winterton

CLASS OF 1962

12% Participation
Judith Johnson Bonham ☞
Virginia Woods Grant +
Janet Cox Lumbers ☞
Mary Elspeth Lougheed Milosh ☞
Mary Davis Nelles ☞
Nancy Lash Robinson ☞

Marcia Cox Vaughey ☞

CLASS OF 1963

13% Participation
Luba Frastacky ☞
Barbara Key Lea ☞
Cynthia Harding Leeper ☞
Beverly Clappison Maggiacomo ☞
Honor Garland Nivin ☞
Sherry Taylor Drew
Carroll Wistow Willer ☞

CLASS OF 1964

13% Participation
Anne Laybourne Kendall ☞ +
Mary Susanne Lamont ☞
Carolyn McMaster ☞
Lani Nugent Moses ☞
Judy Sutton Simcoe
Libby Belton Skinner ☞
Teresa Woods Snelgrove
Kathleen Toguri ☞

CLASS OF 1965

19% Participation
Jill Thompson Andersons
Buffy Spears Ash
Susan Dunster Borden
Deborah Dewar Douglas
Ann Woodroffe Ferguson ☞
Carolyn Campbell Kernohan
Ele Johnson Kyle
Vivien Ludlow ☞
Joyce Allan McAlpine
Dinny McLaren McCraney ☞
Mary Ross McKee
Susan Sheen ☞ +

CLASS OF 1966

16% Participation
Elizabeth Austin
Merridy Cox Bradley ☞
Barbara Lynn Ross
Karen Corlett Druker
Ann Waddell Dunlop ☞
Gay Mills McNeil ☞
Lea Aird Menear
Jane Ross ☞
Roslyn Kaye Stollery ☞
Barb Beatty Taylor ☞ +

CLASS OF 1967

7% Participation
Paddy Johnstone Clark
Margaret Murchie Erwin ☞
Linda Leader Lownds ☞
Janet Woolley Wright ☞

CLASS OF 1968

13% Participation
Robin Urquhart Beddis ☞
Debby Grant Bento ☞
Elizabeth Hall-Findlay ☞
Vicky Dunbar Koudstaal ☞
Nicole Langley Mitescu ☞
Betsy Cruikshank Swaine
Anita Fallis Taylor ☞
Gail Hunnisett Thomsen ☞

CLASS OF 1969

12% Participation
Alexena Thun Frazee ☞
Gillian Duder Huntley ☞
Kathryn McCain ☞
Marianne Oundjian ☞ +
Andrya Solomon Schulte
Helen Sinclair ☞ +

CLASS OF 1970

9% Participation
Judy Cameron
Lenora Hume
Mergie Rylie Pacini ☞
Jane Robinson ☞
Kathleen Weekes Southee
Rosamund Morley Storr

CLASS OF 1971

21% Participation
Lesley LeMesurier Alboini ☞
Susan Robinson Bell
Paula McKeek Costello
Anne Gibson +
Mimi Andresen Gray
Lea Hansen ☞ +
Judy Betteridge Haust ☞
Heather Kitchen ☞ +
Ann Robertson
Elizabeth White ☞
Jane Wilson ☞
Julie Stephenson Wood
Liz Woolley

CLASS OF 1972

10% Participation
Márta Ecsedi ☞
Louise Park MacMillan ☞ +
Jill McAlpine ☞
Vicky Oulster
Anne Poulson Riley
David and Sharon Davis Tanner

CLASS OF 1973

9% Participation
Lolly Gillen
Lynn Plummer Morse ☞
Mary Lou Sherman ☞ +

Annual Giving: Gifts from our Old Girls Community

(cont.)

Frances Mackay Simson 🌸
Sally Moffat Taylor

CLASS OF 1974

12% Participation

Mary Bull 🌸
Cathy Robinson Clark 🌸 +
Laurie Goad
Susie Wright Gooderham 🌸
Catherine Vernon Martin 🌸 +
Vivian Blechingberg Sichel
Jennifer Tory 🌸 +

CLASS OF 1975

9% Participation

Anne Livingston Murray 🌸
Laurie Omstead
Jennifer Parkin 🌸
Judith Floras Rance 🌸
Edwina Dick Stoate 🌸
Fiona Strachan 🌸

CLASS OF 1976

15% Participation

Debbie Winspear Allan 🌸
Judy Mitchell Carlton
Helen Davies-Miller
Celia Hitch +
Sue Kennedy
Heather Fisher Kennedy 🌸
Hilary Meredith
Liz Thackray Pigott
Mary Rusz 🌸 +
Margie Zeidler 🌸

CLASS OF 1977

11% Participation

Robyn Kitchen Beattie
Elizabeth Carruthers 🌸
Elizabeth Van de Mark Gallagher 🌸 +
Catherine Lawrence 🌸 +
Sandy Thomas
Ann McClelland Topp 🌸

CLASS OF 1978

17% Participation

Brenda Morrow Barry 🌸
Nancy Tregunno Berkhout
Kathryn Caldwell 🌸
Devon Codesmith
Gillian Hawker
Theresa Sherwood Karakatsanis
Tatiana Jaciw Kowryga
Susan Tompkins Lounsbury
Jodi Niblett 🌸
Susan Gillespie Nicholas 🌸
Eden Oliver 🌸 +
Catherine Rusby 🌸
Julia Stanley Weaver 🌸

CLASS OF 1979

12% Participation

Jane Clarke Beatty
Janet Currie MacPhail 🌸 +
Lisa McAlpine 🌸 +
Kathryn Rusz Ortner 🌸
Sarah Sedgwick Parry 🌸
Barbara Robertson-Mann 🌸 +
Norah Hillary Seguin 🌸
Leslee Johnston Thompson 🌸

CLASS OF 1980

8% Participation

Martha Heighington +
Karen Johnson 🌸
Jacquie Labatt 🌸 +
Meghan Robertson 🌸 +
Joan Evans Stock 🌸
Pamela Grogan Taylor

CLASS OF 1981

11% Participation

Ruth Wansbrough Gould +
Martha King
Elizabeth Lancaster 🌸 +
Christine Lay 🌸 +
Beth Barford Malcolm 🌸 +
Martha Goad McFarlane 🌸
Mary Metcalf Muir 🌸
Margot Potter Willoughby +

CLASS OF 1982

12% Participation

Dinnie Hogarth Baker 🌸
Kathryn Chapman Curnow 🌸
Jeanne DesBrisay 🌸 +
Julie Di Lorenzo +
Katharine Richardson Dingley
Joanne Hyde Gooding 🌸
Diane King MacNicol 🌸
Carole Matear 🌸
Annette Buchman Mincer 🌸 +

CLASS OF 1983

24% Participation

Karen Jewett Allen 🌸
Lynne Archibald 🌸
Elizabeth King
Patricia Kaczanowski Kazan
Karen Beatty 🌸 +
Pauline Chan-Thomas 🌸
Jacqueline Cooper 🌸
Susan Gardiner 🌸
Patti Kaczanowski Kazan
Elizabeth King 🌸 +
Michelle Koerner 🌸
Anne Lawrence Harrop 🌸 +
Vanessa Morgan
Kitty O'Flynn 🌸

Naomi Sedgwick Schafler 🌸
Kirste Spencer +
Elizabeth Walli
Alexandra Warly 🌸 +
Karen Wei 🌸

CLASS OF 1984

4% Participation

Nicola Von Schroeter Craig
Jennifer Dolman
Margot Chapman Macdonnell 🌸

CLASS OF 1985

9% Participation

Lisa Boxall Buchan
Cheri Grogan
Sandra Hooper Heldman 🌸
Elizabeth Richardson McCall 🌸
Gina Ogilvie 🌸
Lindsay Whyte-Berry
Mary-Kathleen Delicaet Young

CLASS OF 1986

16% Participation

Jeannie Callum 🌸
Michele Farrugia 🌸
Amy Gaskin 🌸 +
Stephanie Hickman
Rosemary Marotta
Lisa MacLatchy Naprawa 🌸
Allyson Whyte Nowak 🌸 +
Christina Keith Pazerekas +
Marcia Pennefather
Philana Poon 🌸
Janet Scott
Sara Taylor

CLASS OF 1987

12% Participation

Beth Graham Burrows
Susanne Hickey
Sarah Innes
Susan McDonald
Teresa O
Katherine Ritcey Sisley 🌸 +
Julie Rennie Stanton
Nicole Beckmann Swales 🌸
Vic Tait 🌸

CLASS OF 1988

11% Participation

Marcy Luba Barton 🌸
Tina Jagdeo
Angela Meharg
Dawn Creber O'Dwyer
Cynthia Rutherford Patry
Linda Probyn 🌸 +
Yvonne Healy Robertson
Kathryn Ruhland 🌸 +

Lillian Tang Smith 🌸
Sareena Ghulati Wildberger 🌸 +

CLASS OF 1989

6% Participation

Catherine Paterson Gunn 🌸 +
Catharine Heddle 🌸
Anne Noble 🌸
Sarah Richardson

CLASS OF 1990

10% Participation

Shannon Andersen 🌸
Lindsay Thompson Black
Melissa Tabacoff Cavelti
Nikki Lee Davidson 🌸 +
Katherine Gurney 🌸
Anne O'Rorke Hughes
Deborah Roth Ledley 🌸
Fiona Hudson Lennard
Susie Macrae
Laurie Ogilvie Melbourne 🌸
Katie Rennie Osler 🌸 +
Thecla Sweeney +

CLASS OF 1991

5% Participation

Celia Johnson 🌸 +
Letitia Chan Peypoch 🌸 +
Kristen Skinner-Boyd 🌸

CLASS OF 1992

15% Participation

Melinda Anderson
Alexandra Squires Bos +
Dora Boylen-Pabst 🌸
Natalie Waczko Crate 🌸 +
Alexandra De Freitas
Rachel DeBlois 🌸 +
Allison Starkman Kotler
Dale McIntosh 🌸 +
Jennifer Chubb Newton
Rebekah Nugent McIntosh
Andrea Ou-Hingwan 🌸
Melanie Plet 🌸
Wendy Sherrick 🌸 +
Natasha Smith

CLASS OF 1993

5% Participation

Allison Doyle Cook 🌸
Allison Fisher
Britta Hild
Tamara Kolber 🌸

CLASS OF 1994

4% Participation

Lori Buchanan



Why I Support Havergal

“As an Old Girl, my education at Havergal helped me to establish the core values of who I am, who I wanted to be and what I wanted to accomplish in my life. Havergal gave me the self confidence, education and leadership to pursue my secondary school education, find a great career and then give back to the school when I could afford to. Whenever I think about the school, I think fondly about all the great friendships that I made here, which continue to grow 30 years later.

As a parent, I give annually to the school so that we—the parent community—can offer our daughters the very best when it comes to faculty and staff, facilities and all the other co-curricular programs that are offered at Havergal. I also give so that we can expand the bursary fund to enable those that can't afford Havergal the chance to experience a fabulous education.”

– Joanne Hyde Gooding 1982, HCC Chair 2012-2013

Alexandra Haber
 Gladys Hui
 Nicole Jakobek
 Julianne Jakobek
 Marija Janjos
 Nicole Jauernig
 Kimberly Kawaja
 Sydney Kirkland
 Nga Ko
 Tiffany Kwok
 Alysha Law
 Katie Lear
 Gladys Leung
 Madeline Lissus
 Pen Long
 Maddy MacDougall
 Hayley Machat
 Emma Macintosh
 Taylor Maguire
 Ashley Marzouca
 Shannon McCabe
 Stephanie McCall
 Danielle Meschino
 Michaela Milgrom
 Kamila Mukherjee
 Edmee Nataprawira
 Jocelyn Nullmeyer
 Elie Park +
 Ellen Poile
 Katherine Puskas
 Annie Riedlinger
 Caitlin Ronald
 Catherine Ruscica
 Laura Samarze
 Helen Song
 Lauren Thomas
 Charlotte Thompson
 Kelly Thomson
 Sara Turner
 Elena Vorvis
 Katherine Walker
 Mimi Wang
 Emma Webb
 Erika Wilcox
 Alexandra Woolley
 Rachel Xian
 Annie Yang
 Katie Zechner
 Michelle Zhao

+ Indicates consecutive donations over the last three fiscal years

+ Indicates an increase in gift amount over last fiscal

** Indicates Old Girls who are deceased*

CLASS OF 2003

3% Participation
 Amanda Brennan +
 Sheila McNeill
 Katie Nelson
 Ethel Cohen Weiner
 Elizabeth Mingay

CLASS OF 2004

1% Participation
 Vanessa Rambihar

CLASS OF 2005

2% Participation
 Kate Applin
 Katie Matthews +

CLASS OF 2006

1% Participation
 Erin Hoener

CLASS OF 2008

1% Participation
 Alexandra Mingay +

CLASS OF 2009

1% Participation
 Julia Steegstra +

CLASS OF 2010

2% Participation
 Harley English-Dixon +
 Virginia Hetherington +

CLASS OF 2012

54% Participation
 Sara Abhari
 Ailsa Agnew
 Yasmin Alameddine
 Sabrina Apitz-Grossman
 Natalie Biringer
 Olivia Bochenek
 Riya Chandaria
 Sarah Chin
 Katie Chin
 Sonja Chu
 Cara Cishecki
 Nicole Clarizio
 Maddie DeGuerre
 Tessa Denison
 Lauren Ellis
 Akeesha Footman
 Sarah Freeman
 Katie Gerstle
 Marina Ghobrial
 Simran Ghoman
 Miriam Gladstone
 Sarah Glickman
 Mariya Gorlova

Tory Perkin
 Lesley Smythe +

CLASS OF 1995

4% Participation
 Kate Bassil
 Elizabeth Carr +
 Donna Smythe Wilson

CLASS OF 1996

8% Participation
 Sara Cohen-Gelfand +
 Virginia Greer
 Tamara Kerr
 Kari McCreath +
 Andrea Statton
 Meghan Arthur Tupholme +
 Tanja Vlahovich +

CLASS OF 1997

8% Participation
 Christine Etherington
 Mara Levin Kotansky
 Angela Kretz +
 Catherine Molnar Livingstone
 Vanessa Oliver
 Tara Dermastja Scott
 Janie Wong +

CLASS OF 1998

3% Participation
 Aili McConnon Adamson
 Marian Hoffmann +
 Sherryn Rambihar

CLASS OF 1999

4% Participation
 Hasmig Shahinian
 Rachel Jacobson Silver +
 Martha Cohen Simmons +
 Jenny Yip +

CLASS OF 2000

2% Participation
 Caleigh Pacini Meehan +
 Alessandra Palombo Sollazzo

CLASS OF 2001

2% Participation
 Carrie Anderson
 Gillian Apps
 Kristin O'Rourke +

CLASS OF 2002

3% Participation
 Nina Mafriani
 Eleanor McDonald +
 Sarah Rea
 Katharine Stoate

Annual Giving: Gifts from Other Community Members

CORPORATIONS

4ward Group Inc.
Bank of America Merrill Lynch
Basil CSI
BMO Nesbitt Burns Inc.
Counselling & Healing Services
Dr. B. Makanjee Medicine
Professional Corp
Fountas Medicine Professional
Corporation
GlaxoSmithKline
Harvey Kalles Real Estate
KIK Custom Products
Romlek Enterprises Inc.
Shane Baghai Group of Companies
Telus
The LBJ Non-Profit Corporation
UBS Securities Canada Inc.

CURRENT GRANDPARENTS

Dennis and Dorice Caplice 🇺🇸
Colleen Carmichael
Daphne Fisher Currie 1947 and
George Currie 🇺🇸
Robert and Carol David
Diane Drewry Elder 1955 and
John Elder 🇺🇸
Mary Clemes Ensor 1944 🇺🇸
Euan and Joan Ferguson 🇺🇸
James and Norma Gaskin 🇺🇸
Diana Jacob Goad 1947 and John Goad 🇺🇸
Colin and Sherrill Graham 🇺🇸
Diana Porritt Greer 1953 and
Donald Greer 🇺🇸
Dallas and Jane Grogan
Marvyn and Carmen Hall
Norman and Nell Hardie
Sylvia Humber
Edie Carter Jewett 1952 🇺🇸
Marilyn Ward King 1953 and
Wally King 🇺🇸
Sonia Armstrong Labatt 1956 and
Arthur Labatt 🇺🇸 +
Jean Martin Lawrence 1951 and
William Lawrence 🇺🇸 +
David and Elizabeth Lay 🇺🇸
Ann Macdonald Macintosh 1949 🇺🇸
Robert Marshall 🇺🇸*
Margaret McKenzie
Beverley Mitchell 1961*
Marijan and Dina Muchalov
Anne Nerby
Robert and Hazel Ogilvie
Marion McTaggart Oliver 1950 🇺🇸
Pamela and Desmond O'Rorke
Mary Jean Borden Potter 1959 and
Frank Potter 🇺🇸
Jean Probyn
Tim and Gail Regan 🇺🇸
Hugh and Janice Rennie
Gillian and Bruce Ross 🇺🇸

Pat Eckardt Sedgwick 1952 🇺🇸
Adele Aziz Shamie 1949 and
Norman Shamie 🇺🇸
Anne Hamilton Smith 1955 and
Gordon Smith 🇺🇸
Colleen Smith 🇺🇸
Teresa Woods Snelgrove 1964 and
Timothy Snelgrove
Melinda Northway Thompson 1961 and
John Thompson 🇺🇸
Ben and Lilian Unantenne 🇺🇸
Sylvia Wein 🇺🇸
William White
H. Wieland
George Wilson 🇺🇸
Anonymous (2)

FACULTY AND STAFF

Sheila Allen
Diane Ankenmann 🇺🇸 +
Martina Arbon
Juan Arellano
Glenn and Catherine Atkinson
Jill and Ivars Azis
Kate Balsara-Pardoe 🇺🇸
Shauna Barnes
Heather Barr 🇺🇸
Kate Berchtold-Wall
Tatiana Bidiak
Sarah Bruce 🇺🇸 +
Stephanie Bryant
Lori Buchanan 1994
Julianna Buck
Gordon Bullock 🇺🇸 +
Peter Caira
Heather Cameron
Helen Carayannis
Alysha Catracchia
Catherine Caven Ortved
Ingrid Chadwick
Louise Cholette-Rees 🇺🇸 +
Cindy Chi
Britney Coleman
Lindsay Crawford
Jacquelyn Cummings
Sally Danto +
Nicole Davies
Seonaid Davis 🇺🇸 +
Leta Dayfoot
Judith DeBoer
Leslie Anne Dexter
Kathryn Eales
Kelly and Corbet Elder 🇺🇸
Christine Etherington 1997
Nora Evans
Alison Falby
Helena Follows
France Gareau
Ylita Garland
Franca Gemignani
Jennifer Goldberg
Linda Goldspink
Cissy Goodridge
Susan Groesbeck 🇺🇸 +
Cheri Grogan 1985
Lee Hamr
Catherine Henderson
Veronica Hew
Maggie Houston-White 🇺🇸 +
Janet Howes 🇺🇸 +
Lynn Janes
Amy Joliat
Gail Kendall
John Kerr
Jesebeth Kiocho
Sandra Langdon 🇺🇸 +
Ashley Leathley
Raeme Lockington
Laura Logaridis
Kari Macer 🇺🇸 +
Barb Macintosh 🇺🇸
Karen Mackasey
Jennifer Mandala 🇺🇸 +
Sheila McNeill 2003
Andrew McHaffie
Larissa McIntyre
Heather McLean 🇺🇸 +
Lea Aird Menear 1966
Sharon Miller
Anita Moore
Mary Metcalf Muir 1981 🇺🇸
Erin Murphy
Sandra Nelson
Lindsay Norberg
Sara O'Neill
Trish Osler
Andrea Ou-Hingwan 1992 🇺🇸
Burke Paterson
Jennifer Patterson
Ann Peel 🇺🇸 +
Jennifer Peirce
Leanne Petroff
Lauren Phillips
Susan Pink
Maureen Prior
Valerie Rixon
Brenda Robson 🇺🇸 +
Lois Rowe 🇺🇸 +
Nasreen Sevany
Sindy Shetzen
Paul Shuebrook 🇺🇸
Eva Siatkowski
Roger Sibalon
Leslie Siegrist
Carrie Steele
Yvonne Stephens
David Sumner 🇺🇸 +
Ina Szekely
Valerie Taylor
Artie Tellis
Katie Tranter
Carol Tsang

Young Um 🇺🇸
Petra Weymes
Karen Whitfield 🇺🇸
Louise Yearwood 🇺🇸 +
Anonymous (6)

FORMER STAFF

Susan Ortved Armitage 1961 🇺🇸
Pam Beatson +
Dora Boylen-Pabst 1992 🇺🇸
Rosemary Corbett 🇺🇸
Marcelle DeFreitas 🇺🇸
Susan Ditchburn 🇺🇸 +
Kathryn Dowthwaite 🇺🇸
Sharon Doyle
Peggy Dykes Page 🇺🇸 +
Mary Graham 🇺🇸
Phyllis Greenberg 🇺🇸 +
Gail Herder 🇺🇸
Eleanor Hirshfeld
Millie Hunter 🇺🇸 +
Ann Kerwin 🇺🇸 +
Dorothy Lancaster 🇺🇸
Peter Lewis 🇺🇸 +
Norman Martin
Mary McPherson 1943 🇺🇸
Annemiek Miller 🇺🇸 +
Marna O'Brien 🇺🇸
Margie Ryrrie Pacini 1970 🇺🇸
Denise Power 🇺🇸 +
Judy Ratcliffe 1952 🇺🇸
Judith Rees 🇺🇸 +
Claudia Rogers 🇺🇸
Joan Kingsmill Roper 1960 🇺🇸
Gillian and Bruce Ross 🇺🇸
Caroline Spearing
Barb Beatty Taylor 1966 🇺🇸 +
Margaret Thompson 🇺🇸
Valerie Turner
Madeleine Volak 🇺🇸 +
Jilla Williams 🇺🇸 +
Priscilla Winn Barlow 🇺🇸
Anonymous (1)

FOUNDATIONS

1999 Jauernig Family Trust
Sims Family Charitable Giving Fund
The Andy and Beth Burgess Family
Foundation
The Flatley Family Foundation +
The Gordon & Lorraine Gibson Family
Foundation
The Gregory J. David Foundation
The Manchee Foundation 🇺🇸
The Ralph Barford Foundation 🇺🇸
The Temerty Family Foundation 🇺🇸 +
Toronto Community Foundation

FRIENDS

Deborah Beatty
Michael Berry



DONATIONS IN ACTION

Class Endowments: Old Girls and their families have established Class Endowments as a legacy to their graduating year to support an initiative of their choice at Havergal.

More than 20 graduating classes have chosen to support bursaries for students. Other classes support global outreach, community initiatives, curriculum development, environmental sustainability and initiatives such as the Dr. Catherine Steele 1928 Archives.

Douglas Cunningham
John and Jean Evans
John-Paul Grabowski
Nancy Griffin +
Jane Minett
Helen and Ronald Smith ✨
Jeremy and Susan Walker

PAST PARENTS

Jane Aird ✨
Lesley LeMesurier Alboini 1971 and Victor Alboini ✨
Tobin Davis and Sheila Allen
Forbes and Roberta Andersen ✨ +
Jill Thompson Andersons 1965
C.R. Ankemann
Malcolm and Carolyn Archibald ✨ +
Frances and Gus Arrigo ✨
Zaira Murray Aspinall 1947 ✨ +
Fred and Lesley Ast ✨
Jane Dalton Avery 1955 ✨
Jill and Ivars Azis
Tony and Irma Baldanza
Brenda Morrow Barry 1978 and David Barry ✨
Robyn Kitchen Beattie 1977 and Kevin Beattie
Jane Clarke Beatty 1979 and Stephen Beatty
Paul and Kaye Beeston ✨
Susan Robinson Bell 1971 and Peter Bell
Sheila and William Best
Daleep and Nimmi Bharatwal ✨
Susan Dunster Borden 1965 and Henry Borden
Michael Boyd and Shelagh Donovan
Marsha Davis Brooks 1960 and Barry Brooks ✨
Ann Borden Bull 1955 and Charles Bull ✨
Joan Kalthoff Burt 1951 ✨
Rosemary and Chi Cheung
Morlan Rees and Louise Cholette-Rees ✨ +
Leah Cohen
Terry Colgan and Donna Jez ✨
Mary Ellis Cox 1936 ✨
Daphne Fisher Currie 1947 and George Currie ✨
Jennifer Duchesne ✨ +
Piotr and Barbara Duda +
Mary Clemes Ensor 1944 ✨
Rui and Joni Fernandes ✨
Aidan and Ruth Flatley +
George and Kate Fraser ✨
James and Norma Gaskin ✨
Pamela Mulqerna Gibson 1947 and Gordon Gibson ✨
Diana Jacob Goad 1947 and John Goad ✨
Susie Wright Gooderham 1974 and Michael Gooderham ✨
Colin and Sherrill Graham ✨
Michael and Nancy Graham ✨

Alasdair and Leslie Grant
Linda FitzGerald Grasley 1957
Diana Porrith Greer 1953 and Donald Greer ✨
Dallas and Jane Grogan
Lee and Premek Hamr
Lea Hansen 1971 ✨ +
Norman and Nell Hardie
Gillian Hawker 1978 and Marty Perlmutter
Winifred Medland Hawks 1941 and Gordon Hawks
Catherine Henderson and Borys Terebenec
Gail and James Herder ✨
David and Kathie Hetherington ✨ +
Alan Hibben ✨
Andre and Jocelyn Hidi ✨ +
Eleanor and Fred Hirshfeld
June Dow Histrop 1942 and Arthur Histrop
Ann McCullagh Hogarth 1956
Keith Hoilett
Janet and Ron Howes ✨ +
Mansoor and Amna Husain ✨
Horne Ing and Joan Jeu ✨
Roberta Innes ✨ +
John and Elisabeth Johnson ✨
Carolyn Campbell Kernohan 1965
David and Sheryl Kerr ✨ +
Marilyn Ward King 1953 and Wally King ✨
Sonia Armstrong Labatt 1956 and Arthur Labatt ✨ +
Dorothy Lancaster ✨
Elizabeh Lancaster 1981 ✨ +
Catherine Lawrence 1977 and Jerome Morse ✨ +
Jean Martin Lawrence 1951 and William Lawrence ✨ +
Douglas and Christine Lawson ✨ +
David and Elizabeth Lay ✨
Olivia Lemmon Lee 1957 ✨ +
Barbara Rea Lemmon 1960 and David Lemmon
Susan Bicknell Leslie 1955 and William Leslie ✨ +
Peter Leung and Joy Ip ✨
Peter Lewis ✨ +
Gary and Fiona Liffman
Margaret Haultain Littlejohn 1946 and Edward Littlejohn
Helen Forwood Lloyd 1947 and Bruce Lloyd ✨
Lee and Pauline Lo ✨
Linda Leader Lownds 1967 ✨
Warren and Karin Lundy ✨
Virginia Robertson Macdonald 1946 and Sinclair Macdonald
Jane Carter MacDonal 1946 ✨
Ralph and Carolyn MacDonald
Jane Northey MacKinnon 1947 and Ronald MacKinnon ✨

Diane King MacNicol 1982 and David MacNicol ✨
Janet Currie MacPhail 1979 and Steve MacPhail
Beverley Clappison Maggiacomo 1963 and Paul Maggiacomo ✨
Jeanne Tate Manchee 1942 ✨
Anna and Lidio Mancuso
Robert Marshall ✨ *
Joyce Allan McAlpine 1965 and James McAlpine
Jill McAlpine 1972 and John Haag ✨
Kathryn McCain 1969 and Jamie Pyper ✨
Nonie Sampson McClelland 1942 ✨
Dinny McLaren McCraney 1965 and Robert McCraney ✨
Mary Ross McKee 1965
Joan Rudolf McKinney 1952 and James Ian McKinney ✨
Georgina and Ned McLennan
Gay Mills McNeil 1966 and William McNeil ✨
Ronald and Wendy Melvin ✨ +
Lea Aird Menear 1966 and William Menear
Susan Scroggie Metcalf 1955 and Robert Metcalf ✨
Sharon and Stephen Miller
Mitizi Montgomery 1950 ✨
Patricia Montgomery 1947 ✨
Barbara Trent Morris 1956 and Robert Morris ✨ +
Mary Davis Nelles 1962 and Cliff Nelles ✨
Susan Watson Nelson 1952 and Jeremy Nelson ✨
Honor Garland Nivin 1963 ✨
Diane Stewart Nixon 1961 and Ted Nixon
Robert and Hazel Ogilvie
Marion McTaggart Oliver 1950 ✨
Pamela and Desmond O'Rorke
Margie Ryrie Pacini 1970 and Peter Pacini ✨
Fausto and Sivana Palombo
Jennifer Parkin 1975 and David George ✨
Sarah Sedgwick Parry 1979 and Mark Parry ✨
Betsy Bell Perkin 1961 ✨ +
Leanne and Neil Petroff
Eve Adams Pirrie 1944 ✨
Mary Jean Borden Potter 1959 and Frank Potter ✨
Jean Probyn
Joan Ballantyne Redfern 1947 ✨
Flora Moffat Renaud 1942 ✨
Hugh and Janice Rennie
Valerie Rixon
Judie Short Roberts 1957
Michael and Mary Rolland
Joan Kingsmill Roper 1960 and William Roper ✨
Gillian and Bruce Ross ✨

Roslyn and J. Franklin Roth
Barry and Eileen Russell ✨
Wayne and Dolores Saunders
Terry Sawh and Hera Ramlakhan ✨
Pat Eckardt Sedgwick 1952 ✨
Adele Aziz Shamie 1949 and Norman Shamie ✨
Peggy Pepler Sharpe 1947 and C. Sharpe ✨
Muriel Simpson and Michael Denega
Helen Sinclair 1969 and Paul Cantor ✨ +
Peter and Catherine Singer ✨
Samuel and Ruby Siu ✨
Lois and Lawrence Smith
Colleen Smith ✨
Teresa Woods Snelgrove 1964 and Timothy Snelgrove
Dode Tudhope Spencer 1941
Joan Steegstra ✨
Edwina Dick Stoaite 1975 and Tim Stoaite ✨
Margaret Strus
Paul and Margaret Tamaki
Barb Beatty Taylor 1966 and Doug Reid ✨ +
David and Ann Taylor ✨
Jennifer and Gregory Thompson
Dawn Wainwright Thompson 1937
Melinda Northway Thompson 1961 and John Thompson ✨
Ann McClelland Topp 1977 and Bruce Topp ✨
Jennifer Tory 1974 ✨ +
Liz Tory ✨
Barbara Waczko-Smith and Richard Smith ✨
Lenore Walters ✨
Julia Stanley Weaver 1978 and Donald Weaver ✨
Karen Wei 1983 and Seton Lor ✨
Kathleen Taylor Whatmough 1947 and Grant Whatmough
Shelagh Dunwoody Whitaker 1947 ✨
Elizabeth White 1971 and Andrew Czernik
Warren and Jannet Whitehead ✨
H. Wieland
George Wilson ✨
Rebecca Wong and Dennis Chu
Susan Woods 1960 and Frederick Woods
Gracie Rolph Wright 1944 ✨
Karl and Gabriele Zwiauer
Anonymous (2)

✨ Indicates consecutive donations over the last three fiscal years

+ Indicates an increase in gift amount over last fiscal

* Indicates donors who are deceased

The Proud Continuum: Havergal's 2012 Survey Results

In March 2012, we asked members of the Havergal community—parents, Old Girls, students, staff and faculty—to participate in a series of surveys conducted by Lookout Management Inc. At Havergal, we recognize the importance of having professionally prepared surveys, which can be systematically collected and analyzed for feedback as a way to celebrate what we do best and pre-emptively address areas of concern. The resulting data will allow us to further refine our strategic priorities and to continually improve our school. Having also hired Lookout Management Inc. in 2009 to conduct surveys, we are able to compare our current findings with the baseline data collected earlier.

The current surveys measured satisfaction levels on a variety of topics specific to each group and we are pleased to share the following brief summary of some of the key findings.

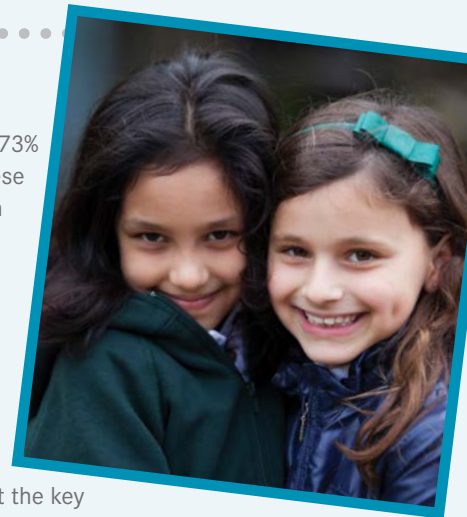
KEY FINDINGS FROM THE PARENT SURVEY

- 95% of parents are proud of their association with Havergal and agree that it has an excellent reputation.
- 85% of parents are well satisfied with Havergal; this represents an increase from the last survey conducted in 2009.
- 80% of parents agree that Havergal is a strong community that fosters the qualities of engagement in the world with impact.
- From a list of 25 specific school-life elements: 96% of parents are satisfied with Havergal's athletic facilities; 93% with the academic facilities; 90% with campus security; and 84% with the clarity of the school's mission, vision and values.
- When asked to rate Havergal's contribution to their daughters' growth: 84% of parents felt that the school instilled a sense of working collaboratively; 83% felt that it instilled a sense of respect for others; and 80% felt that it inculcated independent learning.
- 81% of parents rated Havergal's approach to teaching and learning as the key reason for choosing Havergal for their daughters. The buildings and grounds were the second highest

score in this category, with 73% of parents agreeing that these elements were significant in their choice.

KEY FINDINGS FROM THE STUDENT SURVEY

- More than 90% of students believe that Havergal encourages in them a love of learning.
- 80% of students believe that the key hallmark of a Havergal education is an enriched educational program with rigorous academic standards.
- 91% of students are satisfied with Havergal's athletic facilities, followed closely by the academic facilities (89%) and community partnership activities (80%).
- 55% of students believe that they have knowledge of environmental sustainability; this highlights the need to increase student knowledge in this area.
- With respect to their own preparedness across a series of academic and life skills, students rated themselves as: best prepared in respect for others (84%); working cooperatively in a group (75%); and independent learning (74%). Lower scores went to public speaking (48%) and organizing time effectively (54%).
- 83% of students report that Havergal was their first choice among schools. As with the parents, students rate buildings and grounds (76%) and Havergal's approach to teaching and learning (68%) as the top two reasons for choosing Havergal.





KEY FINDINGS FROM THE EMPLOYEE SURVEY

- 90% of faculty and staff indicate that they are a proud member of the Havergal community.
- 82% of the faculty feel that they have the freedom to be innovative in the classroom.
- When asked to rate their satisfaction with specific school-life elements, employees rated: campus security (96%); maintenance of facilities (90%); and access for faculty/staff to technological resources (83%) as their top three choices.
- Those areas in which teachers believe the school's contribution to student growth is most successful are critical thinking (92%) and the ability to work collaboratively (94%).

KEY FINDINGS FROM THE OLD GIRLS SURVEY

- 90% of Old Girls believe that Havergal is an excellent educational institution and one that they are proud to say they attended.
- 85% of Old Girls were very satisfied with their student experience at Havergal.
- 82% of Old Girls reported that there were faculty, staff, coaches or administrators who were a favourable influence on their Havergal student experience.
- 74% reported that they were enthusiastically involved in co-curricular activities while at Havergal.
- 73% of Old Girls are very satisfied with the Old Girls publication *The Chronicle*.

We have now shared the survey results with our constituents: Upper School students had an assembly to review the student survey results on October 12 with Social Science teacher Ina Szekely and Head of Upper School Sarah Bruce; the Board of Governors had a full presentation of the survey results with Kevin Graham from Lookout Management on September 24; faculty and staff had two presentations on the employee survey – on June 22 with Mr. Graham and on August 22 with the Principal. Old Girls survey results have been shared on the Old Girls Online Community. Mr. Graham will provide an overview of the parent survey results on December 4—invitations were sent to parents in November.



JOIN US FOR

Havergal's Gala Event

UNWRAP *Elegance*

May 4, 2013

The Carlu

444 YONGE STREET, TORONTO

Tickets will be available for purchase starting November 13, 2012, through Bassett Events at **416-616-4660**: single ticket is \$500; table of 10 is \$5,000. Sponsorships available—please contact Bassett Events.

Net proceeds will support the Outdoor Naturalized Learning Space in the Junior School, and the Aquatic Centre, Science Labs and Teaching Specialist Office in the Upper School.



Havergal
COLLEGE

Preparing young women to make a difference

1451 Avenue Road
Toronto, Ontario M5N 2H9
Telephone: 416.483.3519
Fax: 416.483.6796
www.havergal.on.ca
www.joyofbeinggirl.ca

