

One for all.  
Coray.

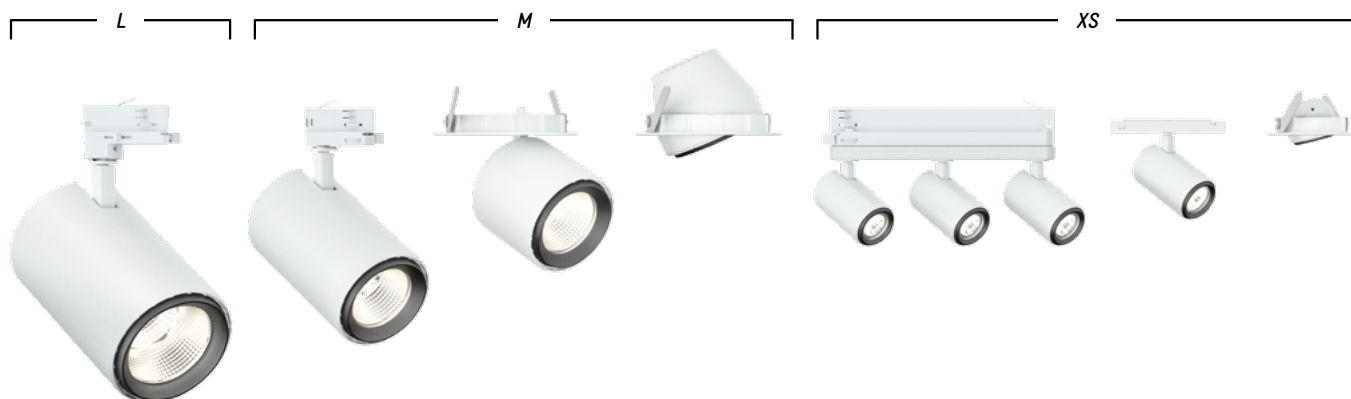


—  
*Coray*  
*The ultraflexible*  
*product family that*  
*meets all needs*  
—

Guiding retail light

A spotlight with a core and a ray – that's Coray. Our new product family focuses so much on the essential that it does something truly relevant: it creates something universal.





*Coray-Familie*  
Model sizes  
at a glance

*Coray*  
The new product family  
in the accustomed  
Ansorg quality

**The new product family, Coray, provides uniquely flexible lighting solutions and brilliant light settings in minimalist design. It gives lighting planners, architects and retailers untold freedom – for planning and creating atmospheres.**

More than 60 years of experience in creating lighting solutions for the retail sector have influenced the design of this product. Top light quality, maximum luminous efficiency, tailored to retail requirements: Coray is the very essence of what has always made Ansorg special.

With Coray, we not only satisfy our customers' demand for a universal lighting system and smaller spots, but with its range of different models, sizes and installation options, we offer a solution that can be applied in all retail areas and all lighting situations. And that means a harmonious design concept throughout the entire store.

#### **Innovative Technology**

Coray has been shaped by the developments of recent years. The technical highlights of this product range include technology built into the smallest possible space, integrated control gears, specially developed 3D reflector technology and the innovative use of collimators (lens technology). Together, they guarantee a luminous intensity that is unrivalled in their class.

#### **Award winner**

Coray has much to offer, and not only on the inside, but on the outside, too. That's why it has just won three international design prizes, including the Good Design Award, the Iconic Award and the German Design Award as a Special Mention in the category »Lighting«.



*Coray. One for all.*



One thing is all you need to  
show your customers the way:  
a path-breaking solution.

**Design-DNA**  
 Coray defines an entirely  
 new design vocabulary  
 that's rooted in  
 Ansong tradition



### The Ansong seal

100% quality control

Ansong's unique quality assurance system, which provides for 100% inspection of every product, will in future be made visible on all new products in the form of a quality seal.



### Bevelled edges

Quality and craftsmanship

Bevelling underscores the high standards we place on the craftsmanship that goes into the making of the product and gladdens the eye of the beholder by creating a harmonious, cohesive look.



### Simplicity

Focus on functionality

The combination of subtle, technical sophistication and simple design makes for a wide range of possibilities: integration of the control gear in the housing, several different LED and reflector configurations and full DALI control.



### Contrasting colours and materials

Creating structure

Coray opts for colour contrasts to lend greater expression to the design. Its material contrasts, on the other hand, are for the purpose of functionality. The plastic ring is flexible, which makes it easier to replace the reflector, whereas the robust aluminium housing serves as an excellent heat conductor.



### Automotive

Even car showrooms with very high ceilings present no challenges to this brilliant product family. Direct and indirect illumination, spot or surface light: Coray offers a variety of possibilities for highlighting the character of the vehicles and promoting sales.



### Food

Attractive illumination of foods is one of the most demanding areas of lighting architecture. The recessed and semi-recessed spotlights of the Coray family meet the very special demands placed on the illumination of food displays for accurate spotlighting and flexible pivoting.



# For large halls and the smallest of store highlights: Coray brings flexibility to lighting designs.



## Accessoires

Thanks to their built-in collimators, the smallest spotlights in the Coray family, in particular, direct their light with extreme accuracy, thus setting the scene for genuine highlights.



## Fashion

Pinpointed shop window lighting, subtle merchandise presentation or super-spots: Coray brings flexibility to visual merchandising in fashion and department stores. And with its innovative technology, the lighting system also makes for optimum colour rendition and a brilliant setting for the merchandise – even for the smallest store highlights.

Coray. One for all.



**Coray CXS**  
Full-size image



<b>Coray CXS</b>	<b>Light colour</b> 830, 930	<b>Lumen class</b> 500 Lm	<b>Collimator</b> SSP to MFL
	<b>Size</b> 114 mm x 93 mm ø 48 mm	<b>Installation</b> with adapter for 48 V power track	<b>Colours</b> Silver Black White

It is particularly dainty and mounted in a 48 V power track. Here, collimator (lens technology) guarantees an absolutely accurate super-spot. This makes it ideal for use at the side of shop windows or for particularly delicate goods displays. Films for expanding light distribution to spot or medium flood are additionally available as accessories.



<b>Coray CXT</b>	<b>Light colour</b> 830, 930	<b>Lumen class</b> 1500 Lm	<b>Collimator</b> SSP to MFL
	<b>Size</b> 228 mm x 121 mm ø 48 mm	<b>Installation</b> 3-phase power-track system	<b>Colours</b> Silver Black White

This model combines three Coray CXS spots in one power-track system that is ideally suited to the subtle presentation of merchandise and to setting the scene for small articles. Here, the control gear is integrated into the power-track adapter, and both collimators (lens technology) and accessory film are also used.





# Reduced to the universal. Coray – the multitalent.



<b>Coray CMT</b>	<b>Light colour</b> 830, 840, 927, 930	<b>Lumen class</b> Max. 3000 lm	<b>Reflector</b> SP to WFL
	<b>Size</b> 175 mm x 235 mm ø 108 mm	<b>Installation</b> 3-phase power-track system and ceiling installation via point outlet	<b>Colours</b> Silver Black White

The surface-mounted spotlight Coray CMT is the medium-sized version of Coray. A powerful control gear is integrated into the housing of this model. With a lumen class of up to 3,000 lm, it is suitable for all applications: spot, medium flood, flood or wide flood. It can be turned 90° and swivelled 360° for best possible light alignment.



<b>Coray CLT</b>	<b>Light colour</b> 830, 840, 927, 930	<b>Lumen class</b> Max. 5000 lm	<b>Reflector</b> SP to WFL
	<b>Size</b> 216 mm x 289 mm ø 135 mm	<b>Installation</b> Mains power supply via Wieland GST18i3 plug; cable length = 0.5 m	<b>Colours</b> Silver Black White

The surface-mounted spotlight Coray CLT is the largest and most powerful member of the Coray family. With a maximum of 5,000 lm, it is the first choice for high ceilings and rooms where a particularly powerful light output is required.

Please note: This product should be available from May 2017 onwards



<b>Coray CXR</b>	<b>Light colour</b> 830, 930	<b>Lumen class</b> 500 Lm	<b>Collimator</b> SSP to MFL
	<b>Size</b> ø 90 mm for 75 mm ceiling cut-out	<b>Installation</b> Mains power supply via Wieland GST18i3 plug; cable length = 0.5 m	<b>Colours</b> Silver Black White

Coray CXR is a recessed model that completes the range of super-spots. Like all other CX models, it is especially well suited to lighting situations in very small spaces, highlighting of brands and rooms with low ceilings. This model also features a collimator (lens technology) for efficient concentration and pinpointing of light. Films for expanding light distribution to spot or medium flood are additionally available as accessories.



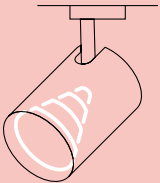
<b>Coray CMR</b>	<b>Light colour</b> 830, 840, 927, 930	<b>Lumen class</b> 3000 Lm	<b>Reflector</b> SP to WFL
	<b>Size</b> ø 148 mm for 130 mm ceiling cut-out	<b>Installation</b> Mains power supply via Wieland GST18i3 plug; cable length = 0.5 m	<b>Colours</b> Silver Black White

The recessed spotlight Coray CMR comes with minimal dimensions but maximum luminous efficiency. It is suitable for use as a down light or can be directed towards the merchandise display in the middle of a room. Thanks to the black paint finish of the bevelled inner ring, transitions to the ceiling are extremely unobtrusive when the lamp is at an angle, thus avoiding glimpses inside the ceiling.



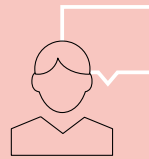
<b>Coray CMN</b>	<b>Light colour</b> 830, 840, 927, 930	<b>Lumen class</b> Max. 3000 lm	<b>Reflector</b> SP to WFL
	<b>Size</b> ø 148 mm Für 130 mm Decken- ausschnitt	<b>Installation</b> Mains power supply via Wieland GST18i3 plug; cable length = 0.5 m	<b>Colours</b> Silver Black White

Coray CMN is a semi-recessed spotlight. The space-saving control gear disappears into the ceiling, thus allowing the spotlight maximum possible flexibility. It can be turned 90° and swivelled 360° for best possible alignment and is particularly suitable for high wall decorations and peripheral areas. Thanks to its low volume, it is particularly suitable for ceilings with a low cavity height of at least 100 mm.



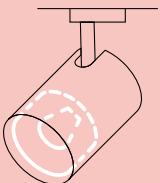
### 3D-faceted reflector technology

The reflectors built into the Coray product family are all Ansong developments. Equipped with efficient 3D facet technology that has been thoroughly tested in Ansong's own light laboratory, they ensure the perfect blend of light and an excellent focus on the merchandise while avoiding undesirable lighting effects. This is how we achieve even distribution of light coupled with outstanding colour quality.



### Advice

Looking for a unique lighting concept for your store? Talk to us. We are at your service in many locations around the world and will be only too pleased to give you a live demonstration of our Coray lighting system in our showrooms.



### Collimator technology

In the extra-small spotlights of the Coray family, the CX line, we use collimators instead of reflectors. A collimator ensures that the light of the LED is focused according to the lens principle. This way, we achieve maximum luminous efficiency even in our smallest model. With the aid of films, the light from the CX models can be expanded from a super-spot to a spot or medium flood.

For detailed specification sheets, please visit:  
[www.ansorg.com](http://www.ansorg.com)



# Ansorg worldwide

Headquarters

**Germany**

Ansorg GmbH  
Pilgerstraße 11  
D-45473 Mülheim an der Ruhr  
T +49 208 4846-0  
info@ansorg.com  
www.ansorg.com

**France**

T +33 1 44699510  
info-fr@ansorg.com

**United Kingdom / Ireland**

T +44 207 954 3058  
info-gb@ansorg.com

**Benelux**

T +31 20 5693840  
info-nl@ansorg.com

**Nordics**

T +46 709 850 580  
info-se@ansorg.com

**Iberia**

T +34 91 5755159  
info-es@ansorg.com

**Italy**

T +39 347 316 59 76  
info-it@ansorg.com

**Switzerland**

T +41 61 377 15 58  
info-ch@ansorg.com

**Austria**

T +49 208 4846-0  
info@ansorg.com

**Eastern Europe**

T +49 208 4846-0  
info@ansorg.com

**Middle East / India**

T +971 4 3219203  
info-ae@ansorg.com

**Latin America**

T +56 9 8950 7880  
info-cl@ansorg.com

**USA / Canada**

T +49 208 4846-0  
info@ansorg.com

**Asia / Australia**

T +49 208 4846-0  
info@ansorg.com

**Africa**

T +49 208 4846-0  
info@ansorg.com