



WWW.RYVALHOOPS.COM

COACH SERIES



REGULATION SIZE

BEST SELLER!



C872

BACKBOARD	72" x 42" x 1/2"
POLE	8" x 6"
OVERHANG	4'
ADJUSTABLE	5' - 10'
POLE & GUSSET PAD	2" High Density
BACKBOARD EDGE PAD	1"



C660

BACKBOARD	60" x 38" x 1/2"
POLE	6" x 6"
OVERHANG	3'
ADJUSTABLE	5' - 10'
POLE & GUSSET PAD	2" High Density
BACKBOARD EDGE PAD	1"



C554

BACKBOARD	54" x 36" x 1/2"
POLE	5" x 5"
OVERHANG	3'
ADJUSTABLE	5' - 10'
POLE & GUSSET PAD	2" High Density
BACKBOARD EDGE PAD	1"

UNIQUE FEATURES



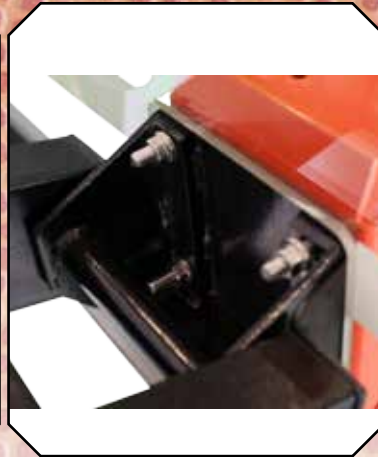
1/2" TEMPERED GLASS

- NBA & NCAA COMPETITION GRADE PERFORMANCE.
- CLEAR VIEW = NO H-FRAME IN SHOOTING SQUARE.
- SHATTER RESISTANT
- GYM QUALITY REBOUNDS
- HEAVY GAUGE ALUMINUM TRIM PROTECTS GLASS EDGE.



REMOVABLE HANDLE CRANK W/FX LIFT ASSIST CYLINDERS

- EFFORTLESS HEIGHT ADJUSTMENT.
- RAISE/LOWER HEIGHT TO EQUAL PLAYER'S SKILL LEVEL.
- STAINLESS STEEL HANDLE DETACHES TO PREVENT UNAUTHORIZED HEIGHT ADJUSTMENT.



DIRECT RIM TO STEEL ARM ATTACHMENT

- ELIMINATES ALL RIM CONTACT WITH GLASS.
- TRANSFERS ALL DUNKING FORCE TO STEEL POLE BASE.



BREAKAWAY RIM

- 3 SPRINGS THAT BREAKAWAY WITH 150 LB FORCE.
- PROTUBE NET CONNECTOR – ELIMINATES NET TIE HOOKS.

HEAVY DUTY FLEX RIM

- (SHOWN) 2 SPRINGS FLEX WITH FORCE.
- PROTUBE NET CONNECTOR – ELIMINATES NET TIE HOOKS.



8 SUPPORT GUSSETS

- WELDED GUSSETS ELIMINATE POLE SWAY & LESSEN VIBRATION.
- SLOTTED BASE PLATE HOLES ALLOW ADJUSTMENT TO SQUARE THE POLE TO THE DRIVEWAY OR COURT.

DESCRIPTION

Tempered Glass Backboard

Pole Size

Steel Thickness

Protective Undercoat

Finish Coating

Hardware

Rim

Adjustable Range

Lift Assist Mechanism

Overhang

Warranty

Weight

Shipping Weight

COACH C872

72" x 42" x 1/2"

8" x 6"

7 Gauge

Hot Dip Galvanized

Premium Powder Coat Paint

XXL Stainless Steel

Breakaway Competition Class Rim w/Triple Spring, w/pro-tube net connector.

5' - 10'

2 FX Lift Assist Cylinders

4'

Lifetime

627 lbs

775 lbs

COACH C660

60" x 38" x 1/2"

6" x 6"

7 Gauge

Hot Dip Galvanized

Premium Powder Coat Paint

XXL Stainless Steel

Heavy Duty Flex Rim w/Double Spring, w/pro-tube net connector.

5' - 10'

1 FX Lift Assist Cylinder

3'

Lifetime

501 lbs

620 lbs

COACH C554

54" x 36" x 1/2"

5" x 5"

7 Gauge

Hot Dip Galvanized

Premium Powder Coat Paint

XXL Stainless Steel

Heavy Duty Flex Rim w/Double Spring, w/pro-tube net connector.

5' - 10'

1 FX Lift Assist Cylinder

3'

Lifetime

462 lbs

575 lbs

PHENOM X SERIES



REGULATION SIZE



X672

BACKBOARD	72" x 42" x 3/8"
POLE	6" x 6"
OVERHANG	3'
ADJUSTABLE	7.5' - 10'
POLE PAD	1.25"
BACKBOARD EDGE PAD	1"

X660

BACKBOARD	60" x 38" x 3/8"
POLE	6" x 6"
OVERHANG	2.5'
ADJUSTABLE	7.5' - 10'
POLE PAD	1.25"
BACKBOARD EDGE PAD	1"

X554

BACKBOARD	54" x 36" x 3/8"
POLE	5" x 5"
OVERHANG	2.5'
ADJUSTABLE	7.5' - 10'
POLE PAD	1.25"
BACKBOARD EDGE PAD	1"

UNIQUE FEATURES



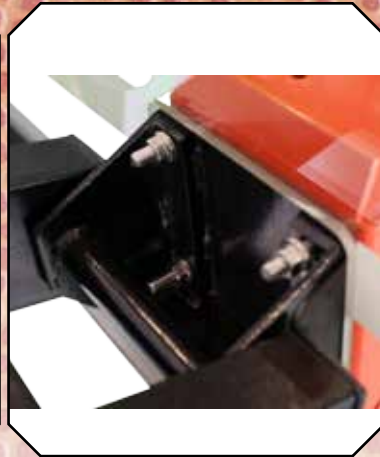
3/8" TEMPERED GLASS

CLEAR VIEW = NO H-FRAME IN SHOOTING SQUARE
SHATTER RESISTANT.



REMOVABLE 90° CRANK HANDLE

- EASY HEIGHT ADJUSTMENT 6' TO 10' RAISE/LOWER HEIGHT TO EQUAL PLAYER'S SKILL LEVEL.
- STAINLESS STEEL HANDLE DETACHES TO PREVENT UNAUTHORIZED HEIGHT ADJUSTMENT.



DIRECT RIM TO STEEL ARM ATTACHMENT

- ELIMINATES ALL RIM CONTACT WITH GLASS.
- TRANSFERS ALL DUNKING FORCE TO STEEL POLE BASE.



HEAVY DUTY FLEX RIM

- 2 SPRINGS FLEX WITH FORCE.
- PRO-TUBE NET CONNECTOR – ELIMINATES NET TIE HOOKS.



4 SUPPORT GUSSETS

- WELDED GUSSETS ELIMINATE POLE SWAY & LESSEN VIBRATION.
- SLOTTED BASE PLATE HOLES ALLOW ADJUSTMENT TO SQUARE THE POLE TO THE DRIVEWAY OR COURT.

DESCRIPTION

	PHENOM X672	PHENOM X660	PHENOM X554
Tempered Glass Backboard	72" x 42" x 3/8"	60" x 38" x 3/8"	54" x 36" x 3/8"
Pole Size	6" x 6"	6" x 6"	5" x 5"
Steel Thickness	11 Gauge	11 Gauge	11 Gauge
Protective Undercoat	Electroplated Zinc	Electroplated Zinc	Electroplated Zinc
Finish Coating	Premium Powder Coat Paint	Premium Powder Coat Paint	Premium Powder Coat Paint
Hardware	XL Stainless Steel	XL Stainless Steel	XL Stainless Steel
Rim	Heavy Duty Flex Rim w/Double Spring, w/pro-tube net connector.	Heavy Duty Flex Rim w/Double Spring, w/pro-tube net connector.	Heavy Duty Flex Rim w/Double Spring, w/pro-tube net connector.
Adjustable Range	7.5' - 10'	7.5' - 10'	7.5' - 10'
Overhang	3'	2.5'	2.5'
Warranty	Lifetime	Lifetime	Lifetime
Weight	410 lbs	357 lbs	315 lbs
Shipping Weight	550 lbs	470 lbs	430 lbs



DRIVEWAY SERIES



D560

D554

DESCRIPTION

Tempered Glass Backboard

D560

60" x 36" x 8mm

D554

54" x 32" x 6mm

Backboard Edge Pad

1"

1"

Pole Size

5" x 5"

5" x 5"

Steel Thickness

12 Gauge

12 Gauge

Finish Coating

Powder Coat Paint

Powder Coat Paint

Hardware

Quality Zinc Plated

Quality Zinc Plated

Rim

Medium Duty Flex Rim

Medium Duty Flex Rim

Adjustable Range

8' - 10'

8' - 10'

Overhang

2.5'

2.5'

Warranty

5 Year

5 Year

Weight

263 lbs

236 lbs

Shipping Weight

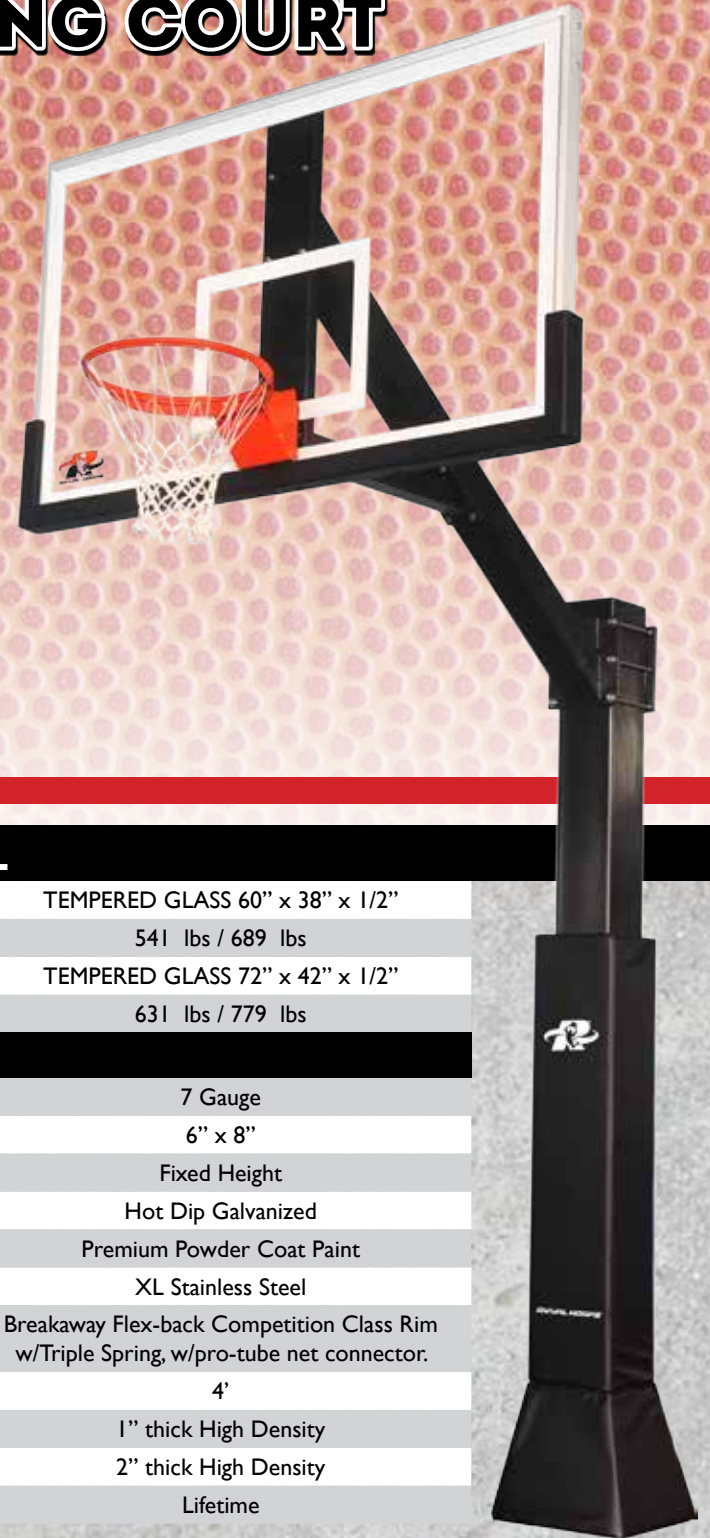
378 lbs

351 lbs

WALL MOUNT SERIES



KONG COURT



DESCRIPTION BY MODEL

WM72	TEMPERED GLASS 72" x 42" x 3/8"
Weight / Shipping Weight	308 lbs / 390 lbs
WM60	TEMPERED GLASS 60" x 38" x 3/8"
Weight / Shipping Weight	270 lbs / 330 lbs
WM54	TEMPERED GLASS 54" x 36" x 3/8"
Weight / Shipping Weight	259 lbs / 320 lbs

ALL WALL MOUNT SERIES

Backboard Edge Pad	1"
Protective Undercoat	Electroplated Zinc
Finish Coating	Premium Powder Coat Paint
Hardware	Stainless Steel
Rim	Heavy Duty Flex Rim w/Double Spring, w/Protube Net Connector
Adjustable Range	6' - 10'
Overhang	3'
Warranty	Lifetime

DESCRIPTION BY MODEL

K860	TEMPERED GLASS 60" x 38" x 1/2"
Weight / Shipping Weight	541 lbs / 689 lbs
K872	TEMPERED GLASS 72" x 42" x 1/2"
Weight / Shipping Weight K876	631 lbs / 779 lbs

ALL KONG COURT

Steel Thickness	7 Gauge
Pole Size	6" x 8"
Adjustable	Fixed Height
Protective Undercoat	Hot Dip Galvanized
Finish Coating	Premium Powder Coat Paint
Hardware	XL Stainless Steel
Rim	Breakaway Flex-back Competition Class Rim w/Triple Spring, w/pro-tube net connector.
Overhang	4'
Backboard Pad	1" thick High Density
Pole & Gusset Pad	2" thick High Density
Warranty	Lifetime



FREQUENTLY ASKED QUESTIONS

Q: What size basketball goal is best for me?

A: Backboards come in many different sizes, from a regulation 72" to the Best Seller 60", to 54". A good rule of thumb is to choose a backboard size based on the size of your play area. If you've got a home court or a large driveway, go for 72" - 60" backboards. If you're looking for a goal to put in a one-car drive way, a 54" backboard will fit well. Also keep in mind younger children grow up quickly, so purchase a hoop that your family grows into.

Q: Why should I buy a 1-piece pole instead of 2 or 3-piece pole?

A: The pole is the core of the basketball system that manages the force applied to the goal. A one-piece pole provides greatest performance. Ryval has 4", 5" and 6" square poles sizes that come in various gauges designed for competitive game play. Most 2 or 3-piece pole systems are not designed for vigorous play or hanging on the rim.

Q: What is steel "gauge"?

A: The lower the number, the thicker the steel. Thicker steel minimizes vibration.

Q: What is overhang?

A: Overhang is the distance from the front of the backboard to the front of the pole. This safe overhang space keeps the pole away from the backboard, allowing players to pass under the backboard without hitting the pole. Regulation overhang is 4 feet.

Q: What is tempered glass?

A: Is a safety glass that has a much higher tensile strength than regular glass. If the glass does break, the tempered toughened glass will cause the glass to shatter into small granular fragments instead of sharp shards. Tempered Glass offers the best rebound response available, better than acrylic & polycarbonate backboards. The most commonly encountered tempered glass is that used for side and rear windows in cars & trucks.

Q: Do you offer installation?

A: Call a local Ryval Hoops showroom or go to ryvalhoops.com to find a professional installer from our list

Q: How long does it take to ship from the time I order?

A: Ryval Hoops usually ships in 2 business days. You will receive tracking information the day it ships.

Q: Can I take my Ryval Hoops with me if I move?

A: Ryval Hoops are bolted to 4 very large "J" bolts that are cemented in a 48" concrete pier. You would need to purchase a new "J" bolt ground anchor assembly kit for your new location. After some disassembly you would un-bolt the goal from the threaded J-bolts & move to your new home.

Q: How are Ryval Hoops anchored into the ground?

A: Your Ryval "J" bolt ground anchor assembly will be set in a 48" deep hole that is a 21"x 21" square with 4 pieces of rebar using 12 to 18 bags of cement. See Illustration.

