



Complete Liquidation

AUCTION



500+ Pieces of
Rental Equipment

April 24th - 9am
Americus, GA

Online Bidding Available
visit our website
for details!



HendersonAuctions.com

Sumter County Fairgrounds - 903 Adderton St. Americus, GA - 1.800.850.2252



Rent Ready Low Hour Equipment



HendersonAuctions.com

Online Bidding Available - Visit our Website for Details!

EXCAVATORS

- 2011 VOLVO EC240 CL**
VCEC240CK0010931, 1031 Hrs
- 2007 JOHN DEERE 200C LC**
CX508654
- 2005 JOHN DEERE 120C**
35024
- 2001 KOBELCO SK200**
ACERA 27974
- 2006 VOLVO ECR88**
ECR88Y10885
- 2007 VOLVO EC55** 36508
- 2006 VOLVO EC55** 34109
- 2008 VOLVO EC35C** 1204020
- 2008 VOLVO EC35B**
VCEC35C0T00003881
- 2007 VOLVO EC35** 19611
- 2007 VOLVO EC25** 21679
- 2006 VOLVO EC210** V16236
- 2006 VOLVO EC210**
EC210V16683
- 2006 VOLVO EC210**
EC210V16684
- 2006 VOLVO EC210**
EC210V16685
- 2006 VOLVO EC20B**
VCEC20BVP07284141
- 2007 VOLVO EC20** 83813
- 2007 VOLVO EC20** 83823
- 2007 VOLVO EC140**
EC140V12228
- 2009 IHI 35-VX** WF003087
- 2005 IHI 35-N** WM002068
- 2009 IHI 28N-C** WM002395
- 2005 IHI 25NX** WD002102

DOZERS

- 2007 JOHN DEERE 700J** LGP
136272
- 2007 JOHN DEERE 650J**
T0650JX153465
- 2008 JOHN DEERE 450J LGP**
164938
- 2007 JOHN DEERE 450J**
T0450JX142515
- 2007 JOHN DEERE 450J**
T0450JX142524

LOADER BACKHOES

- 2005 VOLVO**
BL60 10489
4X4
- 2007 VOLVO**
BL60 10974
4X4
- 2007 VOLVO**
BL60 11103
4X4
- 2007 VOLVO**
BL60 11117
4X4
- 2008 VOLVO**
BL60 VCEBL60H00011318 4X4
- 2008 VOLVO BL60**
VCE0BL60T00011341 4X4
- 2007 KUBOTA L39** 52896 4X4
- 2005 KUBOTA B21TLB** 63605
4X4
- 2005 KUBOTA B21TLB** 73213
4X4
- 2007 DEERE JD310G**
T0310GX961929 4X4
- 2007 DEERE JD310G**
T0310GX962387 4X4
- 2007 DEERE JD310G**
T0310GX961905 4X4
- 2007 DEERE JD310G**

- T0310GX958906 4X4
- 2007 DEERE JD310G**
- T0310GX961907 4X4
- 2007 DEERE JD310G**

- 1999 CATERPILLAR 416C**
4ZN18131
- WHEEL LOADER**
- 2004 JOHN DEERE 544J**

SKID STEER LOADERS

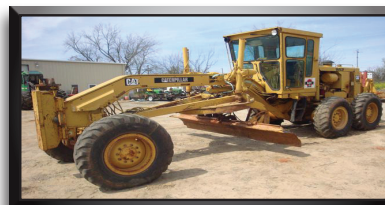
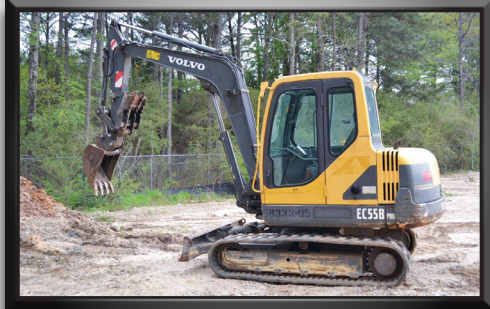
- 2008 VOLVO MC70**
VCEMC70B307015400
- 2008 VOLVO MC70**
VCEMC70B707015500
- 2006 CATERPILLAR 232B** 1791
- 2003 GEHL CTL60** 21302024
TRACK LOADER
- 2003 GEHL CTL60** 21302481
TRACK LOADER
- 2007 BOBCAT T250** 531811310
TRACK LOADER
- 2008 BOBCAT T190** 531619546
TRACK LOADER
- 2008 BOBCAT T190** 531620528
TRACK LOADER
- 2007 BOBCAT T190** 531616472
TRACK LOADER
- 2007 BOBCAT T190** 531616481
TRACK LOADER
- 2007 BOBCAT T190** 531616267
TRACK LOADER
- 2007 BOBCAT T190** 531616483
TRACK LOADER
- 2007 BOBCAT T190** 531616940
TRACK LOADER
- 2007 BOBCAT T190** 531617994
TRACK LOADER
- 2006 BOBCAT T190** 531613120
TRACK LOADER
- 2005 BOBCAT S250** 526017683
- 2008 BOBCAT S150** 529715593
- 2008 BOBCAT S150** 529715580

MOTOR GRADER

- CATERPILLAR 140G** 72V07576

COMPACTION EQUIPMENT

- 2007 INGERSOLL RAND**
SD70-D TF 194057 66 IN
- 2007 INGERSOLL RAND**
SD70-D TF 194059 66 IN
- 2007 INGERSOLL RAND SD**
70D SHELL KIT 66 IN
- 2007**
MULTIQUIP
AR13HAR
270205 36 IN
- 2004**
SUPERPAC
540 22040 54 IN
- 2002 SUPER**
PAC 540 SHELL
KIT 54 IN
- 2008 VOLVO**
SD100D 197436
84 IN
- 2008 VOLVO SHELL KIT** 84 IN
- 2008 WACKER RT85** 5808690
TRENCH COMPACTOR
- 2008 WACKER RT84** 5778193
TRENCH COMPACTOR
- 2007 WACKER RT83** 5732590
TRENCH COMPACTOR
- 2008 WACKER RT82-SC2**
5803779 TRENCH COMPACTOR
- 2007 WACKER RT82** 5700981
TRENCH COMPACTOR
- 2006 WACKER RT82** 5670680
TRENCH COMPACTOR



- T0310GX956409
- 2006 DEERE JD110** LV0110T511452
4X4



SWEEPERS

- 2004 BROYCE RJ350**
404319
- 2007 LAY-MOR 8HC**
31824
- 2004 TERRAMITE**
TSS38 TS0211
- TERRAMITE TSS38**
25TS0321
- TERRAMITE TSS38**
24TS0330

TELEHANDLERS

- 2005 TEREX TH1056C**
57082, 10000 LB 56 FT
- 2005 GENIE GTH844**
TH0805B-6653, 8000 LB 44 FT
- 2005 GENIE GTH844**
TH806B-6736, 8000 LB 44 FT
- 2007 GENIE GTH844**
11461, 8000 LB 44 FT
- 2007 GENIE GTH844**
11475, 8000 LB 44 FT
- 2007 GENIE GTH844**
11649, 8000 LB 44 FT
- 2007 GENIE GTH844**
GTH0808A-11825, 8000 LB 44 FT
- 2006 GENIE GTH844**
7430, 8000 LB 44 FT
- 2006 GENIE GTH644**
GTH0606B-6377, 6000 LB 44 FT
- 2006 GENIE GTH644**
GTH0606B-6378, 6000 LB 44 FT
- 2006 GENIE GTH644**
0606B-6381, 6000 LB 44 FT



- 2007 GENIE GTH644**
10407, 6000 LB 44 FT
- 2007 GENIE GTH644**
6535, 6000 LB 44 FT
- 2007 GENIE GTH644**
6529, 6000 LB 44 FT
- 2007 GENIE GTH644**
GTH0607A-11014, 6000 LB 44 FT
- 2007 GENIE GTH644**
GTH0607A-11277, 6000 LB 44 FT
- 2008 GENIE GTH644**
GTH0608A-12934, 6000 LB 44 FT



- 2007 GENIE GTH5519**
15453, 5000 LB 19 FT
- 2007 GENIE GTH5519**
15477, 5000 LB 19 FT
- 2007 GENIE GTH5519**
15498, 5000 LB 19 FT
- 2007 GENIE GTH5519**
15426, 5000 LB 19 FT
- 2007 GENIE GTH1056**
GTH1008A-11914, 10000 LB 56 FT
- 2007 GENIE 1056**
10810, 10000 LB 56 FT
- 2007 GENIE 1056**
11100, 10000 LB 56 FT
- 2003 GEHL RS5**
RS5JU1111135, 5000 LB 34 FT
- 2003 GEHL RS5**
RS5JU1011123, 5000 LB 34 FT



FORKLIFTS

- 2007 TOYOTA 8FGU25**
13963
- 2007 TOYOTA 8FGU25**
13173
- 2008 TOYOTA 8FDU25**
10531
- GEHL GLP30AFNUA**
B810N02647A
- 2002 DAEWOO GS35S**
B1-00-0380

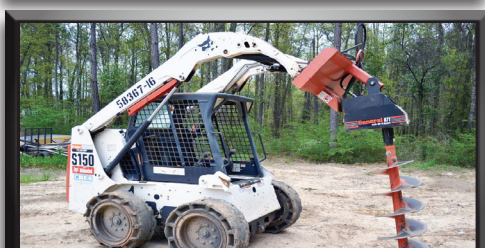
- 2002 DAEWOO G35S B1-00-0380**

MANLIFTS

- 2002 JLG 600AJ**
300068306
- 2002 JLG 450A** 300067049
- 2002 JLG 450A** 300066245
- 2000 JLG 450A** 300048477
- 2000 JLG 450A** 300047242
- 2008 GENIE Z80** Z8008-1988
- 2006 GENIE Z60** Z6006-5740
- 2006 GENIE Z60** Z6006-5741
- 2001 GENIE Z60** 3291
- 1999 GENIE Z60/34**
- 2008 GENIE Z45/25J**
Z45250628438
- 2002 GENIE Z45** Z4525-20760
- 2006 GENIE Z45** Z452506-28246
- 2001 GENIE Z45** Z4525-18932
- 2008 GENIE Z45**
Z452508A-36851
- 2008 GENIE Z45**
Z452508A-36855
- 1998 GENIE Z45** Z45-7290
- 1999 GENIE Z45** 11242
- 1999 GENIE Z34/22N**
1475
- 1998 GENIE Z34** 1748
- 2006 GENIE Z30N06**
Z30N06-8409
- 2007 GENIE TZ34/20 DC**
TZ3407-398
- 2005 GENIE TZ34/20 DC**
TZ3405-535
- 1999 GENIE S80** S80-1674
- 2000 GENIE S60** 6580
- REFURB
- 2006 GENIE S60** S6006-12362
- 2005 GENIE S60** S6005-12250
- 2005 GENIE S60** S6005-12251
- 1997 GENIE S60** 4675
- 2005 GENIE S60**
S600612294
- 2000 GENIE S60** 5802
- 1998 GENIE S40** 1650

SCISSOR LIFTS

- 2007 MEC 3247ES**
10001398
- 2003 JLG GS3246**
200095571
- 1999 GENIE GS4390**
40846
- 2007 GENIE GS3268RT**
GS6807-50365
- 2001 GENIE GS3268RT**
40228
- 1999 GENIE GS3268RT**
16389
- 2001 GENIE GS3246**
45152
- 2000 GENIE GS3246**
46818
- 1999 GENIE GS2646EE**
19472
- 1999 GENIE GS2646EE**
19348
- 2005 GENIE GS2632**
61692
- 2005 GENIE GS2632**
61691
- 2001 GENIE GS2032**
42208
- 2000 GENIE GS2032**
29600
- 1999 GENIE GS2032**
15221
- 1998 GENIE GS2032** 1122
- 2005 GENIE GS1930**
79948
- 2006 GENIE GS 2032 DC**



Rent Ready Low Hour Equipment



HendersonAuctions.com

Online Bidding Available - Visit our Website for Details!



GS3206-81116
2006 GENIE GS 2032 DC
 GS3206-81117
2006 GENIE GS 2032 DC
 GS3206-81119

2006 GENIE GS 2032 DC GS3206-81122
2007 GENIE 2632 86885
2007 GENIE 2632 86887
2007 GENIE 2632 86888
2007 GENIE 2632 86891
2007 GENIE 2632 87880
2007 GENIE 2632 87904
2007 GENIE 2632 87905
2007 GENIE 2632 87907
2007 GENIE 2032 45090
2007 GENIE 2032 39404
1999 GENIE 2032 19208
1999 GENIE 2032 19084
1999 GENIE 2032 19236
1999 GENIE 2032 19381
2007 GENIE 1930 54613
2007 GENIE 1930 50962
2007 GENIE 1930

GS3007B-87787
2007 GENIE 1930
 GS3007B-87754
2007 GENIE 1930
 GS3007B-87789
2007 GENIE 1930
 GS3007B-87759
2007 GENIE 1930
 GS3007B-87790
2007 GENIE 1930
 GS3007B-87763
2007 GENIE 1930
 GS3007B-87744
2007 GENIE 1930
 GS3007B-87752
2007 GENIE 1930
 GS3007A-87588
2007 GENIE 1930
 GS3007A-87591
2005 GENIE 1930 79869
2005 GENIE 1930 79945

TRACTOR
2011 NEW HOLLAND BOOMER
 40 2103011814 4X4, FRONT END
 LOADER, 323 HOURS

TRENCHERS
2004 VERMEER RT450
 1VRX0721041000366
2007 VERMEER RT200
 1VRX081F061001118
2007 VERMEER RT200
 1VRX081F061001040
2012 VERMEER RT200
 1VRX040K3C1001830
2005 VERMEER RT100
 1VRX051E541001229
2003 VERMEER RT100
 1VRX051E931000499
2007 VERMEER 450
 1VRX0721761001226
2005 VERMEER RTM 019
 109028 BORING TOOL PIERCE
 ARROW
2007 DITCH WITCH 1030
 CMW1030HA70001043
2005 DITCH WITCH 450 3Z0828
2010 EZ TRENCH EZ9100H6.5
 1000947
2004 EASY TRENCH
BE300H5.5 3000055

CRANE TRUCK
2000 FREIGHTLINER FL70
 1FV6HFBA3YHG52286 W/ MANITEX
 M1461 HYDRAULIC CRANE



2FWYKDYB5XAB04124
1999 STERLING LT9500
 2FWYEXYB5XAF55885
DUMP TRUCKS
2006 INTERNATIONAL 4200

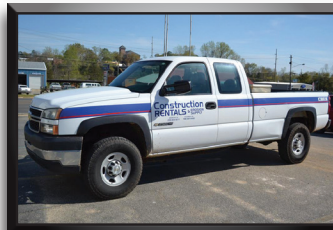
1HTMPAFM46H210756
 4/5 YARD DUMP BODY
2000 FREIGHTLINER FL60
 1FV6GFAC3YHG52004
 4/5 YARD DUMP BODY

ROLLBACK TRUCKS
2007 FREIGHTLINER M2106
 1FVHCYDC97DY04575
 ROLLBACK BODY
2003 INTERNATIONAL 4300
 1HTMMAAP73H576877
 LEDWELL ROLLBACK BODY

WATER TRUCKS
2001 FORD F750
 3FDPF75A51MA45260,
 2000 GALLON
2000 FREIGHTLINER FL70
 3FRXF75L64V685596,
 2000 GALLON
1998 FREIGHTLINER FL70
 1FV6HLAA7WH903465,
 2000 GALLON

PICKUP & SERVICE TRUCKS
2007 CHEV 3500
 1GBJC34D4E157865
2006 CHEV 3500
 1GBJC34D06E180011
2007 CHEV 2500
 1GCHC29U37E193236
2007 CHEV 2500

1GBHC24057E155261
2007 CHEV 2500
 1GBHC24057E129467
2007 CHEV 1500
 1GCCE19X76Z247085
2007 CHEV 1500
 1GCCE19V97E151692
2007 CHEV 1500
 1GCCE19X97Z108125
2010 DODGE 1500
 1D7RV1696AS231787
2005 FORD F550
 1FDAF56P65EC57965
2004 FORD F250
 1FTNF20F32ED64469
2002 FORD F250
 1FTNF20F72ED64474
1999 FORD F450
 1FTNF20FOXEC76535



TRAILERS
2003 LEDWELL TK70DGH-502
 1TKJ050282B108885
2004 LEDWELL TK70 HYDRA-TAIL
 119GA72AX2L033870
2003 LEDWELL TK70 HYDRA-TAIL
 119GA72A53L033907

TRACTOR TRUCKS
2004 MACK CX613 VISION
 4N019380 AC-427 ENGINE, 10 SP, AIR
 RIDE, WET KIT FOR LOWBOY
1999 STERLING LT9500

DUMP TRAILERS



2009 ANDERSON LHD6103T

4YNBN1028AC059876

2010 ANDERSON LHD6103T

C062590

UTILITY TRAILERS**2007 ANDERSON****LA7165TL**

4YNBN16249C056603

TRAILER DBL 6 X 16

10000 LB

2007 ANDERSON**LA7165TL**

4YNBN16229C056602

TRAILER DBL 6 X 16

10000 LB

2007 ANDERSON**LA7165TL**

4YNBN16209C056601

TRAILER DBL 6 X 16

10000 LB

2010 C&L 500

17XFJ082561063772

TRAILER WATER TANK

500 GAL

2003 MOBILE LG2200

1M9BF081031553344

TRAILER SGL 4 X 8 2200

LB GVW

2004 MOBILE**FM1610**

1M9BF162141553680

TRAILER DBL 6 X 16

10000 LB GV

2003 MOBILE BM127

1M9BF122721553302

TRAILER DBL 6 X 12

7000 LB GVW

2003 MOBILE

1M9BF142721553179

TRAILER DBL 6 X 14

10000 LB

2006 MOBILE

1M9BF081121553299

TRAILER SGL 4 X 8 2200

LB GVW

2003 MOBILE

1M9BF122921553297

TRAILER DBL 6 X 12

7000 LB GVW

2003 MOBILE

1M9BF142131553325

TRAILER DBL 6 X 14

7000 LB GVW

2003 MOBILE

1M9BF081421553300

TRAILER SGL 4 X 8 2200

LB GVW

2003 MOBILE

1M9BF081621553301

TRAILER SGL 4 X 8 2200

LB GVW

2003 MOBILE

1M9BF081X21553298

TRAILER SGL 4 X 8 2200

LB GVW

2002 MOBILE

1M9BF122721553296 TRAILER DBL

6 X 12 7000 LB GVW

AIR COMPRESSORS**2009 MI-T-M AMPH65-08M**

20094493

2005 SULLAIR 210 24995

200806240045

2008 SULLIVAN 185DPQ

200806240045

2002 SULLIVAN 210

1843222332

GENERATORS**2010****WACKER****GS9700V**

5888236

2008**WACKER****GS9.7V**

5808353

2008**WACKER****GS8.5V**

5815465

2009 WACKER GP9700

5860265

2006 MULTIQUIP GA6HA

5532003

2001 MULTIQUIP DCA45SS1

7202683

5D8LC141771000119

2007 ALLMAND NL6

2078PR007

2007 ALLMAND NL6

3248PR007

2007 ALLMAND NL6**TAMPERS****2010 WACKER BS60-S1**

5907687

2010 WACKER BS60-S1

5907686

2010 WACKER BS60-S1

5932835

2010 WACKER BS60-S1

5932825

2010 WACKER BS60-S1

5932833

2010 WACKER BS60-S1

5932832

2008 WACKER BS60-4

5762227

2008 WACKER BS60-4

5803442

2008 WACKER BS60-4

5803441

2010 WACKER BS60-4

5883580

2010 WACKER BS60-4

5883585

2008 MULTIQUIP MTX70

3728

CONCRETE EQUIPMENT**2006 MULTIQUIP****DSBSCREED 220 8-12FT**

SCREED

2008 MULTIQUIP**MC94SHB/HBC1 E2852187**

9CF MIXER

2010 DYNAPAC DK950

9508020935 9CF MIXER

2007 STONE 6CF

61210148 6 CF MIXER

2007 TEREX PB16ES 145

PLANER SCARIFIER

STUMP GRINDER**2003 VERMEER SC252**

1VRN071F961011129

TAMPERS**2010 WACKER BS60-S1**

5888328

2007 WACKER BS60-4

5702919

2008 MULTIQUIP MTR-

40F R2756

2004 WACKER BS52Y

5444289

2003 WACKER WP1550

5416651

2006 WACKER WP1550

6526585

2009 WACKER WP1551

6675745

2009 WACKER WP1552

6674189

2010 WACKER WP1553

6678544

2012 MULTIQUIP**MVC88VGHW W-7120****2012 MULTIQUIP****MVC88VGHW W-7120****STRAW BLOWER****2007 FINN B40 1557****CHIPPERS****2007 VERMEER BC600XL**

1VR2091H671001787

2007 VERMEER BC600XL

1VR2091H471001867

**DATE/TIME:****Wednesday - April 24th • 9AM****LOCATION:**Sumter Fair Grounds
903 Adderton St. - Americus, GA 31709**ACCOMMODATIONS:**Quality Inn 229.924.4431
Windsor Hotel 229.924.1555**NEARBY AIRPORTS:**

Southwest GA Regional, Albany GA - KABY

TERMS OF SALE:**Buyer's Premium:****10% on the 1st \$2,500, then 2% on the balance of each item.** All bids are final. All items are sold as is / where is, buyer is responsible for disassembly and removal of items. Full settlement is due on the day of sale. Cash, Wire Transfer, Cashier's Check/Money Order, Personal/ Business Check with bank letter of guarantee-accepted payments. Visa, Mastercard, Discover, American Express (3% Fee Applies to Credit Card Purchases)**INTERNET BIDDING:**

Live Auction w/online bidding

Available at:

www.hendersonauctions.com

LA Lic# 136-13

GA Lic# AUNR001989



Rent Ready Low Hour Equipment



HendersonAuctions.com

Online Bidding Available - Visit our Website for Details!



GEORGIA BUGGIES

- 2006 TEREX PB100 HGP-27658
- 2006 TEREX PB100 HYP-27890
- 2006 STONE SB1600 242007205
- 2006 STONE SB1600 52006013
- 2006 WHITMAN WBH-16 250938
- 2006 WHITMAN WBH-16 250974
- 2010 WACKER BFS914AB 1898836

CONCRETE TROWELS

- 2010 WACKER CT48 5890997 48 IN GAS
- 2009 WACKER CT36 5722689 36 IN GAS
- 2006 WACKER 9438 5667457 36 IN GAS
- 2012 MORRISON B446 109105 48 IN GAS

UTILITY VEHICLES

- 2008 KAWASAKI 310 JK1AFDB187B514414 4X4, DIESEL
- 2008 KAWASAKI 310 JK1AFDB137B512876 4X4, DIESEL
- 2008 KAWASAKI 310 JK1AFDD168B501174 4X4, DIESEL
- 2008 KAWASAKI 310 JK1AFDD108B501283 4X4, DIESEL
- 2008 KAWASAKI KAF950D8F JK1AFDD198B501220 4X4, DIESEL
- 2008 KAWASAKI KAF950D8F JK1AFDD198B500973 4X4, DIESEL
- 2008 KAWASAKI KAF950D8F JK1AFDD198B501430 4X4, DIESEL
- 2008 KAWASAKI KAF950D8F JK1AFDE128B501221 4X4, DIESEL

PLATE COMPACTORS

- 2010 WACKER WP1554 6691103
- 2010 WACKER WP1555 6691102

PRESSURE WASHERS

- 2003 MI-T-M JCW2504-4MHO 10061334
- 2008 MI-T-M JCW30030MHB 10390140
- 2005 MI-T-M CW-3004-4MGH 10187611
- 2005 MI-T-M CW-3004-4MGH 10187612
- 2011 HONDA HQ4-3500 0211-12197
- 2003 MI-T-M HSP-3504-3MGH 15009787

WELDING MACHINES

- 2008 LINCOLN RANGER CH235 U1080202977
- 2006 MILLER 302D LCO19808
- (2) 2007 LINCOLN VANTAGE 300

TENTS

- TENT 20 X 20
- (2) TENT 20 X 30
- TENT LIGHTS

BOUNCE INFLATABLES

- RIDE BOUNCE CLOWN FACE
- RIDE BOUNCE DALMATION 15 X 15
- RIDE BOUNCE JUPITER
- RIDE BOUNCE PRINCESS CASTLE
- RIDE BOUNCE SLIDE COMBO
- RIDE SLIP AND SLIDE
- SLIDE INFLATABLE 18' REG
- BOUNCE RIDE JURASIC PARK
- MISC. TOOLS & SUPPLIES

- AIR COMPRESSORS
- AIR HOSE
- APPLIANCE DOLLYS
- AUGER ATTACHMENTS
- BACK PACK BLOWERS
- BAND SAWS
- BOLT CUTTERS
- BORING TOOLS
- BOTTLE JACKS
- BOX BLADES
- BREAKER BITS
- BREAKER SPADES
- BRUSH CHIPPERS
- BUSH HOGS
- CARPET DRYER BLOWERS
- CARPET TOOLS
- CHAIN BINDERS
- CHAIN SAWS
- CHEMICAL SPRAYERS
- CHISELS
- CHOP SAWS
- CIRCULAR SAWS
- CONCRETE CHUTES
- CONCRETE FLOATS
- CONCRETE MIXERS
- CONCRETE SAWS
- CONCRETE SCREED
- CONCRETE TOOLS
- CONCRETE VIBRATORS
- LEAF BLOWERS
- LOG SPLITTERS
- MUD SPLINTERS
- NAIL GUNS
- PALLET JACKS
- PARKING LOT STRIPERS
- PARTY RENTAL EQUIPMENT
- PAVEMENT BREAKERS
- PLATE COMPACTORS
- PNEUMATIC CONCRETE BREAKERS
- PNEUMATIC STAPLERS
- POPCORN MACHINE
- PORTABLE LIGHTS
- PRESSURE WASHERS
- PROPANE TANKS
- RAKES
- REBAR CUTTERS
- ROOFING NAILERS
- ROOT RAKES
- SAFETY EQUIPMENT
- SANDBLASTING EQUIPMENT
- SANDERS
- SCAFFOLDING & SCAFFOLDING HARDWARE
- SEWER AUGERS
- SEWER SNAKES
- SHEET METAL BRAKE
- SHOP FANS
- SNO-CONE MACHINES



- CORE DRILLS
- CUT-OFF SAWS
- DEHUMIDIFIER
- DIAMOND CORE BITS
- DIGGING & LOADER BUCKETS
- DISC HARROWS
- DRILLS
- DRYWALL LIFTS
- ELECTRIC BREAKING HAMMERS
- ELECTRIC DRILL/DRIVERS
- ENGINE HOIST
- FERTILIZE DISTRIBUTORS
- FLOOR EDGERS
- FLOOR NAILERS
- FLOOR POLISHERS
- FLOOR SANDERS
- FOLDING CHAIRS
- FOLDING TABLES
- FORK ATTACHMENTS
- FRAME NAILERS
- GAS POWERED AUGERS
- GAS POWERED GENERATORS
- GRAPPLE ATTACHMENTS
- GRILLS
- GRINDERS
- HAMMER DRILLS
- HEATERS
- HYDRAULIC BREAKER
- ATTACHMENTS
- IMPACT WRENCHES
- JIG SAWS
- LADDERS
- LANDSCAPE RAKES
- LASER PIPE LEVELS
- LAWN MOWERS
- SOD CUTTERS
- SOD ROLLERS
- SUBMERSIBLE PUMPS
- SUCTION & DISCHARGE HOSE
- SURVEYING INSTRUMENTS
- TAMPERS
- TILE CUTTERS
- TILE ROLLERS
- TILE SAWS
- TILLERS
- TRAFFIC CONES
- TRASH PUMPS
- UNDERGROUND LINE DETECTOR
- UPRIGHT TAMPERS
- WALL PAPER TOOLS
- WALLPAPER STEAMERS
- WATER PUMPS 2,3&4 INCH
- WEED EATERS
- WELDING EQUIPMENT

All Inventory, Shop Equipment, Tools, Office Furniture & Consumables Will Be Sold!



Private Home of Carlus Gay

To be Sold at Private Sale
2106 South Lee St. Rd. Americus, GA 31709
For More Information Contact:
Ronnie Greer/Century 21 - 229.924.2903

4240 Sq. Ft.
6.06 Acres
4 Bdrm/3 Bath

Land to Be Sold At Auction:

1 Hunting / Recreation Tract

86.79 Acres of Land & Lake
Hwy 49S in Sumter County, GA



Great Recreational, hunting and fishing tract located south of Americus on Highway 49. This 86.79 acre tract has 12 acre lake stocked with fish.

Directions: From Americus, Georgia, take US 19 south to 280 west and go 1 mile, turn left onto State Route 49 South and go 1+/- mile, land on right before Rehobeth Church.

2 Auctioning LOT's 6 • 7 • 8 • 9

All Water Front Lots - Lake Philema
Corner of Mask Rd & Hook Mills Rd. - Sumter County, GA



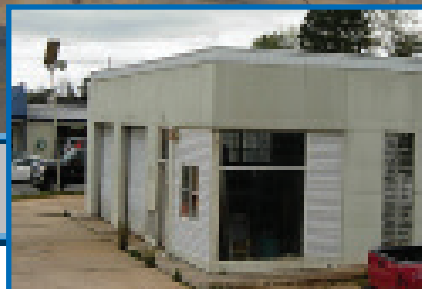
(4) Lots- Lot 6 (8.73 Acres), Lot 7 (7.89 Acres), Lot 8 (6.47 Acres), Lot 9 (4.83 Acres) all have 250 Rd Frontage w/Lake Philema water frontage. Pasture Land & Crop Land, Paved & Dirt Road Frontage, Huge 239 Acre Private Lake (Largest in County), Two Miles from City Limits.

Grant Auction Co. LLC- GA # 1603

Rental Store & Lot to Be Sold At Auction:

CRES STORE & LOT

909 MLK Jr. Blvd Americus, GA 31709 - 238 FT Rd. Frontage-Hwy 19
Main Building - 5211 Sq. Ft. - 2300 Sq. Ft. Canopy - Secondary Building - 1172 Sq. Ft.



Buyer's Premium: 10% on the 1st \$2,500, then 2% on the balance of each item.



(225)686-2252

HendersonAuctions.com

P.O. Box 336 Livingston, LA 70754

Upcoming Auctions:

1) Bankruptcy Estate of Lumar Marine Inc.

Liquidation (Case 13-100013)

April 19th @ 10am

Location: Harvey, LA

Live Onsite Auction Only-No Online Bidding

2) Contifab Fabrication Shop Liquidation

April 20th @ 10am

Location: New Orleans, LA

Live Onsite Auction Only-No Online Bidding

3) Marine Auction - Mid-June

Location: Morgan City, LA

4) Liquidation of Surplus Equipment

Diamond B Construction - May 22nd

Location: Alexandria, LA

Auctioneer: M. Henderson

LA Lic# 136-16

GA Lic# AUNR001989



Complete Liquidation

AUCTION

April 24th - 9am
Americus, GA



500+ Pieces of Rental Equipment



HendersonAuctions.com

Sumter County Fairgrounds - 903 Adderton St. Americus, GA - 1.800.850.2252